

BWASP – Flight 22 – September 10 2008

Area flown: Blocks 4 and 6, completed all transects; Block 5, westernmost transect completed.

Total hours flown: 7.0

Total transect hours: 3.7

Number of bowheads seen: 19 (2 calves)

Weather and visibility: Ceilings ranged from 1000' to 1500'. Visibility was very good and the Beaufort state ranged from 2-5. Higher Beaufort states to the east limited further effort in Block 5. Broken floe ice was present in the northeast corner of Block 6.

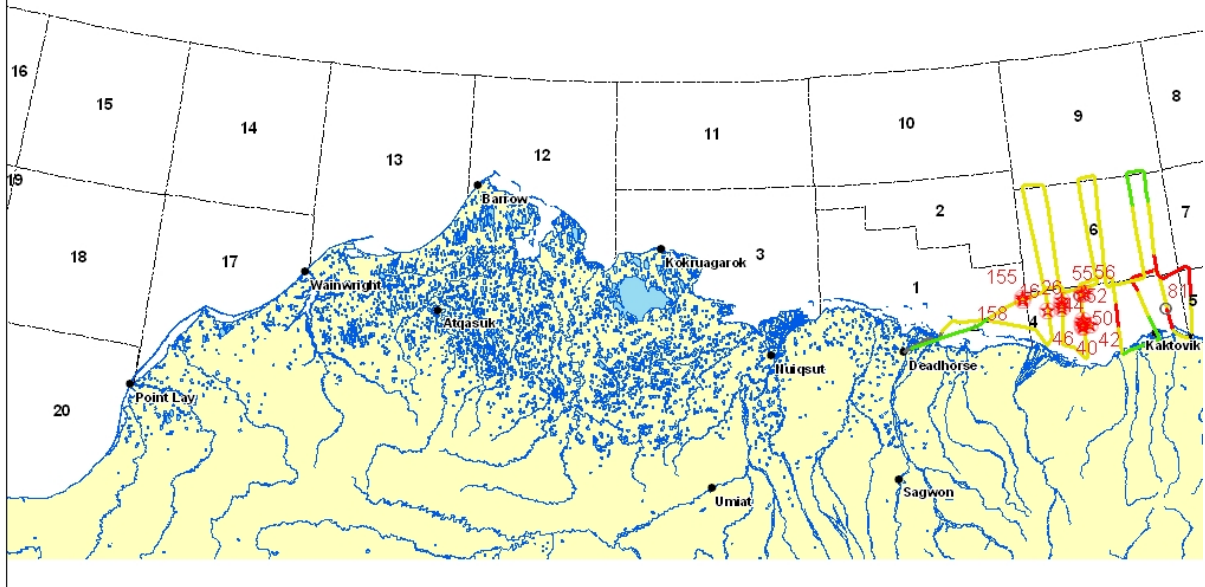
Sightings: Bowheads, unidentified cetaceans, one polar bear on barrier island, and probable ringed seals. The unidentified cetaceans were probable bowheads but could not confirm. The two cow/calf pairs were closely associated, within 1-2 body lengths.

Bowhead Preliminary Summary, Flight 22 Date: 9/10/2008

Total bowheads: 19	Start time: 9/10/2008 10:11:32 AM	End time: 9/10/2008 5:05:17 PM
Bowhead sightings: 13	Transect minutes: 224	Transect km: 769
Bowheads on transect: 10	Connect minutes: 58	Connect km: 195.1
Bowhead calves: 2	Trans+Con minutes: 282	Trans+Con km: 964.1
Bowhead calves on transect: 0	Search minutes: 108	Search km: 250.7
Bowhead repeats: 0	Total minutes: 414	Total km: 1303
Possible repeats: 2	Deadhead minutes: 24	Deadhead km: 88.2
Total gray whales: 0	Search blocks: 1, 4, 6, 7, 9	
Total belugas: 0	Transect blocks: 4, 6, 0, 5, 9	
Other whale sightings: 3		
Total walrus: 0		
Total bear: 1		

Event	Lat	Long	Block	Species	Total	Repeat	Calves	Swim direction	Swim Speed	Behavior	On effort
16	70.36	- 145.61	4	bowhead	1	no	0	59	slow	swim	True
21	70.42	- 145.31	4	bowhead	4	no	0	275	slow	swim	True
25	70.38	- 145.32	4	bowhead	1	no	0	305	slow	swim	True
26	70.37	- 145.33	4	bowhead	1	no	0	12	slow	swim	True
40	70.22	- 144.96	4	bowhead	1	no	0	-1	.	swim	True
42	70.23	- 144.82	4	bowhead	1	no	0	-1	slow	swim	False
44	70.23	- 144.96	4	bowhead	1	no	0	-1	slow	swim	True
46	70.25	- 144.98	4	bowhead	1	no	0	-1	slow	swim	False
50	70.27	- 144.96	4	bowhead	1	no	0	272	slow	swim	True
52	70.44	- 144.96	4	unknown cetacean	2	no	0	-1	.	.	True
55	70.44	- 144.91	4	bowhead	1	unknown	0	-1	slow	swim	False
56	70.45	- 144.84	4	bowhead	1	unknown	0	-1	slow	swim	False
81	70.27	- 143.34	4	unknown cetacean	1	no	0	326	slow	swim	True
154	70.45	- 146.06	1	bowhead	4	no	2	-1	slow	cow with calf	False
155	70.46	- 146.06	1	bowhead	1	no	0	-1	slow	swim	False

Minerals Management Service
Bowhead Whale Aerial Survey Program
Flight 22, 9/10/2008



Meteorological/Oceanographic Summary, Flight 22 Date: 9/10/2008

Event	Lat	Long	Time	Type	% Ice	SeaState	Sky	Vis impeded left	Vis impeded right
1	70.2	-148.44	10:11:32 AM	.	-1	.	overcast	<1 km	<1 km
2	70.26	-147.97	10:17:03 AM	.	-1	.	overcast	0 km	0 km
3	70.25	-147.77	10:18:55 AM	no ice	0	B3 scattered caps, 7-10 kt	overcast	<1 km	<1 km
5	70.31	-147.67	10:20:43 AM	no ice	0	B3 scattered caps, 7-10 kt	overcast	2-3 km	<1 km
6	70.36	-147.48	10:23:28 AM	no ice	0	B3 scattered caps, 7-10 kt	overcast	<1 km	<1 km
7	70.35	-147.28	10:25:20 AM	no ice	0	n/a	overcast	0 km	0 km
8	70.35	-146.84	10:29:45 AM	no ice	0	B4 numerous caps, 11-16 kt	overcast	5-10 km	5-10 km
9	70.34	-146.76	10:30:43 AM	no ice	0	B4 numerous caps, 11-16 kt	overcast	5-10 km	1-2 km
10	70.33	-146.62	10:32:09 AM	no ice	0	B4 numerous caps, 11-16 kt	overcast	5-10 km	3-5 km
11	70.28	-146.11	10:37:19 AM	no ice	0	B4 numerous caps, 11-16 kt	overcast	5-10 km	5-10 km
12	70.26	-145.9	10:39:32 AM	no ice	0	B4 numerous caps, 11-16 kt	overcast	5-10 km	5-10 km

13	70.14	-145.7	10:43:14 AM	no ice	0	B4 numerous caps, 11-16 kt	overcast	5-10 km	5-10 km
14	70.19	-145.6	10:45:52 AM	no ice	0	B4 numerous caps, 11-16 kt	overcast	5-10 km	5-10 km
15	70.24	-145.6	10:47:20 AM	no ice	0	B4 numerous caps, 11-16 kt	overcast	5-10 km	5-10 km
16	70.36	-145.61	10:51:07 AM	no ice	0	B3 scattered caps, 7-10 kt	overcast	5-10 km	5-10 km
17	70.5	-145.61	10:55:47 AM	no ice	0	B3 scattered caps, 7-10 kt	overcast	5-10 km	5-10 km
18	70.51	-145.59	10:56:11 AM	no ice	0	B3 scattered caps, 7-10 kt	overcast	5-10 km	5-10 km
19	70.51	-145.28	10:59:56 AM	no ice	0	B3 scattered caps, 7-10 kt	overcast	5-10 km	5-10 km
20	70.5	-145.27	11:00:26 AM	no ice	0	B4 numerous caps, 11-16 kt	overcast	5-10 km	5-10 km
21	70.42	-145.31	11:03:06 AM	no ice	0	B4 numerous caps, 11-16 kt	overcast	5-10 km	5-10 km
22	70.41	-145.31	11:03:35 AM	no ice	0	B4 numerous caps, 11-16 kt	overcast	5-10 km	5-10 km
24	70.41	-145.32	11:08:12 AM	no ice	0	B4 numerous caps, 11-16 kt	overcast	5-10 km	5-10 km
25	70.38	-145.32	11:09:07 AM	no ice	0	B4 numerous caps, 11-16 kt	overcast	5-10 km	5-10 km
26	70.37	-145.33	11:09:44 AM	no ice	0	B3 scattered caps, 7-10 kt	overcast	5-10 km	5-10 km
27	70.32	-145.35	11:11:24 AM	no ice	0	B3 scattered caps, 7-10 kt	overcast	5-10 km	5-10 km
28	70.27	-145.37	11:12:51 AM	no ice	0	B4 numerous caps, 11-16 kt	overcast	5-10 km	3-5 km
29	70.16	-145.41	11:16:17 AM	no ice	0	B4 numerous caps, 11-16 kt	overcast	5-10 km	5-10 km
30	70.14	-145.42	11:17:01 AM	no ice	0	B4 numerous caps, 11-16 kt	overcast	5-10 km	5-10 km
31	70.13	-145.37	11:18:00 AM	no ice	0	B4 numerous caps, 11-16 kt	overcast	5-10 km	5-10 km
32	70.11	-145.19	11:20:22 AM	no ice	0	B3 scattered caps, 7-10 kt	overcast	5-10 km	5-10 km
34	70.03	-145.01	11:24:02 AM	no ice	0	B3 scattered caps, 7-10 kt	overcast	5-10 km	5-10 km
35	70.03	-145	11:24:12 AM	no ice	0	B3 scattered caps, 7-10 kt	overcast	5-10 km	5-10 km
37	70.03	-144.97	11:24:42 AM	no ice	0	B3 scattered caps, 7-10 kt	overcast	5-10 km	5-10 km
39	70.19	-144.96	11:29:50 AM	no ice	0	B4 numerous caps, 11-16 kt	overcast	5-10 km	5-10 km
40	70.22	-144.96	11:30:59 AM	no ice	0	B4 numerous caps, 11-16 kt	overcast	5-10 km	5-10 km
41	70.23	-144.96	11:31:16 AM	no ice	0	B4 numerous caps, 11-16 kt	overcast	5-10 km	5-10 km
42	70.23	-144.82	11:34:03 AM	no ice	0	B4 numerous caps, 11-16 kt	overcast	5-10 km	5-10 km
43	70.23	-144.95	11:37:04 AM	no ice	0	B4 numerous caps, 11-16 kt	overcast	5-10 km	5-10 km
44	70.23	-144.96	11:37:11 AM	no ice	0	B4 numerous caps, 11-16 kt	overcast	5-10 km	5-10 km
45	70.24	-144.97	11:37:28 AM	no ice	0	B4 numerous caps, 11-16 kt	overcast	5-10 km	5-10 km
46	70.25	-144.98	11:37:46 AM	no ice	0	B4 numerous caps, 11-16 kt	overcast	5-10 km	5-10 km
48	70.24	-144.97	11:39:27 AM	no ice	0	B4 numerous caps, 11-16 kt	overcast	5-10 km	5-10 km
50	70.27	-144.96	11:40:38 AM	no ice	0	B4 numerous caps, 11-16 kt	overcast	5-10 km	5-10 km
51	70.36	-144.96	11:43:28 AM	no ice	0	B4 numerous caps, 11-16 kt	overcast	5-10 km	5-10 km
52	70.44	-144.96	11:45:56 AM	no ice	0	B4 numerous caps, 11-16 kt	overcast	5-10 km	5-10 km

53	70.44	- 144.96	11:46:06 AM	no ice	0	B4 numerous caps, 11-16 kt	overcast	5-10 km	5-10 km
54	70.43	- 144.85	11:51:10 AM	no ice	0	B4 numerous caps, 11-16 kt	overcast	5-10 km	5-10 km
55	70.44	- 144.91	11:55:14 AM	no ice	0	B4 numerous caps, 11-16 kt	overcast	5-10 km	5-10 km
56	70.45	- 144.84	11:58:05 AM	no ice	0	B4 numerous caps, 11-16 kt	overcast	5-10 km	5-10 km
57	70.43	- 144.95	12:00:48 PM	no ice	0	B4 numerous caps, 11-16 kt	overcast	5-10 km	5-10 km
58	70.5	- 144.96	12:02:59 PM	no ice	0	B4 numerous caps, 11-16 kt	overcast	5-10 km	5-10 km
59	70.51	- 144.94	12:03:29 PM	no ice	0	B4 numerous caps, 11-16 kt	overcast	5-10 km	5-10 km
60	70.54	- 144.46	12:09:16 PM	no ice	0	B4 numerous caps, 11-16 kt	overcast	5-10 km	5-10 km
62	70.52	-144.3	12:11:25 PM	no ice	0	B4 numerous caps, 11-16 kt	overcast	5-10 km	5-10 km
63	70.5	-144.3	12:11:57 PM	no ice	0	B5 many caps, 17- 21 kt	overcast	5-10 km	5-10 km
64	70.35	-144.3	12:17:01 PM	no ice	0	B4 numerous caps, 11-16 kt	overcast	5-10 km	5-10 km
65	70.19	- 144.31	12:22:08 PM	no ice	0	B4 numerous caps, 11-16 kt	overcast	5-10 km	5-10 km
66	70.15	- 144.31	12:23:26 PM	no ice	0	B3 scattered caps, 7-10 kt	overcast	5-10 km	5-10 km
67	70.03	- 144.32	12:27:20 PM	no ice	0	B2 sm waves, 4-6 kt	overcast	5-10 km	5-10 km
68	70.02	- 144.29	12:28:01 PM	no ice	0	B2 sm waves, 4-6 kt	partly cloudy	5-10 km	5-10 km
69	70.04	- 144.13	12:30:08 PM	no ice	0	B2 sm waves, 4-6 kt	partly cloudy	5-10 km	5-10 km
70	70.04	- 144.11	12:30:22 PM	no ice	0	B2 sm waves, 4-6 kt	partly cloudy	5-10 km	5-10 km
71	70.08	- 143.69	12:35:35 PM	no ice	0	B2 sm waves, 4-6 kt	partly cloudy	5-10 km	5-10 km
72	70.09	- 143.57	12:37:22 PM	no ice	0	B3 scattered caps, 7-10 kt	partly cloudy	5-10 km	5-10 km
73	70.25	- 143.73	12:42:38 PM	no ice	0	B5 many caps, 17- 21 kt	partly cloudy	5-10 km	5-10 km
74	70.42	- 143.86	12:48:13 PM	no ice	0	B5 many caps, 17- 21 kt	partly cloudy	5-10 km	5-10 km
75	70.5	- 143.92	12:50:40 PM	no ice	0	B5 many caps, 17- 21 kt	partly cloudy	5-10 km	5-10 km
76	70.51	- 143.91	12:51:09 PM	no ice	0	B4 numerous caps, 11-16 kt	partly cloudy	5-10 km	5-10 km
77	70.53	- 143.45	12:56:44 PM	no ice	0	B4 numerous caps, 11-16 kt	partly cloudy	5-10 km	5-10 km
78	70.5	-143.4	12:57:51 PM	no ice	0	B4 numerous caps, 11-16 kt	partly cloudy	5-10 km	5-10 km
79	70.34	- 143.35	1:02:58 PM	no ice	0	B4 numerous caps, 11-16 kt	overcast	5-10 km	5-10 km
80	70.32	- 143.35	1:03:44 PM	no ice	0	B5 many caps, 17- 21 kt	overcast	5-10 km	5-10 km
81	70.27	- 143.34	1:05:29 PM	no ice	0	B5 many caps, 17- 21 kt	overcast	5-10 km	5-10 km
82	70.26	- 143.34	1:05:34 PM	no ice	0	B5 many caps, 17- 21 kt	overcast	5-10 km	5-10 km
83	70.27	- 143.35	1:10:10 PM	no ice	0	B5 many caps, 17- 21 kt	overcast	5-10 km	5-10 km
84	70.16	- 143.31	1:13:46 PM	no ice	0	B4 numerous caps, 11-16 kt	overcast	5-10 km	5-10 km
85	70.13	- 143.31	1:14:48 PM	no ice	0	B4 numerous caps, 11-16 kt	overcast	5-10 km	5-10 km
86	70.1	- 143.23	1:16:09 PM	no ice	0	B3 scattered caps, 7-10 kt	overcast	5-10 km	5-10 km
87	70.07	- 143.09	1:18:10 PM	no ice	0	n/a	overcast	5-10 km	5-10 km

88	70.06	- 142.98	1:19:53 PM	no ice	0	B3 scattered caps, 7-10 kt	overcast	5-10 km	5-10 km
89	70.09	- 142.96	1:20:57 PM	no ice	0	B4 numerous caps, 11-16 kt	partly cloudy	5-10 km	5-10 km
90	70.17	- 142.92	1:23:37 PM	no ice	0	B5 many caps, 17- 21 kt	partly cloudy	5-10 km	5-10 km
91	70.32	- 142.86	1:28:46 PM	no ice	0	B5 many caps, 17- 21 kt	partly cloudy	5-10 km	5-10 km
92	70.48	-142.8	1:34:00 PM	no ice	0	B5 many caps, 17- 21 kt	partly cloudy	5-10 km	5-10 km
93	70.5	- 142.79	1:34:45 PM	no ice	0	B5 many caps, 17- 21 kt	partly cloudy	5-10 km	5-10 km
94	70.51	- 142.78	1:34:55 PM	no ice	0	B5 many caps, 17- 21 kt	partly cloudy	5-10 km	5-10 km
95	70.52	- 142.88	1:36:26 PM	no ice	0	B5 many caps, 17- 21 kt	partly cloudy	5-10 km	5-10 km
96	70.47	- 143.32	1:41:37 PM	no ice	0	B5 many caps, 17- 21 kt	partly cloudy	5-10 km	5-10 km
97	70.5	- 143.42	1:43:17 PM	no ice	0	B5 many caps, 17- 21 kt	partly cloudy	5-10 km	5-10 km
98	70.5	- 143.42	1:43:23 PM	no ice	0	B4 numerous caps, 11-16 kt	overcast	5-10 km	5-10 km
99	70.64	- 143.42	1:47:54 PM	no ice	0	B4 numerous caps, 11-16 kt	overcast	5-10 km	5-10 km
100	70.77	-143.4	1:52:05 PM	broken floe	1	B4 numerous caps, 11-16 kt	overcast	5-10 km	5-10 km
101	70.8	-143.4	1:53:18 PM	broken floe	10	B2 sm waves, 4-6 kt	overcast	5-10 km	5-10 km
102	70.98	- 143.38	1:58:39 PM	broken floe	10	B2 sm waves, 4-6 kt	overcast	5-10 km	5-10 km
103	71.06	- 143.38	2:01:18 PM	new + broken floe	30	B1 ripples, 1-3 kt	partly cloudy	5-10 km	5-10 km
104	71.17	- 143.36	2:04:43 PM	new + broken floe	30	B1 ripples, 1-3 kt	partly cloudy	5-10 km	5-10 km
105	71.18	- 143.39	2:05:16 PM	broken floe	2	B2 sm waves, 4-6 kt	partly cloudy	5-10 km	5-10 km
106	71.19	- 143.68	2:08:17 PM	broken floe	2	B2 sm waves, 4-6 kt	partly cloudy	5-10 km	5-10 km
107	71.17	- 143.71	2:09:01 PM	broken floe	10	B2 sm waves, 4-6 kt	partly cloudy	5-10 km	5-10 km
108	71.14	- 143.71	2:10:23 PM	broken floe	10	B2 sm waves, 4-6 kt	overcast	5-10 km	5-10 km
109	71.1	-143.7	2:11:41 PM	broken floe	10	B3 scattered caps, 7-10 kt	overcast	5-10 km	5-10 km
110	70.95	-143.7	2:16:28 PM	broken floe	2	B3 scattered caps, 7-10 kt	overcast	5-10 km	5-10 km
111	70.85	-143.7	2:20:09 PM	broken floe	2	B3 scattered caps, 7-10 kt	overcast	5-10 km	5-10 km
112	70.79	- 143.69	2:21:51 PM	no ice	0	B4 numerous caps, 11-16 kt	overcast	5-10 km	5-10 km
113	70.64	- 143.69	2:27:12 PM	no ice	0	B4 numerous caps, 11-16 kt	overcast	5-10 km	5-10 km
114	70.5	- 143.68	2:31:47 PM	no ice	0	B4 numerous caps, 11-16 kt	overcast	5-10 km	5-10 km
115	70.49	- 143.72	2:32:19 PM	no ice	0	B4 numerous caps, 11-16 kt	overcast	5-10 km	5-10 km
116	70.48	- 144.11	2:36:00 PM	no ice	0	B4 numerous caps, 11-16 kt	overcast	5-10 km	5-10 km
117	70.47	- 144.41	2:39:10 PM	no ice	0	B4 numerous caps, 11-16 kt	overcast	5-10 km	5-10 km
118	70.5	- 144.43	2:40:16 PM	no ice	0	B4 numerous caps, 11-16 kt	overcast	5-10 km	5-10 km
119	70.66	- 144.42	2:45:25 PM	no ice	0	B3 scattered caps, 7-10 kt	overcast	5-10 km	5-10 km
120	70.77	-144.4	2:49:05 PM	no ice	0	B3 scattered caps, 7-10 kt	overcast	5-10 km	5-10 km
121	70.93	- 144.39	2:54:09 PM	no ice	0	B3 scattered caps, 7-10 kt	overcast	5-10 km	5-10 km

122	71.1	- 144.37	2:59:17 PM	no ice	0	B3 scattered caps, 7-10 kt	overcast	5-10 km	5-10 km
123	71.18	- 144.37	3:01:51 PM	no ice	0	B3 scattered caps, 7-10 kt	overcast	5-10 km	5-10 km
124	71.19	- 144.38	3:02:21 PM	no ice	0	B3 scattered caps, 7-10 kt	overcast	5-10 km	5-10 km
125	71.19	-144.7	3:06:01 PM	no ice	0	B3 scattered caps, 7-10 kt	overcast	5-10 km	5-10 km
126	71.17	- 144.71	3:06:36 PM	no ice	0	B3 scattered caps, 7-10 kt	overcast	5-10 km	5-10 km
127	71.02	- 144.68	3:11:49 PM	no ice	0	B3 scattered caps, 7-10 kt	overcast	5-10 km	5-10 km
128	70.86	- 144.66	3:17:17 PM	no ice	0	B3 scattered caps, 7-10 kt	overcast	5-10 km	5-10 km
129	70.81	- 144.65	3:19:01 PM	no ice	0	B4 numerous caps, 11-16 kt	overcast	5-10 km	5-10 km
130	70.66	- 144.63	3:24:06 PM	no ice	0	B4 numerous caps, 11-16 kt	overcast	5-10 km	5-10 km
131	70.5	-144.6	3:29:05 PM	no ice	0	B4 numerous caps, 11-16 kt	overcast	5-10 km	5-10 km
132	70.49	- 144.71	3:30:20 PM	no ice	0	B4 numerous caps, 11-16 kt	overcast	5-10 km	5-10 km
133	70.47	- 145.27	3:35:37 PM	no ice	0	B4 numerous caps, 11-16 kt	overcast	5-10 km	5-10 km
134	70.5	- 145.34	3:36:47 PM	no ice	0	B4 numerous caps, 11-16 kt	overcast	5-10 km	5-10 km
135	70.56	- 145.34	3:38:56 PM	no ice	0	B3 scattered caps, 7-10 kt	overcast	5-10 km	5-10 km
136	70.72	- 145.35	3:44:01 PM	no ice	0	B3 scattered caps, 7-10 kt	overcast	5-10 km	5-10 km
137	70.96	- 145.36	3:51:44 PM	no ice	0	B3 scattered caps, 7-10 kt	overcast	5-10 km	5-10 km
138	71.05	- 145.37	3:54:50 PM	no ice	0	B3 scattered caps, 7-10 kt	overcast	5-10 km	5-10 km
139	71.17	- 145.38	3:58:44 PM	no ice	0	B3 scattered caps, 7-10 kt	overcast	5-10 km	5-10 km
140	71.18	- 145.41	3:59:22 PM	no ice	0	B3 scattered caps, 7-10 kt	overcast	5-10 km	5-10 km
141	71.19	- 145.79	4:03:31 PM	no ice	0	B3 scattered caps, 7-10 kt	overcast	5-10 km	5-10 km
142	71.17	- 145.82	4:04:33 PM	no ice	0	B3 scattered caps, 7-10 kt	overcast	5-10 km	5-10 km
143	71.01	- 145.78	4:09:40 PM	no ice	0	B3 scattered caps, 7-10 kt	overcast	5-10 km	5-10 km
144	70.82	- 145.72	4:16:02 PM	no ice	0	B3 scattered caps, 7-10 kt	overcast	5-10 km	5-10 km
145	70.66	- 145.68	4:21:20 PM	no ice	0	B3 scattered caps, 7-10 kt	overcast	5-10 km	5-10 km
146	70.6	- 145.66	4:23:27 PM	no ice	0	B4 numerous caps, 11-16 kt	overcast	5-10 km	5-10 km
148	70.51	- 145.64	4:26:22 PM	no ice	0	B4 numerous caps, 11-16 kt	overcast	5-10 km	5-10 km
149	70.51	- 145.64	4:31:40 PM	no ice	0	B4 numerous caps, 11-16 kt	overcast	5-10 km	5-10 km
150	70.5	- 145.64	4:32:07 PM	no ice	0	B4 numerous caps, 11-16 kt	overcast	5-10 km	5-10 km
151	70.49	- 145.64	4:32:19 PM	no ice	0	B4 numerous caps, 11-16 kt	overcast	5-10 km	5-10 km
152	70.48	- 145.69	4:32:55 PM	no ice	0	B4 numerous caps, 11-16 kt	overcast	5-10 km	5-10 km
153	70.47	- 145.86	4:34:22 PM	no ice	0	B3 scattered caps, 7-10 kt	overcast	5-10 km	5-10 km
154	70.45	- 146.06	4:36:02 PM	no ice	0	B3 scattered caps, 7-10 kt	overcast	5-10 km	5-10 km
155	70.46	- 146.06	4:41:16 PM	no ice	0	B3 scattered caps, 7-10 kt	overcast	5-10 km	5-10 km
156	70.42	- 146.37	4:46:59 PM	no ice	0	B2 sm waves, 4-6 kt	overcast	<1 km	<1 km

157	70.36	- 146.76	4:50:37 PM	no ice	0	B2 sm waves, 4-6 kt	overcast	<1 km	<1 km
158	70.32	- 147.01	4:53:15 PM	no ice	0	B1 ripples, 1-3 kt	overcast	5-10 km	5-10 km
159	70.29	- 147.31	4:56:00 PM	no ice	0	B1 ripples, 1-3 kt	overcast	5-10 km	5-10 km
160	70.26	-147.7	4:59:22 PM	no ice	0	B1 ripples, 1-3 kt	overcast	5-10 km	5-10 km
161	70.25	- 147.79	5:00:14 PM	no ice	0	n/a	overcast	5-10 km	5-10 km
162	70.21	- 148.29	5:05:17 PM	no ice	0	n/a	overcast	5-10 km	5-10 km