

Table IV-1
FEMALE BREAST CANCER (Invasive)

TRENDS IN SEER INCIDENCE^a AND U.S. MORTALITY^b USING THE JOINPOINT REGRESSION PROGRAM, 1975-2004
WITH UP TO THREE JOINPOINTS BY RACE AND AGE

		Joinpoint Segment 1		Joinpoint Segment 2		Joinpoint Segment 3		Joinpoint Segment 4	
		Year	APC	Year	APC	Year	APC	Year	APC
<u>SEER Cancer Incidence^a</u>									
All Races	All Ages	1975-1980	-0.4	1980-1987	3.7*	1987-2001	0.4*	2001-2004	-3.9*
All Races	Under 50	1975-1980	-1.4	1980-1986	2.9*	1986-2004	-0.3*		
All Races	50 and Over	1975-1982	0.8	1982-1986	5.8*	1986-2001	0.7*	2001-2004	-5.1*
White	All Ages	1975-1980	-0.3	1980-1987	3.7*	1987-2001	0.5*	2001-2004	-4.1*
White	Under 50	1975-1980	-1.2	1980-1986	2.8*	1986-2004	-0.3*		
White	50 and Over	1975-1980	0.0	1980-1987	4.2*	1987-2001	0.7*	2001-2004	-5.3*
Black	All Ages	1975-1992	2.3*	1992-2004	-0.3				
Black	Under 50	1975-1991	1.5*	1991-2004	-1.0*				
Black	50 and Over	1975-1994	2.4*	1994-2004	-0.4				
<u>SEER Delay-Adjusted Incidence^a</u>									
All Races	All Ages	1975-1980	-0.4	1980-1987	3.7*	1987-2001	0.5*	2001-2004	-3.5*
All Races	Under 50	1975-1980	-1.4	1980-1986	2.9*	1986-2004	-0.2		
All Races	50 and Over	1975-1982	0.8	1982-1986	5.8*	1986-2001	0.8*	2001-2004	-4.8*
White	All Ages	1975-1980	-0.3	1980-1987	3.7*	1987-2001	0.6*	2001-2004	-3.7*
White	Under 50	1975-1980	-1.2	1980-1986	2.8*	1986-2004	-0.2		
White	50 and Over	1975-1980	0.0	1980-1987	4.2*	1987-2001	0.8*	2001-2004	-4.8*
Black	All Ages	1975-1992	2.3*	1992-2004	-0.1				
Black	Under 50	1975-1992	1.5*	1992-2002	-1.5*	2002-2004	5.6		
Black	50 and Over	1975-1993	2.6*	1993-2004	0.1				
<u>U.S. Cancer Mortality^b</u>									
All Races	All Ages	1975-1990	0.4*	1990-2004	-2.2*				
All Races	Under 50	1975-1990	-0.4*	1990-2004	-3.3*				
All Races	50 and Over	1975-1990	0.6*	1990-2004	-2.0*				
White	All Ages	1975-1990	0.3*	1990-2004	-2.4*				
White	Under 50	1975-1990	-0.6*	1990-2004	-3.7*				
White	50 and Over	1975-1990	0.5*	1990-2004	-2.1*				
Black	All Ages	1975-1992	1.5*	1992-2004	-1.3*				
Black	Under 50	1975-1988	1.8*	1988-2004	-1.9*				
Black	50 and Over	1975-1993	1.6*	1993-2004	-1.2*				

Joinpoint Regression Program Version 3.0, April 2005, National Cancer Institute. (<http://srab.cancer.gov/joinpoint/>).

The APC is the Annual Percent Change based on rates age-adjusted to the 2000 US Std Population (19 age groups - Census P25-1130).

^a Trends are from the SEER 9 areas (San Francisco, Connecticut, Detroit, Hawaii, Iowa, New Mexico, Seattle, Utah, and Atlanta).

^b Trends are from the NCHS public use data file for the total US.

* The APC is significantly different from zero (p<.05).

Table IV-2
 FEMALE BREAST CANCER (*In Situ*)

TRENDS IN SEER INCIDENCE^a USING THE JOINPOINT REGRESSION PROGRAM, 1975-2004
 WITH UP TO THREE JOINPOINTS BY RACE AND AGE

		<u>Joinpoint Segment 1</u>		<u>Joinpoint Segment 2</u>		<u>Joinpoint Segment 3</u>		<u>Joinpoint Segment 4</u>	
		Year	APC	Year	APC	Year	APC	Year	APC
<u>SEER Cancer Incidence^a</u>									
All Races	All Ages	1975-1982	-0.8	1982-1986	32.2*	1986-2000	6.1*	2000-2004	-1.2
All Races	Under 50	1975-1982	-2.5	1982-1986	29.5*	1986-2004	3.2*		
All Races	50 and Over	1975-1981	-1.8	1981-1987	25.8*	1987-2000	6.9*	2000-2004	-1.6
White	All Ages	1975-1982	-0.7	1982-1986	32.9*	1986-2000	5.9*	2000-2004	-1.1
White	Under 50	1975-1982	-2.7	1982-1986	30.4*	1986-2004	3.1*		
White	50 and Over	1975-1981	-1.3	1981-1987	26.0*	1987-2000	6.7*	2000-2004	-1.4
Black	All Ages	1975-1981	3.0	1981-1988	18.5*	1988-1999	7.6*	1999-2004	-0.4
Black	Under 50	1975-1997	8.0*	1997-2004	-1.4				
Black	50 and Over	1975-1980	-2.0	1980-1988	20.8*	1988-2000	8.1*	2000-2004	-1.8
<u>SEER Delay-Adjusted Incidence^a</u>									
All Races	All Ages	1975-1982	-0.8	1982-1986	32.2*	1986-2000	6.1*	2000-2004	-1.0
All Races	Under 50	1975-1982	-2.5	1982-1986	29.4*	1986-2004	3.2*		
All Races	50 and Over	1975-1981	-1.9	1981-1987	25.8*	1987-2000	6.9*	2000-2004	-1.4
White	All Ages	1975-1982	-0.7	1982-1986	32.9*	1986-2000	6.0*	2000-2004	-0.8
White	Under 50	1975-1982	-2.7	1982-1986	30.3*	1986-2004	3.2*		
White	50 and Over	1975-1981	-1.3	1981-1987	26.0*	1987-2000	6.7*	2000-2004	-1.2
Black	All Ages	1975-1981	3.0	1981-1988	18.6*	1988-1999	7.6*	1999-2004	-0.2
Black	Under 50	1975-1997	8.0*	1997-2004	-1.3				
Black	50 and Over	1975-1980	-2.0	1980-1988	20.8*	1988-2000	8.1*	2000-2004	-1.6

Joinpoint Regression Program Version 3.0, April 2005, National Cancer Institute. (<http://srab.cancer.gov/joinpoint/>).

The APC is the Annual Percent Change based on rates age-adjusted to the 2000 US Std Population (19 age groups - Census P25-1130).

^a Trends are from the SEER 9 areas (San Francisco, Connecticut, Detroit, Hawaii, Iowa, New Mexico, Seattle, Utah, and Atlanta).

* The APC is significantly different from zero ($p < .05$).

Table IV-3
BREAST CANCER (Invasive)

AGE ADJUSTED SEER INCIDENCE^a RATES BY YEAR, RACE AND SEX

	All Races			Whites			Blacks		
	Total	Males	Females	Total	Males	Females	Total	Males	Females
<u>AGE-ADJUSTED RATES</u>									
YEAR OF DIAGNOSIS:									
1975	58.1	0.9	105.1	59.5	0.9	107.4	52.2	-	93.7
1976	56.4	1.1	101.9	58.1	1.1	104.8	48.0	-	85.3
1977	56.0	1.0	100.8	57.5	0.9	103.4	49.7	-	87.0
1978	55.8	0.9	100.6	57.5	0.9	103.6	48.3	-	86.1
1979	56.8	1.0	102.1	58.3	0.9	104.8	49.8	-	86.8
1980	56.8	0.9	102.1	58.5	1.0	105.0	50.5	-	89.2
1981	59.3	1.0	106.3	61.2	0.9	109.9	54.4	-	94.2
1982	59.2	1.0	106.4	61.1	0.9	109.9	53.9	-	93.5
1983	61.9	1.0	111.1	63.7	1.1	114.5	58.8	-	103.4
1984	64.4	0.9	115.9	66.5	0.9	119.8	58.1	-	102.0
1985	69.0	1.0	124.1	71.0	1.0	127.8	63.9	-	111.4
1986	70.4	0.9	126.8	72.3	1.0	130.4	66.2	-	114.9
1987	74.8	1.0	134.4	77.8	1.0	140.3	63.0	-	109.3
1988	73.0	1.2	131.2	75.6	1.2	136.3	68.9	2.8	118.6
1989	70.7	1.1	127.1	73.3	1.1	132.3	60.4	-	104.7
1990	73.1	1.1	131.7	75.3	1.1	136.2	68.3	-	118.2
1991	74.0	1.1	133.7	76.6	1.2	138.8	67.3	-	117.3
1992	72.9	1.0	131.8	74.7	1.0	135.6	71.3	-	123.5
1993	71.2	1.1	129.1	73.1	1.0	133.1	68.8	-	119.4
1994	72.0	1.1	130.8	74.2	1.1	135.6	70.3	-	122.0
1995	72.7	1.0	132.4	75.0	0.9	137.4	71.7	-	123.9
1996	73.2	1.3	133.4	75.2	1.3	137.9	71.1	-	123.3
1997	75.3	1.1	137.5	77.5	1.1	142.4	71.7	-	123.9
1998	77.1	1.1	141.0	79.5	1.1	146.4	70.3	-	122.5
1999	76.9	1.0	140.8	79.3	1.0	146.4	72.2	2.2	124.7
2000	74.0	1.2	135.8	77.0	1.2	142.6	67.2	2.9	115.7
2001	74.8	1.2	137.4	77.6	1.2	143.8	65.4	1.5	113.3
2002	72.7	1.2	133.9	75.0	1.1	139.6	69.2	2.1	119.8
2003	67.6	1.3	124.6	69.5	1.3	129.3	69.4	-	120.6
2004	67.3	1.2	124.3	68.7	1.2	128.2	68.6	1.6	119.3
1975-2004	68.6	1.1	124.5	70.6	1.1	128.5	64.3	1.6	111.9

^a SEER 9 areas (San Francisco, Connecticut, Detroit, Hawaii, Iowa, New Mexico, Seattle, Utah, and Atlanta). Rates are per 100,000 and are age-adjusted to the 2000 US Std Population (19 age groups - Census P25-1130).

- Statistic not shown. Rate based on less than 16 cases for the time interval.

Table IV-4
BREAST CANCER (Invasive)

AGE-ADJUSTED U.S. DEATH^a RATES BY YEAR, RACE AND SEX

	<u>All Races</u>			<u>Whites</u>			<u>Blacks</u>		
	<u>Total</u>	<u>Males</u>	<u>Females</u>	<u>Total</u>	<u>Males</u>	<u>Females</u>	<u>Total</u>	<u>Males</u>	<u>Females</u>
<u>AGE-ADJUSTED RATES</u>									
<u>YEAR OF DEATH:</u>									
1975	17.8	0.4	31.4	18.0	0.4	31.8	16.8	0.4	29.5
1976	18.1	0.4	31.8	18.2	0.4	32.2	17.6	0.6	30.5
1977	18.5	0.4	32.5	18.6	0.4	32.7	18.9	0.5	32.8
1978	18.0	0.4	31.7	18.1	0.3	31.9	18.6	0.6	32.1
1979	17.7	0.3	31.2	17.9	0.3	31.5	17.9	0.5	30.8
1980	18.0	0.3	31.7	18.1	0.3	31.9	18.4	0.4	31.7
1981	18.2	0.3	31.9	18.3	0.3	32.1	19.0	0.5	32.6
1982	18.4	0.3	32.2	18.4	0.3	32.3	19.7	0.6	33.7
1983	18.3	0.3	32.1	18.4	0.3	32.2	19.6	0.5	33.5
1984	18.8	0.3	32.9	18.8	0.3	32.9	21.0	0.5	35.9
1985	18.8	0.3	33.0	18.9	0.3	33.1	20.3	0.4	34.9
1986	18.8	0.3	32.9	18.8	0.3	32.9	20.7	0.4	35.4
1987	18.7	0.3	32.7	18.6	0.3	32.6	21.5	0.5	36.7
1988	19.0	0.3	33.2	18.9	0.3	33.1	22.4	0.9	37.8
1989	19.0	0.3	33.2	18.9	0.3	33.2	21.6	0.5	36.6
1990	18.9	0.3	33.1	18.8	0.3	33.0	22.5	0.5	38.0
1991	18.7	0.3	32.7	18.5	0.3	32.4	22.6	0.4	38.3
1992	18.1	0.3	31.6	17.9	0.3	31.4	21.9	0.4	37.1
1993	18.0	0.4	31.4	17.7	0.3	31.1	22.6	0.7	38.0
1994	17.7	0.4	30.9	17.4	0.3	30.6	22.4	0.6	37.7
1995	17.4	0.4	30.6	17.1	0.3	30.1	22.7	0.8	38.2
1996	16.8	0.3	29.5	16.5	0.3	29.0	22.1	0.7	37.1
1997	16.1	0.3	28.2	15.7	0.3	27.6	22.3	0.6	37.4
1998	15.7	0.3	27.5	15.3	0.3	27.0	21.1	0.6	35.5
1999	15.2	0.3	26.6	14.8	0.3	26.0	20.9	0.7	35.2
2000	15.2	0.4	26.6	14.9	0.4	26.2	20.5	0.6	34.4
2001	14.7	0.3	26.0	14.3	0.3	25.4	20.5	0.6	34.5
2002	14.5	0.3	25.6	14.1	0.3	25.0	20.3	0.6	34.1
2003	14.2	0.3	25.2	13.8	0.3	24.6	20.2	0.5	34.1
2004	13.7	0.3	24.4	13.3	0.3	23.8	19.1	0.5	32.3
1975-2004	17.2	0.3	30.2	17.1	0.3	30.1	20.6	0.6	35.1

^a NCHS public use data file for the total US. Rates are per 100,000 and are age-adjusted to the 2000 US Std Population (19 age groups - Census P25-1130).

- Statistic not shown. Rate based on less than 16 cases for the time interval.

Table IV-5
 FEMALE BREAST CANCER (Invasive)

AGE-ADJUSTED SEER INCIDENCE^a RATES BY YEAR, RACE AND AGE

	All Races, Females			White Females			Black Females		
	All	<50	50+	All	<50	50+	All	<50	50+
<u>SEER INCIDENCE RATES</u>									
YEAR OF DIAGNOSIS:									
1975	105.1	40.6	273.9	107.4	40.7	281.8	93.7	42.6	227.5
1976	101.9	40.0	264.0	104.8	40.9	272.2	85.3	37.8	209.8
1977	100.8	39.1	262.4	103.4	39.4	271.0	87.0	37.6	216.4
1978	100.6	38.8	262.3	103.6	39.2	272.0	86.1	40.2	206.1
1979	102.1	38.0	269.9	104.8	38.6	278.0	86.8	37.7	215.3
1980	102.1	37.7	270.7	105.0	38.3	279.8	89.2	37.4	224.9
1981	106.3	39.2	282.0	109.9	40.1	292.5	94.2	38.9	239.3
1982	106.4	40.5	279.0	109.9	41.3	289.8	93.5	37.9	239.0
1983	111.1	40.2	296.8	114.5	40.9	307.2	103.4	41.2	266.0
1984	115.9	42.3	308.5	119.8	43.1	320.8	102.0	44.5	252.4
1985	124.1	44.3	333.1	127.8	44.5	345.9	111.4	45.3	284.4
1986	126.8	44.4	342.4	130.4	45.2	353.5	114.9	45.3	297.0
1987	134.4	45.4	367.5	140.3	46.5	385.8	109.3	43.1	282.7
1988	131.2	44.0	359.7	136.3	45.0	375.3	118.6	42.9	316.6
1989	127.1	43.4	346.4	132.3	44.4	362.3	104.7	42.2	268.5
1990	131.7	45.6	357.2	136.2	45.4	373.9	118.2	48.8	299.7
1991	133.7	47.1	360.3	138.8	47.2	378.7	117.3	50.9	291.0
1992	131.8	43.4	363.5	135.6	43.6	376.6	123.5	46.9	324.1
1993	129.1	42.7	355.1	133.1	43.2	368.4	119.4	45.2	313.6
1994	130.8	42.3	362.5	135.6	42.6	378.8	122.0	47.2	317.8
1995	132.4	43.1	366.3	137.4	43.7	382.9	123.9	45.4	329.4
1996	133.4	43.4	369.1	137.9	43.8	384.3	123.3	43.9	331.1
1997	137.5	43.3	384.0	142.4	44.0	400.0	123.9	43.9	333.6
1998	141.0	45.3	391.4	146.4	45.6	410.2	122.5	46.1	322.7
1999	140.8	43.5	395.6	146.4	44.8	412.7	124.7	43.3	338.0
2000	135.8	43.2	378.3	142.6	43.9	401.2	115.7	44.1	303.2
2001	137.4	43.4	383.4	143.8	44.4	404.2	113.3	39.2	307.4
2002	133.9	42.2	374.1	139.6	42.9	392.8	119.8	39.8	329.4
2003	124.6	42.5	339.6	129.3	43.2	354.5	120.6	42.0	326.4
2004	124.3	43.5	335.7	128.2	43.4	350.2	119.3	44.9	314.3
1975-2004	124.5	42.8	338.4	128.5	43.3	351.5	111.9	43.3	291.5

^a SEER 9 areas (San Francisco, Connecticut, Detroit, Hawaii, Iowa, New Mexico, Seattle, Utah, and Atlanta). Rates are per 100,000 and are age-adjusted to the 2000 US Std Population (19 age groups - Census P25-1130).
 - Statistic not shown. Rate based on less than 16 cases for the time interval.

Table IV-6
 FEMALE BREAST CANCER (Invasive)

AGE-ADJUSTED U.S. DEATH^a RATES BY YEAR, RACE AND AGE

	All Races, Females			White Females			Black Females		
	All	<50	50+	All	<50	50+	All	<50	50+
<u>U.S. DEATH RATES</u>									
YEAR OF DEATH:									
1975	31.4	9.1	89.9	31.8	9.0	91.4	29.5	10.7	78.8
1976	31.8	8.7	92.2	32.2	8.6	93.8	30.5	10.2	83.5
1977	32.5	8.9	94.3	32.7	8.7	95.3	32.8	10.5	91.1
1978	31.7	8.7	92.1	31.9	8.5	93.3	32.1	11.4	86.5
1979	31.2	8.6	90.5	31.5	8.3	92.1	30.8	11.4	81.8
1980	31.7	8.6	92.2	31.9	8.4	93.6	31.7	10.8	86.3
1981	31.9	8.5	93.3	32.1	8.2	94.8	32.6	11.5	87.7
1982	32.2	8.4	94.4	32.3	8.2	95.5	33.7	11.2	92.8
1983	32.1	8.2	94.7	32.2	7.9	95.8	33.5	11.2	92.1
1984	32.9	8.6	96.6	32.9	8.2	97.5	35.9	12.5	97.2
1985	33.0	8.6	96.9	33.1	8.3	98.1	34.9	12.0	94.6
1986	32.9	8.6	96.3	32.9	8.3	97.5	35.4	12.9	94.6
1987	32.7	8.4	96.1	32.6	8.0	96.9	36.7	12.9	99.0
1988	33.2	8.4	98.2	33.1	8.0	98.8	37.8	12.7	103.4
1989	33.2	8.4	98.2	33.2	8.1	99.2	36.6	12.4	100.0
1990	33.1	8.3	98.1	33.0	8.0	98.5	38.0	12.0	106.1
1991	32.7	8.2	96.9	32.4	7.7	97.2	38.3	12.3	106.3
1992	31.6	7.8	94.2	31.4	7.4	94.5	37.1	12.0	102.7
1993	31.4	7.4	94.2	31.1	7.0	94.2	38.0	11.7	107.1
1994	30.9	7.4	92.6	30.6	6.9	92.5	37.7	11.7	105.9
1995	30.6	7.3	91.5	30.1	6.8	91.1	38.2	11.7	107.5
1996	29.5	6.9	88.5	29.0	6.4	88.3	37.1	11.7	103.6
1997	28.2	6.7	84.5	27.6	6.2	83.6	37.4	11.0	106.6
1998	27.5	6.3	83.1	27.0	5.8	82.5	35.5	10.6	100.7
1999	26.6	5.7	81.2	26.0	5.2	80.4	35.2	10.3	100.5
2000	26.6	5.9	81.0	26.2	5.4	80.6	34.4	9.9	98.3
2001	26.0	5.9	78.7	25.4	5.4	77.9	34.5	9.9	99.1
2002	25.6	5.6	77.8	25.0	5.1	77.1	34.1	10.0	97.2
2003	25.2	5.6	76.5	24.6	5.1	75.6	34.1	9.7	97.9
2004	24.4	5.2	74.6	23.8	4.6	74.0	32.3	9.3	92.4
1975-2004	30.2	7.4	90.0	30.1	7.0	90.4	35.1	11.1	97.7

^a NCHS public use data file for the total US. Rates are per 100,000 and are age-adjusted to the 2000 US Std Population (19 age groups - Census P25-1130).

- Statistic not shown. Rate based on less than 16 cases for the time interval.

Table IV-7
 FEMALE BREAST CANCER (*In Situ*)

AGE ADJUSTED SEER INCIDENCE^a RATES BY YEAR, RACE AND AGE

	All Races, Females			White Females			Black Females		
	All	<50	50+	All	<50	50+	All	<50	50+
<u>SEER INCIDENCE RATES</u>									
YEAR OF DIAGNOSIS:									
1975	5.8	3.8	11.2	5.9	3.8	11.3	3.9	-	8.3
1976	5.3	2.7	12.0	5.4	2.9	11.8	3.3	-	9.4
1977	4.3	2.6	8.7	4.3	2.6	8.9	3.0	-	-
1978	4.4	2.4	9.7	4.6	2.5	9.9	3.3	-	-
1979	4.6	2.8	9.2	4.7	2.9	9.4	4.8	-	9.6
1980	4.9	3.0	9.7	5.0	3.1	10.2	3.7	-	-
1981	5.0	2.6	11.0	4.9	2.5	11.3	4.1	-	8.7
1982	5.3	2.7	12.0	5.3	2.7	12.2	5.6	2.7	12.9
1983	6.1	3.0	14.1	6.2	3.0	14.5	5.4	-	13.2
1984	8.6	4.8	18.7	9.2	5.2	19.6	6.3	2.4	16.8
1985	11.5	5.9	26.2	12.1	6.3	27.4	8.2	3.5	20.6
1986	13.6	6.8	31.6	14.3	7.2	32.8	9.2	5.1	20.0
1987	17.4	7.8	42.4	18.2	8.3	44.3	12.3	5.5	30.1
1988	17.6	8.2	42.2	18.1	8.5	43.2	16.1	7.4	38.9
1989	16.5	7.0	41.4	17.1	7.3	42.7	14.5	5.5	38.1
1990	19.1	8.4	47.2	19.9	8.8	49.2	15.1	5.5	40.0
1991	19.8	8.8	48.6	20.4	8.9	50.8	15.3	7.3	36.3
1992	21.4	9.0	54.0	22.2	9.2	56.2	19.1	6.8	51.2
1993	20.7	8.4	53.1	21.4	8.8	54.2	16.5	6.1	43.9
1994	22.3	8.8	57.8	22.9	9.1	59.2	20.1	7.5	53.3
1995	24.7	9.6	64.1	25.0	9.9	64.6	22.6	6.4	65.2
1996	25.4	9.8	66.1	25.9	9.8	68.1	22.4	7.7	61.0
1997	28.4	11.1	73.6	29.0	11.2	75.4	28.0	11.4	71.4
1998	32.8	12.0	87.3	33.8	12.3	89.9	30.3	10.8	81.5
1999	32.8	12.0	87.2	33.2	12.2	88.0	29.7	10.4	80.2
2000	32.8	11.8	87.9	33.9	12.5	89.9	29.3	8.0	85.1
2001	33.5	11.5	91.2	34.1	12.0	92.0	31.5	8.9	90.7
2002	33.8	11.8	91.6	34.3	12.2	92.2	28.4	8.6	80.5
2003	32.0	11.8	84.9	32.9	12.3	87.1	29.3	9.2	81.9
2004	32.5	12.5	85.1	33.2	12.7	86.9	30.2	9.6	84.0
1975-2004	19.6	8.3	49.2	19.7	8.4	49.3	18.0	6.7	47.4

^a SEER 9 areas (San Francisco, Connecticut, Detroit, Hawaii, Iowa, New Mexico, Seattle, Utah, and Atlanta). Rates are per 100,000 and are age-adjusted to the 2000 US Std Population (19 age groups - Census P25-1130).

- Statistic not shown. Rate based on less than 16 cases for the time interval.

Table IV-8
BREAST CANCER (Invasive)

SEER INCIDENCE^a AND U.S. DEATH^b RATES, AGE-ADJUSTED AND AGE-SPECIFIC RATES, BY RACE AND SEX

	All Races			Whites			Blacks		
	Total	Males	Females	Total	Males	Females	Total	Males	Females
<u>SEER INCIDENCE</u>									
<u>AGE AT DIAGNOSIS</u>									
AGE-ADJUSTED RATES, 2000-2004									
All ages	69.6	1.1	127.8	71.5	1.2	132.5	68.0	1.7	118.3
Under 65	43.6	0.5	84.9	44.2	0.4	87.2	44.3	0.8	81.5
65 and over	249.1	5.9	424.4	260.4	6.1	446.0	231.7	8.0	372.9
All ages(IARC world std) ^c	49.2	0.7	92.4	50.5	0.7	95.8	48.3	1.2	85.8
AGE-SPECIFIC RATES, 2000-2004									
<1	-	-	-	-	-	-	-	-	-
1-4	-	-	-	-	-	-	-	-	-
5-9	-	-	-	-	-	-	-	-	-
10-14	-	-	-	-	-	-	-	-	-
15-19	0.1	-	0.2	-	-	-	-	-	-
20-24	0.7	-	1.4	0.7	-	1.4	1.0	-	2.0
25-29	3.8	-	7.7	3.6	-	7.5	5.4	-	10.4
30-34	12.6	0.1	25.5	12.2	-	25.1	16.8	-	32.1
35-39	29.6	0.1	59.5	28.8	-	58.7	34.5	-	65.7
40-44	59.0	0.3	117.4	58.8	0.3	118.6	62.3	-	117.8
45-49	94.9	0.8	186.7	95.4	0.8	190.1	96.4	1.2	180.2
50-54	121.8	1.1	237.3	124.1	1.0	244.6	124.1	2.0	227.9
55-59	159.7	2.2	307.9	163.9	2.1	319.5	155.6	4.4	281.1
60-64	191.6	3.1	363.7	199.3	3.0	381.9	177.3	5.5	315.3
65-69	223.2	4.4	410.9	234.9	4.5	436.5	201.9	6.3	350.8
70-74	242.9	5.2	432.3	253.9	5.5	455.9	227.8	6.0	381.8
75-79	275.8	6.1	464.8	288.9	6.1	488.6	250.9	10.1	399.2
80-84	271.2	7.5	435.2	281.6	7.6	451.8	258.0	-	392.7
85+	247.3	8.7	355.3	256.0	9.1	366.1	242.2	-	335.2
<u>U.S. MORTALITY</u>									
<u>AGE AT DEATH</u>									
AGE-ADJUSTED RATES, 2000-2004									
All ages	14.5	0.3	25.5	14.1	0.3	25.0	20.1	0.6	33.8
Under 65	6.8	0.1	13.1	6.3	0.1	12.4	11.1	0.2	20.2
65 and over	67.6	1.8	111.4	67.6	1.8	112.0	82.3	3.0	127.9
All ages(IARC world std) ^c	9.1	0.2	16.7	8.8	0.2	16.2	13.2	0.3	23.0
AGE-SPECIFIC RATES, 2000-2004									
<1	-	-	-	-	-	-	-	-	-
1-4	-	-	-	-	-	-	-	-	-
5-9	-	-	-	-	-	-	-	-	-
10-14	-	-	-	-	-	-	-	-	-
15-19	-	-	-	-	-	-	-	-	-
20-24	0.1	-	0.1	0.0	-	0.1	0.1	-	0.2
25-29	0.4	-	0.8	0.3	-	0.6	0.9	-	1.7
30-34	1.7	-	3.5	1.5	-	3.0	3.6	-	6.9
35-39	4.2	0.0	8.3	3.7	0.0	7.5	7.9	-	14.8
40-44	7.9	0.1	15.6	7.1	0.0	14.1	14.5	-	27.1
45-49	12.8	0.1	25.1	11.7	0.1	23.1	22.6	0.3	42.0
50-54	19.7	0.3	38.2	18.4	0.3	36.1	32.1	0.6	58.8
55-59	26.8	0.5	51.6	25.6	0.4	49.8	42.1	0.8	76.0
60-64	33.9	0.7	64.0	33.1	0.7	63.0	47.7	1.5	83.9
65-69	41.4	1.0	76.3	41.0	1.0	76.2	54.1	1.6	93.0
70-74	52.6	1.4	93.4	52.4	1.4	94.0	66.1	2.5	108.8
75-79	67.4	2.0	113.6	67.7	1.9	114.8	80.3	2.7	126.8
80-84	87.4	2.5	138.9	87.7	2.4	139.8	104.0	3.7	155.9
85+	134.1	3.6	190.2	134.5	3.5	190.9	156.4	7.1	213.7

^a SEER 17 areas. Rates are per 100,000 and are age-adjusted to the 2000 US Std Population (19 age groups - Census P25-1130), unless noted.

^b NCHS public use data file for the total US. Rates are per 100,000 and are age-adjusted to the 2000 US Std Population (19 age groups - Census P25-1130), unless noted.

^c Rates are per 100,000 and are age-adjusted to the IARC world standard population.

- Statistic not shown. Rate based on less than 16 cases for the time interval.

Table IV-9
FEMALE BREAST CANCER (In Situ)

SEER INCIDENCE^a RATES, AGE-ADJUSTED AND AGE-SPECIFIC RATES, BY RACE

	<u>All Races, Females</u>	<u>White Females</u>	<u>Black Females</u>
<u>AGE-ADJUSTED RATES, 2000-2004</u>			
AGE AT DIAGNOSIS:			
All ages	29.4	30.2	25.4
Under 65	21.9	22.6	17.6
65 and over	81.3	83.1	79.1
All ages(IARC world std) ^b	22.2	22.8	19.0
<u>AGE-SPECIFIC RATES, 2000-2004</u>			
AGE AT DIAGNOSIS:			
<1	-	-	-
1-4	-	-	-
5-9	-	-	-
10-14	-	-	-
15-19	-	-	-
20-24	0.2	0.2	-
25-29	0.7	0.8	-
30-34	2.4	2.3	3.0
35-39	10.0	10.5	8.4
40-44	33.6	34.9	22.8
45-49	54.1	55.9	39.9
50-54	67.0	68.3	53.0
55-59	80.3	82.6	71.4
60-64	86.7	89.1	74.9
65-69	96.8	99.3	94.2
70-74	92.4	94.9	93.4
75-79	86.5	88.2	84.2
80-84	65.0	66.4	54.0
85+	33.9	33.6	36.7

^a SEER 17 areas. Rates are per 100,000 and are age-adjusted to the 2000 US Std Population (19 age groups - Census P25-1130), unless noted.

^b Rates are per 100,000 and are age-adjusted to the IARC world standard population.

- Statistic not shown. Rate based on less than 16 cases for the time interval.

Table IV-10
FEMALE BREAST CANCER (Invasive)

SURVIVAL RATES, BY RACE, DIAGNOSIS YEAR, STAGE AND AGE

	All Races, Females			White Females			Black Females		
	All	<50	50+	All	<50	50+	All	<50	50+
<u>5-YR RELATIVE SURVIVAL RATES</u>									
YEAR OF DIAGNOSIS:									
1960-1963 ^a	-	-	-	63	-	-	46	-	-
1970-1973 ^a	-	-	-	68	-	-	51	-	-
1975-1977 ^b	75.1	76.7	74.6	75.9	77.9	75.2	62.3	62.6	62.2
1978-1980 ^b	74.9	75.6	74.7	75.6	76.2	75.4	63.8	66.9	62.0
1981-1983 ^b	76.7	77.5	76.5	77.7	78.7	77.4	64.1	65.2	63.4
1984-1986 ^b	79.3	77.9	79.8	80.4	79.7	80.6	65.1	63.8	65.8
1987-1989 ^b	84.2	81.5	85.2	85.3	82.8	86.1	71.2	69.5	72.1
1990-1992 ^b	85.5	83.4	86.3	86.7	85.1	87.3	71.7	70.0	72.8
1993-1995 ^b	86.6	84.3	87.5	87.9	86.3	88.5	72.8	70.0	74.6
1996-2003 ^b	89.2 ^e	87.3 ^e	89.9 ^e	90.3 ^e	89.0 ^e	90.7 ^e	77.9 ^e	76.0 ^e	79.1 ^e
<u>5-YR PERIOD SURVIVAL RATES^{cd}</u>									
YEAR OF DIAGNOSIS:									
1996-2003	89.1	87.3	89.8	90.2	88.6	90.7	78.3	76.8	79.2
<u>STAGE DISTRIBUTION (%) 1996-2003^c</u>									
All Stages									
Number of cases	253,801	63,159	190,642	211,686	48,951	162,735	22,307	7,442	14,865
Percent	100%	100%	100%	100%	100%	100%	100%	100%	100%
Localized	61	54	63	62	54	64	51	46	54
Regional	31	39	28	30	39	28	37	43	33
Distant	6	5	6	6	5	6	9	9	10
Unstaged	2	2	2	2	1	2	3	2	3
<u>5-YR RELATIVE SURVIVAL RATES, 1996-2003^c</u>									
AGE AT DIAGNOSIS:									
<45	84.9	-	-	86.6	-	-	72.5	-	-
45-54	88.9	-	-	90.1	-	-	78.4	-	-
55-64	89.8	-	-	91.0	-	-	78.6	-	-
65-74	90.4	-	-	91.1	-	-	80.1	-	-
75+	88.4	-	-	89.0	-	-	78.5	-	-
Under 65	88.3	-	-	89.7	-	-	76.6	-	-
65 and over	89.6	-	-	90.3	-	-	79.4	-	-
STAGE:									
All Stages	88.6	86.7	89.4	89.7	88.2	90.3	77.3	75.1	78.5
Localized	98.0	95.4	98.9	98.5	95.8	99.3	93.2	90.5	94.6
Regional	83.5	82.7	84.0	84.9	84.5	85.1	72.4	71.6	73.0
Distant	26.7	33.5	24.4	28.3	37.9	25.4	17.4	17.4	17.3
Unstaged	56.9	70.0	52.8	57.6	74.1	53.1	46.1	50.2	43.8
<i>IN SITU</i> ^h	100.0	100.0	100.0	100.0	100.0	100.0	100.0	99.2	100.0

^a Rates are based on End Results data from a series of hospital registries and one population-based registry.

^b Rates are from the SEER 9 areas (San Francisco, Connecticut, Detroit, Hawaii, Iowa, New Mexico, Seattle, Utah, Atlanta). Rates are based on follow-up of patients into 2004.

^c Rates are from the SEER 17 areas (San Francisco, Connecticut, Detroit, Hawaii, Iowa, New Mexico, Seattle, Utah, Atlanta, San Jose-Monterey, Los Angeles, Alaska Native Registry, Rural Georgia, California excluding SF/SJM/LA, Kentucky, Louisiana and New Jersey). California excluding SF/SJM/LA, Kentucky, Louisiana, and New Jersey contribute cases for diagnosis years 2000-2003. The remaining 13 SEER Areas contribute cases for the entire period 1996-2003. Rates are based on follow-up of patients into 2004.

^d Period survival provides a more up-to-date estimate of survival by piecing together the most recent conditional survival estimates from several cohorts. It is computed here using three calendar year blocks (2001-2003: 0-1 year survival), (2000-2002: 1-2 year survival), (1999-2001: 2-3 year survival), (1998-2000: 3-4 year survival), (1997-1999: 4-5 years survival).

^e The difference in rates between 1975-1977 and 1996-2003 is statistically significant (p<.05).

^f The standard error of the survival rate is between 5 and 10 percentage points.

^g The standard error of the survival rate is greater than 10 percentage points.

^h *In situ* cases are not included in the All Stages group.

- Statistic could not be calculated due to fewer than 16 cases during the time period.

Table IV-11
FEMALE BREAST CANCER (Invasive)

SURVIVAL RATES^a

By Year of Diagnosis

All Races, Females

Year of Diagnosis

	1975- 1979	1980- 1984	1985	1986	1987	1988	1989	1990	1991	1992	1993	1994	1995	1996	1997	1998	1999	2000	2001	2002	2003
Relative Survival Rates (SEER ^b)																					
1-year	94.7	95.5	95.8	96.3	96.9	96.8	97.0	97.0	97.4	97.4	97.2	97.6	97.3	97.2	97.6	97.7	97.6	97.7	97.5	97.7	98.0
2-year	88.9	90.5	91.2	91.7	93.3	93.4	93.3	93.4	93.9	94.5	94.1	94.4	94.2	94.0	94.6	95.1	95.3	95.6	95.3	95.7	
3-year	83.4	85.1	86.3	87.0	89.3	90.1	90.0	89.8	90.3	91.2	91.0	91.2	91.5	91.1	92.2	93.2	93.3	93.7	93.0		
4-year	78.7	80.7	82.3	83.5	86.1	87.3	87.1	87.0	87.8	88.3	88.3	88.8	89.0	89.2	90.1	91.3	91.4	91.8			
5-year	74.9	76.9	78.8	80.5	83.3	84.7	84.6	84.8	85.5	86.1	86.0	86.8	86.9	86.9	88.6	89.7	89.7				
6-year	71.8	73.9	76.3	78.2	80.7	82.5	82.3	82.7	83.6	84.3	84.0	85.2	85.6	85.2	87.1	88.5					
7-year	69.1	71.1	74.1	75.9	78.5	80.7	80.6	80.8	81.8	82.6	82.3	83.8	83.9	84.1	86.0						
8-year	66.9	68.8	72.3	74.4	77.0	79.2	79.2	79.5	80.3	81.7	80.8	83.0	82.7	82.7							
9-year	64.7	66.9	70.4	72.8	75.2	77.5	77.9	78.1	78.9	80.7	79.7	81.8	81.4								
10-year	62.9	65.0	68.7	71.1	73.9	76.5	76.7	77.0	77.9	79.8	78.7	80.6									
11-year	61.3	63.2	67.3	70.0	72.3	75.4	75.8	75.9	77.1	78.7	77.4										
12-year	59.7	62.0	66.2	68.6	71.0	74.3	74.3	75.0	75.9	77.7											
13-year	58.6	61.0	65.3	67.6	69.8	73.2	73.5	73.9	75.0												
14-year	57.6	59.7	64.6	66.7	68.6	72.6	72.5	72.8													
15-year	56.6	58.9	63.6	65.3	67.9	71.7	71.6														
16-year	55.7	57.8	62.5	64.4	66.7	71.1															
17-year	54.8	56.9	61.3	63.8	66.3																
18-year	54.1	56.2	60.4	63.3																	
19-year	53.3	55.6	60.1																		
20-year	52.7	54.9																			

^a Survival rates are relative rates expressed as percents.

^b Rates are from the SEER 9 areas (San Francisco, Connecticut, Detroit, Hawaii, Iowa, New Mexico, Seattle, Utah, and Atlanta).

Table IV-12
FEMALE BREAST CANCER (Under 50) (Invasive)

SURVIVAL RATES^a

By Year of Diagnosis

All Races, Females

Year of Diagnosis

	1975- 1979	1980- 1984	1985	1986	1987	1988	1989	1990	1991	1992	1993	1994	1995	1996	1997	1998	1999	2000	2001	2002	2003
Relative Survival Rates (SEER ^b)																					
1-year	96.8	97.6	97.6	98.0	98.0	98.4	98.1	97.6	98.5	98.4	98.0	98.4	98.0	97.8	98.1	98.4	98.6	98.5	98.4	98.6	98.9
2-year	90.9	91.5	91.9	92.3	92.7	93.8	93.1	93.1	93.9	94.6	94.3	93.6	93.7	93.8	94.7	95.2	95.1	95.7	94.8	95.7	
3-year	84.7	85.7	85.8	86.1	87.3	89.2	88.7	88.5	90.0	90.8	90.2	89.3	90.0	90.7	91.7	92.3	92.2	93.1	91.5		
4-year	80.1	81.1	81.2	82.1	83.2	85.6	84.9	85.0	86.8	86.5	87.1	86.2	86.7	88.2	88.8	89.5	90.0	90.4			
5-year	76.2	77.2	77.9	78.4	79.9	82.4	82.1	82.4	83.9	83.8	84.7	84.0	84.2	85.5	86.8	87.4	88.0				
6-year	73.4	74.2	75.6	75.9	77.4	80.4	79.7	80.1	81.7	81.7	82.9	81.9	82.3	83.2	84.7	85.4					
7-year	70.9	71.6	73.5	73.2	75.1	78.4	78.0	78.5	79.5	80.2	81.1	80.2	80.2	81.6	83.2						
8-year	68.9	69.5	71.8	71.5	73.6	76.7	76.6	76.6	78.0	78.6	79.5	78.9	78.6	79.9							
9-year	67.0	67.7	69.9	70.4	71.7	75.3	74.9	75.4	77.1	77.6	78.4	77.4	77.4								
10-year	65.5	66.3	68.7	69.3	70.2	73.9	74.2	74.2	76.2	76.7	77.2	76.4									
11-year	64.2	65.0	67.9	68.3	68.7	72.9	73.1	73.3	75.1	75.7	76.5										
12-year	62.8	64.0	66.7	67.1	67.3	72.4	72.0	72.4	73.7	75.0											
13-year	61.7	62.9	65.7	66.0	66.4	71.3	70.9	71.2	72.9												
14-year	60.9	61.8	65.0	65.3	65.5	70.8	70.2	70.7													
15-year	60.2	61.0	64.1	64.5	64.9	70.0	69.4														
16-year	59.4	60.3	63.3	63.9	64.2	69.3															
17-year	58.9	59.6	62.3	63.2	63.8																
18-year	58.3	58.9	61.5	62.6																	
19-year	57.6	58.5	61.0																		
20-year	56.9	57.9																			

^a Survival rates are relative rates expressed as percents.

^b Rates are from the SEER 9 areas (San Francisco, Connecticut, Detroit, Hawaii, Iowa, New Mexico, Seattle, Utah, and Atlanta).

Table IV-13
 FEMALE BREAST CANCER (50 and Over) (Invasive)

SURVIVAL RATES^a

By Year of Diagnosis

All Races, Females

Year of Diagnosis

	1975- 1979	1980- 1984	1985	1986	1987	1988	1989	1990	1991	1992	1993	1994	1995	1996	1997	1998	1999	2000	2001	2002	2003
Relative Survival Rates (SEER ^b)																					
1-year	94.0	94.9	95.3	95.8	96.5	96.3	96.6	96.8	97.0	97.1	96.9	97.3	97.1	97.0	97.4	97.5	97.3	97.4	97.3	97.4	97.6
2-year	88.3	90.1	91.0	91.5	93.5	93.3	93.4	93.5	93.9	94.4	94.1	94.7	94.3	94.0	94.5	95.1	95.4	95.6	95.5	95.7	
3-year	83.0	84.9	86.5	87.3	89.9	90.3	90.4	90.3	90.3	91.3	91.3	91.8	92.1	91.3	92.4	93.5	93.7	93.9	93.5		
4-year	78.2	80.6	82.6	84.0	87.0	87.8	87.9	87.7	88.1	89.0	88.7	89.7	89.9	89.6	90.6	91.9	92.0	92.4			
5-year	74.4	76.8	79.1	81.2	84.5	85.5	85.6	85.8	86.1	86.9	86.5	87.9	88.0	87.5	89.2	90.6	90.4				
6-year	71.2	73.8	76.5	79.1	81.8	83.3	83.3	83.7	84.4	85.3	84.5	86.6	86.9	86.1	88.1	89.8					
7-year	68.4	71.0	74.4	76.9	79.7	81.5	81.6	81.7	82.9	83.6	82.9	85.2	85.5	85.2	87.2						
8-year	66.1	68.6	72.5	75.5	78.4	80.2	80.3	80.7	81.3	83.1	81.4	84.7	84.5	84.0							
9-year	63.8	66.6	70.6	73.7	76.6	78.5	79.2	79.3	79.8	82.2	80.4	83.7	83.3								
10-year	61.9	64.5	68.7	71.9	75.5	77.7	77.9	78.3	78.7	81.2	79.5	82.5									
11-year	60.1	62.5	67.1	70.8	73.8	76.5	77.1	77.3	78.2	80.2	77.9										
12-year	58.4	61.3	66.0	69.4	72.8	75.2	75.6	76.4	77.1	79.1											
13-year	57.2	60.2	65.2	68.4	71.5	74.2	74.9	75.4	76.3												
14-year	56.1	58.8	64.5	67.5	70.2	73.5	73.9	74.2													
15-year	54.8	57.9	63.4	65.9	69.5	72.7	73.0														
16-year	53.8	56.7	62.2	64.9	68.3	72.2															
17-year	52.7	55.6	60.8	64.4	67.9																
18-year	51.8	54.8	59.8	63.9																	
19-year	50.9	54.1	59.5																		
20-year	50.2	53.3																			

^a Survival rates are relative rates expressed as percents.

^b Rates are from the SEER 9 areas (San Francisco, Connecticut, Detroit, Hawaii, Iowa, New Mexico, Seattle, Utah, and Atlanta).

Table IV-14
 FEMALE BREAST CANCER (Invasive)

Risk of Being Diagnosed With Cancer in 10, 20 and 30 Years, Lifetime Risk of Being Diagnosed with Cancer, and
 Lifetime Risk of Dying from Cancer Given Cancer Free At Current Age
 2002-2004 By Race/Ethnicity

Race/ Ethnicity	Current Age	Risk of Being Diagnosed with Cancer			Risk of Dying from Cancer	
		+10 yrs Percent (95% C.I.)	+20 yrs Percent (95% C.I.)	+30 yrs Percent (95% C.I.)	Eventually Percent (95% C.I.)	Eventually Percent (95% C.I.)
All Races	0	0.00 (0.00, 0.00)	0.00 (0.00, 0.00)	0.06 (0.05, 0.06)	12.28 (12.22, 12.35)	2.89 (2.88, 2.91)
	10	0.00 (0.00, 0.00)	0.06 (0.05, 0.06)	0.48 (0.47, 0.49)	12.42 (12.36, 12.49)	2.93 (2.91, 2.95)
	20	0.05 (0.05, 0.06)	0.48 (0.47, 0.49)	1.89 (1.87, 1.91)	12.45 (12.38, 12.52)	2.94 (2.92, 2.95)
	30	0.43 (0.42, 0.44)	1.84 (1.82, 1.86)	4.24 (4.21, 4.27)	12.46 (12.40, 12.53)	2.95 (2.93, 2.96)
	40	1.43 (1.42, 1.45)	3.86 (3.83, 3.89)	7.04 (6.99, 7.08)	12.19 (12.12, 12.26)	2.92 (2.90, 2.93)
	50	2.51 (2.49, 2.54)	5.79 (5.75, 5.84)	8.93 (8.87, 8.98)	11.12 (11.05, 11.19)	2.78 (2.76, 2.79)
	60	3.51 (3.48, 3.55)	6.87 (6.81, 6.92)	8.76 (8.70, 8.83)	9.21 (9.15, 9.28)	2.47 (2.45, 2.48)
	70	3.88 (3.83, 3.92)	6.07 (6.01, 6.13)	- (- , -)	6.59 (6.53, 6.65)	2.04 (2.02, 2.06)
80	3.04 (3.00, 3.09)	- (- , -)	- (- , -)	3.76 (3.71, 3.81)	1.55 (1.53, 1.57)	
White	0	0.00 (0.00, 0.00)	0.00 (0.00, 0.00)	0.05 (0.05, 0.06)	12.80 (12.72, 12.87)	2.89 (2.87, 2.90)
	10	0.00 (0.00, 0.00)	0.05 (0.05, 0.06)	0.48 (0.47, 0.49)	12.92 (12.84, 13.00)	2.92 (2.90, 2.93)
	20	0.05 (0.05, 0.06)	0.48 (0.47, 0.49)	1.91 (1.88, 1.93)	12.95 (12.87, 13.03)	2.92 (2.91, 2.94)
	30	0.43 (0.42, 0.44)	1.86 (1.84, 1.88)	4.34 (4.30, 4.37)	12.96 (12.89, 13.04)	2.93 (2.92, 2.95)
	40	1.45 (1.43, 1.47)	3.96 (3.92, 3.99)	7.31 (7.25, 7.36)	12.69 (12.61, 12.76)	2.91 (2.89, 2.92)
	50	2.59 (2.56, 2.61)	6.04 (5.99, 6.09)	9.35 (9.28, 9.42)	11.60 (11.52, 11.68)	2.78 (2.76, 2.80)
	60	3.69 (3.65, 3.73)	7.22 (7.16, 7.29)	9.19 (9.12, 9.26)	9.63 (9.55, 9.70)	2.48 (2.46, 2.50)
	70	4.08 (4.03, 4.13)	6.35 (6.29, 6.41)	- (- , -)	6.86 (6.79, 6.93)	2.05 (2.03, 2.07)
80	3.16 (3.11, 3.21)	- (- , -)	- (- , -)	3.87 (3.81, 3.93)	1.55 (1.53, 1.57)	
Black	0	0.00 (0.00, 0.00)	0.00 (0.00, 0.01)	0.07 (0.06, 0.08)	10.10 (9.91, 10.29)	3.23 (3.18, 3.28)
	10	0.00 (0.00, 0.01)	0.07 (0.06, 0.08)	0.53 (0.50, 0.56)	10.32 (10.13, 10.52)	3.30 (3.25, 3.35)
	20	0.07 (0.06, 0.08)	0.53 (0.50, 0.56)	1.87 (1.82, 1.93)	10.35 (10.15, 10.55)	3.31 (3.26, 3.37)
	30	0.46 (0.44, 0.49)	1.82 (1.76, 1.87)	4.04 (3.95, 4.13)	10.37 (10.17, 10.57)	3.33 (3.27, 3.38)
	40	1.38 (1.34, 1.43)	3.65 (3.56, 3.73)	6.24 (6.11, 6.38)	10.11 (9.91, 10.31)	3.27 (3.22, 3.33)
	50	2.38 (2.31, 2.46)	5.12 (5.00, 5.25)	7.52 (7.36, 7.70)	9.19 (8.99, 9.40)	3.06 (3.00, 3.11)
	60	3.04 (2.93, 3.14)	5.70 (5.54, 5.87)	7.14 (6.95, 7.33)	7.55 (7.35, 7.76)	2.64 (2.58, 2.69)
	70	3.26 (3.13, 3.39)	5.01 (4.84, 5.20)	- (- , -)	5.52 (5.32, 5.72)	2.17 (2.11, 2.23)
80	2.66 (2.51, 2.82)	- (- , -)	- (- , -)	3.43 (3.23, 3.63)	1.74 (1.68, 1.81)	

Devcan Version 6.2.0, April 2006, National Cancer Institute (<http://srab.cancer.gov/devcan/>).

Source: Incidence data are from the SEER 17 areas (San Francisco, Connecticut, Detroit, Hawaii, Iowa, New Mexico, Seattle, Utah, Atlanta, San Jose-Monterey, Los Angeles, Alaska Native Registry, Rural Georgia, California excluding SF/SJM/LA, Kentucky, Louisiana and New Jersey). Mortality data are from the NCHS public use data file for the total US.

- Statistic could not be calculated.

A percent or confidence interval value of 0.00 represents a value that is below 0.005.

Table IV-14 - continued
 FEMALE BREAST CANCER (Invasive)

Risk of Being Diagnosed With Cancer in 10, 20 and 30 Years, Lifetime Risk of Being Diagnosed with Cancer, and
 Lifetime Risk of Dying from Cancer Given Cancer Free At Current Age
 2002-2004 By Race/Ethnicity

Race/ Ethnicity	Current Age	Risk of Being Diagnosed with Cancer				Risk of Dying from Cancer	
		+10 yrs Percent (95% C.I.)	+20 yrs Percent (95% C.I.)	+30 yrs Percent (95% C.I.)	Eventually Percent (95% C.I.)	Eventually Percent (95% C.I.)	
Asian/ Pacific Islander	0	0.00 (0.00, 0.00)	0.00 (0.00, 0.01)	0.04 (0.04, 0.05)	9.18 (8.95, 9.43)	1.74 (1.63, 1.87)	
	10	0.00 (0.00, 0.00)	0.05 (0.04, 0.05)	0.44 (0.41, 0.47)	9.26 (9.02, 9.51)	1.76 (1.64, 1.89)	
	20	0.04 (0.04, 0.05)	0.44 (0.41, 0.47)	1.74 (1.68, 1.80)	9.27 (9.04, 9.52)	1.76 (1.64, 1.89)	
	30	0.40 (0.37, 0.42)	1.70 (1.64, 1.76)	3.62 (3.52, 3.71)	9.26 (9.02, 9.51)	1.76 (1.64, 1.89)	
	40	1.31 (1.27, 1.36)	3.24 (3.16, 3.33)	5.47 (5.34, 5.61)	8.93 (8.69, 9.18)	1.73 (1.62, 1.87)	
	50	1.97 (1.90, 2.04)	4.25 (4.12, 4.37)	6.27 (6.11, 6.44)	7.78 (7.55, 8.03)	1.61 (1.50, 1.75)	
	60	2.37 (2.28, 2.47)	4.49 (4.34, 4.64)	5.70 (5.51, 5.90)	6.07 (5.84, 6.31)	1.37 (1.25, 1.50)	
	70	2.30 (2.19, 2.41)	3.62 (3.45, 3.80)	- (- , -)	4.01 (3.80, 4.25)	1.08 (0.96, 1.22)	
80	1.61 (1.47, 1.75)	- (- , -)	- (- , -)	2.09 (1.88, 2.33)	0.81 (0.68, 0.97)		
American Indian/ Alaska Native ^a	0	0.00 (0.00, 0.04)	0.00 (0.00, 0.04)	0.03 (0.01, 0.09)	6.49 (5.81, 7.40)	1.94 (1.69, 2.26)	
	10	0.00 (0.00, 0.02)	0.03 (0.01, 0.07)	0.25 (0.18, 0.34)	6.58 (5.89, 7.50)	1.97 (1.71, 2.29)	
	20	0.03 (0.01, 0.07)	0.25 (0.18, 0.34)	1.08 (0.92, 1.25)	6.61 (5.92, 7.54)	1.98 (1.72, 2.30)	
	30	0.22 (0.16, 0.31)	1.05 (0.90, 1.23)	2.50 (2.23, 2.81)	6.64 (5.94, 7.58)	1.99 (1.73, 2.32)	
	40	0.85 (0.71, 1.00)	2.32 (2.05, 2.62)	3.97 (3.55, 4.44)	6.55 (5.84, 7.49)	1.98 (1.72, 2.32)	
	50	1.53 (1.31, 1.78)	3.24 (2.84, 3.69)	4.84 (4.27, 5.46)	5.91 (5.20, 6.88)	1.93 (1.66, 2.27)	
	60	1.83 (1.51, 2.20)	3.54 (3.01, 4.14)	4.54 (3.87, 5.31)	4.69 (3.99, 5.68)	1.74 (1.46, 2.10)	
	70	1.99 (1.55, 2.51)	3.15 (2.51, 3.92)	- (- , -)	3.33 (2.65, 4.37)	1.56 (1.25, 1.96)	
80	1.58 (1.05, 2.30)	- (- , -)	- (- , -)	1.82 (1.20, 2.99)	1.42 (1.06, 1.93)		
Hispanic ^b	0	0.00 (0.00, 0.00)	0.00 (0.00, 0.00)	0.05 (0.04, 0.05)	9.23 (9.01, 9.46)	2.08 (2.01, 2.16)	
	10	0.00 (0.00, 0.00)	0.05 (0.04, 0.05)	0.37 (0.35, 0.39)	9.32 (9.10, 9.55)	2.10 (2.03, 2.18)	
	20	0.04 (0.04, 0.05)	0.37 (0.35, 0.39)	1.45 (1.41, 1.49)	9.34 (9.12, 9.57)	2.11 (2.03, 2.19)	
	30	0.33 (0.31, 0.34)	1.41 (1.37, 1.45)	3.19 (3.11, 3.26)	9.33 (9.11, 9.57)	2.11 (2.04, 2.19)	
	40	1.09 (1.06, 1.13)	2.89 (2.82, 2.96)	5.10 (4.98, 5.21)	9.09 (8.86, 9.32)	2.08 (2.01, 2.16)	
	50	1.84 (1.78, 1.90)	4.10 (3.99, 4.21)	6.30 (6.14, 6.45)	8.19 (7.97, 8.43)	1.97 (1.89, 2.05)	
	60	2.38 (2.29, 2.47)	4.69 (4.55, 4.83)	6.07 (5.89, 6.26)	6.68 (6.46, 6.92)	1.73 (1.66, 1.81)	
	70	2.57 (2.46, 2.69)	4.11 (3.94, 4.28)	- (- , -)	4.79 (4.57, 5.03)	1.42 (1.34, 1.51)	
80	1.98 (1.84, 2.13)	- (- , -)	- (- , -)	2.85 (2.62, 3.11)	1.12 (1.03, 1.22)		

Devcan Version 6.2.0, April 2006, National Cancer Institute (<http://srab.cancer.gov/devcan/>).

Source: Incidence data are from the SEER 17 areas (San Francisco, Connecticut, Detroit, Hawaii, Iowa, New Mexico, Seattle, Utah, Atlanta, San Jose-Monterey, Los Angeles, Alaska Native Registry, Rural Georgia, California excluding SF/SJM/LA, Kentucky, Louisiana and New Jersey). Mortality data are from the NCHS public use data file for the total US.

^a Underlying incidence and mortality data for American Indian/Alaska Native are based on the CHSDA (Contract Health Service Delivery Area) counties.

^b Hispanic is not mutually exclusive from whites, blacks, Asian/Pacific Islanders, and American Indians/Alaska Natives. Underlying incidence data for Hispanics are based on NHIA and exclude cases from the Alaska Native Registry and Kentucky. Underlying mortality data for Hispanics exclude deaths from Minnesota, New Hampshire and North Dakota.

- Statistic could not be calculated.

A percent or confidence interval value of 0.00 represents a value that is below 0.005.

Table IV-15
FEMALE BREAST CANCER (Invasive)

SEER INCIDENCE AND U.S. MORTALITY
AGE-ADJUSTED RATES AND TRENDS^a
 By Race/Ethnicity

SEER Incidence

RACE/ETHNICITY	Rate 2000-2004 ^b	Trend 1995-2004 ^c
	Rate per 100,000 persons	APC (%)
	Females	Females
All Races	127.8	-1.0
White	132.5	-0.9
White Hispanic ^d	91.2	-0.8
White Non-Hispanic ^d	140.2	-0.8
Black	118.3	-0.5*
Asian/Pacific Islander	89.0	0.0
Amer Ind/Alaska Nat ^e	69.8	-1.9
Hispanic ^d	89.3	-0.7

U.S. Mortality^f

RACE/ETHNICITY	Rate 2000-2004	Trend 1995-2004
	Rate per 100,000 persons	APC (%)
	Females	Females
All Races	25.5	-2.3*
White	25.0	-2.4*
White Hispanic ^d	16.7	-2.3*
White Non-Hispanic ^d	25.5	-2.3*
Black	33.8	-1.6*
Asian/Pacific Islander	12.6	-0.3
Amer Ind/Alaska Nat		
Total U.S.	13.9	-1.2
CHSDA Counties	16.1	0.2
Non-CHSDA Counties	11.2	-3.2
Hispanic ^d	16.1	-2.4*

- The APC is the Annual Percent Change over the time interval.
- Statistic not shown. Rate based on less than 16 cases for the time interval. Trend based on less than 10 cases for at least one year within the time interval.
- a Rates are age-adjusted to the 2000 US Std Population (19 age groups - Census P25-1130). Trends are based on rates age-adjusted to the 2000 US Std Population (19 age groups - Census P25-1130).
- b Incidence data used in calculating the rates are from the 17 SEER areas (San Francisco, Connecticut, Detroit, Hawaii, Iowa, New Mexico, Seattle, Utah, Atlanta, San Jose-Monterey, Los Angeles, Alaska Native Registry, Rural Georgia, California excluding SF/SJM/LA, Kentucky, Louisiana and New Jersey).
- c Incidence data used in calculating the trends are from the 13 SEER areas (San Francisco, Connecticut, Detroit, Hawaii, Iowa, New Mexico, Seattle, Utah, Atlanta, San Jose-Monterey, Los Angeles, Alaska Native Registry and Rural Georgia).
- d Hispanic and Non-Hispanic are not mutually exclusive from whites, blacks, Asian/Pacific Islanders, and American Indians/Alaska Natives. Incidence data for Hispanics and Non-Hispanics are based on NHIA and exclude cases from the Alaska Native Registry and Kentucky. The 2000-2004 Hispanic and Non-Hispanic death rates exclude deaths from Minnesota, New Hampshire and North Dakota. The 1995-2004 Hispanic and Non-Hispanic mortality trends exclude deaths from Maine, Minnesota, New Hampshire, North Dakota, and Oklahoma.
- e Incidence data for American Indian/Alaska Native are based on the CHSDA(Contract Health Service Delivery Area) counties.
- f Mortality data are analyzed from a public use file provided by the National Center for Health Statistics (NCHS).
- * The APC is significantly different from zero (p<.05).

Table IV-16
FEMALE BREAST CANCER (In Situ)

SEER INCIDENCE
AGE-ADJUSTED RATES AND TRENDS^a
 By Race/Ethnicity

RACE/ETHNICITY	Rate 2000-2004 ^b	Trend 1995-2004 ^c
	Rate per 100,000 persons	APC (%)
	Females	Females
All Races	29.4	2.6*
White	30.2	2.5*
White Hispanic ^d	18.3	3.2*
White Non-Hispanic ^d	33.0	2.7*
Black	25.4	2.7*
Asian/Pacific Islander	25.3	4.5*
Amer Ind/Alaska Nat ^e	15.5	1.8
Hispanic ^d	17.9	3.1*

- The APC is the Annual Percent Change over the time interval.
- Statistic not shown. Rate based on less than 16 cases for the time interval. Trend based on less than 10 cases for at least one year within the time interval.
- ^a Rates are age-adjusted to the 2000 US Std Population (19 age groups - Census P25-1130). Trends are based on rates age-adjusted to the 2000 US Std Population (19 age groups - Census P25-1130).
- ^b Incidence data used in calculating the rates are from the 17 SEER areas (San Francisco, Connecticut, Detroit, Hawaii, Iowa, New Mexico, Seattle, Utah, Atlanta, San Jose-Monterey, Los Angeles, Alaska Native Registry, Rural Georgia, California excluding SF/SJM/LA, Kentucky, Louisiana and New Jersey).
- ^c Incidence data used in calculating the trends are from the 13 SEER areas (San Francisco, Connecticut, Detroit, Hawaii, Iowa, New Mexico, Seattle, Utah, Atlanta, San Jose-Monterey, Los Angeles, Alaska Native Registry and Rural Georgia).
- ^d Hispanic and Non-Hispanic are not mutually exclusive from whites, blacks, Asian/Pacific Islanders, and American Indians/Alaska Natives. Incidence data for Hispanics and Non-Hispanics are based on NHIA and exclude cases from the Alaska Native Registry and Kentucky.
- ^e Incidence data for American Indian/Alaska Native are based on the CHSDA(Contract Health Service Delivery Area) counties.
- * The APC is significantly different from zero (p<.05).

Table IV-17
 FEMALE BREAST CANCER (Invasive)
 AGE-ADJUSTED SEER INCIDENCE RATES^a
 By Registry, Race/Ethnicity and Age

	All Races			Whites			Blacks		
	All Ages	Ages <50	Ages 50+	All Ages	Ages <50	Ages 50+	All Ages	Ages <50	Ages 50+
<u>SEER INCIDENCE RATES^a, 2000-2004</u>									
REGISTRY									
Atlanta & Rural Georgia	128.9	43.1	353.6	137.0	43.8	381.2	116.9	43.2	309.7
Atlanta	130.1	43.2	357.7	138.2	43.8	385.6	118.2	43.4	314.2
Rural Georgia	110.8	42.9	288.7	115.7	45.4	299.8	103.4	40.5	268.1
California	126.5	40.0	353.0	133.1	40.5	375.8	118.4	41.1	320.7
Greater Bay Area	129.7	42.6	357.9	142.6	43.6	401.7	116.2	42.0	310.4
San Francisco-Oakland	132.3	43.3	365.3	146.6	44.5	413.8	119.1	42.6	319.3
San Jose-Monterey	124.8	41.4	343.3	135.5	42.0	380.6	93.2	38.5	236.2
Los Angeles	119.7	39.2	330.3	125.6	39.0	352.4	121.5	40.0	334.9
Greater California	128.7	39.5	362.3	133.4	40.2	377.5	115.2	41.8	307.3
Connecticut	137.4	48.2	371.1	140.0	49.0	378.2	112.9	41.8	299.3
Detroit	130.9	44.1	358.1	135.4	45.3	371.1	121.6	41.8	330.5
Hawaii	124.2	45.1	331.4	144.8	47.2	400.2	74.7	-	238.3
Iowa	125.9	40.9	348.3	125.7	40.9	347.9	109.3	35.1	303.6
Kentucky	122.1	41.6	333.0	121.0	40.7	331.3	129.8	46.7	347.5
Louisiana	122.0	40.9	334.3	121.6	37.3	342.3	123.7	49.2	319.0
New Jersey	131.7	46.8	354.0	136.5	48.5	367.2	112.2	41.1	298.5
New Mexico	112.2	36.8	309.7	118.3	39.0	326.0	68.5	23.9	185.4
Seattle-Puget Sound	145.8	43.8	412.7	151.9	44.3	433.8	113.7	44.1	295.8
Utah	115.7	34.7	328.0	117.5	35.0	333.3	82.9	-	-
9 SEER Areas ^b	131.0	43.0	361.5	136.5	43.5	379.8	117.8	42.0	316.3
11 SEER Areas ^b	128.0	42.0	353.5	134.1	42.4	374.2	118.5	41.5	320.3
13 SEER Areas ^b	128.0	42.0	353.3	134.0	42.4	374.0	118.3	41.5	319.4
17 SEER Areas ^b	127.8	41.9	353.0	132.5	42.2	369.1	118.3	42.9	315.8

^a Rates are per 100,000 and are age-adjusted to the 2000 US Std Population (19 age groups - Census P25-1130)

^b The SEER 9 areas are San Francisco, Connecticut, Detroit, Hawaii, Iowa, New Mexico, Seattle, Utah and Atlanta.
 The SEER 11 areas comprise the SEER 9 areas plus San Jose-Monterey and Los Angeles.

The SEER 13 areas comprise the SEER 11 areas plus the Alaska Native Registry and Rural Georgia.

The SEER 17 areas comprise the SEER 13 areas plus California excluding SF/SJM/LA, Kentucky, Louisiana and New Jersey

- Statistic not shown. Rate based on less than 16 cases for the time interval.

Table IV-18
 FEMALE BREAST CANCER (Invasive)

AGE-ADJUSTED SEER DEATH RATES^a
 By Registry, Race/Ethnicity and Age

	All Races			Whites			Blacks		
	All Ages	Ages <50	Ages 50+	All Ages	Ages <50	Ages 50+	All Ages	Ages <50	Ages 50+
<u>SEER DEATH RATES^a, 2000-2004</u>									
REGISTRY									
Atlanta & Rural Georgia	26.4	5.8	80.2	24.3	4.1	77.3	32.3	8.7	94.0
Atlanta	26.6	5.8	81.3	24.5	4.1	78.1	32.9	8.7	96.5
Rural Georgia	22.7	-	64.7	19.3	-	62.4	26.1	-	66.2
California	24.2	5.4	73.2	25.0	5.2	76.8	33.7	10.4	94.8
Greater Bay Area	23.6	5.1	72.0	25.5	4.7	80.0	33.2	10.9	91.6
San Francisco-Oakland	24.8	5.4	75.4	26.8	4.8	84.4	33.8	11.1	93.2
San Jose-Monterey	21.3	4.6	65.2	23.2	4.5	72.1	28.5	-	77.8
Los Angeles	23.5	5.5	70.6	23.8	5.0	73.0	34.1	10.7	95.2
Greater California	24.7	5.5	74.9	25.3	5.5	77.3	33.8	9.8	96.6
Connecticut	25.2	5.1	77.9	25.2	4.9	78.2	26.9	6.9	79.2
Detroit	28.1	6.2	85.3	26.0	5.1	80.6	35.8	9.6	104.3
Hawaii	17.3	4.5	50.8	22.9	4.9	70.1	-	-	-
Iowa	23.6	4.6	73.2	23.4	4.6	72.8	37.2	-	111.0
Kentucky	26.2	5.6	79.9	25.5	5.3	78.5	36.6	9.6	107.5
Louisiana	29.8	7.5	88.3	25.7	5.3	79.4	40.3	12.3	113.7
New Jersey	28.5	5.3	89.1	28.3	4.9	89.6	34.6	8.9	102.0
New Mexico	22.6	5.7	66.7	23.4	6.0	68.9	24.8	-	86.3
Seattle-Puget Sound	23.7	4.4	74.4	24.4	4.2	77.1	29.9	9.5	83.2
Utah	23.0	4.5	71.5	23.2	4.5	72.2	-	-	-
9 SEER Areas ^b	24.6	5.2	75.4	24.7	4.7	77.1	33.1	9.0	96.3
11 SEER Areas ^b	24.2	5.2	73.8	24.5	4.8	76.0	33.2	9.4	95.7
13 SEER Areas ^b	24.2	5.2	73.7	24.4	4.8	75.9	33.1	9.4	95.2
17 SEER Areas ^b	25.3	5.5	77.2	25.3	5.0	78.5	34.9	9.8	100.4
Total U.S.	25.5	5.6	77.7	25.0	5.1	77.0	33.8	9.8	96.9

^a NCHS public use data file for the total US. Rates are per 100,000 and are age-adjusted to the 2000 US Std Population (19 age groups - Census P25-1130).

^b The SEER 9 areas are San Francisco, Connecticut, Detroit, Hawaii, Iowa, New Mexico, Seattle, Utah and Atlanta.

The SEER 11 areas comprise the SEER 9 areas plus San Jose-Monterey and Los Angeles.

The SEER 13 areas comprise the SEER 11 areas plus the Alaska Native Registry and Rural Georgia.

The SEER 17 areas comprise the SEER 13 areas plus California excluding SF/SJM/LA, Kentucky, Louisiana and New Jersey

- Statistic not shown. Rate based on less than 16 cases for the time interval.

Table IV-19
 FEMALE BREAST CANCER (*In Situ*)

AGE-ADJUSTED SEER INCIDENCE RATES^a
 By Registry, Race/Ethnicity and Age

	All Races			Whites			Blacks		
	All Ages	Ages <50	Ages 50+	All Ages	Ages <50	Ages 50+	All Ages	Ages <50	Ages 50+
<u>SEER INCIDENCE RATES^a, 2000-2004</u>									
REGISTRY									
Atlanta & Rural Georgia	32.6	11.1	89.0	36.3	12.9	97.7	27.0	8.6	75.1
Atlanta	33.0	11.2	90.1	36.6	12.8	99.0	27.4	8.9	76.0
Rural Georgia	26.7	9.7	71.2	32.1	16.0	74.1	19.5	-	63.0
California	26.9	9.2	73.5	27.6	9.2	75.6	23.3	7.0	66.1
Greater Bay Area	30.1	10.9	80.2	31.0	10.7	84.2	22.7	6.7	64.4
San Francisco-Oakland	31.0	11.4	82.4	32.2	11.5	86.4	23.1	6.8	65.9
San Jose-Monterey	28.2	10.1	75.7	28.8	9.3	80.1	18.7	-	50.6
Los Angeles	24.8	8.7	66.8	25.6	8.9	69.4	24.0	7.5	67.1
Greater California	26.9	8.8	74.2	27.4	9.0	75.6	23.1	6.6	66.3
Connecticut	42.5	17.3	108.7	43.5	18.0	110.1	31.6	9.8	88.4
Detroit	38.1	14.3	100.4	39.7	15.8	102.3	34.4	10.2	97.7
Hawaii	35.2	12.6	94.6	32.8	10.5	91.1	-	-	-
Iowa	25.8	9.3	69.1	25.7	9.2	69.0	24.2	-	69.7
Kentucky	23.4	8.4	62.7	23.2	8.5	61.7	23.6	5.8	70.3
Louisiana	22.0	7.6	59.5	23.0	8.1	61.9	19.9	6.6	54.6
New Jersey	35.2	15.1	87.9	37.2	16.3	91.9	25.1	8.8	67.7
New Mexico	20.8	6.7	57.7	22.4	7.5	61.3	-	-	-
Seattle-Puget Sound	35.2	11.4	97.5	35.9	11.8	99.2	32.4	6.5	100.5
Utah	23.7	7.5	66.3	24.0	7.4	67.4	-	-	-
9 SEER Areas ^b	32.9	11.9	88.0	33.7	12.3	89.6	29.7	8.9	84.3
11 SEER Areas ^b	30.8	11.0	82.5	31.7	11.4	84.8	28.0	8.5	79.1
13 SEER Areas ^b	30.8	11.0	82.5	31.7	11.4	84.8	27.9	8.5	78.9
17 SEER Areas ^b	29.4	10.6	78.6	30.2	11.0	80.5	25.4	7.9	71.2

^a Rates are per 100,000 and are age-adjusted to the 2000 US Std Population (19 age groups - Census P25-1130)

^b The SEER 9 areas are San Francisco, Connecticut, Detroit, Hawaii, Iowa, New Mexico, Seattle, Utah and Atlanta.

The SEER 11 areas comprise the SEER 9 areas plus San Jose-Monterey and Los Angeles.

The SEER 13 areas comprise the SEER 11 areas plus the Alaska Native Registry and Rural Georgia.

The SEER 17 areas comprise the SEER 13 areas plus California excluding SF/SJM/LA, Kentucky, Louisiana and New Jersey

- Statistic not shown. Rate based on less than 16 cases for the time interval.

Table IV-20
FEMALE BREAST CANCER (Invasive)AVERAGE ANNUAL AGE-ADJUSTED CANCER DEATH^a RATES BY STATE, ALL RACES, 2000-2004

Females

State	Rate	SE	Rank	PD	State	Rate	SE	Rank	PD
TOTAL U.S.	25.5	0.06							
High Five States									
District of Columbia	32.1 ^b	1.42	(01)	25.9 ^c					
Louisiana	29.8 ^b	0.50	(02)	16.9 ^c					
New Jersey	28.5 ^b	0.33	(03)	11.8 ^c					
Ohio	28.0 ^b	0.29	(04)	9.8					
Mississippi	27.8 ^b	0.60	(05)	9.0					
Low Five States									
Utah	23.0 ^b	0.71	(47)	-9.8					
Colorado	23.0 ^b	0.47	(48)	-9.8					
New Mexico	22.6 ^b	0.68	(49)	-11.4 ^c					
Alaska	22.4	1.51	(50)	-12.2 ^c					
Hawaii	17.3 ^b	0.70	(51)	-32.2 ^c					
Alabama	26.0	0.45	(17)	2.0	Montana	24.0	0.94	(35)	-5.9
Alaska	22.4	1.51	(50)	-12.2 ^c	Nebraska	23.6	0.69	(42)	-7.5
Arizona	23.4 ^b	0.40	(45)	-8.2	Nevada	26.2	0.71	(16)	2.7
Arkansas	24.4	0.55	(32)	-4.3	New Hampshire	24.8	0.83	(29)	-2.7
California	24.2 ^b	0.17	(33)	-5.1	New Jersey	28.5 ^b	0.33	(03)	11.8 ^c
Colorado	23.0 ^b	0.47	(48)	-9.8	New Mexico	22.6 ^b	0.68	(49)	-11.4 ^c
Connecticut	25.2	0.49	(27)	-1.2	New York	26.2	0.22	(13)	2.7
Delaware	26.6	1.07	(11)	4.3	North Carolina	25.4	0.33	(24)	-0.4
District of Columbia	32.1 ^b	1.42	(01)	25.9 ^c	North Dakota	24.0	1.12	(36)	-5.9
Florida	23.5 ^b	0.21	(44)	-7.8	Ohio	28.0 ^b	0.29	(04)	9.8
Georgia	25.5	0.35	(23)	0.0	Oklahoma	25.6	0.51	(21)	0.4
Hawaii	17.3 ^b	0.70	(51)	-32.2 ^c	Oregon	25.2	0.50	(26)	-1.2
Idaho	23.7	0.84	(40)	-7.1	Pennsylvania	27.5 ^b	0.26	(07)	7.8
Illinois	27.0 ^b	0.28	(09)	5.9	Rhode Island	24.0	0.86	(34)	-5.9
Indiana	26.2	0.39	(14)	2.7	South Carolina	25.9	0.47	(18)	1.6
Iowa	23.6 ^b	0.51	(43)	-7.5	South Dakota	23.7	1.04	(39)	-7.1
Kansas	25.2	0.57	(28)	-1.2	Tennessee	26.3	0.40	(12)	3.1
Kentucky	26.2	0.47	(15)	2.7	Texas	24.5 ^b	0.22	(30)	-3.9
Louisiana	29.8 ^b	0.50	(02)	16.9 ^c	Utah	23.0 ^b	0.71	(47)	-9.8
Maine	23.7	0.76	(41)	-7.1	Vermont	25.8	1.18	(19)	1.2
Maryland	27.6 ^b	0.43	(06)	8.2	Virginia	27.2 ^b	0.37	(08)	6.7
Massachusetts	25.6	0.36	(22)	0.4	Washington	23.8 ^b	0.39	(38)	-6.7
Michigan	25.8	0.30	(20)	1.2	West Virginia	25.4	0.66	(25)	-0.4
Minnesota	23.9 ^b	0.42	(37)	-6.3	Wisconsin	24.5	0.40	(31)	-3.9
Mississippi	27.8 ^b	0.60	(05)	9.0	Wyoming	23.2	1.32	(46)	-9.0
Missouri	26.6	0.40	(10)	4.3					

^a NCHS public use data file. Rates are per 100,000 and are age-adjusted to the 2000 US Std Population (19 age groups - Census P25-1130).

^b Difference between state rate and total U.S. rate is statistically significant ($p < .0002$).

^c Absolute percent difference between state rate and total U.S. rate is 10% or more.

SE Standard error of the rate.

PD Percent difference between state rate and total U.S. rate.

Table IV-21
BREAST CANCER (Invasive)

Estimated United States Cancer Prevalence Counts^a on January 1, 2004
By Race/Ethnicity, Sex and Years Since Diagnosis

Years Since Diagnosis	0 to <5	5 to <10	10 to <15	15 to <20	20 to <25	0 to <14 ^e	0 to <29 ^e	>=29 ^g	Complete ^h
<u>Race/Sex</u>									
All Races ^b	819,033	604,268	407,714	261,657	138,936	1,763,214	2,311,009	109,204	2,420,213
Males	5,334	2,860	1,694	1,016	758	9,673	11,962	308	12,270
Females	813,699	601,408	406,020	260,641	138,178	1,753,541	2,299,047	108,896	2,407,943
White ^b	716,788	538,074	367,895	239,127	126,620	1,561,045	2,061,456	97,253	2,158,709
Males	4,528	2,533	1,463	904	724	8,338	10,440	181 ⁱ	10,621
Females	712,260	535,541	366,432	238,223	125,896	1,552,707	2,051,016	97,072	2,148,088
Black ^b	70,732	45,895	28,262	16,372	9,016	140,495	174,874	+	+
Males	664	217	197	96	30	1,053	1,217	+	+
Females	70,068	45,678	28,065	16,276	8,986	139,442	173,657	7,527	181,184
Asian/Pacific Islander ^c	22,676	14,429	+	+	+	44,218	+	+	+
Males	77	55	+	+	+	163	+	+	+
Females	22,599	14,374	+	+	+	44,055	+	+	+
Hispanic ^d	40,609	25,430	+	+	+	79,851	+	+	+
Males	157	76	+	+	+	266	+	+	+
Females	40,452	25,354	+	+	+	79,585	+	+	+

Estimated prevalence percent^a on January 1, 2004, of the SEER 11 population diagnosed in the previous 10 years
By Age at Prevalence, Race/Ethnicity and Sex

Age at Prevalence	Age Specific (Crude)										Age-Adjusted ^f
	All Ages	0-9	10-19	20-29	30-39	40-49	50-59	60-69	70-79	80+	All Ages
<u>Race/Sex</u>											
All Races ^c	0.4389%	-	0.0002%	0.0051%	0.0761%	0.3795%	0.9238%	1.4648%	1.8751%	1.9770%	0.4564%
Males	0.0050%	-	-	-	0.0005%	0.0024%	0.0082%	0.0205%	0.0314%	0.0398%	0.0061%
Females	0.8634%	-	0.0004%	0.0103%	0.1542%	0.7536%	1.7918%	2.7579%	3.2667%	3.0382%	0.8342%
White ^c	0.4810%	-	0.0002%	0.0050%	0.0750%	0.3852%	0.9594%	1.5602%	2.0095%	2.1014%	0.4797%
Males	0.0054%	-	-	-	0.0005%	0.0023%	0.0082%	0.0206%	0.0334%	0.0413%	0.0062%
Females	0.9550%	-	0.0003%	0.0103%	0.1552%	0.7777%	1.8884%	2.9745%	3.5326%	3.2150%	0.8856%
Black ^c	0.3044%	-	-	0.0064%	0.0894%	0.3602%	0.8268%	1.2201%	1.5701%	1.6334%	0.3988%
Males	0.0052%	-	-	-	-	0.0040%	0.0131%	0.0369%	0.0298%	0.0426%	0.0081%
Females	0.5752%	-	-	0.0123%	0.1677%	0.6722%	1.5005%	2.1463%	2.5797%	2.4005%	0.6876%
Asian/Pacific Islander ^c	0.3141%	-	-	0.0046%	0.0703%	0.3597%	0.7675%	1.0208%	1.1634%	1.0529%	0.3303%
Males	0.0025%	-	-	-	-	-	0.0042%	0.0080%	0.0169%	0.0242%	0.0031%
Females	0.6056%	-	-	0.0091%	0.1366%	0.6852%	1.4356%	1.8696%	1.9860%	1.7371%	0.5982%
Hispanic ^d	0.1640%	-	-	0.0043%	0.0490%	0.2696%	0.6173%	0.9534%	1.1581%	1.1752%	0.2969%
Males	0.0011%	-	-	-	-	0.0011%	0.0040%	0.0096%	0.0089%	0.0144%	0.0024%
Females	0.3357%	-	-	0.0093%	0.1051%	0.5485%	1.1887%	1.7384%	1.9791%	1.8386%	0.5409%

^a US 2004 cancer prevalence counts are based on 2004 cancer prevalence proportions from the SEER registries and 1/1/2004 US population estimates based on the average of 2003 and 2004 population estimates from the US Bureau of the Census. Prevalence was calculated using the First Malignant Primary Only for a person.

^{b c d} Statistics based on (b) SEER 9 Areas (c) SEER 11 Areas and Rural Georgia (d) NHIA for Hispanic for SEER 11 Areas and Rural Georgia.

^e Maximum limited-duration prevalence: 29 years for 1975-2004 SEER 9 data; 14 years for 1990-2004 SEER 11 data (used to calculate prevalence for Hispanics and Asian Pacific Islanders).

^f Percentages are age-adjusted to the 2000 US Standard Population (19 age groups - Census P25-1130) by 5-year age groups.

^{g h i} (g) Cases diagnosed more than 29 years ago were estimated using the completeness index method (Capocaccia et. al. 1997, Merrill et. al. 2000). (h) Complete prevalence is obtained by summing 0 to <29 and >=29. (i) Age-specific completeness index was approximated using empirical data from historical Connecticut tumor registry.

- Statistic not shown. Statistic based on fewer than 5 cases estimated alive in SEER for the time interval.

+ Not available.

Table IV-22

FEMALE BREAST CANCER(Invasive)

Percent Distribution and Counts by Histology among Histologically Confirmed Cases, 2001-2004
Females by Race

Histology	<u>All Races</u>		<u>White</u>		<u>Black</u>	
	Count	Percent	Count	Percent	Count	Percent
Adenocarcinoma	190,485	96.9%	159,874	97.1%	16,582	95.4%
Adenocarcinoma, NOS (8140)	2,125	1.1%	1,708	1.0%	278	1.6%
Infiltrating duct carcinoma (8500)	132,336	67.3%	109,644	66.6%	12,206	70.2%
Infiltrating lobular carcinoma, NOS (8520)	15,734	8.0%	14,099	8.6%	970	5.6%
Inflammatory adenocarcinoma (8230)	131	0.1%	117	0.1%	-	-
Infiltrating duct and lobular carcinoma (8522-8524)	24,891	12.7%	21,683	13.2%	1,656	9.5%
Mucinous and mucin-producing adenocarcinoma (8480,8481)	5,094	2.6%	4,203	2.6%	411	2.4%
Tubular adenocarcinoma (8211)	3,154	1.6%	2,867	1.7%	119	0.7%
Papillary adenocarcinoma (8260, 8503, 8504)	732	0.4%	536	0.3%	110	0.6%
Paget disease (8540-8543)	1,084	0.6%	899	0.5%	101	0.6%
Medullary adenocarcinoma (8510-8513)	1,382	0.7%	973	0.6%	310	1.8%
Other adenocarcinomas ^a	3,822	1.9%	3,145	1.9%	409	2.4%
Sarcoma	655	0.3%	500	0.3%	69	0.4%
Cystosarcoma phyllodes (9020)	470	0.2%	345	0.2%	53	0.3%
Hemangiosarcomas (9120-9126, 9170)	115	0.1%	99	0.1%	-	-
Other sarcomas (8890, 8935, 8980)	70	0.0%	56	0.0%	-	-
Other malignant histologies	5,395	2.7%	4,273	2.6%	734	4.2%
Total	196,535	100.0%	164,647	100.0%	17,385	100.0%

Source: SEER 17 areas (San Francisco, Connecticut, Detroit, Hawaii, Iowa, New Mexico, Seattle, Utah, Atlanta, San Jose-Monterey, Los Angeles, Alaska Native Registry, Rural Georgia, California excluding SF/SJM/LA, Kentucky, Louisiana and New Jersey). Percents may not sum to 100 due to rounding.

- Statistic not shown due to fewer than 16 cases during the time period.

^a Includes histologies 8141-8210, 8212-8229, 8231-8259, 8261-8389, 8401, 8408, 8410, 8411, 8413, 8441, 8450, 8460, 8470 8482, 8490, 8525, 8530, 8571-8574, 8576, 8650, 9070, 9110.

Table IV-23

FEMALE BREAST CANCER(In Situ)

Percent Distribution and Counts by Histology among Histologically Confirmed Cases, 2001-2004
Females by Race

Histology	<u>All Races</u>		<u>White</u>		<u>Black</u>	
	Count	Percent	Count	Percent	Count	Percent
Adenocarcinoma	36,820	79.8%	30,533	80.4%	3,000	77.9%
Adenocarcinoma <i>in situ</i> , NOS (8140/2)	16	0.0%	16	0.0%	-	-
Cribiform carcinoma <i>in situ</i> (8201/2)	3,674	8.0%	2,983	7.9%	269	7.0%
Ductal carcinoma <i>in situ</i> (8230/2, 8500/2)	18,368	39.8%	15,049	39.6%	1,592	41.4%
Lobular carcinoma <i>in situ</i> , NOS (8520/2)	5,244	11.4%	4,616	12.2%	312	8.1%
Comedocarcinoma <i>in situ</i> (8501/2)	4,518	9.8%	3,789	10.0%	341	8.9%
Intraductal and lobular carcinoma <i>in situ</i> (8522/2)	1,867	4.0%	1,591	4.2%	144	3.7%
Intraductal micropapillary (8507/2)	1,613	3.5%	1,311	3.5%	167	4.3%
Other adenocarcinomas ^a	1,520	3.3%	1,178	3.1%	175	4.5%
Other <i>in situ</i> histologies	9,305	20.2%	7,458	19.6%	849	22.1%
Total	46,125	100.0%	37,991	100.0%	3,849	100.0%

Source: SEER 17 areas (San Francisco, Connecticut, Detroit, Hawaii, Iowa, New Mexico, Seattle, Utah, Atlanta, San Jose-Monterey, Los Angeles, Alaska Native Registry, Rural Georgia, California excluding SF/SJM/LA, Kentucky, Louisiana and New Jersey). Percents may not sum to 100 due to rounding.

- Statistic not shown due to fewer than 16 cases during the time period.

^a Includes histologies 8141-8200, 8202-8229, 8231-8389, 8401, 8408, 8410, 8411, 8413, 8441, 8450, 8460, 8470 8480-8482, 8490, 8503, 8504, 8510, 8525, 8530, 8560, 8571-8574, 8576, 9070, 9110.

SEER Incidence, Delay Adjusted Incidence and US Death Rates^a Female Breast Cancer, by Race

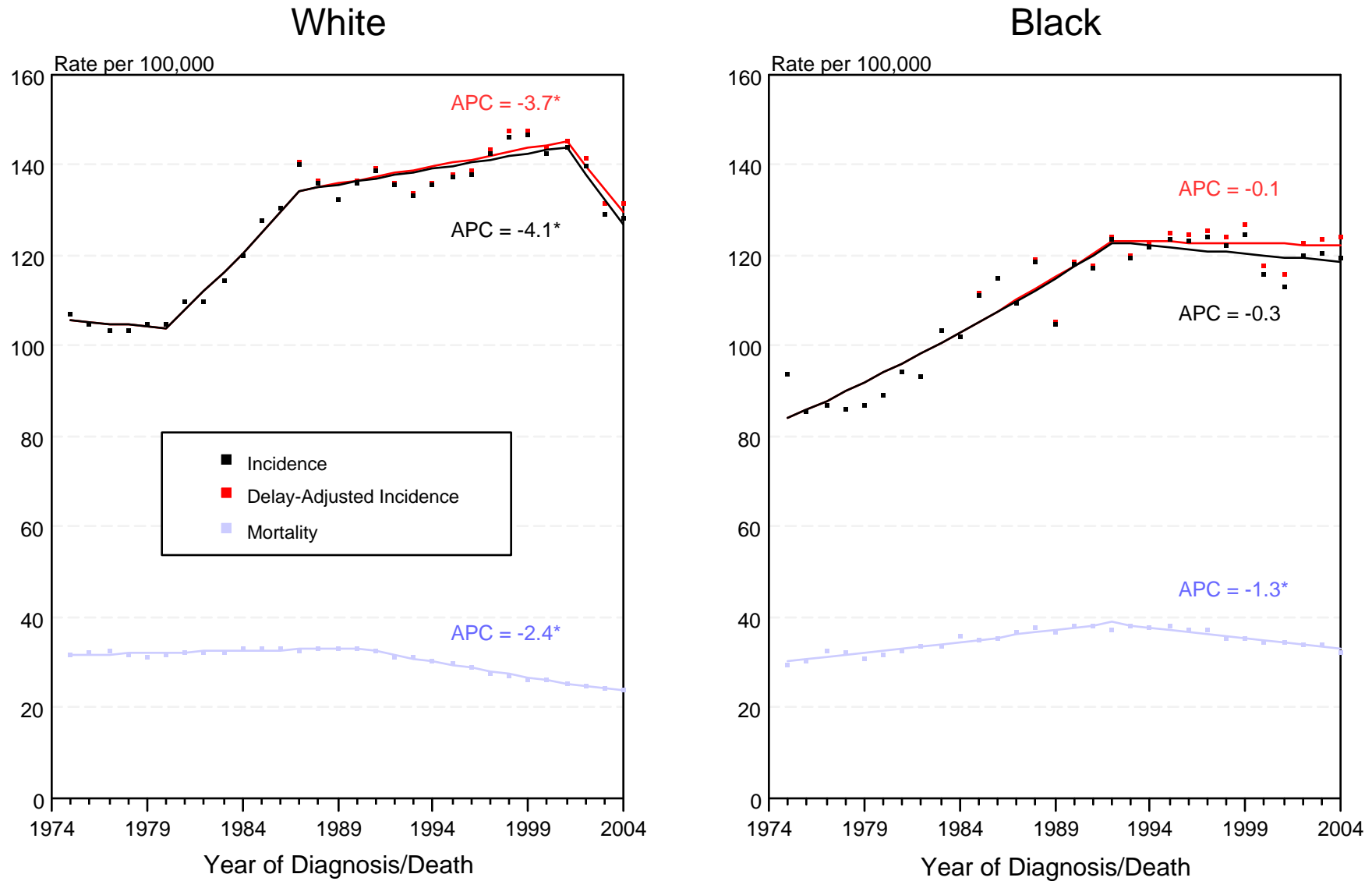


Figure IV-1

^a Source: SEER 9 areas and NCHS public use data file for the total US. Rates are age-adjusted to the 2000 US Std Population (19 age groups - Census P25-1103). Regression lines and APCs are calculated using the Joinpoint Regression Program Version 3.0, April 2005, National Cancer Institute.

The APC is the Annual Percent Change for the regression line segments. The APC shown on the graph is for the most recent trend.

* The APC is significantly different from zero ($p < 0.05$).

SEER Incidence, Delay Adjusted Incidence and US Death Rates^a Female Breast Cancer, by Age and Race

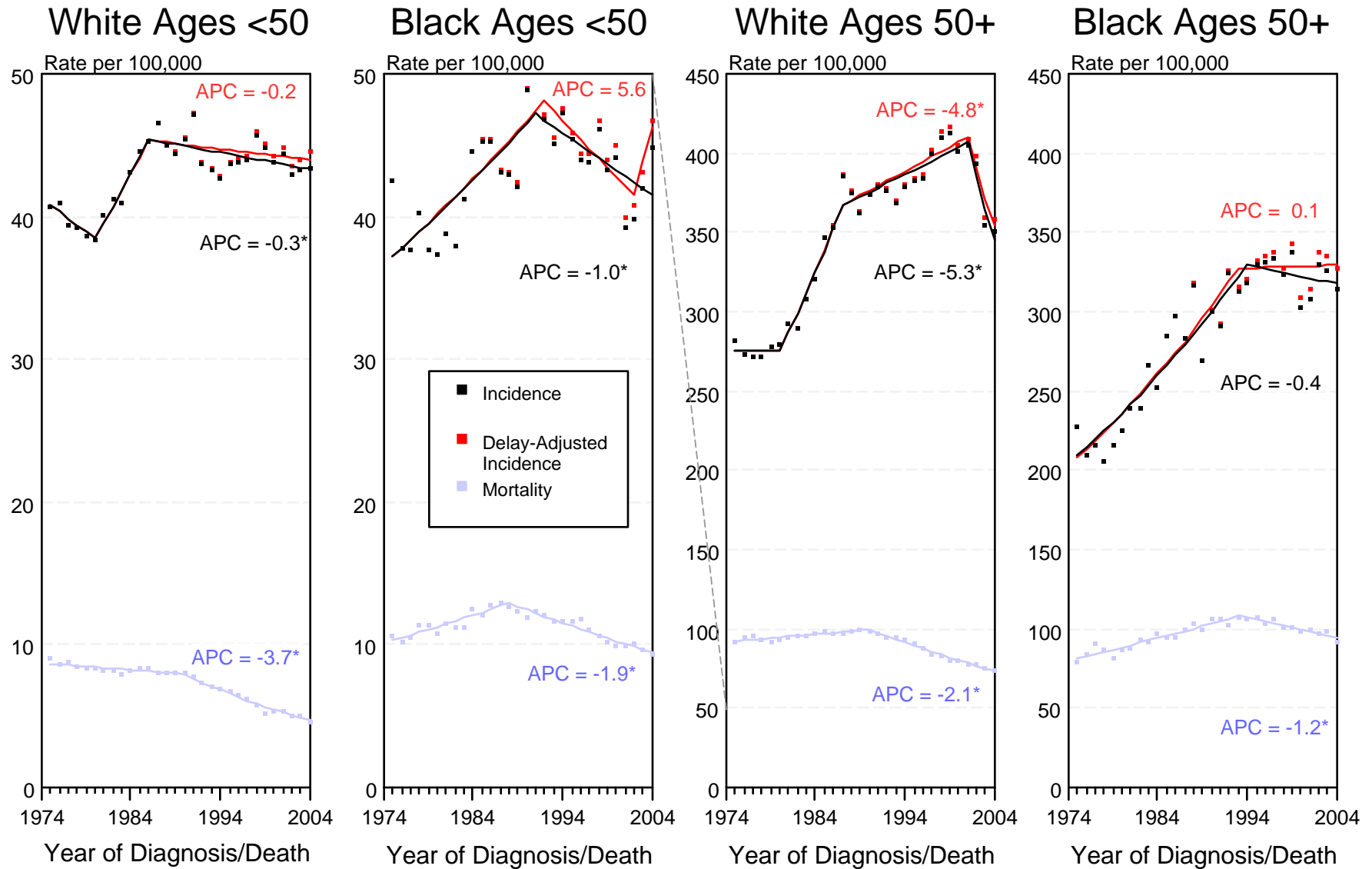


Figure IV-2

^a Source: SEER 9 areas and NCHS public use data file for the total US. Rates are age-adjusted to the 2000 US Std Population (19 age groups - Census P25-1103). Regression lines and APCs are calculated using the Joinpoint Regression Program Version 3.0, April 2005, National Cancer Institute.

The APC is the Annual Percent Change for the regression line segments. The APC shown on the graph is for the most recent trend.

* The APC is significantly different from zero ($p < 0.05$).

SEER Incidence and Delay Adjusted Incidence Rates^a Female Breast Cancer (*In Situ*), by Race

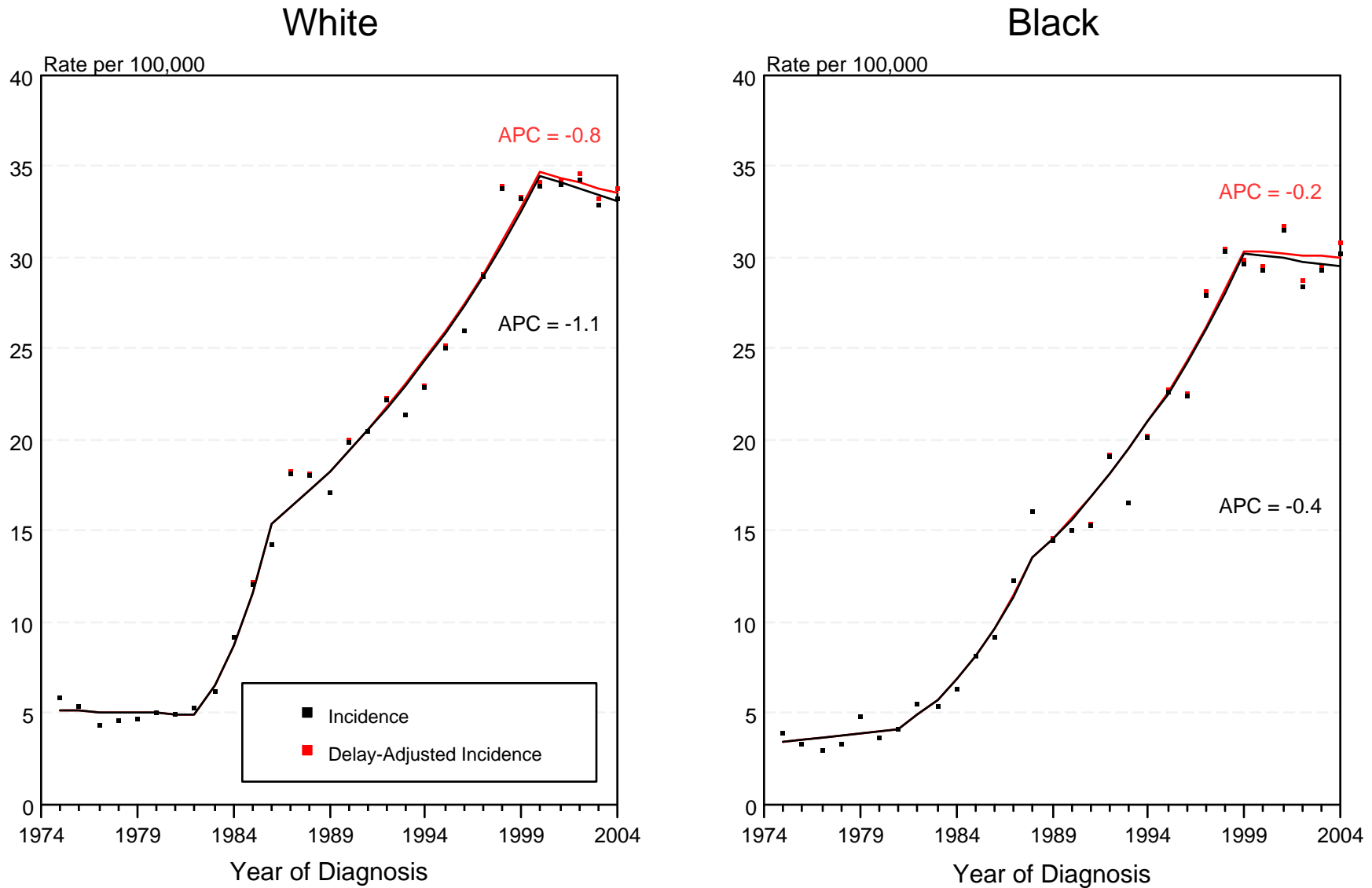


Figure IV-3

- ^a Source: SEER 9 areas. Rates are age-adjusted to the 2000 US Std Population (19 age groups - Census P25-1103). Regression lines and APCs are calculated using the Joinpoint Regression Program Version 3.0, April 2005, National Cancer Institute. The APC is the Annual Percent Change for the regression line segments. The APC shown on the graph is for the most recent trend.
- * The APC is significantly different from zero ($p < 0.05$).

SEER Incidence and US Death Rates^a Female Breast Cancer

Joinpoint Analyses for Whites and Blacks from 1975-2004
and for Asian/Pacific Islanders, American Indians/Alaska Natives and Hispanics from 1992-2004

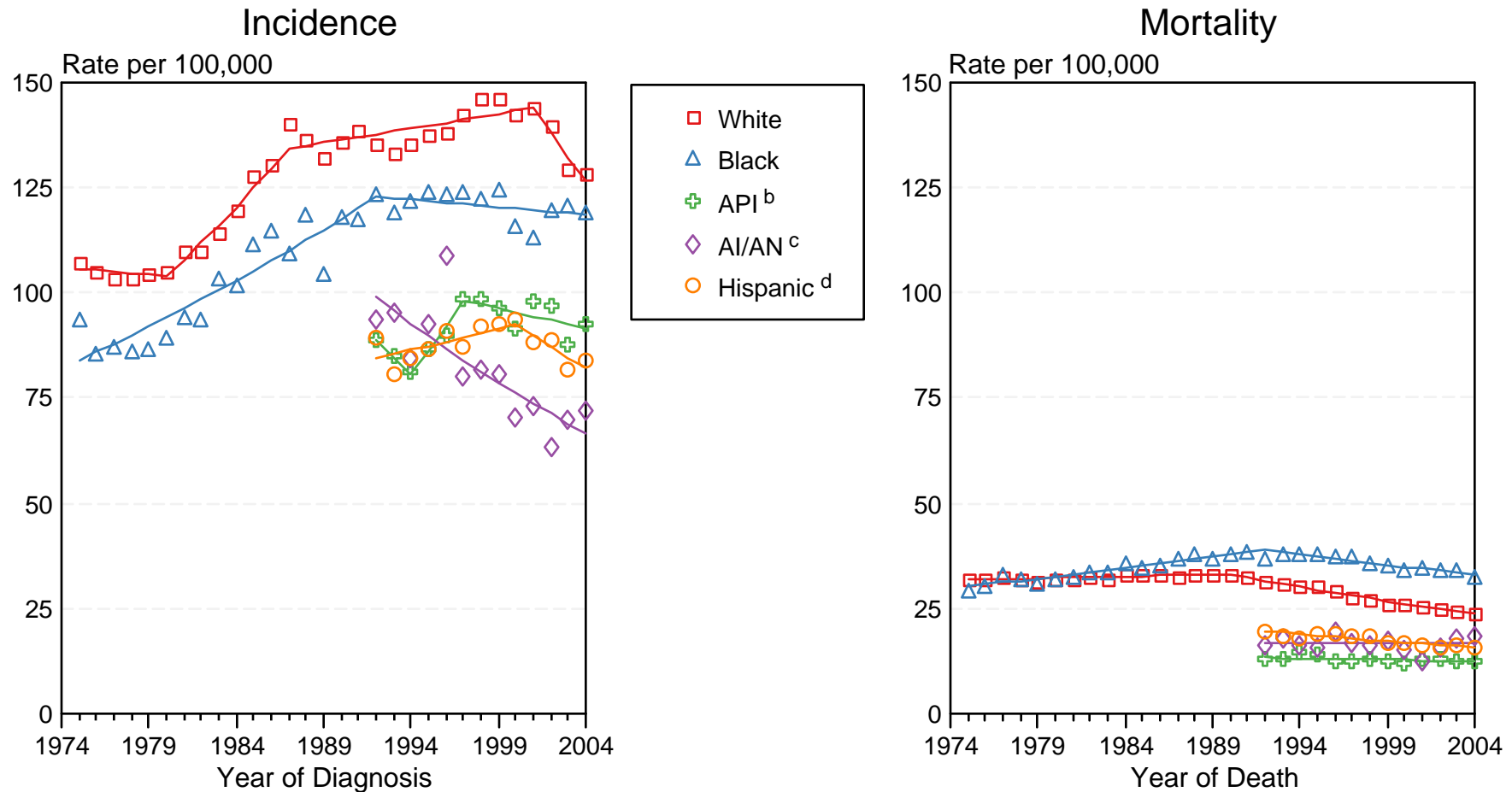


Figure IV-4

Source: Incidence data for whites and blacks are from the SEER 9 areas (San Francisco, Connecticut, Detroit, Hawaii, Iowa, New Mexico, Seattle, Utah, Atlanta). Incidence data for Asian/Pacific Islanders, American Indians/Alaska Natives and Hispanics are from the SEER 13 Areas (SEER 9 Areas, San Jose-Monterey, Los Angeles, Alaska Native Registry and Rural Georgia). Mortality data are from NCHS public use data file for the total US.

^a Rates are age-adjusted to the 2000 US Std Population (19 age groups - Census P25-1103).

Regression lines are calculated using the Joinpoint Regression Program Version 3.0, April 2005, National Cancer Institute.

^b API = Asian/Pacific Islander.

^c AI/AN = American Indian/Alaska Native. Rates for American Indian/Alaska Native are based on the CHSDA(Contract Health Service Delivery Area) counties.

^d Hispanic is not mutually exclusive from whites, blacks, Asian/Pacific Islanders, and American Indians/Alaska Natives. Incidence data for Hispanics are based on NHIA and exclude cases from the Alaska Native Registry. Mortality data for Hispanics exclude cases from Connecticut, Maine, Maryland, Minnesota, New Hampshire, New York, North Dakota, Oklahoma, and Vermont.

Breast Cancer Incidence Rates, 1975-2004 by Age, *In Situ* vs Malignant All Races, Female

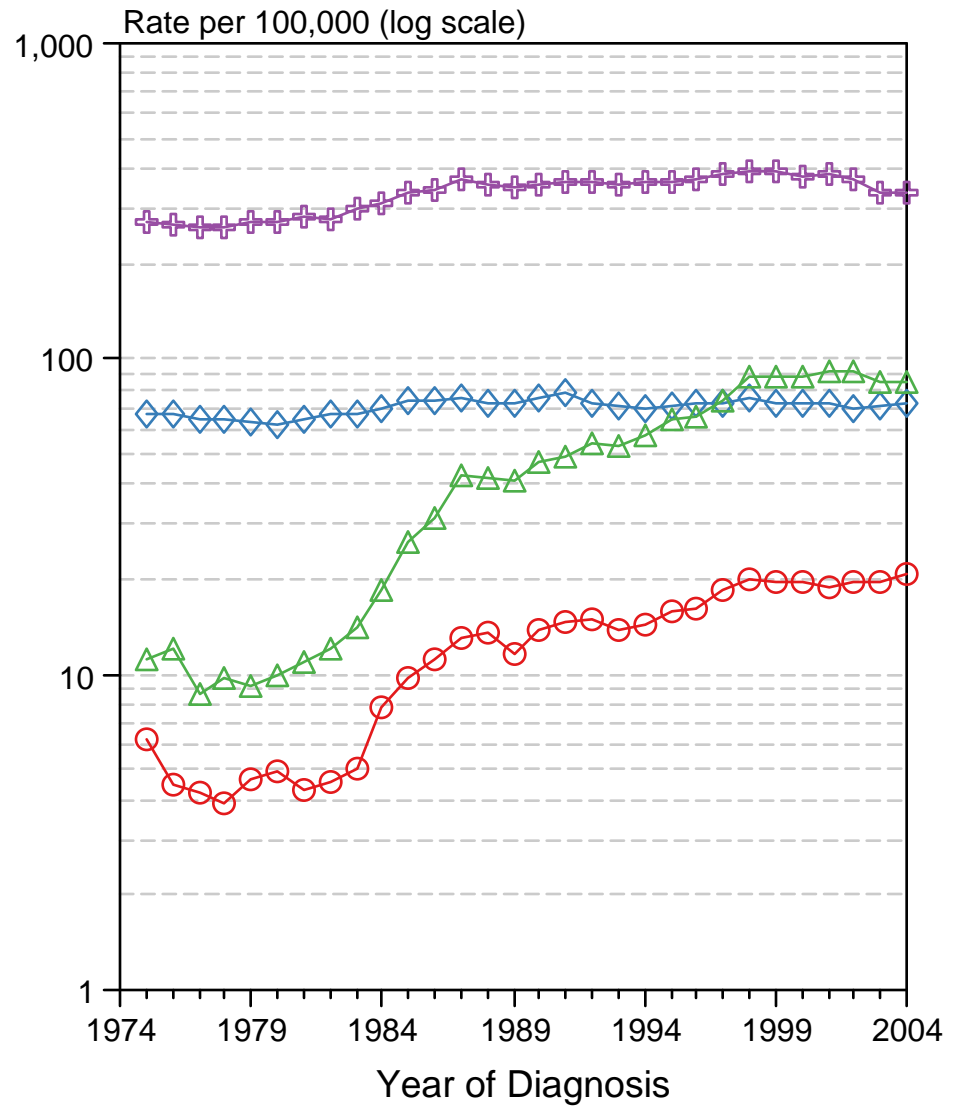
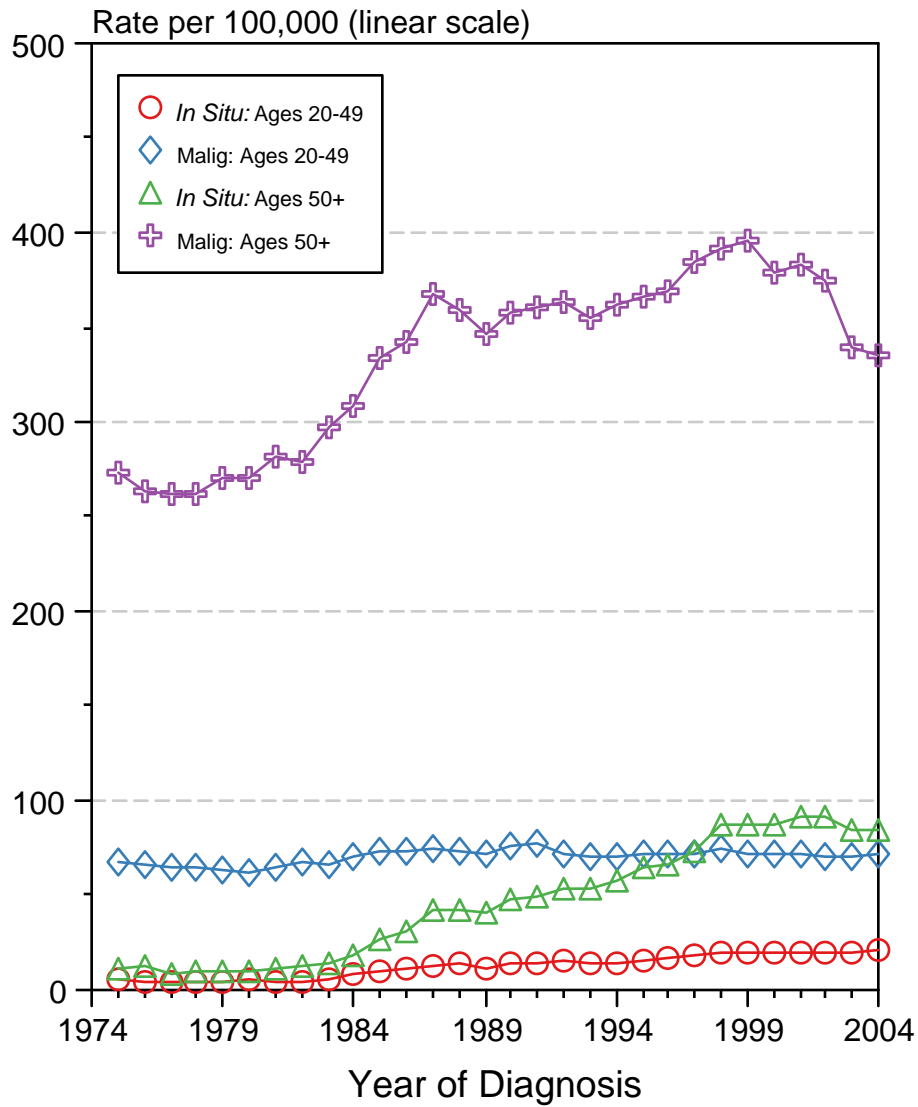


Figure IV-5

Source: SEER 9 areas. Rates are age-adjusted to the 2000 US Std Population (19 age groups - Census P25-1103).

Breast Cancer Incidence Rates, 1975-2004 by Age, *In Situ* vs Malignant White Female

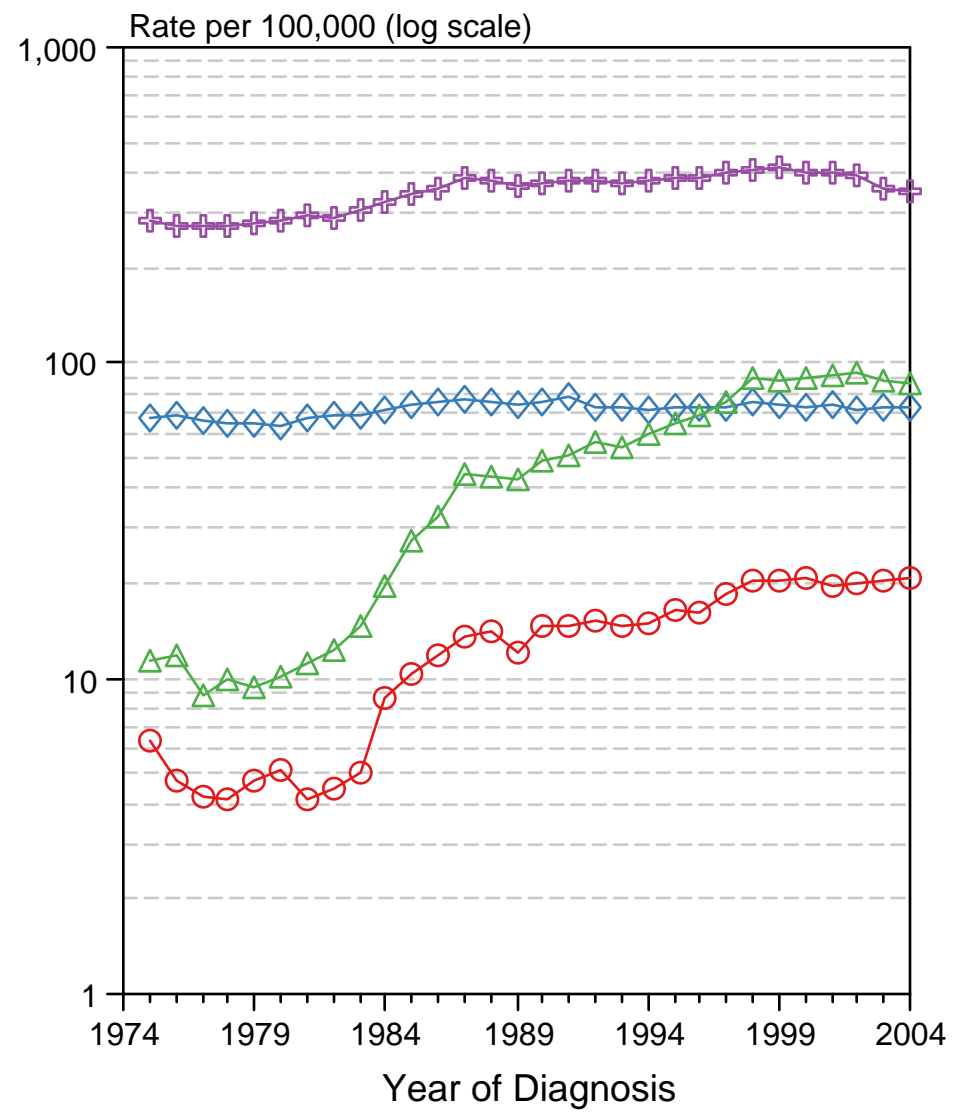
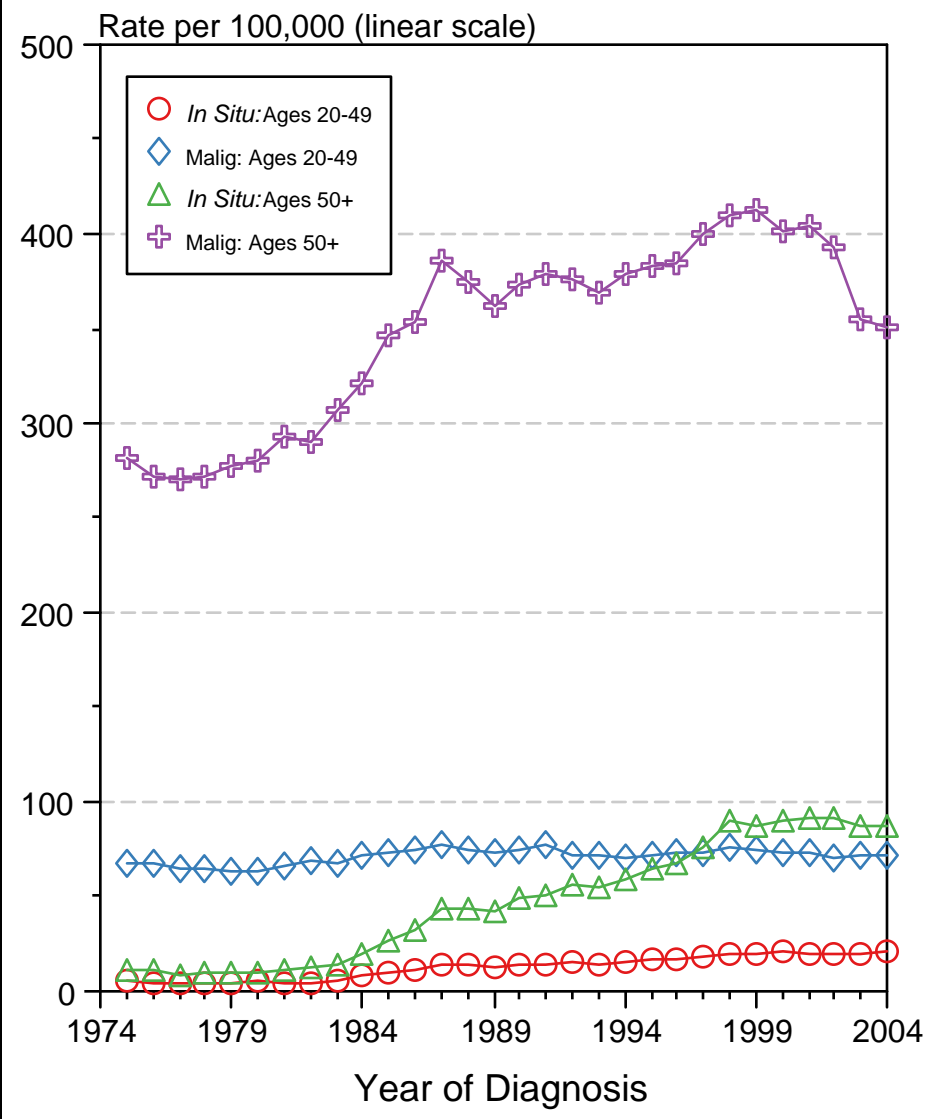
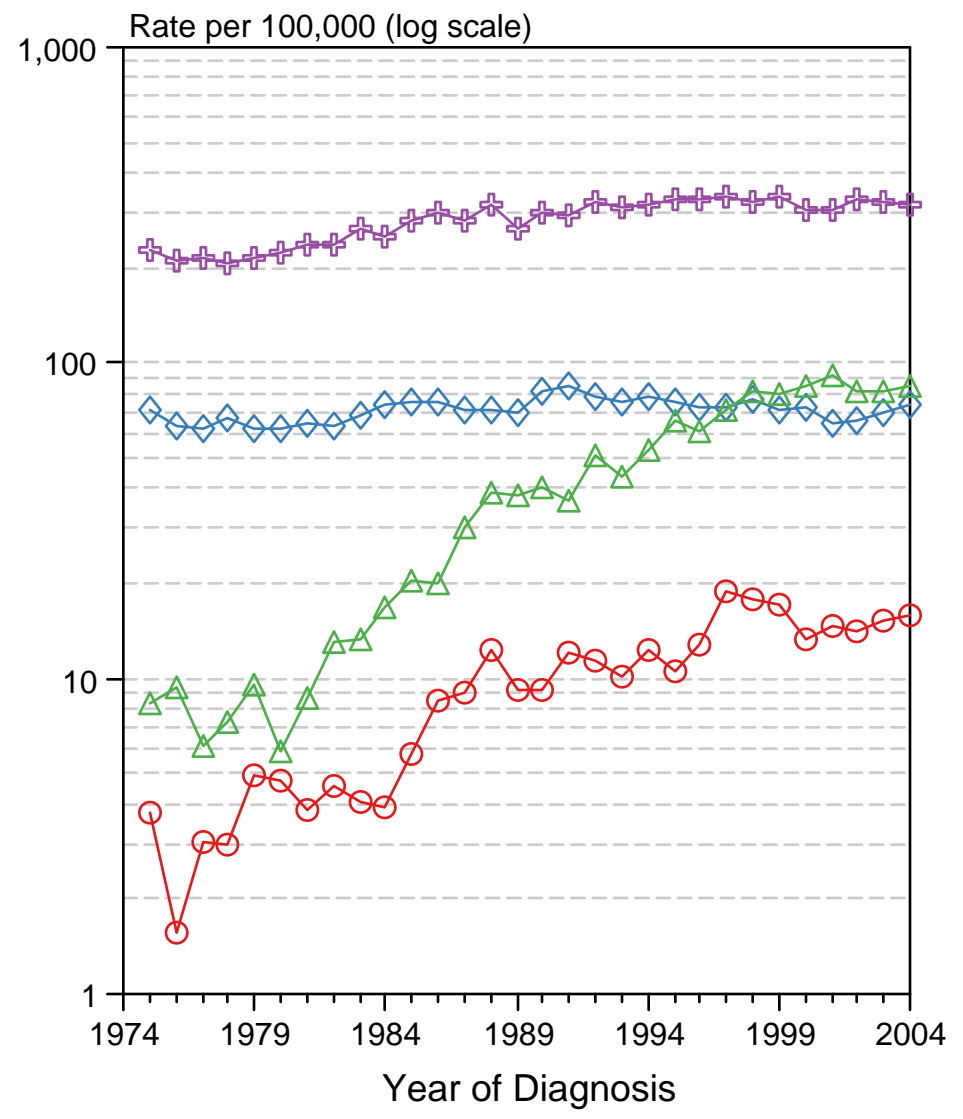
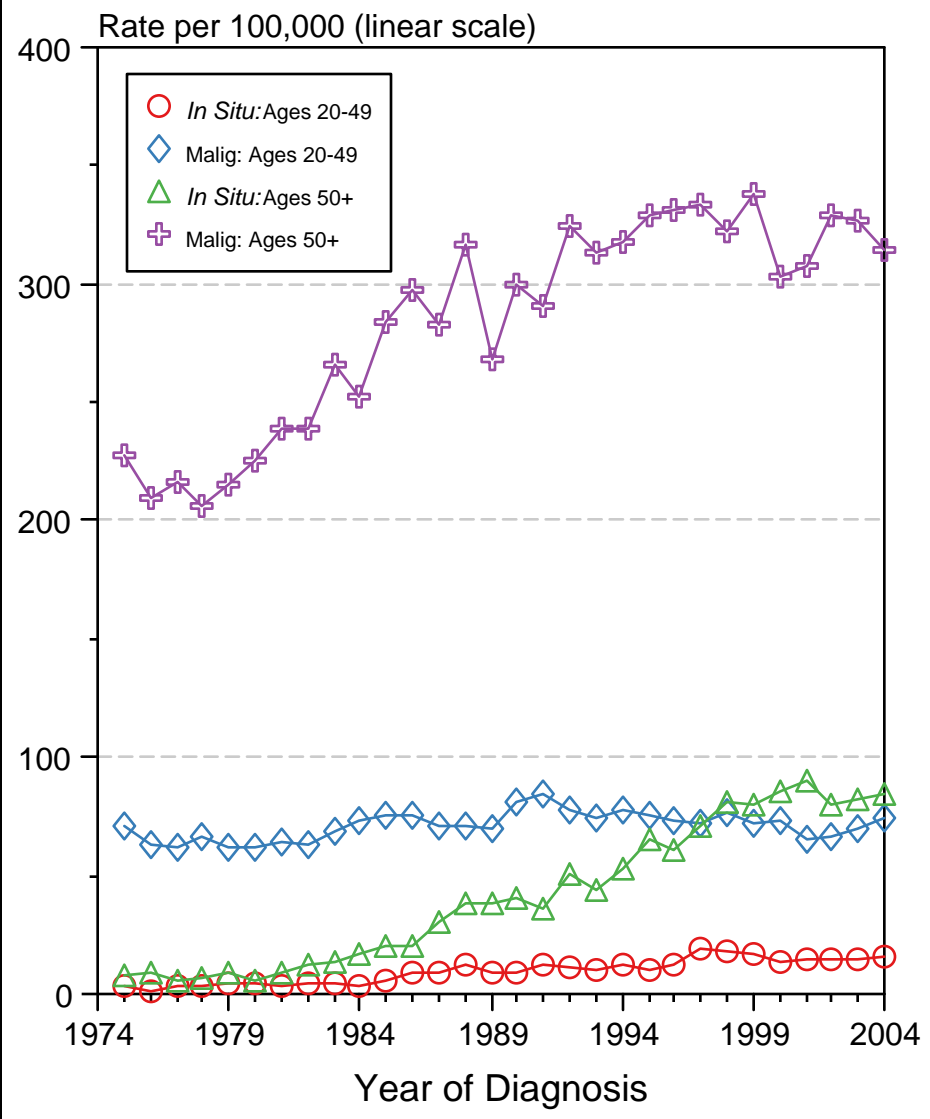


Figure IV-6

Source: SEER 9 areas. Rates are age-adjusted to the 2000 US Std Population (19 age groups - Census P25-1103).

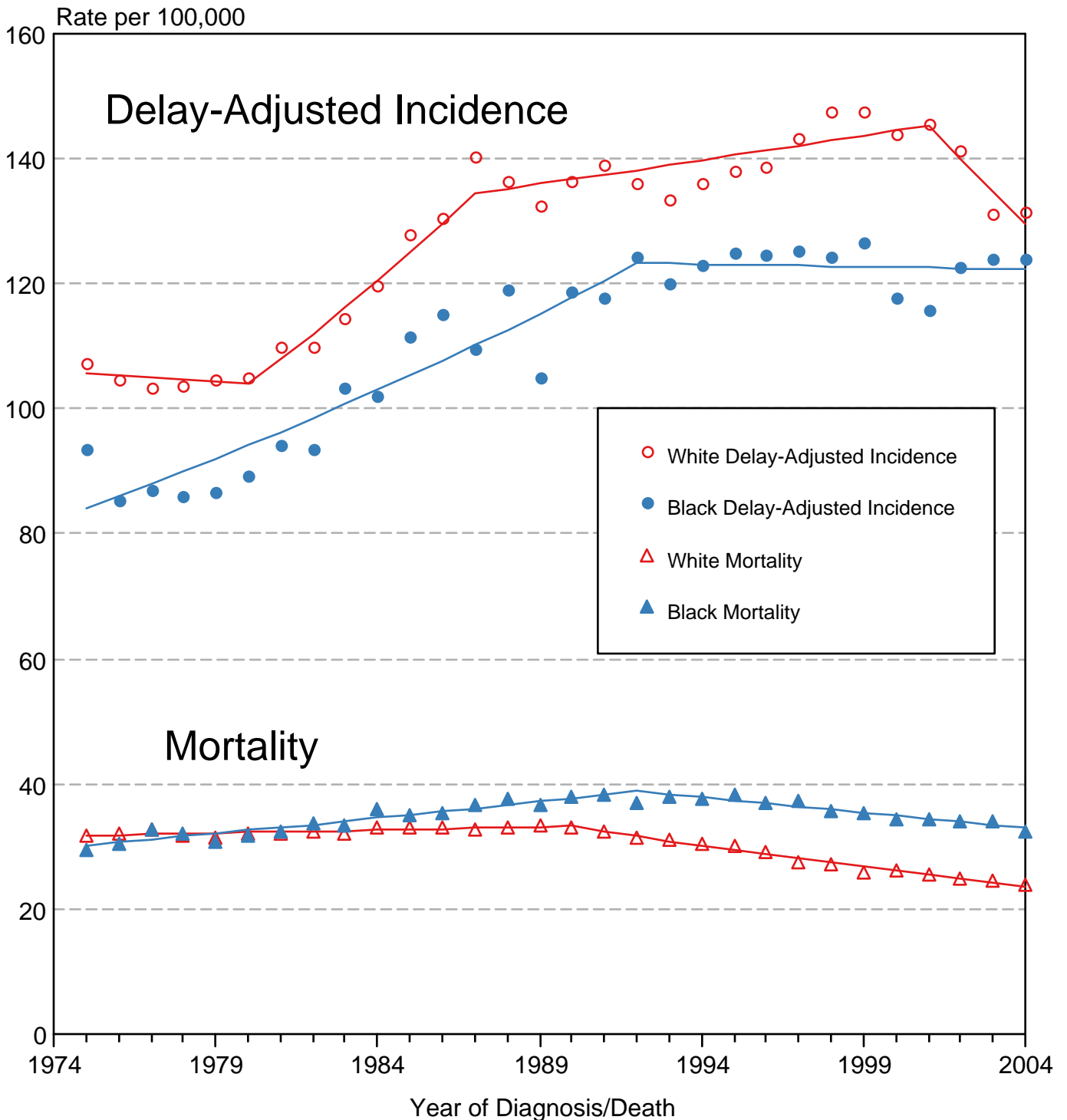
Breast Cancer Incidence Rates, 1975-2004 by Age, *In Situ* vs Malignant Black Female



Source: SEER 9 areas. Rates are age-adjusted to the 2000 US Std Population (19 age groups - Census P25-1103).

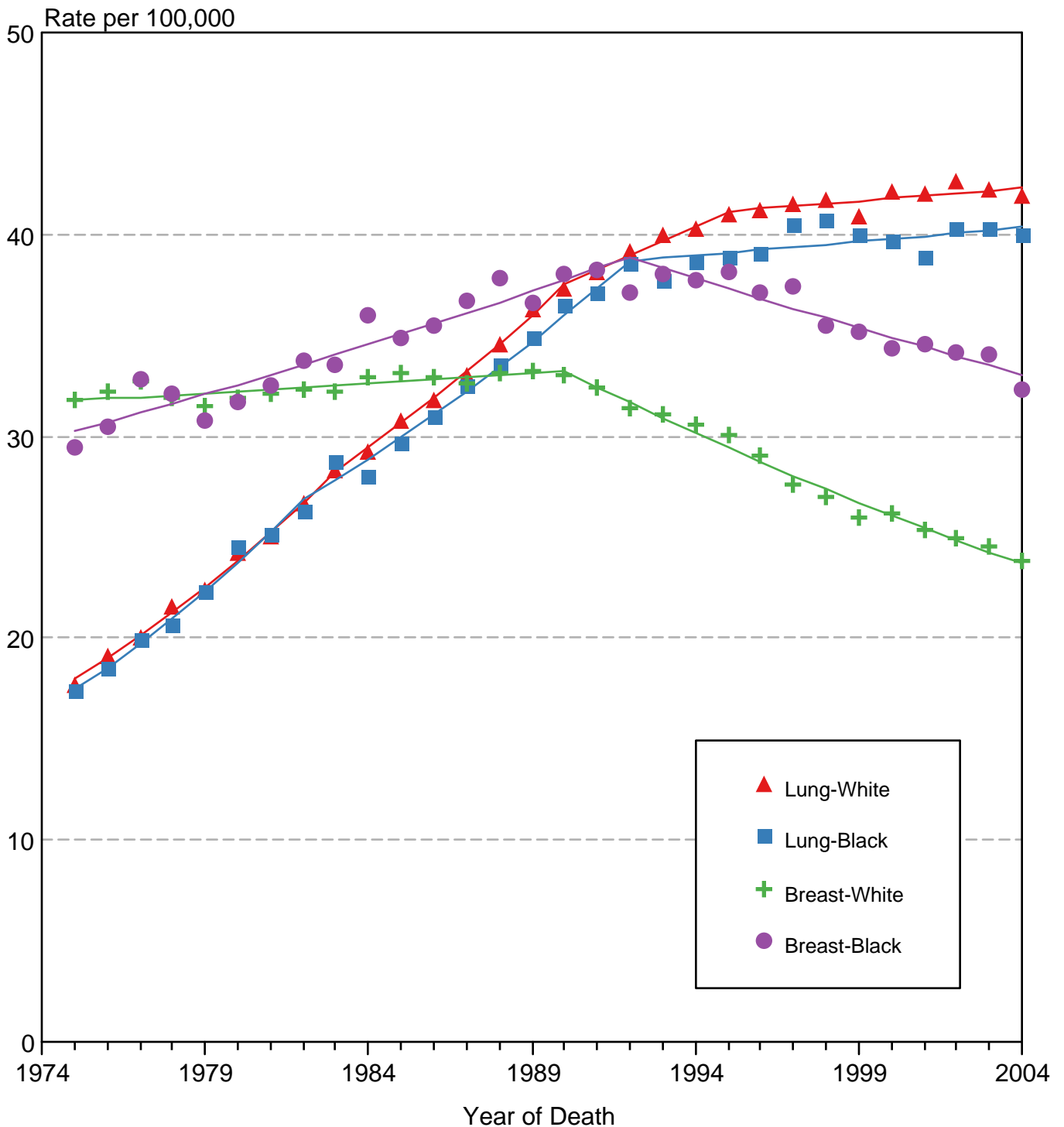
Figure IV-7

Breast Cancer Delay-Adjusted Incidence & Mortality White Females vs Black Females 1975-2004



Source: SEER 9 areas and NCHS public use data file for the total US.
 Rates are age-adjusted to the 2000 US Std Population (19 age groups - Census P25-1103).
 Regression lines are calculated using the Joinpoint Regression Program Version 3.0, April 2005, National Cancer Institute.

Breast vs Lung Cancer Mortality White Females vs Black Females 1975-2004



Source: NCHS public use data file for the total US.
 Rates are age-adjusted to the 2000 US Std Population (19 age groups - Census P25-1103).
 Regression lines are calculated using the Joinpoint Regression Program Version 3.0, April 2005, National Cancer Institute.