

EMBARGOED UNTIL RELEASE AT 8:30 A.M. EDT, WEDNESDAY, October 26, 2005

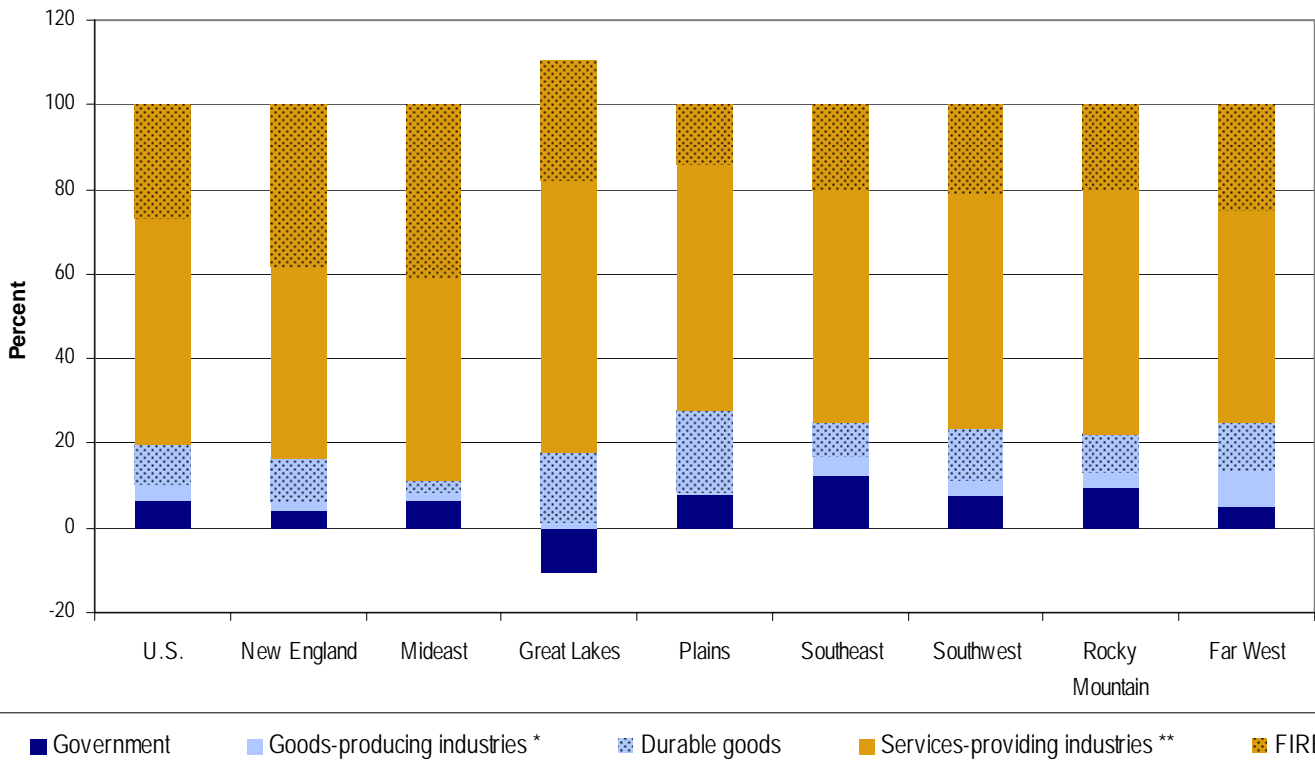
Clifford Woodruff: (202) 606-9234

BEA 05-46

**Widespread Gross State Product (GSP) Growth in 2004**  
**Led by Services-Providing Industries**  
*Accelerated Estimates of GSP by Industry for 2004*

In 2004, U.S. growth in private services-providing industries outpaced growth in private-goods producing industries, 5.1 percent to 3.1 percent. Private services-providing industries accounted for more than 70 percent of economic growth in all 8 BEA regions, according to GSP estimates released by the U.S. Bureau of Economic Analysis (chart 1).<sup>1</sup> Real U.S. GSP grew 4.3 percent in 2004, significantly faster than the 1997-2003 average annual growth rate of 3.0 percent (chart 2).

**Chart 1. Contribution to Percent Change in Real GSP, 2003-2004**

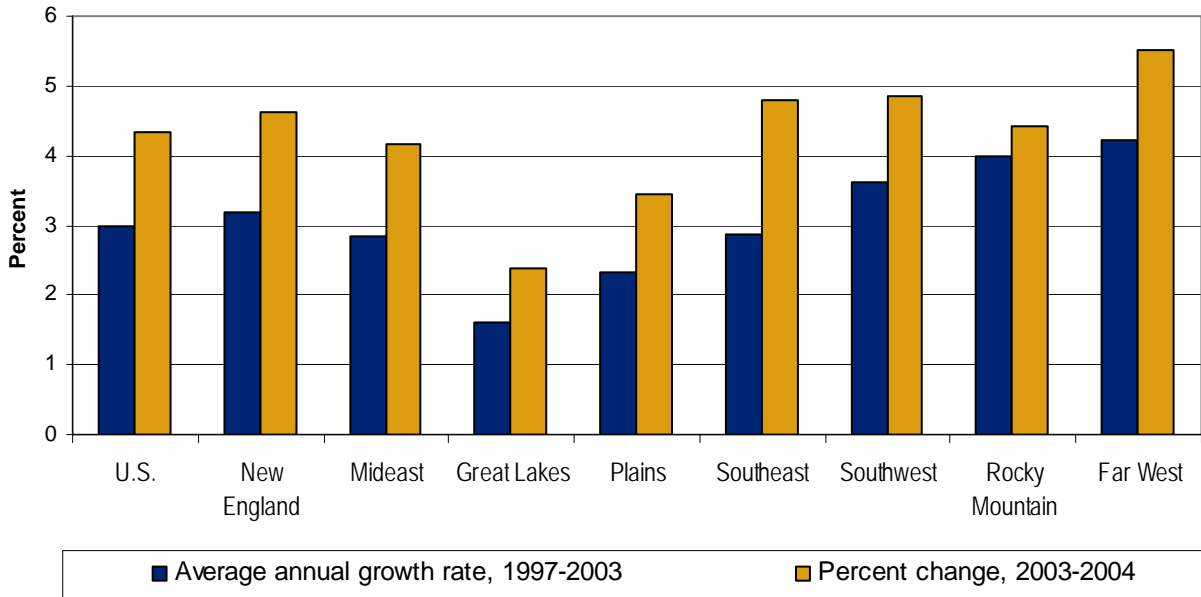


<sup>1</sup> 2004 estimates are based on a prototype methodology to speed up release of BEA's GSP estimates—one of BEA's major goals in its strategic plan, subject to funding. BEA is interested in the views of its data users on this initiative; please send your comments to [gspread@bea.gov](mailto:gspread@bea.gov).

\* Goods-producing industries excluding durable goods.

\*\* Services-providing industries excluding FIRE.

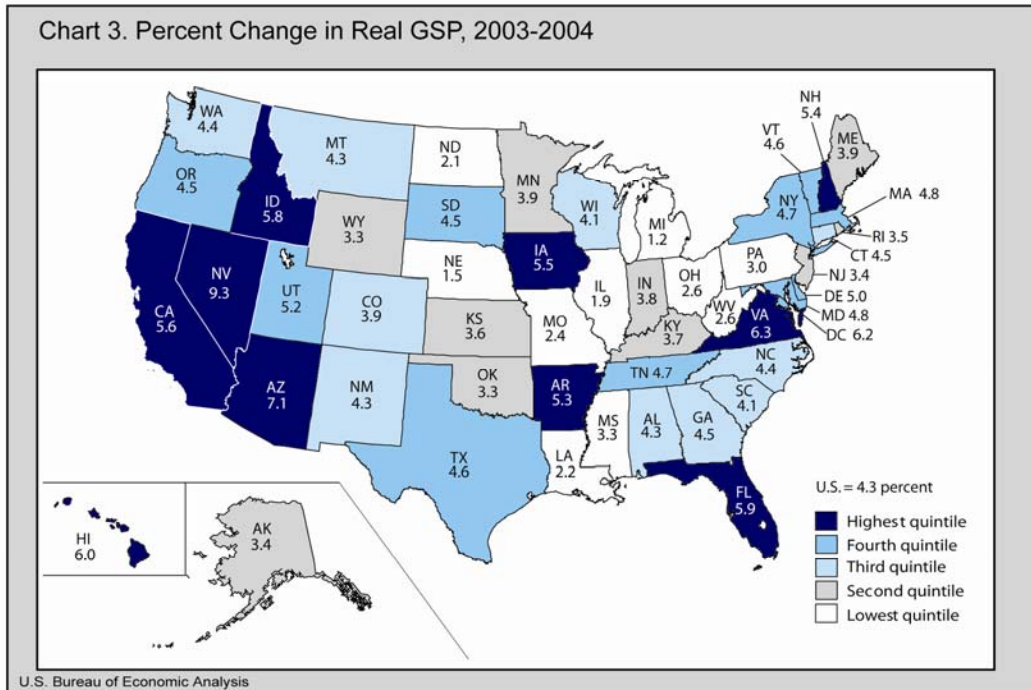
Chart 2. Growth Rates in Real GDP, 1997-2004



### States and Regions

The Far West region grew the fastest in 2004 (5.5 percent), with growth in private goods-producing industries (6.2 percent) slightly outpacing growth in private services-providing industries (5.9 percent). Private services-providing industries contributed more than 75 percent to real GSP growth. Within the Far West, Nevada posted the strongest growth (9.3 percent)—

Chart 3. Percent Change in Real GDP, 2003-2004



the fastest in the Nation (chart 3). The only Far West state with slower growth than the Nation was Alaska (3.4 percent).

The Great Lakes region experienced the slowest growth in 2004 (2.4 percent), with growth in private services-providing industries (3.4 percent) outpacing growth in private goods-producing industries (1.7 percent). Private services-providing industries contributed nearly 93 percent to real GSP growth. Within the Great Lakes, Wisconsin (4.1 percent) grew the fastest but was slower than the national growth rate. Michigan (1.2 percent) experienced the slowest growth of all states.

### **NAICS Industry Sectors<sup>2</sup>**

The two NAICS sectors with the largest contributions to growth were finance and insurance, and real estate, rental, and leasing, which together contributed more than 26 percent to real U.S. GSP growth. Finance and insurance grew 7.8 percent in 2004 and real estate, rental, and leasing grew 4.1 percent. In the 8 BEA regions, the contributions to real GSP growth from these two sectors ranged from a high of 40 percent in the Mideast to a low of 14 percent in the Plains. One of these two sectors was the largest contributor to growth in 21 states.

In addition to the strong growth in private services-providing industries, the manufacturing sector, within private goods-producing industries, continued its strong recovery from the 2001 economic slowdown. In the Great Lakes, Plains, and Southwest regions, durable goods manufacturing contributed the most to real GSP growth of the industry sectors in Table 2.

### **Revisions**

The revisions from the earlier prototype GSP estimates for 2004, released in June 2005 are due to the incorporation of farm income and expense data from the U.S. Department of Agriculture (USDA) as well as the incorporation of revised BEA earnings by industry data. The larger revisions, like those in Iowa and North Dakota, result from the incorporation of the farm data from USDA.

The real GSP growth rate for the Plains was revised down by 0.7 percentage point; the real GSP growth rate for the Southeast was revised up by 0.7 percentage point. In the Plains, only the growth rates for Iowa and North Dakota were revised down by more than 1.0 percentage point. In the Southeast, no state growth rates were revised up by more than 1.0 percentage point.

Tables 1-3 show these results in more detail; complete detail is available on BEA's web site at [www.bea.gov](http://www.bea.gov).

---

<sup>2</sup> NAICS North American Industry Classification System

BEA's national, international, regional, and industry estimates; the *Survey of Current Business*; and BEA news releases are available without charge on BEA's Web site at [www.bea.gov](http://www.bea.gov). By visiting the site, you can also subscribe to receive free e-mail summaries of BEA releases and announcements.

### **Prototype accelerated estimates**

This is the first release of accelerated GSP by industry estimates. These accelerated estimates for 2004—released 8 months earlier than previous estimates—are prepared for NAICS sectors and are based on an abbreviated estimation methodology using limited state source data. The accelerated 2004 estimates are based on BEA earnings by industry estimates released September 28, 2005 and on accelerated GDP by industry estimates released April 20, 2005. In addition, farm income and expense data from the USDA are incorporated into the agriculture, forestry, fishing, and hunting industry. For a more detailed description of the methodology, see the box at [www.bea.gov/bea/articles/2005/07july/0705\\_gspbox.pdf#page=1](http://www.bea.gov/bea/articles/2005/07july/0705_gspbox.pdf#page=1).

This release marks the next step toward regularly providing more timely estimates of GSP by industry. It follows the one year acceleration in the release of prototype current-dollar and real (chained) dollar total GSP (for 2004) in June 2005. The present release represents the continued fulfillment of BEA's strategic plan goal of significantly accelerating the release of its estimates.

### **BEA is interested in your comments**

Given the experimental nature of the accelerated estimates, BEA is interested in your views on the proposed methodology for the estimates, the appropriate level of industry detail, and the tradeoff between accuracy and timeliness. We encourage your feedback on the value of this initiative in BEA's Strategic Plan. Please e-mail your comments to BEA's Associate Director for Regional Economics, John W. Ruser, at [gspread@bea.gov](mailto:gspread@bea.gov).

## **Explanatory Notes**

### **Definitions**

GSP is the state counterpart of the Nation's gross domestic product (GDP), the Bureau's featured and most comprehensive measure of U.S. economic activity. GSP for a state is derived as the sum of the GSP originating in all the industries in the state.

Real GSP is an inflation-adjusted measure of each state's gross product that is based on national prices for the goods and services produced within that state. The estimates of real GSP and of quantity indexes with a base year of 2000 are derived by applying national implicit price deflators to the current-dollar GSP estimates for the 81 NAICS industries for years 1997 forward and for the 63 SIC industries for years 1977-1997. Then, the chain-type index formula that is

used in the national accounts is used to calculate the estimates of total real GSP and of real GSP at more aggregated industry levels.

### **The relation of GSP to Gross Domestic Product (GDP)**

An industry's GSP, or its value added, is equal to its gross output (sales or receipts and other operating income, commodity taxes, and inventory change) minus its intermediate inputs (consumption of goods and services purchased from other U.S. industries or imported). The GSP accounts provide data by industry and state that are consistent with gross domestic product (GDP) in the national income and product accounts, and with the GDP by industry accounts.

**Table 1. Growth Rates in Real Gross State Product, 1997-2004**

	Average annual growth rate 1997-2003		Percent change 2003-2004	
	Percent	Rank	Percent	Rank
<b>United States</b>	<b>3.0</b>	....	<b>4.3</b>	....
<b>New England</b>	<b>3.2</b>	....	<b>4.6</b>	....
Connecticut	2.1	37	4.5	22
Maine	2.2	33	3.9	32
Massachusetts	3.8	10	4.8	13
New Hampshire	3.8	9	5.4	9
Rhode Island	3.1	21	3.5	36
Vermont	4.0	7	4.6	18
<b>Mideast</b>	<b>2.8</b>	....	<b>4.2</b>	....
Delaware	3.5	14	5.0	12
District of Columbia	2.7	....	6.2	....
Maryland	3.4	16	4.8	14
New Jersey	2.7	25	3.4	37
New York	3.0	22	4.7	15
Pennsylvania	2.3	32	3.0	42
<b>Great Lakes</b>	<b>1.6</b>	....	<b>2.4</b>	....
Illinois	1.7	41	1.9	48
Indiana	2.2	36	3.8	33
Michigan	1.2	45	1.2	50
Ohio	1.2	46	2.6	44
Wisconsin	2.6	29	4.1	29
<b>Plains</b>	<b>2.3</b>	....	<b>3.4</b>	....
Iowa	1.8	40	5.5	8
Kansas	2.2	34	3.6	35
Minnesota	3.3	18	3.9	31
Missouri	1.3	44	2.4	45
Nebraska	2.3	31	1.5	49
North Dakota	2.6	27	2.1	47
South Dakota	4.1	6	4.5	20
<b>Southeast</b>	<b>2.9</b>	....	<b>4.8</b>	....
Alabama	2.2	35	4.3	27
Arkansas	1.8	39	5.3	10
Florida	3.8	11	5.9	5
Georgia	3.2	20	4.5	21
Kentucky	1.3	43	3.7	34
Louisiana	0.2	49	2.2	46
Mississippi	1.3	42	3.3	41
North Carolina	3.6	13	4.4	24
South Carolina	2.5	30	4.1	28
Tennessee	2.7	26	4.7	16
Virginia	3.9	8	6.3	3
West Virginia	1.0	48	2.6	43
<b>Southwest</b>	<b>3.6</b>	....	<b>4.8</b>	....
Arizona	5.5	1	7.1	2
New Mexico	2.9	24	4.3	26
Oklahoma	2.1	38	3.3	39
Texas	3.5	15	4.6	17
<b>Rocky Mountain</b>	<b>4.0</b>	....	<b>4.4</b>	....
Colorado	4.4	5	3.9	30
Idaho	5.1	2	5.8	6
Montana	2.6	28	4.3	25
Utah	3.0	23	5.2	11
Wyoming	3.7	12	3.3	40
<b>Far West</b>	<b>4.2</b>	....	<b>5.5</b>	....
Alaska	0.0	50	3.4	38
California	4.6	3	5.6	7
Hawaii	1.0	47	6.0	4
Nevada	4.4	4	9.3	1
Oregon	3.3	19	4.5	19
Washington	3.3	17	4.4	23

Source: U.S. Bureau of Economic Analysis

**Table 2. Contributions to Percent Change in Real Gross State Product, 2003-2004**

State and region	Percent change in real gross state product	Percentage points										
		Agriculture, forestry, fishing, and hunting	Mining	Utilities	Construction	Durable goods manufacturing	Nondurable goods manufacturing	Wholesale trade	Retail trade	Transportation and warehousing	Information	Finance and insurance
<b>United States</b>	<b>4.3</b>	<b>-0.06</b>	<b>0.03</b>	<b>0.11</b>	<b>0.10</b>	<b>0.43</b>	<b>0.12</b>	<b>0.19</b>	<b>0.37</b>	<b>0.10</b>	<b>0.44</b>	<b>0.63</b>
<b>New England</b>	<b>4.6</b>	<b>-0.01</b>	<b>0.00</b>	<b>0.13</b>	<b>0.07</b>	<b>(d)</b>	<b>(d)</b>	<b>0.09</b>	<b>0.35</b>	<b>0.03</b>	<b>0.43</b>	<b>1.20</b>
Connecticut	4.5	-0.03	0.00	0.29	0.20	0.48	0.03	0.07	0.30	0.06	0.41	1.49
Maine	3.9	-0.07	0.00	0.04	0.05	0.23	0.22	0.17	0.60	0.07	0.26	0.20
Massachusetts	4.8	0.01	0.00	0.00	0.00	0.51	-0.02	0.10	0.33	0.00	0.44	1.44
New Hampshire	5.4	0.00	0.00	0.40	0.16	0.81	0.01	0.23	0.45	0.04	0.48	0.24
Rhode Island	3.5	0.00	0.00	-0.02	-0.12	(d)	(d)	0.02	0.26	-0.02	0.64	0.95
Vermont	4.6	-0.16	-0.02	0.35	0.33	0.56	0.09	-0.07	0.59	0.06	0.28	0.11
<b>Midwest</b>	<b>4.2</b>	<b>-0.03</b>	<b>0.00</b>	<b>0.06</b>	<b>0.02</b>	<b>0.12</b>	<b>0.08</b>	<b>0.11</b>	<b>0.29</b>	<b>0.05</b>	<b>0.45</b>	<b>1.18</b>
Delaware	5.0	0.18	0.00	0.00	0.23	-0.01	-0.20	0.28	0.31	0.13	0.17	1.52
District of Columbia	6.2	0.00	0.00	0.04	-0.06	0.02	0.01	0.04	0.10	-0.02	0.70	0.59
Maryland	4.8	0.00	0.00	0.14	0.26	0.19	0.07	0.18	0.43	0.08	0.35	0.27
New Jersey	3.4	-0.02	0.00	0.07	0.07	0.10	0.14	-0.14	0.19	0.07	0.34	0.49
New York	4.7	-0.03	0.00	0.05	-0.07	0.13	0.12	0.11	0.34	0.04	0.63	2.16
Pennsylvania	3.0	-0.07	-0.01	0.03	-0.01	0.13	0.02	0.27	0.26	0.06	0.24	0.42
<b>Great Lakes</b>	<b>2.4</b>	<b>-0.03</b>	<b>-0.01</b>	<b>0.05</b>	<b>-0.06</b>	<b>0.40</b>	<b>0.13</b>	<b>0.12</b>	<b>0.23</b>	<b>0.09</b>	<b>0.29</b>	<b>0.35</b>
Illinois	1.9	0.04	-0.02	0.07	-0.15	0.34	0.03	0.18	0.26	0.12	0.33	0.54
Indiana	3.8	-0.03	-0.02	0.14	0.01	0.83	0.49	0.16	0.24	0.09	0.31	0.21
Michigan	1.2	-0.02	0.00	0.00	-0.09	0.07	0.00	-0.01	0.23	0.07	0.22	0.07
Ohio	2.6	-0.09	-0.01	-0.06	-0.02	0.28	0.06	0.13	0.14	0.10	0.23	0.42
Wisconsin	4.1	-0.11	0.00	0.15	0.03	0.88	0.39	0.18	0.29	0.05	0.41	0.38
<b>Plains</b>	<b>3.4</b>	<b>-0.15</b>	<b>0.00</b>	<b>0.15</b>	<b>0.03</b>	<b>0.66</b>	<b>0.14</b>	<b>0.23</b>	<b>0.32</b>	<b>0.05</b>	<b>0.44</b>	<b>0.39</b>
Iowa	5.5	1.04	0.00	0.29	0.14	1.05	0.31	0.24	0.26	0.16	0.40	0.69
Kansas	3.6	-0.37	0.05	0.18	-0.06	0.58	0.27	0.19	0.29	0.04	0.57	0.20
Minnesota	3.9	-0.06	-0.02	0.17	0.04	0.76	0.03	0.24	0.39	0.13	0.42	0.47
Missouri	2.4	0.05	0.01	0.09	-0.02	0.47	0.15	0.17	0.25	-0.14	0.46	0.16
Nebraska	1.5	-1.62	0.00	0.08	0.03	0.32	-0.02	0.27	0.34	0.15	0.32	0.32
North Dakota	2.1	-2.67	0.02	0.15	0.31	0.62	0.19	0.38	0.38	0.14	0.46	0.42
South Dakota	4.5	-0.12	-0.04	0.04	0.07	0.84	0.16	0.23	0.38	0.04	0.24	1.01
<b>Southeast</b>	<b>4.8</b>	<b>-0.04</b>	<b>-0.03</b>	<b>0.12</b>	<b>0.19</b>	<b>0.38</b>	<b>0.11</b>	<b>0.28</b>	<b>0.46</b>	<b>0.11</b>	<b>0.39</b>	<b>0.45</b>
Alabama	4.3	-0.02	-0.05	0.13	0.06	0.65	0.27	0.26	0.49	0.13	0.25	0.36
Arkansas	5.3	0.65	0.01	0.11	0.05	0.16	0.39	0.49	0.44	0.06	0.43	0.24
Florida	5.9	-0.08	-0.01	0.24	0.50	0.28	0.05	0.35	0.64	0.10	0.47	0.60
Georgia	4.5	-0.20	-0.03	0.04	0.13	0.41	0.45	0.25	0.34	0.22	0.52	0.45
Kentucky	3.7	-0.18	-0.08	0.04	-0.09	0.73	0.31	0.30	0.33	0.20	0.22	0.37
Louisiana	2.2	-0.07	-0.29	0.19	-0.11	0.07	-0.16	0.10	0.27	0.03	0.26	0.20
Mississippi	3.3	-0.01	0.01	0.25	-0.18	0.47	0.03	0.19	0.40	0.10	0.10	0.15
North Carolina	4.4	0.09	0.00	0.08	0.12	0.49	-0.12	0.29	0.34	0.07	0.30	0.67
South Carolina	4.1	-0.07	-0.01	0.20	0.06	0.42	0.22	0.33	0.52	0.04	0.24	0.21
Tennessee	4.7	-0.10	-0.02	0.01	0.04	0.61	0.30	0.31	0.49	0.11	0.21	0.48
Virginia	6.3	-0.01	0.00	0.06	0.31	0.22	-0.10	0.22	0.47	0.09	0.66	0.42
West Virginia	2.6	0.00	0.02	0.06	0.24	0.09	-0.15	0.21	0.48	0.12	0.02	0.09
<b>Southwest</b>	<b>4.8</b>	<b>-0.15</b>	<b>0.20</b>	<b>0.13</b>	<b>0.03</b>	<b>0.59</b>	<b>0.09</b>	<b>0.26</b>	<b>0.39</b>	<b>0.21</b>	<b>0.32</b>	<b>0.47</b>
Arizona	7.1	-0.07	-0.01	0.04	0.38	1.04	0.02	0.41	0.78	0.22	0.26	0.62
New Mexico	4.3	-0.26	0.21	0.14	0.18	0.61	0.06	0.08	0.52	0.18	0.11	0.13
Oklahoma	3.3	-0.63	0.28	0.10	-0.05	0.29	0.13	0.17	0.36	0.17	0.35	0.36
Texas	4.6	-0.10	0.24	0.16	-0.04	0.53	0.10	0.25	0.30	0.21	0.34	0.47
<b>Rocky Mountain</b>	<b>4.4</b>	<b>-0.23</b>	<b>0.14</b>	<b>0.12</b>	<b>0.14</b>	<b>(d)</b>	<b>(d)</b>	<b>0.16</b>	<b>0.46</b>	<b>0.12</b>	<b>0.38</b>	<b>0.24</b>
Colorado	3.9	-0.17	0.20	0.15	0.06	0.33	0.08	0.07	0.32	0.08	0.34	0.21
Idaho	5.8	-0.56	0.00	0.06	0.34	1.46	0.04	0.26	0.61	0.10	0.41	0.21
Montana	4.3	0.00	0.24	0.09	0.23	-0.02	0.03	0.29	0.55	0.15	0.31	0.32
Utah	5.2	-0.16	-0.01	0.06	0.29	0.28	0.24	0.25	0.70	0.18	0.53	0.33
Wyoming	3.3	-0.70	0.33	0.20	-0.16	(d)	(d)	0.33	0.36	0.31	0.25	0.14
<b>Far West</b>	<b>5.5</b>	<b>-0.06</b>	<b>0.05</b>	<b>0.16</b>	<b>0.28</b>	<b>0.62</b>	<b>0.20</b>	<b>0.21</b>	<b>0.45</b>	<b>0.10</b>	<b>0.72</b>	<b>0.60</b>
Alaska	3.4	0.00	-0.17	0.02	0.08	0.02	0.00	0.08	0.30	0.43	0.24	0.11
California	5.6	-0.06	0.08	0.18	0.26	0.67	0.24	0.15	0.43	0.06	0.89	0.67
Hawaii	6.0	-0.21	0.00	0.12	0.13	0.03	0.06	0.12	0.55	0.22	0.38	0.40
Nevada	9.3	-0.04	-0.05	0.22	1.28	0.19	0.09	0.25	0.90	0.29	0.08	1.14
Oregon	4.5	-0.15	0.00	0.11	0.14	1.50	0.14	0.41	0.43	0.11	0.39	-0.05
Washington	4.4	0.00	0.00	0.07	0.17	0.24	0.07	0.47	0.46	0.15	0.27	0.37

(d) Data are suppressed to avoid disclosure of confidential information.

Source: U.S. Bureau of Economic Analysis

**Table 2. Contributions to Percent Change in Real Gross State Product, 2003-2004 (continued)**

State and region	Percentage points									
	Real estate, rental, and leasing	Professional and technical services	Management of companies	Administrative and waste services	Educational services	Health care and social assistance	Arts, entertainment, and recreation	Accommodation and food services	Other services	Government
<b>United States</b>	<b>0.52</b>	<b>0.28</b>	<b>0.10</b>	<b>0.17</b>	<b>-0.01</b>	<b>0.21</b>	<b>0.02</b>	<b>0.15</b>	<b>0.17</b>	<b>0.27</b>
<b>New England</b>	<b>0.56</b>	<b>0.41</b>	<b>0.08</b>	<b>0.14</b>	<b>-0.02</b>	<b>0.19</b>	<b>0.02</b>	<b>0.11</b>	<b>0.13</b>	<b>0.20</b>
Connecticut	0.38	0.12	0.02	0.13	-0.03	0.14	0.02	0.08	0.12	0.20
Maine	0.58	0.16	0.16	0.00	-0.02	0.48	-0.02	0.16	0.16	0.42
Massachusetts	0.62	0.66	0.08	0.14	-0.03	0.17	0.02	0.12	0.13	0.14
New Hampshire	0.71	0.37	0.39	0.20	0.00	0.24	0.06	0.18	0.17	0.25
Rhode Island	0.49	0.24	-0.07	0.25	-0.02	0.23	-0.02	0.08	0.16	0.24
Vermont	0.88	0.23	0.00	0.25	0.00	0.25	0.05	0.17	0.17	0.44
<b>Mideast</b>	<b>0.52</b>	<b>0.36</b>	<b>0.05</b>	<b>0.12</b>	<b>-0.03</b>	<b>0.21</b>	<b>0.03</b>	<b>0.11</b>	<b>0.18</b>	<b>0.28</b>
Delaware	1.12	0.30	0.04	0.10	0.01	0.24	0.03	0.12	0.10	0.31
District of Columbia	0.41	1.25	-0.03	0.11	-0.04	0.13	-0.04	0.23	0.66	2.13
Maryland	0.82	0.67	0.11	0.13	0.01	0.22	0.04	0.11	0.20	0.48
New Jersey	1.03	0.25	0.00	0.14	-0.10	0.21	-0.01	0.09	0.16	0.32
New York	0.23	0.30	0.00	0.10	-0.01	0.17	0.06	0.12	0.14	0.13
Pennsylvania	0.45	0.30	0.16	0.15	-0.03	0.27	0.01	0.07	0.19	0.13
<b>Great Lakes</b>	<b>0.33</b>	<b>0.11</b>	<b>0.12</b>	<b>0.16</b>	<b>-0.01</b>	<b>0.16</b>	<b>-0.01</b>	<b>0.09</b>	<b>0.15</b>	<b>-0.25</b>
Illinois	0.36	0.20	0.14	0.20	-0.01	0.10	-0.01	0.12	0.15	-1.13
Indiana	0.36	0.12	0.03	0.20	-0.01	0.18	0.00	0.08	0.16	0.22
Michigan	0.19	-0.05	0.10	0.11	0.00	0.09	-0.01	0.07	0.12	0.01
Ohio	0.32	0.14	0.17	0.14	-0.01	0.20	-0.02	0.07	0.16	0.20
Wisconsin	0.48	0.11	0.09	0.12	0.00	0.27	-0.01	0.09	0.16	0.09
<b>Plains</b>	<b>0.09</b>	<b>0.16</b>	<b>0.11</b>	<b>0.10</b>	<b>0.00</b>	<b>0.20</b>	<b>0.00</b>	<b>0.09</b>	<b>0.16</b>	<b>0.27</b>
Iowa	0.15	0.08	0.03	0.08	0.00	0.18	-0.01	0.08	0.16	0.17
Kansas	0.30	0.26	-0.01	0.11	0.00	0.21	0.01	0.12	0.12	0.56
Minnesota	0.04	0.17	0.38	0.09	-0.01	0.26	-0.01	0.09	0.17	0.13
Missouri	-0.14	0.13	-0.01	0.16	0.00	0.13	0.00	0.09	0.16	0.23
Nebraska	0.26	0.20	0.04	0.04	0.00	0.19	0.00	0.08	0.17	0.37
North Dakota	0.35	0.20	0.04	0.08	0.00	0.25	0.00	0.08	0.12	0.60
South Dakota	0.62	0.07	-0.09	0.01	0.00	0.27	0.02	0.11	0.21	0.48
<b>Southeast</b>	<b>0.51</b>	<b>0.34</b>	<b>0.07</b>	<b>0.21</b>	<b>0.01</b>	<b>0.25</b>	<b>0.03</b>	<b>0.18</b>	<b>0.18</b>	<b>0.58</b>
Alabama	0.31	0.23	0.09	0.13	0.01	0.26	0.01	0.08	0.17	0.47
Arkansas	0.59	0.45	-0.10	0.15	0.00	0.28	0.00	0.12	0.18	0.56
Florida	0.53	0.40	0.01	0.27	0.01	0.30	0.09	0.33	0.22	0.56
Georgia	0.54	0.14	0.16	0.27	-0.01	0.23	-0.03	0.17	0.13	0.33
Kentucky	0.23	0.14	0.10	0.13	0.00	0.19	0.01	0.10	0.13	0.55
Louisiana	0.50	0.16	0.02	0.11	0.00	0.20	0.01	0.14	0.18	0.40
Mississippi	0.36	0.13	-0.06	0.15	0.01	0.24	0.00	0.13	0.14	0.64
North Carolina	0.52	0.22	0.11	0.13	0.00	0.22	0.01	0.13	0.15	0.62
South Carolina	0.42	0.13	0.02	0.25	-0.01	0.17	0.01	0.16	0.17	0.57
Tennessee	0.59	0.19	0.05	0.31	0.03	0.39	0.04	0.12	0.16	0.34
Virginia	0.70	1.02	0.15	0.23	0.01	0.19	0.00	0.17	0.22	1.23
West Virginia	0.12	0.14	0.08	0.14	-0.01	0.23	0.16	0.08	0.24	0.29
<b>Southwest</b>	<b>0.55</b>	<b>0.27</b>	<b>0.28</b>	<b>0.25</b>	<b>0.01</b>	<b>0.25</b>	<b>0.01</b>	<b>0.14</b>	<b>0.16</b>	<b>0.36</b>
Arizona	1.08	0.40	0.24	0.31	0.05	0.42	0.02	0.24	0.16	0.47
New Mexico	0.58	0.15	0.01	0.13	0.00	0.32	0.01	0.12	0.17	0.86
Oklahoma	0.37	0.08	0.08	0.23	0.01	0.23	0.02	0.07	0.17	0.54
Texas	0.45	0.28	0.33	0.25	0.00	0.21	0.01	0.13	0.16	0.28
<b>Rocky Mountain</b>	<b>0.66</b>	<b>0.40</b>	<b>0.17</b>	<b>0.17</b>	<b>0.00</b>	<b>0.22</b>	<b>-0.02</b>	<b>0.16</b>	<b>0.20</b>	<b>0.42</b>
Colorado	0.47	0.55	0.28	0.12	0.00	0.17	-0.04	0.17	0.17	0.36
Idaho	1.07	0.24	0.09	0.26	0.00	0.31	0.00	0.13	0.15	0.62
Montana	0.89	0.15	-0.11	0.13	0.00	0.30	-0.01	0.15	0.21	0.41
Utah	0.81	0.29	0.03	0.30	-0.01	0.24	0.00	0.12	0.29	0.43
Wyoming	0.78	0.14	0.11	-0.04	0.01	0.19	0.05	0.25	0.10	0.50
<b>Far West</b>	<b>0.78</b>	<b>0.24</b>	<b>0.06</b>	<b>0.16</b>	<b>0.00</b>	<b>0.22</b>	<b>0.04</b>	<b>0.22</b>	<b>0.18</b>	<b>0.28</b>
Alaska	0.46	0.11	0.02	0.06	-0.01	0.39	0.01	0.16	0.06	0.98
California	0.82	0.25	0.00	0.15	0.00	0.19	0.04	0.18	0.18	0.17
Hawaii	0.77	0.13	0.35	0.15	-0.01	0.23	0.04	0.76	0.20	1.62
Nevada	1.32	0.31	0.75	0.29	0.02	0.34	0.10	1.05	0.23	0.60
Oregon	0.30	0.19	0.06	0.07	0.01	0.28	0.00	0.13	0.19	0.31
Washington	0.58	0.21	0.08	0.24	0.00	0.24	0.08	0.13	0.17	0.42

Source: U.S. Bureau of Economic Analysis



**Table 3. Gross State Product in Current Dollars, 2004**

(Millions of dollars)

State and region	Total	Agriculture, forestry, fishing, and hunting	Mining	Utilities	Construction	Durable goods manufacturing	Nondurable goods manufacturing	Wholesale trade	Retail trade	Transportation and warehousing	Information	Finance and insurance
<b>United States</b>	<b>11,665,595</b>	<b>116,589</b>	<b>147,502</b>	<b>241,236</b>	<b>541,414</b>	<b>862,611</b>	<b>631,415</b>	<b>688,096</b>	<b>797,638</b>	<b>338,643</b>	<b>547,191</b>	<b>972,393</b>
<b>New England</b>	<b>662,408</b>	<b>2,227</b>	<b>263</b>	<b>11,532</b>	<b>30,713</b>	(d)	(d)	<b>37,405</b>	<b>42,582</b>	<b>11,319</b>	<b>27,674</b>	<b>83,126</b>
Connecticut	185,802	303	54	3,570	6,459	15,821	6,832	9,842	11,507	3,007	7,360	30,916
Maine	43,336	575	5	941	2,021	2,612	2,565	2,303	4,073	1,031	1,272	2,991
Massachusetts	317,798	751	124	3,833	15,870	25,262	9,650	18,774	17,795	5,267	14,813	37,768
New Hampshire	51,871	214	40	1,816	2,850	4,847	1,623	3,316	4,605	902	1,679	4,366
Rhode Island	41,679	96	12	735	2,459	(d)	(d)	2,062	2,746	644	1,720	5,795
Vermont	21,921	289	28	637	1,054	2,263	691	1,108	1,855	468	830	1,290
<b>Mideast</b>	<b>2,139,830</b>	<b>5,774</b>	<b>3,532</b>	<b>46,909</b>	<b>82,975</b>	<b>86,658</b>	<b>115,174</b>	<b>122,106</b>	<b>127,125</b>	<b>49,846</b>	<b>113,630</b>	<b>258,574</b>
Delaware	54,274	344	9	950	1,870	1,681	3,160	2,001	2,432	667	1,002	17,897
District of Columbia	76,685	2	12	700	769	99	111	752	1,031	483	5,120	4,267
Maryland	227,991	747	163	6,195	13,396	6,387	7,675	12,025	15,358	4,843	8,462	15,525
New Jersey	416,053	543	199	8,280	17,768	13,776	31,581	33,273	27,156	12,602	19,020	35,109
New York	896,739	1,670	454	18,457	28,773	30,345	31,736	47,242	49,541	16,557	62,071	150,069
Pennsylvania	468,089	2,468	2,695	12,326	20,398	34,370	40,911	26,814	31,608	14,695	17,955	35,707
<b>Great Lakes</b>	<b>1,753,120</b>	<b>12,917</b>	<b>4,278</b>	<b>38,518</b>	<b>78,138</b>	<b>229,015</b>	<b>114,068</b>	<b>107,021</b>	<b>115,732</b>	<b>54,712</b>	<b>56,899</b>	<b>136,188</b>
Illinois	521,900	3,802	1,113	12,139	24,587	39,042	31,986	36,794	31,515	18,638	21,802	52,311
Indiana	227,569	2,192	821	5,362	10,618	42,517	20,960	11,937	14,886	7,615	5,497	13,791
Michigan	372,169	1,891	721	8,158	16,593	61,943	14,318	21,422	25,790	9,369	10,634	21,967
Ohio	419,866	1,930	1,322	9,009	16,970	56,984	27,649	25,288	29,639	12,477	12,284	32,518
Wisconsin	211,616	3,101	302	3,851	9,370	28,530	19,155	11,580	13,902	6,613	6,682	15,601
<b>Plains</b>	<b>757,432</b>	<b>19,452</b>	<b>3,039</b>	<b>14,732</b>	<b>35,349</b>	<b>67,393</b>	<b>46,366</b>	<b>48,993</b>	<b>52,667</b>	<b>28,747</b>	<b>33,690</b>	<b>66,924</b>
Iowa	111,114	5,147	197	2,849	4,555	12,678	10,181	6,413	7,274	3,771	3,672	11,878
Kansas	98,946	2,052	1,224	2,367	4,164	9,328	5,569	6,209	7,241	3,758	7,739	6,234
Minnesota	223,822	3,147	528	3,574	11,468	19,605	11,065	15,668	14,910	7,250	8,231	23,448
Missouri	203,294	2,658	447	3,885	9,867	17,445	14,036	12,759	14,611	7,538	9,963	12,878
Nebraska	68,183	3,403	57	912	3,028	4,136	4,169	4,547	4,588	4,788	2,491	5,742
North Dakota	22,687	1,112	512	644	1,048	1,711	655	1,813	1,728	897	810	1,500
South Dakota	29,386	1,931	74	501	1,219	2,490	691	1,584	2,315	744	785	5,244
<b>Southeast</b>	<b>2,597,424</b>	<b>27,013</b>	<b>32,505</b>	<b>52,460</b>	<b>127,790</b>	<b>170,684</b>	<b>185,101</b>	<b>155,803</b>	<b>192,297</b>	<b>84,328</b>	<b>106,827</b>	<b>172,810</b>
Alabama	139,840	2,391	1,275	4,224	6,249	13,528	9,890	7,961	11,528	3,977	4,194	7,814
Arkansas	80,902	3,154	336	1,782	3,647	7,755	7,095	5,333	6,006	3,983	3,338	3,646
Florida	599,068	5,339	694	11,815	36,332	20,693	11,659	39,285	49,063	16,952	26,719	43,919
Georgia	343,125	3,263	1,047	6,819	17,163	19,831	27,846	25,847	22,996	12,963	22,445	21,864
Kentucky	136,446	1,838	2,547	2,103	5,849	17,397	11,311	8,043	9,529	6,414	3,514	6,909
Louisiana	152,944	1,356	19,669	4,492	6,554	5,089	11,014	7,854	10,768	5,649	4,043	6,066
Mississippi	76,166	2,121	1,074	2,218	3,082	7,013	5,148	3,956	6,603	2,678	1,909	3,404
North Carolina	336,398	3,546	545	6,354	14,629	25,312	46,983	18,717	22,017	8,132	10,707	34,542
South Carolina	136,125	1,198	158	3,944	7,670	13,953	12,312	7,643	10,903	3,170	3,608	6,665
Tennessee	217,626	1,164	387	886	8,518	22,026	16,116	14,555	18,408	10,595	6,630	13,804
Virginia	329,332	1,377	1,314	5,384	15,945	15,058	23,287	14,237	20,445	8,206	18,396	22,215
West Virginia	49,454	267	3,462	2,440	2,150	3,028	2,441	2,370	4,032	1,610	1,323	1,964
<b>Southwest</b>	<b>1,252,700</b>	<b>12,693</b>	<b>69,901</b>	<b>34,179</b>	<b>59,165</b>	<b>91,359</b>	<b>56,367</b>	<b>78,689</b>	<b>90,936</b>	<b>42,338</b>	<b>52,940</b>	<b>83,807</b>
Arizona	199,953	1,943	1,288	3,585	12,273	20,634	2,916	11,378	16,795	5,606	6,302	17,189
New Mexico	61,012	1,001	4,766	1,400	2,763	4,318	1,128	2,202	4,431	1,657	1,716	2,284
Oklahoma	107,600	1,842	6,876	2,710	4,429	7,337	4,644	5,586	8,405	3,448	4,423	5,739
Texas	884,136	7,907	56,971	26,485	39,700	59,070	47,679	59,523	61,304	31,627	40,500	58,595
<b>Rocky Mountain</b>	<b>377,613</b>	<b>5,644</b>	<b>12,012</b>	<b>7,083</b>	<b>22,766</b>	(d)	(d)	<b>19,659</b>	<b>27,053</b>	<b>12,361</b>	<b>23,065</b>	<b>25,171</b>
Colorado	199,969	1,629	3,928	2,840	12,194	8,983	5,546	10,636	13,250	5,530	17,460	13,573
Idaho	43,571	2,075	134	924	2,903	4,299	1,932	2,326	3,616	1,212	999	1,865
Montana	27,482	1,091	916	1,005	1,627	807	608	1,523	2,187	1,158	856	1,422
Utah	82,611	493	1,036	1,206	4,771	5,510	3,057	4,266	6,563	3,071	3,333	7,633
Wyoming	23,979	356	5,997	1,108	1,272	(d)	(d)	907	1,437	1,390	417	678
<b>Far West</b>	<b>2,125,068</b>	<b>30,868</b>	<b>21,972</b>	<b>35,822</b>	<b>104,518</b>	<b>143,835</b>	<b>79,680</b>	<b>118,419</b>	<b>149,245</b>	<b>54,992</b>	<b>132,465</b>	<b>145,794</b>
Alaska	34,023	346	7,328	408	1,725	156	569	720	1,785	3,153	909	1,174
California	1,550,753	21,504	12,730	27,570	71,266	109,961	65,891	86,822	108,804	35,658	101,556	110,701
Hawaii	50,322	311	20	961	2,526	290	656	1,751	3,741	1,753	1,496	2,426
Nevada	100,317	203	1,405	2,031	10,313	2,114	1,340	3,981	7,982	3,345	2,269	8,502
Oregon	128,103	3,379	133	2,239	6,175	15,308	4,273	9,032	8,063	3,752	4,434	7,010
Washington	261,549	5,125	355	2,612	12,513	16,006	6,949	16,112	18,871	7,330	21,801	15,982

(d) Data are suppressed to avoid disclosure of confidential information.

Source: U.S. Bureau of Economic Analysis

**Table 3. Gross State Product in Current Dollars, 2004 (continued)**

[Millions of dollars]

State and region	Real estate, rental, and leasing	Professional and technical services	Management of companies	Administrative and waste services	Educational services	Health care and social assistance	Arts, entertainment, and recreation	Accommodation and food services	Other services	Government
<b>United States</b>	<b>1,451,288</b>	<b>792,133</b>	<b>213,639</b>	<b>335,580</b>	<b>99,503</b>	<b>804,397</b>	<b>111,758</b>	<b>308,058</b>	<b>275,491</b>	<b>1,389,018</b>
<b>New England</b>	<b>89,041</b>	<b>54,128</b>	<b>14,215</b>	<b>16,848</b>	<b>12,343</b>	<b>54,745</b>	<b>5,669</b>	<b>16,016</b>	<b>14,015</b>	<b>62,376</b>
Connecticut	24,370	13,896	5,512	4,769	2,554	13,820	1,705	3,328	3,830	16,348
Maine	5,821	1,943	513	912	396	4,554	349	1,329	970	6,159
Massachusetts	43,439	31,729	6,507	8,475	7,289	26,353	2,572	7,676	6,538	27,313
New Hampshire	7,232	3,195	796	1,312	849	4,195	505	1,560	1,250	4,718
Rhode Island	5,421	2,198	838	954	848	3,798	348	1,161	893	4,945
Vermont	2,760	1,167	48	426	406	2,025	190	962	533	2,891
<b>Mideast</b>	<b>282,820</b>	<b>182,109</b>	<b>44,820</b>	<b>56,420</b>	<b>29,058</b>	<b>163,534</b>	<b>19,745</b>	<b>49,205</b>	<b>50,885</b>	<b>248,929</b>
Delaware	6,290	3,257	2,396	852	234	2,709	353	833	827	4,510
District of Columbia	6,068	15,264	445	1,915	1,869	3,505	407	2,175	4,586	27,106
Maryland	34,763	22,780	1,436	6,669	2,574	16,815	1,718	6,106	6,006	38,348
New Jersey	65,656	33,652	8,888	12,719	3,218	28,411	3,508	10,013	8,453	42,228
New York	114,056	75,337	23,899	22,372	12,898	70,059	10,292	20,163	18,946	91,801
Pennsylvania	55,986	31,819	7,756	11,894	8,264	42,035	3,467	9,915	12,068	44,936
<b>Great Lakes</b>	<b>197,928</b>	<b>110,953</b>	<b>38,191</b>	<b>49,061</b>	<b>13,040</b>	<b>126,650</b>	<b>15,325</b>	<b>38,298</b>	<b>41,561</b>	<b>174,625</b>
Illinois	64,434	42,671	11,840	15,622	5,122	34,115	4,743	11,825	12,988	44,812
Indiana	22,197	8,319	2,536	5,665	1,545	16,035	2,978	4,869	5,247	21,982
Michigan	42,930	28,977	8,799	12,121	1,952	26,332	3,177	7,925	8,408	38,742
Ohio	44,588	22,368	10,634	11,384	2,902	33,201	2,969	9,173	10,207	46,370
Wisconsin	23,778	8,618	4,382	4,270	1,517	16,968	1,458	4,505	4,712	22,719
<b>Plains</b>	<b>72,976</b>	<b>36,814</b>	<b>17,714</b>	<b>17,046</b>	<b>6,065</b>	<b>56,679</b>	<b>6,952</b>	<b>17,300</b>	<b>18,378</b>	<b>90,156</b>
Iowa	9,834	3,332	683	2,100	878	7,475	1,093	2,132	2,403	12,568
Kansas	8,790	4,408	908	2,467	496	6,930	489	2,323	2,396	13,854
Minnesota	24,875	13,026	7,926	5,013	1,629	17,637	1,872	4,892	5,423	22,635
Missouri	19,529	11,586	6,748	5,011	2,269	15,149	2,676	5,216	5,335	23,686
Nebraska	5,872	2,897	1,033	1,602	516	4,919	407	1,394	1,608	10,075
North Dakota	1,840	855	190	359	93	2,069	125	565	535	3,626
South Dakota	2,237	709	226	493	185	2,501	290	778	677	3,712
<b>Southeast</b>	<b>304,114</b>	<b>151,652</b>	<b>39,487</b>	<b>84,645</b>	<b>16,599</b>	<b>173,802</b>	<b>25,173</b>	<b>74,438</b>	<b>62,720</b>	<b>357,174</b>
Alabama	14,362	8,103	1,022	3,116	643	9,668	599	3,169	3,583	22,543
Arkansas	7,417	2,915	1,949	1,575	319	6,150	400	1,784	1,923	10,394
Florida	93,036	36,865	7,468	30,995	3,882	44,590	10,214	22,060	16,087	71,400
Georgia	38,293	20,690	6,737	11,054	2,519	19,585	2,205	8,707	7,152	44,099
Kentucky	12,306	5,856	1,507	2,853	697	10,484	792	3,435	2,957	20,107
Louisiana	15,354	7,003	2,174	3,508	1,140	10,555	2,491	4,620	3,705	19,839
Mississippi	7,221	2,639	758	1,352	416	5,497	808	3,155	1,855	13,261
North Carolina	32,848	15,627	6,820	7,939	2,167	19,862	2,231	7,535	6,960	42,924
South Carolina	15,185	5,830	824	4,919	650	7,668	1,051	4,417	3,263	21,094
Tennessee	23,219	10,256	2,568	7,916	1,864	17,985	2,115	6,611	5,735	26,268
Virginia	40,274	33,911	7,305	8,454	2,067	17,000	1,731	7,582	8,282	56,862
West Virginia	4,598	1,957	356	965	234	4,757	534	1,363	1,220	8,383
<b>Southwest</b>	<b>134,596</b>	<b>76,191</b>	<b>18,556</b>	<b>39,459</b>	<b>6,475</b>	<b>78,652</b>	<b>8,315</b>	<b>32,962</b>	<b>28,442</b>	<b>156,679</b>
Arizona	26,327	11,210	3,009	8,176	1,186	13,382	1,961	6,414	3,966	24,413
New Mexico	7,105	4,026	323	1,713	280	4,107	455	1,831	1,334	12,173
Oklahoma	10,494	4,878	1,458	3,217	559	7,518	533	2,499	2,776	18,229
Texas	90,670	56,077	13,764	26,354	4,450	53,645	5,365	22,218	20,366	101,864
<b>Rocky Mountain</b>	<b>48,448</b>	<b>26,766</b>	<b>5,571</b>	<b>10,579</b>	<b>2,208</b>	<b>22,711</b>	<b>4,064</b>	<b>10,801</b>	<b>9,528</b>	<b>49,965</b>
Colorado	27,827	17,082	2,979	6,325	1,075	11,596	2,460	6,018	4,790	24,248
Idaho	5,191	2,780	661	1,180	212	2,914	368	1,048	856	6,074
Montana	3,229	1,291	154	544	100	2,491	365	906	715	4,488
Utah	10,101	4,917	1,691	2,239	776	4,646	679	2,083	2,758	11,781
Wyoming	2,101	697	87	291	46	1,063	191	746	410	3,373
<b>Far West</b>	<b>321,365</b>	<b>153,520</b>	<b>35,085</b>	<b>61,521</b>	<b>13,715</b>	<b>127,623</b>	<b>26,516</b>	<b>69,038</b>	<b>49,962</b>	<b>249,114</b>
Alaska	3,209	1,181	196	580	101	2,017	282	912	605	6,668
California	240,370	121,686	24,957	45,365	10,822	90,286	19,814	39,975	37,302	167,709
Hawaii	8,331	2,274	708	1,646	489	3,422	607	4,239	1,290	11,384
Nevada	12,722	4,955	2,475	3,051	201	4,946	2,688	14,196	1,742	9,857
Oregon	17,937	6,397	2,604	3,314	808	9,770	895	3,245	2,947	16,386
Washington	38,797	17,027	4,144	7,566	1,293	17,182	2,229	6,472	6,076	37,109

Source: U.S. Bureau of Economic Analysis