

U.S. Census Bureau News

U.S. Department of Commerce • Washington, D.C. 20233

FOR IMMEDIATE RELEASE
WEDNESDAY, JUNE 15, 2005 AT 10:00 A.M EDT

Dave Lassman / Mary Potter
Service Sector Statistics Division
(301) 763-2960

CB05-54

U.S. Government Estimates of Quarterly Revenue for Selected Services

Notice of Expanded Coverage: Preliminary quarterly service estimates are included for the first time for hospitals and nursing and residential care facilities.

Information The Department of Commerce's Census Bureau announced today that the estimate of U.S. information sector revenue for the first calendar quarter of 2005, not adjusted for seasonal variation, holiday or trading-day differences, or price changes, was \$227.4 billion, a decrease of 4.1 percent ($\pm 0.5\%$) from the fourth quarter of 2004 and up 5.0 percent ($\pm 0.8\%$) from the first quarter of 2004. The third to fourth quarter percent change was revised from 5.6 percent ($\pm 0.3\%$) to 5.0 percent ($\pm 0.5\%$). The telecommunications industry estimate was \$86.8 billion, a decrease of 1.0 percent ($\pm 0.3\%$) from the fourth quarter of 2004 and up 2.1 percent ($\pm 1.0\%$) from the first quarter of 2004. The publishing subsector estimate was \$58.8 billion, a decrease of 8.1 percent ($\pm 1.0\%$) from the fourth quarter of 2004 and up 4.9 percent ($\pm 1.5\%$) from the first quarter of 2004.

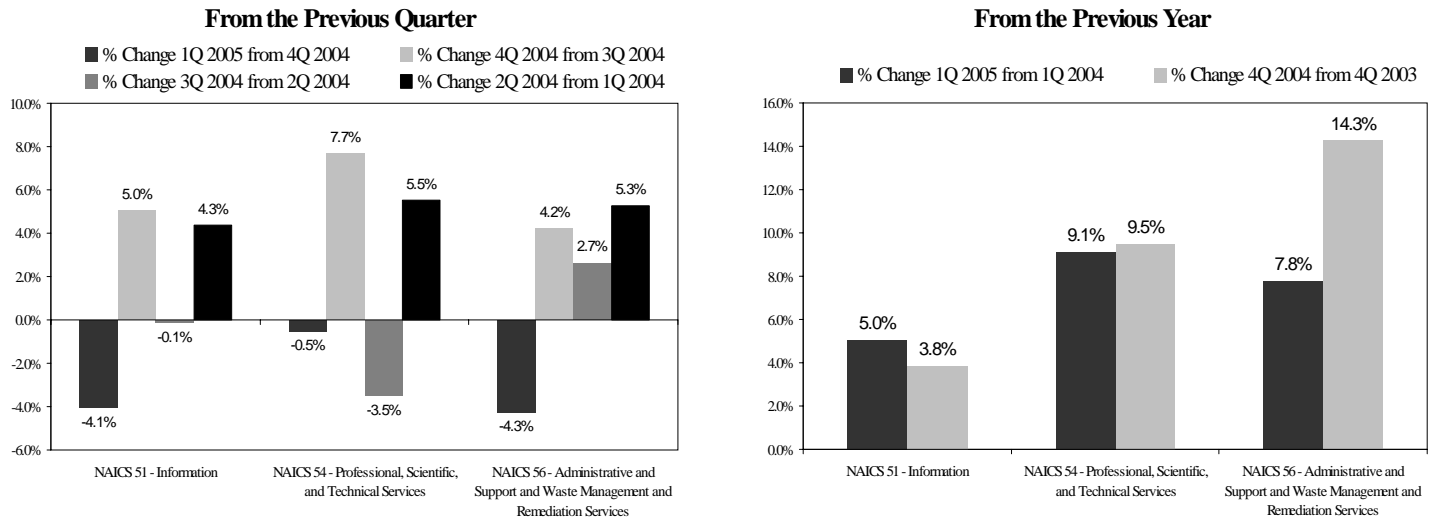
Professional, scientific, and technical services The estimate of U.S. professional, scientific, and technical services revenue for the first quarter of 2005, not adjusted for seasonal variation, holiday or trading-day differences, or price changes, was \$250.2 billion, a decrease of 0.5 percent ($\pm 1.5\%$)* from the fourth quarter of 2004 and up 9.1 percent ($\pm 2.1\%$) from the first quarter of 2004. The third to fourth quarter percent change was not revised from 7.7 percent ($\pm 1.5\%$). The architectural, engineering, and related services industry estimate was \$54.3 billion, a decrease of 2.1 percent ($\pm 2.8\%$)* from the fourth quarter of 2004 and up 6.3 percent ($\pm 4.0\%$) from the first quarter of 2004.

Administrative and support and waste management and remediation services The estimate of U.S. administrative and support and waste management and remediation services revenue for the first quarter of 2005, not adjusted for seasonal variation, holiday or trading-day differences, or price changes, was \$124.0 billion, a decrease of 4.3 percent ($\pm 1.5\%$) from the fourth quarter of 2004 and up 7.8 percent ($\pm 3.1\%$) from the first quarter of 2004. The third to fourth quarter percent change was revised from 3.7 percent ($\pm 1.0\%$) to 4.2 percent ($\pm 1.5\%$). The employment services industry estimate was \$34.7 billion, a decrease of 6.9 percent ($\pm 3.0\%$) from the fourth quarter of 2004 and up 13.8 percent ($\pm 7.1\%$) from the first quarter of 2004.

Hospitals and nursing and residential care facilities The estimate of U.S. hospitals and nursing and residential care facilities revenue for the first quarter of 2005, not adjusted for seasonal variation, holiday or trading-day differences, or price changes, was \$190.1 billion, an increase of 2.4 percent ($\pm 0.7\%$) from the fourth quarter of 2004.

For survey description and an explanation of the measures of sampling variability included in this report, please see the last page of this publication.

Quarterly Percent Change in Revenue for Selected Services



Second quarter 2005 revenue is scheduled to be released on September 14, 2005, at 10:00 a.m. EDT

This report is available on the day of issue through the Department of Commerce's STAT-USA Website; for more information, call (202) 482-1986.

* The 90 percent confidence interval includes zero. The Census Bureau does not have sufficient statistical evidence to conclude that the actual change is different from zero.

Our internet site is <http://www.census.gov/gss>

Table 1. Selected Services - Estimated Revenue for Employer Firms

[Estimates have not been adjusted for seasonal variation, holiday or trading-day differences, or price changes. Estimates are based on data from the Quarterly Services Survey]

NAICS code ¹	Kind of business	Total revenue (millions of dollars)						Percent change					
		1Q 2005 (p)	4Q 2004 (r)	3Q 2004	2Q 2004	1Q 2004	4Q 2003	1Q 2005 from 4Q 2004 (p)	4Q 2004 from 3Q 2004 (r)	3Q 2004 from 2Q 2004	2Q 2004 from 1Q 2004	1Q 2005 from 1Q 2004 (p)	4Q 2004 from 4Q 2003 (r)
51	Information	227,366	236,969	225,588	225,858	216,455	228,197	-4.1	5.0	-0.1	4.3	5.0	3.8
511	Publishing industries	58,824	64,010	59,563	58,580	56,064	63,007	-8.1	7.5	1.7	4.5	4.9	1.6
51111	Newspaper publishers	12,404	13,505	12,463	12,757	12,093	12,999	-8.2	8.4	-2.3	5.5	2.6	3.9
51112	Periodical publishers	8,544	9,539	9,543	9,308	8,189	9,052	-10.4	Z	2.5	13.7	4.3	5.4
5111 pt	Book, database and directory, and other publishers ²	13,888	14,717	14,371	13,371	12,922	14,418	-5.6	2.4	7.5	3.5	7.5	2.1
5112	Software publishers	23,988	26,249	23,186	23,144	22,860	26,538	-8.6	13.2	0.2	1.2	4.9	-1.1
512	Motion picture and sound recording industries	17,234	19,539	16,012	18,074	17,175	20,480	-11.8	22.0	-11.4	5.2	0.3	-4.6
513	Broadcasting and telecommunications	129,824	131,507	128,829	127,865	122,805	123,189	-1.3	2.1	0.8	4.1	5.7	6.8
5131	Radio and television broadcasting	14,791	16,190	15,205	15,701	13,302	14,176	-8.6	6.5	-3.2	18.0	11.2	14.2
5132	Cable networks and program distribution	28,190	27,641	26,242	25,802	24,474	23,617	2.0	5.3	1.7	5.4	15.2	17.0
5133	Telecommunications	86,843	87,676	87,382	86,362	85,029	85,396	-1.0	0.3	1.2	1.6	2.1	2.7
51331	Wired telecommunications carriers	50,312	51,350	51,484	52,066	52,541	53,237	-2.0	-0.3	-1.1	-0.9	-4.2	-3.5
51332	Wireless telecommunications carriers (except satellite)	31,444	31,641	31,367	29,759	28,214	27,708	-0.6	0.9	5.4	5.5	11.4	14.2
5133 pt	Other telecommunications ³	5,087	4,685	4,531	4,537	4,274	4,451	8.6	3.4	-0.1	6.2	19.0	5.3
514	Information services and data processing services	21,484	21,913	21,184	21,339	20,411	21,521	-2.0	3.4	-0.7	4.5	5.3	1.8
5141	Information services	8,744	8,923	8,281	8,272	7,920	7,938	-2.0	7.8	0.1	4.4	10.4	12.4
5142	Data processing services	12,740	12,990	12,903	13,067	12,491	13,583	-1.9	0.7	-1.3	4.6	2.0	-4.4
54	Professional, scientific, and technical services ⁴	250,232	251,500	233,571	241,999	229,320	229,739	-0.5	7.7	-3.5	5.5	9.1	9.5
5412	Accounting, tax preparation, bookkeeping, and payroll services	30,376	21,085	19,990	23,572	27,565	21,727	44.1	5.5	-15.2	-14.5	10.2	-3.0
5413	Architectural, engineering, and related services ⁵	54,348	55,496	52,645	56,991	51,105	48,637	-2.1	5.4	-7.6	11.5	6.3	14.1
5415	Computer systems design and related services	46,250	45,952	45,066	44,681	44,967	44,254	0.6	2.0	0.9	-0.6	2.9	3.8
5416	Management, scientific, and technical consulting services	32,055	31,730	29,962	30,199	27,631	27,630	1.0	5.9	-0.8	9.3	16.0	14.8
5418	Advertising and related services	17,457	19,091	17,311	17,196	16,207	17,053	-8.6	10.3	0.7	6.1	7.7	12.0
541 pt	Other professional, scientific, and technical services ⁶	69,746	78,146	68,597	69,360	61,845	70,438	-10.7	13.9	-1.1	12.2	12.8	10.9
56	Administrative and support and waste management and remediation services ⁷	124,027	129,561	124,355	121,139	115,086	113,368	-4.3	4.2	2.7	5.3	7.8	14.3
561	Administrative and support services ⁷	111,991	115,634	110,347	108,415	103,104	101,048	-3.2	4.8	1.8	5.2	8.6	14.4
5613	Employment services	34,715	37,268	34,560	33,583	30,505	31,059	-6.9	7.8	2.9	10.1	13.8	20.0
5615	Travel arrangement and reservation services	7,110	6,778	6,822	7,157	6,338	6,008	4.9	-0.6	-4.7	12.9	12.2	12.8
561 pt	Other administrative and support services ⁸	70,166	71,588	68,965	67,675	66,261	63,981	-2.0	3.8	1.9	2.1	5.9	11.9
562	Waste management and remediation services	12,036	13,927	14,008	12,724	11,982	12,320	-13.6	-0.6	10.1	6.2	0.5	13.0
62 pt	Selected health care services ⁹	190,111	185,618	NA	NA	NA	NA	2.4	NA	NA	NA	NA	NA
622	Hospitals	155,480	150,346	NA	NA	NA	NA	3.4	NA	NA	NA	NA	NA
623	Nursing and residential care facilities	34,631	35,272	NA	NA	NA	NA	-1.8	NA	NA	NA	NA	NA

(p) Preliminary estimate. (r) Revised estimate. Z Less than .05 percent. NA Not available.

(1) For a full description of the NAICS codes used in this table, see www.census.gov/epcd/www/naics.html.

(2) Includes NAICS 51113 (book publishers), 51114 (database and directory publishers), and 51119 (other publishers).

(3) Includes NAICS 51333 (telecommunications resellers), 51334 (satellite telecommunications), and 51339 (other telecommunications).

(4) Excludes NAICS 54112 (offices of notaries), 54132 (landscape architectural services), and 54194 (veterinary services).

(5) Excludes NAICS 54132 (landscape architectural services).

(6) Includes NAICS 5411 (legal services except NAICS 54112 (offices of notaries)), 5414 (specialized design services), 5417 (scientific research and development services), and 5419 (other professional, scientific, and technical services except NAICS 54194 (veterinary services)).

(7) Excludes NAICS 56173 (landscaping services).

(8) Includes NAICS 5611 (office administrative services), 5612 (facilities support services), 5614 (business support services), 5616 (investigation and security services), 5617 (services to buildings and dwellings except NAICS 56173 (landscaping services)), and 5619 (other support services).

(9) Includes NAICS 622 (hospitals) and 623 (nursing and residential care facilities).

Note: Sector totals and subsector totals may include data for kinds of business not shown. Table 2 provides estimated measures of sampling variability. Data users who create their own estimates using data from this report should cite the U.S. Census Bureau as the source of the original data only. Additional information on confidentiality protection, sampling error, nonsampling error, sample design, and definitions may be found at www.census.gov/svsd/www/qssreliability.html.

Table 2. Selected Services - Estimated Measures of Sampling Variability

[Estimates are shown as percents and are based on data from the Quarterly Services Survey]

NAICS code	Kind of business	Median coefficient ¹ of variation for quarterly total revenue	Median standard error ¹ for percent change	
			Ratio of two consecutive quarters	Current quarter to current quarter last year
51	Information	0.5	0.3	0.5
511	Publishing industries	1.0	0.6	0.9
51111	Newspaper publishers	0.8	0.4	0.6
51112	Periodical publishers	1.6	0.8	1.2
5111 pt	Book, database and directory, and other publishers	3.0	2.0	3.0
5112	Software publishers	2.1	1.1	2.0
512	Motion picture and sound recording industries	2.9	2.9	3.2
513	Broadcasting and telecommunications	0.6	0.2	0.3
5131	Radio and television broadcasting	2.0	0.9	1.4
5132	Cable networks and program distribution	1.2	0.2	1.2
5133	Telecommunications	0.9	0.2	0.6
51331	Wired telecommunications carriers	1.4	0.3	0.7
51332	Wireless telecommunications carriers (except satellite)	0.4	0.1	0.3
5133 pt	Other telecommunications	7.1	1.6	3.7
514	Information services and data processing services	1.7	0.5	1.4
5141	Information services	2.2	1.0	1.4
5142	Data processing services	2.6	0.6	2.3
54	Professional, scientific, and technical services	1.4	0.9	1.3
5412	Accounting, tax preparation, bookkeeping, and payroll services	6.5	2.3	2.7
5413	Architectural, engineering, and related services	2.8	1.7	2.4
5415	Computer systems design and related services	3.0	1.2	1.7
5416	Management, scientific, and technical consulting services	3.4	2.0	3.2
5418	Advertising and related services	2.5	2.0	2.5
541 pt	Other professional, scientific, and technical services	2.2	2.1	3.0
56	Administrative and support and waste management and remediation services	2.6	0.9	1.9
561	Administrative and support services	2.7	1.0	1.9
5613	Employment services	6.6	1.8	4.3
5615	Travel arrangement and reservation services	6.7	3.3	4.6
561 pt	Other administrative and support services	1.8	1.1	1.8
562	Waste management and remediation services	3.9	2.4	3.2
62 pt	Selected health care services	1.1	0.4	NA
622	Hospitals	1.2	0.4	NA
623	Nursing and residential care facilities	2.3	1.0	NA

NA Not available.

(1) The medians are based on estimates for the most recent four quarters if available.

Note: Additional information on confidentiality protection, sampling error, nonsampling error, sample design, and definitions may be found at www.census.gov/svsd/www/qssreliability.html.

Survey Description

The U.S. Census Bureau conducts the Quarterly Services Survey (QSS) to provide national estimates of quarterly revenue for firms located in the United States and classified in selected service industries. The QSS sample includes firms classified in NAICS 51 (Information), NAICS 54 (Professional, scientific, and technical services), NAICS 56 (Administrative and support and waste management and remediation services), or NAICS 62 (Hospitals, and nursing and residential care facilities). Each quarter, questionnaires are mailed to a probability sample of approximately 6,000 employer firms selected from the larger Service Annual Survey (SAS) sample. The QSS sample includes firms of all sizes and is updated on a quarterly basis to account for new service businesses, deaths, and other changes to the survey universe. Data for nonresponding firms are imputed based on data for similar-sized firms classified in the same kind of business. For NAICS 51 (Information), imputed revenue amounts to about 9 percent of the total revenue estimate; for NAICS 54 (Professional, scientific, and technical services) imputed revenue amounts to about 26 percent; for NAICS 56 (Administrative and support and waste management and remediation services) imputed revenue amounts to about 30 percent; and for NAICS 62 (Hospitals and nursing and residential care facilities) imputed revenue amounts to about 21 percent. Quarterly revenue estimates are obtained by summing weighted data (either reported or imputed). The weight for each unit is a product of two factors: the reciprocal of the probability of selecting the unit into the sample and a weight that adjusts the quarterly estimates using SAS results. Additional information on the QSS can be found on the Census Bureau website at: www.census.gov/qss.

Reliability of the Estimates

Because the estimates presented in this report are based on a sample survey, they may contain sampling error and nonsampling error.

Sampling error is the difference between an estimate and the result that would be obtained from a complete enumeration of the sampling frame conducted under the same survey conditions. This error occurs because only a subset of the entire sampling frame is measured in a sample survey. Standard errors and coefficients of variation, as given in Table 2 of this report, are estimated measures of sampling variability.

The first page of this release gives statements that compare sample survey estimates from two points in time. The corresponding change between each pair of estimates is accompanied by a number in parentheses, called the “margin of error.” This number can be used to construct a range about the change estimate which is a 90-percent confidence interval. If, for example, a particular change estimate is +1.2 percent and its associated margin of error is ± 1.5 percentage points, then the 90-percent confidence interval for the change estimate is -0.3 percent to +2.7 percent. If the interval contains zero, then one does not have sufficient evidence to conclude at the 90-percent confidence level that the change is different from zero. The margin of error is computed by multiplying the estimated standard error of the estimate, obtained from Table 2, by 1.65. For quarterly totals, the estimated coefficient of variation (CV) is given. For these estimates, the confidence interval is computed as (the estimated quarterly total) $\pm 1.65 \times CV \times$ (the estimated quarterly total). For any change estimate cited without a margin of error, the estimate has undergone statistical testing so that one may conclude, with 90-percent confidence, that the change estimate is different from zero. The Census Bureau recommends that individuals using estimates in this report incorporate the above information into their analyses, as sampling error could affect the conclusions drawn from the estimates.

Nonsampling error is the difference between the result that would be obtained from a complete enumeration of the sampling frame conducted under the same survey conditions and the population parameter of interest. Nonsampling error encompasses all other factors that contribute to the total error of a sample survey estimate. This type of error can occur because of nonresponse, insufficient coverage of the survey universe, mistakes in the recording and coding of data, model error, and other errors of collection, response, coverage, or processing. Though nonsampling error is not measured directly, the Census Bureau employs quality control procedures throughout the process to minimize this type of error.