

Denali Flight Advisory

Mt. McKinley, Denali National Park/Preserve/Wilderness Area

Posted on Wednesday, May 12, 1999

Updated with new NPS Denali website link on August 25, 2004

Updated with notice of new South Denali Freq 123.65 on September 12, 2005

New South Denali Frequency 123.65

DENALI FLIGHT ADVISORY

1. The Denali National Park/Wilderness/National Preserve areas are divided into two sectors, North and South, for Common Traffic Advisory Frequency (CTAF) deconfliction. The South area will use **123.65** and the North Area will use 122.725. The surrounding airports will use CTAF 122.9.

A detailed map, Denali Flight Advisory, at the end of this advisory, depicts the local checkpoints and is available through the National Park Service, PO Box 9, Denali National Park, AK 99755 or call 683-2294, fax (907) 683-9612. [Link to National Park Service Denali website \(click here\)](#)

2. The Denali Flight Advisory chart depicts the reporting points. When making a position report, give location, altitude, destination and/or direction of flight. Example: "Mountain Traffic, Cessna 1234, Ruth Icefall, 8000 feet, up glacier for the Amphitheater. "

3. **ALL AIRCRAFT SHOULD FLY WITH THEIR LIGHTS ON.**

4. **BE ALERT!** Climb early, stay high, especially over areas where landings and departures take place. Be sure your aircraft has the performance capability to operate in a high altitude mountainous environment. Stay to the right in the valleys and canyons. All turns should be to the left if possible. Obtain a current altimeter setting from the nearest facility.

5. Remember, Mt. McKinley makes its own weather. If the weather begins to deteriorate, leave immediately.

6. Your aircraft may have their radios turned down to talk to their passengers and therefore may miss a report.

ALWAYS presume that other aircraft may be in your area and might have missed your call.

7. Be sure you report the correct altitude you are flying in order to maximize separation and minimize the mid-air potential.

8. The National Park Service at Denali National Park and Preserve performs numerous rescues along the Alaska Range and on Mt. McKinley. Rescues are often performed using the high altitude Lama helicopter, fixed wing, and military aircraft. Please stay well away from rescue sites. Listen and obey airspace closures around rescue operations.

9. Be sure to brush up on your mountain flying techniques before flying in the Denali Park Area. There are many excellent books and pamphlets available. Consider reviewing your skills with a flight instructor.

10. **Alert:** Triple Lakes has the largest volume of traffic in July with an estimated aircraft crossings of 200 per day.

DENALI STATE PARK

Denali State Park borders the national park on its southeast corner between the Dutch Hills to the west and to the Susitna River on the east. The George Park Highway runs through the middle of the park. State requirements for aviators operating within the state park.

1. Landings of fixed wing aircraft in Denali State Park are permitted west of the Parks Highway and on Blair and Ermine Lakes. Landings are not permitted on Byers Lake and on Kesugi and Curry Ridges, which are all east of the highway.
2. Practice landings are not permitted.
3. Helicopters landings are restricted to five specific sites west of the highway.
4. For detailed information on these sites for planning purposes, please phone (907) 745-3975.

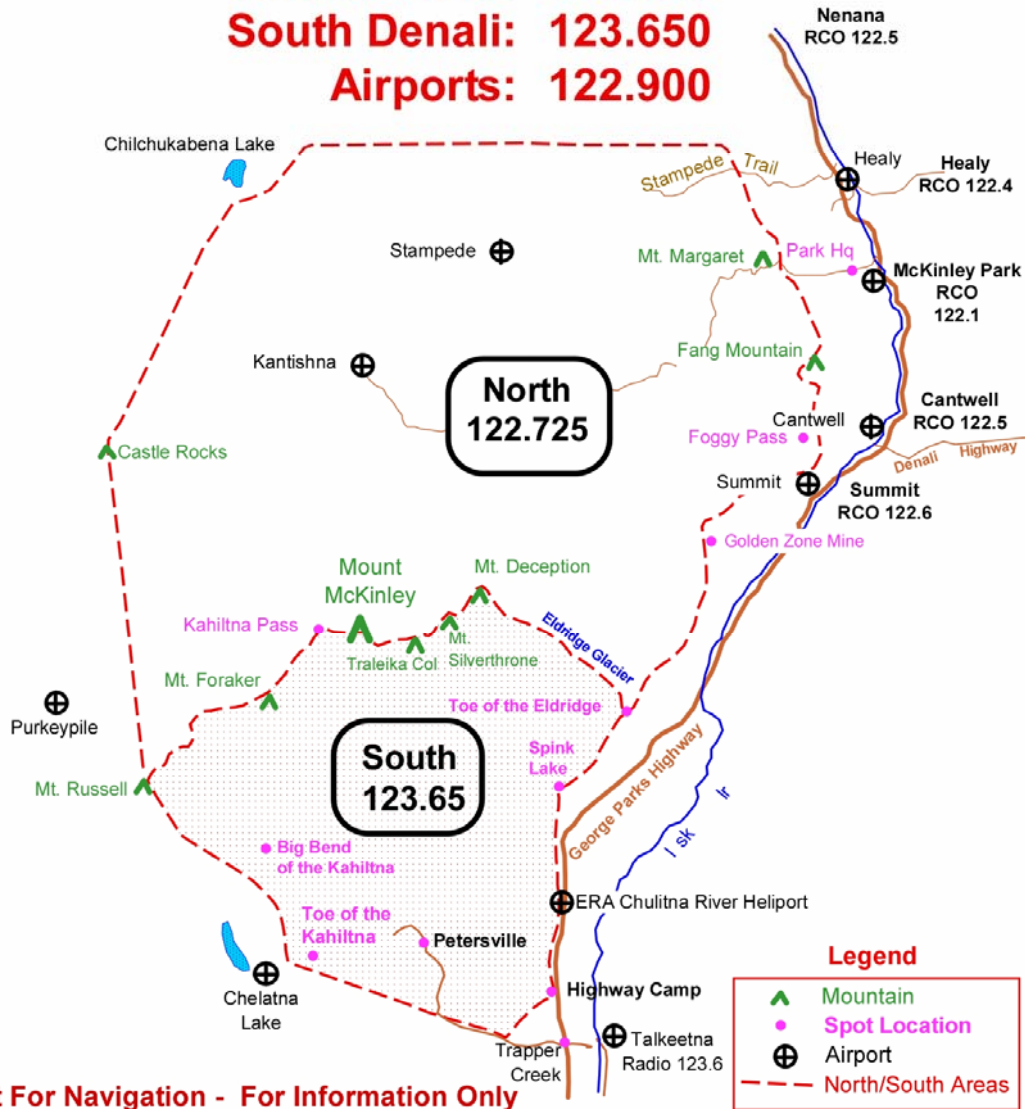
WAYPOINTS	NAD 83		WAYPOINTS	NAD 83	
	LAT	LONG		LAT	LONG
Alder Gap	62° 46' 21"	150° 31' 34"	North Hunter Pass	62° 57' 54"	151° 05' 08"
Alder Point	62° 44' 23"	150° 23' 02"	North Peters Hills	62° 34' 40"	150° 42' 58"
Anderson Pass	63° 17' 25"	150° 14' 02"	One Shot Gap	62° 48' 33"	151° 07' 42"
Backside Lake	62° 51' 27"	150° 41' 08"	Peters Basin	63° 06' 43"	151° 11' 18"
Base Camp	62° 58' 00"	151° 09' 55"	Peters Gap	62° 31' 27"	150° 48' 13"
Bend of the Muldrow	63° 17' 34"	150° 21' 16"	Pika Glacier/Little Switzerland	62° 42' 00"	151° 11' 55"
Bend of the Peters	63° 12' 01"	150° 57' 59"	Polychrome Pass	63° 30' 52"	149° 56' 12"
Between the Rivers	62° 26' 03"	150° 11' 15"	Refuge Valley	63° 30' 44"	149° 20' 18"
Big Bend, Kahiltna	62° 40' 18"	151° 23' 35"	Round Top	63° 31' 45"	149° 39' 57"
Big Bend of the Ruth	62° 46' 18"	150° 38' 32"	Ruth Amphitheater	62° 59' 58"	150° 42' 08"
Bunco Bump	62° 31' 22"	150° 26' 14"	Ruth Icefall	62° 52' 46"	150° 36' 41"
Bunco Lake	62° 32' 14"	150° 30' 40"	Saddle, Tokositna/Ruth	62° 46' 18"	150° 43' 04"
Byers Lake	62° 44' 21"	150° 06' 48"	Safari Lake	62° 27' 39"	150° 34' 11"
Cathedral Mountain	63° 34' 36"	149° 34' 23"	Scott Peak	63° 20' 40"	150° 07' 33"
Chelatna Lake	62° 29' 01"	151° 27' 36"	South Hunter Pass	62° 51' 52"	151° 06' 28"
Denai Creek	62° 37' 30"	149° 06' 40"	South Peters Hills	62° 26' 50"	150° 56' 24"
Divide Mountain	63° 29' 38"	150° 00' 08"	Spink Lake	62° 46' 51"	150° 14' 28"
Easy Pass	63° 22' 08"	149° 43' 01"	Swan Lake	62° 31' 21"	150° 23' 43"
Era Chulitna Heliport	62° 34' 05"	150° 14' 01"	Tluna Icefall	63° 08' 17"	151° 07' 32"
Foggy Pass	63° 24' 46"	149° 14' 00"	Toe of the Eldridge	62° 55' 16"	149° 56' 48"
Golden Zone Mine	63° 13' 06"	149° 38' 31"	Toe of the Kahiltna	62° 28' 53"	151° 11' 58"
Gunsight Pass	63° 12' 19"	150° 51' 04"	Toe of the Kanikula	62° 42' 05"	150° 54' 52"
Highway Camp	62° 24' 16"	150° 15' 31"	Toe of the Muldrow	63° 24' 27"	150° 32' 45"
Hillside	62° 38' 42"	150° 31' 01"	Toe of the Peters	63° 15' 52"	151° 00' 14"
Home Lake	62° 37' 13"	150° 37' 44"	Toe of the Ruth	62° 40' 08"	150° 25' 08"
Igloo	63° 11' 33"	149° 20' 41"	Toe of the Tokositna	62° 40' 18"	150° 46' 53"
Kahiltna Ice Falls	62° 54' 05"	151° 13' 14"	Tokosha Mountains	62° 42' 01"	150° 37' 59"
Kahiltna Pass	63° 04' 45"	151° 10' 26"	Traleika Col	63° 03' 56"	150° 46' 12"
Lower Tokat	63° 38' 19"	150° 06' 54"	Triple Crown	62° 45' 15"	151° 08' 54"

Moose Meadows	62° 35' 14"	150° 30' 56"	Triple Lakes	63° 39' 29"	148° 52' 34"
Moose's Tooth	62° 58' 09"	150° 36' 48"	Upper Riley	63° 31' 43"	149° 12' 45"
Mountain House	62° 58' 50"	150° 48' 08"	West Ridge of Hunter	62° 56' 23"	151° 11' 50"
Myrtle Pass	63° 34' 20"	150° 37' 25"	Wickersham Wall	63° 06' 43"	151° 03' 42"

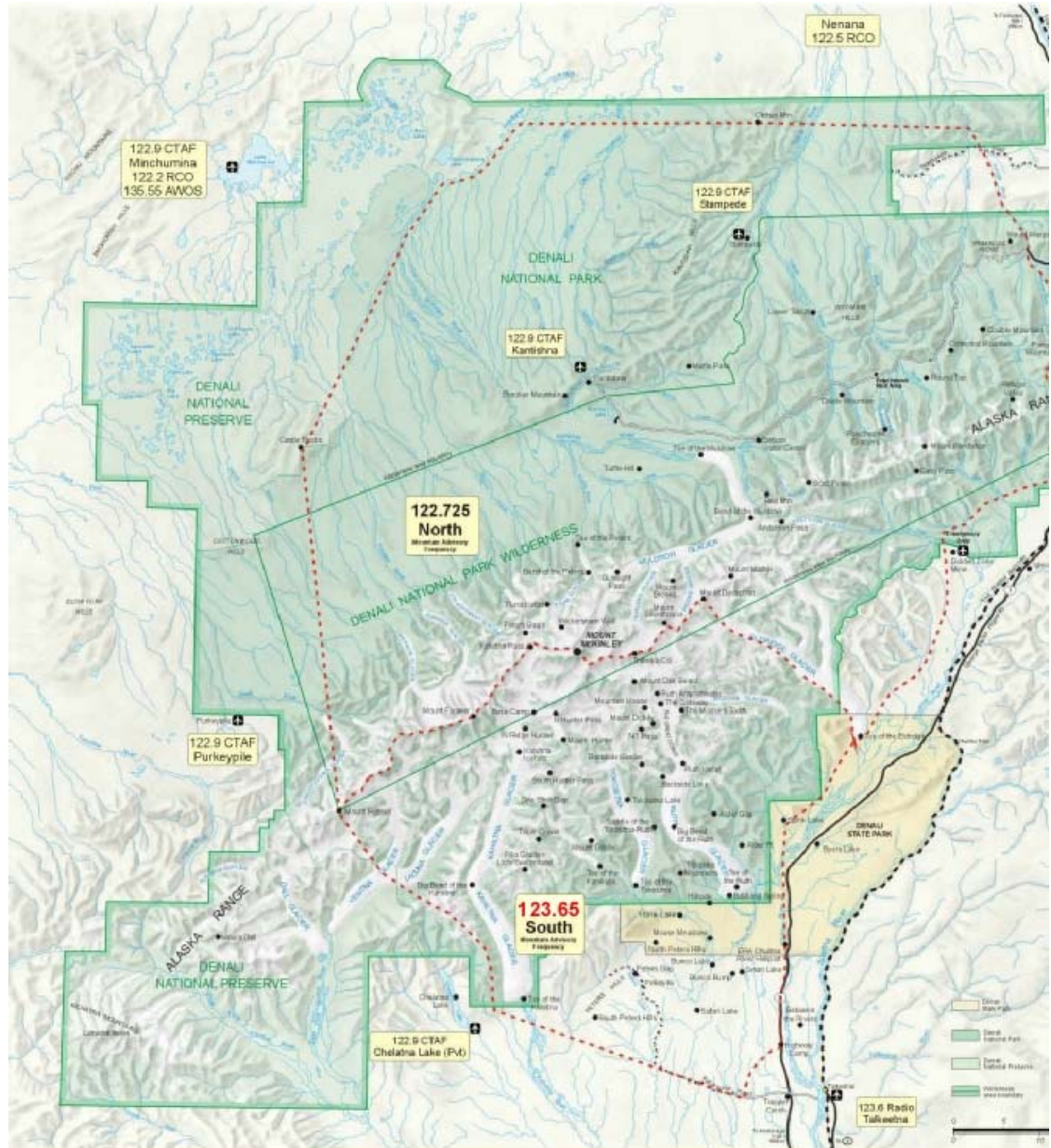
DENALI FLIGHT ADVISORY

Common Traffic Advisory Frequencies

North Denali: 122.725
South Denali: 123.650
Airports: 122.900



Not For Navigation - For Information Only



**DENALI NATIONAL PARK
FLIGHT ADVISORY MAP**

For Advisory Purposes Only
Not to Scale
Not to be used for Flight Planning Purposes