

The background is a dark blue gradient with a pattern of concentric circles and a grid of thin lines, creating a technical or analytical aesthetic.

# Alaska Accident Statistics September 2004

AAL-240

System Safety Analysis Branch

**FAA ALASKAN REGION  
MONTHLY AIRCRAFT ACCIDENT SUMMARY**

**September 2004**

Accident Comparison for the month of September

	2004	2003	September 5-YEAR		
			High	Low	Average
<b>General Aviation</b> (FAR Parts 91,133,137,125,129 & Public Use)	14	20	20	13	16.4
Fatal Accidents	1	1	1	0	0.4
Fatalities	2	3	3	0	1
<b>Air Carrier (FAR Part 135)</b>	4	2	4	1	2.8
Fatal Accidents	1	0	2	0	0.6
Fatalities	5	0	6	0	2.2
<b>Air Carrier (FAR Part 121)</b>	0	0	1	0	0.2
Fatal Accidents	0	0	0	0	0
Fatalities	0	0	0	0	0
<b>Total Accidents</b>	18	22	22	16	19.4
Fatal	2	1	2	0	1
Fatalities	7	3	7	0	3.2

This document is for comparison only. Totals frequently change due to reclassification.

## SUMMARY

### September 2004

---

For the month of September, there were 14 General Aviation (GA) accidents, compared with 20 in September 2003. The 5-year average for GA accidents during the month of September is 16.4 events. There was one fatal GA accident in September 2004, resulting in two fatalities. There was one fatal GA accidents in September 2003 resulting in three fatalities.

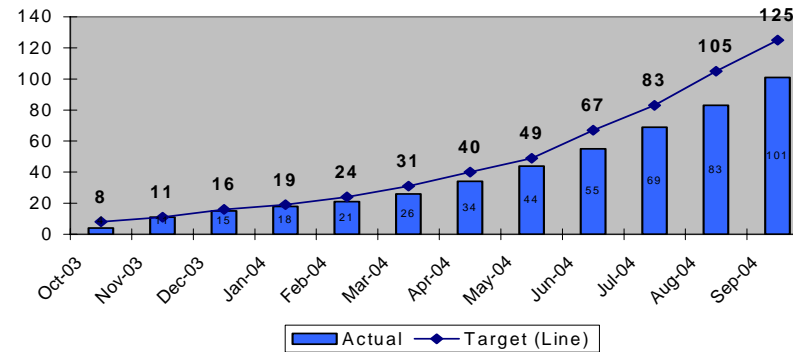
For the month of September, there were four FAR Part 135 Air Carrier accidents, compared with two in September of 2003. The 5-year average for FAR Part 135 Air Carrier accidents during the month of September is 2.8 events. There was one fatal FAR Part 135 Air Carrier accident for the month of September in 2004, resulting in five fatalities. (NOTE: This aircraft is still classified as missing). There were no fatal FAR Part 135 Air Carrier accidents in September 2003.

There were no FAR Part 121 events for the month of September in 2004 or 2003.

There were a total of 18 aircraft accidents during September 2004. This is compared with 22 in September 2003. The 5-year average for accidents during the month of September is 19.4 events. There were two fatal accidents for the month of September 2004, resulting in seven fatalities. There was one fatal event in September 2003 resulting in three fatalities.

**Note: Statistics contained in this report differ from past reports produced by the System Safety Analysis Branch. This is caused by frequent reclassifications of events by the National Transportation Safety Board.**

**Status of FAA Performance Targets  
Alaska GA & 135 Accidents  
Fiscal Year to Date  
Cumulative Total**



**Description**

Reduce accidents in Alaska for General Aviation and all Part 135 operations by 20% by Fiscal Year (FY) 2008 (from the 2000-2002 average of 130 accidents per year to no more than 104 accidents per year). (FY2004 target is no more than 125 accidents)

This chart indicates the monthly total of Alaskan accidents. The graph shows the cumulative number of Alaskan accidents versus the target.

	Actual	Target (Line)	Index Range
Oct-03	4	8	Green
Nov-03	11	11	Yellow
Dec-03	15	16	Green
Jan-04	18	19	Green
Feb-04	21	24	Green
Mar-04	26	31	Green
Apr-04	34	40	Green
May-04	44	49	Green
Jun-04	55	67	Green
Jul-04	69	83	Green
Aug-04	83	105	Green
Sep-04	101	125	Green

## GENERAL AVIATION TOTAL

Year	JAN	FEB	MAR	APR	MAY	JUN	JUL	AUG	SEP	OCT	NOV	DEC	TOTAL
94	3	5	4	3	8	10	13	23	15	4	2	7	97
95	4	0	8	8	9	26	23	28	17	11	4	4	142
96	2	0	11	18	12	11	13	19	26	5	1	1	119
97	6	5	15	15	11	13	10	16	18	4	0	2	115
98	2	3	8	6	14	21	22	16	23	4	2	2	123
99	2	2	8	9	10	15	17	23	21	2	3	2	114
<b>2000</b>	<b>0</b>	<b>4</b>	<b>3</b>	<b>11</b>	<b>9</b>	<b>17</b>	<b>11</b>	<b>14</b>	<b>18</b>	<b>9</b>	<b>3</b>	<b>6</b>	<b>105</b>
<b>2001</b>	<b>2</b>	<b>4</b>	<b>7</b>	<b>7</b>	<b>5</b>	<b>14</b>	<b>12</b>	<b>26</b>	<b>17</b>	<b>3</b>	<b>0</b>	<b>0</b>	<b>97</b>
<b>2002</b>	<b>1</b>	<b>2</b>	<b>5</b>	<b>2</b>	<b>8</b>	<b>19</b>	<b>12</b>	<b>20</b>	<b>13</b>	<b>8</b>	<b>3</b>	<b>6</b>	<b>99</b>
<b>2003</b>	<b>0</b>	<b>3</b>	<b>7</b>	<b>5</b>	<b>5</b>	<b>10</b>	<b>15</b>	<b>17</b>	<b>20</b>	<b>4</b>	<b>5</b>	<b>3</b>	<b>94</b>
<b>2004</b>	<b>2</b>	<b>2</b>	<b>4</b>	<b>6</b>	<b>8</b>	<b>10</b>	<b>11</b>	<b>11</b>	<b>14</b>				<b>68</b>
5 Yr.													
Ave.	1	3	5.2	6.2	7	14	12.2	17.6	16.4	5.2	2.8	3.4	101.8
MAX	2	4	7	11	9	19	15	26	20	9	5	6	114
MIN	0	2	3	2	5	10	11	11	13	2	0	0	94

**AAL-240**

**System Safety Analysis Branch**

## GENERAL AVIATION FATAL ACCIDENTS

Year	JAN	FEB	MAR	APR	MAY	JUN	JUL	AUG	SEP	OCT	NOV	DEC	TOTAL
94	1	1	0	0	0	1	0	3	2	0	0	0	8
95	0	0	0	1	2	3	4	4	2	0	0	0	16
96	0	0	0	1	1	1	2	3	4	1	0	0	13
97	0	2	3	3	0	1	0	1	2	1	0	0	13
98	0	0	0	1	2	1	3	1	1	0	0	0	9
99	0	0	0	0	2	1	0	5	0	0	0	0	8
<b>2000</b>	<b>0</b>	<b>0</b>	<b>0</b>	<b>0</b>	<b>1</b>	<b>2</b>	<b>2</b>	<b>2</b>	<b>0</b>	<b>1</b>	<b>0</b>	<b>2</b>	<b>10</b>
<b>2001</b>	<b>0</b>	<b>0</b>	<b>0</b>	<b>0</b>	<b>0</b>	<b>0</b>	<b>1</b>	<b>2</b>	<b>0</b>	<b>0</b>	<b>0</b>	<b>0</b>	<b>3</b>
<b>2002</b>	<b>0</b>	<b>0</b>	<b>1</b>	<b>1</b>	<b>1</b>	<b>2</b>	<b>1</b>	<b>3</b>	<b>0</b>	<b>0</b>	<b>0</b>	<b>1</b>	<b>10</b>
<b>2003</b>	<b>0</b>	<b>0</b>	<b>0</b>	<b>0</b>	<b>0</b>	<b>1</b>	<b>2</b>	<b>2</b>	<b>1</b>	<b>0</b>	<b>0</b>	<b>0</b>	<b>6</b>
<b>2004</b>	<b>0</b>	<b>0</b>	<b>0</b>	<b>0</b>	<b>1</b>	<b>1</b>	<b>2</b>	<b>3</b>	<b>1</b>				<b>8</b>
5 Yr.													
Ave	0	0	0.2	0.2	0.6	1.2	1.6	2.4	0.4	0.2	0	0.6	7.4
MAX	0	0	1	1	1	2	2	3	1	1	0	2	10
MIN	0	0	0	0	0	0	1	2	0	0	0	0	3

**AAI-240**

**System Safety Analysis Branch**

## GENERAL AVIATION FATALITIES

Year	JAN	FEB	MAR	APR	MAY	JUN	JUL	AUG	SEP	OCT	NOV	DEC	TOTAL
94	1	1	0	0	0	3	0	6	3	0	0	0	14
95	0	0	0	2	3	14	9	6	3	0	0	0	37
96	0	0	0	1	2	1	3	4	8	1	0	0	20
97	0	4	6	6	0	4	0	3	3	1	0	0	27
98	0	0	0	1	4	1	5	1	1	0	0	0	13
99	0	0	0	0	3	1	0	11	0	0	0	0	15
2000	0	0	0	0	1	2	2	4	0	1	0	4	14
2001	0	0	0	0	0	0	4	2	0	0	0	0	6
2002	0	0	1	1	2	2	2	5	0	0	0	1	14
2003	0	0	0	0	0	2	9	5	3	0	0	0	19
2004	0	0	0	0	1	1	8	4	2				16
<b>5 Yr.</b>													
<b>Ave</b>	0	0	0.2	0.2	0.8	1.4	5	4	1	0.2	0	1	13.6
<b>MAX</b>	0	0	1	1	2	2	9	5	3	1	0	4	19
<b>MIN</b>	0	0	0	0	0	0	2	2	0	0	0	0	6

AAL-240

System Safety Analysis Branch

## AIR CARRIER TOTAL (FAR 135)

Year	JAN	FEB	MAR	APR	MAY	JUN	JUL	AUG	SEP	OCT	NOV	DEC	TOTAL
94	0	1	1	2	1	2	8	8	3	1	3	4	34
95	2	2	4	0	4	3	4	3	2	0	2	3	29
96	0	0	3	2	3	2	4	7	7	1	2	3	34
97	2	2	2	6	1	2	7	5	7	2	2	1	39
98	1	4	0	3	6	5	2	3	8	4	0	3	39
99	3	1	2	7	0	5	1	3	5	6	1	4	38
<b>2000</b>	<b>1</b>	<b>4</b>	<b>4</b>	<b>1</b>	<b>2</b>	<b>2</b>	<b>1</b>	<b>3</b>	<b>4</b>	<b>2</b>	<b>3</b>	<b>1</b>	<b>28</b>
<b>2001</b>	<b>4</b>	<b>0</b>	<b>0</b>	<b>3</b>	<b>2</b>	<b>1</b>	<b>6</b>	<b>3</b>	<b>1</b>	<b>3</b>	<b>0</b>	<b>0</b>	<b>23</b>
<b>2002</b>	<b>1</b>	<b>4</b>	<b>3</b>	<b>1</b>	<b>1</b>	<b>8</b>	<b>4</b>	<b>8</b>	<b>3</b>	<b>2</b>	<b>1</b>	<b>0</b>	<b>36</b>
<b>2003</b>	<b>1</b>	<b>1</b>	<b>0</b>	<b>2</b>	<b>2</b>	<b>3</b>	<b>4</b>	<b>3</b>	<b>2</b>	<b>0</b>	<b>2</b>	<b>1</b>	<b>21</b>
<b>2004</b>	<b>1</b>	<b>1</b>	<b>1</b>	<b>2</b>	<b>2</b>	<b>1</b>	<b>2</b>	<b>3</b>	<b>4</b>				<b>17</b>
5 Yr. Ave.	1.6	2	1.6	1.8	1.8	3	3.4	4	2.8	2.6	1.4	1.2	29.2
MAX	4	4	4	3	2	8	6	8	4	6	3	4	38
MIN	1	0	0	1	1	1	1	3	1	0	0	0	21



## AIR CARRIER FATAL ACCIDENTS (FAR 135)

Year	JAN	FEB	MAR	APR	MAY	JUN	JUL	AUG	SEP	OCT	NOV	DEC	TOTAL
94	0	0	0	0	0	1	1	3	0	0	1	2	8
95	0	1	0	0	0	1	1	1	0	0	0	0	4
96	0	0	0	0	0	0	1	1	1	1	2	1	7
97	1	0	0	1	0	1	2	1	1	1	1	0	9
98	0	1	0	0	1	0	0	1	2	0	0	0	5
99	0	0	0	1	0	2	0	0	1	0	0	1	5
<b>2000</b>	<b>0</b>	<b>1</b>	<b>0</b>	<b>0</b>	<b>0</b>	<b>1</b>	<b>0</b>	<b>0</b>	<b>2</b>	<b>0</b>	<b>0</b>	<b>0</b>	<b>4</b>
<b>2001</b>	<b>1</b>	<b>0</b>	<b>0</b>	<b>0</b>	<b>0</b>	<b>0</b>	<b>2</b>	<b>0</b>	<b>0</b>	<b>2</b>	<b>0</b>	<b>0</b>	<b>5</b>
<b>2002</b>	<b>1</b>	<b>1</b>	<b>0</b>	<b>0</b>	<b>0</b>	<b>0</b>	<b>1</b>	<b>1</b>	<b>0</b>	<b>0</b>	<b>0</b>	<b>0</b>	<b>4</b>
<b>2003</b>	<b>0</b>	<b>0</b>	<b>0</b>	<b>0</b>	<b>1</b>	<b>1</b>	<b>1</b>	<b>1</b>	<b>0</b>	<b>0</b>	<b>0</b>	<b>0</b>	<b>4</b>
<b>2004</b>	<b>0</b>	<b>0</b>	<b>0</b>	<b>1</b>	<b>0</b>	<b>1</b>	<b>0</b>	<b>0</b>	<b>1</b>				<b>3</b>
5 Yr. Ave.	0.4	0.4	0	0.2	0.2	0.6	0.8	0.4	0.6	0.4	0	0.2	4.4
MAX	1	1	0	1	1	1	2	1	2	2	0	1	5
MIN	0	0	0	0	0	0	0	0	0	0	0	0	4

**AAL-240**

**System Safety Analysis Branch**

## AIR CARRIER FATALITIES (FAR 135)

Year	JAN	FEB	MAR	APR	MAY	JUN	JUL	AUG	SEP	OCT	NOV	DEC	TOTAL
94	0	0	0	0	0	7	3	12	0	0	1	6	29
95	0	1	0	0	0	4	6	2	0	0	0	0	13
96	0	0	0	0	0	0	1	2	3	3	3	1	13
97	1	0	0	5	0	2	8	1	1	2	8	0	28
98	0	1	0	0	2	0	0	1	6	0	0	0	10
99	0	0	0	1	0	8	0	0	1	0	0	6	16
<b>2000</b>	<b>0</b>	<b>6</b>	<b>0</b>	<b>0</b>	<b>0</b>	<b>4</b>	<b>0</b>	<b>0</b>	<b>6</b>	<b>0</b>	<b>0</b>	<b>2</b>	<b>18</b>
<b>2001</b>	<b>2</b>	<b>0</b>	<b>0</b>	<b>0</b>	<b>0</b>	<b>0</b>	<b>7</b>	<b>0</b>	<b>0</b>	<b>13</b>	<b>0</b>	<b>0</b>	<b>22</b>
<b>2002</b>	<b>1</b>	<b>1</b>	<b>0</b>	<b>0</b>	<b>0</b>	<b>0</b>	<b>4</b>	<b>2</b>	<b>0</b>	<b>0</b>	<b>0</b>	<b>0</b>	<b>8</b>
<b>2003</b>	<b>0</b>	<b>0</b>	<b>0</b>	<b>0</b>	<b>4</b>	<b>3</b>	<b>1</b>	<b>2</b>	<b>0</b>	<b>0</b>	<b>0</b>	<b>0</b>	<b>10</b>
<b>2004</b>	<b>0</b>	<b>0</b>	<b>0</b>	<b>1</b>	<b>0</b>	<b>1</b>	<b>0</b>	<b>0</b>	<b>5</b>				<b>7</b>
5 Yr. Ave.	0.6	1.4	0	0.2	0.8	1.6	2.4	0.8	2.2	2.6	0	1.6	14.8
MAX	2	6	0	1	4	4	7	2	6	13	0	6	22
MIN	0	0	0	0	0	0	0	0	0	0	0	0	8

## SUBTOTAL AK GOAL ACCIDENTS (GA & FAR 135)

Year	JAN	FEB	MAR	APR	MAY	JUN	JUL	AUG	SEP	OCT	NOV	DEC	TOTAL
94	3	6	5	5	9	12	20	33	17	5	5	11	131
95	6	2	12	8	13	29	27	30	19	11	6	7	171
96	2	0	14	20	15	12	18	24	33	6	3	4	153
97	8	7	16	20	12	15	18	24	33	7	2	3	154
98	4	7	8	10	19	26	24	21	32	8	2	5	162
99	5	3	10	16	11	20	17	26	<b>26</b>	<b>8</b>	<b>4</b>	<b>6</b>	<b>152</b>
<b>2000</b>	<b>1</b>	<b>8</b>	<b>7</b>	<b>12</b>	<b>11</b>	<b>18</b>	<b>12</b>	<b>17</b>	<b>22</b>	<b>12</b>	<b>6</b>	<b>6</b>	<b>133</b>
<b>2001</b>	<b>7</b>	<b>4</b>	<b>7</b>	<b>10</b>	<b>7</b>	<b>17</b>	<b>19</b>	<b>30</b>	<b>18</b>	<b>7</b>	<b>0</b>	<b>0</b>	<b>120</b>
<b>2002</b>	<b>2</b>	<b>6</b>	<b>8</b>	<b>3</b>	<b>11</b>	<b>27</b>	<b>16</b>	<b>24</b>	<b>16</b>	<b>9</b>	<b>4</b>	<b>7</b>	<b>135</b>
<b>2003</b>	<b>1</b>	<b>4</b>	<b>8</b>	<b>7</b>	<b>7</b>	<b>13</b>	<b>20</b>	<b>20</b>	<b>22</b>	<b>4</b>	<b>7</b>	<b>4</b>	<b>115</b>
<b>2004</b>	<b>3</b>	<b>3</b>	<b>5</b>	<b>8</b>	<b>10</b>	<b>11</b>	<b>13</b>	<b>14</b>	<b>18</b>				<b>85</b>
5 Yr. Ave.	2.8	5	7	8	9.2	17.2	16	21	19.2	8	4.2	4.6	131
MAX	7	8	8	12	11	27	20	30	22	12	7	7	152
MIN	1	3	5	3	7	11	12	14	16	4	0	0	115

**AAI-240**

**System Safety Analysis Branch**

## SUBTOTAL AK GOAL FATAL ACCIDENTS (GA & FAR 135)

Year	JAN	FEB	MAR	APR	MAY	JUN	JUL	AUG	SEP	OCT	NOV	DEC	TOTAL
94	1	1	0	0	0	2	1	6	2	0	1	2	16
95	0	1	0	1	2	4	5	5	2	0	0	0	20
96	0	0	0	1	1	1	3	4	5	2	2	1	20
97	1	2	3	4	0	2	2	2	3	2	1	0	22
98	0	1	0	1	3	1	3	2	3	0	0	0	14
99	0	0	0	1	2	3	0	5	1	0	0	1	13
<b>2000</b>	<b>0</b>	<b>1</b>	<b>0</b>	<b>0</b>	<b>1</b>	<b>3</b>	<b>2</b>	<b>2</b>	<b>2</b>	<b>1</b>	<b>0</b>	<b>2</b>	<b>14</b>
<b>2001</b>	<b>1</b>	<b>0</b>	<b>0</b>	<b>0</b>	<b>0</b>	<b>0</b>	<b>3</b>	<b>2</b>	<b>0</b>	<b>2</b>	<b>0</b>	<b>0</b>	<b>8</b>
<b>2002</b>	<b>1</b>	<b>1</b>	<b>1</b>	<b>1</b>	<b>1</b>	<b>2</b>	<b>2</b>	<b>4</b>	<b>0</b>	<b>0</b>	<b>0</b>	<b>1</b>	<b>14</b>
<b>2003</b>	<b>0</b>	<b>0</b>	<b>0</b>	<b>0</b>	<b>1</b>	<b>2</b>	<b>3</b>	<b>3</b>	<b>1</b>	<b>0</b>	<b>0</b>	<b>0</b>	<b>10</b>
<b>2004</b>	<b>0</b>	<b>0</b>	<b>0</b>	<b>1</b>	<b>1</b>	<b>2</b>	<b>2</b>	<b>3</b>	<b>2</b>				<b>11</b>
5 Yr. Ave.	0.4	0.4	0.2	0.4	0.8	1.8	2.4	2.8	1	0.6	0	0.8	11.8
MAX	1	1	1	1	1	3	3	4	2	2	0	2	14
MIN	0	0	0	0	0	0	2	2	0	0	0	0	8

**AAL-240**

**System Safety Analysis Branch**

## SUBTOTAL AK Goal FATALITIES (GA & FAR 135)

Year	JAN	FEB	MAR	APR	MAY	JUN	JUL	AUG	SEP	OCT	NOV	DEC	TOTAL
94	1	1	0	0	0	10	3	18	3	0	1	6	43
95	0	1	0	2	3	18	15	8	3	0	0	0	50
96	0	0	0	1	2	1	4	6	11	4	3	1	33
97	1	4	6	11	0	6	8	4	4	3	8	0	55
98	0	1	0	1	6	1	5	2	7	0	0	0	23
99	0	0	0	1	3	9	0	11	1	0	0	6	31
2000	0	6	0	0	1	6	2	4	6	1	0	6	32
2001	2	0	0	0	0	0	11	2	0	13	0	0	28
2002	1	1	1	1	2	2	6	7	0	0	0	1	22
2003	0	0	0	0	4	5	10	7	3	0	0	0	29
2004	0	0	0	1	1	2	8	4	7				23
5 Yr.													
Ave.	0.6	1.4	0.2	0.4	1.6	3	7.4	4.8	3.2	2.8	0	2.6	28.4
MAX	2	6	1	1	4	6	11	7	7	13	0	6	32
MIN	0	0	0	0	0	0	2	2	0	0	0	0	22

## AIR CARRIER TOTAL (FAR 121)

Year	JAN	FEB	MAR	APR	MAY	JUN	JUL	AUG	SEP	OCT	NOV	DEC	TOTAL
94	0	0	0	0	0	0	0	0	0	0	1	1	2
95	0	0	0	0	0	1	1	0	0	0	0	0	2
96	0	2	0	0	1	0	2	0	0	0	0	1	6
97	0	0	0	1	0	0	0	1	0	1	0	0	3
98	1	0	0	0	0	1	0	1	0	0	2	0	5
99	0	0	0	0	2	0	1	2	0	0	0	0	5
<b>2000</b>	<b>0</b>	<b>0</b>	<b>0</b>	<b>0</b>	<b>0</b>	<b>0</b>	<b>0</b>	<b>0</b>	<b>0</b>	<b>2</b>	<b>1</b>	<b>0</b>	<b>3</b>
<b>2001</b>	<b>1</b>	<b>0</b>	<b>0</b>	<b>0</b>	<b>0</b>	<b>0</b>	<b>1</b>	<b>1</b>	<b>1</b>	<b>0</b>	<b>0</b>	<b>1</b>	<b>5</b>
<b>2002</b>	<b>0</b>	<b>1</b>	<b>2</b>	<b>0</b>	<b>0</b>	<b>0</b>	<b>1</b>	<b>0</b>	<b>0</b>	<b>0</b>	<b>0</b>	<b>0</b>	<b>4</b>
<b>2003</b>	<b>1</b>	<b>0</b>	<b>1</b>	<b>1</b>	<b>0</b>	<b>0</b>	<b>0</b>	<b>0</b>	<b>0</b>	<b>0</b>	<b>0</b>	<b>0</b>	<b>3</b>
<b>2004</b>	<b>0</b>	<b>0</b>	<b>0</b>	<b>0</b>	<b>1</b>	<b>0</b>	<b>0</b>	<b>0</b>	<b>0</b>				<b>1</b>
5 Yr. Ave.	0.4	0.2	0.6	0.2	0.2	0	0.4	0.2	0.2	0.4	0.2	0.2	4
MAX	1	1	2	1	1	0	1	1	1	2	1	1	5
MIN	0	0	0	0	0	0	0	0	0	0	0	0	3

**AAL-240**

**System Safety Analysis Branch**

## AIR CARRIER FATAL ACCIDENTS (FAR 121)

Year	JAN	FEB	MAR	APR	MAY	JUN	JUL	AUG	SEP	OCT	NOV	DEC	TOTAL
94	0	0	0	0	0	0	0	0	0	0	0	0	0
95	0	0	0	0	0	0	0	0	0	0	0	0	0
96	0	0	0	0	0	0	2	0	0	0	0	0	2
97	0	0	0	0	0	0	0	0	0	0	0	0	0
98	0	0	0	0	0	0	0	0	0	0	0	0	0
99	0	0	0	0	1	0	0	0	0	0	0	0	1
<b>2000</b>	<b>0</b>	<b>0</b>	<b>0</b>	<b>0</b>	<b>0</b>	<b>0</b>	<b>0</b>	<b>0</b>	<b>0</b>	<b>0</b>	<b>0</b>	<b>0</b>	<b>0</b>
<b>2001</b>	<b>0</b>	<b>0</b>	<b>0</b>	<b>0</b>	<b>0</b>	<b>0</b>	<b>0</b>	<b>0</b>	<b>0</b>	<b>0</b>	<b>0</b>	<b>0</b>	<b>0</b>
<b>2002</b>	<b>0</b>	<b>0</b>	<b>0</b>	<b>0</b>	<b>0</b>	<b>0</b>	<b>0</b>	<b>0</b>	<b>0</b>	<b>0</b>	<b>0</b>	<b>0</b>	<b>0</b>
<b>2003</b>	<b>0</b>	<b>0</b>	<b>0</b>	<b>0</b>	<b>0</b>	<b>0</b>	<b>0</b>	<b>0</b>	<b>0</b>	<b>0</b>	<b>0</b>	<b>0</b>	<b>0</b>
<b>2004</b>	<b>0</b>	<b>0</b>	<b>0</b>	<b>0</b>	<b>0</b>	<b>0</b>	<b>0</b>	<b>0</b>	<b>0</b>	<b>0</b>	<b>0</b>	<b>0</b>	<b>0</b>
5 Yr. Ave.	0	0	0	0	0	0	0	0	0	0	0	0	0.2
MAX	0	0	0	0	0	0	0	0	0	0	0	0	1
MIN	0	0	0	0	0	0	0	0	0	0	0	0	0

## AIR CARRIER FATALITIES (FAR 121)

Year	JAN	FEB	MAR	APR	MAY	JUN	JUL	AUG	SEP	OCT	NOV	DEC	TOTAL
94	0	0	0	0	0	0	0	0	0	0	0	0	0
95	0	0	0	0	0	0	0	0	0	0	0	0	0
96	0	0	0	0	0	0	5	0	0	0	0	0	5
97	0	0	0	0	0	0	0	0	0	0	0	0	0
98	0	0	0	0	0	0	0	0	0	0	0	0	0
99	0	0	0	0	1	0	0	0	0	0	0	0	1
<b>2000</b>	<b>0</b>	<b>0</b>	<b>0</b>	<b>0</b>	<b>0</b>	<b>0</b>	<b>0</b>	<b>0</b>	<b>0</b>	<b>0</b>	<b>0</b>	<b>0</b>	<b>0</b>
<b>2001</b>	<b>0</b>	<b>0</b>	<b>0</b>	<b>0</b>	<b>0</b>	<b>0</b>	<b>0</b>	<b>0</b>	<b>0</b>	<b>0</b>	<b>0</b>	<b>0</b>	<b>0</b>
<b>2002</b>	<b>0</b>	<b>0</b>	<b>0</b>	<b>0</b>	<b>0</b>	<b>0</b>	<b>0</b>	<b>0</b>	<b>0</b>	<b>0</b>	<b>0</b>	<b>0</b>	<b>0</b>
<b>2003</b>	<b>0</b>	<b>0</b>	<b>0</b>	<b>0</b>	<b>0</b>	<b>0</b>	<b>0</b>	<b>0</b>	<b>0</b>	<b>0</b>	<b>0</b>	<b>0</b>	<b>0</b>
<b>2004</b>	<b>0</b>	<b>0</b>	<b>0</b>	<b>0</b>	<b>0</b>	<b>0</b>	<b>0</b>	<b>0</b>	<b>0</b>				<b>0</b>
5 Yr. Ave.	0	0	0	0	0	0	0	0	0	0	0	0	0.2
MAX	0	0	0	0	0	0	0	0	0	0	0	0	1
MIN	0	0	0	0	0	0	0	0	0	0	0	0	0

**AAL-240**

**System Safety Analysis Branch**



## TOTAL ACCIDENTS All Events

Year	JAN	FEB	MAR	APR	MAY	JUN	JUL	AUG	SEP	OCT	NOV	DEC	TOTAL
94	3	6	5	5	9	12	21	31	18	5	6	12	133
95	6	2	12	8	13	30	28	31	19	11	6	7	173
96	2	2	14	20	16	13	19	26	33	6	3	5	159
97	8	7	17	22	12	15	17	22	25	7	2	3	157
98	4	7	8	9	20	27	24	20	31	8	4	5	167
99	5	3	10	16	12	20	19	28	<b>26</b>	<b>8</b>	<b>4</b>	<b>6</b>	<b>157</b>
<b>2000</b>	<b>1</b>	<b>8</b>	<b>7</b>	<b>12</b>	<b>11</b>	<b>19</b>	<b>12</b>	<b>17</b>	<b>22</b>	<b>13</b>	<b>7</b>	<b>7</b>	<b>136</b>
<b>2001</b>	<b>7</b>	<b>4</b>	<b>7</b>	<b>10</b>	<b>7</b>	<b>15</b>	<b>19</b>	<b>30</b>	<b>19</b>	<b>6</b>	<b>0</b>	<b>1</b>	<b>125</b>
<b>2002</b>	<b>2</b>	<b>7</b>	<b>10</b>	<b>3</b>	<b>9</b>	<b>27</b>	<b>17</b>	<b>28</b>	<b>16</b>	<b>10</b>	<b>4</b>	<b>6</b>	<b>139</b>
<b>2003</b>	<b>2</b>	<b>4</b>	<b>8</b>	<b>8</b>	<b>7</b>	<b>13</b>	<b>19</b>	<b>20</b>	<b>22</b>	<b>4</b>	<b>7</b>	<b>4</b>	<b>118</b>
<b>2004</b>	<b>3</b>	<b>3</b>	<b>5</b>	<b>8</b>	<b>11</b>	<b>11</b>	<b>13</b>	<b>14</b>	<b>18</b>				<b>86</b>
5 Yr.													
Ave.	3	5.2	7.4	8.2	9	17	16	21.8	19.4	8.2	4.4	4.8	135
MAX	7	8	10	12	11	27	19	30	22	13	7	7	157
MIN	1	3	5	3	7	11	12	14	16	4	0	1	118

**AAI-240**

**System Safety Analysis Branch**

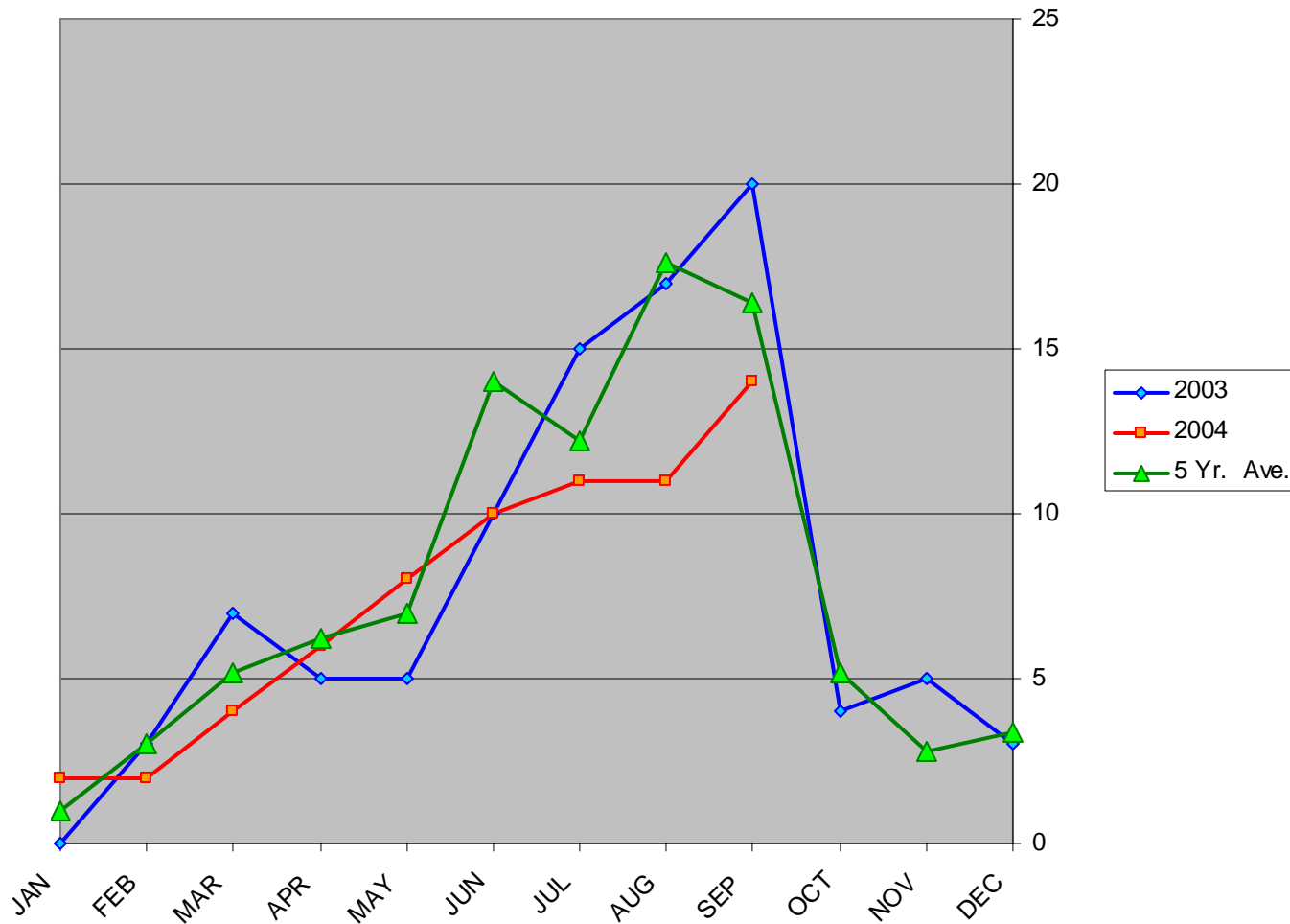
## TOTAL FATAL ACCIDENTS All Events

Year	JAN	FEB	MAR	APR	MAY	JUN	JUL	AUG	SEP	OCT	NOV	DEC	TOTAL
94	1	1	0	0	0	2	1	6	2	0	1	2	16
95	0	1	0	1	2	4	5	5	2	0	0	0	20
96	0	0	0	1	1	1	5	4	5	2	2	1	22
97	1	2	3	4	0	2	2	2	3	2	1	0	22
98	0	1	0	1	3	1	3	2	3	0	0	0	14
99	0	0	0	1	3	3	0	5	1	0	0	1	14
<b>2000</b>	<b>0</b>	<b>1</b>	<b>0</b>	<b>0</b>	<b>1</b>	<b>3</b>	<b>2</b>	<b>2</b>	<b>2</b>	<b>1</b>	<b>0</b>	<b>2</b>	<b>14</b>
<b>2001</b>	<b>1</b>	<b>0</b>	<b>0</b>	<b>0</b>	<b>0</b>	<b>0</b>	<b>3</b>	<b>2</b>	<b>0</b>	<b>2</b>	<b>0</b>	<b>0</b>	<b>8</b>
<b>2002</b>	<b>1</b>	<b>1</b>	<b>1</b>	<b>1</b>	<b>1</b>	<b>2</b>	<b>2</b>	<b>4</b>	<b>0</b>	<b>0</b>	<b>0</b>	<b>1</b>	<b>14</b>
<b>2003</b>	<b>0</b>	<b>0</b>	<b>0</b>	<b>0</b>	<b>1</b>	<b>2</b>	<b>3</b>	<b>3</b>	<b>1</b>	<b>0</b>	<b>0</b>	<b>0</b>	<b>10</b>
<b>2004</b>	<b>0</b>	<b>0</b>	<b>0</b>	<b>1</b>	<b>1</b>	<b>2</b>	<b>2</b>	<b>3</b>	<b>2</b>				<b>11</b>
5 Yr. Ave.	0.4	0.4	0.2	0.4	0.8	1.8	2.4	2.8	1	0.6	0	0.8	12
MAX	1	1	1	1	1	3	3	4	2	2	0	2	14
MIN	0	0	0	0	0	0	2	2	0	0	0	0	8

## TOTAL FATALITIES (All Events)

Year	JAN	FEB	MAR	APR	MAY	JUN	JUL	AUG	SEP	OCT	NOV	DEC	TOTAL
94	1	1	0	0	0	10	3	18	3	0	1	6	43
95	0	1	0	2	3	18	15	8	3	0	0	0	50
96	0	0	0	1	2	1	9	6	11	4	3	1	38
97	1	4	6	11	0	6	8	4	4	3	8	0	55
98	0	1	0	1	6	1	5	2	7	0	0	0	23
99	0	0	0	1	4	9	0	11	1	0	0	6	32
<b>2000</b>	<b>0</b>	<b>6</b>	<b>0</b>	<b>0</b>	<b>1</b>	<b>6</b>	<b>2</b>	<b>4</b>	<b>6</b>	<b>1</b>	<b>0</b>	<b>6</b>	<b>32</b>
<b>2001</b>	<b>2</b>	<b>0</b>	<b>0</b>	<b>0</b>	<b>0</b>	<b>0</b>	<b>11</b>	<b>2</b>	<b>0</b>	<b>13</b>	<b>0</b>	<b>0</b>	<b>28</b>
<b>2002</b>	<b>1</b>	<b>1</b>	<b>1</b>	<b>1</b>	<b>2</b>	<b>2</b>	<b>6</b>	<b>7</b>	<b>0</b>	<b>0</b>	<b>0</b>	<b>1</b>	<b>22</b>
<b>2003</b>	<b>0</b>	<b>0</b>	<b>0</b>	<b>0</b>	<b>4</b>	<b>5</b>	<b>10</b>	<b>7</b>	<b>3</b>	<b>0</b>	<b>0</b>	<b>0</b>	<b>29</b>
<b>2004</b>	<b>0</b>	<b>0</b>	<b>0</b>	<b>1</b>	<b>1</b>	<b>2</b>	<b>8</b>	<b>4</b>	<b>7</b>				<b>23</b>
5 Yr. Ave.	0.6	1.4	0.2	0.4	1.6	3	7.4	4.8	3.2	2.8	0	2.6	28.6
MAX	2	6	1	1	4	6	11	7	7	13	0	6	32
MIN	0	0	0	0	0	0	2	2	0	0	0	0	22

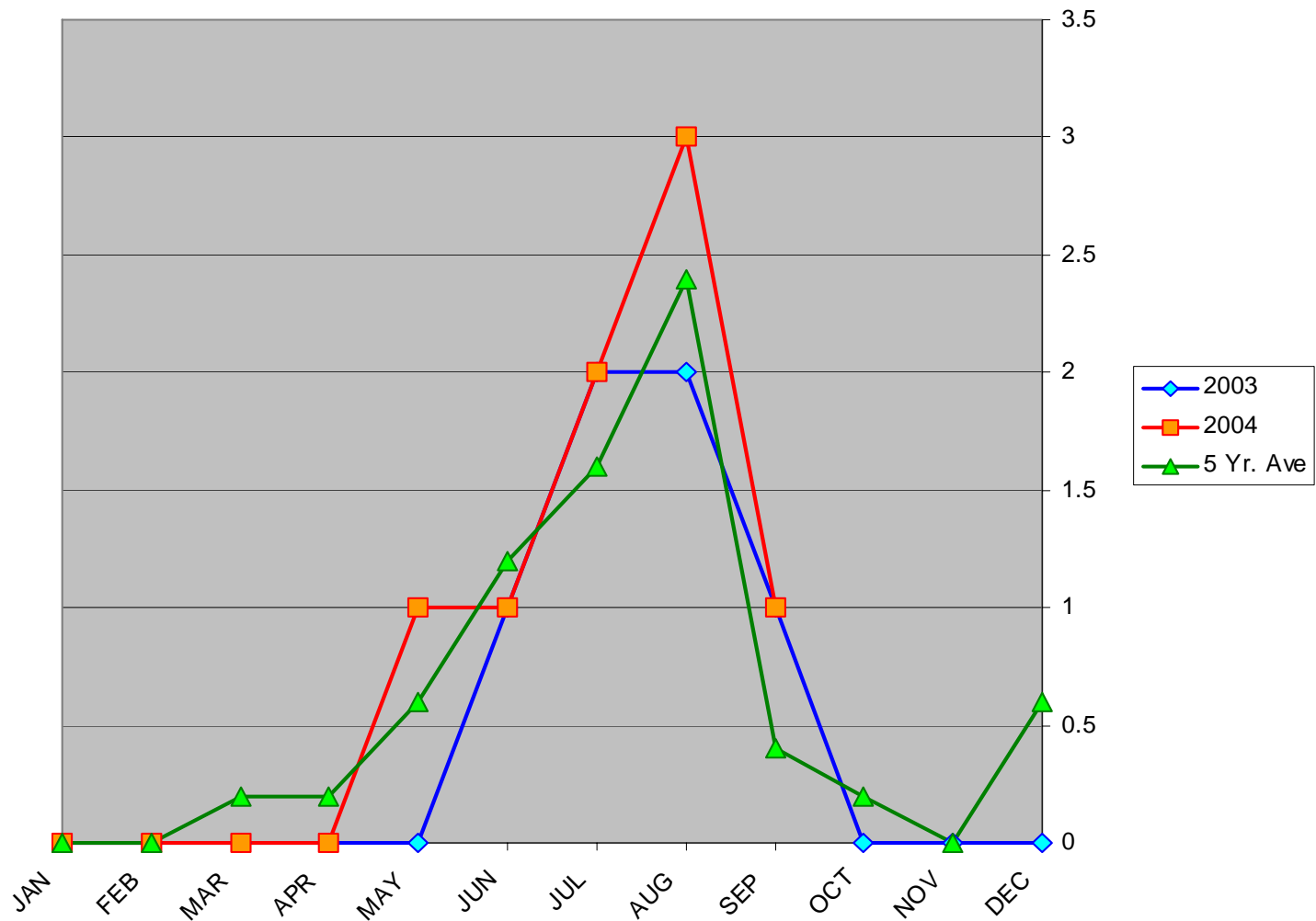
## General Aviation Accidents in Alaska



AAL-240

System Safety Analysis Branch

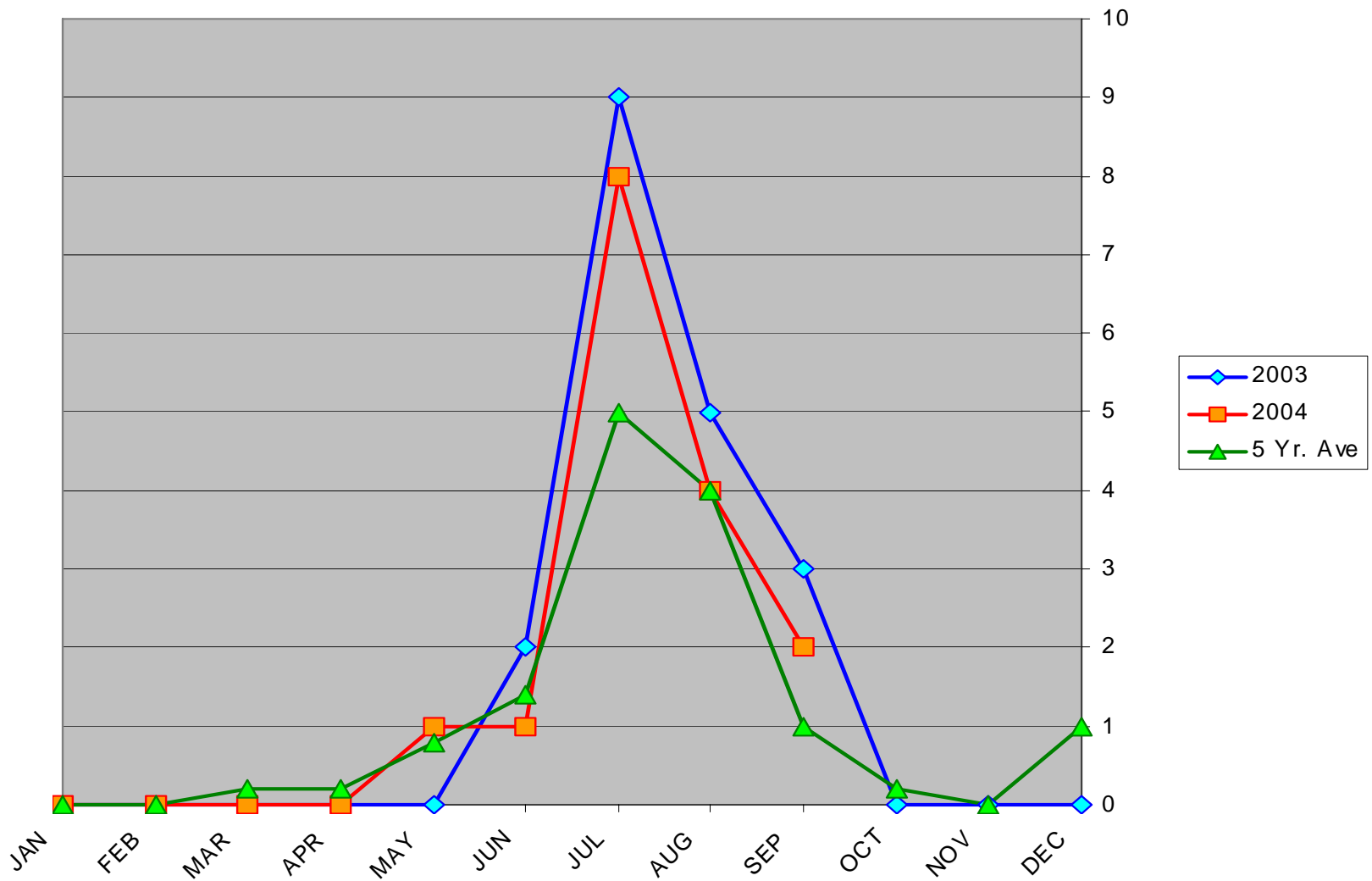
## General Aviation Fatal Accidents in Alaska



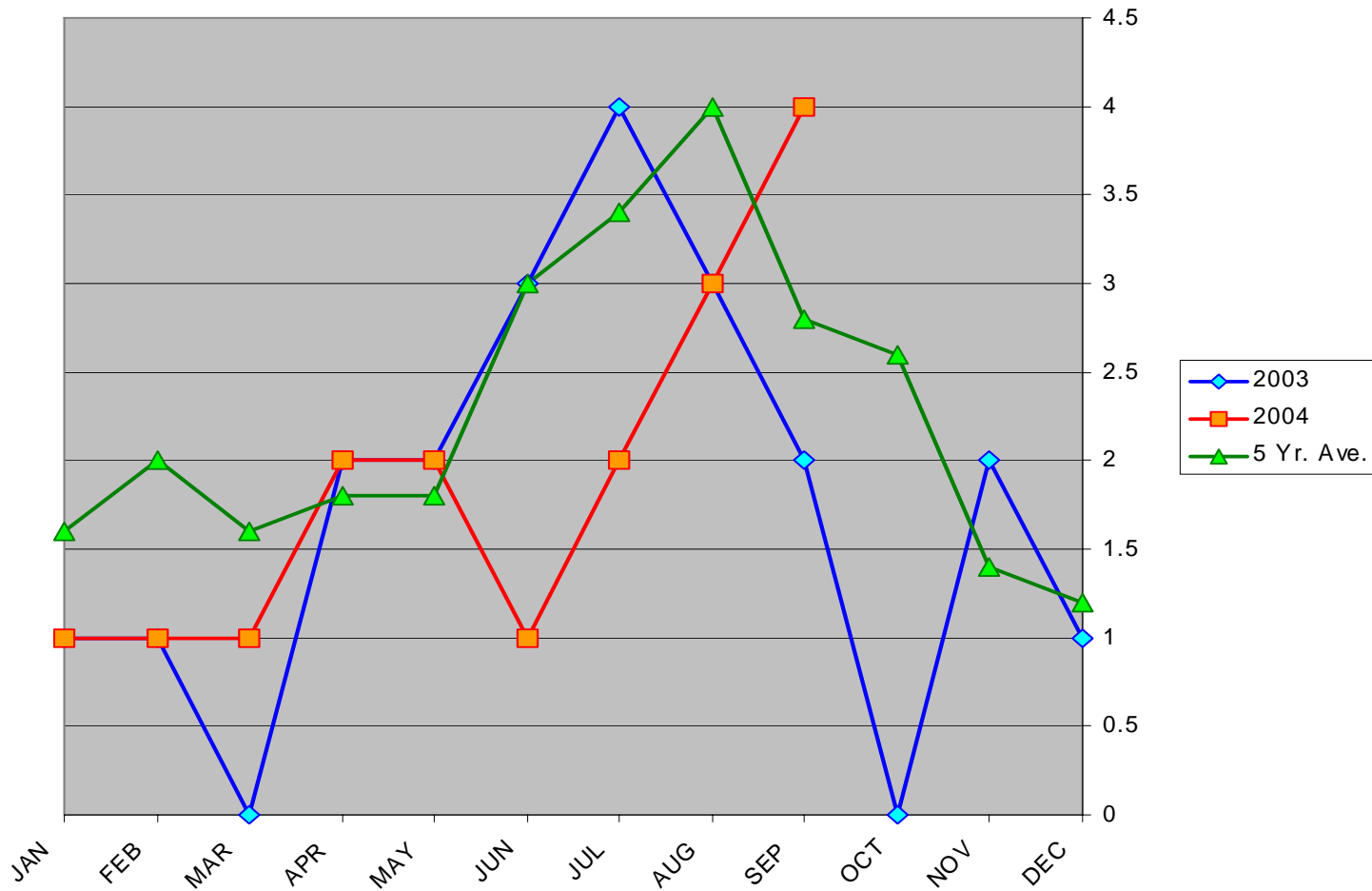
AAL-240

System Safety Analysis Branch

# General Aviation Fatalities in Alaska



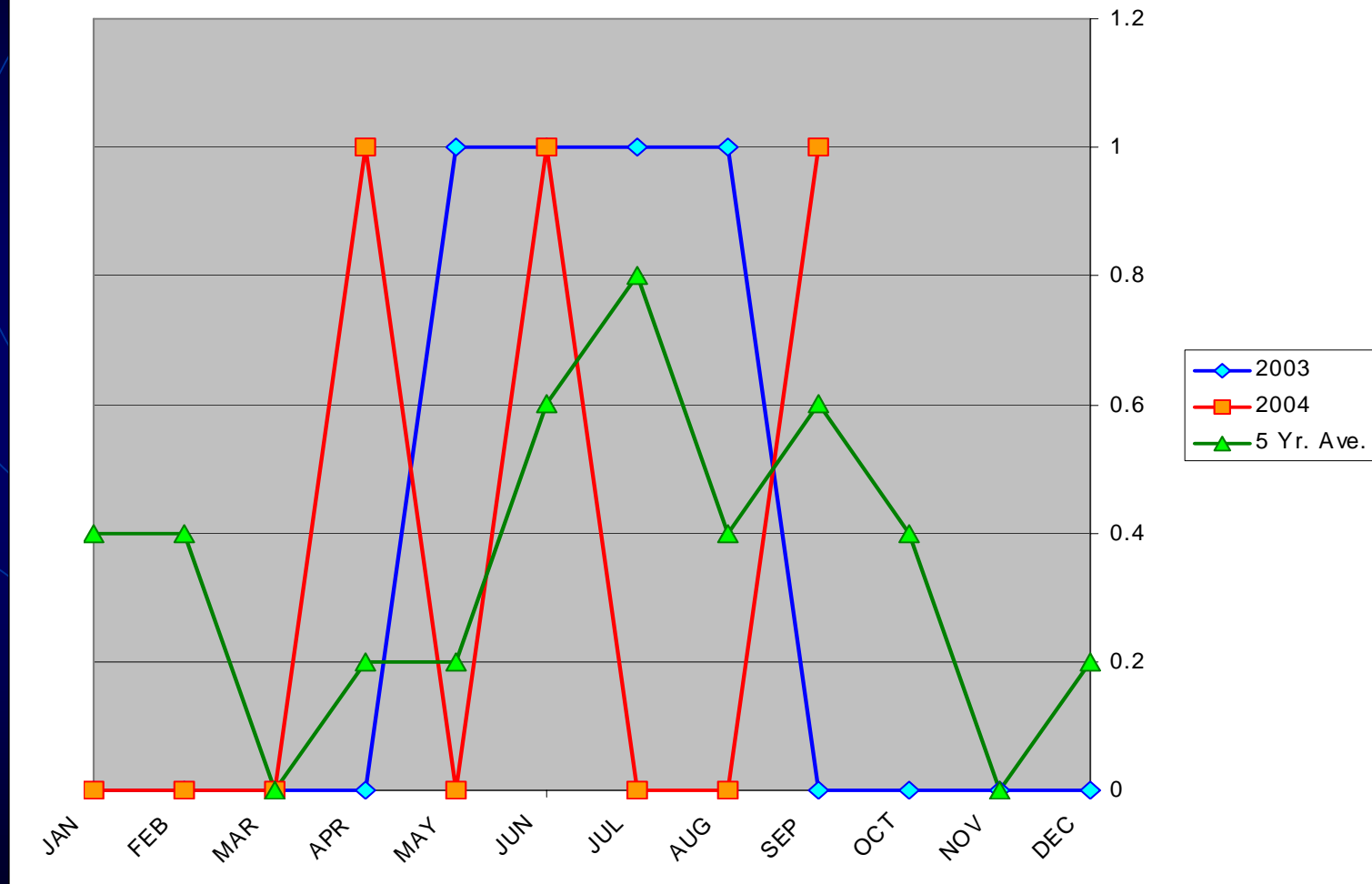
## Air Carrier (Part 135) Accidents in Alaska



AAL-240

System Safety Analysis Branch

## Air Carrier (FAR 135) Fatal Accidents in Alaska

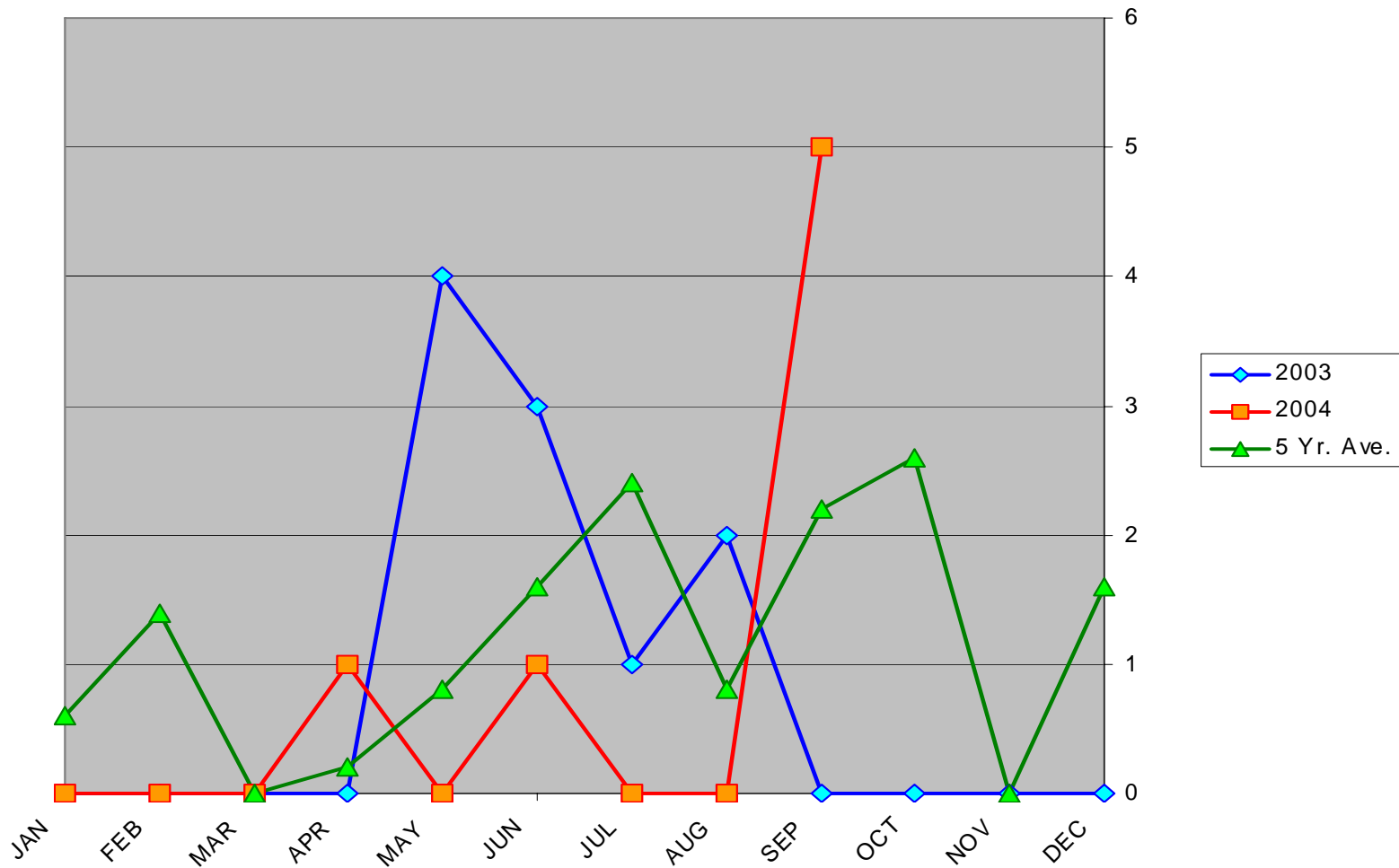


**AAI-240**

**System Safety Analysis Branch**



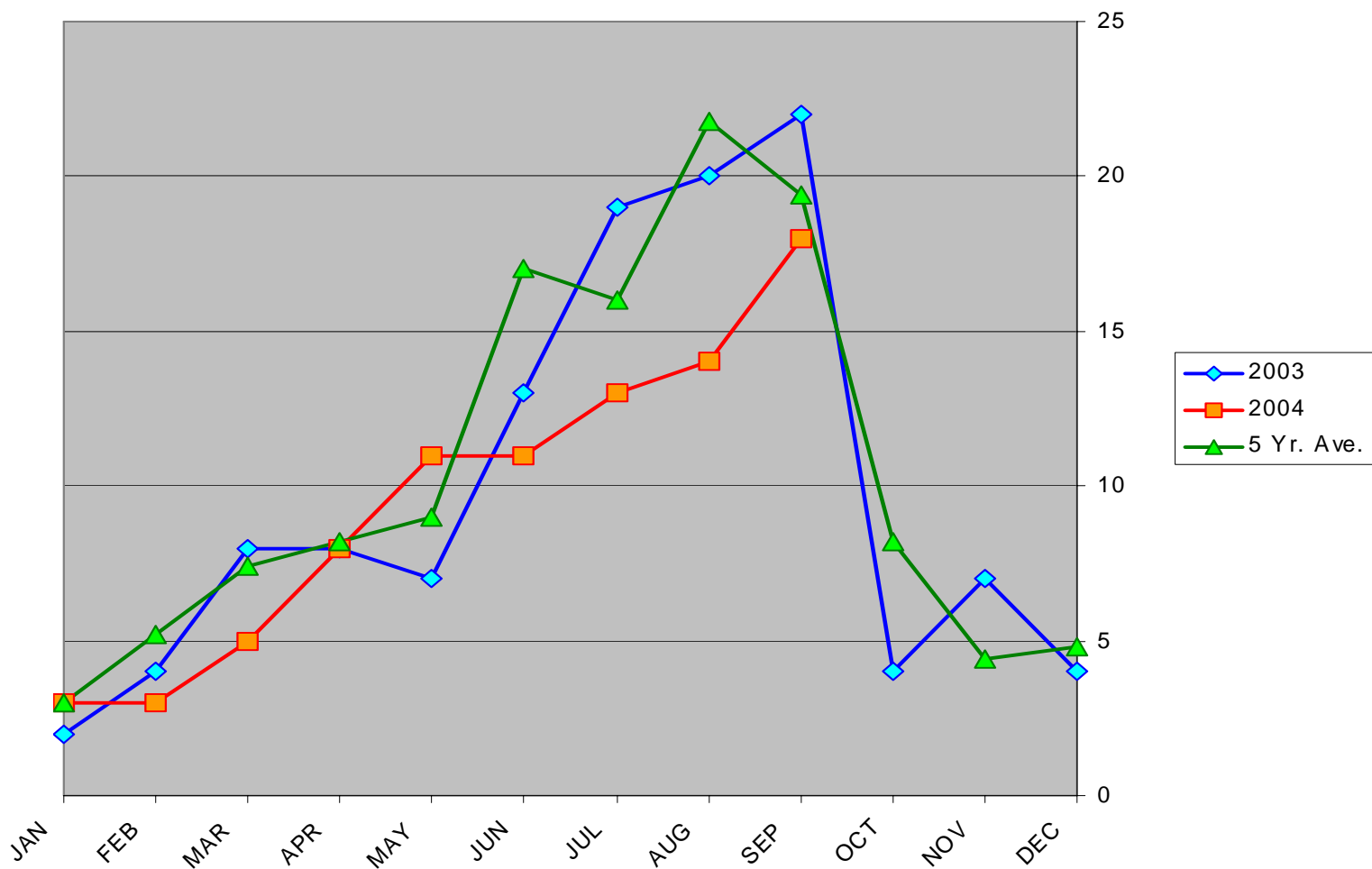
## Air Carrier (FAR 135) Fatalities in Alaska



AAL-240

System Safety Analysis Branch

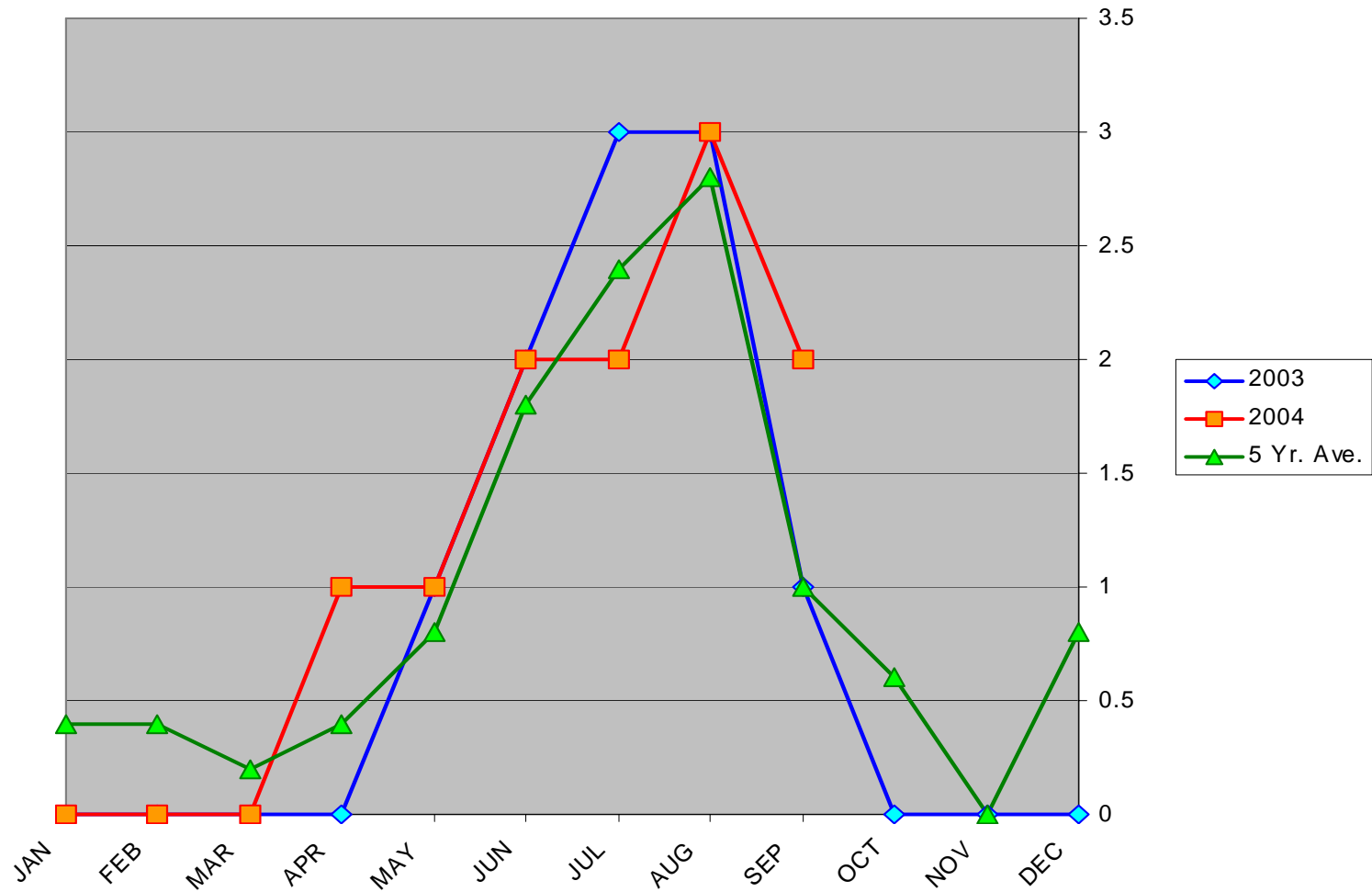
# Total Accidents in Alaska



AAL-240

System Safety Analysis Branch

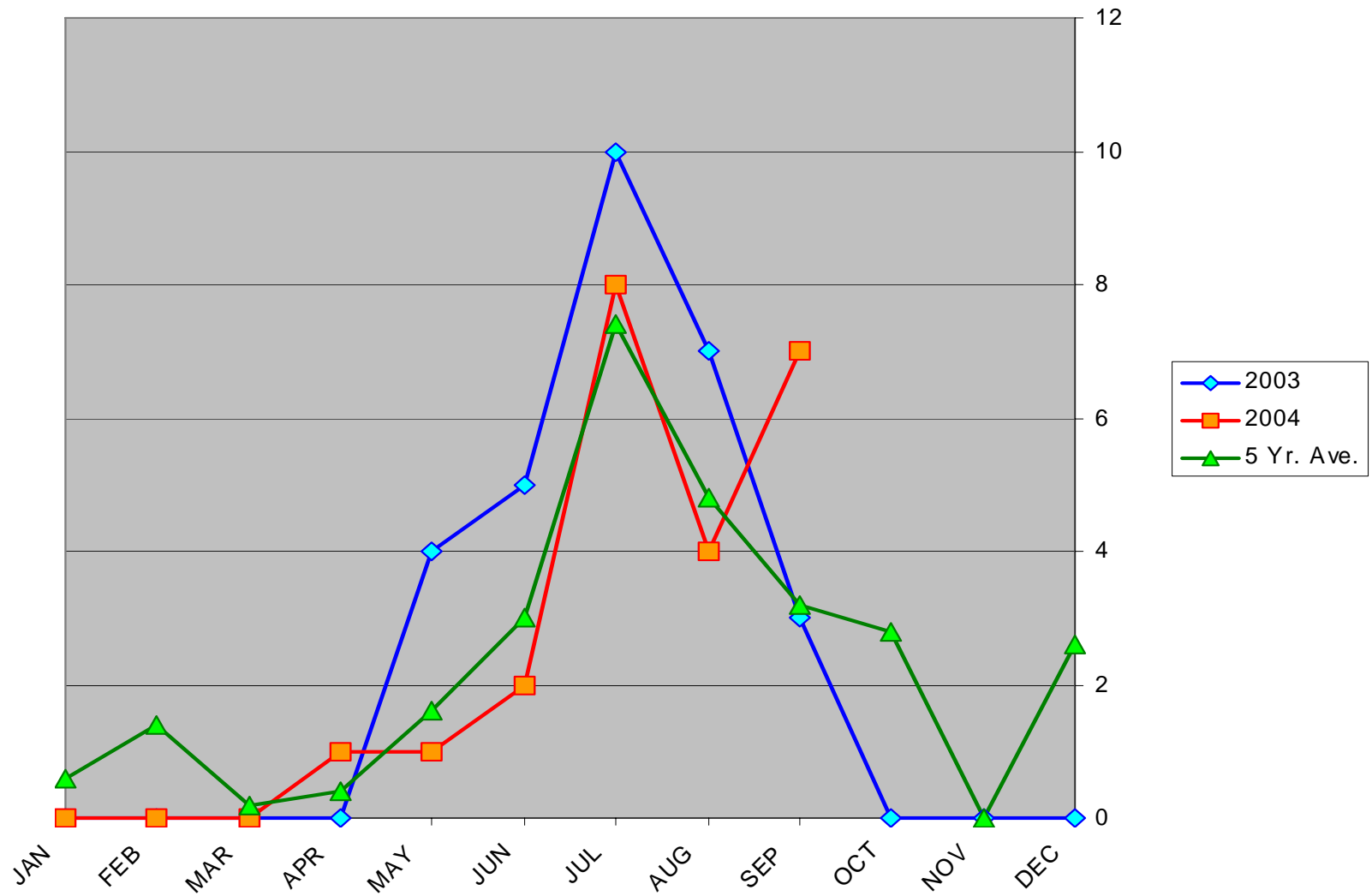
## Total Fatal Accidents in Alaska



AAL-240

System Safety Analysis Branch

# Total Fatalities in Alaska



AAL-240

System Safety Analysis Branch