

The background is a dark blue gradient with a pattern of concentric circles and a grid of thin lines. The text is centered and white.

Alaska Accident Statistics

October 2004

AAL-240

System Safety Analysis Branch

**FAA ALASKAN REGION
MONTHLY AIRCRAFT ACCIDENT SUMMARY**

October 2004

Accident Comparison for the month of October

	2004	2003	October 5-YEAR		
			High	Low	Average
General Aviation (FAR Parts 91,133,137,125,129 & Public Use)	11	4	11	3	7
Fatal Accidents	1	0	1	0	0.4
Fatalities	1	0	1	0	0.4
Air Carrier (FAR Part 135)	2	0	3	0	1.8
Fatal Accidents	0	0	2	0	0.4
Fatalities	0	0	13	0	2.6
Air Carrier (FAR Part 121)	0	0	2	0	0.4
Fatal Accidents	0	0	0	0	0
Fatalities	0	0	0	0	0
Total Accidents	13	4	13	4	9.2
Fatal	1	0	2	0	0.8
Fatalities	1	0	13	0	3

This document is for comparison only. Totals frequently change due to reclassification.

SUMMARY

October 2004

For the month of October, there were 11 General Aviation (GA) accidents, compared with four in October 2003. The 5-year average for GA accidents during the month of October is seven events. There was one fatal GA accident in October 2004, resulting in one fatality. There were no fatal GA accidents in October 2003.

For the month of October, there were two FAR Part 135 Air Carrier accidents, compared with none in October of 2003. The 5-year average for FAR Part 135 Air Carrier accidents during the month of October is 1.8 events. There were no fatal FAR Part 135 Air Carrier accident for the month of October in 2003 or 2004.

There were no FAR Part 121 events for the month of October in 2004 or 2003.

There were a total of 13 aircraft accidents during October 2004. This is compared with four in October 2003. The 5-year average for accidents during the month of October is 9.2 events. There was one fatal accident for the month of October 2004, resulting in one fatality. There were no fatal events in October 2003.

Note: Statistics contained in this report may differ from past reports produced by the System Safety Analysis Branch. This is caused by frequent reclassifications of events by the National Transportation Safety Board. The format of this report has been modified to display statistics by fiscal year instead of calendar year.



Description

Reduce accidents in Alaska for General Aviation and all Part 135 operations by 20% by Fiscal Year (FY) 2008 (from the 2000-2002 average of 130 accidents per year to no more than 104 accidents per year). (FY2004 target is no more than 125 accidents)

This chart indicates the monthly total of Alaskan accidents. The graph shows the cumulative number of Alaskan accidents versus the target.

	Actual	Target (Line)	Index Range
Oct-04	13	8	Red
Nov-04		12	
Dec-04		17	
Jan-05		20	
Feb-05		25	
Mar-05		32	
Apr-05		40	
May-05		49	
Jun-05		66	
Jul-05		82	
Aug-05		102	
Sep-05		120	

GENERAL AVIATION TOTAL

FY	OCT	NOV	DEC	JAN	FEB	MAR	APR	MAY	JUN	JUL	AUG	SEP	TOTAL
95	4	2	7	4	0	8	8	9	26	23	28	17	136
96	11	4	4	2	0	11	18	12	11	13	19	26	131
97	5	1	1	6	5	15	15	11	13	10	16	18	116
98	4	0	2	2	3	8	6	14	21	22	16	23	121
99	4	2	2	2	2	8	9	10	15	17	23	21	115
2000	2	3	2	0	4	3	11	9	17	11	14	18	94
2001	9	3	6	2	4	7	7	5	14	12	26	17	112
2002	3	0	0	1	2	5	2	8	19	12	20	13	85
2003	8	3	6	0	3	7	5	5	10	15	17	20	99
2004	4	5	3	2	2	4	6	8	10	11	11	14	80
2005	11												11
5 Yr. Ave.	7	2.8	3.4	1	3	5.2	6.2	7	14	12.2	17.6	16.4	94
MAX	11	5	6	2	4	7	11	9	19	15	26	20	112
MIN	3	0	0	0	2	3	2	5	10	11	11	13	80

GENERAL AVIATION FATAL ACCIDENTS

FY	OCT	NOV	DEC	JAN	FEB	MAR	APR	MAY	JUN	JUL	AUG	SEP	TOTAL
95	0	0	0	0	0	0	1	2	3	4	4	2	16
96	0	0	0	0	0	0	1	1	1	2	3	4	12
97	1	0	0	0	2	3	3	0	1	0	1	2	13
98	1	0	0	0	0	0	1	2	1	3	1	1	10
99	0	0	0	0	0	0	0	2	1	0	5	0	8
2000	0	0	0	0	0	0	0	1	2	2	2	0	7
2001	1	0	2	0	0	0	0	0	0	1	2	0	6
2002	0	0	0	0	0	1	1	1	2	1	3	0	9
2003	0	0	1	0	0	0	0	0	1	2	2	1	7
2004	0	0	0	0	0	0	0	1	1	2	3	1	8
2005	1												1
5 Yr. Ave	0.4	0	0.6	0	0	0.2	0.2	0.6	1.2	1.6	2.4	0.4	7.4
MAX	1	0	2	0	0	1	1	1	2	2	3	1	9
MIN	0	0	0	0	0	0	0	0	0	1	2	0	6

GENERAL AVIATION FATALITIES

FY	OCT	NOV	DEC	JAN	FEB	MAR	APR	MAY	JUN	JUL	AUG	SEP	TOTAL
95	0	0	0	0	0	0	2	3	14	9	6	3	37
96	0	0	0	0	0	0	1	2	1	3	4	8	19
97	1	0	0	0	4	6	6	0	4	0	3	3	27
98	1	0	0	0	0	0	1	4	1	5	1	1	14
99	0	0	0	0	0	0	0	3	1	0	11	0	15
2000	0	0	0	0	0	0	0	1	2	2	4	0	9
2001	1	0	4	0	0	0	0	0	0	4	2	0	11
2002	0	0	0	0	0	1	1	2	2	2	5	0	13
2003	0	0	1	0	0	0	0	0	2	9	5	3	20
2004	0	0	0	0	0	0	0	1	1	8	4	2	16
2005	1												1
5 Yr.													
Ave	0.4	0	1	0	0	0.2	0.2	0.8	1.4	5	4	1	13.8
MAX	1	0	4	0	0	1	1	2	2	9	5	3	20
MIN	0	0	0	0	0	0	0	0	0	2	2	0	9

AAL-240

System Safety Analysis Branch

AIR CARRIER TOTAL (FAR 135)

FY	OCT	NOV	DEC	JAN	FEB	MAR	APR	MAY	JUN	JUL	AUG	SEP	TOTAL
95	1	3	4	2	2	4	0	4	3	4	3	2	32
96	0	2	3	0	0	3	2	3	2	4	7	7	33
97	1	2	3	2	2	2	6	1	2	7	5	7	40
98	2	2	1	1	4	0	3	6	5	2	3	8	37
99	4	0	3	3	1	2	7	0	5	1	3	5	34
2000	6	1	4	1	4	4	1	2	2	1	3	4	33
2001	2	3	1	4	0	0	3	2	1	6	3	1	26
2002	3	0	0	1	4	3	1	1	8	4	8	3	36
2003	2	1	0	1	1	0	2	2	3	4	3	2	21
2004	0	2	1	1	1	1	2	2	1	2	3	4	20
2005	2												2
5 Yr. Ave.	1.8	1.4	1.2	1.6	2	1.6	1.8	1.8	3	3.4	4	2.8	27.2
MAX	3	3	4	4	4	4	3	2	8	6	8	4	36
MIN	0	0	0	1	0	0	1	1	1	1	3	1	20

AIR CARRIER FATAL ACCIDENTS (FAR 135)

FY	OCT	NOV	DEC	JAN	FEB	MAR	APR	MAY	JUN	JUL	AUG	SEP	TOTAL
95	0	1	2	0	1	0	0	0	1	1	1	0	7
96	0	0	0	0	0	0	0	0	0	1	1	1	3
97	1	2	1	1	0	0	1	0	1	2	1	1	11
98	1	1	0	0	1	0	0	1	0	0	1	2	7
99	0	0	0	0	0	0	1	0	2	0	0	1	4
2000	0	0	1	0	1	0	0	0	1	0	0	2	5
2001	0	0	0	1	0	0	0	0	0	2	0	0	3
2002	2	0	0	1	1	0	0	0	0	1	1	0	6
2003	0	0	0	0	0	0	0	1	1	1	1	0	4
2004	0	0	0	0	0	0	1	0	1	0	0	1	3
2005	0												
5 Yr. Ave.	0.4	0	0.2	0.4	0.4	0	0.2	0.2	0.6	0.8	0.4	0.6	4.2
MAX	2	0	1	1	1	0	1	1	1	2	1	2	6
MIN	0	0	0	0	0	0	0	0	0	0	0	0	3

AIR CARRIER FATALITIES (FAR 135)

FY	OCT	NOV	DEC	JAN	FEB	MAR	APR	MAY	JUN	JUL	AUG	SEP	TOTAL
95	0	1	6	0	1	0	0	0	4	6	2	0	20
96	0	0	0	0	0	0	0	0	0	1	2	3	6
97	3	3	1	1	0	0	5	0	2	8	1	1	25
98	2	8	0	0	1	0	0	2	0	0	1	6	20
99	0	0	0	0	0	0	1	0	8	0	0	1	10
2000	0	0	6	0	6	0	0	0	4	0	0	6	22
2001	0	0	2	2	0	0	0	0	0	7	0	0	11
2002	13	0	0	1	1	0	0	0	0	4	2	0	21
2003	0	0	0	0	0	0	0	4	3	1	2	0	10
2004	0	0	0	0	0	0	1	0	1	0	0	5	7
2005	0												
5 Yr. Ave.	2.6	0	1.6	0.6	1.4	0	0.2	0.8	1.6	2.4	0.8	2.2	14.2
MAX	13	0	6	2	6	0	1	4	4	7	2	6	22
MIN	0	0	0	0	0	0	0	0	0	0	0	0	7

SUBTOTAL AK GOAL ACCIDENTS (GA & FAR 135)

FY	OCT	NOV	DEC	JAN	FEB	MAR	APR	MAY	JUN	JUL	AUG	SEP	TOTAL
95	5	5	11	6	2	12	8	13	29	27	31	19	168
96	11	6	7	2	0	14	20	15	13	17	26	33	164
97	6	3	4	8	7	17	21	12	15	17	21	25	156
98	6	2	3	3	7	8	9	20	26	24	19	31	158
99	8	2	5	5	3	10	16	10	20	18	26	26	149
2000	8	4	6	1	8	7	12	11	19	12	17	22	127
2001	11	6	7	6	4	7	10	7	15	18	29	18	138
2002	6	0	0	2	6	8	3	9	27	16	28	16	121
2003	10	4	6	1	4	7	7	7	13	19	20	22	120
2004	4	7	4	3	3	5	8	10	11	13	14	18	100
2005	13												
5 Yr. Ave.	8.8	4.2	4.6	2.6	5	6.8	8	8.8	17	15.6	21.6	19.2	121.2
MAX	13	7	7	6	8	8	12	11	27	19	29	22	138
MIN	4	0	0	1	3	5	3	7	11	12	14	16	100

AAI-240

System Safety Analysis Branch

SUBTOTAL AK GOAL FATAL ACCIDENTS (GA & FAR 135)

FY	OCT	NOV	DEC	JAN	FEB	MAR	APR	MAY	JUN	JUL	AUG	SEP	TOTAL
95	0	1	2	0	1	0	1	2	4	5	5	2	23
96	0	0	0	0	0	0	1	1	1	3	4	5	15
97	2	2	1	1	2	3	4	0	2	2	2	3	24
98	2	1	0	0	1	0	1	3	1	3	2	3	17
99	0	0	0	0	0	0	1	2	3	0	5	1	12
2000	0	0	1	0	1	0	0	1	3	2	2	2	12
2001	1	0	2	1	0	0	0	0	0	3	2	0	9
2002	2	0	0	1	1	1	1	1	2	2	4	0	15
2003	0	0	1	0	0	0	0	1	2	3	3	1	11
2004	0	0	0	0	0	0	1	1	2	2	3	2	11
2005	1												
5 Yr. Ave.	0.8	0	0.8	0.4	0.4	0.2	0.4	0.8	1.8	2.4	2.8	1	11.6
MAX	2	0	2	1	1	1	1	1	3	3	4	2	15
MIN	0	0	0	0	0	0	0	0	0	2	2	0	9

SUBTOTAL AK Goal FATALITIES (GA & FAR 135)

FY	OCT	NOV	DEC	JAN	FEB	MAR	APR	MAY	JUN	JUL	AUG	SEP	TOTAL
95	0	1	6	0	1	0	2	3	18	15	8	3	57
96	0	0	0	0	0	0	1	2	1	4	6	11	25
97	4	3	1	1	4	6	11	0	6	8	4	4	52
98	3	8	0	0	1	0	1	6	1	5	2	7	34
99	0	0	0	0	0	0	1	3	9	0	11	1	25
2000	0	0	6	0	6	0	0	1	6	2	4	6	31
2001	1	0	6	2	0	0	0	0	0	11	2	0	22
2002	13	0	0	1	1	1	1	2	2	6	7	0	34
2003	0	0	1	0	0	0	0	4	5	10	7	3	30
2004	0	0	0	0	0	0	1	1	2	8	4	7	23
2005	1												
5 Yr. Ave.	3	0	2.6	0.6	1.4	0.2	0.4	1.6	3	7.4	4.8	3.2	28
MAX	13	0	6	2	6	1	1	4	6	11	7	7	34
MIN	0	0	0	0	0	0	0	0	0	2	2	0	22

AAL-240

System Safety Analysis Branch

AIR CARRIER TOTAL (FAR 121)

FY	OCT	NOV	DEC	JAN	FEB	MAR	APR	MAY	JUN	JUL	AUG	SEP	TOTAL
95	0	1	1	0	0	0	0	0	1	1	0	0	4
96	0	0	0	0	2	0	0	1	0	2	0	0	5
97	0	0	1	0	0	0	1	0	0	0	1	0	3
98	1	0	0	1	0	0	0	0	1	0	1	0	4
99	0	2	0	0	0	0	0	2	0	1	2	0	7
2000	0	0	0	0	0	0	0	0	0	0	0	0	0
2001	2	1	0	1	0	0	0	0	0	1	1	1	7
2002	0	0	1	0	1	2	0	0	0	1	0	0	5
2003	0	0	0	1	0	1	1	0	0	0	0	0	3
2004	0	0	0	0	0	0	0	1	0	0	0	0	1
2005	0												
5 Yr. Ave.	0.4	0.2	0.2	0.4	0.2	0.6	0.2	0.2	0	0.4	0.2	0.2	3.2
MAX	2	1	1	1	1	2	1	1	0	1	1	1	7
MIN	0	0	0	0	0	0	0	0	0	0	0	0	0

AIR CARRIER FATAL ACCIDENTS (FAR 121)

FY	OCT	NOV	DEC	JAN	FEB	MAR	APR	MAY	JUN	JUL	AUG	SEP	TOTAL
95	0	0	0	0	0	0	0	0	0	0	0	0	0
96	0	0	0	0	0	0	0	0	0	2	0	0	2
97	0	0	0	0	0	0	0	0	0	0	0	0	0
98	0	0	0	0	0	0	0	0	0	0	0	0	0
99	0	0	0	0	0	0	0	1	0	0	0	0	1
2000	0	0	0	0	0	0	0	0	0	0	0	0	0
2001	0	0	0	0	0	0	0	0	0	0	0	0	0
2002	0	0	0	0	0	0	0	0	0	0	0	0	0
2003	0	0	0	0	0	0	0	0	0	0	0	0	0
2004	0	0	0	0	0	0	0	0	0	0	0	0	0
2005	0												
5 Yr. Ave.	0	0	0	0	0	0	0	0	0	0	0	0	0
MAX	0	0	0	0	0	0	0	0	0	0	0	0	0
MIN	0	0	0	0	0	0	0	0	0	0	0	0	0

AIR CARRIER FATALITIES (FAR 121)

FY	OCT	NOV	DEC	JAN	FEB	MAR	APR	MAY	JUN	JUL	AUG	SEP	TOTAL
95	0	0	0	0	0	0	0	0	0	0	0	0	0
96	0	0	0	0	0	0	0	0	0	5	0	0	5
97	0	0	0	0	0	0	0	0	0	0	0	0	0
98	0	0	0	0	0	0	0	0	0	0	0	0	0
99	0	0	0	0	0	0	0	1	0	0	0	0	1
2000	0	0	0	0	0	0	0	0	0	0	0	0	0
2001	0	0	0	0	0	0	0	0	0	0	0	0	0
2002	0	0	0	0	0	0	0	0	0	0	0	0	0
2003	0	0	0	0	0	0	0	0	0	0	0	0	0
2004	0	0	0	0	0	0	0	0	0	0	0	0	0
2005	0												
5 Yr. Ave.	0	0	0	0	0	0	0	0	0	0	0	0	0
MAX	0	0	0	0	0	0	0	0	0	0	0	0	0
MIN	0	0	0	0	0	0	0	0	0	0	0	0	0

TOTAL ACCIDENTS All Events

FY	OCT	NOV	DEC	JAN	FEB	MAR	APR	MAY	JUN	JUL	AUG	SEP	TOTAL
95	5	6	12	6	2	12	8	13	30	28	31	19	172
96	11	6	7	2	2	14	20	16	13	19	26	33	169
97	6	3	5	8	7	17	22	12	15	17	22	25	159
98	7	2	3	4	7	8	9	20	27	24	20	31	162
99	8	4	5	5	3	10	16	12	20	19	28	26	156
2000	8	4	6	1	8	7	12	11	19	12	17	22	127
2001	13	7	7	7	4	7	10	7	15	19	30	19	145
2002	6	0	1	2	7	10	3	9	27	17	28	16	126
2003	10	4	6	2	4	8	8	7	13	19	20	22	123
2004	4	7	4	3	3	5	8	11	12	14	14	18	103
2005	13												
5 Yr. Ave.	9.2	4.4	4.8	3	5.2	7.4	8.2	9	17.2	16.2	21.8	19.4	124.8
MAX	13	7	7	7	8	10	12	11	27	19	30	22	145
MIN	4	0	1	1	3	5	3	7	12	12	14	16	103

AAI-240

System Safety Analysis Branch

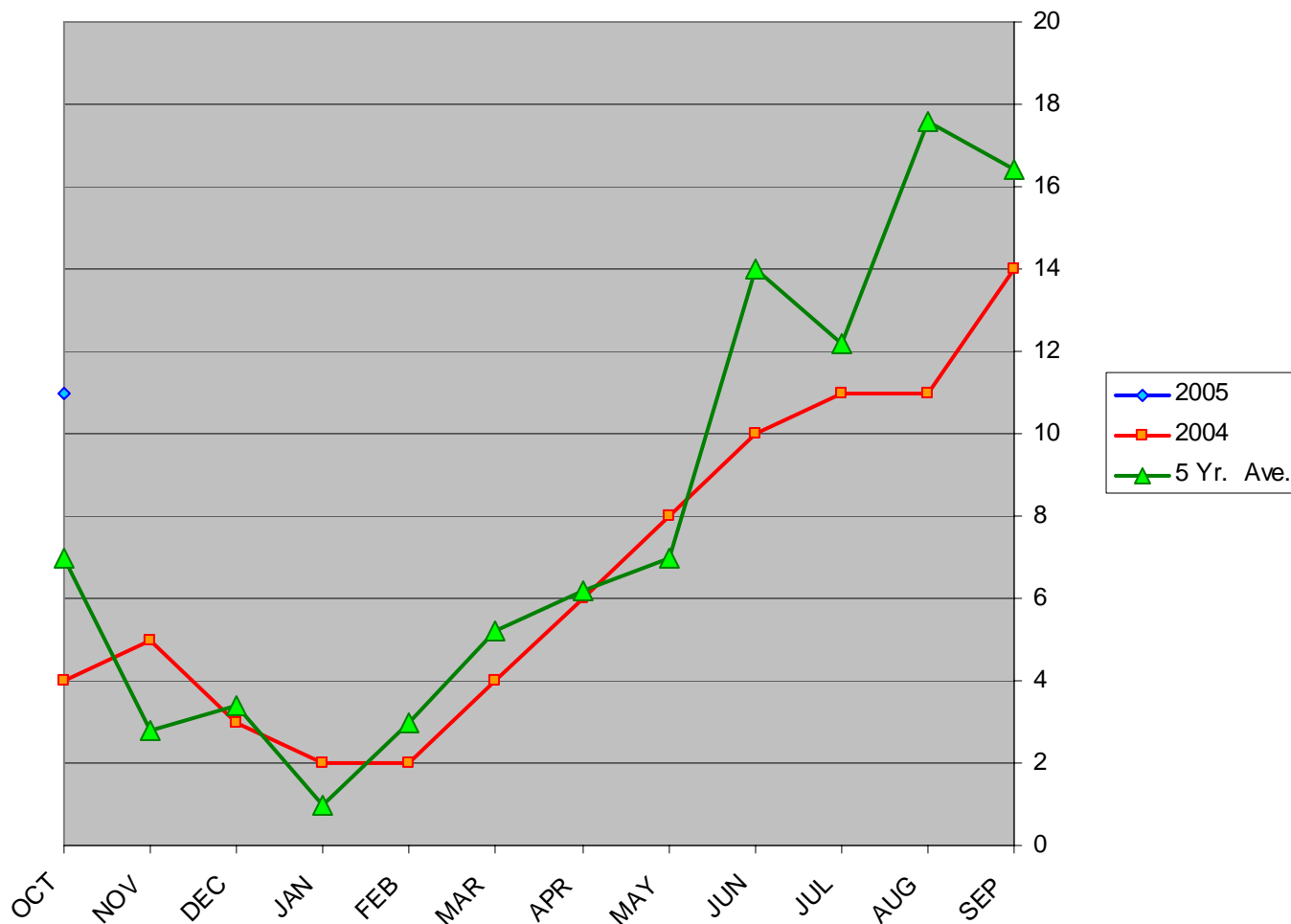
TOTAL FATAL ACCIDENTS All Events

FY	OCT	NOV	DEC	JAN	FEB	MAR	APR	MAY	JUN	JUL	AUG	SEP	TOTAL
95	0	1	2	0	1	0	1	2	4	5	5	2	23
96	0	0	0	0	0	0	1	1	1	5	4	5	17
97	2	2	1	1	2	3	4	0	2	2	2	3	24
98	2	1	0	0	1	0	1	3	1	3	2	3	17
99	0	0	0	0	0	0	1	3	3	0	5	1	13
2000	0	0	1	0	1	0	0	1	3	2	2	2	12
2001	1	0	2	1	0	0	0	0	0	3	2	0	9
2002	2	0	0	1	1	1	1	1	2	2	4	0	15
2003	0	0	1	0	0	0	0	1	2	3	3	1	11
2004	0	0	0	0	0	0	1	1	2	2	3	2	11
2005	1												
5 Yr. Ave.	0.8	0	0.8	0.4	0.4	0.2	0.4	0.8	1.8	2.4	2.8	1	11.6
MAX	2	0	2	1	1	1	1	1	3	3	4	2	15
MIN	0	0	0	0	0	0	0	0	0	2	2	0	9

TOTAL FATALITIES (All Events)

FY	OCT	NOV	DEC	JAN	FEB	MAR	APR	MAY	JUN	JUL	AUG	SEP	TOTAL
95	0	1	6	0	1	0	2	3	18	15	8	3	57
96	0	0	0	0	0	0	1	2	1	9	6	11	30
97	4	3	1	1	4	6	11	0	6	8	4	4	52
98	3	8	0	0	1	0	1	6	1	5	2	7	34
99	0	0	0	0	0	0	1	4	9	0	11	1	26
2000	0	0	6	0	6	0	0	1	6	2	4	6	31
2001	1	0	6	2	0	0	0	0	0	11	2	0	22
2002	13	0	0	1	1	1	1	2	2	6	7	0	34
2003	0	0	1	0	0	0	0	4	5	10	7	3	30
2004	0	0	0	0	0	0	1	1	2	8	4	7	23
2005	1												
5 Yr. Ave.	3	0	2.6	0.6	1.4	0.2	0.4	1.6	3	7.4	4.8	3.2	28
MAX	13	0	6	2	6	1	1	4	6	11	7	7	34
MIN	0	0	0	0	0	0	0	0	0	2	2	0	22

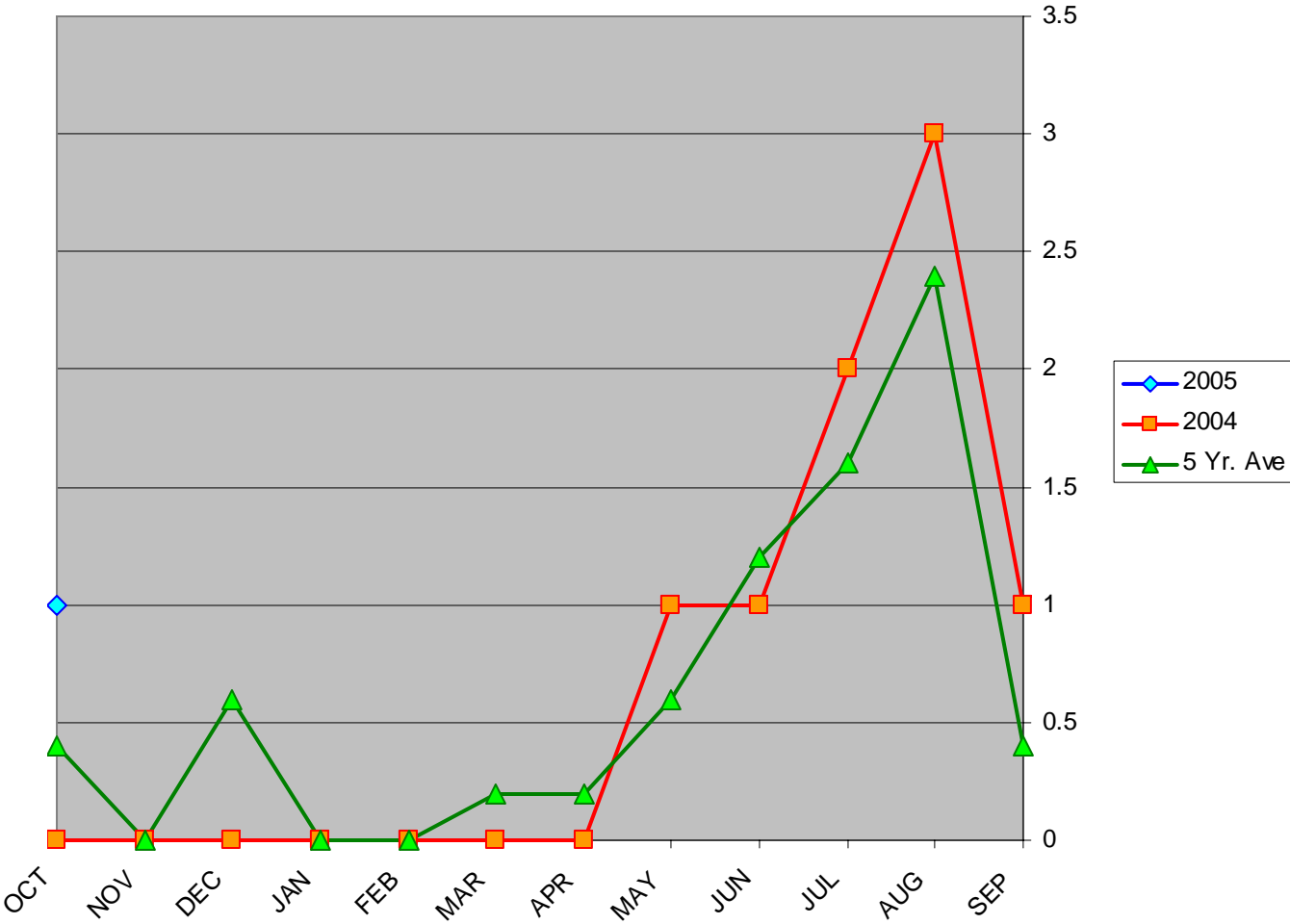
General Aviation Accidents in Alaska



AAL-240

System Safety Analysis Branch

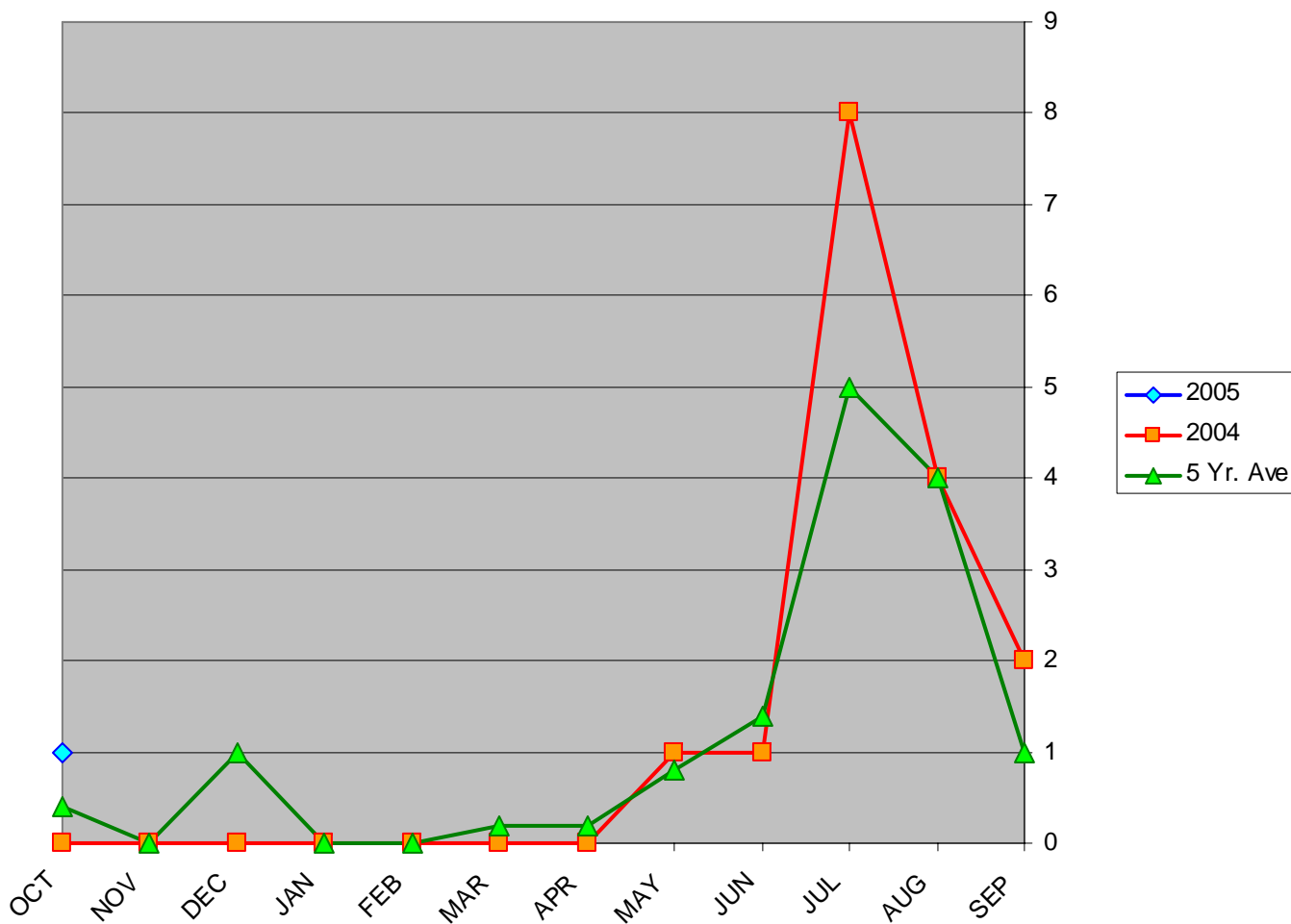
General Aviation Fatal Accidents in Alaska



AAL-240

System Safety Analysis Branch

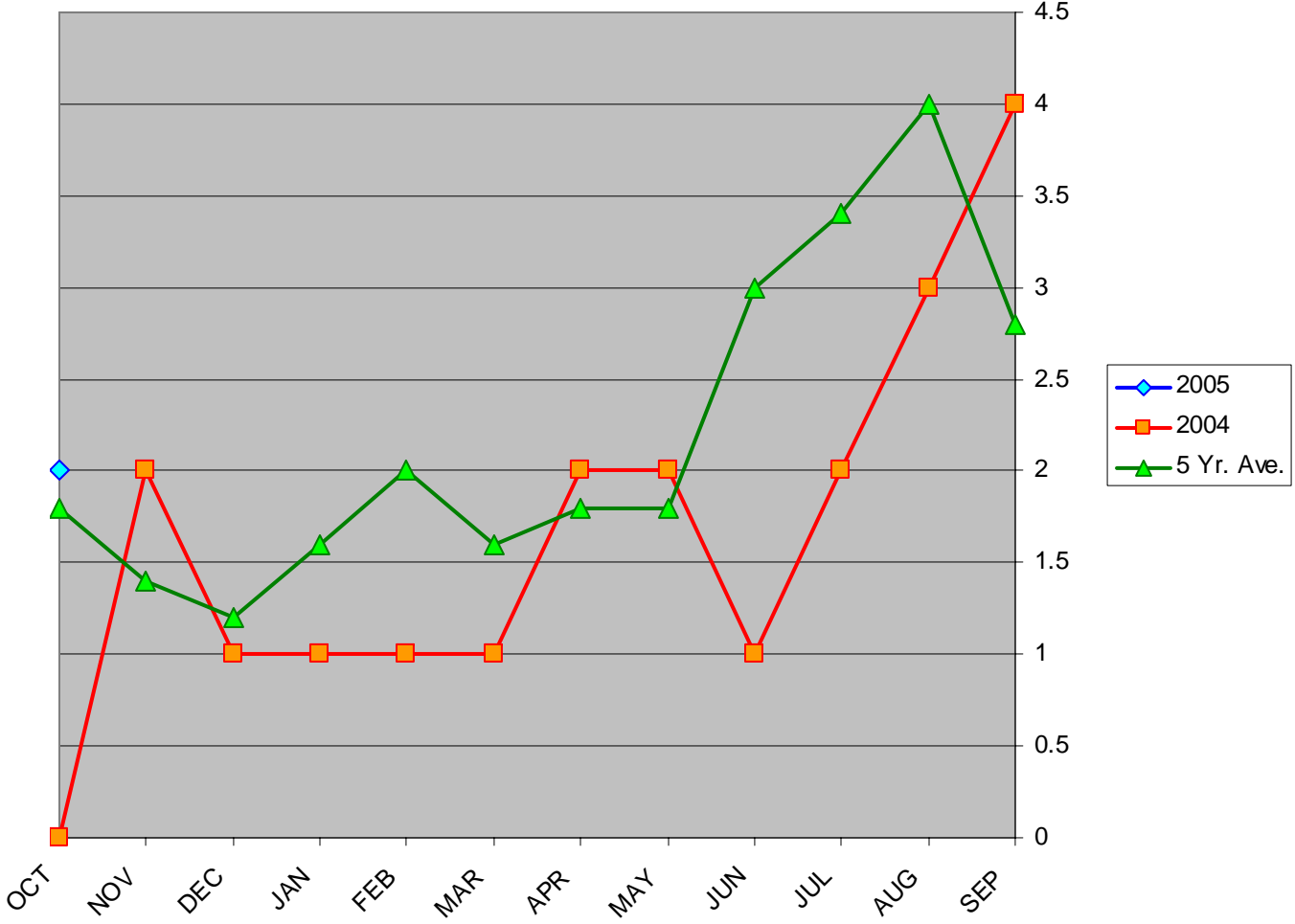
General Aviation Fatalities in Alaska



AAL-240

System Safety Analysis Branch

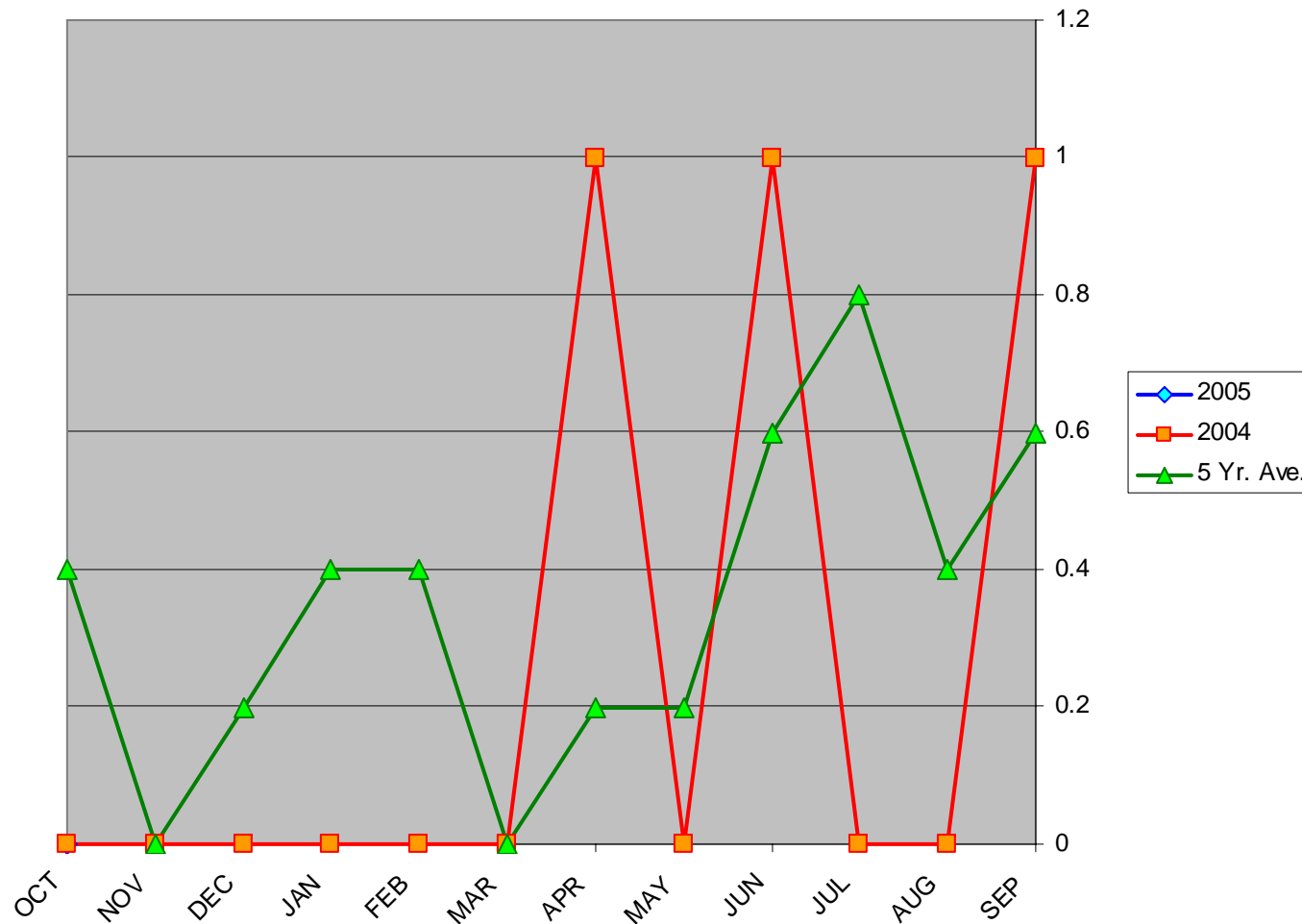
Air Carrier (Part 135) Accidents in Alaska



AAL-240

System Safety Analysis Branch

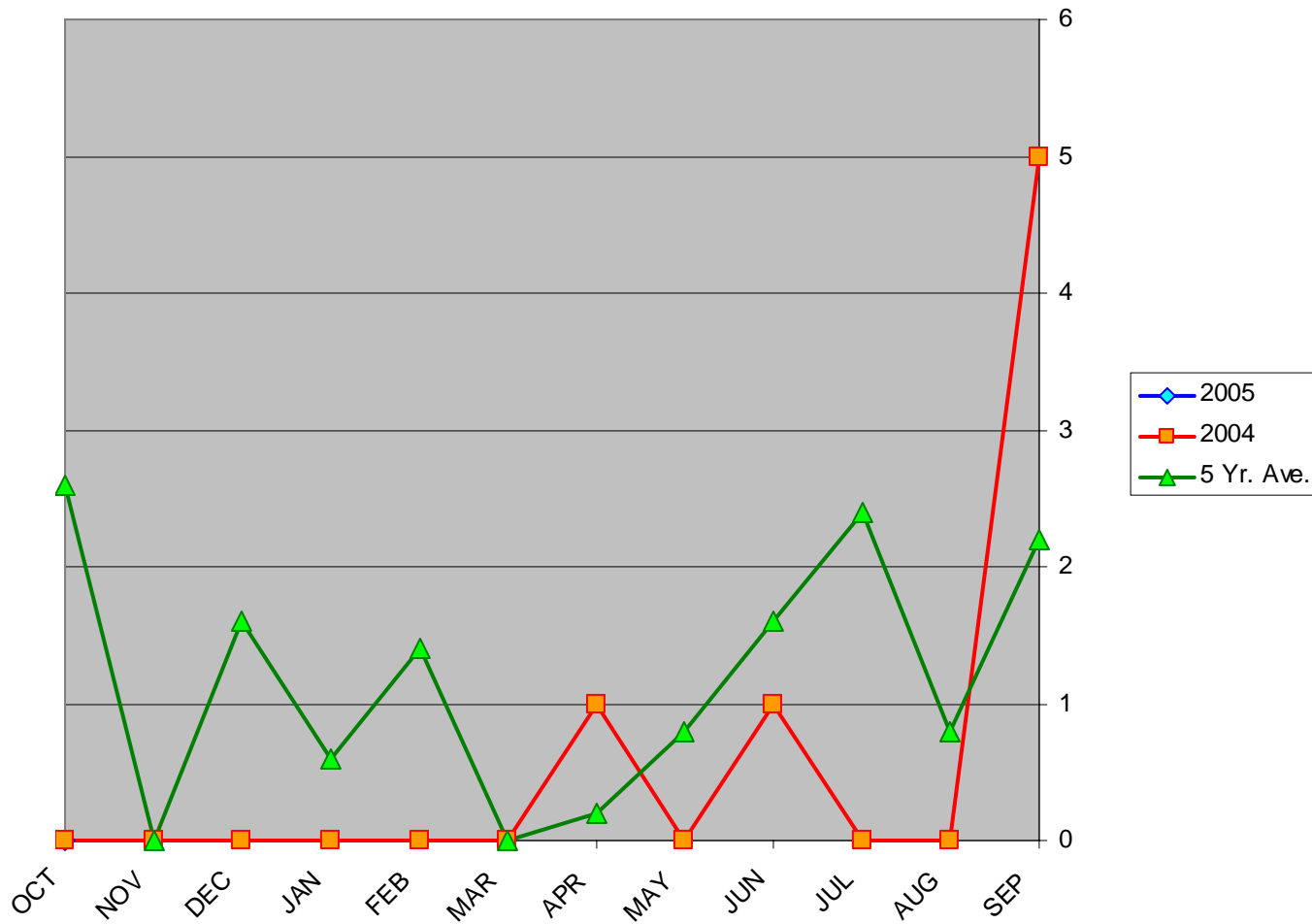
Air Carrier (FAR 135) Fatal Accidents in Alaska



AAL-240

System Safety Analysis Branch

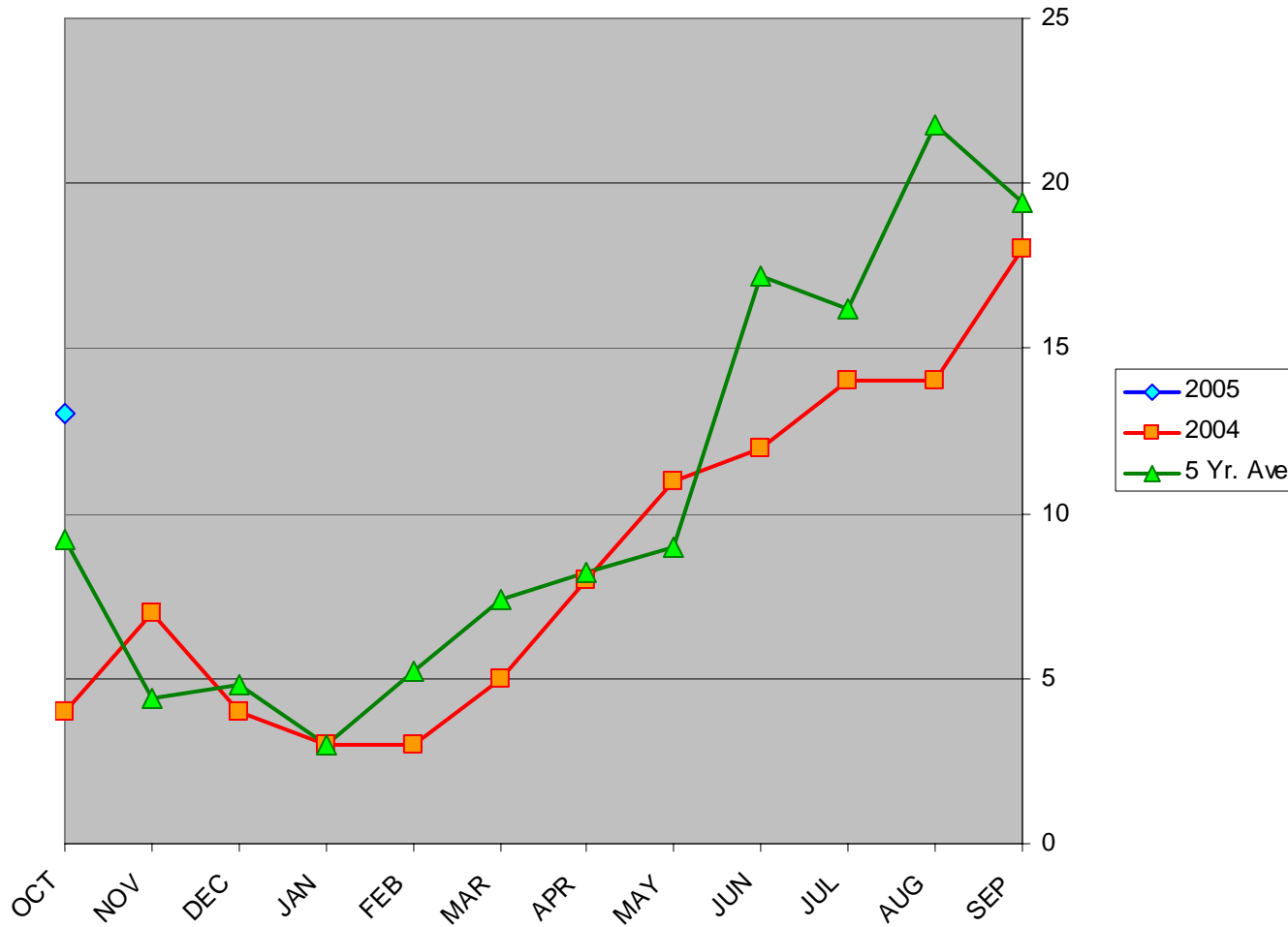
Air Carrier (FAR 135) Fatalities in Alaska



AAL-240

System Safety Analysis Branch

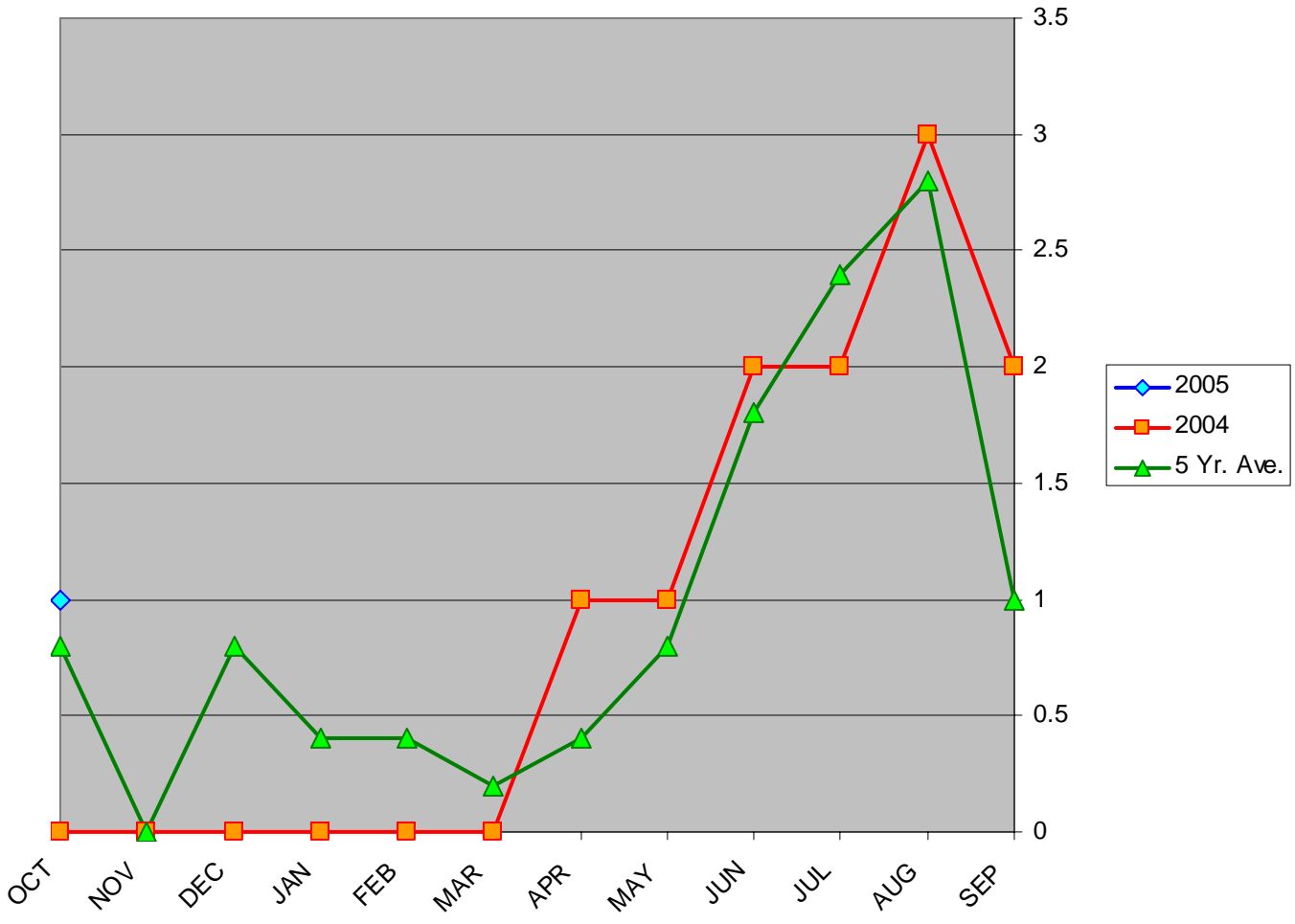
Total Accidents in Alaska



AAL-240

System Safety Analysis Branch

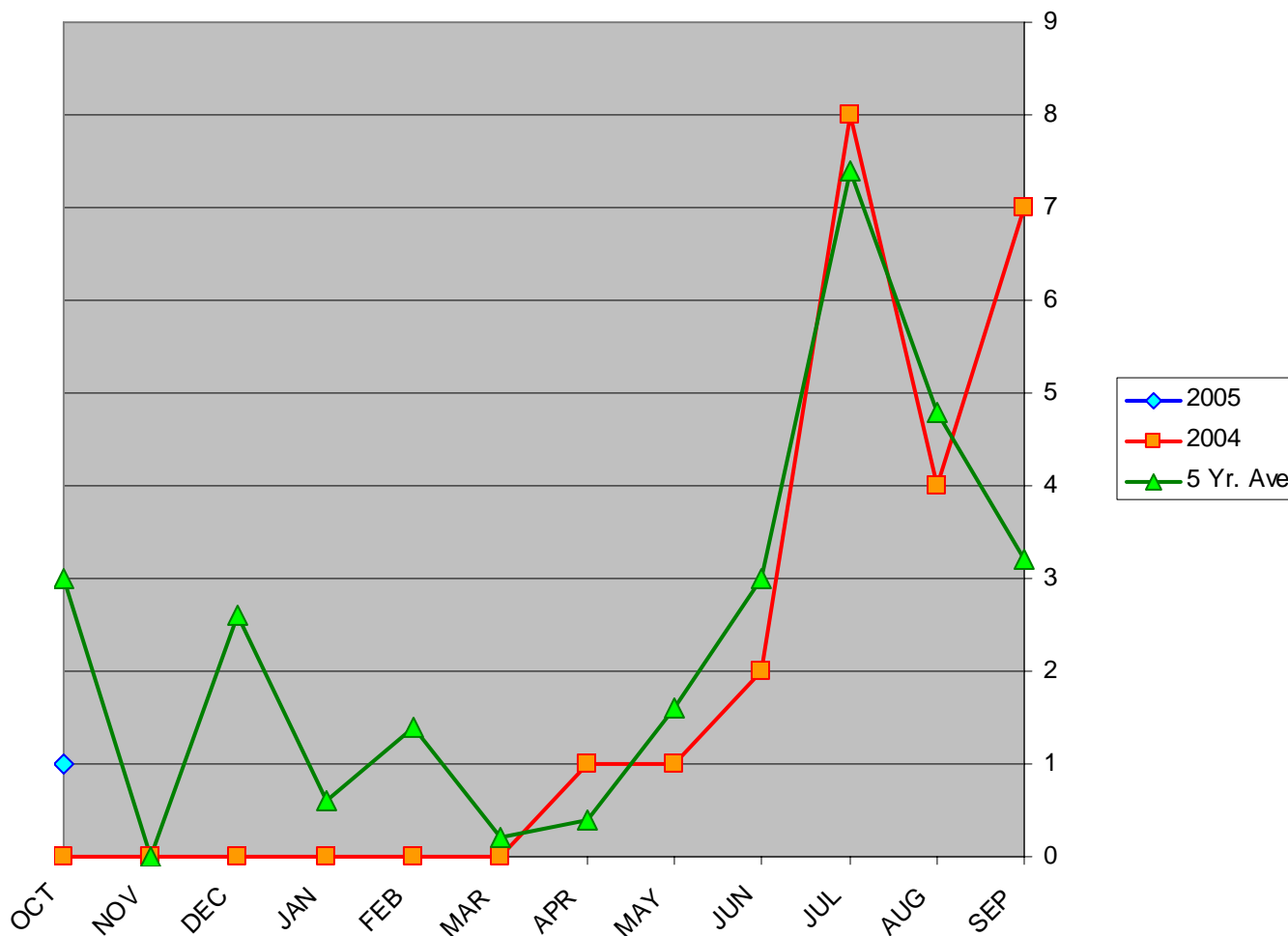
Total Fatal Accidents in Alaska



AAL-240

System Safety Analysis Branch

Total Fatalities in Alaska



AAL-240

System Safety Analysis Branch