

The background is a dark blue gradient with a pattern of concentric circles and a grid of thin lines. The text is centered and white.

Alaska Accident Statistics

November 2004

AAL-240

System Safety Analysis Branch

**FAA ALASKAN REGION
MONTHLY AIRCRAFT ACCIDENT SUMMARY**

November 2004

Accident Comparison for the month of November

	2004	2003	November 5-YEAR		
			High	Low	Average
General Aviation (FAR Parts 91,133,137,125,129 & Public Use)	1	5	5	0	2.4
Fatal Accidents	0	0	0	0	0
Fatalities	0	0	0	0	0
Air Carrier (FAR Part 135)	0	2	3	0	1.2
Fatal Accidents	0	0	0	0	0
Fatalities	0	0	0	0	0
Air Carrier (FAR Part 121)	0	0	0	0	0
Fatal Accidents	0	0	0	0	0
Fatalities	0	0	0	0	0
Total Accidents	1	7	7	0	3.8
Fatal	0	0	0	0	0
Fatalities	0	0	0	0	0

This document is for comparison only. Totals frequently change due to reclassification.

SUMMARY

October 2004

For the month of November, there was one General Aviation (GA) accident, compared with five in November 2003. The 5-year average for GA accidents during the month of November is 2.4 events. There were no fatal GA accidents in November 2004 or 2003.

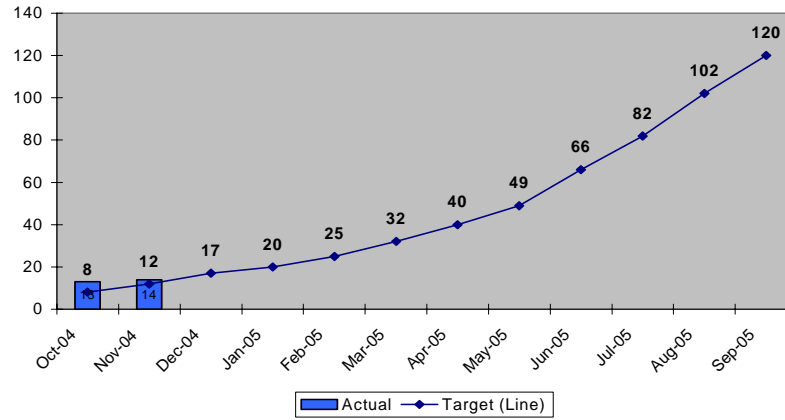
For the month of November, there were no FAR Part 135 Air Carrier accidents, compared with two in November of 2003. The 5-year average for FAR Part 135 Air Carrier accidents during the month of November is 1.2 events. There were no fatal FAR Part 135 Air Carrier accidents for the month of November in 2003 or 2004.

There were no FAR Part 121 events for the month of November in 2004 or 2003.

There was one aircraft accident during November 2004. This is compared with seven in November 2003. The 5-year average for accidents during the month of November is 3.8 events. There were no fatal accidents for the month of November 2004 or 2003.

Note: Statistics contained in this report may differ from past reports produced by the System Safety Analysis Branch. This is caused by frequent reclassifications of events by the National Transportation Safety Board. The format of this report has been modified to display statistics by fiscal year instead of calendar year.

**Status of FAA Performance Targets
Alaska GA & 135 Accidents
Fiscal Year to Date
Cummulative Total**



Description

Reduce accidents in Alaska for General Aviation and all Part 135 operations by 20% by Fiscal Year (FY) 2008 (from the 2000-2002 average of 130 accidents per year to no more than 104 accidents per year). (FY 2004 target is no more than 125 accidents)

This chart indicates the monthly total of Alaskan accidents. The graph shows the cumulative number of Alaskan accidents versus the target.

	Actual	Target (Line)	Index Range
Oct-04	13	8	Red
Nov-04	14	12	Yellow
Dec-04		17	
Jan-05		20	
Feb-05		25	
Mar-05		32	
Apr-05		40	
May-05		49	
Jun-05		66	
Jul-05		82	
Aug-05		102	
Sep-05		120	

GENERAL AVIATION TOTAL

FY	OCT	NOV	DEC	JAN	FEB	MAR	APR	MAY	JUN	JUL	AUG	SEP	TOTAL
95	4	2	7	4	0	8	8	9	26	23	28	17	136
96	11	4	4	2	0	11	18	12	11	13	19	26	131
97	5	1	1	6	5	15	15	11	13	10	16	18	116
98	4	0	2	2	3	8	6	14	21	22	16	23	121
99	4	2	2	2	2	8	9	10	15	17	23	21	115
2000	2	3	2	0	4	3	11	9	17	11	14	18	94
2001	9	3	6	2	4	7	7	5	14	12	26	17	112
2002	3	0	0	1	2	5	2	8	19	12	20	13	85
2003	8	3	6	0	3	7	5	5	10	15	17	20	99
2004	4	5	3	2	2	4	6	8	10	11	11	14	80
2005	11	1											12
5 Yr. Ave.	7	2.4	3.4	1	3	5.2	6.2	7	14	12.2	17.6	16.4	94
MAX	11	5	6	2	4	7	11	9	19	15	26	20	112
MIN	3	0	0	0	2	3	2	5	10	11	11	13	80

GENERAL AVIATION FATAL ACCIDENTS

FY	OCT	NOV	DEC	JAN	FEB	MAR	APR	MAY	JUN	JUL	AUG	SEP	TOTAL
95	0	0	0	0	0	0	1	2	3	4	4	2	16
96	0	0	0	0	0	0	1	1	1	2	3	4	12
97	1	0	0	0	2	3	3	0	1	0	1	2	13
98	1	0	0	0	0	0	1	2	1	3	1	1	10
99	0	0	0	0	0	0	0	2	1	0	5	0	8
2000	0	0	0	0	0	0	0	1	2	2	2	0	7
2001	1	0	2	0	0	0	0	0	0	1	2	0	6
2002	0	0	0	0	0	1	1	1	2	1	3	0	9
2003	0	0	1	0	0	0	0	0	1	2	2	1	7
2004	0	0	0	0	0	0	0	1	1	2	3	1	8
2005	1	0											1
5 Yr. Ave	0.4	0	0.6	0	0	0.2	0.2	0.6	1.2	1.6	2.4	0.4	7.4
MAX	1	0	2	0	0	1	1	1	2	2	3	1	9
MIN	0	0	0	0	0	0	0	0	0	1	2	0	6

GENERAL AVIATION FATALITIES

FY	OCT	NOV	DEC	JAN	FEB	MAR	APR	MAY	JUN	JUL	AUG	SEP	TOTAL
95	0	0	0	0	0	0	2	3	14	9	6	3	37
96	0	0	0	0	0	0	1	2	1	3	4	8	19
97	1	0	0	0	4	6	6	0	4	0	3	3	27
98	1	0	0	0	0	0	1	4	1	5	1	1	14
99	0	0	0	0	0	0	0	3	1	0	11	0	15
2000	0	0	0	0	0	0	0	1	2	2	4	0	9
2001	1	0	4	0	0	0	0	0	0	4	2	0	11
2002	0	0	0	0	0	1	1	2	2	2	5	0	13
2003	0	0	1	0	0	0	0	0	2	9	5	3	20
2004	0	0	0	0	0	0	0	1	1	8	4	2	16
2005	1	0											1
5 Yr.													
Ave	0.4	0	1	0	0	0.2	0.2	0.8	1.4	5	4	1	13.8
MAX	1	0	4	0	0	1	1	2	2	9	5	3	20
MIN	0	0	0	0	0	0	0	0	0	2	2	0	9

AAL-240

System Safety Analysis Branch

AIR CARRIER TOTAL (FAR 135)

FY	OCT	NOV	DEC	JAN	FEB	MAR	APR	MAY	JUN	JUL	AUG	SEP	TOTAL
95	1	3	4	2	2	4	0	4	3	4	3	2	32
96	0	2	3	0	0	3	2	3	2	4	7	7	33
97	1	2	3	2	2	2	6	1	2	7	5	7	40
98	2	2	1	1	4	0	3	6	5	2	3	8	37
99	4	0	3	3	1	2	7	0	5	1	3	5	34
2000	6	1	4	1	4	4	1	2	2	1	3	4	33
2001	2	3	1	4	0	0	3	2	1	6	3	1	26
2002	3	0	0	1	4	3	1	1	8	4	8	3	36
2003	2	1	0	1	1	0	2	2	3	4	3	2	21
2004	0	2	1	1	1	1	2	2	1	2	3	4	20
2005	2	0											2
5 Yr. Ave.	1.8	1.2	1.2	1.6	2	1.6	1.8	1.8	3	3.4	4	2.8	27.2
MAX	3	3	4	4	4	4	3	2	8	6	8	4	36
MIN	0	0	0	1	0	0	1	1	1	1	3	1	20

AIR CARRIER FATAL ACCIDENTS (FAR 135)

FY	OCT	NOV	DEC	JAN	FEB	MAR	APR	MAY	JUN	JUL	AUG	SEP	TOTAL
95	0	1	2	0	1	0	0	0	1	1	1	0	7
96	0	0	0	0	0	0	0	0	0	1	1	1	3
97	1	2	1	1	0	0	1	0	1	2	1	1	11
98	1	1	0	0	1	0	0	1	0	0	1	2	7
99	0	0	0	0	0	0	1	0	2	0	0	1	4
2000	0	0	1	0	1	0	0	0	1	0	0	2	5
2001	0	0	0	1	0	0	0	0	0	2	0	0	3
2002	2	0	0	1	1	0	0	0	0	1	1	0	6
2003	0	0	0	0	0	0	0	1	1	1	1	0	4
2004	0	0	0	0	0	0	1	0	1	0	0	1	3
2005	0	0											0
5 Yr. Ave.	0.4	0	0.2	0.4	0.4	0	0.2	0.2	0.6	0.8	0.4	0.6	4.2
MAX	2	0	1	1	1	0	1	1	1	2	1	2	6
MIN	0	0	0	0	0	0	0	0	0	0	0	0	3

AIR CARRIER FATALITIES (FAR 135)

FY	OCT	NOV	DEC	JAN	FEB	MAR	APR	MAY	JUN	JUL	AUG	SEP	TOTAL
95	0	1	6	0	1	0	0	0	4	6	2	0	20
96	0	0	0	0	0	0	0	0	0	1	2	3	6
97	3	3	1	1	0	0	5	0	2	8	1	1	25
98	2	8	0	0	1	0	0	2	0	0	1	6	20
99	0	0	0	0	0	0	1	0	8	0	0	1	10
2000	0	0	6	0	6	0	0	0	4	0	0	6	22
2001	0	0	2	2	0	0	0	0	0	7	0	0	11
2002	13	0	0	1	1	0	0	0	0	4	2	0	21
2003	0	0	0	0	0	0	0	4	3	1	2	0	10
2004	0	0	0	0	0	0	1	0	1	0	0	5	7
2005	0	0											
5 Yr. Ave.	2.6	0	1.6	0.6	1.4	0	0.2	0.8	1.6	2.4	0.8	2.2	14.2
MAX	13	0	6	2	6	0	1	4	4	7	2	6	22
MIN	0	0	0	0	0	0	0	0	0	0	0	0	7

SUBTOTAL AK GOAL ACCIDENTS (GA & FAR 135)

FY	OCT	NOV	DEC	JAN	FEB	MAR	APR	MAY	JUN	JUL	AUG	SEP	TOTAL
95	5	5	11	6	2	12	8	13	29	27	31	19	168
96	11	6	7	2	0	14	20	15	13	17	26	33	164
97	6	3	4	8	7	17	21	12	15	17	21	25	156
98	6	2	3	3	7	8	9	20	26	24	19	31	158
99	8	2	5	5	3	10	16	10	20	18	26	26	149
2000	8	4	6	1	8	7	12	11	19	12	17	22	127
2001	11	6	7	6	4	7	10	7	15	18	29	18	138
2002	6	0	0	2	6	8	3	9	27	16	28	16	121
2003	10	4	6	1	4	7	7	7	13	19	20	22	120
2004	4	7	4	3	3	5	8	10	11	13	14	18	100
2005	13	1											14
5 Yr. Ave.	8.8	3.6	4.6	2.6	5	6.8	8	8.8	17	15.6	21.6	19.2	121.2
MAX	13	7	7	6	8	8	12	11	27	19	29	22	138
MIN	4	0	0	1	3	5	3	7	11	12	14	16	100

AAI-240

System Safety Analysis Branch

SUBTOTAL AK GOAL FATAL ACCIDENTS (GA & FAR 135)

FY	OCT	NOV	DEC	JAN	FEB	MAR	APR	MAY	JUN	JUL	AUG	SEP	TOTAL
95	0	1	2	0	1	0	1	2	4	5	5	2	23
96	0	0	0	0	0	0	1	1	1	3	4	5	15
97	2	2	1	1	2	3	4	0	2	2	2	3	24
98	2	1	0	0	1	0	1	3	1	3	2	3	17
99	0	0	0	0	0	0	1	2	3	0	5	1	12
2000	0	0	1	0	1	0	0	1	3	2	2	2	12
2001	1	0	2	1	0	0	0	0	0	3	2	0	9
2002	2	0	0	1	1	1	1	1	2	2	4	0	15
2003	0	0	1	0	0	0	0	1	2	3	3	1	11
2004	0	0	0	0	0	0	1	1	2	2	3	2	11
2005	1	0											1
5 Yr. Ave.	0.8	0	0.8	0.4	0.4	0.2	0.4	0.8	1.8	2.4	2.8	1	11.6
MAX	2	0	2	1	1	1	1	1	3	3	4	2	15
MIN	0	0	0	0	0	0	0	0	0	2	2	0	9

SUBTOTAL AK Goal FATALITIES (GA & FAR 135)

FY	OCT	NOV	DEC	JAN	FEB	MAR	APR	MAY	JUN	JUL	AUG	SEP	TOTAL
95	0	1	6	0	1	0	2	3	18	15	8	3	57
96	0	0	0	0	0	0	1	2	1	4	6	11	25
97	4	3	1	1	4	6	11	0	6	8	4	4	52
98	3	8	0	0	1	0	1	6	1	5	2	7	34
99	0	0	0	0	0	0	1	3	9	0	11	1	25
2000	0	0	6	0	6	0	0	1	6	2	4	6	31
2001	1	0	6	2	0	0	0	0	0	11	2	0	22
2002	13	0	0	1	1	1	1	2	2	6	7	0	34
2003	0	0	1	0	0	0	0	4	5	10	7	3	30
2004	0	0	0	0	0	0	1	1	2	8	4	7	23
2005	1	0											1
5 Yr. Ave.	3	0	2.6	0.6	1.4	0.2	0.4	1.6	3	7.4	4.8	3.2	28
MAX	13	0	6	2	6	1	1	4	6	11	7	7	34
MIN	0	0	0	0	0	0	0	0	0	2	2	0	22

AIR CARRIER TOTAL (FAR 121)

FY	OCT	NOV	DEC	JAN	FEB	MAR	APR	MAY	JUN	JUL	AUG	SEP	TOTAL
95	0	1	1	0	0	0	0	0	1	1	0	0	4
96	0	0	0	0	2	0	0	1	0	2	0	0	5
97	0	0	1	0	0	0	1	0	0	0	1	0	3
98	1	0	0	1	0	0	0	0	1	0	1	0	4
99	0	2	0	0	0	0	0	2	0	1	2	0	7
2000	0	0	0	0	0	0	0	0	0	0	0	0	0
2001	2	1	0	1	0	0	0	0	0	1	1	1	7
2002	0	0	1	0	1	2	0	0	0	1	0	0	5
2003	0	0	0	1	0	1	1	0	0	0	0	0	3
2004	0	0	0	0	0	0	0	1	0	0	0	0	1
2005	0	0											0
5 Yr. Ave.	0.4	0.2	0.2	0.4	0.2	0.6	0.2	0.2	0	0.4	0.2	0.2	3.2
MAX	2	1	1	1	1	2	1	1	0	1	1	1	7
MIN	0	0	0	0	0	0	0	0	0	0	0	0	0

AAI-240

System Safety Analysis Branch

AIR CARRIER FATAL ACCIDENTS (FAR 121)

FY	OCT	NOV	DEC	JAN	FEB	MAR	APR	MAY	JUN	JUL	AUG	SEP	TOTAL
95	0	0	0	0	0	0	0	0	0	0	0	0	0
96	0	0	0	0	0	0	0	0	0	2	0	0	2
97	0	0	0	0	0	0	0	0	0	0	0	0	0
98	0	0	0	0	0	0	0	0	0	0	0	0	0
99	0	0	0	0	0	0	0	1	0	0	0	0	1
2000	0	0	0	0	0	0	0	0	0	0	0	0	0
2001	0	0	0	0	0	0	0	0	0	0	0	0	0
2002	0	0	0	0	0	0	0	0	0	0	0	0	0
2003	0	0	0	0	0	0	0	0	0	0	0	0	0
2004	0	0	0	0	0	0	0	0	0	0	0	0	0
2005	0	0											0
5 Yr. Ave.	0	0	0	0	0	0	0	0	0	0	0	0	0
MAX	0	0	0	0	0	0	0	0	0	0	0	0	0
MIN	0	0	0	0	0	0	0	0	0	0	0	0	0

AIR CARRIER FATALITIES (FAR 121)

FY	OCT	NOV	DEC	JAN	FEB	MAR	APR	MAY	JUN	JUL	AUG	SEP	TOTAL
95	0	0	0	0	0	0	0	0	0	0	0	0	0
96	0	0	0	0	0	0	0	0	0	5	0	0	5
97	0	0	0	0	0	0	0	0	0	0	0	0	0
98	0	0	0	0	0	0	0	0	0	0	0	0	0
99	0	0	0	0	0	0	0	1	0	0	0	0	1
2000	0	0	0	0	0	0	0	0	0	0	0	0	0
2001	0	0	0	0	0	0	0	0	0	0	0	0	0
2002	0	0	0	0	0	0	0	0	0	0	0	0	0
2003	0	0	0	0	0	0	0	0	0	0	0	0	0
2004	0	0	0	0	0	0	0	0	0	0	0	0	0
2005	0	0											0
5 Yr. Ave.	0	0	0	0	0	0	0	0	0	0	0	0	0
MAX	0	0	0	0	0	0	0	0	0	0	0	0	0
MIN	0	0	0	0	0	0	0	0	0	0	0	0	0

TOTAL ACCIDENTS All Events

FY	OCT	NOV	DEC	JAN	FEB	MAR	APR	MAY	JUN	JUL	AUG	SEP	TOTAL
95	5	6	12	6	2	12	8	13	30	28	31	19	172
96	11	6	7	2	2	14	20	16	13	19	26	33	169
97	6	3	5	8	7	17	22	12	15	17	22	25	159
98	7	2	3	4	7	8	9	20	27	24	20	31	162
99	8	4	5	5	3	10	16	12	20	19	28	26	156
2000	8	4	6	1	8	7	12	11	19	12	17	22	127
2001	13	7	7	7	4	7	10	7	15	19	30	19	145
2002	6	0	1	2	7	10	3	9	27	17	28	16	126
2003	10	4	6	2	4	8	8	7	13	19	20	22	123
2004	4	7	4	3	3	5	8	11	12	14	14	18	103
2005	13	1											14
5 Yr. Ave.	9.2	3.8	4.8	3	5.2	7.4	8.2	9	17.2	16.2	21.8	19.4	124.8
MAX	13	7	7	7	8	10	12	11	27	19	30	22	145
MIN	4	0	1	1	3	5	3	7	12	12	14	16	103

AAI-240

System Safety Analysis Branch

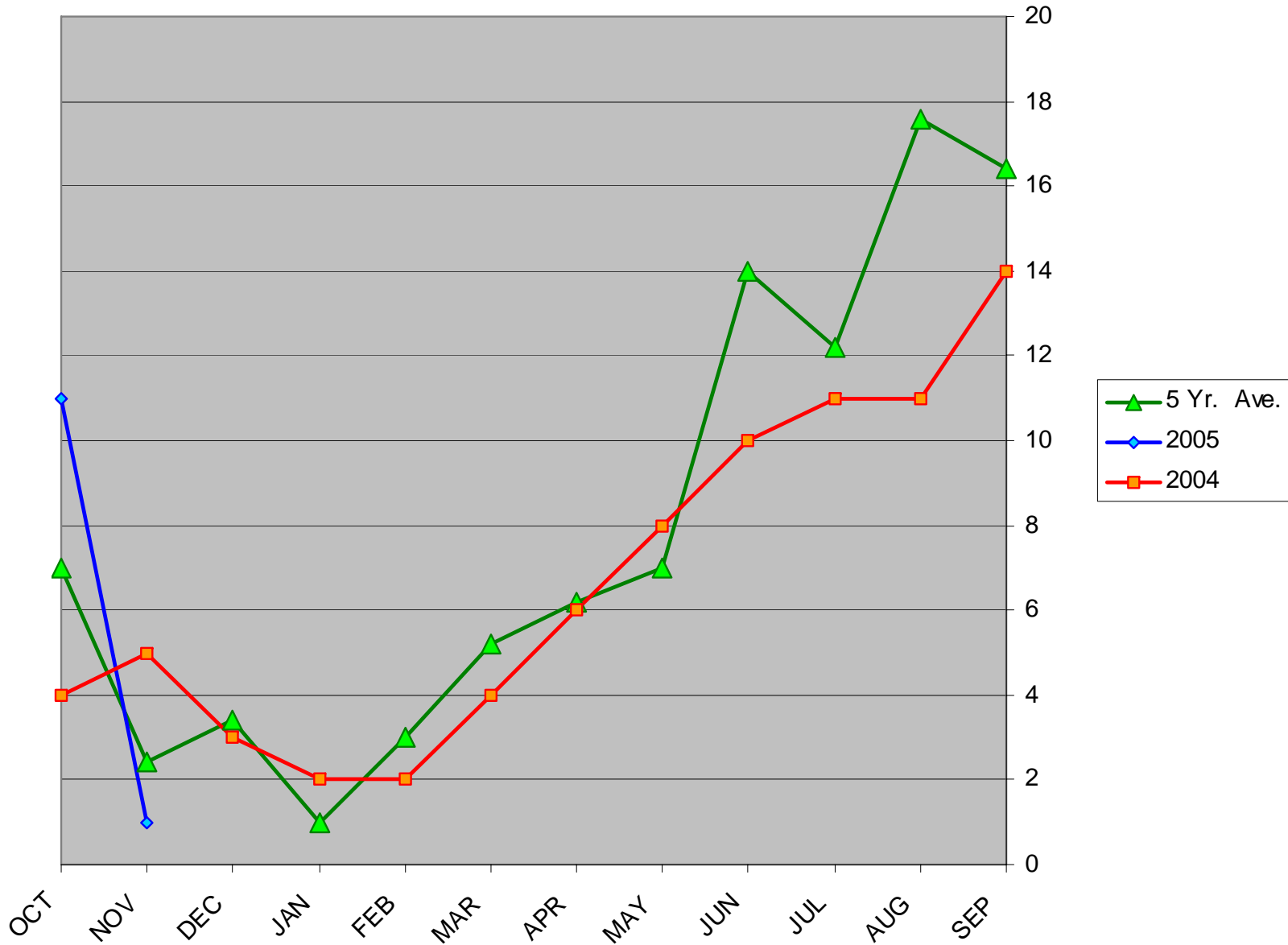
TOTAL FATAL ACCIDENTS All Events

FY	OCT	NOV	DEC	JAN	FEB	MAR	APR	MAY	JUN	JUL	AUG	SEP	TOTAL
95	0	1	2	0	1	0	1	2	4	5	5	2	23
96	0	0	0	0	0	0	1	1	1	5	4	5	17
97	2	2	1	1	2	3	4	0	2	2	2	3	24
98	2	1	0	0	1	0	1	3	1	3	2	3	17
99	0	0	0	0	0	0	1	3	3	0	5	1	13
2000	0	0	1	0	1	0	0	1	3	2	2	2	12
2001	1	0	2	1	0	0	0	0	0	3	2	0	9
2002	2	0	0	1	1	1	1	1	2	2	4	0	15
2003	0	0	1	0	0	0	0	1	2	3	3	1	11
2004	0	0	0	0	0	0	1	1	2	2	3	2	11
2005	1	0											1
5 Yr. Ave.	0.8	0	0.8	0.4	0.4	0.2	0.4	0.8	1.8	2.4	2.8	1	11.6
MAX	2	0	2	1	1	1	1	1	3	3	4	2	15
MIN	0	0	0	0	0	0	0	0	0	2	2	0	9

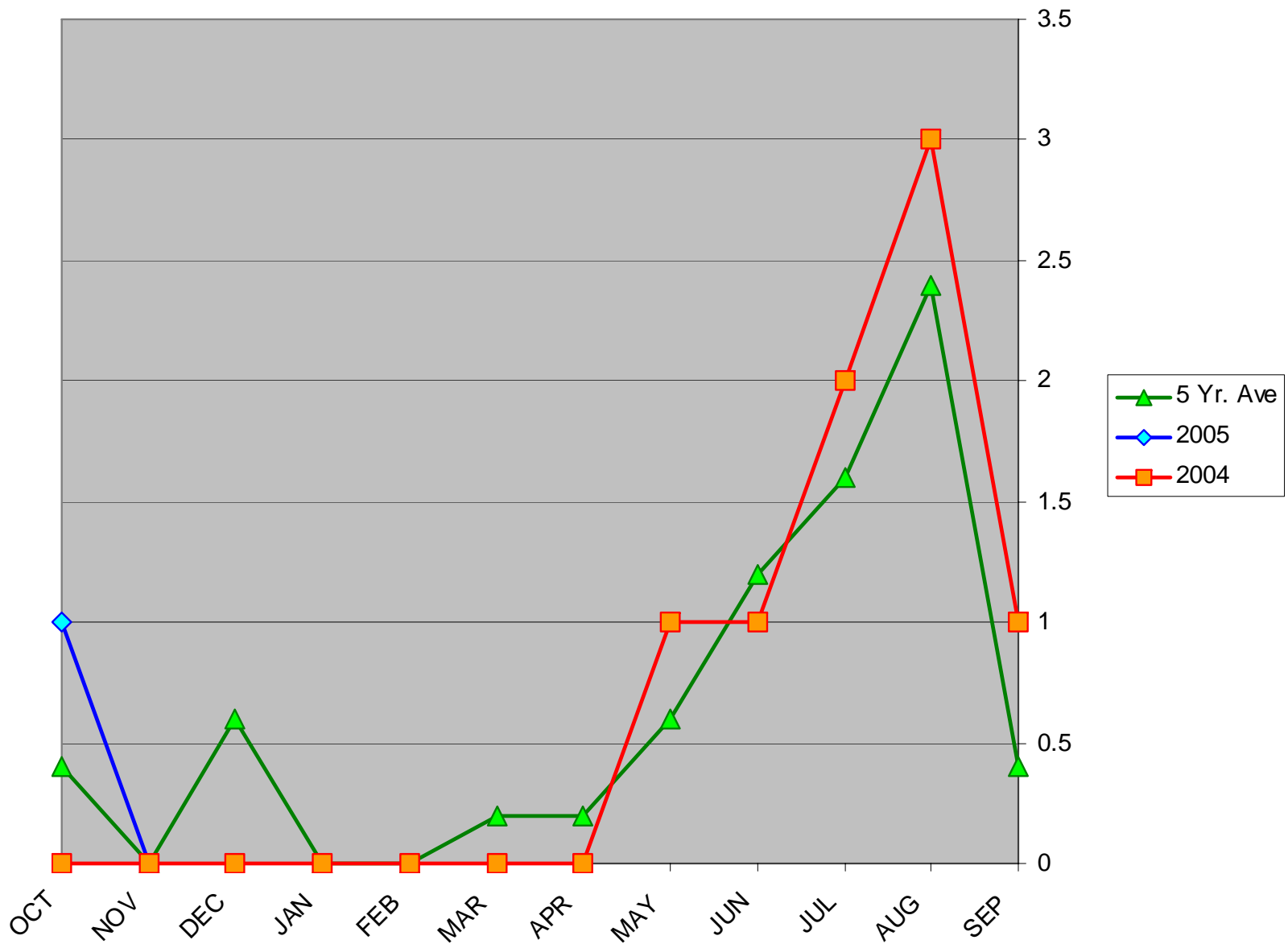
TOTAL FATALITIES (All Events)

FY	OCT	NOV	DEC	JAN	FEB	MAR	APR	MAY	JUN	JUL	AUG	SEP	TOTAL
95	0	1	6	0	1	0	2	3	18	15	8	3	57
96	0	0	0	0	0	0	1	2	1	9	6	11	30
97	4	3	1	1	4	6	11	0	6	8	4	4	52
98	3	8	0	0	1	0	1	6	1	5	2	7	34
99	0	0	0	0	0	0	1	4	9	0	11	1	26
2000	0	0	6	0	6	0	0	1	6	2	4	6	31
2001	1	0	6	2	0	0	0	0	0	11	2	0	22
2002	13	0	0	1	1	1	1	2	2	6	7	0	34
2003	0	0	1	0	0	0	0	4	5	10	7	3	30
2004	0	0	0	0	0	0	1	1	2	8	4	7	23
2005	1	0											1
5 Yr. Ave.	3	0	2.6	0.6	1.4	0.2	0.4	1.6	3	7.4	4.8	3.2	28
MAX	13	0	6	2	6	1	1	4	6	11	7	7	34
MIN	0	0	0	0	0	0	0	0	0	2	2	0	22

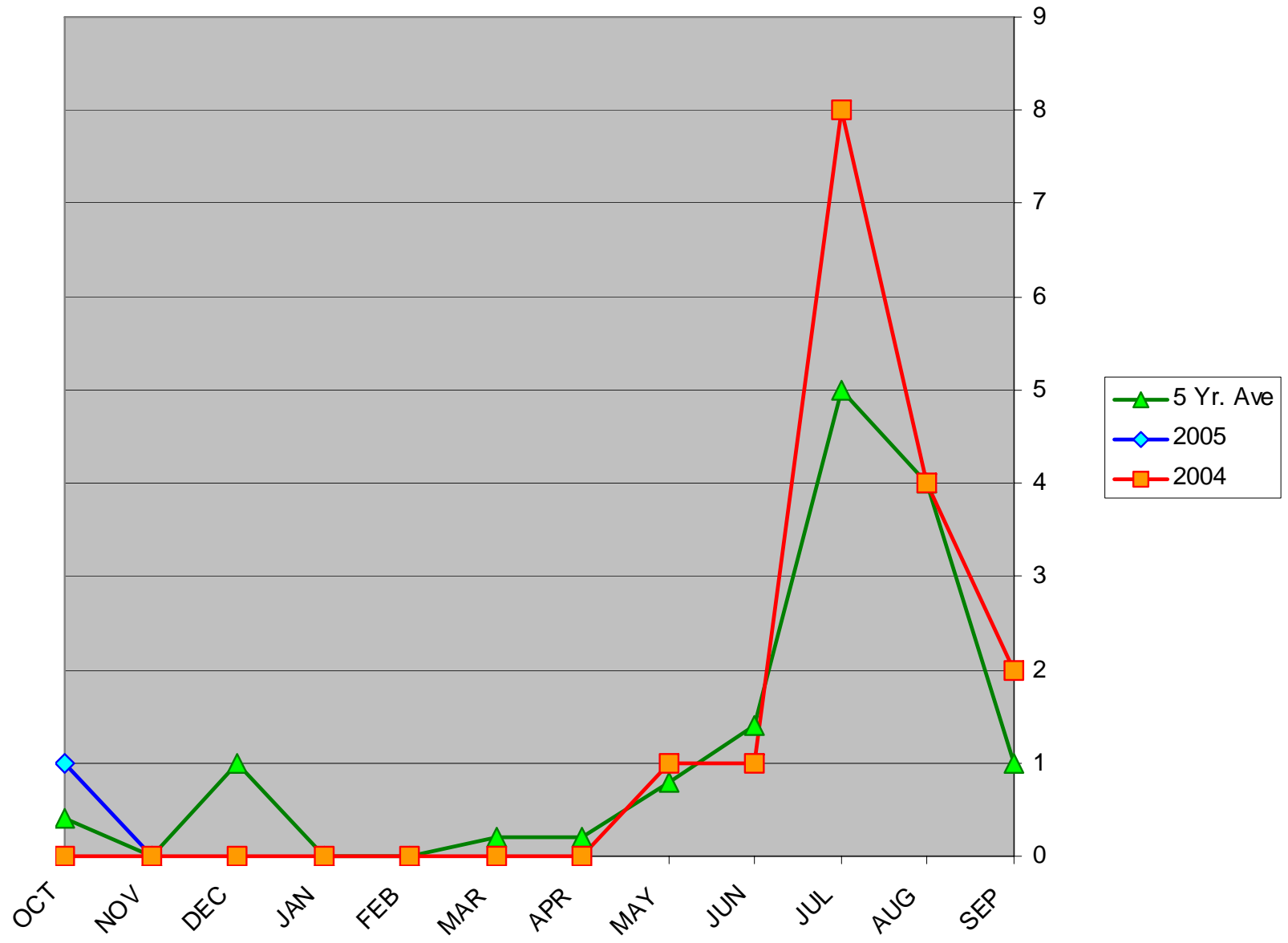
General Aviation Accidents in Alaska



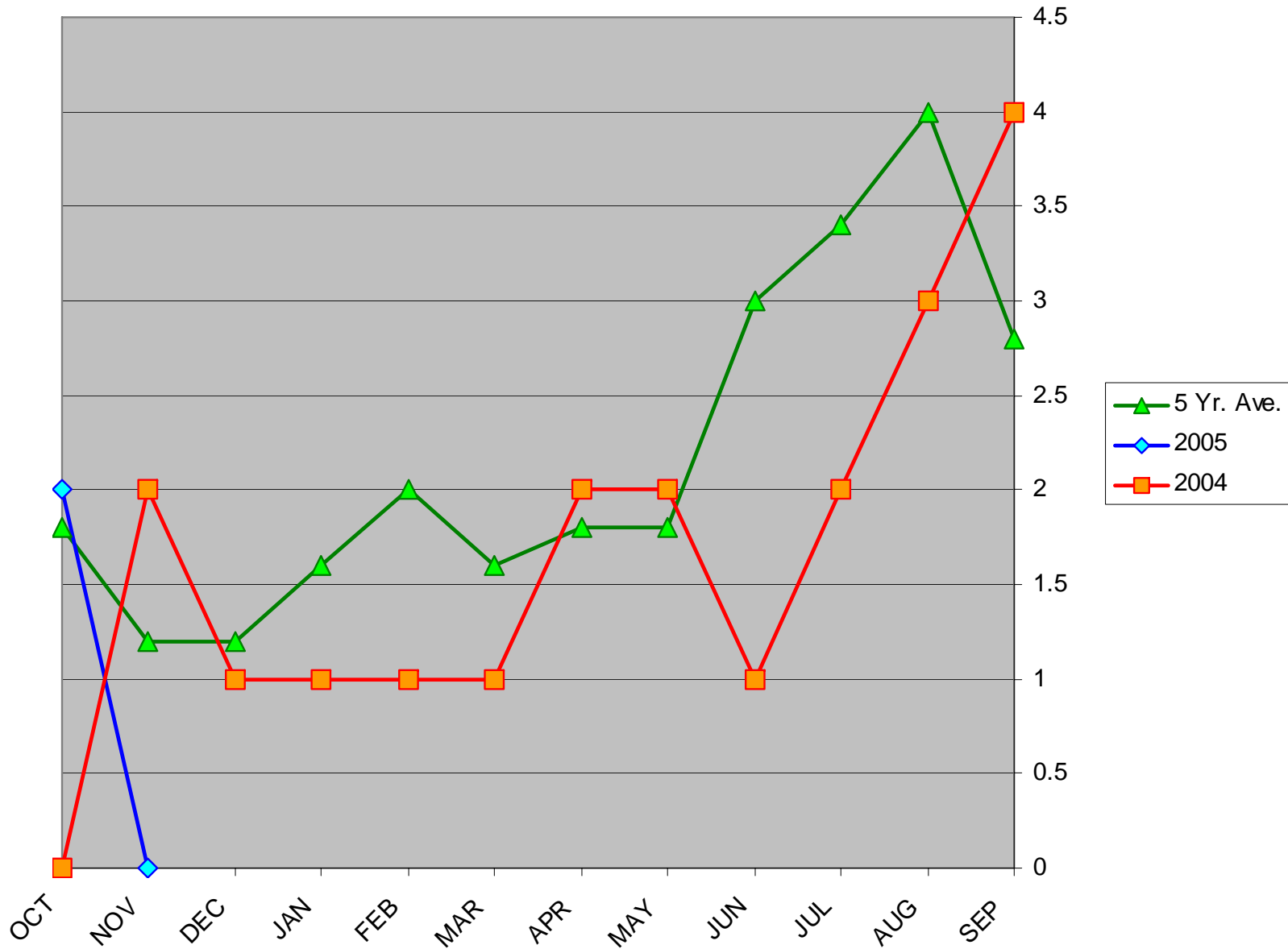
General Aviation Fatal Accidents in Alaska



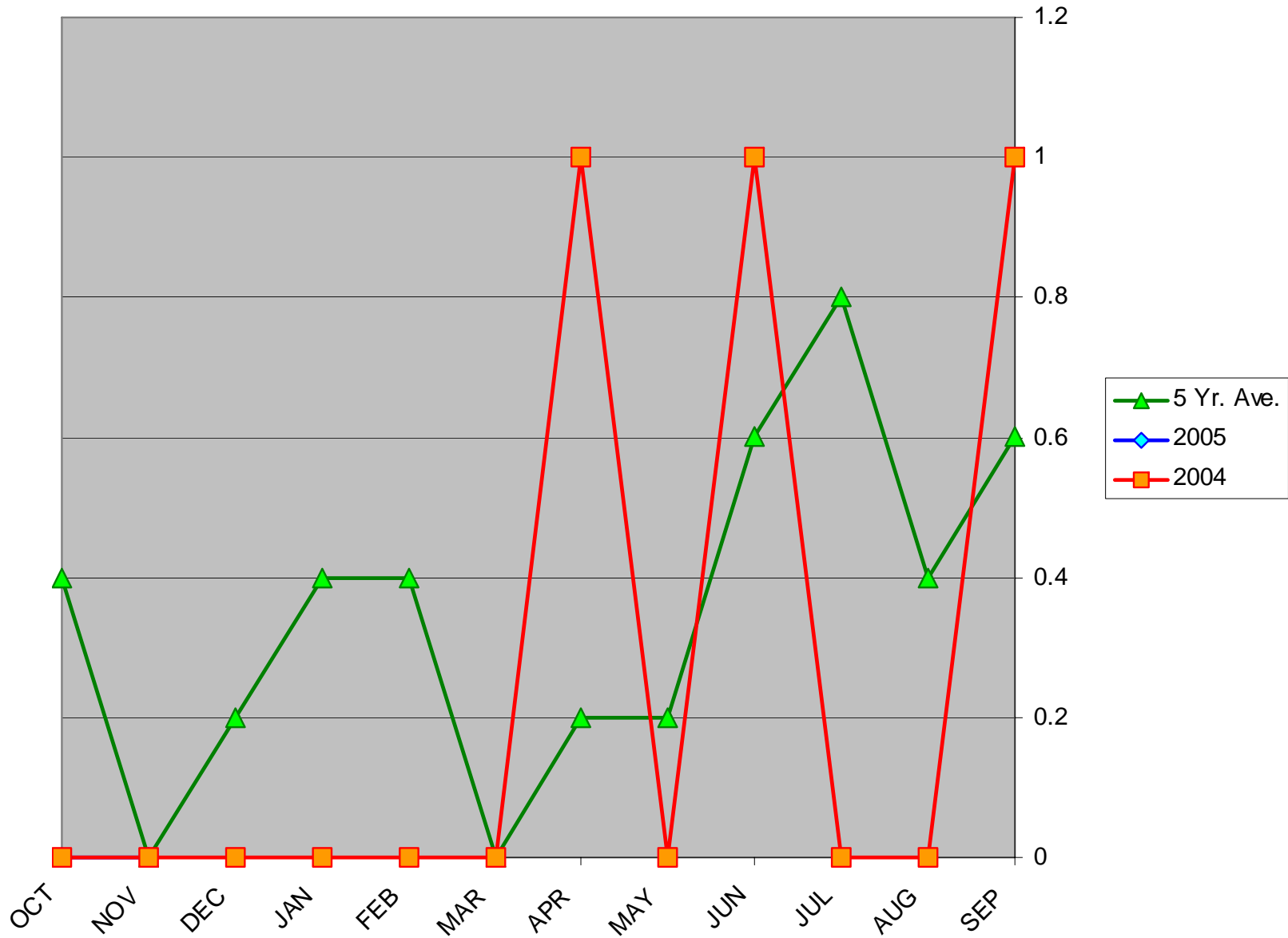
General Aviation Fatalities in Alaska



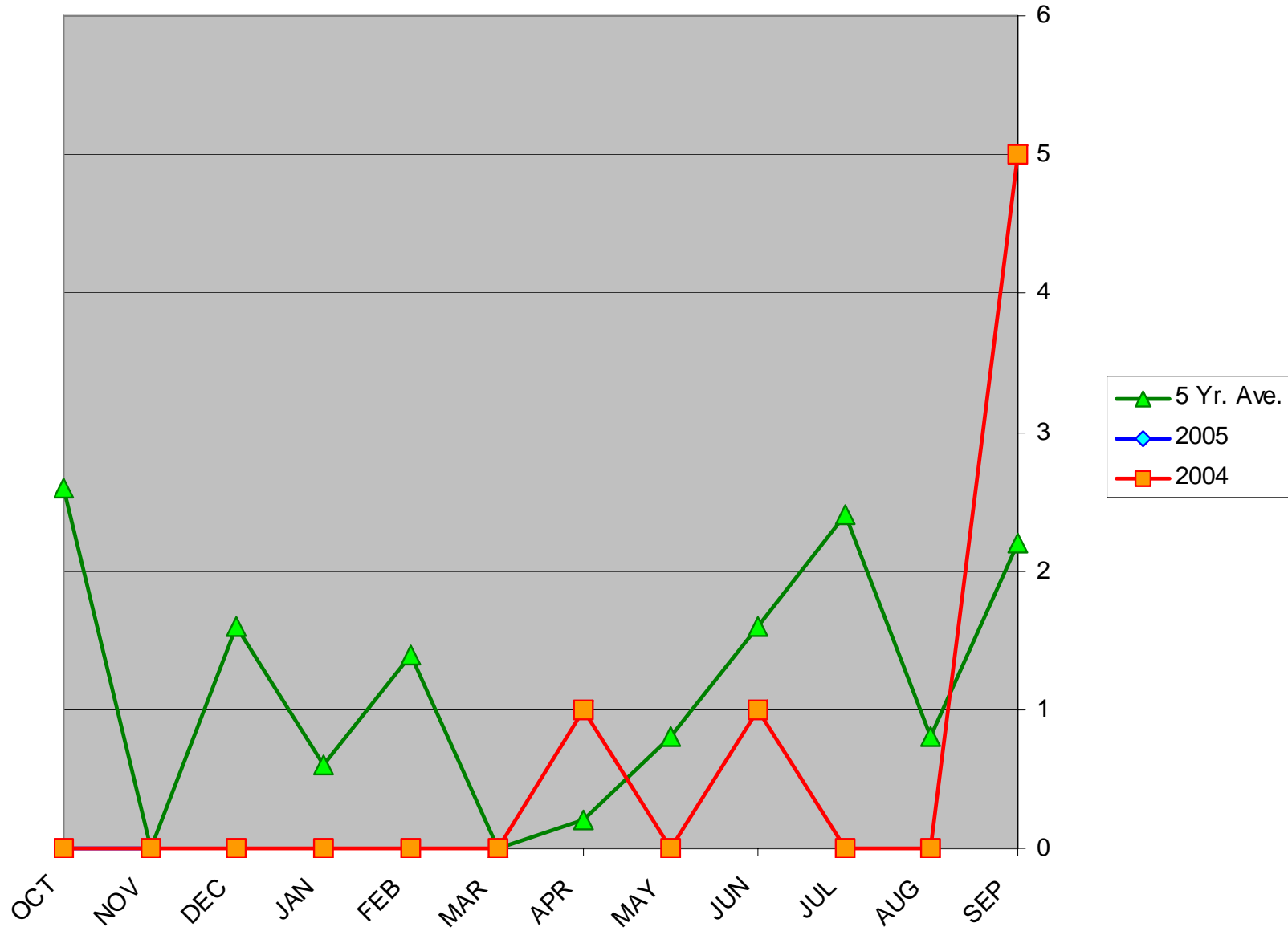
Air Carrier (Part 135) Accidents in Alaska



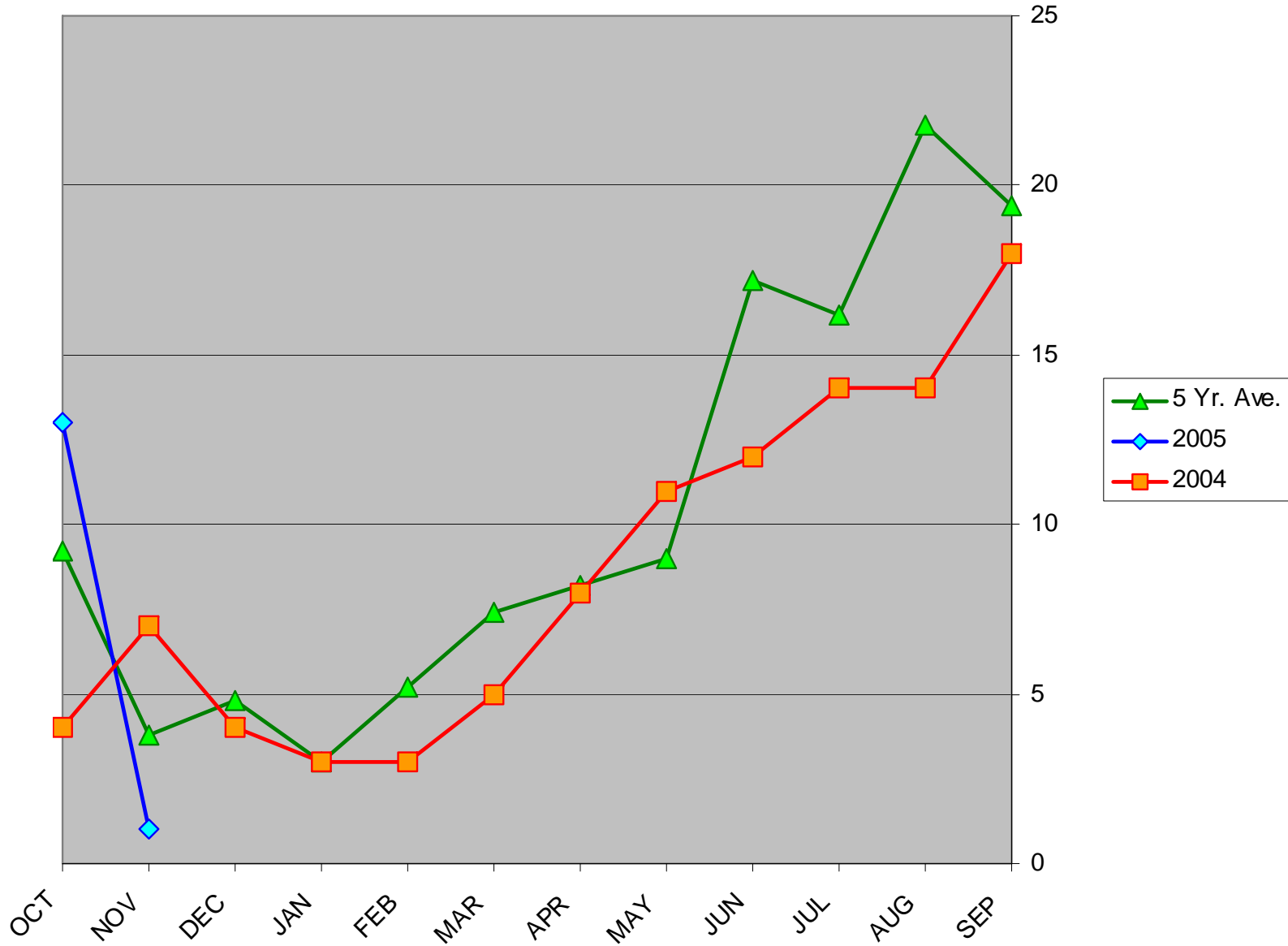
Air Carrier (FAR 135) Fatal Accidents in Alaska



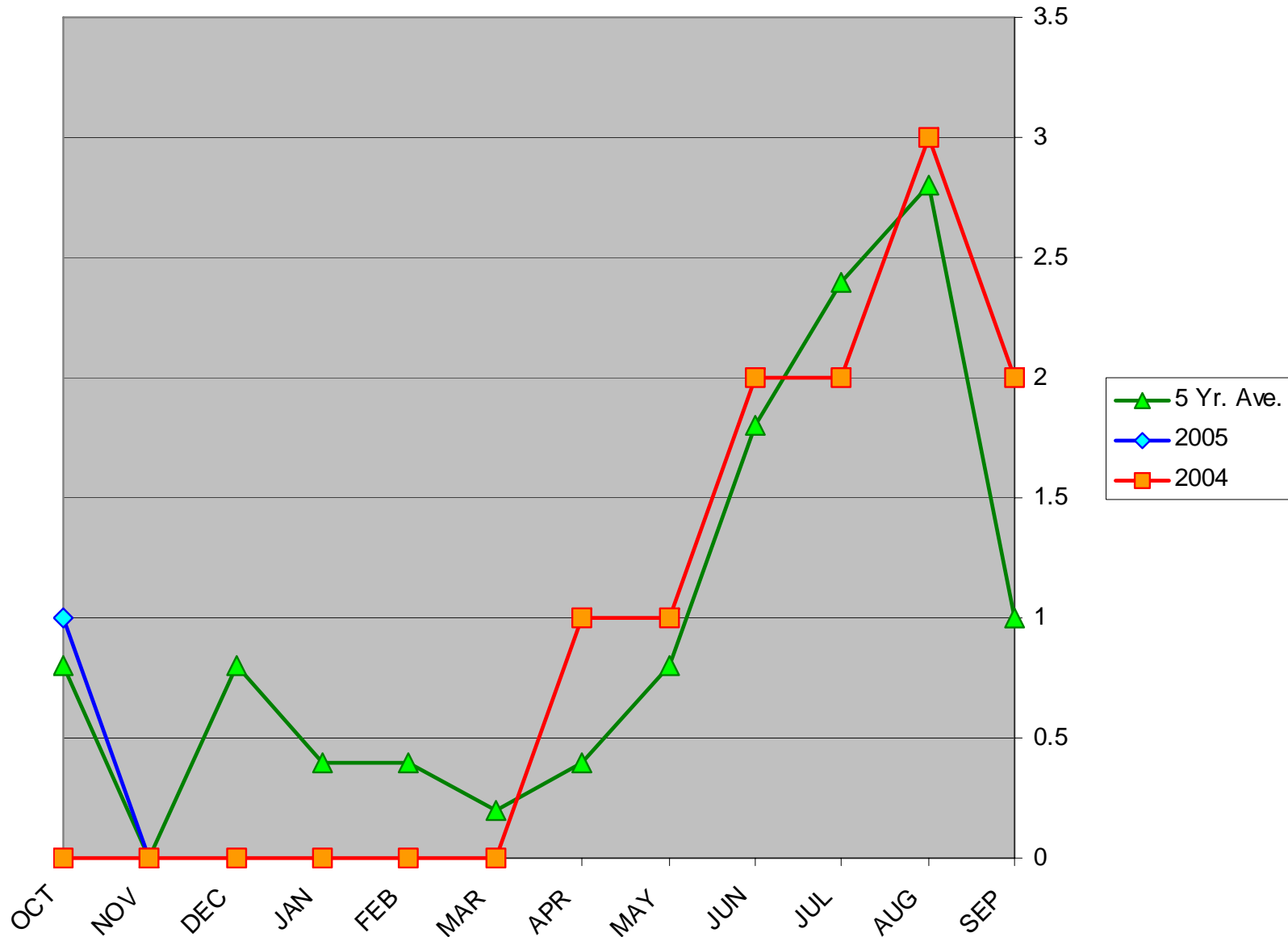
Air Carrier (FAR 135) Fatalities in Alaska



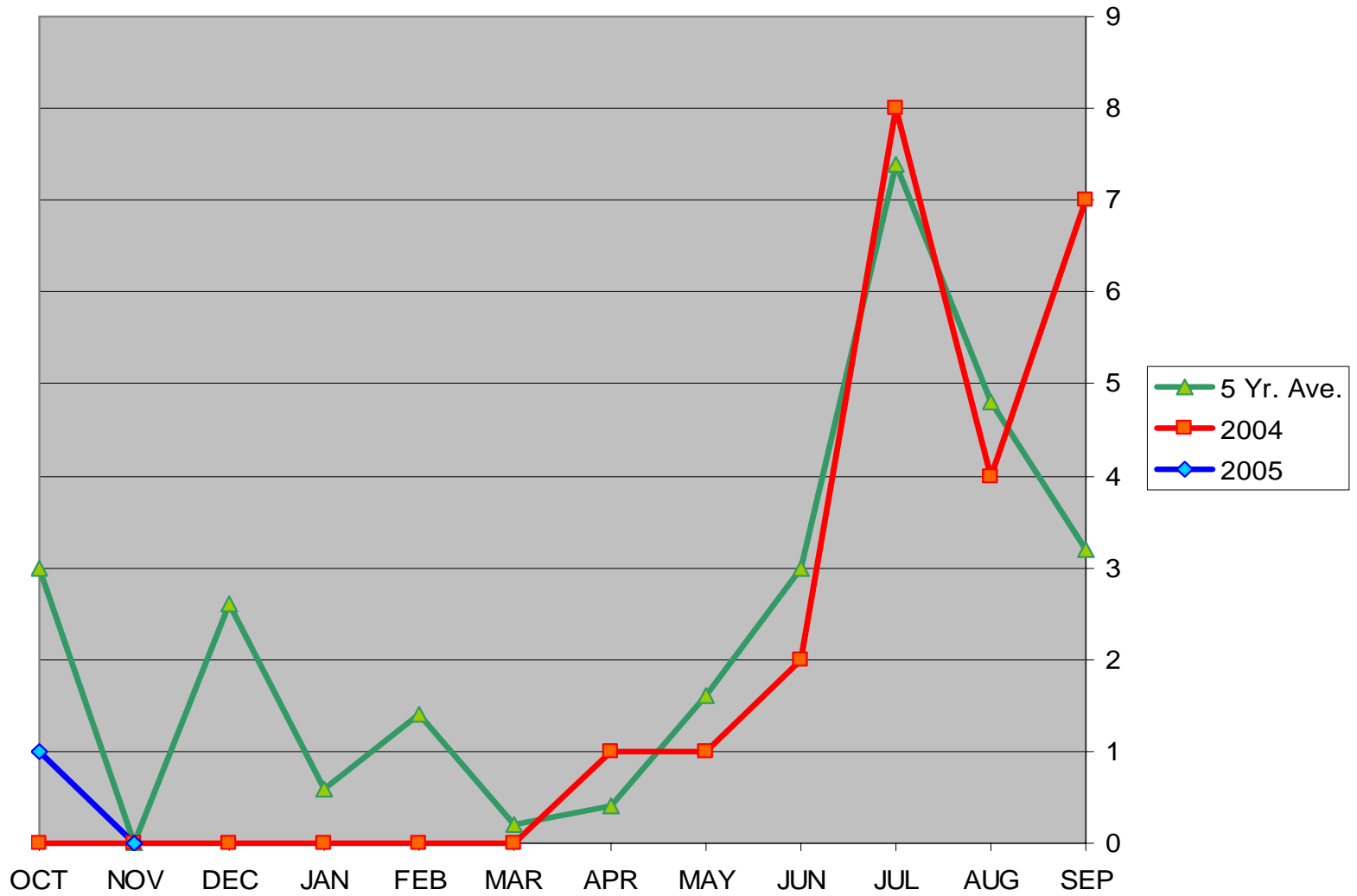
Total Accidents in Alaska



Total Fatal Accidents in Alaska



Total Fatalities in Alaska



AAL-240

System Safety Analysis Branch