

The background is a dark blue gradient with a pattern of concentric circles and a grid of thin lines. The text is centered and white.

# Alaska Accident Statistics

## July 2005

AAL-240

System Safety Analysis Branch

**FAA ALASKAN REGION  
MONTHLY AIRCRAFT ACCIDENT SUMMARY**

**July 2005**

Accident Comparison for the month of July

	<b>2005</b>	<b>2004</b>	<b>High</b>	<b>July 5-YEAR Low</b>	<b>Average</b>
<b>General Aviation</b> (FAR Parts 91,133,137,125,129 & Public Use)	20	11	20	11	14
Fatal Accidents	3	2	3	1	1.8
Fatalities	6	8	9	2	5.8
<b>Air Carrier (FAR Part 135)</b>	7	2	7	2	4.6
Fatal Accidents	0	0	2	0	0.8
Fatalities	0	0	7	0	2.4
<b>Air Carrier (FAR Part 121)</b>	0	0	1	0	0.4
Fatal Accidents	0	0	0	0	0
Fatalities	0	0	0	0	0
<b>Total Accidents</b>	<b>27</b>	<b>14</b>	<b>27</b>	<b>14</b>	<b>19.2</b>
Fatal	3	2	3	2	2.6
Fatalities	6	8	11	6	8.2

This document is for comparison only. Totals frequently change due to reclassification.

## SUMMARY

### July 2005

For the month of July there were 20 General Aviation (GA) accidents, compared with 11 in July 2004. The 5-year average for GA accidents during the month of July is 14 events. There were three fatal GA accidents resulting in six fatalities in July 2005. There were two fatal GA accidents resulting in eight fatalities in July 2004.

For the month of July there were seven Part 135 Air Carrier accidents, compared with two in July of 2004. The 5-year average for 135 Air Carrier accidents during the month of July is 4.6 events. There were no fatal Part 135 Air Carrier accidents for the month of July in 2005 or 2004.

There were no Part 121 events for the month of July in 2005 or 2004.

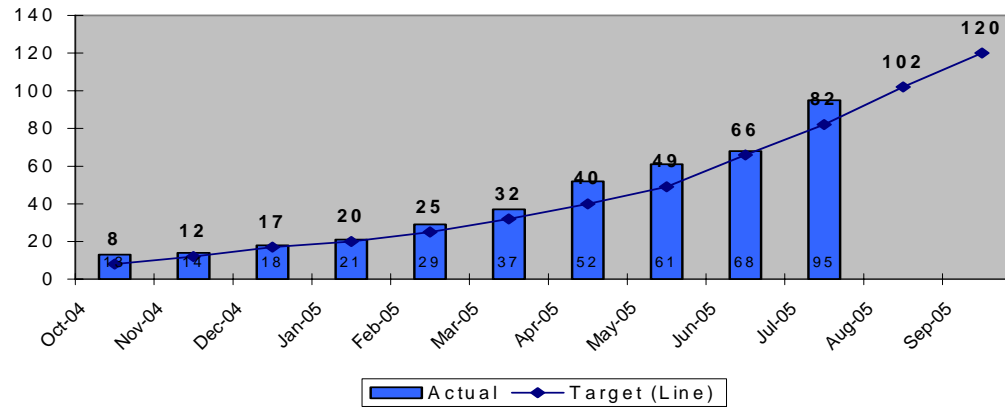
There were a total of 27 aircraft accidents during July 2005. This is compared with 14 in July 2004. The 5-year average for accidents during the month of July is 19.2 events. There were three fatal events in July 2005 resulting in six fatalities. There were two fatal events in July 2004 resulting in eight fatalities.

**Note: Statistics contained in this report July differ from past reports produced by the System Safety Analysis Branch. This is caused by frequent reclassifications of events by the National Transportation Safety Board. The format of this report has been modified to display statistics by fiscal year instead of calendar year.**

**AAL-240**

**System Safety Analysis Branch**

**Status of FAA Performance Targets  
Alaska GA & 135 Accidents  
Fiscal Year to Date  
Cumulative Total**



**Description**

Reduce accidents in Alaska for General Aviation and all Part 135 operations by 20% by Fiscal Year (FY) 2009 (from the 2000-2002 average of 130 accidents per year to no more than 99 accidents per year). (FY 2005 target is no more than 120 accidents)

This chart indicates the monthly total of Alaskan accidents. The graph shows the cumulative number of Alaskan accidents versus the target.

	Actual	Target (Line)	Index Range
Oct-04	13	8	Red
Nov-04	14	12	Red
Dec-04	18	17	Red
Jan-05	21	20	Red
Feb-05	29	25	Red
Mar-05	37	32	Red
Apr-05	52	40	Red
May-05	61	49	Red
Jun-05	68	66	Red
Jul-05	95	82	Red
Aug-05		102	
Sep-05		120	

## GENERAL AVIATION TOTAL

FY	OCT	NOV	DEC	JAN	FEB	MAR	APR	MAY	JUN	JUL	AUG	SEP	TOTAL
95	4	2	7	4	0	8	8	9	26	23	28	17	136
96	11	4	4	2	0	11	18	12	11	13	19	26	131
97	5	1	1	6	5	15	15	11	13	10	16	18	116
98	4	0	2	2	3	8	6	14	21	22	16	23	121
99	4	2	2	2	2	8	9	10	15	17	23	21	115
2000	2	3	2	0	4	3	11	9	17	11	14	18	94
<b>2001</b>	<b>9</b>	<b>3</b>	<b>6</b>	<b>2</b>	<b>4</b>	<b>7</b>	<b>7</b>	<b>5</b>	<b>14</b>	<b>12</b>	<b>26</b>	<b>17</b>	<b>112</b>
<b>2002</b>	<b>3</b>	<b>0</b>	<b>0</b>	<b>1</b>	<b>2</b>	<b>5</b>	<b>2</b>	<b>8</b>	<b>19</b>	<b>12</b>	<b>20</b>	<b>13</b>	<b>85</b>
<b>2003</b>	<b>8</b>	<b>3</b>	<b>6</b>	<b>0</b>	<b>3</b>	<b>7</b>	<b>5</b>	<b>5</b>	<b>10</b>	<b>15</b>	<b>17</b>	<b>20</b>	<b>99</b>
<b>2004</b>	<b>4</b>	<b>5</b>	<b>3</b>	<b>2</b>	<b>2</b>	<b>4</b>	<b>6</b>	<b>8</b>	<b>10</b>	<b>11</b>	<b>11</b>	<b>14</b>	<b>80</b>
<b>2005</b>	<b>11</b>	<b>1</b>	<b>3</b>	<b>3</b>	<b>6</b>	<b>7</b>	<b>13</b>	<b>7</b>	<b>6</b>	<b>20</b>			<b>77</b>
5 Yr. Ave.	7	2.4	3.6	1.6	3.4	6	6.6	6.6	11.8	14	17.6	16.4	94
MAX	11	5	6	3	6	7	13	8	19	20	26	20	112
MIN	3	0	0	0	2	4	2	5	6	11	11	13	80

## GENERAL AVIATION FATAL ACCIDENTS

FY	OCT	NOV	DEC	JAN	FEB	MAR	APR	MAY	JUN	JUL	AUG	SEP	TOTAL
95	0	0	0	0	0	0	1	2	3	4	4	2	16
96	0	0	0	0	0	0	1	1	1	2	3	4	12
97	1	0	0	0	2	3	3	0	1	0	1	2	13
98	1	0	0	0	0	0	1	2	1	3	1	1	10
99	0	0	0	0	0	0	0	2	1	0	5	0	8
2000	0	0	0	0	0	0	0	1	2	2	2	0	7
<b>2001</b>	<b>1</b>	<b>0</b>	<b>2</b>	<b>0</b>	<b>0</b>	<b>0</b>	<b>0</b>	<b>0</b>	<b>0</b>	<b>1</b>	<b>2</b>	<b>0</b>	<b>6</b>
<b>2002</b>	<b>0</b>	<b>0</b>	<b>0</b>	<b>0</b>	<b>0</b>	<b>1</b>	<b>1</b>	<b>1</b>	<b>2</b>	<b>1</b>	<b>3</b>	<b>0</b>	<b>9</b>
<b>2003</b>	<b>0</b>	<b>0</b>	<b>1</b>	<b>0</b>	<b>0</b>	<b>0</b>	<b>0</b>	<b>0</b>	<b>1</b>	<b>2</b>	<b>2</b>	<b>1</b>	<b>7</b>
<b>2004</b>	<b>0</b>	<b>0</b>	<b>0</b>	<b>0</b>	<b>0</b>	<b>0</b>	<b>0</b>	<b>1</b>	<b>1</b>	<b>2</b>	<b>3</b>	<b>1</b>	<b>8</b>
<b>2005</b>	<b>1</b>	<b>0</b>	<b>0</b>	<b>0</b>	<b>1</b>	<b>0</b>	<b>1</b>	<b>0</b>	<b>0</b>	<b>3</b>			<b>6</b>
5 Yr. Ave	0.4	0	0.6	0	0.2	0.2	0.4	0.4	0.8	1.8	2.4	0.4	7.4
MAX	1	0	2	0	1	1	1	1	2	3	3	1	9
MIN	0	0	0	0	0	0	0	0	0	1	2	0	6

## GENERAL AVIATION FATALITIES

FY	OCT	NOV	DEC	JAN	FEB	MAR	APR	MAY	JUN	JUL	AUG	SEP	TOTAL
95	0	0	0	0	0	0	2	3	14	9	6	3	37
96	0	0	0	0	0	0	1	2	1	3	4	8	19
97	1	0	0	0	4	6	6	0	4	0	3	3	27
98	1	0	0	0	0	0	1	4	1	5	1	1	14
99	0	0	0	0	0	0	0	3	1	0	11	0	15
2000	0	0	0	0	0	0	0	1	2	2	4	0	9
2001	1	0	4	0	0	0	0	0	0	4	2	0	11
2002	0	0	0	0	0	1	1	2	2	2	5	0	13
2003	0	0	1	0	0	0	0	0	2	9	5	3	20
2004	0	0	0	0	0	0	0	1	1	8	4	2	16
2005	1	0	0	0	3	0	1	0	0	6			11
<b>5 Yr.</b>													
<b>Ave</b>	0.4	0	1	0	0.6	0.2	0.4	0.6	1	5.8	4	1	13.8
<b>MAX</b>	1	0	4	0	3	1	1	2	2	9	5	3	20
<b>MIN</b>	0	0	0	0	0	0	0	0	0	2	2	0	9

AAL-240

System Safety Analysis Branch

## AIR CARRIER TOTAL (FAR 135)

FY	OCT	NOV	DEC	JAN	FEB	MAR	APR	MAY	JUN	JUL	AUG	SEP	TOTAL
95	1	3	4	2	2	4	0	4	3	4	3	2	32
96	0	2	3	0	0	3	2	3	2	4	7	7	33
97	1	2	3	2	2	2	6	1	2	7	5	7	40
98	2	2	1	1	4	0	3	6	5	2	3	8	37
99	4	0	3	3	1	2	7	0	5	1	3	5	34
2000	6	1	4	1	4	4	1	2	2	1	3	4	33
<b>2001</b>	<b>2</b>	<b>3</b>	<b>1</b>	<b>4</b>	<b>0</b>	<b>0</b>	<b>3</b>	<b>2</b>	<b>1</b>	<b>6</b>	<b>3</b>	<b>1</b>	<b>26</b>
<b>2002</b>	<b>3</b>	<b>0</b>	<b>0</b>	<b>1</b>	<b>4</b>	<b>3</b>	<b>1</b>	<b>1</b>	<b>8</b>	<b>4</b>	<b>8</b>	<b>3</b>	<b>36</b>
<b>2003</b>	<b>2</b>	<b>1</b>	<b>0</b>	<b>1</b>	<b>1</b>	<b>0</b>	<b>2</b>	<b>2</b>	<b>3</b>	<b>4</b>	<b>3</b>	<b>2</b>	<b>21</b>
<b>2004</b>	<b>0</b>	<b>2</b>	<b>1</b>	<b>1</b>	<b>1</b>	<b>1</b>	<b>2</b>	<b>2</b>	<b>1</b>	<b>2</b>	<b>3</b>	<b>4</b>	<b>20</b>
<b>2005</b>	<b>2</b>	<b>0</b>	<b>1</b>	<b>0</b>	<b>2</b>	<b>1</b>	<b>2</b>	<b>2</b>	<b>1</b>	<b>7</b>			<b>18</b>
5 Yr. Ave.	1.8	1.2	0.6	1.4	1.6	1	2	1.8	2.8	4.6	4	2.8	27.2
MAX	3	3	1	4	4	3	3	2	8	7	8	4	36
MIN	0	0	0	0	0	0	1	1	1	2	3	1	20

**AAI-240**

**System Safety Analysis Branch**



## AIR CARRIER FATAL ACCIDENTS (FAR 135)

FY	OCT	NOV	DEC	JAN	FEB	MAR	APR	MAY	JUN	JUL	AUG	SEP	TOTAL
95	0	1	2	0	1	0	0	0	1	1	1	0	7
96	0	0	0	0	0	0	0	0	0	1	1	1	3
97	1	2	1	1	0	0	1	0	1	2	1	1	11
98	1	1	0	0	1	0	0	1	0	0	1	2	7
99	0	0	0	0	0	0	1	0	2	0	0	1	4
<b>2000</b>	0	0	1	0	1	0	0	0	1	0	0	2	5
<b>2001</b>	0	0	0	1	0	0	0	0	0	2	0	0	3
<b>2002</b>	2	0	0	1	1	0	0	0	0	1	1	0	6
<b>2003</b>	0	0	0	0	0	0	0	1	1	1	1	0	4
<b>2004</b>	0	0	0	0	0	0	1	0	1	0	0	1	3
<b>2005</b>	0	0	0	0	0	0	0	0	0	0			0
5 Yr. Ave.	0.4	0	0	0.4	0.2	0	0.2	0.2	0.4	0.8	0.4	0.6	4.2
MAX	2	0	0	1	1	0	1	1	1	2	1	2	6
MIN	0	0	0	0	0	0	0	0	0	0	0	0	3

**AAI-240**

**System Safety Analysis Branch**

## AIR CARRIER FATALITIES (FAR 135)

FY	OCT	NOV	DEC	JAN	FEB	MAR	APR	MAY	JUN	JUL	AUG	SEP	TOTAL
95	0	1	6	0	1	0	0	0	4	6	2	0	20
96	0	0	0	0	0	0	0	0	0	1	2	3	6
97	3	3	1	1	0	0	5	0	2	8	1	1	25
98	2	8	0	0	1	0	0	2	0	0	1	6	20
99	0	0	0	0	0	0	1	0	8	0	0	1	10
<b>2000</b>	0	0	6	0	6	0	0	0	4	0	0	6	22
<b>2001</b>	0	0	2	2	0	0	0	0	0	7	0	0	11
<b>2002</b>	13	0	0	1	1	0	0	0	0	4	2	0	21
<b>2003</b>	0	0	0	0	0	0	0	4	3	1	2	0	10
<b>2004</b>	0	0	0	0	0	0	1	0	1	0	0	5	7
<b>2005</b>	0	0	0	0	0	0	0	0	0	0			0
5 Yr. Ave.	2.6	0	0.4	0.6	0.2	0	0.2	0.8	0.8	2.4	0.8	2.2	14.2
MAX	13	0	2	2	1	0	1	4	3	7	2	6	22
MIN	0	0	0	0	0	0	0	0	0	0	0	0	7

**AAI-240**

**System Safety Analysis Branch**

## SUBTOTAL AK GOAL ACCIDENTS (GA & FAR 135)

FY	OCT	NOV	DEC	JAN	FEB	MAR	APR	MAY	JUN	JUL	AUG	SEP	TOTAL
95	5	5	11	6	2	12	8	13	29	27	31	19	168
96	11	6	7	2	0	14	20	15	13	17	26	33	164
97	6	3	4	8	7	17	21	12	15	17	21	25	156
98	6	2	3	3	7	8	9	20	26	24	19	31	158
99	8	2	5	5	3	10	16	10	20	18	26	26	149
<b>2000</b>	8	4	6	1	8	7	12	11	19	12	17	22	127
<b>2001</b>	11	6	7	6	4	7	10	7	15	18	29	18	138
<b>2002</b>	6	0	0	2	6	8	3	9	27	16	28	16	121
<b>2003</b>	10	4	6	1	4	7	7	7	13	19	20	22	120
<b>2004</b>	4	7	4	3	3	5	8	10	11	13	14	18	100
<b>2005</b>	13	1	4	3	8	8	15	9	7	27			95
5 Yr. Ave.	8.8	3.6	4.2	3	5	7	8.6	8.4	14.6	18.6	21.6	19.2	121.2
MAX	13	7	7	6	8	8	15	10	27	27	29	22	138
MIN	4	0	0	1	3	5	3	7	7	13	14	16	100

**AAI-240**

**System Safety Analysis Branch**

## SUBTOTAL AK GOAL FATAL ACCIDENTS (GA & FAR 135)

FY	OCT	NOV	DEC	JAN	FEB	MAR	APR	MAY	JUN	JUL	AUG	SEP	TOTAL
95	0	1	2	0	1	0	1	2	4	5	5	2	23
96	0	0	0	0	0	0	1	1	1	3	4	5	15
97	2	2	1	1	2	3	4	0	2	2	2	3	24
98	2	1	0	0	1	0	1	3	1	3	2	3	17
99	0	0	0	0	0	0	1	2	3	0	5	1	12
<b>2000</b>	0	0	1	0	1	0	0	1	3	2	2	2	<b>12</b>
<b>2001</b>	1	0	2	1	0	0	0	0	0	3	2	0	<b>9</b>
<b>2002</b>	2	0	0	1	1	1	1	1	2	2	4	0	<b>15</b>
<b>2003</b>	0	0	1	0	0	0	0	1	2	3	3	1	<b>11</b>
<b>2004</b>	0	0	0	0	0	0	1	1	2	2	3	2	<b>11</b>
<b>2005</b>	1	0	0	0	1	0	1	0	0	3			<b>6</b>
5 Yr. Ave.	0.8	0	0.6	0.4	0.4	0.2	0.6	0.6	1.2	2.6	2.8	1	11.6
MAX	2	0	2	1	1	1	1	1	2	3	4	2	15
MIN	0	0	0	0	0	0	0	0	0	2	2	0	9

**AAL-240**

**System Safety Analysis Branch**

### SUBTOTAL AK Goal FATALITIES (GA & FAR 135)

FY	OCT	NOV	DEC	JAN	FEB	MAR	APR	MAY	JUN	JUL	AUG	SEP	TOTAL
95	0	1	6	0	1	0	2	3	18	15	8	3	57
96	0	0	0	0	0	0	1	2	1	4	6	11	25
97	4	3	1	1	4	6	11	0	6	8	4	4	52
98	3	8	0	0	1	0	1	6	1	5	2	7	34
99	0	0	0	0	0	0	1	3	9	0	11	1	25
2000	0	0	6	0	6	0	0	1	6	2	4	6	31
2001	1	0	6	2	0	0	0	0	0	11	2	0	22
2002	13	0	0	1	1	1	1	2	2	6	7	0	34
2003	0	0	1	0	0	0	0	4	5	10	7	3	30
2004	0	0	0	0	0	0	1	1	2	8	4	7	23
2005	1	0	0	0	3	0	1	0	0	6			11
5 Yr. Ave.	3	0	1.4	0.6	0.8	0.2	0.6	1.4	1.8	8.2	4.8	3.2	28
MAX	13	0	6	2	3	1	1	4	5	11	7	7	34
MIN	0	0	0	0	0	0	0	0	0	6	2	0	22

**AAL-240**

**System Safety Analysis Branch**

## AIR CARRIER TOTAL (FAR 121)

FY	OCT	NOV	DEC	JAN	FEB	MAR	APR	MAY	JUN	JUL	AUG	SEP	TOTAL
95	0	1	1	0	0	0	0	0	1	1	0	0	4
96	0	0	0	0	2	0	0	1	0	2	0	0	5
97	0	0	1	0	0	0	1	0	0	0	1	0	3
98	1	0	0	1	0	0	0	0	1	0	1	0	4
99	0	2	0	0	0	0	0	2	0	1	2	0	7
<b>2000</b>	0	0	0	0	0	0	0	0	0	0	0	0	0
<b>2001</b>	2	1	0	1	0	0	0	0	0	1	1	1	7
<b>2002</b>	0	0	1	0	1	2	0	0	0	1	0	0	5
<b>2003</b>	0	0	0	1	0	1	1	0	0	0	0	0	3
<b>2004</b>	0	0	0	0	0	0	0	1	0	0	0	0	1
<b>2005</b>	0	0	0	1	0	0	0	0	1	0			2
5 Yr. Ave.	0.4	0.2	0.2	0.6	0.2	0.6	0.2	0.2	0.2	0.4	0.2	0.2	3.2
MAX	2	1	1	1	1	2	1	1	1	1	1	1	7
MIN	0	0	0	0	0	0	0	0	0	0	0	0	0

**AAI-240**

**System Safety Analysis Branch**

## AIR CARRIER FATAL ACCIDENTS (FAR 121)

FY	OCT	NOV	DEC	JAN	FEB	MAR	APR	MAY	JUN	JUL	AUG	SEP	TOTAL
95	0	0	0	0	0	0	0	0	0	0	0	0	0
96	0	0	0	0	0	0	0	0	0	2	0	0	2
97	0	0	0	0	0	0	0	0	0	0	0	0	0
98	0	0	0	0	0	0	0	0	0	0	0	0	0
99	0	0	0	0	0	0	0	1	0	0	0	0	1
<b>2000</b>	0	0	0	0	0	0	0	0	0	0	0	0	0
<b>2001</b>	0	0	0	0	0	0	0	0	0	0	0	0	0
<b>2002</b>	0	0	0	0	0	0	0	0	0	0	0	0	0
<b>2003</b>	0	0	0	0	0	0	0	0	0	0	0	0	0
<b>2004</b>	0	0	0	0	0	0	0	0	0	0	0	0	0
<b>2005</b>	0	0	0	0	0	0	0	0	0	0			0
5 Yr. Ave.	0	0	0	0	0	0	0	0	0	0	0	0	0
MAX	0	0	0	0	0	0	0	0	0	0	0	0	0
MIN	0	0	0	0	0	0	0	0	0	0	0	0	0

## AIR CARRIER FATALITIES (FAR 121)

FY	OCT	NOV	DEC	JAN	FEB	MAR	APR	MAY	JUN	JUL	AUG	SEP	TOTAL
95	0	0	0	0	0	0	0	0	0	0	0	0	0
96	0	0	0	0	0	0	0	0	0	5	0	0	5
97	0	0	0	0	0	0	0	0	0	0	0	0	0
98	0	0	0	0	0	0	0	0	0	0	0	0	0
99	0	0	0	0	0	0	0	1	0	0	0	0	1
<b>2000</b>	0	0	0	0	0	0	0	0	0	0	0	0	0
<b>2001</b>	0	0	0	0	0	0	0	0	0	0	0	0	0
<b>2002</b>	0	0	0	0	0	0	0	0	0	0	0	0	0
<b>2003</b>	0	0	0	0	0	0	0	0	0	0	0	0	0
<b>2004</b>	0	0	0	0	0	0	0	0	0	0	0	0	0
<b>2005</b>	0	0	0	0	0	0	0	0	0	0			0
5 Yr. Ave.	0	0	0	0	0	0	0	0	0	0	0	0	0
MAX	0	0	0	0	0	0	0	0	0	0	0	0	0
MIN	0	0	0	0	0	0	0	0	0	0	0	0	0

AAL-240

System Safety Analysis Branch



## TOTAL ACCIDENTS All Events

FY	OCT	NOV	DEC	JAN	FEB	MAR	APR	MAY	JUN	JUL	AUG	SEP	TOTAL
95	5	6	12	6	2	12	8	13	30	28	31	19	172
96	11	6	7	2	2	14	20	16	13	19	26	33	169
97	6	3	5	8	7	17	22	12	15	17	22	25	159
98	7	2	3	4	7	8	9	20	27	24	20	31	162
99	8	4	5	5	3	10	16	12	20	19	28	26	156
<b>2000</b>	8	4	6	1	8	7	12	11	19	12	17	22	127
<b>2001</b>	13	7	7	7	4	7	10	7	15	19	30	19	145
<b>2002</b>	6	0	1	2	7	10	3	9	27	17	28	16	126
<b>2003</b>	10	4	6	2	4	8	8	7	13	19	20	22	123
<b>2004</b>	4	7	4	3	3	5	8	11	12	14	14	18	103
<b>2005</b>	13	1	4	4	8	8	15	9	8	27			97
5 Yr. Ave.	9.2	3.8	4.4	3.6	5.2	7.6	8.8	8.6	15	19.2	21.8	19.4	124.8
MAX	13	7	7	7	8	10	15	11	27	27	30	22	145
MIN	4	0	1	2	3	5	3	7	8	14	14	16	103

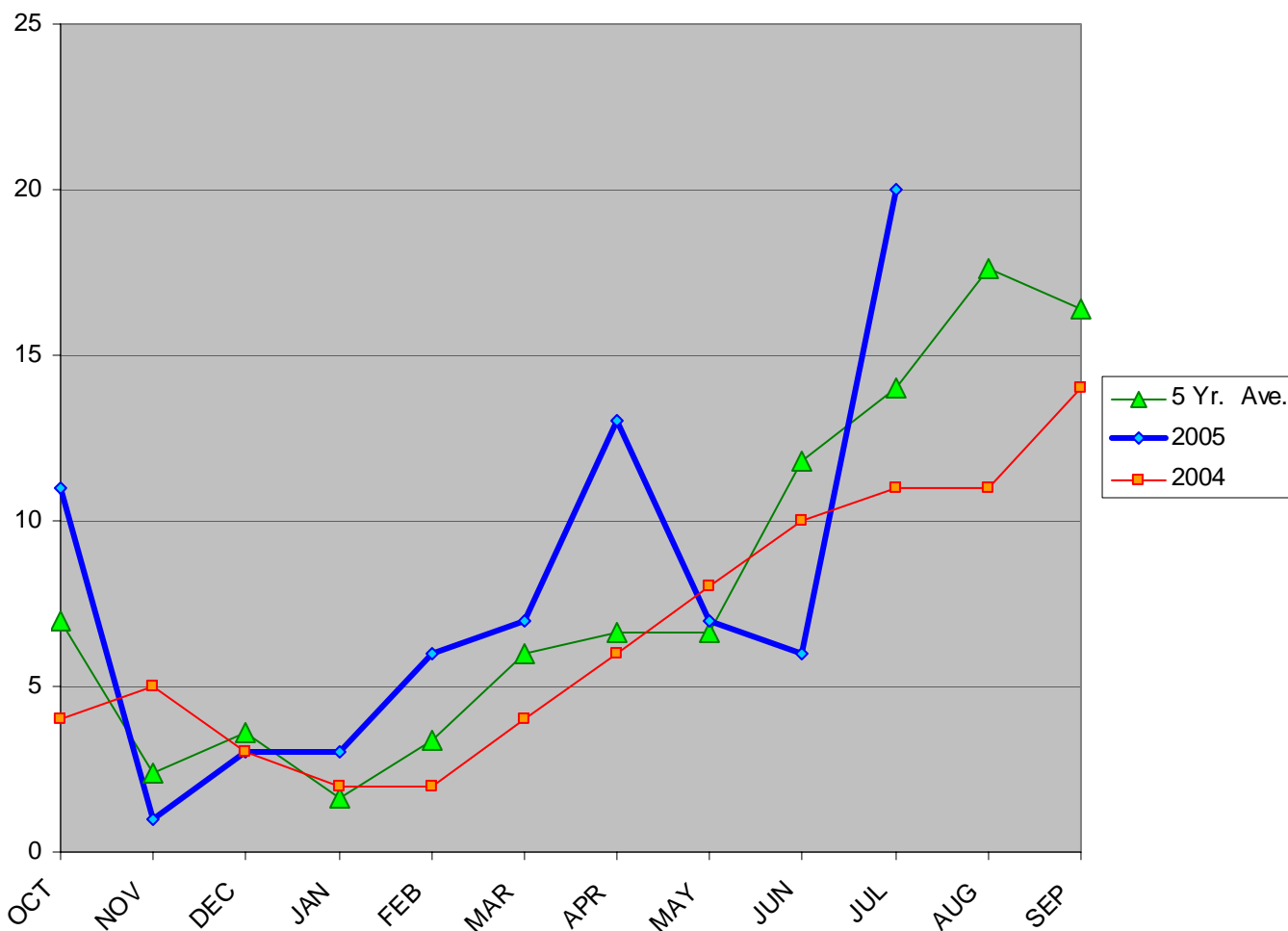
## TOTAL FATAL ACCIDENTS All Events

FY	OCT	NOV	DEC	JAN	FEB	MAR	APR	MAY	JUN	JUL	AUG	SEP	TOTAL
95	0	1	2	0	1	0	1	2	4	5	5	2	23
96	0	0	0	0	0	0	1	1	1	5	4	5	17
97	2	2	1	1	2	3	4	0	2	2	2	3	24
98	2	1	0	0	1	0	1	3	1	3	2	3	17
99	0	0	0	0	0	0	1	3	3	0	5	1	13
<b>2000</b>	0	0	1	0	1	0	0	1	3	2	2	2	<b>12</b>
<b>2001</b>	1	0	2	1	0	0	0	0	0	3	2	0	<b>9</b>
<b>2002</b>	2	0	0	1	1	1	1	1	2	2	4	0	<b>15</b>
<b>2003</b>	0	0	1	0	0	0	0	1	2	3	3	1	<b>11</b>
<b>2004</b>	0	0	0	0	0	0	1	1	2	2	3	2	<b>11</b>
<b>2005</b>	1	0	0	0	1	0	1	0	0	3			<b>6</b>
5 Yr. Ave.	0.8	0	0.6	0.4	0.4	0.2	0.6	0.6	1.2	2.6	2.8	1	11.6
MAX	2	0	2	1	1	1	1	1	2	3	4	2	15
MIN	0	0	0	0	0	0	0	0	0	2	2	0	9

## TOTAL FATALITIES (All Events)

FY	OCT	NOV	DEC	JAN	FEB	MAR	APR	MAY	JUN	JUL	AUG	SEP	TOTAL
95	0	1	6	0	1	0	2	3	18	15	8	3	57
96	0	0	0	0	0	0	1	2	1	9	6	11	30
97	4	3	1	1	4	6	11	0	6	8	4	4	52
98	3	8	0	0	1	0	1	6	1	5	2	7	34
99	0	0	0	0	0	0	1	4	9	0	11	1	26
<b>2000</b>	0	0	6	0	6	0	0	1	6	2	4	6	<b>31</b>
<b>2001</b>	1	0	6	2	0	0	0	0	0	11	2	0	<b>22</b>
<b>2002</b>	13	0	0	1	1	1	1	2	2	6	7	0	<b>34</b>
<b>2003</b>	0	0	1	0	0	0	0	4	5	10	7	3	<b>30</b>
<b>2004</b>	0	0	0	0	0	0	1	1	2	8	4	7	<b>23</b>
<b>2005</b>	1	0	0	0	3	0	1	0	0	6			<b>11</b>
5 Yr. Ave.	3	0	1.4	0.6	0.8	0.2	0.6	1.4	1.8	8.2	4.8	3.2	28
MAX	13	0	6	2	3	1	1	4	5	11	7	7	34
MIN	0	0	0	0	0	0	0	0	0	6	2	0	22

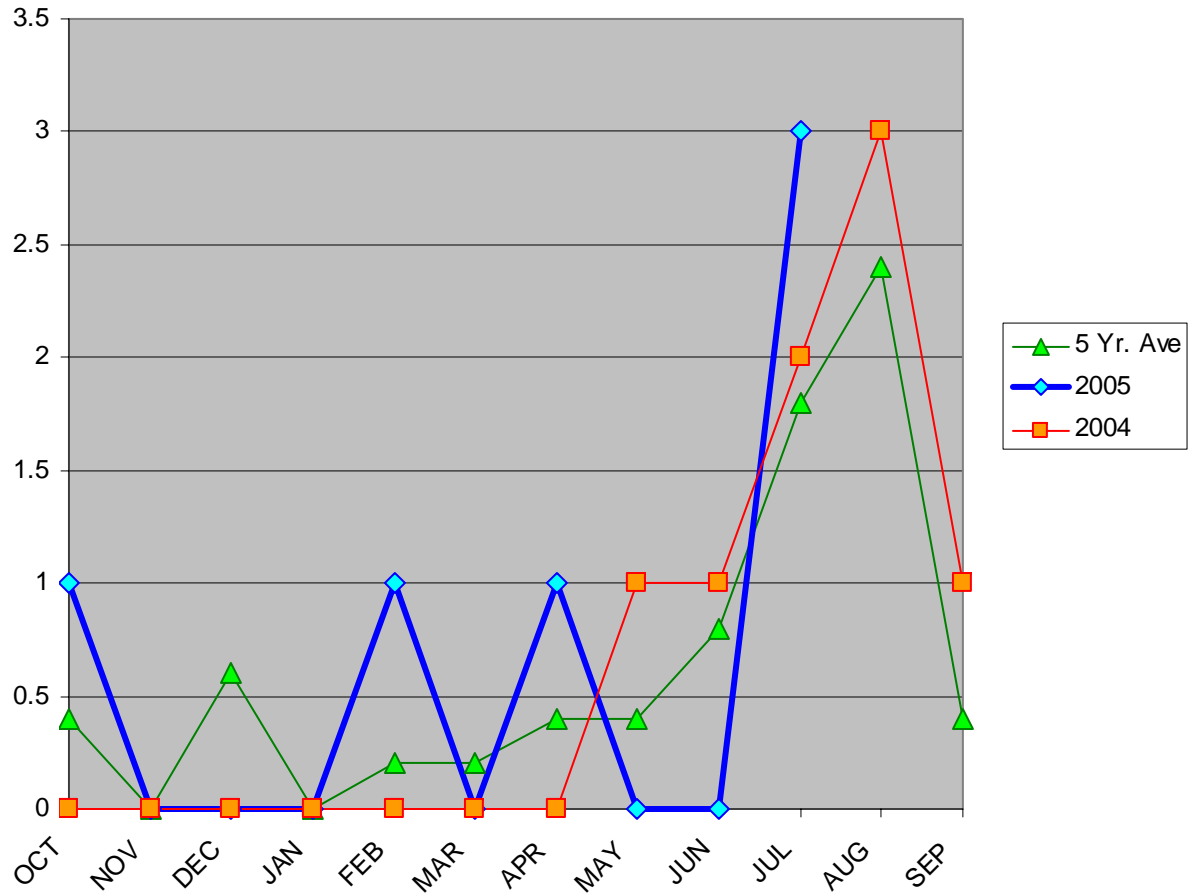
## General Aviation Accidents in Alaska



AAL-240

System Safety Analysis Branch

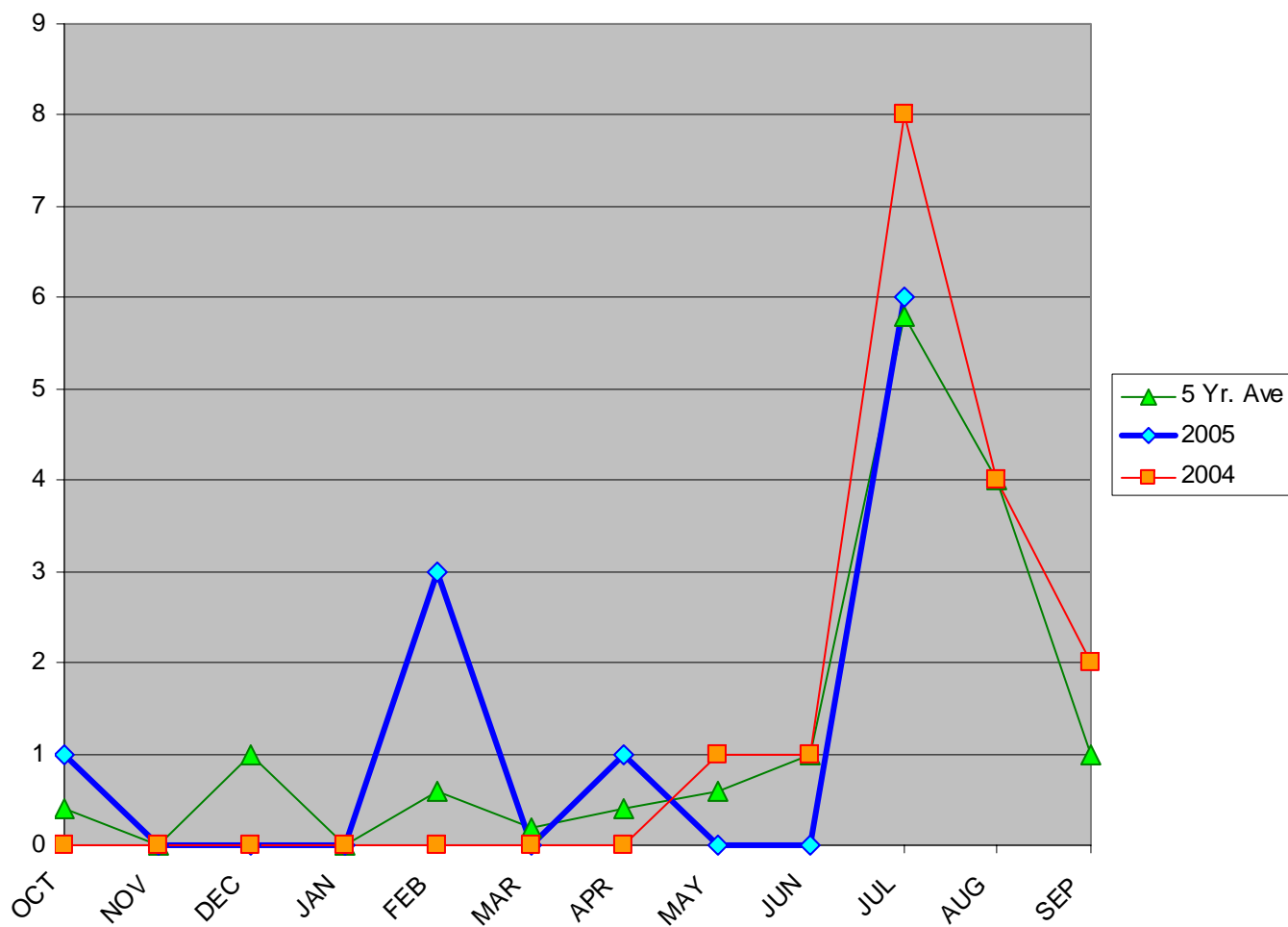
## General Aviation Fatal Accidents in Alaska



AAL-240

System Safety Analysis Branch

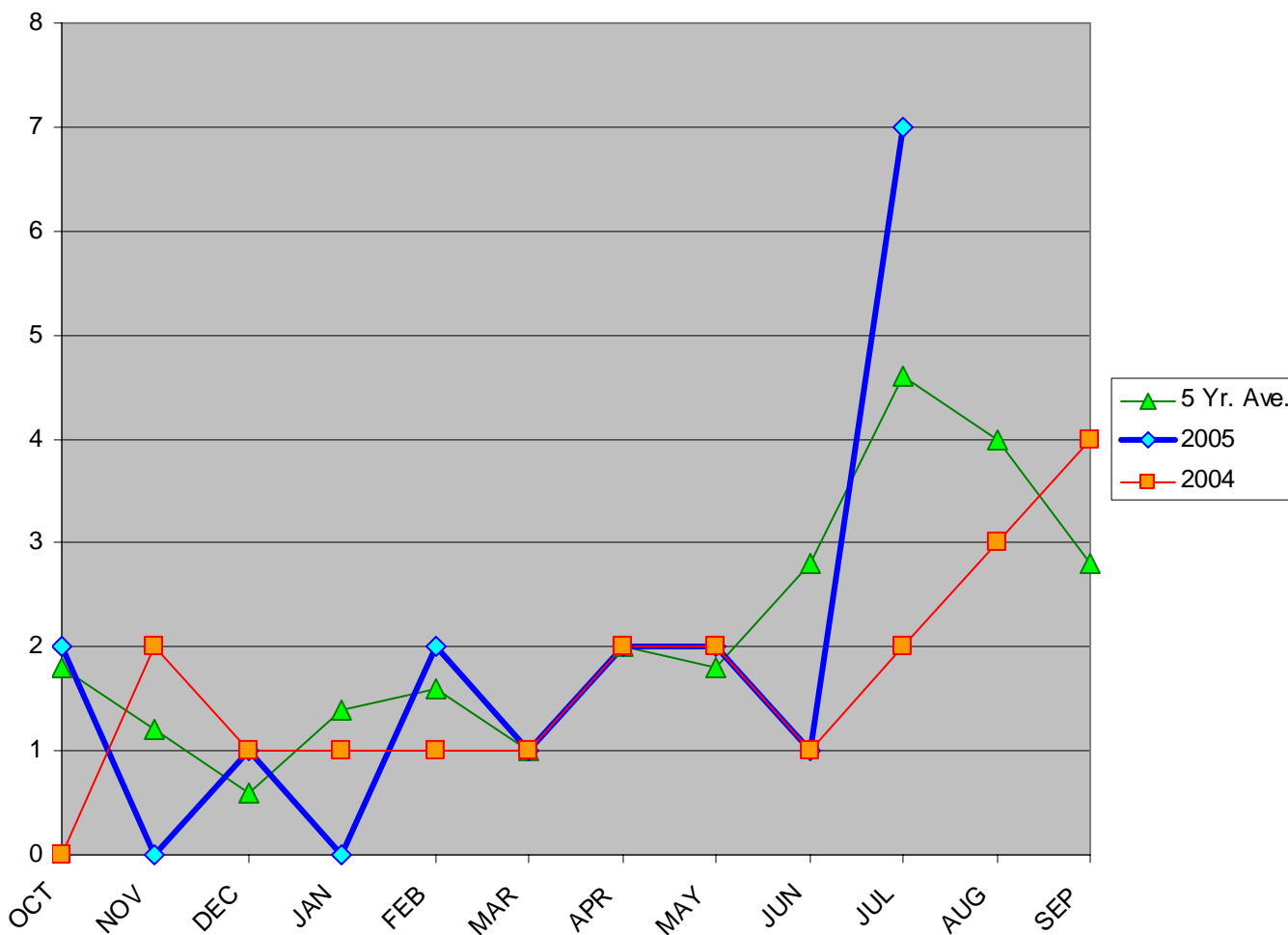
## General Aviation Fatalities in Alaska



AAL-240

System Safety Analysis Branch

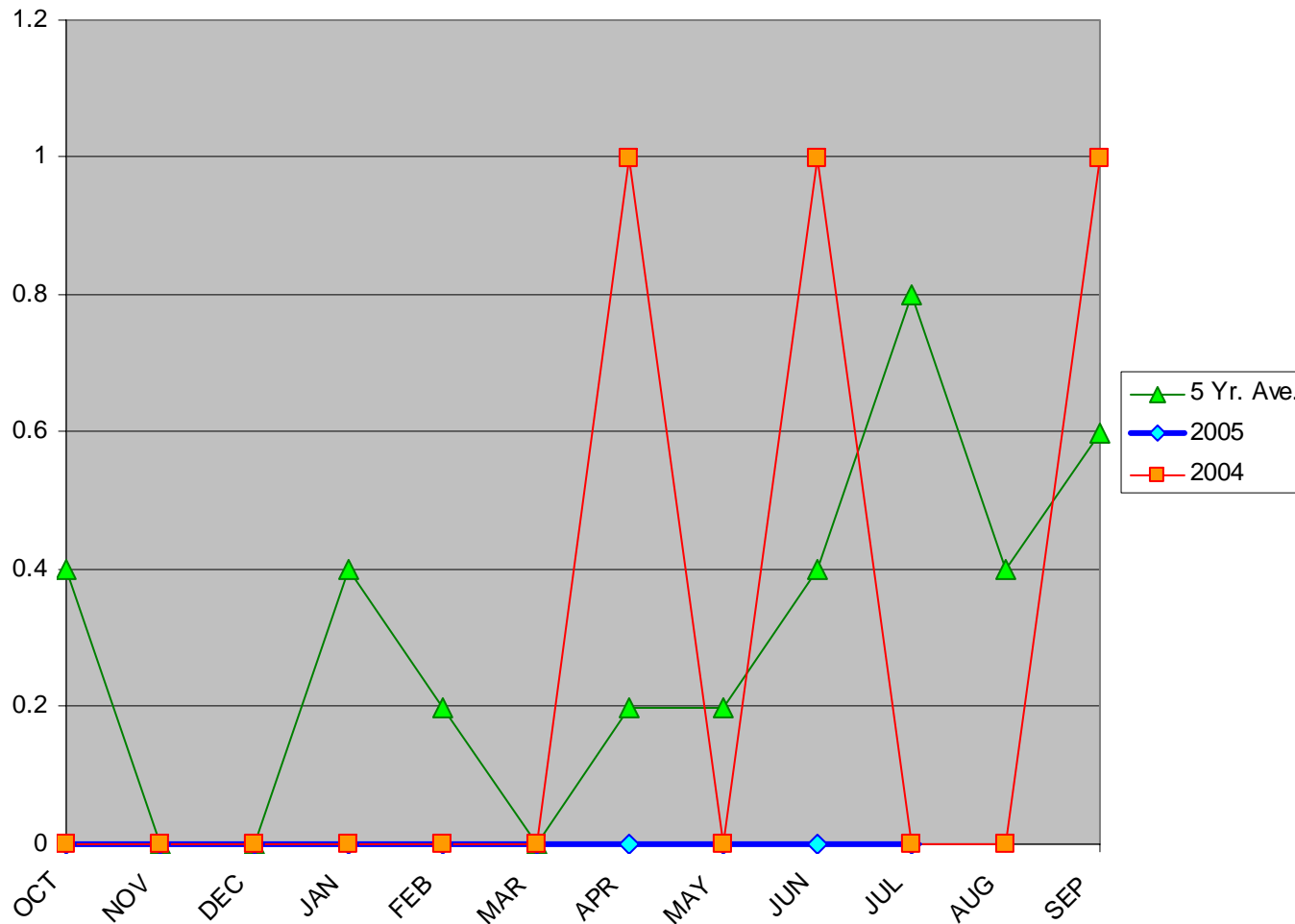
## Air Carrier (Part 135) Accidents in Alaska



AAL-240

System Safety Analysis Branch

## Air Carrier (FAR 135) Fatal Accidents in Alaska

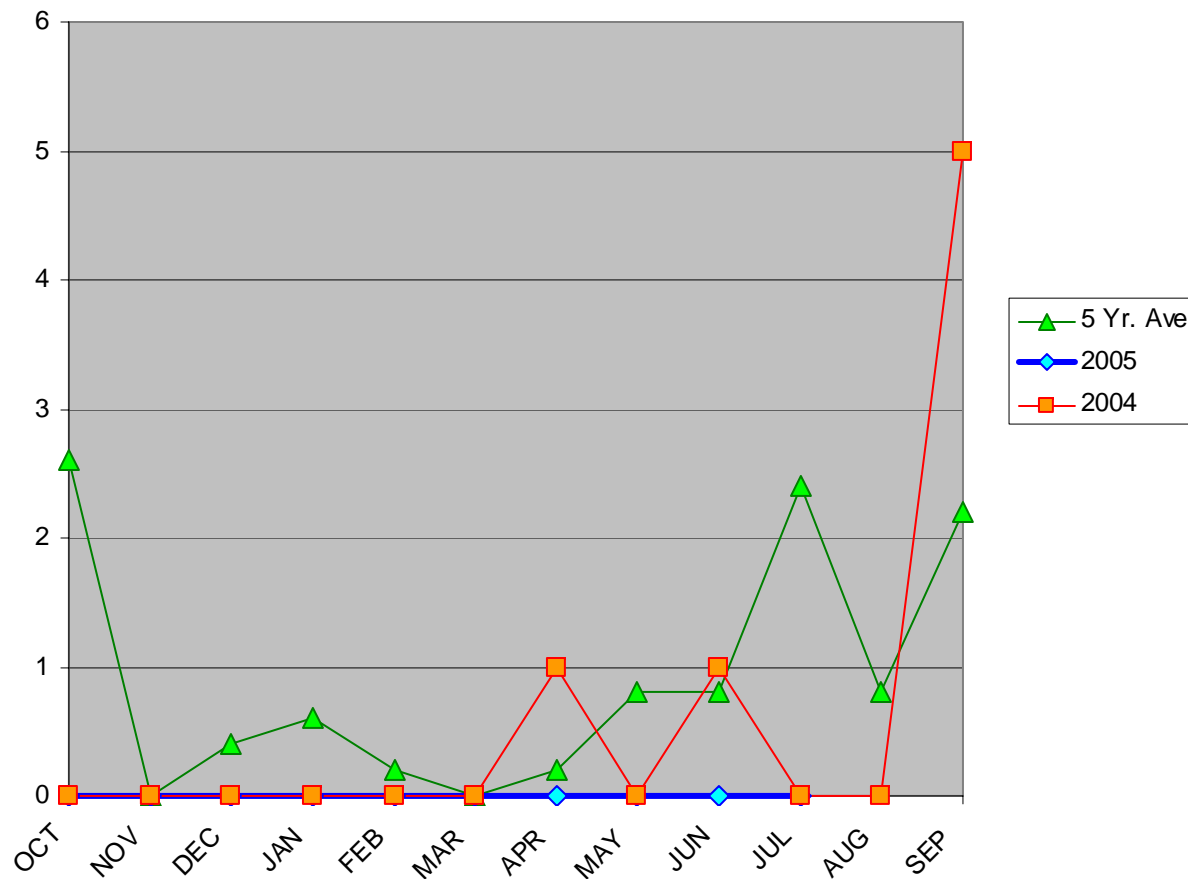


AAL-240

System Safety Analysis Branch



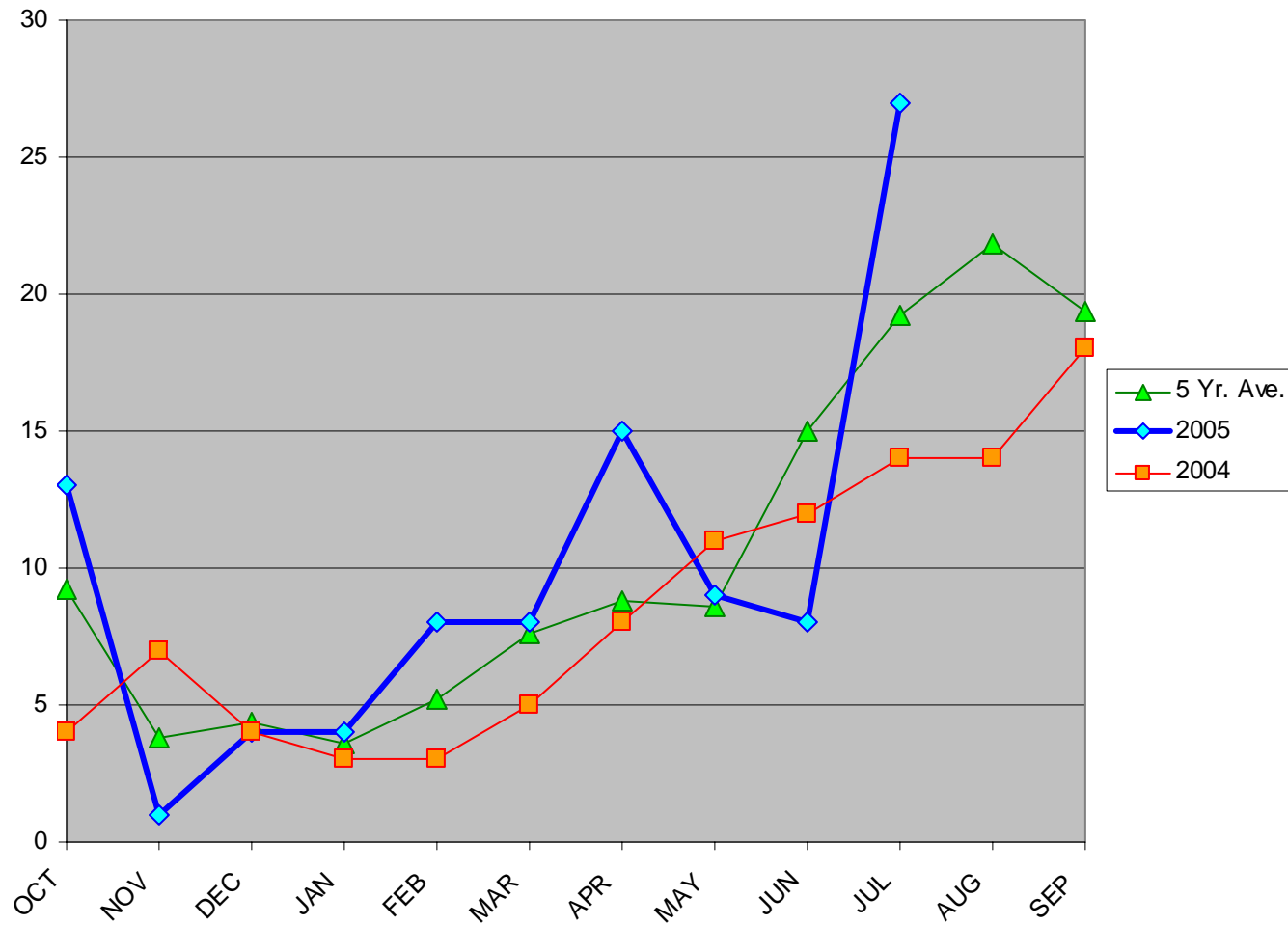
## Air Carrier (FAR 135) Fatalities in Alaska



AAL-240

System Safety Analysis Branch

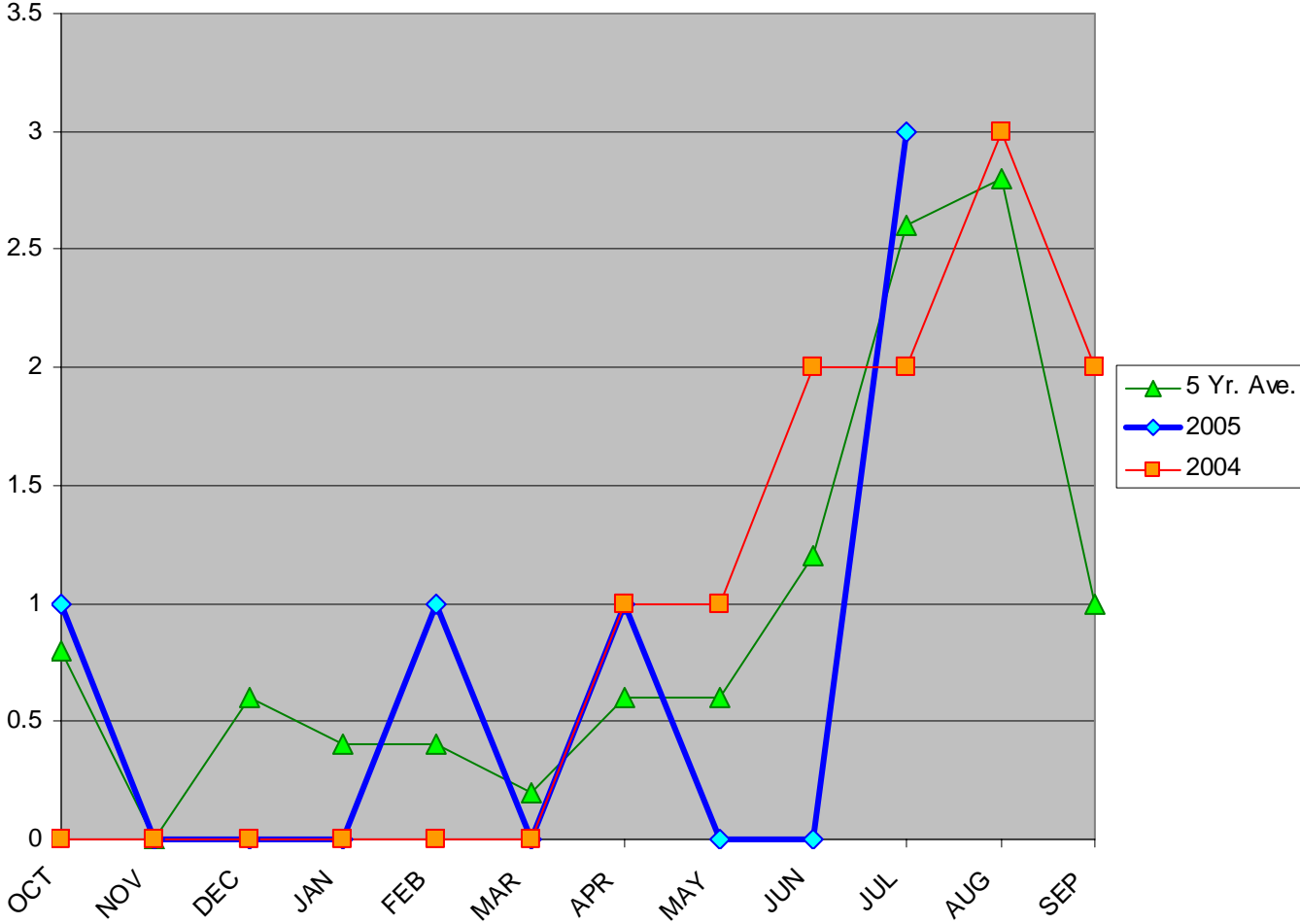
## Total Accidents in Alaska



AAL-240

System Safety Analysis Branch

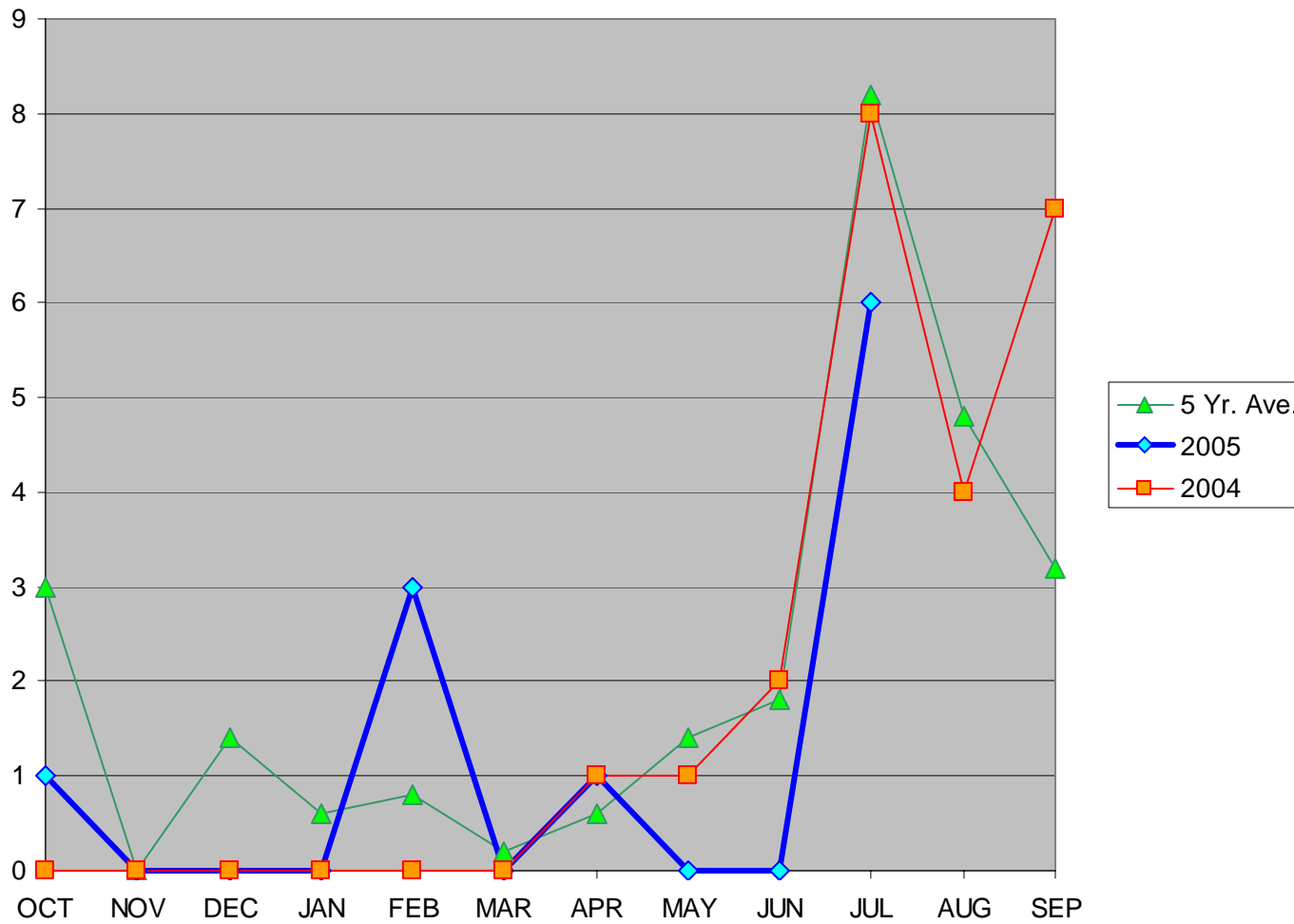
# Total Fatal Accidents in Alaska



AAL-240

System Safety Analysis Branch

## Total Fatalities in Alaska



**AAAL-240**

**System Safety Analysis Branch**