

The background of the slide is a dark blue gradient. It features a pattern of concentric circles and a grid of thin, light blue lines. The circles are centered around the text, creating a target-like or ripple effect. The grid lines are spaced evenly across the page.

# Alaska Accident Statistics

## January 2005

AAL-240

System Safety Analysis Branch

**FAA ALASKAN REGION  
MONTHLY AIRCRAFT ACCIDENT SUMMARY**

**January 2005**

Accident Comparison for the month of January

	2005	2004	January 5-YEAR		
			High	Low	Average
<b>General Aviation</b> (FAR Parts 91,133,137,125,129 & Public Use)	3	2	3	0	1.6
Fatal Accidents	0	0	0	0	0
Fatalities	0	0	0	0	0
<b>Air Carrier (FAR Part 135)</b>	0	1	4	0	1.4
Fatal Accidents	0	0	1	0	0.4
Fatalities	0	0	2	0	0.6
<b>Air Carrier (FAR Part 121)</b>	1	0	1	0	0.6
Fatal Accidents	0	0	0	0	0
Fatalities	0	0	0	0	0
<b>Total Accidents</b>	4	3	7	2	3.6
Fatal	0	0	1	0	0.4
Fatalities	0	0	2	0	0.6

This document is for comparison only. Totals frequently change due to reclassification.

## SUMMARY

### January 2005

---

For the month of January, there were three General Aviation (GA) accidents, compared with two in January 2004. The 5-year average for GA accidents during the month of January is 1.6 events. There were no fatal GA accidents in January 2005 or 2004.

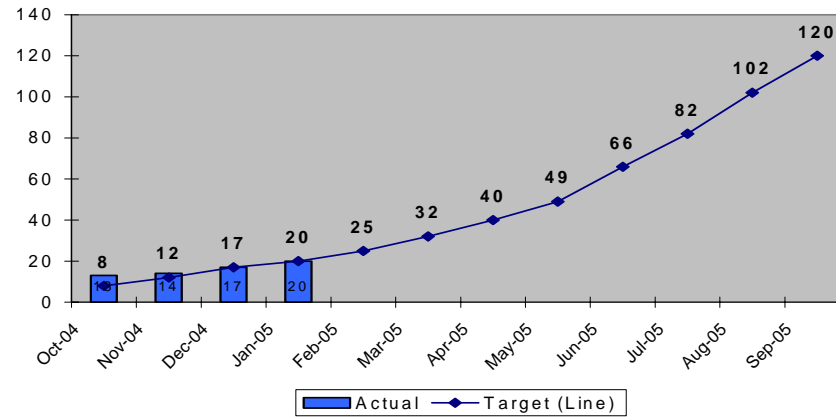
For the month of January, there were no FAR Part 135 Air Carrier accidents, compared with one in January of 2004. The 5-year average for FAR Part 135 Air Carrier accidents during the month of January is 1.4 events. There were no fatal FAR Part 135 Air Carrier accidents for the month of January in 2004 or 2005.

There was one FAR Part 121 event for the month of January in 2005, compared with none in 2004. The 5-year average for FAR Part 121 accidents during the month of January is 0.6. There were no fatal FAR Part 121 Air Carrier accidents for the month of January in 2004 or 2005.

There were a total of four aircraft accidents during January 2005. This is compared with three in January 2004. The 5-year average for accidents during the month of January is 3.6 events. There were no fatal accidents for the month of January 2004 or 2005.

**Note: Statistics contained in this report may differ from past reports produced by the System Safety Analysis Branch. This is caused by frequent reclassifications of events by the National Transportation Safety Board. The format of this report has been modified to display statistics by fiscal year instead of calendar year.**

**Status of FAA Performance Targets  
Alaska GA & 135 Accidents  
Fiscal Year to Date  
Cumulative Total**



**Description**

Reduce accidents in Alaska for General Aviation and all Part 135 operations by 20% by Fiscal Year (FY) 2008 (from the 2000-2002 average of 130 accidents per year to no more than 104 accidents per year). (FY 2004 target is no more than 125 accidents)

This chart indicates the monthly total of Alaskan accidents. The graph shows the cumulative number of Alaskan accidents versus the target.

	Actual	Target (Line)	Index Range
Oct-04	13	8	Red
Nov-04	14	12	Yellow
Dec-04	17	17	Green
Jan-05	20	20	Green
Feb-05		25	
Mar-05		32	
Apr-05		40	
May-05		49	
Jun-05		66	
Jul-05		82	
Aug-05		102	
Sep-05		120	

## GENERAL AVIATION TOTAL

FY	OCT	NOV	DEC	JAN	FEB	MAR	APR	MAY	JUN	JUL	AUG	SEP	TOTAL
95	4	2	7	4	0	8	8	9	26	23	28	17	136
96	11	4	4	2	0	11	18	12	11	13	19	26	131
97	5	1	1	6	5	15	15	11	13	10	16	18	116
98	4	0	2	2	3	8	6	14	21	22	16	23	121
99	4	2	2	2	2	8	9	10	15	17	23	21	115
2000	2	3	2	0	4	3	11	9	17	11	14	18	94
<b>2001</b>	<b>9</b>	<b>3</b>	<b>6</b>	<b>2</b>	<b>4</b>	<b>7</b>	<b>7</b>	<b>5</b>	<b>14</b>	<b>12</b>	<b>26</b>	<b>17</b>	<b>112</b>
<b>2002</b>	<b>3</b>	<b>0</b>	<b>0</b>	<b>1</b>	<b>2</b>	<b>5</b>	<b>2</b>	<b>8</b>	<b>19</b>	<b>12</b>	<b>20</b>	<b>13</b>	<b>85</b>
<b>2003</b>	<b>8</b>	<b>3</b>	<b>6</b>	<b>0</b>	<b>3</b>	<b>7</b>	<b>5</b>	<b>5</b>	<b>10</b>	<b>15</b>	<b>17</b>	<b>20</b>	<b>99</b>
<b>2004</b>	<b>4</b>	<b>5</b>	<b>3</b>	<b>2</b>	<b>2</b>	<b>4</b>	<b>6</b>	<b>8</b>	<b>10</b>	<b>11</b>	<b>11</b>	<b>14</b>	<b>80</b>
<b>2005</b>	<b>11</b>	<b>1</b>	<b>3</b>	<b>3</b>									<b>18</b>
5 Yr. Ave.	7	2.4	3.6	1.6	3	5.2	6.2	7	14	12.2	17.6	16.4	94
MAX	11	5	6	3	4	7	11	9	19	15	26	20	112
MIN	3	0	0	0	2	3	2	5	10	11	11	13	80

## GENERAL AVIATION FATAL ACCIDENTS

FY	OCT	NOV	DEC	JAN	FEB	MAR	APR	MAY	JUN	JUL	AUG	SEP	TOTAL
95	0	0	0	0	0	0	1	2	3	4	4	2	16
96	0	0	0	0	0	0	1	1	1	2	3	4	12
97	1	0	0	0	2	3	3	0	1	0	1	2	13
98	1	0	0	0	0	0	1	2	1	3	1	1	10
99	0	0	0	0	0	0	0	2	1	0	5	0	8
2000	0	0	0	0	0	0	0	1	2	2	2	0	7
<b>2001</b>	<b>1</b>	<b>0</b>	<b>2</b>	<b>0</b>	<b>0</b>	<b>0</b>	<b>0</b>	<b>0</b>	<b>0</b>	<b>1</b>	<b>2</b>	<b>0</b>	<b>6</b>
<b>2002</b>	<b>0</b>	<b>0</b>	<b>0</b>	<b>0</b>	<b>0</b>	<b>1</b>	<b>1</b>	<b>1</b>	<b>2</b>	<b>1</b>	<b>3</b>	<b>0</b>	<b>9</b>
<b>2003</b>	<b>0</b>	<b>0</b>	<b>1</b>	<b>0</b>	<b>0</b>	<b>0</b>	<b>0</b>	<b>0</b>	<b>1</b>	<b>2</b>	<b>2</b>	<b>1</b>	<b>7</b>
<b>2004</b>	<b>0</b>	<b>0</b>	<b>0</b>	<b>0</b>	<b>0</b>	<b>0</b>	<b>0</b>	<b>1</b>	<b>1</b>	<b>2</b>	<b>3</b>	<b>1</b>	<b>8</b>
<b>2005</b>	<b>1</b>	<b>0</b>	<b>0</b>	<b>0</b>									<b>1</b>
5 Yr. Ave	0.4	0	0.6	0	0	0.2	0.2	0.6	1.2	1.6	2.4	0.4	7.4
MAX	1	0	2	0	0	1	1	1	2	2	3	1	9
MIN	0	0	0	0	0	0	0	0	0	1	2	0	6

## GENERAL AVIATION FATALITIES

FY	OCT	NOV	DEC	JAN	FEB	MAR	APR	MAY	JUN	JUL	AUG	SEP	TOTAL
95	0	0	0	0	0	0	2	3	14	9	6	3	37
96	0	0	0	0	0	0	1	2	1	3	4	8	19
97	1	0	0	0	4	6	6	0	4	0	3	3	27
98	1	0	0	0	0	0	1	4	1	5	1	1	14
99	0	0	0	0	0	0	0	3	1	0	11	0	15
2000	0	0	0	0	0	0	0	1	2	2	4	0	9
2001	1	0	4	0	0	0	0	0	0	4	2	0	11
2002	0	0	0	0	0	1	1	2	2	2	5	0	13
2003	0	0	1	0	0	0	0	0	2	9	5	3	20
2004	0	0	0	0	0	0	0	1	1	8	4	2	16
2005	1	0	0	0									1
<b>5 Yr.</b>													
<b>Ave</b>	0.4	0	1	0	0	0.2	0.2	0.8	1.4	5	4	1	13.8
<b>MAX</b>	1	0	4	0	0	1	1	2	2	9	5	3	20
<b>MIN</b>	0	0	0	0	0	0	0	0	0	2	2	0	9

AAL-240

System Safety Analysis Branch

## AIR CARRIER TOTAL (FAR 135)

FY	OCT	NOV	DEC	JAN	FEB	MAR	APR	MAY	JUN	JUL	AUG	SEP	TOTAL
95	1	3	4	2	2	4	0	4	3	4	3	2	32
96	0	2	3	0	0	3	2	3	2	4	7	7	33
97	1	2	3	2	2	2	6	1	2	7	5	7	40
98	2	2	1	1	4	0	3	6	5	2	3	8	37
99	4	0	3	3	1	2	7	0	5	1	3	5	34
2000	6	1	4	1	4	4	1	2	2	1	3	4	33
<b>2001</b>	<b>2</b>	<b>3</b>	<b>1</b>	<b>4</b>	<b>0</b>	<b>0</b>	<b>3</b>	<b>2</b>	<b>1</b>	<b>6</b>	<b>3</b>	<b>1</b>	<b>26</b>
<b>2002</b>	<b>3</b>	<b>0</b>	<b>0</b>	<b>1</b>	<b>4</b>	<b>3</b>	<b>1</b>	<b>1</b>	<b>8</b>	<b>4</b>	<b>8</b>	<b>3</b>	<b>36</b>
<b>2003</b>	<b>2</b>	<b>1</b>	<b>0</b>	<b>1</b>	<b>1</b>	<b>0</b>	<b>2</b>	<b>2</b>	<b>3</b>	<b>4</b>	<b>3</b>	<b>2</b>	<b>21</b>
<b>2004</b>	<b>0</b>	<b>2</b>	<b>1</b>	<b>1</b>	<b>1</b>	<b>1</b>	<b>2</b>	<b>2</b>	<b>1</b>	<b>2</b>	<b>3</b>	<b>4</b>	<b>20</b>
<b>2005</b>	<b>2</b>	<b>0</b>	<b>0</b>	<b>0</b>									<b>2</b>
5 Yr. Ave.	1.8	1.2	0.4	1.4	2	1.6	1.8	1.8	3	3.4	4	2.8	27.2
MAX	3	3	1	4	4	4	3	2	8	6	8	4	36
MIN	0	0	0	0	0	0	1	1	1	1	3	1	20



## AIR CARRIER FATAL ACCIDENTS (FAR 135)

FY	OCT	NOV	DEC	JAN	FEB	MAR	APR	MAY	JUN	JUL	AUG	SEP	TOTAL
95	0	1	2	0	1	0	0	0	1	1	1	0	7
96	0	0	0	0	0	0	0	0	0	1	1	1	3
97	1	2	1	1	0	0	1	0	1	2	1	1	11
98	1	1	0	0	1	0	0	1	0	0	1	2	7
99	0	0	0	0	0	0	1	0	2	0	0	1	4
<b>2000</b>	0	0	1	0	1	0	0	0	1	0	0	2	5
<b>2001</b>	0	0	0	1	0	0	0	0	0	2	0	0	3
<b>2002</b>	2	0	0	1	1	0	0	0	0	1	1	0	6
<b>2003</b>	0	0	0	0	0	0	0	1	1	1	1	0	4
<b>2004</b>	0	0	0	0	0	0	1	0	1	0	0	1	3
<b>2005</b>	0	0	0	0	0	0	0	0	0	0	0	0	0
5 Yr. Ave.	0.4	0	0	0.4	0.4	0	0.2	0.2	0.6	0.8	0.4	0.6	4.2
MAX	2	0	0	1	1	0	1	1	1	2	1	2	6
MIN	0	0	0	0	0	0	0	0	0	0	0	0	3

## AIR CARRIER FATALITIES (FAR 135)

FY	OCT	NOV	DEC	JAN	FEB	MAR	APR	MAY	JUN	JUL	AUG	SEP	TOTAL
95	0	1	6	0	1	0	0	0	4	6	2	0	20
96	0	0	0	0	0	0	0	0	0	1	2	3	6
97	3	3	1	1	0	0	5	0	2	8	1	1	25
98	2	8	0	0	1	0	0	2	0	0	1	6	20
99	0	0	0	0	0	0	1	0	8	0	0	1	10
<b>2000</b>	0	0	6	0	6	0	0	0	4	0	0	6	22
<b>2001</b>	0	0	2	2	0	0	0	0	0	7	0	0	11
<b>2002</b>	13	0	0	1	1	0	0	0	0	4	2	0	21
<b>2003</b>	0	0	0	0	0	0	0	4	3	1	2	0	10
<b>2004</b>	0	0	0	0	0	0	1	0	1	0	0	5	7
<b>2005</b>	0	0	0	0									0
5 Yr. Ave.	2.6	0	0.4	0.6	1.4	0	0.2	0.8	1.6	2.4	0.8	2.2	14.2
MAX	13	0	2	2	6	0	1	4	4	7	2	6	22
MIN	0	0	0	0	0	0	0	0	0	0	0	0	7

## SUBTOTAL AK GOAL ACCIDENTS (GA & FAR 135)

FY	OCT	NOV	DEC	JAN	FEB	MAR	APR	MAY	JUN	JUL	AUG	SEP	TOTAL
95	5	5	11	6	2	12	8	13	29	27	31	19	168
96	11	6	7	2	0	14	20	15	13	17	26	33	164
97	6	3	4	8	7	17	21	12	15	17	21	25	156
98	6	2	3	3	7	8	9	20	26	24	19	31	158
99	8	2	5	5	3	10	16	10	20	18	26	26	149
<b>2000</b>	<b>8</b>	<b>4</b>	<b>6</b>	<b>1</b>	<b>8</b>	<b>7</b>	<b>12</b>	<b>11</b>	<b>19</b>	<b>12</b>	<b>17</b>	<b>22</b>	<b>127</b>
<b>2001</b>	<b>11</b>	<b>6</b>	<b>7</b>	<b>6</b>	<b>4</b>	<b>7</b>	<b>10</b>	<b>7</b>	<b>15</b>	<b>18</b>	<b>29</b>	<b>18</b>	<b>138</b>
<b>2002</b>	<b>6</b>	<b>0</b>	<b>0</b>	<b>2</b>	<b>6</b>	<b>8</b>	<b>3</b>	<b>9</b>	<b>27</b>	<b>16</b>	<b>28</b>	<b>16</b>	<b>121</b>
<b>2003</b>	<b>10</b>	<b>4</b>	<b>6</b>	<b>1</b>	<b>4</b>	<b>7</b>	<b>7</b>	<b>7</b>	<b>13</b>	<b>19</b>	<b>20</b>	<b>22</b>	<b>120</b>
<b>2004</b>	<b>4</b>	<b>7</b>	<b>4</b>	<b>3</b>	<b>3</b>	<b>5</b>	<b>8</b>	<b>10</b>	<b>11</b>	<b>13</b>	<b>14</b>	<b>18</b>	<b>100</b>
<b>2005</b>	<b>13</b>	<b>1</b>	<b>3</b>	<b>3</b>									<b>20</b>
5 Yr. Ave.	<b>8.8</b>	<b>3.6</b>	<b>4</b>	<b>3</b>	<b>5</b>	<b>6.8</b>	<b>8</b>	<b>8.8</b>	<b>17</b>	<b>15.6</b>	<b>21.6</b>	<b>19.2</b>	<b>121.2</b>
MAX	<b>13</b>	<b>7</b>	<b>7</b>	<b>6</b>	<b>8</b>	<b>8</b>	<b>12</b>	<b>11</b>	<b>27</b>	<b>19</b>	<b>29</b>	<b>22</b>	<b>138</b>
MIN	<b>4</b>	<b>0</b>	<b>0</b>	<b>1</b>	<b>3</b>	<b>5</b>	<b>3</b>	<b>7</b>	<b>11</b>	<b>12</b>	<b>14</b>	<b>16</b>	<b>100</b>

**AAI-240**

**System Safety Analysis Branch**

## SUBTOTAL AK GOAL FATAL ACCIDENTS (GA & FAR 135)

FY	OCT	NOV	DEC	JAN	FEB	MAR	APR	MAY	JUN	JUL	AUG	SEP	TOTAL
95	0	1	2	0	1	0	1	2	4	5	5	2	23
96	0	0	0	0	0	0	1	1	1	3	4	5	15
97	2	2	1	1	2	3	4	0	2	2	2	3	24
98	2	1	0	0	1	0	1	3	1	3	2	3	17
99	0	0	0	0	0	0	1	2	3	0	5	1	12
<b>2000</b>	0	0	1	0	1	0	0	1	3	2	2	2	12
<b>2001</b>	1	0	2	1	0	0	0	0	0	3	2	0	9
<b>2002</b>	2	0	0	1	1	1	1	1	2	2	4	0	15
<b>2003</b>	0	0	1	0	0	0	0	1	2	3	3	1	11
<b>2004</b>	0	0	0	0	0	0	1	1	2	2	3	2	11
<b>2005</b>	1	0	0	0									1
5 Yr. Ave.	0.8	0	0.6	0.4	0.4	0.2	0.4	0.8	1.8	2.4	2.8	1	11.6
MAX	2	0	2	1	1	1	1	1	3	3	4	2	15
MIN	0	0	0	0	0	0	0	0	0	2	2	0	9

## SUBTOTAL AK Goal FATALITIES (GA & FAR 135)

FY	OCT	NOV	DEC	JAN	FEB	MAR	APR	MAY	JUN	JUL	AUG	SEP	TOTAL
95	0	1	6	0	1	0	2	3	18	15	8	3	57
96	0	0	0	0	0	0	1	2	1	4	6	11	25
97	4	3	1	1	4	6	11	0	6	8	4	4	52
98	3	8	0	0	1	0	1	6	1	5	2	7	34
99	0	0	0	0	0	0	1	3	9	0	11	1	25
2000	0	0	6	0	6	0	0	1	6	2	4	6	31
2001	1	0	6	2	0	0	0	0	0	11	2	0	22
2002	13	0	0	1	1	1	1	2	2	6	7	0	34
2003	0	0	1	0	0	0	0	4	5	10	7	3	30
2004	0	0	0	0	0	0	1	1	2	8	4	7	23
2005	1	0	0	0									1
5 Yr. Ave.	3	0	1.4	0.6	1.4	0.2	0.4	1.6	3	7.4	4.8	3.2	28
MAX	13	0	6	2	6	1	1	4	6	11	7	7	34
MIN	0	0	0	0	0	0	0	0	0	2	2	0	22

## AIR CARRIER TOTAL (FAR 121)

FY	OCT	NOV	DEC	JAN	FEB	MAR	APR	MAY	JUN	JUL	AUG	SEP	TOTAL
95	0	1	1	0	0	0	0	0	1	1	0	0	4
96	0	0	0	0	2	0	0	1	0	2	0	0	5
97	0	0	1	0	0	0	1	0	0	0	1	0	3
98	1	0	0	1	0	0	0	0	1	0	1	0	4
99	0	2	0	0	0	0	0	2	0	1	2	0	7
<b>2000</b>	0	0	0	0	0	0	0	0	0	0	0	0	0
<b>2001</b>	2	1	0	1	0	0	0	0	0	1	1	1	7
<b>2002</b>	0	0	1	0	1	2	0	0	0	1	0	0	5
<b>2003</b>	0	0	0	1	0	1	1	0	0	0	0	0	3
<b>2004</b>	0	0	0	0	0	0	0	1	0	0	0	0	1
<b>2005</b>	0	0	0	1									1
5 Yr. Ave.	0.4	0.2	0.2	0.6	0.2	0.6	0.2	0.2	0	0.4	0.2	0.2	3.2
MAX	2	1	1	1	1	2	1	1	0	1	1	1	7
MIN	0	0	0	0	0	0	0	0	0	0	0	0	0

**AAI-240**

**System Safety Analysis Branch**

## AIR CARRIER FATAL ACCIDENTS (FAR 121)

FY	OCT	NOV	DEC	JAN	FEB	MAR	APR	MAY	JUN	JUL	AUG	SEP	TOTAL
95	0	0	0	0	0	0	0	0	0	0	0	0	0
96	0	0	0	0	0	0	0	0	0	2	0	0	2
97	0	0	0	0	0	0	0	0	0	0	0	0	0
98	0	0	0	0	0	0	0	0	0	0	0	0	0
99	0	0	0	0	0	0	0	1	0	0	0	0	1
<b>2000</b>	0	0	0	0	0	0	0	0	0	0	0	0	0
<b>2001</b>	0	0	0	0	0	0	0	0	0	0	0	0	0
<b>2002</b>	0	0	0	0	0	0	0	0	0	0	0	0	0
<b>2003</b>	0	0	0	0	0	0	0	0	0	0	0	0	0
<b>2004</b>	0	0	0	0	0	0	0	0	0	0	0	0	0
<b>2005</b>	0	0	0	0									0
5 Yr. Ave.	0	0	0	0	0	0	0	0	0	0	0	0	0
MAX	0	0	0	0	0	0	0	0	0	0	0	0	0
MIN	0	0	0	0	0	0	0	0	0	0	0	0	0

## AIR CARRIER FATALITIES (FAR 121)

FY	OCT	NOV	DEC	JAN	FEB	MAR	APR	MAY	JUN	JUL	AUG	SEP	TOTAL
95	0	0	0	0	0	0	0	0	0	0	0	0	0
96	0	0	0	0	0	0	0	0	0	5	0	0	5
97	0	0	0	0	0	0	0	0	0	0	0	0	0
98	0	0	0	0	0	0	0	0	0	0	0	0	0
99	0	0	0	0	0	0	0	1	0	0	0	0	1
<b>2000</b>	0	0	0	0	0	0	0	0	0	0	0	0	0
<b>2001</b>	0	0	0	0	0	0	0	0	0	0	0	0	0
<b>2002</b>	0	0	0	0	0	0	0	0	0	0	0	0	0
<b>2003</b>	0	0	0	0	0	0	0	0	0	0	0	0	0
<b>2004</b>	0	0	0	0	0	0	0	0	0	0	0	0	0
<b>2005</b>	0	0	0	0									0
5 Yr. Ave.	0	0	0	0	0	0	0	0	0	0	0	0	0
MAX	0	0	0	0	0	0	0	0	0	0	0	0	0
MIN	0	0	0	0	0	0	0	0	0	0	0	0	0



## TOTAL ACCIDENTS All Events

FY	OCT	NOV	DEC	JAN	FEB	MAR	APR	MAY	JUN	JUL	AUG	SEP	TOTAL
95	5	6	12	6	2	12	8	13	30	28	31	19	172
96	11	6	7	2	2	14	20	16	13	19	26	33	169
97	6	3	5	8	7	17	22	12	15	17	22	25	159
98	7	2	3	4	7	8	9	20	27	24	20	31	162
99	8	4	5	5	3	10	16	12	20	19	28	26	156
<b>2000</b>	<b>8</b>	<b>4</b>	<b>6</b>	<b>1</b>	<b>8</b>	<b>7</b>	<b>12</b>	<b>11</b>	<b>19</b>	<b>12</b>	<b>17</b>	<b>22</b>	<b>127</b>
<b>2001</b>	<b>13</b>	<b>7</b>	<b>7</b>	<b>7</b>	<b>4</b>	<b>7</b>	<b>10</b>	<b>7</b>	<b>15</b>	<b>19</b>	<b>30</b>	<b>19</b>	<b>145</b>
<b>2002</b>	<b>6</b>	<b>0</b>	<b>1</b>	<b>2</b>	<b>7</b>	<b>10</b>	<b>3</b>	<b>9</b>	<b>27</b>	<b>17</b>	<b>28</b>	<b>16</b>	<b>126</b>
<b>2003</b>	<b>10</b>	<b>4</b>	<b>6</b>	<b>2</b>	<b>4</b>	<b>8</b>	<b>8</b>	<b>7</b>	<b>13</b>	<b>19</b>	<b>20</b>	<b>22</b>	<b>123</b>
<b>2004</b>	<b>4</b>	<b>7</b>	<b>4</b>	<b>3</b>	<b>3</b>	<b>5</b>	<b>8</b>	<b>11</b>	<b>12</b>	<b>14</b>	<b>14</b>	<b>18</b>	<b>103</b>
<b>2005</b>	<b>13</b>	<b>1</b>	<b>3</b>	<b>4</b>									<b>21</b>
5 Yr. Ave.	<b>9.2</b>	<b>3.8</b>	<b>4.2</b>	<b>3.6</b>	<b>5.2</b>	<b>7.4</b>	<b>8.2</b>	<b>9</b>	<b>17.2</b>	<b>16.2</b>	<b>21.8</b>	<b>19.4</b>	<b>124.8</b>
MAX	<b>13</b>	<b>7</b>	<b>7</b>	<b>7</b>	<b>8</b>	<b>10</b>	<b>12</b>	<b>11</b>	<b>27</b>	<b>19</b>	<b>30</b>	<b>22</b>	<b>145</b>
MIN	<b>4</b>	<b>0</b>	<b>1</b>	<b>2</b>	<b>3</b>	<b>5</b>	<b>3</b>	<b>7</b>	<b>12</b>	<b>12</b>	<b>14</b>	<b>16</b>	<b>103</b>

**AAI-240**

**System Safety Analysis Branch**

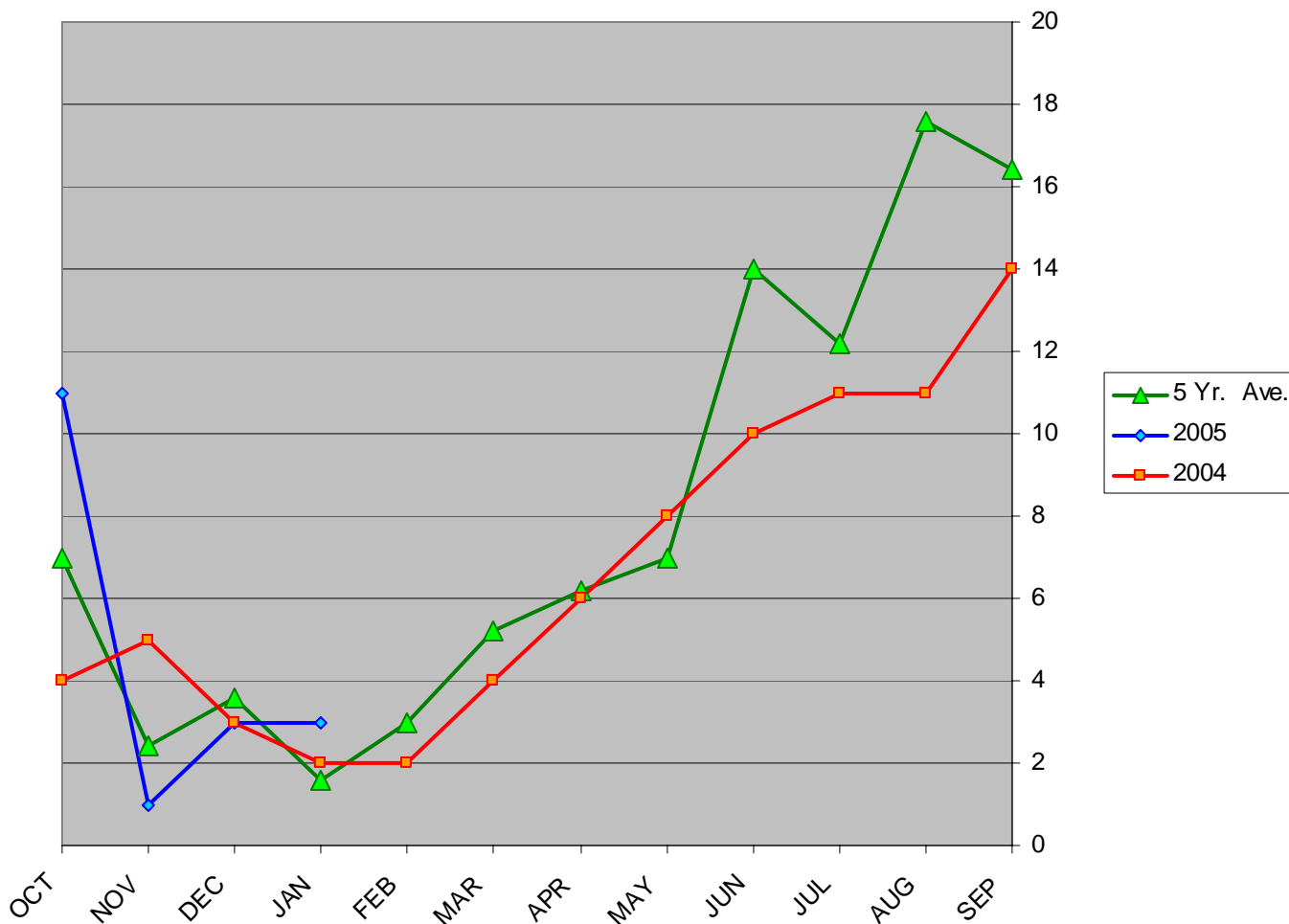
## TOTAL FATAL ACCIDENTS All Events

FY	OCT	NOV	DEC	JAN	FEB	MAR	APR	MAY	JUN	JUL	AUG	SEP	TOTAL
95	0	1	2	0	1	0	1	2	4	5	5	2	23
96	0	0	0	0	0	0	1	1	1	5	4	5	17
97	2	2	1	1	2	3	4	0	2	2	2	3	24
98	2	1	0	0	1	0	1	3	1	3	2	3	17
99	0	0	0	0	0	0	1	3	3	0	5	1	13
<b>2000</b>	0	0	1	0	1	0	0	1	3	2	2	2	12
<b>2001</b>	1	0	2	1	0	0	0	0	0	3	2	0	9
<b>2002</b>	2	0	0	1	1	1	1	1	2	2	4	0	15
<b>2003</b>	0	0	1	0	0	0	0	1	2	3	3	1	11
<b>2004</b>	0	0	0	0	0	0	1	1	2	2	3	2	11
<b>2005</b>	1	0	0	0									1
5 Yr. Ave.	0.8	0	0.6	0.4	0.4	0.2	0.4	0.8	1.8	2.4	2.8	1	11.6
MAX	2	0	2	1	1	1	1	1	3	3	4	2	15
MIN	0	0	0	0	0	0	0	0	0	2	2	0	9

## TOTAL FATALITIES (All Events)

FY	OCT	NOV	DEC	JAN	FEB	MAR	APR	MAY	JUN	JUL	AUG	SEP	TOTAL
95	0	1	6	0	1	0	2	3	18	15	8	3	57
96	0	0	0	0	0	0	1	2	1	9	6	11	30
97	4	3	1	1	4	6	11	0	6	8	4	4	52
98	3	8	0	0	1	0	1	6	1	5	2	7	34
99	0	0	0	0	0	0	1	4	9	0	11	1	26
<b>2000</b>	0	0	6	0	6	0	0	1	6	2	4	6	31
<b>2001</b>	1	0	6	2	0	0	0	0	0	11	2	0	22
<b>2002</b>	13	0	0	1	1	1	1	2	2	6	7	0	34
<b>2003</b>	0	0	1	0	0	0	0	4	5	10	7	3	30
<b>2004</b>	0	0	0	0	0	0	1	1	2	8	4	7	23
<b>2005</b>	1	0	0	0									1
5 Yr. Ave.	3	0	1.4	0.6	1.4	0.2	0.4	1.6	3	7.4	4.8	3.2	28
MAX	13	0	6	2	6	1	1	4	6	11	7	7	34
MIN	0	0	0	0	0	0	0	0	0	2	2	0	22

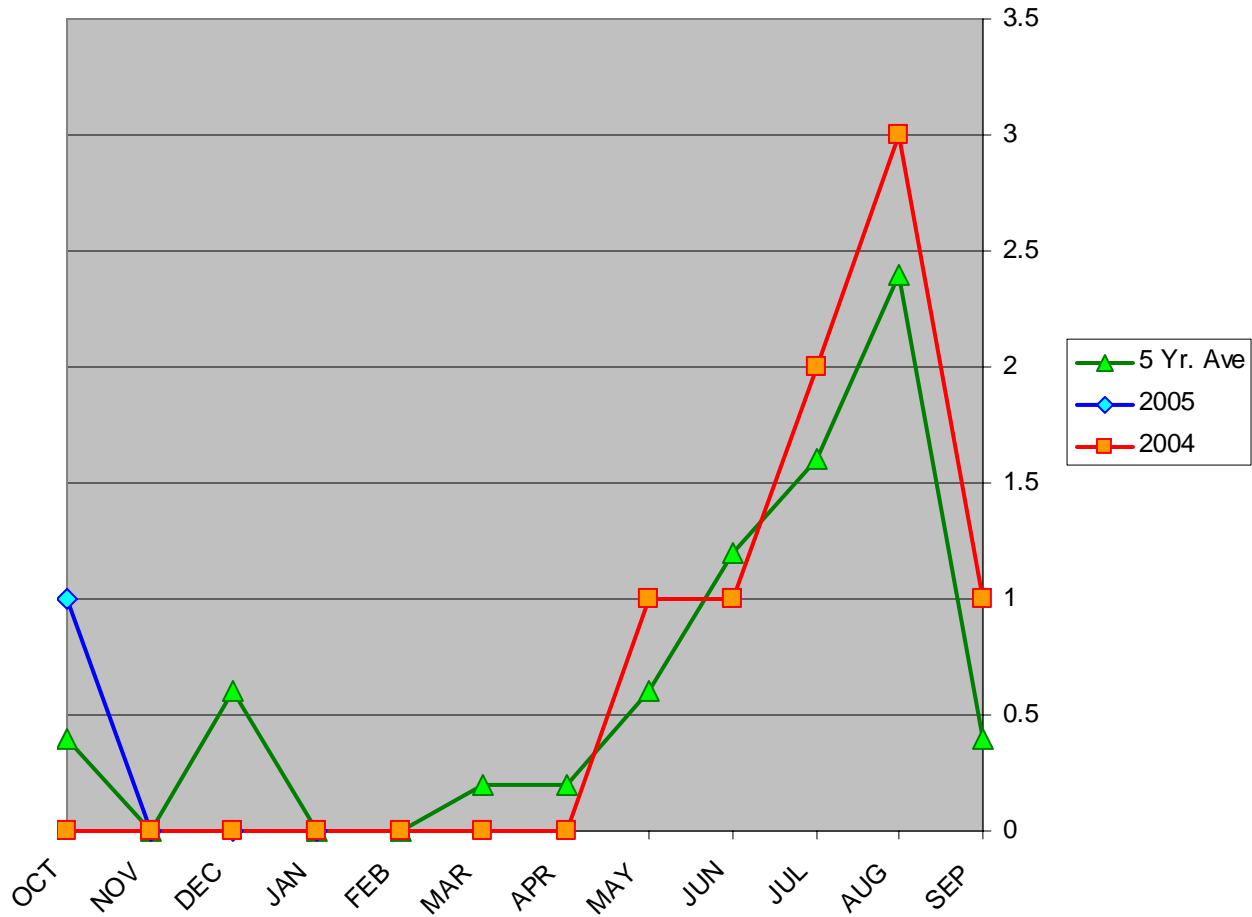
## General Aviation Accidents in Alaska



AAI-240

System Safety Analysis Branch

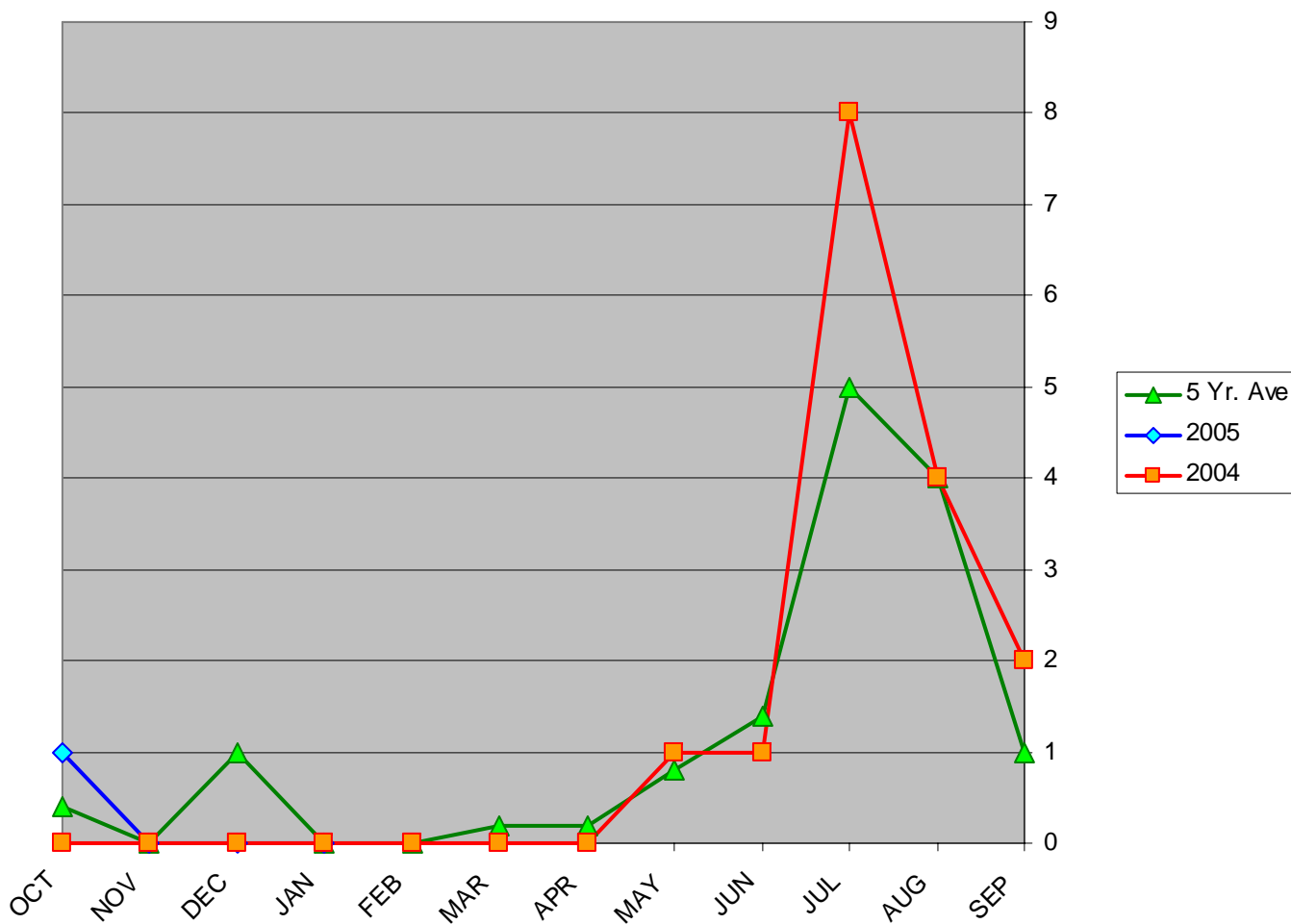
# General Aviation Fatal Accidents in Alaska



AAL-240

System Safety Analysis Branch

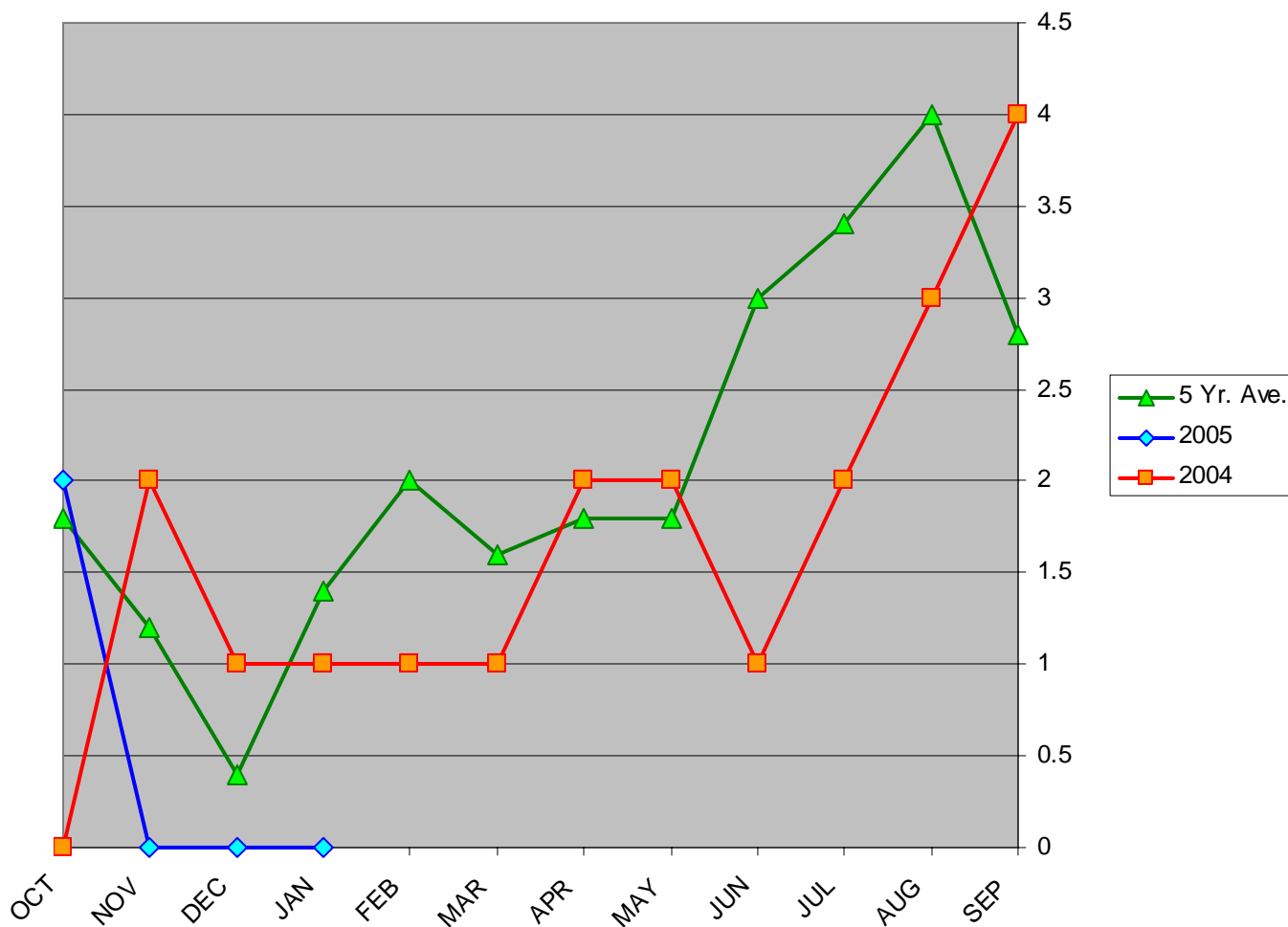
## General Aviation Fatalities in Alaska



AAL-240

System Safety Analysis Branch

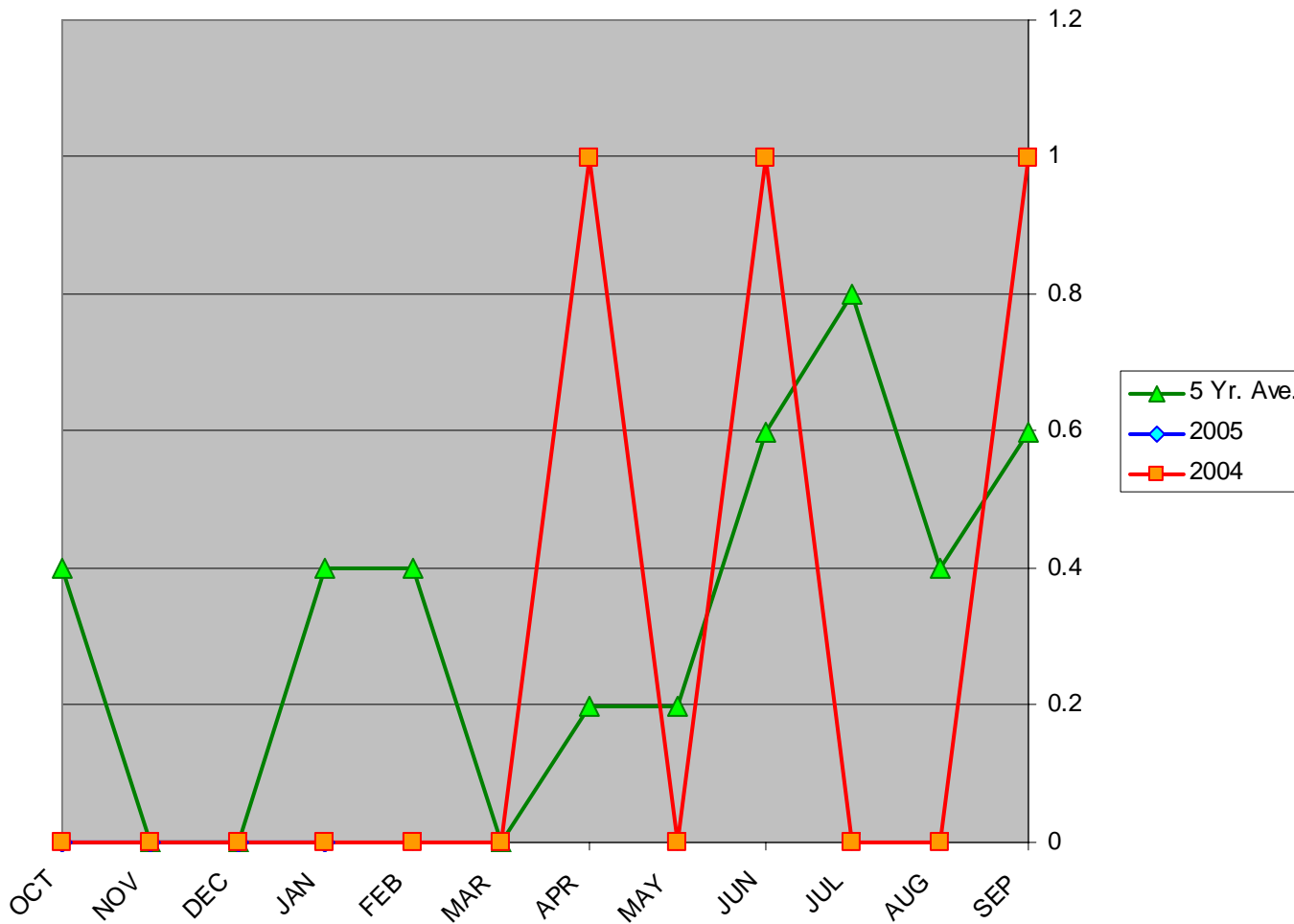
## Air Carrier (Part 135) Accidents in Alaska



AAL-240

System Safety Analysis Branch

## Air Carrier (FAR 135) Fatal Accidents in Alaska

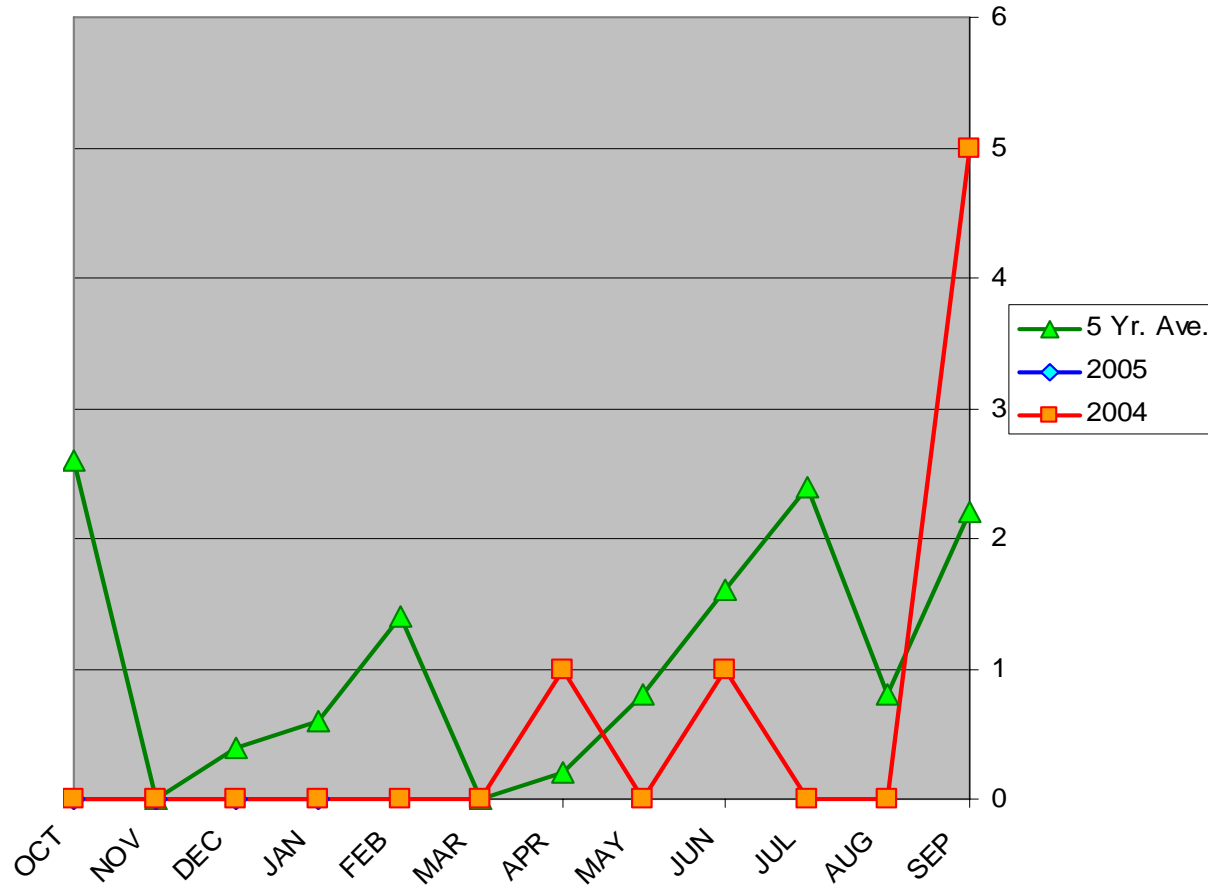


**AAI-240**

**System Safety Analysis Branch**



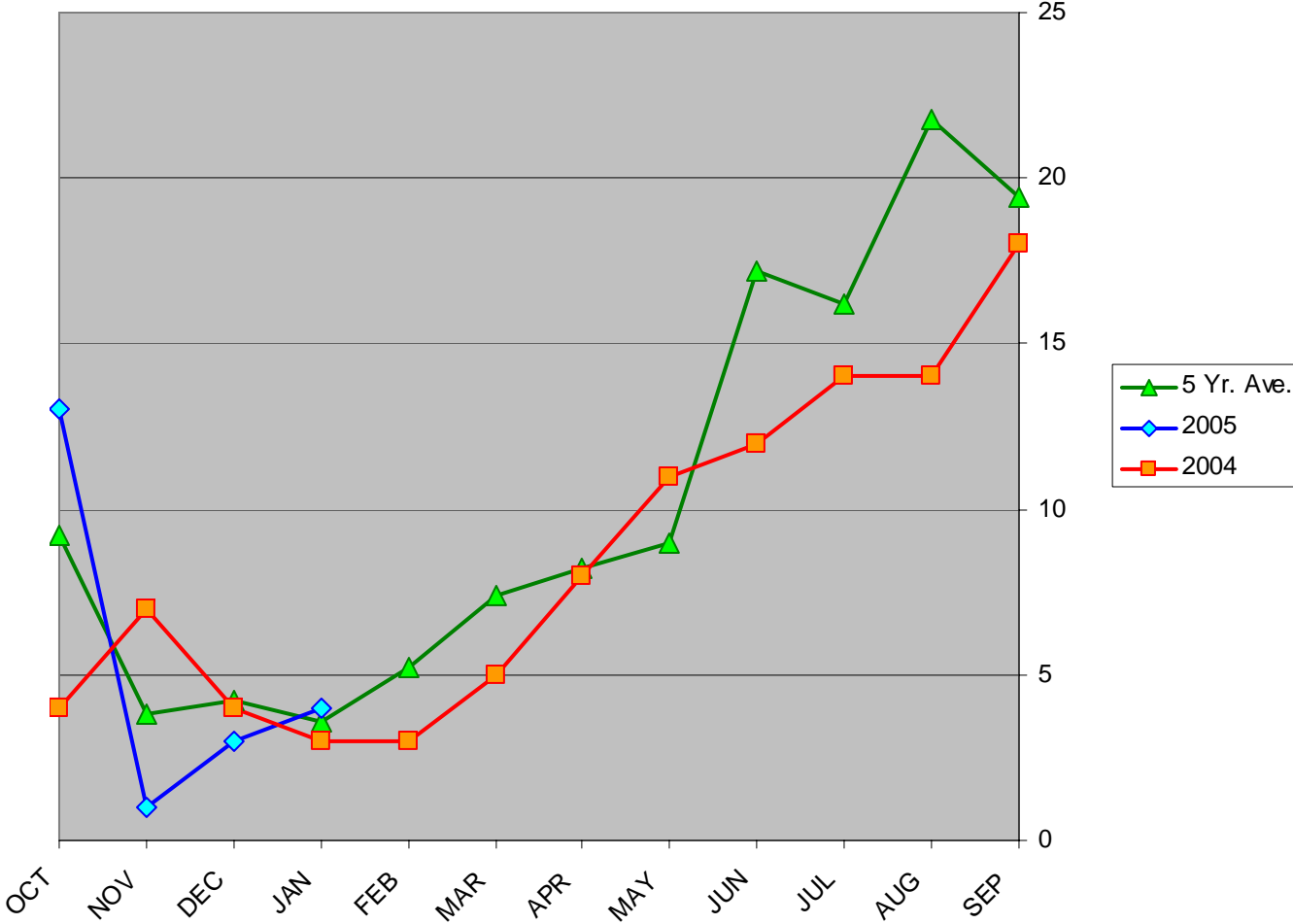
## Air Carrier (FAR 135) Fatalities in Alaska



AAL-240

System Safety Analysis Branch

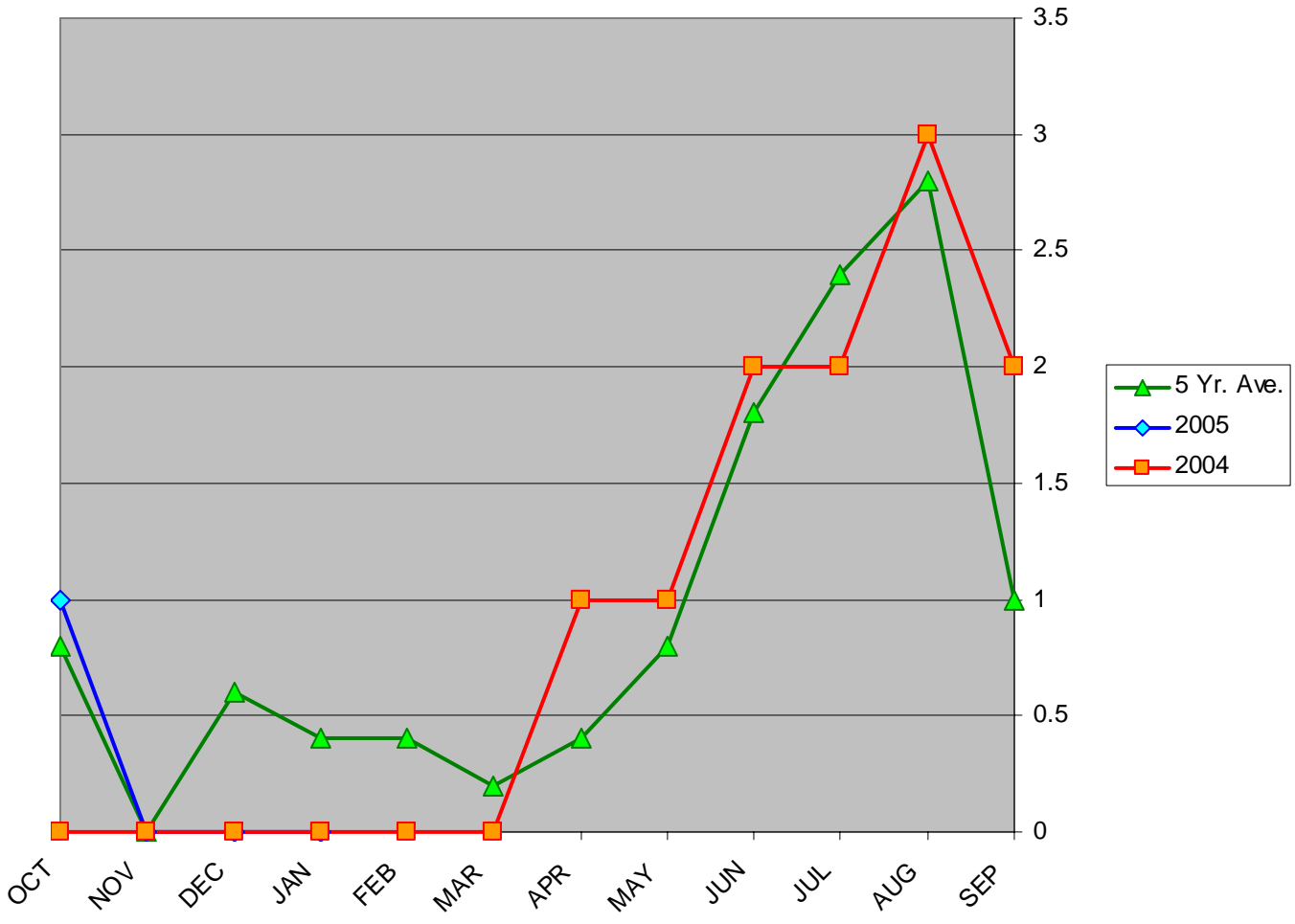
# Total Accidents in Alaska



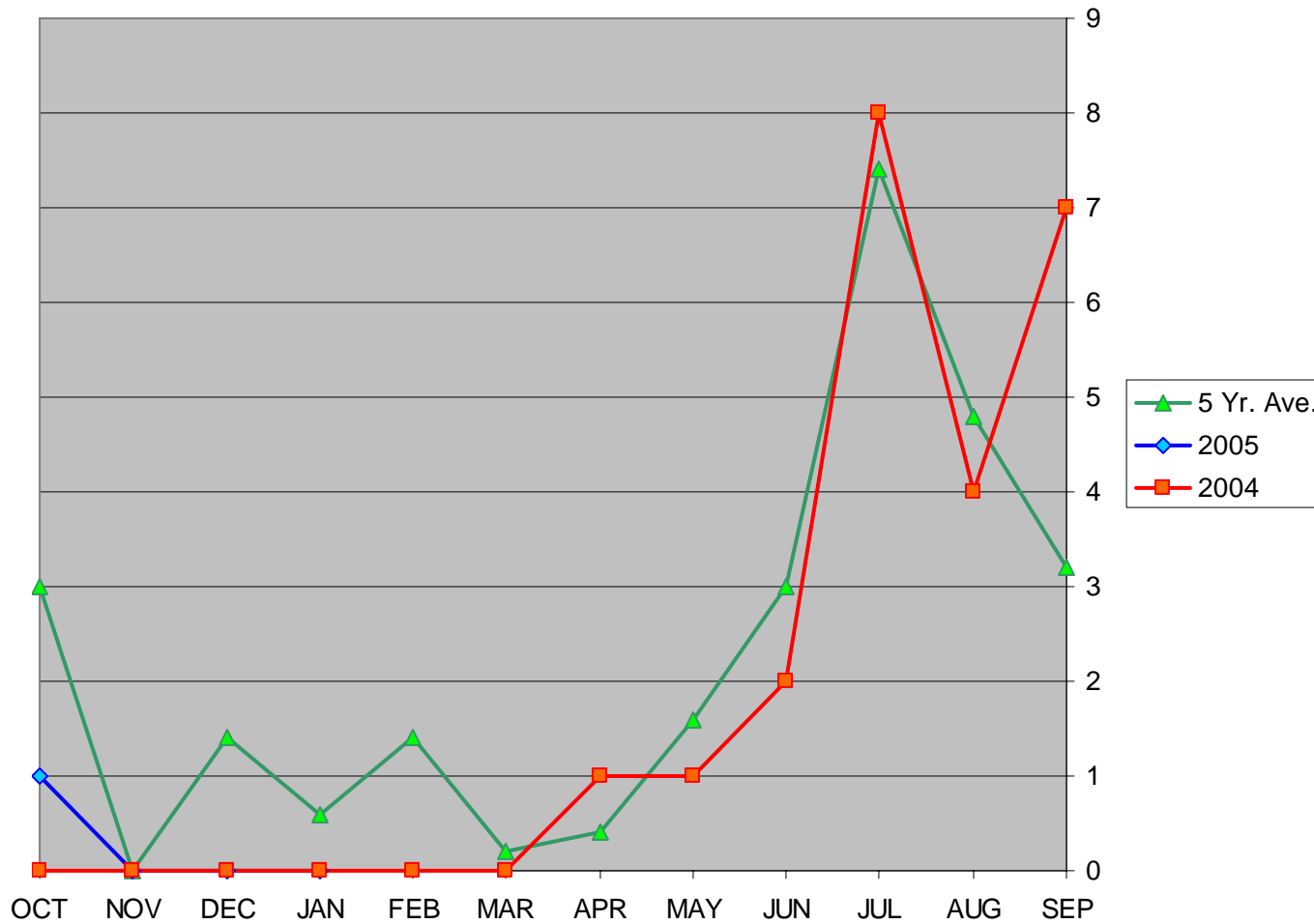
AAL-240

System Safety Analysis Branch

# Total Fatal Accidents in Alaska



## Total Fatalities in Alaska



**AAAL-240**

**System Safety Analysis Branch**