



# Alaska Accident Statistics

## June 2004

AAL-240

System Safety Analysis Branch

**FAA ALASKAN REGION**  
**MONTHLY AIRCRAFT ACCIDENT SUMMARY**

June 2004

Accident Comparison for the month of June

	<b>2004</b>	<b>2003</b>	<b>High</b>	<b>June 5-YEAR Low</b>	<b>Average</b>
<b>General Aviation</b> (FAR Parts 91,133,137,125,129 & Public Use)	10	10	19	10	14
Fatal Accidents	1	1	2	0	1.2
Fatalities	1	2	2	0	1.4
<b>Air Carrier (FAR Part 135)</b>	1	3	8	1	3
Fatal Accidents	1	1	1	0	0.6
Fatalities	1	3	4	0	1.6
<b>Air Carrier (FAR Part 121)</b>	0	0	0	0	0
Fatal Accidents	0	0	0	0	0
Fatalities	0	0	0	0	0
<b>Total Accidents</b>	11	13	27	11	17
Fatal	2	2	3	0	1.8
Fatalities	2	5	6	0	3

This document is for comparison only. Totals frequently change due to reclassification.

## SUMMARY

### June 2004

---

For the month of June, there were 10 General Aviation (GA) accidents, compared with 10 in June 2003. The 5-year average for GA accidents during the month of June is 14 events. There was one fatal GA accident in June 2004, resulting in one fatality. There was one fatal GA accident in June 2003 resulting in two fatalities.

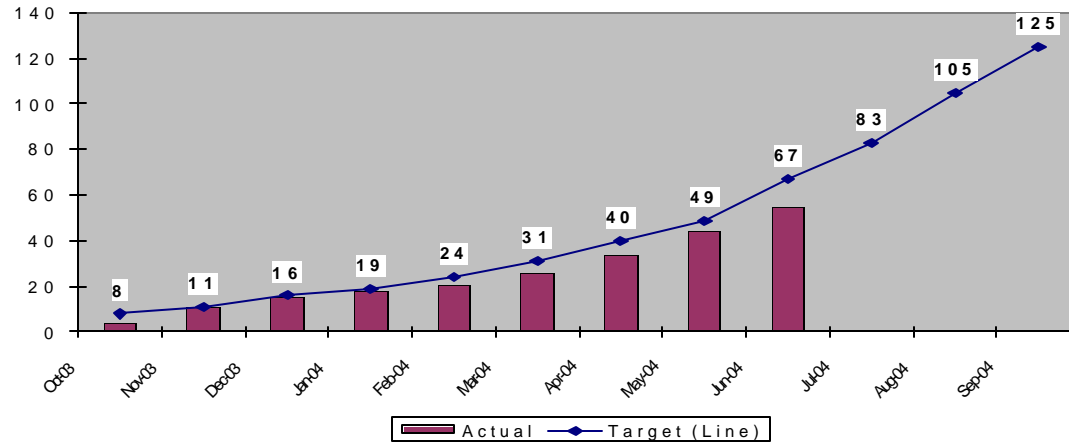
For the month of June, there was one FAR Part 135 Air Carrier accident, compared with three in June of 2003. The 5-year average for FAR Part 135 Air Carrier accidents during the month of June is three events. There was one fatal FAR Part 135 Air Carrier accident for the month of June in 2004. There was one fatal FAR Part 135 Air Carrier accident in June 2003, resulting in three fatalities.

There were no FAR Part 121 events for the month of June in 2004 or 2003.

There were a total of 11 aircraft accidents during June 2004. This is compared with 13 in June 2003. The 5-year average for accidents during the month of June is 17 events. There were two fatal accidents for the month of June 2004, resulting in two fatalities. There were two fatal events in June 2003 resulting in five fatalities.

**Note: Statistics contained in this report June differ from past reports produced by the System Safety Analysis Branch. This is caused by frequent reclassifications of events by the National Transportation Safety Board.**

**Status of FAA Performance Targets  
Alaska GA & 135 Accidents  
Fiscal Year to Date  
Cummulative Total**



**Description**

Reduce accidents in Alaska for General Aviation and all Part 135 operations by 20% by Fiscal Year (FY) 2008 (from the 2000-2002 average of 130 accidents per year to no more than 104 accidents per year). (FY2004 target is no more than 125 accidents)

This chart indicates the monthly total of Alaskan accidents. The graph shows the cumulative number of Alaskan accidents versus the target.

	Actual	Target (Line)	Index Range
Oct-03	4	8	Green
Nov-03	11	11	Yellow
Dec-03	15	16	Green
Jan-04	18	19	Green
Feb-04	21	24	Green
Mar-04	26	31	Green
Apr-04	34	40	Green
May-04	44	49	Green
Jun-04	55	67	Green
Jul-04		83	
Aug-04		105	
Sep-04		125	

## GENERAL AVIATION TOTAL

Year	JAN	FEB	MAR	APR	MAY	JUN	JUL	AUG	SEP	OCT	NOV	DEC	TOTAL
94	3	5	4	3	8	10	13	23	15	4	2	7	97
95	4	0	8	8	9	26	23	28	17	11	4	4	142
96	2	0	11	18	12	11	13	19	26	5	1	1	119
97	6	5	15	15	11	13	10	16	18	4	0	2	115
98	2	3	8	6	14	21	22	16	23	4	2	2	123
99	2	2	8	9	10	15	17	23	21	2	3	2	114
2000	0	4	3	11	9	17	11	14	18	9	3	6	105
2001	2	4	7	7	5	14	12	26	17	3	0	0	97
2002	1	2	5	2	8	19	12	20	13	8	3	6	99
2003	0	3	7	5	5	10	15	17	20	4	5	3	94
2004	2	2	4	6	8	10							32
5 Yr. Ave.	1	3	5.2	6.2	7	14	13.4	20	17.8	5.2	2.8	3.4	101.8
MAX	2	4	7	11	9	19	17	26	21	9	5	6	114
MIN	0	2	3	2	5	10	11	14	13	2	0	0	94

AAL-240

System Safety Analysis Branch

## GENERAL AVIATION FATAL ACCIDENTS

Year	JAN	FEB	MAR	APR	MAY	JUN	JUL	AUG	SEP	OCT	NOV	DEC	TOTAL
94	1	1	0	0	0	1	0	3	2	0	0	0	8
95	0	0	0	1	2	3	4	4	2	0	0	0	16
96	0	0	0	1	1	1	2	3	4	1	0	0	13
97	0	2	3	3	0	1	0	1	2	1	0	0	13
98	0	0	0	1	2	1	3	1	1	0	0	0	9
99	0	0	0	0	2	1	0	5	0	0	0	0	8
2000	0	0	0	0	1	2	2	2	0	1	0	2	10
2001	0	0	0	0	0	0	1	2	0	0	0	0	3
2002	0	0	1	1	1	2	1	3	0	0	0	1	10
2003	0	0	0	0	0	1	2	2	1	0	0	0	6
2004	0	0	0	0	1	1							2
5 Yr. Ave	0	0	0.2	0.2	0.6	1.2	1.2	2.8	0.2	0.2	0	0.6	7.4
MAX	0	0	1	1	1	2	2	5	1	1	0	2	10
MIN	0	0	0	0	0	0	0	2	0	0	0	0	3

AAL-240

System Safety Analysis Branch

## GENERAL AVIATION FATALITIES

Year	JAN	FEB	MAR	APR	MAY	JUN	JUL	AUG	SEP	OCT	NOV	DEC	TOTAL
94	1	1	0	0	0	3	0	6	3	0	0	0	14
95	0	0	0	2	3	14	9	6	3	0	0	0	37
96	0	0	0	1	2	1	3	4	8	1	0	0	20
97	0	4	6	6	0	4	0	3	3	1	0	0	27
98	0	0	0	1	4	1	5	1	1	0	0	0	13
99	0	0	0	0	3	1	0	11	0	0	0	0	15
<b>2000</b>	<b>0</b>	<b>0</b>	<b>0</b>	<b>0</b>	<b>1</b>	<b>2</b>	<b>2</b>	<b>4</b>	<b>0</b>	<b>1</b>	<b>0</b>	<b>4</b>	<b>14</b>
<b>2001</b>	<b>0</b>	<b>0</b>	<b>0</b>	<b>0</b>	<b>0</b>	<b>0</b>	<b>4</b>	<b>2</b>	<b>0</b>	<b>0</b>	<b>0</b>	<b>0</b>	<b>6</b>
<b>2002</b>	<b>0</b>	<b>0</b>	<b>1</b>	<b>1</b>	<b>2</b>	<b>2</b>	<b>2</b>	<b>5</b>	<b>0</b>	<b>0</b>	<b>0</b>	<b>1</b>	<b>14</b>
<b>2003</b>	<b>0</b>	<b>0</b>	<b>0</b>	<b>0</b>	<b>0</b>	<b>2</b>	<b>9</b>	<b>5</b>	<b>3</b>	<b>0</b>	<b>0</b>	<b>0</b>	<b>19</b>
<b>2004</b>	<b>0</b>	<b>0</b>	<b>0</b>	<b>0</b>	<b>1</b>	<b>1</b>							<b>2</b>
<b>5 Yr. Ave</b>	<b>0</b>	<b>0</b>	<b>0.2</b>	<b>0.2</b>	<b>0.8</b>	<b>1.4</b>	<b>3.4</b>	<b>5.4</b>	<b>0.6</b>	<b>0.2</b>	<b>0</b>	<b>1</b>	<b>13.6</b>
<b>MAX</b>	<b>0</b>	<b>0</b>	<b>1</b>	<b>1</b>	<b>2</b>	<b>2</b>	<b>9</b>	<b>11</b>	<b>3</b>	<b>1</b>	<b>0</b>	<b>4</b>	<b>19</b>
<b>MIN</b>	<b>0</b>	<b>0</b>	<b>0</b>	<b>0</b>	<b>0</b>	<b>0</b>	<b>0</b>	<b>2</b>	<b>0</b>	<b>0</b>	<b>0</b>	<b>0</b>	<b>6</b>

**AAL-240**

**System Safety Analysis Branch**

## AIR CARRIER TOTAL (FAR 135)

Year	JAN	FEB	MAR	APR	MAY	JUN	JUL	AUG	SEP	OCT	NOV	DEC	TOTAL
94	0	1	1	2	1	2	8	8	3	1	3	4	34
95	2	2	4	0	4	3	4	3	2	0	2	3	29
96	0	0	3	2	3	2	4	7	7	1	2	3	34
97	2	2	2	6	1	2	7	5	7	2	2	1	39
98	1	4	0	3	6	5	2	3	8	4	0	3	39
99	3	1	2	7	0	5	1	3	5	6	1	4	38
2000	1	4	4	1	2	2	1	3	4	2	3	1	28
2001	4	0	0	3	2	1	6	3	1	3	0	0	23
2002	1	4	3	1	1	8	4	8	3	2	1	0	36
2003	1	1	0	2	2	3	4	3	2	0	2	1	21
2004	1	1	1	2	2	1							8
5 Yr. Ave.	1.6	2	1.6	1.8	1.8	3	3.2	4	3	2.6	1.4	1.2	29.2
MAX	4	4	4	3	2	8	6	8	5	6	3	4	38
MIN	1	0	0	1	1	1	1	3	1	0	0	0	21

**AAL-240**

**System Safety Analysis Branch**



## AIR CARRIER FATAL ACCIDENTS (FAR 135)

Year	JAN	FEB	MAR	APR	MAY	JUN	JUL	AUG	SEP	OCT	NOV	DEC	TOTAL
94	0	0	0	0	0	1	1	3	0	0	1	2	8
95	0	1	0	0	0	1	1	1	0	0	0	0	4
96	0	0	0	0	0	0	1	1	1	1	2	1	7
97	1	0	0	1	0	1	2	1	1	1	1	0	9
98	0	1	0	0	1	0	0	1	2	0	0	0	5
99	0	0	0	1	0	2	0	0	1	0	0	1	5
2000	0	1	0	0	0	1	0	0	2	0	0	0	4
2001	1	0	0	0	0	0	2	0	0	2	0	0	5
2002	1	1	0	0	0	0	1	1	0	0	0	0	4
2003	0	0	0	0	1	1	1	1	0	0	0	0	4
2004	0	0	0	1	0	1							2
5 Yr. Ave.	0.4	0.4	0	0.2	0.2	0.6	0.8	0.4	0.6	0.4	0	0.2	4.4
MAX	1	1	0	1	1	1	2	1	2	2	0	1	5
MIN	0	0	0	0	0	0	0	0	0	0	0	0	4

**AAL-240**

**System Safety Analysis Branch**

## AIR CARRIER FATALITIES (FAR 135)

Year	JAN	FEB	MAR	APR	MAY	JUN	JUL	AUG	SEP	OCT	NOV	DEC	TOTAL
94	0	0	0	0	0	7	3	12	0	0	1	6	29
95	0	1	0	0	0	4	6	2	0	0	0	0	13
96	0	0	0	0	0	0	1	2	3	3	3	1	13
97	1	0	0	5	0	2	8	1	1	2	8	0	28
98	0	1	0	0	2	0	0	1	6	0	0	0	10
99	0	0	0	1	0	8	0	0	1	0	0	6	16
2000	0	6	0	0	0	4	0	0	6	0	0	2	18
2001	2	0	0	0	0	0	7	0	0	13	0	0	22
2002	1	1	0	0	0	0	4	2	0	0	0	0	8
2003	0	0	0	0	4	3	1	2	0	0	0	0	10
2004	0	0	0	1	0	1							2
5 Yr. Ave.	0.6	1.4	0	0.2	0.8	1.6	2.4	0.8	1.4	2.6	0	1.6	14.8
MAX	2	6	0	1	4	4	7	2	6	13	0	6	22
MIN	0	0	0	0	0	0	0	0	0	0	0	0	8

AAL-240

System Safety Analysis Branch

## SUBTOTAL AK GOAL ACCIDENTS (GA & FAR 135)

Year	JAN	FEB	MAR	APR	MAY	JUN	JUL	AUG	SEP	OCT	NOV	DEC	TOTAL
94	3	6	5	5	9	12	20	33	17	5	5	11	131
95	6	2	12	8	13	29	27	30	19	11	6	7	171
96	2	0	14	20	15	12	18	24	33	6	3	4	153
97	8	7	16	20	12	15	18	24	33	7	2	3	154
98	4	7	8	10	19	26	24	21	32	8	2	5	162
99	5	3	10	16	11	20	17	26	26	8	4	6	152
2000	1	8	7	12	11	18	12	17	22	12	6	6	133
2001	7	4	7	10	7	17	19	30	18	7	0	0	120
2002	2	6	8	3	11	27	16	24	16	9	4	7	135
2003	1	4	8	7	7	13	20	20	22	4	7	4	115
2004	3	3	5	8	10	11							40
5 Yr. Ave.	2.8	5	7	8	9.2	17.2	16.8	23.4	20.8	8	4.2	4.6	131
MAX	7	8	8	12	11	27	20	30	26	12	7	7	152
MIN	1	3	5	3	7	11	12	17	16	4	0	0	115

**AAL-240**

**System Safety Analysis Branch**

## SUBTOTAL AK GOAL FATAL ACCIDENTS(GA & FAR 135)

Year	JAN	FEB	MAR	APR	MAY	JUN	JUL	AUG	SEP	OCT	NOV	DEC	TOTAL
94	1	1	0	0	0	2	1	6	2	0	1	2	16
95	0	1	0	1	2	4	5	5	2	0	0	0	20
96	0	0	0	1	1	1	3	4	5	2	2	1	20
97	1	2	3	4	0	2	2	2	3	2	1	0	22
98	0	1	0	1	3	1	3	2	3	0	0	0	14
99	0	0	0	1	2	3	0	5	1	0	0	1	13
2000	0	1	0	0	1	3	2	2	2	1	0	2	14
2001	1	0	0	0	0	0	3	2	0	2	0	0	8
2002	1	1	1	1	1	2	2	4	0	0	0	1	14
2003	0	0	0	0	1	2	3	3	1	0	0	0	10
2004	0	0	0	1	1	2							4
5 Yr. Ave.	0.4	0.4	0.2	0.4	0.8	1.8	2	3.2	0.8	0.6	0	0.8	11.8
MAX	1	1	1	1	1	3	3	5	2	2	0	2	14
MIN	0	0	0	0	0	0	0	2	0	0	0	0	8

**AAL-240**

**System Safety Analysis Branch**

## SUBTOTAL AK Goal FATALITIES (GA & FAR 135)

Year	JAN	FEB	MAR	APR	MAY	JUN	JUL	AUG	SEP	OCT	NOV	DEC	TOTAL
94	1	1	0	0	0	10	3	18	3	0	1	6	43
95	0	1	0	2	3	18	15	8	3	0	0	0	50
96	0	0	0	1	2	1	4	6	11	4	3	1	33
97	1	4	6	11	0	6	8	4	4	3	8	0	55
98	0	1	0	1	6	1	5	2	7	0	0	0	23
99	0	0	0	1	3	9	0	11	1	0	0	6	31
2000	0	6	0	0	1	6	2	4	6	1	0	6	32
2001	2	0	0	0	0	0	11	2	0	13	0	0	28
2002	1	1	1	1	2	2	6	7	0	0	0	1	22
2003	0	0	0	0	4	5	10	7	3	0	0	0	29
2004	0	0	0	1	1	2							4
5 Yr. Ave.	0.6	1.4	0.2	0.4	1.6	3	5.8	6.2	2	2.8	0	2.6	28.4
MAX	2	6	1	1	4	6	11	11	6	13	0	6	32
MIN	0	0	0	0	0	0	0	2	0	0	0	0	22

AAL-240

System Safety Analysis Branch

## AIR CARRIER TOTAL (FAR 121)

Year	JAN	FEB	MAR	APR	MAY	JUN	JUL	AUG	SEP	OCT	NOV	DEC	TOTAL
94	0	0	0	0	0	0	0	0	0	0	1	1	2
95	0	0	0	0	0	1	1	0	0	0	0	0	2
96	0	2	0	0	1	0	2	0	0	0	0	1	6
97	0	0	0	1	0	0	0	1	0	1	0	0	3
98	1	0	0	0	0	1	0	1	0	0	2	0	5
99	0	0	0	0	2	0	1	2	0	0	0	0	5
2000	0	0	0	0	0	0	0	0	0	2	1	0	3
2001	1	0	0	0	0	0	1	1	1	0	0	1	5
2002	0	1	2	0	0	0	1	0	0	0	0	0	4
2003	1	0	1	1	0	0	0	0	0	0	0	0	3
2004	0	0	0	0	1	0							1
5 Yr. Ave.	0.4	0.2	0.6	0.2	0.2	0	0.6	0.6	0.2	0.4	0.2	0.2	4
MAX	1	1	2	1	1	0	1	2	1	2	1	1	5
MIN	0	0	0	0	0	0	0	0	0	0	0	0	3

**AAL-240**

**System Safety Analysis Branch**

## AIR CARRIER FATAL ACCIDENTS (FAR 121)

Year	JAN	FEB	MAR	APR	MAY	JUN	JUL	AUG	SEP	OCT	NOV	DEC	TOTAL
94	0	0	0	0	0	0	0	0	0	0	0	0	0
95	0	0	0	0	0	0	0	0	0	0	0	0	0
96	0	0	0	0	0	0	2	0	0	0	0	0	2
97	0	0	0	0	0	0	0	0	0	0	0	0	0
98	0	0	0	0	0	0	0	0	0	0	0	0	0
99	0	0	0	0	1	0	0	0	0	0	0	0	1
2000	0	0	0	0	0	0	0	0	0	0	0	0	0
2001	0	0	0	0	0	0	0	0	0	0	0	0	0
2002	0	0	0	0	0	0	0	0	0	0	0	0	0
2003	0	0	0	0	0	0	0	0	0	0	0	0	0
2004	0	0	0	0	0	0	0	0	0	0	0	0	0
5 Yr. Ave.	0	0	0	0	0	0	0	0	0	0	0	0	0.2
MAX	0	0	0	0	0	0	0	0	0	0	0	0	1
MIN	0	0	0	0	0	0	0	0	0	0	0	0	0

AAL-240

System Safety Analysis Branch

## AIR CARRIER FATALITIES (FAR 121)

Year	JAN	FEB	MAR	APR	MAY	JUN	JUL	AUG	SEP	OCT	NOV	DEC	TOTAL
94	0	0	0	0	0	0	0	0	0	0	0	0	0
95	0	0	0	0	0	0	0	0	0	0	0	0	0
96	0	0	0	0	0	0	5	0	0	0	0	0	5
97	0	0	0	0	0	0	0	0	0	0	0	0	0
98	0	0	0	0	0	0	0	0	0	0	0	0	0
99	0	0	0	0	1	0	0	0	0	0	0	0	1
2000	0	0	0	0	0	0	0	0	0	0	0	0	0
2001	0	0	0	0	0	0	0	0	0	0	0	0	0
2002	0	0	0	0	0	0	0	0	0	0	0	0	0
2003	0	0	0	0	0	0	0	0	0	0	0	0	0
2004	0	0	0	0	0	0	0	0	0	0	0	0	0
5 Yr. Ave.	0	0	0	0	0	0	0	0	0	0	0	0	0.2
MAX	0	0	0	0	0	0	0	0	0	0	0	0	1
MIN	0	0	0	0	0	0	0	0	0	0	0	0	0

AAL-240

System Safety Analysis Branch



## TOTAL ACCIDENTS All Events

Year	JAN	FEB	MAR	APR	MAY	JUN	JUL	AUG	SEP	OCT	NOV	DEC	TOTAL
94	3	6	5	5	9	12	21	31	18	5	6	12	133
95	6	2	12	8	13	30	28	31	19	11	6	7	173
96	2	2	14	20	16	13	19	26	33	6	3	5	159
97	8	7	17	22	12	15	17	22	25	7	2	3	157
98	4	7	8	9	20	27	24	20	31	8	4	5	167
99	5	3	10	16	12	20	19	28	26	8	4	6	157
2000	1	8	7	12	11	19	12	17	22	13	7	7	136
2001	7	4	7	10	7	15	19	30	19	6	0	1	125
2002	2	7	10	3	9	27	17	28	16	10	4	6	139
2003	2	4	8	8	7	13	19	20	22	4	7	4	118
2004	3	3	5	8	11	11							41
5 Yr. Ave.	3	5.2	7.4	8.2	9	17	17.2	24.6	21	8.2	4.4	4.8	135
MAX	7	8	10	12	11	27	19	30	26	13	7	7	157
MIN	1	3	5	3	7	11	12	17	16	4	0	1	118

**AAL-240**

**System Safety Analysis Branch**

## TOTAL FATAL ACCIDENTS All Events

Year	JAN	FEB	MAR	APR	MAY	JUN	JUL	AUG	SEP	OCT	NOV	DEC	TOTAL
94	1	1	0	0	0	2	1	6	2	0	1	2	16
95	0	1	0	1	2	4	5	5	2	0	0	0	20
96	0	0	0	1	1	1	5	4	5	2	2	1	22
97	1	2	3	4	0	2	2	2	3	2	1	0	22
98	0	1	0	1	3	1	3	2	3	0	0	0	14
99	0	0	0	1	3	3	0	5	1	0	0	1	14
2000	0	1	0	0	1	3	2	2	2	1	0	2	14
2001	1	0	0	0	0	0	3	2	0	2	0	0	8
2002	1	1	1	1	1	2	2	4	0	0	0	1	14
2003	0	0	0	0	1	2	3	3	1	0	0	0	10
2004	0	0	0	1	1	2							4
5 Yr. Ave.	0.4	0.4	0.2	0.4	0.8	1.8	2	3.2	0.8	0.6	0	0.8	12
MAX	1	1	1	1	1	3	3	5	2	2	0	2	14
MIN	0	0	0	0	0	0	0	2	0	0	0	0	8

**AAL-240**

**System Safety Analysis Branch**

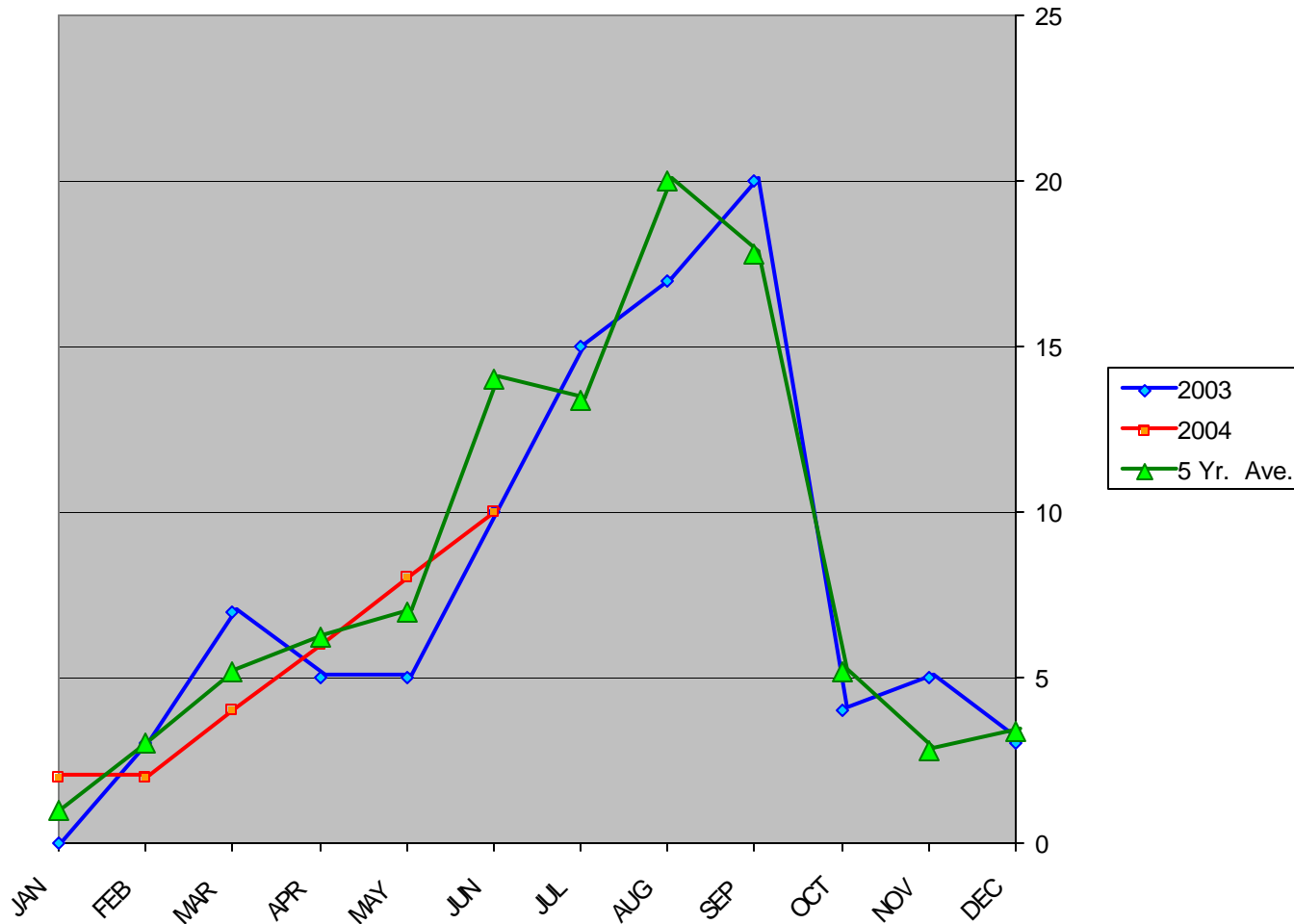
## TOTAL FATALITIES (All Events)

Year	JAN	FEB	MAR	APR	MAY	JUN	JUL	AUG	SEP	OCT	NOV	DEC	TOTAL
94	1	1	0	0	0	10	3	18	3	0	1	6	43
95	0	1	0	2	3	18	15	8	3	0	0	0	50
96	0	0	0	1	2	1	9	6	11	4	3	1	38
97	1	4	6	11	0	6	8	4	4	3	8	0	55
98	0	1	0	1	6	1	5	2	7	0	0	0	23
99	0	0	0	1	4	9	0	11	1	0	0	6	32
2000	0	6	0	0	1	6	2	4	6	1	0	6	32
2001	2	0	0	0	0	0	11	2	0	13	0	0	28
2002	1	1	1	1	2	2	6	7	0	0	0	1	22
2003	0	0	0	0	4	5	10	7	3	0	0	0	29
2004	0	0	0	1	1	2							4
5 Yr. Ave.	0.6	1.4	0.2	0.4	1.6	3	5.8	6.2	2	2.8	0	2.6	28.6
MAX	2	6	1	1	4	6	11	11	6	13	0	6	32
MIN	0	0	0	0	0	0	0	2	0	0	0	0	22

**AAL-240**

**System Safety Analysis Branch**

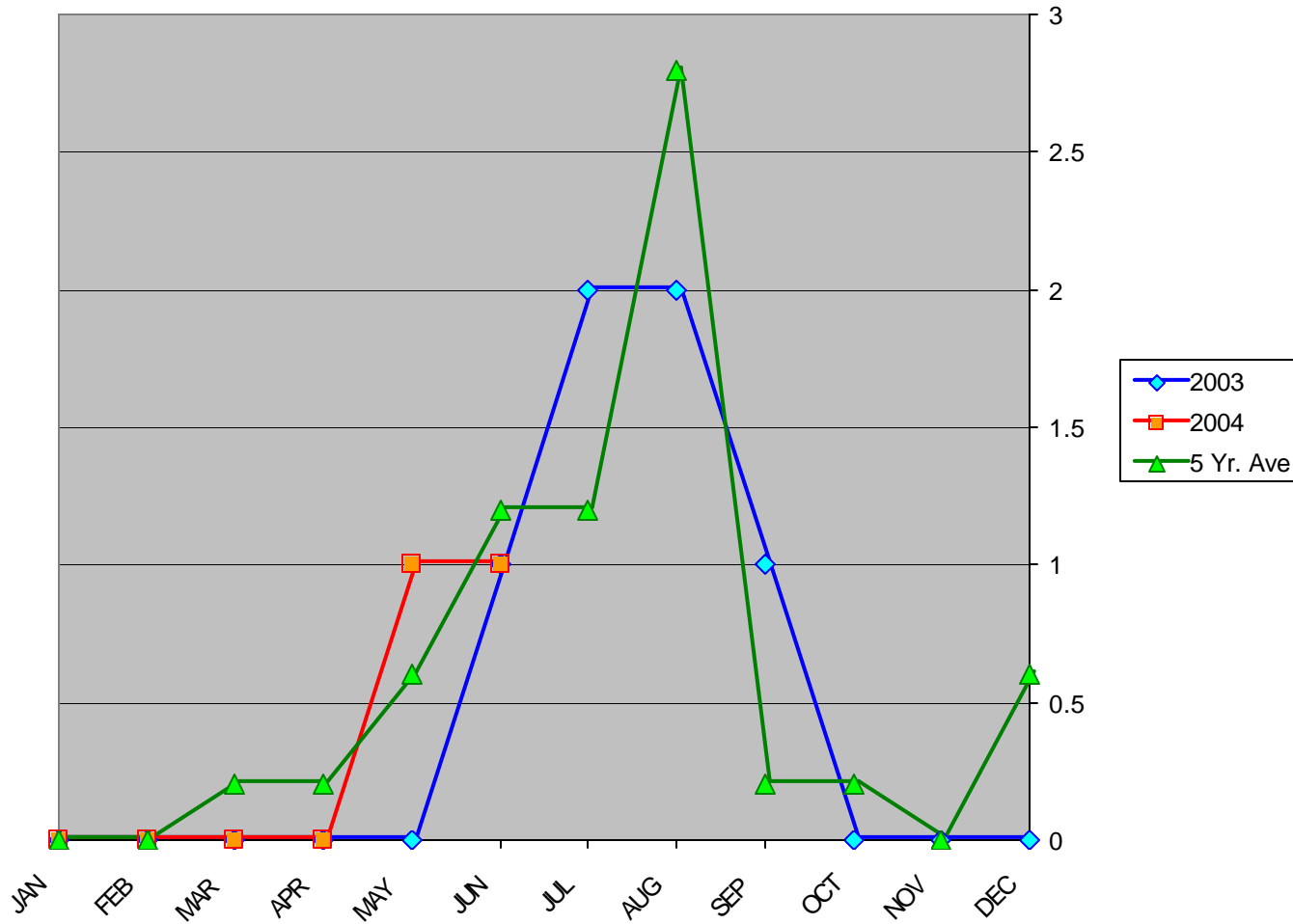
## General Aviation Accidents in Alaska



AAL-240

System Safety Analysis Branch

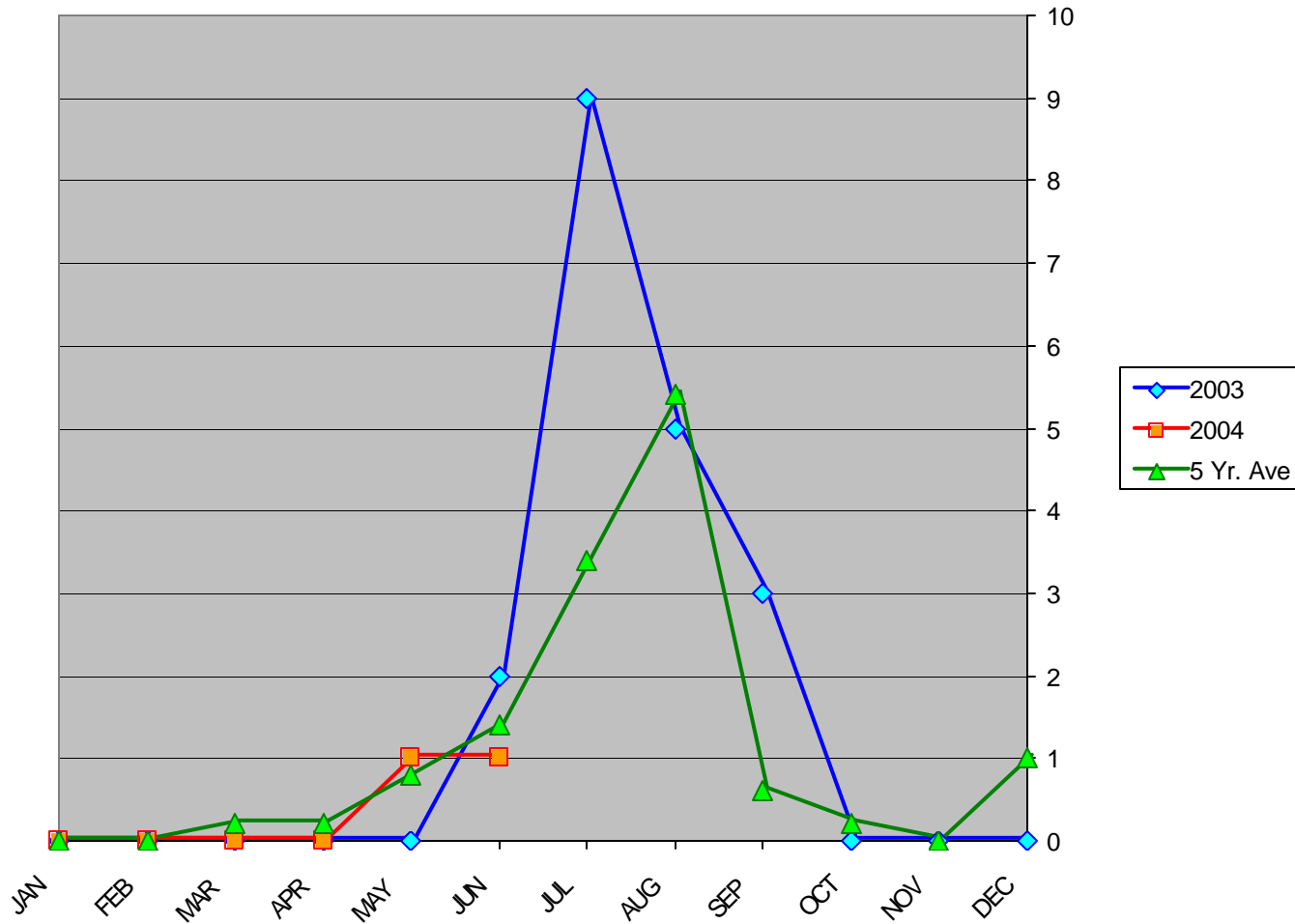
# General Aviation Fatal Accidents in Alaska



AAL-240

System Safety Analysis Branch

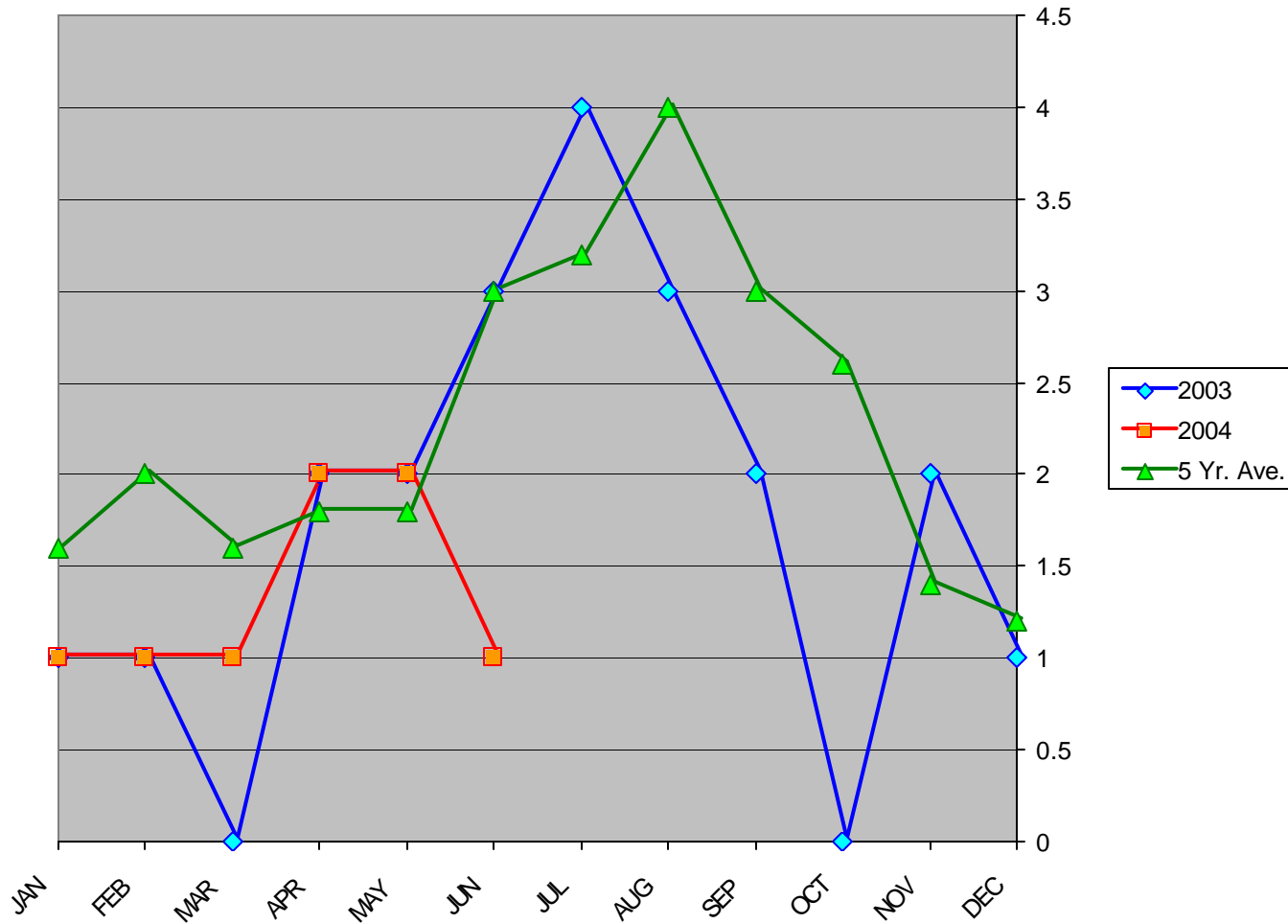
## General Aviation Fatalities in Alaska



AAL-240

System Safety Analysis Branch

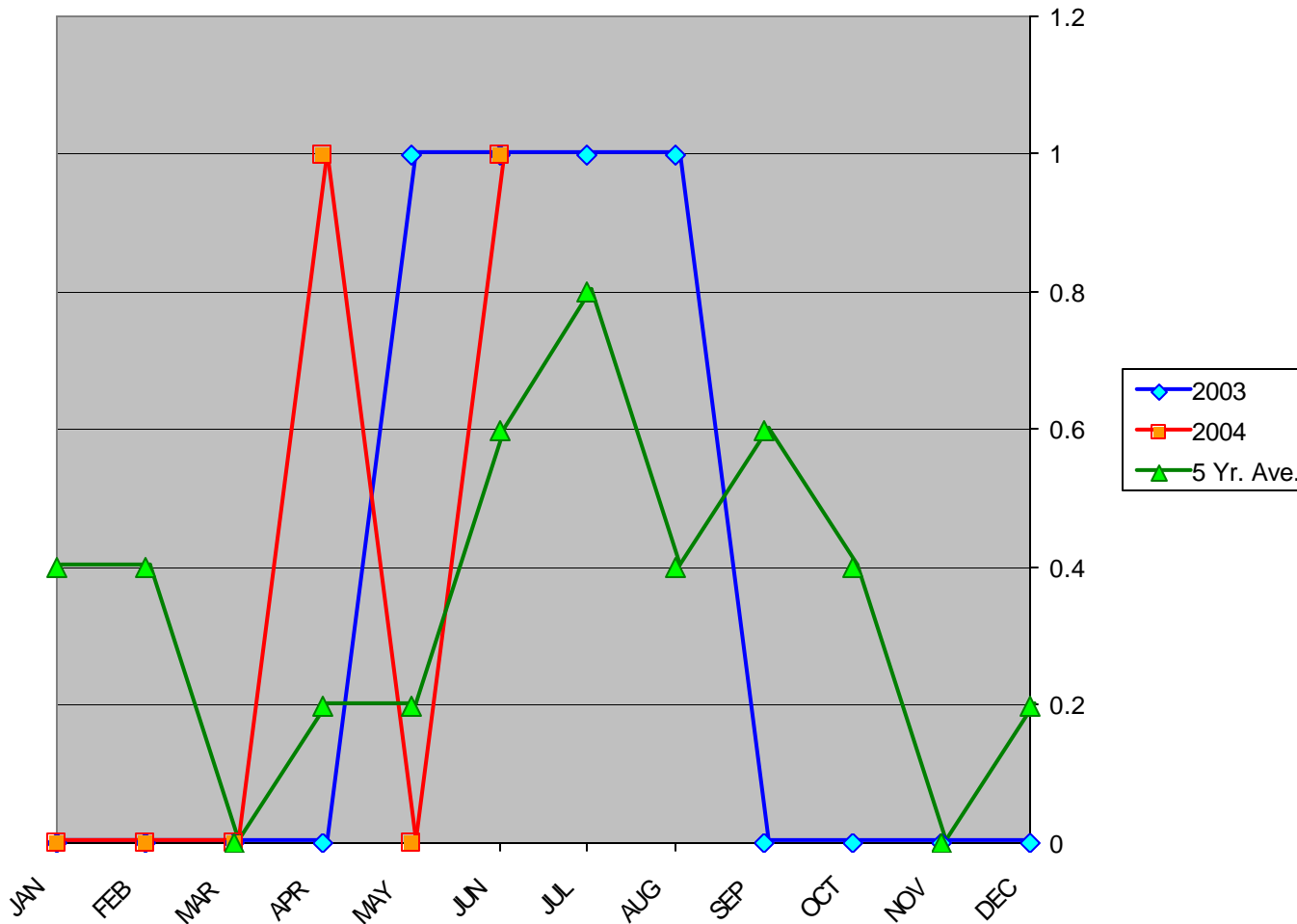
## Air Carrier (Part 135) Accidents in Alaska



AAL-240

System Safety Analysis Branch

## Air Carrier (FAR 135) Fatal Accidents in Alaska

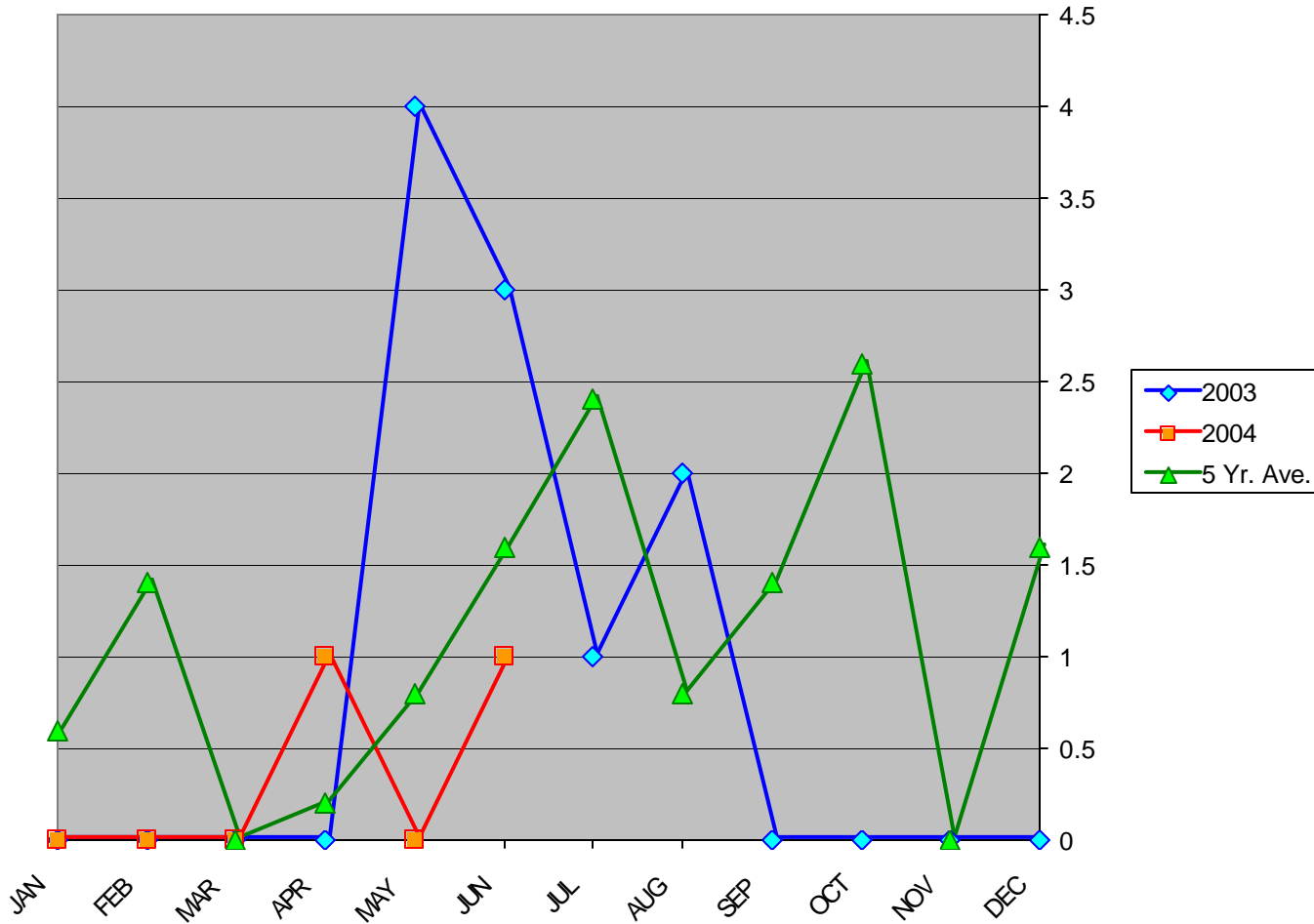


AAL-240

System Safety Analysis Branch



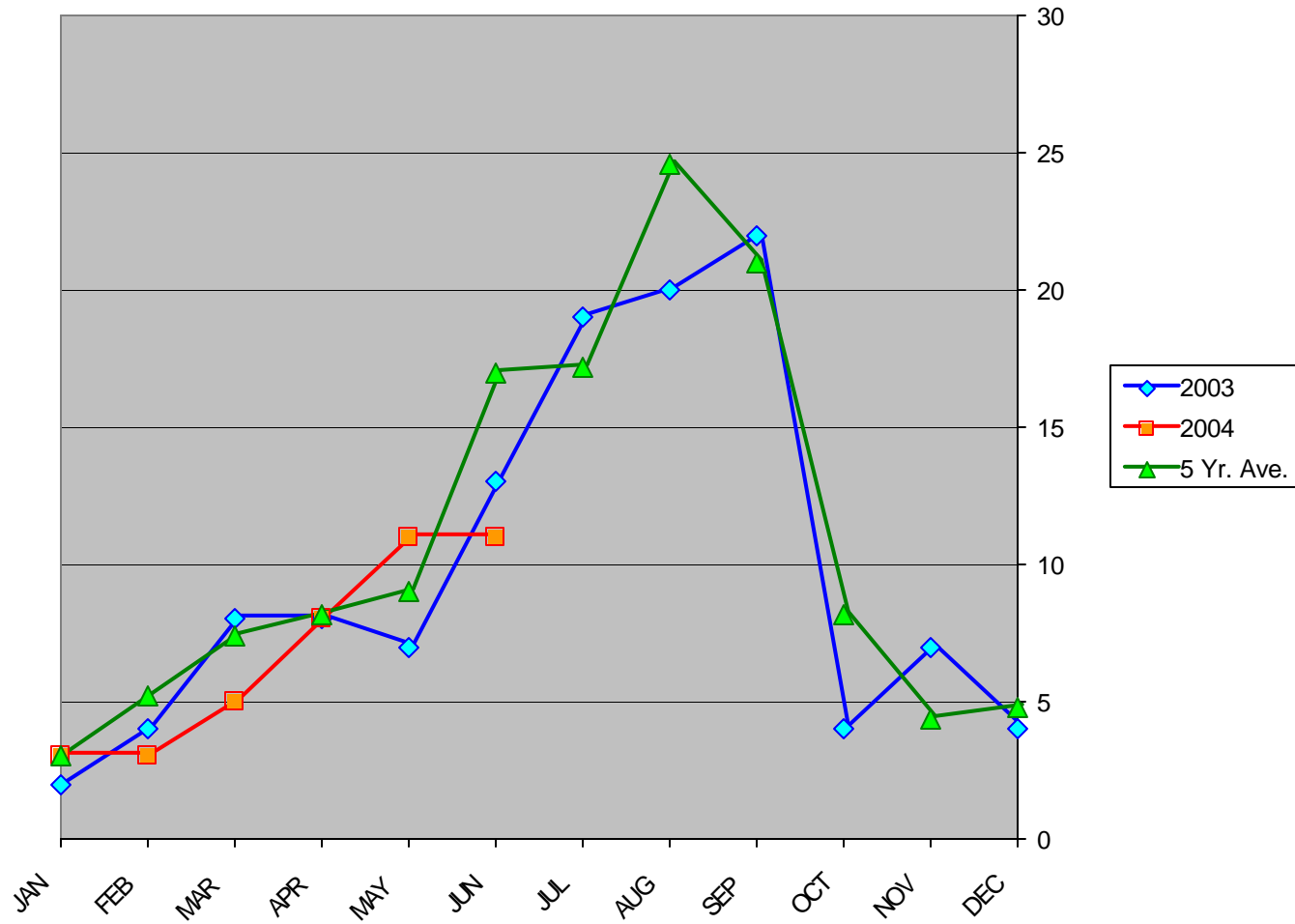
## Air Carrier (FAR 135) Fatalities in Alaska



AAL-240

System Safety Analysis Branch

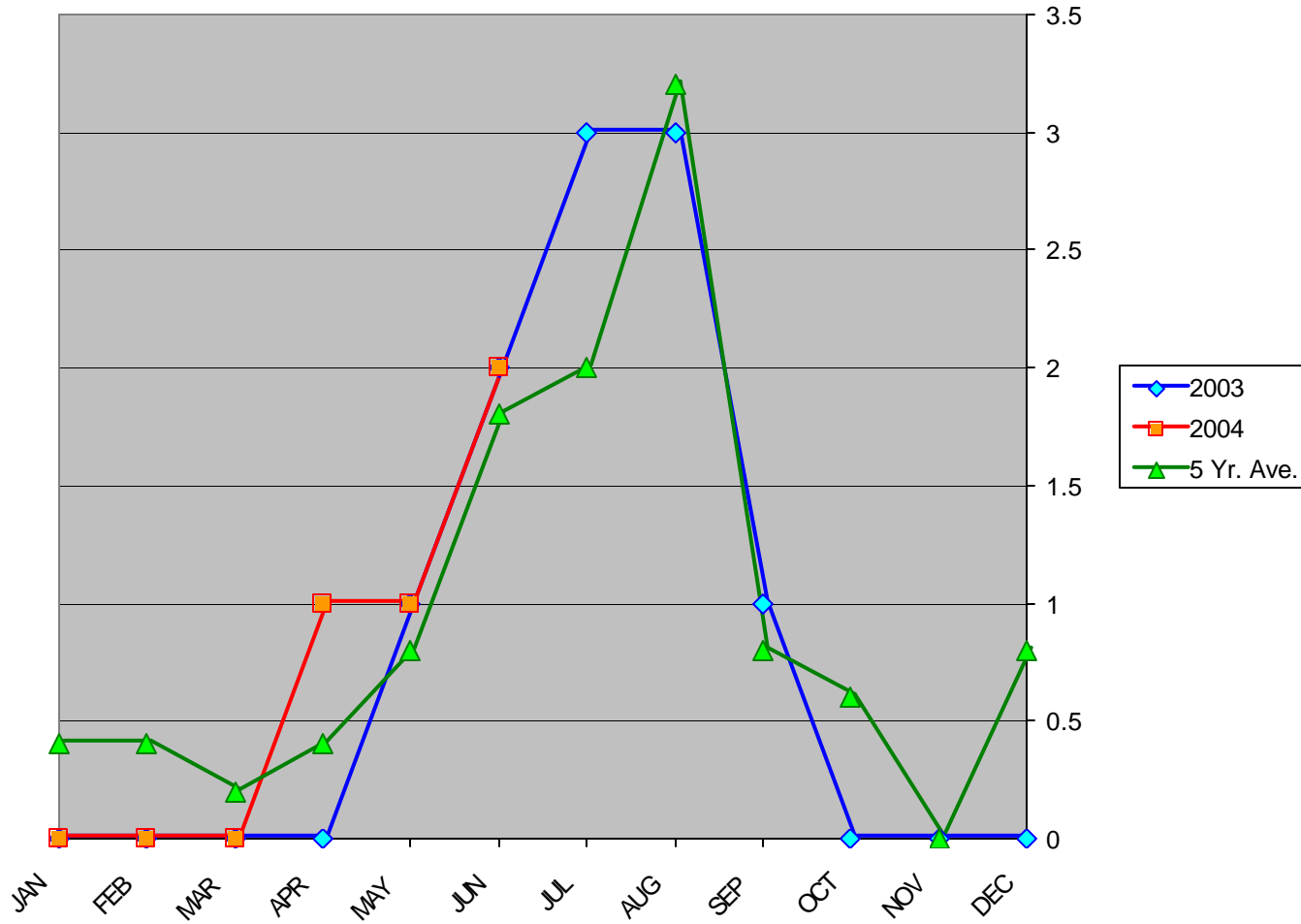
# Total Accidents in Alaska



AAL-240

System Safety Analysis Branch

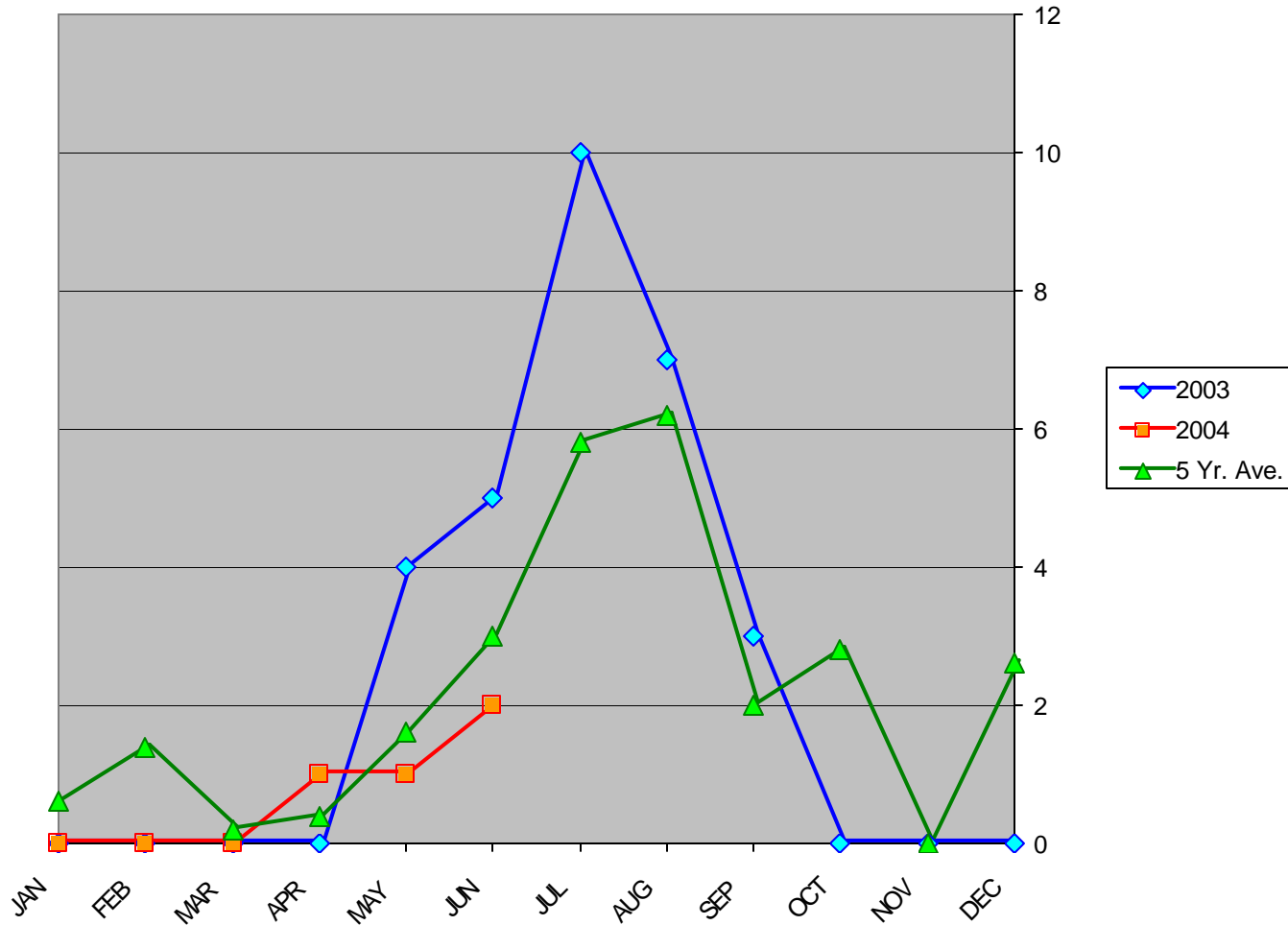
# Total Fatal Accidents in Alaska



AAL-240

System Safety Analysis Branch

# Total Fatalities in Alaska



AAL-240

System Safety Analysis Branch