



Alaska Accident Statistics

August 2005

AAL-240

System Safety Analysis Branch

**FAA ALASKAN REGION
MONTHLY AIRCRAFT ACCIDENT SUMMARY**

August 2005

Accident Comparison for the month of August

	2005	2004	High	August 5-YEAR Low	Average
General Aviation (FAR Parts 91,133,137,125,129 & Public Use)	15	11	26	11	17.8
Fatal Accidents	1	3	3	1	2.2
Fatalities	2	4	5	2	3.6
Air Carrier (FAR Part 135)	2	3	8	2	3.8
Fatal Accidents	0	0	1	0	0.4
Fatalities	0	0	2	0	0.8
Air Carrier (FAR Part 121)	0	0	1	0	0.2
Fatal Accidents	0	0	0	0	0
Fatalities	0	0	0	0	0
Total Accidents	17	14	30	14	21.8
Fatal	1	3	4	1	2.6
Fatalities	2	4	7	2	4.4

This document is for comparison only. Totals frequently change due to reclassification.

SUMMARY

August 2005

For the month of August there were 15 General Aviation (GA) accidents, compared with 11 in August 2004. The 5-year average for GA accidents during the month of August is 17.8 events. There was one fatal GA accident resulting in two fatalities in August 2005. There were three fatal GA accidents resulting in four fatalities in August 2004.

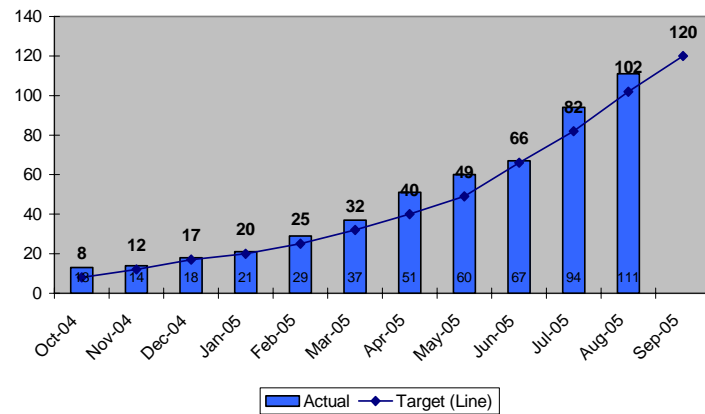
For the month of August there were two Part 135 Air Carrier accidents, compared with three in August of 2004. The 5-year average for 135 Air Carrier accidents during the month of August is 3.8 events. There were no fatal Part 135 Air Carrier accidents for the month of August in 2005 or 2004.

There were no Part 121 events for the month of August in 2005 or 2004.

There were a total of 17 aircraft accidents during August 2005. This is compared with 14 in August 2004. The 5-year average for accidents during the month of August is 21.8 events. There was one fatal event in August 2005 resulting in two fatalities. There were three fatal events in August 2004 resulting in four fatalities.

Note: Statistics contained in this report August differ from past reports produced by the System Safety Analysis Branch. This is caused by frequent reclassifications of events by the National Transportation Safety Board. The format of this report has been modified to display statistics by fiscal year instead of calendar year.

**Status of FAA Performance Targets
Alaska GA & 135 Accidents
Fiscal Year to Date
Cummulative Total**



Description

Reduce accidents in Alaska for General Aviation and all Part 135 operations by 20% by Fiscal Year (FY) 2009 (from the 2000-2002 average of 130 accidents per year to no more than 99 accidents per year). (FY2005 target is no more than 120 accidents)

This chart indicates the monthly total of Alaskan accidents. The graph shows the cumulative number of Alaskan accidents versus the target.

	Actual	Target (Line)	Index Range
Oct-04	13	8	Red
Nov-04	14	12	Red
Dec-04	18	17	Red
Jan-05	21	20	Red
Feb-05	29	25	Red
Mar-05	37	32	Red
Apr-05	51	40	Red
May-05	60	49	Red
Jun-05	67	66	Red
Jul-05	94	82	Red
Aug-05	111	102	Red
Sep-05		120	

GENERAL AVIATION TOTAL

FY	OCT	NOV	DEC	JAN	FEB	MAR	APR	MAY	JUN	JUL	AUG	SEP	TOTAL
95	4	2	7	4	0	8	8	9	26	23	28	17	136
96	11	4	4	2	0	11	18	12	11	13	19	26	131
97	5	1	1	6	5	15	15	11	13	10	16	18	116
98	4	0	2	2	3	8	6	14	21	22	16	23	121
99	4	2	2	2	2	8	9	10	15	17	23	21	115
2000	2	3	2	0	4	3	11	9	17	11	14	18	94
2001	9	3	6	2	4	7	7	5	14	12	26	17	112
2002	3	0	0	1	2	5	2	8	19	12	20	13	85
2003	8	3	6	0	3	7	5	5	10	15	17	20	99
2004	4	5	3	2	2	4	6	8	10	11	11	14	80
2005	11	1	3	3	6	7	12	7	6	20	15		91
5 Yr. Ave.	7	2.4	3.6	1.6	3.4	6	6.4	6.6	11.8	14	17.8	16.4	94
MAX	11	5	6	3	6	7	12	8	19	20	26	20	112
MIN	3	0	0	0	2	4	2	5	6	11	11	13	80

AAL-240

System Safety Analysis Branch

GENERAL AVIATION FATAL ACCIDENTS

FY	OCT	NOV	DEC	JAN	FEB	MAR	APR	MAY	JUN	JUL	AUG	SEP	TOTAL
95	0	0	0	0	0	0	1	2	3	4	4	2	16
96	0	0	0	0	0	0	1	1	1	2	3	4	12
97	1	0	0	0	2	3	3	0	1	0	1	2	13
98	1	0	0	0	0	0	1	2	1	3	1	1	10
99	0	0	0	0	0	0	0	2	1	0	5	0	8
2000	0	0	0	0	0	0	0	1	2	2	2	0	7
2001	1	0	2	0	0	0	0	0	0	1	2	0	6
2002	0	0	0	0	0	1	1	1	2	1	3	0	9
2003	0	0	1	0	0	0	0	0	1	2	2	1	7
2004	0	0	0	0	0	0	0	1	1	2	3	1	8
2005	1	0	0	0	1	0	1	0	0	3	1		7
5 Yr. Ave	0.4	0	0.6	0	0.2	0.2	0.4	0.4	0.8	1.8	2.2	0.4	7.4
MAX	1	0	2	0	1	1	1	1	2	3	3	1	9
MIN	0	0	0	0	0	0	0	0	0	1	1	0	6

AAI-240

System Safety Analysis Branch

GENERAL AVIATION FATALITIES

FY	OCT	NOV	DEC	JAN	FEB	MAR	APR	MAY	JUN	JUL	AUG	SEP	TOTAL
95	0	0	0	0	0	0	2	3	14	9	6	3	37
96	0	0	0	0	0	0	1	2	1	3	4	8	19
97	1	0	0	0	4	6	6	0	4	0	3	3	27
98	1	0	0	0	0	0	1	4	1	5	1	1	14
99	0	0	0	0	0	0	0	3	1	0	11	0	15
2000	0	0	0	0	0	0	0	1	2	2	4	0	9
2001	1	0	4	0	0	0	0	0	0	4	2	0	11
2002	0	0	0	0	0	1	1	2	2	2	5	0	13
2003	0	0	1	0	0	0	0	0	2	9	5	3	20
2004	0	0	0	0	0	0	0	1	1	8	4	2	16
2005	1	0	0	0	3	0	1	0	0	6	2		13
5 Yr.													
Ave	0.4	0	1	0	0.6	0.2	0.4	0.6	1	5.8	3.6	1	13.8
MAX	1	0	4	0	3	1	1	2	2	9	5	3	20
MIN	0	0	0	0	0	0	0	0	0	2	2	0	9

AAI-240

System Safety Analysis Branch

AIR CARRIER TOTAL (FAR 135)

FY	OCT	NOV	DEC	JAN	FEB	MAR	APR	MAY	JUN	JUL	AUG	SEP	TOTAL
95	1	3	4	2	2	4	0	4	3	4	3	2	32
96	0	2	3	0	0	3	2	3	2	4	7	7	33
97	1	2	3	2	2	2	6	1	2	7	5	7	40
98	2	2	1	1	4	0	3	6	5	2	3	8	37
99	4	0	3	3	1	2	7	0	5	1	3	5	34
2000	6	1	4	1	4	4	1	2	2	1	3	4	33
2001	2	3	1	4	0	0	3	2	1	6	3	1	26
2002	3	0	0	1	4	3	1	1	8	4	8	3	36
2003	2	1	0	1	1	0	2	2	3	4	3	2	21
2004	0	2	1	1	1	1	2	2	1	2	3	4	20
2005	2	0	1	0	2	1	2	2	1	7	2		20
5 Yr. Ave.	1.8	1.2	0.6	1.4	1.6	1	2	1.8	2.8	4.6	3.8	2.8	27.2
MAX	3	3	1	4	4	3	3	2	8	7	8	4	36
MIN	0	0	0	0	0	0	1	1	1	2	2	1	20

AIR CARRIER FATAL ACCIDENTS (FAR 135)

FY	OCT	NOV	DEC	JAN	FEB	MAR	APR	MAY	JUN	JUL	AUG	SEP	TOTAL
95	0	1	2	0	1	0	0	0	1	1	1	0	7
96	0	0	0	0	0	0	0	0	0	1	1	1	3
97	1	2	1	1	0	0	1	0	1	2	1	1	11
98	1	1	0	0	1	0	0	1	0	0	1	2	7
99	0	0	0	0	0	0	1	0	2	0	0	1	4
2000	0	0	1	0	1	0	0	0	1	0	0	2	5
2001	0	0	0	1	0	0	0	0	0	2	0	0	3
2002	2	0	0	1	1	0	0	0	0	1	1	0	6
2003	0	0	0	0	0	0	0	1	1	1	1	0	4
2004	0	0	0	0	0	0	1	0	1	0	0	1	3
2005	0	0	0	0	0	0	0	0	0	0	0		0
5 Yr. Ave.	0.4	0	0	0.4	0.2	0	0.2	0.2	0.4	0.8	0.4	0.6	4.2
MAX	2	0	0	1	1	0	1	1	1	2	1	2	6
MIN	0	0	0	0	0	0	0	0	0	0	0	0	3

AAI-240

System Safety Analysis Branch

AIR CARRIER FATALITIES (FAR 135)

FY	OCT	NOV	DEC	JAN	FEB	MAR	APR	MAY	JUN	JUL	AUG	SEP	TOTAL
95	0	1	6	0	1	0	0	0	4	6	2	0	20
96	0	0	0	0	0	0	0	0	0	1	2	3	6
97	3	3	1	1	0	0	5	0	2	8	1	1	25
98	2	8	0	0	1	0	0	2	0	0	1	6	20
99	0	0	0	0	0	0	1	0	8	0	0	1	10
2000	0	0	6	0	6	0	0	0	4	0	0	6	22
2001	0	0	2	2	0	0	0	0	0	7	0	0	11
2002	13	0	0	1	1	0	0	0	0	4	2	0	21
2003	0	0	0	0	0	0	0	4	3	1	2	0	10
2004	0	0	0	0	0	0	1	0	1	0	0	5	7
2005	0	0	0	0	0	0	0	0	0	0	0		0
5 Yr. Ave.	2.6	0	0.4	0.6	0.2	0	0.2	0.8	0.8	2.4	0.8	2.2	14.2
MAX	13	0	2	2	1	0	1	4	3	7	2	6	22
MIN	0	0	0	0	0	0	0	0	0	0	0	0	7

SUBTOTAL AK GOAL ACCIDENTS (GA & FAR 135)

FY	OCT	NOV	DEC	JAN	FEB	MAR	APR	MAY	JUN	JUL	AUG	SEP	TOTAL
95	5	5	11	6	2	12	8	13	29	27	31	19	168
96	11	6	7	2	0	14	20	15	13	17	26	33	164
97	6	3	4	8	7	17	21	12	15	17	21	25	156
98	6	2	3	3	7	8	9	20	26	24	19	31	158
99	8	2	5	5	3	10	16	10	20	18	26	26	149
2000	8	4	6	1	8	7	12	11	19	12	17	22	127
2001	11	6	7	6	4	7	10	7	15	18	29	18	138
2002	6	0	0	2	6	8	3	9	27	16	28	16	121
2003	10	4	6	1	4	7	7	7	13	19	20	22	120
2004	4	7	4	3	3	5	8	10	11	13	14	18	100
2005	13	1	4	3	8	8	14	9	7	27	17		111
5 Yr. Ave.	8.8	3.6	4.2	3	5	7	8.4	8.4	14.6	18.6	21.6	19.2	121.2
MAX	13	7	7	6	8	8	14	10	27	27	29	22	138
MIN	4	0	0	1	3	5	3	7	7	13	14	16	100

AAI-240

System Safety Analysis Branch

SUBTOTAL AK GOAL FATAL ACCIDENTS (GA & FAR 135)

FY	OCT	NOV	DEC	JAN	FEB	MAR	APR	MAY	JUN	JUL	AUG	SEP	TOTAL
95	0	1	2	0	1	0	1	2	4	5	5	2	23
96	0	0	0	0	0	0	1	1	1	3	4	5	15
97	2	2	1	1	2	3	4	0	2	2	2	3	24
98	2	1	0	0	1	0	1	3	1	3	2	3	17
99	0	0	0	0	0	0	1	2	3	0	5	1	12
2000	0	0	1	0	1	0	0	1	3	2	2	2	12
2001	1	0	2	1	0	0	0	0	0	3	2	0	9
2002	2	0	0	1	1	1	1	1	2	2	4	0	15
2003	0	0	1	0	0	0	0	1	2	3	3	1	11
2004	0	0	0	0	0	0	1	1	2	2	3	2	11
2005	1	0	0	0	1	0	1	0	0	3	1		7
5 Yr. Ave.	0.8	0	0.6	0.4	0.4	0.2	0.6	0.6	1.2	2.6	2.6	1	11.6
MAX	2	0	2	1	1	1	1	1	2	3	4	2	15
MIN	0	0	0	0	0	0	0	0	0	2	1	0	9

SUBTOTAL AK Goal FATALITIES (GA & FAR 135)

FY	OCT	NOV	DEC	JAN	FEB	MAR	APR	MAY	JUN	JUL	AUG	SEP	TOTAL
95	0	1	6	0	1	0	2	3	18	15	8	3	57
96	0	0	0	0	0	0	1	2	1	4	6	11	25
97	4	3	1	1	4	6	11	0	6	8	4	4	52
98	3	8	0	0	1	0	1	6	1	5	2	7	34
99	0	0	0	0	0	0	1	3	9	0	11	1	25
2000	0	0	6	0	6	0	0	1	6	2	4	6	31
2001	1	0	6	2	0	0	0	0	0	11	2	0	22
2002	13	0	0	1	1	1	1	2	2	6	7	0	34
2003	0	0	1	0	0	0	0	4	5	10	7	3	30
2004	0	0	0	0	0	0	1	1	2	8	4	7	23
2005	1	0	0	0	3	0	1	0	0	6	2		13
5 Yr. Ave.	3	0	1.4	0.6	0.8	0.2	0.6	1.4	1.8	8.2	4.4	3.2	28
MAX	13	0	6	2	3	1	1	4	5	11	7	7	34
MIN	0	0	0	0	0	0	0	0	0	6	2	0	22

AAL-240

System Safety Analysis Branch

AIR CARRIER TOTAL (FAR 121)

FY	OCT	NOV	DEC	JAN	FEB	MAR	APR	MAY	JUN	JUL	AUG	SEP	TOTAL
95	0	1	1	0	0	0	0	0	1	1	0	0	4
96	0	0	0	0	2	0	0	1	0	2	0	0	5
97	0	0	1	0	0	0	1	0	0	0	1	0	3
98	1	0	0	1	0	0	0	0	1	0	1	0	4
99	0	2	0	0	0	0	0	2	0	1	2	0	7
2000	0	0	0	0	0	0	0	0	0	0	0	0	0
2001	2	1	0	1	0	0	0	0	0	1	1	1	7
2002	0	0	1	0	1	2	0	0	0	1	0	0	5
2003	0	0	0	1	0	1	1	0	0	0	0	0	3
2004	0	0	0	0	0	0	0	1	0	0	0	0	1
2005	0	0	0	1	0	0	0	0	1	0	0		2
5 Yr. Ave.	0.4	0.2	0.2	0.6	0.2	0.6	0.2	0.2	0.2	0.4	0.2	0.2	3.2
MAX	2	1	1	1	1	2	1	1	1	1	1	1	7
MIN	0	0	0	0	0	0	0	0	0	0	0	0	0

AIR CARRIER FATAL ACCIDENTS (FAR 121)

FY	OCT	NOV	DEC	JAN	FEB	MAR	APR	MAY	JUN	JUL	AUG	SEP	TOTAL
95	0	0	0	0	0	0	0	0	0	0	0	0	0
96	0	0	0	0	0	0	0	0	0	2	0	0	2
97	0	0	0	0	0	0	0	0	0	0	0	0	0
98	0	0	0	0	0	0	0	0	0	0	0	0	0
99	0	0	0	0	0	0	0	1	0	0	0	0	1
2000	0	0	0	0	0	0	0	0	0	0	0	0	0
2001	0	0	0	0	0	0	0	0	0	0	0	0	0
2002	0	0	0	0	0	0	0	0	0	0	0	0	0
2003	0	0	0	0	0	0	0	0	0	0	0	0	0
2004	0	0	0	0	0	0	0	0	0	0	0	0	0
2005	0	0	0	0	0	0	0	0	0	0	0		0
5 Yr. Ave.	0	0	0	0	0	0	0	0	0	0	0	0	0
MAX	0	0	0	0	0	0	0	0	0	0	0	0	0
MIN	0	0	0	0	0	0	0	0	0	0	0	0	0

AIR CARRIER FATALITIES (FAR 121)

FY	OCT	NOV	DEC	JAN	FEB	MAR	APR	MAY	JUN	JUL	AUG	SEP	TOTAL
95	0	0	0	0	0	0	0	0	0	0	0	0	0
96	0	0	0	0	0	0	0	0	0	5	0	0	5
97	0	0	0	0	0	0	0	0	0	0	0	0	0
98	0	0	0	0	0	0	0	0	0	0	0	0	0
99	0	0	0	0	0	0	0	1	0	0	0	0	1
2000	0	0	0	0	0	0	0	0	0	0	0	0	0
2001	0	0	0	0	0	0	0	0	0	0	0	0	0
2002	0	0	0	0	0	0	0	0	0	0	0	0	0
2003	0	0	0	0	0	0	0	0	0	0	0	0	0
2004	0	0	0	0	0	0	0	0	0	0	0	0	0
2005	0	0	0	0	0	0	0	0	0	0	0		0
5 Yr. Ave.	0	0	0	0	0	0	0	0	0	0	0	0	0
MAX	0	0	0	0	0	0	0	0	0	0	0	0	0
MIN	0	0	0	0	0	0	0	0	0	0	0	0	0

TOTAL ACCIDENTS All Events

FY	OCT	NOV	DEC	JAN	FEB	MAR	APR	MAY	JUN	JUL	AUG	SEP	TOTAL
95	5	6	12	6	2	12	8	13	30	28	31	19	172
96	11	6	7	2	2	14	20	16	13	19	26	33	169
97	6	3	5	8	7	17	22	12	15	17	22	25	159
98	7	2	3	4	7	8	9	20	27	24	20	31	162
99	8	4	5	5	3	10	16	12	20	19	28	26	156
2000	8	4	6	1	8	7	12	11	19	12	17	22	127
2001	13	7	7	7	4	7	10	7	15	19	30	19	145
2002	6	0	1	2	7	10	3	9	27	17	28	16	126
2003	10	4	6	2	4	8	8	7	13	19	20	22	123
2004	4	7	4	3	3	5	8	11	12	14	14	18	103
2005	13	1	4	4	8	8	14	9	8	27	17		113
5 Yr. Ave.	9.2	3.8	4.4	3.6	5.2	7.6	8.6	8.6	15	19.2	21.8	19.4	124.8
MAX	13	7	7	7	8	10	14	11	27	27	30	22	145
MIN	4	0	1	2	3	5	3	7	8	14	14	16	103

AAI-240

System Safety Analysis Branch

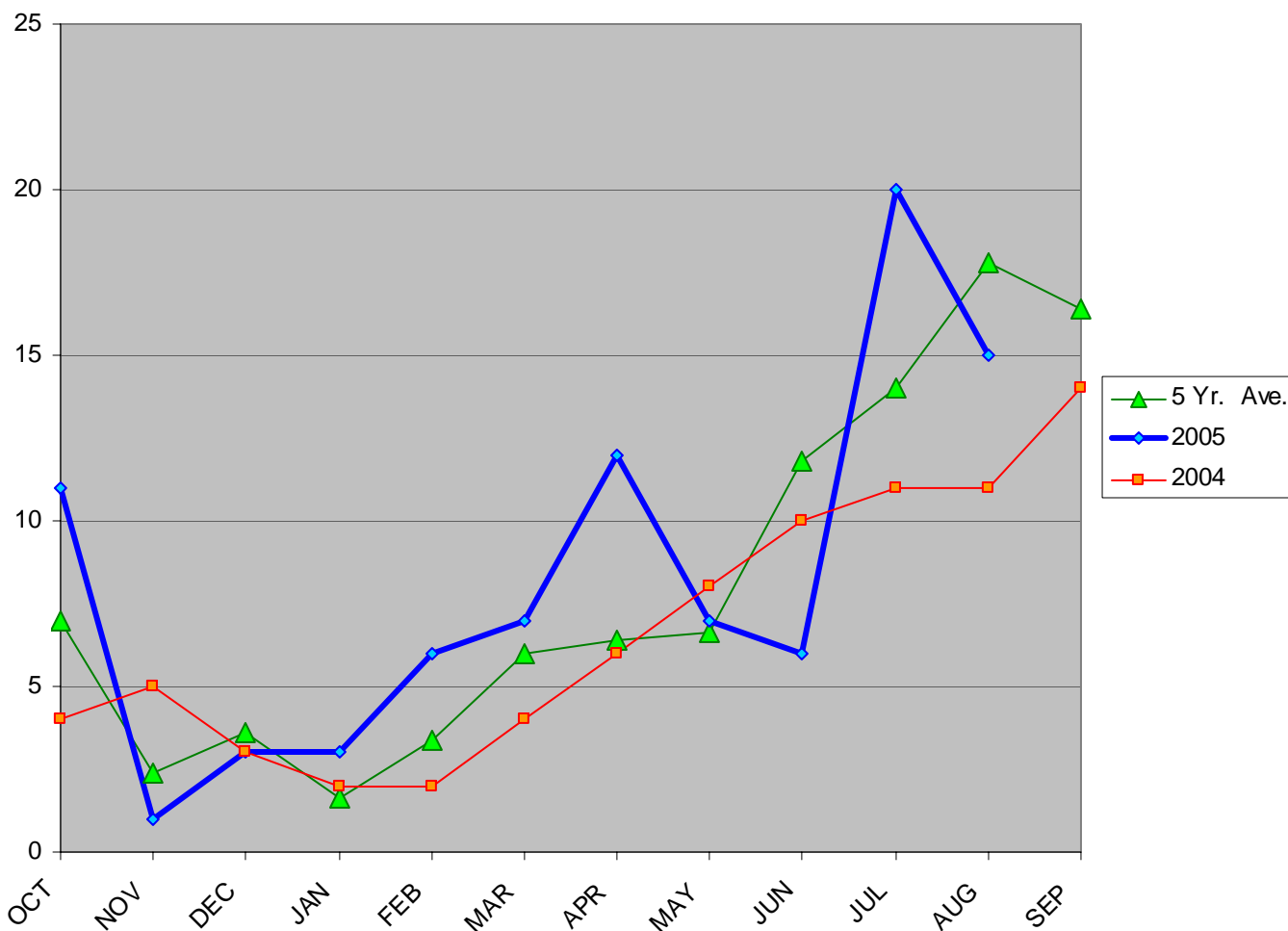
TOTAL FATAL ACCIDENTS All Events

FY	OCT	NOV	DEC	JAN	FEB	MAR	APR	MAY	JUN	JUL	AUG	SEP	TOTAL
95	0	1	2	0	1	0	1	2	4	5	5	2	23
96	0	0	0	0	0	0	1	1	1	5	4	5	17
97	2	2	1	1	2	3	4	0	2	2	2	3	24
98	2	1	0	0	1	0	1	3	1	3	2	3	17
99	0	0	0	0	0	0	1	3	3	0	5	1	13
2000	0	0	1	0	1	0	0	1	3	2	2	2	12
2001	1	0	2	1	0	0	0	0	0	3	2	0	9
2002	2	0	0	1	1	1	1	1	2	2	4	0	15
2003	0	0	1	0	0	0	0	1	2	3	3	1	11
2004	0	0	0	0	0	0	1	1	2	2	3	2	11
2005	1	0	0	0	1	0	1	0	0	3	1		7
5 Yr. Ave.	0.8	0	0.6	0.4	0.4	0.2	0.6	0.6	1.2	2.6	2.6	1	11.6
MAX	2	0	2	1	1	1	1	1	2	3	4	2	15
MIN	0	0	0	0	0	0	0	0	0	2	1	0	9

TOTAL FATALITIES (All Events)

FY	OCT	NOV	DEC	JAN	FEB	MAR	APR	MAY	JUN	JUL	AUG	SEP	TOTAL
95	0	1	6	0	1	0	2	3	18	15	8	3	57
96	0	0	0	0	0	0	1	2	1	9	6	11	30
97	4	3	1	1	4	6	11	0	6	8	4	4	52
98	3	8	0	0	1	0	1	6	1	5	2	7	34
99	0	0	0	0	0	0	1	4	9	0	11	1	26
2000	0	0	6	0	6	0	0	1	6	2	4	6	31
2001	1	0	6	2	0	0	0	0	0	11	2	0	22
2002	13	0	0	1	1	1	1	2	2	6	7	0	34
2003	0	0	1	0	0	0	0	4	5	10	7	3	30
2004	0	0	0	0	0	0	1	1	2	8	4	7	23
2005	1	0	0	0	3	0	1	0	0	6	2		13
5 Yr. Ave.	3	0	1.4	0.6	0.8	0.2	0.6	1.4	1.8	8.2	4.4	3.2	28
MAX	13	0	6	2	3	1	1	4	5	11	7	7	34
MIN	0	0	0	0	0	0	0	0	0	6	2	0	22

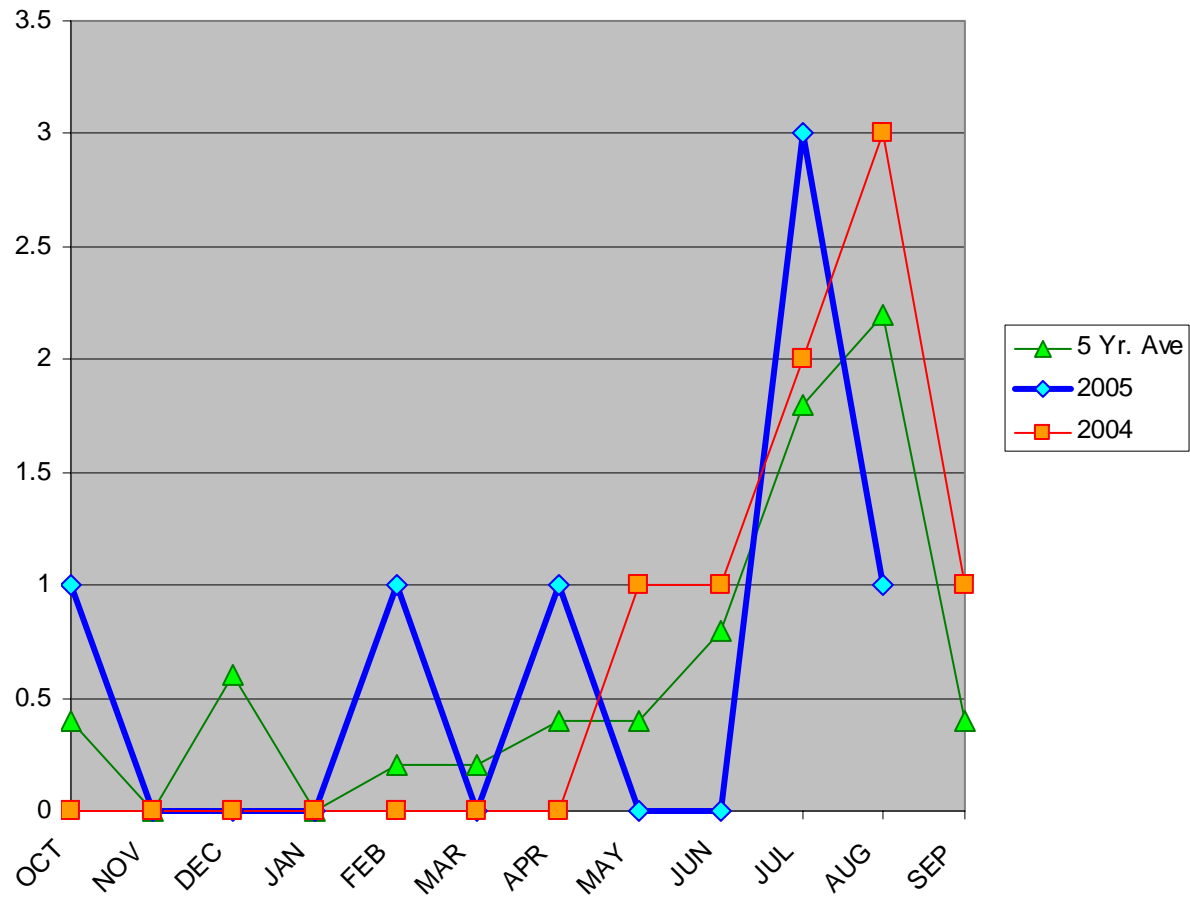
General Aviation Accidents in Alaska



AAL-240

System Safety Analysis Branch

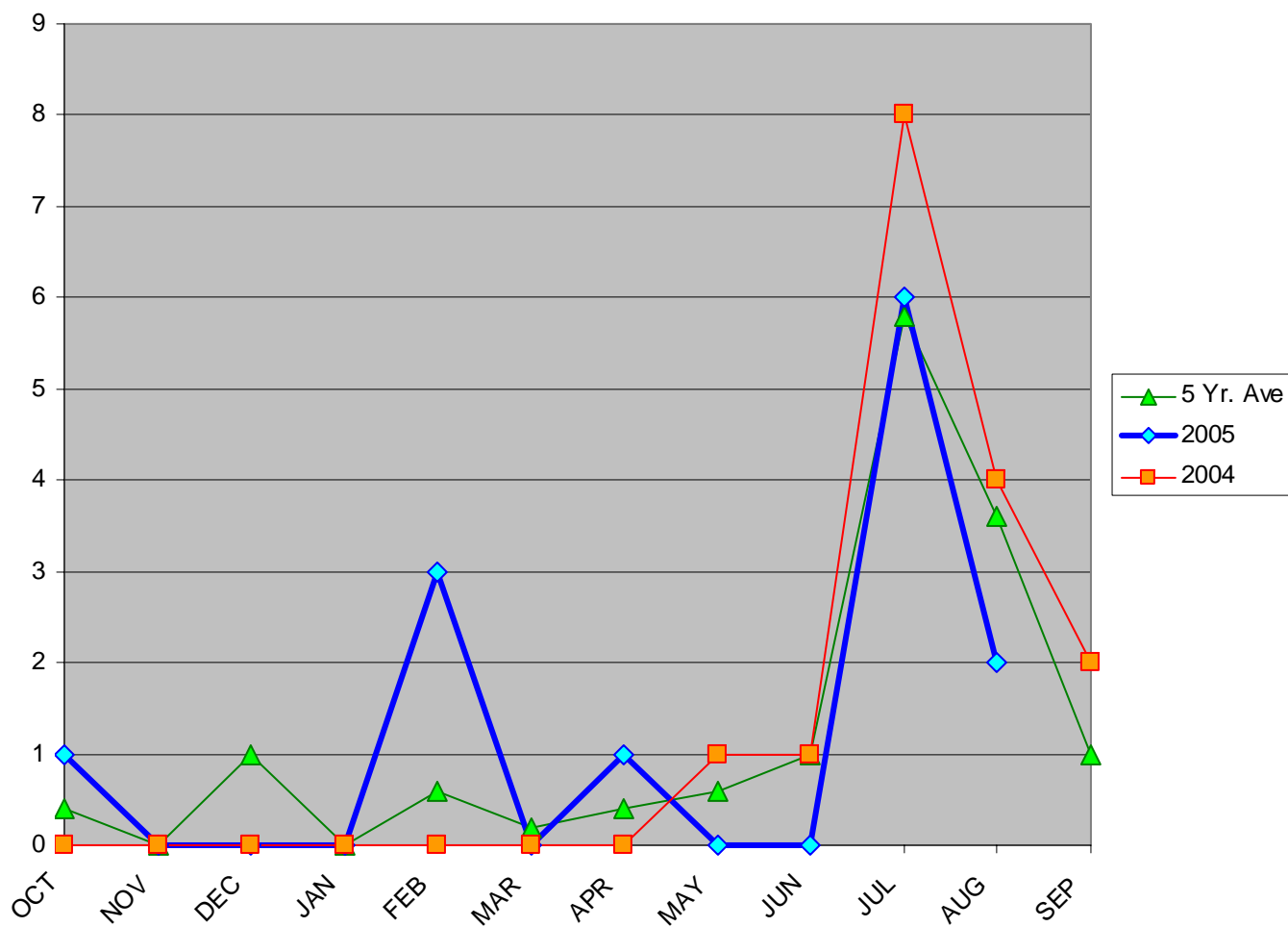
General Aviation Fatal Accidents in Alaska



AAL-240

System Safety Analysis Branch

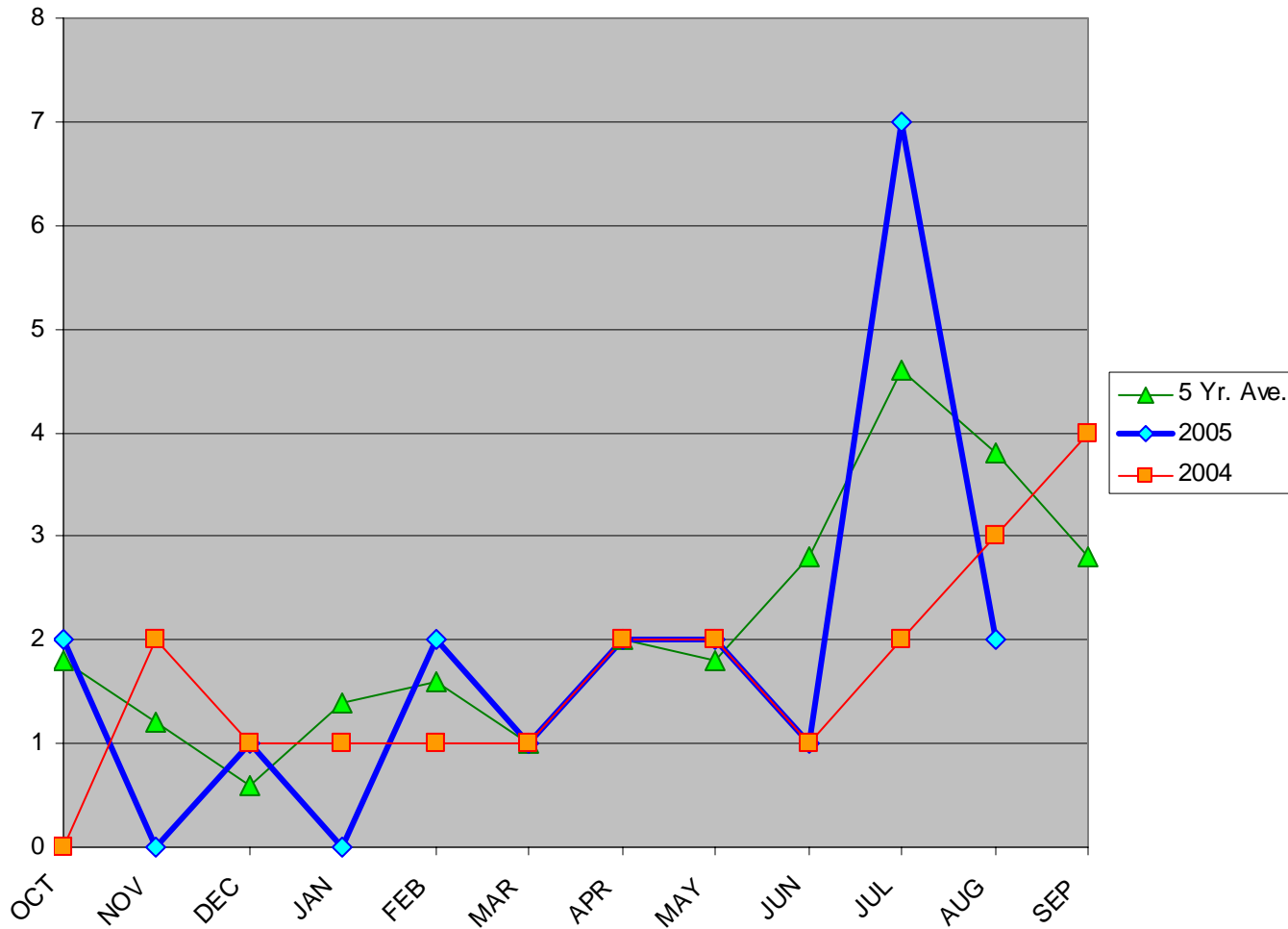
General Aviation Fatalities in Alaska



AAL-240

System Safety Analysis Branch

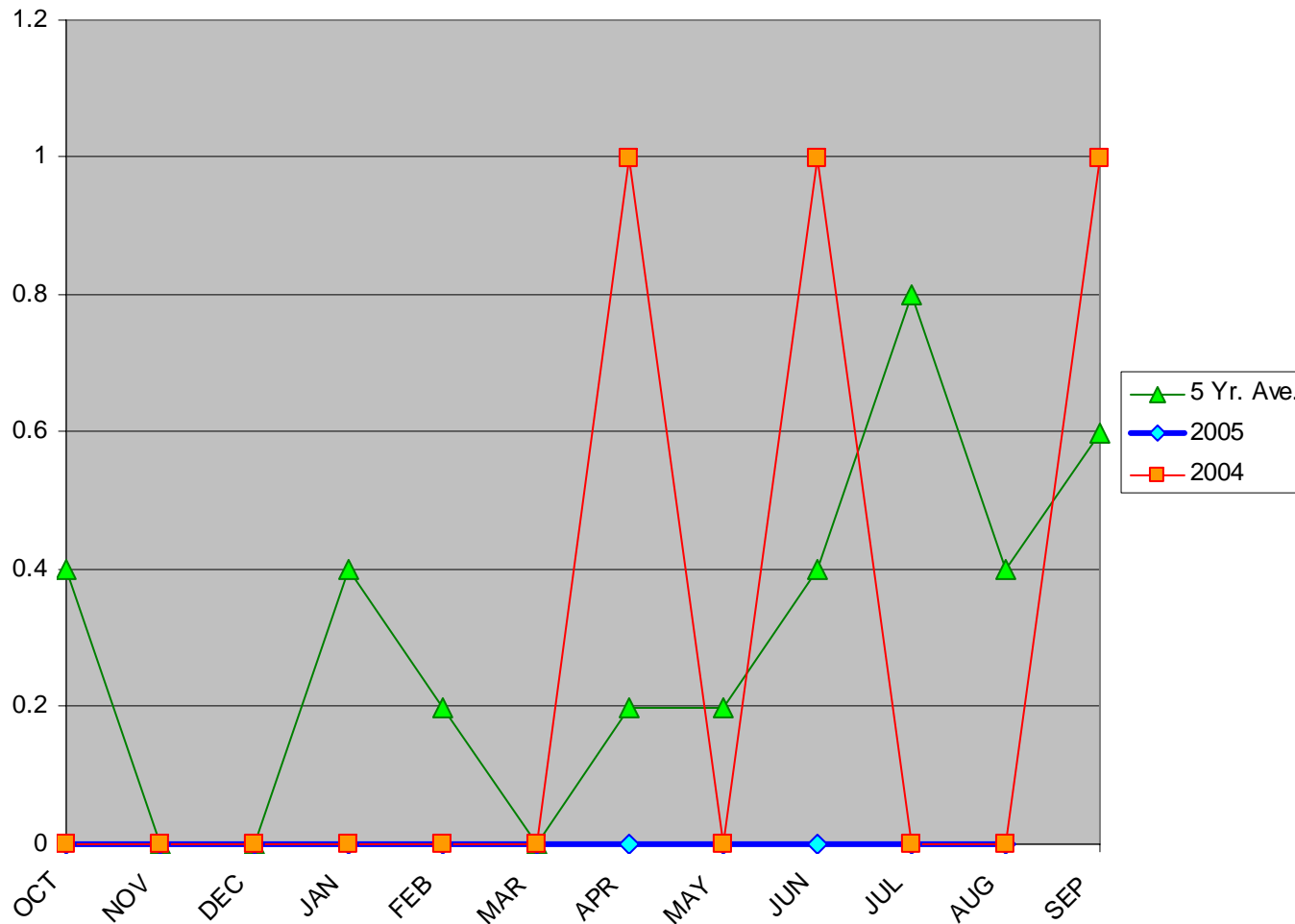
Air Carrier (Part 135) Accidents in Alaska



AAL-240

System Safety Analysis Branch

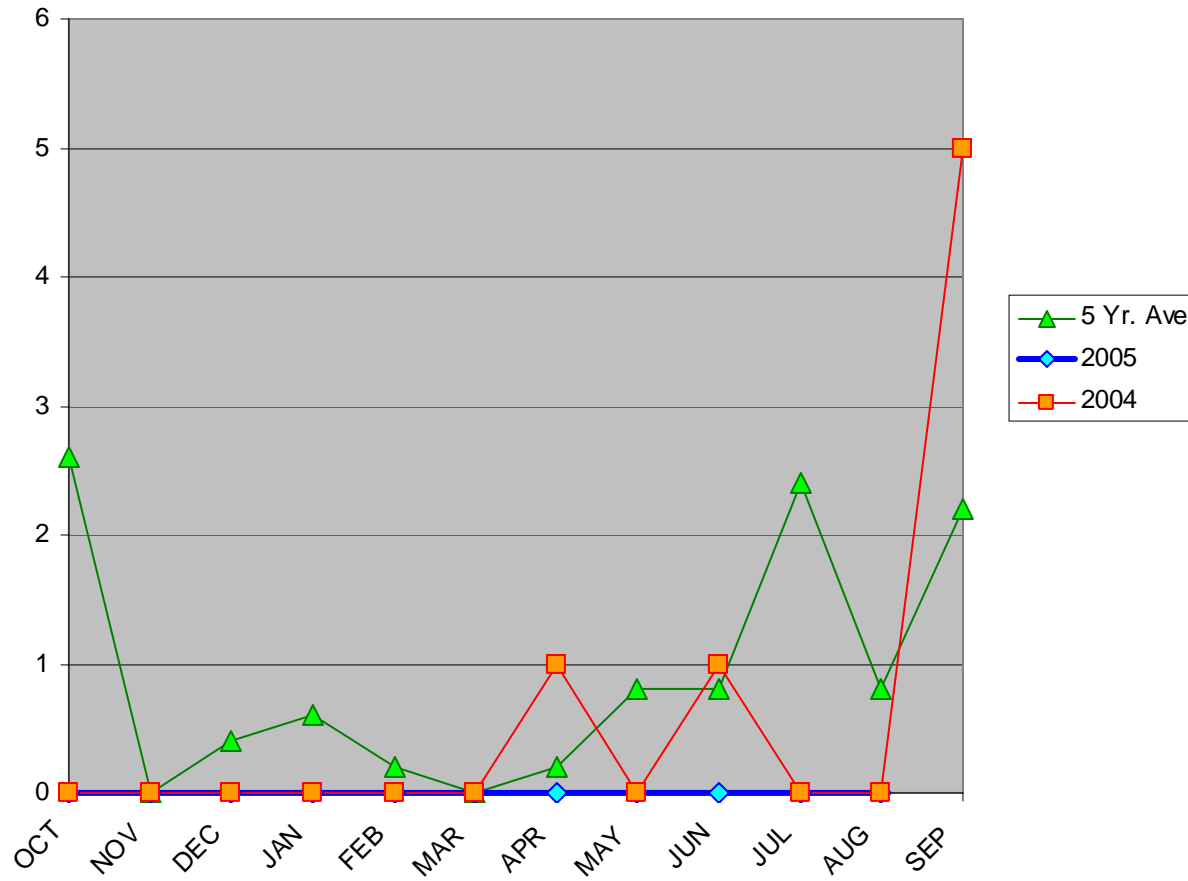
Air Carrier (FAR 135) Fatal Accidents in Alaska



AAL-240

System Safety Analysis Branch

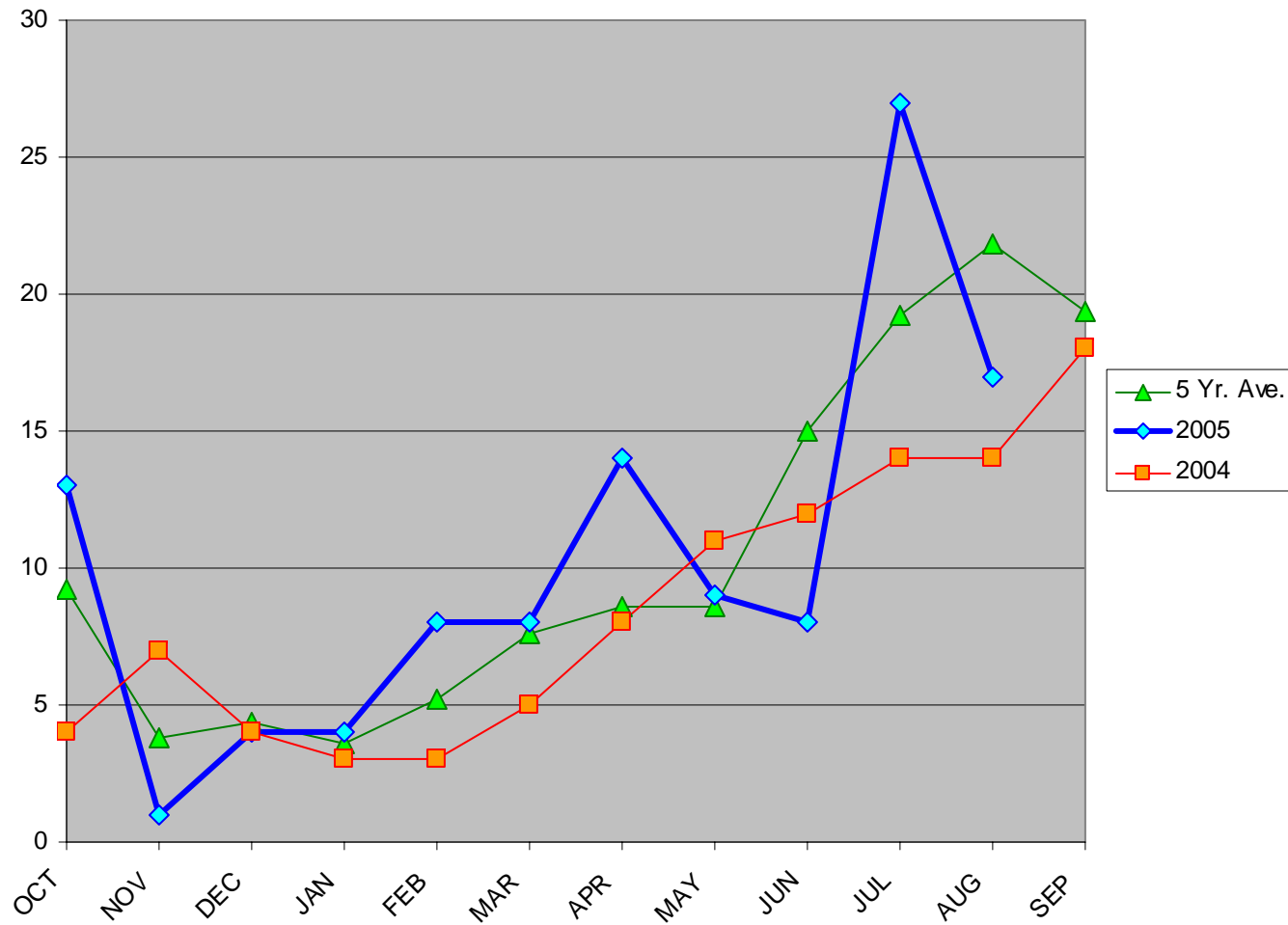
Air Carrier (FAR 135) Fatalities in Alaska



AAL-240

System Safety Analysis Branch

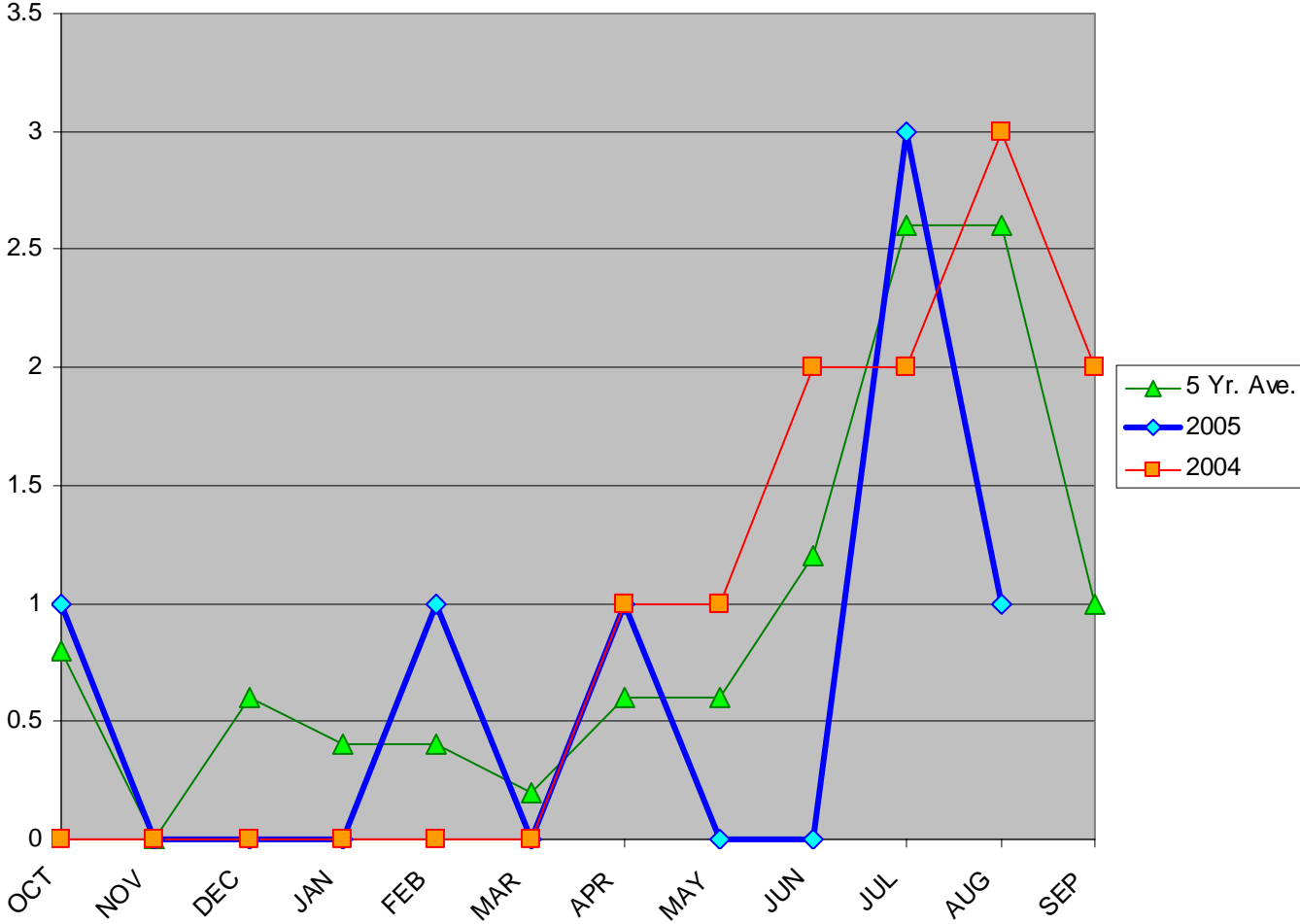
Total Accidents in Alaska



AAL-240

System Safety Analysis Branch

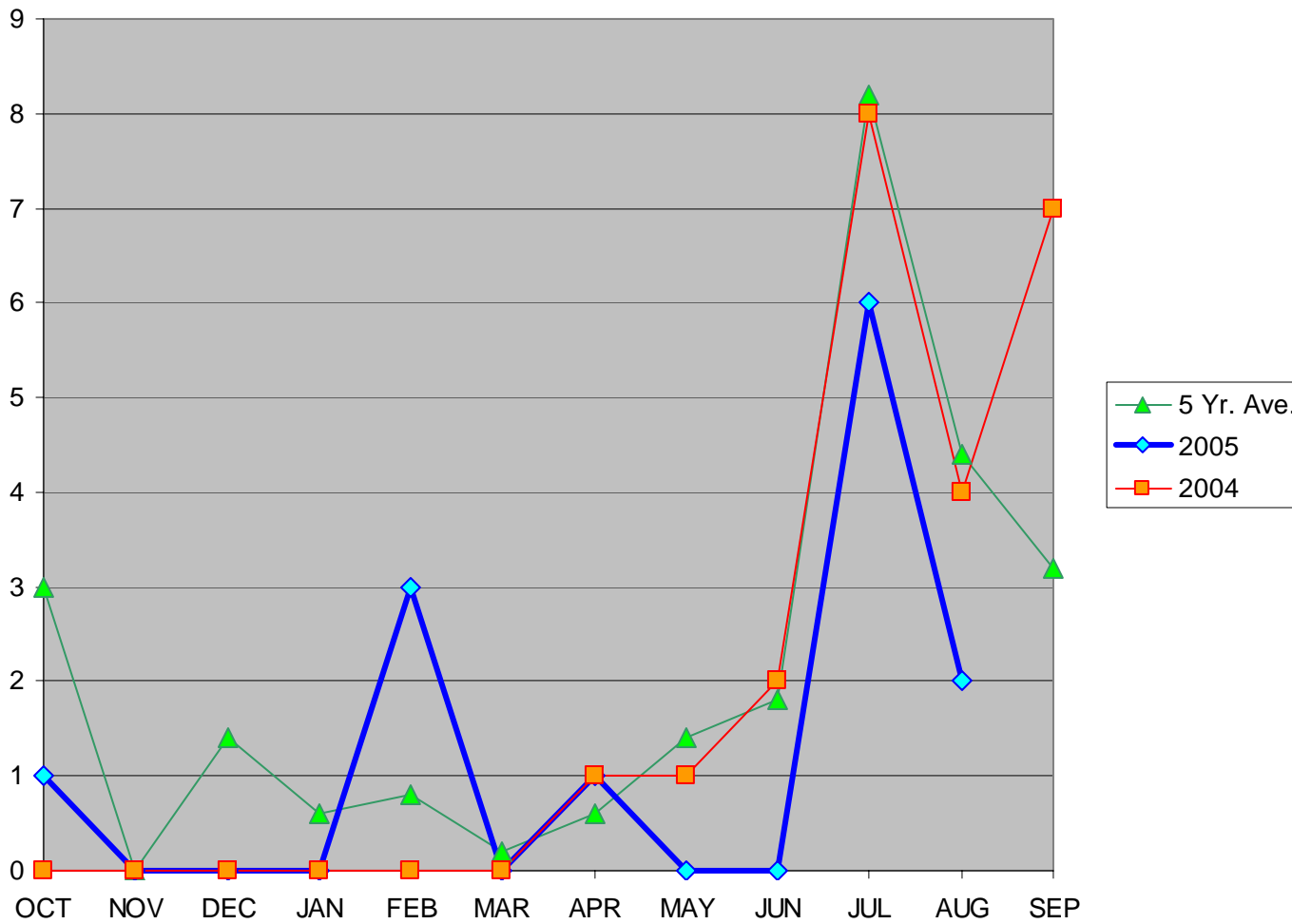
Total Fatal Accidents in Alaska



AAL-240

System Safety Analysis Branch

Total Fatalities in Alaska



AAAL-240

System Safety Analysis Branch