



Alaska Accident Statistics

August 2004

AAL-240

System Safety Analysis Branch

**FAA ALASKAN REGION
MONTHLY AIRCRAFT ACCIDENT SUMMARY**

August 2004

Accident Comparison for the month of August

August 5-YEAR

	2004	2003	High	Low	Average
General Aviation (FAR Parts 91,133,137,125,129 & Public Use)	11	17	26	11	17.6
Fatal Accidents	3	2	3	2	2.4
Fatalities	4	5	5	2	4
Air Carrier (FAR Part 135)	3	3	8	3	4
Fatal Accidents	0	1	1	0	0.4
Fatalities	0	2	2	0	0.8
Air Carrier (FAR Part 121)	0	0	1	0	0.2
Fatal Accidents	0	0	0	0	0
Fatalities	0	0	0	0	0
Total Accidents	14	20	30	14	21.8
Fatal	3	3	4	2	2.8
Fatalities	4	7	7	2	4.8

This document is for comparison only. Totals frequently change due to reclassification.

AAL-240

System Safety Analysis Branch

SUMMARY

August 2004

For the month of August, there were 11 General Aviation (GA) accidents, compared with 17 in August 2003. The 5-year average for GA accidents during the month of August is 17.6 events. There were three fatal GA accidents in August 2004, resulting in four fatalities. There were two fatal GA accidents in August 2003 resulting in five fatalities.

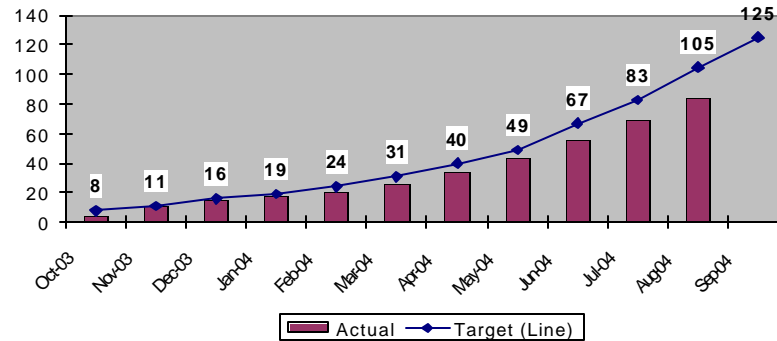
For the month of August, there were three FAR Part 135 Air Carrier accidents, compared with three in August of 2003. The 5-year average for FAR Part 135 Air Carrier accidents during the month of August is four events. There were no fatal FAR Part 135 Air Carrier accidents for the month of August in 2004. There was one fatal FAR Part 135 Air Carrier accident in August 2003, resulting in two fatalities.

There were no FAR Part 121 events for the month of August in 2004 or 2003.

There were a total of 14 aircraft accidents during August 2004. This is compared with 20 in August 2003. The 5-year average for accidents during the month of August is 21.8 events. There were three fatal accidents for the month of August 2004, resulting in four fatalities. There were three fatal events in August 2003 resulting in seven fatalities.

Note: Statistics contained in this report June differ from past reports produced by the System Safety Analysis Branch. This is caused by frequent reclassifications of events by the National Transportation Safety Board.

**Status of FAA Performance Targets
Alaska GA & 135 Accidents
Fiscal Year to Date
Cummulative Total**



Description

Reduce accidents in Alaska for General Aviation and all Part 135 operations by 20% by Fiscal Year (FY) 2008 (from the 2000-2002 average of 130 accidents per year to no more than 104 accidents per year). (FY2004 target is no more than 125 accidents)

This chart indicates the monthly total of Alaskan accidents. The graph shows the cumulative number of Alaskan accidents versus the target.

	Actual	Target (Line)	Index Range
Oct-03	4	8	Green
Nov-03	11	11	Yellow
Dec-03	15	16	Green
Jan-04	18	19	Green
Feb-04	21	24	Green
Mar-04	26	31	Green
Apr-04	34	40	Green
May-04	44	49	Green
Jun-04	56	67	Green
Jul-04	70	83	Green
Aug-04	84	105	Green
Sep-04		125	

GENERAL AVIATION TOTAL

Year	JAN	FEB	MAR	APR	MAY	JUN	JUL	AUG	SEP	OCT	NOV	DEC	TOTAL
94	3	5	4	3	8	10	13	23	15	4	2	7	97
95	4	0	8	8	9	26	23	28	17	11	4	4	142
96	2	0	11	18	12	11	13	19	26	5	1	1	119
97	6	5	15	15	11	13	10	16	18	4	0	2	115
98	2	3	8	6	14	21	22	16	23	4	2	2	123
99	2	2	8	9	10	15	17	23	21	2	3	2	114
2000	0	4	3	11	9	17	11	14	18	9	3	6	105
2001	2	4	7	7	5	14	12	26	17	3	0	0	97
2002	1	2	5	2	8	19	12	20	13	8	3	6	99
2003	0	3	7	5	5	10	15	17	20	4	5	3	94
2004	2	2	4	6	8	11	12	11					56
5 Yr. Ave.	1	3	5.2	6.2	7	14.2	12.4	17.6	17.8	5.2	2.8	3.4	101.8
MAX	2	4	7	11	9	19	15	26	21	9	5	6	114
MIN	0	2	3	2	5	10	11	11	13	2	0	0	94

AAL-240

System Safety Analysis Branch

GENERAL AVIATION FATAL ACCIDENTS

Year	JAN	FEB	MAR	APR	MAY	JUN	JUL	AUG	SEP	OCT	NOV	DEC	TOTAL
94	1	1	0	0	0	1	0	3	2	0	0	0	8
95	0	0	0	1	2	3	4	4	2	0	0	0	16
96	0	0	0	1	1	1	2	3	4	1	0	0	13
97	0	2	3	3	0	1	0	1	2	1	0	0	13
98	0	0	0	1	2	1	3	1	1	0	0	0	9
99	0	0	0	0	2	1	0	5	0	0	0	0	8
2000	0	0	0	0	1	2	2	2	0	1	0	2	10
2001	0	0	0	0	0	0	1	2	0	0	0	0	3
2002	0	0	1	1	1	2	1	3	0	0	0	1	10
2003	0	0	0	0	0	1	2	2	1	0	0	0	6
2004	0	0	0	0	1	1	2	3					7
5 Yr. Ave	0	0	0.2	0.2	0.6	1.2	1.6	2.4	0.2	0.2	0	0.6	7.4
MAX	0	0	1	1	1	2	2	3	1	1	0	2	10
MIN	0	0	0	0	0	0	1	2	0	0	0	0	3

AAL-240

System Safety Analysis Branch

GENERAL AVIATION FATALITIES

Year	JAN	FEB	MAR	APR	MAY	JUN	JUL	AUG	SEP	OCT	NOV	DEC	TOTAL
94	1	1	0	0	0	3	0	6	3	0	0	0	14
95	0	0	0	2	3	14	9	6	3	0	0	0	37
96	0	0	0	1	2	1	3	4	8	1	0	0	20
97	0	4	6	6	0	4	0	3	3	1	0	0	27
98	0	0	0	1	4	1	5	1	1	0	0	0	13
99	0	0	0	0	3	1	0	11	0	0	0	0	15
2000	0	0	0	0	1	2	2	4	0	1	0	4	14
2001	0	0	0	0	0	0	4	2	0	0	0	0	6
2002	0	0	1	1	2	2	2	5	0	0	0	1	14
2003	0	0	0	0	0	2	9	5	3	0	0	0	19
2004	0	0	0	0	1	1	8	4					14
5 Yr. Ave	0	0	0.2	0.2	0.8	1.4	5	4	0.6	0.2	0	1	13.6
MAX	0	0	1	1	2	2	9	5	3	1	0	4	19
MIN	0	0	0	0	0	0	2	2	0	0	0	0	6

AAL-240

System Safety Analysis Branch

AIR CARRIER TOTAL (FAR 135)

Year	JAN	FEB	MAR	APR	MAY	JUN	JUL	AUG	SEP	OCT	NOV	DEC	TOTAL
94	0	1	1	2	1	2	8	8	3	1	3	4	34
95	2	2	4	0	4	3	4	3	2	0	2	3	29
96	0	0	3	2	3	2	4	7	7	1	2	3	34
97	2	2	2	6	1	2	7	5	7	2	2	1	39
98	1	4	0	3	6	5	2	3	8	4	0	3	39
99	3	1	2	7	0	5	1	3	5	6	1	4	38
2000	1	4	4	1	2	2	1	3	4	2	3	1	28
2001	4	0	0	3	2	1	6	3	1	3	0	0	23
2002	1	4	3	1	1	8	4	8	3	2	1	0	36
2003	1	1	0	2	2	3	4	3	2	0	2	1	21
2004	1	1	1	2	2	1	2	3					13
5 Yr. Ave.	1.6	2	1.6	1.8	1.8	3	3.4	4	3	2.6	1.4	1.2	29.2
MAX	4	4	4	3	2	8	6	8	5	6	3	4	38
MIN	1	0	0	1	1	1	1	3	1	0	0	0	21

AAL-240

System Safety Analysis Branch

AIR CARRIER FATAL ACCIDENTS (FAR 135)

Year	JAN	FEB	MAR	APR	MAY	JUN	JUL	AUG	SEP	OCT	NOV	DEC	TOTAL
94	0	0	0	0	0	1	1	3	0	0	1	2	8
95	0	1	0	0	0	1	1	1	0	0	0	0	4
96	0	0	0	0	0	0	1	1	1	1	2	1	7
97	1	0	0	1	0	1	2	1	1	1	1	0	9
98	0	1	0	0	1	0	0	1	2	0	0	0	5
99	0	0	0	1	0	2	0	0	1	0	0	1	5
2000	0	1	0	0	0	1	0	0	2	0	0	0	4
2001	1	0	0	0	0	0	2	0	0	2	0	0	5
2002	1	1	0	0	0	0	1	1	0	0	0	0	4
2003	0	0	0	0	1	1	1	1	0	0	0	0	4
2004	0	0	0	1	0	1	0	0					2
5 Yr. Ave.	0.4	0.4	0	0.2	0.2	0.6	0.8	0.4	0.6	0.4	0	0.2	4.4
MAX	1	1	0	1	1	1	2	1	2	2	0	1	5
MIN	0	0	0	0	0	0	0	0	0	0	0	0	4

AAL-240

System Safety Analysis Branch

AIR CARRIER FATALITIES (FAR 135)

Year	JAN	FEB	MAR	APR	MAY	JUN	JUL	AUG	SEP	OCT	NOV	DEC	TOTAL
94	0	0	0	0	0	7	3	12	0	0	1	6	29
95	0	1	0	0	0	4	6	2	0	0	0	0	13
96	0	0	0	0	0	0	1	2	3	3	3	1	13
97	1	0	0	5	0	2	8	1	1	2	8	0	28
98	0	1	0	0	2	0	0	1	6	0	0	0	10
99	0	0	0	1	0	8	0	0	1	0	0	6	16
2000	0	6	0	0	0	4	0	0	6	0	0	2	18
2001	2	0	0	0	0	0	7	0	0	13	0	0	22
2002	1	1	0	0	0	0	4	2	0	0	0	0	8
2003	0	0	0	0	4	3	1	2	0	0	0	0	10
2004	0	0	0	1	0	1	0	0					2
5 Yr. Ave.	0.6	1.4	0	0.2	0.8	1.6	2.4	0.8	1.4	2.6	0	1.6	14.8
MAX	2	6	0	1	4	4	7	2	6	13	0	6	22
MIN	0	0	0	0	0	0	0	0	0	0	0	0	8

AAL-240

System Safety Analysis Branch

SUBTOTAL AK GOAL ACCIDENTS (GA & FAR 135)

Year	JAN	FEB	MAR	APR	MAY	JUN	JUL	AUG	SEP	OCT	NOV	DEC	TOTAL
94	3	6	5	5	9	12	20	33	17	5	5	11	131
95	6	2	12	8	13	29	27	30	19	11	6	7	171
96	2	0	14	20	15	12	18	24	33	6	3	4	153
97	8	7	16	20	12	15	18	24	33	7	2	3	154
98	4	7	8	10	19	26	24	21	32	8	2	5	162
99	5	3	10	16	11	20	17	26	26	8	4	6	152
2000	1	8	7	12	11	18	12	17	22	12	6	6	133
2001	7	4	7	10	7	17	19	30	18	7	0	0	120
2002	2	6	8	3	11	27	16	24	16	9	4	7	135
2003	1	4	8	7	7	13	20	20	22	4	7	4	115
2004	3	3	5	8	10	12	14	14					69
5 Yr. Ave.	2.8	5	7	8	9.2	17.4	16.2	21	20.8	8	4.2	4.6	131
MAX	7	8	8	12	11	27	20	30	26	12	7	7	152
MIN	1	3	5	3	7	12	12	14	16	4	0	0	115

AAL-240

System Safety Analysis Branch

SUBTOTAL AK GOAL FATAL ACCIDENTS(GA & FAR 135)

Year	JAN	FEB	MAR	APR	MAY	JUN	JUL	AUG	SEP	OCT	NOV	DEC	TOTAL
94	1	1	0	0	0	2	1	6	2	0	1	2	16
95	0	1	0	1	2	4	5	5	2	0	0	0	20
96	0	0	0	1	1	1	3	4	5	2	2	1	20
97	1	2	3	4	0	2	2	2	3	2	1	0	22
98	0	1	0	1	3	1	3	2	3	0	0	0	14
99	0	0	0	1	2	3	0	5	1	0	0	1	13
2000	0	1	0	0	1	3	2	2	2	1	0	2	14
2001	1	0	0	0	0	0	3	2	0	2	0	0	8
2002	1	1	1	1	1	2	2	4	0	0	0	1	14
2003	0	0	0	0	1	2	3	3	1	0	0	0	10
2004	0	0	0	1	1	2	2	3					9
5 Yr. Ave.	0.4	0.4	0.2	0.4	0.8	1.8	2.4	2.8	0.8	0.6	0	0.8	11.8
MAX	1	1	1	1	1	3	3	4	2	2	0	2	14
MIN	0	0	0	0	0	0	2	2	0	0	0	0	8

AAL-240

System Safety Analysis Branch

SUBTOTAL AK Goal FATALITIES (GA & FAR 135)

Year	JAN	FEB	MAR	APR	MAY	JUN	JUL	AUG	SEP	OCT	NOV	DEC	TOTAL
94	1	1	0	0	0	10	3	18	3	0	1	6	43
95	0	1	0	2	3	18	15	8	3	0	0	0	50
96	0	0	0	1	2	1	4	6	11	4	3	1	33
97	1	4	6	11	0	6	8	4	4	3	8	0	55
98	0	1	0	1	6	1	5	2	7	0	0	0	23
99	0	0	0	1	3	9	0	11	1	0	0	6	31
2000	0	6	0	0	1	6	2	4	6	1	0	6	32
2001	2	0	0	0	0	0	11	2	0	13	0	0	28
2002	1	1	1	1	2	2	6	7	0	0	0	1	22
2003	0	0	0	0	4	5	10	7	3	0	0	0	29
2004	0	0	0	1	1	2	8	4					16
5 Yr. Ave.	0.6	1.4	0.2	0.4	1.6	3	7.4	4.8	2	2.8	0	2.6	28.4
MAX	2	6	1	1	4	6	11	7	6	13	0	6	32
MIN	0	0	0	0	0	0	2	2	0	0	0	0	22

AAL-240

System Safety Analysis Branch

AIR CARRIER TOTAL (FAR 121)

Year	JAN	FEB	MAR	APR	MAY	JUN	JUL	AUG	SEP	OCT	NOV	DEC	TOTAL
94	0	0	0	0	0	0	0	0	0	0	1	1	2
95	0	0	0	0	0	1	1	0	0	0	0	0	2
96	0	2	0	0	1	0	2	0	0	0	0	1	6
97	0	0	0	1	0	0	0	1	0	1	0	0	3
98	1	0	0	0	0	1	0	1	0	0	2	0	5
99	0	0	0	0	2	0	1	2	0	0	0	0	5
2000	0	0	0	0	0	0	0	0	0	2	1	0	3
2001	1	0	0	0	0	0	1	1	1	0	0	1	5
2002	0	1	2	0	0	0	1	0	0	0	0	0	4
2003	1	0	1	1	0	0	0	0	0	0	0	0	3
2004	0	0	0	0	1	0	0	0					1
5 Yr. Ave.	0.4	0.2	0.6	0.2	0.2	0	0.4	0.2	0.2	0.4	0.2	0.2	4
MAX	1	1	2	1	1	0	1	1	1	2	1	1	5
MIN	0	0	0	0	0	0	0	0	0	0	0	0	3

AAL-240

System Safety Analysis Branch

AIR CARRIER FATAL ACCIDENTS (FAR 121)

Year	JAN	FEB	MAR	APR	MAY	JUN	JUL	AUG	SEP	OCT	NOV	DEC	TOTAL
94	0	0	0	0	0	0	0	0	0	0	0	0	0
95	0	0	0	0	0	0	0	0	0	0	0	0	0
96	0	0	0	0	0	0	2	0	0	0	0	0	2
97	0	0	0	0	0	0	0	0	0	0	0	0	0
98	0	0	0	0	0	0	0	0	0	0	0	0	0
99	0	0	0	0	1	0	0	0	0	0	0	0	1
2000	0	0	0	0	0	0	0	0	0	0	0	0	0
2001	0	0	0	0	0	0	0	0	0	0	0	0	0
2002	0	0	0	0	0	0	0	0	0	0	0	0	0
2003	0	0	0	0	0	0	0	0	0	0	0	0	0
2004	0	0	0	0	0	0	0	0	0	0	0	0	0
5 Yr. Ave.	0	0	0	0	0	0	0	0	0	0	0	0	0.2
MAX	0	0	0	0	0	0	0	0	0	0	0	0	1
MIN	0	0	0	0	0	0	0	0	0	0	0	0	0

AAL-240

System Safety Analysis Branch

AIR CARRIER FATALITIES (FAR 121)

Year	JAN	FEB	MAR	APR	MAY	JUN	JUL	AUG	SEP	OCT	NOV	DEC	TOTAL
94	0	0	0	0	0	0	0	0	0	0	0	0	0
95	0	0	0	0	0	0	0	0	0	0	0	0	0
96	0	0	0	0	0	0	5	0	0	0	0	0	5
97	0	0	0	0	0	0	0	0	0	0	0	0	0
98	0	0	0	0	0	0	0	0	0	0	0	0	0
99	0	0	0	0	1	0	0	0	0	0	0	0	1
2000	0	0	0	0	0	0	0	0	0	0	0	0	0
2001	0	0	0	0	0	0	0	0	0	0	0	0	0
2002	0	0	0	0	0	0	0	0	0	0	0	0	0
2003	0	0	0	0	0	0	0	0	0	0	0	0	0
2004	0	0	0	0	0	0	0	0	0	0	0	0	0
5 Yr. Ave.	0	0	0	0	0	0	0	0	0	0	0	0	0.2
MAX	0	0	0	0	0	0	0	0	0	0	0	0	1
MIN	0	0	0	0	0	0	0	0	0	0	0	0	0

AAL-240

System Safety Analysis Branch

TOTAL ACCIDENTS All Events

Year	JAN	FEB	MAR	APR	MAY	JUN	JUL	AUG	SEP	OCT	NOV	DEC	TOTAL
94	3	6	5	5	9	12	21	31	18	5	6	12	133
95	6	2	12	8	13	30	28	31	19	11	6	7	173
96	2	2	14	20	16	13	19	26	33	6	3	5	159
97	8	7	17	22	12	15	17	22	25	7	2	3	157
98	4	7	8	9	20	27	24	20	31	8	4	5	167
99	5	3	10	16	12	20	19	28	26	8	4	6	157
2000	1	8	7	12	11	19	12	17	22	13	7	7	136
2001	7	4	7	10	7	15	19	30	19	6	0	1	125
2002	2	7	10	3	9	27	17	28	16	10	4	6	139
2003	2	4	8	8	7	13	19	20	22	4	7	4	118
2004	3	3	5	8	11	12	14	14					70
5 Yr. Ave.	3	5.2	7.4	8.2	9	17.2	16.2	21.8	21	8.2	4.4	4.8	135
MAX	7	8	10	12	11	27	19	30	26	13	7	7	157
MIN	1	3	5	3	7	12	12	14	16	4	0	1	118

AAL-240

System Safety Analysis Branch

TOTAL FATAL ACCIDENTS All Events

Year	JAN	FEB	MAR	APR	MAY	JUN	JUL	AUG	SEP	OCT	NOV	DEC	TOTAL
94	1	1	0	0	0	2	1	6	2	0	1	2	16
95	0	1	0	1	2	4	5	5	2	0	0	0	20
96	0	0	0	1	1	1	5	4	5	2	2	1	22
97	1	2	3	4	0	2	2	2	3	2	1	0	22
98	0	1	0	1	3	1	3	2	3	0	0	0	14
99	0	0	0	1	3	3	0	5	1	0	0	1	14
2000	0	1	0	0	1	3	2	2	2	1	0	2	14
2001	1	0	0	0	0	0	3	2	0	2	0	0	8
2002	1	1	1	1	1	2	2	4	0	0	0	1	14
2003	0	0	0	0	1	2	3	3	1	0	0	0	10
2004	0	0	0	1	1	2	2	3					9
5 Yr. Ave.	0.4	0.4	0.2	0.4	0.8	1.8	2.4	2.8	0.8	0.6	0	0.8	12
MAX	1	1	1	1	1	3	3	4	2	2	0	2	14
MIN	0	0	0	0	0	0	2	2	0	0	0	0	8

AAL-240

System Safety Analysis Branch

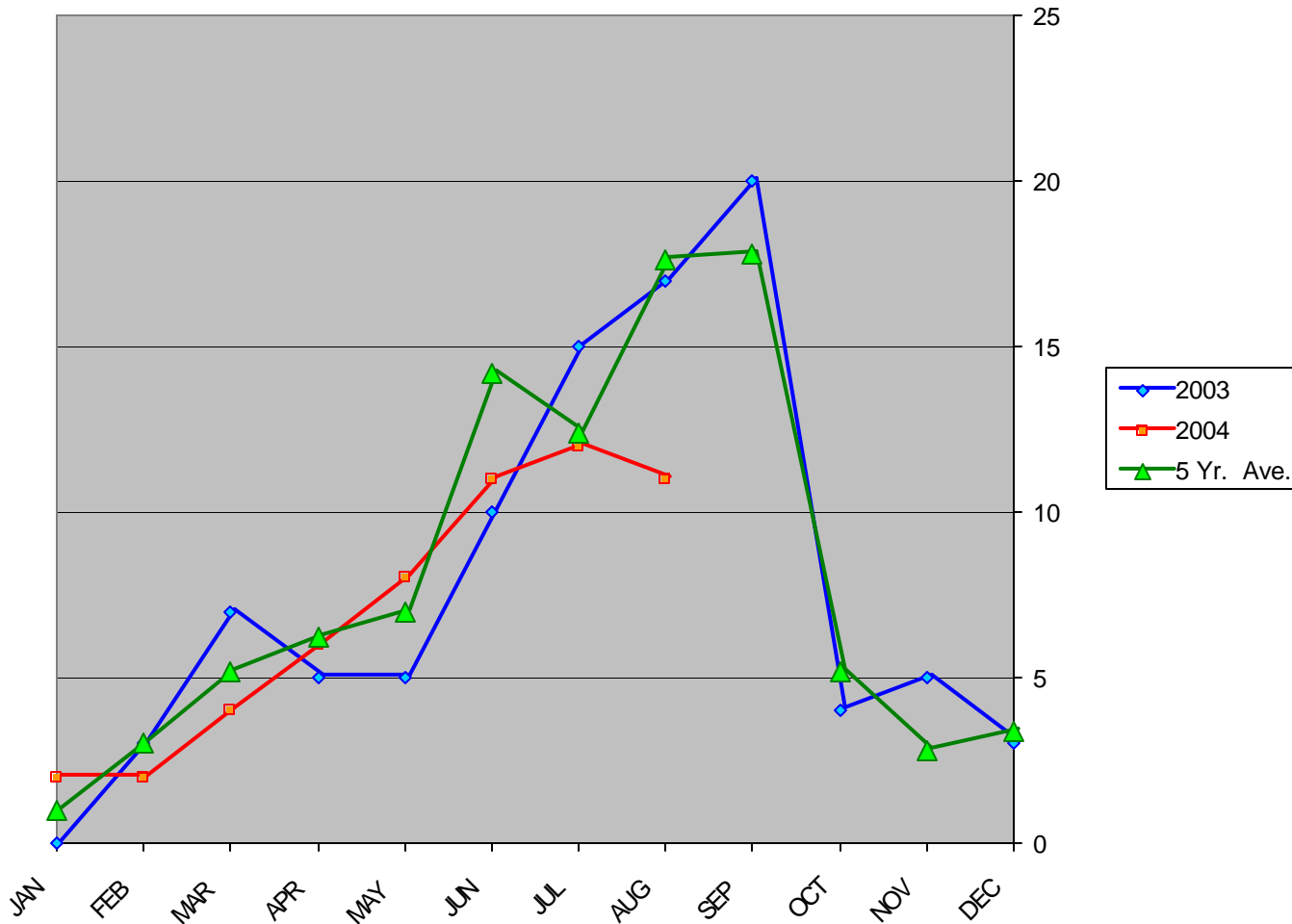
TOTAL FATALITIES (All Events)

Year	JAN	FEB	MAR	APR	MAY	JUN	JUL	AUG	SEP	OCT	NOV	DEC	TOTAL
94	1	1	0	0	0	10	3	18	3	0	1	6	43
95	0	1	0	2	3	18	15	8	3	0	0	0	50
96	0	0	0	1	2	1	9	6	11	4	3	1	38
97	1	4	6	11	0	6	8	4	4	3	8	0	55
98	0	1	0	1	6	1	5	2	7	0	0	0	23
99	0	0	0	1	4	9	0	11	1	0	0	6	32
2000	0	6	0	0	1	6	2	4	6	1	0	6	32
2001	2	0	0	0	0	0	11	2	0	13	0	0	28
2002	1	1	1	1	2	2	6	7	0	0	0	1	22
2003	0	0	0	0	4	5	10	7	3	0	0	0	29
2004	0	0	0	1	1	2	8	4					16
5 Yr. Ave.	0.6	1.4	0.2	0.4	1.6	3	7.4	4.8	2	2.8	0	2.6	28.6
MAX	2	6	1	1	4	6	11	7	6	13	0	6	32
MIN	0	0	0	0	0	0	2	2	0	0	0	0	22

AAL-240

System Safety Analysis Branch

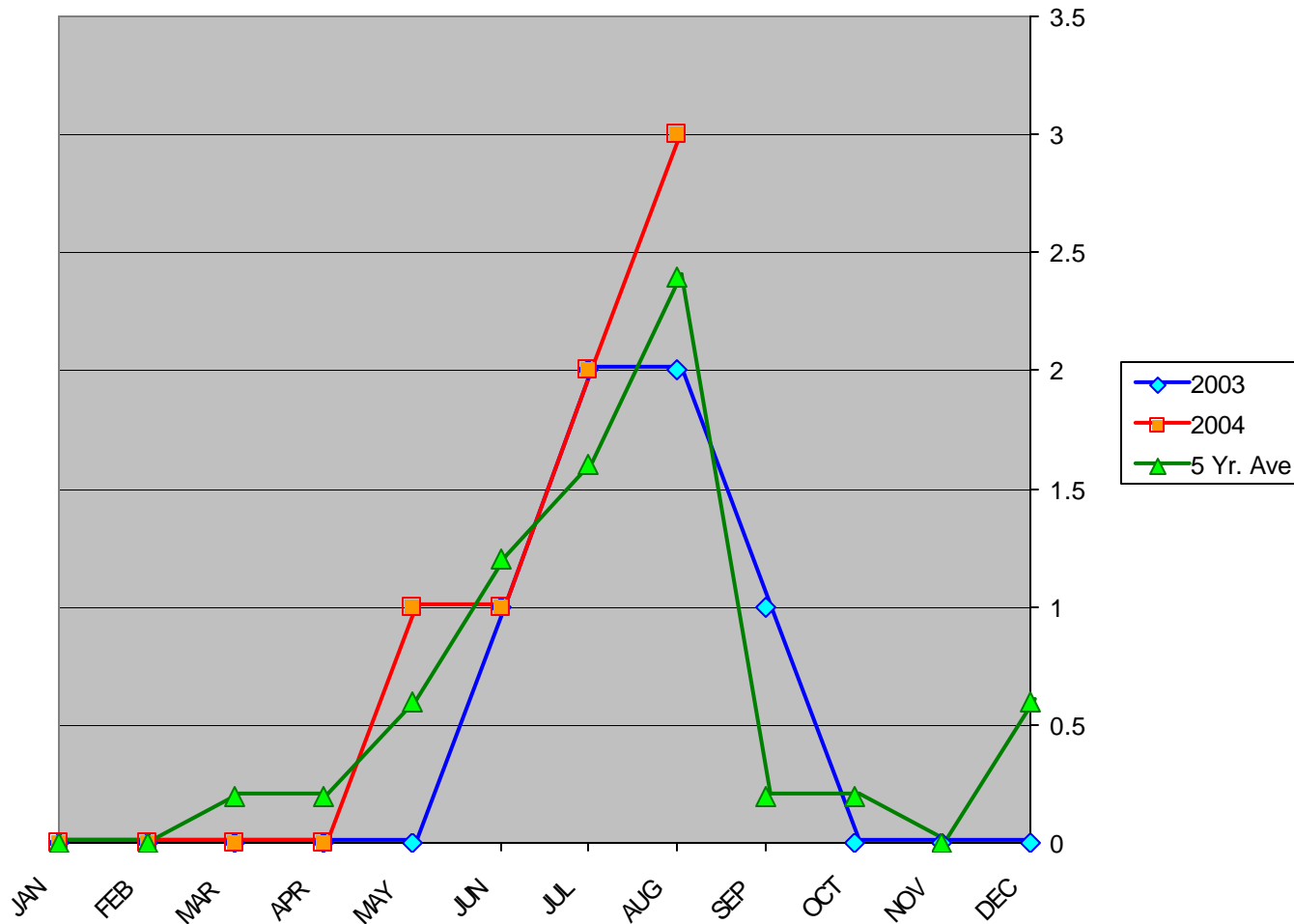
General Aviation Accidents in Alaska



AAL-240

System Safety Analysis Branch

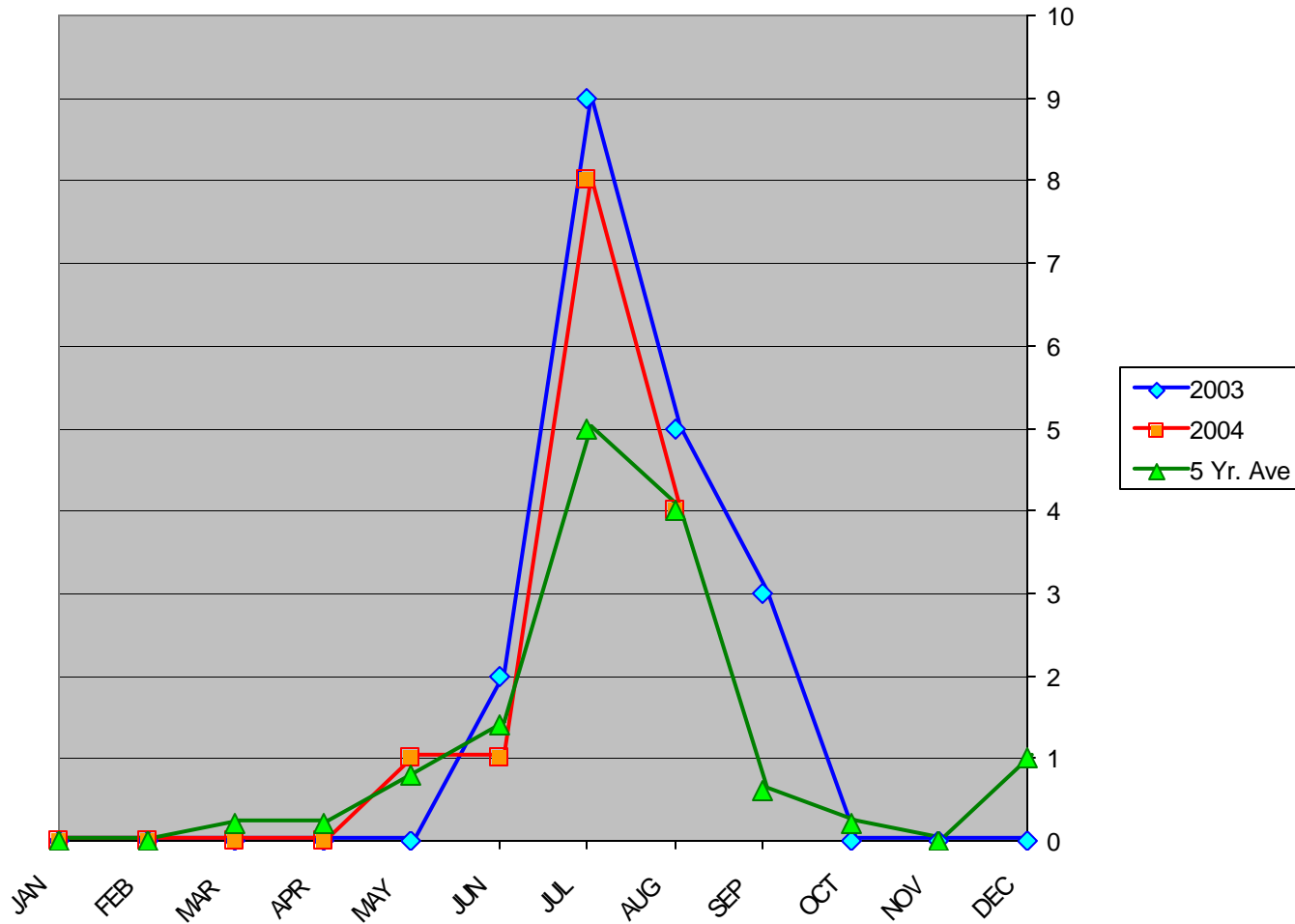
General Aviation Fatal Accidents in Alaska



AAL-240

System Safety Analysis Branch

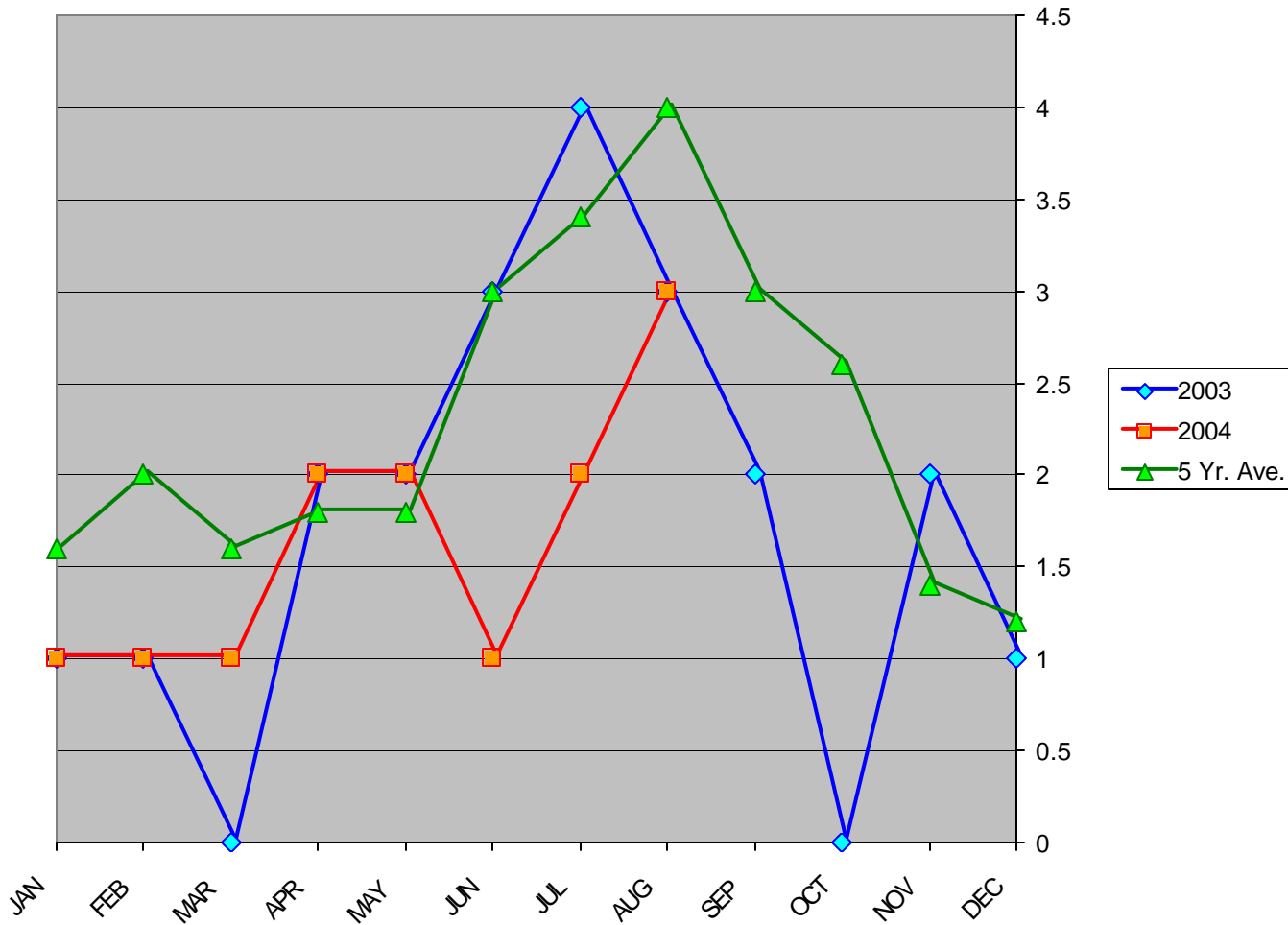
General Aviation Fatalities in Alaska



AAL-240

System Safety Analysis Branch

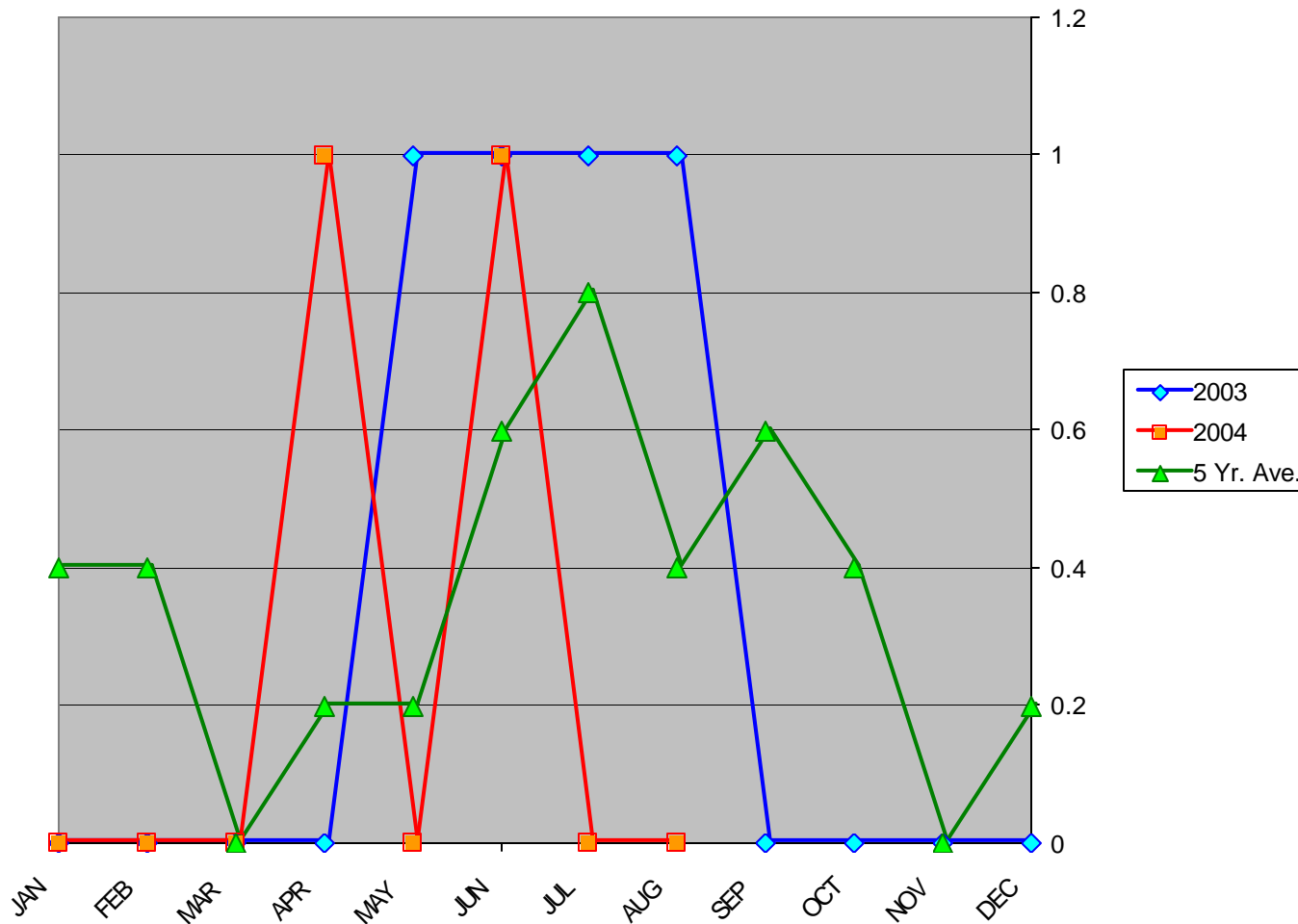
Air Carrier (Part 135) Accidents in Alaska



AAL-240

System Safety Analysis Branch

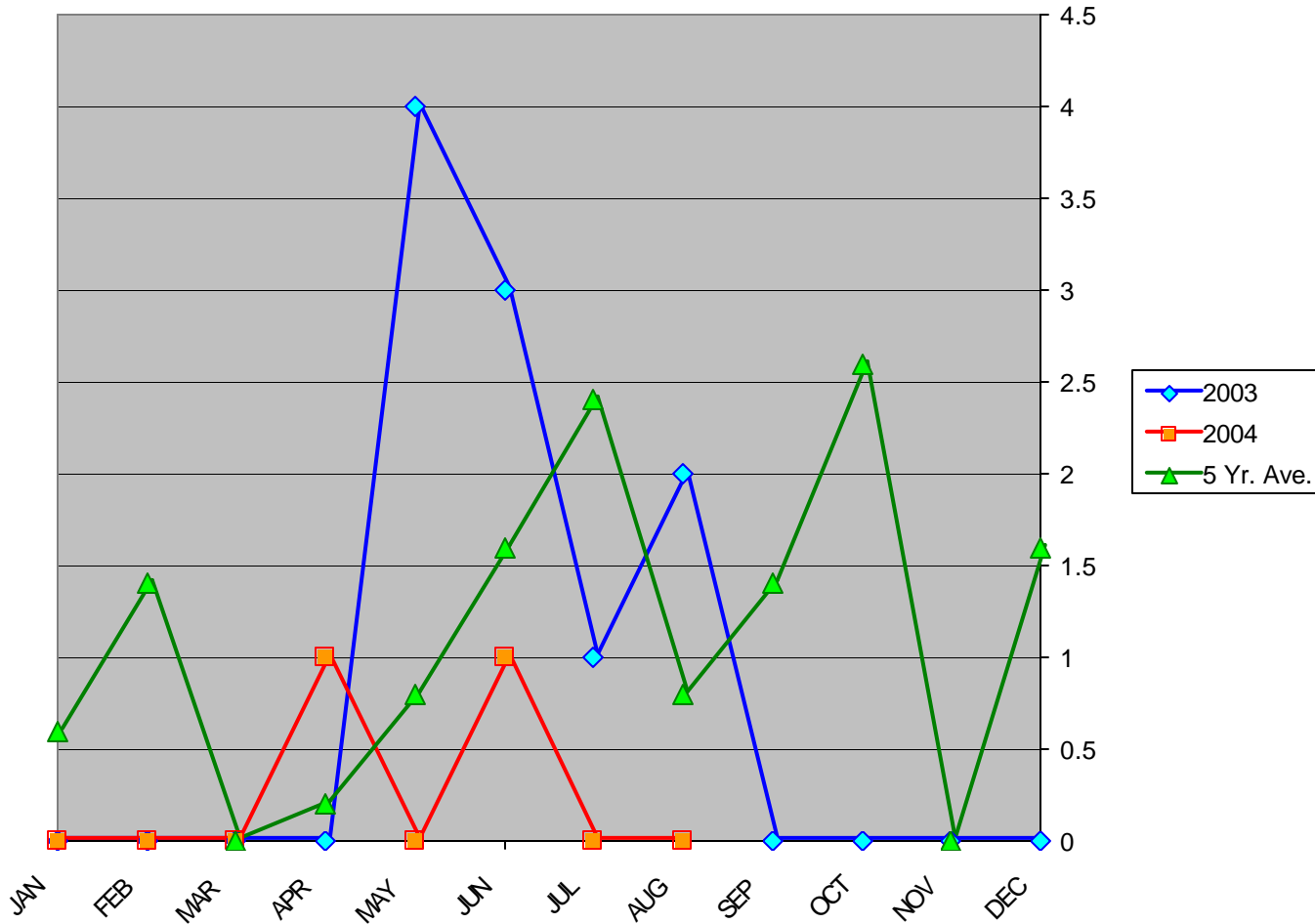
Air Carrier (FAR 135) Fatal Accidents in Alaska



AAL-240

System Safety Analysis Branch

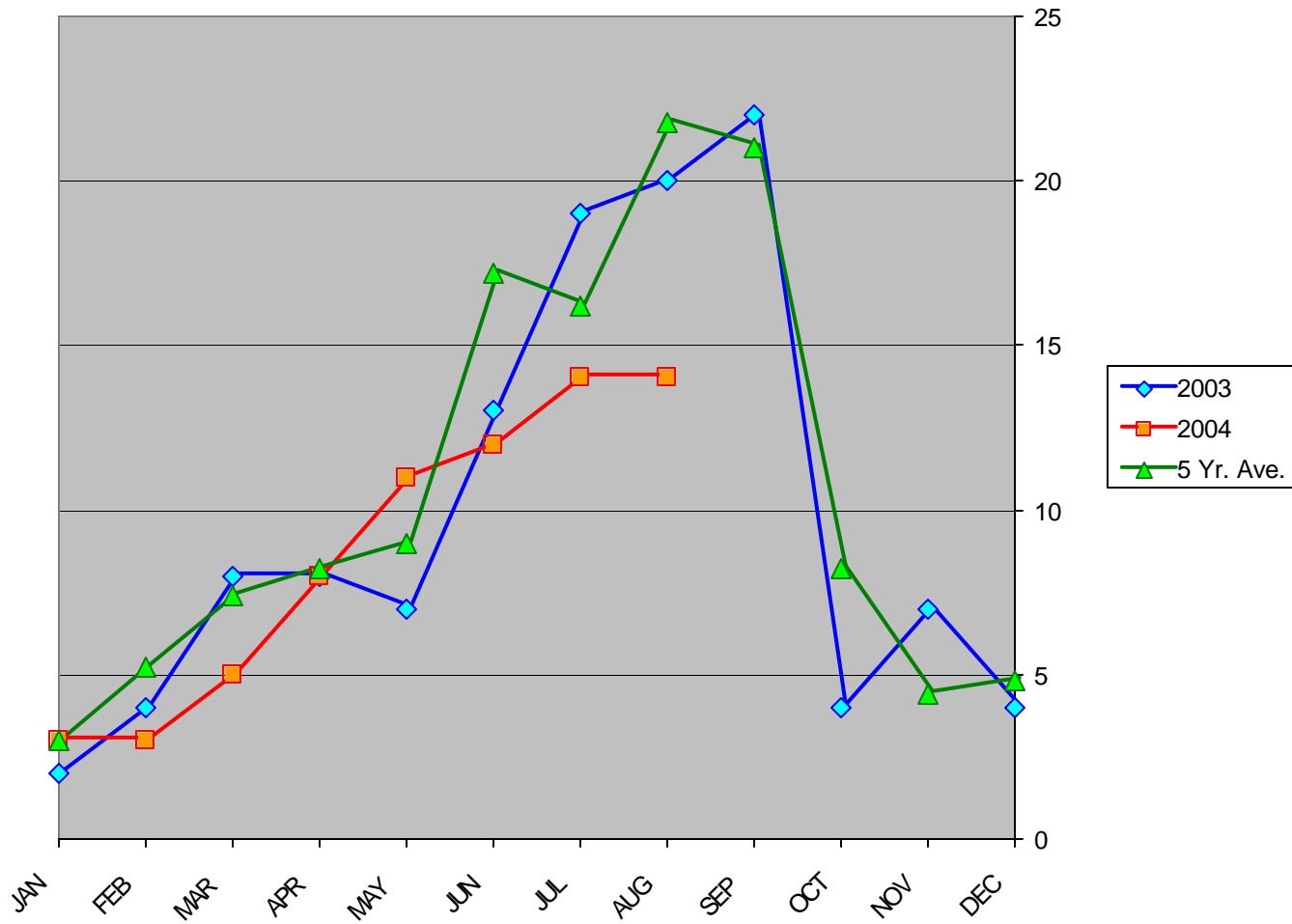
Air Carrier (FAR 135) Fatalities in Alaska



AAL-240

System Safety Analysis Branch

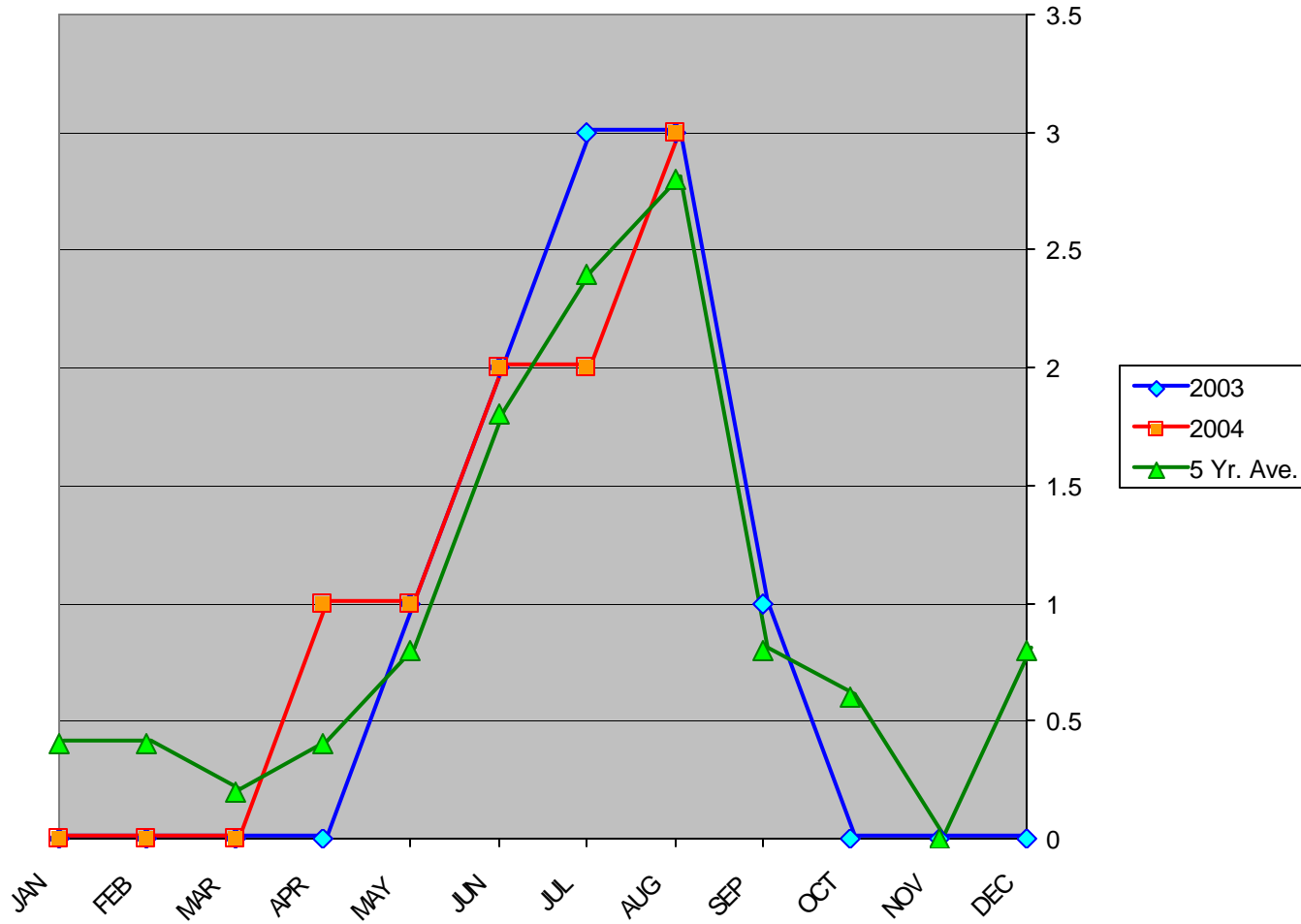
Total Accidents in Alaska



AAL-240

System Safety Analysis Branch

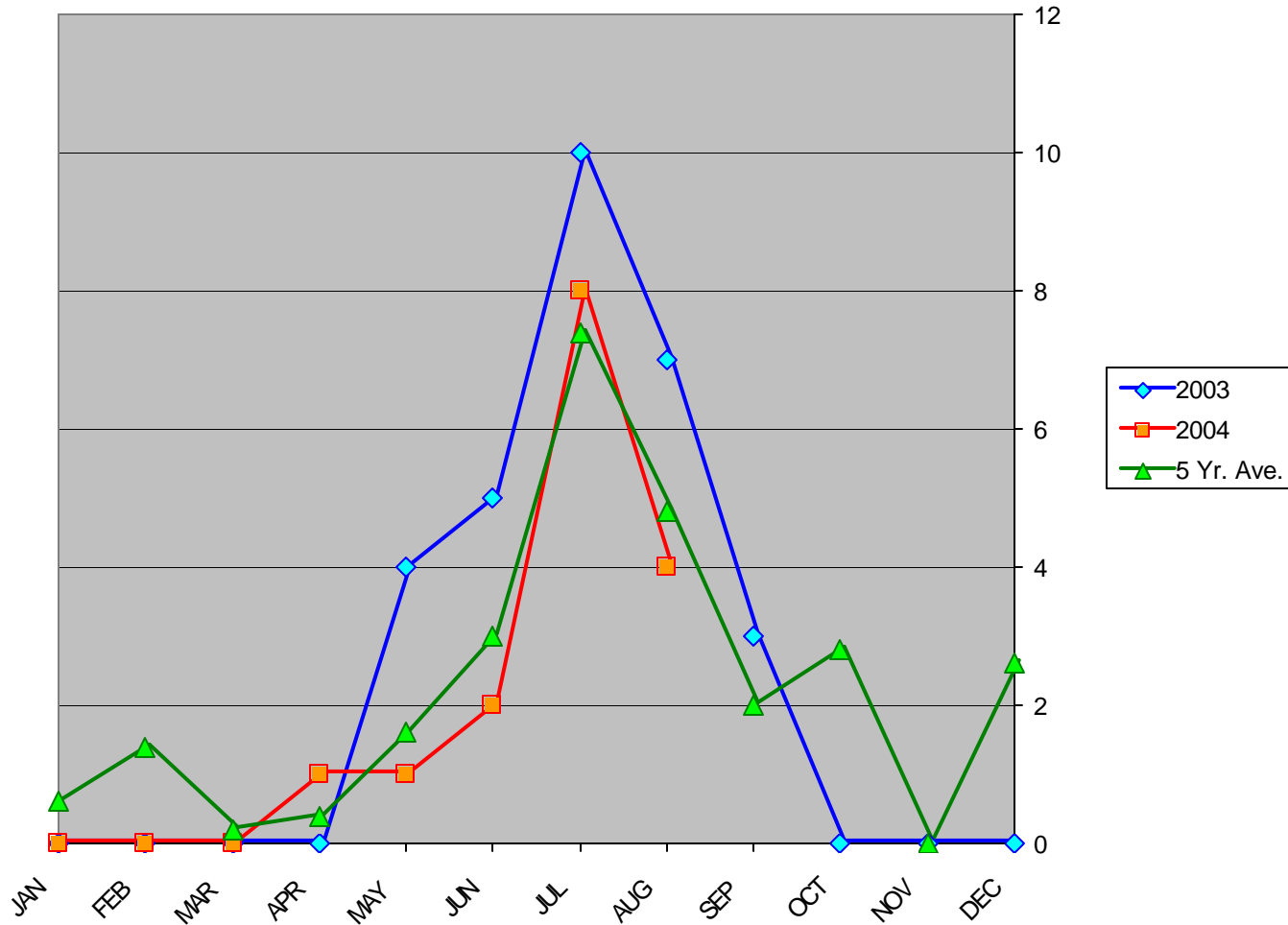
Total Fatal Accidents in Alaska



AAL-240

System Safety Analysis Branch

Total Fatalities in Alaska



AAL-240

System Safety Analysis Branch