



Alaska Accident Statistics August 2006

AAL-240

System Safety Analysis Branch

**FAA ALASKAN REGION
MONTHLY AIRCRAFT ACCIDENT SUMMARY
FISCAL YEAR 2006**

Accident Comparison for the month of August

	FY 2006	FY 2005	High	Low	Average
General Aviation*	11	16	20	11	15
Fatal Accidents	1	1	3	1	2
Fatalities	1	2	5	1	3.3
Air Carrier (Part 135)	3	2	5	2	3.2
Fatal Accidents	0	0	1	0	0.4
Fatalities	0	0	2	0	0.8
Air Carrier (Part 121)	0	0	0	0	0
Fatal Accidents	0	0	0	0	0
Fatalities	0	0	0	0	0
Total Accidents	14	18	25	14	18.2
Fatal	1	1	4	1	2.4
Fatalities	1	2	7	1	4.2

***(General Aviation includes Parts 91, 133, 137, 125, 129 & Public Use)**

This document is for comparison only. Totals frequently change due to reclassification.

SUMMARY

August 2006

For the month of August there were 11 General Aviation (GA) accidents, compared with 16 in August 2005. The 5-year average for GA accidents during the month of August is 15 events. There was one fatal GA accident in August 2006 resulting in one fatality. There was one fatal event during August 2005, resulting in two fatalities.

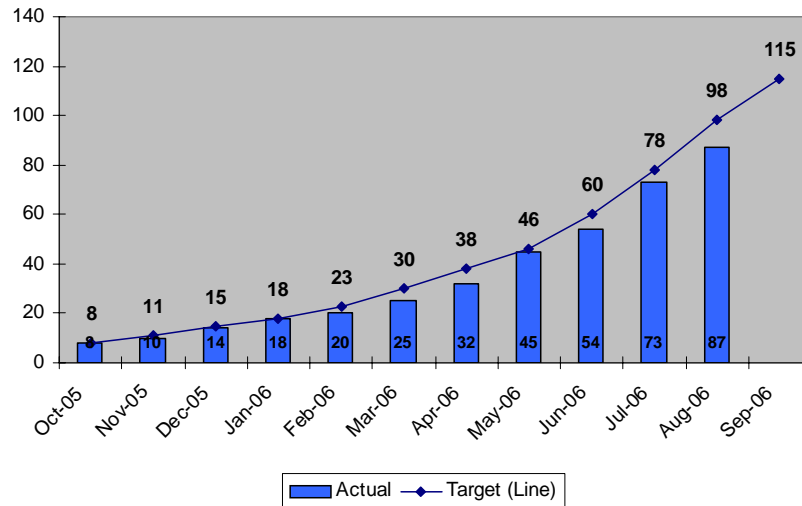
For the month of August there were three Part 135 Air Carrier accidents, compared with two in August of 2005. The 5-year average for Part 135 Air Carrier accidents during the month of August is 3.2 events. There were no fatal Part 135 Air Carrier accidents for the month of August in 2006 or 2005.

There were no Part 121 events for the month of August in 2006 or 2005. There were no fatal events in August 2006 or 2005.

There were a total of 14 aircraft accidents during August 2006. This is compared with 18 in August 2005. The 5-year average for accidents during the month of August is 18.2 events. There was one fatal event resulting in one fatality in August 2006. There was one fatal event, resulting in two fatalities in August 2005.

Note: Statistics contained in this report differ from past reports produced by the System Safety & Analysis Branch. This is caused by frequent reclassifications of events by the National Transportation Safety Board. The format of this report has been modified to display statistics by fiscal year instead of calendar year.

**Status of FAA Performance Targets
Alaska GA & 135 Accidents
Fiscal Year to Date
Cummulative Total**



Description

Reduce accidents in Alaska for General Aviation and all Part 135 operations by 20% by Fiscal Year (FY) 2009 (from the 2000-2002 average of 130 accidents per year to no more than 99 accidents per year). (FY2006 target is no more than 115 accidents)

This chart indicates the monthly total of Alaskan accidents. The graph shows the cumulative number of Alaskan accidents versus the target.

	Actual	Target (Line)	Index Range
Oct-05	8	8	Yellow
Nov-05	10	11	Yellow
Dec-05	14	15	Yellow
Jan-06	18	18	Yellow
Feb-06	20	23	Green
Mar-06	25	30	Green
Apr-06	32	38	Green
May-06	45	46	Yellow
Jun-06	54	60	Green
Jul-06	73	78	Yellow
Aug-06	87	98	Green
Sep-06		115	

GENERAL AVIATION TOTAL

FY	OCT	NOV	DEC	JAN	FEB	MAR	APR	MAY	JUN	JUL	AUG	SEP	TOTAL
96	11	4	4	2	0	11	18	12	11	13	19	26	131
97	5	1	1	6	5	15	15	11	13	10	16	18	116
98	5	0	2	3	3	8	7	14	21	22	18	24	127
99	4	2	2	2	2	8	9	10	15	17	23	21	115
2000	2	3	2	0	4	3	11	9	17	11	14	18	94
2001	10	3	6	3	4	7	7	5	16	13	27	17	118
2002	4	0	0	1	2	6	2	10	20	13	20	13	91
2003	8	3	7	0	3	8	5	5	10	16	17	20	102
2004	4	5	3	2	2	4	6	8	10	11	11	14	80
2005	10	1	3	3	6	7	12	7	6	19	16	16	106
2006	8	2	2	2	2	3	5	10	9	15	11		69
5 Yr. Ave.	6.8	2.2	3	1.6	3	5.6	6	8	11	14.8	15	16	99.4
MAX	10	5	7	3	6	8	12	10	20	19	20	20	118
MIN	4	0	0	0	2	3	2	5	6	11	11	13	80

GENERAL AVIATION FATAL ACCIDENTS

FY	OCT	NOV	DEC	JAN	FEB	MAR	APR	MAY	JUN	JUL	AUG	SEP	TOTAL
96	0	0	0	0	0	0	1	1	1	2	3	4	12
97	1	0	0	0	2	3	3	0	1	0	1	2	13
98	1	0	0	0	0	0	1	2	1	3	1	1	10
99	0	0	0	0	0	0	0	2	1	0	5	0	8
2000	0	0	0	0	0	0	0	1	2	2	2	0	7
2001	1	0	2	0	0	0	0	0	0	1	2	0	6
2002	0	0	0	0	0	1	1	1	2	1	3	0	9
2003	0	0	2	0	0	0	0	0	1	2	2	1	8
2004	0	0	0	0	0	0	0	1	1	2	3	1	8
2005	1	0	0	0	1	0	1	0	0	3	1	1	8
2006	0	0	0	2	0	0	1	0	1	2	1		7
5 Yr. Ave	0.2	0	0.4	0.4	0.2	0.2	0.6	0.4	1	2	2	0.6	7.8
MAX	1	0	2	2	1	1	1	1	2	3	3	1	9
MIN	0	0	0	0	0	0	0	0	0	1	1	0	6

GENERAL AVIATION FATALITIES

FY	OCT	NOV	DEC	JAN	FEB	MAR	APR	MAY	JUN	JUL	AUG	SEP	TOTAL
96	0	0	0	0	0	0	1	2	1	3	4	8	19
97	1	0	0	0	4	6	6	0	4	0	3	3	27
98	1	0	0	0	0	0	1	4	1	5	1	1	14
99	0	0	0	0	0	0	0	3	1	0	11	0	15
2000	0	0	0	0	0	0	0	1	2	2	4	0	9
2001	1	0	4	0	0	0	0	0	0	4	2	0	11
2002	0	0	0	0	0	1	1	2	2	2	5	0	13
2003	0	0	2	0	0	0	0	0	2	9	5	3	21
2004	0	0	0	0	0	0	0	1	1	8	4	2	16
2005	1	0	0	0	3	0	1	0	0	6	2	2	15
2006	0	0	0	2	0	0	5	0	1	4	1		13
5 Yr. Ave	0.2	0	0.4	0.4	0.6	0.2	1.4	0.6	1.2	5.8	3.4	1.4	15.2
MAX	1	0	2	2	3	1	5	2	2	9	5	3	21
MIN	0	0	0	0	0	0	0	0	0	2	1	0	11

AIR CARRIER TOTAL (FAR 135)

FY	OCT	NOV	DEC	JAN	FEB	MAR	APR	MAY	JUN	JUL	AUG	SEP	TOTAL
96	0	2	3	0	0	3	2	3	2	4	7	7	33
97	1	2	3	2	2	2	6	1	2	7	5	7	40
98	2	2	1	1	4	0	3	6	5	2	3	8	37
99	4	0	3	3	1	2	7	0	5	1	3	5	34
2000	6	1	4	1	4	4	1	2	2	1	3	4	33
2001	2	3	1	4	0	0	3	2	1	6	3	1	26
2002	3	0	0	1	4	3	1	1	8	4	5	3	33
2003	2	1	0	1	1	0	2	2	3	4	3	2	21
2004	0	2	1	1	1	1	2	2	1	1	3	4	19
2005	2	0	1	0	2	1	2	2	1	7	2	2	22
2006	0	0	2	2	0	2	2	3	0	4	3		18
5 Yr. Ave.	1.4	0.6	0.8	1	1.6	1.4	1.8	2	2.6	4	3.2	2.4	24.2
MAX	3	2	2	2	4	3	2	3	8	7	5	4	33
MIN	0	0	0	0	0	0	1	1	0	1	2	1	19

AIR CARRIER FATAL ACCIDENTS (FAR 135)

FY	OCT	NOV	DEC	JAN	FEB	MAR	APR	MAY	JUN	JUL	AUG	SEP	TOTAL
96	0	0	0	0	0	0	0	0	0	1	1	1	3
97	1	2	1	1	0	0	1	0	1	2	1	1	11
98	1	1	0	0	1	0	0	1	0	0	1	2	7
99	0	0	0	0	0	0	1	0	2	0	0	1	4
2000	0	0	1	0	1	0	0	0	1	0	0	2	5
2001	0	0	0	1	0	0	0	0	0	2	0	0	3
2002	2	0	0	1	1	0	0	0	0	1	1	0	6
2003	0	0	0	0	0	0	0	1	1	1	1	0	4
2004	0	0	0	0	0	0	1	0	1	0	0	1	3
2005	0	0	0	0	0	0	0	0	0	0	0	0	0
2006	0	0	0	0	0	0	0	0	0	0	0	0	0
5 Yr. Ave.	0.4	0	0	0.2	0.2	0	0.2	0.2	0.4	0.4	0.4	0.2	3.2
MAX	2	0	0	1	1	0	1	1	1	2	1	1	6
MIN	0	0	0	0	0	0	0	0	0	0	0	0	0

AIR CARRIER FATALITIES (FAR 135)

FY	OCT	NOV	DEC	JAN	FEB	MAR	APR	MAY	JUN	JUL	AUG	SEP	TOTAL
96	0	0	0	0	0	0	0	0	0	1	2	3	6
97	3	3	1	1	0	0	5	0	2	8	1	1	25
98	2	8	0	0	1	0	0	2	0	0	1	6	20
99	0	0	0	0	0	0	1	0	8	0	0	1	10
2000	0	0	6	0	6	0	0	0	4	0	0	6	22
2001	0	0	0	2	0	0	0	0	0	7	0	0	9
2002	13	0	0	1	1	0	0	0	0	4	2	0	21
2003	0	0	0	0	0	0	0	4	3	1	2	0	10
2004	0	0	0	0	0	0	1	0	1	0	0	5	7
2005	0	0	0	0	0	0	0	0	0	0	0	0	0
2006	0	0	0	0	0	0	0	0	0	0	0		0
5 Yr. Ave.	2.6	0	0	0.2	0.2	0	0.2	0.8	0.8	1	0.8	1	9.4
MAX	13	0	0	1	1	0	1	4	3	4	2	5	21
MIN	0	0	0	0	0	0	0	0	0	0	0	0	0

SUBTOTAL AK GOAL ACCIDENTS (GA & FAR 135)

FY	OCT	NOV	DEC	JAN	FEB	MAR	APR	MAY	JUN	JUL	AUG	SEP	TOTAL
96	11	6	7	2	0	14	20	15	13	17	26	33	164
97	6	3	4	8	7	17	21	12	15	17	21	25	156
98	7	2	3	4	7	8	10	20	26	24	21	32	164
99	8	2	5	5	3	10	16	10	20	18	26	26	149
2000	8	4	6	1	8	7	12	11	19	12	17	22	127
2001	12	6	7	7	4	7	10	7	17	19	30	18	144
2002	7	0	0	2	6	9	3	11	28	17	25	16	124
2003	10	4	7	1	4	8	7	7	13	20	20	22	123
2004	4	7	4	3	3	5	8	10	11	12	14	18	99
2005	12	1	4	3	8	8	14	9	7	26	18	18	128
2006	8	2	4	4	2	5	7	13	9	19	14		87
5 Yr. Ave.	8.2	2.8	3.8	2.6	4.6	7	7.8	10	13.6	18.8	18.2	18.4	123.6
MAX	12	7	7	4	8	9	14	13	28	26	25	22	144
MIN	4	0	0	1	2	5	3	7	7	12	14	16	99

AAL-240

System Safety Analysis Branch

SUBTOTAL AK GOAL FATAL ACCIDENTS (GA & FAR 135)

FY	OCT	NOV	DEC	JAN	FEB	MAR	APR	MAY	JUN	JUL	AUG	SEP	TOTAL
96	0	0	0	0	0	0	1	1	1	3	4	5	15
97	2	2	1	1	2	3	4	0	2	2	2	3	24
98	2	1	0	0	1	0	1	3	1	3	2	3	17
99	0	0	0	0	0	0	1	2	3	0	5	1	12
2000	0	0	1	0	1	0	0	1	3	2	2	2	12
2001	1	0	2	1	0	0	0	0	0	3	2	0	9
2002	2	0	0	1	1	1	1	1	2	2	4	0	15
2003	0	0	2	0	0	0	0	1	2	3	3	1	12
2004	0	0	0	0	0	0	1	1	2	2	3	2	11
2005	1	0	0	0	1	0	1	0	0	3	1	1	8
2006	0	0	0	2	0	0	1	0	1	2	1		7
5 Yr. Ave.	0.6	0	0.4	0.6	0.4	0.2	0.8	0.6	1.4	2.4	2.4	0.8	11
MAX	2	0	2	2	1	1	1	1	2	3	4	2	15
MIN	0	0	0	0	0	0	0	0	0	2	1	0	8

AAL-240

System Safety Analysis Branch

SUBTOTAL AK Goal FATALITIES (GA & FAR 135)

FY	OCT	NOV	DEC	JAN	FEB	MAR	APR	MAY	JUN	JUL	AUG	SEP	TOTAL
96	0	0	0	0	0	0	1	2	1	4	6	11	25
97	4	3	1	1	4	6	11	0	6	8	4	4	52
98	3	8	0	0	1	0	1	6	1	5	2	7	34
99	0	0	0	0	0	0	1	3	9	0	11	1	25
2000	0	0	6	0	6	0	0	1	6	2	4	6	31
2001	1	0	4	2	0	0	0	0	0	11	2	0	20
2002	13	0	0	1	1	1	1	2	2	6	7	0	34
2003	0	0	2	0	0	0	0	4	5	10	7	3	31
2004	0	0	0	0	0	0	1	1	2	8	4	7	23
2005	1	0	0	0	3	0	1	0	0	6	2	2	15
2006	0	0	0	2	0	0	5	0	1	4	1		13
5 Yr. Ave.	2.8	0	0.4	0.6	0.8	0.2	1.6	1.4	2	6.8	4.2	2.4	24.6
MAX	13	0	2	2	3	1	5	4	5	10	7	7	34
MIN	0	0	0	0	0	0	0	0	0	4	1	0	15

AAL-240

System Safety Analysis Branch

AIR CARRIER TOTAL (FAR 121)

FY	OCT	NOV	DEC	JAN	FEB	MAR	APR	MAY	JUN	JUL	AUG	SEP	TOTAL
96	0	0	0	0	2	0	0	1	0	2	0	0	5
97	0	0	1	0	0	0	1	0	0	0	1	0	3
98	0	0	0	0	0	0	0	0	1	0	1	0	2
99	0	2	0	0	0	0	0	2	0	1	2	0	7
2000	0	0	0	0	0	0	0	0	0	0	0	0	0
2001	0	1	0	0	0	0	0	0	1	1	0	1	4
2002	0	0	1	0	1	1	0	0	0	1	0	0	4
2003	0	0	0	1	0	0	1	0	0	0	0	0	2
2004	0	0	0	0	0	0	0	0	0	0	0	0	0
2005	0	0	0	1	0	0	0	0	1	0	0	0	2
2006	0	0	0	0	0	0	0	0	0	0	0	0	0
5 Yr. Ave.	0	0	0.2	0.4	0.2	0.2	0.2	0	0.2	0.2	0	0.2	2.4
MAX	0	0	1	1	1	1	1	0	1	1	0	1	4
MIN	0	0	0	0	0	0	0	0	0	0	0	0	0

AIR CARRIER FATAL ACCIDENTS (FAR 121)

FY	OCT	NOV	DEC	JAN	FEB	MAR	APR	MAY	JUN	JUL	AUG	SEP	TOTAL
96	0	0	0	0	0	0	0	0	0	1	0	0	1
97	0	0	0	0	0	0	0	0	0	0	0	0	0
98	0	0	0	0	0	0	0	0	0	0	0	0	0
99	0	0	0	0	0	0	0	0	0	0	0	0	0
2000	0	0	0	0	0	0	0	0	0	0	0	0	0
2001	0	0	0	0	0	0	0	0	0	0	0	0	0
2002	0	0	0	0	0	0	0	0	0	0	0	0	0
2003	0	0	0	0	0	0	0	0	0	0	0	0	0
2004	0	0	0	0	0	0	0	0	0	0	0	0	0
2005	0	0	0	0	0	0	0	0	0	0	0	0	0
2006	0	0	0	0	0	0	0	0	0	0	0	0	0
5 Yr. Ave.	0	0	0	0	0	0	0	0	0	0	0	0	0
MAX	0	0	0	0	0	0	0	0	0	0	0	0	0
MIN	0	0	0	0	0	0	0	0	0	0	0	0	0

AIR CARRIER FATALITIES (FAR 121)

FY	OCT	NOV	DEC	JAN	FEB	MAR	APR	MAY	JUN	JUL	AUG	SEP	TOTAL
96	0	0	0	0	0	0	0	0	0	4	0	0	4
97	0	0	0	0	0	0	0	0	0	0	0	0	0
98	0	0	0	0	0	0	0	0	0	0	0	0	0
99	0	0	0	0	0	0	0	0	0	0	0	0	0
2000	0	0	0	0	0	0	0	0	0	0	0	0	0
2001	0	0	0	0	0	0	0	0	0	0	0	0	0
2002	0	0	0	0	0	0	0	0	0	0	0	0	0
2003	0	0	0	0	0	0	0	0	0	0	0	0	0
2004	0	0	0	0	0	0	0	0	0	0	0	0	0
2005	0	0	0	0	0	0	0	0	0	0	0	0	0
2006	0	0	0	0	0	0	0	0	0	0	0	0	0
5 Yr. Ave.	0	0	0	0	0	0	0	0	0	0	0	0	0
MAX	0	0	0	0	0	0	0	0	0	0	0	0	0
MIN	0	0	0	0	0	0	0	0	0	0	0	0	0

TOTAL ACCIDENTS All Events

FY	OCT	NOV	DEC	JAN	FEB	MAR	APR	MAY	JUN	JUL	AUG	SEP	TOTAL
96	11	6	7	2	2	14	20	16	13	19	26	33	169
97	6	3	5	8	7	17	22	12	15	17	22	25	159
98	7	2	3	4	7	8	10	20	27	24	22	32	166
99	8	4	5	5	3	10	16	12	20	19	28	26	156
2000	8	4	6	1	8	7	12	11	19	12	17	22	127
2001	12	7	7	7	4	7	10	7	18	20	30	19	148
2002	7	0	1	2	7	10	3	11	28	18	25	16	128
2003	10	4	7	2	4	8	8	7	13	20	20	22	125
2004	4	7	4	3	3	5	8	10	12	13	14	18	101
2005	12	1	4	4	8	8	14	9	8	26	18	18	130
2006	8	2	4	4	2	5	7	13	9	19	14		87
5 Yr. Ave.	8.2	2.8	4	3	4.8	7.2	8	10	14	19.2	18.2	18.6	126.4
MAX	12	7	7	4	8	10	14	13	28	26	25	22	148
MIN	4	0	1	2	2	5	3	7	8	13	14	16	101

AAL-240
System Safety Analysis Branch

TOTAL FATAL ACCIDENTS All Events

FY	OCT	NOV	DEC	JAN	FEB	MAR	APR	MAY	JUN	JUL	AUG	SEP	TOTAL
96	0	0	0	0	0	0	1	1	1	4	4	5	16
97	2	2	1	1	2	3	4	0	2	2	2	3	24
98	2	1	0	0	1	0	1	3	1	3	2	3	17
99	0	0	0	0	0	0	1	2	3	0	5	1	12
2000	0	0	1	0	1	0	0	1	3	2	2	2	12
2001	1	0	2	1	0	0	0	0	0	3	2	0	9
2002	2	0	0	1	1	1	1	1	2	2	4	0	15
2003	0	0	2	0	0	0	0	1	2	3	3	1	12
2004	0	0	0	0	0	0	1	1	2	2	3	2	11
2005	1	0	0	0	1	0	1	0	0	3	1	1	8
2006	0	0	0	2	0	0	1	0	1	2	1		7
5 Yr. Ave.	0.6	0	0.4	0.6	0.4	0.2	0.8	0.6	1.4	2.4	2.4	0.8	11
MAX	2	0	2	2	1	1	1	1	2	3	4	2	15
MIN	0	0	0	0	0	0	0	0	0	2	1	0	8

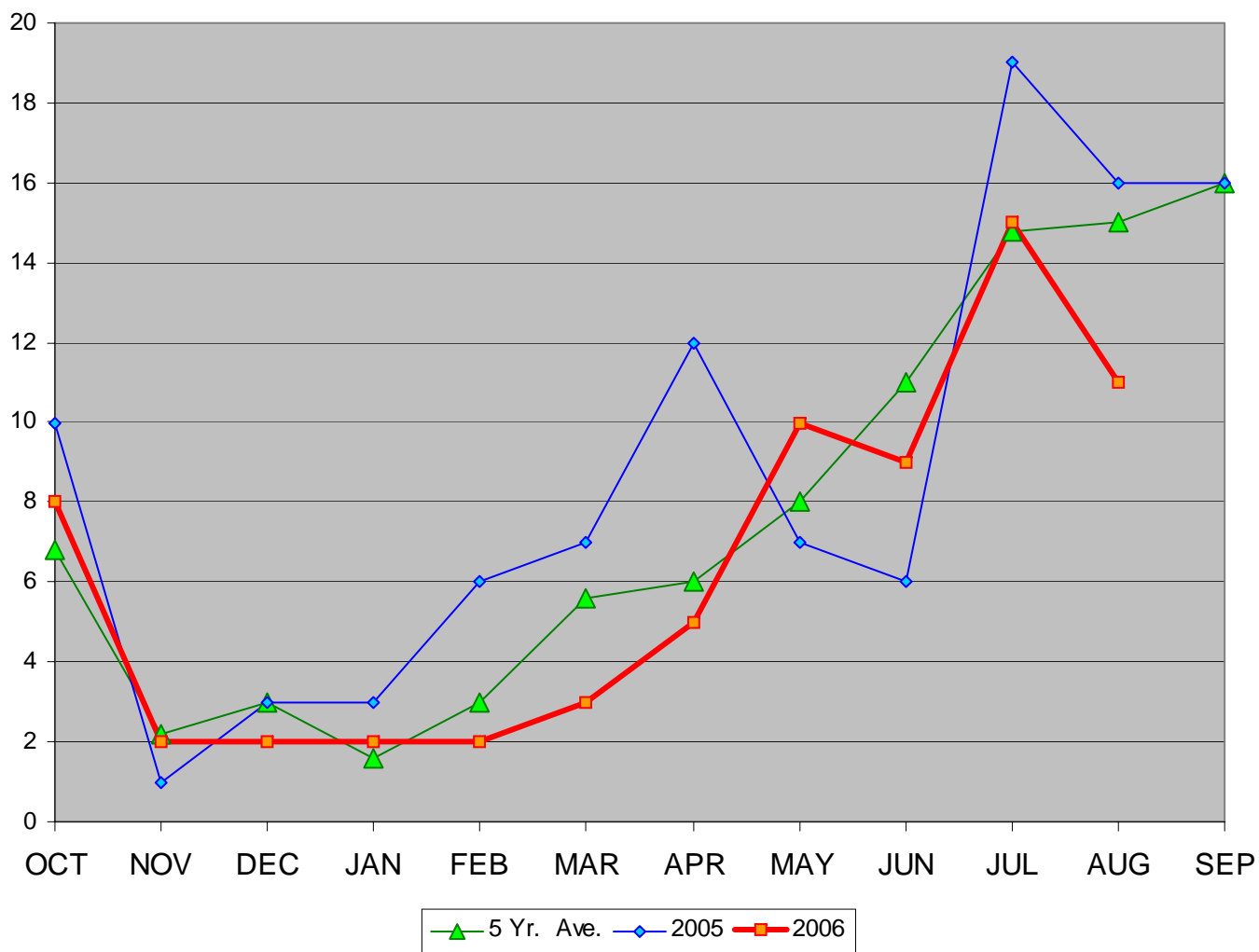
TOTAL FATALITIES (All Events)

FY	OCT	NOV	DEC	JAN	FEB	MAR	APR	MAY	JUN	JUL	AUG	SEP	TOTAL
96	0	0	0	0	0	0	1	2	1	8	6	11	29
97	4	3	1	1	4	6	11	0	6	8	4	4	52
98	3	8	0	0	1	0	1	6	1	5	2	7	34
99	0	0	0	0	0	0	1	3	9	0	11	1	25
2000	0	0	6	0	6	0	0	1	6	2	4	6	31
2001	1	0	4	2	0	0	0	0	0	11	2	0	20
2002	13	0	0	1	1	1	1	2	2	6	7	0	34
2003	0	0	2	0	0	0	0	4	5	10	7	3	31
2004	0	0	0	0	0	0	1	1	2	8	4	7	23
2005	1	0	0	0	3	0	1	0	0	6	2	2	15
2006	0	0	0	2	0	0	5	0	1	4	1		13
5 Yr. Ave.	2.8	0	0.4	0.6	0.8	0.2	1.6	1.4	2	6.8	4.2	2.4	24.6
MAX	13	0	2	2	3	1	5	4	5	10	7	7	34
MIN	0	0	0	0	0	0	0	0	0	4	1	0	15

AAI-240

System Safety Analysis Branch

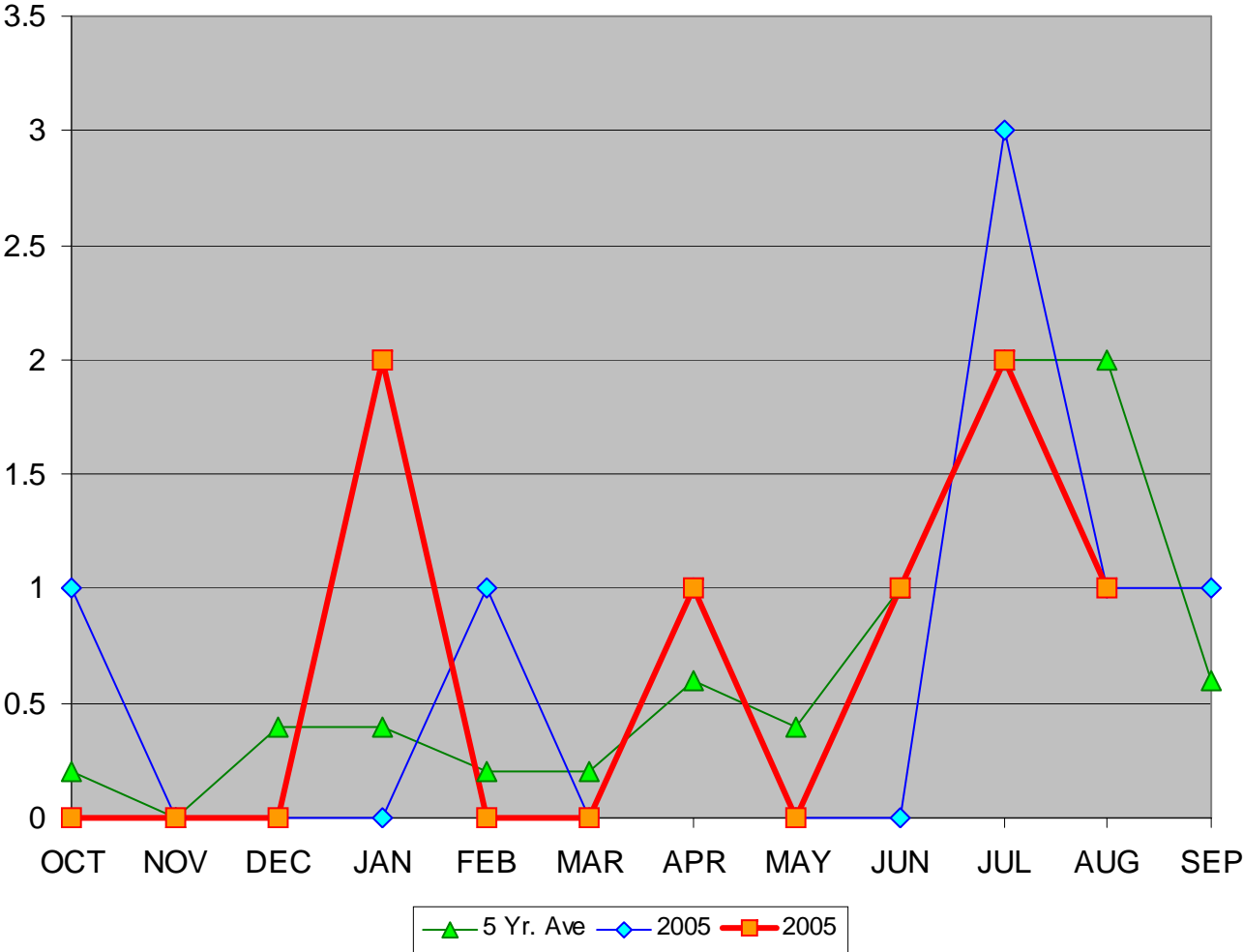
General Aviation Accidents in Alaska



AAL-240

System Safety Analysis Branch

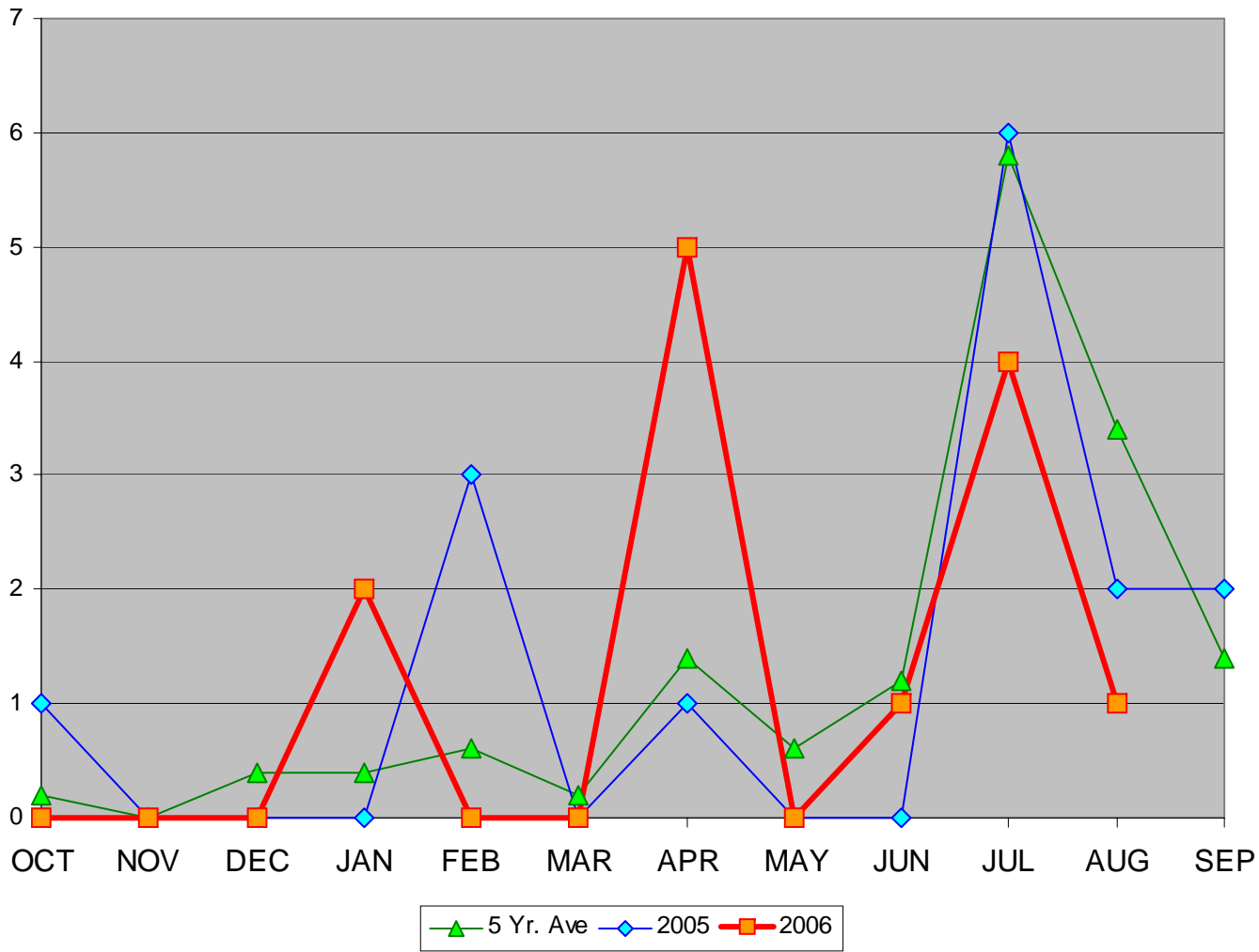
General Aviation Fatal Accidents in Alaska



AAL-240

System Safety Analysis Branch

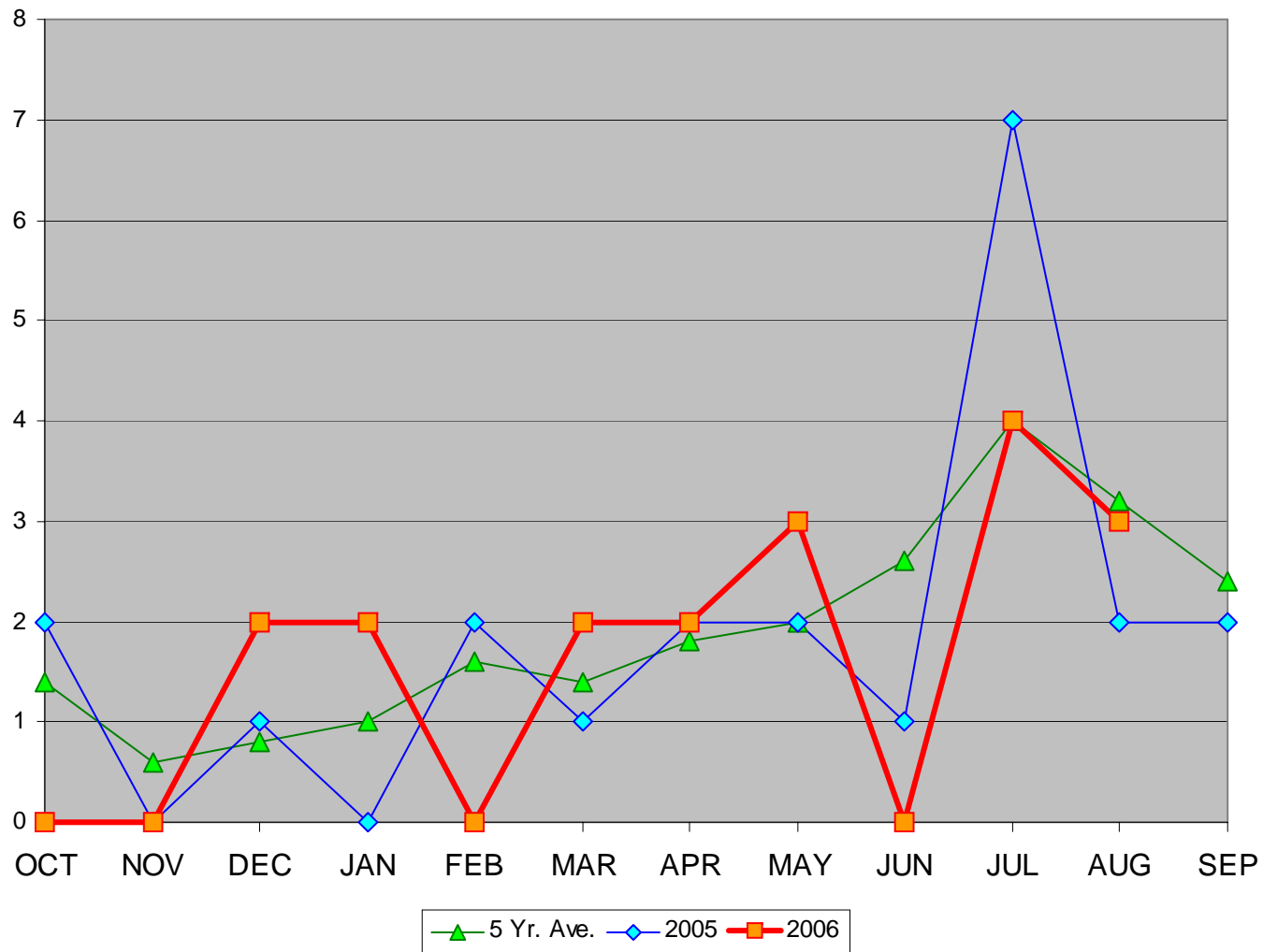
General Aviation Fatalities in Alaska



AAAL-240

System Safety Analysis Branch

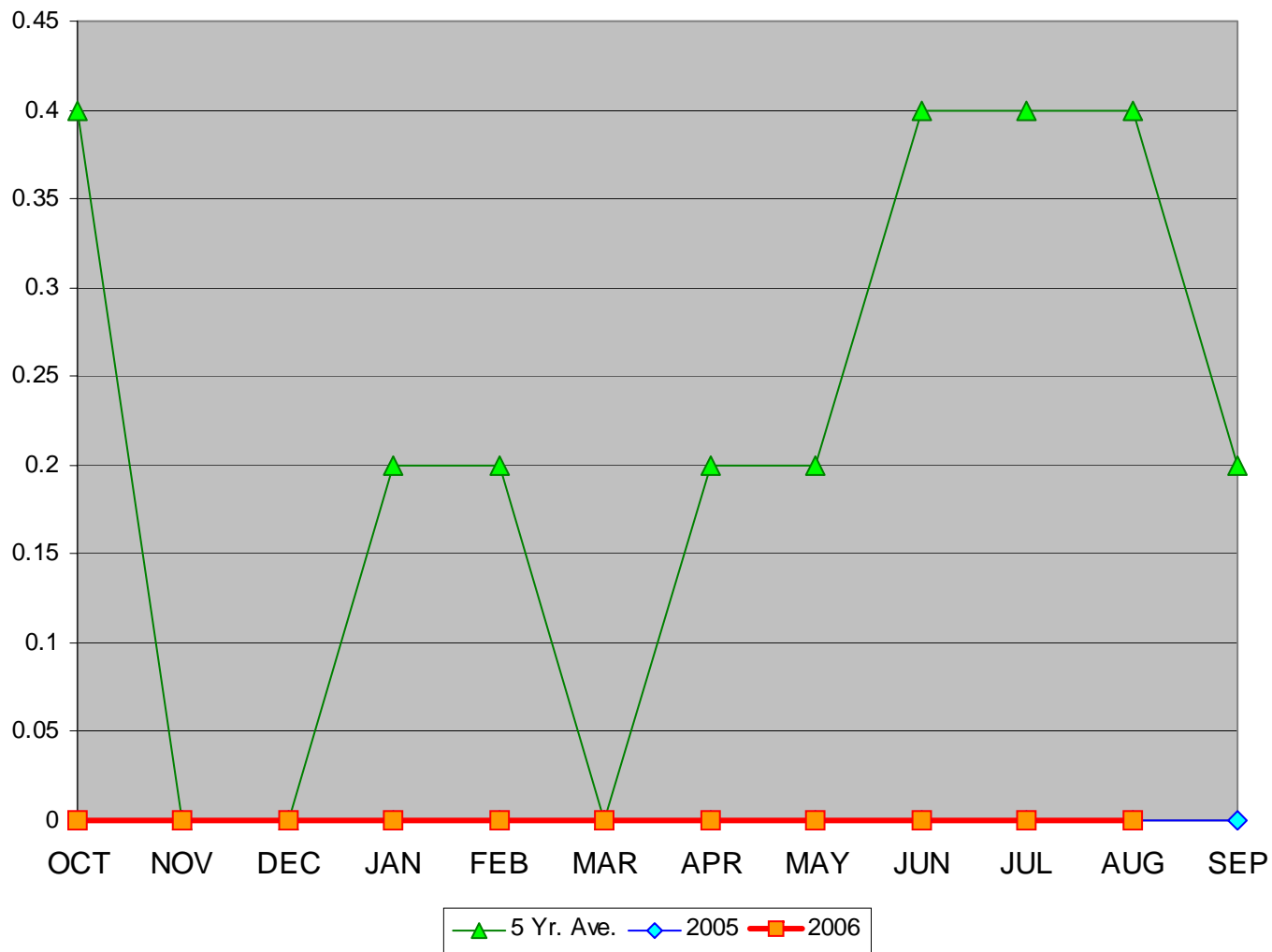
Air Carrier (Part 135) Accidents in Alaska



AAL-240

System Safety Analysis Branch

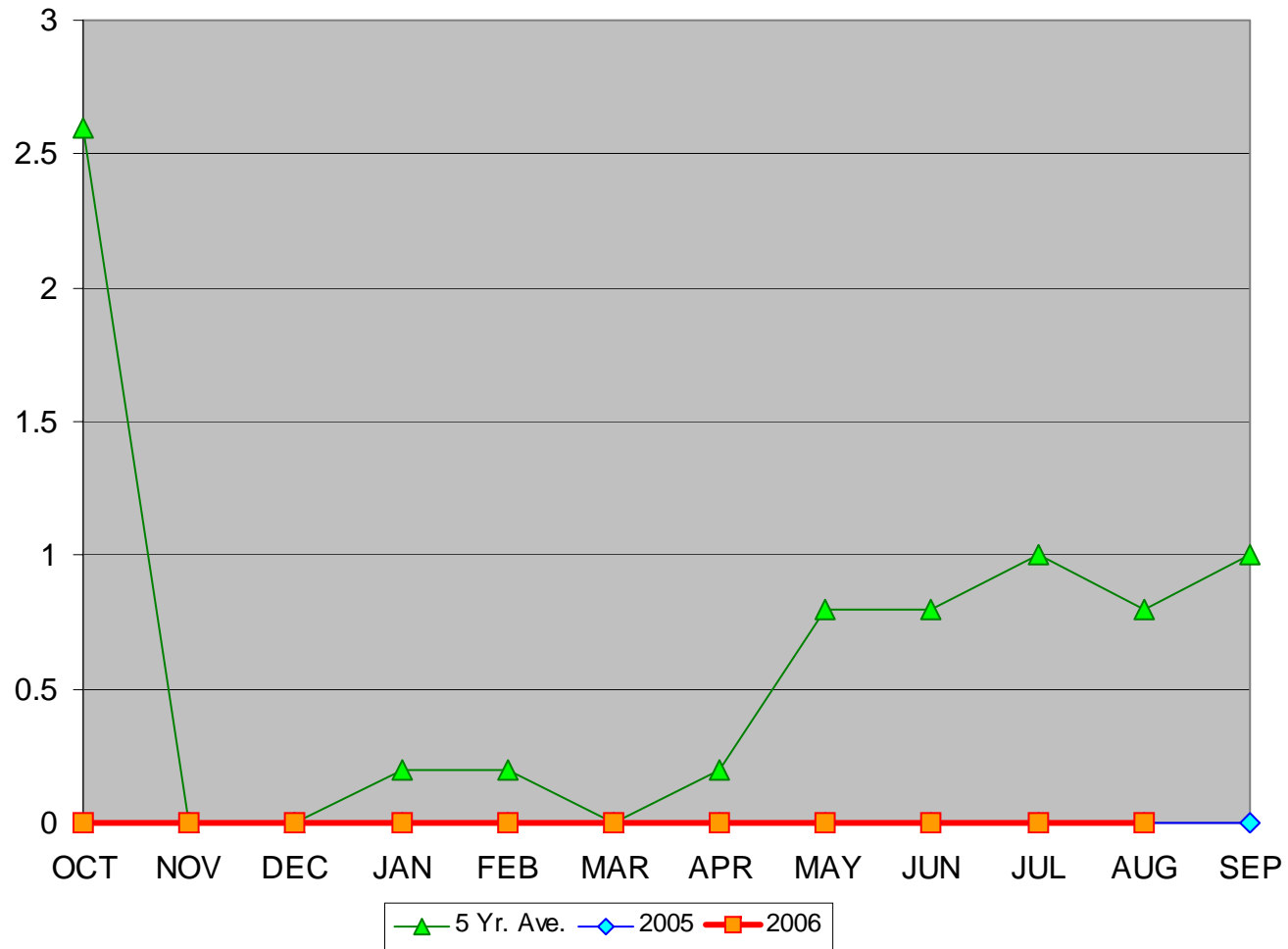
Air Carrier (FAR 135) Fatal Accidents in Alaska



AAI-240

System Safety Analysis Branch

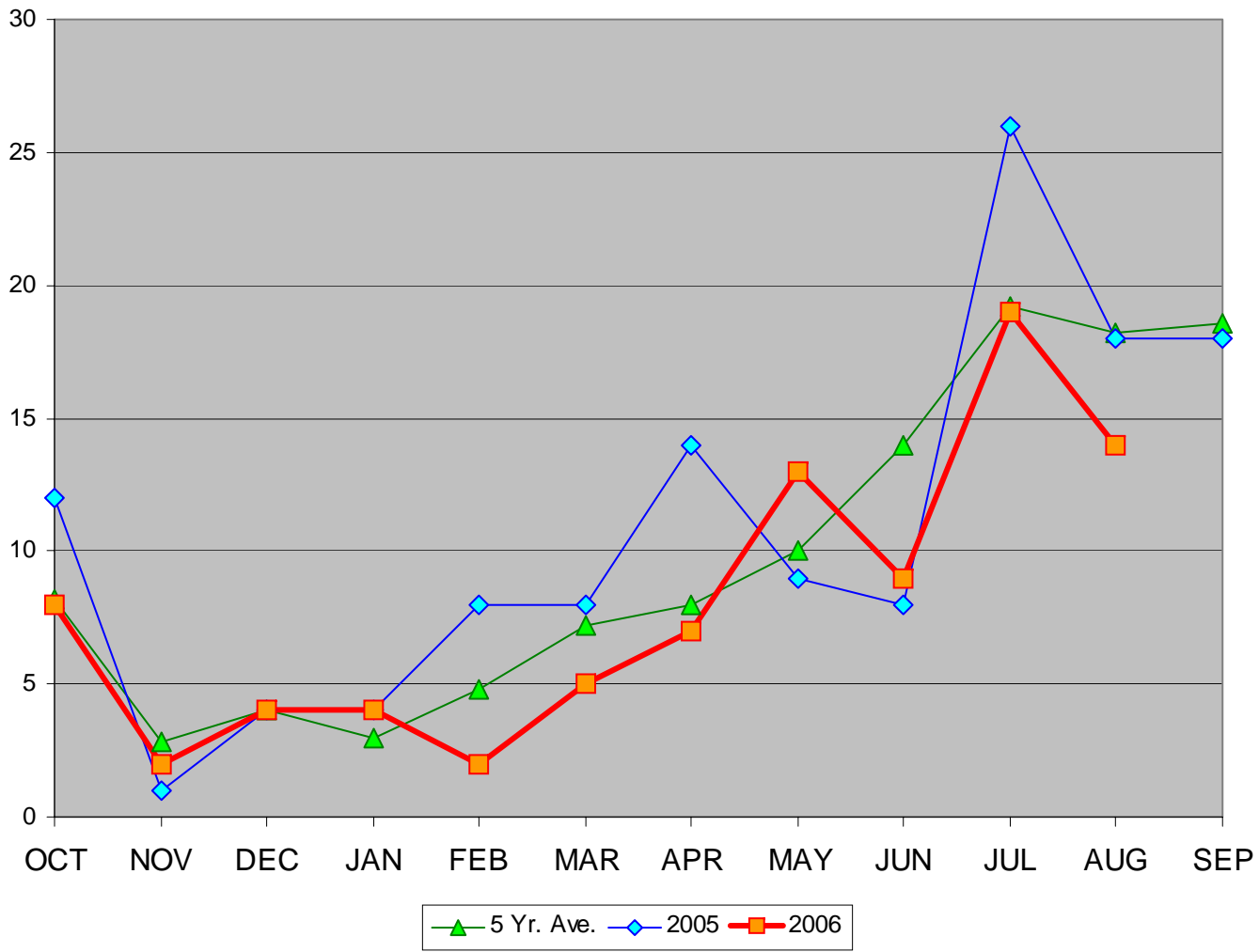
Air Carrier (FAR 135) Fatalities in Alaska



AAL-240

System Safety Analysis Branch

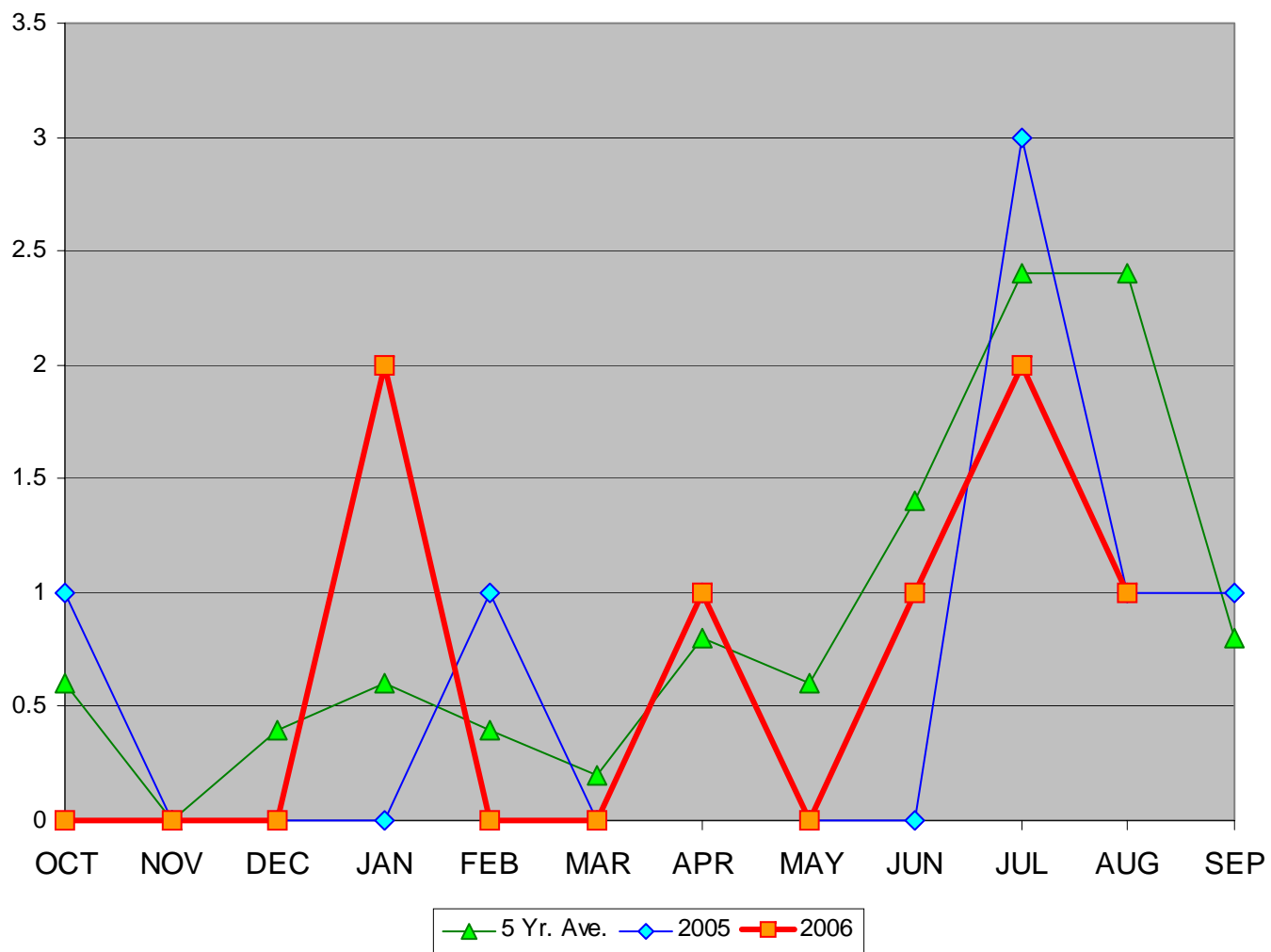
Total Accidents in Alaska



AAL-240

System Safety Analysis Branch

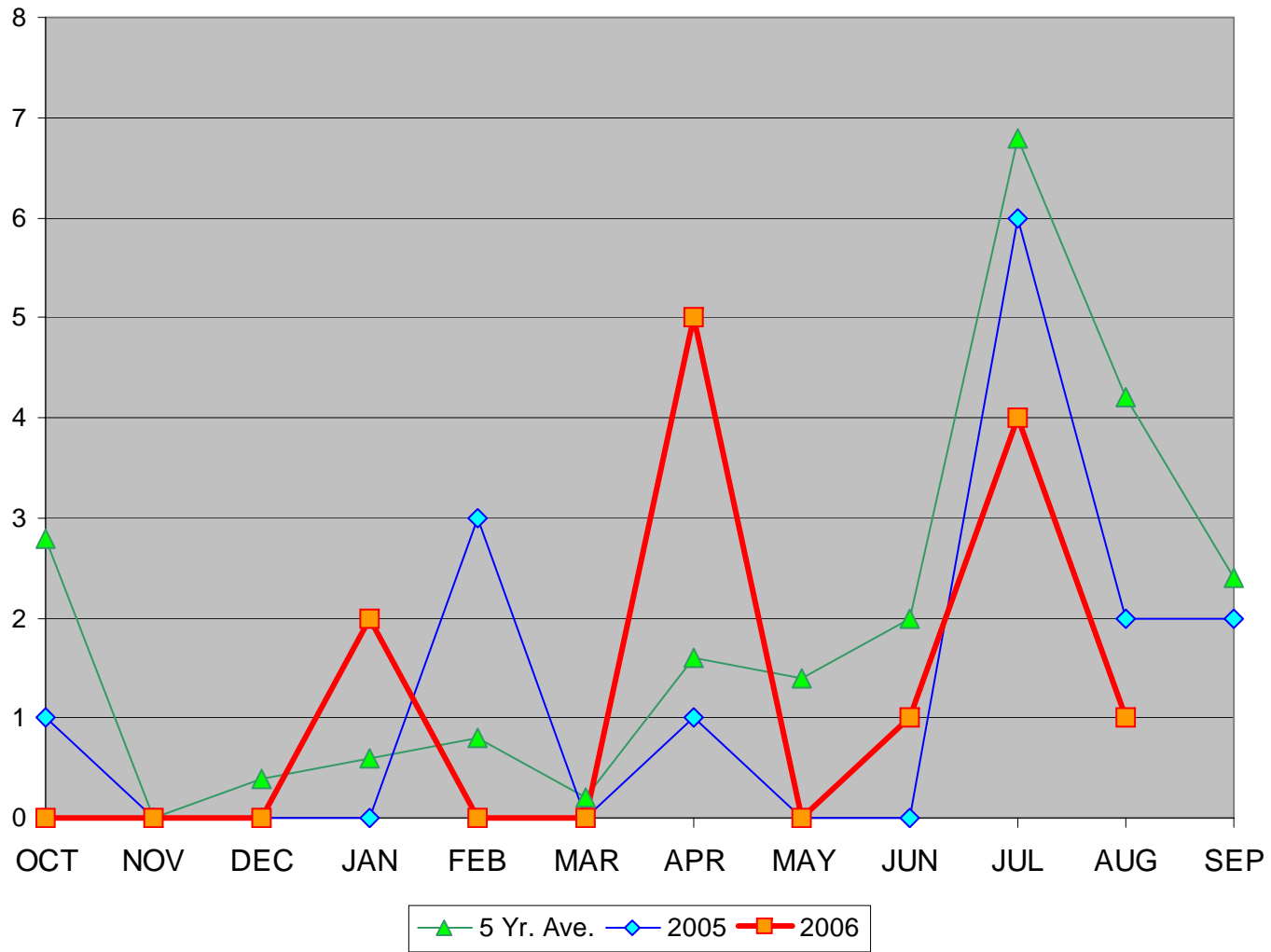
Total Fatal Accidents in Alaska



AAI-240

System Safety Analysis Branch

Total Fatalities in Alaska



AAI-240

System Safety Analysis Branch