

The background of the slide is a dark blue color. It features a pattern of concentric circles and a grid of thin, light blue lines. The circles are centered around the text, and the grid lines are spaced evenly across the page.

Alaska Accident Statistics

October 2002

AAL-240

System Safety Analysis Branch

**FAA ALASKAN REGION
ACCIDENT SUMMARY
CUMULATIVE TOTAL October 2002**

Accident Comparison for the month of October

	2002	2001	October High	October Low	5-YEAR Average
General Aviation (Part 91)	8	3	9	2	5.2
Fatal	0	0	1	0	0.2
Fatalities	0	0	1	0	0.2
Air Carrier (121, 125, 129, 135)	2	3	6	2	3.8
Fatal	0	2	2	0	0.4
Fatalities	0	13	13	0	2.6
Total Accidents	10	6	13	6	9
Fatal	0	2	2	0	0.6
Fatalities	0	13	13	0	2.8

AAL-240

System Safety Analysis Branch

SUMMARY

October 2002

For the month of October, there were eight (8) General Aviation (GA) accidents, compared with 3 in October 2001. The 5-year average for the month of October is 5.2 accidents. There were no fatal GA accidents in October 2002. This is compared with none in October 2001.

For the month of October, there were two (2) Air Carrier accidents, compared with three (3) in October of 2001. The 5-year monthly average for October is 3.8 accidents. There were no fatal Air Carrier accidents for the month, compared with no fatal Air Carrier accidents in October 2001.

There were a total of 10 aircraft accidents in October 2002. This is compared with six (6) in October 2001. The 5-year monthly average for October is 9.

Note: Statistics contained in this report may differ from past reports produced by the Regional Safety Program Manager. This is caused by frequent reclassifications of events by the National Transportation Safety Board.

AAL-240

System Safety Analysis Branch

GENERAL AVIATION TOTAL

Year	JAN	FEB	MAR	APR	MAY	JUN	JUL	AUG	SEP	OCT	NOV	DEC	TOTAL
91	1	5	5	8	8	21	22	25	13	5	5	6	124
92	2	8	9	6	17	10	15	27	25	9	3	4	135
93	2	6	9	4	14	19	20	26	18	13	2	5	138
94	3	5	4	3	8	10	13	23	15	4	2	7	97
95	4	0	8	8	9	26	23	28	17	11	4	4	142
96	2	0	11	18	12	11	13	19	26	5	1	1	119
97	6	5	15	15	11	13	10	16	18	4	0	2	115
98	2	3	8	6	14	21	22	16	23	4	2	2	123
99	2	2	8	9	10	15	17	23	21	2	3	2	114
2000	0	4	3	11	9	17	11	14	18	9	3	5	104
2001	3	4	7	7	5	13	12	25	17	3	0	0	96
2002	1	2	5	2	8	18	11	20	13	8			88
5 Yr. Ave.	1.6	3	6.2	7	9.2	16.8	14.6	19.6	18.4	5.2	1.6	2.2	105
MAX	3	4	8	11	14	21	22	25	23	9	3	5	123
MIN	0	2	3	2	5	13	11	14	13	2	0	0	88

AAL-240

System Safety Analysis Branch

AIR CARRIER TOTAL (FARs 121, 125, 129,135)

Year	JAN	FEB	MAR	APR	MAY	JUN	JUL	AUG	SEP	OCT	NOV	DEC	TOTAL
91	2	3	7	0	1	1	4	6	3	6	0	2	35
92	3	4	2	3	3	5	4	6	3	1	3	1	38
93	2	3	1	3	4	5	4	6	2	1	1	2	34
94	0	1	1	2	1	2	8	8	3	1	4	5	36
95	2	2	4	0	4	4	4	3	2	0	2	3	30
96	0	2	3	2	4	2	5	7	7	1	2	4	39
97	2	2	2	7	1	2	7	6	7	2	2	1	41
98	2	4	0	3	6	6	2	4	8	4	2	3	44
99	3	1	2	7	1	5	2	5	5	6	1	4	42
2000	1	4	4	1	2	2	1	3	4	4	4	2	32
2001	4	0	0	3	2	1	7	3	2	3	0	1	26
2002	2	5	5	1	1	9	6	4	3	2			38
5 Yr. Ave.	2.4	2.8	2.2	3	2.4	4.6	3.6	3.8	4.4	3.8	1.8	2.2	36.4
MAX	4	5	5	7	6	9	7	5	8	6	4	4	44
MIN	1	0	0	1	1	1	1	3	2	2	0	1	26

AAL-240

System Safety Analysis Branch

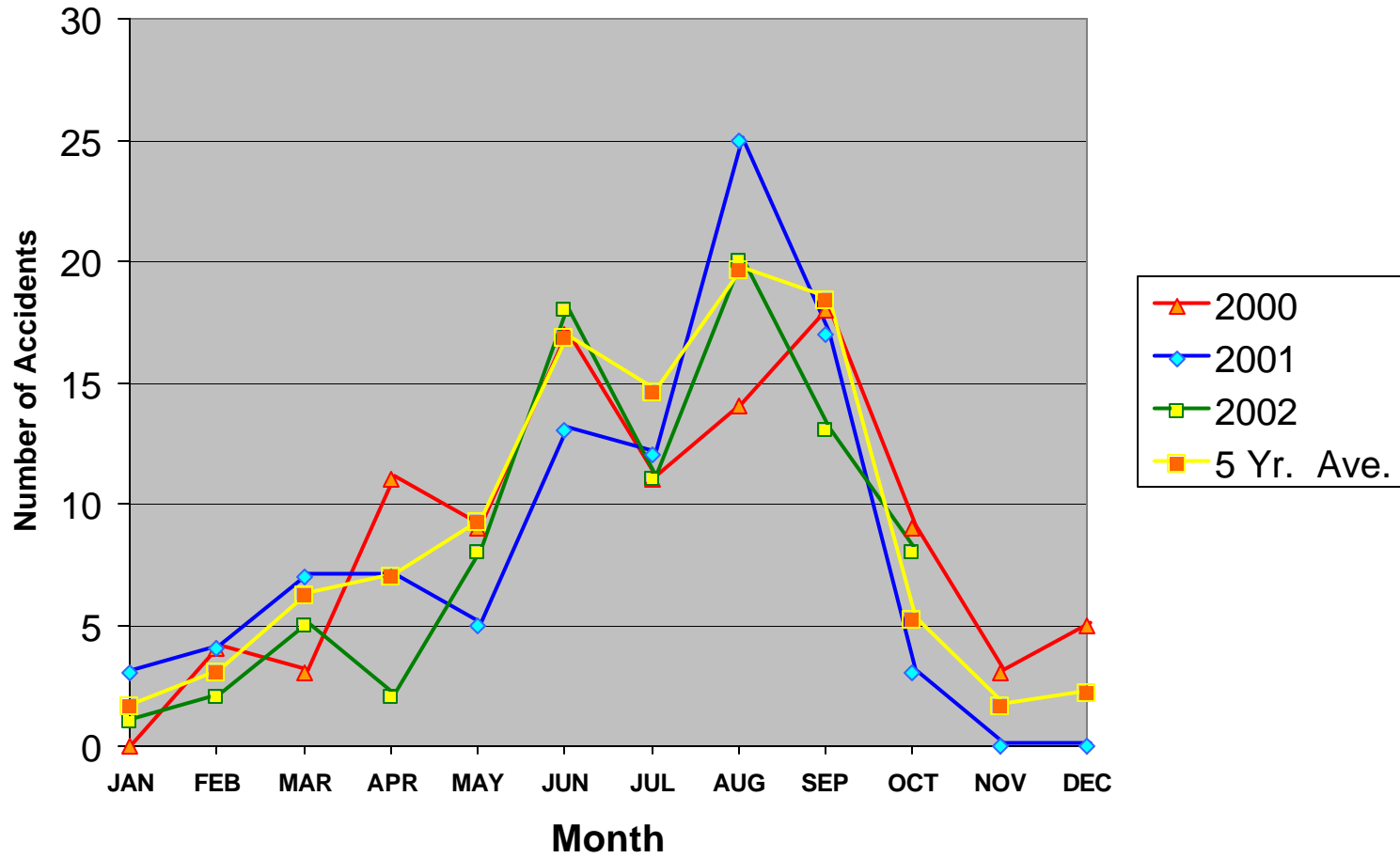
TOTAL ACCIDENTS (GA & Air Carrier)

Year	JAN	FEB	MAR	APR	MAY	JUN	JUL	AUG	SEP	OCT	NOV	DEC	TOTAL
91	3	8	12	8	9	22	26	31	16	11	5	8	159
92	5	12	11	9	20	15	19	33	28	10	6	5	173
93	4	9	10	7	18	24	24	32	20	14	3	7	172
94	3	6	5	5	9	12	21	31	18	5	6	12	133
95	6	2	12	8	13	30	27	31	19	11	6	7	172
96	2	2	14	20	16	13	18	26	33	6	3	5	158
97	8	7	17	22	12	15	17	22	25	6	2	3	156
98	4	7	8	9	20	27	24	20	31	8	4	5	167
99	5	3	10	16	11	20	19	28	26	8	4	6	156
2000	1	8	7	12	11	19	12	17	22	13	7	7	136
2001	7	4	7	10	7	14	19	28	19	6	0	1	122
2002	3	7	10	3	9	27	17	24	16	10			126
5 Yr. Ave.	4	5.8	8.4	10	11.6	21.4	18.2	23.4	22.8	9	3.4	4.4	141.4
MAX	7	8	10	16	20	27	24	28	31	13	7	7	167
MIN	1	3	7	3	7	14	12	17	16	6	0	1	122

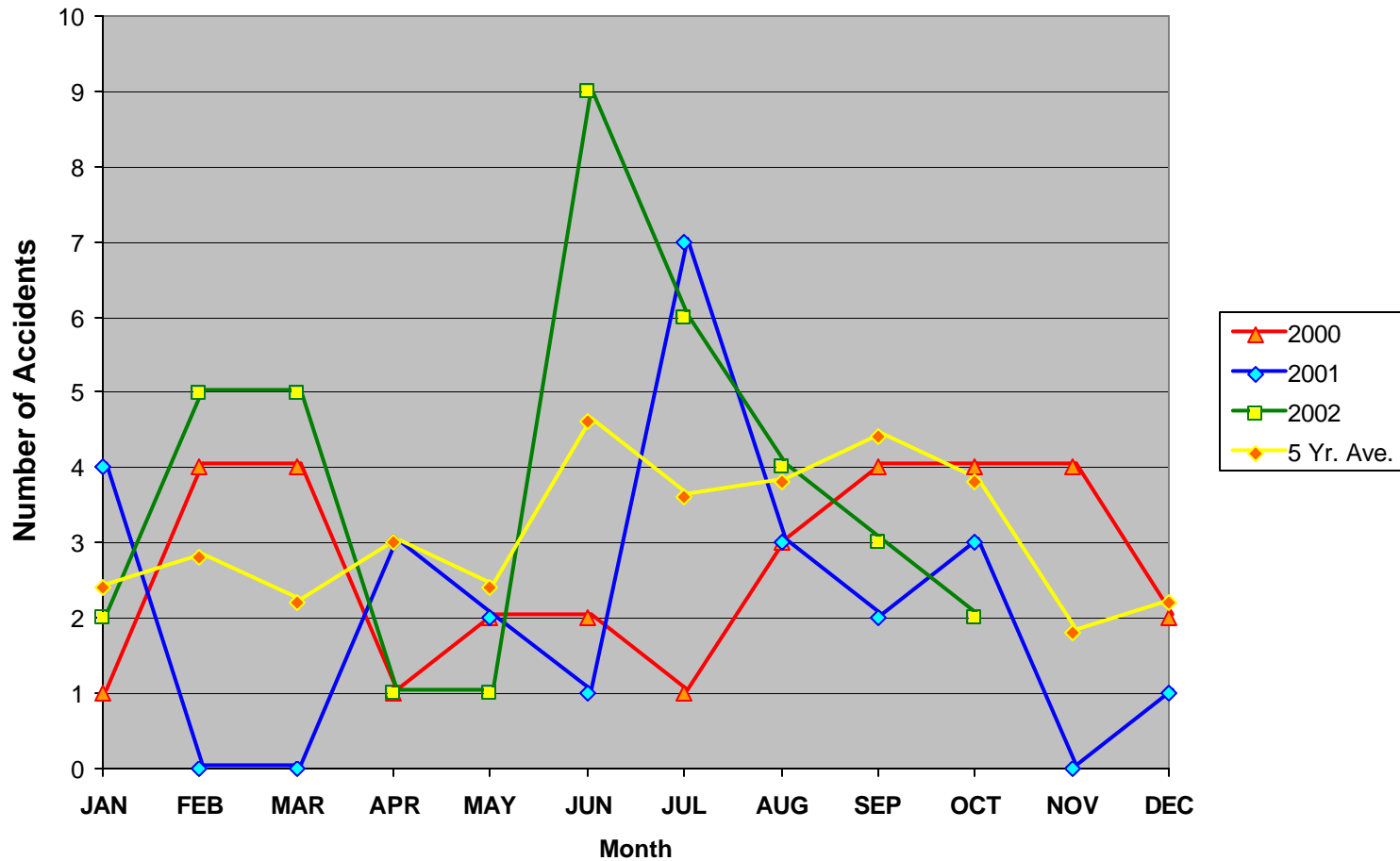
AAL-240

System Safety Analysis Branch

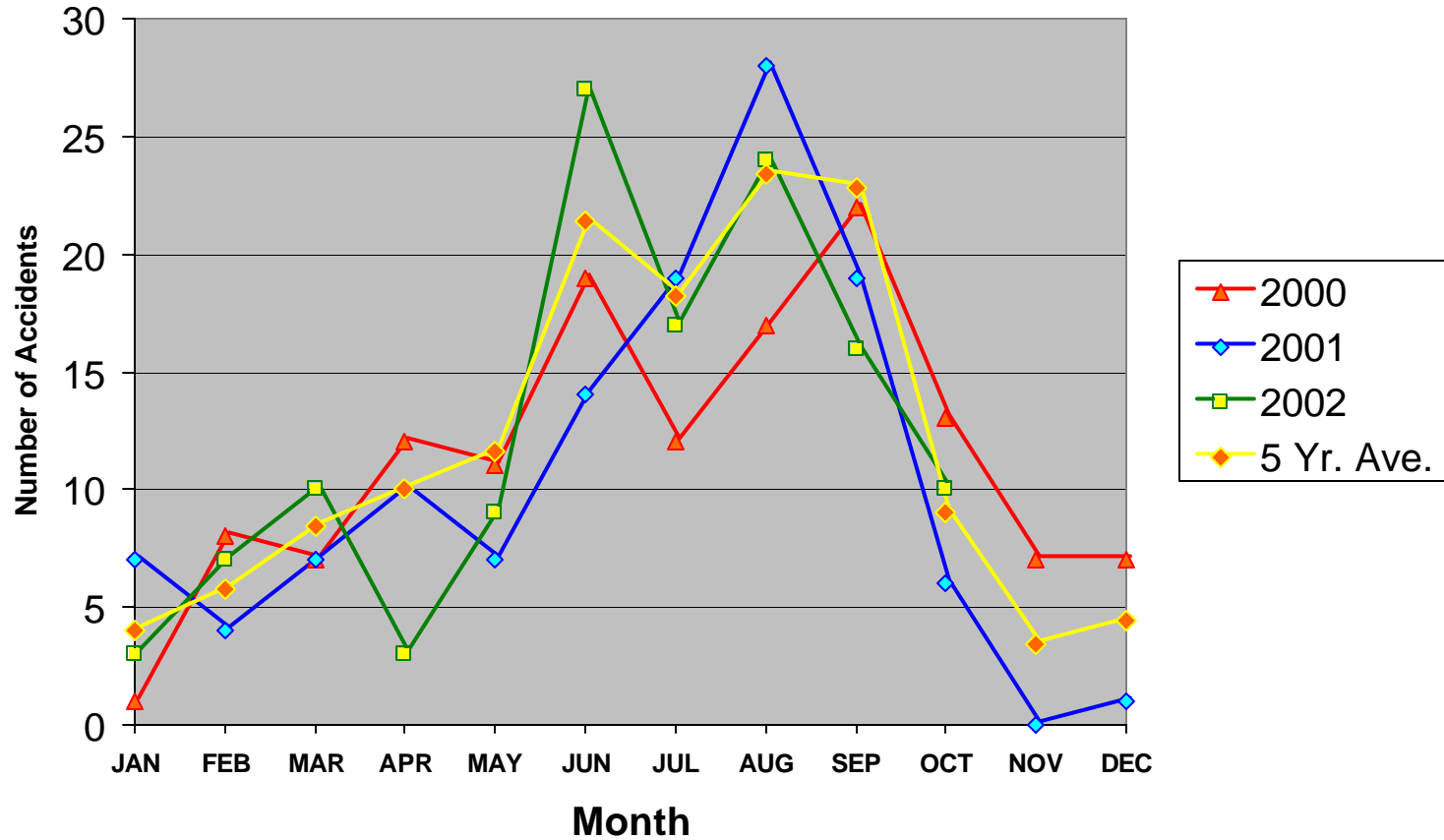
General Aviation Accidents: Monthly Comparison



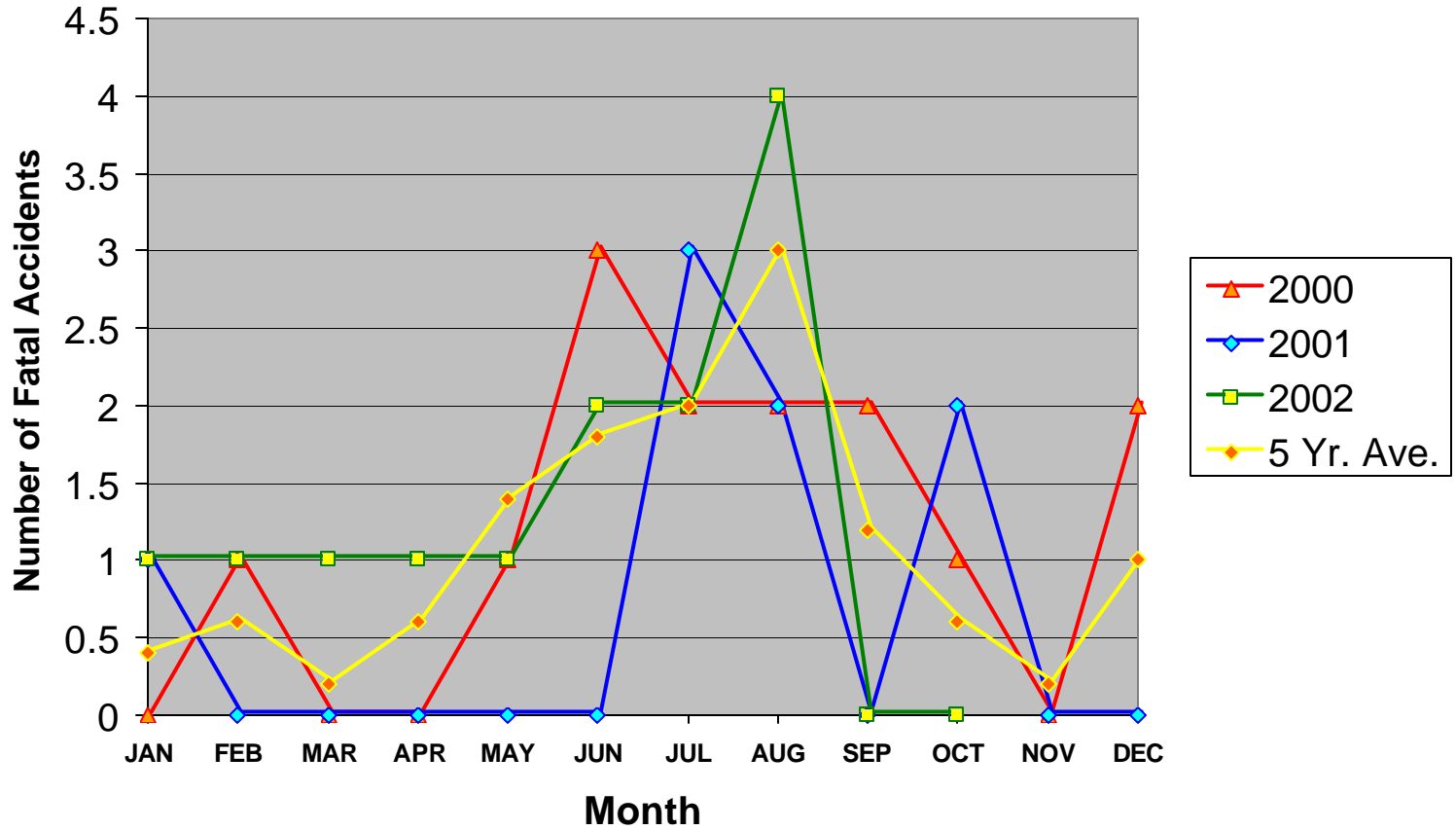
Air Carrier Accidents: Monthly Comparison



Total Accidents (General Aviation & Air Carrier): Monthly Comparison



Total Fatal Accident (General Aviation & Air Carrier): Monthly Comparison



Total Accident Fatalities (General Aviation & Air Carrier): Monthly Comparison

