



Alaska Accident Statistics

November 2003

AAL-240

System Safety Analysis Branch

**FAA ALASKAN REGION
MONTHLY ACCIDENT SUMMARY
November 2003**

Accident Comparison for the month of November

	2003	2002	November High	November Low	5-YEAR Average
General Aviation (Part 91)	5	3	5	0	2.8
Fatal	0	0	0	0	0
Fatalities	0	0	0	0	0
Air Carrier (121, 125, 129, 135)	2	1	4	0	1.6
Fatal	0	0	0	0	0
Fatalities	0	0	0	0	0
Total Accidents	7	4	7	0	4.4
Fatal	0	0	0	0	0
Fatalities	0	0	0	0	0

SUMMARY

November 2003

For the month of November, there were five General Aviation (GA) accidents, compared with three in November 2002. The 5-year average for GA accidents during the month of November is 2.8 accidents. There were no fatal GA accidents in November 2003, compared with none in November 2002.

For the month of November, there were two Air Carrier accidents, compared with one in November of 2002. The 5-year average for Air Carrier accidents during the month of November is 1.6 accidents. There were no fatal Air Carrier accidents for the month of November in 2003 or 2002.

There were a total of seven aircraft accidents during November 2003. This is compared with four in November 2002. The 5-year average for accidents during the month of November is 4.4 accidents. There were no fatal accidents for the month of November in 2003 and 2002.

Note: Statistics contained in this report may differ from past reports produced by the Regional Safety Program Manager. This is caused by frequent reclassifications of events by the National Transportation Safety Board.

GENERAL AVIATION TOTAL

Year	JAN	FEB	MAR	APR	MAY	JUN	JUL	AUG	SEP	OCT	NOV	DEC	TOTAL
92	2	8	9	6	17	10	15	27	25	9	3	4	135
93	2	6	9	4	14	19	20	26	18	13	2	5	138
94	3	5	4	3	8	10	13	23	15	4	2	7	97
95	4	0	8	8	9	26	23	28	17	11	4	4	142
96	2	0	11	18	12	11	13	19	26	5	1	1	119
97	6	5	15	15	11	13	10	16	18	4	0	2	115
98	2	3	8	6	14	21	22	16	23	4	2	2	123
99	2	2	8	9	10	15	17	23	21	2	3	2	114
2000	0	4	3	11	9	17	11	14	18	9	3	5	104
2001	3	4	7	7	5	13	12	25	17	3	0	0	96
2002	1	2	5	2	8	18	11	20	13	8	3	6	97
2003	0	3	7	5	5	10	15	17	19	4	5		90
5 Yr.													
Ave.	1.2	3	6	6.8	7.4	14.6	13.2	19.8	17.6	5.2	2.8	3	100.2
MAX	3	4	8	11	10	18	17	25	21	9	5	6	114
MIN	0	2	3	2	5	10	11	14	13	2	0	0	90

AAL-240

System Safety Analysis Branch

GENERAL AVIATION FATAL

Year	JAN	FEB	MAR	APR	MAY	JUN	JUL	AUG	SEP	OCT	NOV	DEC	TOTAL
92	0	2	0	1	1	1	2	2	1	2	0	0	12
93	1	0	1	2	0	0	4	2	4	2	0	0	16
94	1	1	0	0	0	0	1	3	1	0	0	0	7
95	0	0	0	1	2	3	4	4	2	0	0	0	16
96	0	0	0	1	1	1	3	3	4	1	1	0	15
97	0	2	3	3	0	1	0	1	2	1	0	0	13
98	0	0	0	1	2	1	3	1	1	0	0	0	9
99	0	0	0	0	2	1	0	5	0	0	0	0	8
2000	0	0	0	0	1	2	2	2	0	1	0	1	9
2001	0	0	0	0	0	0	1	2	0	0	0	0	3
2002	0	0	1	1	1	2	1	3	0	0	0	1	10
2003	0	0	0	0	0	1	2	2	1	0	0		6
5 Yr.													
Ave	0	0	0.2	0.2	0.8	1.2	1.2	2.8	0.2	0.2	0	0.4	7.2
MAX	0	0	1	1	2	2	2	5	1	1	0	1	10
MIN	0	0	0	0	0	0	0	2	0	0	0	0	3

AAL-240

System Safety Analysis Branch

GENERAL AVIATION FATALITIES

Year	JAN	FEB	MAR	APR	MAY	JUN	JUL	AUG	SEP	OCT	NOV	DEC	TOTAL
92	0	7	0	2	5	1	6	5	2	5	0	0	33
93	1	0	1	3	0	0	8	4	5	2	0	0	24
94	1	1	0	0	0	0	3	6	1	0	0	0	12
95	0	0	0	2	3	9	8	6	3	0	0	0	31
96	0	0	0	1	2	1	4	4	8	1	2	0	23
97	0	4	6	6	0	4	0	3	3	1	0	0	27
98	0	0	0	1	4	1	5	1	1	0	0	0	13
99	0	0	0	0	3	1	0	11	0	0	0	0	15
2000	0	0	0	0	1	2	2	4	0	1	0	2	12
2001	0	0	0	0	0	0	4	2	0	0	0	0	6
2002	0	0	1	1	2	2	2	5	0	0	0	1	14
2003	0	0	0	0	0	2	9	5	3	0	0		19
5 Yr.													
Ave	0	0	0.2	0.2	1.2	1.4	3.4	5.4	0.6	0.2	0	0.6	13.2
MAX	0	0	1	1	3	2	9	11	3	1	0	2	19
MIN	0	0	0	0	0	0	0	2	0	0	0	0	6

AAL-240

System Safety Analysis Branch

AIR CARRIER TOTAL (FARs 121, 125, 129,135)

Year	JAN	FEB	MAR	APR	MAY	JUN	JUL	AUG	SEP	OCT	NOV	DEC	TOTAL
92	3	4	2	3	3	5	4	6	3	1	3	1	38
93	2	3	1	3	4	5	4	6	2	1	1	2	34
94	0	1	1	2	1	2	8	8	3	1	4	5	36
95	2	2	4	0	4	4	4	3	2	0	2	3	30
96	0	2	3	2	4	2	5	7	7	1	2	4	39
97	2	2	2	7	1	2	7	6	7	2	2	1	41
98	2	4	0	3	6	6	2	4	8	4	2	3	44
99	3	1	2	7	1	5	2	5	5	6	1	4	42
2000	1	4	4	1	2	2	1	3	4	4	4	2	32
2001	4	0	0	3	2	1	7	3	2	3	0	1	26
2002	2	5	5	1	1	9	6	4	3	2	1	0	39
2003	2	2	0	3	2	3	4	3	2	0			21
5 Yr. Ave.	2.4	2.4	2.2	3	1.6	4	4	3.6	3.2	3	1.6	2	32
MAX	4	5	5	7	2	9	7	5	5	6	4	4	42
MIN	1	0	0	1	1	1	1	3	2	0	0	0	21

AAL-240

System Safety Analysis Branch

AIR CARRIER FATAL (FARs 121, 125, 129, 135)

Year	JAN	FEB	MAR	APR	MAY	JUN	JUL	AUG	SEP	OCT	NOV	DEC	TOTAL
92	0	0	0	0	0	0	1	0	1	0	2	0	4
93	0	0	0	2	0	0	0	0	0	1	0	0	3
94	0	0	0	0	0	1	1	3	0	0	1	2	8
95	0	1	0	0	0	1	1	1	0	0	0	0	4
96	0	0	0	0	0	0	2	1	1	1	1	1	7
97	1	0	0	1	0	1	2	1	1	1	1	0	9
98	0	1	0	0	1	0	0	1	2	0	0	0	5
99	0	0	0	1	0	2	0	0	1	0	0	1	5
2000	0	1	0	0	0	1	0	0	2	0	0	1	5
2001	1	0	0	0	0	0	2	0	0	2	0	0	5
2002	1	1	0	0	0	0	1	1	0	0	0	0	4
2003	0	0	0	0	1	1	1	1	0	0	0		4
5 Yr.													
Ave.	0.4	0.4	0	0.2	0.2	0.8	0.8	0.4	0.6	0.4	0	0.4	4.6
MAX	1	1	0	1	1	2	2	1	2	2	0	1	5
MIN	0	0	0	0	0	0	0	0	0	0	0	0	4

AAL-240

System Safety Analysis Branch

AIR CARRIER FATALITIES (FARs 121, 125, 129, 135)

Year	JAN	FEB	MAR	APR	MAY	JUN	JUL	AUG	SEP	OCT	NOV	DEC	TOTAL
92	0	0	0	0	0	0	1	0	3	0	5	0	9
93	0	0	0	4	0	0	0	0	0	1	0	0	5
94	0	0	0	0	0	7	3	12	0	0	1	6	29
95	0	1	0	0	0	4	6	2	0	0	0	0	13
96	0	0	0	0	0	0	5	2	3	3	1	1	15
97	1	0	0	5	0	2	8	1	1	2	8	0	28
98	0	1	0	0	2	0	0	1	6	0	0	0	10
99	0	0	0	1	0	8	0	0	1	0	0	6	16
2000	0	6	0	0	0	4	0	0	6	0	0	2	18
2001	2	0	0	0	0	0	7	0	0	13	0	0	22
2002	1	1	0	0	0	0	4	2	0	0	0	0	8
2003	0	0	0	0	4	3	1	2	0	0	0		10
5 Yr.													
Ave.	0.6	1.4	0	0.2	0.8	3	2.4	0.8	1.4	2.6	0	1.6	14.8
MAX	2	6	0	1	4	8	7	2	6	13	0	6	22
MIN	0	0	0	0	0	0	0	0	0	0	0	0	8

AAL-240

System Safety Analysis Branch

TOTAL ACCIDENTS (GA & Air Carrier)

Year	JAN	FEB	MAR	APR	MAY	JUN	JUL	AUG	SEP	OCT	NOV	DEC	TOTAL
92	5	12	11	9	20	15	19	33	28	10	6	5	173
93	4	9	10	7	18	24	24	32	20	14	3	7	172
94	3	6	5	5	9	12	21	31	18	5	6	12	133
95	6	2	12	8	13	30	27	31	19	11	6	7	172
96	2	2	14	20	16	13	18	26	33	6	3	5	158
97	8	7	17	22	12	15	17	22	25	6	2	3	156
98	4	7	8	9	20	27	24	20	31	8	4	5	167
99	5	3	10	16	11	20	19	28	26	8	4	6	156
2000	1	8	7	12	11	19	12	17	22	13	7	7	136
2001	7	4	7	10	7	14	19	28	19	6	0	1	122
2002	3	7	10	3	9	27	17	24	16	10	4	6	136
2003	2	5	7	8	7	13	19	20	21	4	7		113
5 Yr. Ave.	3.6	5.4	8.2	9.8	9	18.6	17.2	23.4	20.8	8.2	4.4	5	132.6
MAX	7	8	10	16	11	27	19	28	26	13	7	7	156
MIN	1	3	7	3	7	13	12	17	16	4	0	1	113

AAL-240

System Safety Analysis Branch

TOTAL FATAL (GA & Air Carrier)

Year	JAN	FEB	MAR	APR	MAY	JUN	JUL	AUG	SEP	OCT	NOV	DEC	TOTAL
92	0	2	0	1	1	1	3	2	2	2	2	0	16
93	1	0	1	4	0	0	4	2	4	3	0	0	19
94	1	1	0	0	0	1	2	6	1	0	1	2	15
95	0	1	0	1	2	4	5	5	2	0	0	0	20
96	0	0	0	1	1	1	5	4	5	2	2	1	22
97	1	2	3	4	0	2	2	2	3	2	1	0	22
98	0	1	0	1	3	1	3	2	3	0	0	1	14
99	0	0	0	1	2	3	0	5	1	0	0	2	13
2000	0	1	0	0	1	3	2	2	2	1	0	2	14
2001	1	0	0	0	0	0	3	2	0	2	0	0	8
2002	1	1	1	1	1	2	2	4	0	0	0	1	14
2003	0	0	0	0	1	2	3	3	1	0	0		10
5 Yr.													
Ave.	0.4	0.4	0.2	0.4	1	2	2	3.2	0.8	0.6	0	1.2	11.8
MAX	1	1	1	1	2	3	3	5	2	2	0	2	14
MIN	0	0	0	0	0	0	0	2	0	0	0	0	8

AAL-240

System Safety Analysis Branch

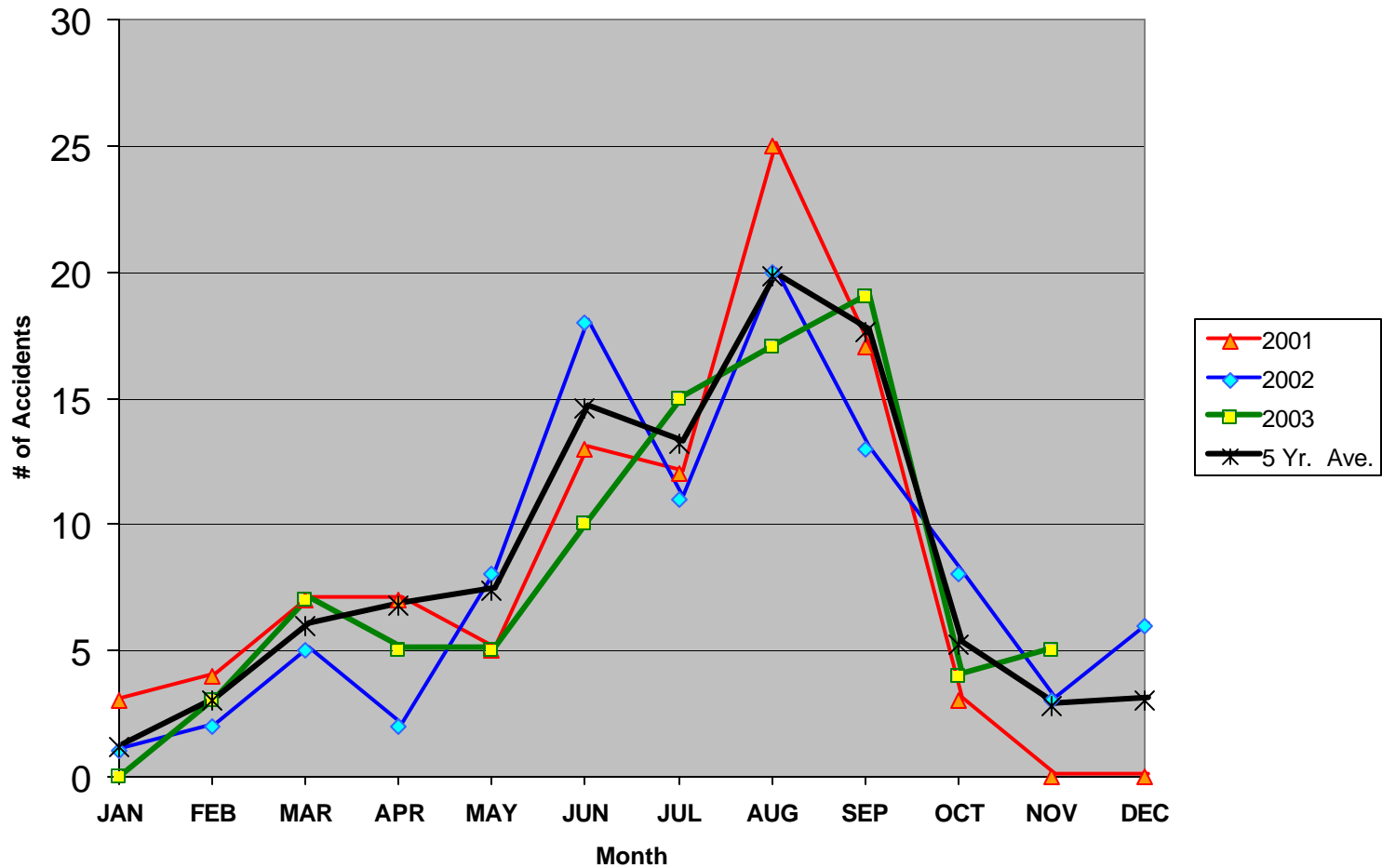
TOTAL FATALITIES (GA & Air Carrier)

Year	JAN	FEB	MAR	APR	MAY	JUN	JUL	AUG	SEP	OCT	NOV	DEC	TOTAL
92	0	7	0	2	5	1	7	5	5	5	5	0	42
93	1	0	1	7	0	0	8	4	5	3	0	0	29
94	1	1	0	0	0	7	6	18	1	0	1	6	41
95	0	1	0	2	3	13	14	8	3	0	0	0	44
96	0	0	0	1	2	1	9	6	11	4	3	1	38
97	1	4	6	11	0	6	8	4	4	3	8	0	55
98	0	1	0	1	6	1	5	2	7	0	0	0	23
99	0	0	0	1	3	9	0	11	1	0	0	6	31
2000	0	6	0	0	1	6	2	4	6	1	0	4	30
2001	2	0	0	0	0	0	11	2	0	13	0	0	28
2002	1	1	1	1	2	2	6	7	0	0	0	1	22
2003	0	0	0	0	4	5	10	7	3	0	0		29
5 Yr.													
Ave.	0.6	1.4	0.2	0.4	2	4.4	5.8	6.2	2	2.8	0	2.2	28
MAX	2	6	1	1	4	9	11	11	6	13	0	6	31
MIN	0	0	0	0	0	0	0	2	0	0	0	0	22

AAL-240

System Safety Analysis Branch

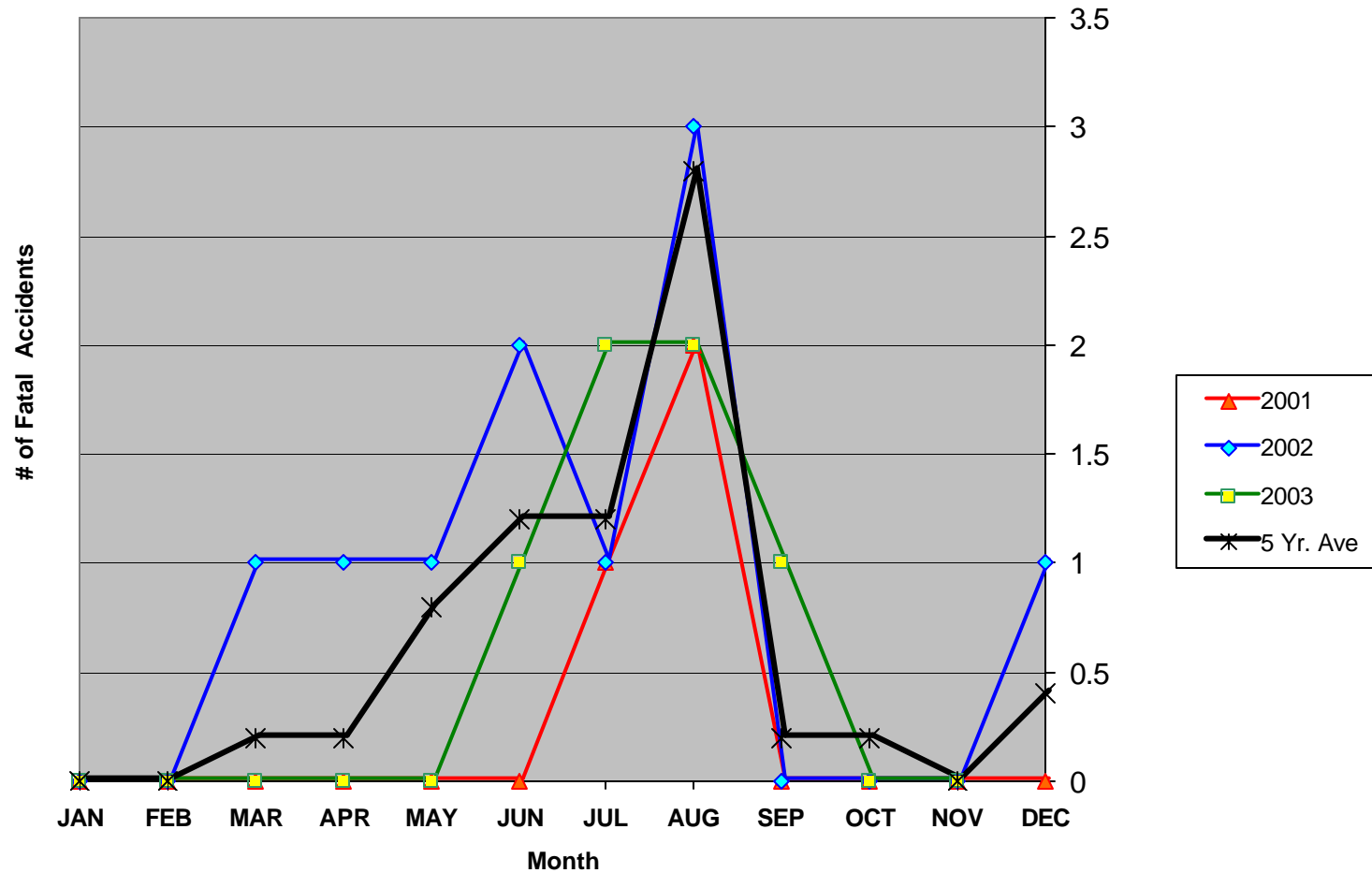
General Aviation Accidents: Monthly Comparison



AAL-240

System Safety Analysis Branch

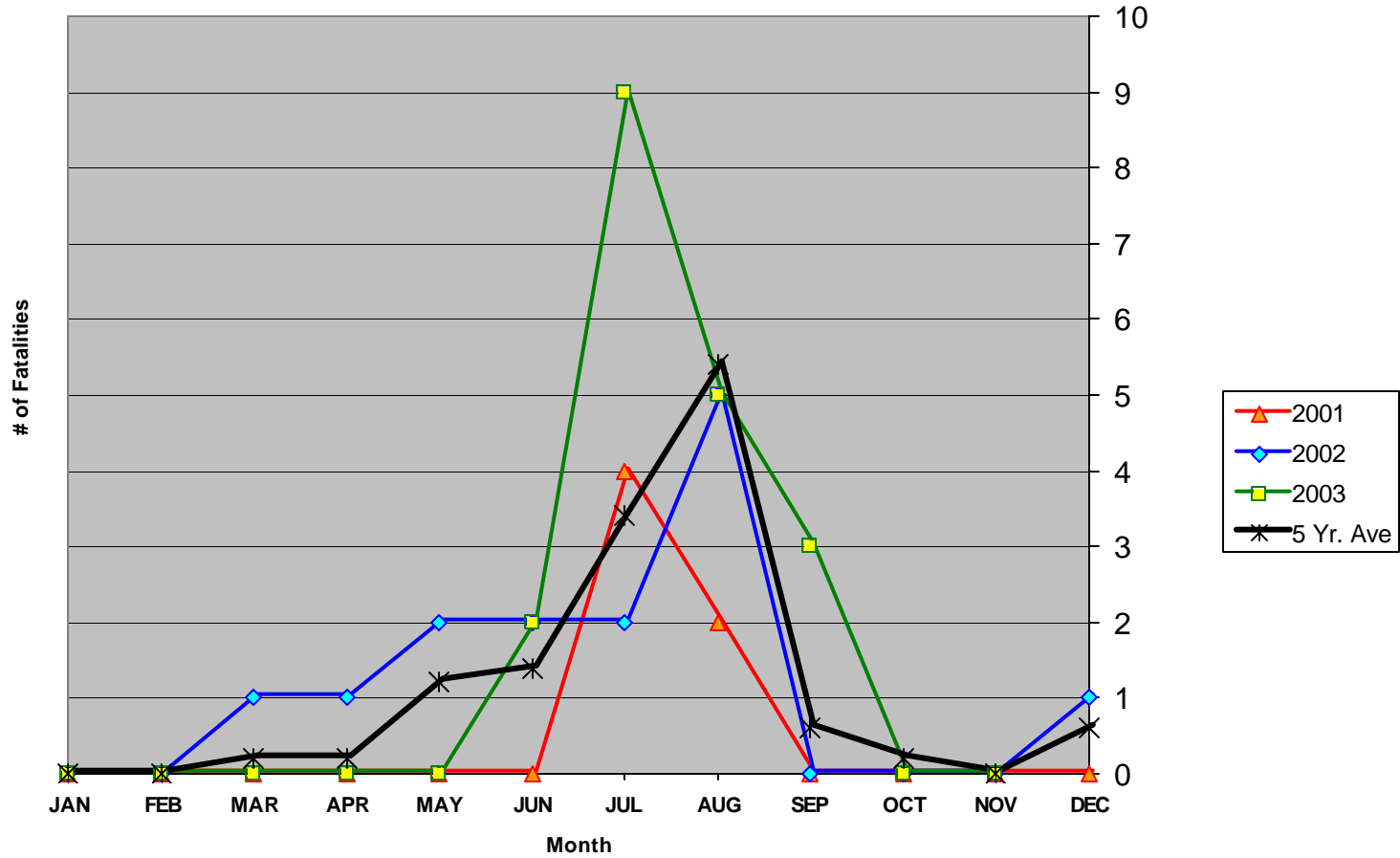
General Aviation Fatal Accidents: Monthly Comparison



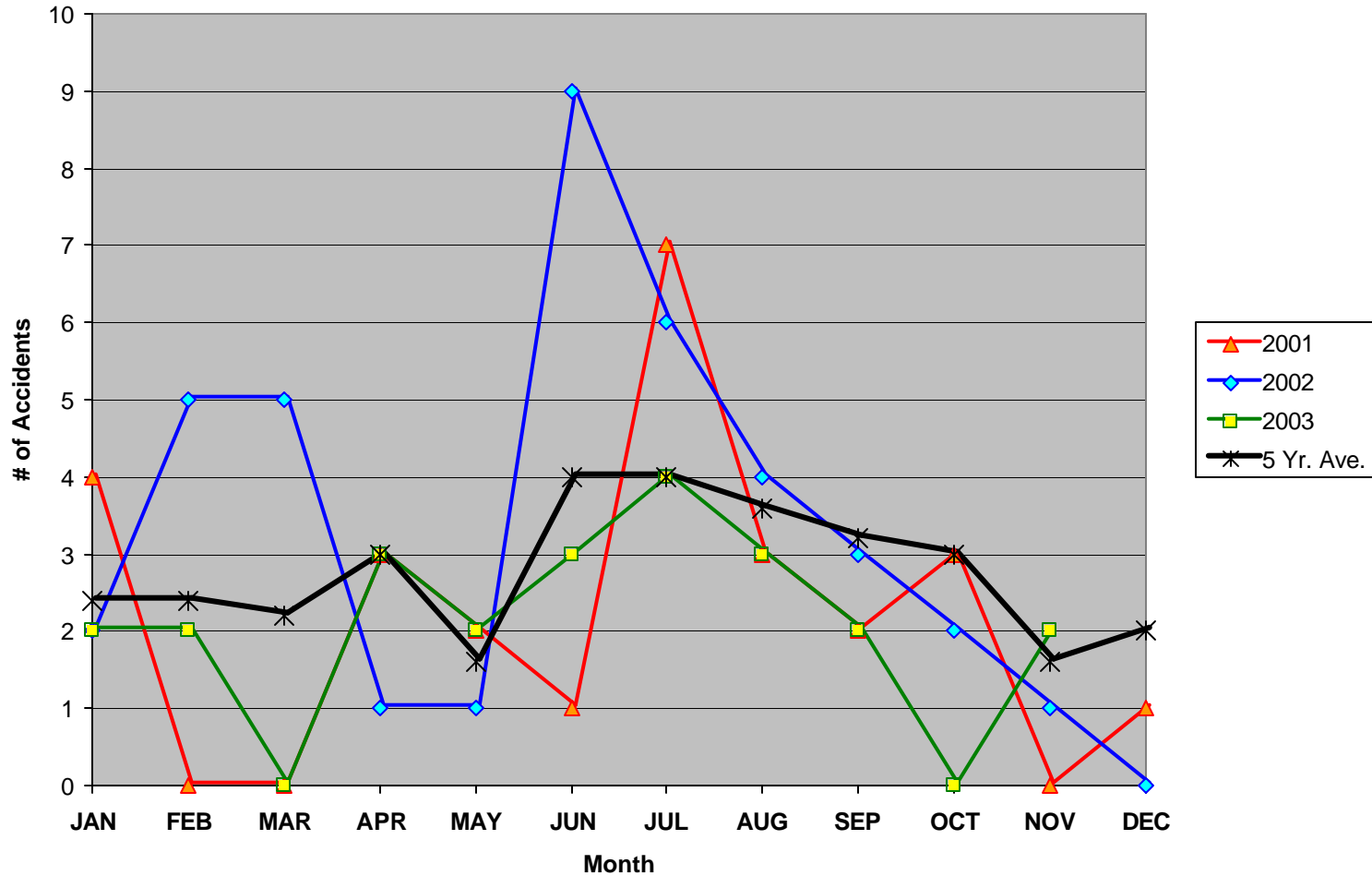
AAL-240

System Safety Analysis Branch

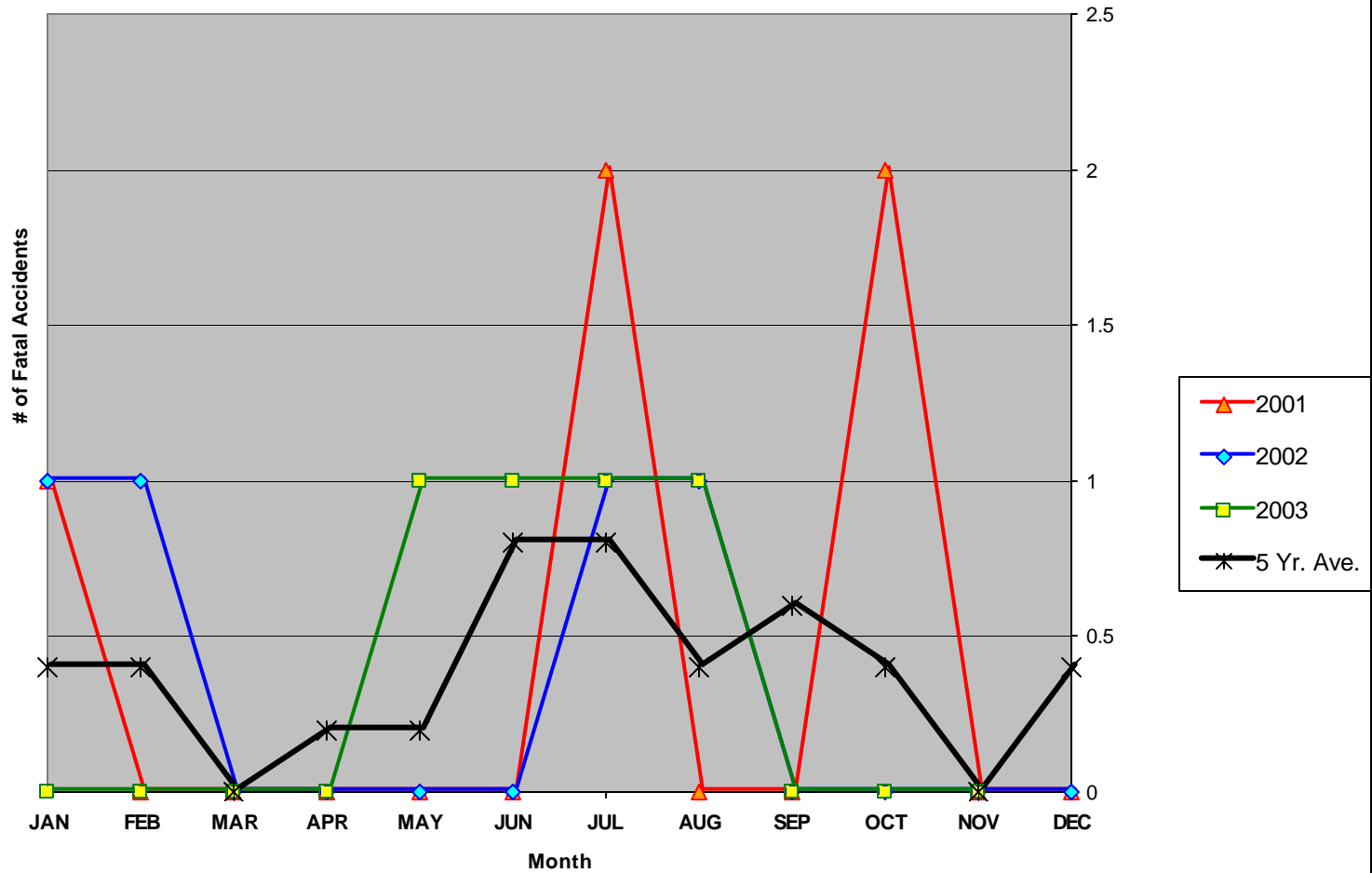
General Aviation Accident Fatalities: Monthly Comparison



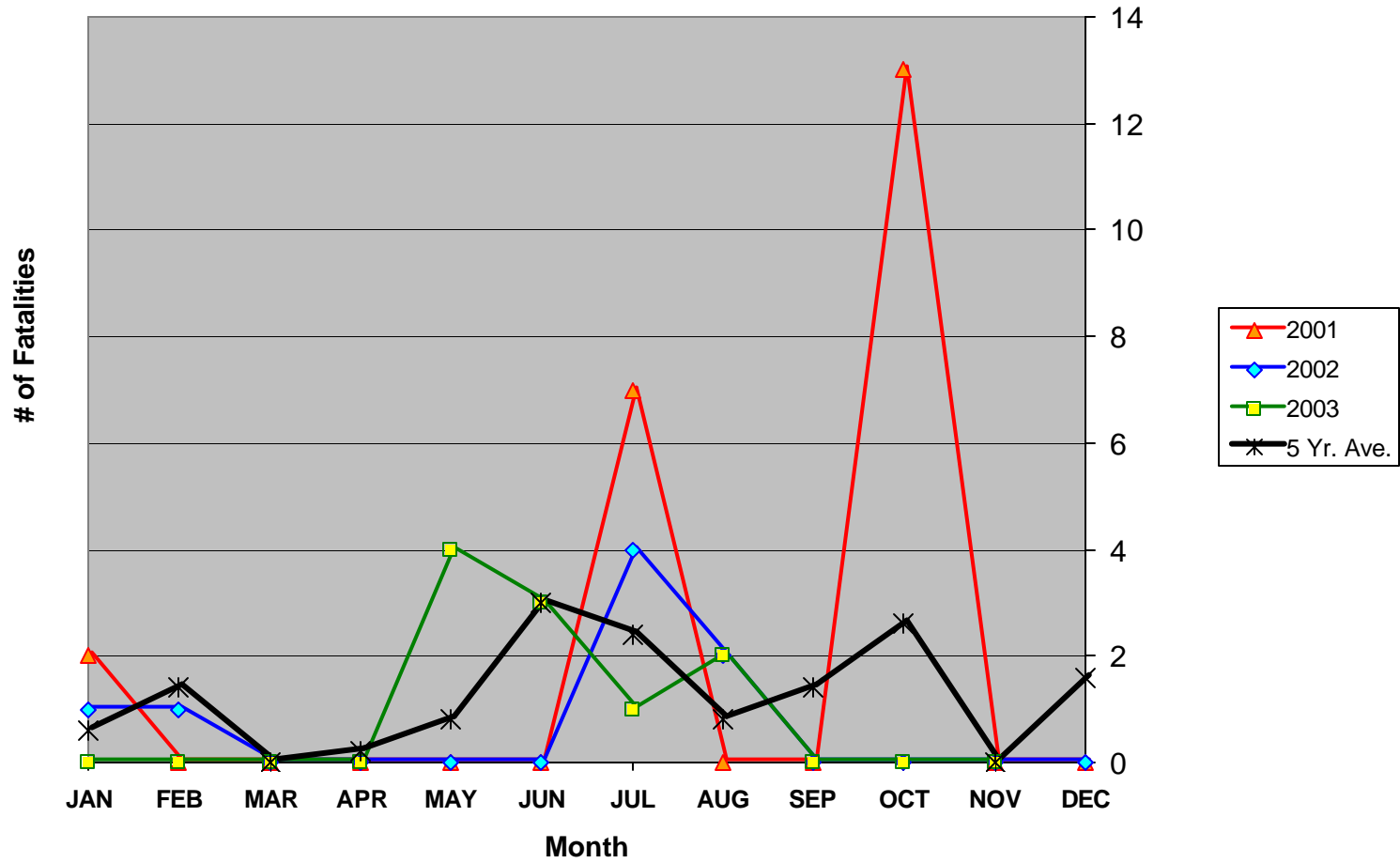
Air Carrier Accidents: Monthly Comparison



Air Carrier Fatal Accidents: Monthly Comparison



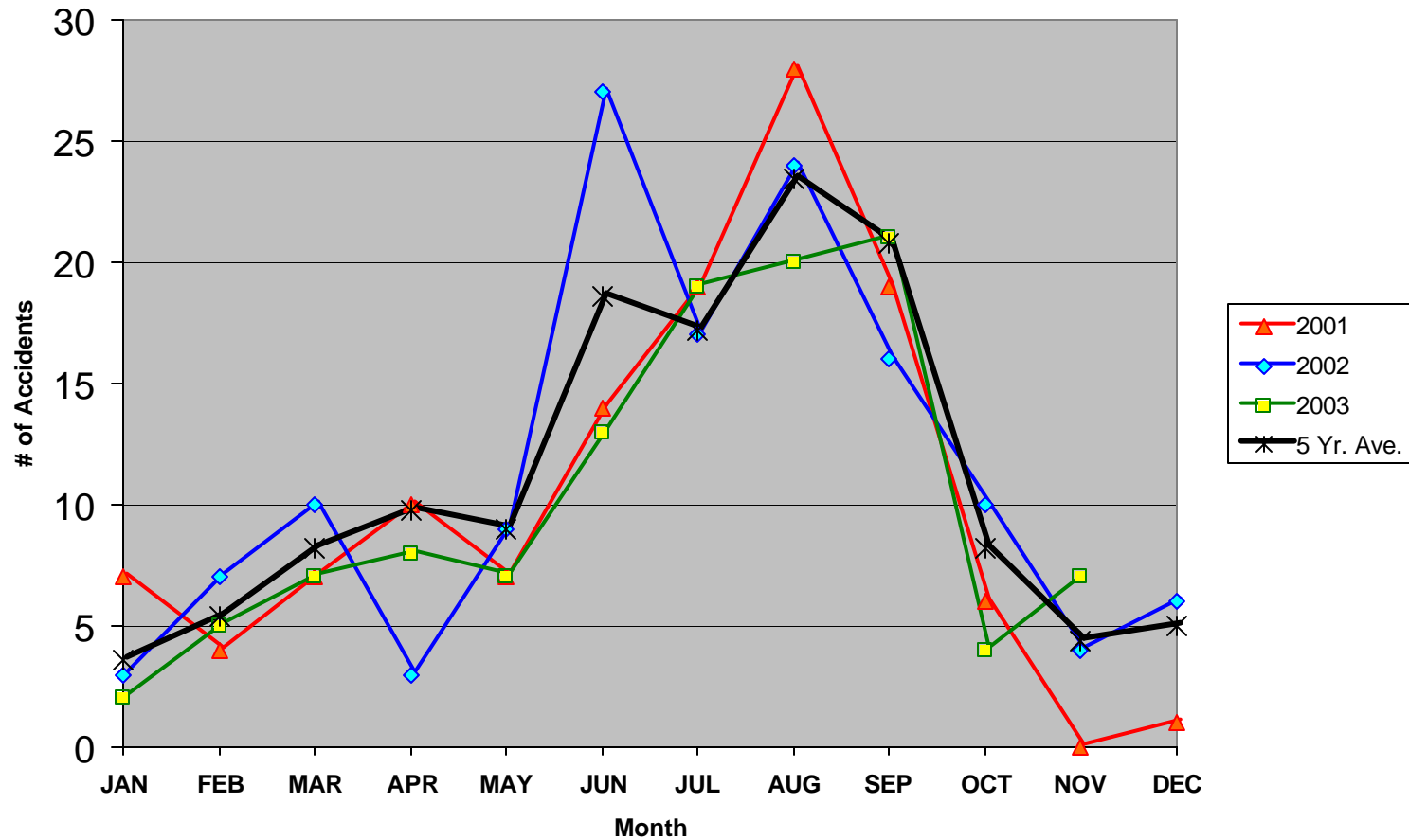
Air Carrier Accident Fatalities: Monthly Comparison



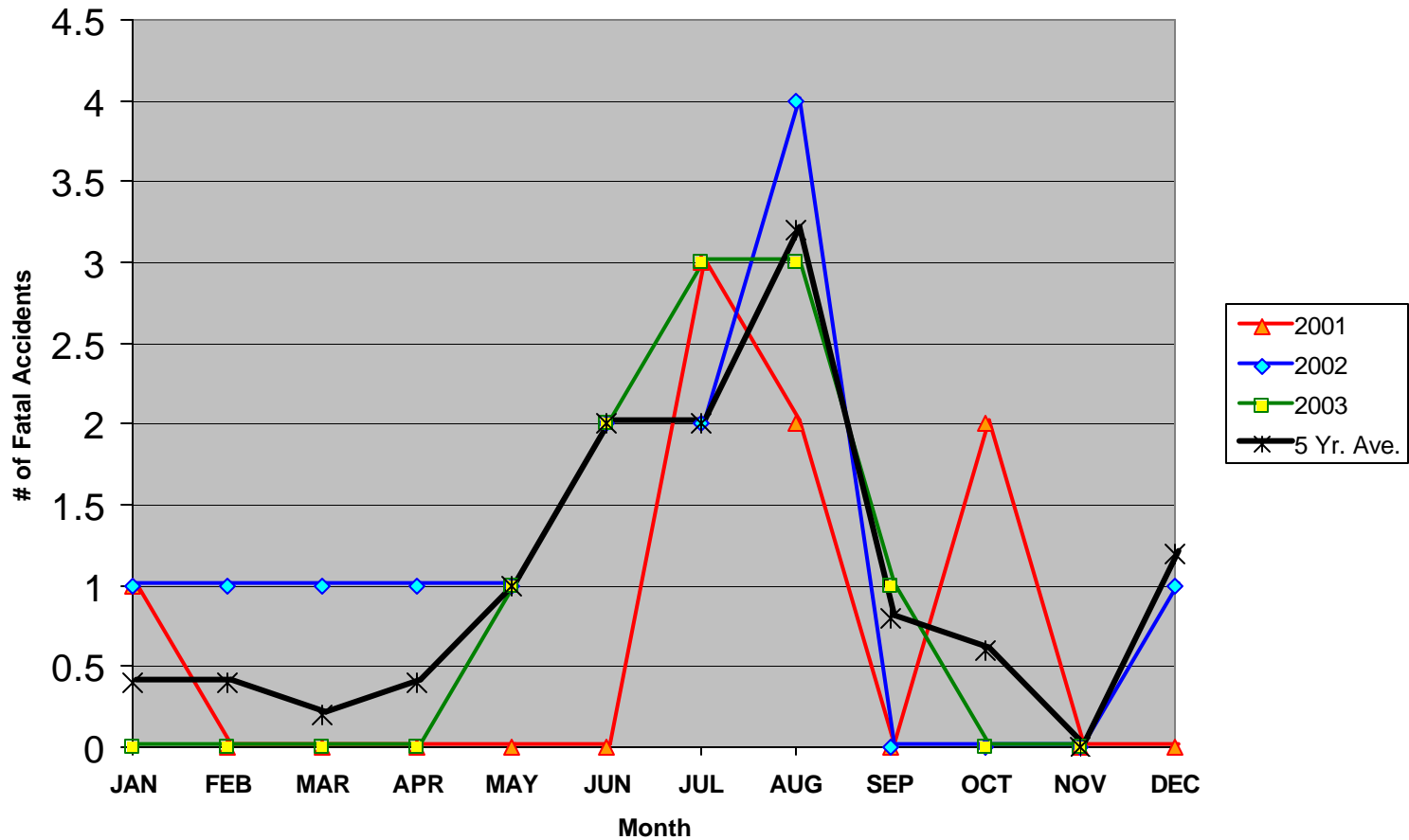
AAL-240

System Safety Analysis Branch

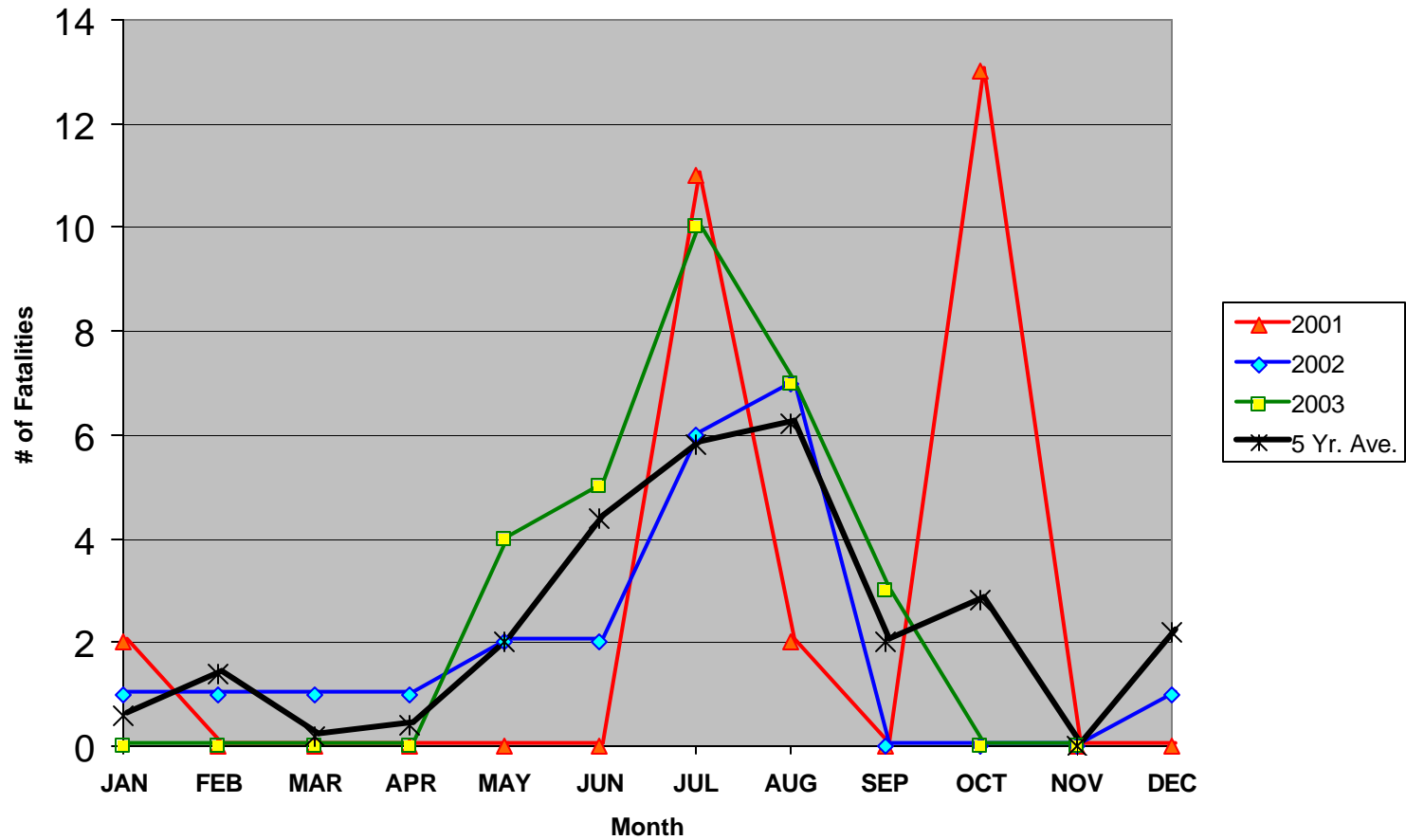
Total Accidents (General Aviation & Air Carrier): Monthly Comparison



Total Fatal Accident (General Aviation & Air Carrier): Monthly Comparison



Total Accident Fatalities (General Aviation & Air Carrier): Monthly Comparison



AAL-240

System Safety Analysis Branch