



# Alaska Accident Statistics

## May 2004

AAL-240

System Safety Analysis Branch

**FAA ALASKAN REGION  
MONTHLY AIRCRAFT ACCIDENT SUMMARY**

May 2004

Accident Comparison for the month of May

|                                                                        | <b>2004</b> | <b>2003</b> | <b>High</b> | <b>May 5-YEAR<br/>Low</b> | <b>Average</b> |
|------------------------------------------------------------------------|-------------|-------------|-------------|---------------------------|----------------|
| <b>General Aviation</b><br>(FAR Parts 91,133,137,125,129 & Public Use) | 7           | 5           | 9           | 5                         | 6.8            |
| Fatal Accidents                                                        | 1           | 0           | 1           | 0                         | 0.6            |
| Fatalities                                                             | 1           | 0           | 2           | 0                         | 0.8            |
| <b>Air Carrier (FAR Part 135)</b>                                      | 2           | 2           | 2           | 1                         | 1.8            |
| Fatal Accidents                                                        | 0           | 1           | 1           | 0                         | 0.2            |
| Fatalities                                                             | 0           | 4           | 4           | 0                         | 0.8            |
| <b>Air Carrier (FAR Part 121)</b>                                      | 1           | 0           | 1           | 0                         | 0.2            |
| Fatal Accidents                                                        | 0           | 0           | 0           | 0                         | 0              |
| Fatalities                                                             | 0           | 0           | 0           | 0                         | 0              |
| <b>Total Accidents</b>                                                 | 10          | 7           | 11          | 7                         | 8.8            |
| Fatal                                                                  | 1           | 1           | 1           | 0                         | 0.8            |
| Fatalities                                                             | 1           | 4           | 4           | 0                         | 1.6            |

This document is for comparison only. Totals frequently change due to reclassification.

## SUMMARY

### May 2004

---

For the month of May, there were seven General Aviation (GA) accidents, compared with five in May 2003. The 5-year average for GA accidents during the month of May is 6.8 events. There was one fatal GA accident in May 2004, resulting in one fatality. There were no fatal GA accidents in May 2003.

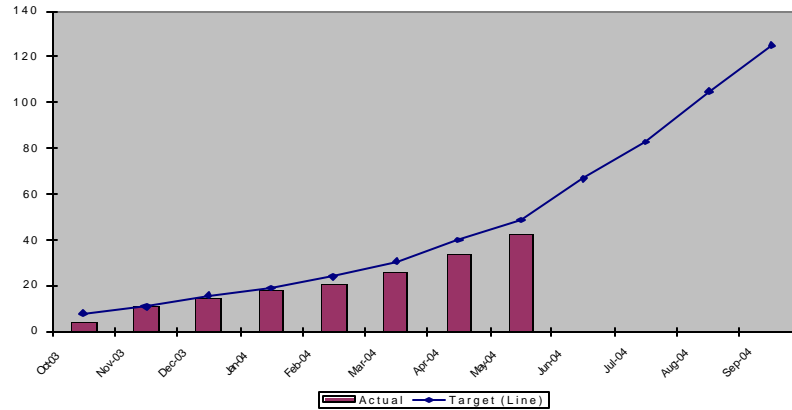
For the month of May, there were two FAR Part 135 Air Carrier accidents, compared with two in May of 2003. The 5-year average for FAR Part 135 Air Carrier accidents during the month of May is 1.8 events. There were no fatal FAR Part 135 Air Carrier accident for the month of May in 2004. There was one fatal FAR Part 135 Air Carrier accident in May 2003, resulting in four fatalities.

There was one FAR Part 121 event currently classified as an accident by the National Transportation Safety Board. A flight attendant on a Northwest Airlines flight broke her wrist. There were no FAR Part 121 accidents for May 2003.

There were a total of ten aircraft accidents during May 2004. This is compared with seven in May 2003. The 5-year average for accidents during the month of May is 8.8 events. There was one fatal accident for the month of May 2004. There was one fatal event in May 2003.

**Note: Statistics contained in this report may differ from past reports produced by the System Safety Analysis Branch. This is caused by frequent reclassifications of events by the National Transportation Safety Board.**

**Status of FAA Performance Targets  
Alaska GA & 135 Accidents  
Fiscal Year to Date  
Cummulative Total**



**Description**

Reduce accidents in Alaska for General Aviation and all Part 135 operations by 20% by Fiscal Year (FY) 2008 ( from the 2000-2002 average of 130 accidents per year to no more than 104 accidents per year). (FY2004 target is no more than 125 accidents)

This chart indicates the monthly total of Alaskan accidents. The graph shows the cumulative number of Alaskan accidents versus the target.

|        | Actual | Target (Line) | Index Range |
|--------|--------|---------------|-------------|
| Oct-03 | 4      | 8             | Green       |
| Nov-03 | 11     | 11            | Yellow      |
| Dec-03 | 15     | 16            | Green       |
| Jan-04 | 18     | 19            | Green       |
| Feb-04 | 21     | 24            | Green       |
| Mar-04 | 26     | 31            | Green       |
| Apr-04 | 34     | 40            | Green       |
| May-04 | 43     | 49            | Green       |
| Jun-04 |        | 67            |             |
| Jul-04 |        | 83            |             |
| Aug-04 |        | 105           |             |
| Sep-04 |        | 125           |             |

## GENERAL AVIATION TOTAL

| Year          | JAN | FEB | MAR | APR | MAY | JUN | JUL  | AUG | SEP  | OCT | NOV | DEC | TOTAL |
|---------------|-----|-----|-----|-----|-----|-----|------|-----|------|-----|-----|-----|-------|
| 94            | 3   | 5   | 4   | 3   | 8   | 10  | 13   | 23  | 15   | 4   | 2   | 7   | 97    |
| 95            | 4   | 0   | 8   | 8   | 9   | 26  | 23   | 28  | 17   | 11  | 4   | 4   | 142   |
| 96            | 2   | 0   | 11  | 18  | 12  | 11  | 13   | 19  | 26   | 5   | 1   | 1   | 119   |
| 97            | 6   | 5   | 15  | 15  | 11  | 13  | 10   | 16  | 18   | 4   | 0   | 2   | 115   |
| 98            | 2   | 3   | 8   | 6   | 14  | 21  | 22   | 16  | 23   | 4   | 2   | 2   | 123   |
| 99            | 2   | 2   | 8   | 9   | 10  | 15  | 17   | 23  | 21   | 2   | 3   | 2   | 114   |
| 2000          | 0   | 4   | 3   | 11  | 9   | 17  | 11   | 14  | 18   | 9   | 3   | 6   | 105   |
| 2001          | 2   | 4   | 7   | 7   | 5   | 14  | 12   | 26  | 17   | 3   | 0   | 0   | 97    |
| 2002          | 1   | 2   | 5   | 2   | 8   | 19  | 12   | 20  | 13   | 8   | 3   | 6   | 99    |
| 2003          | 0   | 3   | 7   | 5   | 5   | 10  | 15   | 17  | 20   | 4   | 5   | 3   | 94    |
| 2004          | 2   | 2   | 4   | 6   | 7   |     |      |     |      |     |     |     | 21    |
| 5 Yr.<br>Ave. | 1   | 3   | 5.2 | 6.2 | 6.8 | 15  | 13.4 | 20  | 17.8 | 5.2 | 2.8 | 3.4 | 101.8 |
| MAX           | 2   | 4   | 7   | 11  | 9   | 19  | 17   | 26  | 21   | 9   | 5   | 6   | 114   |
| MIN           | 0   | 2   | 3   | 2   | 5   | 10  | 11   | 14  | 13   | 2   | 0   | 0   | 94    |

AAL-240

System Safety Analysis Branch

## GENERAL AVIATION FATAL ACCIDENTS

| Year         | JAN | FEB | MAR | APR | MAY | JUN | JUL | AUG | SEP | OCT | NOV | DEC | TOTAL |
|--------------|-----|-----|-----|-----|-----|-----|-----|-----|-----|-----|-----|-----|-------|
| 94           | 1   | 1   | 0   | 0   | 0   | 1   | 0   | 3   | 2   | 0   | 0   | 0   | 8     |
| 95           | 0   | 0   | 0   | 1   | 2   | 3   | 4   | 4   | 2   | 0   | 0   | 0   | 16    |
| 96           | 0   | 0   | 0   | 1   | 1   | 1   | 2   | 3   | 4   | 1   | 0   | 0   | 13    |
| 97           | 0   | 2   | 3   | 3   | 0   | 1   | 0   | 1   | 2   | 1   | 0   | 0   | 13    |
| 98           | 0   | 0   | 0   | 1   | 2   | 1   | 3   | 1   | 1   | 0   | 0   | 0   | 9     |
| 99           | 0   | 0   | 0   | 0   | 2   | 1   | 0   | 5   | 0   | 0   | 0   | 0   | 8     |
| 2000         | 0   | 0   | 0   | 0   | 1   | 2   | 2   | 2   | 0   | 1   | 0   | 2   | 10    |
| 2001         | 0   | 0   | 0   | 0   | 0   | 0   | 1   | 2   | 0   | 0   | 0   | 0   | 3     |
| 2002         | 0   | 0   | 1   | 1   | 1   | 2   | 1   | 3   | 0   | 0   | 0   | 1   | 10    |
| 2003         | 0   | 0   | 0   | 0   | 0   | 1   | 2   | 2   | 1   | 0   | 0   | 0   | 6     |
| 2004         | 0   | 0   | 0   | 0   | 1   |     |     |     |     |     |     |     | 1     |
| 5 Yr.<br>Ave | 0   | 0   | 0.2 | 0.2 | 0.6 | 1.2 | 1.2 | 2.8 | 0.2 | 0.2 | 0   | 0.6 | 7.4   |
| MAX          | 0   | 0   | 1   | 1   | 1   | 2   | 2   | 5   | 1   | 1   | 0   | 2   | 10    |
| MIN          | 0   | 0   | 0   | 0   | 0   | 0   | 0   | 2   | 0   | 0   | 0   | 0   | 3     |

AAL-240

System Safety Analysis Branch

## GENERAL AVIATION FATALITIES

| Year                 | JAN      | FEB      | MAR        | APR        | MAY        | JUN        | JUL        | AUG        | SEP        | OCT        | NOV      | DEC      | TOTAL       |
|----------------------|----------|----------|------------|------------|------------|------------|------------|------------|------------|------------|----------|----------|-------------|
| 94                   | 1        | 1        | 0          | 0          | 0          | 3          | 0          | 6          | 3          | 0          | 0        | 0        | 14          |
| 95                   | 0        | 0        | 0          | 2          | 3          | 14         | 9          | 6          | 3          | 0          | 0        | 0        | 37          |
| 96                   | 0        | 0        | 0          | 1          | 2          | 1          | 3          | 4          | 8          | 1          | 0        | 0        | 20          |
| 97                   | 0        | 4        | 6          | 6          | 0          | 4          | 0          | 3          | 3          | 1          | 0        | 0        | 27          |
| 98                   | 0        | 0        | 0          | 1          | 4          | 1          | 5          | 1          | 1          | 0          | 0        | 0        | 13          |
| 99                   | 0        | 0        | 0          | 0          | 3          | 1          | 0          | 11         | 0          | 0          | 0        | 0        | 15          |
| <b>2000</b>          | <b>0</b> | <b>0</b> | <b>0</b>   | <b>0</b>   | <b>1</b>   | <b>2</b>   | <b>2</b>   | <b>4</b>   | <b>0</b>   | <b>1</b>   | <b>0</b> | <b>4</b> | <b>14</b>   |
| <b>2001</b>          | <b>0</b> | <b>0</b> | <b>0</b>   | <b>0</b>   | <b>0</b>   | <b>0</b>   | <b>4</b>   | <b>2</b>   | <b>0</b>   | <b>0</b>   | <b>0</b> | <b>0</b> | <b>6</b>    |
| <b>2002</b>          | <b>0</b> | <b>0</b> | <b>1</b>   | <b>1</b>   | <b>2</b>   | <b>2</b>   | <b>2</b>   | <b>5</b>   | <b>0</b>   | <b>0</b>   | <b>0</b> | <b>1</b> | <b>14</b>   |
| <b>2003</b>          | <b>0</b> | <b>0</b> | <b>0</b>   | <b>0</b>   | <b>0</b>   | <b>2</b>   | <b>9</b>   | <b>5</b>   | <b>3</b>   | <b>0</b>   | <b>0</b> | <b>0</b> | <b>19</b>   |
| <b>2004</b>          | <b>0</b> | <b>0</b> | <b>0</b>   | <b>0</b>   | <b>1</b>   |            |            |            |            |            |          |          | <b>1</b>    |
| <b>5 Yr.<br/>Ave</b> | <b>0</b> | <b>0</b> | <b>0.2</b> | <b>0.2</b> | <b>0.8</b> | <b>1.4</b> | <b>3.4</b> | <b>5.4</b> | <b>0.6</b> | <b>0.2</b> | <b>0</b> | <b>1</b> | <b>13.6</b> |
| <b>MAX</b>           | <b>0</b> | <b>0</b> | <b>1</b>   | <b>1</b>   | <b>2</b>   | <b>2</b>   | <b>9</b>   | <b>11</b>  | <b>3</b>   | <b>1</b>   | <b>0</b> | <b>4</b> | <b>19</b>   |
| <b>MIN</b>           | <b>0</b> | <b>0</b> | <b>0</b>   | <b>0</b>   | <b>0</b>   | <b>0</b>   | <b>0</b>   | <b>2</b>   | <b>0</b>   | <b>0</b>   | <b>0</b> | <b>0</b> | <b>6</b>    |

**AAL-240**

**System Safety Analysis Branch**

## AIR CARRIER TOTAL (FAR 135)

| Year          | JAN | FEB | MAR | APR | MAY | JUN | JUL | AUG | SEP | OCT | NOV | DEC | TOTAL |
|---------------|-----|-----|-----|-----|-----|-----|-----|-----|-----|-----|-----|-----|-------|
| 94            | 0   | 1   | 1   | 2   | 1   | 2   | 8   | 8   | 3   | 1   | 3   | 4   | 34    |
| 95            | 2   | 2   | 4   | 0   | 4   | 3   | 4   | 3   | 2   | 0   | 2   | 3   | 29    |
| 96            | 0   | 0   | 3   | 2   | 3   | 2   | 4   | 7   | 7   | 1   | 2   | 3   | 34    |
| 97            | 2   | 2   | 2   | 6   | 1   | 2   | 7   | 5   | 7   | 2   | 2   | 1   | 39    |
| 98            | 1   | 4   | 0   | 3   | 6   | 5   | 2   | 3   | 8   | 4   | 0   | 3   | 39    |
| 99            | 3   | 1   | 2   | 7   | 0   | 5   | 1   | 3   | 5   | 6   | 1   | 4   | 38    |
| 2000          | 1   | 4   | 4   | 1   | 2   | 2   | 1   | 3   | 4   | 2   | 3   | 1   | 28    |
| 2001          | 4   | 0   | 0   | 3   | 2   | 1   | 6   | 3   | 1   | 3   | 0   | 0   | 23    |
| 2002          | 1   | 4   | 3   | 1   | 1   | 8   | 4   | 8   | 3   | 2   | 1   | 0   | 36    |
| 2003          | 1   | 1   | 0   | 2   | 2   | 3   | 4   | 3   | 2   | 0   | 2   | 1   | 21    |
| 2004          | 1   | 1   | 1   | 2   | 2   |     |     |     |     |     |     |     | 7     |
| 5 Yr.<br>Ave. | 1.6 | 2   | 1.6 | 1.8 | 1.8 | 3.8 | 3.2 | 4   | 3   | 2.6 | 1.4 | 1.2 | 29.2  |
| MAX           | 4   | 4   | 4   | 3   | 2   | 8   | 6   | 8   | 5   | 6   | 3   | 4   | 38    |
| MIN           | 1   | 0   | 0   | 1   | 1   | 1   | 1   | 3   | 1   | 0   | 0   | 0   | 21    |

AAL-240

System Safety Analysis Branch



## AIR CARRIER FATAL ACCIDENTS (FAR 135)

| Year          | JAN | FEB | MAR | APR | MAY | JUN | JUL | AUG | SEP | OCT | NOV | DEC | TOTAL |
|---------------|-----|-----|-----|-----|-----|-----|-----|-----|-----|-----|-----|-----|-------|
| 94            | 0   | 0   | 0   | 0   | 0   | 1   | 1   | 3   | 0   | 0   | 1   | 2   | 8     |
| 95            | 0   | 1   | 0   | 0   | 0   | 1   | 1   | 1   | 0   | 0   | 0   | 0   | 4     |
| 96            | 0   | 0   | 0   | 0   | 0   | 0   | 1   | 1   | 1   | 1   | 2   | 1   | 7     |
| 97            | 1   | 0   | 0   | 1   | 0   | 1   | 2   | 1   | 1   | 1   | 1   | 0   | 9     |
| 98            | 0   | 1   | 0   | 0   | 1   | 0   | 0   | 1   | 2   | 0   | 0   | 0   | 5     |
| 99            | 0   | 0   | 0   | 1   | 0   | 2   | 0   | 0   | 1   | 0   | 0   | 1   | 5     |
| 2000          | 0   | 1   | 0   | 0   | 0   | 1   | 0   | 0   | 2   | 0   | 0   | 0   | 4     |
| 2001          | 1   | 0   | 0   | 0   | 0   | 0   | 2   | 0   | 0   | 2   | 0   | 0   | 5     |
| 2002          | 1   | 1   | 0   | 0   | 0   | 0   | 1   | 1   | 0   | 0   | 0   | 0   | 4     |
| 2003          | 0   | 0   | 0   | 0   | 1   | 1   | 1   | 1   | 0   | 0   | 0   | 0   | 4     |
| 2004          | 0   | 0   | 0   | 1   | 0   |     |     |     |     |     |     |     | 1     |
| 5 Yr.<br>Ave. | 0.4 | 0.4 | 0   | 0.2 | 0.2 | 0.8 | 0.8 | 0.4 | 0.6 | 0.4 | 0   | 0.2 | 4.4   |
| MAX           | 1   | 1   | 0   | 1   | 1   | 2   | 2   | 1   | 2   | 2   | 0   | 1   | 5     |
| MIN           | 0   | 0   | 0   | 0   | 0   | 0   | 0   | 0   | 0   | 0   | 0   | 0   | 4     |

**AAL-240**

**System Safety Analysis Branch**

## AIR CARRIER FATALITIES (FAR 135)

| Year          | JAN | FEB | MAR | APR | MAY | JUN | JUL | AUG | SEP | OCT | NOV | DEC | TOTAL |
|---------------|-----|-----|-----|-----|-----|-----|-----|-----|-----|-----|-----|-----|-------|
| 94            | 0   | 0   | 0   | 0   | 0   | 7   | 3   | 12  | 0   | 0   | 1   | 6   | 29    |
| 95            | 0   | 1   | 0   | 0   | 0   | 4   | 6   | 2   | 0   | 0   | 0   | 0   | 13    |
| 96            | 0   | 0   | 0   | 0   | 0   | 0   | 1   | 2   | 3   | 3   | 3   | 1   | 13    |
| 97            | 1   | 0   | 0   | 5   | 0   | 2   | 8   | 1   | 1   | 2   | 8   | 0   | 28    |
| 98            | 0   | 1   | 0   | 0   | 2   | 0   | 0   | 1   | 6   | 0   | 0   | 0   | 10    |
| 99            | 0   | 0   | 0   | 1   | 0   | 8   | 0   | 0   | 1   | 0   | 0   | 6   | 16    |
| 2000          | 0   | 6   | 0   | 0   | 0   | 4   | 0   | 0   | 6   | 0   | 0   | 2   | 18    |
| 2001          | 2   | 0   | 0   | 0   | 0   | 0   | 7   | 0   | 0   | 13  | 0   | 0   | 22    |
| 2002          | 1   | 1   | 0   | 0   | 0   | 0   | 4   | 2   | 0   | 0   | 0   | 0   | 8     |
| 2003          | 0   | 0   | 0   | 0   | 4   | 3   | 1   | 2   | 0   | 0   | 0   | 0   | 10    |
| 2004          | 0   | 0   | 0   | 1   | 0   |     |     |     |     |     |     |     | 1     |
| 5 Yr.<br>Ave. | 0.6 | 1.4 | 0   | 0.2 | 0.8 | 3   | 2.4 | 0.8 | 1.4 | 2.6 | 0   | 1.6 | 14.8  |
| MAX           | 2   | 6   | 0   | 1   | 4   | 8   | 7   | 2   | 6   | 13  | 0   | 6   | 22    |
| MIN           | 0   | 0   | 0   | 0   | 0   | 0   | 0   | 0   | 0   | 0   | 0   | 0   | 8     |

AAL-240

System Safety Analysis Branch

## SUBTOTAL AK GOAL ACCIDENTS (GA & FAR 135)

| Year          | JAN | FEB | MAR | APR | MAY | JUN | JUL  | AUG  | SEP  | OCT | NOV | DEC | TOTAL |
|---------------|-----|-----|-----|-----|-----|-----|------|------|------|-----|-----|-----|-------|
| 94            | 3   | 6   | 5   | 5   | 9   | 12  | 20   | 33   | 17   | 5   | 5   | 11  | 131   |
| 95            | 6   | 2   | 12  | 8   | 13  | 29  | 27   | 30   | 19   | 11  | 6   | 7   | 171   |
| 96            | 2   | 0   | 14  | 20  | 15  | 12  | 18   | 24   | 33   | 6   | 3   | 4   | 153   |
| 97            | 8   | 7   | 16  | 20  | 12  | 15  | 18   | 24   | 33   | 7   | 2   | 3   | 154   |
| 98            | 4   | 7   | 8   | 10  | 19  | 26  | 24   | 21   | 32   | 8   | 2   | 5   | 162   |
| 99            | 5   | 3   | 10  | 16  | 11  | 20  | 17   | 26   | 26   | 8   | 4   | 6   | 152   |
| 2000          | 1   | 8   | 7   | 12  | 11  | 18  | 12   | 17   | 22   | 12  | 6   | 6   | 133   |
| 2001          | 7   | 4   | 7   | 10  | 7   | 17  | 19   | 30   | 18   | 7   | 0   | 0   | 120   |
| 2002          | 2   | 6   | 8   | 3   | 11  | 27  | 16   | 24   | 16   | 9   | 4   | 7   | 135   |
| 2003          | 1   | 4   | 8   | 7   | 7   | 13  | 20   | 20   | 22   | 4   | 7   | 4   | 115   |
| 2004          | 3   | 3   | 5   | 8   | 9   |     |      |      |      |     |     |     | 28    |
| 5 Yr.<br>Ave. | 2.8 | 5   | 7   | 8   | 9   | 19  | 16.8 | 23.4 | 20.8 | 8   | 4.2 | 4.6 | 131   |
| MAX           | 7   | 8   | 8   | 12  | 11  | 27  | 20   | 30   | 26   | 12  | 7   | 7   | 152   |
| MIN           | 1   | 3   | 5   | 3   | 7   | 13  | 12   | 17   | 16   | 4   | 0   | 0   | 115   |

AAL-240

System Safety Analysis Branch

## SUBTOTAL AK GOAL FATAL ACCIDENTS(GA & FAR 135)

| Year          | JAN | FEB | MAR | APR | MAY | JUN | JUL | AUG | SEP | OCT | NOV | DEC | TOTAL |
|---------------|-----|-----|-----|-----|-----|-----|-----|-----|-----|-----|-----|-----|-------|
| 94            | 1   | 1   | 0   | 0   | 0   | 2   | 1   | 6   | 2   | 0   | 1   | 2   | 16    |
| 95            | 0   | 1   | 0   | 1   | 2   | 4   | 5   | 5   | 2   | 0   | 0   | 0   | 20    |
| 96            | 0   | 0   | 0   | 1   | 1   | 1   | 3   | 4   | 5   | 2   | 2   | 1   | 20    |
| 97            | 1   | 2   | 3   | 4   | 0   | 2   | 2   | 2   | 3   | 2   | 1   | 0   | 22    |
| 98            | 0   | 1   | 0   | 1   | 3   | 1   | 3   | 2   | 3   | 0   | 0   | 0   | 14    |
| 99            | 0   | 0   | 0   | 1   | 2   | 3   | 0   | 5   | 1   | 0   | 0   | 1   | 13    |
| 2000          | 0   | 1   | 0   | 0   | 1   | 3   | 2   | 2   | 2   | 1   | 0   | 2   | 14    |
| 2001          | 1   | 0   | 0   | 0   | 0   | 0   | 3   | 2   | 0   | 2   | 0   | 0   | 8     |
| 2002          | 1   | 1   | 1   | 1   | 1   | 2   | 2   | 4   | 0   | 0   | 0   | 1   | 14    |
| 2003          | 0   | 0   | 0   | 0   | 1   | 2   | 3   | 3   | 1   | 0   | 0   | 0   | 10    |
| 2004          | 0   | 0   | 0   | 1   | 1   |     |     |     |     |     |     |     | 2     |
| 5 Yr.<br>Ave. | 0.4 | 0.4 | 0.2 | 0.4 | 0.8 | 2   | 2   | 3.2 | 0.8 | 0.6 | 0   | 0.8 | 11.8  |
| MAX           | 1   | 1   | 1   | 1   | 1   | 3   | 3   | 5   | 2   | 2   | 0   | 2   | 14    |
| MIN           | 0   | 0   | 0   | 0   | 0   | 0   | 0   | 2   | 0   | 0   | 0   | 0   | 8     |

**AAL-240**

**System Safety Analysis Branch**

## SUBTOTAL AK Goal FATALITIES (GA & FAR 135)

| Year          | JAN | FEB | MAR | APR | MAY | JUN | JUL | AUG | SEP | OCT | NOV | DEC | TOTAL |
|---------------|-----|-----|-----|-----|-----|-----|-----|-----|-----|-----|-----|-----|-------|
| 94            | 1   | 1   | 0   | 0   | 0   | 10  | 3   | 18  | 3   | 0   | 1   | 6   | 43    |
| 95            | 0   | 1   | 0   | 2   | 3   | 18  | 15  | 8   | 3   | 0   | 0   | 0   | 50    |
| 96            | 0   | 0   | 0   | 1   | 2   | 1   | 4   | 6   | 11  | 4   | 3   | 1   | 33    |
| 97            | 1   | 4   | 6   | 11  | 0   | 6   | 8   | 4   | 4   | 3   | 8   | 0   | 55    |
| 98            | 0   | 1   | 0   | 1   | 6   | 1   | 5   | 2   | 7   | 0   | 0   | 0   | 23    |
| 99            | 0   | 0   | 0   | 1   | 3   | 9   | 0   | 11  | 1   | 0   | 0   | 6   | 31    |
| 2000          | 0   | 6   | 0   | 0   | 1   | 6   | 2   | 4   | 6   | 1   | 0   | 6   | 32    |
| 2001          | 2   | 0   | 0   | 0   | 0   | 0   | 11  | 2   | 0   | 13  | 0   | 0   | 28    |
| 2002          | 1   | 1   | 1   | 1   | 2   | 2   | 6   | 7   | 0   | 0   | 0   | 1   | 22    |
| 2003          | 0   | 0   | 0   | 0   | 4   | 5   | 10  | 7   | 3   | 0   | 0   | 0   | 29    |
| 2004          | 0   | 0   | 0   | 1   | 0   |     |     |     |     |     |     |     | 2     |
| 5 Yr.<br>Ave. | 0.6 | 1.4 | 0.2 | 0.4 | 1.4 | 4.4 | 5.8 | 6.2 | 2   | 2.8 | 0   | 2.6 | 28.4  |
| MAX           | 2   | 6   | 1   | 1   | 4   | 9   | 11  | 11  | 6   | 13  | 0   | 6   | 32    |
| MIN           | 0   | 0   | 0   | 0   | 0   | 0   | 0   | 2   | 0   | 0   | 0   | 0   | 22    |

**AAL-240**

**System Safety Analysis Branch**

## AIR CARRIER TOTAL (FAR 121)

| Year          | JAN | FEB | MAR | APR | MAY | JUN | JUL | AUG | SEP | OCT | NOV | DEC | TOTAL |
|---------------|-----|-----|-----|-----|-----|-----|-----|-----|-----|-----|-----|-----|-------|
| 94            | 0   | 0   | 0   | 0   | 0   | 0   | 0   | 0   | 0   | 0   | 1   | 1   | 2     |
| 95            | 0   | 0   | 0   | 0   | 0   | 1   | 1   | 0   | 0   | 0   | 0   | 0   | 2     |
| 96            | 0   | 2   | 0   | 0   | 1   | 0   | 2   | 0   | 0   | 0   | 0   | 1   | 6     |
| 97            | 0   | 0   | 0   | 1   | 0   | 0   | 0   | 1   | 0   | 1   | 0   | 0   | 3     |
| 98            | 1   | 0   | 0   | 0   | 0   | 1   | 0   | 1   | 0   | 0   | 2   | 0   | 5     |
| 99            | 0   | 0   | 0   | 0   | 2   | 0   | 1   | 2   | 0   | 0   | 0   | 0   | 5     |
| 2000          | 0   | 0   | 0   | 0   | 0   | 0   | 0   | 0   | 0   | 2   | 1   | 0   | 3     |
| 2001          | 1   | 0   | 0   | 0   | 0   | 0   | 1   | 1   | 1   | 0   | 0   | 1   | 5     |
| 2002          | 0   | 1   | 2   | 0   | 0   | 0   | 1   | 0   | 0   | 0   | 0   | 0   | 4     |
| 2003          | 1   | 0   | 1   | 1   | 0   | 0   | 0   | 0   | 0   | 0   | 0   | 0   | 3     |
| 2004          | 0   | 0   | 0   | 0   | 1   |     |     |     |     |     |     |     | 1     |
| 5 Yr.<br>Ave. | 0.4 | 0.2 | 0.6 | 0.2 | 0.2 | 0   | 0.6 | 0.6 | 0.2 | 0.4 | 0.2 | 0.2 | 4     |
| MAX           | 1   | 1   | 2   | 1   | 1   | 0   | 1   | 2   | 1   | 2   | 1   | 1   | 5     |
| MIN           | 0   | 0   | 0   | 0   | 0   | 0   | 0   | 0   | 0   | 0   | 0   | 0   | 3     |

AAL-240

System Safety Analysis Branch

## AIR CARRIER FATAL ACCIDENTS (FAR 121)

| Year          | JAN | FEB | MAR | APR | MAY | JUN | JUL | AUG | SEP | OCT | NOV | DEC | TOTAL |
|---------------|-----|-----|-----|-----|-----|-----|-----|-----|-----|-----|-----|-----|-------|
| 94            | 0   | 0   | 0   | 0   | 0   | 0   | 0   | 0   | 0   | 0   | 0   | 0   | 0     |
| 95            | 0   | 0   | 0   | 0   | 0   | 0   | 0   | 0   | 0   | 0   | 0   | 0   | 0     |
| 96            | 0   | 0   | 0   | 0   | 0   | 0   | 2   | 0   | 0   | 0   | 0   | 0   | 2     |
| 97            | 0   | 0   | 0   | 0   | 0   | 0   | 0   | 0   | 0   | 0   | 0   | 0   | 0     |
| 98            | 0   | 0   | 0   | 0   | 0   | 0   | 0   | 0   | 0   | 0   | 0   | 0   | 0     |
| 99            | 0   | 0   | 0   | 0   | 1   | 0   | 0   | 0   | 0   | 0   | 0   | 0   | 1     |
| 2000          | 0   | 0   | 0   | 0   | 0   | 0   | 0   | 0   | 0   | 0   | 0   | 0   | 0     |
| 2001          | 0   | 0   | 0   | 0   | 0   | 0   | 0   | 0   | 0   | 0   | 0   | 0   | 0     |
| 2002          | 0   | 0   | 0   | 0   | 0   | 0   | 0   | 0   | 0   | 0   | 0   | 0   | 0     |
| 2003          | 0   | 0   | 0   | 0   | 0   | 0   | 0   | 0   | 0   | 0   | 0   | 0   | 0     |
| 2004          | 0   | 0   | 0   | 0   | 0   |     |     |     |     |     |     |     | 0     |
| 5 Yr.<br>Ave. | 0   | 0   | 0   | 0   | 0   | 0   | 0   | 0   | 0   | 0   | 0   | 0   | 0.2   |
| MAX           | 0   | 0   | 0   | 0   | 0   | 0   | 0   | 0   | 0   | 0   | 0   | 0   | 1     |
| MIN           | 0   | 0   | 0   | 0   | 0   | 0   | 0   | 0   | 0   | 0   | 0   | 0   | 0     |

AAL-240

System Safety Analysis Branch

## AIR CARRIER FATALITIES (FAR 121)

| Year          | JAN      | FEB      | MAR      | APR      | MAY      | JUN      | JUL      | AUG      | SEP      | OCT      | NOV      | DEC      | TOTAL    |
|---------------|----------|----------|----------|----------|----------|----------|----------|----------|----------|----------|----------|----------|----------|
| 94            | 0        | 0        | 0        | 0        | 0        | 0        | 0        | 0        | 0        | 0        | 0        | 0        | 0        |
| 95            | 0        | 0        | 0        | 0        | 0        | 0        | 0        | 0        | 0        | 0        | 0        | 0        | 0        |
| 96            | 0        | 0        | 0        | 0        | 0        | 0        | 5        | 0        | 0        | 0        | 0        | 0        | 5        |
| 97            | 0        | 0        | 0        | 0        | 0        | 0        | 0        | 0        | 0        | 0        | 0        | 0        | 0        |
| 98            | 0        | 0        | 0        | 0        | 0        | 0        | 0        | 0        | 0        | 0        | 0        | 0        | 0        |
| 99            | 0        | 0        | 0        | 0        | 1        | 0        | 0        | 0        | 0        | 0        | 0        | 0        | 1        |
| <b>2000</b>   | <b>0</b> | <b>0</b> | <b>0</b> | <b>0</b> | <b>0</b> | <b>0</b> | <b>0</b> | <b>0</b> | <b>0</b> | <b>0</b> | <b>0</b> | <b>0</b> | <b>0</b> |
| <b>2001</b>   | <b>0</b> | <b>0</b> | <b>0</b> | <b>0</b> | <b>0</b> | <b>0</b> | <b>0</b> | <b>0</b> | <b>0</b> | <b>0</b> | <b>0</b> | <b>0</b> | <b>0</b> |
| <b>2002</b>   | <b>0</b> | <b>0</b> | <b>0</b> | <b>0</b> | <b>0</b> | <b>0</b> | <b>0</b> | <b>0</b> | <b>0</b> | <b>0</b> | <b>0</b> | <b>0</b> | <b>0</b> |
| <b>2003</b>   | <b>0</b> | <b>0</b> | <b>0</b> | <b>0</b> | <b>0</b> | <b>0</b> | <b>0</b> | <b>0</b> | <b>0</b> | <b>0</b> | <b>0</b> | <b>0</b> | <b>0</b> |
| <b>2004</b>   | <b>0</b> | <b>0</b> | <b>0</b> | <b>0</b> | <b>0</b> |          |          |          |          |          |          |          | <b>0</b> |
| 5 Yr.<br>Ave. | 0        | 0        | 0        | 0        | 0        | 0        | 0        | 0        | 0        | 0        | 0        | 0        | 0.2      |
| MAX           | 0        | 0        | 0        | 0        | 0        | 0        | 0        | 0        | 0        | 0        | 0        | 0        | 1        |
| MIN           | 0        | 0        | 0        | 0        | 0        | 0        | 0        | 0        | 0        | 0        | 0        | 0        | 0        |

AAL-240

System Safety Analysis Branch



## TOTAL ACCIDENTS All Events

| Year          | JAN | FEB | MAR | APR | MAY | JUN  | JUL  | AUG  | SEP | OCT | NOV | DEC | TOTAL |
|---------------|-----|-----|-----|-----|-----|------|------|------|-----|-----|-----|-----|-------|
| 94            | 3   | 6   | 5   | 5   | 9   | 12   | 21   | 31   | 18  | 5   | 6   | 12  | 133   |
| 95            | 6   | 2   | 12  | 8   | 13  | 30   | 28   | 31   | 19  | 11  | 6   | 7   | 173   |
| 96            | 2   | 2   | 14  | 20  | 16  | 13   | 19   | 26   | 33  | 6   | 3   | 5   | 159   |
| 97            | 8   | 7   | 17  | 22  | 12  | 15   | 17   | 22   | 25  | 7   | 2   | 3   | 157   |
| 98            | 4   | 7   | 8   | 9   | 20  | 27   | 24   | 20   | 31  | 8   | 4   | 5   | 167   |
| 99            | 5   | 3   | 10  | 16  | 12  | 20   | 19   | 28   | 26  | 8   | 4   | 6   | 157   |
| 2000          | 1   | 8   | 7   | 12  | 11  | 19   | 12   | 17   | 22  | 13  | 7   | 7   | 136   |
| 2001          | 7   | 4   | 7   | 10  | 7   | 15   | 19   | 30   | 19  | 6   | 0   | 1   | 125   |
| 2002          | 2   | 7   | 10  | 3   | 9   | 27   | 17   | 28   | 16  | 10  | 4   | 6   | 139   |
| 2003          | 2   | 4   | 8   | 8   | 7   | 13   | 19   | 20   | 22  | 4   | 7   | 4   | 118   |
| 2004          | 3   | 3   | 5   | 8   | 10  |      |      |      |     |     |     |     | 29    |
| 5 Yr.<br>Ave. | 3   | 5.2 | 7.4 | 8.2 | 8.8 | 18.8 | 17.2 | 24.6 | 21  | 8.2 | 4.4 | 4.8 | 135   |
| MAX           | 7   | 8   | 10  | 12  | 11  | 27   | 19   | 30   | 26  | 13  | 7   | 7   | 157   |
| MIN           | 1   | 3   | 5   | 3   | 7   | 13   | 12   | 17   | 16  | 4   | 0   | 1   | 118   |

**AAL-240**

**System Safety Analysis Branch**

## TOTAL FATAL ACCIDENTS All Events

| Year          | JAN | FEB | MAR | APR | MAY | JUN | JUL | AUG | SEP | OCT | NOV | DEC | TOTAL |
|---------------|-----|-----|-----|-----|-----|-----|-----|-----|-----|-----|-----|-----|-------|
| 94            | 1   | 1   | 0   | 0   | 0   | 2   | 1   | 6   | 2   | 0   | 1   | 2   | 16    |
| 95            | 0   | 1   | 0   | 1   | 2   | 4   | 5   | 5   | 2   | 0   | 0   | 0   | 20    |
| 96            | 0   | 0   | 0   | 1   | 1   | 1   | 5   | 4   | 5   | 2   | 2   | 1   | 22    |
| 97            | 1   | 2   | 3   | 4   | 0   | 2   | 2   | 2   | 3   | 2   | 1   | 0   | 22    |
| 98            | 0   | 1   | 0   | 1   | 3   | 1   | 3   | 2   | 3   | 0   | 0   | 0   | 14    |
| 99            | 0   | 0   | 0   | 1   | 3   | 3   | 0   | 5   | 1   | 0   | 0   | 1   | 14    |
| 2000          | 0   | 1   | 0   | 0   | 1   | 3   | 2   | 2   | 2   | 1   | 0   | 2   | 14    |
| 2001          | 1   | 0   | 0   | 0   | 0   | 0   | 3   | 2   | 0   | 2   | 0   | 0   | 8     |
| 2002          | 1   | 1   | 1   | 1   | 1   | 2   | 2   | 4   | 0   | 0   | 0   | 1   | 14    |
| 2003          | 0   | 0   | 0   | 0   | 1   | 2   | 3   | 3   | 1   | 0   | 0   | 0   | 10    |
| 2004          | 0   | 0   | 0   | 1   | 1   |     |     |     |     |     |     |     | 2     |
| 5 Yr.<br>Ave. | 0.4 | 0.4 | 0.2 | 0.4 | 0.8 | 2   | 2   | 3.2 | 0.8 | 0.6 | 0   | 0.8 | 12    |
| MAX           | 1   | 1   | 1   | 1   | 1   | 3   | 3   | 5   | 2   | 2   | 0   | 2   | 14    |
| MIN           | 0   | 0   | 0   | 0   | 0   | 0   | 0   | 2   | 0   | 0   | 0   | 0   | 8     |

**AAL-240**

**System Safety Analysis Branch**

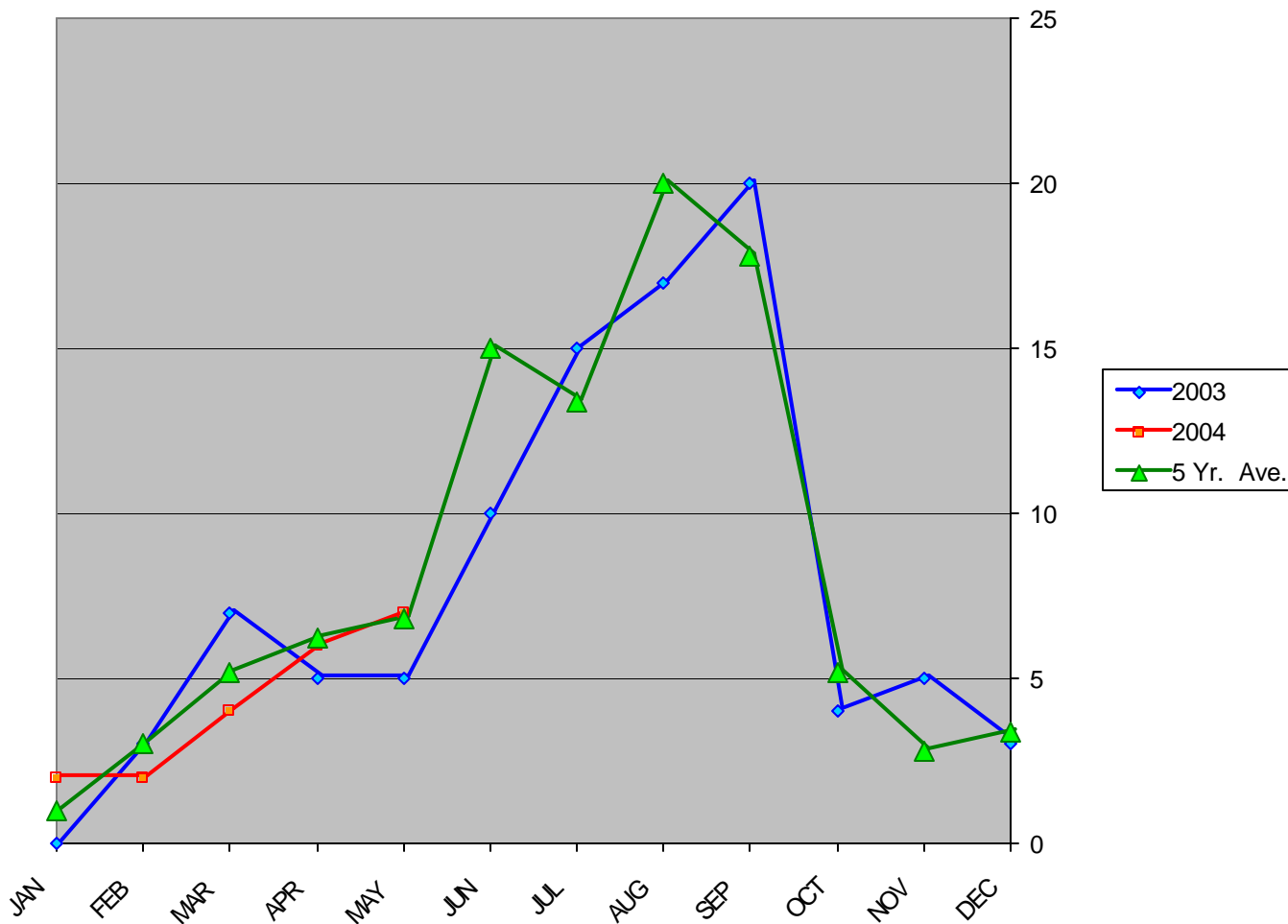
## TOTAL FATALITIES (All Events)

| Year          | JAN | FEB | MAR | APR | MAY | JUN | JUL | AUG | SEP | OCT | NOV | DEC | TOTAL |
|---------------|-----|-----|-----|-----|-----|-----|-----|-----|-----|-----|-----|-----|-------|
| 94            | 1   | 1   | 0   | 0   | 0   | 10  | 3   | 18  | 3   | 0   | 1   | 6   | 43    |
| 95            | 0   | 1   | 0   | 2   | 3   | 18  | 15  | 8   | 3   | 0   | 0   | 0   | 50    |
| 96            | 0   | 0   | 0   | 1   | 2   | 1   | 9   | 6   | 11  | 4   | 3   | 1   | 38    |
| 97            | 1   | 4   | 6   | 11  | 0   | 6   | 8   | 4   | 4   | 3   | 8   | 0   | 55    |
| 98            | 0   | 1   | 0   | 1   | 6   | 1   | 5   | 2   | 7   | 0   | 0   | 0   | 23    |
| 99            | 0   | 0   | 0   | 1   | 4   | 9   | 0   | 11  | 1   | 0   | 0   | 6   | 32    |
| 2000          | 0   | 6   | 0   | 0   | 1   | 6   | 2   | 4   | 6   | 1   | 0   | 6   | 32    |
| 2001          | 2   | 0   | 0   | 0   | 0   | 0   | 11  | 2   | 0   | 13  | 0   | 0   | 28    |
| 2002          | 1   | 1   | 1   | 1   | 2   | 2   | 6   | 7   | 0   | 0   | 0   | 1   | 22    |
| 2003          | 0   | 0   | 0   | 0   | 4   | 5   | 10  | 7   | 3   | 0   | 0   | 0   | 29    |
| 2004          | 0   | 0   | 0   | 1   | 1   |     |     |     |     |     |     |     | 2     |
| 5 Yr.<br>Ave. | 0.6 | 1.4 | 0.2 | 0.4 | 1.6 | 4.4 | 5.8 | 6.2 | 2   | 2.8 | 0   | 2.6 | 28.6  |
| MAX           | 2   | 6   | 1   | 1   | 4   | 9   | 11  | 11  | 6   | 13  | 0   | 6   | 32    |
| MIN           | 0   | 0   | 0   | 0   | 0   | 0   | 0   | 2   | 0   | 0   | 0   | 0   | 22    |

**AAL-240**

**System Safety Analysis Branch**

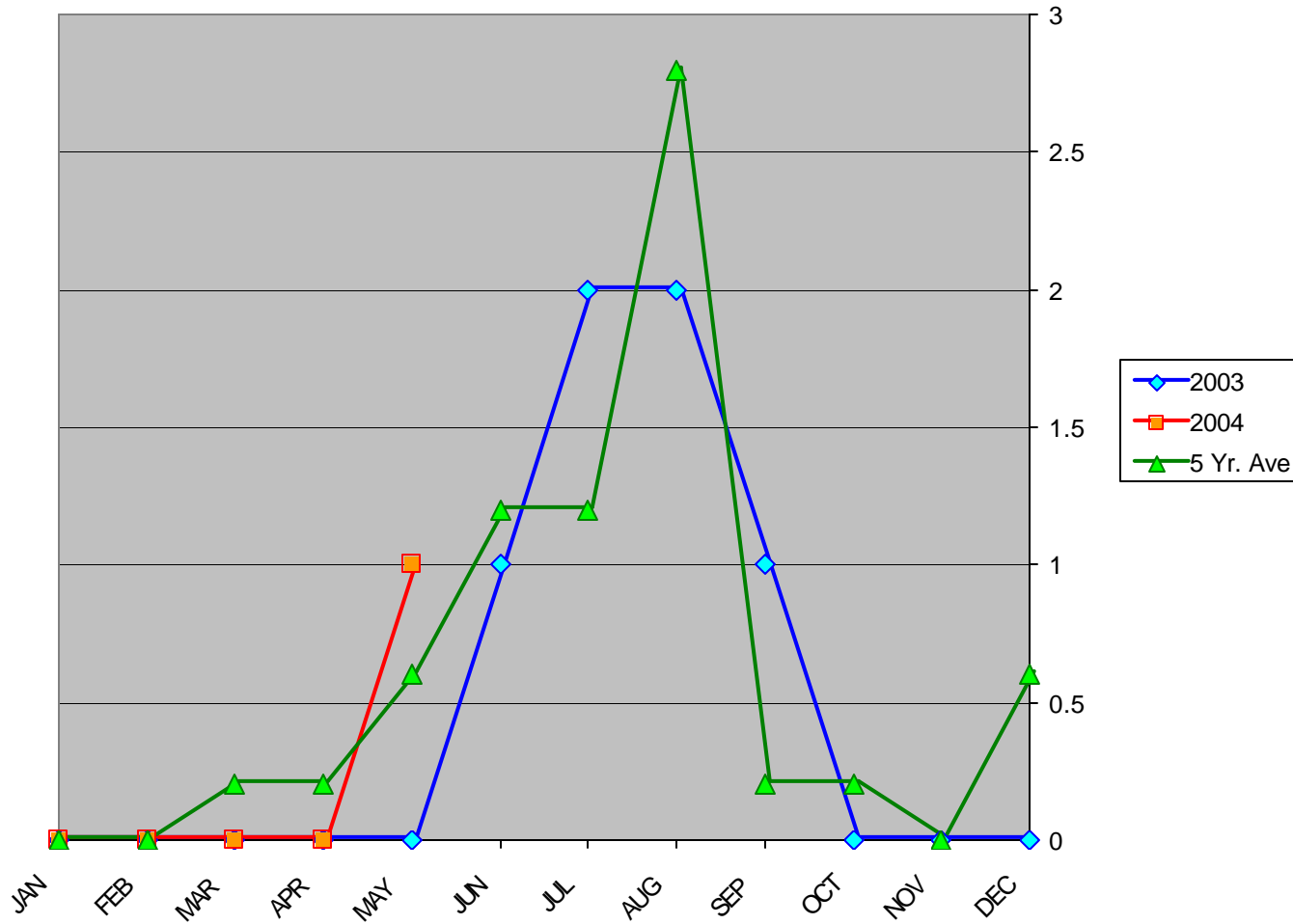
## General Aviation Accidents in Alaska



AAL-240

System Safety Analysis Branch

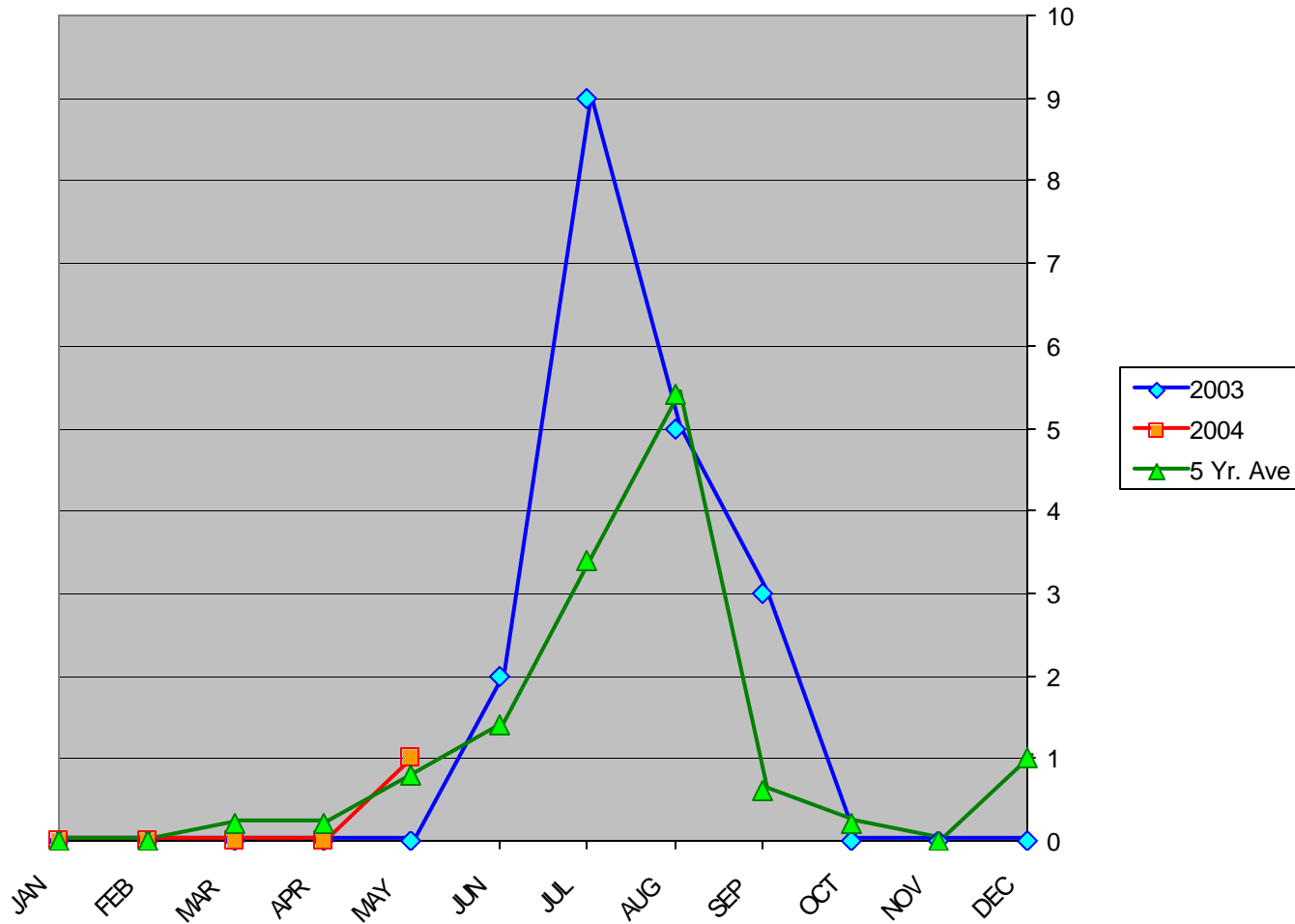
## General Aviation Fatal Accidents in Alaska



AAL-240

System Safety Analysis Branch

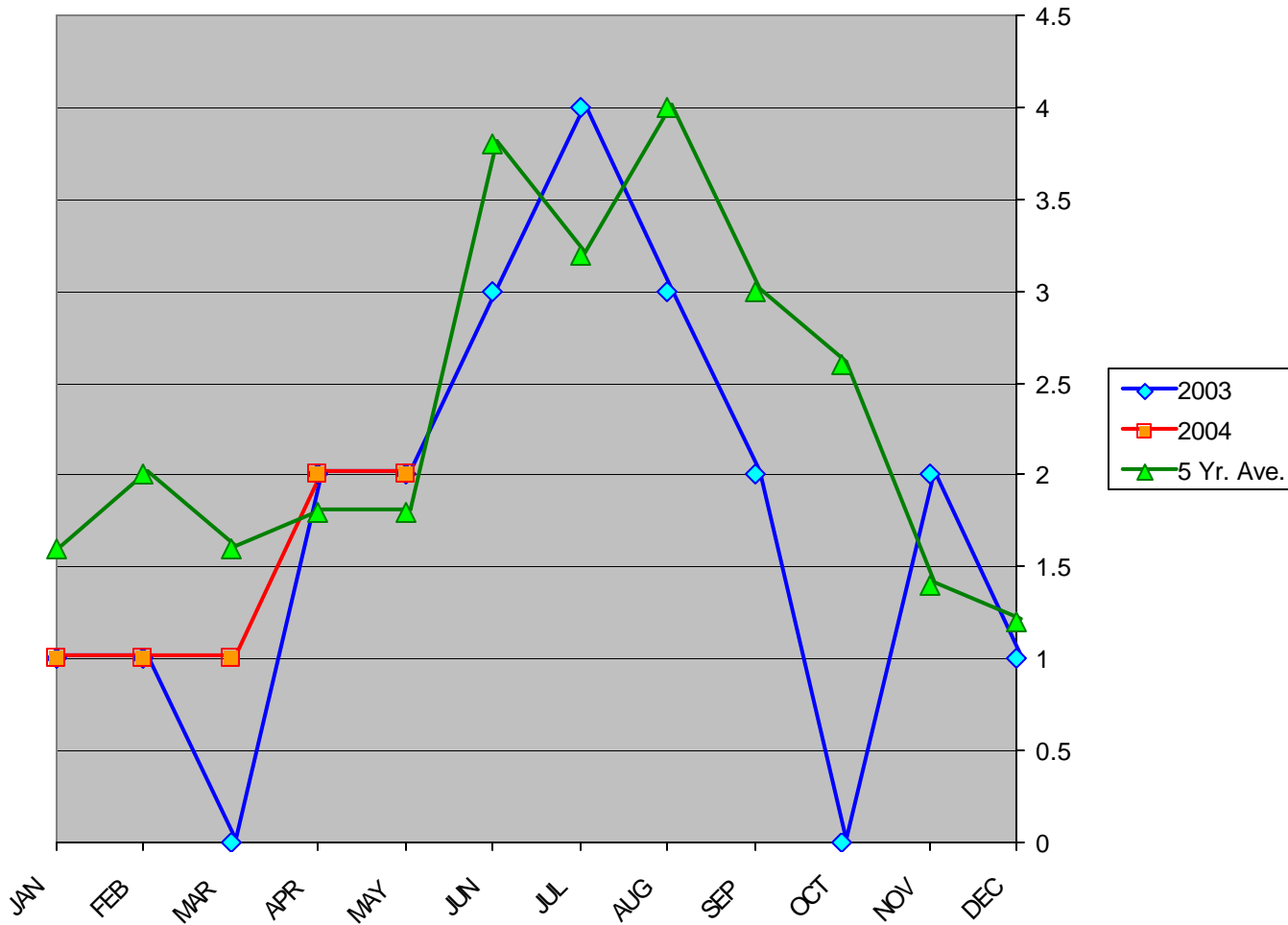
## General Aviation Fatalities in Alaska



AAL-240

System Safety Analysis Branch

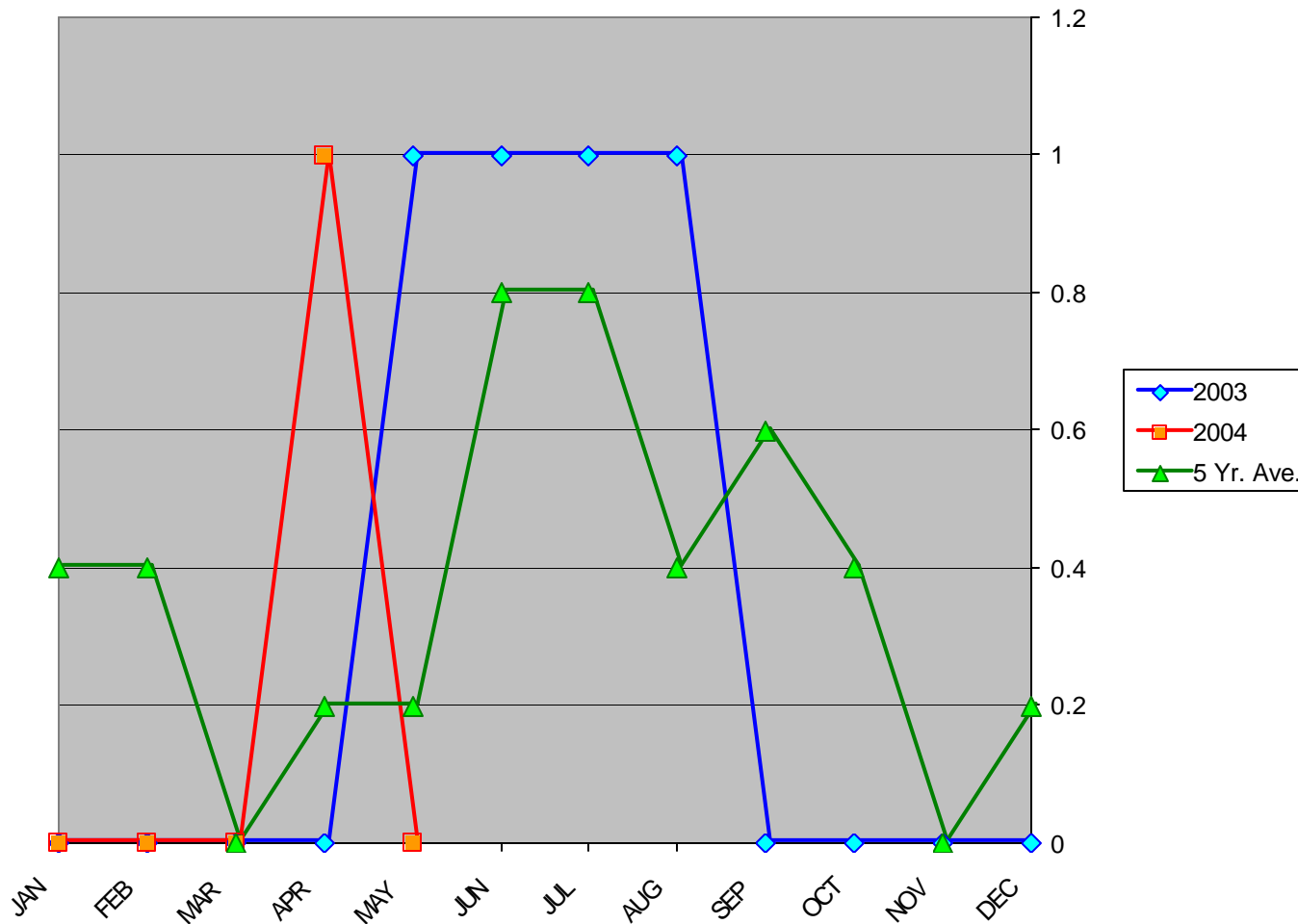
## Air Carrier (Part 135) Accidents in Alaska



AAL-240

System Safety Analysis Branch

## Air Carrier (FAR 135) Fatal Accidents in Alaska

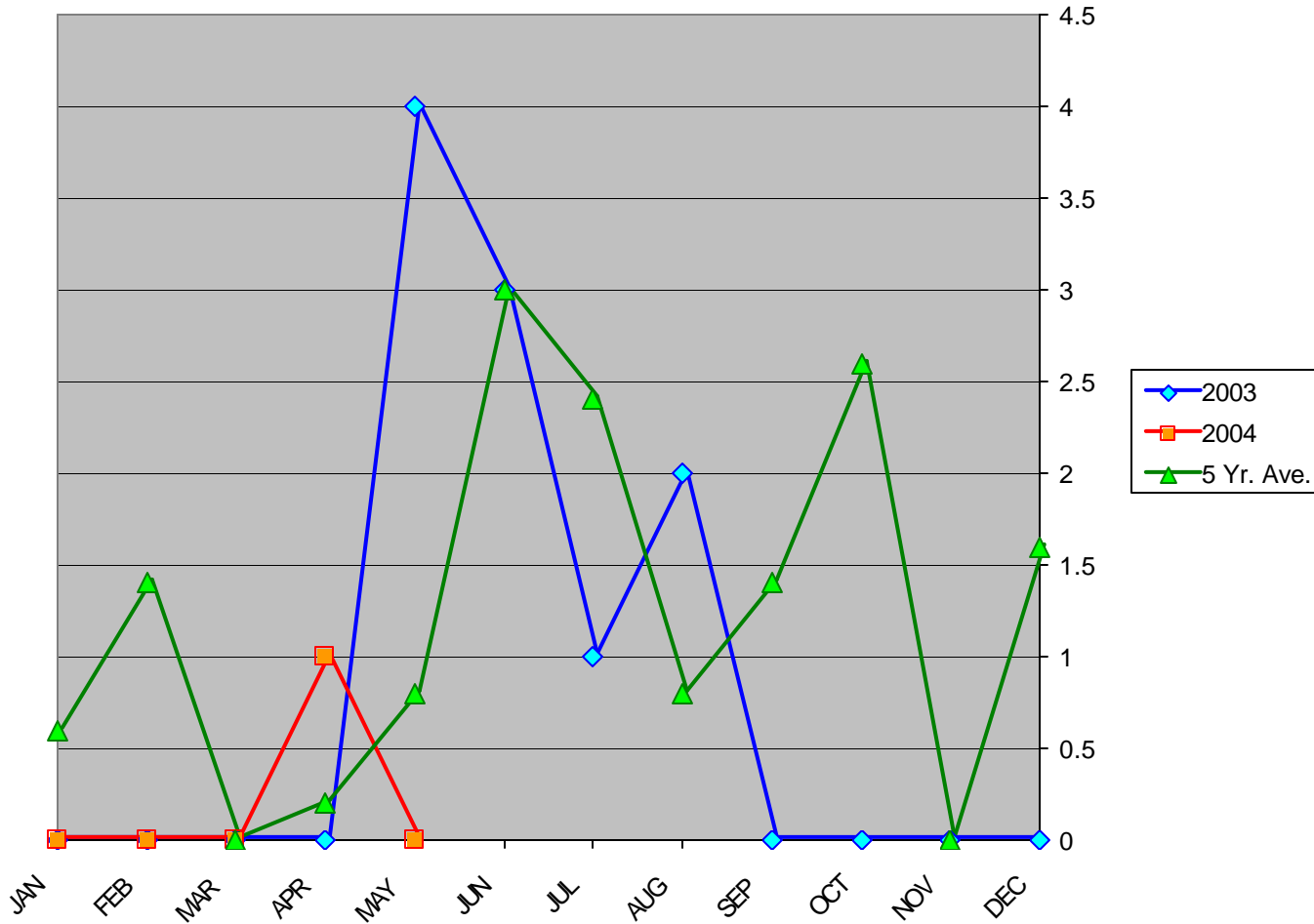


AAL-240

System Safety Analysis Branch



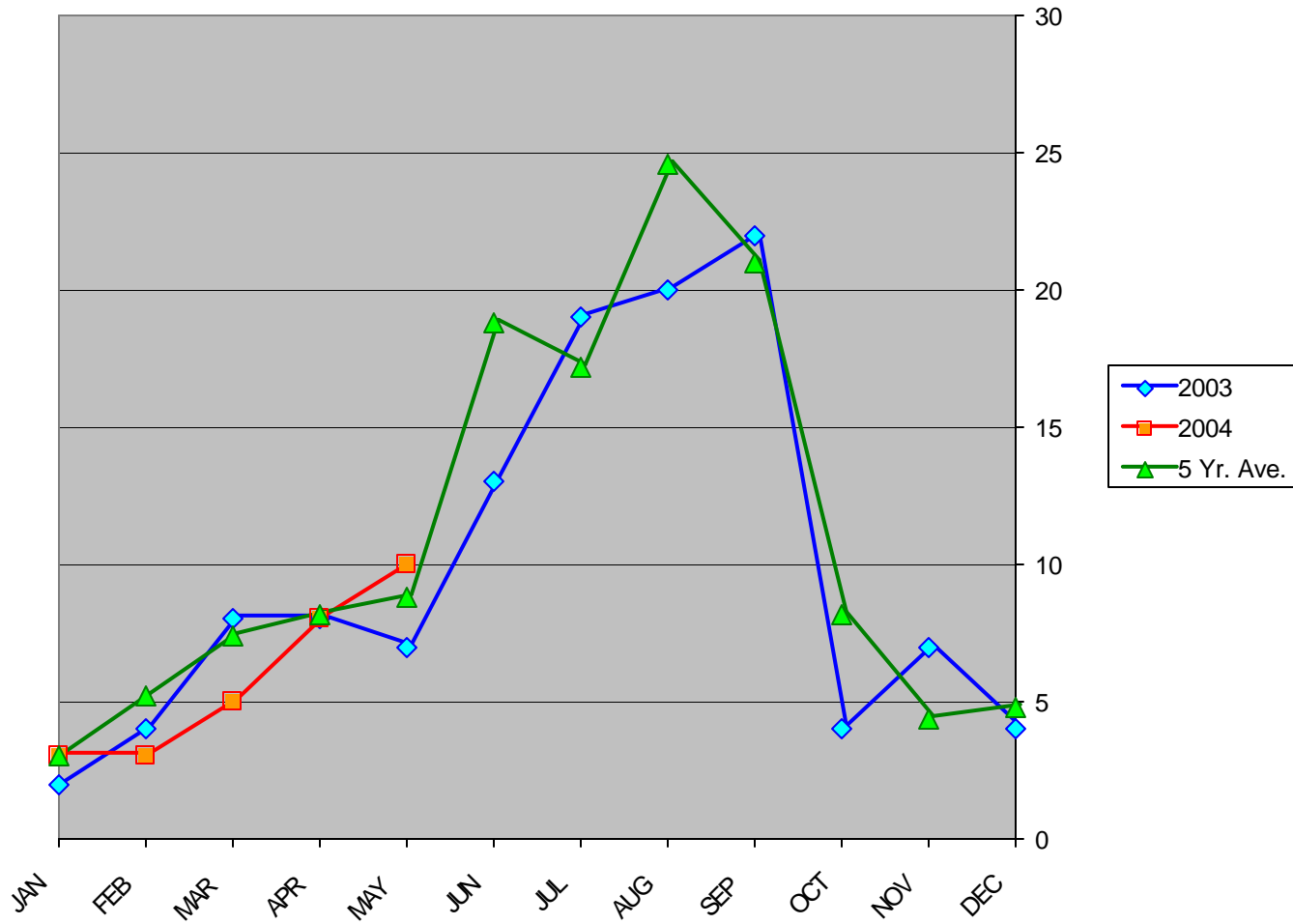
## Air Carrier (FAR 135) Fatalities in Alaska



AAL-240

System Safety Analysis Branch

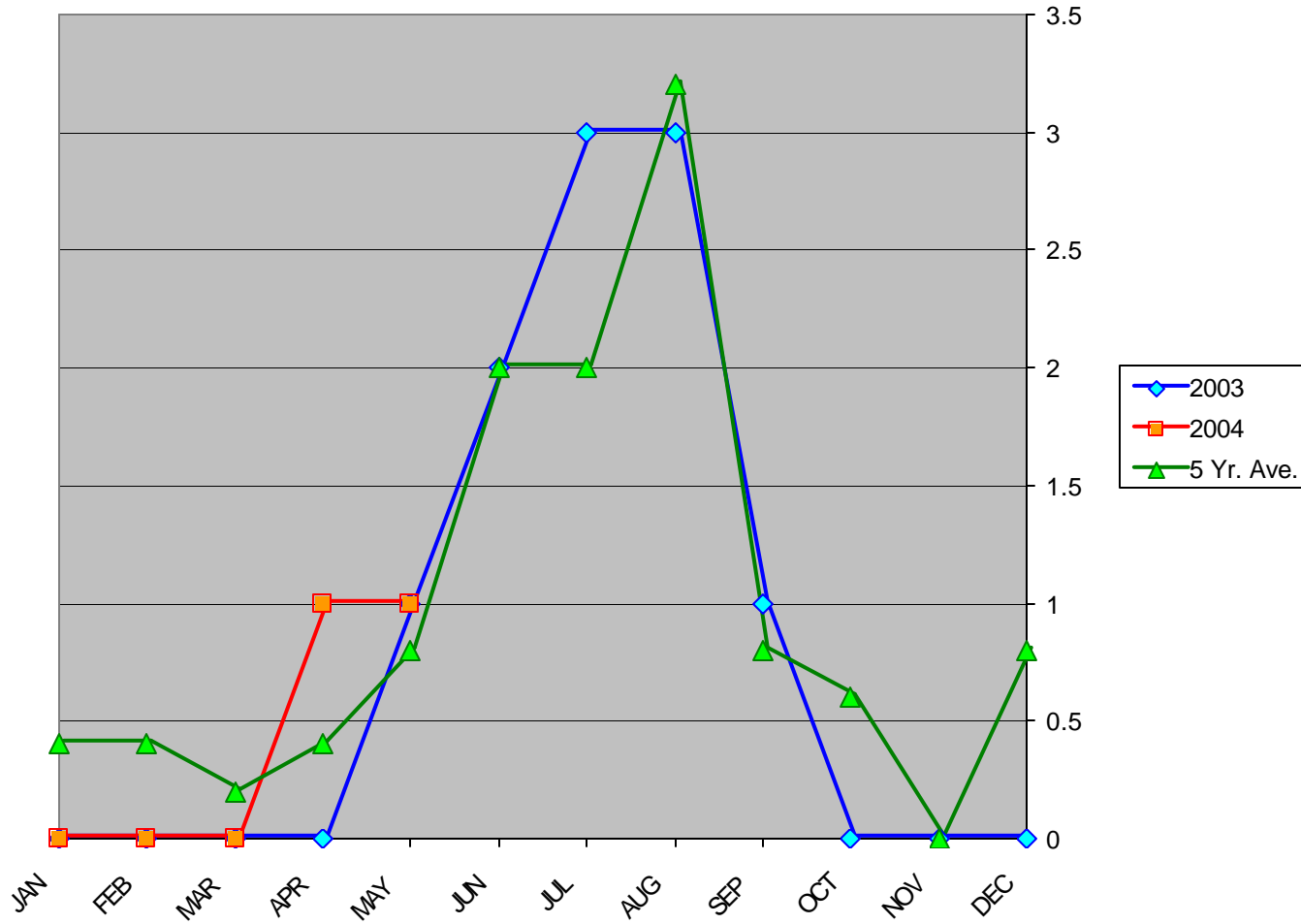
# Total Accidents in Alaska



**AAAL-240**

**System Safety Analysis Branch**

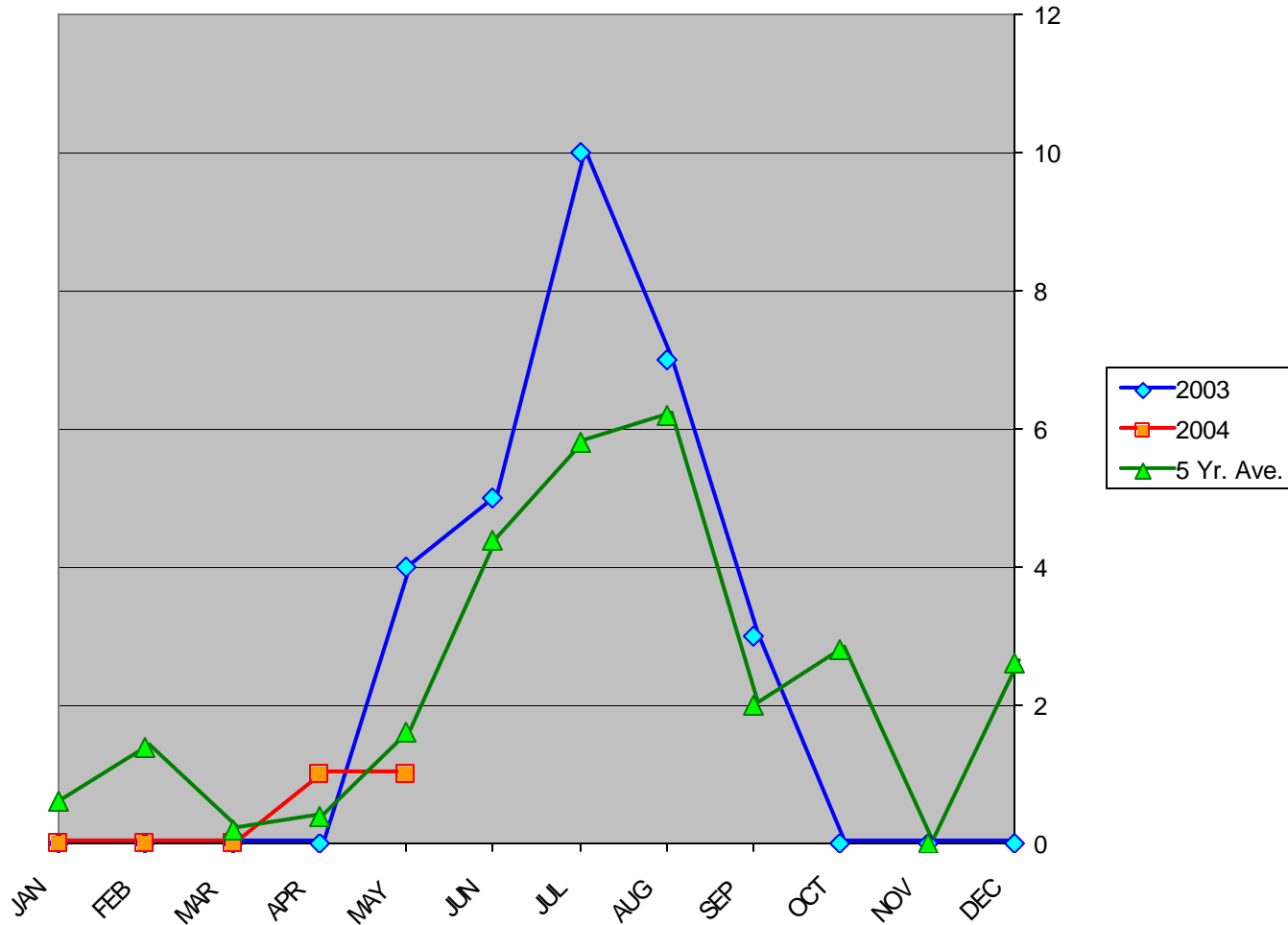
# Total Fatal Accidents in Alaska



AAL-240

System Safety Analysis Branch

# Total Fatalities in Alaska



AAL-240

System Safety Analysis Branch