

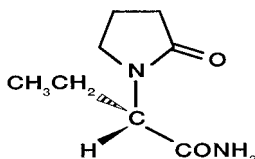
**KEPPRA® (levetiracetam)**  
**250 mg, 500 mg and 750 mg tablets**  
**100 mg/mL oral solution**

**Rx only**

## DESCRIPTION

Keppra® (levetiracetam) is an antiepileptic drug available as 250 mg (blue), 500 mg (yellow) and 750 mg (orange) tablets and as a clear, colorless, grape-flavored liquid (100 mg/mL) for oral administration.

The chemical name of levetiracetam, a single enantiomer, is (-)-(S)- $\alpha$ -ethyl-2-oxo-1-pyrrolidine acetamide, its molecular formula is  $C_8H_{14}N_2O_2$  and its molecular weight is 170.21. Levetiracetam is chemically unrelated to existing antiepileptic drugs (AEDs). It has the following structural formula:



Levetiracetam is a white to off-white crystalline powder with a faint odor and a bitter taste. It is very soluble in water (104.0 g/100 mL). It is freely soluble in chloroform (65.3 g/100 mL) and in methanol (53.6 g/100 mL), soluble in ethanol (16.5 g/100 mL), sparingly soluble in acetonitrile (5.7 g/100 mL) and practically insoluble in n-hexane. (Solubility limits are expressed as g/100 mL solvent.)

Keppra® tablets contain the labeled amount of levetiracetam. Inactive ingredients: colloidal silicon dioxide, corn starch, hydroxypropyl methylcellulose, magnesium stearate, polyethylene glycol 4000, povidone, talc, titanium dioxide and coloring agents.

The individual tablets contain the following coloring agents:

250 mg tablets: FD&C Blue No. 2,

500 mg tablets: yellow iron oxide,

750 mg tablets: FD&C Blue No. 2, FD&C Yellow No. 6 and red iron oxide.

Keppra® oral solution contains 100 mg of levetiracetam per mL. Inactive ingredients: ammonium glycyrrhizinate, citric acid monohydrate, glycerin, maltitol solution, methylparaben, potassium acesulfame, propylparaben, purified water, sodium citrate dihydrate and natural and artificial flavor.

## CLINICAL PHARMACOLOGY

### Mechanism Of Action

The precise mechanism(s) by which levetiracetam exerts its antiepileptic effect is unknown. The antiepileptic activity of levetiracetam was assessed in a number of animal models of epileptic seizures. Levetiracetam did not inhibit single seizures induced by maximal stimulation with electrical current or different chemoconvulsants and showed only minimal activity in submaximal stimulation and in threshold tests. Protection was observed, however, against secondarily generalized activity from focal seizures induced by pilocarpine and kainic acid, two chemoconvulsants that induce seizures that mimic some features of human complex partial seizures with secondary generalization. Levetiracetam also displayed inhibitory properties in the kindling model in rats, another model of human complex partial seizures, both during kindling development and in the fully kindled state. The predictive value of these animal models for specific types of human epilepsy is uncertain.

*In vitro* and *in vivo* recordings of epileptiform activity from the hippocampus have shown that levetiracetam inhibits burst firing without affecting normal neuronal excitability, suggesting that levetiracetam may selectively prevent hypersynchronization of epileptiform burst firing and propagation of seizure activity.

Levetiracetam at concentrations of up to 10  $\mu\text{M}$  did not demonstrate binding affinity for a variety of known receptors, such as those associated with benzodiazepines, GABA (gamma-aminobutyric acid), glycine, NMDA (N-methyl-D-aspartate), re-uptake sites, and second messenger systems. Furthermore, *in vitro* studies have failed to find an effect of levetiracetam on neuronal voltage-gated sodium or T-type calcium currents. Levetiracetam does not appear to directly facilitate GABAergic neurotransmission, but has been shown to oppose the activity of negative modulators of GABA- and glycine-gated currents in neuronal cell culture. A saturable and stereoselective neuronal binding site in rat brain tissue has been described for levetiracetam; however, the identification and function of this binding site is currently unknown.

### Pharmacokinetics

The pharmacokinetics of levetiracetam have been studied in healthy adult subjects, adults and pediatric patients with epilepsy, elderly subjects and subjects with renal and hepatic impairment.

### Overview

Levetiracetam is rapidly and almost completely absorbed after oral administration. Levetiracetam tablets and oral solution are bioequivalent. The pharmacokinetics are linear and time-invariant, with low intra- and inter-subject variability. The extent of bioavailability of levetiracetam is not affected by food. Levetiracetam is not protein-bound (<10% bound) and its volume of distribution is close to the volume of intracellular and extracellular water. Sixty-six percent (66%) of the dose is renally excreted unchanged. The major metabolic pathway of levetiracetam (24% of dose) is an enzymatic hydrolysis of the acetamide group. It is not liver cytochrome P450 dependent. The metabolites have no known pharmacological activity and are renally excreted. Plasma half-life of levetiracetam across studies is approximately 6-8 hours. It is

increased in the elderly (primarily due to impaired renal clearance) and in subjects with renal impairment.

### **Absorption and Distribution**

Absorption of levetiracetam is rapid, with peak plasma concentrations occurring in about an hour following oral administration in fasted subjects. The oral bioavailability of levetiracetam tablets is 100% and the tablets and oral solution are bioequivalent in rate and extent of absorption. Food does not affect the extent of absorption of levetiracetam but it decreases  $C_{\max}$  by 20% and delays  $T_{\max}$  by 1.5 hours. The pharmacokinetics of levetiracetam are linear over the dose range of 500-5000 mg. Steady state is achieved after 2 days of multiple twice-daily dosing. Levetiracetam and its major metabolite are less than 10% bound to plasma proteins; clinically significant interactions with other drugs through competition for protein binding sites are therefore unlikely.

### **Metabolism**

Levetiracetam is not extensively metabolized in humans. The major metabolic pathway is the enzymatic hydrolysis of the acetamide group, which produces the carboxylic acid metabolite, ucb L057 (24% of dose) and is not dependent on any liver cytochrome P450 isoenzymes. The major metabolite is inactive in animal seizure models. Two minor metabolites were identified as the product of hydroxylation of the 2-oxo-pyrrolidine ring (2% of dose) and opening of the 2-oxo-pyrrolidine ring in position 5 (1% of dose). There is no enantiomeric interconversion of levetiracetam or its major metabolite.

### **Elimination**

Levetiracetam plasma half-life in adults is  $7 \pm 1$  hour and is unaffected by either dose or repeated administration. Levetiracetam is eliminated from the systemic circulation by renal excretion as unchanged drug which represents 66% of administered dose. The total body clearance is 0.96 mL/min/kg and the renal clearance is 0.6 mL/min/kg. The mechanism of excretion is glomerular filtration with subsequent partial tubular reabsorption. The metabolite ucb L057 is excreted by glomerular filtration and active tubular secretion with a renal clearance of 4 mL/min/kg. Levetiracetam elimination is correlated to creatinine clearance. Levetiracetam clearance is reduced in patients with impaired renal function (see Special Populations, Renal Impairment and DOSAGE AND ADMINISTRATION, Adult Patients with Impaired Renal Function).

### **Pharmacokinetic Interactions**

*In vitro* data on metabolic interactions indicate that levetiracetam is unlikely to produce, or be subject to, pharmacokinetic interactions. Levetiracetam and its major metabolite, at concentrations well above  $C_{\max}$  levels achieved within the therapeutic dose range, are neither inhibitors of, nor high affinity substrates for, human liver cytochrome P450 isoforms, epoxide hydrolase or UDP-glucuronidation enzymes. In addition, levetiracetam does not affect the *in vitro* glucuronidation of valproic acid.

Potential pharmacokinetic interactions of or with levetiracetam were assessed in clinical pharmacokinetic studies (phenytoin, valproate, warfarin, digoxin, oral contraceptive, probenecid) and through pharmacokinetic screening in the placebo-controlled clinical studies in epilepsy patients (see PRECAUTIONS, Drug Interactions).

## Special Populations

### Elderly

Pharmacokinetics of levetiracetam were evaluated in 16 elderly subjects (age 61-88 years) with creatinine clearance ranging from 30 to 74 mL/min. Following oral administration of twice-daily dosing for 10 days, total body clearance decreased by 38% and the half-life was 2.5 hours longer in the elderly compared to healthy adults. This is most likely due to the decrease in renal function in these subjects.

### Pediatric Patients

Pharmacokinetics of levetiracetam were evaluated in 24 pediatric patients (age 6-12 years) after single dose (20 mg/kg). The body weight adjusted apparent clearance of levetiracetam was approximately 40% higher than in adults.

A repeat dose pharmacokinetic study was conducted in pediatric patients (age 4-12 years) at doses of 20 mg/kg/day, 40 mg/kg/day, and 60 mg/kg/day. The evaluation of the pharmacokinetic profile of levetiracetam and its metabolite (ucb L057) in 14 pediatric patients demonstrated rapid absorption of levetiracetam at all doses with a  $T_{max}$  of about 1 hour and a  $t_{1/2}$  of 5 hours across the three dosing levels. The pharmacokinetics of levetiracetam in children was linear between 20 to 60 mg/kg/day. The potential interaction of levetiracetam with other AEDs was also evaluated in these patients (see PRECAUTIONS, Drug Interactions). Levetiracetam had no significant effect on the plasma concentrations of carbamazepine, valproic acid, topiramate or lamotrigine. However, there was about a 22% increase of apparent clearance of levetiracetam when it was co-administered with an enzyme-inducing AED (e.g. carbamazepine). Population pharmacokinetic analysis showed that body weight was significantly correlated to clearance of levetiracetam in pediatric patients; clearance increased with an increase in body weight.

### Gender

Levetiracetam  $C_{max}$  and AUC were 20% higher in women (N=11) compared to men (N=12). However, clearances adjusted for body weight were comparable.

### Race

Formal pharmacokinetic studies of the effects of race have not been conducted. Cross study comparisons involving Caucasians (N=12) and Asians (N=12), however, show that pharmacokinetics of levetiracetam were comparable between the two races. Because levetiracetam is primarily renally excreted and there are no important racial differences in creatinine clearance, pharmacokinetic differences due to race are not expected.

### Renal Impairment

The disposition of levetiracetam was studied in adult subjects with varying degrees of renal function. Total body clearance of levetiracetam is reduced in patients with impaired renal function by 40% in the mild group (CLCr = 50-80 mL/min), 50% in the moderate group (CLCr = 30-50 mL/min) and 60% in the severe renal impairment group (CLCr <30 mL/min). Clearance of levetiracetam is correlated with creatinine clearance.

In anuric (end stage renal disease) patients, the total body clearance decreased 70% compared to normal subjects (CL<sub>cr</sub> >80mL/min). Approximately 50% of the pool of levetiracetam in the body is removed during a standard 4-hour hemodialysis procedure.

Dosage should be reduced in patients with impaired renal function receiving levetiracetam, and supplemental doses should be given to patients after dialysis (see PRECAUTIONS and DOSAGE AND ADMINISTRATION, Adult Patients with Impaired Renal Function).

### Hepatic Impairment

In subjects with mild (Child-Pugh A) to moderate (Child-Pugh B) hepatic impairment, the pharmacokinetics of levetiracetam were unchanged. In patients with severe hepatic impairment (Child-Pugh C), total body clearance was 50% that of normal subjects, but decreased renal clearance accounted for most of the decrease. No dose adjustment is needed for patients with hepatic impairment.

## **CLINICAL STUDIES**

### **Effectiveness In Partial Onset Seizures in Adults With Epilepsy**

The effectiveness of Keppra<sup>®</sup> as adjunctive therapy (added to other antiepileptic drugs) in adults was established in three multicenter, randomized, double-blind, placebo-controlled clinical studies in patients who had refractory partial onset seizures with or without secondary generalization. The tablet formulation was used in all these studies. In these studies, 904 patients were randomized to placebo, 1000 mg, 2000 mg, or 3000 mg/day. Patients enrolled in Study 1 or Study 2 had refractory partial onset seizures for at least two years and had taken two or more classical AEDs. Patients enrolled in Study 3 had refractory partial onset seizures for at least 1 year and had taken one classical AED. At the time of the study, patients were taking a stable dose regimen of at least one and could take a maximum of two AEDs. During the baseline period, patients had to have experienced at least two partial onset seizures during each 4-week period.

#### **Study 1**

Study 1 was a double-blind, placebo-controlled, parallel-group study conducted at 41 sites in the United States comparing Keppra<sup>®</sup> 1000 mg/day (N=97), Keppra<sup>®</sup> 3000 mg/day (N=101), and placebo (N=95) given in equally divided doses twice daily. After a prospective baseline period of 12 weeks, patients were randomized to one of the three treatment groups described above. The 18-week treatment period consisted of a 6-week titration period, followed by a 12-week fixed dose evaluation period, during which concomitant AED regimens were held constant. The primary measure of effectiveness was a between group comparison of the percent reduction in weekly partial seizure frequency relative to placebo over the entire randomized treatment period (titration + evaluation period). Secondary outcome variables included the responder rate (incidence of patients with ≥50% reduction from baseline in partial onset seizure frequency). The results of the analysis of Study 1 are displayed in Table 1.

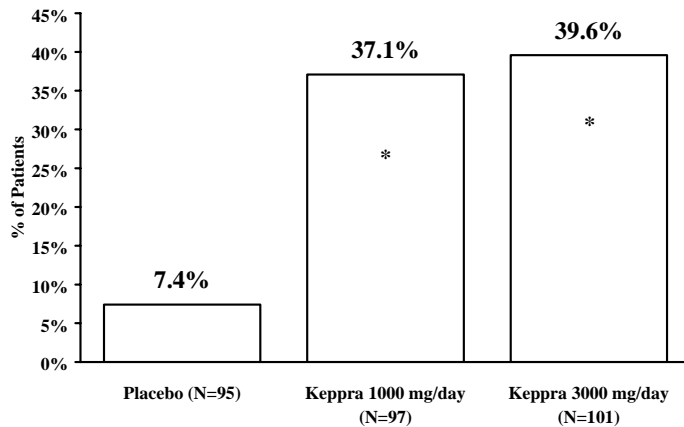
Table 1. Reduction In Weekly Frequency Of Partial Onset Seizures In Study 1

	Placebo (N=95)	Keppra <sup>®</sup> 1000 mg/day (N=97)	Keppra <sup>®</sup> 3000 mg/day (N=101)
Percent reduction in partial seizure frequency over placebo	–	26.1%*	30.1%*

\*  $P < 0.001$

The percentage of patients (y-axis) who achieved  $\geq 50\%$  reduction in weekly seizure rates from baseline in partial onset seizure frequency over the entire randomized treatment period (titration + evaluation period) within the three treatment groups (x-axis) is presented in Figure 1.

Figure 1. Responder Rate ( $\geq 50\%$  Reduction From Baseline) In Study 1



\* $P < 0.001$  versus placebo.

## Study 2

Study 2 was a double-blind, placebo-controlled, crossover study conducted at 62 centers in Europe comparing Keppra<sup>®</sup> 1000 mg/day (N=106), Keppra<sup>®</sup> 2000 mg/day (N=105), and placebo (N=111) given in equally divided doses twice daily.

The first period of the study (Period A) was designed to be analyzed as a parallel-group study. After a prospective baseline period of up to 12 weeks, patients were randomized to one of the three treatment groups described above. The 16-week treatment period consisted of the 4-week titration period followed by a 12-week fixed dose evaluation period, during which concomitant AED regimens were held constant. The primary measure of effectiveness was a between group comparison of the percent reduction in weekly partial seizure frequency relative to placebo over the entire randomized treatment period (titration + evaluation period). Secondary outcome

variables included the responder rate (incidence of patients with  $\geq 50\%$  reduction from baseline in partial onset seizure frequency). The results of the analysis of Period A are displayed in Table 2.

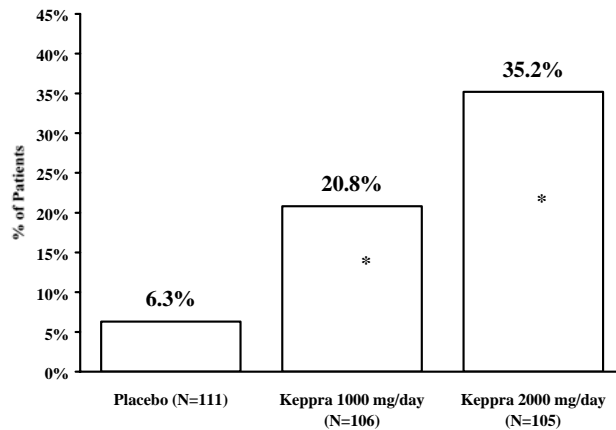
**Table 2. Reduction In Weekly Frequency Of Partial Onset Seizures In Study 2: Period A**

	Placebo (N=111)	Keppra <sup>®</sup> 1000 mg/day (N=106)	Keppra <sup>®</sup> 2000 mg/day (N=105)
Percent reduction in partial seizure frequency over placebo	–	17.1%*	21.4%*

\*  $P \leq 0.001$

The percentage of patients (y-axis) who achieved  $\geq 50\%$  reduction in weekly seizure rates from baseline in partial onset seizure frequency over the entire randomized treatment period (titration + evaluation period) within the three treatment groups (x-axis) is presented in Figure 2.

**Figure 2. Responder Rate ( $\geq 50\%$  Reduction From Baseline) In Study 2: Period A**



\* $P < 0.001$  versus placebo.

The comparison of Keppra<sup>®</sup> 2000 mg/day to Keppra<sup>®</sup> 1000 mg/day for responder rate was statistically significant ( $P=0.02$ ). Analysis of the trial as a cross-over yielded similar results.

### Study 3

Study 3 was a double-blind, placebo-controlled, parallel-group study conducted at 47 centers in Europe comparing Keppra<sup>®</sup> 3000 mg/day (N=180) and placebo (N=104) in patients with refractory partial onset seizures, with or without secondary generalization, receiving only one concomitant AED. Study drug was given in two divided doses. After a prospective baseline period of 12 weeks, patients were randomized to one of two treatment groups described above.

The 16-week treatment period consisted of a 4-week titration period, followed by a 12-week fixed dose evaluation period, during which concomitant AED doses were held constant. The primary measure of effectiveness was a between group comparison of the percent reduction in weekly seizure frequency relative to placebo over the entire randomized treatment period (titration + evaluation period). Secondary outcome variables included the responder rate (incidence of patients with  $\geq 50\%$  reduction from baseline in partial onset seizure frequency). Table 3 displays the results of the analysis of Study 3.

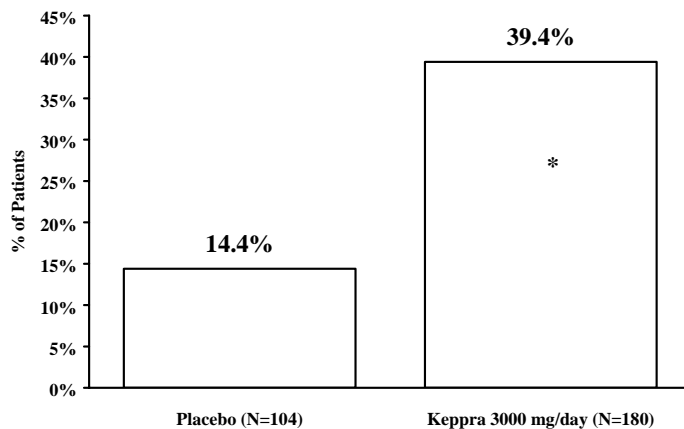
Table 3. Reduction In Weekly Frequency Of Partial Onset Seizures In Study 3

	Placebo (N=104)	Keppra <sup>®</sup> 3000 mg/day (N=180)
Percent reduction in partial seizure frequency over placebo	–	23.0%*

\*  $P < 0.001$

The percentage of patients (y-axis) who achieved  $\geq 50\%$  reduction in weekly seizure rates from baseline in partial onset seizure frequency over the entire randomized treatment period (titration + evaluation period) within the two treatment groups (x-axis) is presented in Figure 3.

Figure 3. Responder Rate ( $\geq 50\%$  Reduction From Baseline) In Study 3



\* $P < 0.001$  versus placebo.

### **Effectiveness In Partial Onset Seizures In Pediatric Patients With Epilepsy**

The effectiveness of Keppra<sup>®</sup> as adjunctive therapy (added to other antiepileptic drugs) in pediatric patients was established in one multicenter, randomized double-blind, placebo-controlled

study, conducted at 60 sites in North America, in children 4 to 16 years of age with partial seizures uncontrolled by standard antiepileptic drugs (AEDs). Eligible patients on a stable dose



of 1-2 AEDs, who still experienced at least 4 partial onset seizures during the 4 weeks prior to screening, as well as at least 4 partial onset seizures in each of the two 4-week baseline periods, were randomized to receive either Keppra® or placebo. The enrolled population included 198 patients

(Keppra® N=101, placebo N=97) with refractory partial onset seizures, whether or not secondarily generalized. The study consisted of an 8-week baseline period and 4-week titration period followed by a 10-week evaluation period. Dosing was initiated at a dose of 20 mg/kg/day in two divided doses. During the treatment period, Keppra® doses were adjusted in 20 mg/kg/day increments, at 2-week intervals to the target dose of 60 mg/kg/day.

The primary measure of effectiveness was a between group comparison of the percent reduction in weekly partial seizure frequency relative to placebo over the entire 14-week randomized treatment period (titration + evaluation period). Secondary outcome variables included the responder rate (incidence of patients with ≥50% reduction from baseline in partial onset seizure frequency per week). Table 4 displays the results of this study.

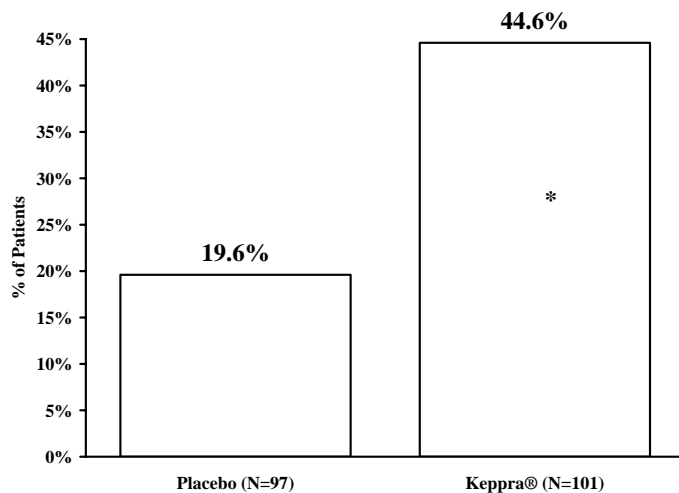
Table 4. Reduction In Weekly Frequency Of Partial Onset Seizures

	Placebo (N=97)	Keppra® (N=101)
Percent reduction in partial seizure frequency over placebo	-	26.8%*

\* P=0.0002

The percentage of patients (y-axis) who achieved ≥50% reduction in weekly seizure rates from baseline in partial onset seizure frequency over the entire randomized treatment period (titration + evaluation period) within the two treatment groups (x-axis) is presented in Figure 4.

Figure 4. Responder Rate (≥50% Reduction From Baseline)



\* $P=0.0002$  versus placebo.

## INDICATIONS AND USAGE

Keppra<sup>®</sup> (levetiracetam) is indicated as adjunctive therapy in the treatment of partial onset seizures in adults and children 4 years of age and older with epilepsy.

## CONTRAINDICATIONS

This product should not be administered to patients who have previously exhibited hypersensitivity to levetiracetam or any of the inactive ingredients in Keppra<sup>®</sup> tablets or oral solution.

## WARNINGS

### Neuropsychiatric Adverse Events

#### Adults

In adults, Keppra<sup>®</sup> use is associated with the occurrence of central nervous system adverse events that can be classified into the following categories: 1) somnolence and fatigue, 2) coordination difficulties, and 3) behavioral abnormalities.

In controlled trials of adult patients with epilepsy, 14.8% of Keppra<sup>®</sup> treated patients reported somnolence, compared to 8.4% of placebo patients. There was no clear dose response up to 3000 mg/day. In a study where there was no titration, about 45% of patients receiving 4000 mg/day reported somnolence. The somnolence was considered serious in 0.3% of the treated patients, compared to 0% in the placebo group. About 3% of Keppra<sup>®</sup> treated patients discontinued treatment due to somnolence, compared to 0.7% of placebo patients. In 1.4% of treated patients and in 0.9% of placebo patients the dose was reduced, while 0.3% of the treated patients were hospitalized due to somnolence.

In controlled trials of adult patients with epilepsy, 14.7% of treated patients reported asthenia, compared to 9.1% of placebo patients. Treatment was discontinued in 0.8% of treated patients as compared to 0.5% of placebo patients. In 0.5% of treated patients and in 0.2% of placebo patients the dose was reduced.

A total of 3.4% of Keppra<sup>®</sup> treated patients experienced coordination difficulties, (reported as either ataxia, abnormal gait, or incoordination) compared to 1.6% of placebo patients. A total of 0.4% of patients in controlled trials discontinued Keppra<sup>®</sup> treatment due to ataxia, compared to 0% of placebo patients. In 0.7% of treated patients and in 0.2% of placebo patients the dose was reduced due to coordination difficulties, while one of the treated patients was hospitalized due to worsening of pre-existing ataxia.

Somnolence, asthenia and coordination difficulties occurred most frequently within the first 4 weeks of treatment.

In controlled trials of patients with epilepsy, 5 (0.7%) of Keppra<sup>®</sup> treated patients experienced psychotic symptoms compared to 1 (0.2%) placebo patient. Two (0.3%) Keppra<sup>®</sup> treated patients were hospitalized and their treatment was discontinued. Both events, reported as psychosis, developed within the first week of treatment and resolved within 1 to 2 weeks following treatment discontinuation. Two other events, reported as hallucinations, occurred after 1-5 months and resolved within 2-7 days while the patients remained on treatment. In one patient experiencing psychotic depression occurring within a month, symptoms resolved within 45 days while the patient continued treatment. A total of 13.3% of Keppra<sup>®</sup> patients experienced other behavioral symptoms (reported as aggression, agitation, anger, anxiety, apathy, depersonalization, depression, emotional lability, hostility, irritability etc.) compared to 6.2% of placebo patients. Approximately half of these patients reported these events within the first 4 weeks. A total of 1.7% of treated patients discontinued treatment due to these events, compared to 0.2% of placebo patients. The treatment dose was reduced in 0.8% of treated patients and in 0.5% of placebo patients. A total of 0.8% of treated patients had a serious behavioral event (compared to 0.2% of placebo patients) and were hospitalized.

In addition, 4 (0.5%) of treated patients attempted suicide compared to 0% of placebo patients. One of these patients successfully committed suicide. In the other 3 patients, the events did not lead to discontinuation or dose reduction. The events occurred after patients had been treated for between 4 weeks and 6 months.

## Pediatric Patients

In pediatric patients, Keppra<sup>®</sup> is associated with somnolence, fatigue, and behavioral abnormalities.

In the double-blind, controlled trial in children with epilepsy, 22.8% of Keppra<sup>®</sup>-treated patients experienced somnolence, compared to 11.3% of placebo patients. The design of the study prevented accurately assessing dose-response effects. No patient discontinued treatment for somnolence. In about 3.0% of Keppra<sup>®</sup>-treated patients and in 3.1% of placebo patients the dose was reduced as a result of somnolence.

Asthenia was reported in 8.9% of Keppra<sup>®</sup>-treated patients, compared to 3.1% of placebo patients. No patient discontinued treatment for asthenia, but asthenia led to a dose reduction in 3.0% of Keppra<sup>®</sup>-treated patients compared to 0% of placebo patients.

A total of 37.6% of the Keppra<sup>®</sup>-treated patients experienced behavioral symptoms (reported as agitation, anxiety, apathy, depersonalization, depression, emotional lability, hostility, hyperkinesia, nervousness, neurosis, and personality disorder), compared to 18.6% of placebo patients. Hostility was reported in 11.9% of Keppra<sup>®</sup>-treated patients, compared to 6.2% of placebo patients. Nervousness was reported in 9.9% of Keppra<sup>®</sup>-treated patients, compared to

2.1% of placebo patients. Depression was reported in 3.0% of Keppra<sup>®</sup>-treated patients, compared to 1.0% of placebo patients. One Keppra<sup>®</sup>-treated patient experienced suicidal ideation.

A total of 3.0% of Keppra<sup>®</sup>-treated patients discontinued treatment due to psychotic and nonpsychotic adverse events, compared to 4.1% of placebo patients. Overall, 10.9% of Keppra<sup>®</sup>-treated patients experienced behavioral symptoms associated with discontinuation or dose reduction, compared to 6.2% of placebo patients.

### **Withdrawal Seizures**

Antiepileptic drugs, including Keppra<sup>®</sup>, should be withdrawn gradually to minimize the potential of increased seizure frequency.

## **PRECAUTIONS**

### **Hematologic Abnormalities**

#### Adults

Minor, but statistically significant, decreases compared to placebo in total mean RBC count ( $0.03 \times 10^6/\text{mm}^3$ ), mean hemoglobin (0.09 g/dL), and mean hematocrit (0.38%), were seen in Keppra<sup>®</sup>-treated patients in controlled trials.

A total of 3.2% of treated and 1.8% of placebo patients had at least one possibly significant ( $\leq 2.8 \times 10^9/\text{L}$ ) decreased WBC, and 2.4% of treated and 1.4% of placebo patients had at least one possibly significant ( $\leq 1.0 \times 10^9/\text{L}$ ) decreased neutrophil count. Of the treated patients with a low neutrophil count, all but one rose towards or to baseline with continued treatment. No patient was discontinued secondary to low neutrophil counts.

#### **Pediatric Patients**

Minor, but statistically significant, decreases in WBC and neutrophil counts were seen in Keppra<sup>®</sup>-treated patients as compared to placebo. The mean decreases from baseline in the Keppra<sup>®</sup>-treated group were  $-0.4 \times 10^9/\text{L}$  and  $-0.3 \times 10^9/\text{L}$ , respectively, whereas there were small increases in the placebo group. Mean relative lymphocyte counts increased by 1.7% in Keppra<sup>®</sup>-treated patients, compared to a decrease of 4% in placebo patients (statistically significant).

In the well-controlled trial, more Keppra<sup>®</sup>-treated patients had a possibly clinically significant abnormally low WBC value (3.0% Keppra<sup>®</sup>-treated versus 0% placebo), however, there was no apparent difference between treatment groups with respect to neutrophil count (5.0% Keppra<sup>®</sup>-treated versus 4.2% placebo). No patient was discontinued secondary to low WBC or neutrophil counts.

## Hepatic Abnormalities

There were no meaningful changes in mean liver function tests (LFT) in controlled trials in adult or pediatric patients; lesser LFT abnormalities were similar in drug and placebo treated patients in controlled trials (1.4%). No adult or pediatric patients were discontinued from controlled trials for LFT abnormalities except for 1 (0.07%) adult epilepsy patient receiving open treatment.

## Information For Patients

Patients should be instructed to take Keppra<sup>®</sup> only as prescribed.

Patients should be advised to notify their physician if they become pregnant or intend to become pregnant during therapy.

Patients should be advised that Keppra<sup>®</sup> may cause dizziness and somnolence. Accordingly, patients should be advised not to drive or operate machinery or engage in other hazardous activities until they have gained sufficient experience on Keppra<sup>®</sup> to gauge whether it adversely affects their performance of these activities.

Physicians should advise patients and caregivers to read the patient information leaflet which appears as the last section of the labeling.

## Laboratory Tests

Although most laboratory tests are not systematically altered with Keppra<sup>®</sup> treatment, there have been relatively infrequent abnormalities seen in hematologic parameters and liver function tests.

## Drug Interactions

*In vitro* data on metabolic interactions indicate that Keppra<sup>®</sup> is unlikely to produce, or be subject to, pharmacokinetic interactions. Levetiracetam and its major metabolite, at concentrations well above C<sub>max</sub> levels achieved within the therapeutic dose range, are neither inhibitors of nor high affinity substrates for human liver cytochrome P450 isoforms, epoxide hydrolase or UDP-glucuronidation enzymes. In addition, levetiracetam does not affect the *in vitro* glucuronidation of valproic acid.

Levetiracetam circulates largely unbound (<10% bound) to plasma proteins; clinically significant interactions with other drugs through competition for protein binding sites are therefore unlikely.

Potential pharmacokinetic interactions were assessed in clinical pharmacokinetic studies (phenytoin, valproate, oral contraceptive, digoxin, warfarin, probenecid) and through pharmacokinetic screening in the placebo-controlled clinical studies in epilepsy patients.

### Drug-Drug Interactions Between Keppra<sup>®</sup> And Other Antiepileptic Drugs (AEDs)

#### *Phenytoin*

Keppra<sup>®</sup> (3000 mg daily) had no effect on the pharmacokinetic disposition of phenytoin in patients with refractory epilepsy. Pharmacokinetics of levetiracetam were also not affected by phenytoin.

### *Valproate*

Keppra<sup>®</sup> (1500 mg twice daily) did not alter the pharmacokinetics of valproate in healthy volunteers. Valproate 500 mg twice daily did not modify the rate or extent of levetiracetam absorption or its plasma clearance or urinary excretion. There also was no effect on exposure to and the excretion of the primary metabolite, ucb L057.

Potential drug interactions between Keppra<sup>®</sup> and other AEDs (carbamazepine, gabapentin, lamotrigine, phenobarbital, phenytoin, primidone and valproate) were also assessed by evaluating the serum concentrations of levetiracetam and these AEDs during placebo-controlled clinical studies. These data indicate that levetiracetam does not influence the plasma concentration of other AEDs and that these AEDs do not influence the pharmacokinetics of levetiracetam.

### *Effect of AEDs in Pediatric Patients*

There was about a 22% increase of apparent total body clearance of levetiracetam when it was co-administered with enzyme-inducing AEDs. Dose adjustment is not recommended. Levetiracetam had no effect on plasma concentrations of carbamazepine, valproate, topiramate, or lamotrigine.

### Other Drug Interactions

#### *Oral Contraceptives*

Keppra<sup>®</sup> (500 mg twice daily) did not influence the pharmacokinetics of an oral contraceptive containing 0.03 mg ethinyl estradiol and 0.15 mg levonorgestrel, or of the luteinizing hormone and progesterone levels, indicating that impairment of contraceptive efficacy is unlikely. Coadministration of this oral contraceptive did not influence the pharmacokinetics of levetiracetam.

#### *Digoxin*

Keppra<sup>®</sup> (1000 mg twice daily) did not influence the pharmacokinetics and pharmacodynamics (ECG) of digoxin given as a 0.25 mg dose every day. Coadministration of digoxin did not influence the pharmacokinetics of levetiracetam.

#### *Warfarin*

Keppra<sup>®</sup> (1000 mg twice daily) did not influence the pharmacokinetics of R and S warfarin. Prothrombin time was not affected by levetiracetam. Coadministration of warfarin did not affect the pharmacokinetics of levetiracetam.

#### *Probenecid*

Probenecid, a renal tubular secretion blocking agent, administered at a dose of 500 mg four times a day, did not change the pharmacokinetics of levetiracetam 1000 mg twice daily.  $C_{\max}^{\text{ss}}$  of the metabolite, ucb L057, was approximately doubled in the presence of probenecid while the fraction of drug excreted unchanged in the urine remained the same. Renal clearance of ucb

L057 in the presence of probenecid decreased 60%, probably related to competitive inhibition of tubular secretion of ucb L057. The effect of Keppra<sup>®</sup> on probenecid was not studied.

## **Carcinogenesis, Mutagenesis, Impairment Of Fertility**

### Carcinogenesis

Rats were dosed with levetiracetam in the diet for 104 weeks at doses of 50, 300 and 1800 mg/kg/day. The highest dose corresponds to 6 times the maximum recommended daily human dose (MRHD) of 3000 mg on a mg/m<sup>2</sup> basis and it also provided systemic exposure (AUC) approximately 6 times that achieved in humans receiving the MRHD. There was no evidence of carcinogenicity. A study was conducted in which mice received levetiracetam in the diet for 80 weeks at doses of 60, 240 and 960 mg/kg/day (high dose is equivalent to 2 times the MRHD on a mg/m<sup>2</sup> or exposure basis). Although no evidence for carcinogenicity was seen, the potential for a carcinogenic response has not been fully evaluated in that species because adequate doses have not been studied.

### Mutagenesis

Levetiracetam was not mutagenic in the Ames test or in mammalian cells *in vitro* in the Chinese hamster ovary/HGPRT locus assay. It was not clastogenic in an *in vitro* analysis of metaphase chromosomes obtained from Chinese hamster ovary cells or in an *in vivo* mouse micronucleus assay. The hydrolysis product and major human metabolite of levetiracetam (ucb L057) was not mutagenic in the Ames test or the *in vitro* mouse lymphoma assay.

### Impairment Of Fertility

No adverse effects on male or female fertility or reproductive performance were observed in rats at doses up to 1800 mg/kg/day (approximately 6 times the maximum recommended human dose on a mg/m<sup>2</sup> or exposure basis).

## **Pregnancy**

### Pregnancy Category C

In animal studies, levetiracetam produced evidence of developmental toxicity at doses similar to or greater than human therapeutic doses.

Administration to female rats throughout pregnancy and lactation was associated with increased incidences of minor fetal skeletal abnormalities and retarded offspring growth pre- and/or postnatally at doses  $\geq 350$  mg/kg/day (approximately equivalent to the maximum recommended human dose of 3000 mg [MRHD] on a mg/m<sup>2</sup> basis) and with increased pup mortality and offspring behavioral alterations at a dose of 1800 mg/kg/day (6 times the MRHD on a mg/m<sup>2</sup> basis). The developmental no effect dose was 70 mg/kg/day (0.2 times the MRHD on a mg/m<sup>2</sup> basis). There was no overt maternal toxicity at the doses used in this study.

Treatment of pregnant rabbits during the period of organogenesis resulted in increased embryofetal mortality and increased incidences of minor fetal skeletal abnormalities at doses  $\geq 600$  mg/kg/day (approximately 4 times MRHD on a mg/m<sup>2</sup> basis) and in decreased fetal weights and increased incidences of fetal malformations at a dose of 1800 mg/kg/day (12 times

the MRHD on a mg/m<sup>2</sup> basis). The developmental no effect dose was 200 mg/kg/day (1.3 times the MRHD on a mg/m<sup>2</sup> basis). Maternal toxicity was also observed at 1800 mg/kg/day.

When pregnant rats were treated during the period of organogenesis, fetal weights were decreased and the incidence of fetal skeletal variations was increased at a dose of 3600 mg/kg/day (12 times the MRHD). 1200 mg/kg/day (4 times the MRHD) was a developmental no effect dose. There was no evidence of maternal toxicity in this study.

Treatment of rats during the last third of gestation and throughout lactation produced no adverse developmental or maternal effects at doses of up to 1800 mg/kg/day (6 times the MRHD on a mg/m<sup>2</sup> basis).

There are no adequate and well-controlled studies in pregnant women. Keppra<sup>®</sup> should be used during pregnancy only if the potential benefit justifies the potential risk to the fetus.

### **Keppra<sup>®</sup> Pregnancy Registry**

UCB Pharma, Inc. has established the Keppra<sup>®</sup> Pregnancy Registry to advance scientific knowledge about safety and outcomes associated with pregnant women being treated with Keppra<sup>®</sup>. To ensure broad program access and reach, either a healthcare provider or the patient can initiate enrollment in the Keppra<sup>®</sup> Pregnancy Registry by calling (888) 537-7734 (toll free). Patients may also enroll in the North American Antiepileptic Drug Pregnancy Registry by calling (888) 233-2334 (toll free).

### **Labor And Delivery**

The effect of Keppra<sup>®</sup> on labor and delivery in humans is unknown.

### **Nursing Mothers**

Levetiracetam is excreted in breast milk. Because of the potential for serious adverse reactions in nursing infants from Keppra<sup>®</sup>, a decision should be made whether to discontinue nursing or discontinue the drug, taking into account the importance of the drug to the mother.

### **Pediatric Use**

Safety and effectiveness in patients below 4 years of age have not been established.

Studies of levetiracetam in juvenile rats (dosing from day 4 through day 52 of age) and dogs (dosing from week 3 through week 7 of age) at doses of up to 1800 mg/kg/day (approximately 7 and 24 times, respectively, the maximum recommended pediatric dose of 60 mg/kg/day on a mg/m<sup>2</sup> basis) did not indicate a potential for age-specific toxicity.

### **Geriatric Use**

Of the total number of subjects in clinical studies of levetiracetam, 347 were 65 and over. No overall differences in safety were observed between these subjects and younger subjects. There were insufficient numbers of elderly subjects in controlled trials of epilepsy to adequately assess the effectiveness of Keppra<sup>®</sup> in these patients.



A study in 16 elderly subjects (age 61-88 years) with oral administration of single dose and multiple twice-daily doses for 10 days showed no pharmacokinetic differences related to age alone.

Levetiracetam is known to be substantially excreted by the kidney, and the risk of adverse reactions to this drug may be greater in patients with impaired renal function. Because elderly patients are more likely to have decreased renal function, care should be taken in dose selection, and it may be useful to monitor renal function.

### **Use In Patients With Impaired Renal Function**

Clearance of levetiracetam is decreased in patients with renal impairment and is correlated with creatinine clearance. Caution should be taken in dosing patients with moderate and severe renal impairment and in patients undergoing hemodialysis. The dosage should be reduced in patients with impaired renal function receiving Keppra<sup>®</sup> and supplemental doses should be given to patients after dialysis (see CLINICAL PHARMACOLOGY and DOSAGE AND ADMINISTRATION, Adult Patients with Impaired Renal Function).

### **ADVERSE REACTIONS**

In well-controlled clinical studies in adults, the most frequently reported adverse events associated with the use of Keppra<sup>®</sup> in combination with other AEDs, not seen at an equivalent frequency among placebo-treated patients, were somnolence, asthenia, infection and dizziness. In the well-controlled pediatric clinical study, the adverse events most frequently reported with the use of Keppra<sup>®</sup> in combination with other AEDs, not seen at an equivalent frequency among placebo-treated patients, were somnolence, accidental injury, hostility, nervousness, and asthenia.

Table 5 lists treatment-emergent adverse events that occurred in at least 1% of adult epilepsy patients treated with Keppra<sup>®</sup> participating in placebo-controlled studies and were numerically more common than in patients treated with placebo. Table 6 lists treatment-emergent adverse events that occurred in at least 2% of pediatric epilepsy patients (ages 4-16 years) treated with Keppra<sup>®</sup> participating in the placebo-controlled study and were numerically more common than in pediatric patients treated with placebo. In these studies, either Keppra<sup>®</sup> or placebo was added to concurrent AED therapy. Adverse events were usually mild to moderate in intensity.

The prescriber should be aware that these figures, obtained when Keppra<sup>®</sup> was added to concurrent AED therapy, cannot be used to predict the frequency of adverse experiences in the course of usual medical practice where patient characteristics and other factors may differ from those prevailing during clinical studies. Similarly, the cited frequencies cannot be directly compared with figures obtained from other clinical investigations involving different treatments, uses, or investigators. An inspection of these frequencies, however, does provide the prescriber with one basis to estimate the relative contribution of drug and non-drug factors to the adverse event incidences in the population studied.

**Table 5 : Incidence (%) Of Treatment-Emergent Adverse Events In Placebo-Controlled, Add-On Studies In Adults By Body System (Adverse Events Occurred In At Least 1% Of Keppra®-Treated Patients And Occurred More Frequently Than Placebo-Treated Patients)**

<b>Body System/ Adverse Event</b>	<b>Keppra (N=769) %</b>	<b>Placebo (N=439) %</b>
<b>Body as a Whole</b>		
Asthenia	15	9
Headache	14	13
Infection	13	8
Pain	7	6
<b>Digestive System</b>		
Anorexia	3	2
<b>Nervous System</b>		
Amnesia	2	1
Anxiety	2	1
Ataxia	3	1
Depression	4	2
Dizziness	9	4
Emotional Lability	2	0
Hostility	2	1
Nervousness	4	2
Paresthesia	2	1
Somnolence	15	8
Vertigo	3	1
<b>Respiratory System</b>		
Cough Increased	2	1
Pharyngitis	6	4
Rhinitis	4	3
Sinusitis	2	1
<b>Special Senses</b>		
Diplopia	2	1

Other events reported by 1% or more of adult patients treated with Keppra® but as or more frequent in the placebo group were the following: abdominal pain, accidental injury, amblyopia, arthralgia, back pain, bronchitis, chest pain, confusion, constipation, convulsion, diarrhea, drug level increased, dyspepsia, ecchymosis, fever, flu syndrome, fungal infection, gastroenteritis, gingivitis, grand mal convulsion, insomnia, nausea, otitis media, rash, thinking abnormal, tremor, urinary tract infection, vomiting and weight gain.

**Table 6. Incidence (%) Of Treatment-Emergent Adverse Events In A Placebo-Controlled, Add-On Study In Pediatric Patients Ages 4-16 Years By Body System (Adverse Events Occurred In At Least 2% Of Keppra®-Treated Patients And Occurred More Frequently Than Placebo-Treated Patients.)**

<b>Body System/ Adverse Event</b>	<b>Keppra® (N=101) %</b>	<b>Placebo (N=97) %</b>
<b>Body as a Whole</b>		
Accidental Injury	17	10
Asthenia	9	3
Pain	6	3
Flu Syndrome	3	2
Face Edema	2	1
Neck Pain	2	1
Viral Infection	2	1
<b>Digestive System</b>		
Vomiting	15	13
Anorexia	13	8
Diarrhea	8	7
Gastroenteritis	4	2
Constipation	3	1
<b>Hemic and Lymphatic System</b>		
Ecchymosis	4	1
<b>Metabolic and Nutritional</b>		
Dehydration	2	1
<b>Nervous System</b>		
Somnolence	23	11
Hostility	12	6
Nervousness	10	2
Personality Disorder	8	7
Dizziness	7	2
Emotional Lability	6	4
Agitation	6	1
Depression	3	1
Vertigo	3	1
Reflexes Increased	2	1
Confusion	2	0
<b>Respiratory System</b>		
Rhinitis	13	8
Cough Increased	11	7
Pharyngitis	10	8
Asthma	2	1
<b>Skin and Appendages</b>		
Pruritis	2	0
Skin Discoloration	2	0
Vesiculobullous Rash	2	0
<b>Special Senses</b>		
Conjunctivitis	3	2
Amblyopia	2	0
Ear Pain	2	0
<b>Urogenital System</b>		
Albuminuria	4	0
Urine Abnormality	2	1

Other events occurring in 2% or more of pediatric patients treated with Keppra® but as or more frequent in the placebo group were the following: abdominal pain, allergic reaction, ataxia, convulsion, epistaxis, fever, headache, hyperkinesia, infection, insomnia, nausea, otitis media,

rash, sinusitis, status epilepticus (not otherwise specified), thinking abnormal, tremor, and urinary incontinence.

### Time Course Of Onset Of Adverse Events

Of the most frequently reported adverse events in adults, asthenia, somnolence and dizziness appeared to occur predominantly during the first 4 weeks of treatment with Keppra®.

### Discontinuation Or Dose Reduction In Well-Controlled Clinical Studies

In well-controlled clinical studies, 15.0% of patients receiving Keppra® and 11.6% receiving placebo either discontinued or had a dose reduction as a result of an adverse event. Table 7 lists the most common (>1%) adverse events that resulted in discontinuation or dose reduction.

Table 7 : Adverse Events That Most Commonly Resulted In Discontinuation Or Dose Reduction In Placebo-Controlled Studies In Adult Patients With Epilepsy

	Number (%)	
	Keppra® (N=769)	Placebo (N=439)
Asthenia	10 (1.3%)	3 (0.7%)
Convulsion	23 (3.0%)	15 (3.4%)
Dizziness	11 (1.4%)	0
Somnolence	34 (4.4%)	7 (1.6%)
Rash	0	5 (1.1%)

In the well-controlled pediatric clinical study, 16.8% of patients receiving Keppra® and 20.6% receiving placebo either discontinued or had a dose reduction as a result of an adverse event. The adverse events most commonly associated ( $\geq 3\%$  in patients receiving Keppra®) with discontinuation or dose reduction in the well-controlled study are presented in Table 8.

Table 8. Adverse Events Most Commonly Associated With Discontinuation Or Dose Reduction In The Placebo-Controlled Study In Pediatric Patients Ages 4-16 Years With Epilepsy

	Number (%)	
	Keppra® (N=101)	Placebo (N=97)
Somnolence	3 (3.0%)	3 (3.1%)
Hostility	7 (6.9%)	2 (2.1%)
Asthenia	3 (3.0%)	0 (0.0%)

## **Comparison Of Gender, Age And Race**

The overall adverse experience profile of Keppra<sup>®</sup> was similar between females and males. There are insufficient data to support a statement regarding the distribution of adverse experience reports by age and race.

## **Postmarketing Experience**

In addition to the adverse experiences listed above, the following have been reported in patients receiving marketed Keppra<sup>®</sup> worldwide. The listing is alphabetized: leukopenia, neutropenia, pancreatitis, pancytopenia (with bone marrow suppression identified in some of the cases) and thrombocytopenia. Alopecia has been reported with Keppra<sup>®</sup> use; recovery was observed in majority of cases where Keppra<sup>®</sup> was discontinued. There have been reports of suicidal behavior (including completed suicide) with marketed Keppra<sup>®</sup>. These adverse experiences have not been listed above, and data are insufficient to support an estimate of their incidence or to establish causation.

## **DRUG ABUSE AND DEPENDENCE**

The abuse and dependence potential of Keppra<sup>®</sup> has not been evaluated in human studies.

## **OVERDOSAGE**

### **Signs, Symptoms And Laboratory Findings Of Acute Overdosage In Humans**

The highest known dose of Keppra<sup>®</sup> received in the clinical development program was 6000 mg/day. Other than drowsiness, there were no adverse events in the few known cases of overdose in clinical trials. Cases of somnolence, agitation, aggression, depressed level of consciousness, respiratory depression and coma were observed with Keppra<sup>®</sup> overdoses in postmarketing use.

### **Treatment Or Management Of Overdose**

There is no specific antidote for overdose with Keppra<sup>®</sup>. If indicated, elimination of unabsorbed drug should be attempted by emesis or gastric lavage; usual precautions should be observed to maintain airway. General supportive care of the patient is indicated including monitoring of vital signs and observation of the patient's clinical status. A Certified Poison Control Center should be contacted for up to date information on the management of overdose with Keppra<sup>®</sup>.

### **Hemodialysis**

Standard hemodialysis procedures result in significant clearance of levetiracetam (approximately 50% in 4 hours) and should be considered in cases of overdose. Although hemodialysis has not been performed in the few known cases of overdose, it may be indicated by the patient's clinical state or in patients with significant renal impairment.

## **DOSAGE AND ADMINISTRATION**

Keppra<sup>®</sup> is indicated as adjunctive treatment of partial onset seizures in adults and children 4 years of age and older with epilepsy.

### Adults 16 Years and Older

In clinical trials, daily doses of 1000 mg, 2000 mg, and 3000 mg, given as twice-daily dosing, were shown to be effective. Although in some studies there was a tendency toward greater response with higher dose (see CLINICAL STUDIES), a consistent increase in response with increased dose has not been shown.

Treatment should be initiated with a daily dose of 1000 mg/day, given as twice-daily dosing (500 mg BID). Additional dosing increments may be given (1000 mg/day additional every 2 weeks) to a maximum recommended daily dose of 3000 mg. Doses greater than 3000 mg/day have been used in open-label studies for periods of 6 months and longer. There is no evidence that doses greater than 3000 mg/day confer additional benefit.

### **Pediatric Patients Ages 4 To <16 Years**

Treatment should be initiated with a daily dose of 20 mg/kg in 2 divided doses (10 mg/kg BID). The daily dose should be increased every 2 weeks by increments of 20 mg/kg to the recommended daily dose of 60 mg/kg (30 mg/kg BID). If a patient cannot tolerate a daily dose of 60 mg/kg, the daily dose may be reduced. In the clinical trial, the mean daily dose was 52 mg/kg. Patients with body weight  $\leq$  20 kg should be dosed with oral solution. Patients with body weight above 20 kg can be dosed with either tablets or oral solution. Table 9 below provides a guideline for tablet dosing based on weight during titration to 60 mg/kg/day. Only whole tablets should be administered.

Keppra<sup>®</sup> is given orally with or without food.

Table 9. Keppra® Tablet Weight-Based Dosing Guide For Children

Patient Weight	Daily Dose		
	20 mg/kg/day (BID dosing)	40 mg/kg/day (BID dosing)	60 mg/kg/day (BID dosing)
20.1-40 kg	500 mg/day (1 x 250 mg tablet BID)	1000 mg/day (1 x 500 mg tablet BID)	1500 mg/day (1 x 750 mg tablet BID)
>40 kg	1000 mg/day (1 x 500 mg tablet BID)	2000 mg/day (2 x 500 mg tablets BID)	3000 mg/day (2 x 750 mg tablets BID)

The following calculation should be used to determine the appropriate daily dose of oral solution for pediatric patients based on a daily dose of 20 mg/kg/day, 40 mg/kg/day or 60 mg/kg/day:

$$\text{Total daily dose (mL/day)} = \frac{\text{Daily dose (mg/kg/day)} \times \text{patient weight (kg)}}{100 \text{ mg/mL}}$$

A household teaspoon or tablespoon is not an adequate measuring device. It is recommended that a calibrated measuring device be obtained and used. Healthcare providers should recommend a device that can measure and deliver the prescribed dose accurately, and provide instructions for measuring the dosage.

## Adult Patients With Impaired Renal Function

Keppra<sup>®</sup> dosing must be individualized according to the patient's renal function status. Recommended doses and adjustment for dose for adults are shown in Table 10 . To use this dosing table, an estimate of the patient's creatinine clearance (CLcr) in mL/min is needed. CLcr in mL/min may be estimated from serum creatinine (mg/dL) determination using the following formula:

$$\text{CLcr} = \frac{[140 - \text{age (years)}] \times \text{weight (kg)}}{72 \times \text{serum creatinine (mg/dL)}} \quad (\times 0.85 \text{ for female patients})$$

Table 10 : Dosing Adjustment Regimen for Adult Patients with Impaired Renal Function

Group	Creatinine Clearance (mL/min)	Dosage (mg)	Frequency
Normal	> 80	500 to 1,500	Every 12 h
Mild	50 – 80	500 to 1,000	Every 12 h
Moderate	30 – 50	250 to 750	Every 12 h
Severe	< 30	250 to 500	Every 12 h
ESRD patients using dialysis ----		500 to 1,000	<sup>1</sup> Every 24 h

<sup>1</sup> Following dialysis, a 250 to 500 mg supplemental dose is recommended.

## HOW SUPPLIED

Keppra<sup>®</sup> (levetiracetam) tablets, 250 mg are blue, oblong-shaped, scored, film-coated tablets debossed with "ucb" and "250" on one side. They are supplied in containers of 120 tablets (NDC 50474-591-40).

Keppra<sup>®</sup> (levetiracetam) tablets, 500 mg are yellow, oblong-shaped, scored, film-coated tablets debossed with "ucb" and "500" on one side. They are supplied in containers of 120 tablets (NDC 50474-592-40).

Keppra<sup>®</sup> (levetiracetam) tablets, 750 mg are orange, oblong-shaped, scored, film-coated tablets debossed with "ucb" and "750" on one side. They are supplied in containers of 120 tablets (NDC 50474-593-40).

Keppra<sup>®</sup> (levetiracetam) oral solution 100 mg/mL is a clear, colorless, grape-flavored liquid. It is supplied in 16 fl oz white HDPE bottles (NDC 50474-001-48).

## STORAGE

Store at 25°C (77°F); excursions permitted to 15-30°C (59-86°F).  
[see USP Controlled Room Temperature]



## **FOR MEDICAL INFORMATION**

Contact: Medical Affairs Department

Phone: (800) 477-7877

Fax: (770) 970-8859

Tablets Manufactured by

UCB S.A.

B-1420 Braine-l'Alleud (Belgium)

Oral Solution Manufactured by

Mallinckrodt Inc.

Hobart, NY 13788

For UCB Pharma, Inc.

Smyrna, GA 30080

Rev. 14E 11/2004



## Patient Information

### **KEPPRA<sup>®</sup> (pronounced *KEPP-ruh*) (levetiracetam) 250 mg, 500 mg and 750 mg tablets and 100 mg/mL oral solution**

Read the Patient Information that comes with KEPPRA<sup>®</sup> before you start using it and each time you get a refill. There may be new information. This leaflet does not take the place of talking with your healthcare provider about your condition or your treatment.

Before taking your medicine, make sure you have received the correct medicine. Compare the name above with the name on your bottle and the appearance of your medicine with the description of KEPPRA<sup>®</sup> provided below. Contact your pharmacist immediately if you believe a dispensing error may have occurred.

#### **What is KEPPRA<sup>®</sup>?**

KEPPRA<sup>®</sup> is a medicine that is used to treat partial seizures in adults and children 4 years of age and older with epilepsy. It is used with other seizure medicines to help control your seizures. KEPPRA<sup>®</sup> comes in tablets and in liquid.

250 mg KEPPRA<sup>®</sup> tablets are blue, oblong-shaped, scored, film-coated tablets marked with “ucb” and “250” on one side.

500 mg KEPPRA<sup>®</sup> tablets are yellow, oblong-shaped, scored, film-coated tablets marked with “ucb” and “500” on one side.

750 mg KEPPRA<sup>®</sup> tablets are orange, oblong-shaped, scored, film-coated tablets marked with “ucb” and “750” on one side.

KEPPRA<sup>®</sup> oral solution is a clear, colorless, grape-flavored liquid.

#### **Who should not take KEPPRA<sup>®</sup>?**

Do not take KEPPRA<sup>®</sup> if you are allergic to any of its ingredients. The active ingredient is levetiracetam. See the end of this leaflet for a list of all the ingredients in KEPPRA<sup>®</sup>.

#### **Tell your healthcare provider:**

- **if you are pregnant or planning to become pregnant.** If you use KEPPRA<sup>®</sup> while you are pregnant, ask your healthcare provider about being in the Keppra<sup>®</sup> Pregnancy Registry. You can join this registry by calling (888) 537-7734 (toll free). You may also join the North American Antiepileptic Drug Pregnancy Registry by calling (888) 233-2334 (toll free).

- **if you are breast feeding.** KEPPRA<sup>®</sup> can pass into your milk and may harm your baby. You should choose to either take KEPPRA<sup>®</sup> or breast feed, but not both.
- **if you have kidney disease.** You may need a lower dose of KEPPRA<sup>®</sup>.
- **about all the medicines you take,** including prescription, nonprescription, vitamins, and herbal supplements.

KEPPRA<sup>®</sup> has not been approved for children below 4 years of age.

### **How should I take KEPPRA<sup>®</sup>?**

- Take KEPPRA<sup>®</sup> exactly as prescribed. KEPPRA<sup>®</sup> is usually taken twice a day. Once in the morning and once at night. Take KEPPRA<sup>®</sup> at the same times each day.
- Your healthcare provider may start you on a lower dose of KEPPRA<sup>®</sup> and increase it as your body gets used to the medicine.
- Take KEPPRA<sup>®</sup> with or without food. Swallow the tablets whole. Do not chew or crush tablets. Use the KEPPRA<sup>®</sup> oral solution if you cannot swallow tablets. Use a medicine dropper or medicine cup to measure KEPPRA<sup>®</sup> oral solution. **Do not use a teaspoon.** Ask your pharmacist for a medicine dropper or medicine cup to help you measure KEPPRA<sup>®</sup>.
- If your healthcare provider has given you KEPPRA<sup>®</sup> oral solution for your child, be sure to ask your pharmacist for a medicine syringe to help you measure the correct amount of KEPPRA<sup>®</sup> oral solution. Ask your pharmacist for instructions on how to properly use the medicine syringe or dosing device that has been provided to you.
- If you take too much KEPPRA<sup>®</sup> or overdose, call your local Poison Control Center or emergency room right away.
- Do not stop taking KEPPRA<sup>®</sup> or any other seizure medicine unless your healthcare provider told you to. Stopping a seizure medicine all at once can cause status epilepticus (seizures that will not stop), a very serious problem.
- Tell your healthcare provider if your seizures get worse or if you have any new types of seizures.
- Talk to your healthcare provider about what to do if you miss a dose.

### **What should I avoid while taking KEPPRA<sup>®</sup>?**

Do not drive, operate complex machinery or participate in other hazardous activities until you know how KEPPRA<sup>®</sup> affects you. KEPPRA<sup>®</sup> may make you dizzy or sleepy.

## What are the possible side effects of KEPPRA®?

### Adults

KEPPRA® may cause the following serious problems in adults. Call your healthcare provider right away if you get any of the following symptoms:

- **Extreme sleepiness, tiredness, and weakness.**
- **Problems with muscle coordination** (problems walking and moving).
- **Mood and behavior changes** such as aggression, agitation, anger, anxiety, apathy, depression, hostility, and irritability. A few people may get psychotic symptoms such as hallucinations (seeing or hearing things that are really not there). A few people may get thoughts of suicide (thoughts of killing yourself).

The most common side effects with KEPPRA® in adults are:

- sleepiness
- weakness
- dizziness
- infection

These side effects could happen at any time but happen most often within the first four weeks of treatment except for infection.

## Children

KEPPRA® may cause the following serious problems in children. Call your child's healthcare provider right away if they get any of the following symptoms:

- **Extreme sleepiness, tiredness and weakness.**
- **Mood and behavior changes** such as aggression, agitation, anger, anxiety, apathy, depression, hostility, and irritability.

The most common side effects with KEPPRA® in children are:

- sleepiness
- accidental injury
- hostility
- irritability
- weakness

These side effects could happen at any time.

These are not all the side effects of KEPPRA®. For more information, ask your healthcare provider or pharmacist. If you get any side effects that concern you, call your healthcare provider.

## General information about KEPPRA®.

Medicines are sometimes prescribed for conditions other than those described in patient information leaflets. Do not use KEPPRA® for a condition for which it was not prescribed. Do not give your KEPPRA® to other people, even if they have the same symptoms that you have. It may harm them.

Store KEPPRA® at room temperature away from heat and light. **Keep KEPPRA® and all medicines out of the reach of children.**

This leaflet summarizes the most important information about KEPPRA®. If you would like more information, talk with your healthcare provider. You can ask your healthcare provider or

pharmacist for information about KEPPRA<sup>®</sup> that is written for healthcare professionals. You can also get information about KEPPRA<sup>®</sup> at [www.keppra.com](http://www.keppra.com).

### **What are the ingredients of KEPPRA<sup>®</sup>?**

KEPPRA<sup>®</sup> tablets contain the labeled amount of levetiracetam. Inactive ingredients: colloidal silicon dioxide, corn starch, hydroxypropyl methylcellulose, magnesium stearate, polyethylene glycol 4000, povidone, talc, titanium dioxide and coloring agents.

The individual tablets contain the following coloring agents:

250 mg tablets: FD&C Blue No. 2,

500 mg tablets: yellow iron oxide,

750 mg tablets: FD&C Blue No. 2, FD&C Yellow No. 6 and red iron oxide.

KEPPRA<sup>®</sup> oral solution contains 100 mg of levetiracetam per mL. Inactive ingredients: ammonium glycyrrhizinate, citric acid monohydrate, glycerin, maltitol solution, methylparaben, potassium acesulfame, propylparaben, purified water, sodium citrate dihydrate and natural and artificial flavor.

KEPPRA<sup>®</sup> does not contain lactose or gluten. It does contain carbohydrates. The liquid is dye-free.

### **Rx Only**

This patient leaflet has been approved by the US Food and Drug Administration.

Distributed by  
UCB Pharma, Inc.  
Smyrna, GA 30080