

Agency for Toxic Substances and Disease Registry

Figure 19. Air modeling receptor locations

Tarpon Springs, Florida

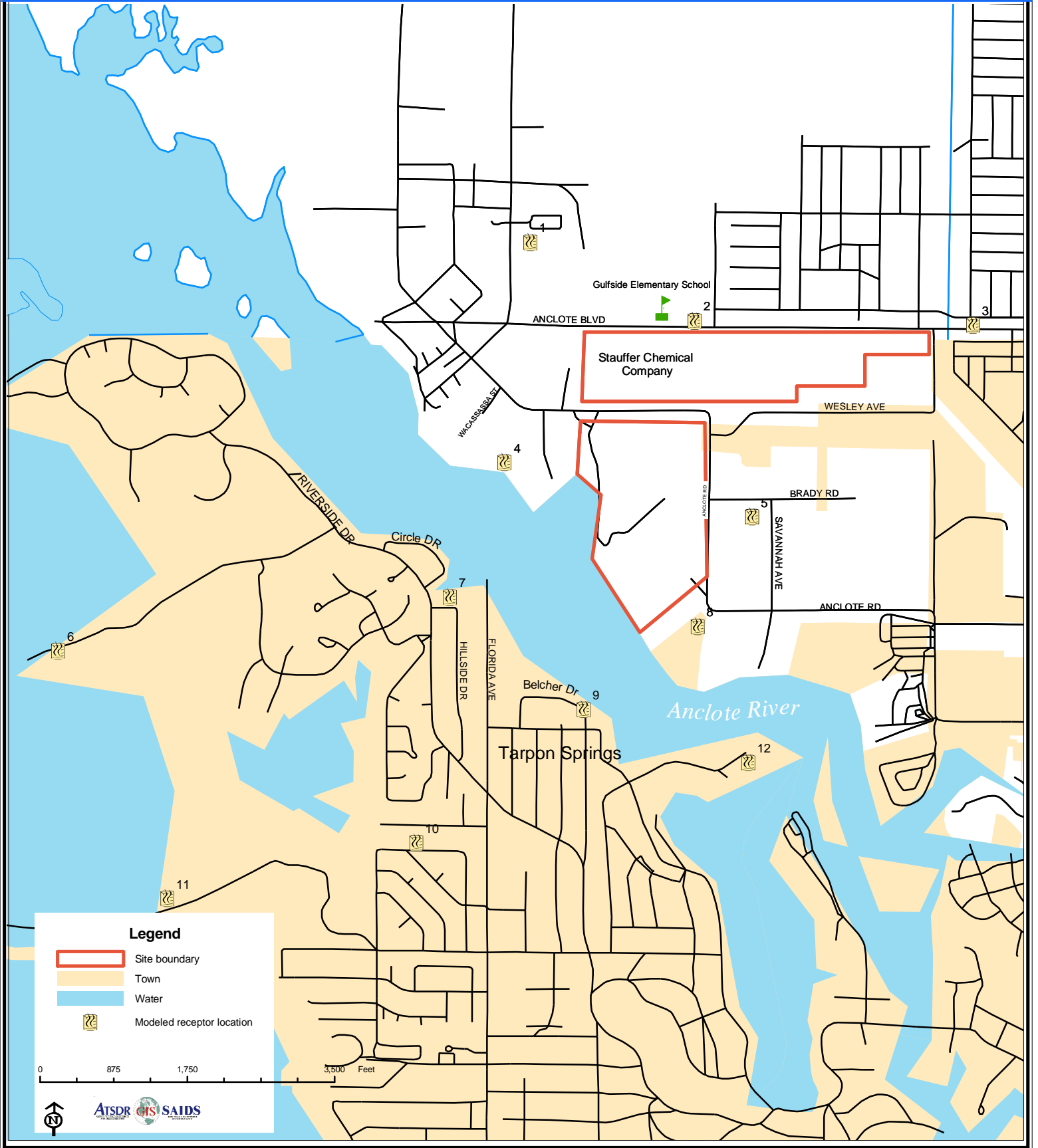


Figure 20. Hourly Sulfur Dioxide Levels From July 1977 to August 1981

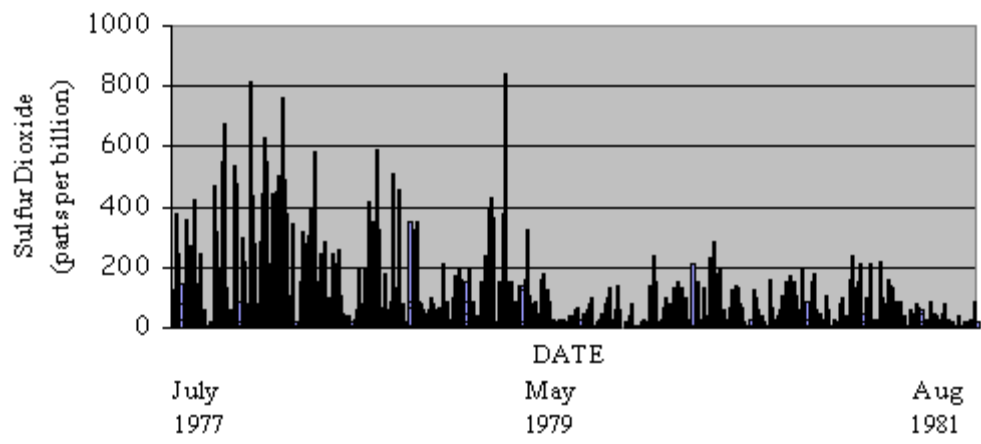
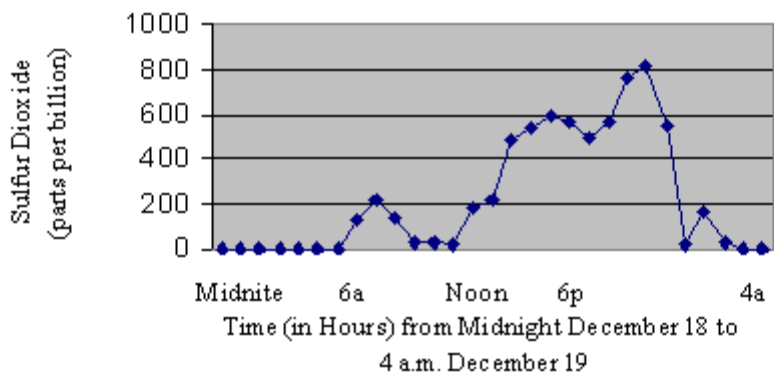
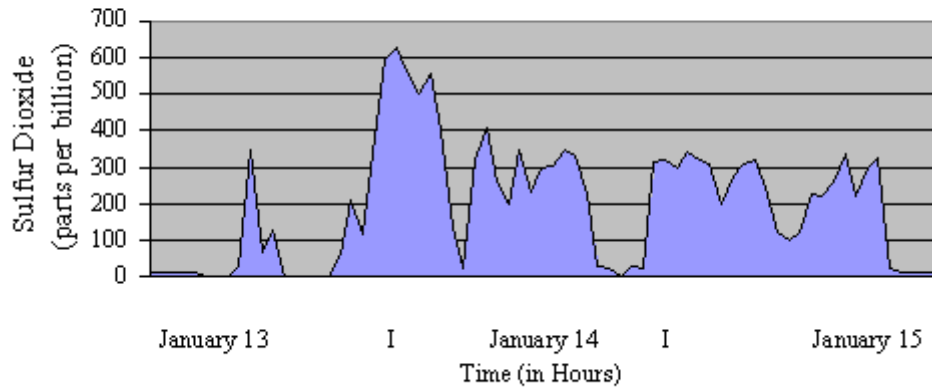


Figure 21. Hourly Sulfur Dioxide Levels on December 18, 1977



**Figure 22. Hourly Sulfur Dioxide Levels Over 3 Days
In January 1978**



**Figure 23. Hourly Sulfur Dioxide Levels on
December 26, 1977**

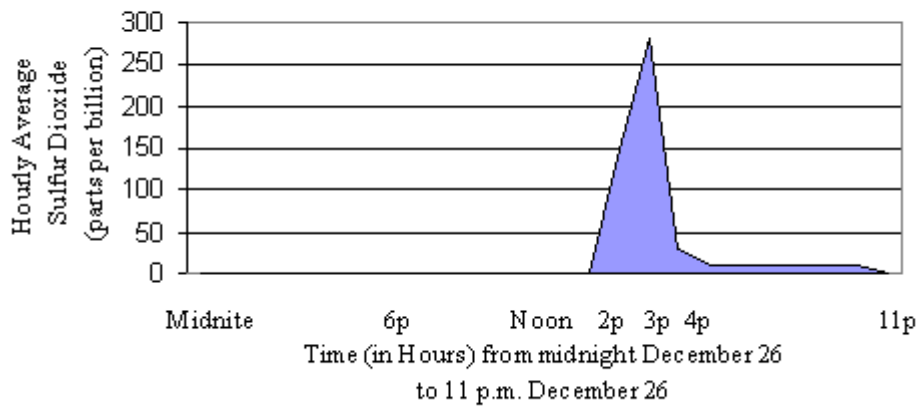


Figure 24. Anclothe Road monitoring station showing 1,540 feet radius from kiln

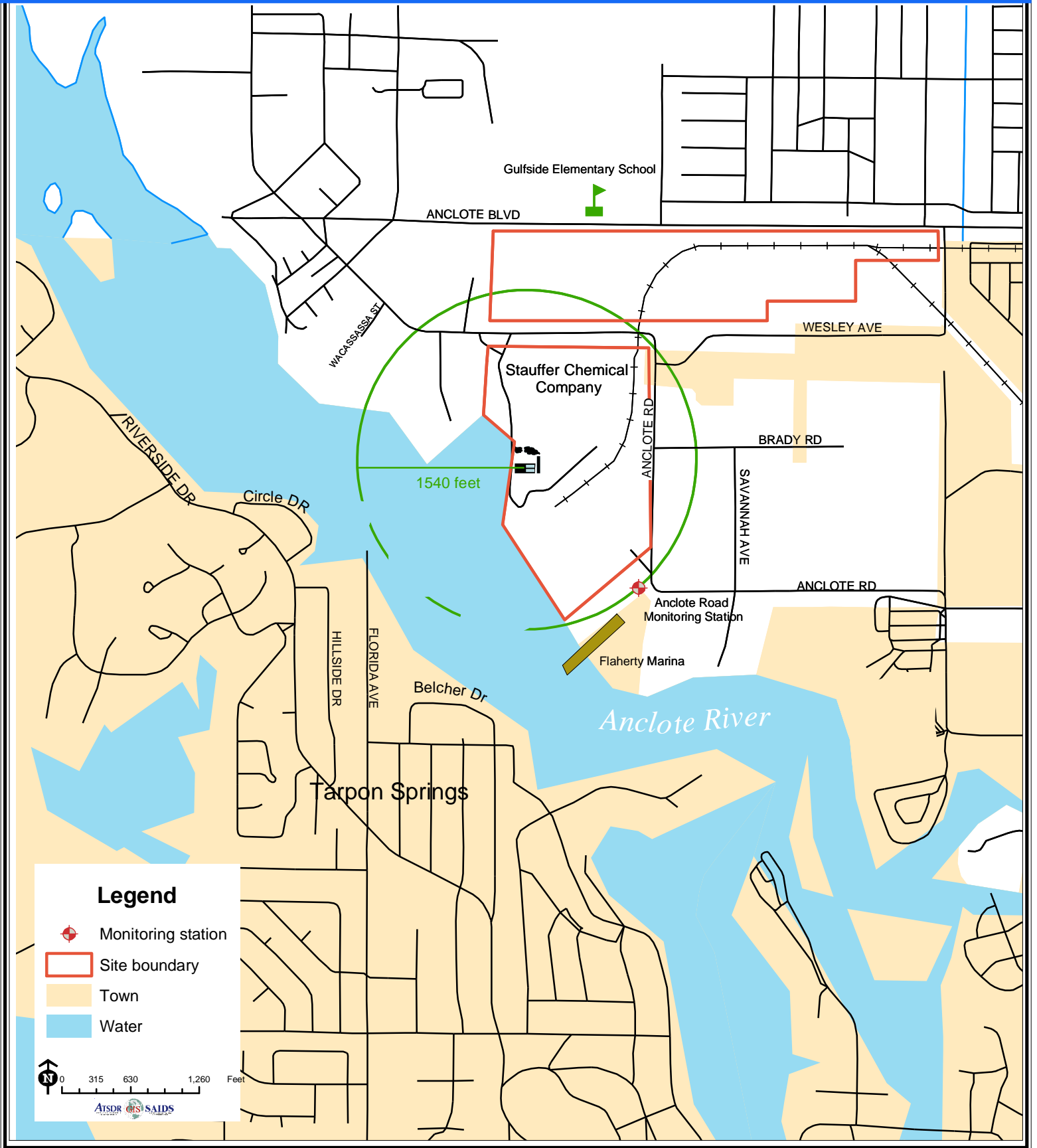


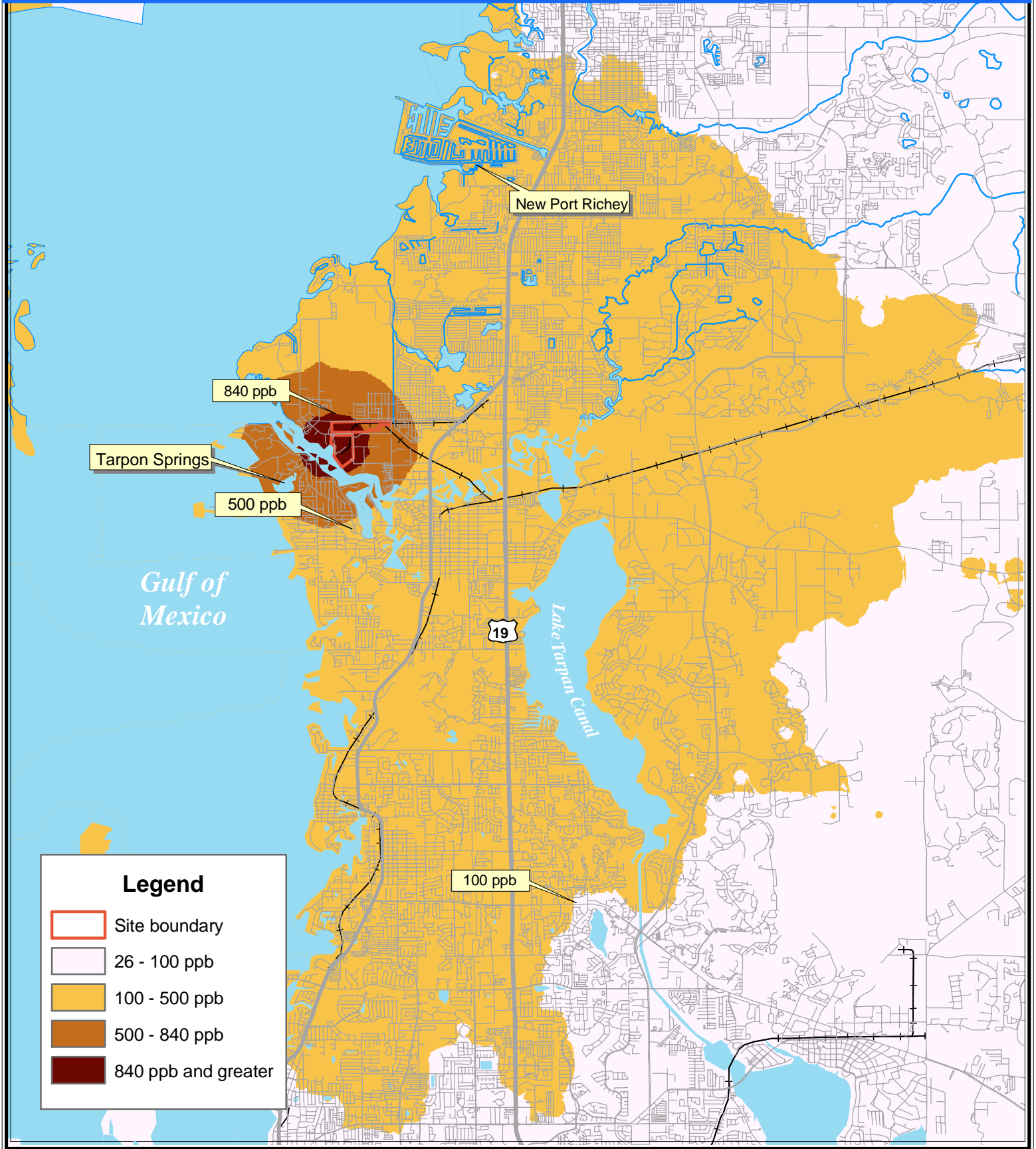
Figure 25. One mile radius 1980 demographic information



Demographics Statistics Source: 1980 US Census Bureau
 *Calculated using an area-proportion spatial analysis technique

Stauffer Chemical Site

Figure 26. Predicted maximum hourly sulfur dioxide levels
1977 to 1981



Stauffer Chemical Site

Figure 27. Predicted average annual sulfur dioxide levels
1977 to 1981

