

Figure 1
CMC Site

Figure 2
Building Layout

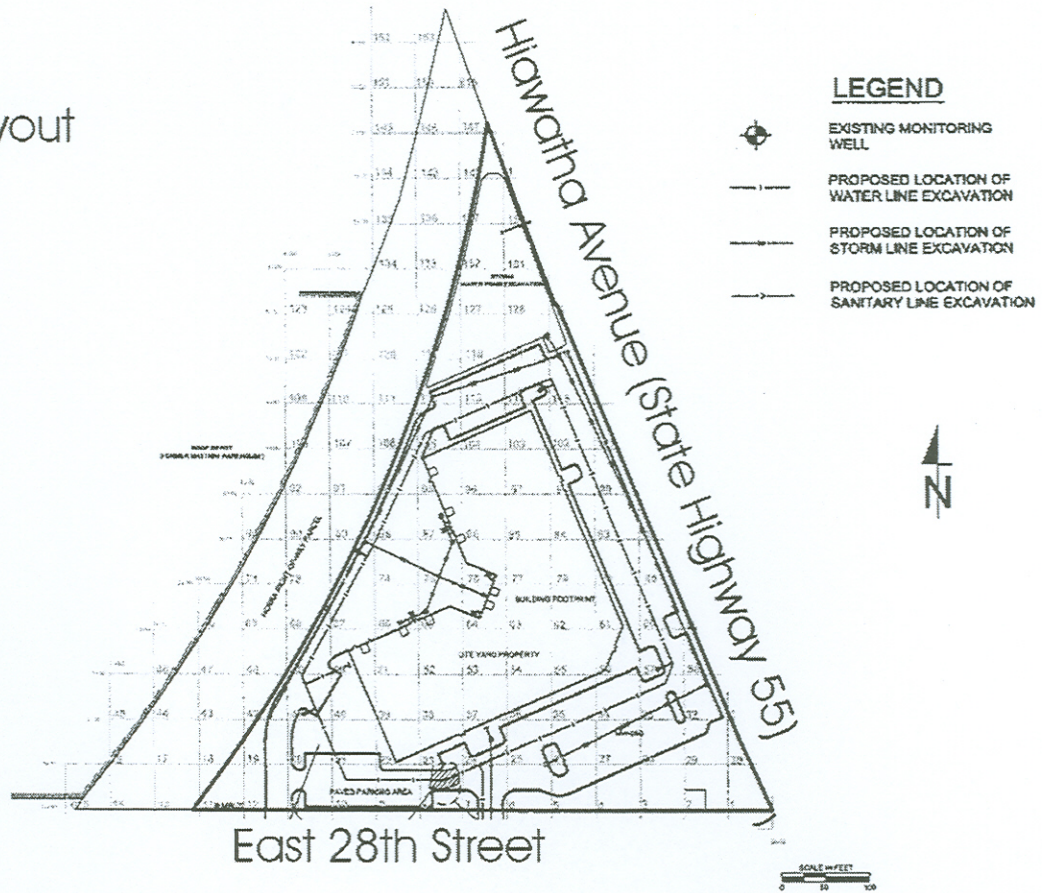
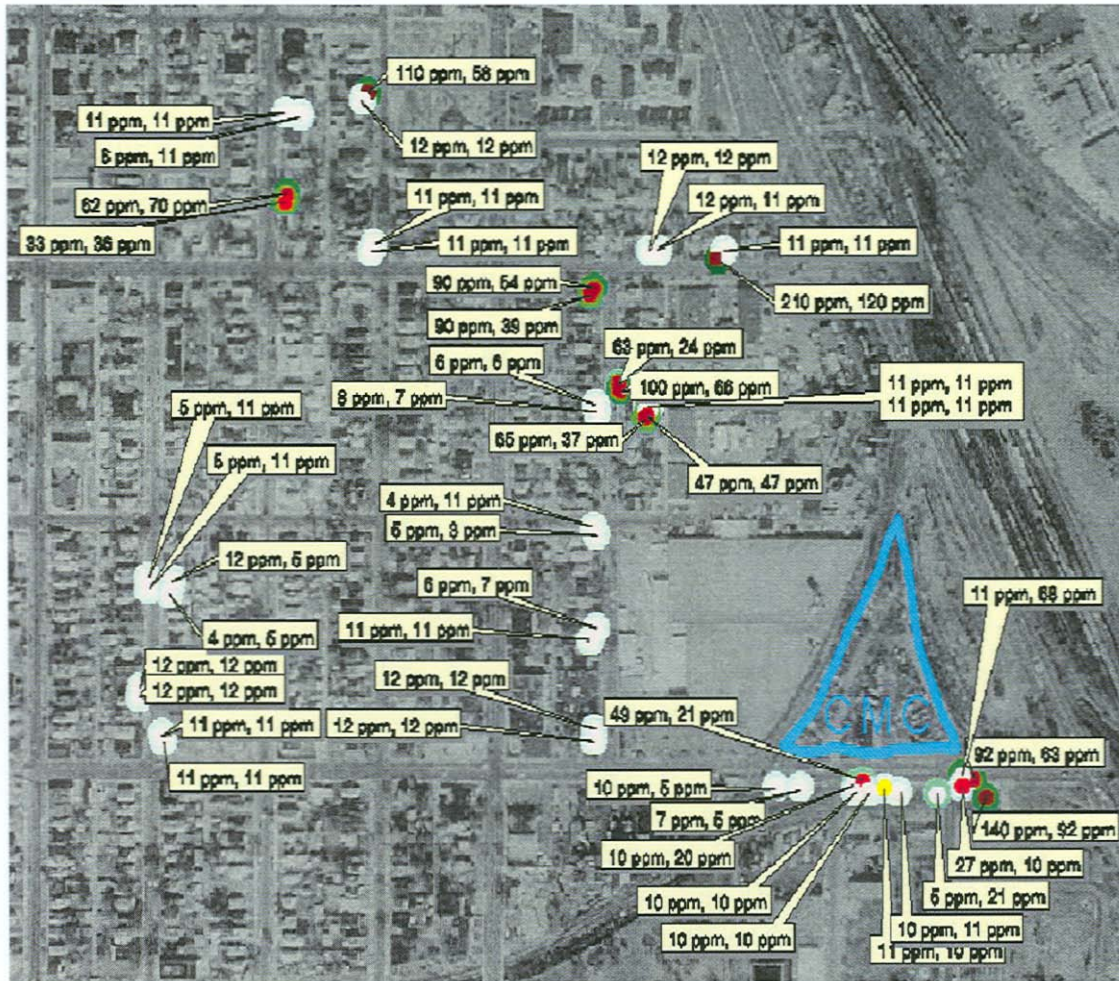




Figure 3
CMC Hot Spot Excavation

Soil Arsenic Concentrations (1-3in, 3-6in)



- Arsenic 1-3 in. (ppm)
- 3 - 12
 - 13-24
 - 25-50
 - 51-100
 - 101-206
- Arsenic 3-6 in. (ppm)
- 3 - 12
 - 13-24
 - 25-50
 - 51-100
 - 101-206



Figure 4

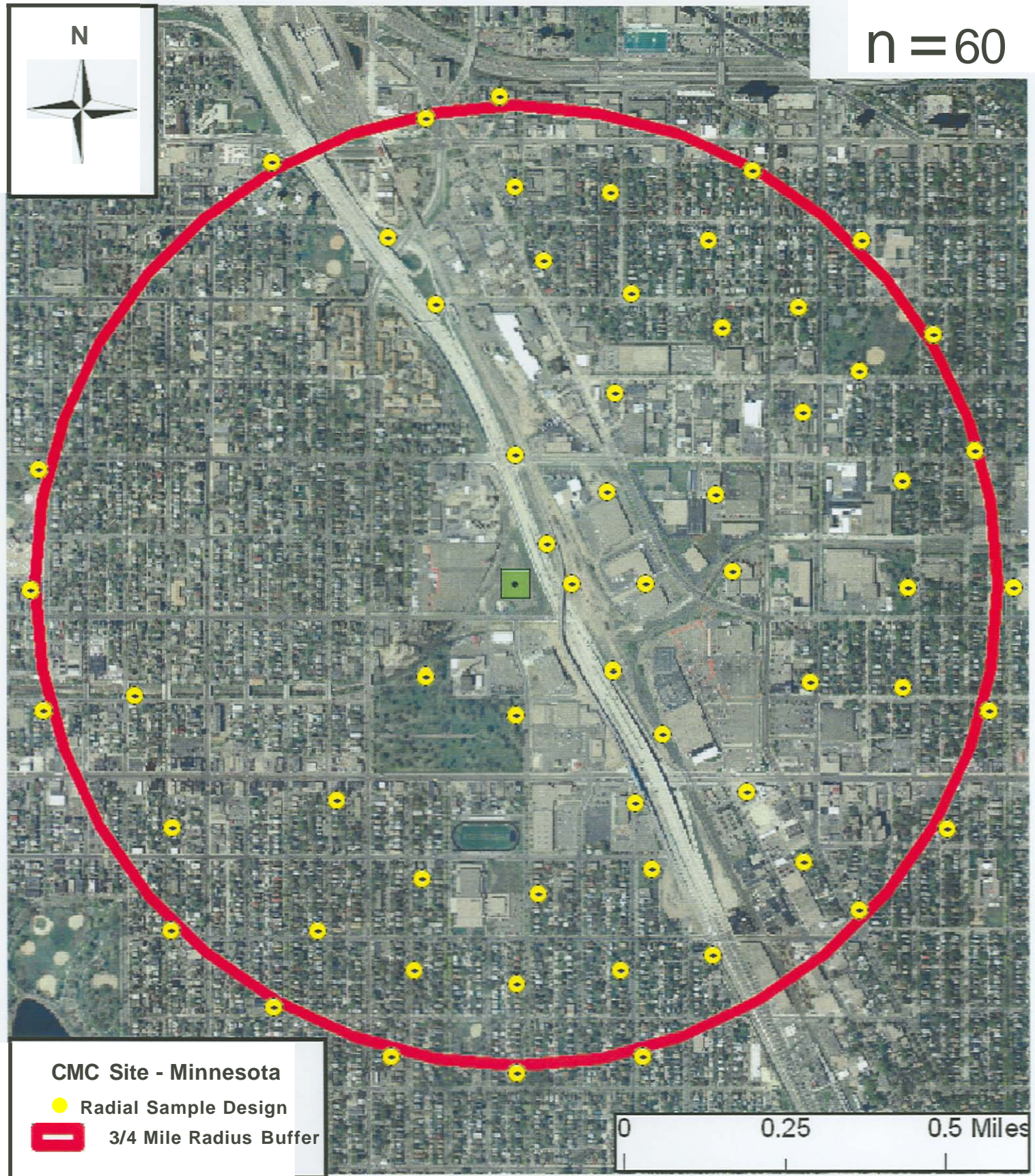
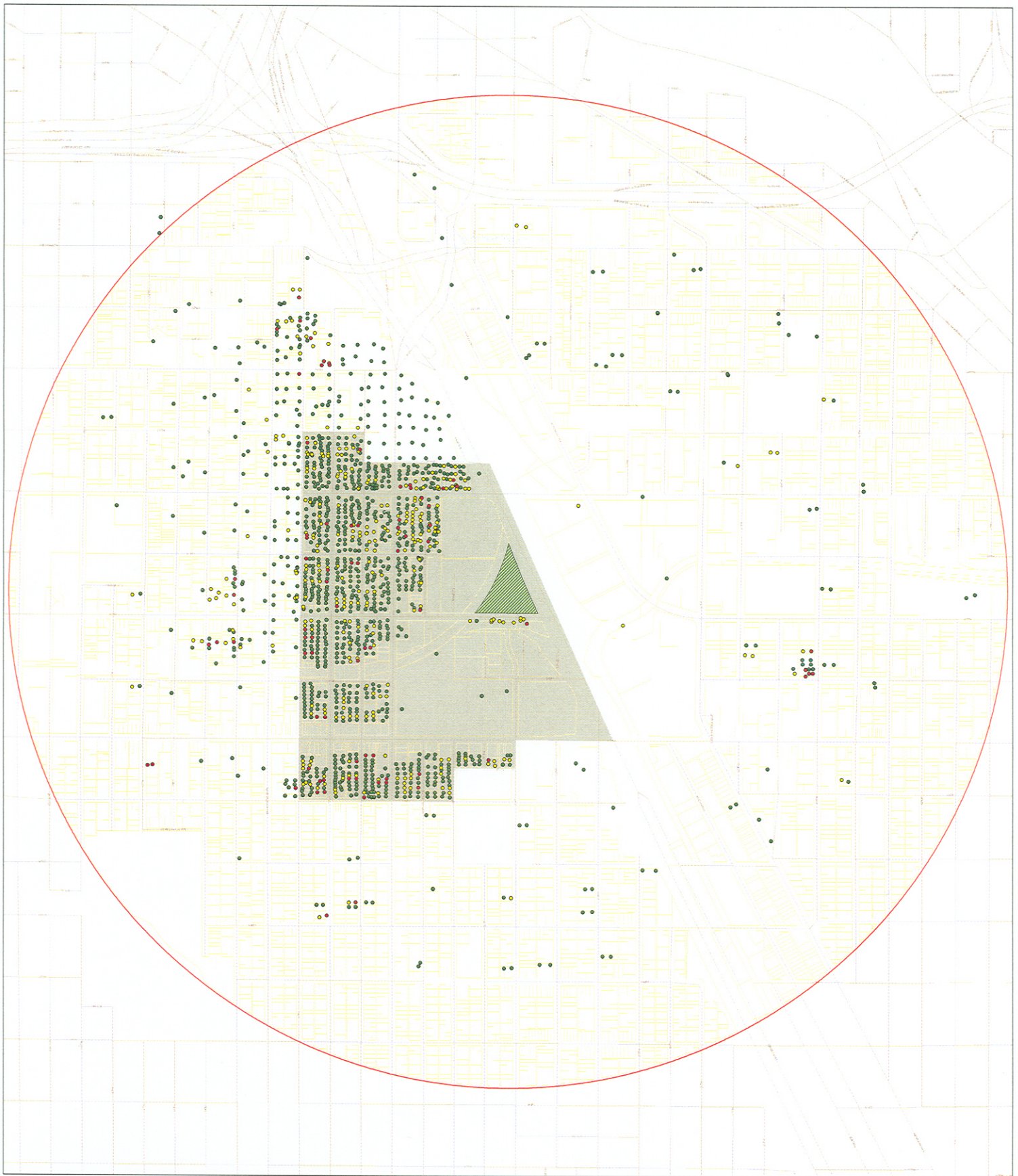


Figure 5, Radial sampling design surrounding the CMC facility, Samples are taken at an initial 328 ft (100 m) distance and 740 ft (225 m) intervals thereafter. A total of 6 radials were included in this design. Samples were determined at 45 degree bearing intervals for the first two radials (100 m , 325 m). Samples were determined at 22 degree bearing intervals for the following two radials (550 m, 775 m). Samples were determined at 15 degree intervals for the last two radials (1000 m, 1225 m). Samples occurring within 250 ft (76 m) of previously collected samples were deleted. Additionally, samples located on industrial developments such as roadways and facilities were removed from this sampling design. In some instances, a sample located on such a development was relocated to a nearby (< 100 ft.) location where a sample maybe easily obtained. Total number of samples equals 60.



Contaminant Distribution for Parcels Sampled Through November 2005
 South Minneapolis Soil Contamination Site
 Minneapolis, Hennepin County, Minnesota

Samples Collected Through 11/15/2005

Arsenic in Soil (mg/kg)

● 0.00 - 9.99 (n=1,198)

● 10.00 - 94.99 (n=331)

● 95.00 - 1200.00 (n=83)

■ August 2005 100% Residential Sampling Area

○ One Mile Buffer of Site

0 500 1,000 1,500
 Feet

Map created from data of varying accuracy and precision.

Figure 6

