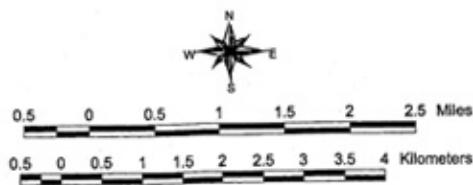


Figure 4: General location of faults in the Jordan Sandstone, southern Washington County, MN  
 Cross-section B-B' located approximately along Hwy. 61



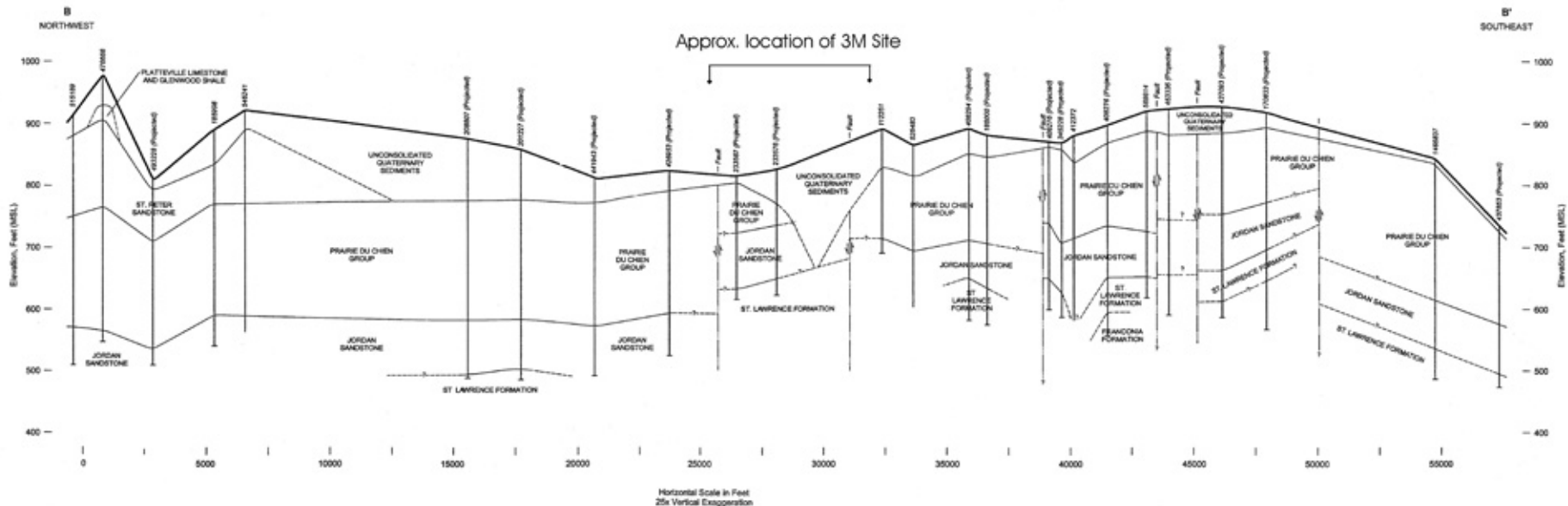


Figure 5: Cross-section showing faults in bedrock  
 Cross-section location shown on Figure 4

11199 Minnesota Unique Well Number  
 (↕) Indicates Relative Movement Along Fault

NOTES: 1. Fault Locations Provided by Minnesota Geological Survey  
 2. Fault Orientations are Assumed to be Vertical or Nearly So  
 3. Well Logs Obtained from Minnesota Geological Survey's County Well Index