



## WHAT FORMS ARE REQUIRED FOR QUALIFIED RECIPIENTS?

Reclamation Reform Act of 1982 (RRA)

The RRA and the Acreage Limitation Rules and Regulations (43 CFR part 426) require landholders (direct or indirect landowners or lessees) to complete Bureau of Reclamation (Reclamation) forms for each water year the landholder receives irrigation water from a Reclamation project. Such forms **must** be filed with the district **before** deliveries commence in any given year.

☞ There are two RRA forms submittal thresholds for qualified recipients; specifically, 80 acres and 240 acres held **westwide**. The threshold that applies to you or your entity as a qualified recipient depends on the RRA forms submittal category of **each district** in which you or your entity holds land. Please contact each district where you or your entity holds land to determine the applicable RRA forms submittal threshold for you or your entity **in that district**. For more information on RRA forms submittal thresholds for qualified recipients and the RRA forms submittal threshold for limited and prior law recipients, see **Fact Sheet 1**.

If you represent a religious or charitable organization, trust, estate, or public entity, special RRA forms are required to be submitted. You should contact your district or local Reclamation office to obtain the proper RRA forms.

### WHAT RRA FORMS ARE REQUIRED ANNUALLY FOR QUALIFIED RECIPIENTS?

1. For individuals, Form **7-2180EZ**, "EZ Certification of Individual's Landholdings," may be used if you meet all of the following criteria: (a) **all** of your landholdings subject to the acreage limitation provisions are located in only **one** district; (b) your landholdings subject to the acreage limitation provisions total **less than** 960 acres; (c) **all** of your landholdings are held **directly** (that is, the land is not owned or leased through any type of legal entity, such as a corporation, partnership, etc.; through a trust or estate; or in the names of your children or other dependents); (d) you are not claimed as a dependent within the meaning of the Internal Revenue Code; **AND** (e) you are subject to the discretionary provisions of the RRA.

2. If you are an individual and you do not meet any one of the criteria (a) through (c) listed in number 1, you must initially submit a **Form 7-2180**, "Certification of Individual's Landholdings." If you do not meet criterion (d), your landholdings must be included on the RRA form submitted by your parent(s) or legal guardian. If you do not meet criterion (e), you are not a qualified recipient and should contact your district for the proper RRA form(s) to complete.


3. If you filed the proper RRA forms in a previous year and have had **no changes** to your landholding since that time, you only need to complete a **Form 7-21VERIFY**, "Verification of Landholdings," as your annual submittal. Please note that if you need to submit a new Form 7-21XS, "Designation of Excess Land," you **may not** use a Form 7-21VERIFY to verify any RRA forms.

4. Landholders that hold land **ONLY INDIRECTLY** through legal entities must complete an initial standard RRA form as determined in the following flowcharts. After this initial submittal, such indirect landholders are not required to file any RRA form for those years that the entities have no change to their landholdings and **all** the information included on the standard RRA form remains correct.

5. If you or your entity is not eligible to complete a Form 7-21VERIFY, the two flowcharts found later in this Fact Sheet will help you determine whether Form 7-2180 or Form 7-2181, "Certification of Entity's Landholdings," should be completed and if other RRA forms are required.

## LANDHOLDING CHANGES

If you have filed the proper RRA forms and your landholding then changes **during the current irrigation season**, you will need to notify all districts in which you hold land within **30 calendar days** and complete a new standard RRA form within **60 calendar days** of the change. For example, if RRA Form 7-2181 was previously submitted for your entity and there are any changes, whether in acreage owned or leased, in attribution to part owners, etc., a new Form 7-2181 must be submitted for your entity. All part owners identified on the previously submitted Form 7-2181 who, as a result, have a change to the information provided previously on their standard RRA forms must also submit new standard RRA forms within **60 calendar days** of the change(s).

 **These 30-calendar-day and 60-calendar-day grace periods do not apply to a new landholder. A new landholder must submit appropriate RRA forms prior to receiving Reclamation irrigation water.**

If you have filed the proper RRA forms and your landholding then changes **outside the irrigation season**, you and any applicable part owners will each need to complete a new standard RRA form **prior to receiving** any Reclamation irrigation water deliveries following such changes.

## FLOWCHARTS

Refer to Flowchart A if you are certifying as an individual or single family (husband, wife, and dependents) and Flowchart B if you are certifying as an entity owned by more than one individual or family. Legal entities wholly owned by one individual or one single family are certified as part of the RRA forms completed under Flowchart A.


The titles for the RRA forms shown in the flowcharts follow. To obtain copies of any of the RRA forms listed on this Fact Sheet, contact your district.

Form 7-2180 -- CERTIFICATION OF INDIVIDUAL'S LANDHOLDINGS

Form 7-2181 -- CERTIFICATION OF ENTITY'S LANDHOLDINGS

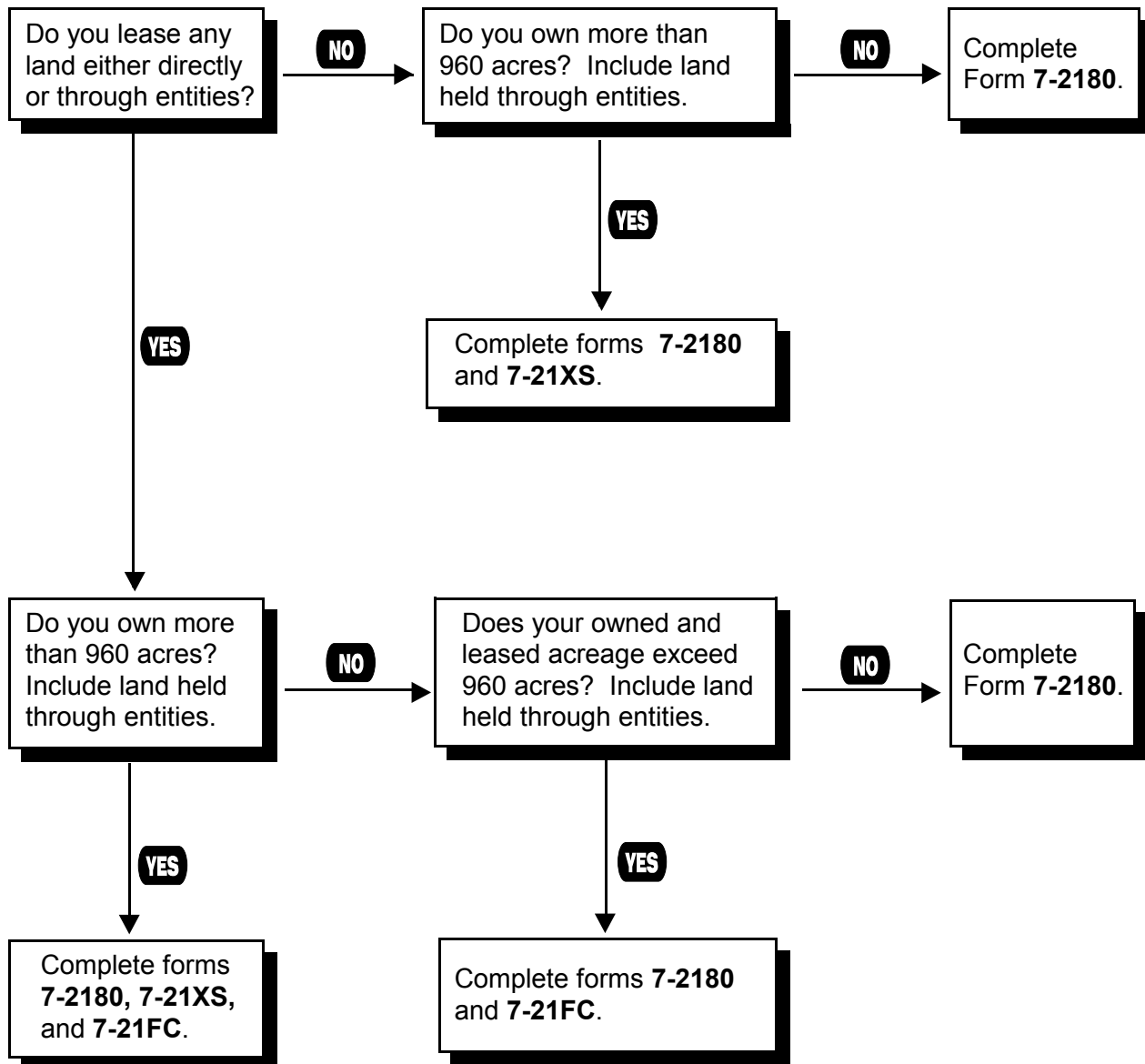
Form 7-21XS -- DESIGNATION OF EXCESS LAND

Form 7-21FC -- SELECTION OF FULL-COST LAND

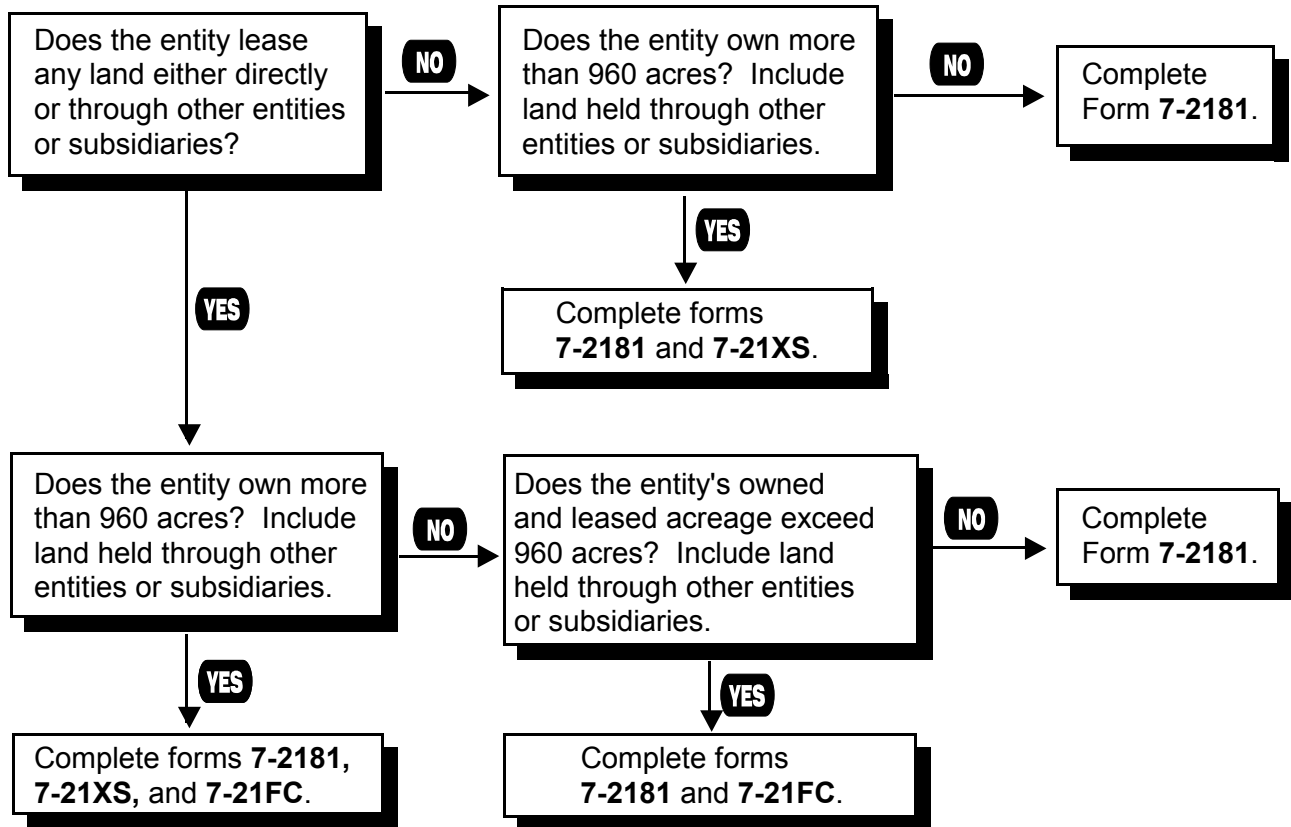
 In working with the following flowcharts, please remember that **ALL land leased from public entities is treated as land owned by the landholder.**

**FLOWCHART A**

INDIVIDUALS, INCLUDING SINGLE FAMILIES (husband, wife, and dependents)



**FLOWCHART B**  
FOR ENTITIES OWNED BY MORE THAN ONE INDIVIDUAL OR FAMILY



**NEED MORE INFORMATION?**

For questions about:	See Fact Sheet:
Entitlements for qualified recipients	4
When and where RRA forms must be filed	1
A complete list of RRA forms	1
Signature requirements for RRA forms	10
Landholding changes	11
Trusts and estates	12

If you have any other questions, contact your district or local Reclamation office.

Mission of the Bureau of Reclamation: To manage, develop, and protect water and related resources in an environmentally and economically sound manner in the interest of the American public.

The Department of the Interior has established a 24-hour toll-free telephone number (1-800-424-5081) for anyone wishing to report suspected violations of the Reclamation Reform Act of 1982 (RRA). Anyone reporting suspected violations will be protected under Federal privacy laws.

Distributed by the Bureau of Reclamation, United States Department of the Interior.