



# Conservation CONNECTION



Publication of the Bureau of Reclamation, Mid-Pacific Region  
January 2003 • Volume 9, Issue 5

## KLAMATH IRRIGATORS MAKE EFFORTS TO IMPROVE WATER CONSERVATION

### What's Inside...

**Page 2**

Spotlight: Jon Hicks of the Klamath Area Office  
Hot Tip

**Page 3**

Agricultural Pumping  
Efficiency Program

**Page 4**

Conservation Talk  
36<sup>th</sup> Water Users Conf.

**Page 5**

CVPIA Corner  
Low Interest Loans

**Page 6**

Goodbye Tracy  
Contact Us

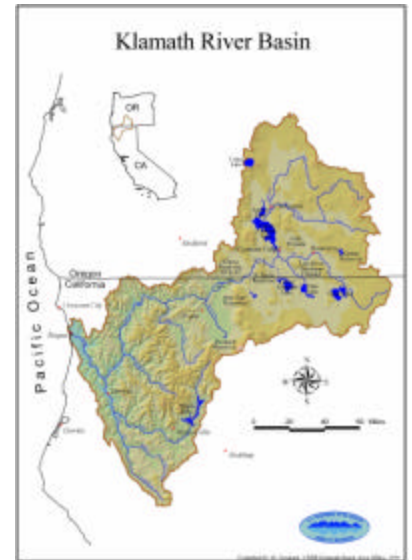
**Page 7**

Hot Tip

**Page 8**

Calendar Of Events

Until last year, many people in Oregon and California had probably never heard of the Klamath Project (Project). The Project provides water to over 240,000 acres of farmland, which produces oats, barley, wheat, potatoes, sugar beets, and fueling a \$300 million ag-dependent economy throughout the Klamath Basin. In addition, it provided for two national wildlife refuges, endangered species, and fulfills obligations for the Native American Trust Assets in Oregon and California.



In 2001, the agricultural community that depends on the Project for irrigation water had been quietly doing what they'd always done: farming. During 2001, the water issues in the Klamath Basin were traumatic to all involved parties. A shut off of Project irrigation water occurred that summer and the Klamath Water Users Association has now taken a look back over the past 15 years. They are focusing on past accomplishments that improved water conservation and contributed to the sustainability of the environment including fish and wildlife. Their conservation accomplishments will be published in a booklet, which may be released as soon as January 2003.

Despite the controversial 2001 Project water cutoff that left farmers dry, the Tulelake Irrigation District (TID) and Tulelake farmers have worked hard to provide any available water they can to the National Wildlife Refuges (NWR). Through these efforts water began to replenish the wetlands and marshes vital to waterfowl, shorebirds, and bald eagles, which rely upon these areas for resting and feeding opportunities.

The Project water was made available to irrigators for the 2002 irrigation season even though it was another dry year. The response from the agricultural community was very positive as irrigators moved forward with actions intended to save water and reinitiate deliveries to the NWR. The Bureau of Reclamation (Reclamation) and irrigation districts urged all water users to further reduce their withdrawals by

**2800 Cottage Way  
MP-410  
Sacramento, CA  
95825-1898  
916-978-5212  
Fax 916-978-5290**

Articles, ideas, and suggestions are welcome, as are notices of upcoming events, meetings or activities. We reserve the right to edit material and publication is not guaranteed. Please send all material to Shani Lee at [Vlee@mp.usbr.gov](mailto:Vlee@mp.usbr.gov).

*Continued on page 7*



# The Spotlight is on...



*Jon Hicks*

**Jon Hicks** is the new Water Conservation Specialist at the Klamath Basin Area Office. Born in Riverside and raised in Sacramento, Jon moved to Oregon in 1978. Although Jon has only been with the Bureau of Reclamation (Reclamation) for the past 3 months, he is no stranger to Resource Management.

Prior to joining Reclamation, Jon spent several years in the private industry working for Adkins Consulting Engineers, various construction companies, and other entrepreneurial ventures. At one point in his career when he was looking for new challenges, Jon simultaneously held licenses in real estate, insurance, and securities. Jon moved from Salem Oregon to Klamath Falls in 1992 when he accepted a promotion as District Manager with the Oregon Department of Transportation (ODOT). While employed with ODOT, Jon was responsible for the operation and maintenance of several hundred miles of highways and bridges. This experience, along with his past experience with construction and engineering, allowed Jon to gain extensive experience with drainage, earthen structures, storm water systems, on-site septic systems, and construction excavation.

Jon says that his most fulfilling position to date was during his days with ODOT, because he “truly got to influence positive changes in the community.” Jon hopes to experience the same sense of accomplishment with Reclamation as he begins working with the local irrigation districts and tries to coordinate water conservation projects with local staff from the National Resources Conservation Service and the Resource Conservation Districts. One of Jon’s main reasons for accepting the position in Klamath Falls is that he enjoys challenges and thrives on solving problems. Jon was very interested in the issues the Klamath Project faced and wanted to assist with keeping the Klamath Project viable for many years to come.

In Jon’s private time, he enjoys spending time with his family, snow skiing, and sailing on the Klamath Lake.

*You can reach Jon Hicks at 541-883-6935 or at [jhicks@mp.usbr.gov](mailto:jhicks@mp.usbr.gov)*



Do not use running water to thaw meat or other frozen foods. Defrost food overnight in the refrigerator or use the defrost setting on your microwave.

# Agricultural Pumping Efficiency Program

The Agricultural Pumping Efficiency Program is presented by the Center for Irrigation Technology (CIT) at California State University, Fresno. The following information has been provided by CIT and may be helpful to Water Districts in assisting their Water Users.



## What is it?

The Agricultural Pumping Efficiency Program (Program) is an educational and incentive rebate program intended to improve overall pumping plant efficiency and encourage energy conservation.

## Who is eligible?

All owners or users of an agricultural electric or natural gas utility account that are paying the Public Goods Charge (normally customers of Pacific Gas & Electric, Southern California Edison, Southern California Gas, and San Diego Gas & Electric) are eligible. Log on to the Program website for eligibility information.

## What is available?

The Program has four parts:

1. Education – Educational seminars concerning pumping plant specification and maintenance, crop water requirements, and water measurement will be given throughout the State. Learn how to:
  - Purchase and maintain an efficient pumping plant.
  - Know how much water needs to be pumped and how much water has been pumped.
2. Technical Assistance – The Program personnel are available to help in locating pump efficiency testers, completing a pump retrofit/repair incentive rebate application form, or answer general questions as to pumping plant design and use. Note that site-specific engineering services are not available.
3. Pump Efficiency Tests – Rebates are paid directly to participating pump test companies for efficiency tests. Tests are available for working, electric, or natural gas-powered agricultural water pumps.
4. Incentive Rebates for Pump Repairs – incentive rebates are available to individuals for retrofit/repair of working, electric, or natural gas-powered, agricultural water pumps.

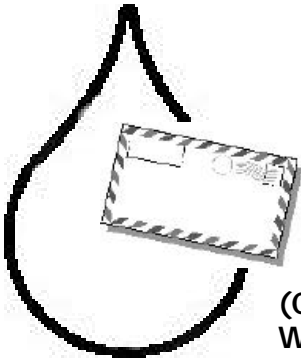
## How Do I Contact the Program and Learn More?

The Program maintains regional offices in Northern California, Southern California, the San Joaquin Valley, and the Central Coast. Log on to the web site at [www.pumpefficiency.org](http://www.pumpefficiency.org). Here you will find summaries of all the Program components, a calendar of upcoming events, application forms, phone numbers and e-mail addresses of the regional offices, and information to help you conserve energy and water. Or, call one of the Regional offices for an informational packet:

- Northern California (toll-free): 866-333-8938
- San Joaquin Valley (main office): 800-845-6038
- Southern California (toll-free): 866.333.8939
- Central Coast (Santa Clara County to Ventura County): 800-845-6038

The Program has a limited budget may be terminated or modified without notice. Applications for retrofit/repair rebates or pump tests are accepted on a first-come, first-serve basis until funds are allocated or December 31, 2003, whichever comes first.

California consumers are not obligated to purchase any full -fee service or other service not funded by this program. This program is funded by California utility ratepayers under the auspices of the California Public Utilities Commission.



---

# Conservation Talk

---

**Q: What is the status of the revision of the Standard Criteria (Criteria) for Evaluating Water Management Plans?**

In response to comments received, the period to make suggestions for the Criteria was advertised and closed on February 28, 2002. Reclamation developed a draft revision and offered it for public review and comment in August 2002. The draft Criteria was advertised in the Federal Register, posted on the internet, and offered in three workshops, which were attended by approximately 40 people. The comment period for the revised draft Criteria closed November 15, 2002, and approximately 15 comments were received. Many of these comments will be incorporated into the final Criteria, which should be completed by December 31, 2002.

A new version of the Water Management Planner (Planner), which includes the latest revision of the Criteria, is expected to be available by late January 2003. The Water Management Plans submitted after this date will be evaluated using the latest revised draft Criteria.

**Q: What is Evapotranspiration (ET)?**

Per the University of California, evapotranspiration (ET) is the amount of water used by a particular type of crop, comprised of water evaporating from the soil and water transpiring from the plants. Crop evapotranspiration estimates are available as either historical averages or real-time estimates from the California Department of Water Resources CIMIS program at [www.cimis.water.ca.gov](http://www.cimis.water.ca.gov) and University of California Cooperative Extension Offices. Also, crop ET information is available from the US Bureau of Reclamation's AgriMet program at [www.pn.usbr.gov/agrimet](http://www.pn.usbr.gov/agrimet).

*This section was created for those that have questions pertaining to water conservation practices or water use efficiency matters. If there is anything that you would like to ask our water conservation specialists, please send an e-mail to [svlee@mp.usbr.gov](mailto:svlee@mp.usbr.gov) or send your questions in writing to the address on the front cover.*

---

## 36<sup>th</sup> Mid-Pacific Region Water Users Conference

Don't forget to mark your calendars for the 36<sup>th</sup> Annual Mid-Pacific Region Water Users Conference. The conference begins on Wednesday, January 22, 2003 and will be held at the Radisson Hotel in Fresno, California. This annual conference is attended by managers, directors, operation and maintenance personnel, consultants, and government agency representatives from districts served by the Bureau of Reclamation (Reclamation) facilities in California, Nevada, and Oregon.

In addition to the various topics that will be covered at the conference, there will also be field trip opportunities and technical assistance. Reclamation's Mid-Pacific Regional Water Conservation staff will be available to provide Annual update assistance to water users and information about the Water Conservation Field Services Program. If you wish to take advantage of this assistance, please bring the appropriate materials to the Water Conservation booth. For more information about the Annual Update Process please contact Jerry Townsend at 916-978-5223.

*For more information about the 36<sup>th</sup> Annual Mid-Pacific Region Water Users Conference, please call 916-448-1638.*



---

# CVPIA Corner

---

As we close out another year, it provides us with the opportunity to reflect on accomplishments made throughout 2002. For example, many Districts were able to complete their Water Management Plans (Plan). To those Districts, the Water Conservation staff extends its appreciation. However, there are still some Districts who have yet to submit a Plan. For those Districts, we would like you to add this one item to your New Year's Resolution. For assistance in completing your Plan, please contact your Area Office Conservation Specialist, or Lucille Billingsley in the

Regional Office, at 916- 978-5215.

Not to be forgotten, there is still the requirement for the Annual Updates. This year, for the first time, both Agricultural and Urban Contractors can now report via the Internet. For Agricultural Contractors this can be accessed through our site at: [www.watershare.mp.usbr.gov](http://www.watershare.mp.usbr.gov). For Urban Contractors, please report via the California Urban Water Conservation Council's (Urban Council) site at: [www.ccwcc.org](http://www.ccwcc.org). The Bureau of Reclamation's Contractors who are not signatories to the Urban Council have been provided with "guest accounts" for access.

If you have any questions regarding the Annual Update process, please contact either your Area Office Conservation Specialist or the following individuals:

**Agriculture:** Bryce White, Regional Office, 916-978-5203

**Urban:** Beth Ernsberger, Urban Council, 916-552-5885

---

## Low Interest Loans & Other Funding Sources

The following governmental agencies and private businesses have programs that provide low interest loans for on-farm irrigation improvements, and other agricultural related programs. This information should be of assistance with Best Management Practice B6, "Facilitate and/or Provide Financial Incentives and Assistance for On-Farm Water Management Improvements." Please contact them directly if you are interested in their programs.

### California Energy Commission

Peak Load Reduction Program 866-297-3029

Agricultural Energy Grant Program: Offering \$250 per kw for agricultural electricity users who can reduce electricity during the peak period of June through September during the hours of 12pm and 6pm. Funds are available while they last.

### California State Water Resources Control Board, Division of Water Quality

Paul Marshall, 916-323-4201

Funds projects that improve water quality by reducing salinity, such as gated pipes, drip irrigation, etc.

### Pacific Gas & Electric

800-468-4743

### Sacramento Valley Farm Credit

530-666-3333

A lending cooperative with flexible loan programs for ranchers and farmers.

## Water Conservation Says Goodbye to Tracy Slavin



*Tracy Slavin*

Tracy Slavin has accepted the position of Branch Chief of the Program Management Branch. Tracy originally came to the Bureau of Reclamation (Reclamation) on an Interagency Personnel Agreement in 1996 and was hired as a permanent Water Conservation Specialist in 1998. One year later Tracy became the Water Conservation Team Leader. Prior to coming to Reclamation, Tracy worked at the Westlands Water District, where he was also a Water Conservation Specialist for 15 years.

Tracy has extensive experience in water use efficiency and has been extremely dedicated to Reclamation's Water Conservation Program. While on the Water Conservation Team, Tracy was extremely instrumental in preparing water conservation plans and providing technical assistance on water management to farmers. In addition to fulfilling his water conservation duties, Tracy has been a Board Member of the California Irrigation Institute for the past 9 years and has traveled out of the country to share his Central Valley experiences with foreign water conservation specialists.

It is not just Tracy's expertise and advisement that will be missed by Water Conservation, but also his kind and patient nature that has graced many in the water use efficiency field. The Water Conservation Team thanks Tracy for all of his years of hard work and dedication and although he is only a few cubicles away, he will always be an honorary Water Conservation Team member.

*Congratulations Tracy!*

---

## Contact Us...

### USBR WATER CONSERVATION STAFF 2002



*Continued from Front Page*

10 percent. Whenever possible, Project irrigators decided against new plantings, cut back

#### **Northern California Area Office**

Dennis Perkins  
530-934-1327; Fax 530-934-1302  
E-mail: [dperkins@mp.usbr.gov](mailto:dperkins@mp.usbr.gov)

#### **Lahontan Basin Area Office**

Jim Lively  
775-423-7802; Fax 775-423-1056  
E-mail: [jlively@mp.usbr.gov](mailto:jlively@mp.usbr.gov)

#### **Klamath Basin Area Office**

John Hicks  
541-883-6935; Fax 541-884-9053  
E-mail: [jhicks@mp.usbr.gov](mailto:jhicks@mp.usbr.gov)

#### **Central California Area Office**

Pete Vonich  
916-989-7265; Fax 916-989-7208  
E-mail: [pvonich@mp.usbr.gov](mailto:pvonich@mp.usbr.gov)

#### **South-Central California Area Office**

Dave Woolley  
559-487-5049; Fax 559-487-5397  
E-mail: [dwoolley@mp.usbr.gov](mailto:dwoolley@mp.usbr.gov)

#### **Mid-Pacific Regional Office**

Lucille Billingsley, Acting Team Leader  
916-978-5215; Fax 916-978-5290  
E-mail: [lbillingsley@mp.usbr.gov](mailto:lbillingsley@mp.usbr.gov)  
<http://www.watershare.usbr.gov>

on pasture irrigation, and conserved Project water by using ground water in place of surface water. Despite the dry conditions, water users in the last 6 weeks of the season were able to reduce irrigation water sufficiently.

On July 17, 2002, the TID entered into an agreement with Reclamation for the sale of 20,000 acre-feet of water from wells in Tulelake. This was in response to a request from Reclamation to help meet all the Project, endangered species, and Tribal Trust objectives. Additional water was needed because of the lower than predicted inflow to Upper Klamath Lake. With support and assistance provided by TID and the Project water user community, Reclamation met in-stream flow objectives in a dry water year in the Klamath basin.

Klamath Basin landowners are aggressively pursuing projects by utilizing cost share funds earmarked by the 2002 Federal Farm Bill for basin water conservation efforts. Funds will be made available through the Environmental Quality Incentives Program (EQIP), which is the central conservation program of the new Farm Bill. In the Klamath Basin, special funding is available for such water-conserving purposes as improving irrigation systems, increasing water storage, groundwater recharge, and conversion to less water-intensive agricultural activities.

KDD currently has a 120-horsepower tail water recovery pumping plant on the Ady Canal that was installed using their own funds. This recovery system has reduced Klamath River water diversions, provided drought mitigation benefits, and improved canal delivery efficiency. In addition, the Klamath Drainage District (KDD) is proposing to construct a pumping plant to capture tail water from upstream areas and re-circulate it for additional uses. KDD has proposed to install a similar system using a 60-horsepower pump on the North Canal and is seeking financial assistance for this purpose.

The Shasta View and Malin Irrigation Districts have converted a large part of their open-channel conveyance system to a subsurface piping system, making their irrigation delivery system one of the most efficient in the state of Oregon. Irrigation district managers are currently assessing opportunities to replace more open ditches to piped distribution.

TID has been addressing opportunities to further develop new projects that will reduce conveyance losses to its customers. Last year, in partnership with the Reclamation, TID completed a large canal lining project using a state-of-the-art canal lining material called Ethylene Propylene Diene Monomer. Over 400,000 square feet of this material was used to line nearly 2 ½ miles of open canal. Prior to the lining project, the yearly seepage loss in the canal was estimated at 1,000 acre-feet. TID officials are pleased with the water savings generated by this project and with the ease of construction and maintenance. The project was completed under a program initiated by Reclamation that promotes low-cost, low-tech lining systems which can be installed and maintained by irrigation district personnel without the need for specialized contractors.

The Project irrigators are much more comfortable implementing on the ground improvements than they are with recounting all they have accomplished over the years to conserve water and improve the environment. However, being the focus of intense attacks over the past few years has created the need to show just what they have done to preserve farming in the Klamath Basin while improving the environment for fish and wildlife.



If you have a well at home, check your pump periodically. Listen to hear if the pump kicks on and off while water is not being used. If it does, you have a leak.



# Calendar Of Events

<p><b>FLOW MEASUREMENT &amp; CANAL OPERATION / MODERNIZATION CLASSES</b> January 14 – January 16 &amp; January 27 – January 31, 2003 Irrigation Training &amp; Research Center San Luis Obispo, California For more info, call <a href="tel:805-756-2434">805-756-2434</a> Or log onto: <a href="http://www.itrc.org">www.itrc.org</a></p>	<p><b>SUPERVISORY CONTROL &amp; DATA ACQUISITION (SCADA) CLASSES</b> February 3 - 7, 2003 Irrigation Training &amp; Research Center San Luis Obispo, California For more info, call <a href="tel:805-756-2434">805-756-2434</a> Or log onto: <a href="http://www.itrc.org">www.itrc.org</a></p>
<p><b>36<sup>TH</sup> MID-PACIFIC REGION WATER USERS CONFERENCE</b> January 22 – January 24, 2003 Fresno, California For more info, call <a href="tel:916-448-1638">916-448-1638</a> Pre-Registration is suggested</p>	<p><b>CALIFORNIA URBAN WATER CONSERVATION COUNCIL PLENARY SESSION</b> March 12, 2003 Preservation Park Oakland, California For more info, call <a href="tel:916-552-5885">916-552-5885</a> Or log onto: <a href="http://www.cuwcc.org">www.cuwcc.org</a></p>
<p><b>41ST ANNUAL CALIFORNIA IRRIGATION INSTITUTE MEETING &amp; AWMC MEETING</b> January 29-30, 2003 Radisson Hotel Fresno, California For more info, log onto: <a href="http://caii.org/flyer.html">http://caii.org/flyer.html</a></p>	<p><b>WATER EDUCATION FOUNDATION LOWER COLORADO RIVER TOUR</b> March 26 – March 28, 2003 For more info, call <a href="tel:916-444-6240">916-444-6240</a> Or log onto: <a href="http://www.watereducation.org">www.watereducation.org</a></p>



## Conservation CONNECTION

Water Conservation Center  
Bureau of Reclamation, MP-410  
2800 Cottage Way  
Sacramento, CA 95825-1898

*Address Correction Requested*



Printed on  
Recycled Paper

*After Reading This Newsletter, Please Don't Trash It! Pass It To A Colleague Or Recycle It.*