

RECLAMATION

Managing Water in the West

July 2008
Dakotas Area Office

Angostura Resource Management Plan

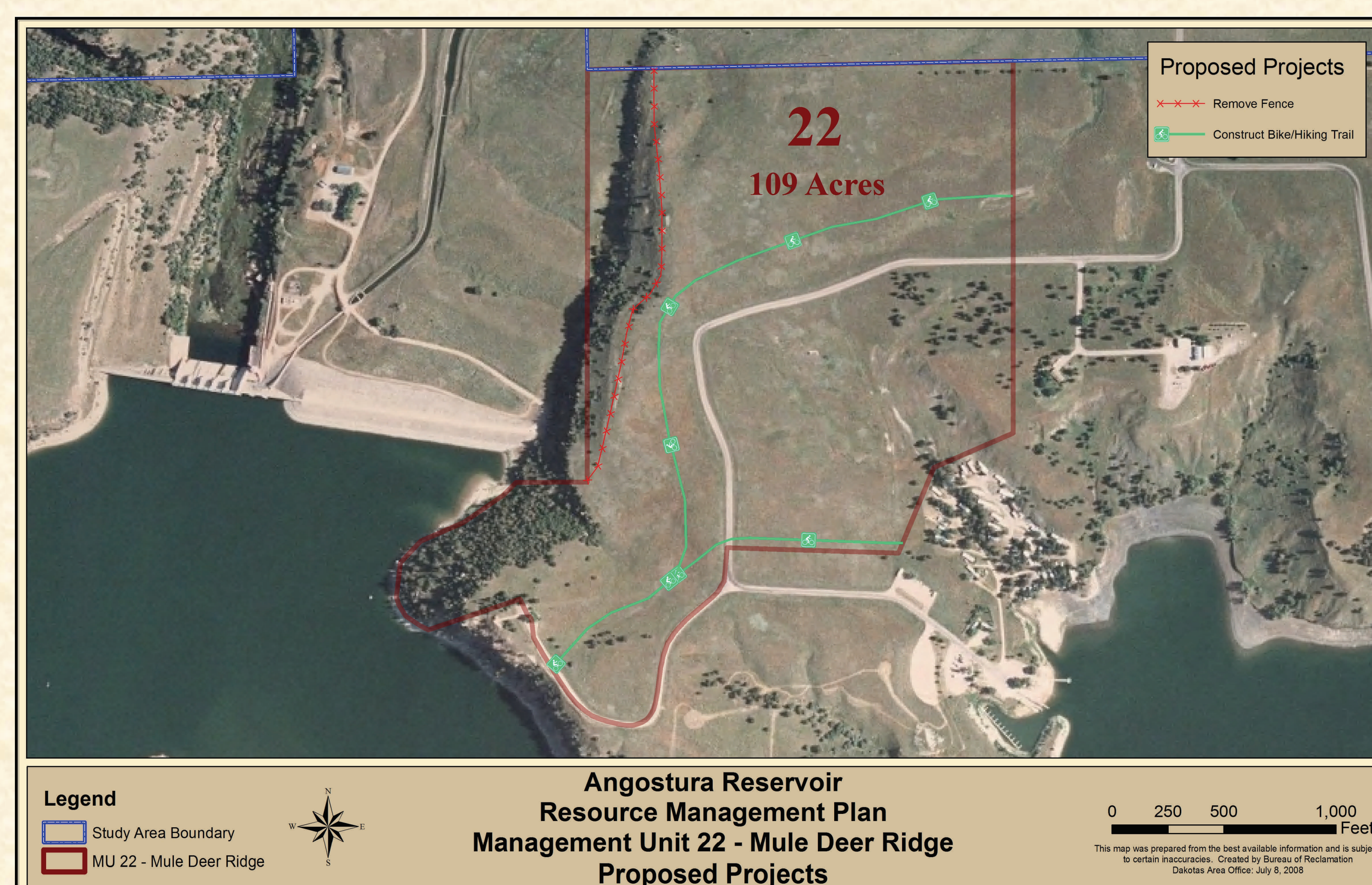
East Side Multiple Use Areas



MU Number	MU Description	Existing MU Type	MU Goal(s) and Objectives	Alternative A No Action	Alternative B Developed Recreation	Alternative C Enhanced Recreation
3	Turkey Draw	Multiple Use	Provide minimum recreation opportunities while protecting, conserving, restoring and enhancing wildlife habitat as well as the following objectives; LUM 1.2, LUM 1.3, LUM 1.4, LUM 1.5 NAT 1.1, NAT 1.2, NAT 1.8, NAT 1.9, NAT 1.10, NAT 1.11, NAT 1.12, NAT 1.13 REC 1.2, REC 1.5, REC 1.6, REC 1.7, REC 1.8, REC 1.9, REC 1.11, REC 1.12 CR 1.1, CR 1.2, CR 1.3, CR 1.4	- Vegetation/Wildlife Habitat Management	- Archery trail	- Same as Alternative B



MU Number	MU Description	Existing MU Type	MU Goal(s) and Objectives	Alternative A No Action	Alternative B Developed Recreation	Alternative C Enhanced Recreation
8	Angostura Breaks	Multiple Use	Provide minimum recreation opportunities while protecting, conserving, restoring and enhancing wildlife habitat consistent with the following objectives; LUM 1.1, LUM 1.2, LUM 1.3, LUM 1.4, LUM 1.5 NAT 1.2, NAT 1.8, NAT 1.9, NAT 1.10, NAT 1.11, NAT 1.12, NAT 1.13 REC 1.1, REC 1.5, REC 1.6, REC 1.7, REC 1.8, REC 1.9, REC 1.11, REC 1.12 CR 1.1, CR 1.2, CR 1.3, CR 1.4	- Bike/Hiking Trail - Interpretive Displays - Sheltered Benches	- Connector Road and non-motorized trail - Shoreline Stabilization - Improve Bike/Hiking Trail	- Same as Alternative B



MU Number	MU Description	Existing MU Type	MU Goal(s) and Objectives	Alternative A No Action	Alternative B Developed Recreation	Alternative C Enhanced Recreation
22	Mule Deer Ridge	Multiple Use	Protect, conserve, restore, and enhance wildlife habitat and natural resources while providing minimum basic facilities to support the demand for diverse recreational opportunities; LUM 1.2, LUM 1.3, LUM 1.4, LUM 1.5 NAT 1.2, NAT 1.9, NAT 1.10, NAT 1.11, NAT 1.12, NAT 1.13 REC 1.2, REC 1.5, REC 1.6, REC 1.7, REC 1.8, REC 1.9, REC 1.11, REC 1.12 CR 1.1, CR 1.2, CR 1.3, CR 1.4		- Bike/Hiking Trail - Remove Fence along park boundary.	- Same as Alternative B