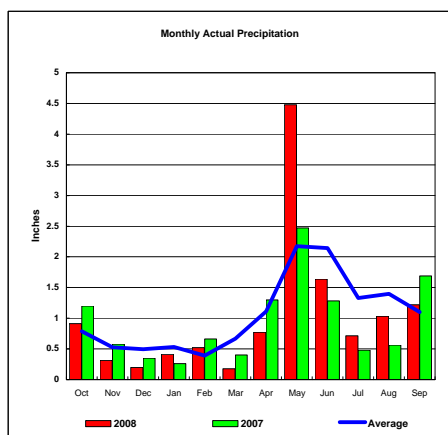
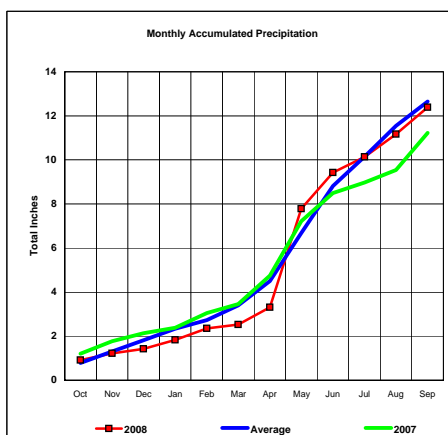


BASIN PRECIPITATION - ACTUAL MONTHLY vs AVERAGE MONTHLY TOTALS
 Data for the month of September 2008

Upper Missouri River Basin

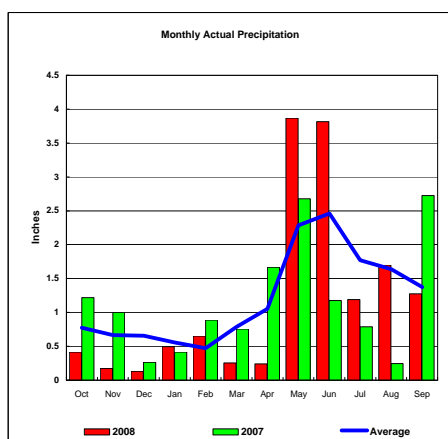


Total Actual Precipitation thru Sept (Inch.) - 12.38

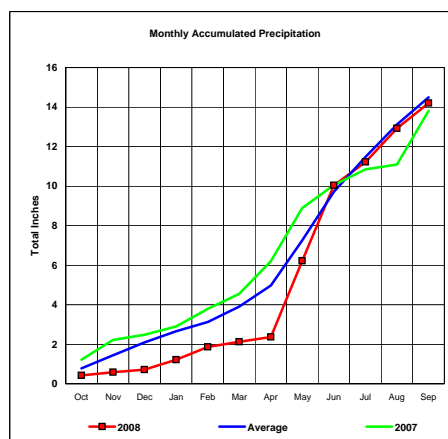


Total Average Precipitation thru Sept (Inch.) - 12.65
 Percent of Average for September - 97.89%

Milk River Basin

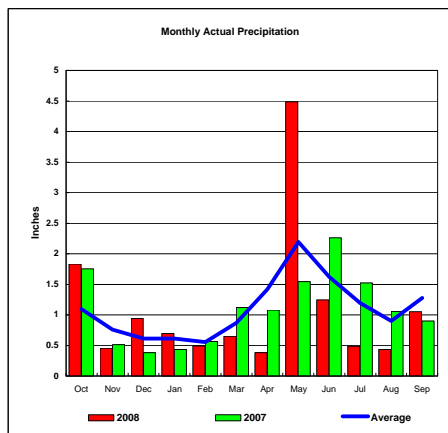


Total Actual Precipitation thru Sept (Inch.) - 14.21

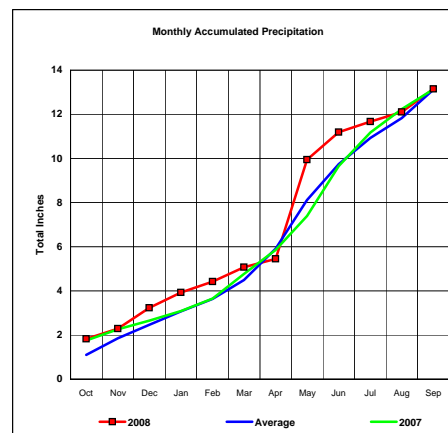


Total Average Precipitation thru Sept (Inch.) - 14.50
 Percent of Average for September - 98.00%

Bighorn River Basin



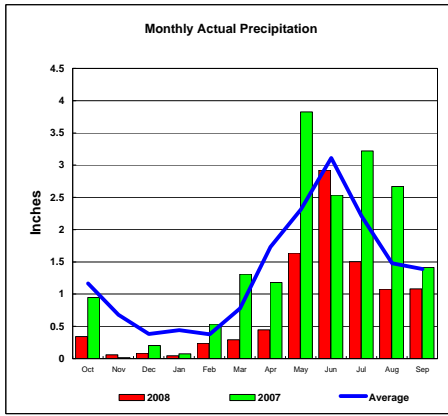
Total Actual Precipitation thru Sept (Inch.) - 13.15



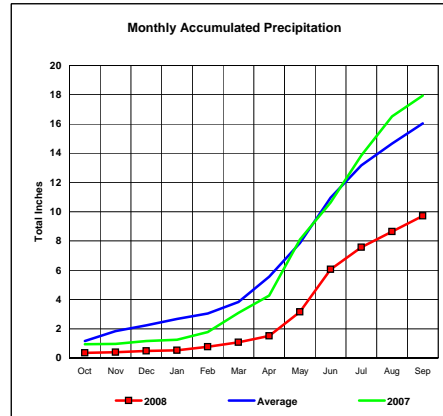
Total Average Precipitation thru Sept (Inch.) - 13.11
 Percent of Average for September - 100.31%

BASIN PRECIPITATION - ACTUAL MONTHLY vs AVERAGE MONTHLY TOTALS
Data for the month of September 2008

Heart River Basin

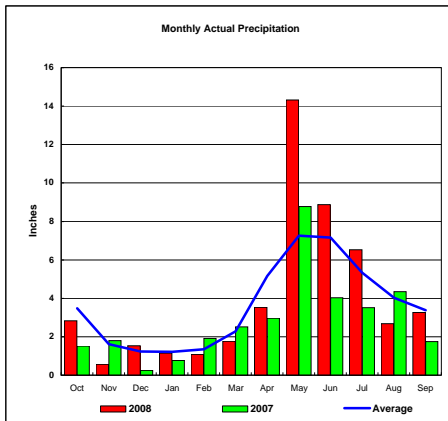


Total Actual Precipitation thru Sept (Inch.) - 9.73

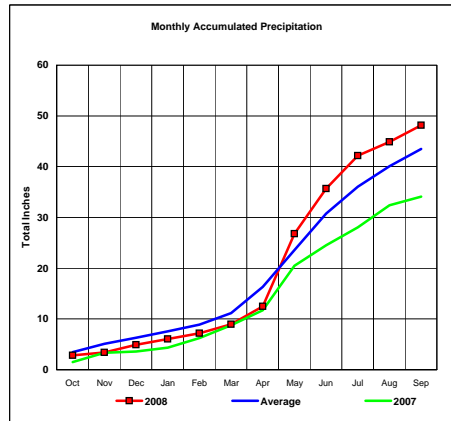


Total Average Precipitation thru Sept (Inch.) - 16.05
Percent of Average for September - 60.59%

Cheyenne River Basin

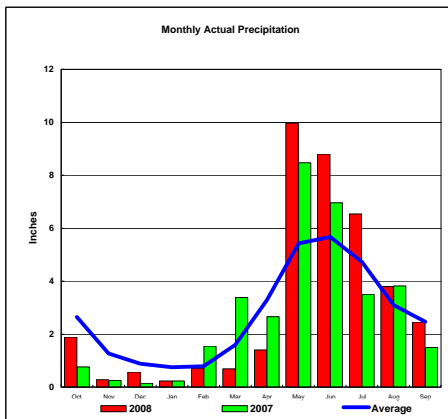


Total Actual Precipitation thru Sept (Inch.) - 48.12

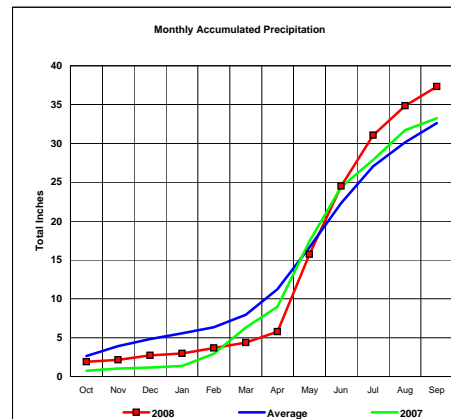


Total Average Precipitation thru Sept (Inch.) - 43.49
Percent of Average for September - 110.66%

Grand River Basin



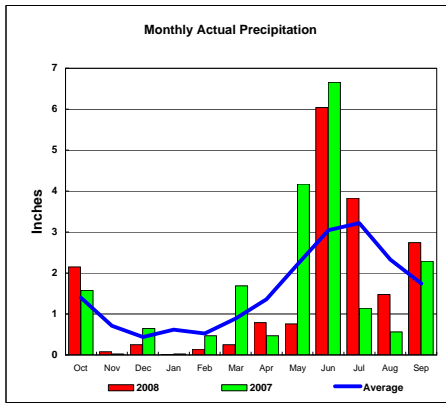
Total Actual Precipitation thru Sept (Inch.) - 37.31



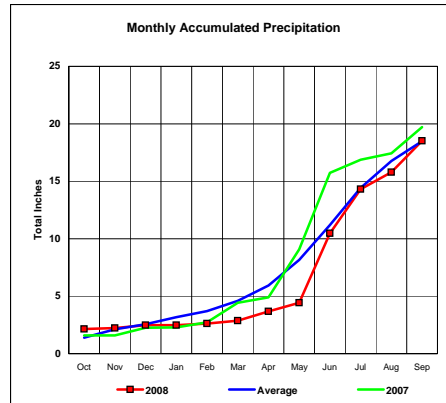
Total Average Precipitation thru Sept (Inch.) - 32.61
Percent of Average for September - 114.43%

BASIN PRECIPITATION - ACTUAL MONTHLY vs AVERAGE MONTHLY TOTALS
Data for the month of September 2008

James River Basin

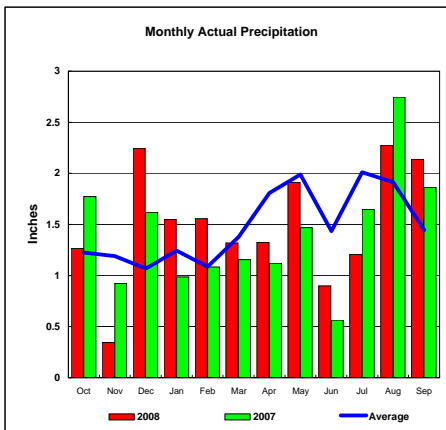


Total Actual Precipitation thru Sept (Inch.) - 18.52

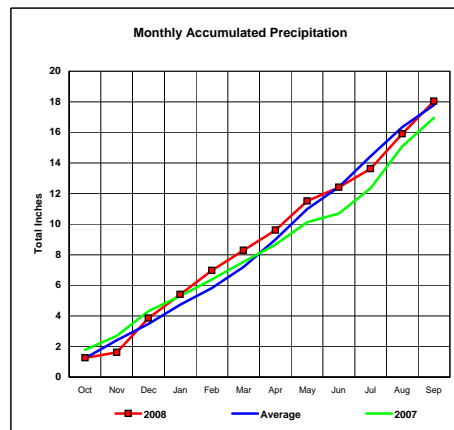


Total Average Precipitation thru Sept (Inch.) - 18.49
Percent of Average for September - 100.16%

Colorado-Big Thompson Project

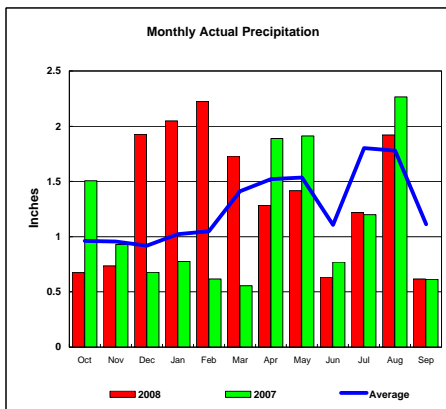


Total Actual Precipitation thru Sept (Inch.) - 18.03

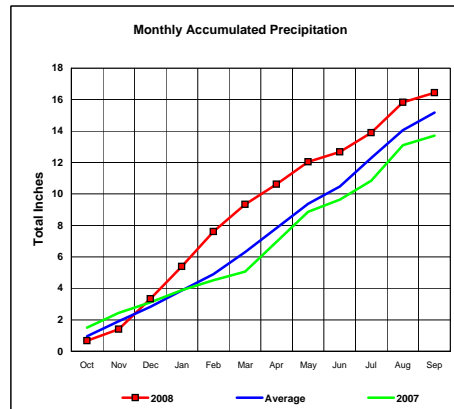


Total Average Precipitation thru Sept (Inch.) - 17.79
Percent of Average for September - 101.35%

Fryingpan-Arkansas Project



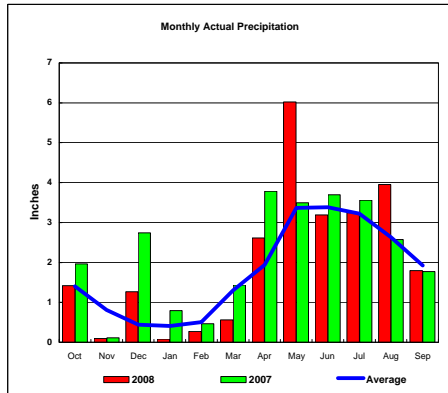
Total Actual Precipitation thru Sept (Inch.) - 16.43



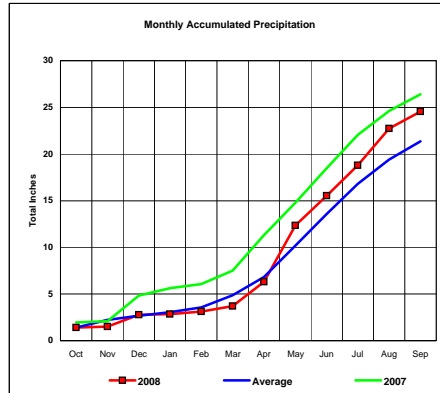
Total Average Precipitation thru Sept (Inch.) - 15.17
Percent of Average for September - 108.30%

BASIN PRECIPITATION - ACTUAL MONTHLY vs AVERAGE MONTHLY TOTALS
Data for the month of September 2008

Republican River Basin

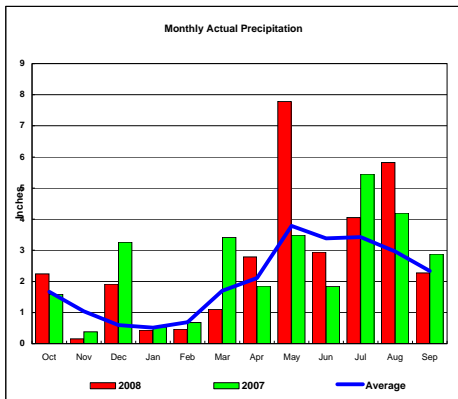


Total Actual Precipitation thru Sept (Inch.) - 24.53

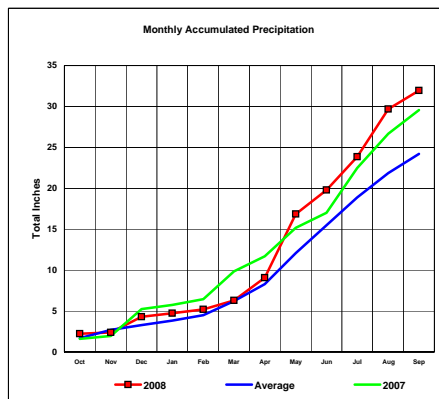


Total Average Precipitation thru Sept (Inch.) - 21.35
Percent of Average for September - 114.91%

Solomon River Basin

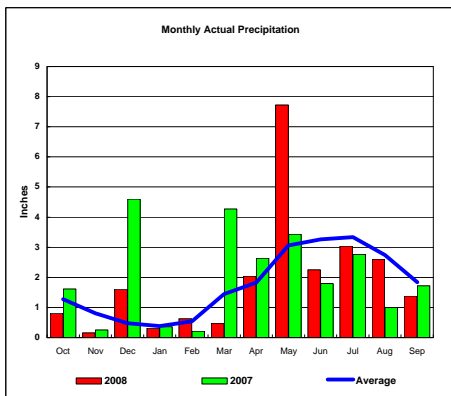


Total Actual Precipitation thru Sept (Inch.) - 31.95

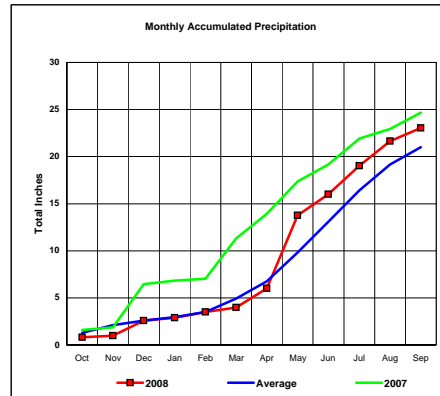


Total Average Precipitation thru Sept (Inch.) - 24.20
Percent of Average for September - 132.04%

Smoky Hill River Basin



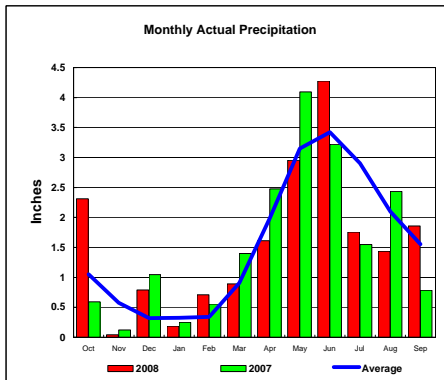
Total Actual Precipitation thru Sept (Inch.) - 23.02



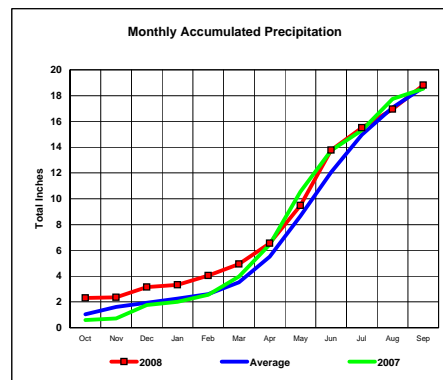
Total Average Precipitation thru Sept (Inch.) - 21.00
Percent of Average for September - 109.62%

BASIN PRECIPITATION - ACTUAL MONTHLY vs AVERAGE MONTHLY TOTALS
 Data for the month of September 2008

Niobrara River Basin

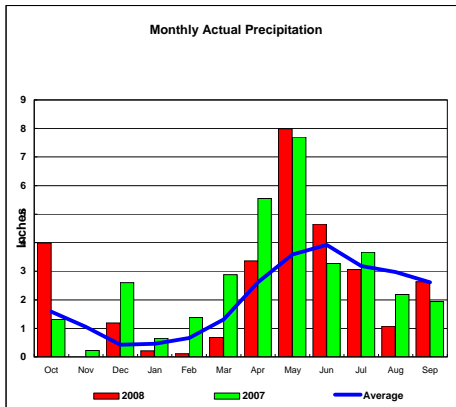


Total Actual Precipitation thru Sept (Inch.) - 18.81

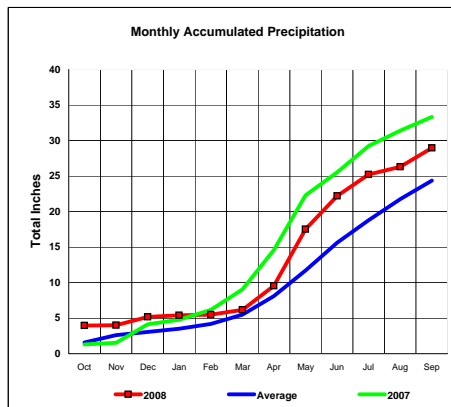


Total Average Precipitation thru Sept (Inch.) - 18.63
 Percent of Average for September - 100.97%

Lower Platte River Basin

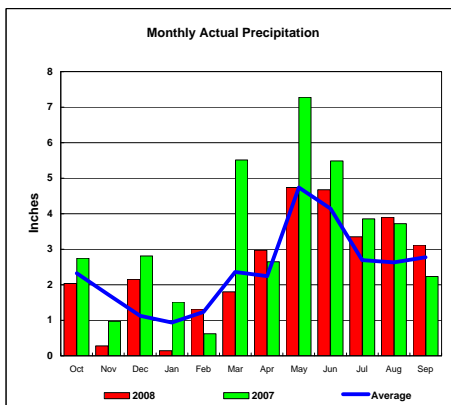


Total Actual Precipitation thru Sept (Inch.) - 28.96

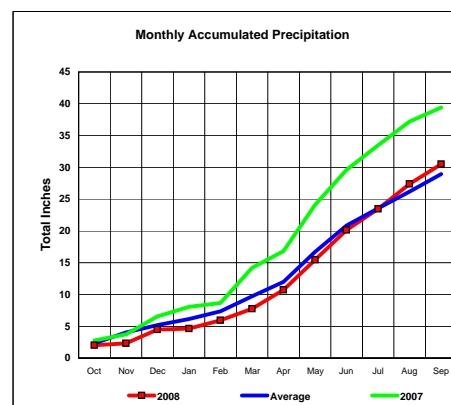


Total Average Precipitation thru Sept (Inch.) - 24.38
 Percent of Average for September - 118.81%

Arkansas River Basin



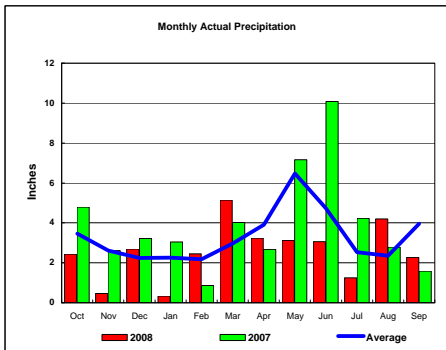
Total Actual Precipitation thru Sept (Inch.) - 30.49



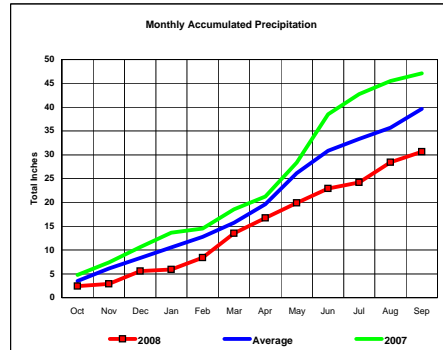
Total Average Precipitation thru Sept (Inch.) - 28.95
 Percent of Average for September - 105.34%

BASIN PRECIPITATION - ACTUAL MONTHLY vs AVERAGE MONTHLY TOTALS
Data for the month of September 2008

Red River Basin

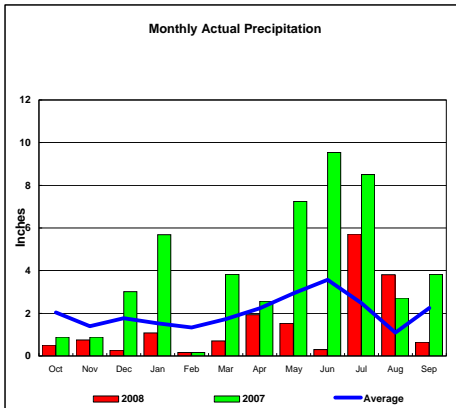


Total Actual Precipitation thru Sept (Inch.) - 30.67

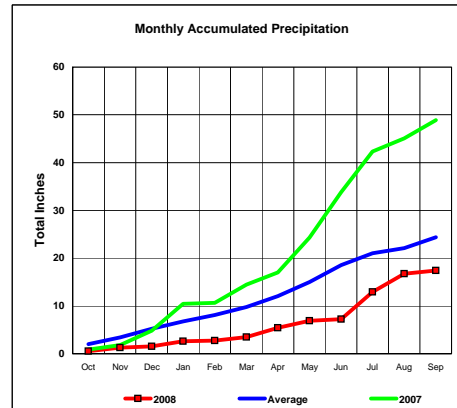


Total Average Precipitation thru Sept (Inch.) - 39.67
Percent of Average for September - 77.31%

Nueces River Basin

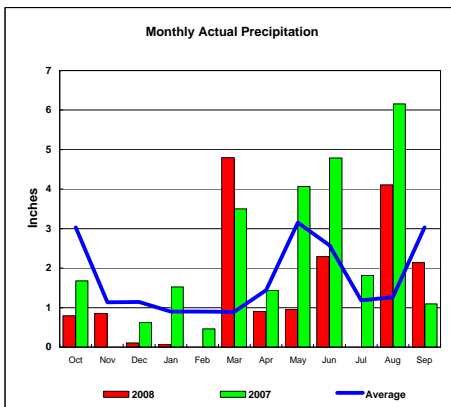


Total Actual Precipitation thru Sept (Inch.) - 17.40

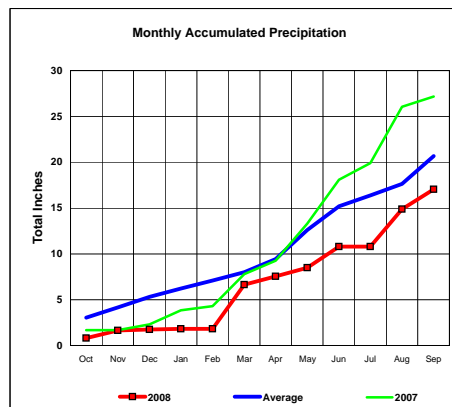


Total Average Precipitation thru Sept (Inch.) - 24.36
Percent of Average for September - 71.43%

Colorado River Basin



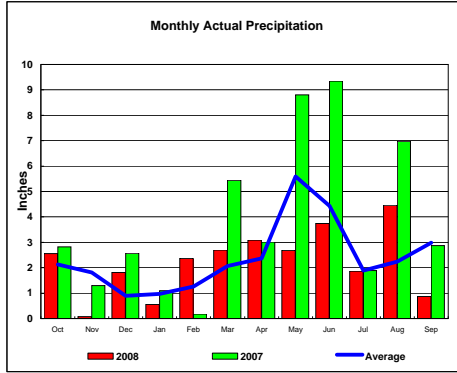
Total Actual Precipitation thru Sept (Inch.) - 17.04



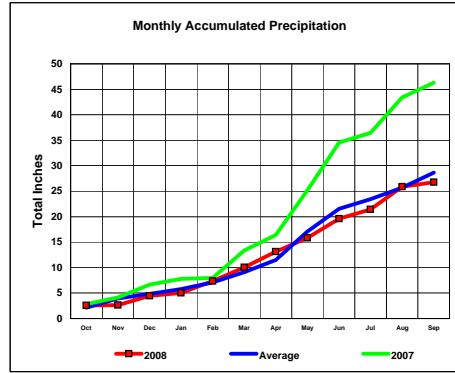
Total Average Precipitation thru Sept (Inch.) - 20.66
Percent of Average for September - 82.45%

BASIN PRECIPITATION - ACTUAL MONTHLY vs AVERAGE MONTHLY TOTALS
Data for the month of September 2008

Washita River Basin

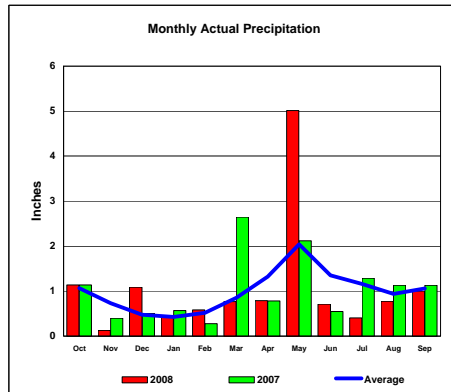


Total Actual Precipitation thru Sept (Inch.) - 26.77

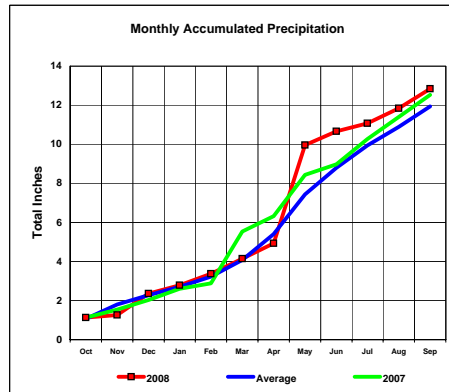


Total Average Precipitation thru Sept (Inch.) - 28.64
Percent of Average for September - 93.45%

North Platte River Basin



Total Actual Precipitation thru Sept (Inch.) - 12.84



Total Average Precipitation thru Sept (Inch.) - 11.94
Percent of Average for September - 107.50%