



*NWS Seattle*  
*Fire Weather Gallery*

# *NWS Seattle Dispatches 2000-2008*

## 2000

- *Cerro Grande Fire (5)*
- *Clear Creek Fire (6)*
- *Eastside Complex (7)*

## 2001

- *Thirtymile Fire (8)*
- *Icicle Complex (9)*

## 2002

- *Reese Fire (10)*
- *Deer Point Fire (11)*
- *Florence-Biscuit Fire (12)*
- *Office Bridge Fire (13)*

## 2003

- *TOPOFF Exercise (14)*
- *Fawn Peak Complex (15)*
- *Cramer Fire (16)*
- *Cathedral Pk Complex (17)*
- *Booth West Fire (18)*

## 2004

- *Pot Peak Complex (19)*

## 2005

- *Selendang AYU (20)*
- *King Co HAZMAT Ex (21)*
- *Blossom Complex (22)*
- *Granite Complex (23)*

**Note: ( ) = Page Number**

# *NWS Seattle Dispatches 2006-2008(Cont.)*

## *2006*

- *FT. Lewis Training Fire (24)*
- *Payette WFU (25)*
- *Flick Creek Fire & Tin Pan Fires (26)*
- *Maxwell Fire (27)*
- *Tripod Complex (28)*
- *Ralston Fire (29)*
- *In-Office Supported Wildfires (30)*

## *2007 (Continued)*

- *Poe Cabin Fire (34)*
- *Domke Lake Complex (35)*
- *Castle Rock Fire (36)*
- *In Office Spot Forecast Activities (37)*

## *2007*

- *Western Wa Training Fires (31)*
- *Boulder Creek/Tongue Complex (32)*
- *Ball Point Fire (33)*

**Note: ( ) = Page Number**

# *NWS Seattle Dispatches 2006-2008(Cont.)*

2008

- ??????????????? (38)

*Cerro Grande Fire  
Bandelier National  
Monument  
2000*





*Clear Creek Fire*  
*Salmon-Challis NF*  
*2000*



*Eastside Complex  
Wallowa-Whitman NF  
2000*



*Thirtymile Fire Investigation Team*  
*Okanogan-Wenatchee NF*  
*2001*



© Santilla Studios  
Winthrop, WA  
509.996.3402





*Icicle Complex*

*Okanogan-*

*Wenatchee NF*

*2001*



*Reese Fire  
Medicine Bow NF  
2002*



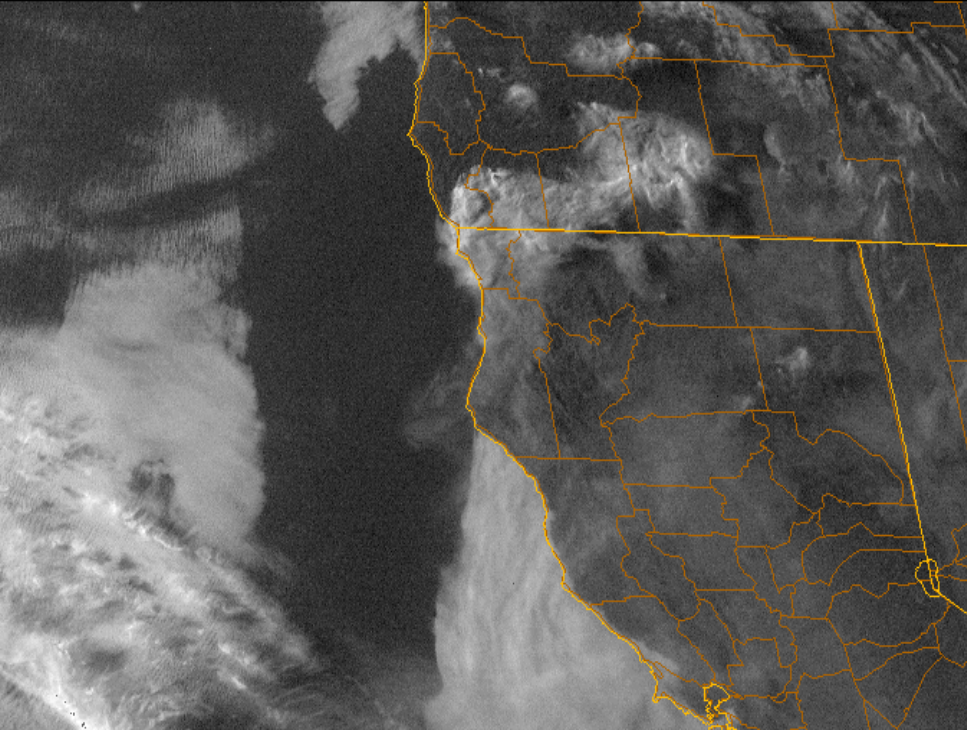


*Deer Point Fire*  
*Okanogan-Wenatchee*  
*NF*  
*2002*





***Florence-Biscuit Fire  
Siskiyou NF  
2002***



*Office Bridge Fire  
Willamette NF  
2002*



# *TOPOFF Exercise*

## *Seattle, WA*

*2003*



*Fawn Peak Complex  
Okanogan-Wenatchee*

*NF  
2003*



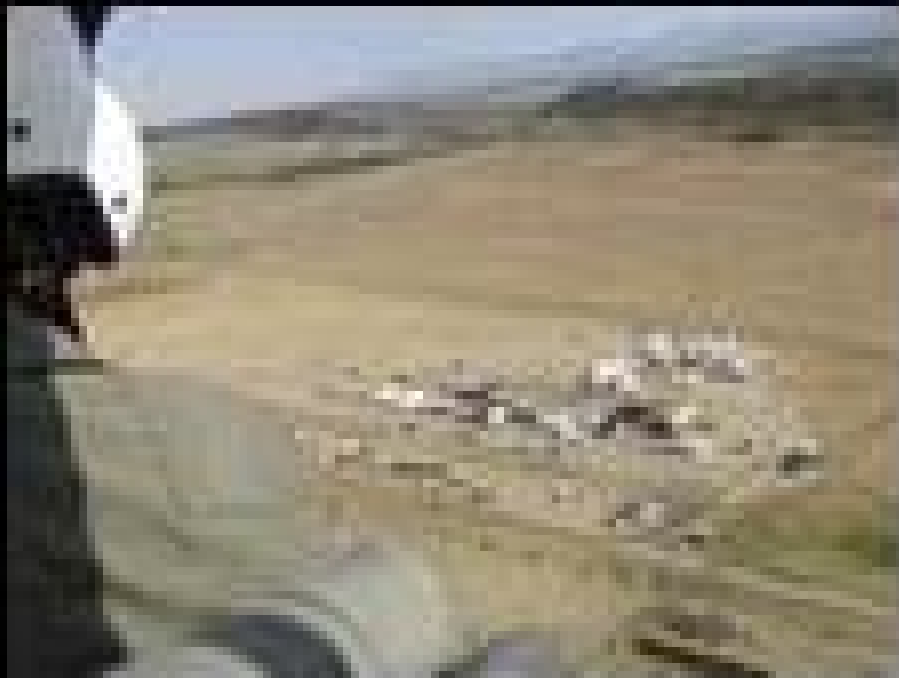
Cache Bar drainage  
West Ridge



*Cramer Fire Investigation Team  
Salmon – Challis NF  
2003*



*Cathedral Peak Complex*  
*Custer NF*  
*2003*



*Booth West  
Willamette NF*

*2003*





*Pot Peak – SiSi Ridge-  
Deep Harbor Complex  
Okanogan-Wenatchee*

*NF  
2004*



*Selendang AYU*  
*Dutch Harbor, AK*  
*2005*



*King County HAZMAT  
Exercise  
2005*





*Blossom Complex*  
*Siskiyou NF*  
*2005*





*Granite Complex  
Hells Canyon National Recreational Area  
2005*

*Ft. Lewis, WA  
Training Fire  
June 2006*





**Dunce Fire**



*Payette WFU  
(Dunce and Lick  
Fires)  
Payette NF  
July & August 2006*

**Lick Fire**



*Flick Creek &  
Tin Pan Fires  
North Cascades NP  
& Okanogan-Wenatchee NF  
July & August 2006*



**Tin Pan Fire**

**Flick Creek Fire**

*Maxwell Fire  
Ochoco NF  
July & August 2006*



***Tripod Complex  
Okanogan-  
Wenatchee NF  
August & September  
2006***



***Ralston Fire  
Tahoe NF  
September 2006***



**2006 In-Office Spot Forecast Supported Wildfires: *Flick Creek, Tin Pan, Carbon Copy, Bear Gulch II, Dewatto II, Greenwater 7440, Burpee Hill #2, Air Strip, South Loop, Birthday, Deer Mountain and Normandy View.***





# Mt. Erie Fire District & South Puget Sound Fire Schools - 2007



**Tongue Complex**



***Boulder Creek Fire  
& Tongue Complex***

***Boise BLM***

***July 2007***

**Old Maid Fire to the North of Jordan  
Valley ICP**



**Boulder Creek Fire**





**Ball Point Fire**  
**Mt. Hood NF**  
**July 2007**



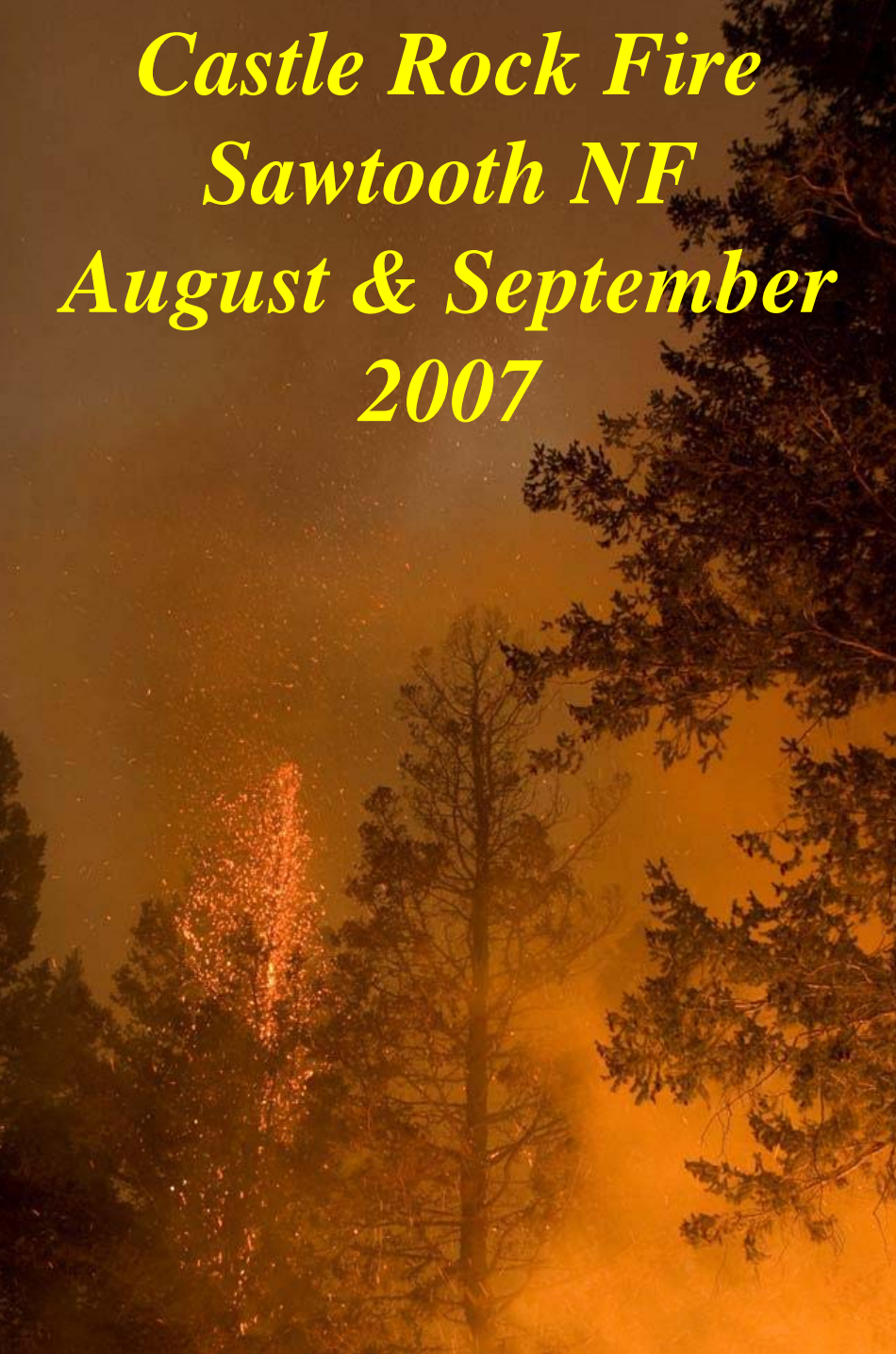
***Poe Cabin Fire***  
***Nez Perce NF and***  
***Wallowa-Whitman NF***  
***August 2007***



*Domke Lake Complex  
Okanogan-Wenatchee  
NF  
August 2007*



*Castle Rock Fire*  
*Sawtooth NF*  
*August & September*  
*2007*



Mudslide Area





**2007 in office Sport Forecast supported activities: Middle Fork WF, Jefferson CO SAR, Mt. Erie FD FS Burn, Stinson FS Burn, NW DNR/MBS FS Burn, Ft. Lewis/SPS DNR FS Burn, Ft. Lewis PBs, Brackenridge FS Burn, Iron Mtn WF, Shelton Valley WF, Tolo WF, E/V Milky Way Recovery, Clallam CO SAR, Imon WF, Common Wealth WF, Martin Road WF, Deer Park PB and Weaver PB.**

# Fire Season 2008 ????????????





*NWS Seattle  
Fire Weather Gallery  
To be continued...*