

# NOAA's NATIONAL WEATHER SERVICE Western Region Notes

January 24, 2006

## REGIONAL DIRECTOR'S OFFICE

**Western Region Bronze Medal Awards:** The 2005 NOAA Bronze Medal Awards were recently announced. Please join me in congratulating the following Western Region winners:

***WFO Glasgow:*** For life-saving service throughout record-breaking blizzards during the 2003-2004 winter season in northeast Montana.

***NAME Forecast Operations Center:*** For overcoming logistical, language, and scientific barriers to provide highly-detailed forecasts for the North American Monsoon Experiment, thereby improving relations with Mexico's weather service.

***Jeff Savadel (WFO Elko):*** Jeff is a member of a group that is recognized for their leadership in establishing the Coastal Storms Program and successfully completing the program's first pilot in Florida.

### **Communication Corner**

#### **Learning to Listen**

***By Brian Klimowski, WFO Flagstaff MIC***

*"Be a good listener. Your ears will never get you in trouble."* -Frank Tyger

Do you find yourself distracted easily when others are speaking to you? Do you judge the delivery of a presentation more than the message? Do you 'tune-out' people simply because of their track record, position, or appearance? Are you so interested in what *you* have to say that you listen mainly to find an opening to get your own words in? Do you give little or no feedback when someone is expressing something important to you? If so, be careful! You may be developing some poor listening habits.

Effective listening is critical to the development of good communication within the National Weather Service, and is an essential part of the collaboration process which, unfortunately, is frequently neglected. Listening is not a passive activity, but rather one which demands a great deal of mental effort and interaction to do well. Too many great ideas have been lost or not fully developed simply because participants in the communication were not fully engaged. Good listeners are valuable resource.

Nine tips to become a more effective listener:

**1) Pay Attention and Concentrate!** Give 100%. Your mind can process information over ten times faster than people can speak; it takes a great deal of concentration to listen well and keep your mind from wandering. Focus, focus, focus...they deserve your attention.

**2) Prove Understanding by Using Feedback and Asking Questions.** Marilyn Brennan (professional trainer and facilitator) makes a point of emphasizing that the two most important aspects of communication are *listening* and *asking questions*. When we ask questions we show the speaker that we heard what they said, and care enough to desire clarification or more information.

**3) Learn to Recognize Context and Body Language.** Most of the intended meaning of a message will come through body language and intonation. Recognize when people might be speaking from an ‘emotional’ perspective; it should be received and interpreted differently from messages sent from a more non-emotional (or ‘rational’) perspective.

**4) Don’t Insult the Speaker** by allowing interruptions to damage the communication. Remove distractions and give the speaker your full attention. NEVER interrupt.

**5) Focus on Content, Not Delivery.** Have you ever counted the number of times someone says “um”, or clears their throat? If so, you weren’t focusing on content.

**6) Prove Respect.** Prove that you take their point of view seriously, even if you disagree. Be careful of what your body language may be saying (rolling eyes, lack of eye contact, facial expressions, mannerisms, etc).

**7) Show You Are Interested** through eye contact.

**8) Let it be Known if You Don’t Have Time to Listen.** As Mr. Nick Seta (facilitator at the Executive Leadership Seminar) explains so well, do not allow others to engage you in a conversation if you’re not ready. Take a moment and finish what you’re doing, then commit to listening.

**9) Don’t be Influenced by Who is Talking, but Rather What is Being Said.** Don’t let the way someone acts, looks, or talks, get in the way.

Stay tuned, coming up in the next Communication Corner: The communication of collaboration.



(R to L) WR Director Vickie Nadolski, new Seattle MIC Brad Colman, and Chris Hill

**WFO Seattle MIC Chris Hill Retires:** WFO Seattle MIC Chris Hill recently retired after 35 years of service to the National Weather Service. His retirement dinner was held on January 20 at the Boeing Flight Museum in Seattle. Close to 90 people attended for a send off to Chris and his wife, Maryl.

A super-sized photo album that highlighted Chris’s career, accomplishments, and people he has worked with over the years was available for people to sign. Chris noted the event was wonderful and deeply appreciated everyone’s efforts and for attending a most memorable evening.

## **METEOROLOGICAL SERVICES DIVISION**

**Statement of the Week:** This Red Flag Warning, issued by Todd Morris at WFO Oxnard, provides a good overview of this strong Santa Ana event for fire weather customers. The discussion is non-

technical and explicitly notes that while minor improvement of weather conditions may occur Monday night and early Tuesday morning, fire agency officials should expect critical Red Flag conditions until Tuesday evening. This information allows a fire agency to better plan when to make firefighting resource changes. Good job Todd and WFO Oxnard.

WWUS86 KLOX 232304  
RFLWLOX

RED FLAG WARNING  
NATIONAL WEATHER SERVICE LOS ANGELES/OXNARD CA  
304 PM PST MON JAN 23 2006

...A RED FLAG WARNING CONTINUES THROUGH 6 PM TUESDAY AFTERNOON FOR STRONG WINDS AND LOW HUMIDITIES FOR THE MOUNTAINS OF SANTA BARBARA...VENTURA...AND LOS ANGELES COUNTIES...AS WELL AS THE VALLEYS AND COASTS OF LOS ANGELES AND VENTURA COUNTIES...

.STRONG NORTHEAST WINDS ARE BLOWING ACROSS SOUTHERN CALIFORNIA TODAY. THE STRONGEST WINDS ARE BLOWING ACROSS A BROAD CORRIDOR EXTENDING FROM THE ANTELOPE VALLEY TO THE COASTS OF VENTURA AND LOS ANGELES COUNTIES. GUSTS OF NEAR 70 MPH IN THE MOUNTAINS...NEAR 65 MPH OVER THE COASTAL SLOPES...AND 50 MPH ALONG THE COASTS ARE OCCURRING. ALONG WITH THE STRONG WINDS...RELATIVE HUMIDITIES HAVE FALLEN TO CRITICAL LEVELS. WIDESPREAD AREAS OF RELATIVE HUMIDITIES BELOW 15 PERCENT ARE OCCURRING WITH SOME AREAS SEEING SINGLE DIGITS. WHILE SOME TEMPORARY WEAKENING OF THE RED FLAG CONDITIONS ARE EXPECTED TONIGHT...STRONG WINDS AND VERY LOW HUMIDITIES ARE EXPECTED TO RETURN TO THE REGION ON TUESDAY. THUS...THE RED FLAG WARNING CONTINUES THROUGH TUESDAY AFTERNOON.

CAZ253-254-241730-  
/O.CON.KLOX.FW.W.0001.000000T0000Z-060125T0200Z/  
VENTURA COUNTY MOUNTAINS / LOS PADRES NATIONAL FOREST-  
LOS ANGELES COUNTY MOUNTAINS / ANGELES NATIONAL FOREST-  
304 PM PST MON JAN 23 2006

...RED FLAG WARNING REMAINS IN EFFECT UNTIL 6 PM PST TUESDAY FOR STRONG WINDS AND LOW HUMIDITIES...

A RED FLAG WARNING REMAINS IN EFFECT UNTIL 6 PM PST TUESDAY FOR STRONG WINDS AND LOW HUMIDITIES.  
NORTHEAST WINDS OF 35 TO 45 MPH ARE OCCURRING WITH LOCAL GUSTS UP TO 70 MPH THROUGH PASSES AND CANYONS. STRONG NORTHEAST WINDS ARE EXPECTED TO CONTINUE TONIGHT AND TUESDAY MORNING. HUMIDITY LEVELS BETWEEN 10 AND 15 PERCENT CAN BE EXPECTED FOR SEVERAL HOURS DURING THIS EVENT...WITH SOME LOCATIONS REPORTING SINGLE DIGIT HUMIDITIES.

A RED FLAG WARNING MEANS THAT CRITICAL FIRE WEATHER CONDITIONS ARE EITHER OCCURRING NOW...OR WILL SHORTLY. A COMBINATION OF STRONG WINDS AND LOW RELATIVE HUMIDITY WILL CREATE EXPLOSIVE FIRE GROWTH POTENTIAL.

PLEASE ADVISE THE APPROPRIATE OFFICIALS OR FIRE CREWS IN THE FIELD OF THIS RED FLAG WARNING.

\$\$

CAZ246-241730-  
/O.CON.KLOX.FW.W.0001.000000T0000Z-060125T0200Z/  
SANTA MONICA MOUNTAINS RECREATIONAL AREA-  
304 PM PST MON JAN 23 2006

...RED FLAG WARNING REMAINS IN EFFECT UNTIL 6 PM PST TUESDAY FOR STRONG WINDS AND LOW HUMIDITIES...

A RED FLAG WARNING REMAINS IN EFFECT UNTIL 6 PM PST TUESDAY FOR STRONG WINDS AND LOW HUMIDITIES.

NORTHEAST WINDS OF 35 TO 45 MPH ARE OCCURRING WITH LOCAL GUSTS UP TO 65 MPH THROUGH AND BELOW PASSES AND CANYONS. STRONG NORTHEAST WINDS ARE EXPECTED TO CONTINUE TONIGHT AND TUESDAY MORNING. HUMIDITY LEVELS BETWEEN 10 AND 15 PERCENT CAN BE EXPECTED FOR SEVERAL HOURS DURING THIS EVENT...WITH SOME LOCATIONS REPORTING SINGLE DIGIT HUMIDITIES.

A RED FLAG WARNING MEANS THAT CRITICAL FIRE WEATHER CONDITIONS ARE EITHER OCCURRING NOW...OR WILL SHORTLY. A COMBINATION OF STRONG WINDS AND LOW RELATIVE HUMIDITY WILL CREATE EXPLOSIVE FIRE GROWTH POTENTIAL. PLEASE ADVISE THE APPROPRIATE OFFICIALS OR FIRE CREWS IN THE FIELD OF THIS RED FLAG WARNING.

\$\$

CAZ244-245-247-288-241730-  
/O.CON.KLOX.FW.W.0001.000000T0000Z-060125T0200Z/  
VENTURA COUNTY INTERIOR VALLEYS-VENTURA COUNTY COASTAL VALLEYS-  
LOS ANGELES COUNTY VALLEYS-SANTA CLARITA VALLEY-  
304 PM PST MON JAN 23 2006

...RED FLAG WARNING REMAINS IN EFFECT UNTIL 6 PM PST TUESDAY FOR STRONG WINDS AND LOW HUMIDITIES...

A RED FLAG WARNING REMAINS IN EFFECT UNTIL 6 PM PST TUESDAY FOR STRONG WINDS AND LOW HUMIDITIES.

NORTHEAST WINDS OF 30 TO 40 MPH ARE OCCURRING WITH LOCAL GUSTS TO 60 MPH THROUGH AND BELOW PASSES AND CANYONS. STRONG NORTHEAST WINDS ARE EXPECTED TO CONTINUE TONIGHT AND TUESDAY MORNING. HUMIDITY LEVELS BETWEEN 10 AND 15 PERCENT CAN BE EXPECTED FOR SEVERAL HOURS DURING THIS EVENT...WITH SOME LOCATIONS REPORTING SINGLE DIGIT HUMIDITIES.

A RED FLAG WARNING MEANS THAT CRITICAL FIRE WEATHER CONDITIONS ARE EITHER OCCURRING NOW...OR WILL SHORTLY. A COMBINATION OF STRONG WINDS AND LOW RELATIVE HUMIDITY WILL CREATE EXPLOSIVE FIRE GROWTH POTENTIAL. PLEASE ADVISE THE APPROPRIATE OFFICIALS OR FIRE CREWS IN THE FIELD OF THIS RED FLAG WARNING.

\$\$

CAZ240-241-241730-  
/O.CON.KLOX.FW.W.0001.000000T0000Z-060125T0200Z/  
VENTURA COUNTY COAST-LOS ANGELES COUNTY COAST-  
304 PM PST MON JAN 23 2006

...RED FLAG WARNING REMAINS IN EFFECT UNTIL 6 PM PST TUESDAY FOR STRONG WINDS AND LOW HUMIDITIES...

A RED FLAG WARNING REMAINS IN EFFECT UNTIL 6 PM PST TUESDAY FOR STRONG WINDS AND LOW HUMIDITIES.

NORTHEAST WINDS OF 20 TO 30 MPH ARE OCCURRING WITH LOCAL GUSTS TO 50 MPH BELOW PASSES AND CANYONS. THESE STRONG NORTHEAST WINDS ARE EXPECTED TO CONTINUE TONIGHT AND TUESDAY MORNING. THE STRONGEST WINDS IN LOS ANGELES COUNTY ARE EXPECTED TO BE FOCUSED FROM MALIBU THROUGH THE HOLLYWOOD HILLS. HUMIDITY LEVELS BETWEEN 10 AND 15 PERCENT CAN BE EXPECTED FOR SEVERAL HOURS DURING THIS EVENT...WITH SOME LOCATIONS REPORTING SINGLE DIGIT HUMIDITIES.

A RED FLAG WARNING MEANS THAT CRITICAL FIRE WEATHER CONDITIONS ARE EITHER OCCURRING NOW...OR WILL SHORTLY. A COMBINATION OF STRONG WINDS AND LOW RELATIVE HUMIDITY WILL CREATE EXPLOSIVE FIRE GROWTH POTENTIAL. PLEASE ADVISE THE APPROPRIATE OFFICIALS OR FIRE CREWS IN THE FIELD OF THIS RED FLAG WARNING.

\$\$

CAZ252-241730-  
/O.CON.KLOX.FW.W.0001.000000T0000Z-060125T0200Z/  
SANTA BARBARA COUNTY MOUNTAINS / LOS PADRES NATIONAL FOREST-  
304 PM PST MON JAN 23 2006

...RED FLAG WARNING REMAINS IN EFFECT UNTIL 6 PM PST TUESDAY FOR STRONG WINDS AND LOW HUMIDITIES...

A RED FLAG WARNING REMAINS IN EFFECT UNTIL 6 PM PST TUESDAY FOR STRONG WINDS AND LOW HUMIDITIES.

NORTHEAST WINDS OF 20 TO 30 MPH ARE OCCURRING WITH LOCAL GUSTS TO 45 MPH EXPECTED THROUGH AND BELOW PASSES AND CANYONS... MAINLY FROM SANTA BARBARA EASTWARD. STRONG NORTHEAST WINDS ARE EXPECTED TO CONTINUE

TONIGHT AND TUESDAY MORNING. HUMIDITY LEVELS BETWEEN 10 AND 15 PERCENT CAN BE EXPECTED FOR SEVERAL HOURS DURING THIS EVENT...WITH SINGLE DIGIT HUMIDITIES POSSIBLE IN SOME LOCATIONS.

A RED FLAG WARNING MEANS THAT CRITICAL FIRE WEATHER CONDITIONS ARE EITHER OCCURRING NOW...OR WILL SHORTLY. A COMBINATION OF STRONG WINDS AND LOW RELATIVE HUMIDITY WILL CREATE EXPLOSIVE FIRE GROWTH POTENTIAL. PLEASE ADVISE THE APPROPRIATE OFFICIALS OR FIRE CREWS IN THE FIELD OF THIS RED FLAG WARNING.

\$\$

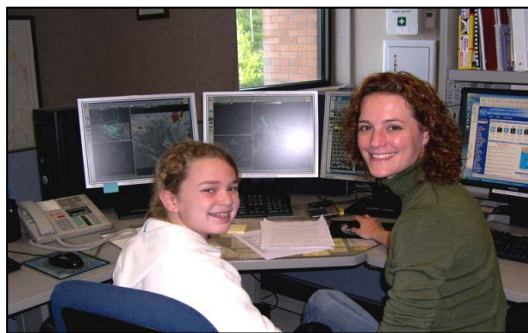
TRM



*DHS/FEMA Hurricane Course Attendees.*

#### **San Diego WCM Attends Hurricane Workshop:**

WFO San Diego was represented at a Workshop at the National Hurricane Center (NHC) in early January. Ed Clark, San Diego's WCM, attended this 4-day "Hurricane Readiness" workshop, sponsored by FEMA and DHS. The workshop reviewed NHC's hurricane operations and products. The workshop, which used a "train the trainer" approach, also covered preparedness, evacuations, and hazards as they relate to tropical weather systems. Besides Ed, the workshop was attended by 12 other NWS Meteorologists and 13 Emergency Managers from Texas, Louisiana, the northeast states and Puerto Rico.



*Monterey Intern Brooke Bingaman (right) mentors 6<sup>th</sup> grade student (left).*

#### **Monterey Intern Helps "Women In Science in Mentoring"**

**Program:** As part of the "Women in Science Mentoring" program, Monterey Meteorologist Intern Brooke Bingaman recently helped Mariana Bianchi, an 11-year-old (6th grade) student from the Alpha Beacon Christian School in San Mateo, California.

Mariana's project was to make a display board featuring hurricanes, with details of a weather experiment which she designed.

**NWS Honored for Amber Alert Assistance in California:** The California Highway Patrol held a ceremony on January 13 to commemorate the 10<sup>th</sup> anniversary of the Amber Alert Program and to thank the media and the National Weather Service for help in disseminating Amber Alerts in California. Every child for whom an Amber Alert has been issued in California has been safely recovered, including several who were abducted to Mexico. Elizabeth Morse, the MIC in Sacramento, accepted a plaque from Commissioner Mike Brown on behalf of all California offices. The plaque says,

*"The ability for the California Highway Patrol to issue an Amber Alert became more effective and efficient in 2005 when the National Weather Service generously agreed to disseminate alerts for the Department. Over seventy Amber Alerts have been issued in the state since the inception of the*

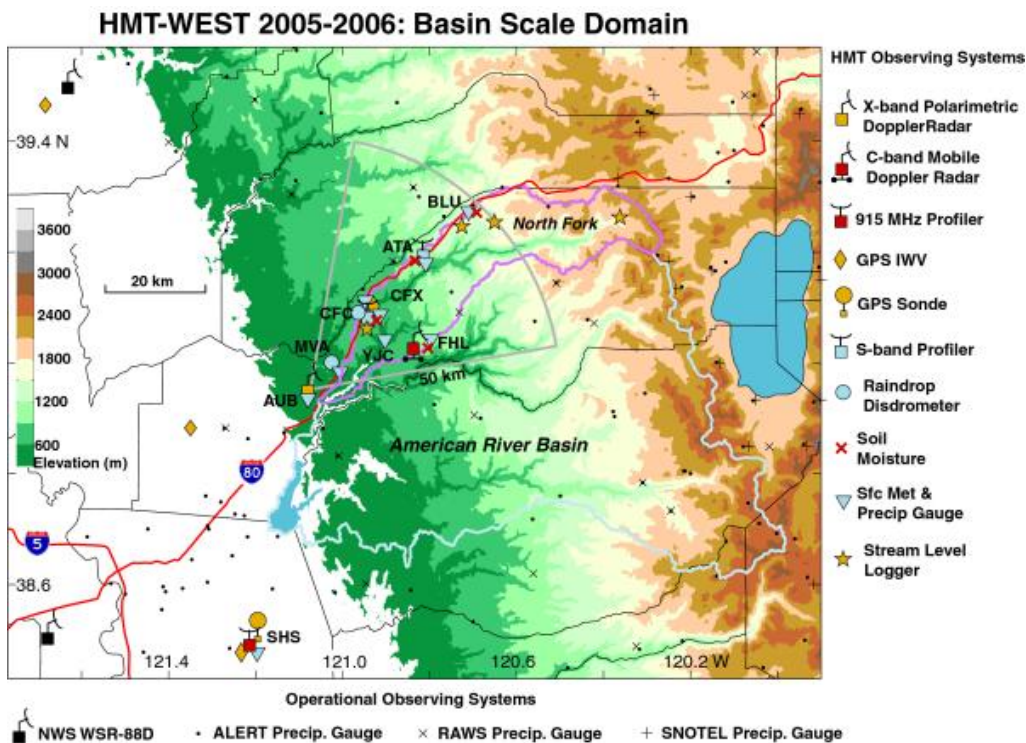
*California Child Safety Amber Network, resulting in the safe recovery of over one hundred children. The valued partnership between the National Weather Service and the California Highway Patrol will help ensure the continued success of the California Child Safety Amber Alert Network to safely recover abducted children. Resolved: By the Commissioner of the California Highway Patrol and his staff that we commend you and join the citizens of the State of California in extending gratitude to the National Weather Service for their service to this state.”*

**Seattle Boat Show:** WFO Seattle staffed a booth at the annual Seattle Boat Show at the Qwest Field Event Center on January 6-13. The show dates were moved up and shortened this year to accommodate the NFL's Seattle Seahawk playoff schedule. About 45,000 people attended the show. The booth focused on NWS products and services, including marine services, NWR, WFO Seattle's web site, NDFD, and Washington Weather Hazards and Marine Weather DVDs.



**Fire Extinguisher Training at Hanford:** Daisy Noceda, WFO Hanford's ASA, uses a fire extinguisher to put out a test fire in front of the Hanford NWS Office. The training is conducted annually for NWS staff.

## SCIENTIFIC SERVICES DIVISION



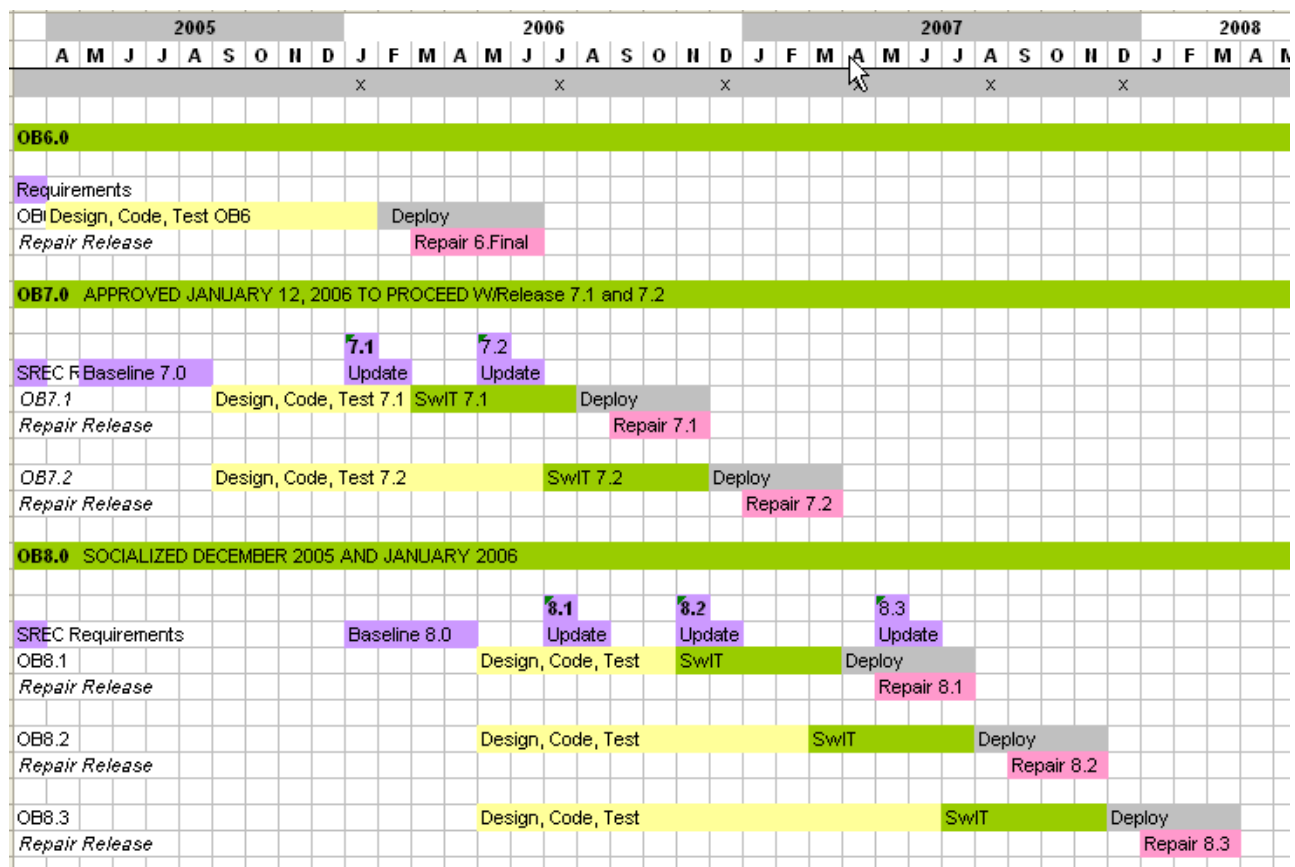
**HMT Update:** The OAR Hydromet Test-bed (HMT) is currently completing the eighth (8) Intensive Operating Period (IOP). So far, the HMT has captured several impressive meteorological and hydrological events on the American River near Sacramento. HMT is an OAR program to help improve

operations through the use of better science and technology and runs through March 23, 2006. The Sacramento RFC HAS, Sacramento WFO, and Reno WFO are the primary WR offices participating in the HMT. For more information and data: <http://www.etl.noaa.gov/programs/2006/hmt/>.

**Required Training Reminder:** The COMET module "NWS Support during Hazardous Materials Emergencies" is required to be completed by April 30, 2006. Please refer to RD memo sent to each WR MIC and HIC for more information. The COMET module is available through the NOAA E-Learning system at <http://e-learning.doc.gov/noaa/>.

**Web WWA Map:** NWSHQ has created a team to simplify and standardize the WWA maps on the web. Craig Schmidt (MSD) is the WR representative and Aaron Sutula (SSD) is providing technical guidance.

**AWIPS Build Process:** The new AWIPS contractors (Raytheon and Kleen) are taking over responsibility for supporting AWIPS. The graphic below highlight the proposed AWIPS build structure. The SREC (Mark Mollner/SSD) is working to update the data and application enhancements assigned to each specific build. Once NWSHQ releases this information, we will send a copy to each WR office.



### Upcoming Science Workshops

**Annual AMS Meeting - Jan 29 - Feb 2:** The Annual meeting of the American Meteorological Society (AMS) will be held January 29 to February 2, 2006 in Atlanta. Please refer to the web



site [www.ametsoc.org/meet/annual](http://www.ametsoc.org/meet/annual) for details. WR attendance is restricted to those who have been pre-approved.

**Pacific Northwest Weather Workshop - March 3-4:** The Pacific Northwest Weather Workshop will be held Friday and Saturday, March 3 and 4, 2006, at the NOAA Western Regional Center campus at Sand Point in Seattle, Washington. This annual conference, sponsored by the National Weather Service, University of Washington, and Puget Sound Chapter of the American Meteorological Society, covers recent developments in weather forecasting and observational technologies, major weather events of the past year, and topics dealing with Western U.S. meteorology.

Pre-registration is required for all attendees. You are encouraged you to visit the web site at: [www.atmos.washington.edu/~cliff/PNW2006.html](http://www.atmos.washington.edu/~cliff/PNW2006.html) for latest information and on-line registration. For more information contact:

Brad Colman  
NWS Forecast Office  
206.526.6095 x 224/222  
brad.colman@noaa.gov

Clifford Mass  
Univ. of Washington  
Dept of Atmospheric Sciences  
Box 351640, Seattle WA 98195  
206.685.0190, cliff@atmos.washington.edu

**Climate Prediction Applications Science Workshop – March 21-24:** The National Weather Service Climate Services Division, in conjunction with the University of Arizona Climate Assessment for the Southwest and Arizona Cooperative Extension is hosting the Fourth Climate Prediction Applications Science Workshop (CPASW) at the Westward Look Resort in Tucson, Arizona, on March 21-24, 2006. The deadline for on-line registration is February 1, 2006. <http://cals.arizona.edu/climate/CPASW2006/index.htm>

### **New WR Science Publications**

#### **WR TA-Lite 05-16**

*Post-Christmas 2003 Heavy Snow Event for Central Montana*

by John Blank, WFO Great Falls, MT

<http://www.wrh.noaa.gov/wrh/talite0516.pdf>

#### **WR TA-Lite 05-17**

*Elevated Convection over Northwest California*

by Eric Lau and Mel Nordquist, WFO Eureka, CA

<http://www.wrh.noaa.gov/wrh/talite0517.pdf>

#### **WR TA-Lite 05-18**

*An Examination of a Barrier Jet in the Sacramento Valley Using the Weather Event Simulator (WES)*

by James Mathews and John Juskie, WFO Sacramento, CA

<http://www.wrh.noaa.gov/wrh/talite0518.pdf>

#### **WR TA-Lite 05-19**

*A WES Case Analysis of a Heavy Snow Event over Northeast Nevada on March 23, 2005*

by Steven L. Apfel, WFO Elko, NV  
<http://www.wrh.noaa.gov/wrh/talite0519.pdf>

**WR TA-Lite 05-20**

*Winter 2006 WES Case: The 25 February 2004 San Francisco Urban Flash Flood Event*  
 Warren Blier, WFO San Francisco, CA  
<http://www.wrh.noaa.gov/wrh/talite0520.pdf>

**Training Update**

**NWSTC Update:** If you sign up for a NWSTC course and are selected, it is important that you attend as planned. Training resources are extremely limited and people selected for training should plan well in advance on attending the course.

If there are extra-ordinary reasons (i.e. unexpected major illness in family) that develop that will affect your attendance, you must notify your MIC/HIC and WRHQ (Mark Mollner) as soon as possible. This will allow time to fill the slot, but again, this should only be a rare case.

**COMET Module:** Comet has released two new training modules:

**Unit Hydrograph Theory:** This module offers a thorough introduction to the use of unit hydrographs and the application of unit hydrograph theory in flood prediction. This module explains key terminology and assumptions, outlines the steps in creation of a unit hydrograph, examines the issues surrounding application of unit hydrograph theory, and discusses important considerations for forecasters. The module may be found at: <http://www.meted.ucar.edu/hydro/basic/UnitHydrograph/index.htm> and requires approximately 1-2 hours to complete.

**Wave Life Cycle II: Propagation and Dispersion:** This is the third in a series of training modules on marine wind and waves. The goal of the module is to enable a marine forecaster to manually predict how the wave height and period will change as the waves leave their generation area, become swell, and then propagate and disperse into the forecaster's offshore coastal waters. While numerical wave prediction models can provide swell height and period forecasts, they are dependent on accurate wind forecasts by atmospheric prediction models. Therefore, manual skills in determining swell height and period are needed in order to cross-check or correct model predictions in cases of poor or unresolved model forecasts of winds. The module is approximately 60 minutes in length and may be found at: [http://meted.ucar.edu/marine/mod3\\_wlc\\_propdis/index.htm](http://meted.ucar.edu/marine/mod3_wlc_propdis/index.htm)

**WDTB AWOC:** Congratulations to WDTB for winning the bronze medal for the Severe Weather Training Module! The AWOC Winter Track is required to be completed by **November 30, 2006**. The AWOC Winter Track curriculum has **not** yet been posted to the WDTB home page: <http://www.wdtb.noaa.gov/courses/winterawoc/index.html>. The course will be posted to the LMS home page by late Spring with facilitator teletraining beginning by April 2006. The course will require 12-15 hours to complete which includes two winter WES cases. Please refer to the memo sent to each MIC and HIC for more details

**Teletraining Sessions for February:** The Virtual Institute for Satellite Integration Training (VISIT) calendar for February is now available. Offices can register for the teletraining sessions by sending email to: [visit@comet.ucar.edu](mailto:visit@comet.ucar.edu). The teletraining calendar is now at: <http://rammb.cira.colostate.edu/visit/ecal.asp>

The teletraining planning calendar with other sessions is at: <http://rammb.cira.colostate.edu/visit/planning.html>

The current sessions planned for February are:

- NEW - GOES Sounder Data and Products  
(Basic, Feb 3,6,15,20,28 )
- GOES High Density Winds  
(Basic, Feb 9)
- Cyclogenesis: Analysis utilizing Geostationary Satellite Imagery  
(Basic, Feb 2,15)
- Utilizing GOES Imagery within AWIPS to Forecast Winter Storms  
(Intermediate, Feb 7,8)
- Forecasting Convective Downburst Potential Using GOES Sounder Derived Products  
(Basic, Feb 9)

Several recorded VISIT session are available via LMS: <http://e-learning.doc.gov/coursecatalog/index.cfm>. Then, go to National Weather Service Courses and search on VISIT.

All previous sessions including those with recorded instructor audio and annotations are available at: <http://rammb.cira.colostate.edu/visit/ts.html>

## **SYSTEMS OPERATIONS DIVISION**

**SOD:** Bob Diaz and Sean Wink are traveling to NWSH in Silver Spring to participate in the annual SOD/EPM Meeting.

### **Safety:**

- Harold Knocke is developing an MSDS quick-reference first-aid guide that is planned for distribution to field offices by the end of February, 2006.
- Joe Duran, the NOAA regional safety manager from WASC is visiting Salt Lake City this week to perform safety inspections at the local NWS facilities.

### **Communications:**

- Steve Keene is traveling to WFO Boise this week to upgrade the phone system and replace the voicemail system.

### **Electronics:**

- Gar Nelson TDY to Flagstaff for AWIPS support.
- Kevin Bolton is in Spokane for RRS inspection.
- Merri Richmond is installing a NWR in Eureka this week.

- Joe Lachacz completed an electronics and Facilities program review at the Eureka Weather Service Forecast Office. One result from the program review will be to upgrade the HF antenna which is used for receiving spotter reports.

**Facilities:**

- Lee Jenson will provide support for UPS upgrades at WFOs Hanford and Eureka in February, and at WFOs Pendleton and Spokane in March.

**IT:**

- The cutover to displaying the new ridge radar products on the regional web farms will likely be delayed two weeks from the planned January 31<sup>st</sup> cutover.