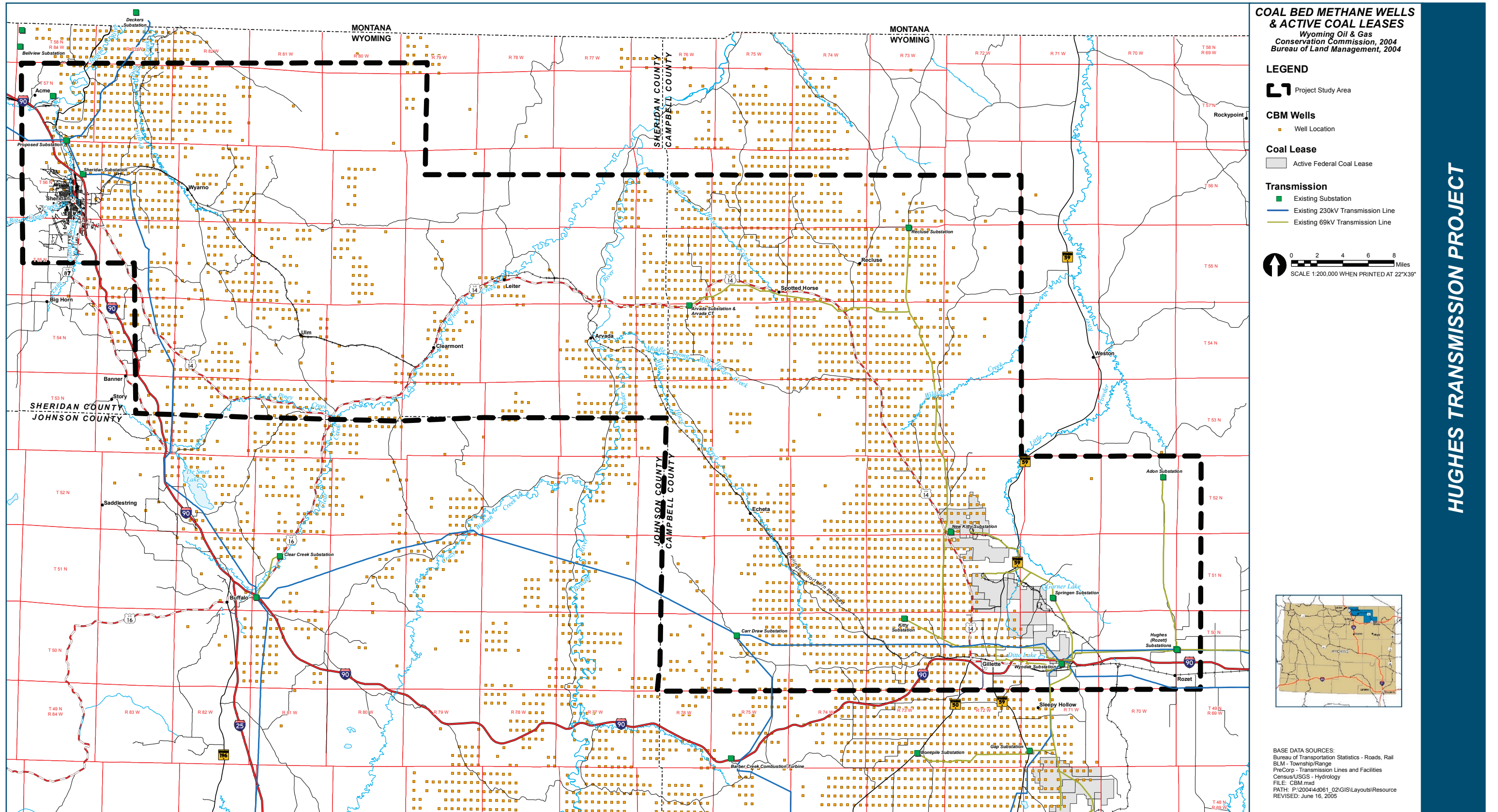


Figure 1-1 Project Study Area



HUGHES TRANSMISSION PROJECT

Figure 2-3 Coal Bed Methane Production

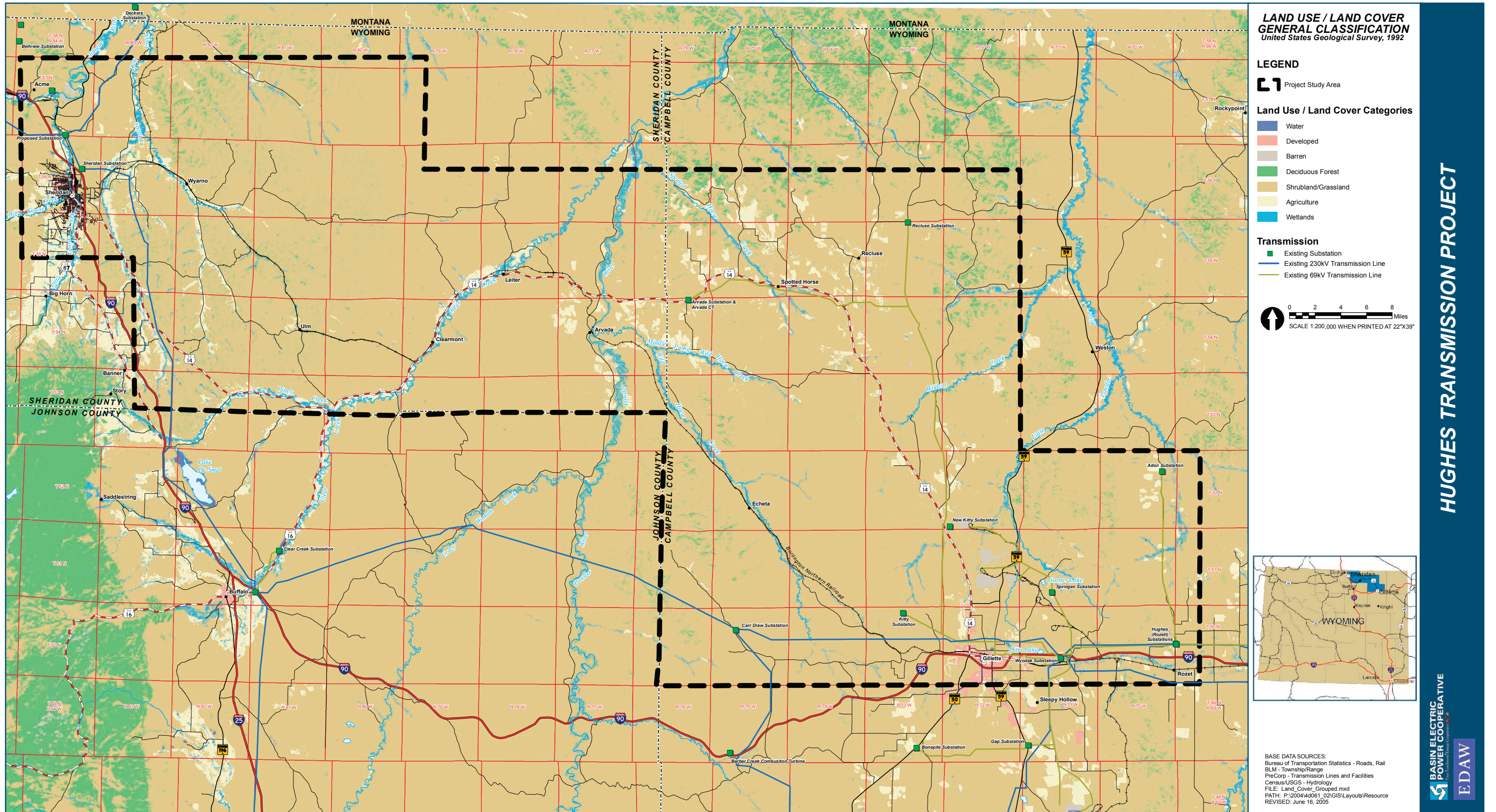


Figure 3-2 Land Use/Land Cover

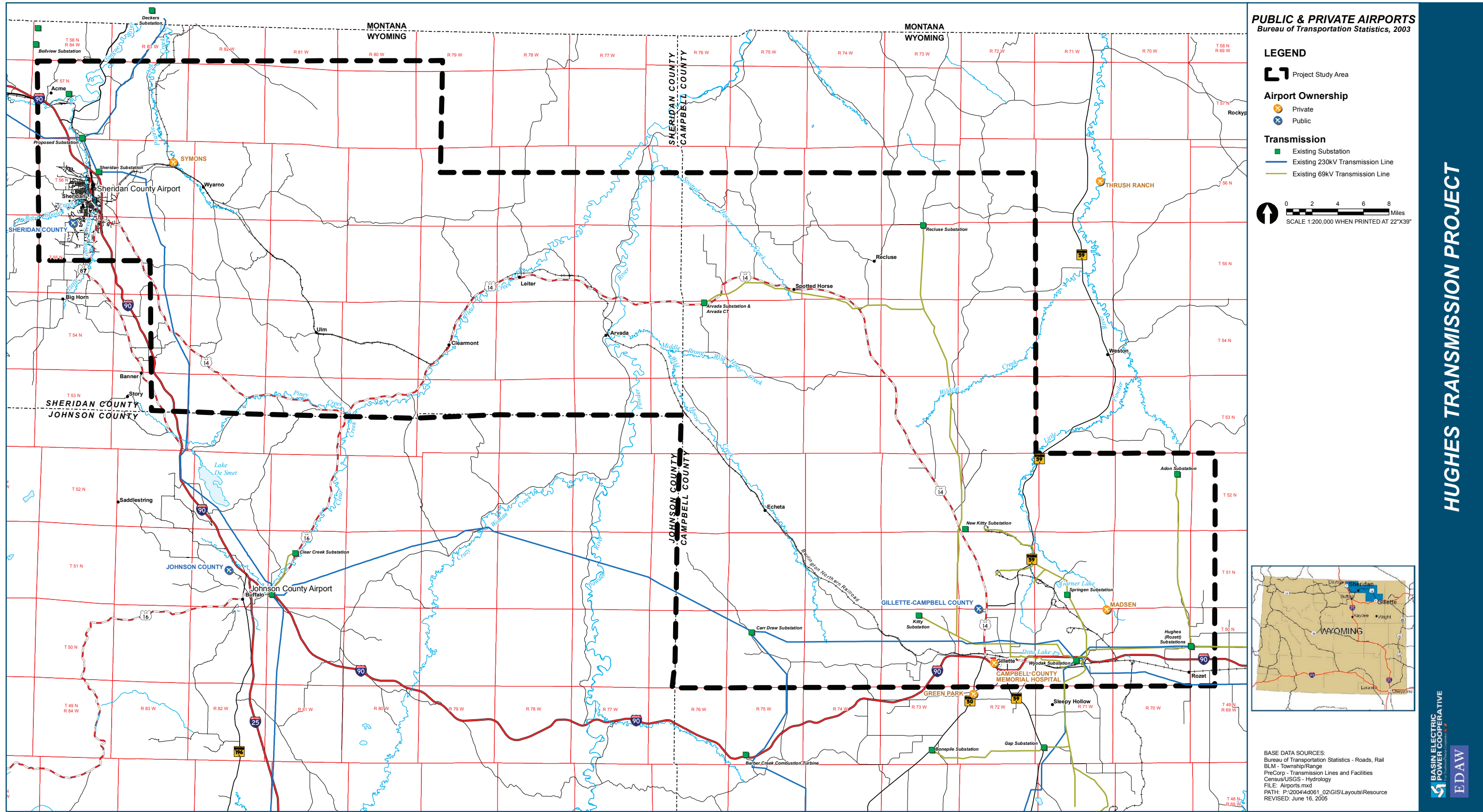


Figure 3-3 Public and Private Airports

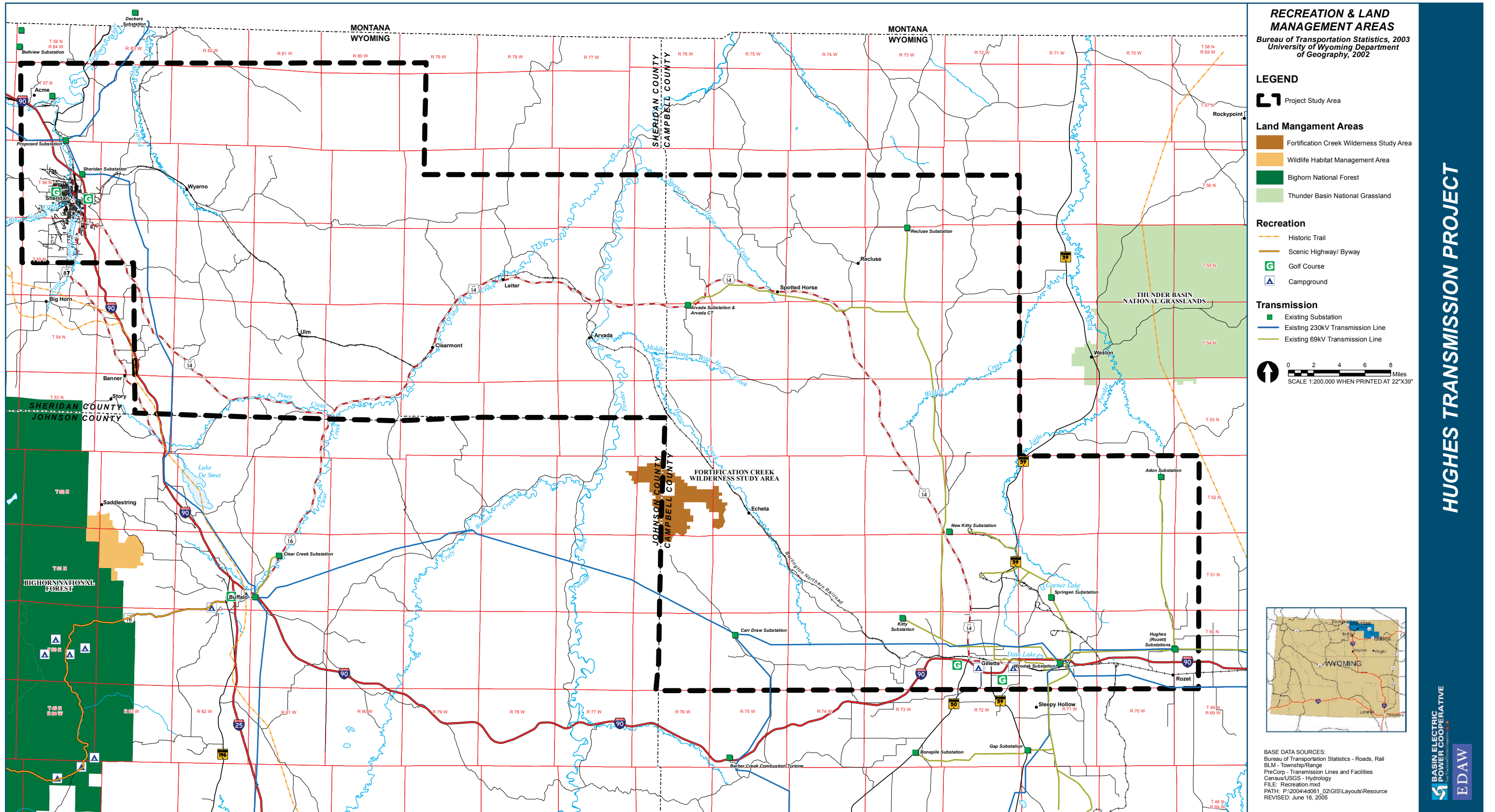


Figure 3-4
 Recreation and Land Management Areas

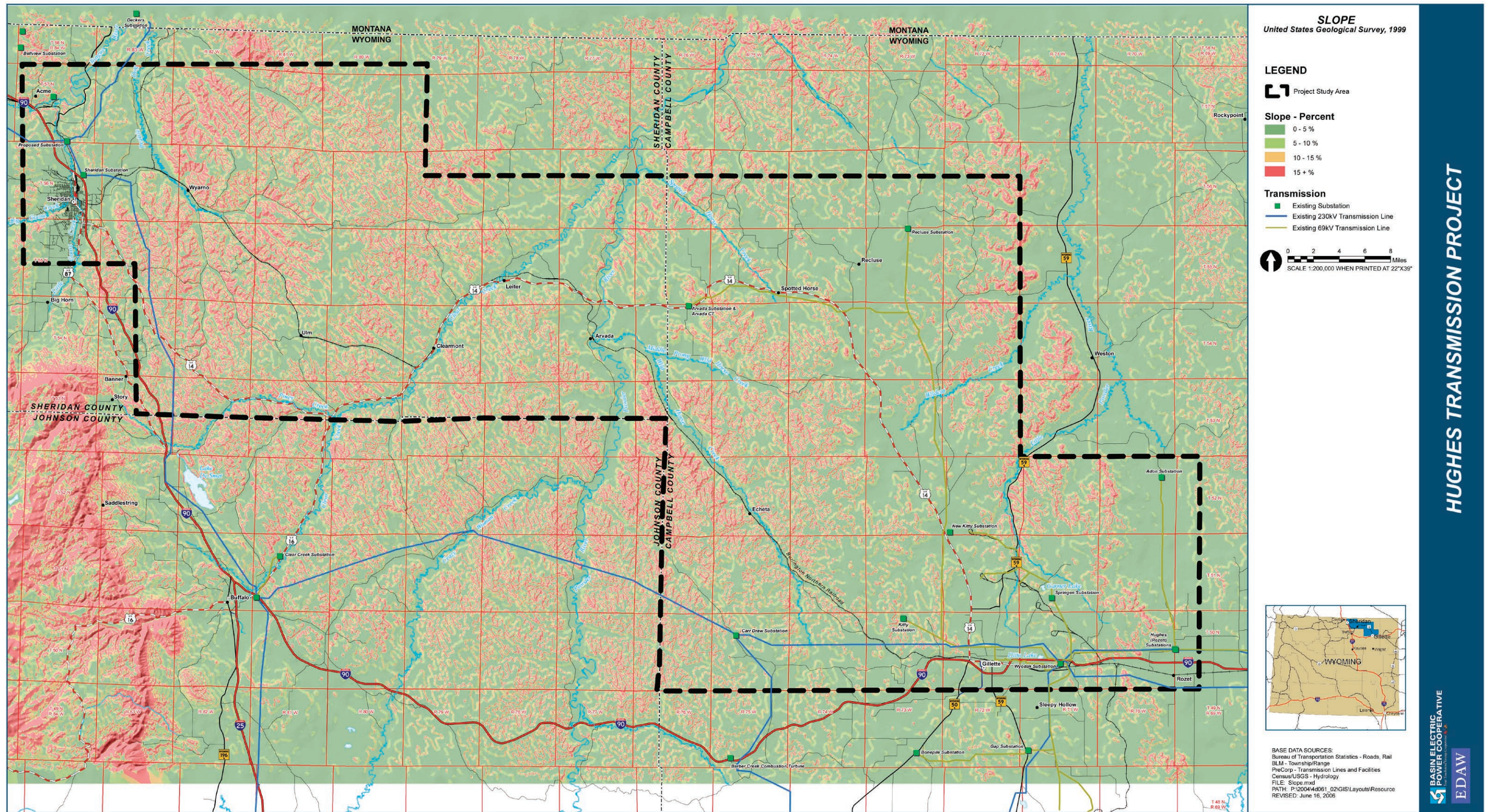


Figure 3-5 Slope

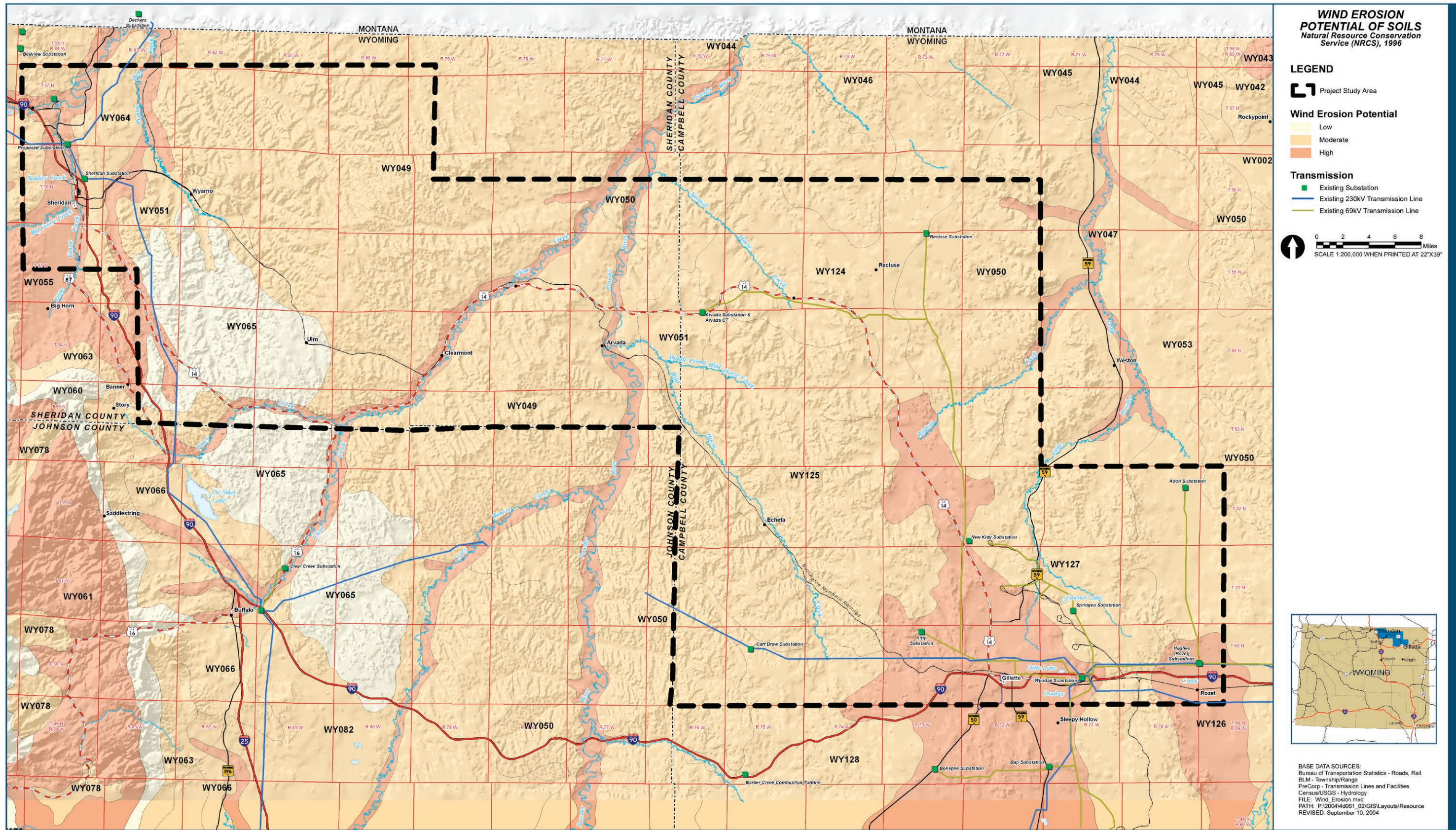


Figure 3-6 Wind Erosion Potential of Soils

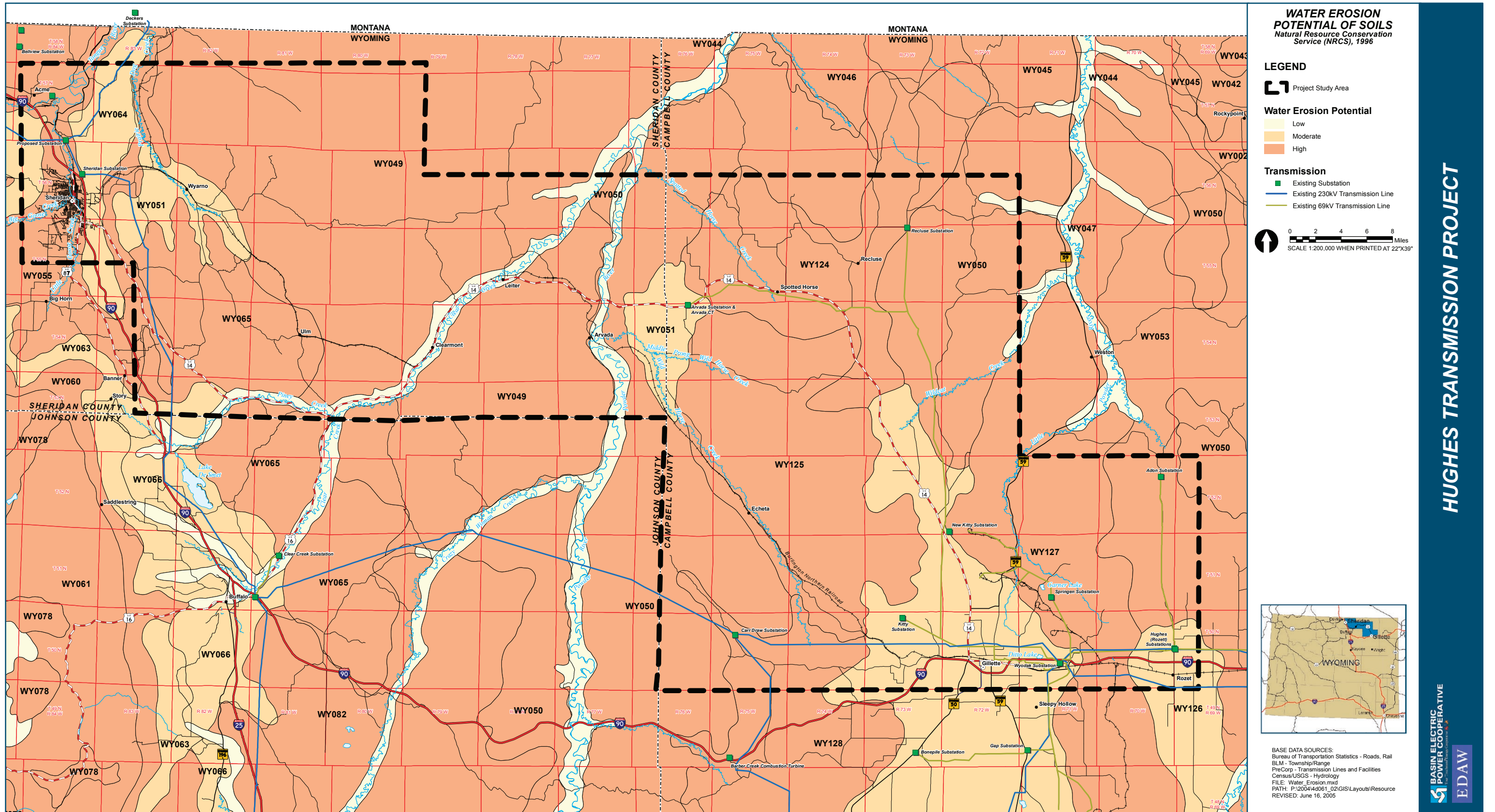
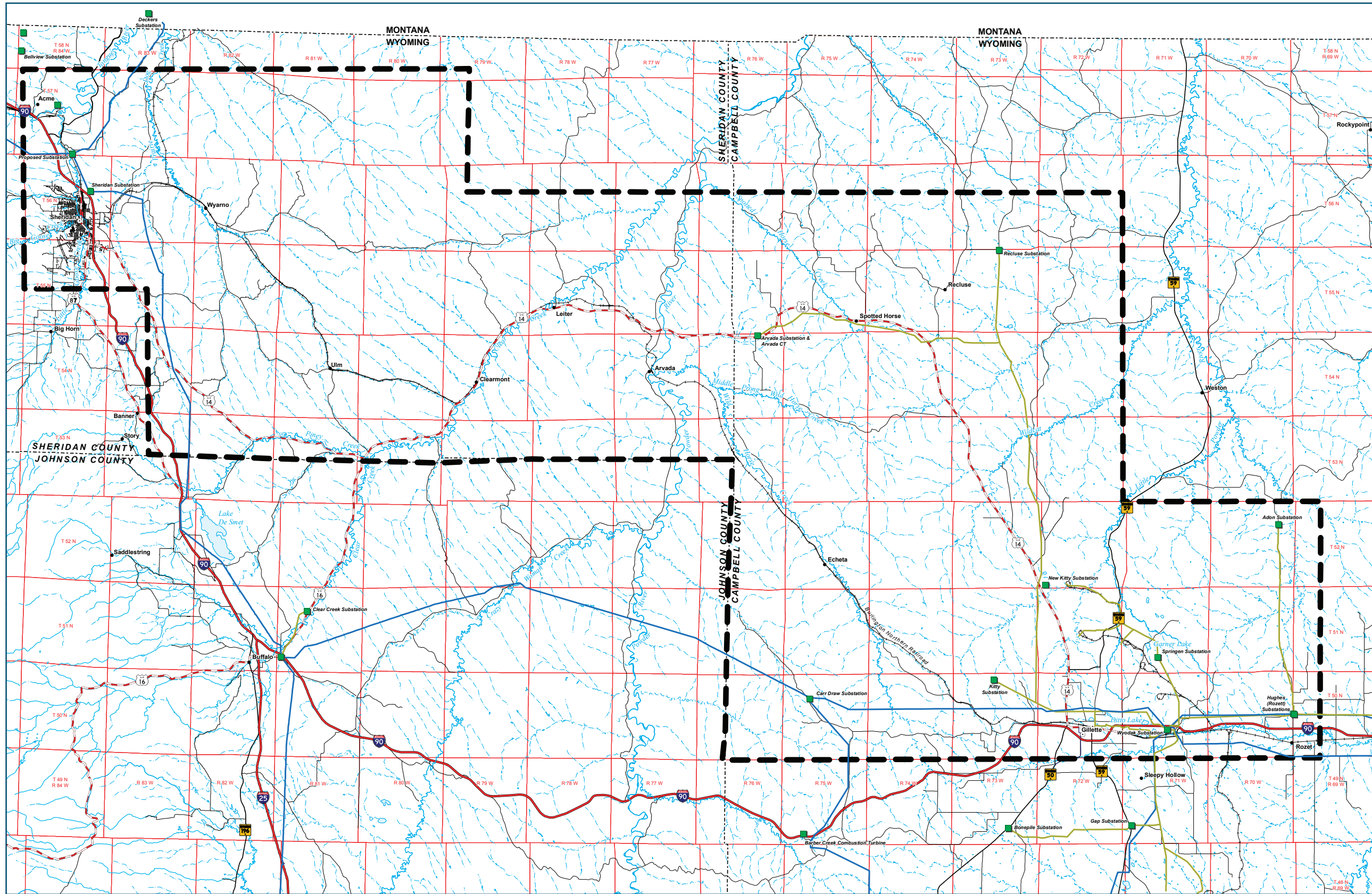


Figure 3-7
Water Erosion Potential of Soils



SURFACE WATER
U.S. Census Bureau, 2003

LEGEND

- Project Study Area
- Hydrography - Surface Water
 - Perennial Stream or River
 - Intermittent Stream or River
 - Lake
- Transmission
 - Existing Substation
 - Existing 230kV Transmission Line
 - Existing 69kV Transmission Line

0 2 4 6 8 Miles
SCALE 1:200,000 WHEN PRINTED AT 22"x39"

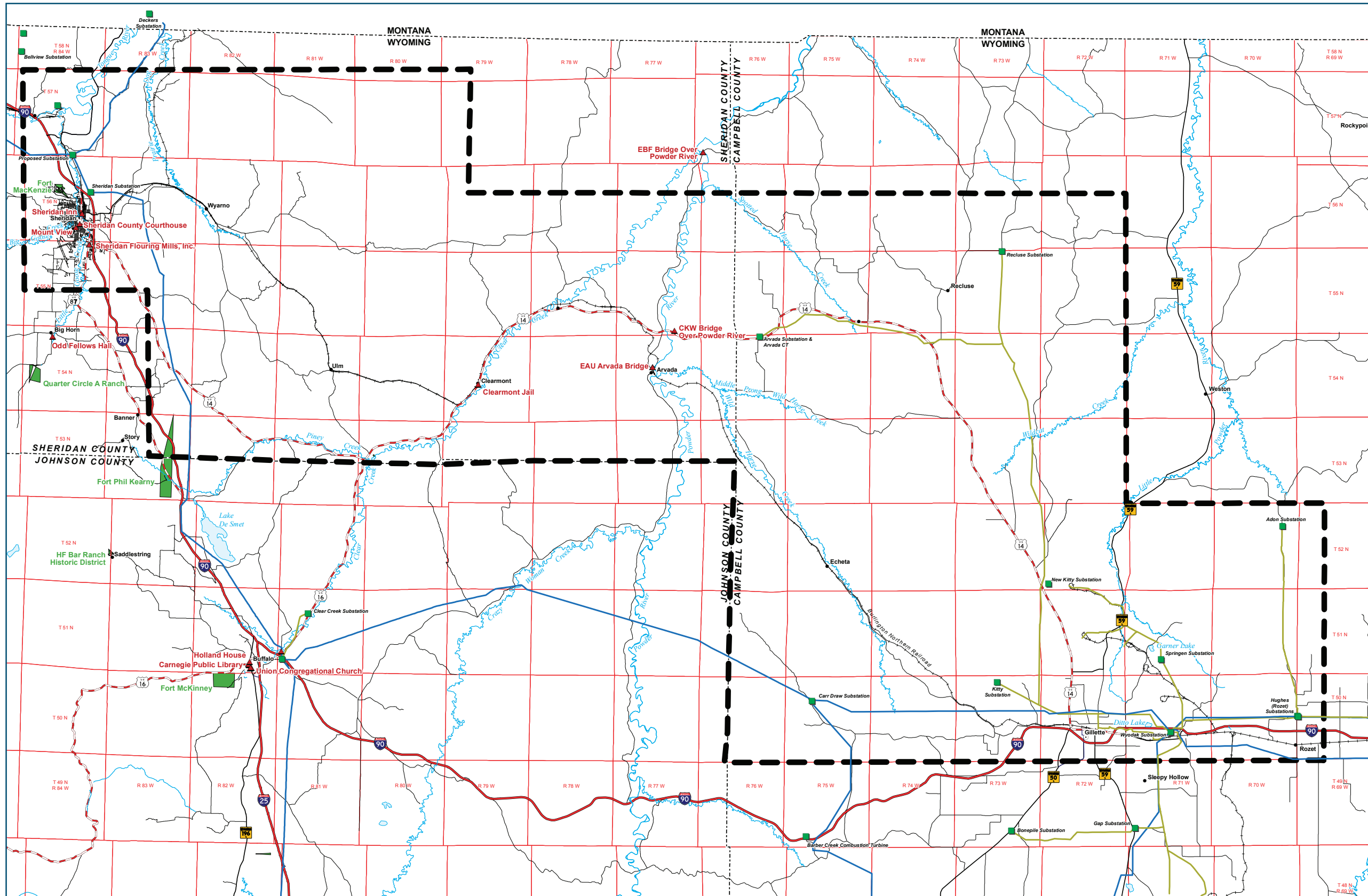


BASE DATA SOURCES:
Bureau of Transportation Statistics - Roads, Rail
BLM - Township/Range
PreCorp - Transmission Lines and Facilities
Census/USGS - Hydrology
FILE: Surface_Water.mxd
PATH: P:\2004\4\061_02\GIS\Layouts\Resource
REVISED: June 16, 2005

HUGHES TRANSMISSION PROJECT

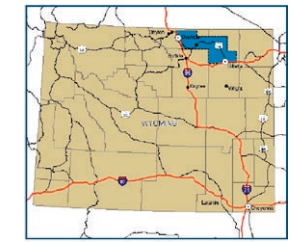


Figure 3-8 Surface Water



HISTORIC RESOURCES
National Register of Historic Places, 2003

- LEGEND**
- Project Study Area
 - Historic Resources**
 - Historic Place
 - Historic Region
 - Transmission**
 - Existing Substation
 - Existing 230kV Transmission Line
 - Existing 69kV Transmission Line



BASE DATA SOURCES:
Bureau of Transportation Statistics - Roads, Rail
BLM - Township/Range
PreCorp - Transmission Lines and Facilities
Census/USGS - Hydrology
FILE: National_Register.mxd
PATH: P:\2004\40561_02\GIS\Layouts\Resource
REVISED: June 16, 2005

HUGHES TRANSMISSION PROJECT

Figure 3-9 Historic Resources

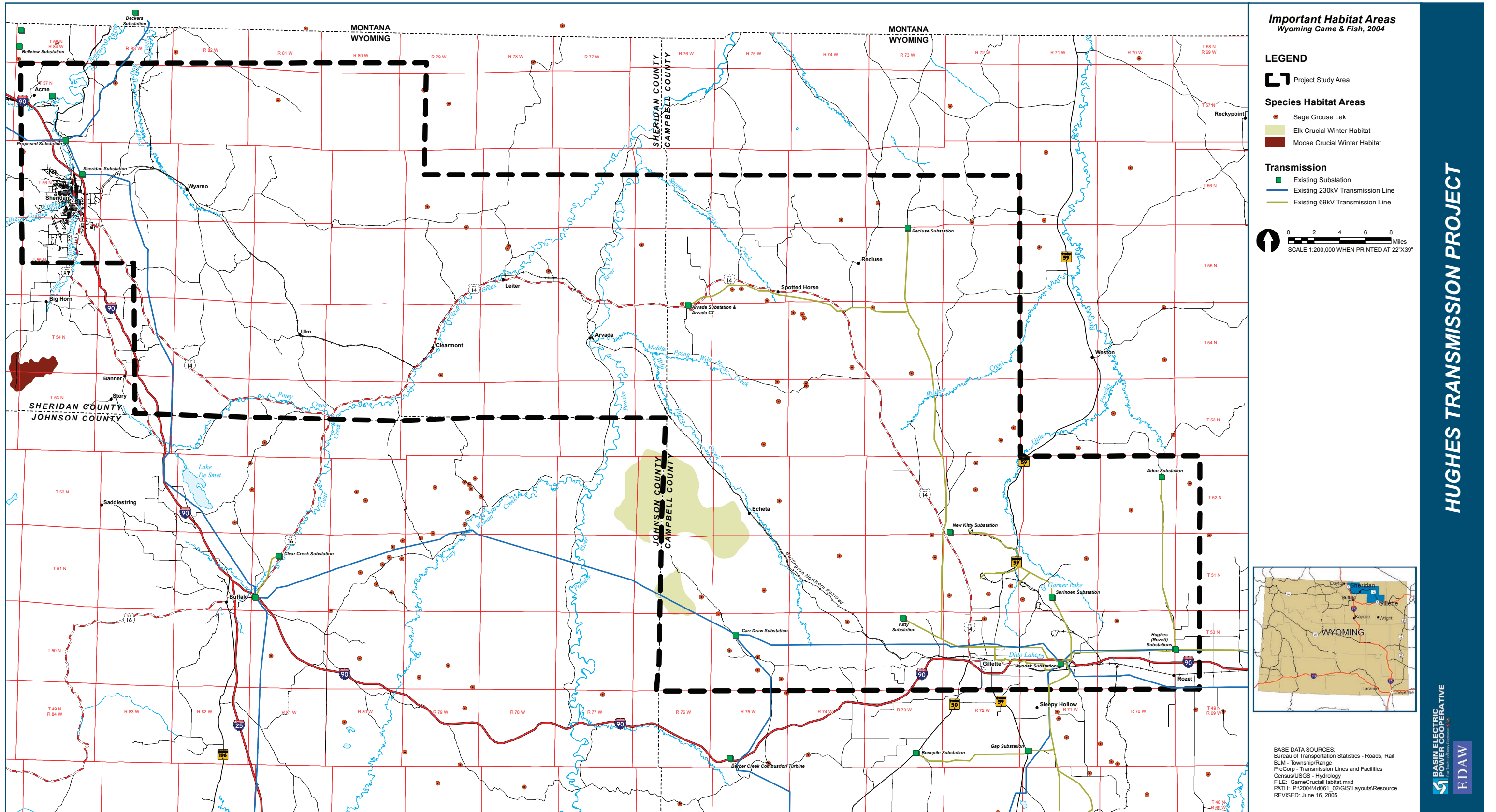
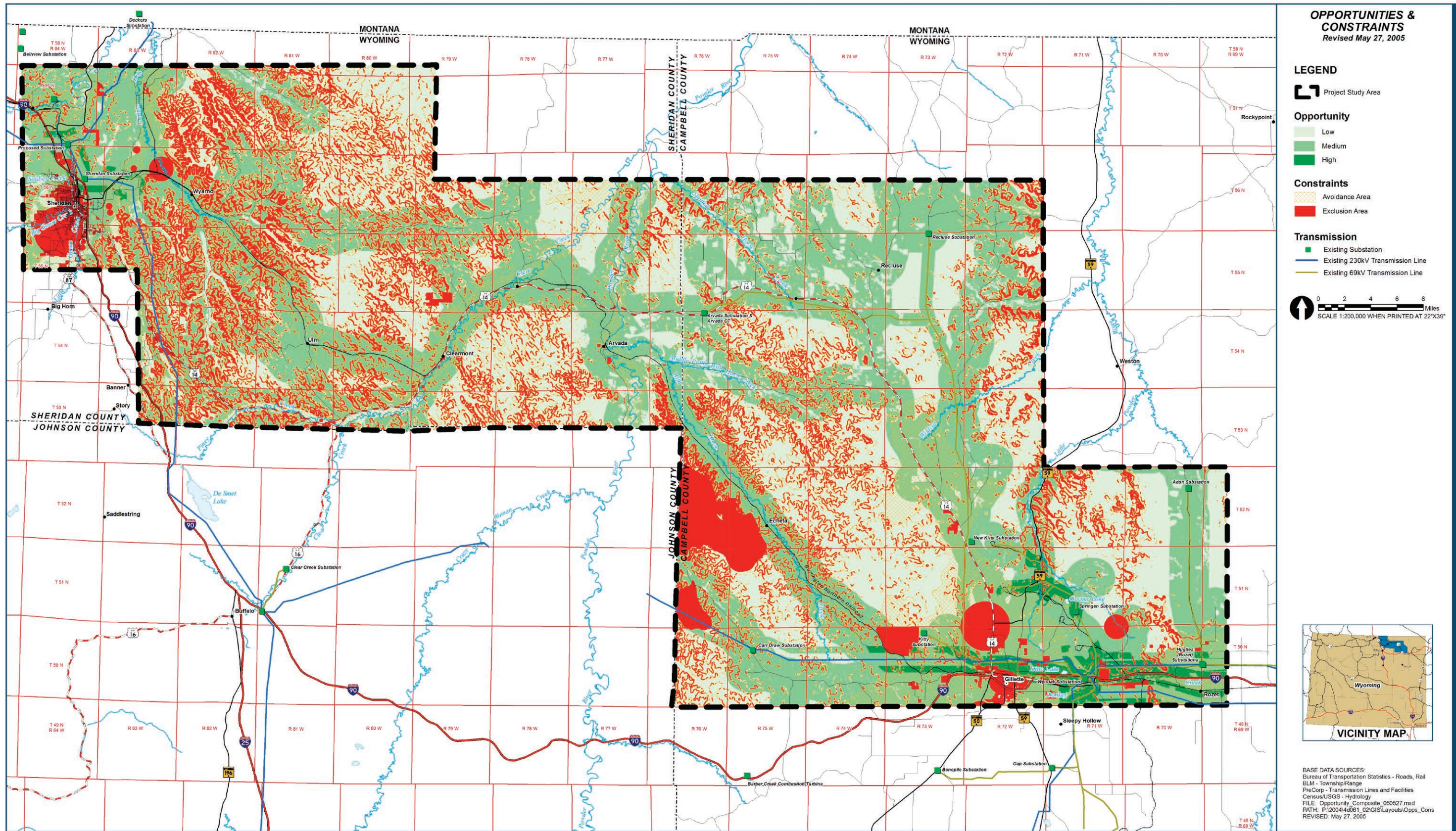


Figure 3-10 Important Habitat Areas

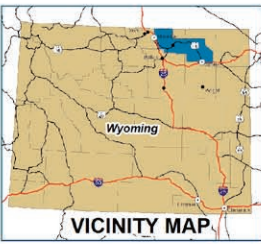


OPPORTUNITIES & CONSTRAINTS
Revised May 27, 2005

LEGEND

- Project Study Area
- Opportunity**
 - Low
 - Medium
 - High
- Constraints**
 - Avoidance Area
 - Exclusion Area
- Transmission**
 - Existing Substation
 - Existing 230kV Transmission Line
 - Existing 69kV Transmission Line

0 2 4 6 8 Miles
SCALE 1:200,000 WHEN PRINTED AT 22"x39"



BASE DATA SOURCES:
Bureau of Transportation Statistics - Roads, Rail
BLM - Township/Range
PreCorp - Transmission Lines and Facilities
Census/USGS - Hydrology
FILE: Opportunity_Composite_060527.mxd
PATH: P:\2004\4061_02\GIS\Layouts\Opps_Con
REVISED: May 27, 2005

Figure 3-11 Opportunities and Constraints Analysis

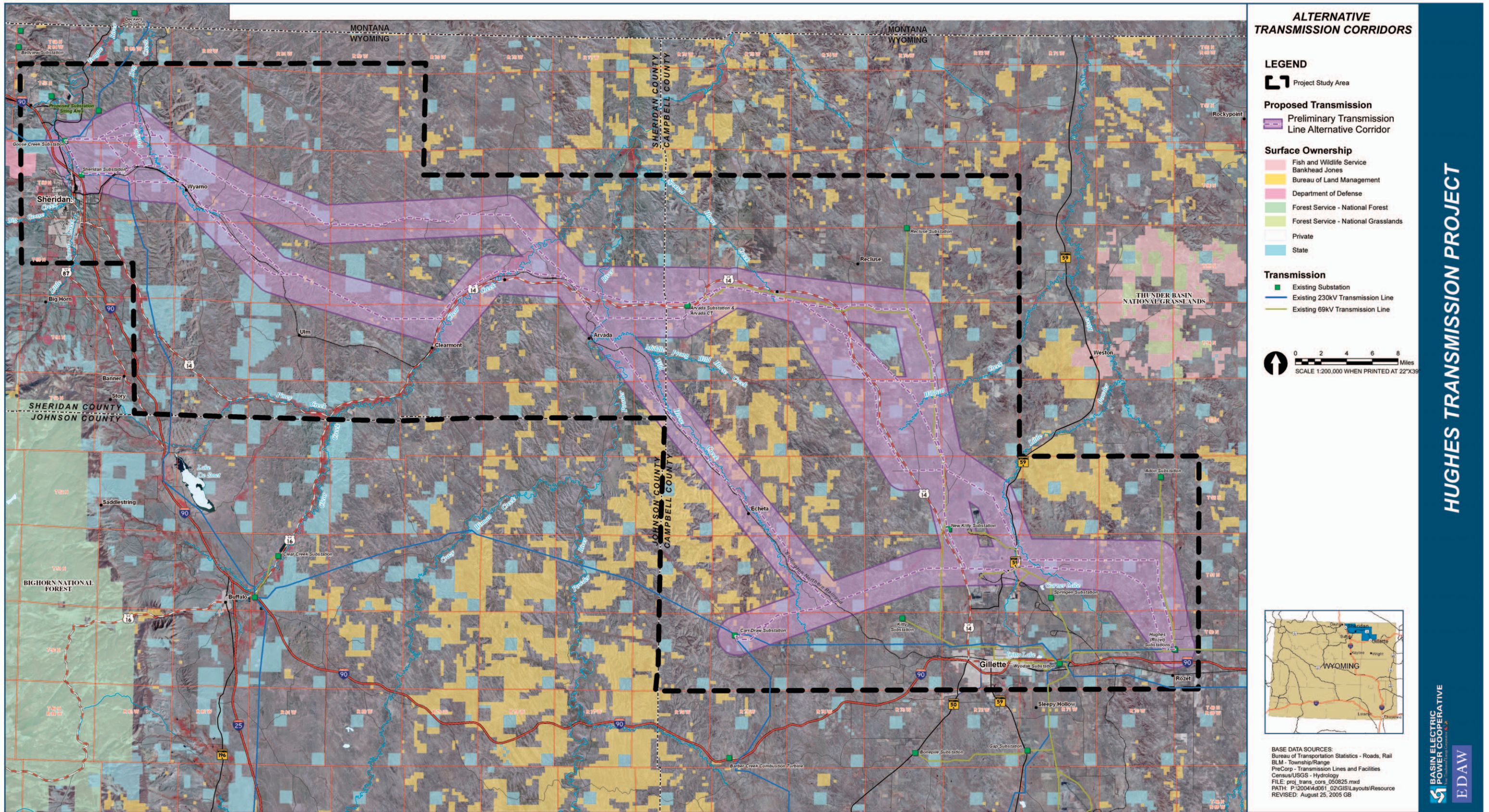


Figure 3-12
Preliminary Alternative Corridors