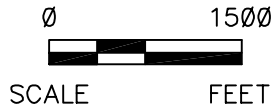
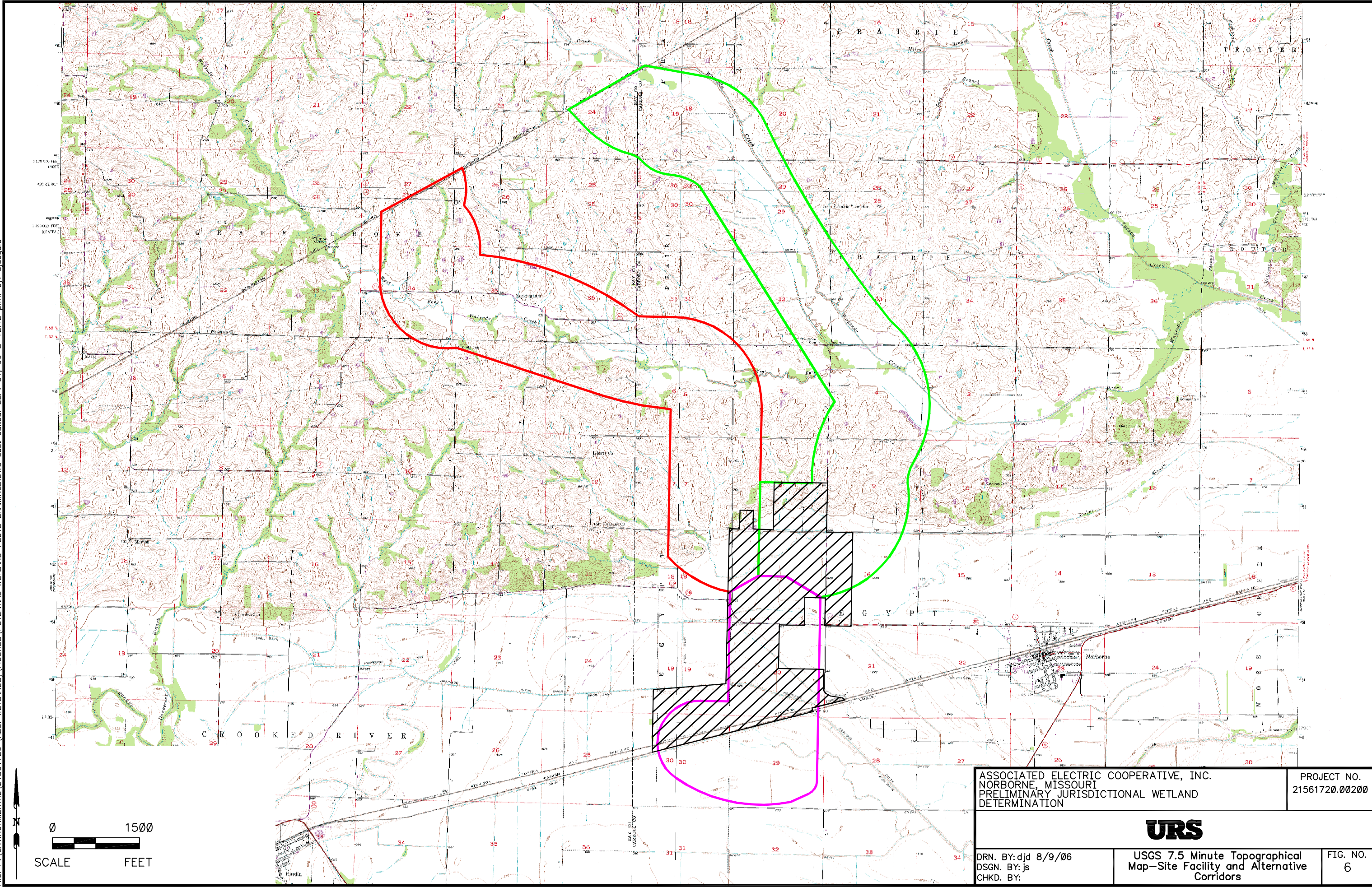


File: P:\ENVIRONMENTAL\21561720 (AECI WETLANDS)\FIGURES\POTENTIAL WETLAND PLOTS EXAMINED.DWG Last edited: SEP. 01. 06 @ 12:42 p.m. by: djdegu0



SCALE FEET

ASSOCIATED ELECTRIC COOPERATIVE, INC.
NORBORNE, MISSOURI
PRELIMINARY JURISDICTIONAL WETLAND
DETERMINATION

PROJECT NO.
21561720.00200



DRN. BY: djd 8/9/06
DSGN. BY: js
CHKD. BY:

USGS 7.5 Minute Topographical
Map—Site Facility and Alternative
Corridors

FIG. NO.
6

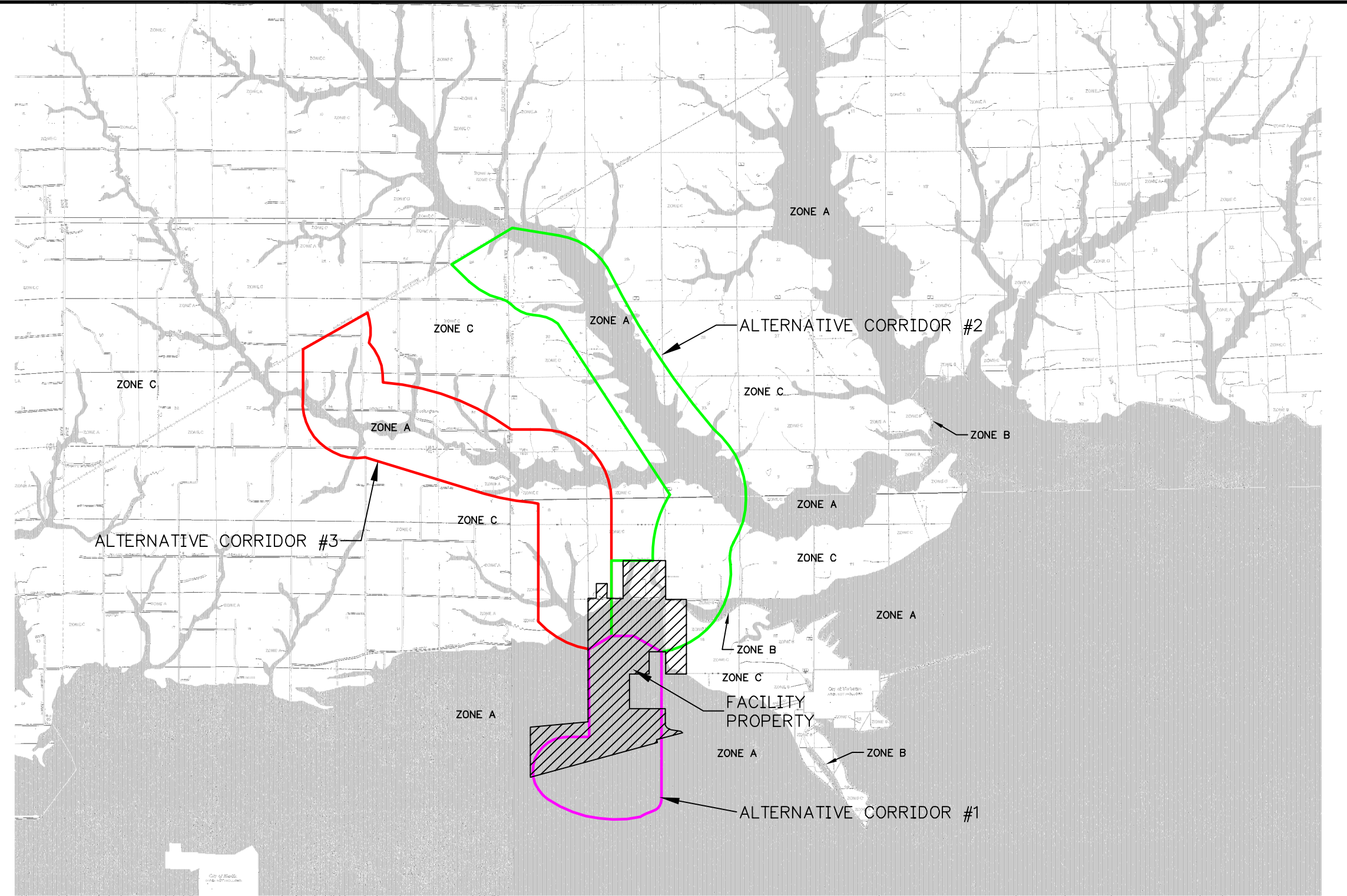
KEY TO MAP

- 500-Year Flood Boundary
- 100-Year Flood Boundary
- Zone Designations*
- 100-Year Flood Boundary
- 500-Year Flood Boundary
- Base Flood Elevation Line With Elevation in Feet** 513
- Base Flood Elevation in Feet Where Uniform Within Zone** (EL 987)
- Elevation Reference Mark RM7x
- Zone D Boundary
- River Mile *M1.5
- Approximate 100-Year Flood Boundary ZONE A

** Referenced to the National Geodetic Vertical Datum of 1929

***EXPLANATION OF ZONE DESIGNATIONS**

| ZONE | EXPLANATION |
|--------|--|
| A | Areas of 100-year flood; base flood elevations and flood hazard factors not determined. |
| A0 | Areas of 100-year shallow flooding where depths are between one (1) and three (3) feet; average depths of inundation are shown, but no flood hazard factors are determined. |
| AH | Areas of 100-year shallow flooding where depths are between one (1) and three (3) feet; base flood elevations are shown, but no flood hazard factors are determined. |
| A1-A30 | Areas of 100-year flood; base flood elevations and flood hazard factors determined. |
| A99 | Areas of 100-year flood to be protected by flood protection system under construction; base flood elevations and flood hazard factors not determined. |
| B | Areas between limits of the 100-year flood and 500-year flood; or certain areas subject to 100-year flooding with average depths less than one (1) foot or where the contributing drainage area is less than one square mile; or areas protected by levees from the base flood. (Medium shading) |
| C | Areas of minimal flooding. (No shading) |
| D | Areas of undetermined, but possible, flood hazards. |
| V | Areas of 100-year coastal flood with velocity (wave action); base flood elevations and flood hazard factors not determined. |
| V1-V30 | Areas of 100-year coastal flood with velocity (wave action); base flood elevations and flood hazard factors determined. |



INFORMATION OBTAINED FROM FOLLOWING SOURCE:
 FEDERAL EMERGENCY MANAGEMENT AGENCY, FLOOD INSURANCE RATE MAP

- CARROLL COUNTY, MISSOURI, PANEL 100 OF 225, COMMUNITY-PANEL NUMBER 290057 0100 B, EFFECTIVE DATE 10-17-96
- CARROLL COUNTY, MISSOURI, PANEL 175 OF 225, COMMUNITY-PANEL NUMBER 290057 0175 B, EFFECTIVE DATE 10-17-96
- RAY COUNTY, MISSOURI, PANEL 50 OF 150, COMMUNITY-PANEL NUMBER 290778 0050 B, EFFECTIVE DATE 01-19-83
- RAY COUNTY, MISSOURI, PANEL 100 OF 150, COMMUNITY-PANEL NUMBER 290778 0100 B, EFFECTIVE DATE 01-19-83

APPROXIMATE SCALE 1"=2000'

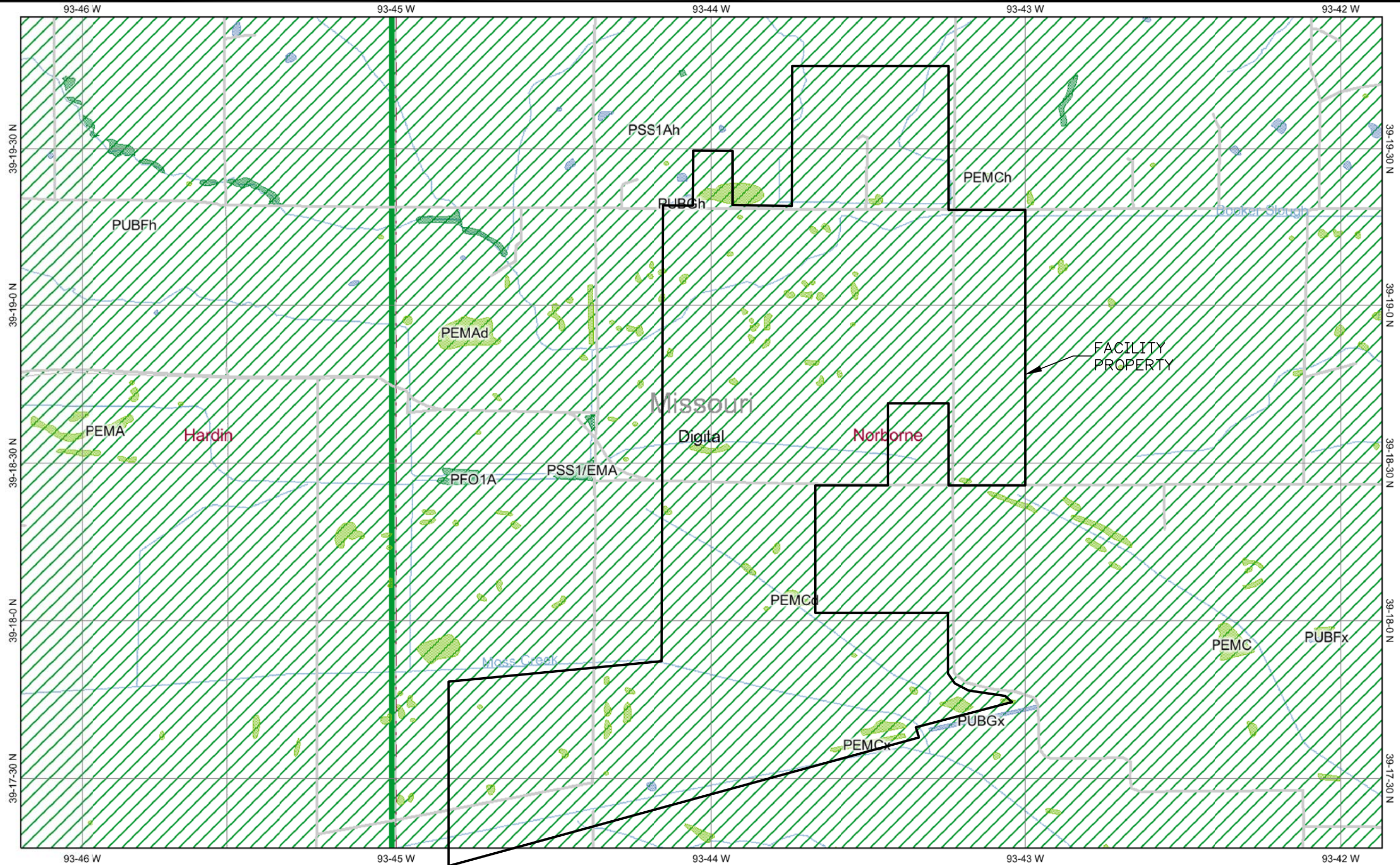
| | |
|---|--|
| ASSOCIATED ELECTRIC COOPERATIVE, INC. NORBORNE, MISSOURI PRELIMINARY JURISDICTIONAL WETLAND DETERMINATION | PROJECT NO. 21561720.00200 |
| | |
| DRN. BY: djd 8/9/06 DSGN. BY: js CHKD. BY: | FEMA FLOOD INSURANCE RATE MAPS - FACILITY PROPERTY AND ALTERNATIVE CORRIDORS |
| FIG. NO. 7 | |

File: P:\ENVIRONMENTAL\21561720 (AEC WETLANDS)\FIGURES\FACILITY PROPERTY & ALTERNATIVE CORRIDORS MAP.DWG Last edited: SEP. 01. 06 @ 12:58 p.m. by: djfleguid



Legend

- Interstate
- Major Roads
- Other Road
- Interstate
- State highway
- US highway
- Roads
- Cities
- USGS Quad Index 24K
- Lower 48 Wetland Polygons**
- Estuarine and Marine Deepwater
- Estuarine and Marine Wetland
- Freshwater Emergent Wetland
- Freshwater Forested/Shrub Wetland
- Freshwater Pond
- Lake
- Other
- Riverine
- Metadata**
- Non-Digital
- Digital
- Scan
- Lower 48 Available Wetland Data**
- Non-Digital
- Digital
- No Data
- Scan
- NHD Streams
- Counties 100K
- Urban Areas 300K
- States 100K
- South America
- North America



File: P:\ENVIRONMENTAL\21561720 (AEC) WETLANDS\FIGURES\FACILITY PROPERTY MAP.DWG Last edited: SEP. 01. 06 @ 1:08 p.m. by: djdeguid

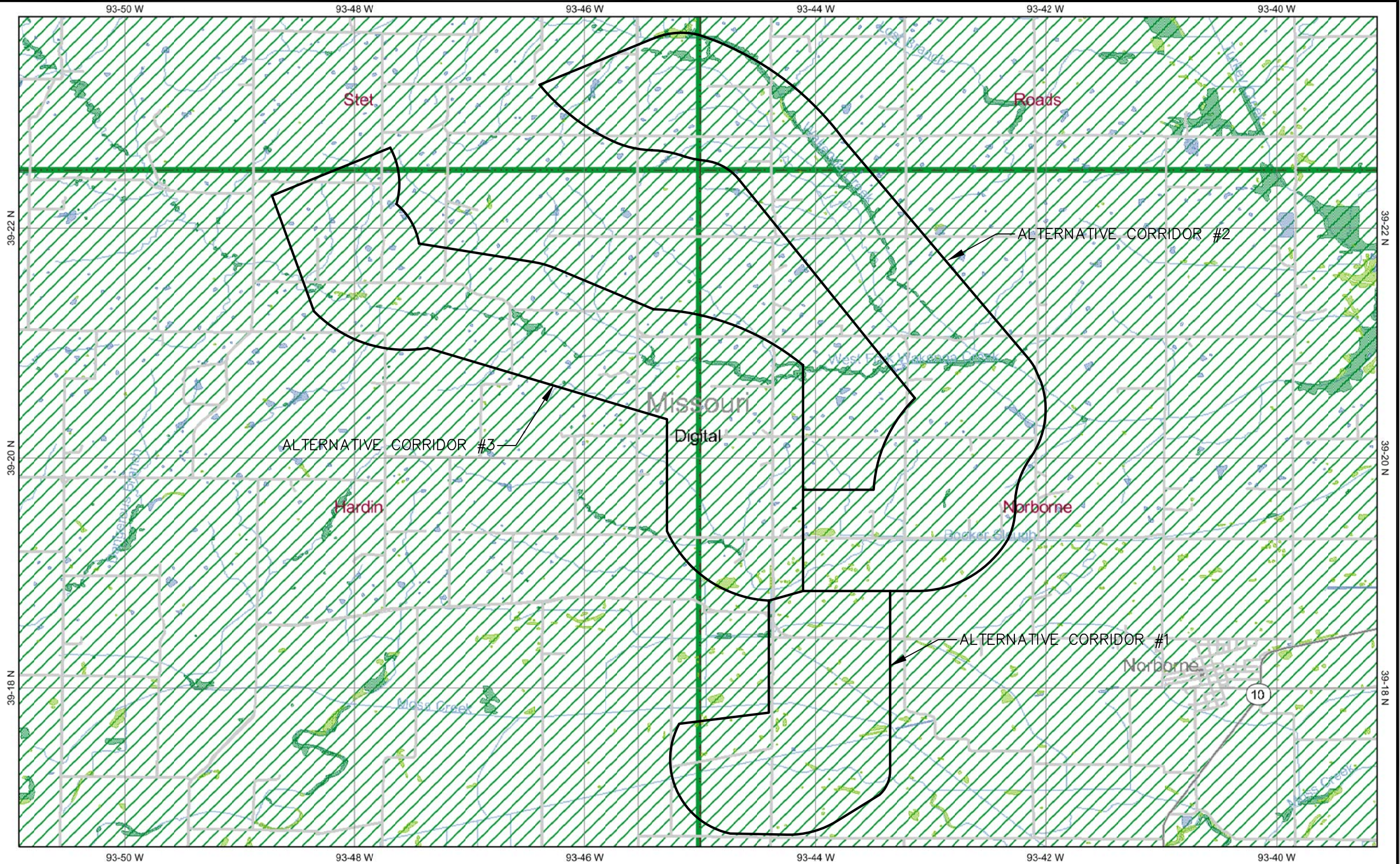


| | | |
|--|--|-------------------------------|
| ASSOCIATED ELECTRIC COOPERATIVE, INC. NORBORNE, MISSOURI PRELIMINARY JURISDICTIONAL WETLAND DETERMINATION | | PROJECT NO. 21561720.00200 |
| URS | | |
| DRN. BY: djd 8/9/06 DSGN. BY: js CHKD. BY: | USFWS NATIONAL WETLAND INVENTORY MAP – FACILITY PROPERTY | FIG. NO. 8 |



Legend

- Interstate
- Major Roads
- Other Road
- Interstate
- State highway
- US highway
- Roads
- Cities
- USGS Quad Index 24K
- Lower 48 Wetland Polygons**
- Estuarine and Marine Deepwater
- Estuarine and Marine Wetland
- Freshwater Emergent Wetland
- Freshwater Forested/Shrub Wetland
- Freshwater Pond
- Lake
- Other
- Riverine
- Metadata**
- Non-Digital
- Digital
- Scan
- Lower 48 Available Wetland Data**
- Non-Digital
- Digital
- No Data
- Scan
- NHD Streams
- Counties 100K
- Urban Areas 300K
- States 100K
- South America
- North America

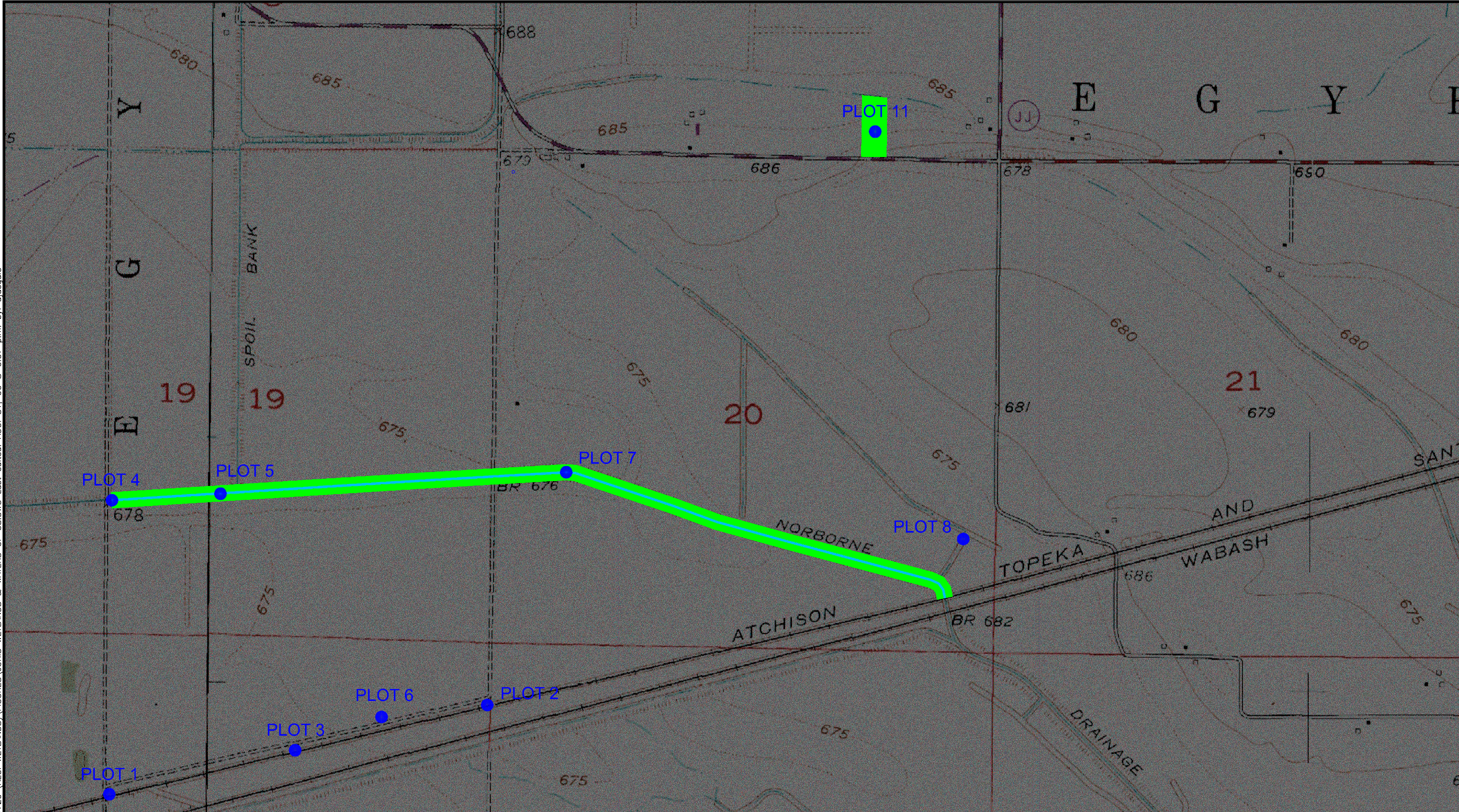


File: P:\ENVIRONMENTAL\21561720 (AECI WETLANDS)\FIGURES\CORRIDORS MAP.DWG Last edited: AUG. 31. 06 @ 5:18 p.m. by: chammhd

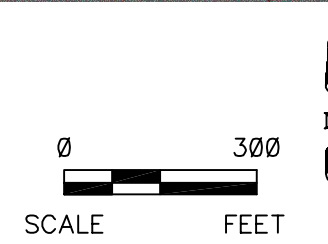


| | | |
|---|--|-------------------------------|
| ASSOCIATED ELECTRIC COOPERATIVE, INC. NORBORNE, MISSOURI PRELIMINARY JURISDICTIONAL WETLAND DETERMINATION | | PROJECT NO. 21561720.00200 |
| URS | | |
| DRN. BY: djd 8/9/06 DSGN. BY: js CHKD. BY: | USFWS NATIONAL WETLAND INVENTORY MAP – ALTERNATIVE CORRIDORS | FIG. NO. 9 |

File: P:\ENVIRONMENTAL\21561720 (AECI WETLANDS)\FIGURES\JURIS WETLANDS & WATERS OF US.DWG Last edited: AUG. 31, 06 @ 6:07 p.m. by: dfdequid



- LINEAR WATERS OF THE UNITED STATES
- JURISDICTIONAL WETLANDS



| | | |
|--|--|-------------------------------|
| ASSOCIATED ELECTRIC COOPERATIVE, INC. NORBORNE, MISSOURI PRELIMINARY JURISDICTIONAL WETLAND DETERMINATION | | PROJECT NO. 21561720.00200 |
| | | FIG. NO. 10 |
| DRN. BY: djd 8/9/06 DSGN. BY: js CHKD. BY: | JURISDICTIONAL WETLANDS AND WATERS OF THE UNITED STATES | |