



PNNL's Capability Replacement Laboratory Project

PNNL's Capability Replacement Laboratory: *A two-phase process*

Build adequate replacement space to retain mission-critical capabilities



Transition from the 300 Area of the nearby Hanford Site



Cleanup of the 300 Area is Complex

- ▶ 700,000 square feet—one-third of total campus footprint
- ▶ Nearly 50% of experimental laboratory space
- ▶ 75% of federally-owned facilities
- ▶ 100% of nuclear and radiological facilities
- ▶ \$200 million R&D budget
- ▶ Nearly 1,000 employees
- ▶ Vital national security, homeland security and science missions



Hanford 300 Area PNNL Research Facilities



Radiation Detection /
Materials S&T

3730, 323

326

Hazard CAT 2
Chemistry /
Processing,
Subsurface Science
Materials S&T

Radiation
Detection /Chem
Processing

Classified
Computing

3760

329

325

336

338

Ultra-Trace
Detection

320

318

Certification
Lab /
Dosimetry

Systems Biology /
Environmental
Science / Actinide
Chem / NMR /
Detection

331 Complex

300 Area

DOE (EM)

DOE (SC)

(Horn Rapids Triangle)

EMSL

Leased Facilities on Battelle Land

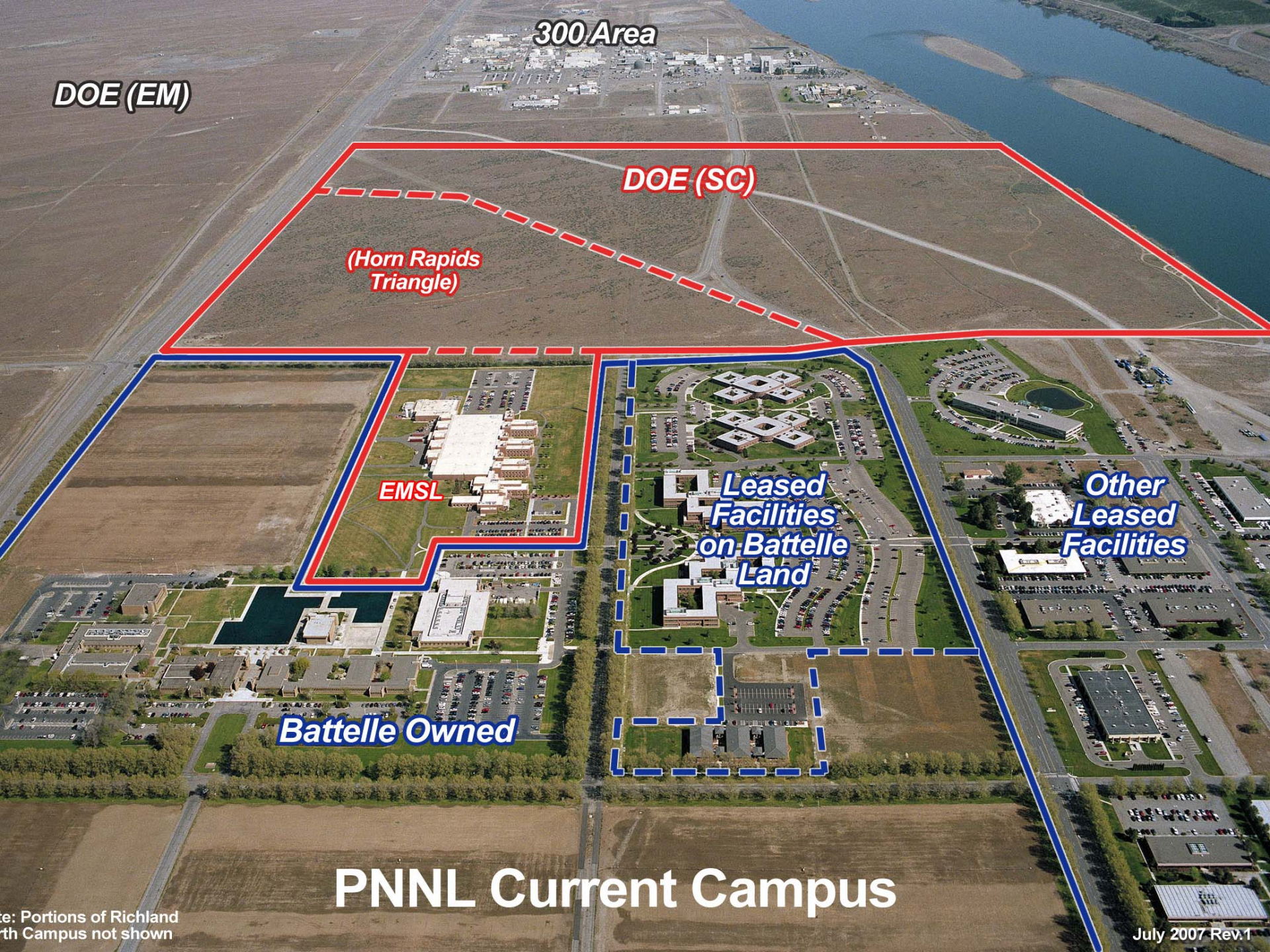
Other Leased Facilities

Battelle Owned

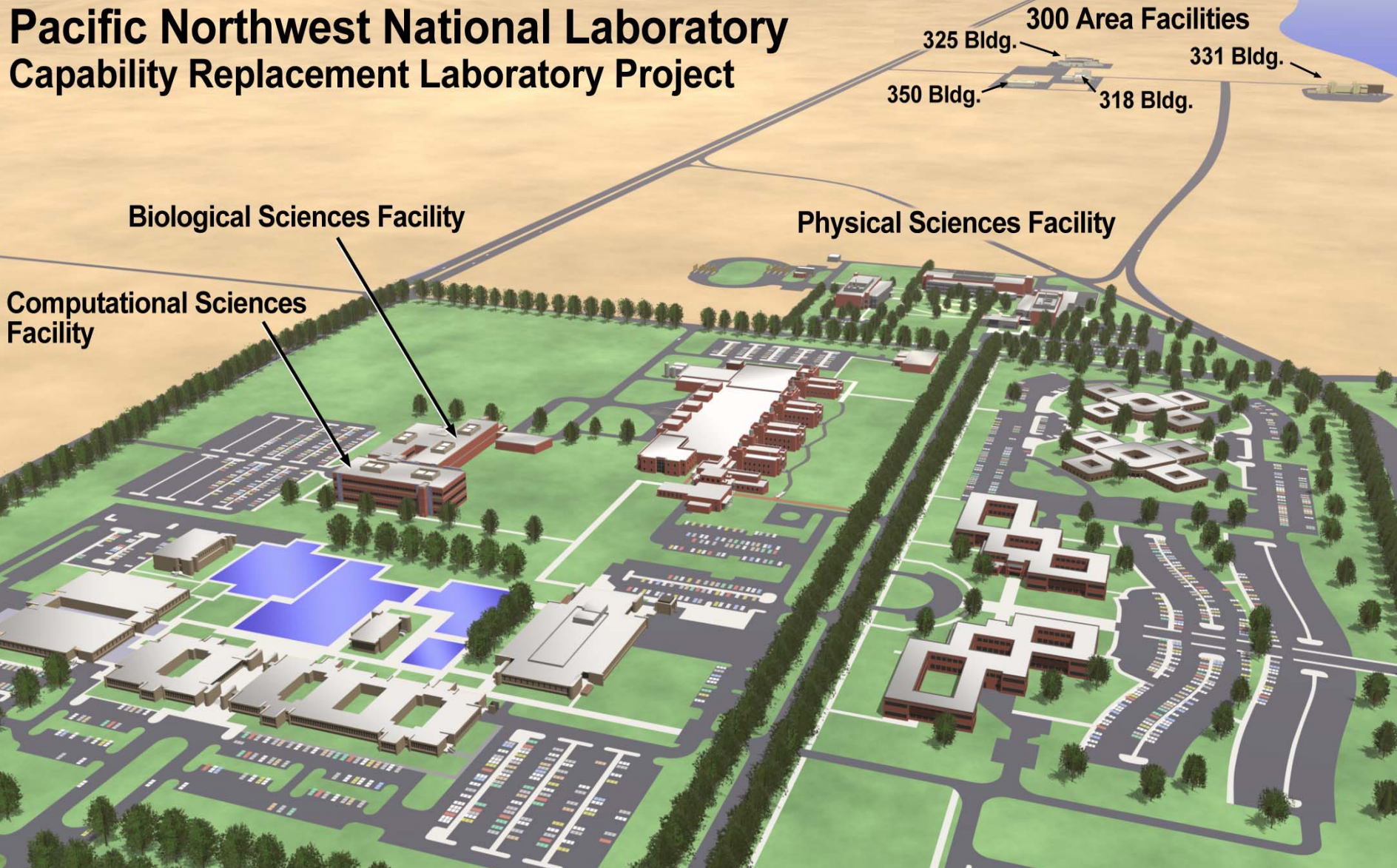
PNNL Current Campus

Portions of Richland North Campus not shown

July 2007 Rev. 1



Pacific Northwest National Laboratory Capability Replacement Laboratory Project



Biological Sciences Facility

Computational Sciences Facility

Physical Sciences Facility

300 Area Facilities
325 Bldg. 318 Bldg. 331 Bldg.
350 Bldg.

PNNL's Number One Priority

CRL Project Team

Project Director - Jim McClusky
Deputy Director - Dale Knutson

Jim Fulton
PM/Business Systems

Jim Smith
Quality Assurance

Hans Vogel¹
ES&H

Gary McAtee¹ - Contracts
Kevin Adamson¹ - Finance

Joy Rosscup⁴
Project Operations

Walt Laity¹
R&D Liaison

Craig Mac Donald
Transition PM

Greg Herman²
Third Party PM

Jeff Pittman
HRT New Construction PM

Skip Kerschner
325 Building PM

Staffing Legend

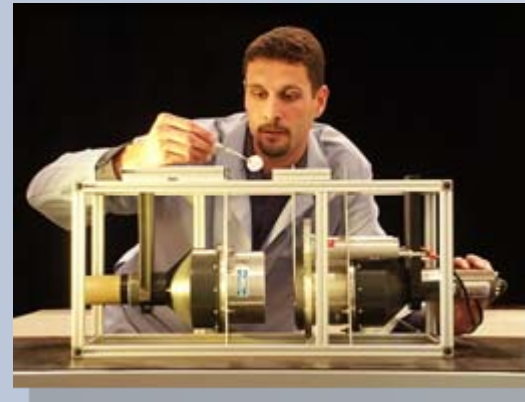
- 1) Matrixed full-time
- 2) Dual project role
- 3) Contract hire
- 4) Matrix part-time

Revised April 30, 2007

Capability Replacement Laboratory Scope

Federally Funded \$224 Million Line-Item Portion

- **Physical Sciences Facility:**
 - Ultra-trace
 - Radiation Detection
 - Materials Science & Technology
 - Chemistry and Processing
- **Building 325:**
 - Shielded Operations
 - Radiation Detection
 - Materials Science & Technology
 - Chemistry and Processing



Capability Replacement Laboratory Scope

Mixed-Funding Portion

- **Biological Sciences Facility:**
 - Systems Biology
- **Computational Sciences Facility:**
 - Information Analytics
- **Building 318:**
 - Certification & Dosimetry
- **Building 331:**
 - Subsurface Science
 - Environmental Biomarkers
- **Building 350:**
 - Support Services Shop



PNNL has been vacating the 300 Area for several years

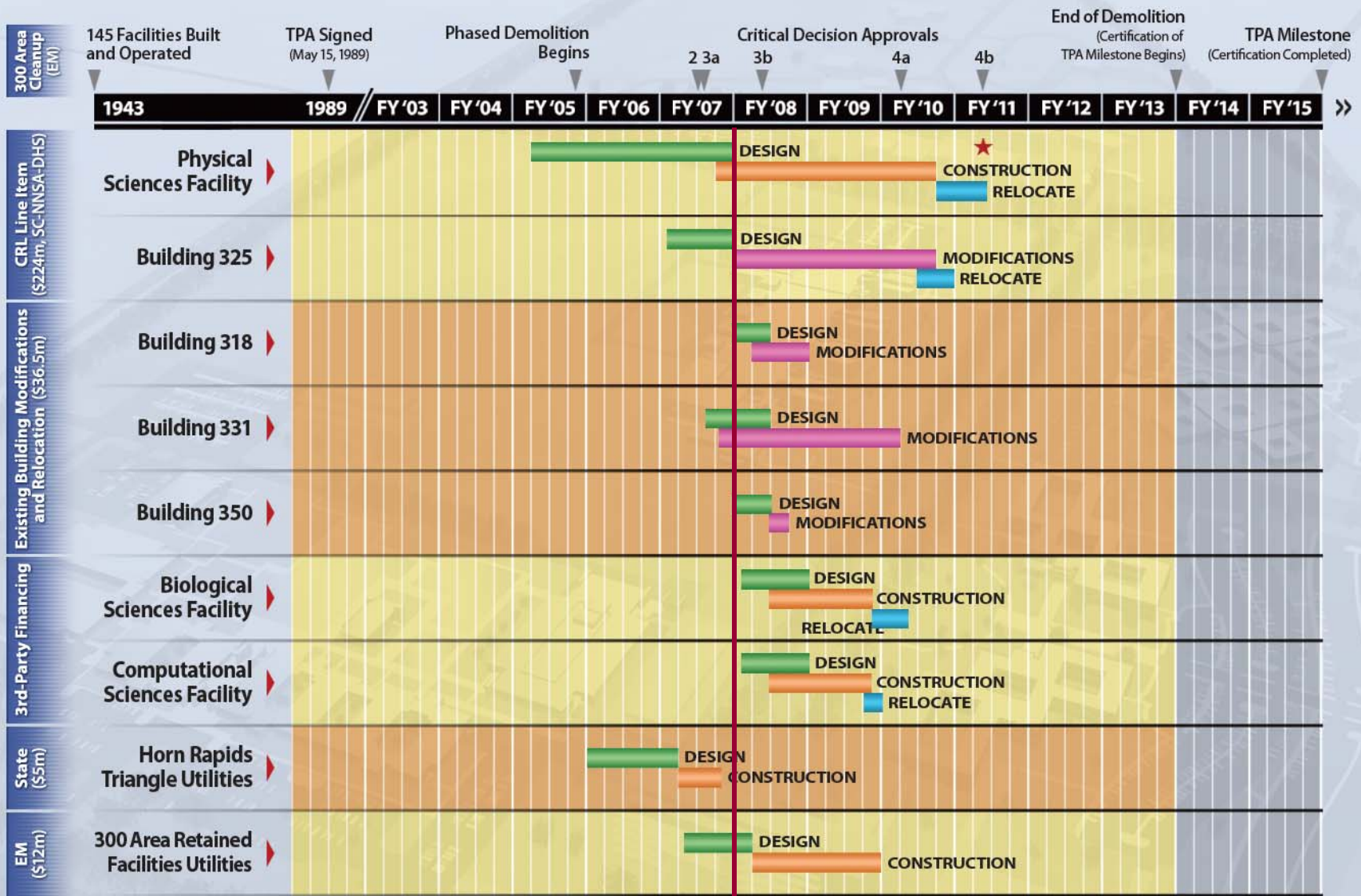
PNNL's 300 Area Transition Efforts

- ▶ Washington Closure Hanford, cleanup contractor, on schedule—moving closer to PNNL-occupied buildings
- ▶ Hard lift for PNNL over the next few years
 - Possible interim staff moves



300 Area Replacement Facilities Chronology

Construction, Modification, Replacement & Disposition



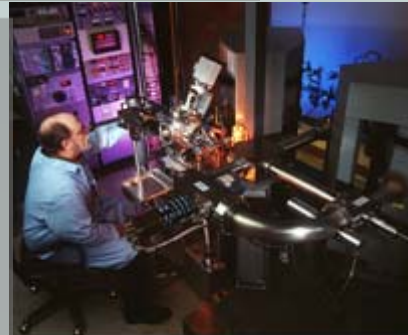
Data Date

★ Deputy Secretary Approval (Project Completion)

Physical Sciences Facility Federally Funded



- ▶ Ultra-trace
- ▶ Materials Science and Technology
- ▶ Rad Detection
- ▶ Chemistry & Processing



Break Ground in FY07

PSF Status/Highlights

► Construction

- Site work construction package awarded
- 6 contractors bid
- City's utility infrastructure project underway – sewer, communications, water and power lines installed



Physical Sciences Facility – Project Budget Profile

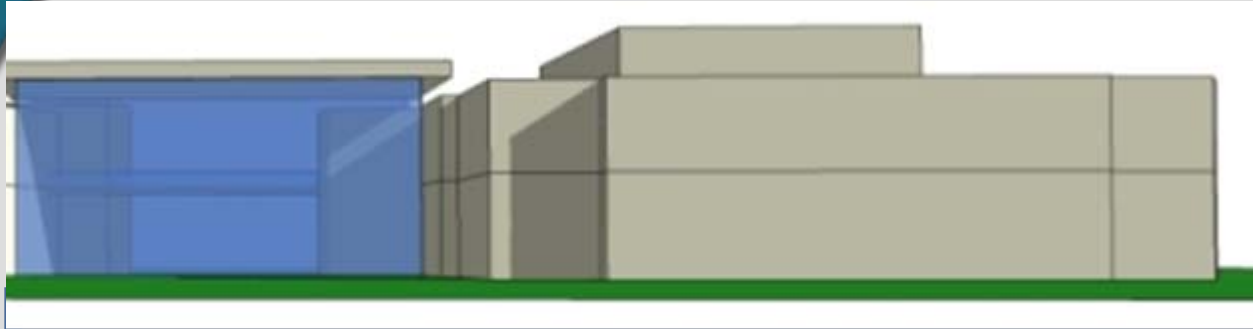
Total Project Cost - \$224.0M

		Project Level Budget Authority/Budget Obligation								
		FY 2004	FY 2005	FY 2006	FY 2007	FY 2008	FY 2009	FY 2010	FY 2011	Total
Budget Authority	TEC	0.986	6.960	17.820	19.920	58.834	77.211	19.138	9.005	209.874
	OPC	0.850	5.000	0.000	0.000	1.545	4.257	2.464	0.011	14.127
	TPC	1.836	11.960	17.820	19.920	60.379	81.468	21.602	9.016	224.000
Budget Obligation <i>Includes Contingency</i>	TPC	0.000	3.433	7.587	26.943	73.952	66.192	36.878	9.016	224.000



Computational Sciences Facility, Lease

Size: 75,600 square feet



Facility Overview

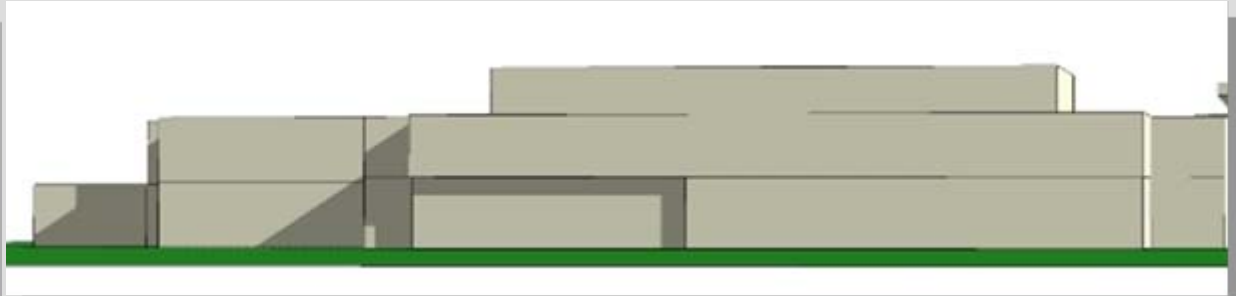
- ▶ 180 Staff
- ▶ Information Analytics Capability
- ▶ Computer Laboratories
- ▶ Electronic/Instrumentation Laboratories
- ▶ Offices



Break Ground in 2008

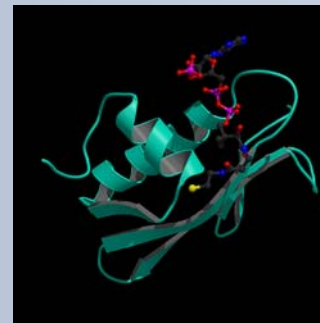
Biological Sciences Facility, Lease

Size: 73,100 square feet



Facility Overview

- ▶ 130 Staff
- ▶ Biological Laboratories
- ▶ Nuclear Magnetic Resonance Laboratories
- ▶ Laboratory Support Space
- ▶ Offices



Break Ground in 2008

Bioproducts, Sciences, and Engineering Laboratory, Lease



- ▶ \$24.75 million facility at WSU-TC
- ▶ \$14 million Washington State, \$10 million PNNL lease, \$750,000 design
- ▶ Biology and Chemistry Laboratories
- ▶ Bio-refinery High bay
- ▶ Teaching Laboratories
- ▶ Classrooms
- ▶ Startup February 2008



Size: 57,000 square feet,
31,000 square feet for PNNL

Questions?



www.pnl.gov/rcf