

Figure 1. Comparison between fish ticket-adjusted and observed-estimated landings for 16 species.

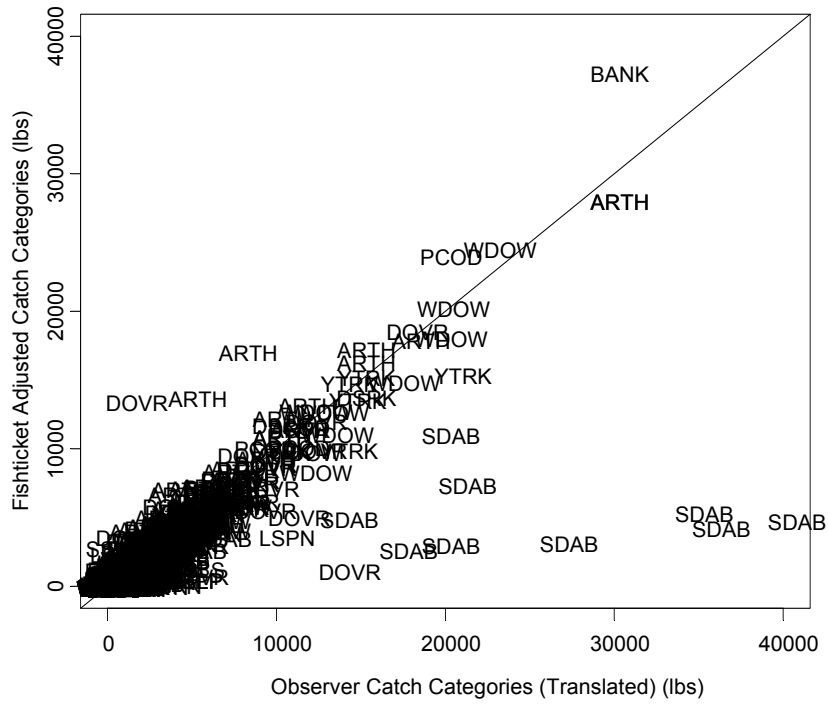


Figure 2. Observer versus fishticket adjusted landings for all species/catch categories, by tow, for the 2001-2002 Observer data.

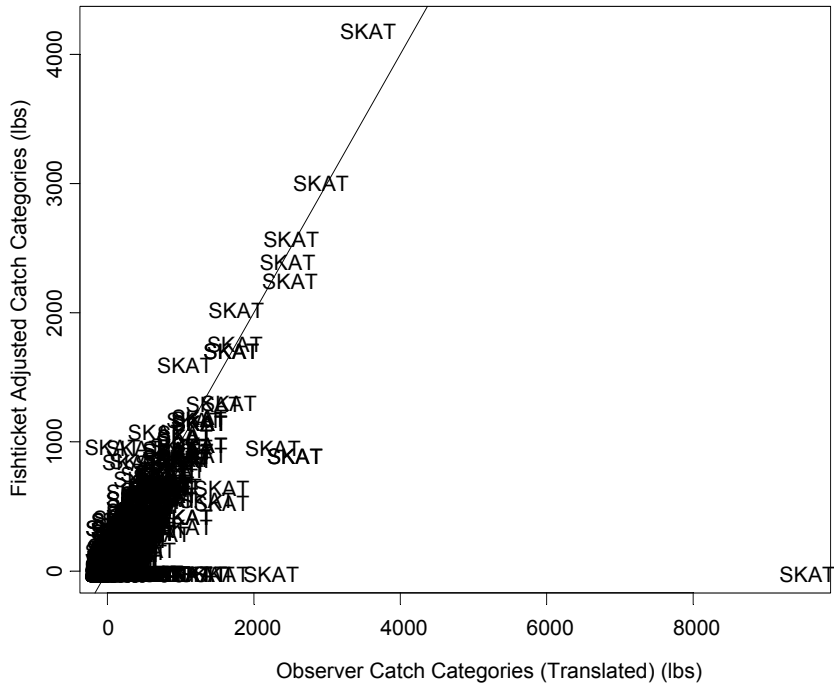


Figure 3. Observer versus fish ticket adjusted landings for skates, by tow, for the 2001-2002 Observer data.

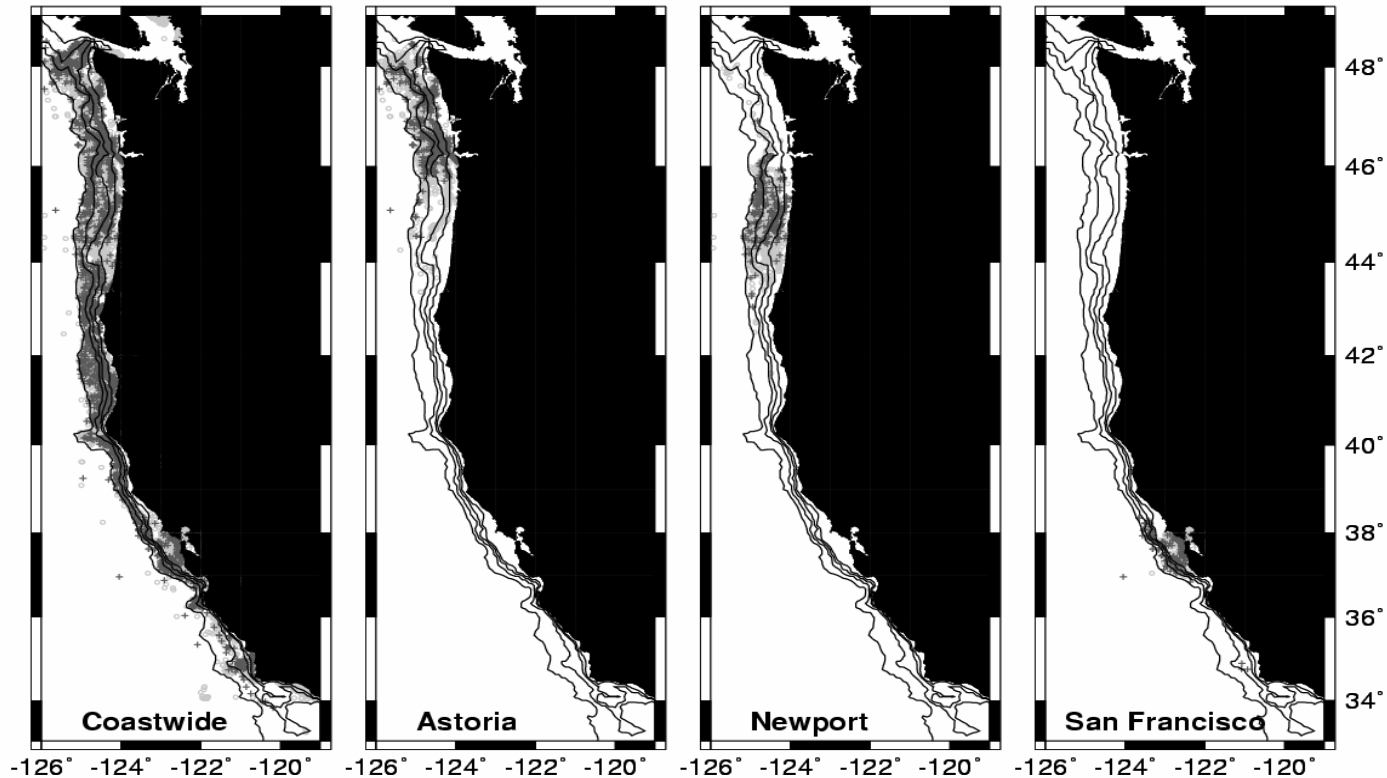


Figure 4. Tow locations of 2001 trawl logbook (open gray circles) and of observer data collected in the period from September 2001 to August 2002 (+) for all coastwide ports, Astoria area ports, Newport area ports, and San Francisco area ports. The negative values on the x-axis denote western longitude, the y-axis is northern latitude. Also, shown in the figure are 50, 100, 250, and 700 FM depth contours.

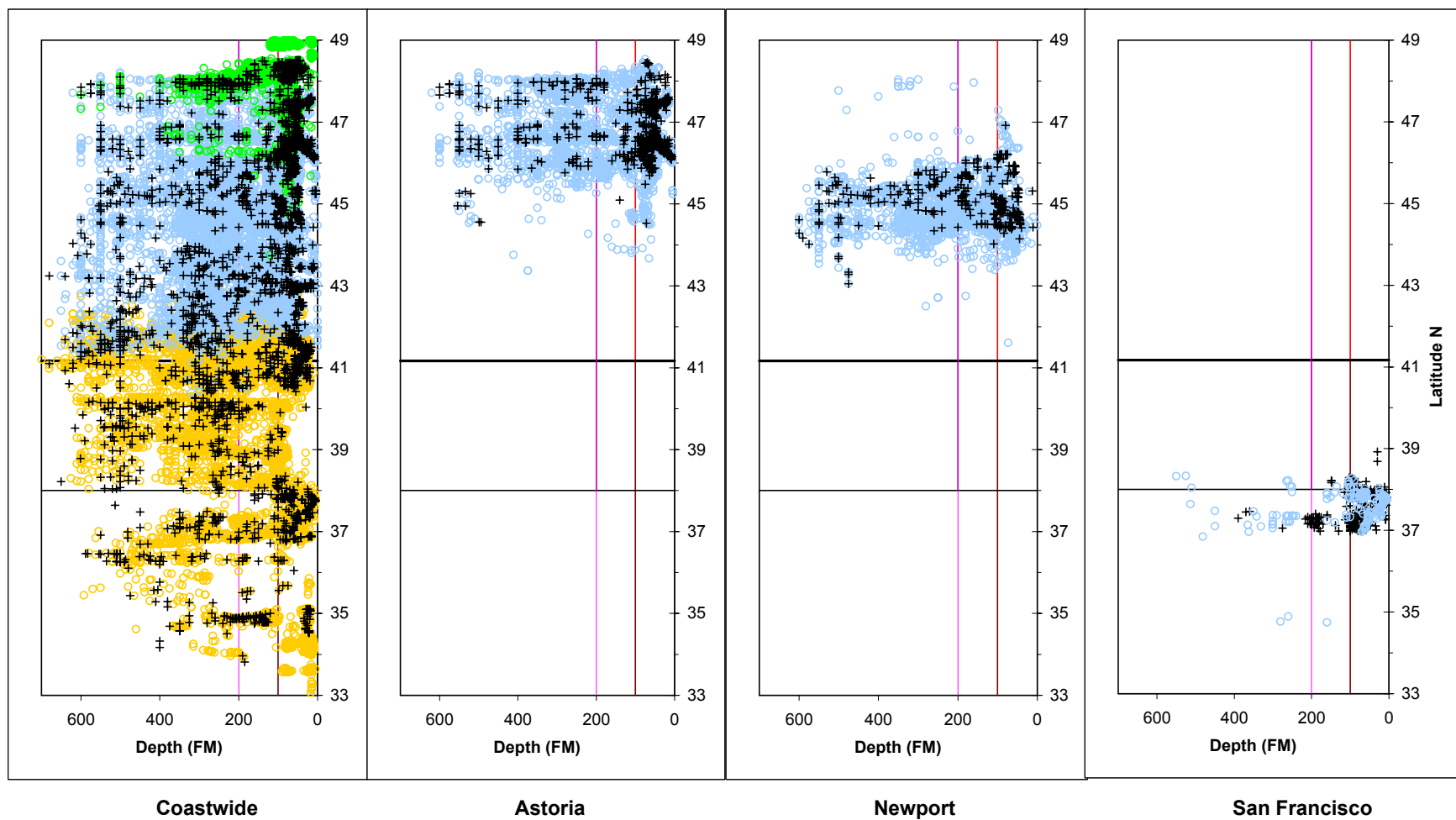


Figure 5. Tow distribution in depth and latitude for 2001 trawl logbook (+) and observer data collected in the period from September 2001 to August 2002 (open grey circles) for all ports (coastwide), Astoria area ports, Newport area ports, and San Francisco area ports.

