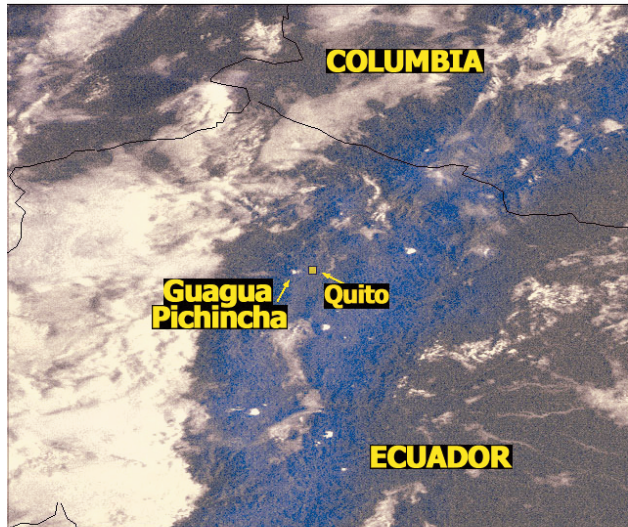
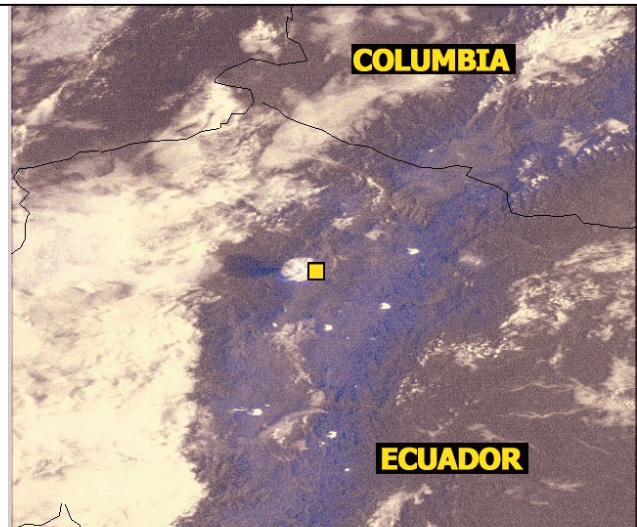


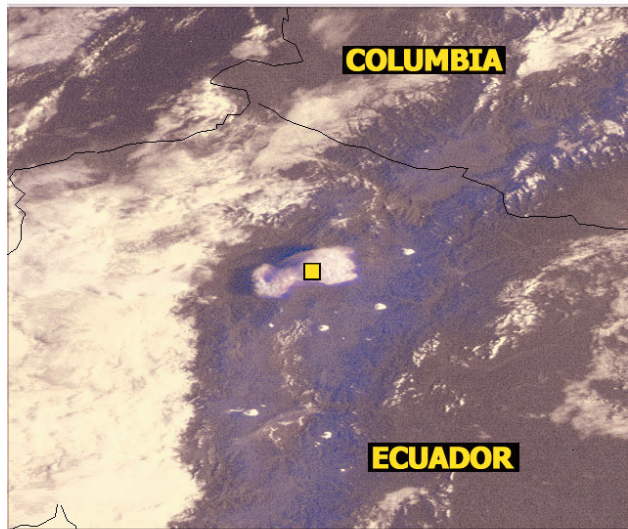
National Oceanic and Atmospheric Administration National Environmental Satellite, Data, and Information Service



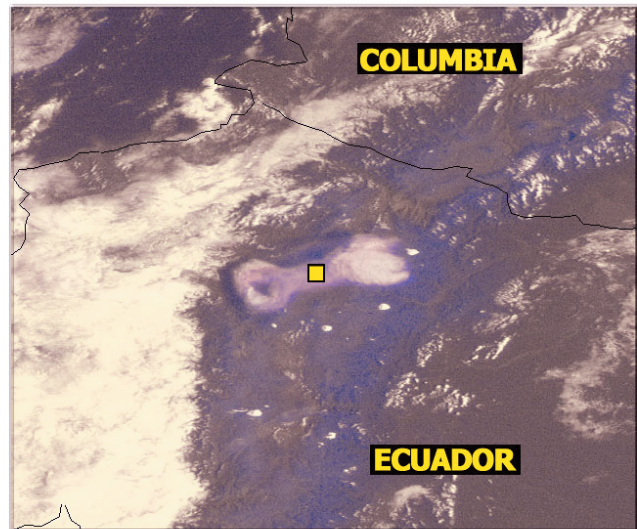
11:45 UTC



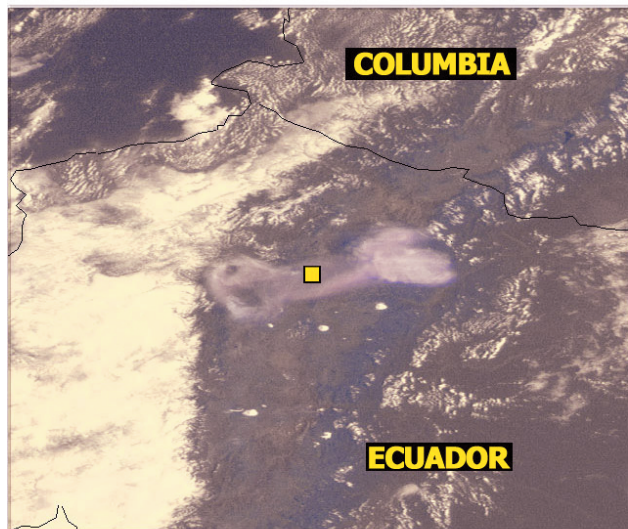
12:15 UTC



12:45 UTC



13:15 UTC



13:45 UTC

Eruption of the Guagua Pichincha Volcano Northern Ecuador October 7, 1999

Ash from an eruption of Guagua Pichincha Volcano in Ecuador at about 8:00 AM local time is seen as a gray cloud drifting west at lower altitudes and east at higher altitudes in response to winds of differing directions. The higher ash drifts over the city of Quito, marked by yellow square.

The five images were taken by GOES-8, a NOAA Geostationary Operational Environmental Satellite, at 15 minute intervals starting at 7:45 AM.

