



All-American Canal Lining Project

**Presentation To:
USIBWC**

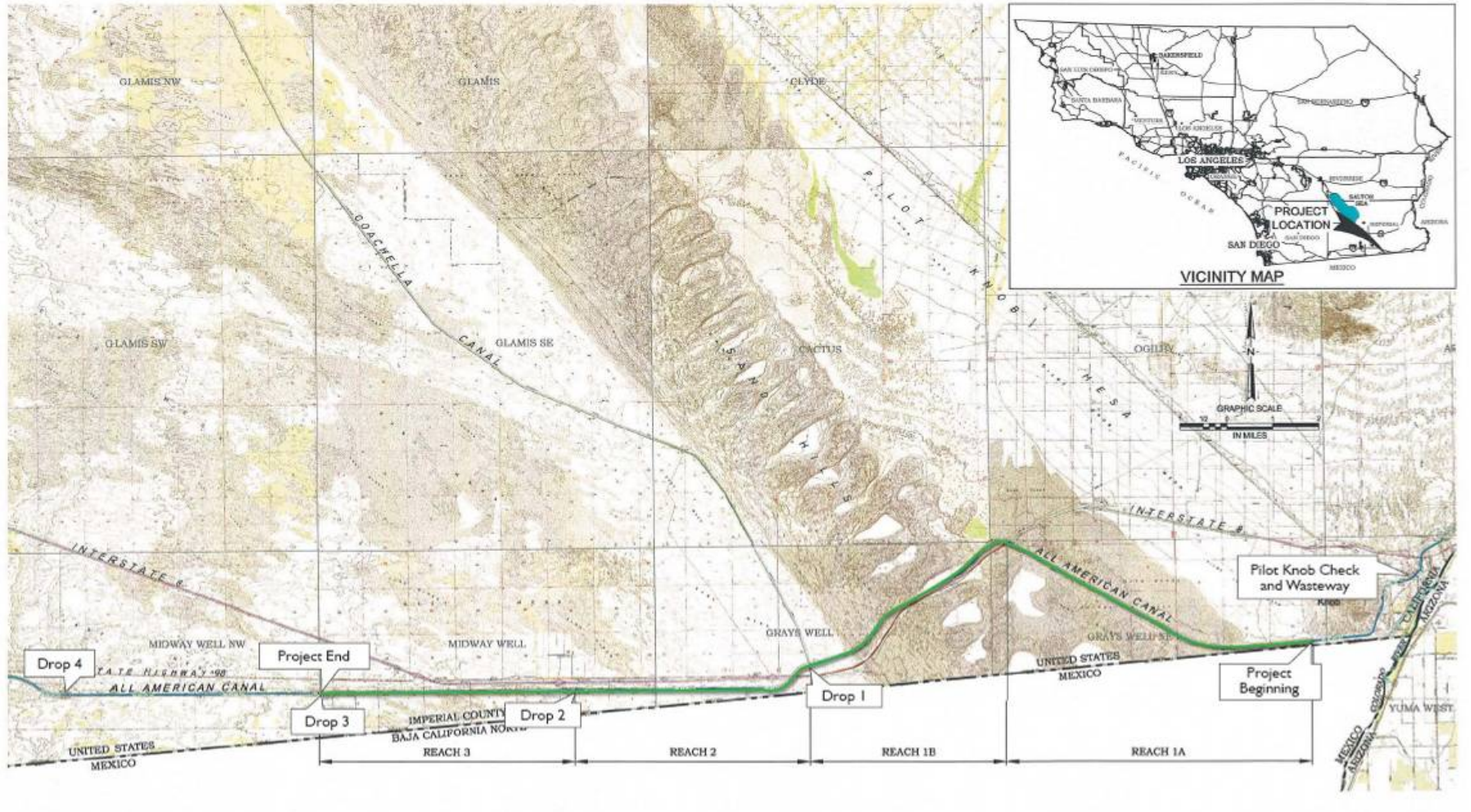
By

Todd Shields, Executive PM, AACLP



December 2007

AACL P Project Location



AACLP – FACT SHEET

- Constructed in the 1930s by Reclamation
- New Canal will conserve (seepage control by lining 23 miles of canal) 67,700 acre feet per year. Enough water for 500,000 people.
- Approximate lined canal construction cost is \$250M.
- Project being directed by the All-American Canal Coordinating Committee (IID/San Diego County Water Authority/Reclamation)

History of the All-American Canal Lining Project

- Congressional authorization of the Project in 1988
- Approved Environmental Compliance in 1994
- Project funding has two sources: State of California and San Diego County Water Authority
- Construction Started June, 2006 then stopped by court ordered injunction
- Court injunction lifted in early-2007, NTP issued to both contractors by early June, 2007. Cost of Injunction: \$30 million.

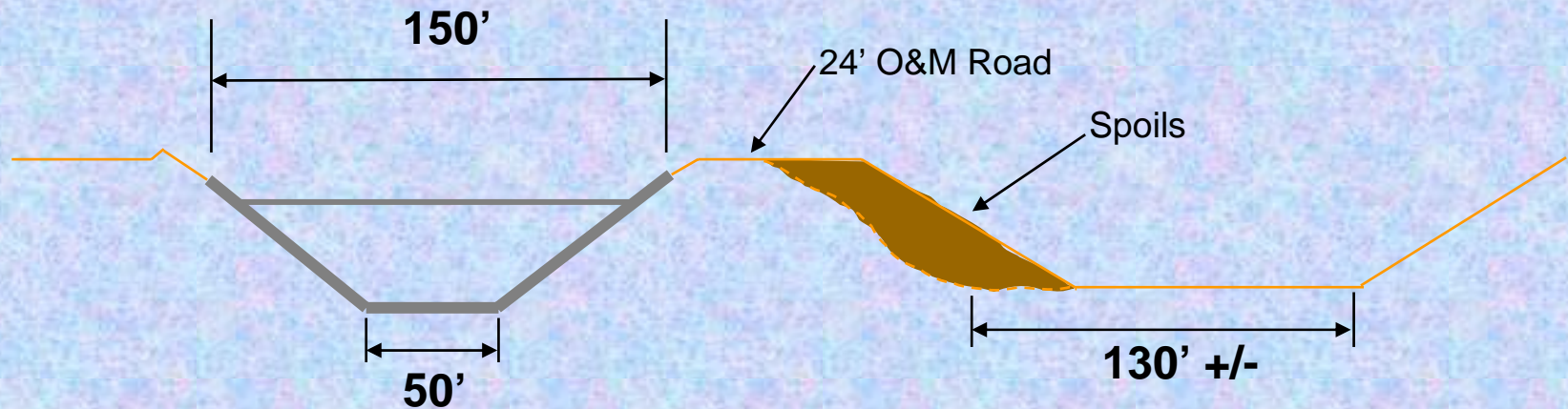
AACLP Project Elements

- Construct approximately 23 miles of lined canal adjacent to existing canal
- Construction started June 2007
- Construction projected to be complete by Spring 2010
- Reach 2 expected to be complete by early 2008

All-American Canal Typical Section

Proposed Lined Section
1.75H:1V side slope Reaches 1 & 2
2H:1V side slope Reach 3

Existing Unlined Section
2H:1V side slope



AACLP Project Organization

All-American Canal Coordinating Committee (Voting Members)

- IID – Michael King
- SDCWA – Kenneth Steele
- Chairman – Van Tenney

**IID/DWR AACLP
Funding Agreement**

IID Executive Program Manager
Todd Shields

Participants (Non-Voting)

- Reclamation – John English
- DWR – Chuck Keene
- San Luis Rey
- CVWD
- PVID

Parsons Project Manager
Uli Kappus

Design

**Bookman-Edmonston
Project Manager – Wayne Dahl**

- *Montgomery Watson Harza*
- *Various Consultants*
- Canal Design - Dewatering
- Sedimentation - Soils
- Flow Measurement/
Operations
- Cost Estimating
- Construction Techniques

Design Coordination

**Coordinator –
Walt Long**

- *Geotechnics, Inc.*
- *Hale Engineering*

Construction Management

**Construction Manager –
Don Crumbley**

Environmental Activities

**Environmental
Coordinator –
Michel Remington, IID**

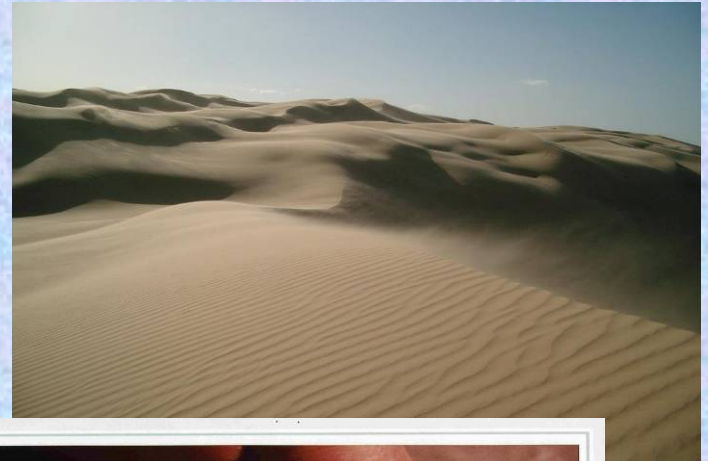
- AFM Affiliates
Cultural Resources
- Dr. Paul Krausman
Large Mammal Surveys
- EcoSystems Restoration
Associates
Wetlands Enhancement
- RECON • Parsons

Project Challenges

- Minimizing Project Impact due to Design, and Schedule Changes
- Environmental Constraints
- Maintaining Public Access through Active Construction Site
- Security along International Border
- Continuous water delivery

Environmental Program Objectives

- Compliance with Multiple Requirements:
- Air Quality
- Cultural Resources
- Endangered Species
- Hazardous Materials/Solid Waste
- Recreation / Transportation
- Water Quality/Stormwater
- Wetlands
- Wildlife



Challenge of Public Access and Recreation During Construction

- Coordinating Construction and Public Use Near Work Areas
- Interagency Coordination During Peak Use Periods
- Public Information Distribution is Essential
- Interagency Recreation and Transportation Management Plan



Final Draft

Recreation and Transportation Management Plan
for the
All American Canal Lining Project



Prepared by
The All American Canal Lining Project Work Group
Project Planning Committee



August 8, 2007

DRAFT - CLIENT-PRIVILEGED DOCUMENT - NOT FOR DISTRIBUTION
10_AAACL_P_Draft_RTMP_080807.doc
8/8/07

Safety Program



Current Status



- Over 12 Million CY of Earth Moved to Date
- First major concrete pour completed on August 8, 2007
- 5 miles of Production Lining of New Canal completed to date.

Original Construction



Completed Canal



Construction Photos



Construction Photos



Construction Photos





Construction Photos



Construction Photos



Construction Photos



Construction Photos



**Thank You
Questions?**