

| REVISIONS | | | | | |
|-----------|------|-------------|----|------|------|
| REV | ZONE | DESCRIPTION | BY | DATE | APPD |
| | | | | | |
| | | | | | |

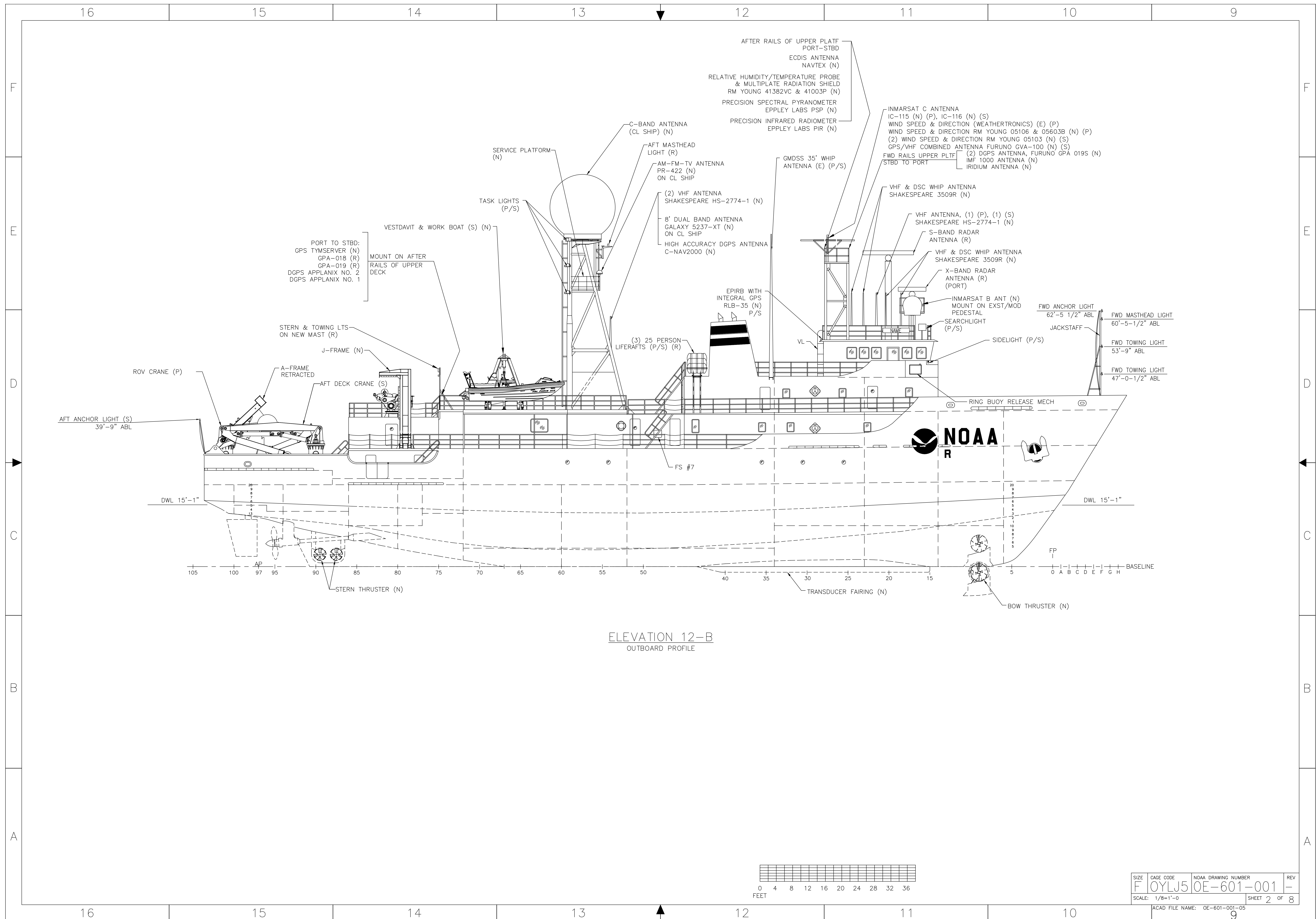
GENERAL NOTES

1. THE PURPOSE OF THIS DRAWING IS TO SHOW THE MODIFIED GENERAL ARRANGEMENT OF THE SHIP "EX-CAPABLE" AS CONVERTED TO A NOAA RESEARCH SHIP "OKEANOS EXPLORER".
2. ALL WORK (TO INCLUDE MATERIALS, WORKMANSHIP, AND ENGINEERING DESIGNS) SHALL BE IN ACCORDANCE WITH THE SPECIFICATIONS AND SHALL MEET APPLICABLE "AMERICA BUREAU OF SHIPPING" (ABS), CFR 46, AND SOLAS REQUIREMENTS.
3. ABBREVIATIONS ARE IN ACCORDANCE WITH ASME Y14.38-1999.
4. ALL FEATURES ARE EXISTING UNLESS NOTED: (N) NEW, (M) MODIFIED, (R) RELOCATED.
5. WHERE EQUIPMENT MANUFACTURER/MODEL IS IDENTIFIED SUBSTITUTIONS MUST BE APPROVED BY NOAA AS HAVING EQUAL SALIENT FEATURES AND QUALITY OF CONSTRUCTION. IN ADDITION, THE PROPOSED SUBSTITUTE MUST BE SHOWN TO BE SUITABLE FOR INTEGRATION INTO THE SYSTEM WITHOUT HAVING A NEGATIVE IMPACT ON THE OVERALL ARRANGEMENT, PERFORMANCE, MAINTENANCE OR ACCESS TO THE SPACE.
6. CLEAR HEAD ROOM IN NORMALLY OCCUPIED SPACES SHALL BE AS HIGH AS POSSIBLE, BUT NOT LESS THAN 6 FEET 9 INCHES.

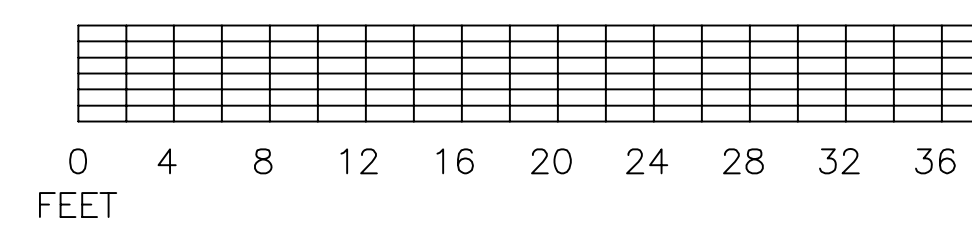
| NO | TITLE | DRAWING NO. | | | | |
|--|-------|--|-----------|---------------------|-------------------|--------------|
| REFERENCES | | | | | | |
| NATIONAL OCEANIC AND ATMOSPHERIC ADMINISTRATION OFFICE OF NOAA CORPS OPERATIONS | | | | | | |
| PROJECT ENGR | DATE | NOAA SHIP OKEANOS EXPLORER GENERAL ARRANGEMENT PLANS & PROFILES- CONVERTED VESSEL | | | | |
| ASST PROG MGR | DATE | | | | | |
| PROGRAM MGR | DATE | | | | | |
| DESIGNED INN & SMC | 11/05 | SIZE | CAGE CODE | NOAA DRAWING NUMBER | REV | |
| CHECKED P. CHIAVETTA | 11/05 | F | OYLJ5 | OE-601-001 | - | |
| REVIEWED | | APPROVED FOR NOAA | | CAD FILENAME: | OE-601-001-05.DWG | SHEET 1 OF 8 |
| APPROVED | | SCALE: AS NOTED | | | | |

AMSEC LLC
M. ROSENBLATT & SON GROUP
NAVAL ARCHITECTS & MARINE ENGINEERS
BREMERSON, OAKLAND, SAN DIEGO

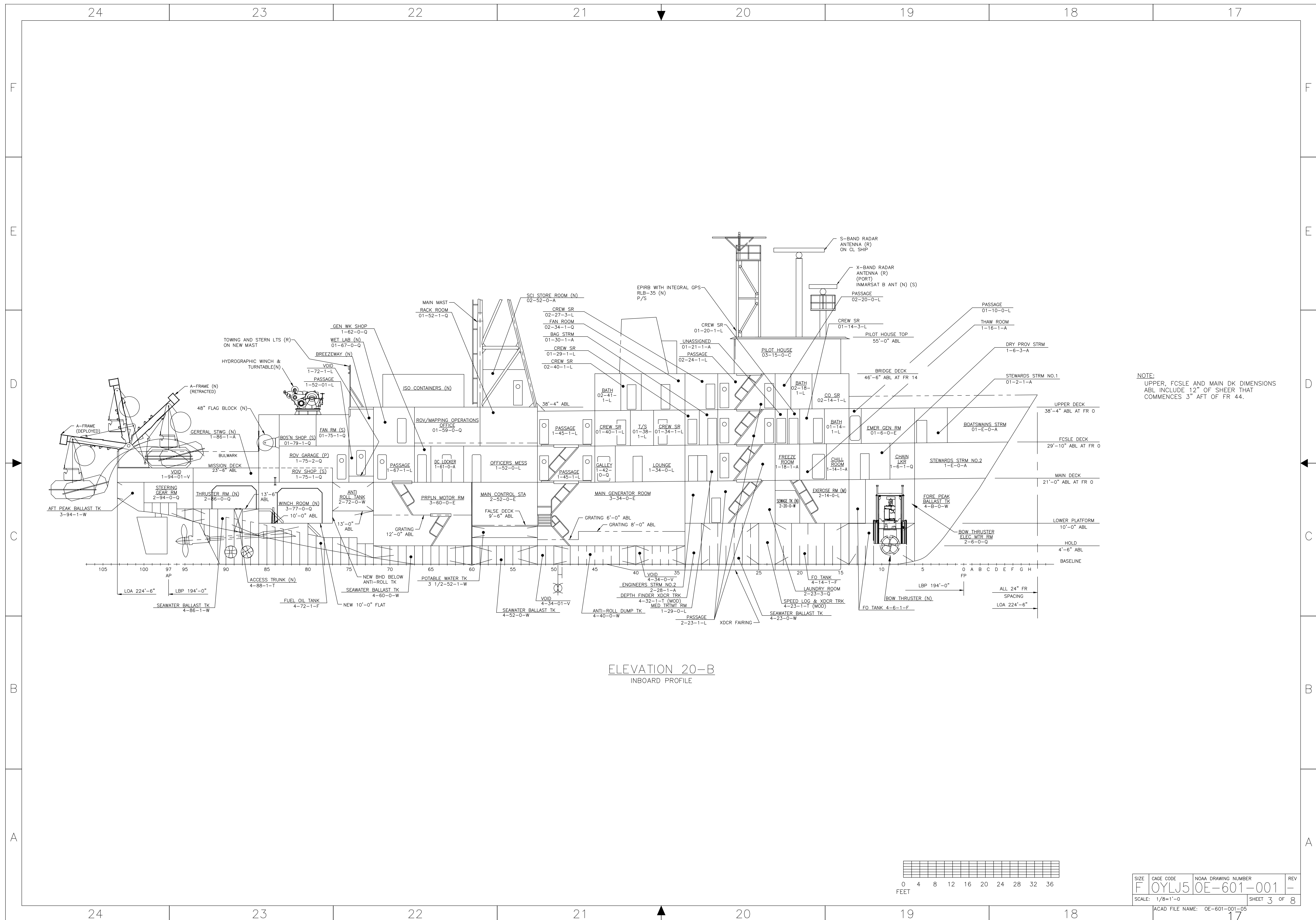
NOAA SHIP OKEANOS EXPLORER
GENERAL ARRANGEMENT
PLANS & PROFILES-
CONVERTED VESSEL



ELEVATION 12-B
OUTBOARD PROFILE

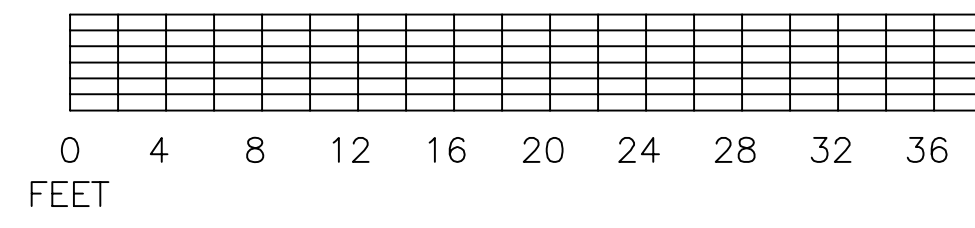


| | | | |
|-------------------------------|-----------|---------------------|--------------|
| SIZE | CAGE CODE | NOAA DRAWING NUMBER | REV |
| F | OYLJ5 | OE-601-001 | - |
| SCALE: 1/8"=1'-0" | | | SHEET 2 OF 8 |
| ACAD FILE NAME: OE-601-001-05 | | | 9 |



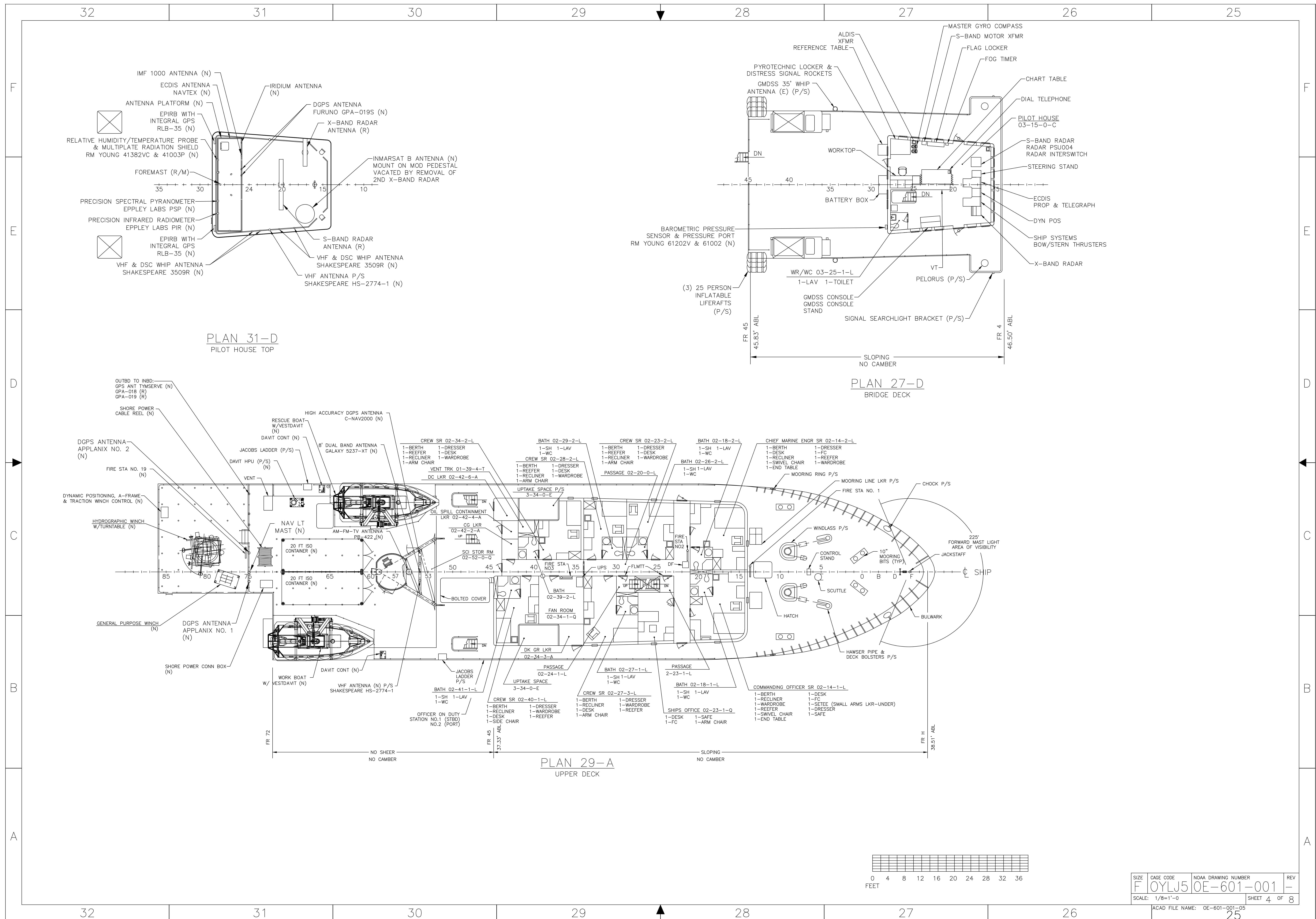
ELEVATION 20-B
INBOARD PROFILE

NOTE:
UPPER, FCSLE AND MAIN DK DIMENSIONS
ABL INCLUDE 12" OF SHEER THAT
COMMENCES 3' AFT OF FR 44.



| | | | |
|-------------------|-----------|---------------------|--------------|
| SIZE | CAGE CODE | NOAA DRAWING NUMBER | REV |
| F | OYLJ5 | OE-601-001 | - |
| SCALE: 1/8"=1'-0" | | | SHEET 3 OF 8 |

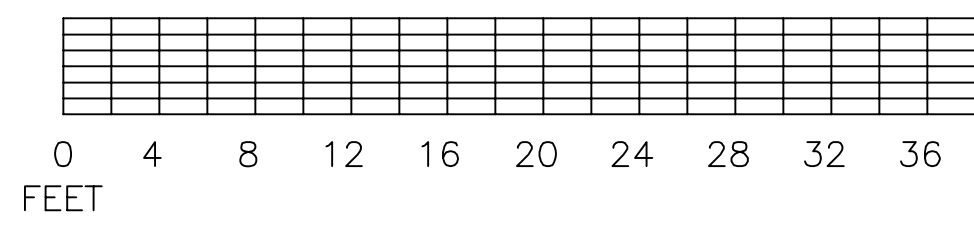
ACAD FILE NAME: OE-601-001-05
17



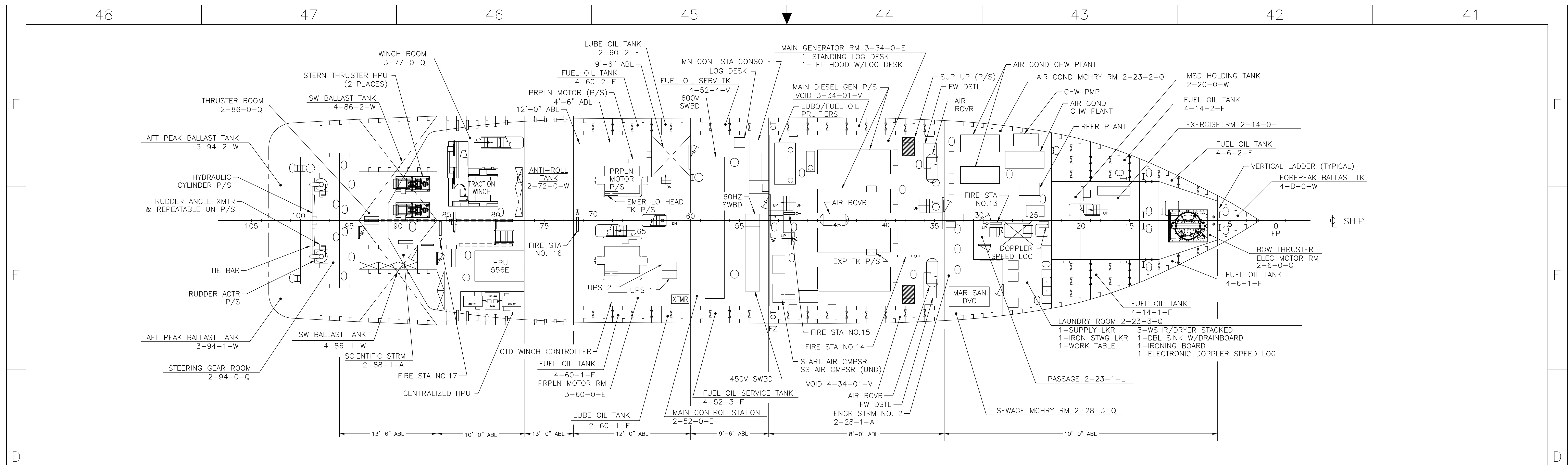
PLAN 31-D
PILOT HOUSE TOP

PLAN 27-D
BRIDGE DECK

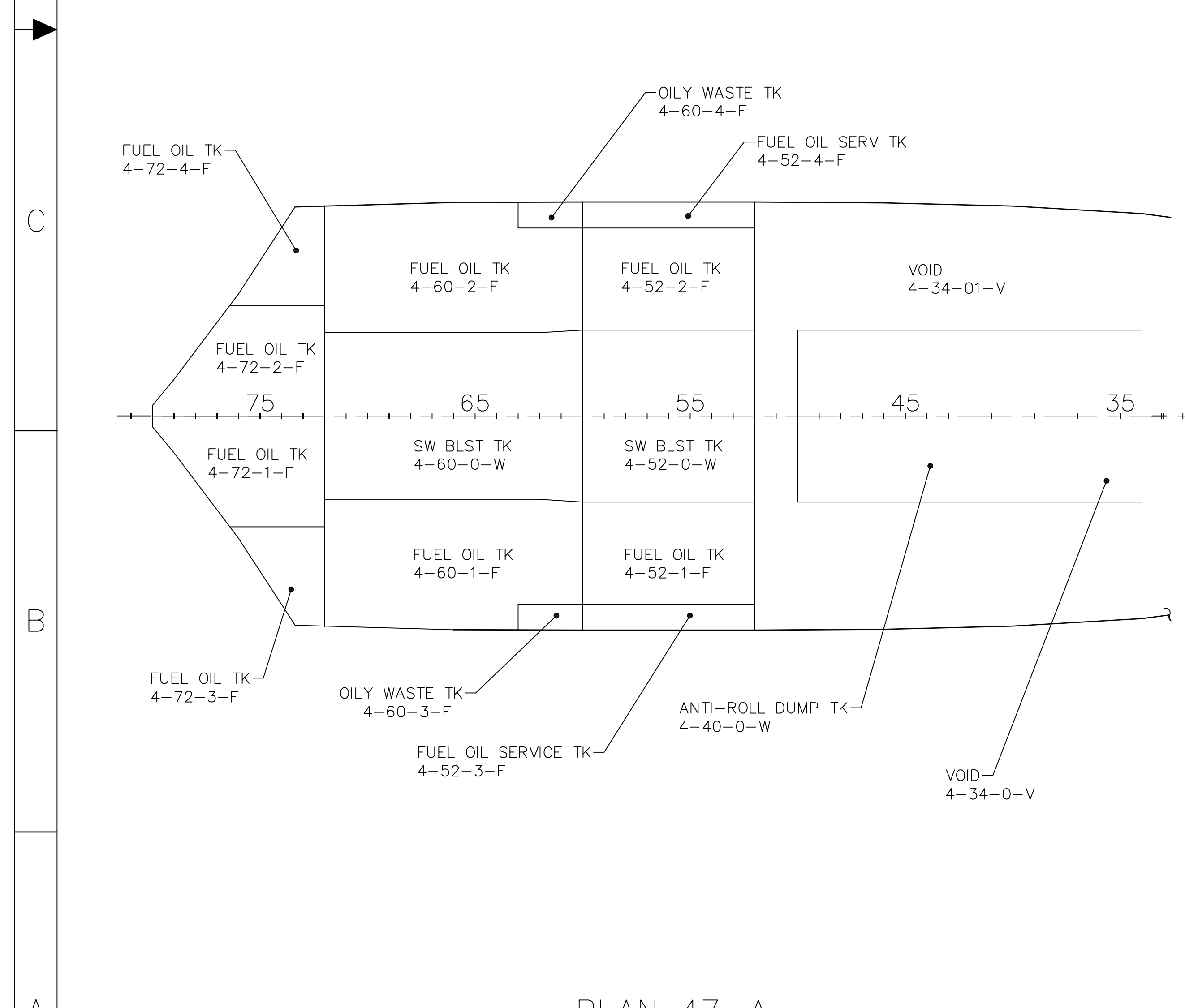
PLAN 29-A
UPPER DECK



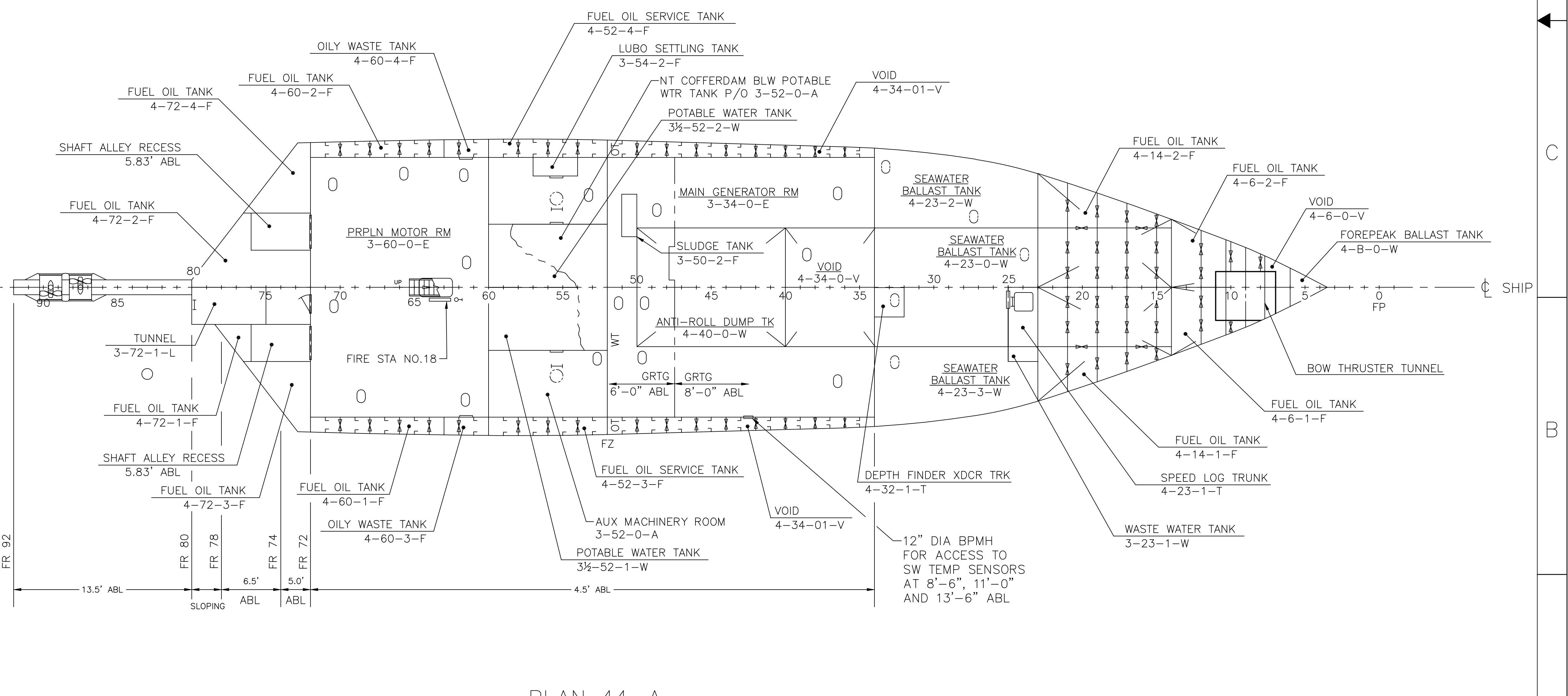
| | | | |
|-------------------------------|-----------|---------------------|--------------|
| SIZE | CAGE CODE | NOAA DRAWING NUMBER | REV |
| F | OYLJ5 | OE-601-001 | - |
| SCALE: 1/8"=1'-0" | | | SHEET 4 OF 8 |
| ACAD FILE NAME: OE-601-001-05 | | | 25 |



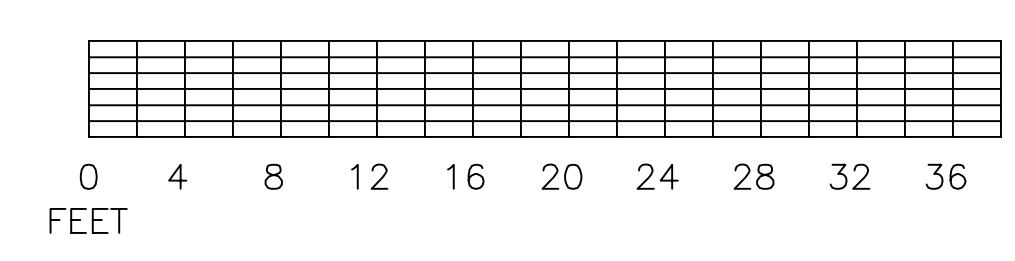
PLAN 45-D
LOWER DECK



PLAN 47-A
INNERBOTTOM

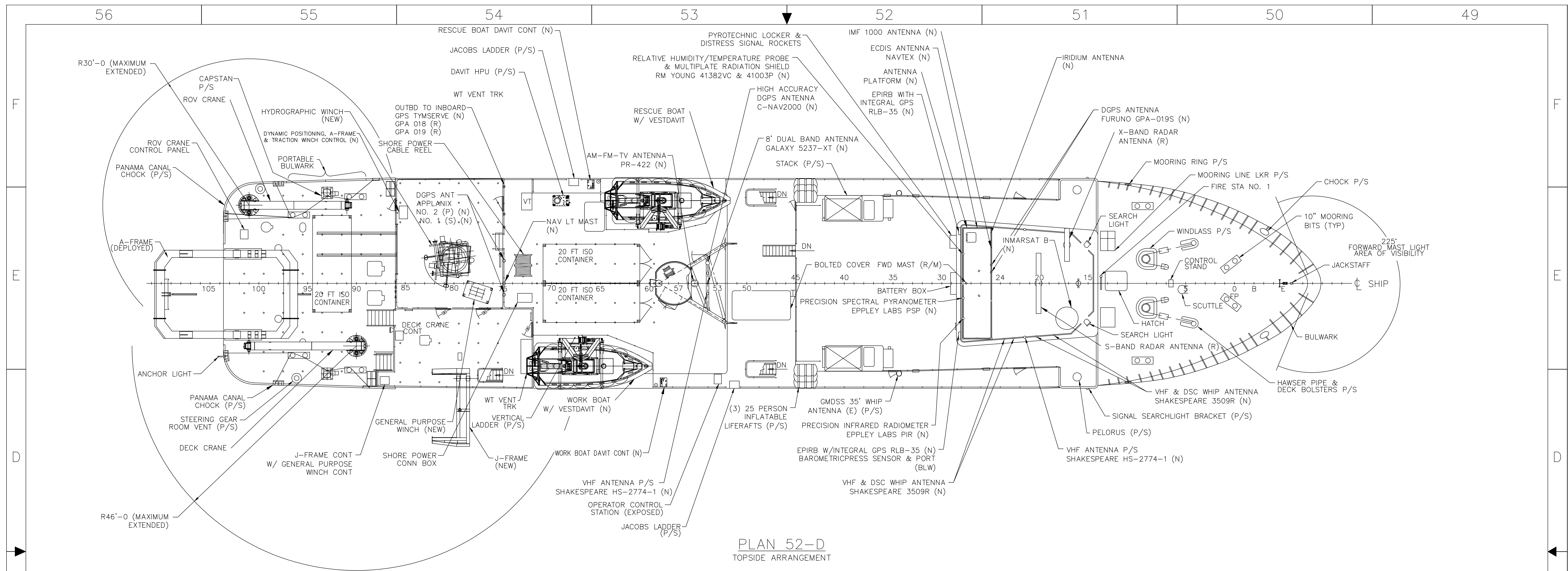


PLAN 44-A
HOLD

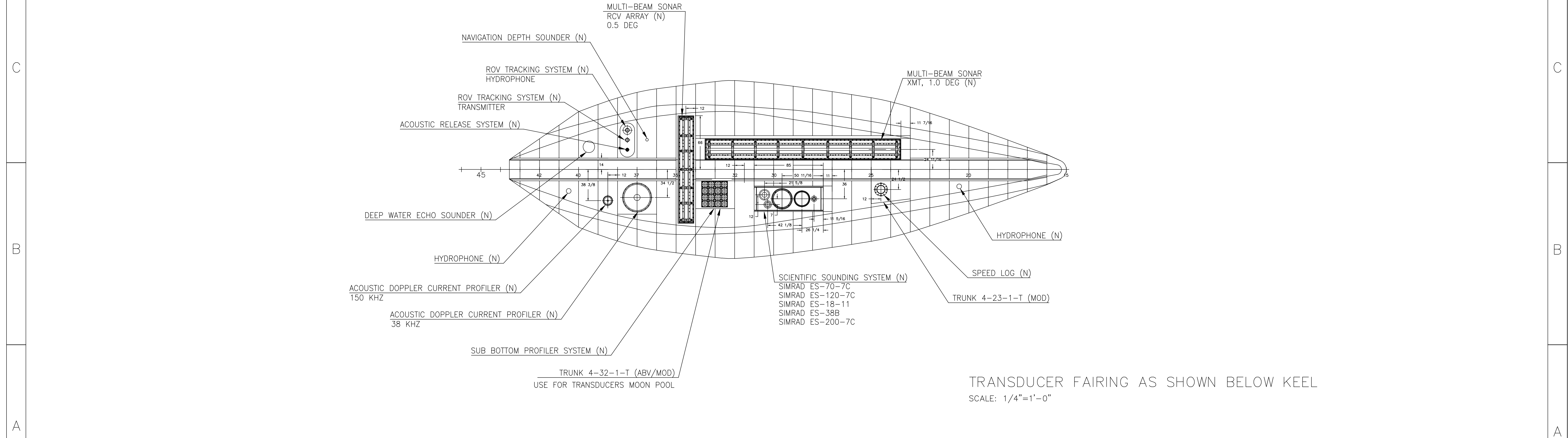


| | | | |
|-------------------|-----------|---------------------|--------------|
| SIZE | CAGE CODE | NOAA DRAWING NUMBER | REV |
| F | OYLJ5 | OE-601-001 | - |
| SCALE: 1/8"=1'-0" | | | SHEET 6 OF 8 |

ACAD FILE NAME: OE-601-001-05
41

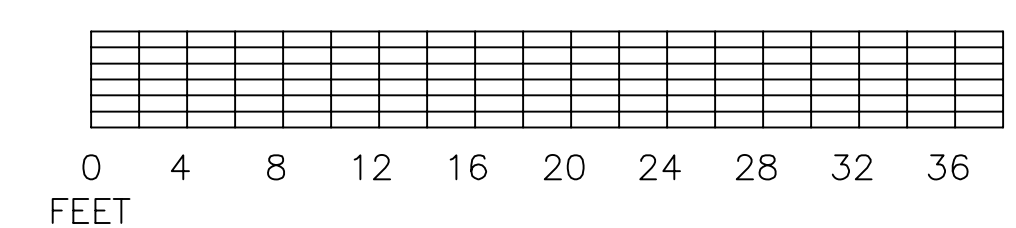


PLAN 52-D
TOPSIDE ARRANGEMENT

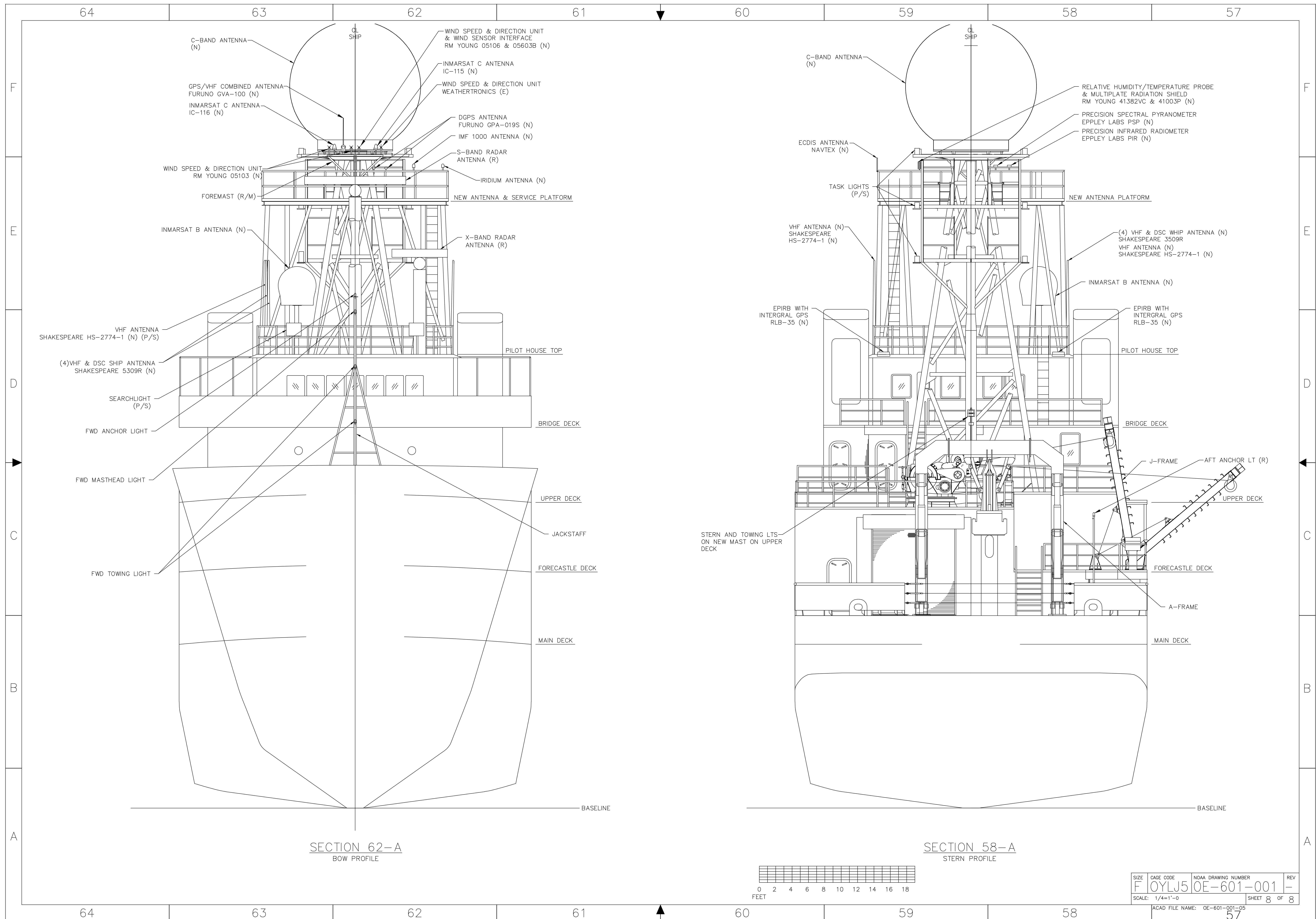


PLAN 52-A
FAIRING ARRANGEMENT

TRANSDUCER FAIRING AS SHOWN BELOW KEEL
SCALE: 1/4"=1'-0"

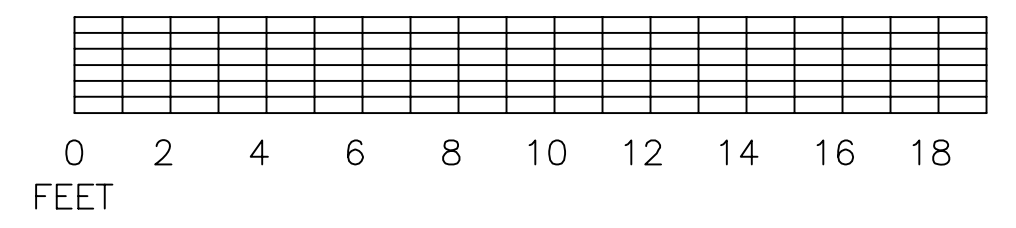


| | | | |
|-------------------------------|-----------|---------------------|--------------|
| SIZE | CAGE CODE | NOAA DRAWING NUMBER | REV |
| F | OYLJ5 | OE-601-001 | 05 |
| SCALE: 1/8"=1'-0" & AS NOTED | | | SHEET 7 OF 8 |
| ACAD FILE NAME: OE-601-001-05 | | | 49 |



SECTION 62-A
BOW PROFILE

SECTION 58-A
STERN PROFILE



| | | | |
|-------------------------------|-----------|---------------------|--------------|
| SIZE | CAGE CODE | NOAA DRAWING NUMBER | REV |
| F | OYLJ5 | OE-601-001 | - |
| SCALE: 1/4"=1'-0" | | | SHEET 8 OF 8 |
| ACAD FILE NAME: OE-601-001-05 | | | 57 |