

**ACTIVE STATUS POPULATION:
GROWTH ANALYSIS**

Prepared for:

Department of Developmental Services

By:

Amy Mickel, Ph.D.

Stan Taylor, Ph.D.

College of Business Administration
California State University, Sacramento

May 10, 2005

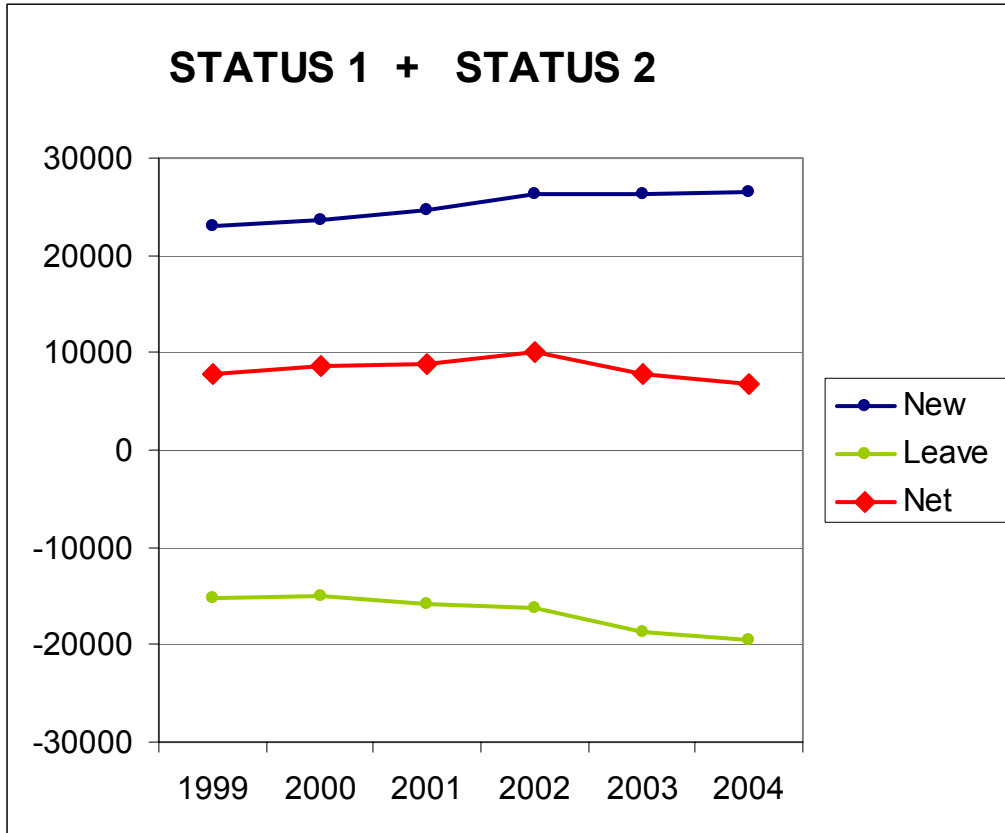
Table of Contents

	<u>Pages</u>
Status 1 and Status 2: Graphs and Summary Tables.....	2 - 4
Diagnosis: Graphs and Tables.....	5 - 10
Domain: Graphs and Tables.....	11 - 17
Residence: Graphs and Tables.....	18 - 24
Age: Graphs and Tables.....	25 - 28
Regional Centers: Summary Tables.....	29 - 32
Status Change for All Regional Centers.....	33 - 34

Definition of Terms

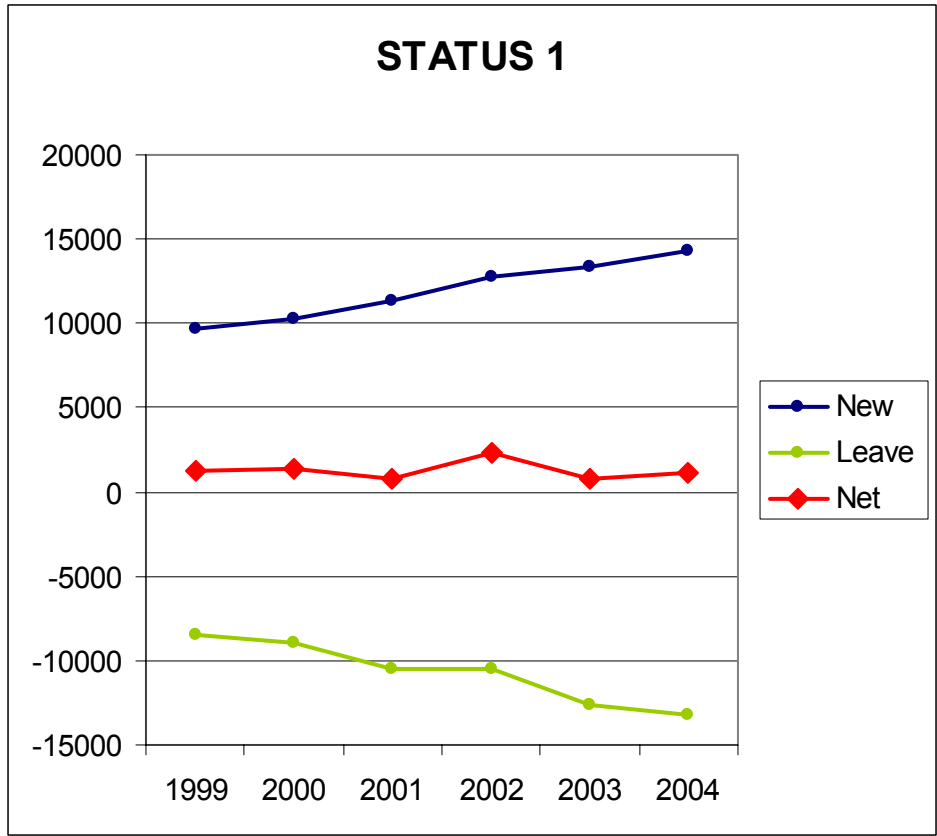
- Status 1:* Children birth to age three who are at risk of having a developmental disability or who have a developmental delay but have not been diagnosed as having a developmental disability.
- Status 2:* Persons diagnosed as having a developmental disability and being served in the community but not in a developmental center.
- New:* Reflects clients that entered the system as Status 1 or Status 2.
- Leave:* Reflects clients that are no longer Status 1 or Status 2.
- Net:* Reflects “new” clients minus “leave” clients
- Net Percent:* Reflects “net” divided by the total number of clients (Status 1 + 2) at the beginning of the calendar year.
- Year:* Represents population from Jan 1-December 31. For example, 2004 reflects population from January 1, 2004 - December 31, 2004.

STATUS 1 & STATUS 2: GRAPH AND SUMMARY TABLE



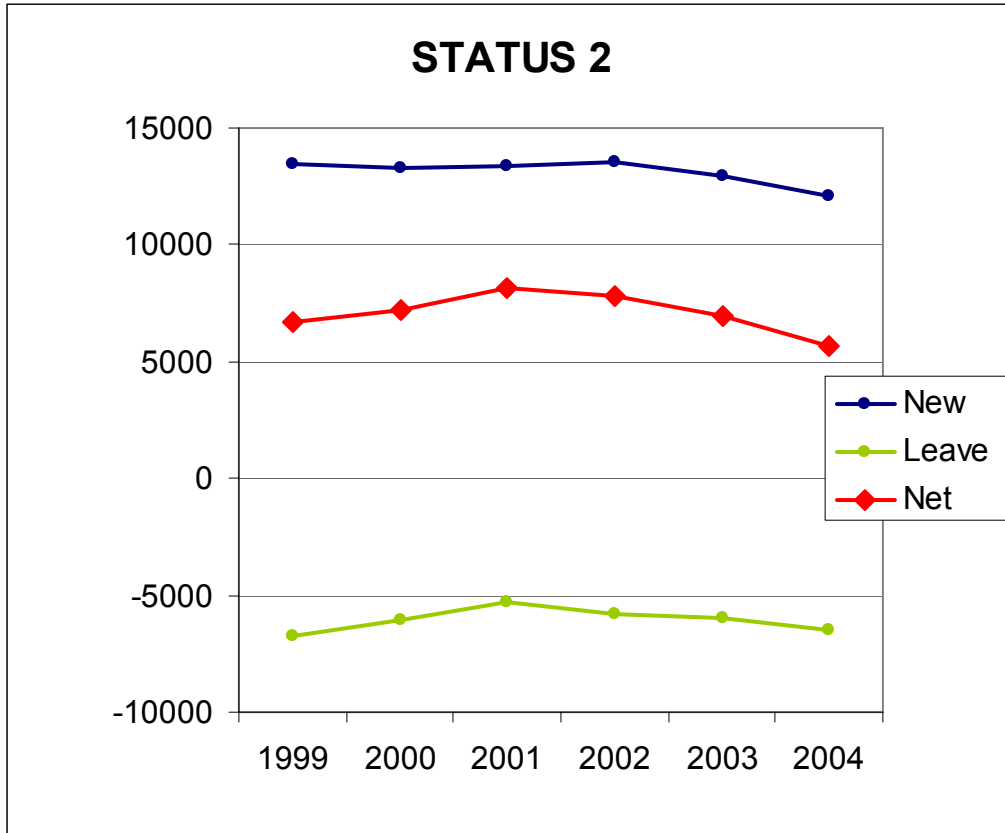
	New	Leave	Net	Net %
1999	23,100	-15,216	7,884	5.3%
2000	23,553	-14,935	8,618	5.5%
2001	24,707	-15,838	8,869	5.4%
2002	26,274	-16,231	10,043	5.8%
2003	26,366	-18,623	7,743	4.2%
2004	26,464	-19,622	6,842	3.6%

STATUS 1: GRAPH AND SUMMARY TABLE



	New	Leave	Net	Net %
1999	9,668	-8,447	1,221	8.1%
2000	10,290	-8,911	1,379	8.5%
2001	11,293	-10,550	743	4.2%
2002	12,734	-10,458	2,276	12.4%
2003	13,398	-12,625	773	3.8%
2004	14,349	-13,174	1,175	5.5%

STATUS 2: GRAPH AND SUMMARY TABLE



	New	Leave	Net	Net %
1999	13,432	-6,769	6,663	5.0%
2000	13,263	-6,024	7,239	5.2%
2001	13,414	-5,288	8,126	5.5%
2002	13,540	-5,773	7,767	5.0%
2003	12,968	-5,998	6,970	4.3%
2004	12,115	-6,448	5,667	3.3%

DIAGNOSIS: SUMMARY TABLES

New

	1999	2000	2001	2002	2003	2004
MR	3,372	2,312	1,994	3,013	1,964	1,721
AUT	2,355	2,379	2,912	3,524	3,429	3,554
CP	2,412	1,882	1,701	2,357	1,618	1,372
EP	2,459	1,897	1,685	2,378	1,597	1,276
C5	1,653	1,524	1,558	1,833	1,542	1,341

Leave

	1999	2000	2001	2002	2003	2004
MR	-2,314	-1,637	-1,191	-581	-1,437	-1,477
AUT	-610	-541	-380	-199	-638	-791
CP	-1,497	-1,105	-833	-446	-942	-1,077
EP	-1,625	-1,201	-936	-519	-1,064	-1,200
C5	-901	-673	-577	-396	-672	-780

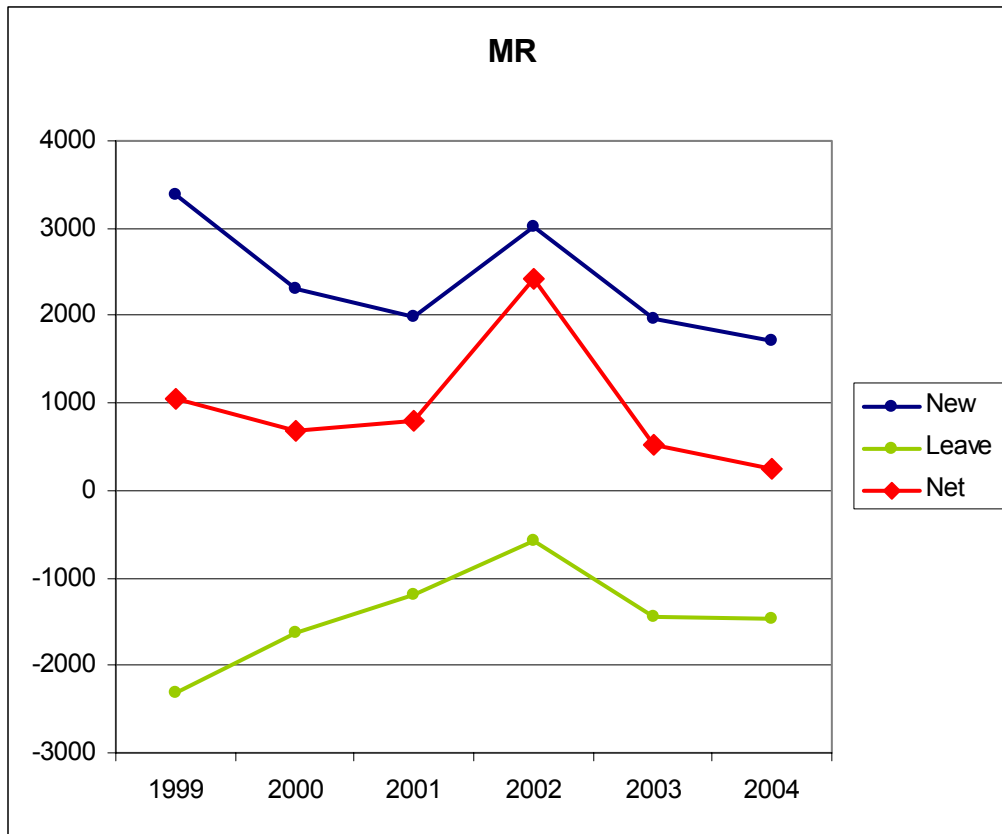
Net

	1999	2000	2001	2002	2003	2004
MR	1,058	675	803	2,432	527	244
AUT	1,745	1,838	2,532	3,325	2,791	2,763
CP	915	777	868	1,911	676	295
EP	834	696	749	1,859	533	76
C5	752	851	981	1,437	870	561

Net Percent (change from previous year's total)

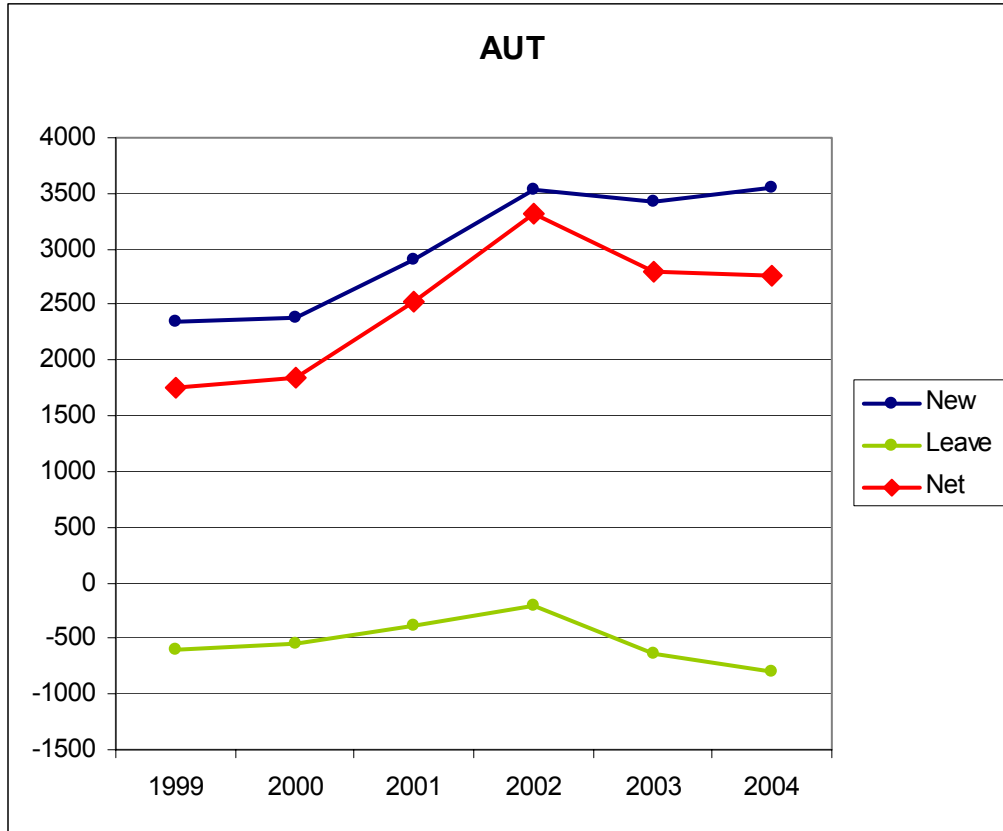
	1999	2000	2001	2002	2003	2004
MR	2.15%	1.34%	1.57%	4.69%	0.97%	0.45%
AUT	15.59%	14.21%	17.13%	19.21%	13.53%	11.80%
CP	3.34%	2.75%	2.99%	6.39%	2.12%	0.91%
EP	2.72%	2.21%	2.33%	5.65%	1.53%	0.22%
C5	6.59%	7.00%	7.54%	10.27%	5.64%	3.44%

MR: GRAPH AND TABLE



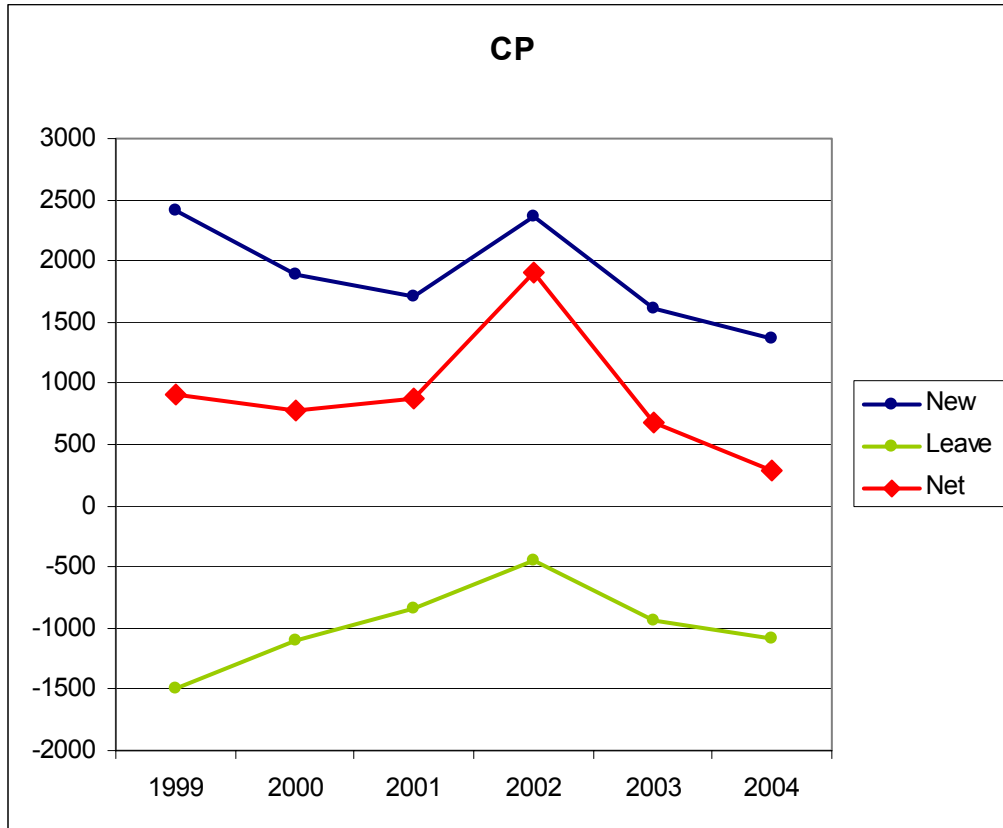
	New	Leave	Net	Net %
1999	3,372	-2,314	1,058	2.15%
2000	2,312	-1,637	675	1.34%
2001	1,994	-1,191	803	1.57%
2002	3,013	-581	2,432	4.69%
2003	1,964	-1,437	527	0.97%
2004	1,721	-1,477	244	0.45%

AUT: GRAPH AND TABLE



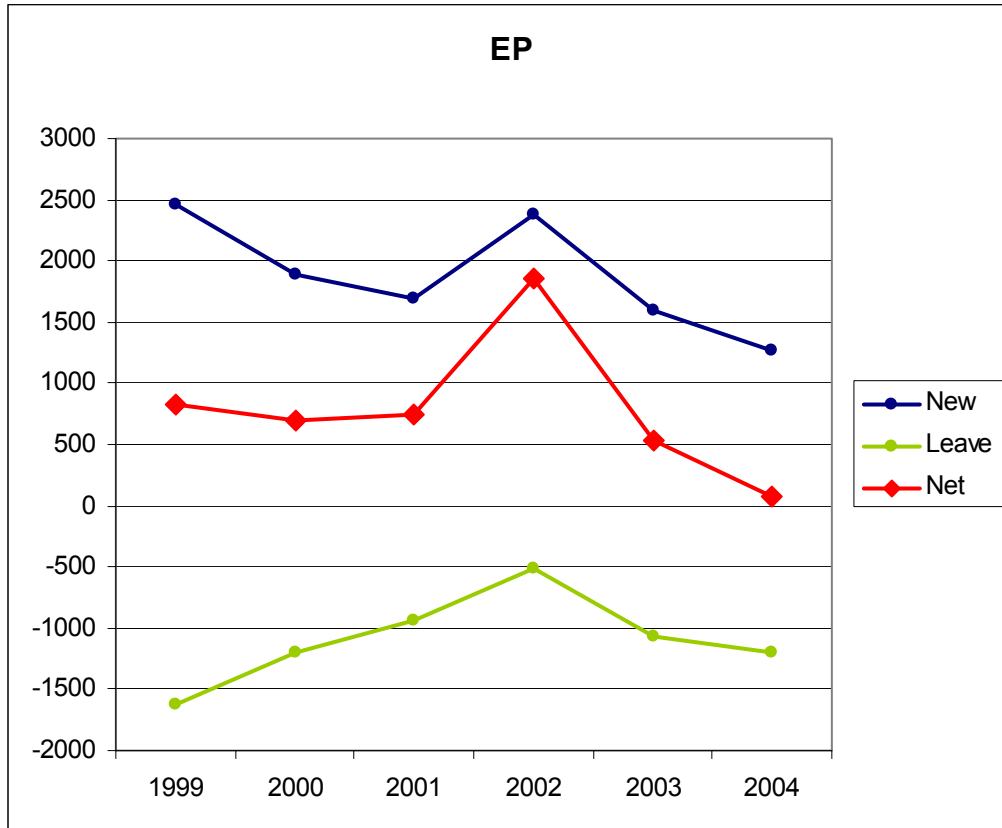
	New	Leave	Net	Net %
1999	2,355	-610	1,745	15.59%
2000	2,379	-541	1,838	14.21%
2001	2,912	-380	2,532	17.13%
2002	3,524	-199	3,325	19.21%
2003	3,429	-638	2,791	13.53%
2004	3,554	-791	2,763	11.80%

CP: GRAPH AND TABLE



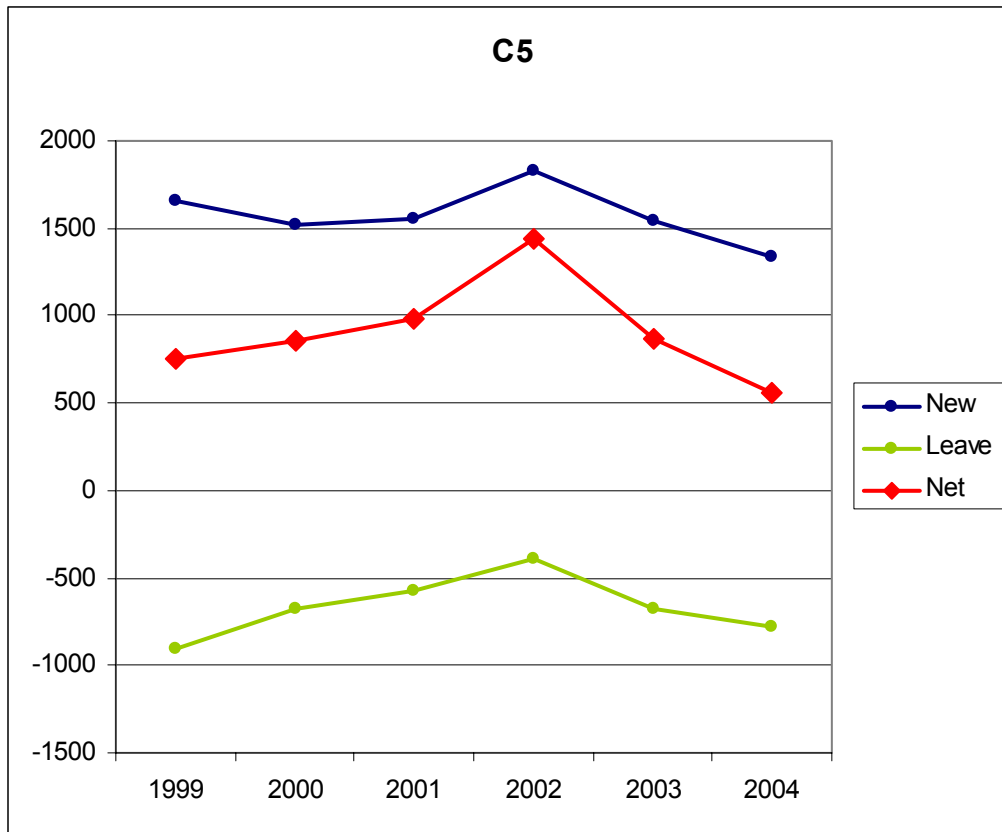
	New	Leave	Net	Net %
1999	2,412	-1,497	915	3.34%
2000	1,882	-1,105	777	2.75%
2001	1,701	-833	868	2.99%
2002	2,357	-446	1,911	6.39%
2003	1,618	-942	676	2.12%
2004	1,372	-1,077	295	0.91%

EP: GRAPH AND TABLE



	New	Leave	Net	Net %
1999	2,459	-1,625	834	2.72%
2000	1,897	-1,201	696	2.21%
2001	1,685	-936	749	2.33%
2002	2,378	-519	1,859	5.65%
2003	1,597	-1,064	533	1.53%
2004	1,276	-1,200	76	0.22%

C5: GRAPH AND TABLE



	New	Leave	Net	Net %
1999	1,653	-901	752	6.59%
2000	1,524	-673	851	7.00%
2001	1,558	-577	981	7.54%
2002	1,833	-396	1,437	10.27%
2003	1,542	-672	870	5.64%
2004	1,341	-780	561	3.44%

DOMAIN: SUMMARY TABLES

New

	1999	2000	2001	2002	2003	2004
MOTOR	6,331	5,609	5,493	7,311	6,419	6,364
IND LIV	11,161	10,017	10,376	13,230	11,256	10,673
SOCIAL	11,117	9,985	10,276	13,376	11,314	10,798
EMOTE	14,578	12,645	12,580	16,559	13,099	12,038
COGNTV	10,931	9,859	10,101	12,961	11,016	10,470
COMMCT	10,568	9,528	9,796	12,714	10,988	10,454

Leave

	1999	2000	2001	2002	2003	2004
MOTOR	-3,626	-2,800	-2,310	-1,462	-2,672	-2,992
IND LIV	-5,899	-4,480	-3,705	-2,085	-4,397	-4,894
SOCIAL	-5,948	-4,504	-3,715	-2,061	-4,532	-4,736
EMOTE	-8,094	-5,949	-4,909	-2,521	-5,817	-6,226
COGNTV	-5,911	-4,493	-3,679	-2,009	-4,398	-4,694
COMMCT	-5,827	-4,314	-3,564	-2,001	-4,300	-4,513

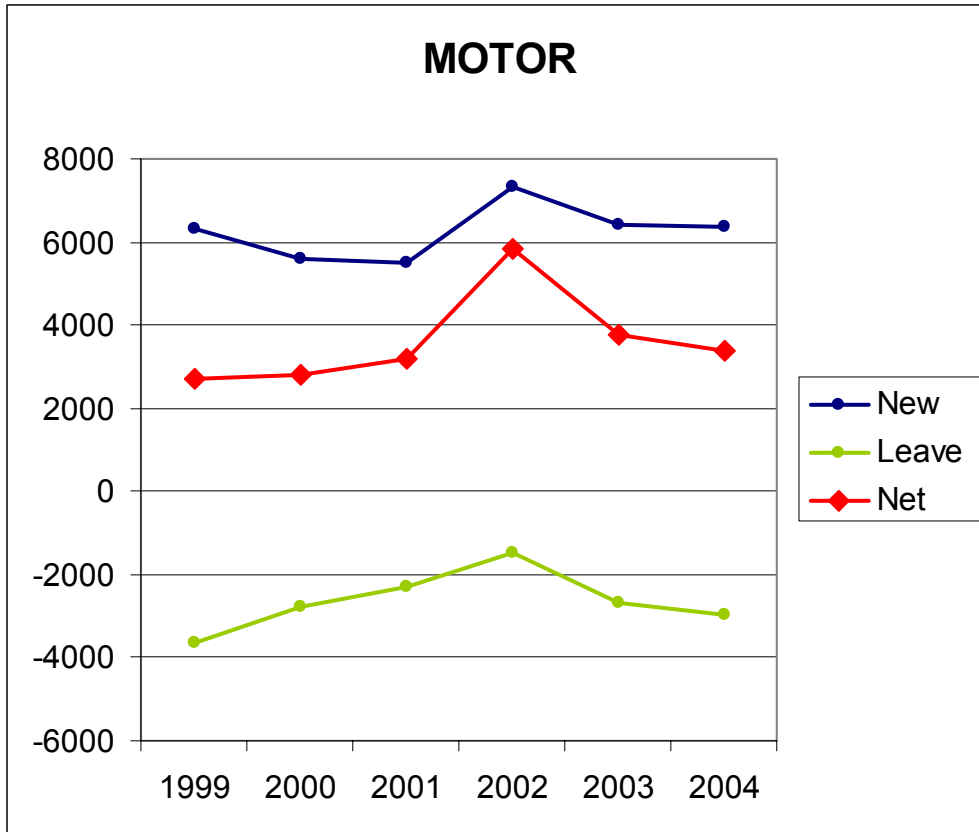
Net

	1999	2000	2001	2002	2003	2004
MOTOR	2,705	2,809	3,183	5,849	3,747	3,372
IND LIV	5,262	5,537	6,671	11,145	6,859	5,779
SOCIAL	5,169	5,481	6,561	11,315	6,782	6,062
EMOTE	6,484	6,696	7,671	14,038	7,282	5,812
COGNTV	5,020	5,366	6,422	10,952	6,618	5,776
COMMCT	4,741	5,214	6,232	10,713	6,688	5,941

Net Percent (change from previous year's total)

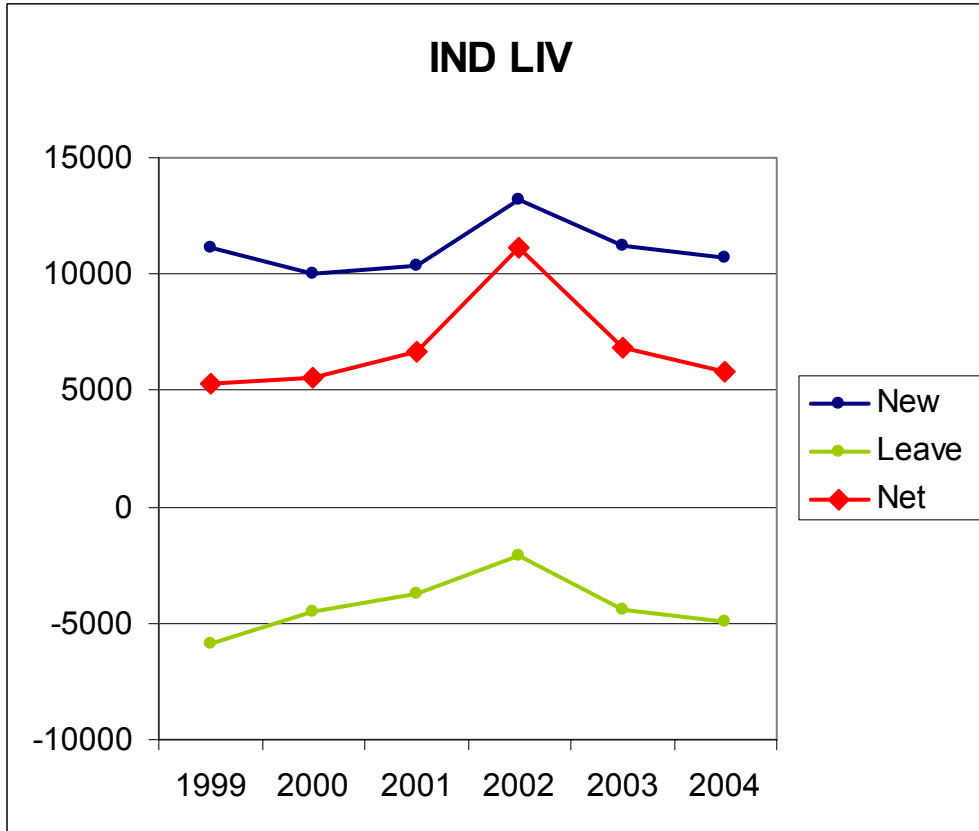
	1999	2000	2001	2002	2003	2004
MOTOR	4.73%	4.69%	5.08%	8.88%	5.23%	4.47%
IND LIV	5.89%	5.85%	6.66%	10.43%	5.82%	4.63%
SOCIAL	5.91%	5.92%	6.69%	10.82%	5.85%	4.94%
EMOTE	5.18%	5.09%	5.54%	9.61%	4.55%	3.47%
COGNTV	5.65%	5.72%	6.47%	10.37%	5.68%	4.69%
COMMCT	5.47%	5.70%	6.45%	10.41%	5.89%	4.94%

MOTOR: GRAPH AND TABLE



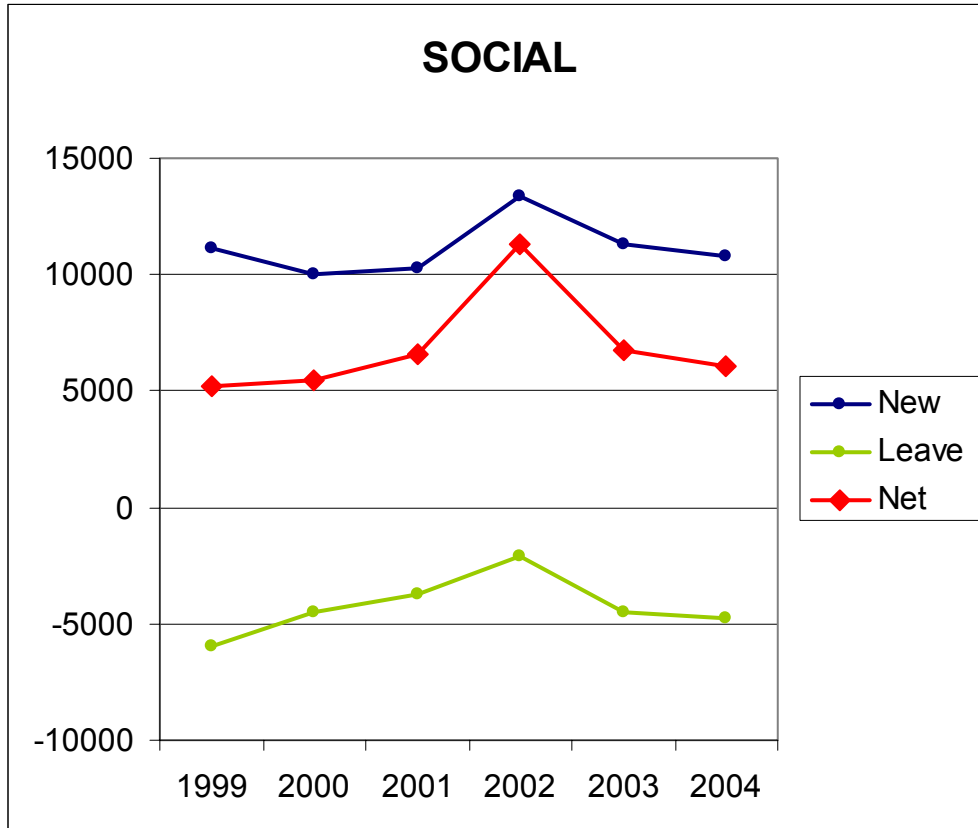
	New	Leave	Net	Net %
1999	6,331	-3,626	2,705	4.73%
2000	5,609	-2,800	2,809	4.69%
2001	5,493	-2,310	3,183	5.08%
2002	7,311	-1,462	5,849	8.88%
2003	6,419	-2,672	3,747	5.23%
2004	6,364	-2,992	3,372	4.47%

IND LIV: GRAPH AND TABLE



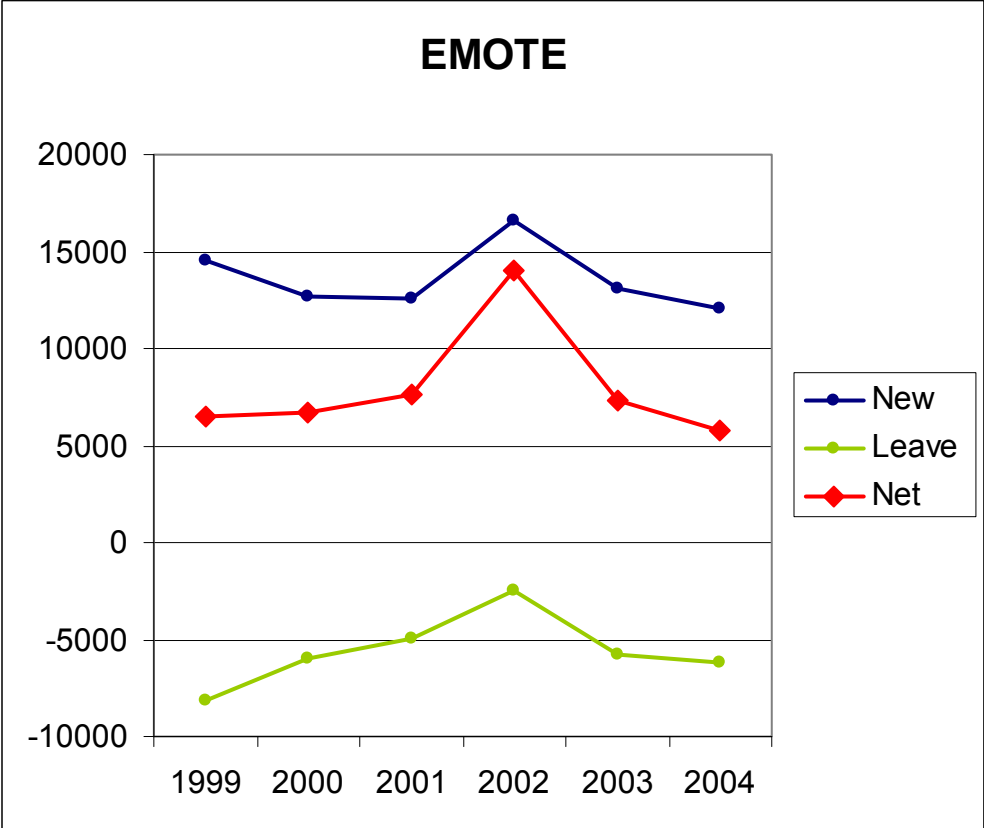
	New	Leave	Net	Net %
1999	11,161	-5,899	5,262	5.89%
2000	10,017	-4,480	5,537	5.85%
2001	10,376	-3,705	6,671	6.66%
2002	13,230	-2,085	11,145	10.43%
2003	11,256	-4,397	6,859	5.82%
2004	10,673	-4,894	5,779	4.63%

SOCIAL: GRAPH AND TABLE



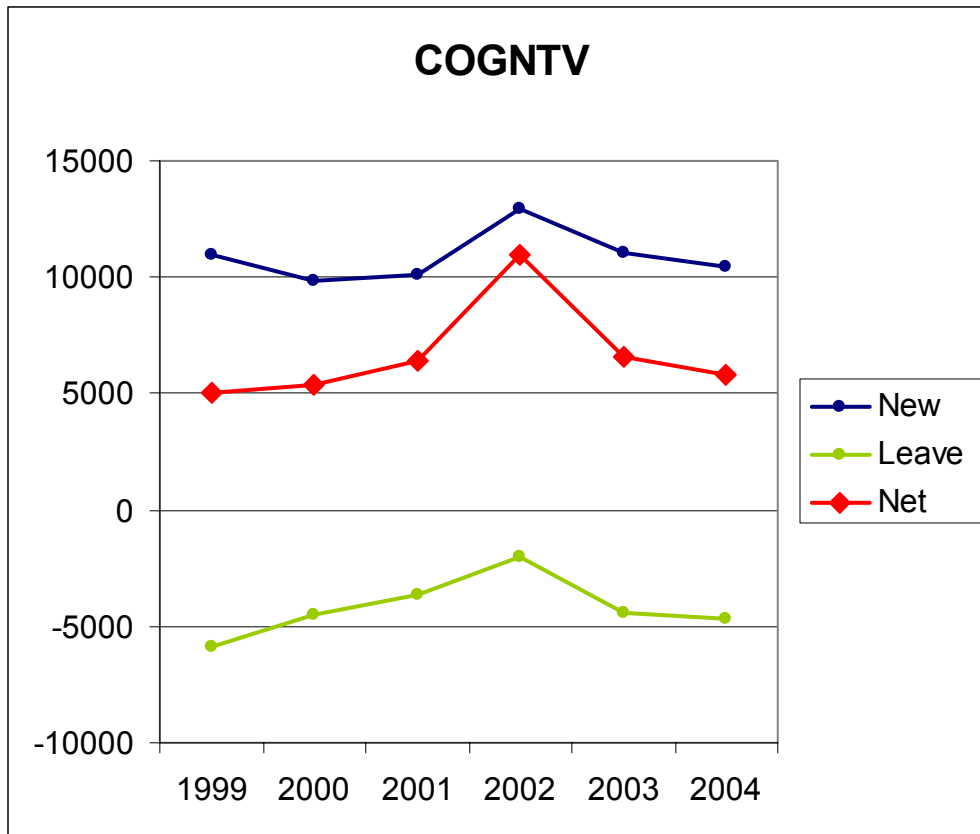
	New	Leave	Net	Net %
1999	11,117	-5,948	5,169	5.91%
2000	9,985	-4,504	5,481	5.92%
2001	10,276	-3,715	6,561	6.69%
2002	13,376	-2,061	11,315	10.82%
2003	11,314	-4,532	6,782	5.85%
2004	10,798	-4,736	6,062	4.94%

EMOTE: GRAPH AND TABLE



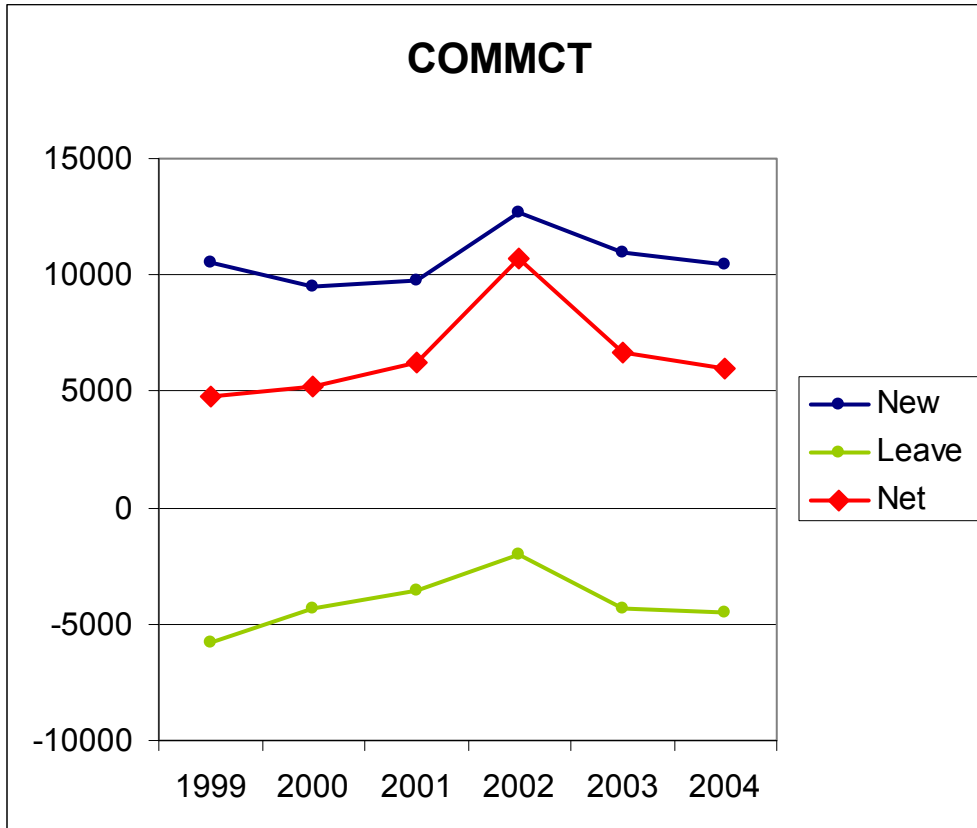
	New	Leave	Net	Net %
1999	14,578	-8,094	6,484	5.18%
2000	12,645	-5,949	6,696	5.09%
2001	12,580	-4,909	7,671	5.54%
2002	16,559	-2,521	14,038	9.61%
2003	13,099	-5,817	7,282	4.55%
2004	12,038	-6,226	5,812	3.47%

COGNTV: GRAPH AND TABLE



	New	Leave	Net	Net %
1999	10,931	-5,911	5,020	5.65%
2000	9,859	-4,493	5,366	5.72%
2001	10,101	-3,679	6,422	6.47%
2002	12,961	-2,009	10,952	10.37%
2003	11,016	-4,398	6,618	5.68%
2004	10,470	-4,694	5,776	4.69%

COMMCT: GRAPH AND TABLE



	New	Leave	Net	Net %
1999	10,568	-5,827	4,741	5.47%
2000	9,528	-4,314	5,214	5.70%
2001	9,796	-3,564	6,232	6.45%
2002	12,714	-2,001	10,713	10.41%
2003	10,988	-4,300	6,688	5.89%
2004	10,454	-4,513	5,941	4.94%

RESIDENCE: SUMMARY TABLES

New

	1999	2000	2001	2002	2003	2004
COMM	1,281	884	750	1,095	685	605
HOME	11,622	10,644	10,902	14,110	11,657	10,828
ICF	239	106	80	129	77	67
INLV	1,232	824	659	981	505	380
OTHER	115	127	140	185	136	129
SNF	89	60	49	59	39	29

Leave

	1999	2000	2001	2002	2003	2004
COMM	-934	-673	-423	-142	-490	-480
HOME	-5,694	-4,327	-3,666	-2,024	-4,365	-4,794
ICF	-262	-166	-149	-95	-176	-182
INLV	-884	-520	-447	20	-454	-456
OTHER	-89	-93	-70	-95	-142	-107
SNF	-231	-170	-154	-185	-190	-207

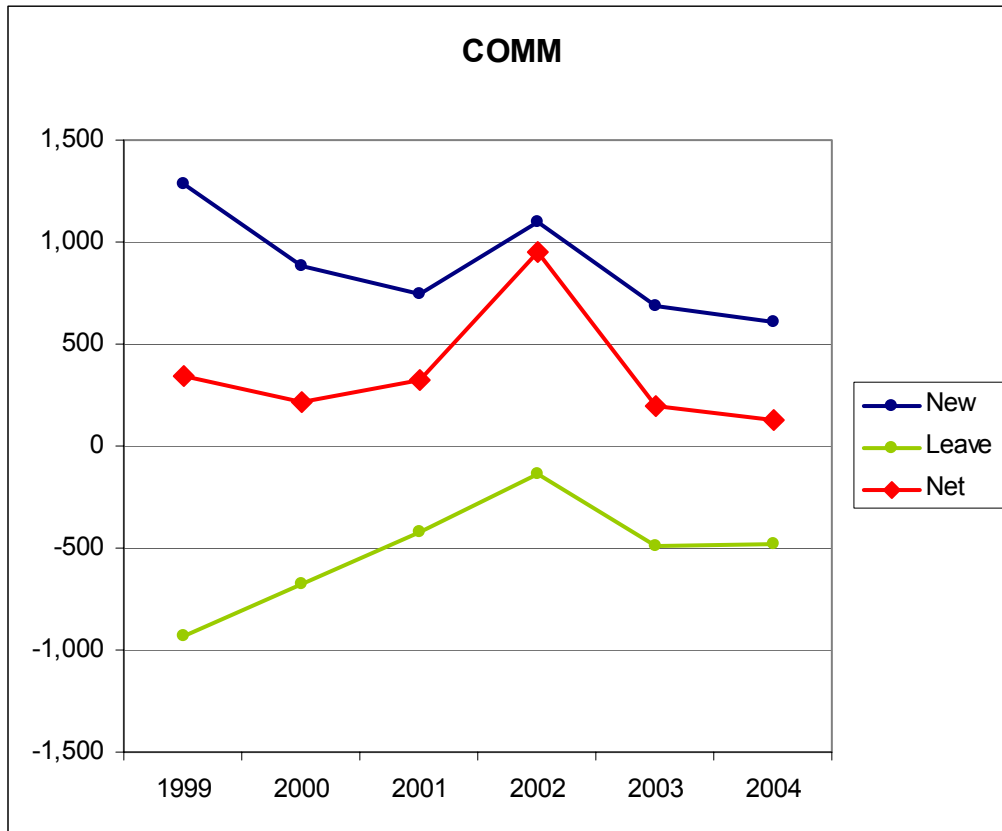
Net

	1999	2000	2001	2002	2003	2004
COMM	347	211	327	953	195	125
HOME	5,928	6,317	7,236	12,086	7,292	6,034
ICF	-23	-60	-69	34	-99	-115
INLV	348	304	212	1,001	51	-76
OTHER	26	34	70	90	-6	22
SNF	-142	-110	-105	-126	-151	-178

Net Percent (change from previous year's total)

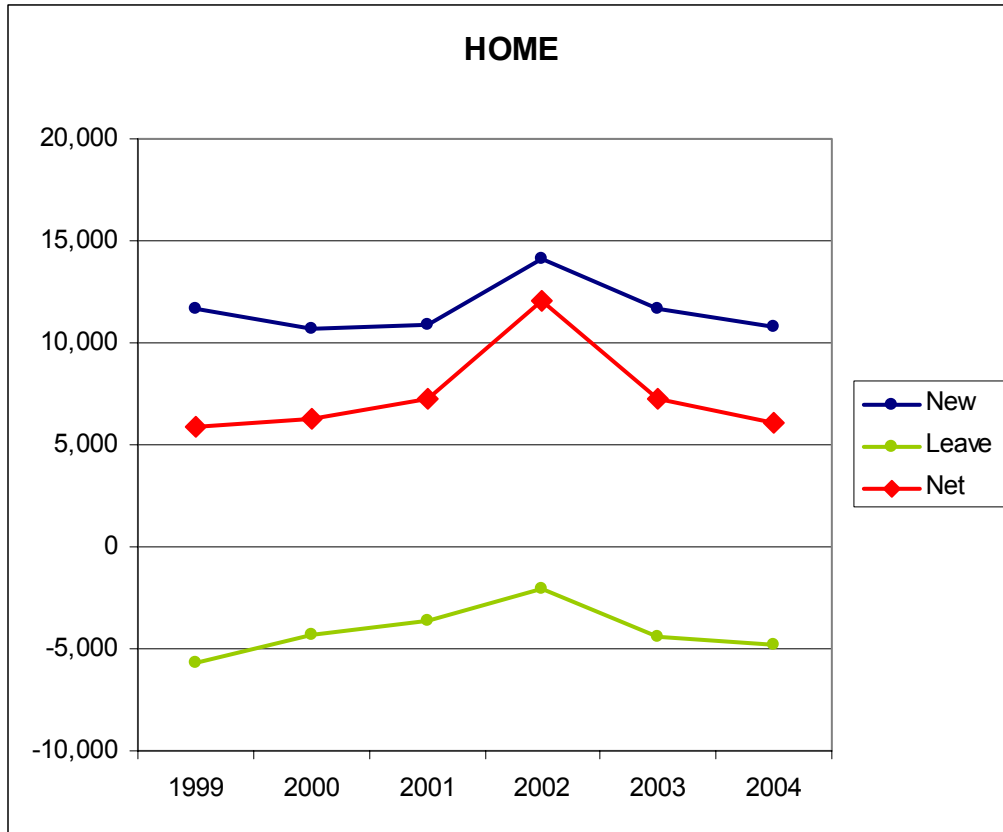
	1999	2000	2001	2002	2003	2004
COMM	1.52%	0.91%	1.40%	4.01%	0.79%	0.50%
HOME	7.79%	7.70%	8.19%	12.65%	6.77%	5.25%
ICF	-0.30%	-0.79%	-0.91%	0.45%	-1.32%	-1.55%
INLV	2.25%	1.92%	1.32%	6.13%	0.29%	-0.44%
OTHER	3.00%	3.81%	7.56%	9.04%	-0.55%	2.04%
SNF	-6.27%	-5.19%	-5.22%	-6.61%	-8.48%	-10.93%

COMM: GRAPH AND TABLE



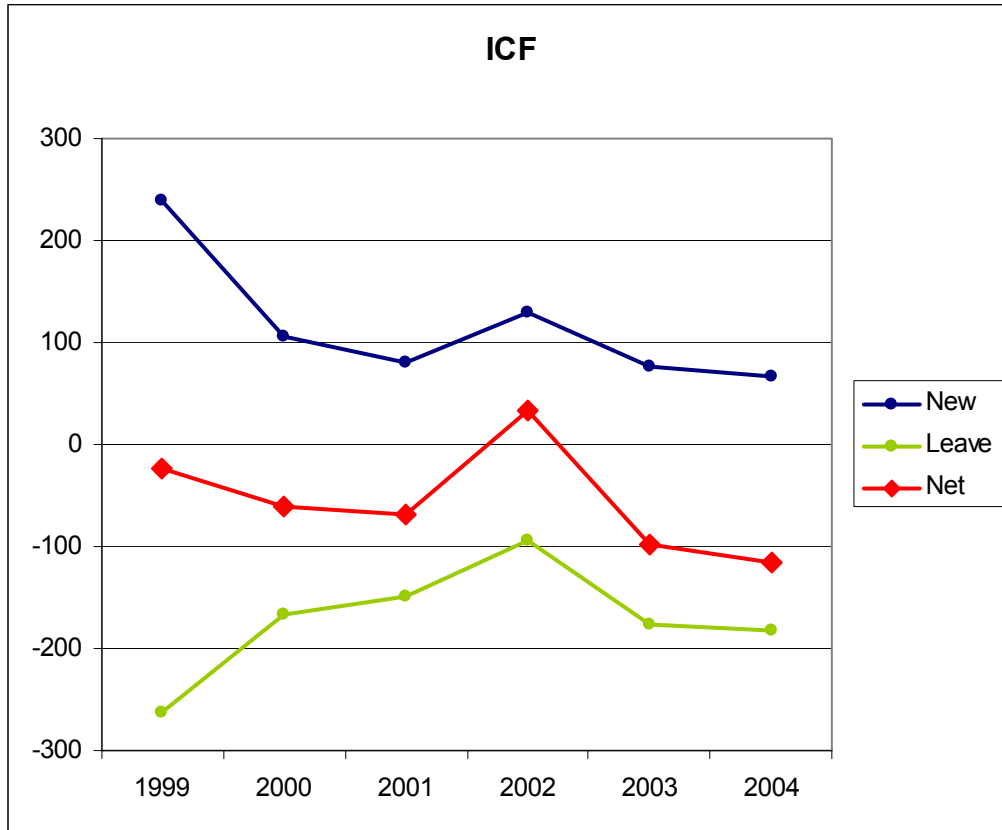
	New	Leave	Net	Net %
1999	1,281	-934	347	1.52%
2000	884	-673	211	0.91%
2001	750	-423	327	1.40%
2002	1,095	-142	953	4.01%
2003	685	-490	195	0.79%
2004	605	-480	125	0.50%

HOME: GRAPH AND TABLE



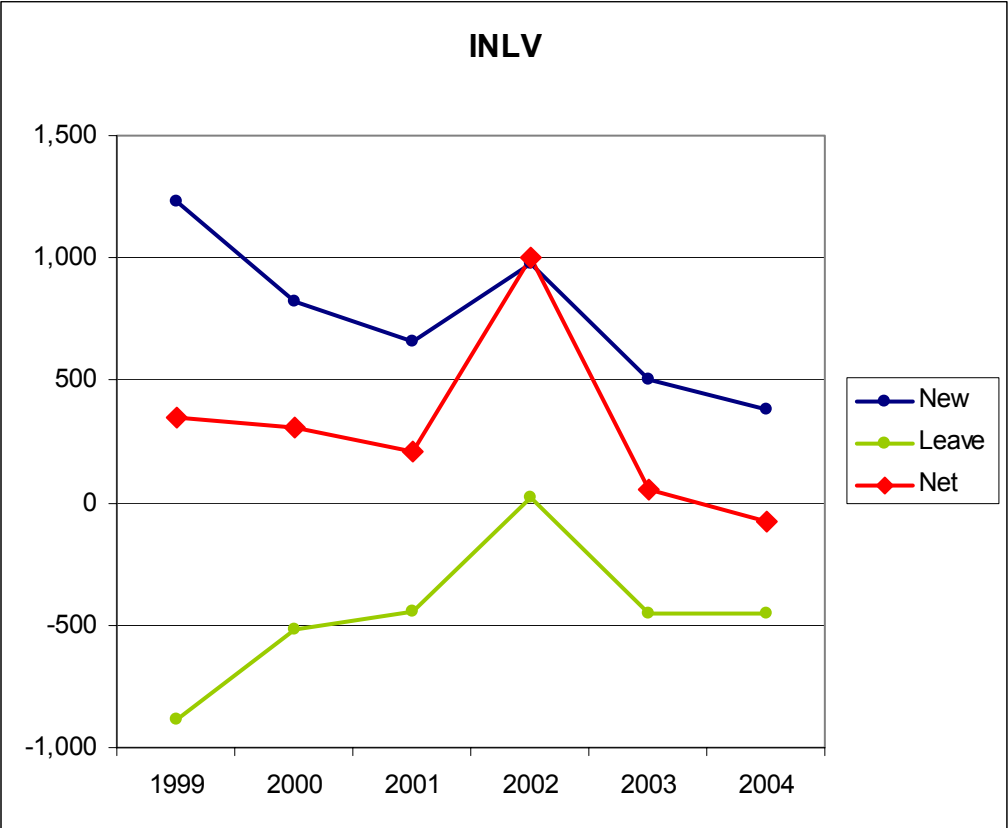
	New	Leave	Net	Net %
1999	11,622	-5,694	5,928	7.79%
2000	10,644	-4,327	6,317	7.70%
2001	10,902	-3,666	7,236	8.19%
2002	14,110	-2,024	12,086	12.65%
2003	11,657	-4,365	7,292	6.77%
2004	10,828	-4,794	6,034	5.25%

ICF: GRAPH AND TABLE



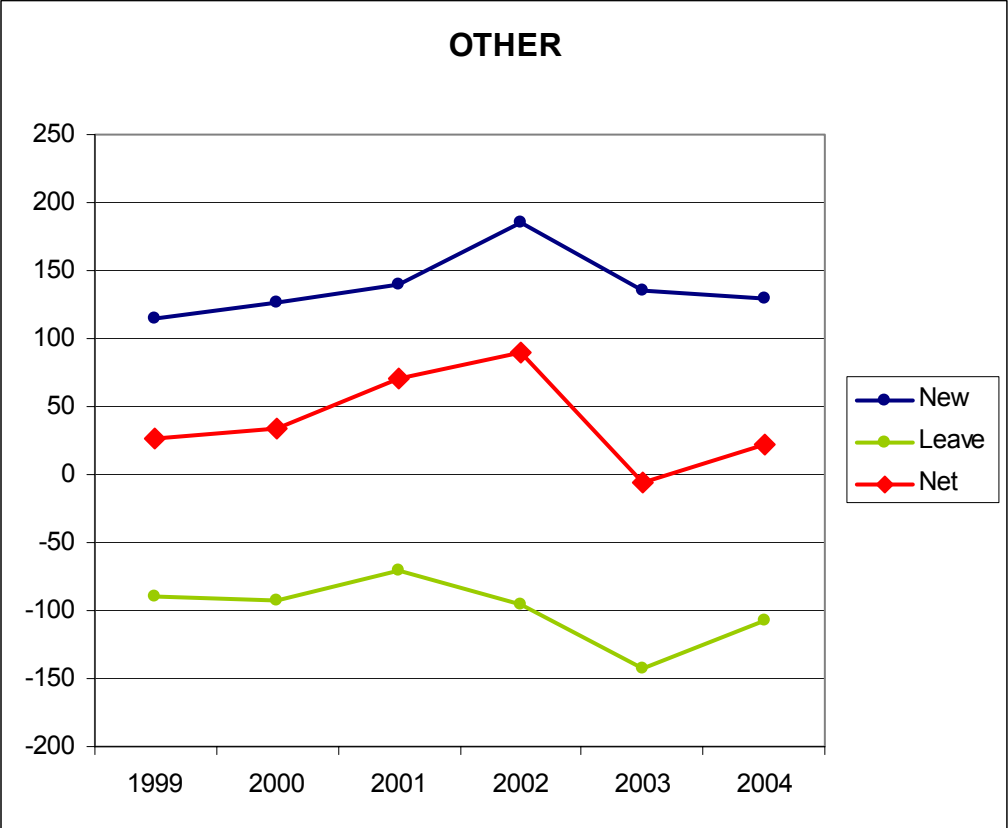
	New	Leave	Net	Net %
1999	239	-262	-23	-0.30%
2000	106	-166	-60	-0.79%
2001	80	-149	-69	-0.91%
2002	129	-95	34	0.45%
2003	77	-176	-99	-1.32%
2004	67	-182	-115	-1.55%

INLV: GRAPH AND TABLE



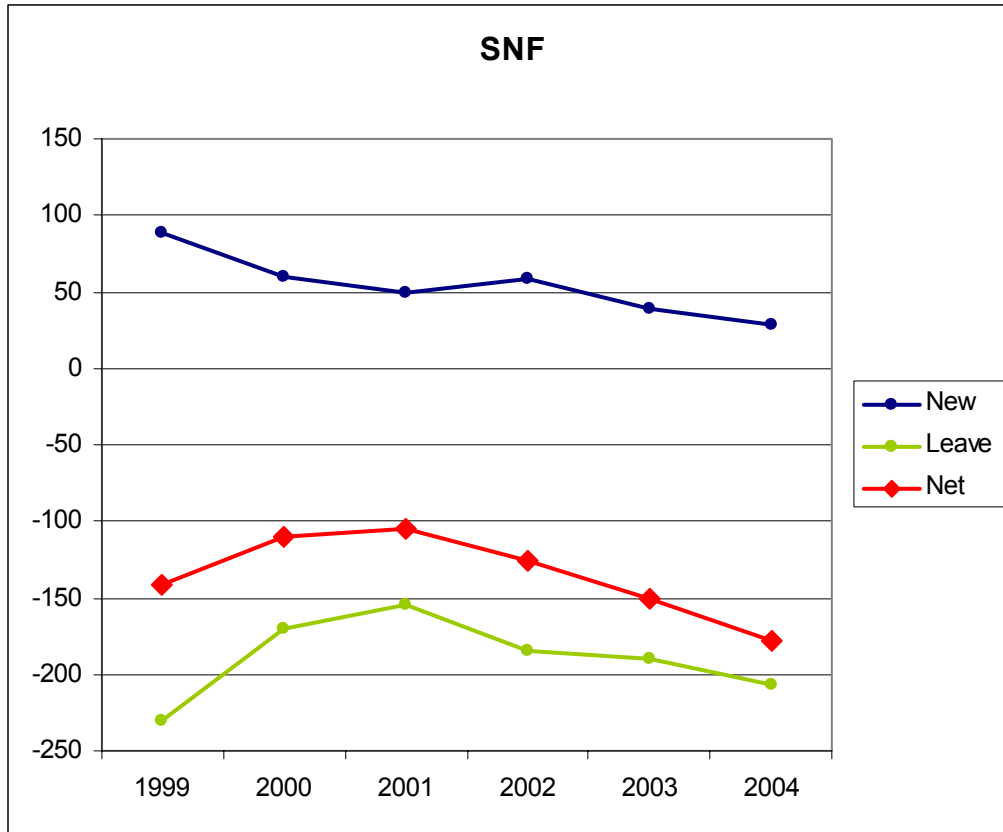
	New	Leave	Net	Net %
1999	1,232	-884	348	2.25%
2000	824	-520	304	1.92%
2001	659	-447	212	1.32%
2002	981	20	1,001	6.13%
2003	505	-454	51	0.29%
2004	380	-456	-76	-0.44%

OTHER: GRAPH AND TABLE



	New	Leave	Net	Net %
1999	115	-89	26	3.00%
2000	127	-93	34	3.81%
2001	140	-70	70	7.56%
2002	185	-95	90	9.04%
2003	136	-142	-6	-0.55%
2004	129	-107	22	2.04%

SNF: GRAPH AND TABLE



	New	Leave	Net	Net %
1999	89	-231	-142	-6.27%
2000	60	-170	-110	-5.19%
2001	49	-154	-105	-5.22%
2002	59	-185	-126	-6.61%
2003	39	-190	-151	-8.48%
2004	29	-207	-178	-10.93%

AGE: SUMMARY TABLES

New

	1999	2000	2001	2002	2003	2004
00-17	9,791	9,291	9,686	1,1353	10,220	9,492
18-21	1,315	1,116	1,012	1,798	1,051	922
22-99	3,472	2,238	1,882	3,408	1,828	1,624

Leave

	1999	2000	2001	2002	2003	2004
00-17	-4,079	-3,235	-2,705	-1,389	-3,248	-3,728
18-21	-738	-523	-437	-191	-557	-510
22-99	-3,277	-2,191	-1,767	-941	-2,012	-1,988

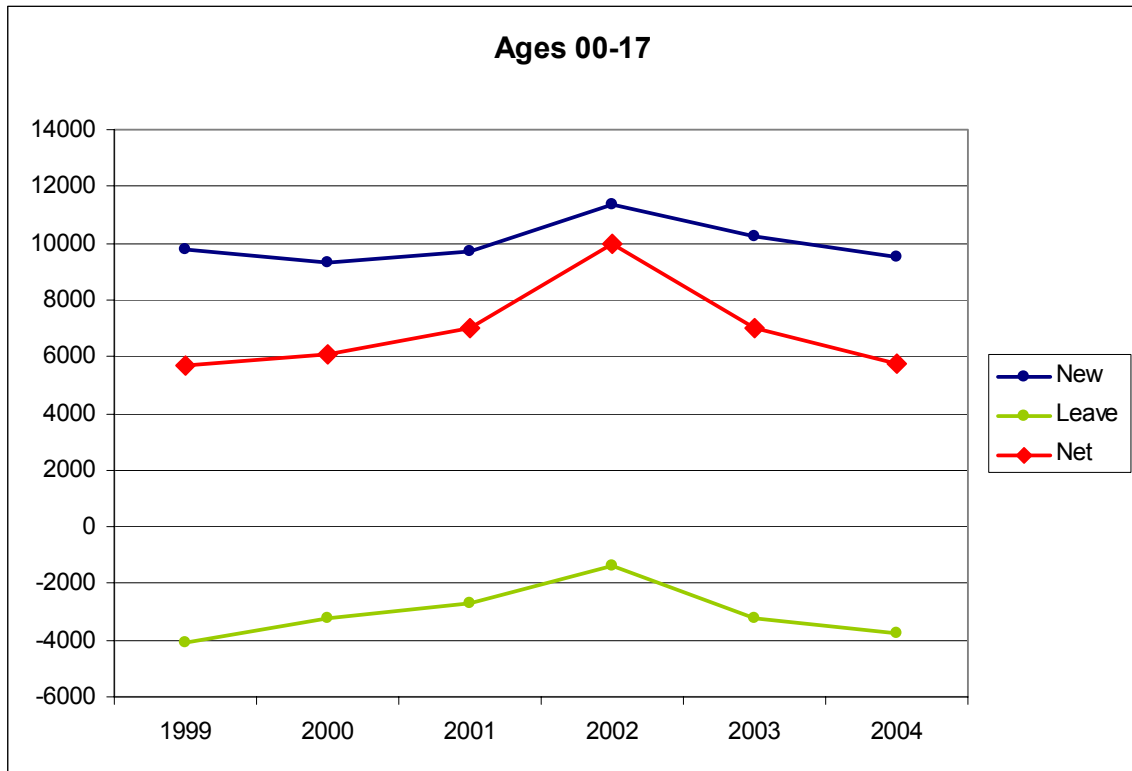
Net

	1999	2000	2001	2002	2003	2004
00-17	5,712	6,056	6,981	9,964	6,972	5,764
18-21	577	593	575	1,607	494	412
22-99	195	47	115	2,467	-184	-364

Net Percent (change from previous year's total)

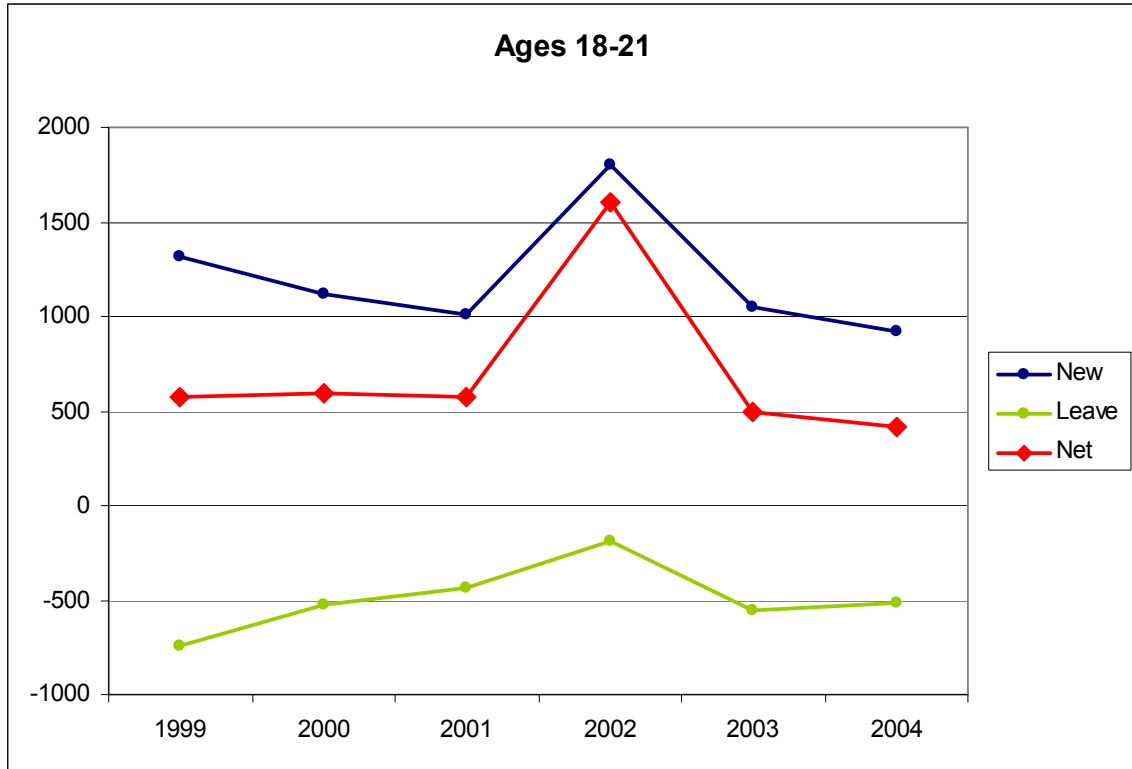
	1999	2000	2001	2002	2003	2004
00-17	11.5%	10.9%	11.3%	14.5%	8.9%	6.7%
18-21	5.5%	5.4%	4.9%	13.2%	3.6%	2.9%
22-99	0.3%	0.1%	0.2%	3.8%	-0.3%	-0.5%

0-17 YEARS OLD: GRAPH AND TABLE



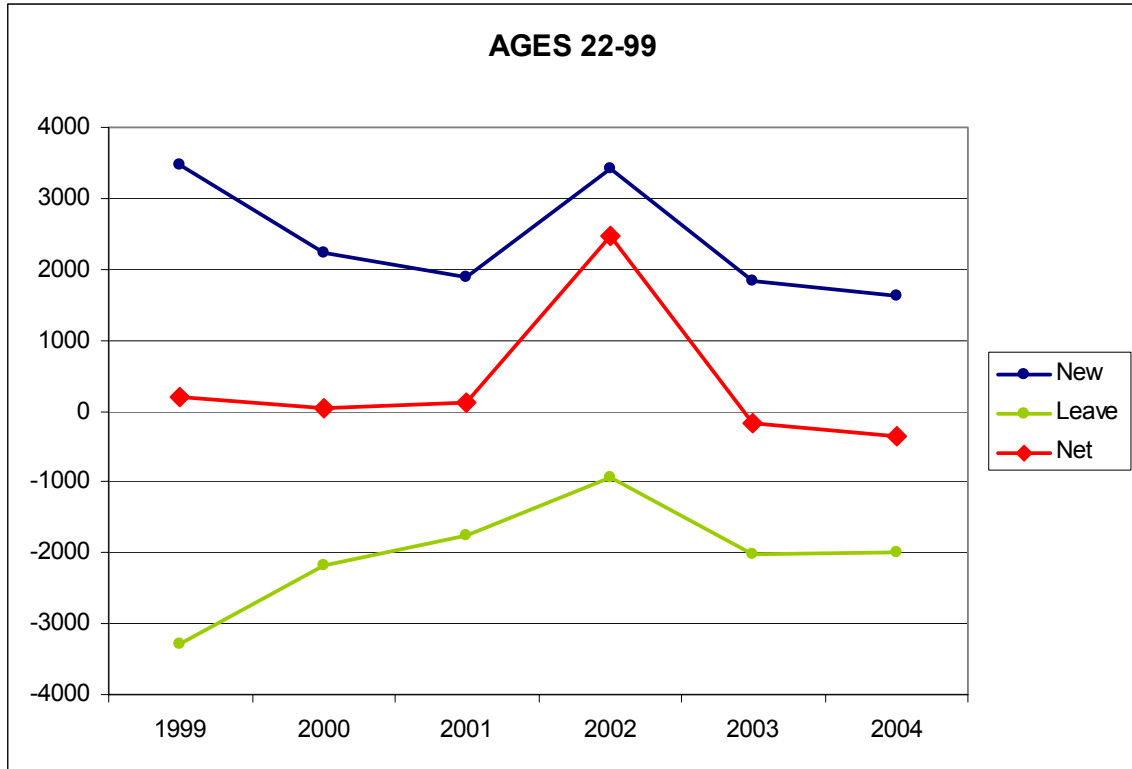
	New	Leave	Net	Net %
1999	9,791	-4,079	5,712	11.5%
2000	9,291	-3,235	6,056	10.9%
2001	9,686	-2,705	6,981	11.3%
2002	11,353	-1,389	9,964	14.5%
2003	10,220	-3,248	6,972	8.9%
2004	9,492	-3,728	5,764	6.7%

18-21 YEARS OLD: GRAPH AND TABLE



	New	Leave	Net	Net %
1999	1,315	-738	577	5.5%
2000	1,116	-523	593	5.4%
2001	1,012	-437	575	4.9%
2002	1,798	-191	1,607	13.2%
2003	1,051	-557	494	3.6%
2004	922	-510	412	2.9%

22-99 YEARS OLD: GRAPH AND TABLE



	New	Leave	Net	Net %
1999	3,472	-3,277	195	0.3%
2000	2,238	-2,191	47	0.1%
2001	1,882	-1,767	115	0.2%
2002	3,408	-941	2,467	3.8%
2003	1,828	-2,012	-184	-0.3%
2004	1,624	-1,988	-364	-0.5%

REGIONAL CENTER: SUMMARY TABLES

ACRC	New	%	Leave	%	Net	%
1999	1,097	11%	988	9.6%	109	1.1%
2000	1,026	10%	766	7.3%	260	2.5%
2001	1,013	9%	763	7.1%	250	2.3%
2002	1,233	11%	684	6.2%	549	5.0%
2003	1,146	10%	907	7.9%	239	2.1%
2004	1,132	10%	1,047	8.9%	85	0.7%

CVRC	New	%	Leave	%	Net	%
1999	926	10%	586	6.5%	340	3.7%
2000	1,092	12%	564	6.0%	528	5.6%
2001	1,116	11%	583	5.9%	533	5.4%
2002	1,220	12%	664	6.3%	556	5.3%
2003	1,470	13%	844	7.6%	626	5.7%
2004	1,434	12%	1,016	8.7%	418	3.6%

ELARC	New	%	Leave	%	Net	%
1999	670	15%	416	9.1%	254	5.6%
2000	652	14%	374	7.8%	278	5.8%
2001	616	12%	369	7.2%	247	4.8%
2002	778	15%	329	6.2%	449	8.4%
2003	731	13%	399	6.9%	332	5.7%
2004	815	13%	450	7.3%	365	6.0%

FDLRC	New	%	Leave	%	Net	%
1999	446	10%	312	7.3%	134	3.1%
2000	574	13%	302	6.9%	272	6.2%
2001	582	12%	223	4.8%	359	7.7%
2002	689	14%	307	6.1%	382	7.6%
2003	749	14%	398	7.3%	351	6.5%
2004	787	14%	410	7.1%	377	6.5%

FNRC	New	%	Leave	%	Net	%
1999	413	10%	344	8.0%	69	1.6%
2000	420	10%	317	7.3%	103	2.4%
2001	459	10%	277	6.2%	182	4.1%
2002	394	8%	334	7.2%	60	1.3%
2003	458	10%	336	7.1%	122	2.6%
2004	455	9%	354	7.3%	101	2.1%

GGRC	New	%	Leave	%	Net	%
1999	528	10%	413	8.2%	115	2.3%
2000	519	10%	369	7.2%	150	2.9%
2001	491	9%	461	8.7%	30	0.6%
2002	659	12%	439	8.2%	220	4.1%
2003	787	14%	449	8.1%	338	6.1%
2004	843	14%	550	9.3%	293	5.0%

HRC	New	%	Leave	%	Net	%
1999	908	14%	688	10.8%	220	3.4%
2000	940	14%	628	9.5%	312	4.7%
2001	1,098	16%	660	9.6%	438	6.3%
2002	1,221	17%	660	9.0%	561	7.6%
2003	1,044	13%	814	10.3%	230	2.9%
2004	1,017	12%	860	10.6%	157	1.9%

IRC	New	%	Leave	%	Net	%
1999	1,592	11%	1,224	8.1%	368	2.4%
2000	1,645	11%	1,054	6.8%	591	3.8%
2001	1,690	11%	1,088	6.8%	602	3.8%
2002	1,680	10%	1,143	6.9%	537	3.2%
2003	1,589	9%	1,184	6.9%	405	2.4%
2004	1,742	10%	1,277	7.3%	465	2.7%

KRC	New	%	Leave	%	Net	%
1999	394	9%	415	10.0%	-21	-0.5%
2000	440	11%	344	8.3%	96	2.3%
2001	445	10%	311	7.3%	134	3.2%
2002	532	12%	301	6.9%	231	5.3%
2003	548	12%	312	6.8%	236	5.1%
2004	601	12%	402	8.3%	199	4.1%

NBRC	New	%	Leave	%	Net	%
1999	533	11%	483	9.7%	50	1.0%
2000	561	11%	469	9.3%	92	1.8%
2001	549	11%	475	9.3%	74	1.4%
2002	613	12%	488	9.4%	125	2.4%
2003	611	11%	464	8.7%	147	2.8%
2004	584	11%	508	9.3%	76	1.4%

NLARC	New	%	Leave	%	Net	%
1999	1,263	14%	787	8.9%	476	5.4%
2000	1,229	13%	743	8.0%	486	5.2%
2001	1,353	14%	684	7.0%	669	6.8%
2002	1,491	14%	909	8.7%	582	5.6%
2003	1,378	12%	895	8.1%	483	4.4%
2004	1,454	13%	1,017	8.8%	437	3.8%

RCEB	New	%	Leave	%	Net	%
1999	930	10%	725	7.9%	205	2.2%
2000	932	10%	642	6.8%	290	3.1%
2001	1,326	14%	794	8.2%	532	5.5%
2002	1,355	13%	831	8.1%	524	5.1%
2003	1,326	12%	955	8.9%	371	3.5%
2004	1,240	11%	915	8.2%	325	2.9%

RCOC	New	%	Leave	%	Net	%
1999	1,348	13.87%	893	9.19%	455	4.68%
2000	1,184	11.64%	826	8.12%	358	3.52%
2001	1,723	16.36%	848	8.05%	875	8.31%
2002	1,787	15.67%	1081	9.48%	706	6.19%
2003	1,947	16.07%	1324	10.93%	623	5.14%
2004	1,988	15.61%	1541	12.10%	447	3.51%

RCRC	New	%	Leave	%	Net	%
1999	190	9%	182	8.6%	8	0.4%
2000	200	9%	176	8.3%	24	1.1%
2001	214	10%	130	6.0%	84	3.9%
2002	221	10%	148	6.6%	73	3.3%
2003	217	9%	165	7.2%	52	2.3%
2004	227	10%	201	8.5%	26	1.1%

SARC	New	%	Leave	%	Net	%
1999	868	13%	595	8.6%	273	3.9%
2000	937	13%	579	8.1%	358	5.0%
2001	898	12%	635	8.4%	263	3.5%
2002	1,182	15%	632	8.1%	550	7.0%
2003	1,198	14%	693	8.3%	505	6.0%
2004	1,250	14%	789	8.9%	461	5.2%

SCLARC	New	%	Leave	%	Net	%
1999	753	11%	733	11.0%	20	0.3%
2000	834	13%	583	8.7%	251	3.8%
2001	759	11%	620	9.0%	139	2.0%
2002	871	12%	432	6.1%	439	6.2%
2003	964	13%	741	9.9%	223	3.0%
2004	911	12%	571	7.4%	340	4.4%

SDRC	New	%	Leave	%	Net	%
1999	1,227	11%	917	8.0%	310	2.7%
2000	1,561	13%	890	7.6%	671	5.7%
2001	1,494	12%	1,127	9.1%	367	3.0%
2002	1,654	13%	954	7.5%	700	5.5%
2003	1,504	11%	1,249	9.2%	255	1.9%
2004	1,723	13%	1,298	9.4%	425	3.1%

SG-PRC	New	%	Leave	%	Net	%
1999	651	9%	370	5.2%	281	4.0%
2000	719	10%	419	5.7%	300	4.1%
2001	787	10%	381	5.0%	406	5.3%
2002	847	10%	488	6.0%	359	4.4%
2003	819	10%	541	6.4%	278	3.3%
2004	962	11%	633	7.3%	329	3.8%

TCRC	New	%	Leave	%	Net	%
1999	795	12%	683	10.0%	112	1.6%
2000	863	12%	565	8.1%	298	4.3%
2001	1,026	14%	643	8.9%	383	5.3%
2002	985	13%	733	9.6%	252	3.3%
2003	1,043	13%	883	11.2%	160	2.0%
2004	1,090	14%	790	9.8%	300	3.7%

VMRC	New	%	Leave	%	Net	%
1999	677	10%	593	9.0%	84	1.3%
2000	791	12%	546	8.1%	245	3.7%
2001	835	12%	630	9.1%	205	3.0%
2002	860	12%	567	7.9%	293	4.1%
2003	941	13%	566	7.6%	375	5.0%
2004	869	11%	632	8.1%	237	3.0%

WRC	New	%	Leave	%	Net	%
1999	565	13%	353	8.4%	212	5.0%
2000	708	16%	456	10.3%	252	5.7%
2001	649	14%	404	8.6%	245	5.2%
2002	817	17%	361	7.3%	456	9.2%
2003	831	15%	441	8.2%	390	7.2%
2004	793	14%	579	10.0%	214	3.7%

STATUS CHANGE FOR ALL REGIONAL CENTERS

Status Code Legend

0 = Diag and Evaluation

1 = High-Risk Infant

2 = Active Client

3 = At-Risk (Mother)

4 = Inactive

5 = Closed Transfer

6 = Closed not DD

7 = Closed Deceased

8 = Dev Center Client

9,X = Closed Other

S = Closed - Out of State

D = Closed - Not Determined

Group Leave = sum Status 4+5+6+7+9+S+D+X

ALL REGIONAL CENTERS

2004	0	1	2	3	4	5	6	7	8	9	D	S	Grand Total	Group Leave
1	158	8,163	2,894	1	1,536	26	5,589	116		1,158	1,467	268	21,376	10,160
2	7	14	151,370		4,021	180	568	1,319	80	619	12	884	159,074	7,603
Total	165	8,177	154,264	1	5,557	206	6,157	1,435	80	1,777	1,479	1,152	180,450	17,763

2003	0	1	2	3	4	5	6	7	8	9	D	S	X	Grand Total	Group Leave
1	139	7,916	3,157		1,541	45	5,375	102		1,318	801	211	1	20,606	9,394
2	11	20	146,061	1	3,762	176	473	1,202	101	604	9	682	1	153,103	6,909
Total	150	7,936	149,218	1	5,303	221	5,848	1,304	101	1,922	810	893	2	173,709	16,303

2002	0	1	2	3	4	5	6	7	8	9	D	S	X	Grand Total	Group Leave
1	129	7,829	2,888		1,237	46	4,229	87		1,186	563	130	2	18,326	7,480
2	11	23	140,063	1	3,393	166	391	1,279	113	734	5	595	5	146,779	6,568
Total	140	7,852	142,951	1	4,630	212	4,620	1,366	113	1,920	568	725	7	165,105	14,048

2001	0	1	2	3	4	5	6	7	8	9	D	S	X	Grand Total	Group Leave
1	86	6,999	2,932		1,338	46	4,289	127		1,050	478	144	2	17,491	7,474
2	14	19	134,514	1	2,925	208	383	1,084	101	751	7	583	7	140,597	5,948
Total	100	7,018	137,446	1	4,263	254	4,672	1,211	101	1,801	485	727	9	158,088	13,422

2000	0	1	2	3	4	5	6	7	8	9	D	S	X	Grand Total	Group Leave
1	54	7,197	2,639		1,283	74	3,568	117		813	152	69	10	15,976	6,086
2	11	34	129,496	2	3,199	374	374	1,132	118	840	4	300	13	135,897	6,236
Total	65	7,231	132,135	2	4,482	448	3,942	1,249	118	1,653	156	369	23	151,873	12,322

1999	0	1	2	3	4	5	6	7	8	9	Grand Total	Group Leave
1	24	6,544	2,486	6	1,291	64	3,613	120		843	14,991	5,931
2	17	30	126,039	1	3,754	210	438	1,035	126	1,158	132,808	6,595
Total	41	6,574	128,525	7	5,045	274	4,051	1,155	126	2,001	147,799	12,526