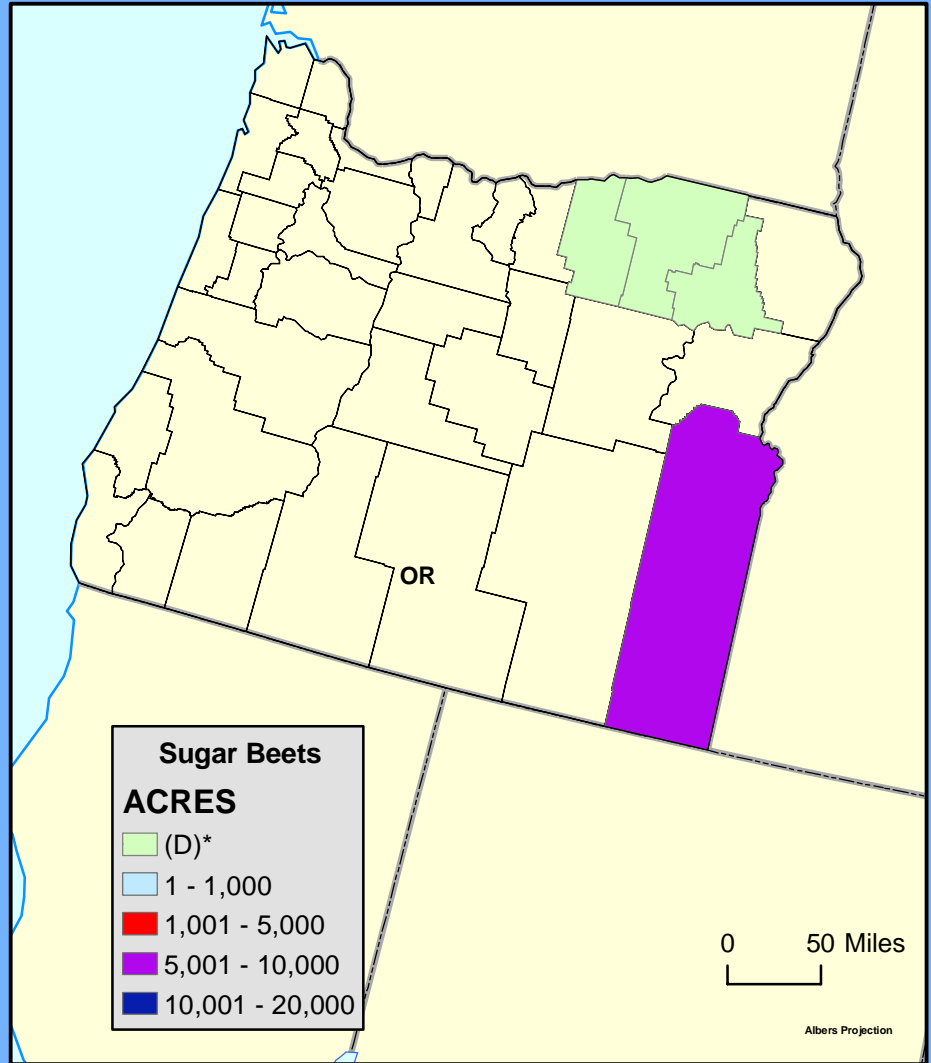


Sugar Contributes 0.4 percent to Oregon's \$3.3 billion Farm Income

	2003 Leading commodities for cash receipts in OR	Value of receipts 1000	Percent of total receipts
	All commodities	3,283,732	100
	Livestock and products	804,856	24.5
	Crops	2,478,876	75.5
1	Greenhouse/nursery	923,759	28.1
2	Cattle and calves	381,851	11.6
3	Dairy products	270,125	8.2
4	Hay	249,739	7.6
5	Ryegrass	160,761	4.9
6	Wheat	154,509	4.7
7	Potatoes	127,573	3.9
8	Onions	111,153	3.4
9	Fescue	80,431	2.4
10	Pears	62,494	1.9
11	Cherries	44,954	1.4
12	Chicken eggs	43,522	1.3
13	Hazelnuts (filberts)	38,831	1.2
14	Grapes	36,240	1.1
15	Corn, sweet	33,687	1
16	Mint	32,310	1
17	Blackberry group	31,831	1
18	Apples	25,617	0.8
19	Hops	21,686	0.7
20	Blueberries	20,786	0.6
21	Beans, snap	17,813	0.5
22	Cranberries	17096	0.5
23	Strawberries	14675	0.4
24	Bluegrass, kentucky	12,758	0.4
25	Sugar Beets	12,522	0.4



* (D) Withheld to avoid disclosing data for individual farms. (USDA-NASS)

Source: NASS 2002 Census of Agriculture - Volume 1 Geographic Area Series Census, State - County Data