

Figure III-25. Geologic Features in the Beaufort Sea and Chukchi Sea Planning Areas -- Arctic Subregion

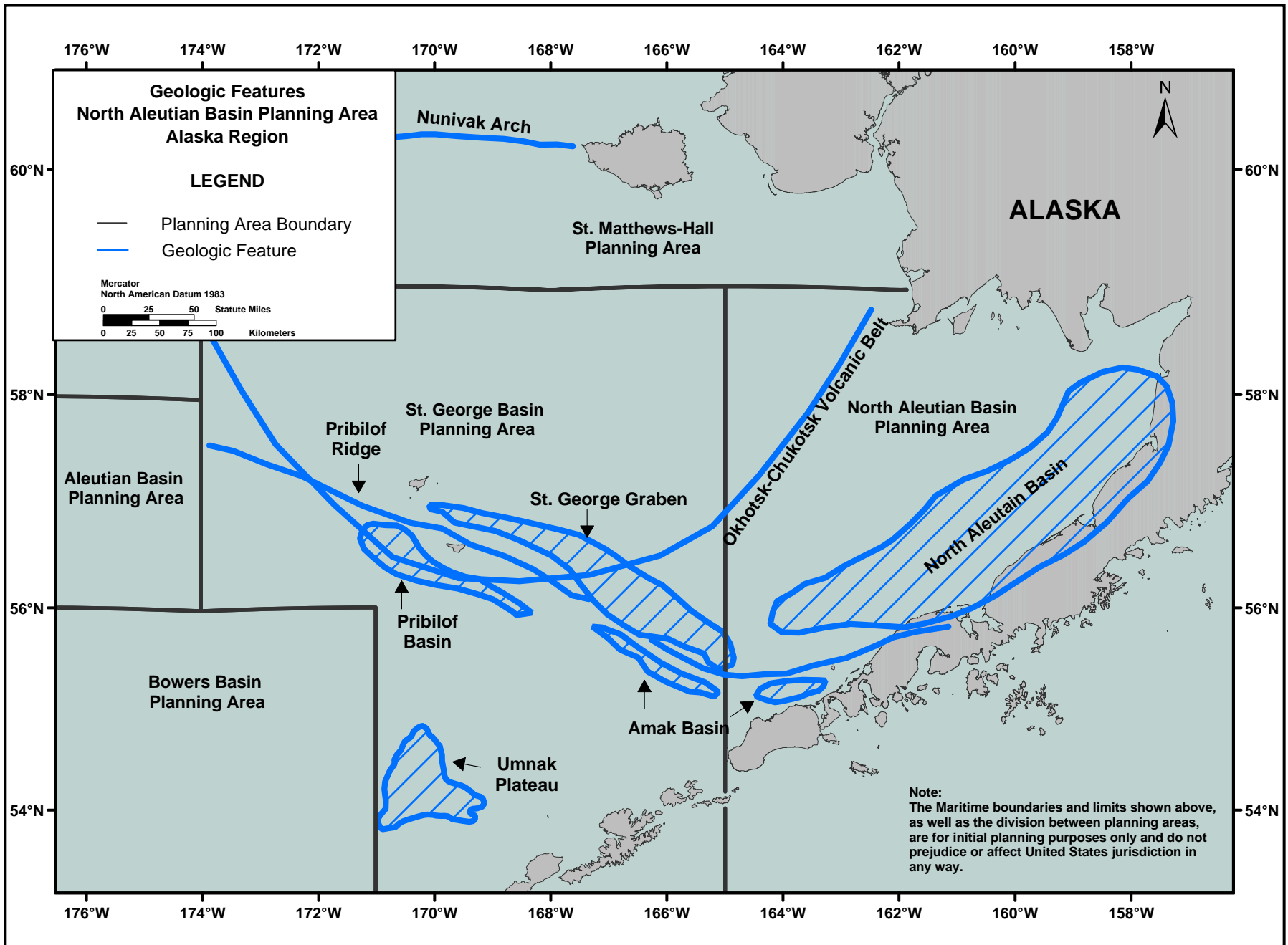


Figure III-26. Geologic Features in the North Aleutian Basin Planning Area -- Bering Sea Subregion

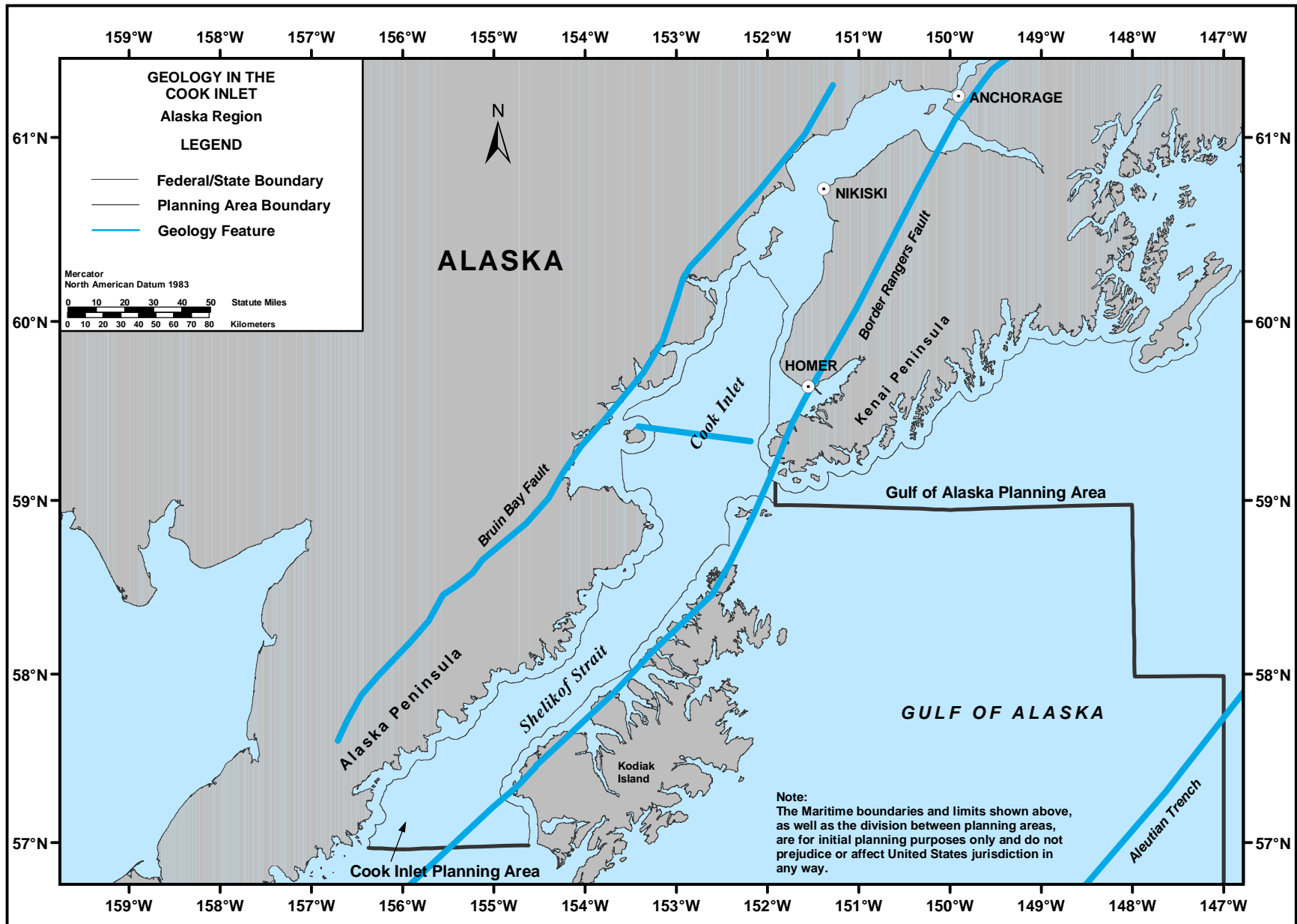


Figure III-27. Geologic Features in the Cook Inlet Planning Areas -- South Alaska Subregion

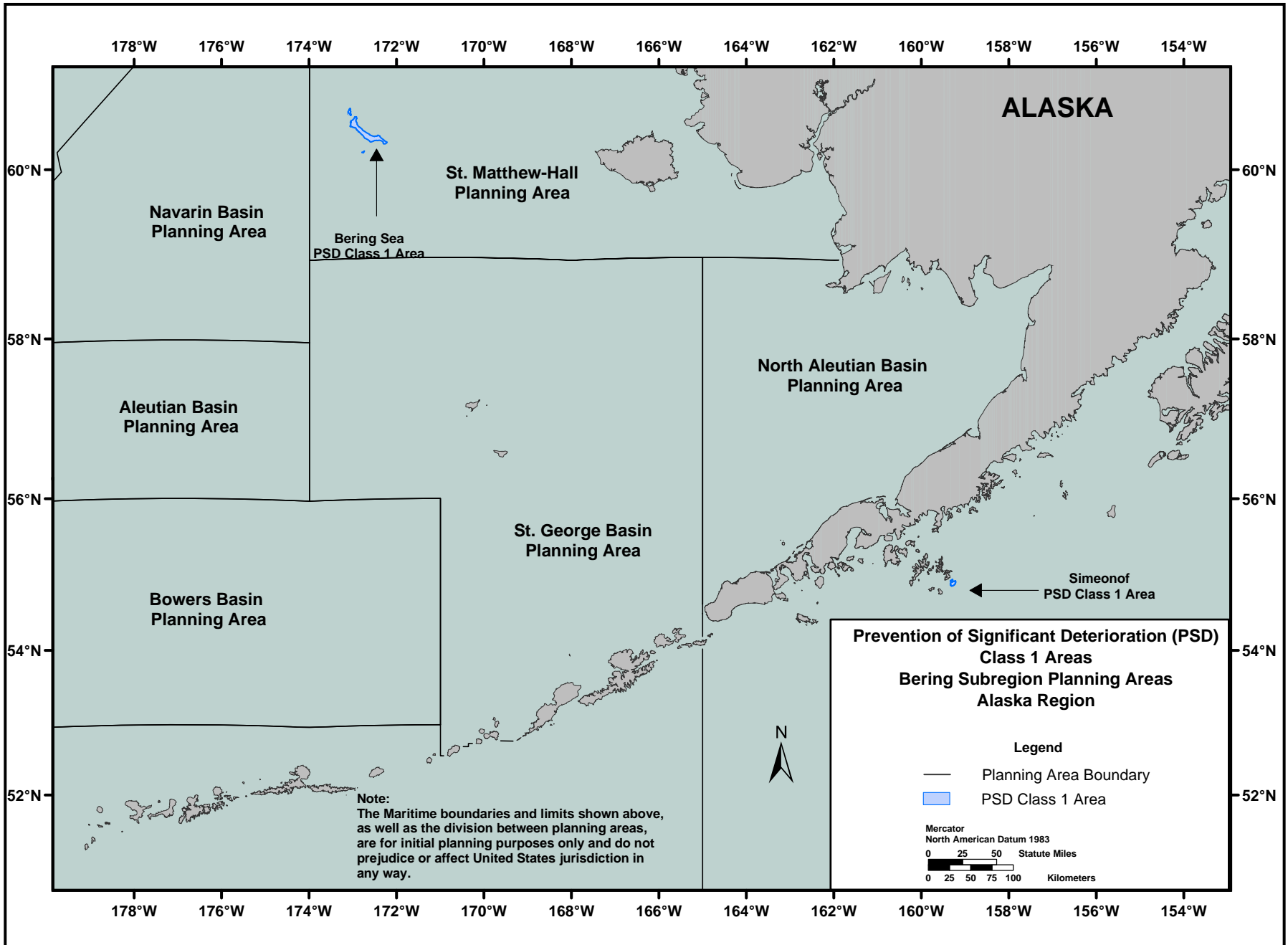


Figure III-28. PSD Class I Area in the Bering Sea Subregion

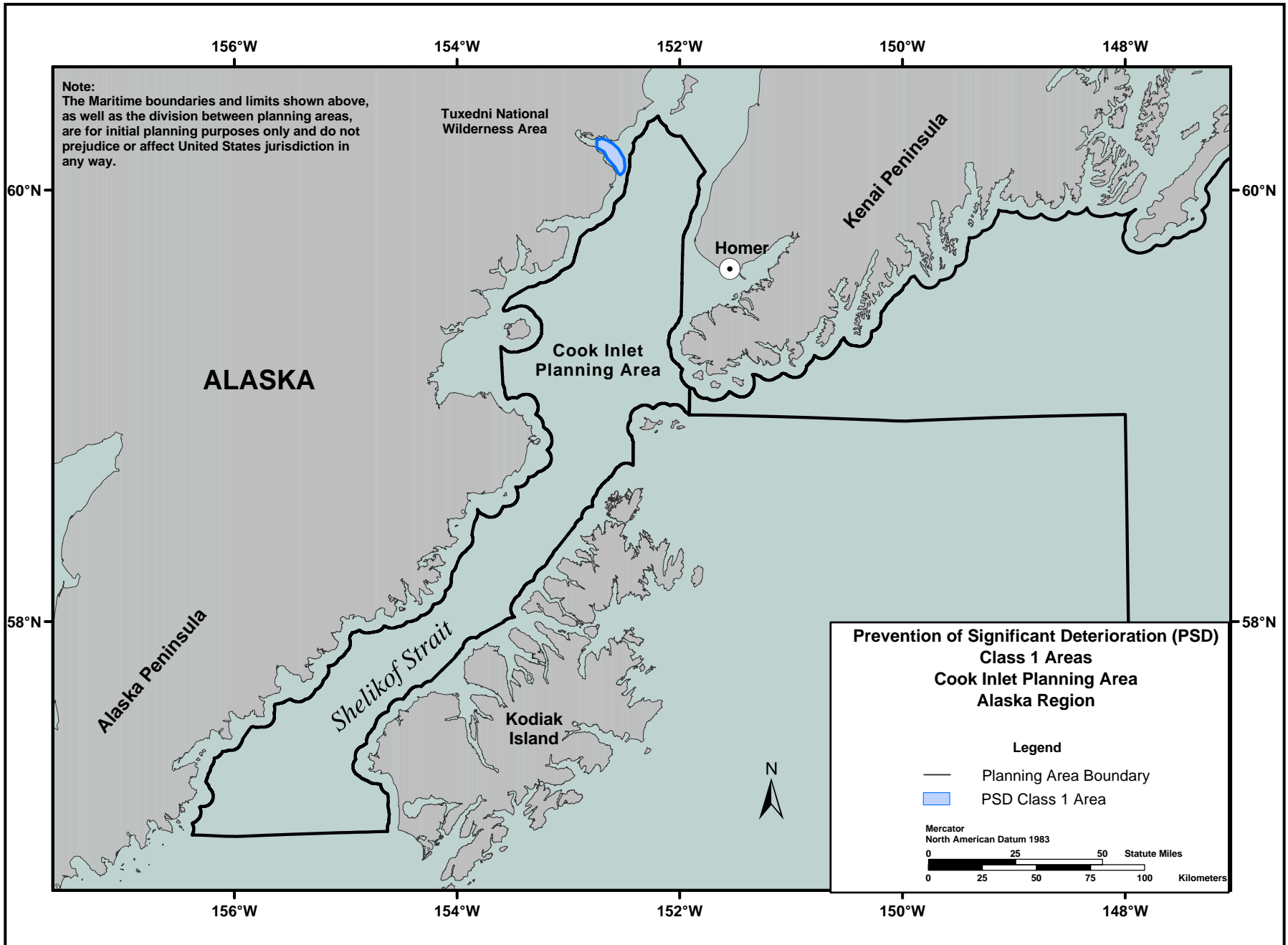


Figure III-29. PSD Class I Area in the Cook Inlet Planning Area -- South Alaska Subregion

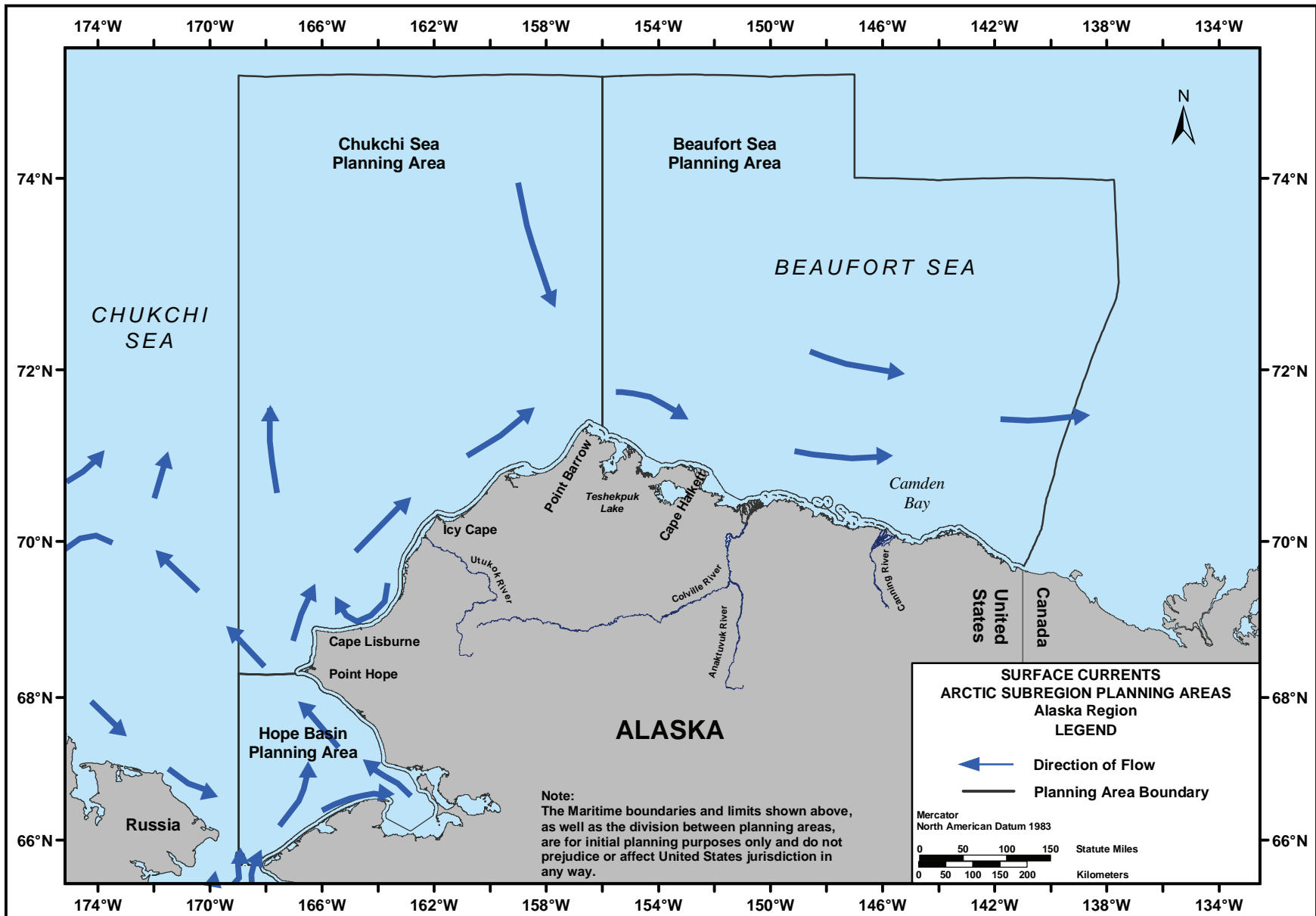


Figure III-30. Surface Currents -- Arctic Subregion

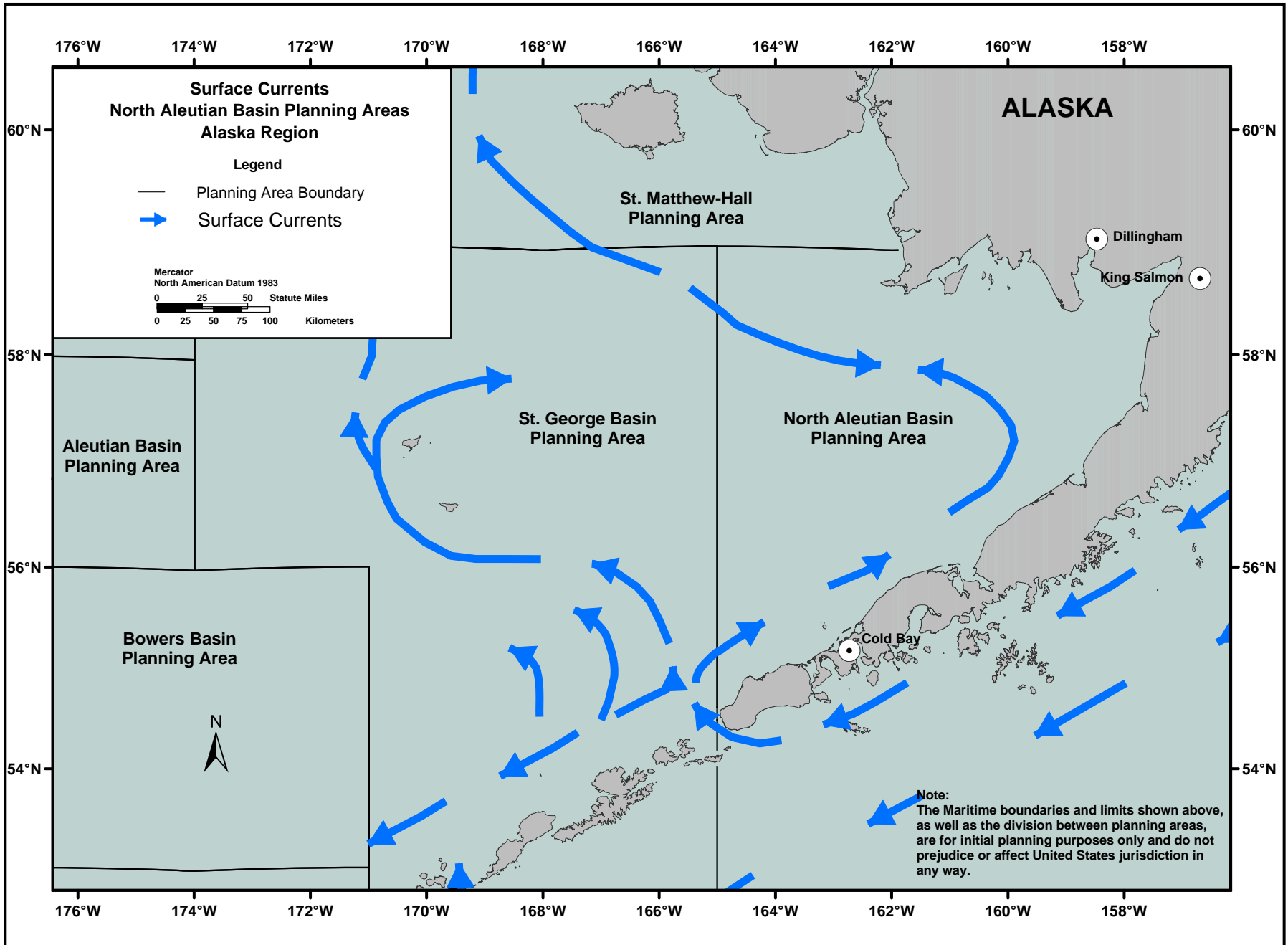


Figure III-31. Surface Currents in the North Aleutian Basin Planning Area -- Bering Sea Subregion

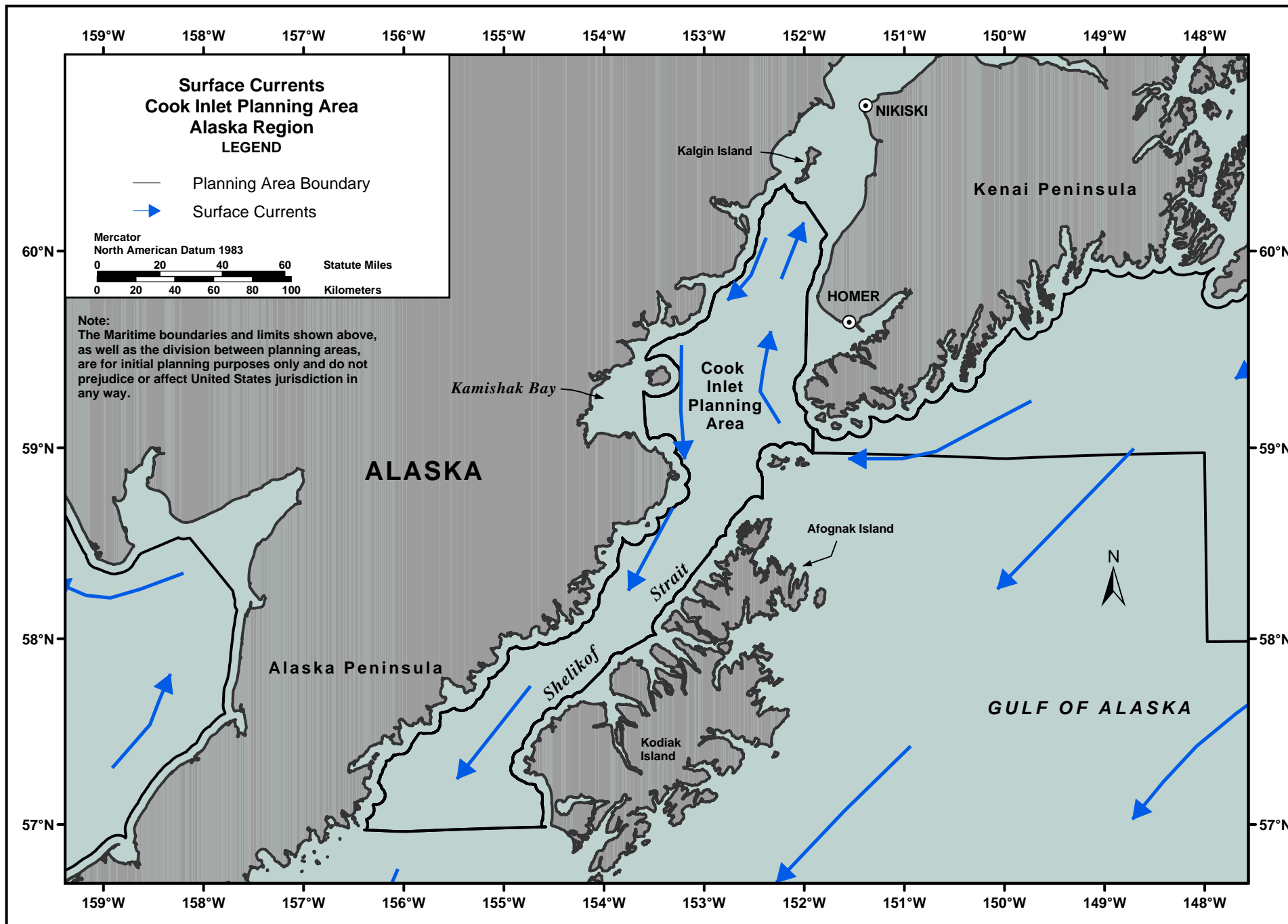


Figure III-32. Surface Currents in the Cook Inlet Planning Area -- South Alaska Subregion



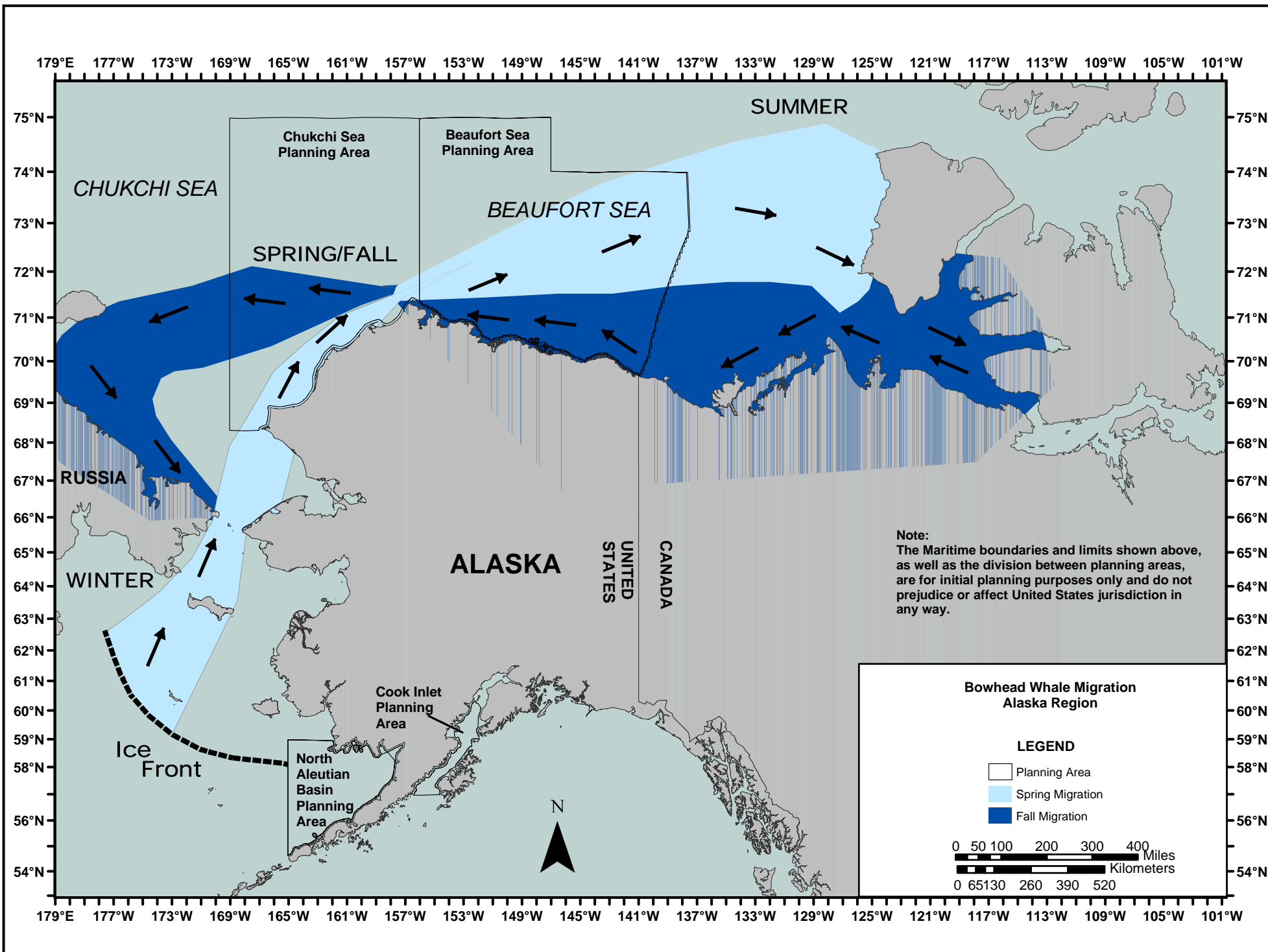


Figure III-33. General Bowhead Whale Migration Pattern -- Alaska

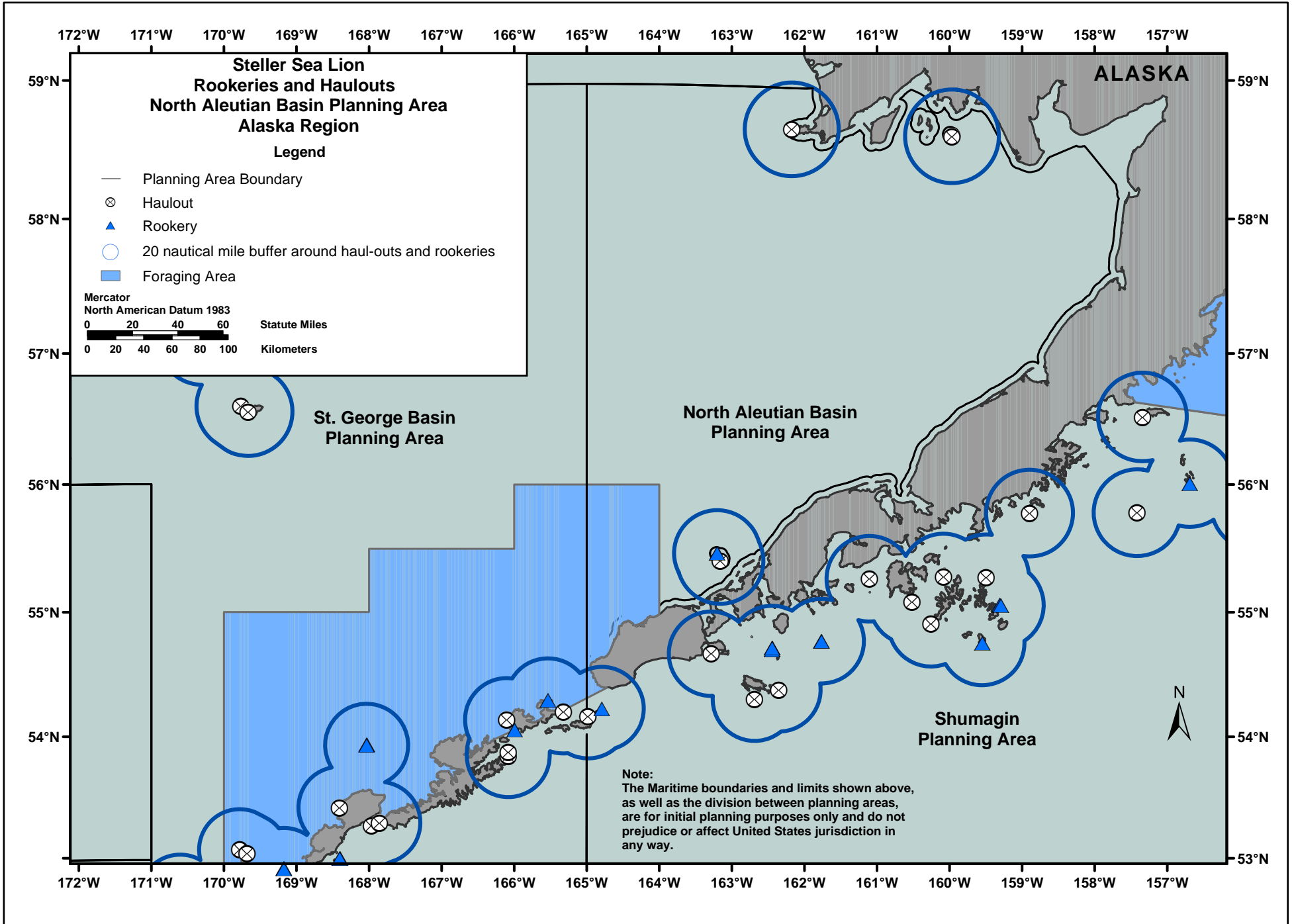


Figure III-34. Western Steller Sea Lion Rookeries and Haulouts -- Bering Sea Subregion

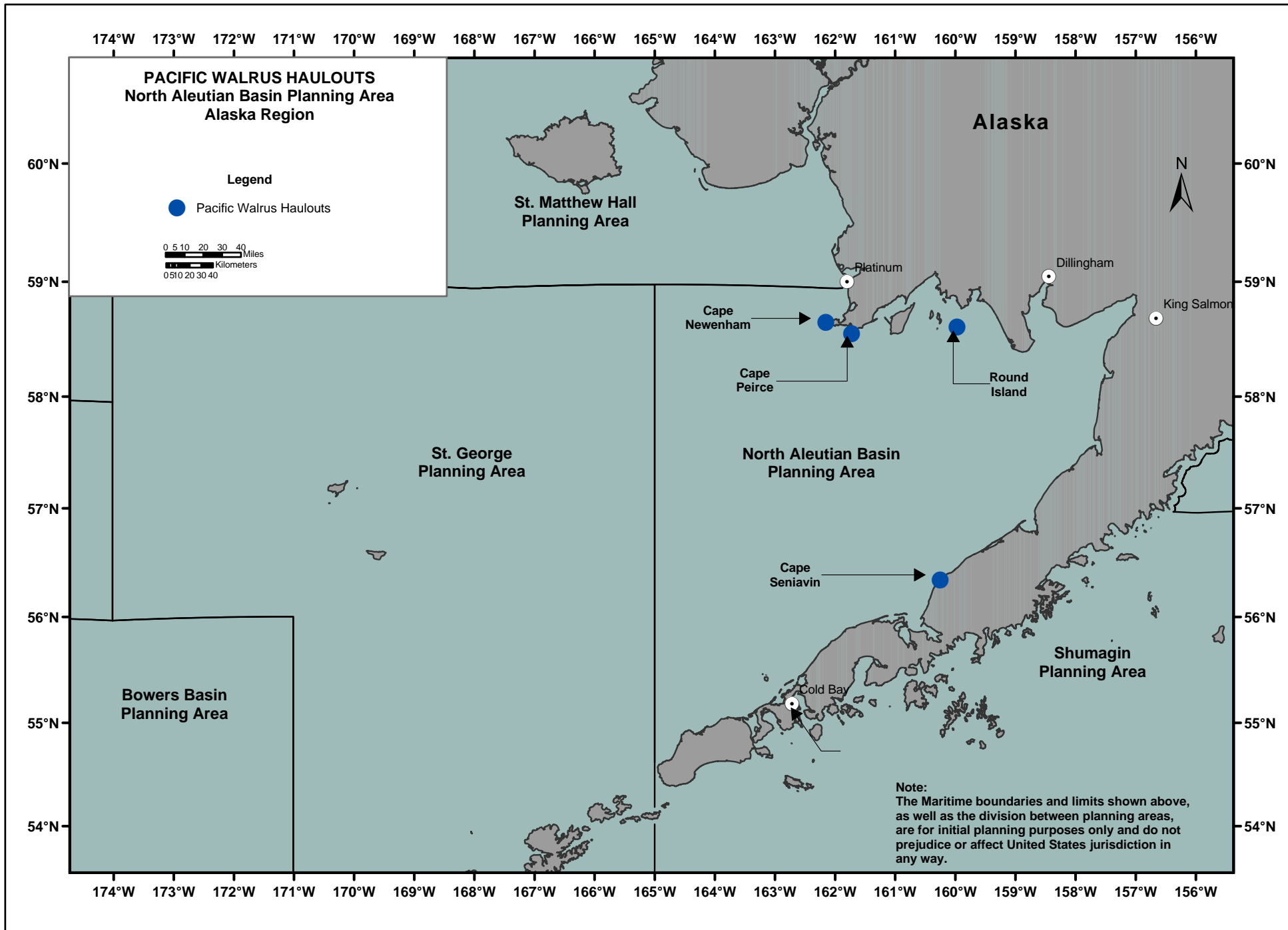


Figure III-35. Pacific Walrus Haulouts in the North Aleutian Basin Planning Area -- Bering Sea Subregion

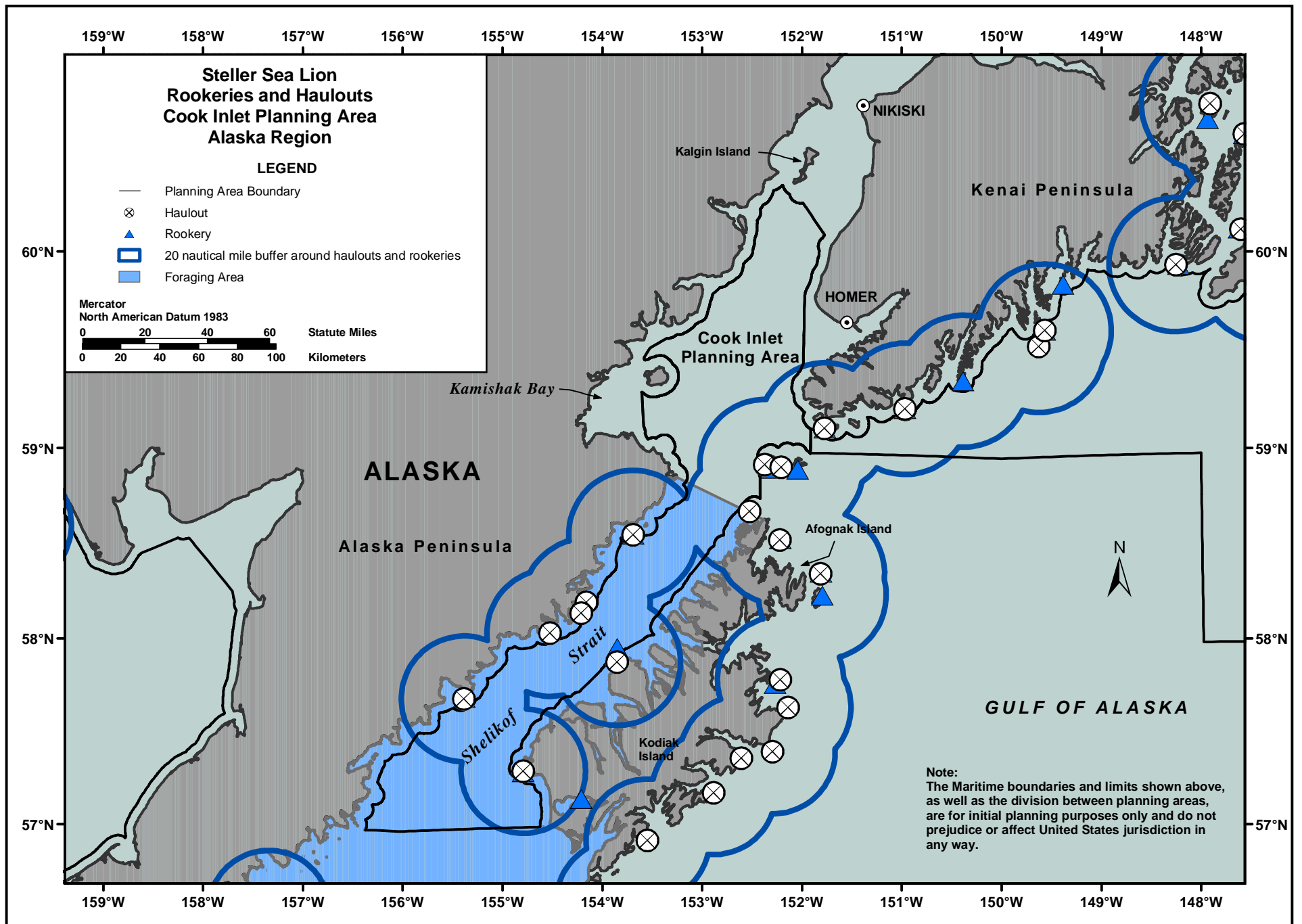


Figure III-36. Western Steller Sea Lion Rookeries and Haulouts -- South Alaska Subregion

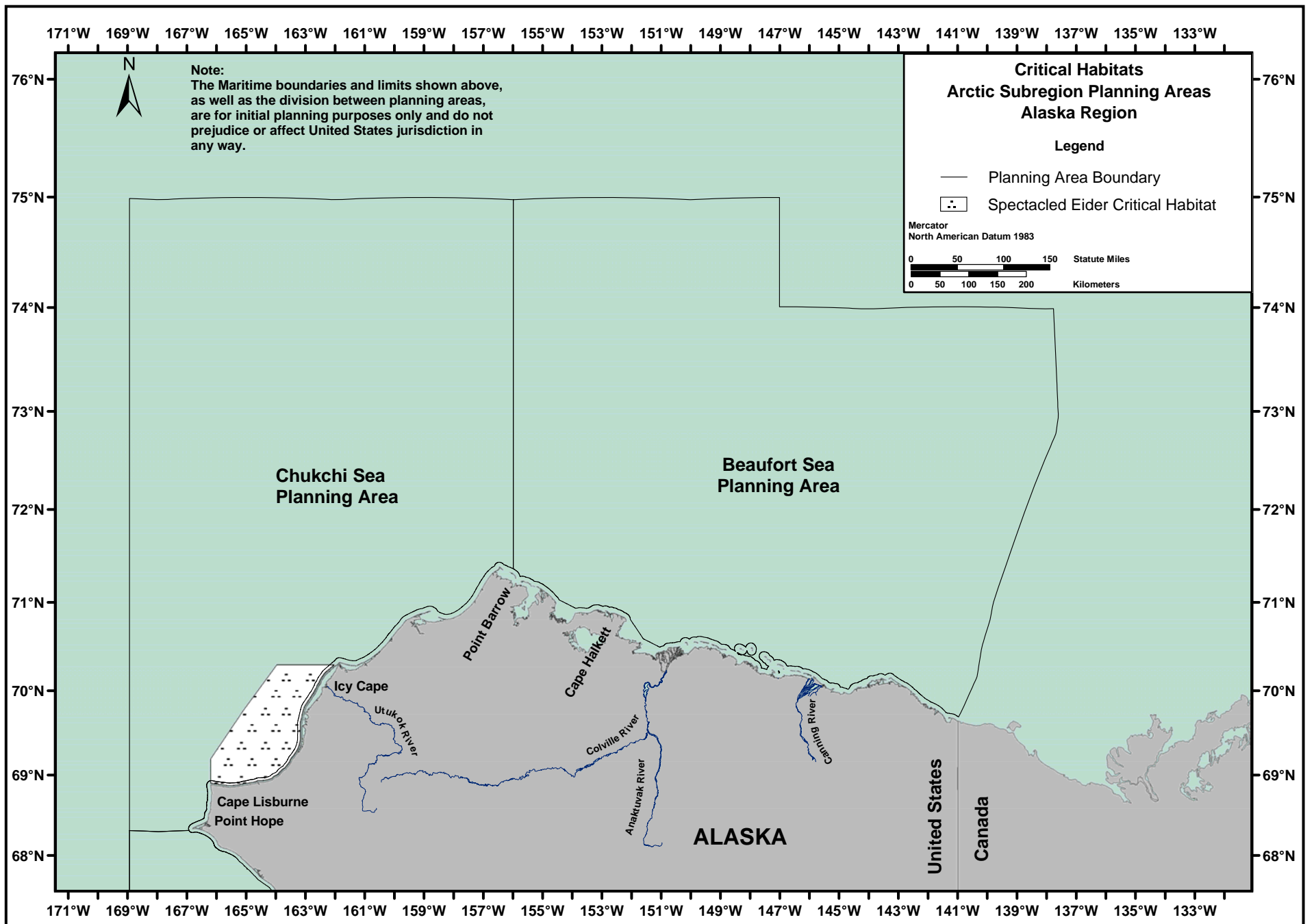


Figure III-37. Critical Habitat for the Spectacled Eider -- Arctic Subregion

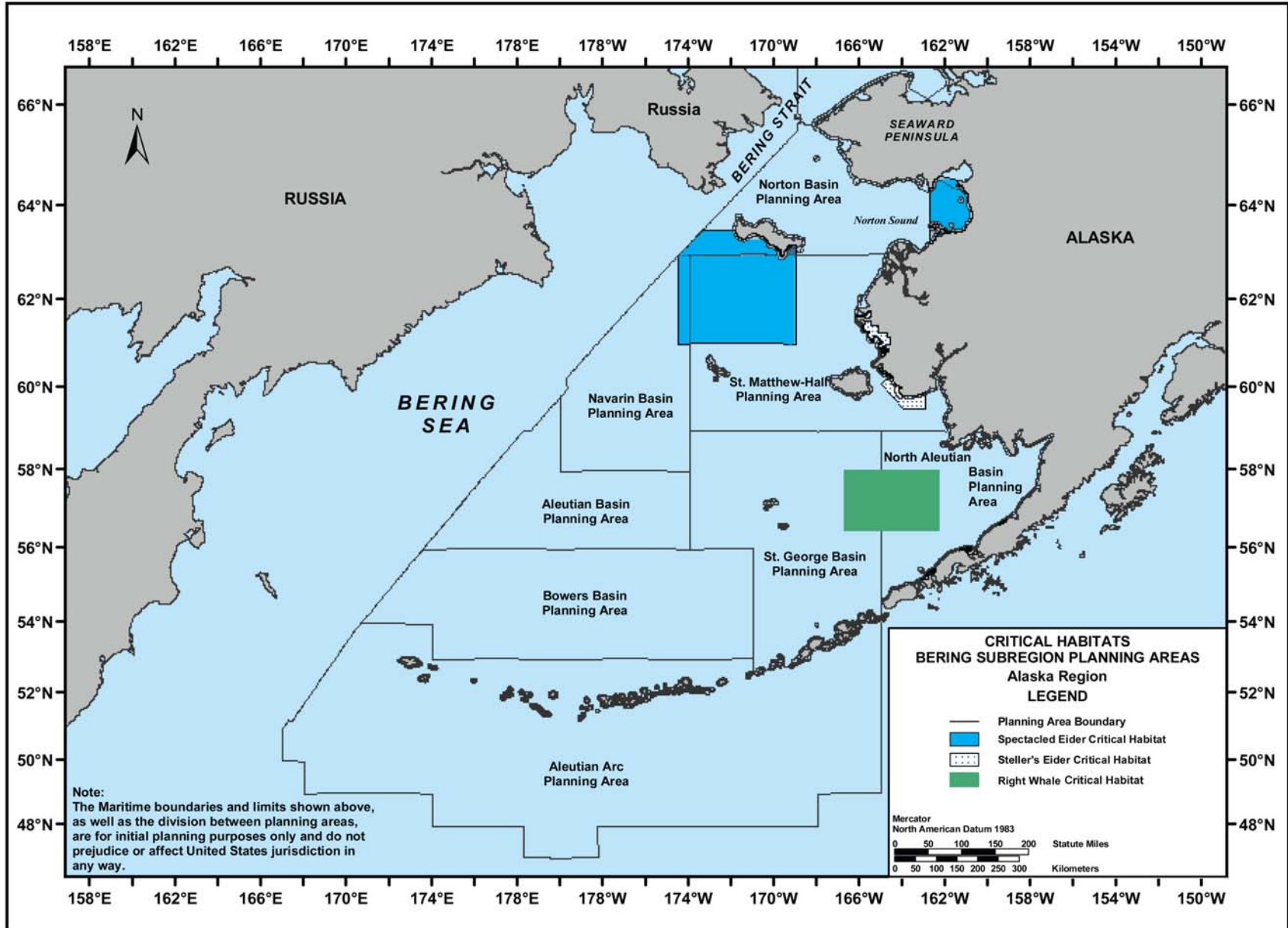


Figure III-38. Critical Habitat for the Spectacled Eider, Steller's Eider, and North Pacific Right Whale -- Bering Sea Subregion