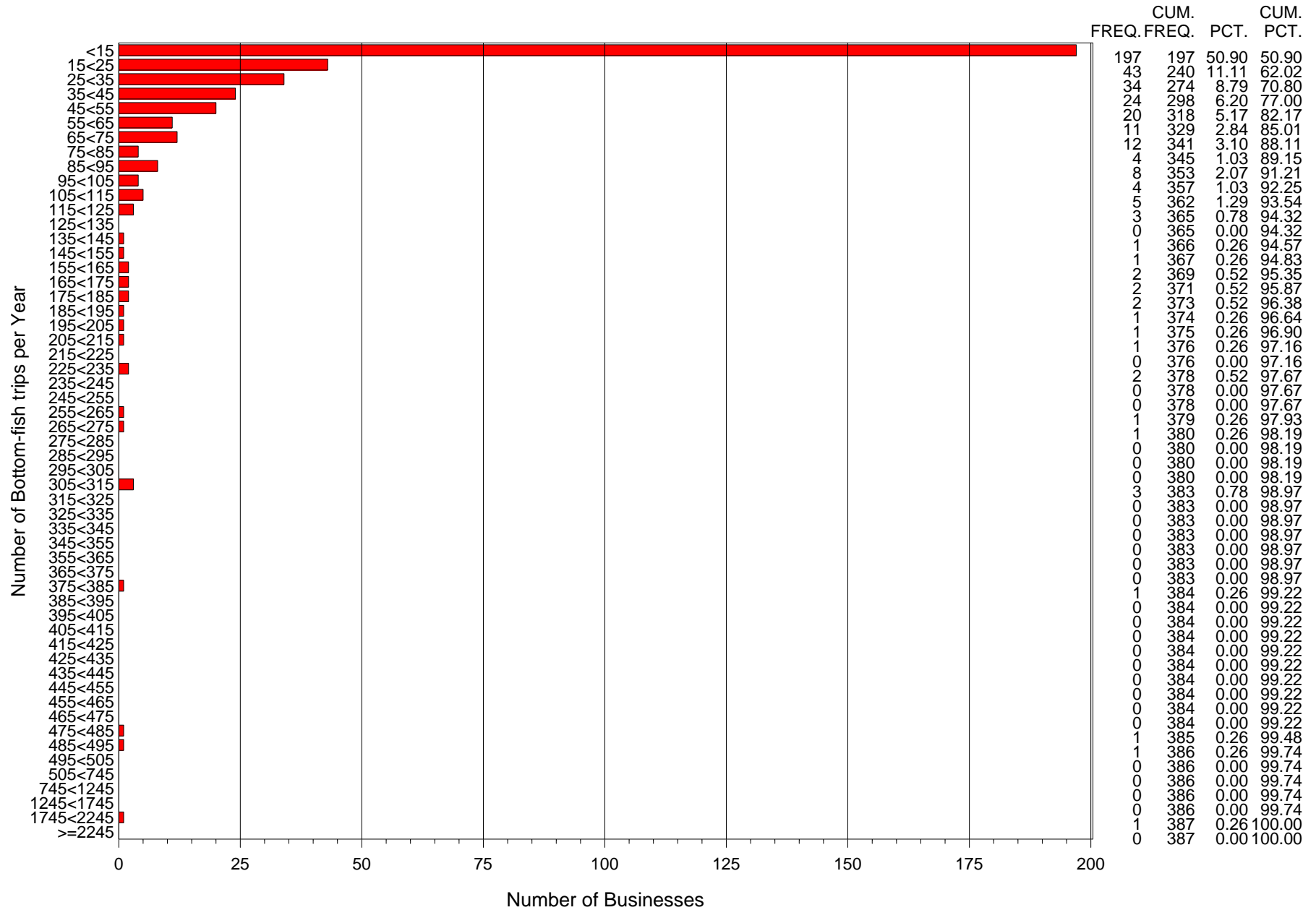
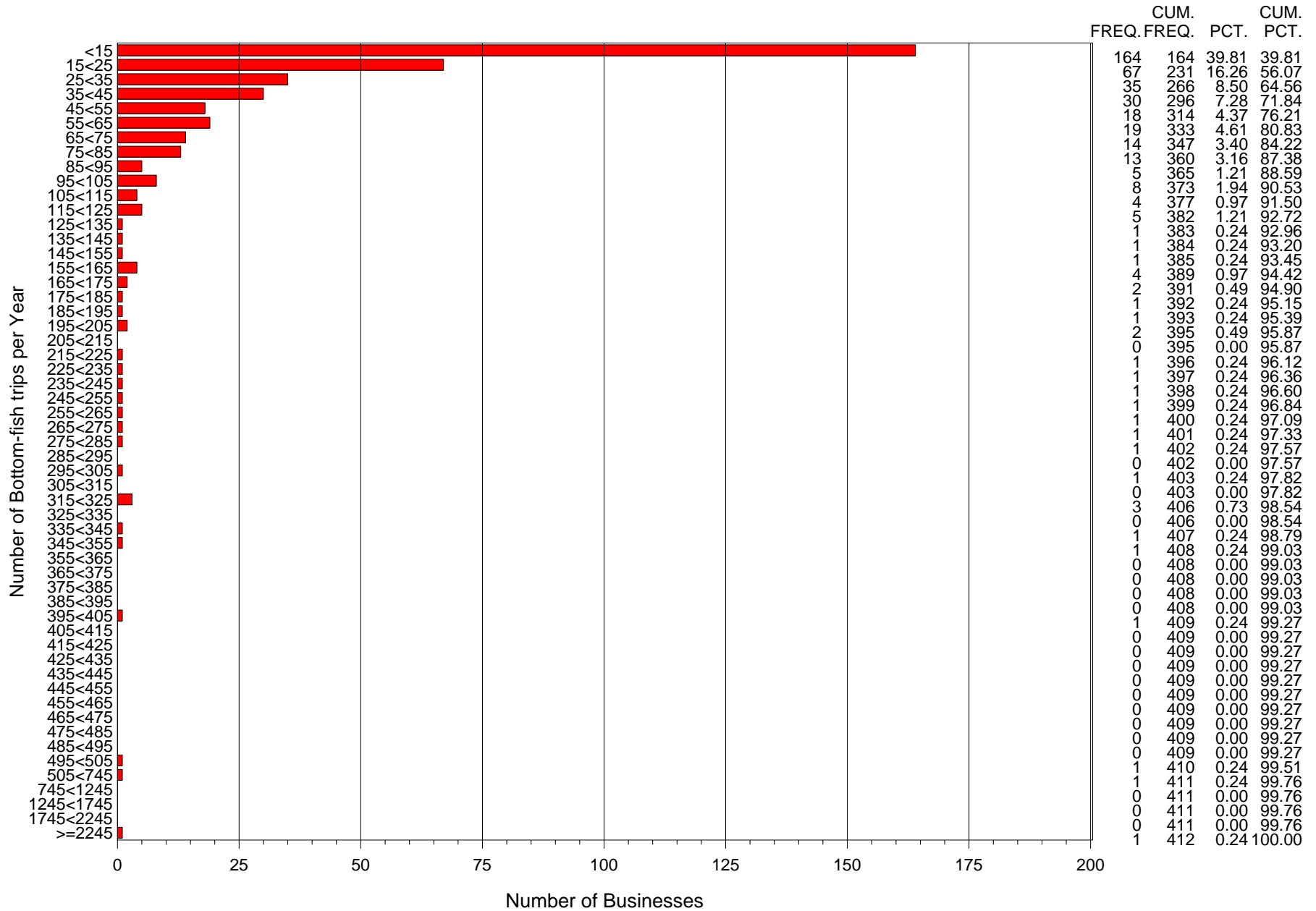


Summary of the number of bottom-fish trips per calendar year by individual businesses
for IPHC = 2C and Year= 1999



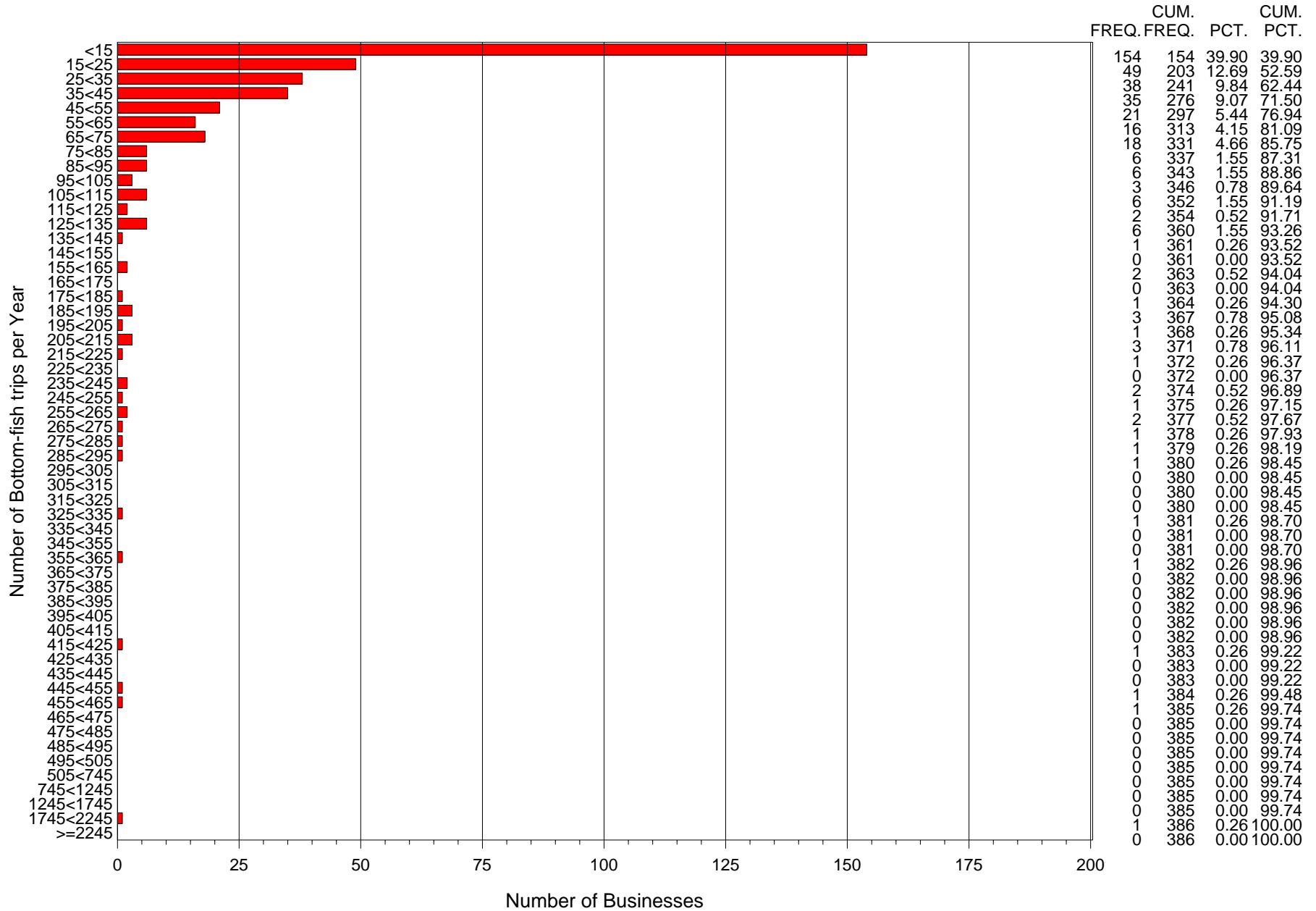
Note that the axes for the number of trips per year changes in scale at 505 trips per year

Summary of the number of bottom-fish trips per calendar year by individual businesses
for IPHC = 2C and Year= 2000



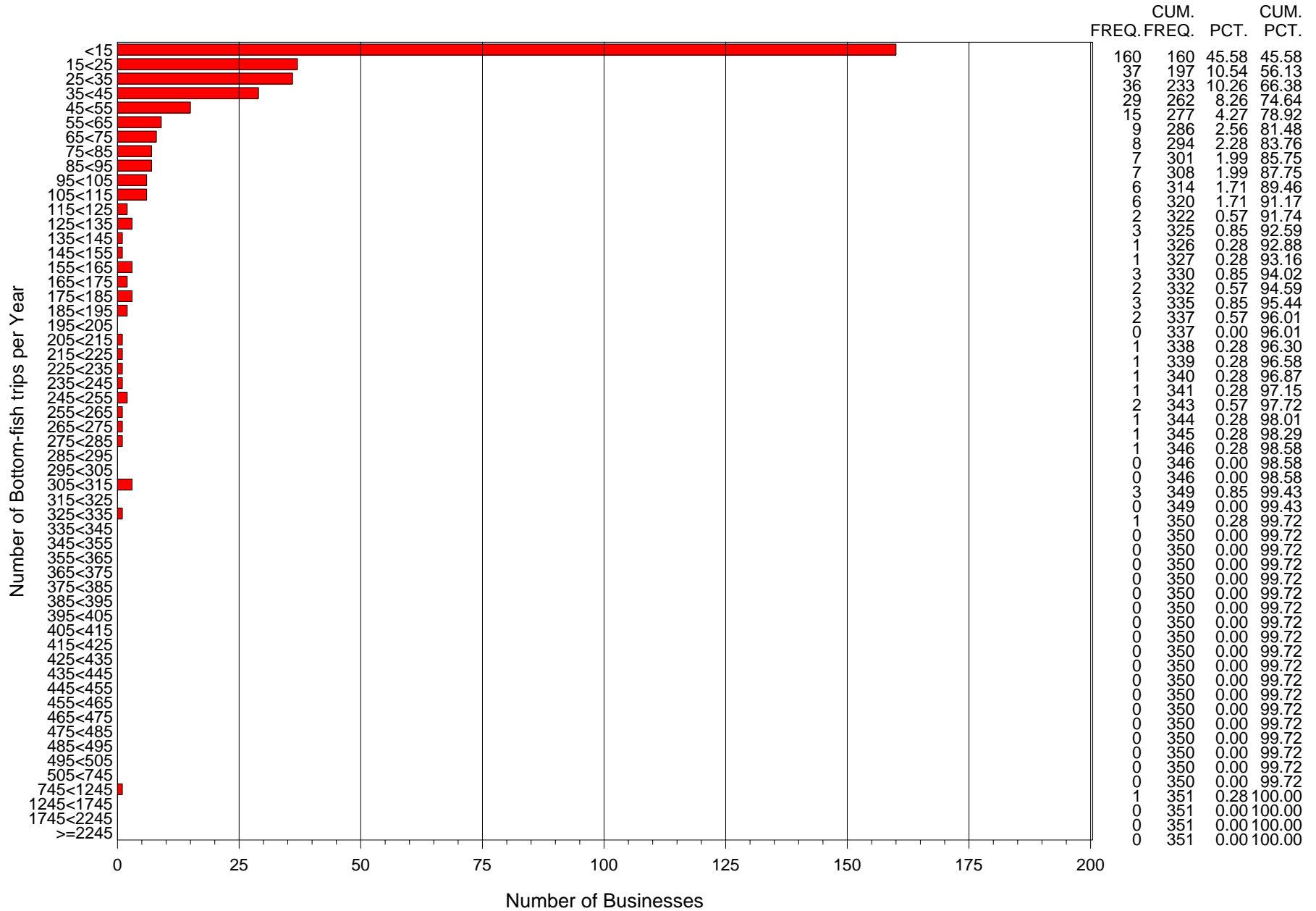
Note that the axes for the number of trips per year changes in scale at 505 trips per year

Summary of the number of bottom-fish trips per calendar year by individual businesses
for IPHC = 2C and Year= 2001



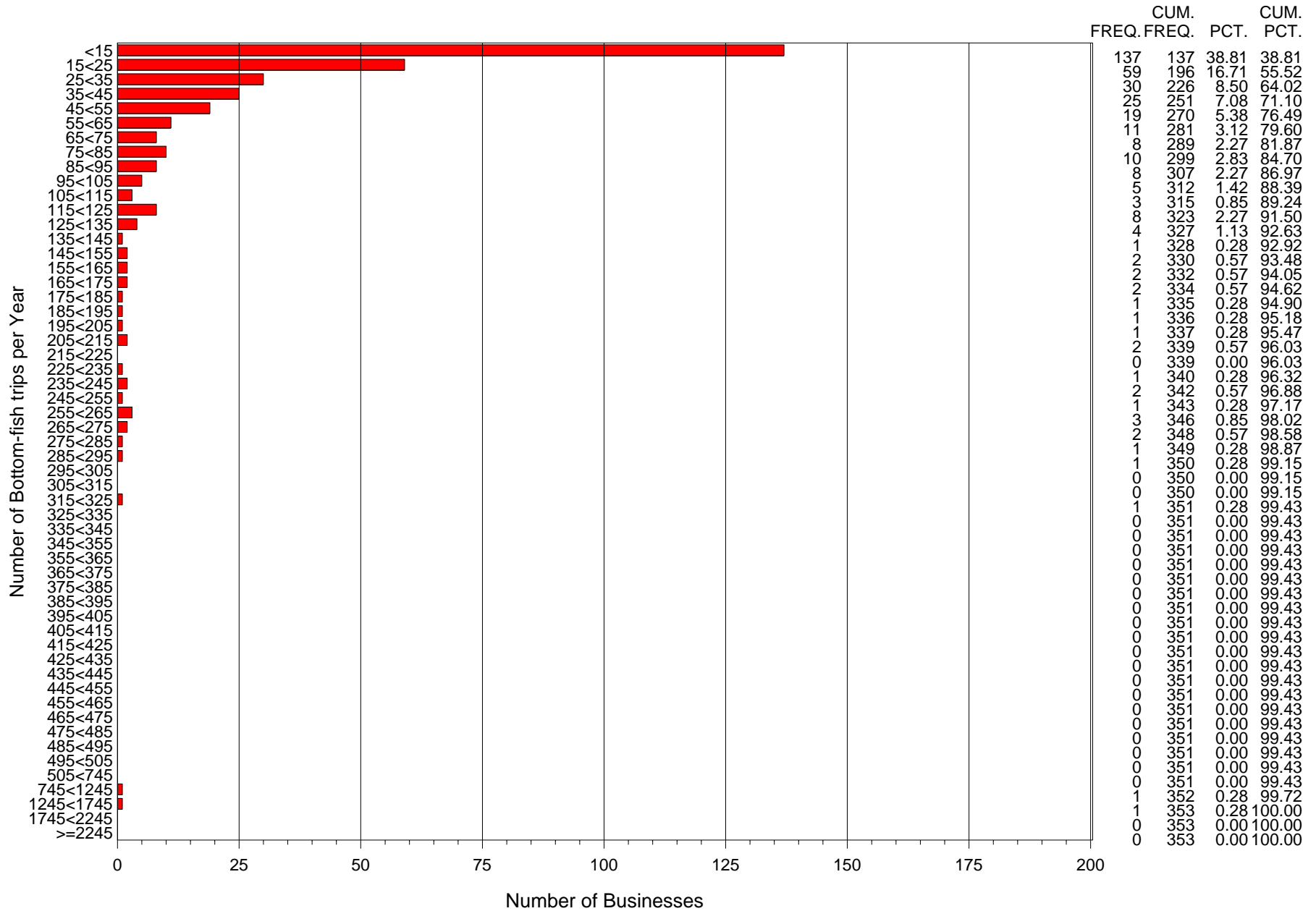
Note that the axes for the number of trips per year changes in scale at 505 trips per year

Summary of the number of bottom-fish trips per calendar year by individual businesses
for IPHC = 2C and Year= 2002



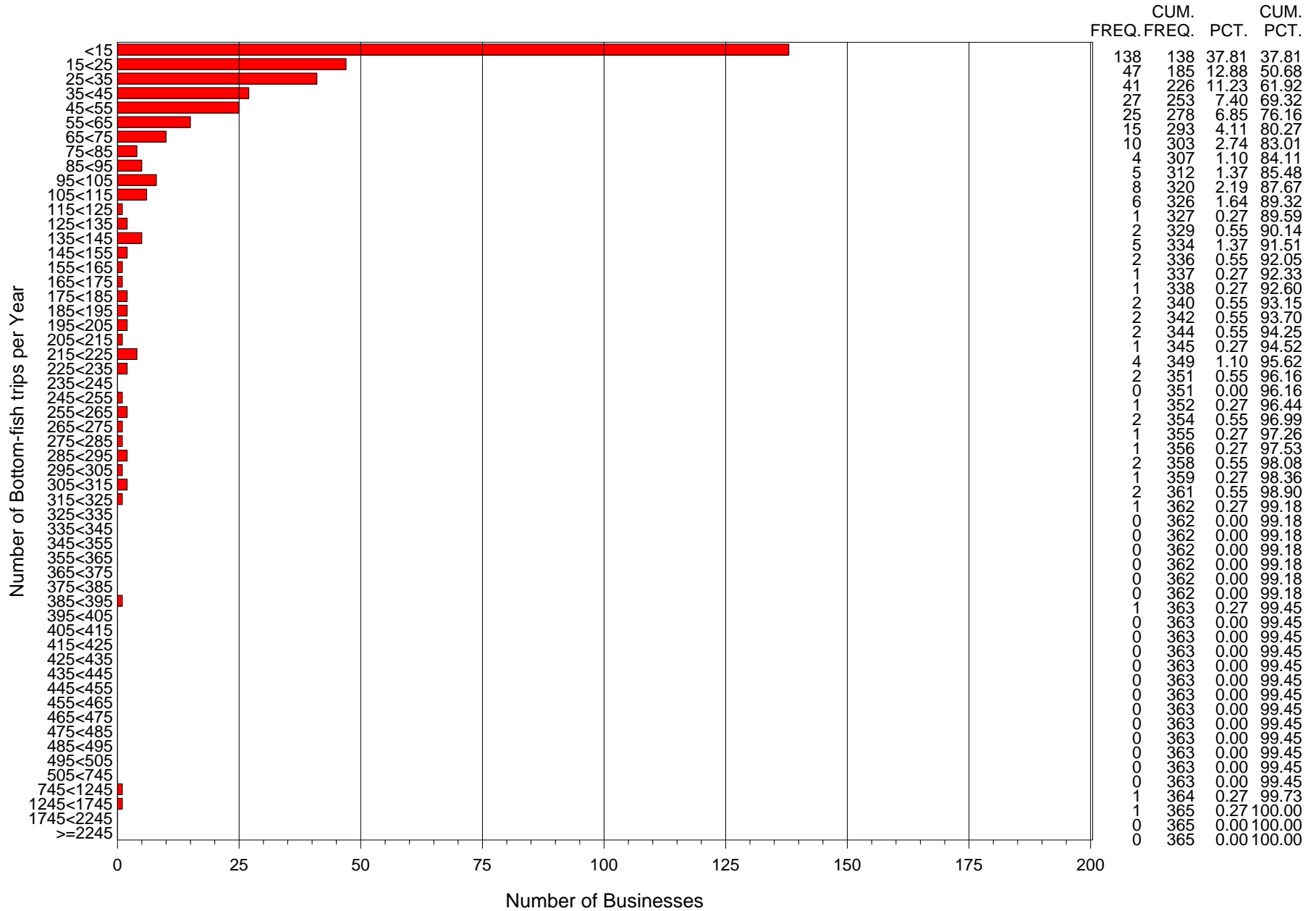
Note that the axes for the number of trips per year changes in scale at 505 trips per year

Summary of the number of bottom-fish trips per calendar year by individual businesses
for IPHC = 2C and Year= 2003



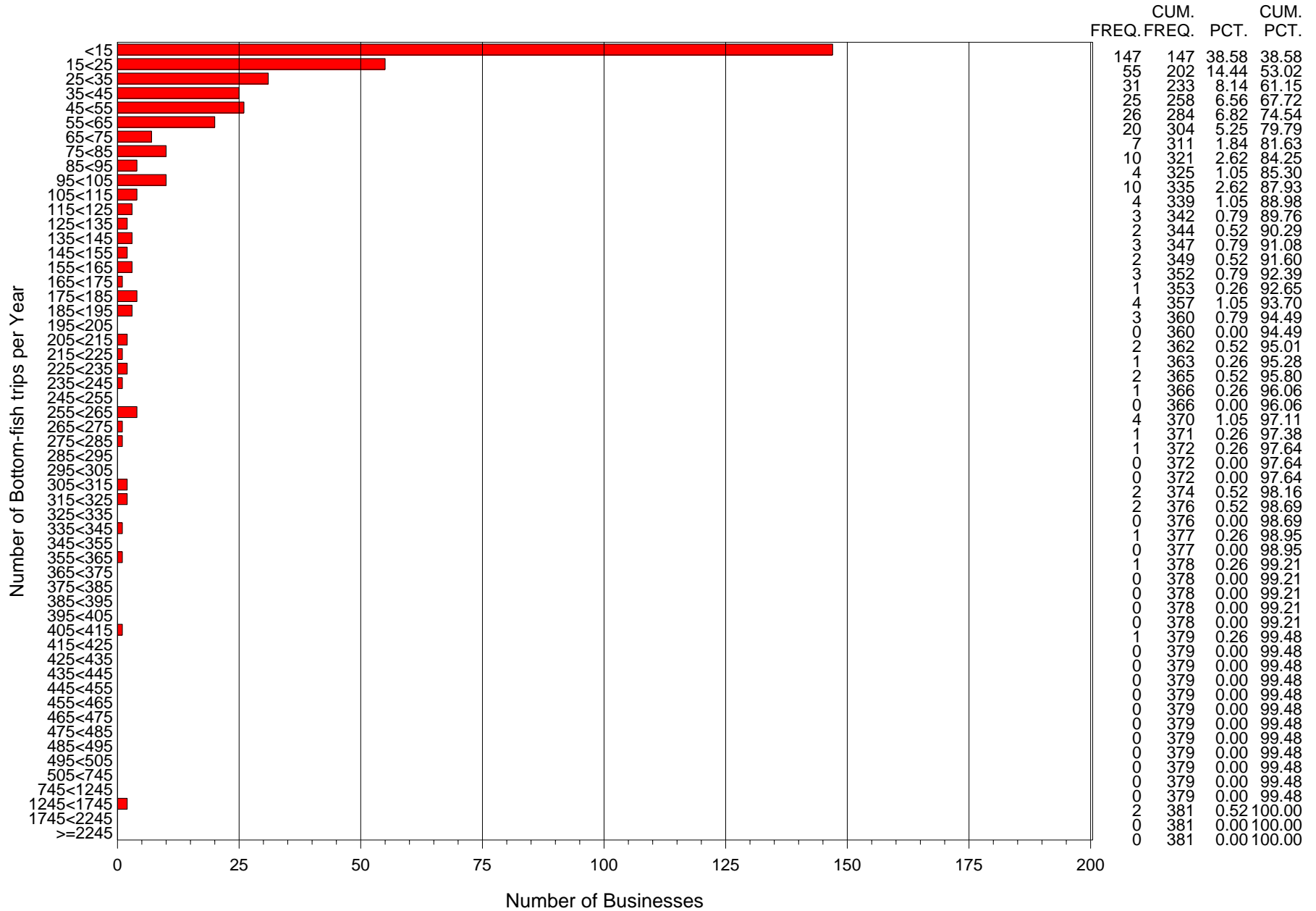
Note that the axes for the number of trips per year changes in scale at 505 trips per year

Summary of the number of bottom-fish trips per calendar year by individual businesses
for IPHC = 2C and Year= 2004



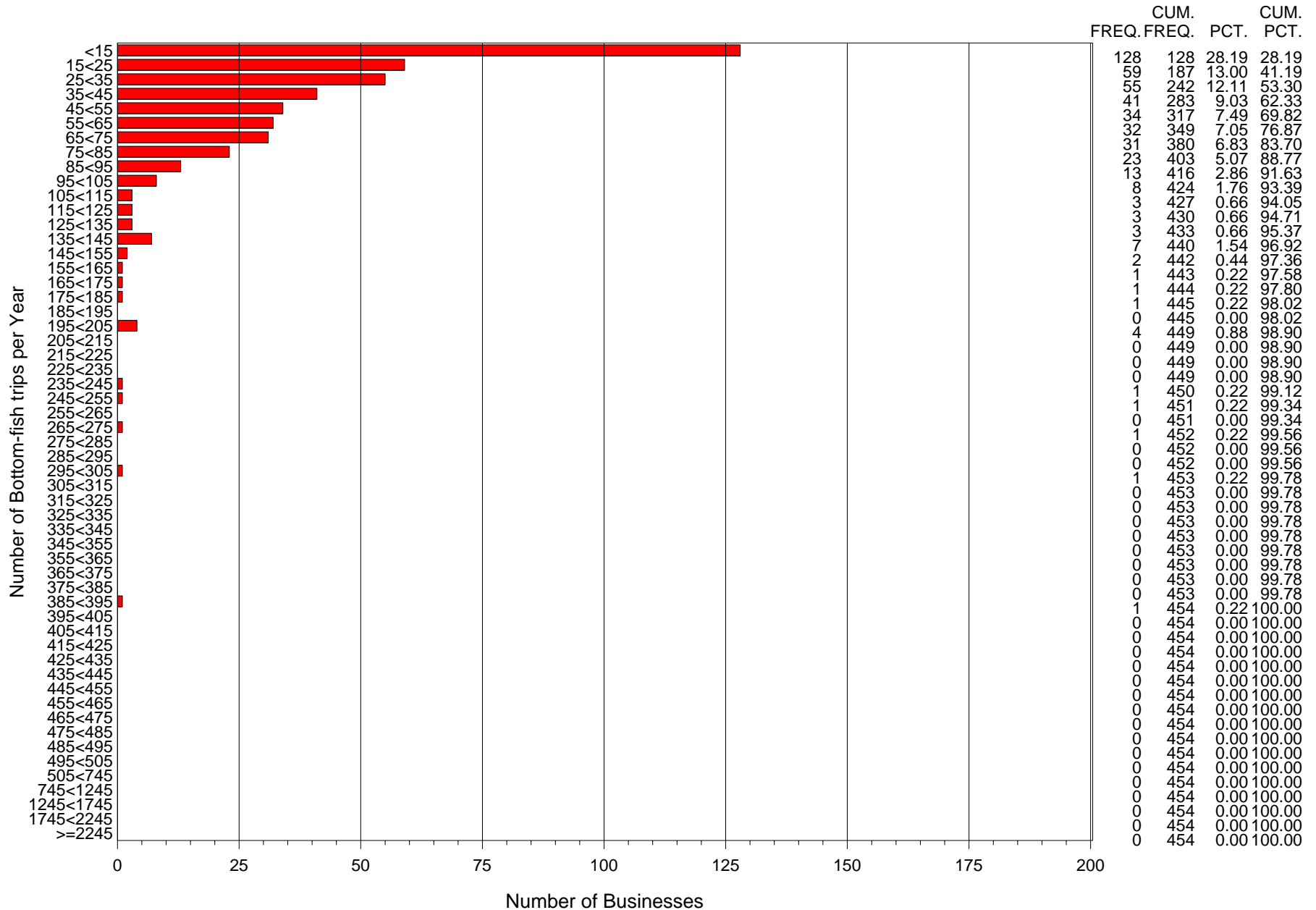
Note that the axes for the number of trips per year changes in scale at 505 trips per year

Summary of the number of bottom-fish trips per calendar year by individual businesses
for IPHC = 2C and Year= 2005



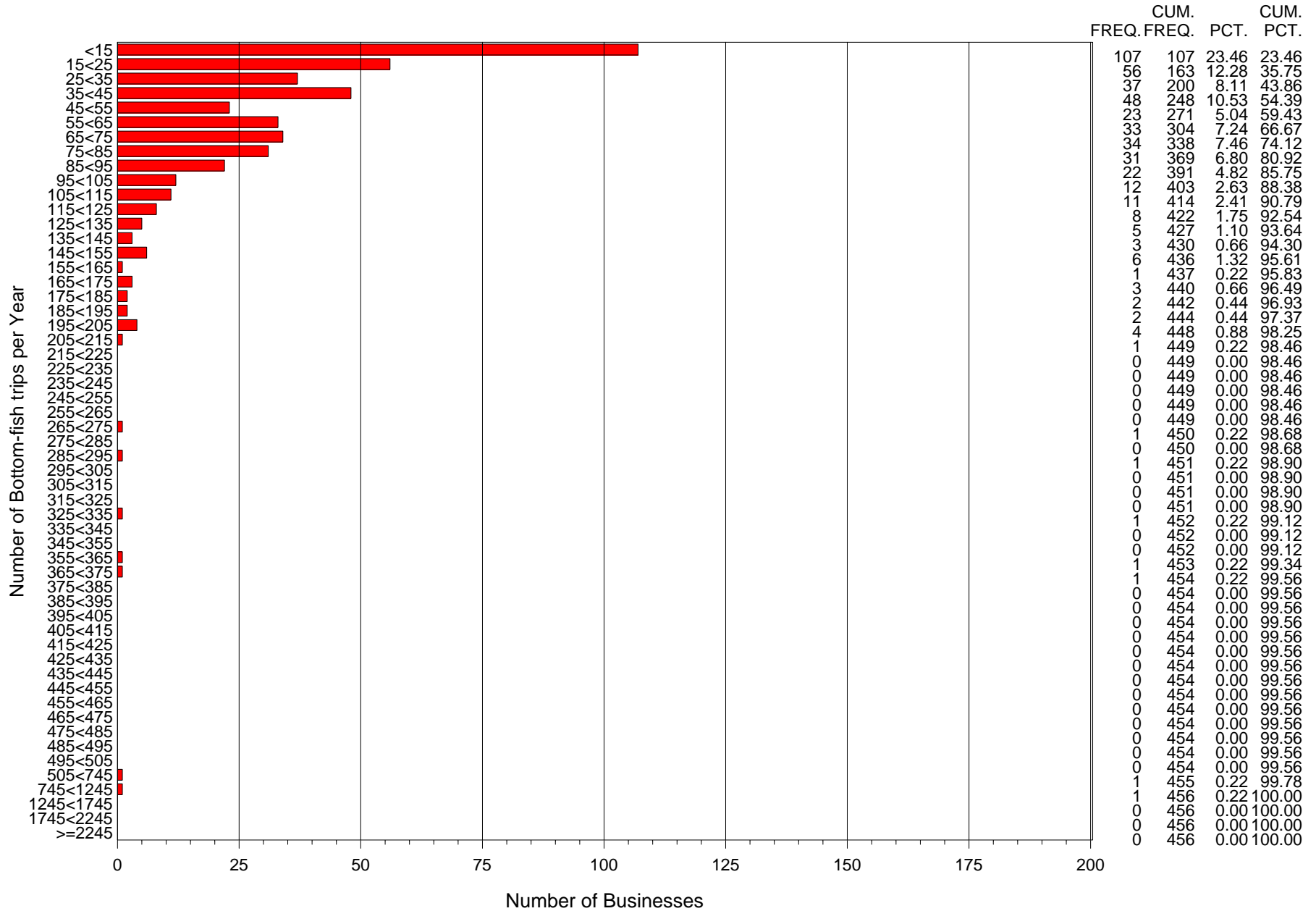
Note that the axes for the number of trips per year changes in scale at 505 trips per year

Summary of the number of bottom-fish trips per calendar year by individual businesses
for IPHC = 3A and Year= 1999



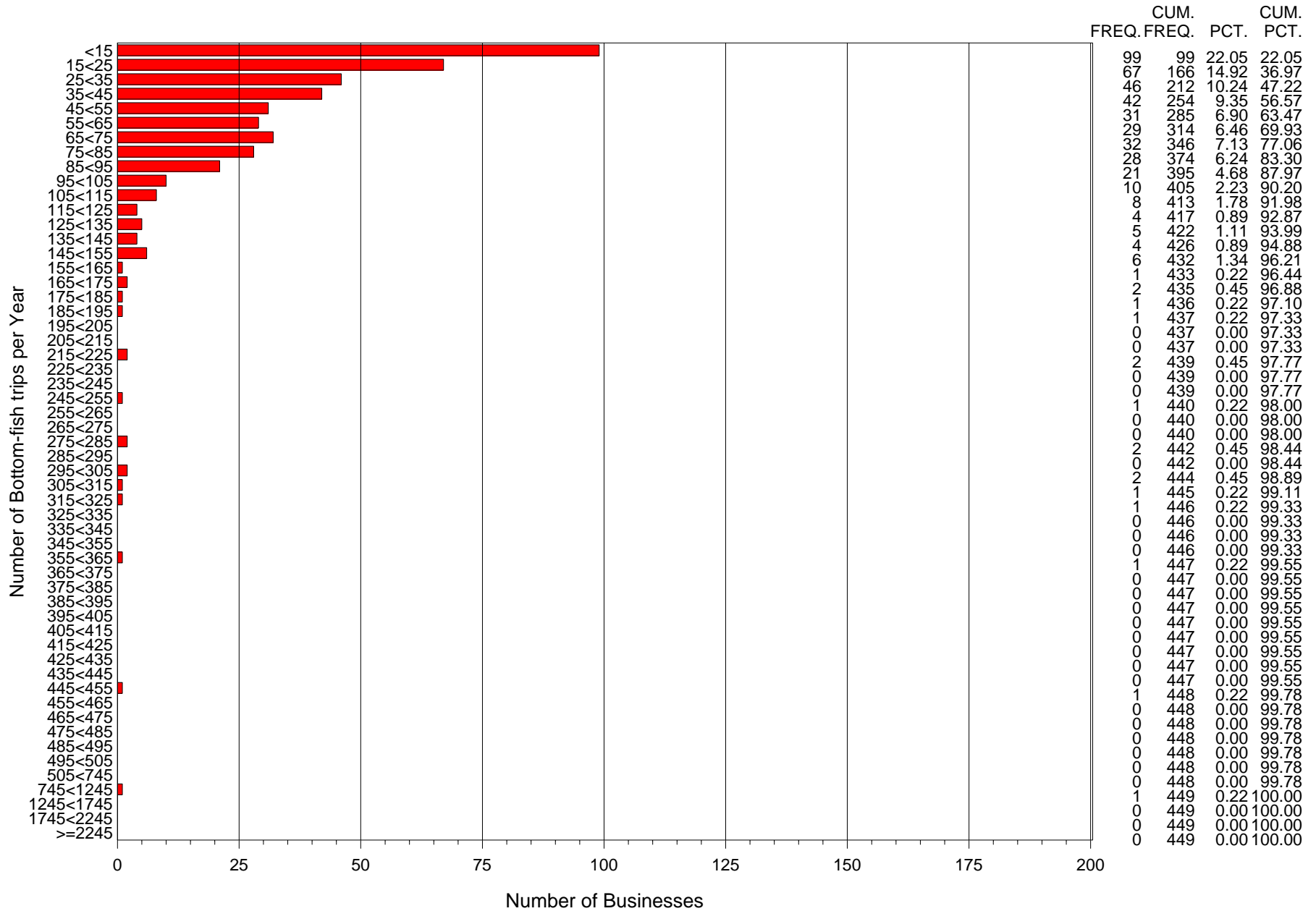
Note that the axes for the number of trips per year changes in scale at 505 trips per year

Summary of the number of bottom-fish trips per calendar year by individual businesses
for IPHC = 3A and Year= 2000



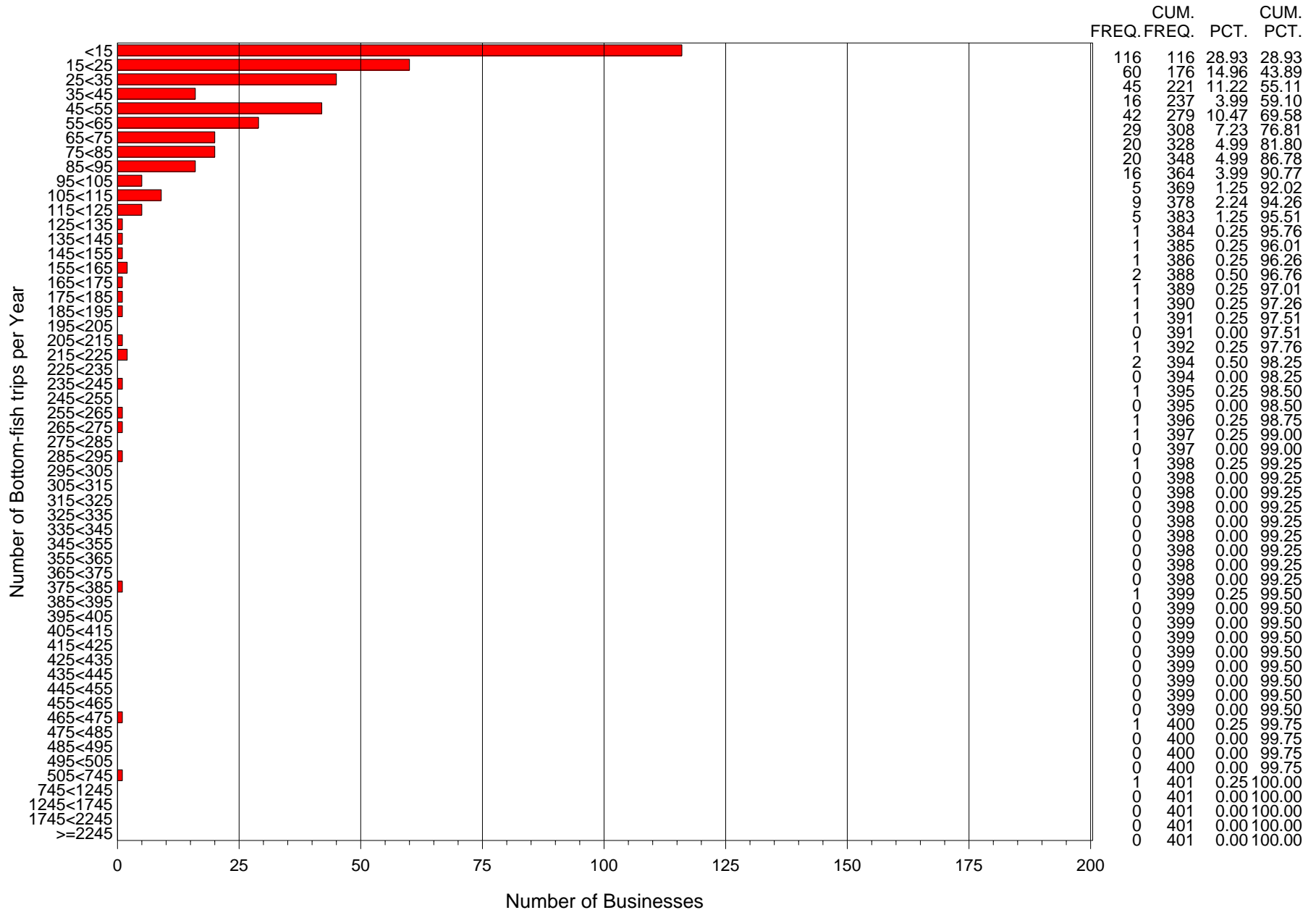
Note that the axes for the number of trips per year changes in scale at 505 trips per year

Summary of the number of bottom-fish trips per calendar year by individual businesses
for IPHC = 3A and Year= 2001



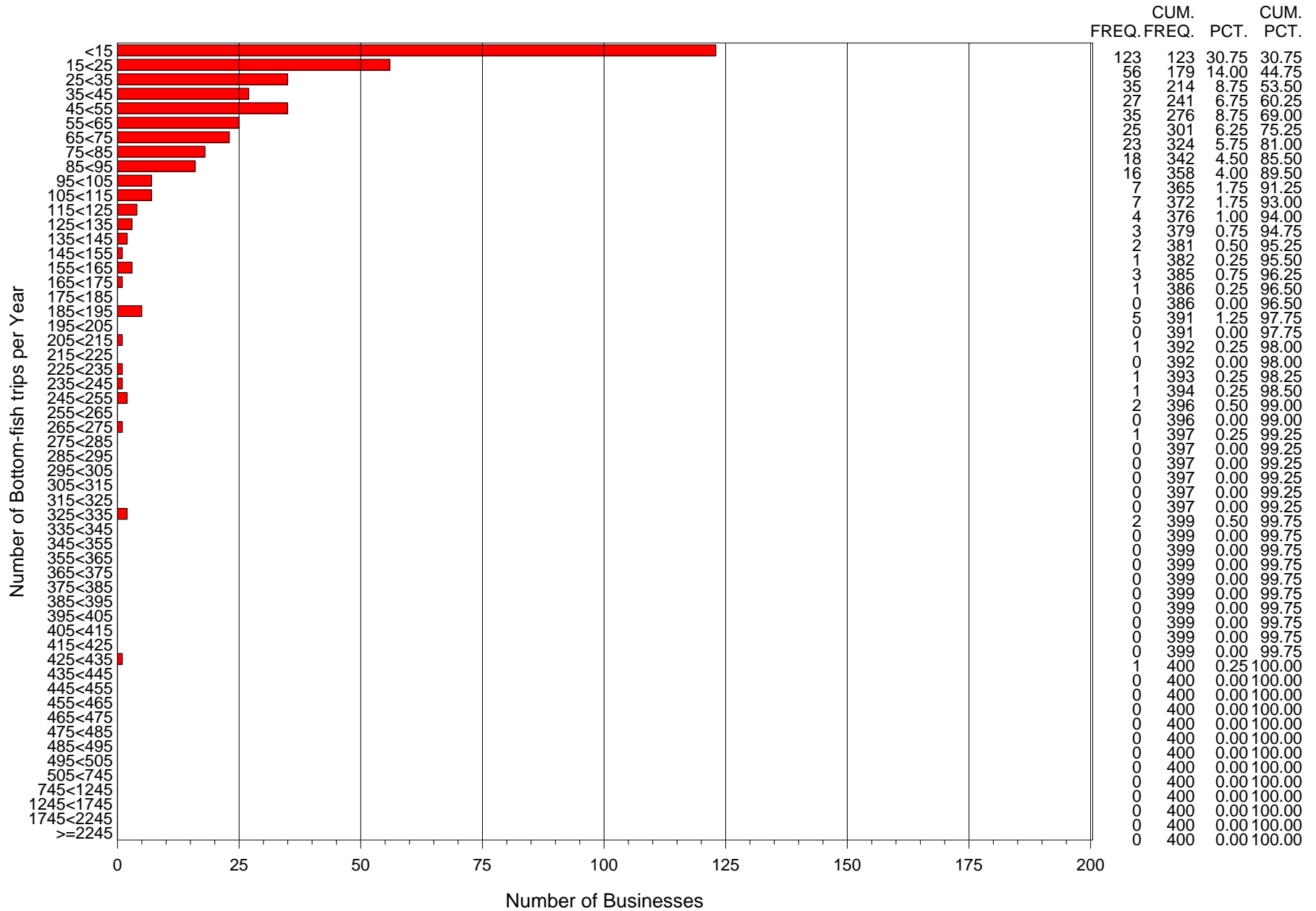
Note that the axes for the number of trips per year changes in scale at 505 trips per year

Summary of the number of bottom-fish trips per calendar year by individual businesses
for IPHC = 3A and Year= 2002



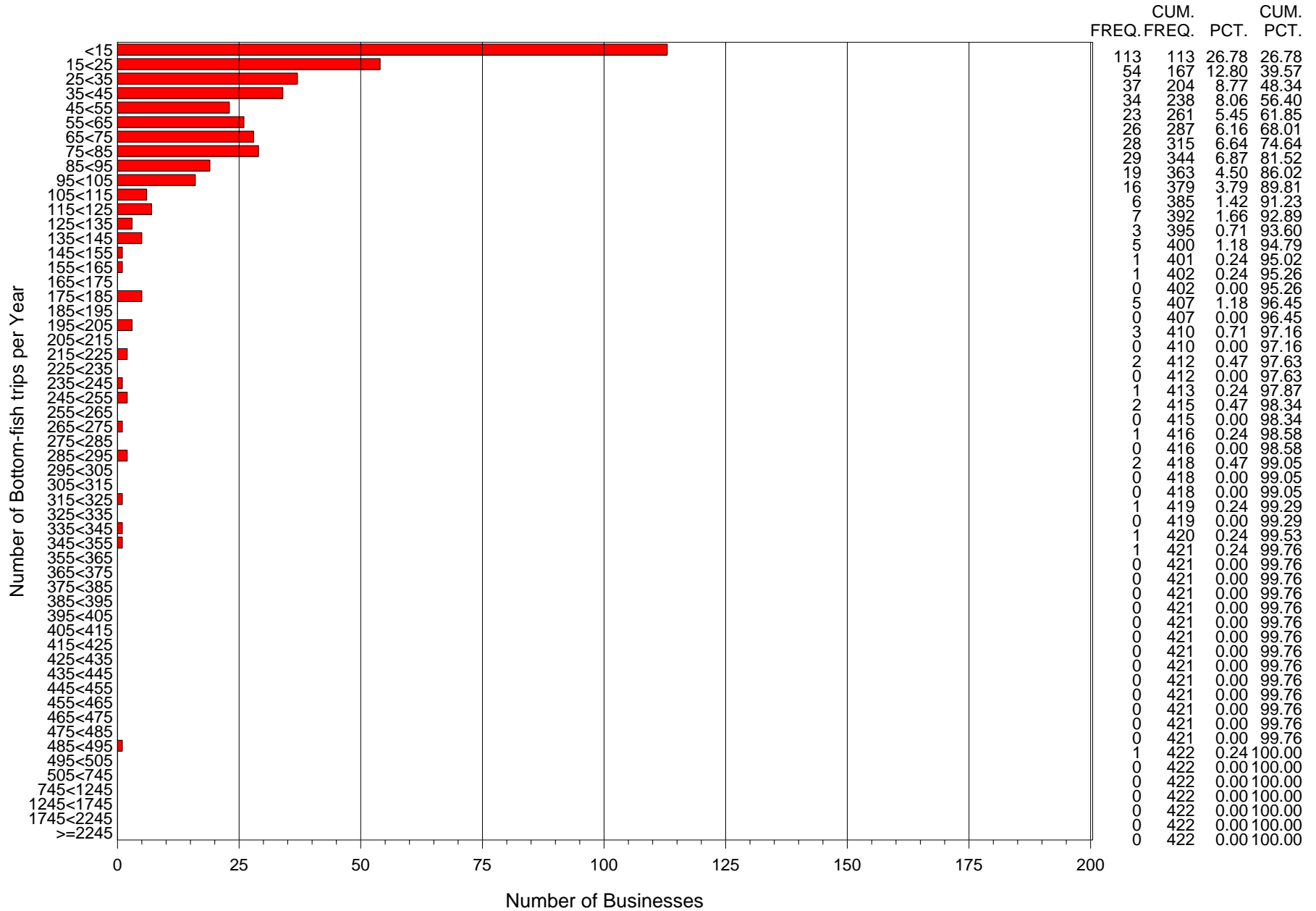
Note that the axes for the number of trips per year changes in scale at 505 trips per year

Summary of the number of bottom-fish trips per calendar year by individual businesses
for IPHC = 3A and Year= 2003



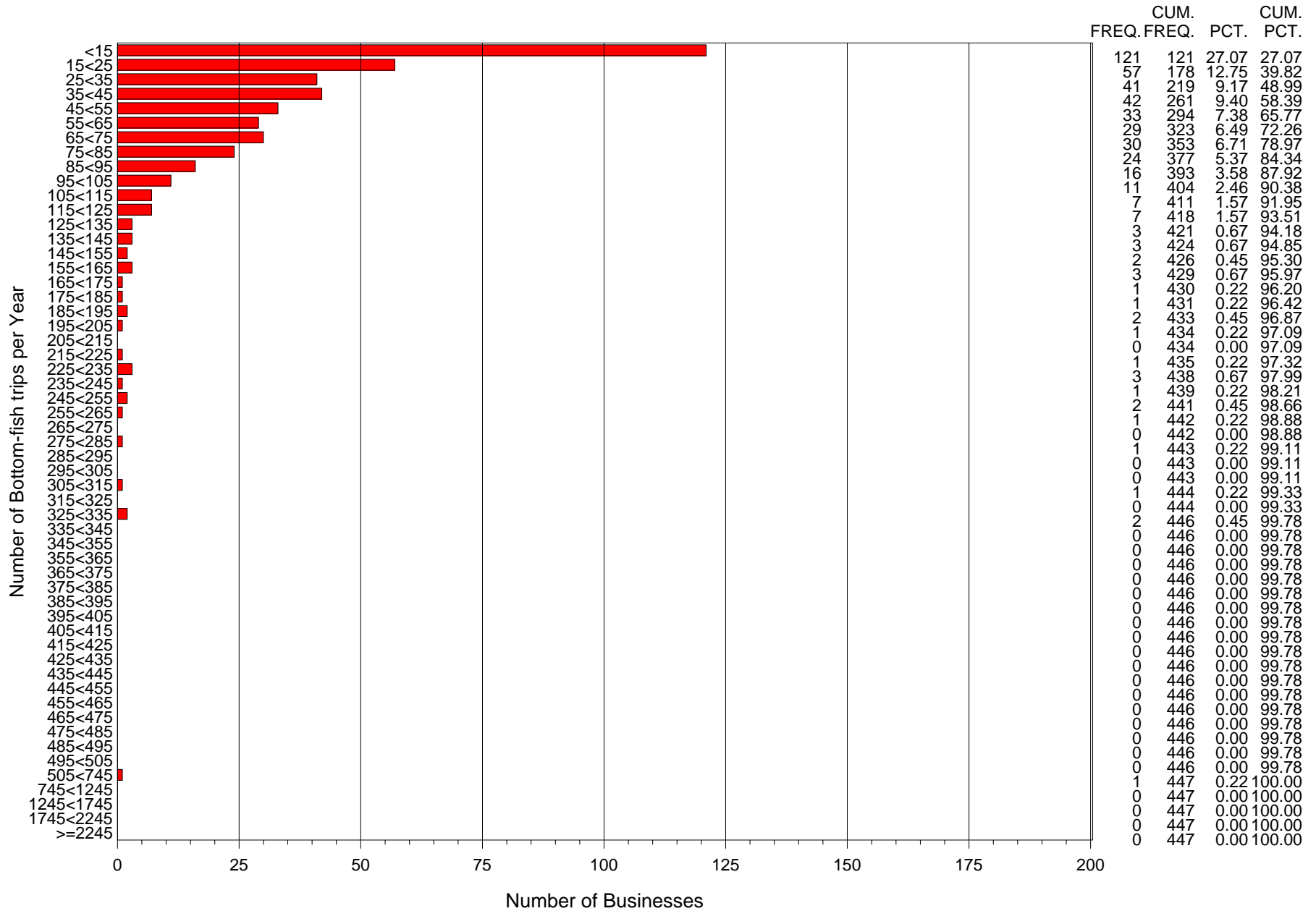
Note that the axes for the number of trips per year changes in scale at 505 trips per year

Summary of the number of bottom-fish trips per calendar year by individual businesses
for IPHC = 3A and Year= 2004



Note that the axes for the number of trips per year changes in scale at 505 trips per year

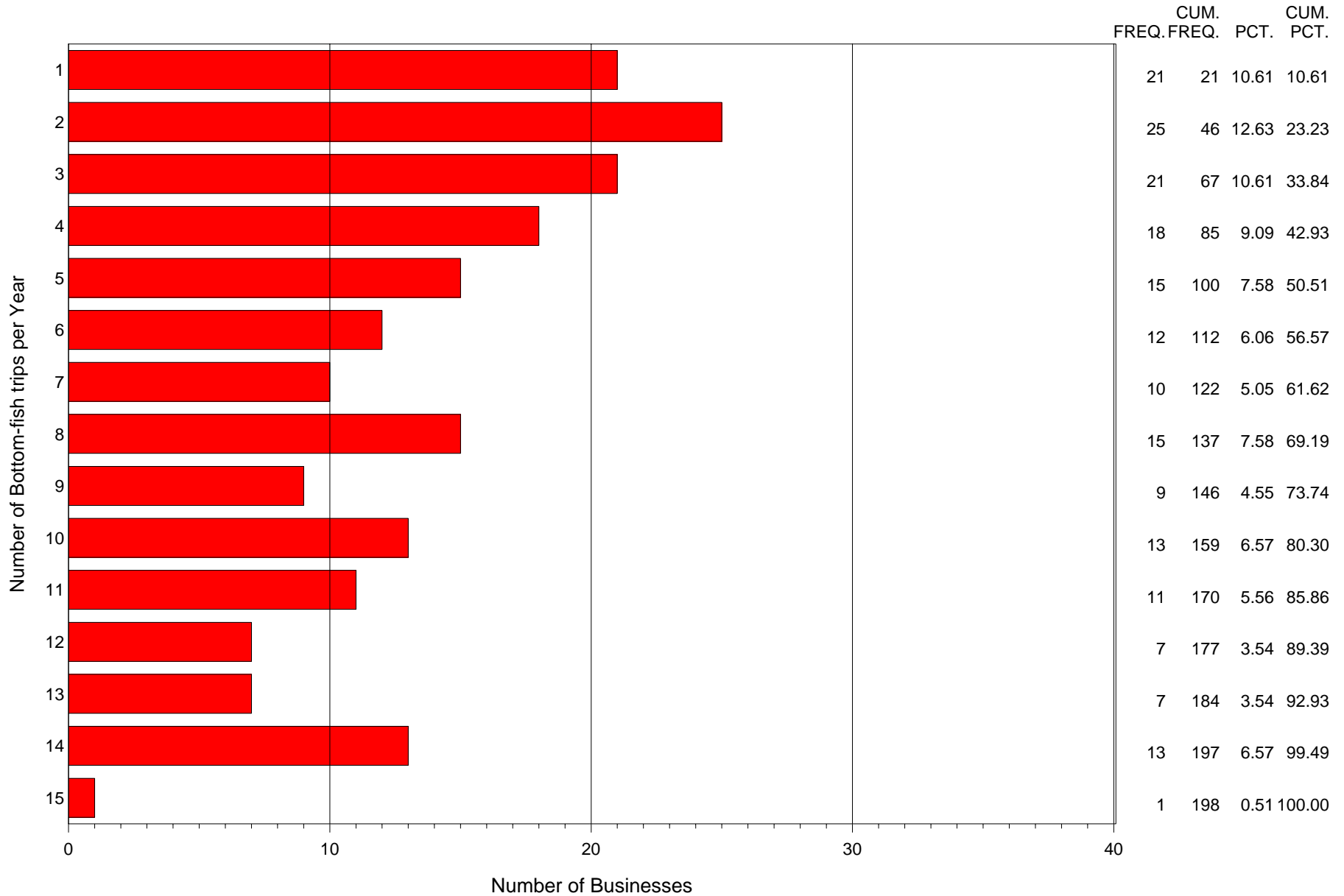
Summary of the number of bottom-fish trips per calendar year by individual businesses
for IPHC = 3A and Year= 2005



Note that the axes for the number of trips per year changes in scale at 505 trips per year

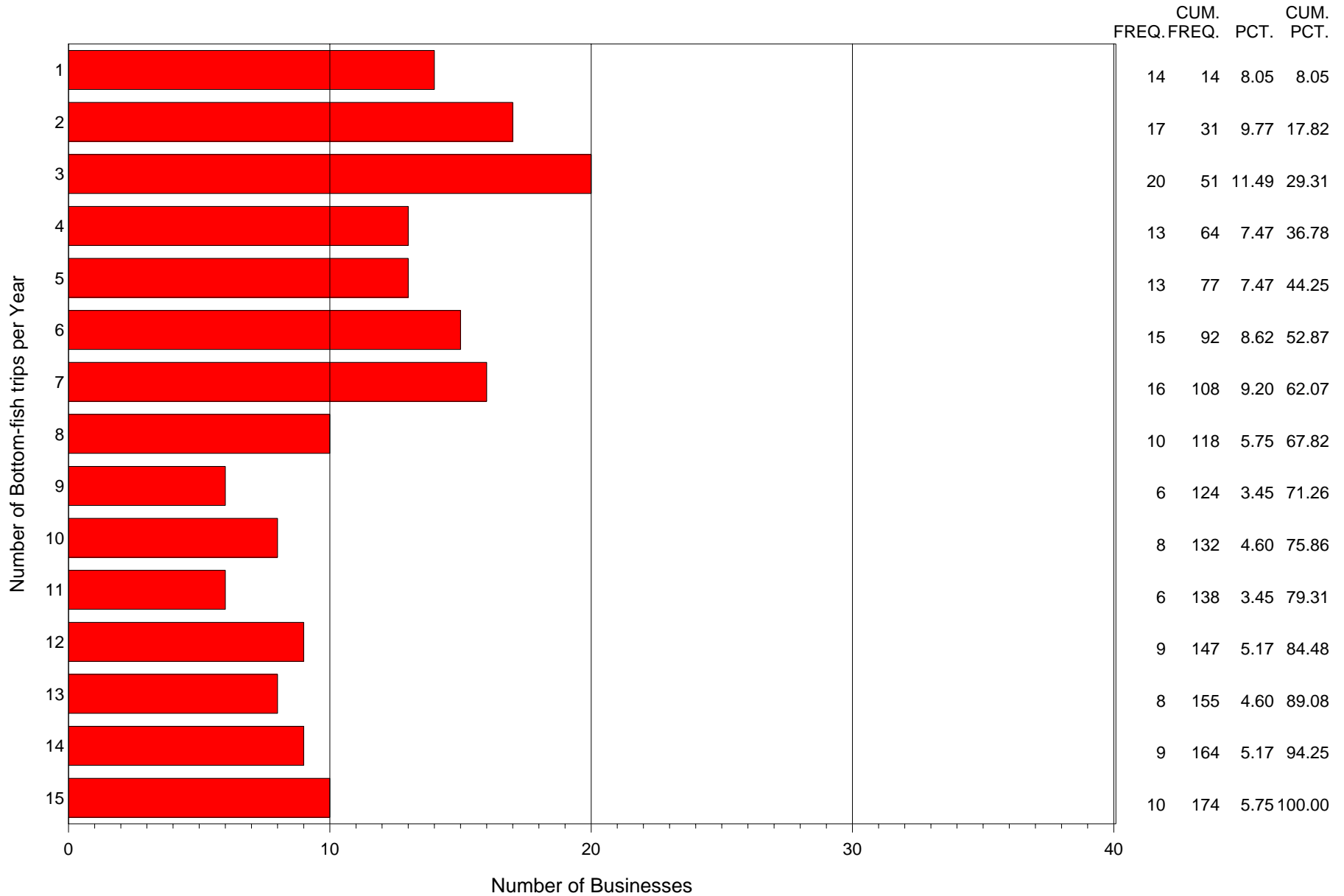
Summary of the number of bottom-fish trips per calendar year by individual businesses
for IPHC = 2C and Year= 1999

FOR BOTTOMFISH TRIPS PER YEAR BETWEEN 1 AND 15 ONLY



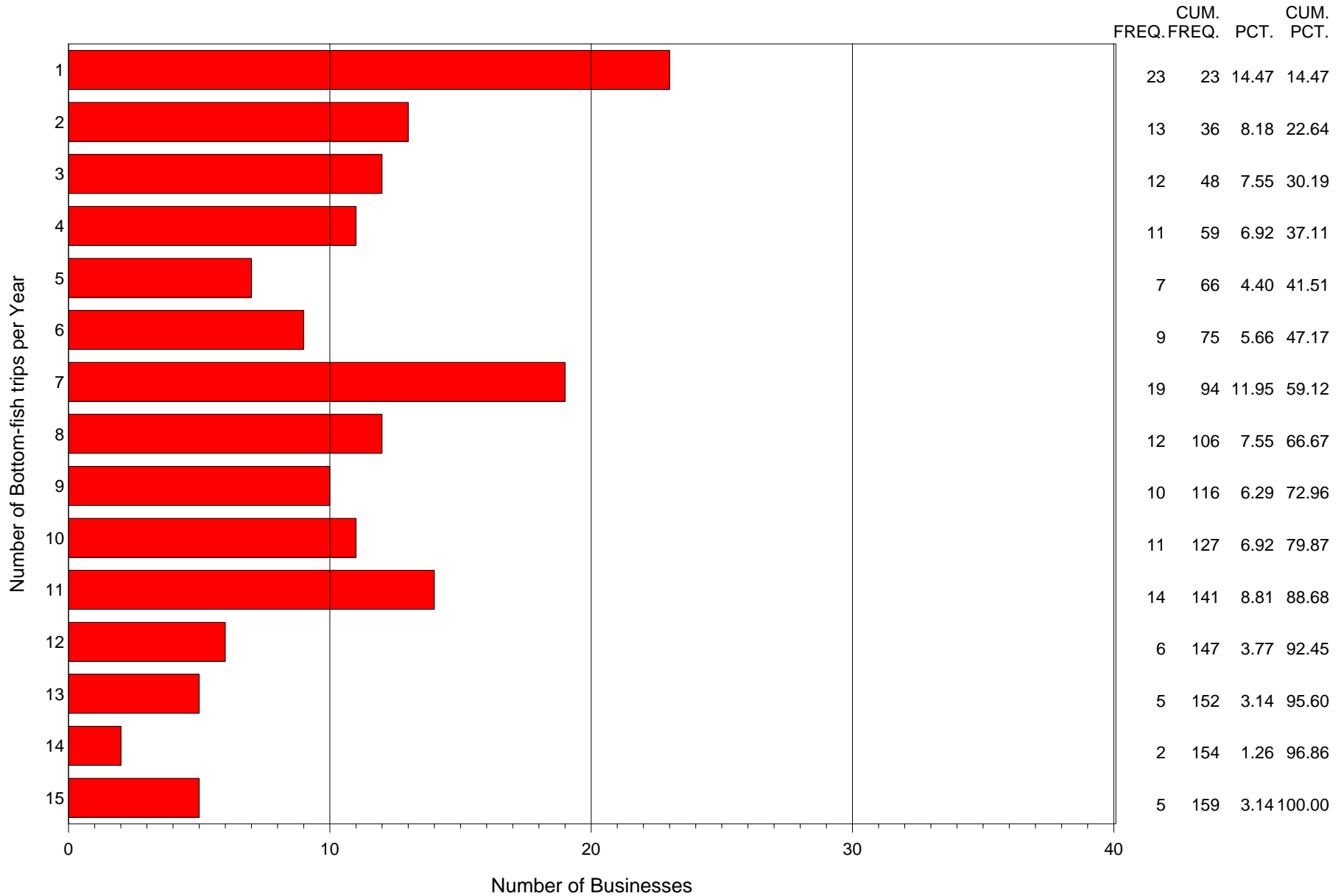
Summary of the number of bottom-fish trips per calendar year by individual businesses
for IPHC = 2C and Year= 2000

FOR BOTTOMFISH TRIPS PER YEAR BETWEEN 1 AND 15 ONLY



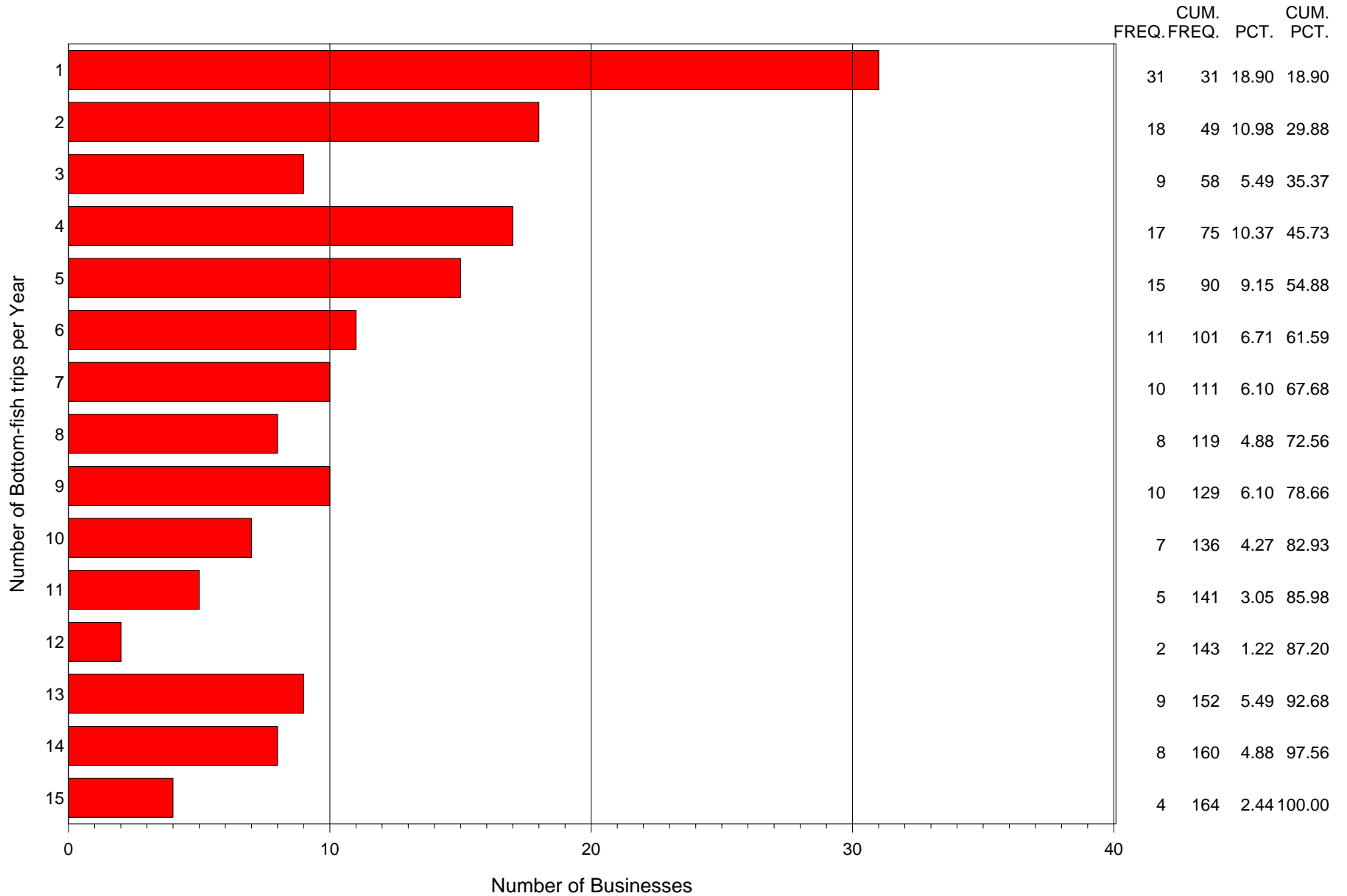
Summary of the number of bottom-fish trips per calendar year by individual businesses
for IPHC = 2C and Year= 2001

FOR BOTTOMFISH TRIPS PER YEAR BETWEEN 1 AND 15 ONLY



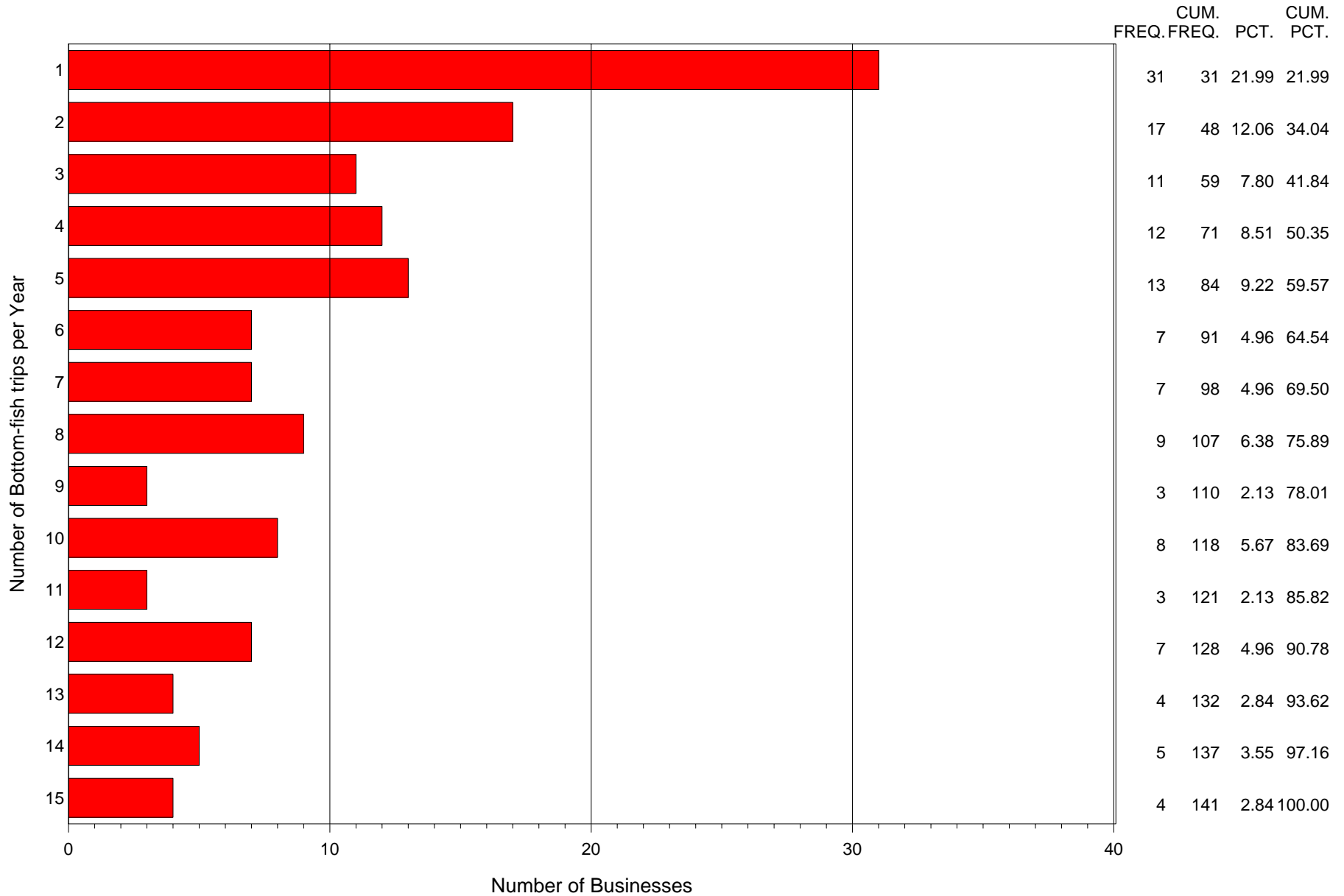
Summary of the number of bottom-fish trips per calendar year by individual businesses
for IPHC = 2C and Year= 2002

FOR BOTTOMFISH TRIPS PER YEAR BETWEEN 1 AND 15 ONLY



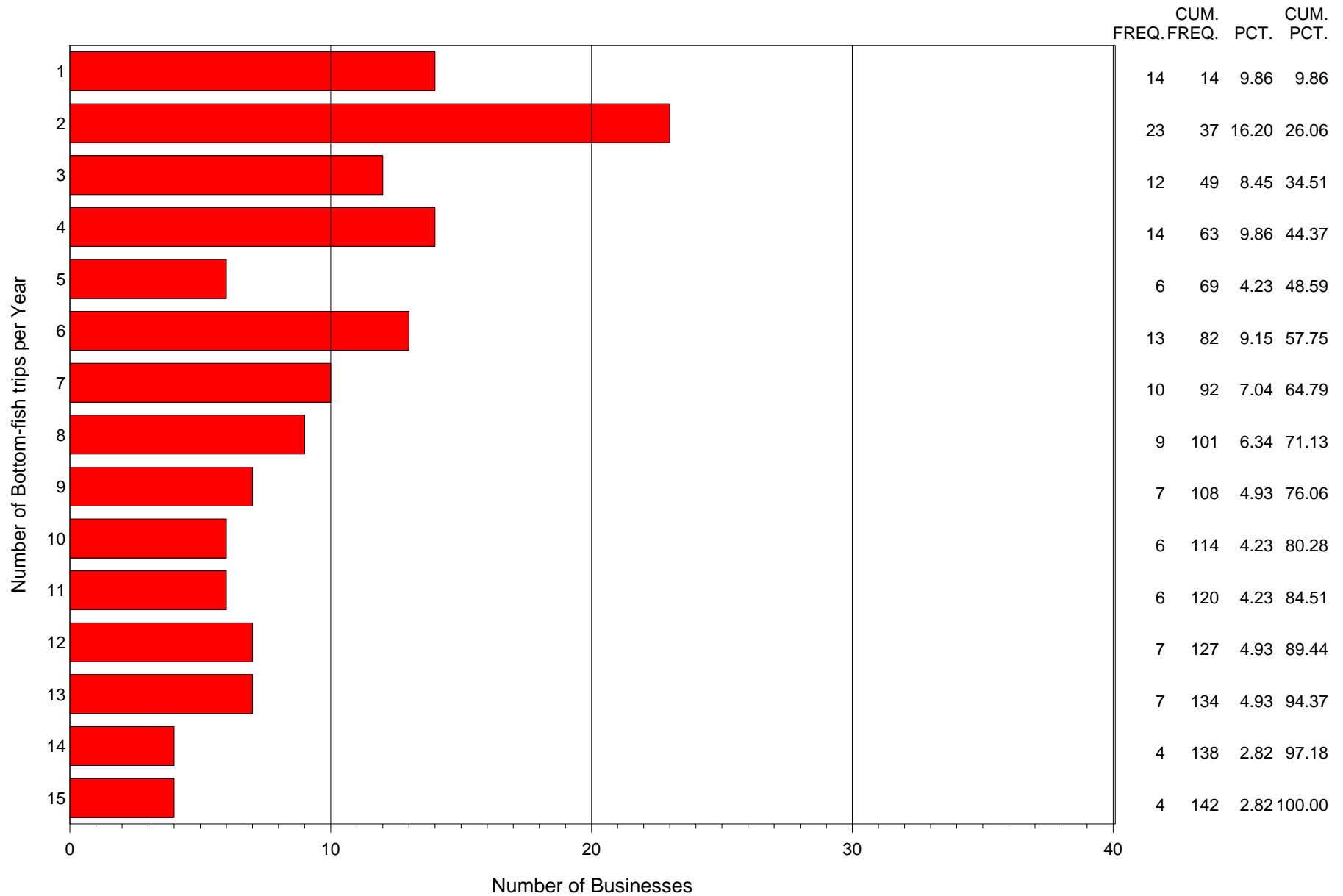
Summary of the number of bottom-fish trips per calendar year by individual businesses
for IPHC = 2C and Year= 2003

FOR BOTTOMFISH TRIPS PER YEAR BETWEEN 1 AND 15 ONLY



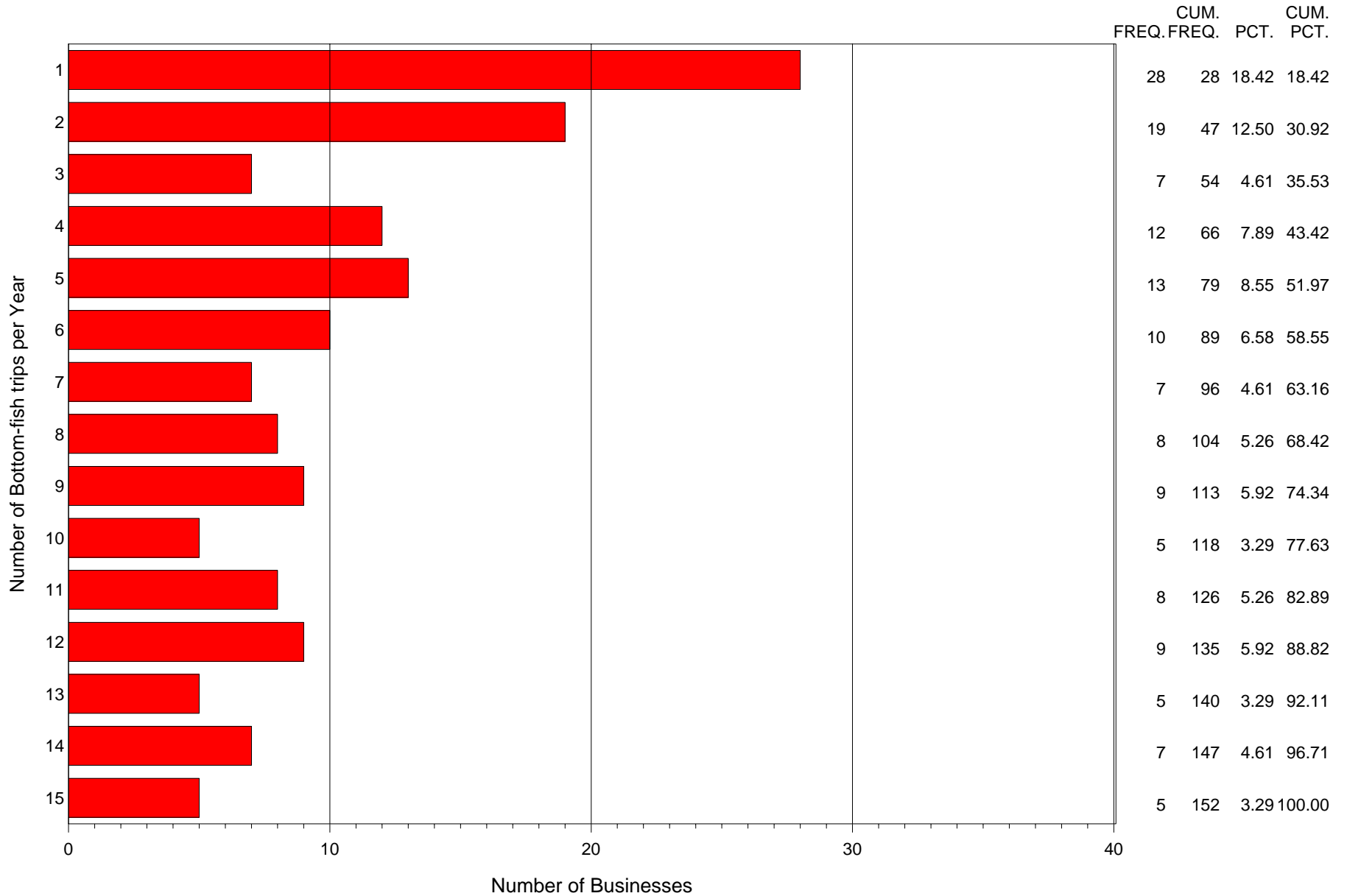
Summary of the number of bottom-fish trips per calendar year by individual businesses
for IPHC = 2C and Year= 2004

FOR BOTTOMFISH TRIPS PER YEAR BETWEEN 1 AND 15 ONLY



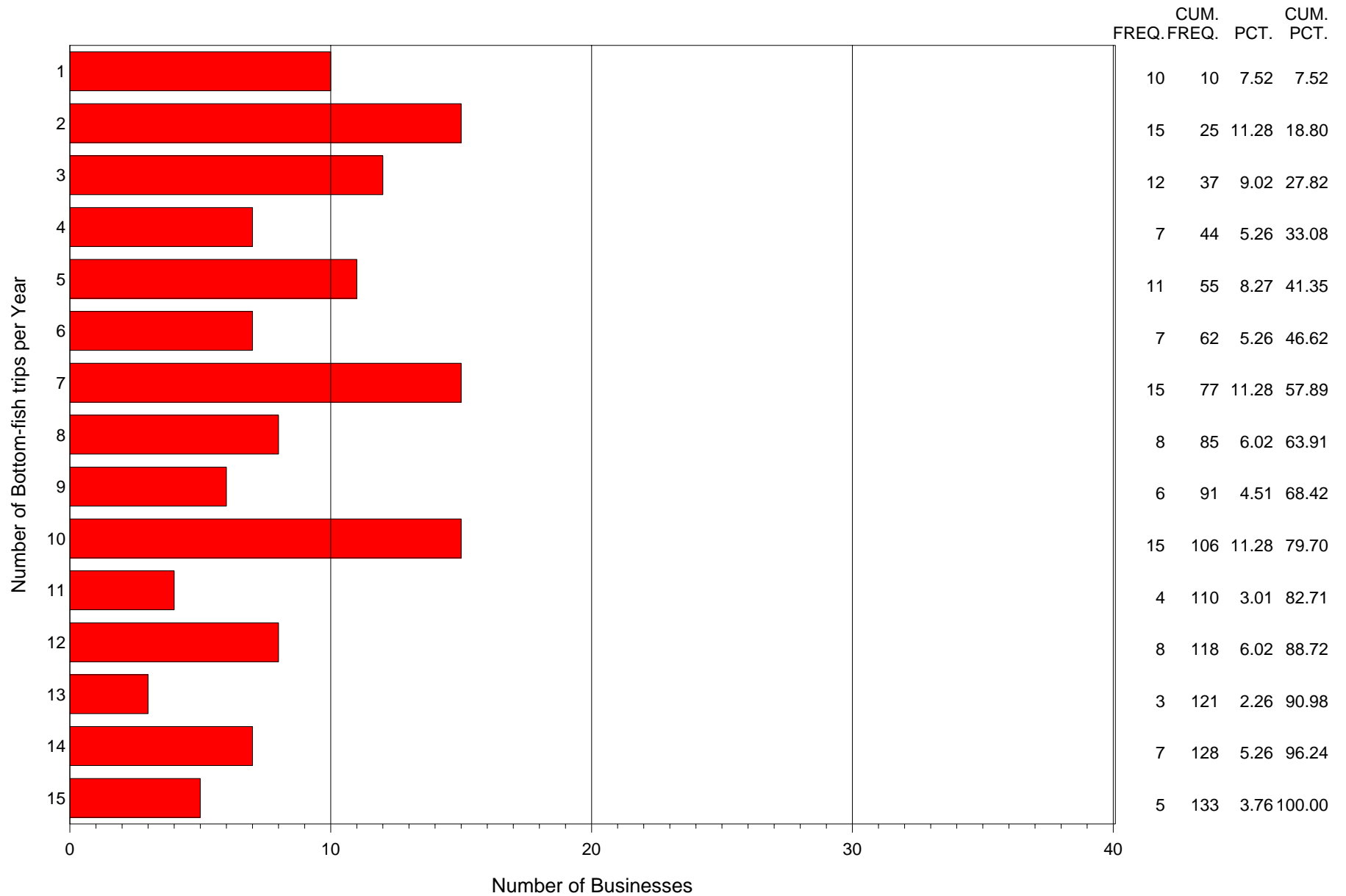
Summary of the number of bottom-fish trips per calendar year by individual businesses
for IPHC = 2C and Year= 2005

FOR BOTTOMFISH TRIPS PER YEAR BETWEEN 1 AND 15 ONLY



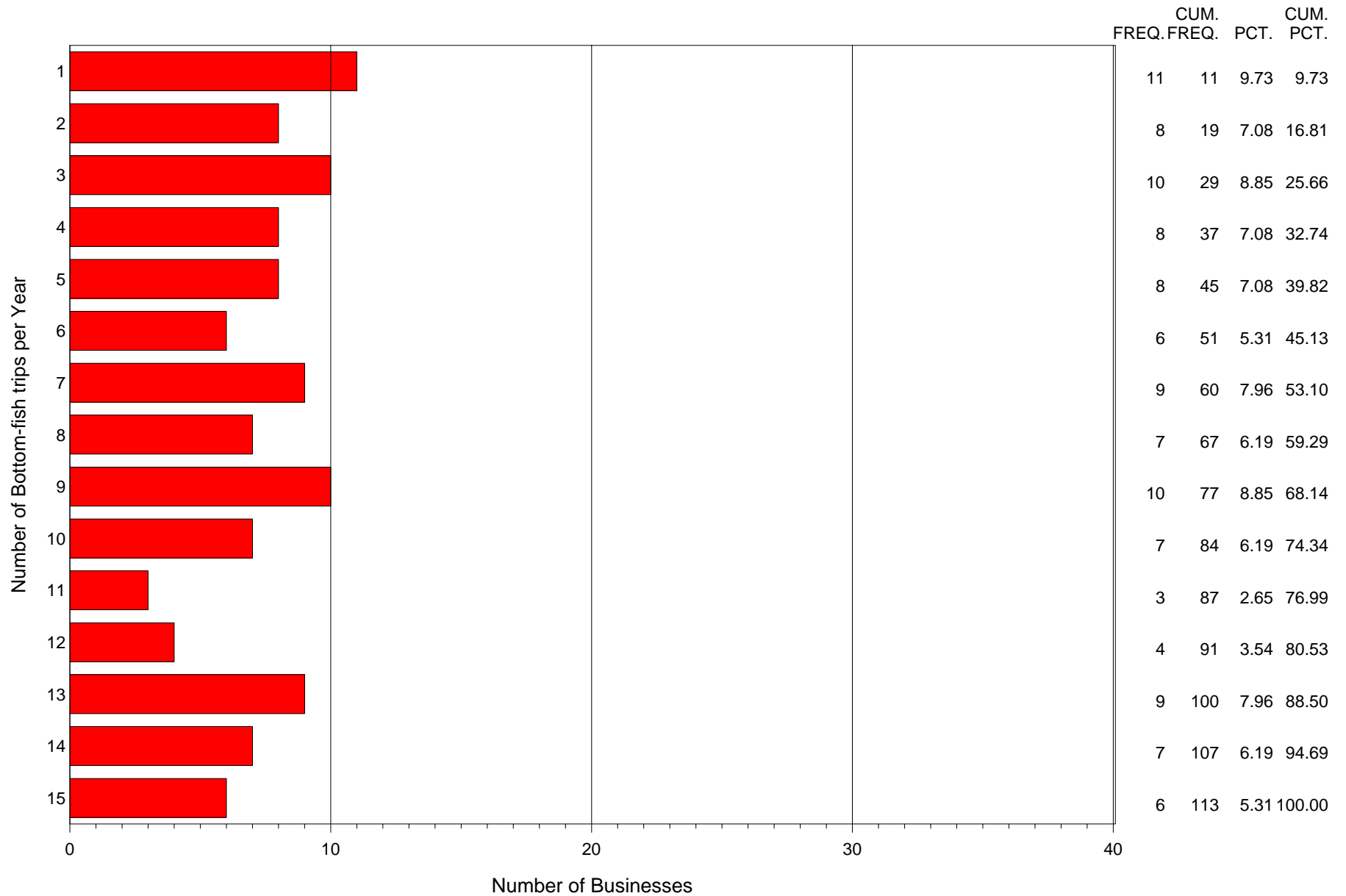
Summary of the number of bottom-fish trips per calendar year by individual businesses
for IPHC = 3A and Year= 1999

FOR BOTTOMFISH TRIPS PER YEAR BETWEEN 1 AND 15 ONLY



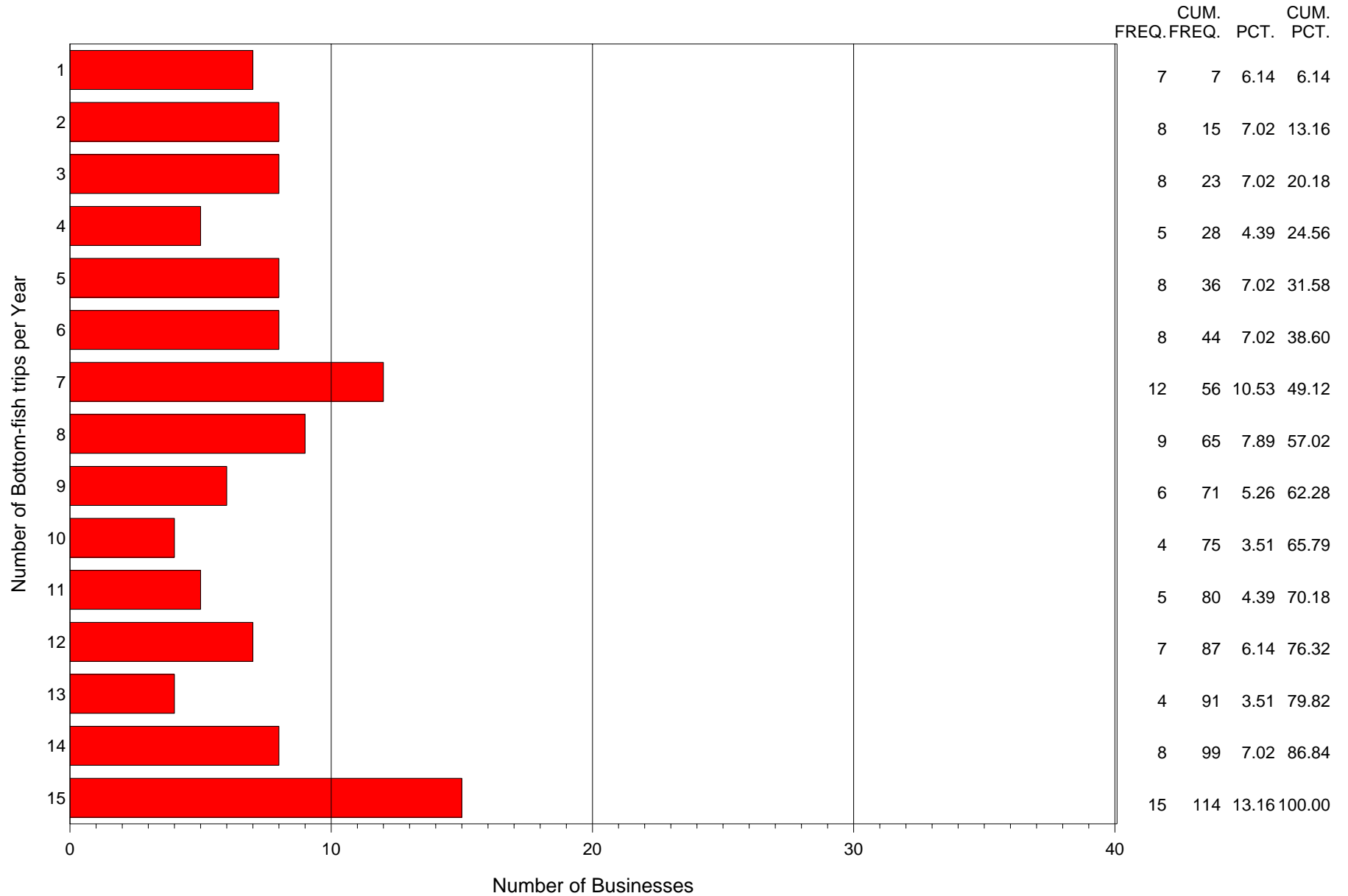
Summary of the number of bottom-fish trips per calendar year by individual businesses
for IPHC = 3A and Year= 2000

FOR BOTTOMFISH TRIPS PER YEAR BETWEEN 1 AND 15 ONLY



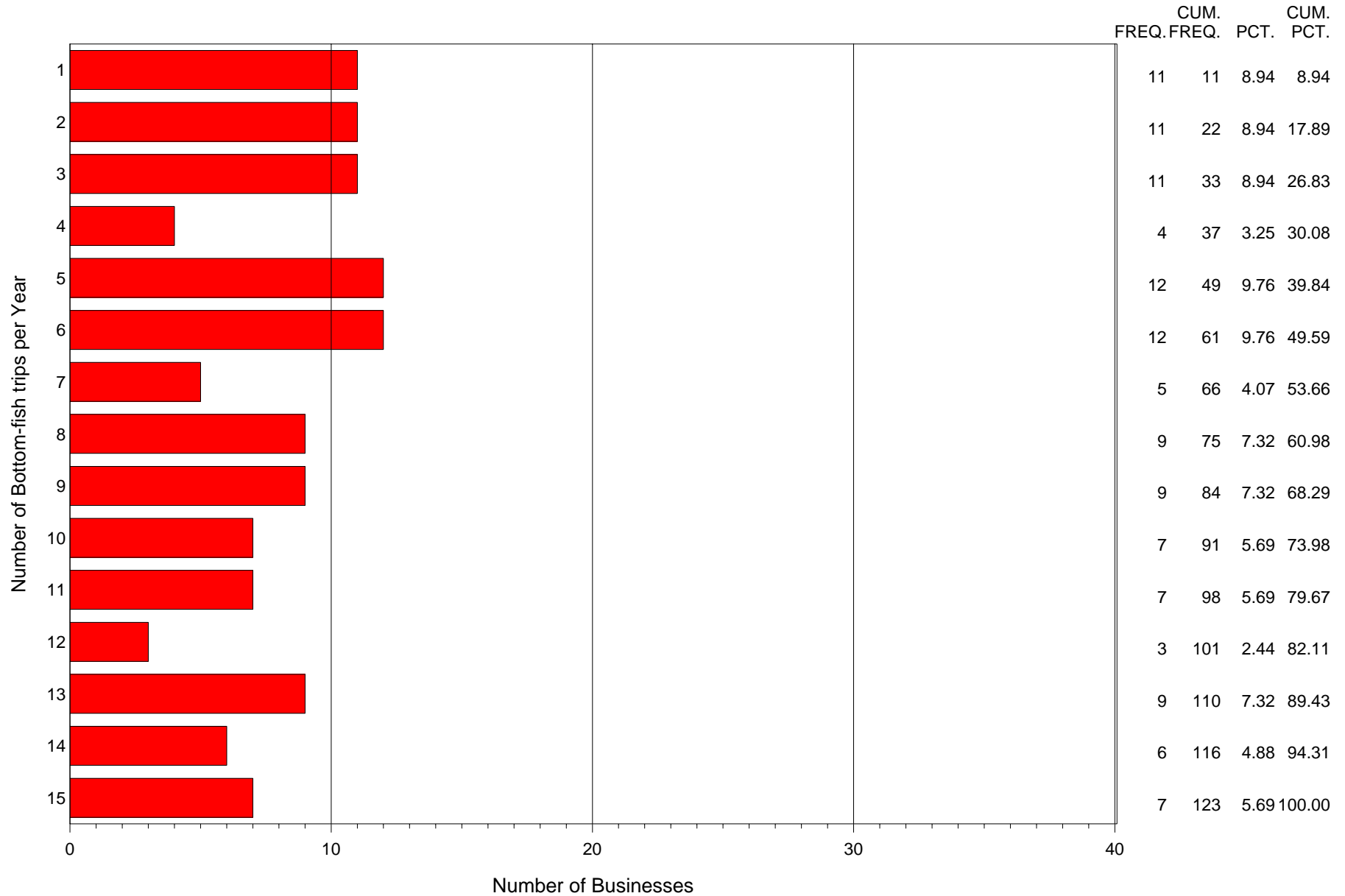
Summary of the number of bottom-fish trips per calendar year by individual businesses
for IPHC = 3A and Year= 2001

FOR BOTTOMFISH TRIPS PER YEAR BETWEEN 1 AND 15 ONLY



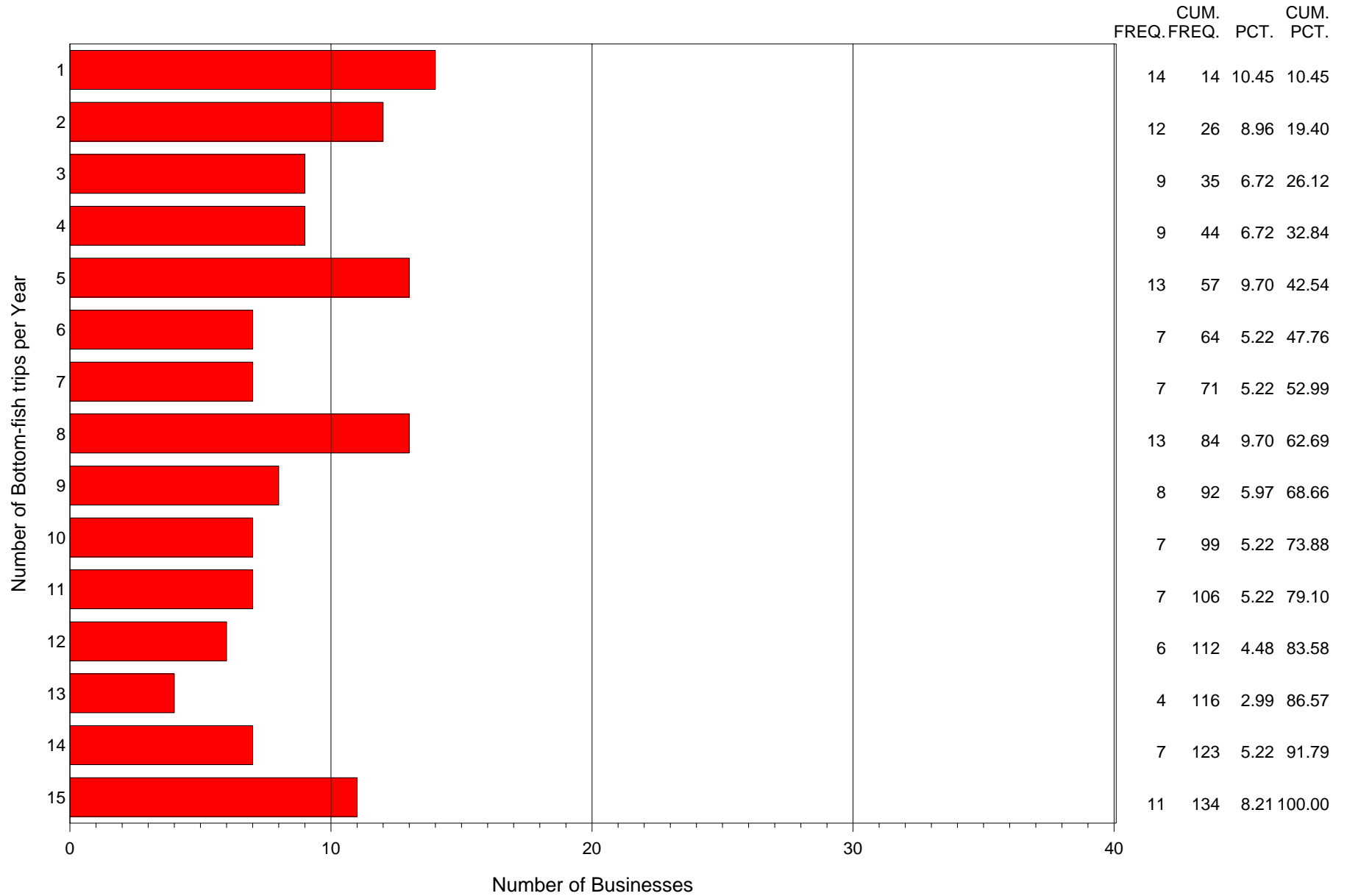
Summary of the number of bottom-fish trips per calendar year by individual businesses
for IPHC = 3A and Year= 2002

FOR BOTTOMFISH TRIPS PER YEAR BETWEEN 1 AND 15 ONLY



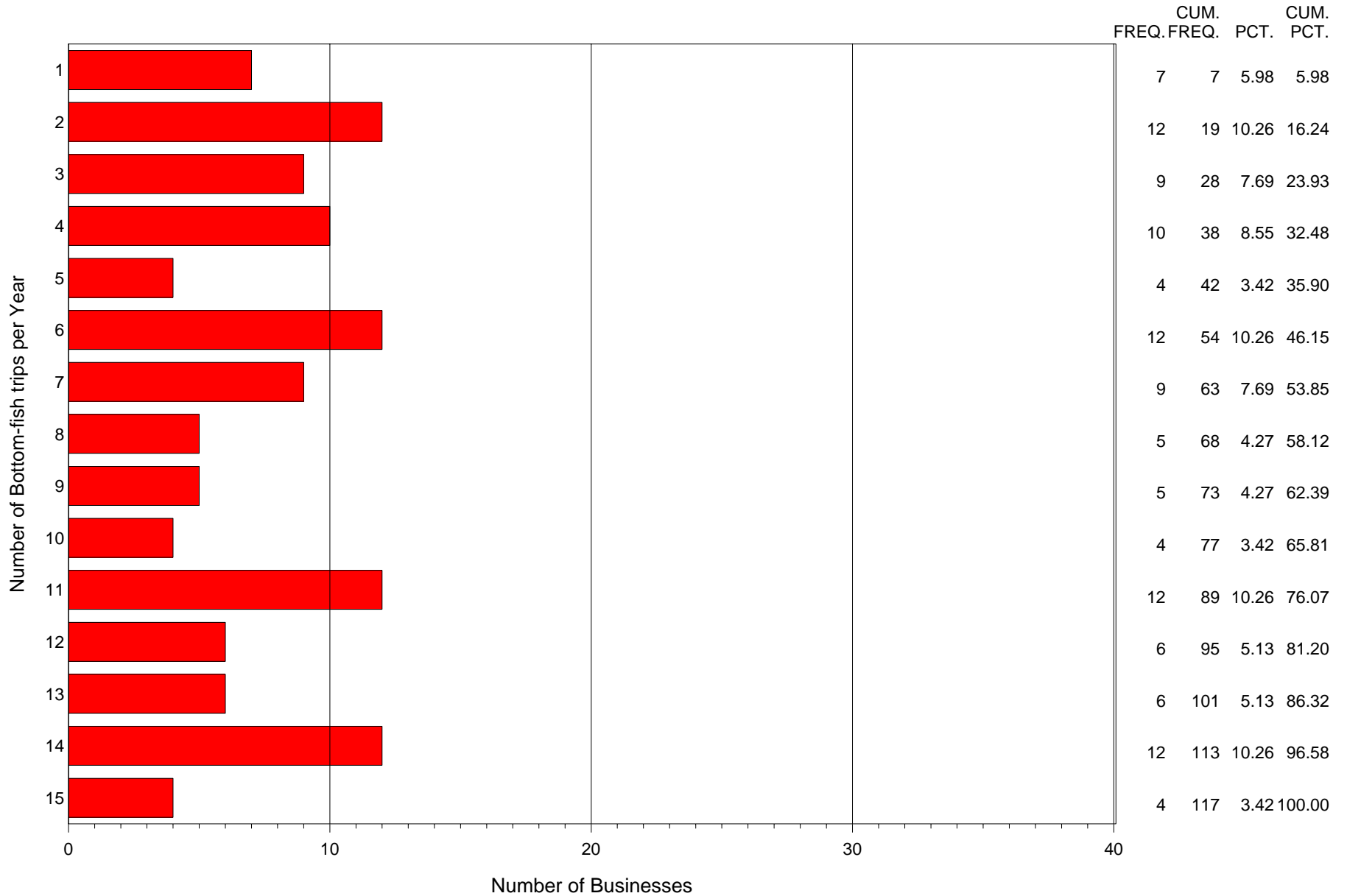
Summary of the number of bottom-fish trips per calendar year by individual businesses
for IPHC = 3A and Year= 2003

FOR BOTTOMFISH TRIPS PER YEAR BETWEEN 1 AND 15 ONLY



Summary of the number of bottom-fish trips per calendar year by individual businesses
for IPHC = 3A and Year= 2004

FOR BOTTOMFISH TRIPS PER YEAR BETWEEN 1 AND 15 ONLY



Summary of the number of bottom-fish trips per calendar year by individual businesses
for IPHC = 3A and Year= 2005

FOR BOTTOMFISH TRIPS PER YEAR BETWEEN 1 AND 15 ONLY

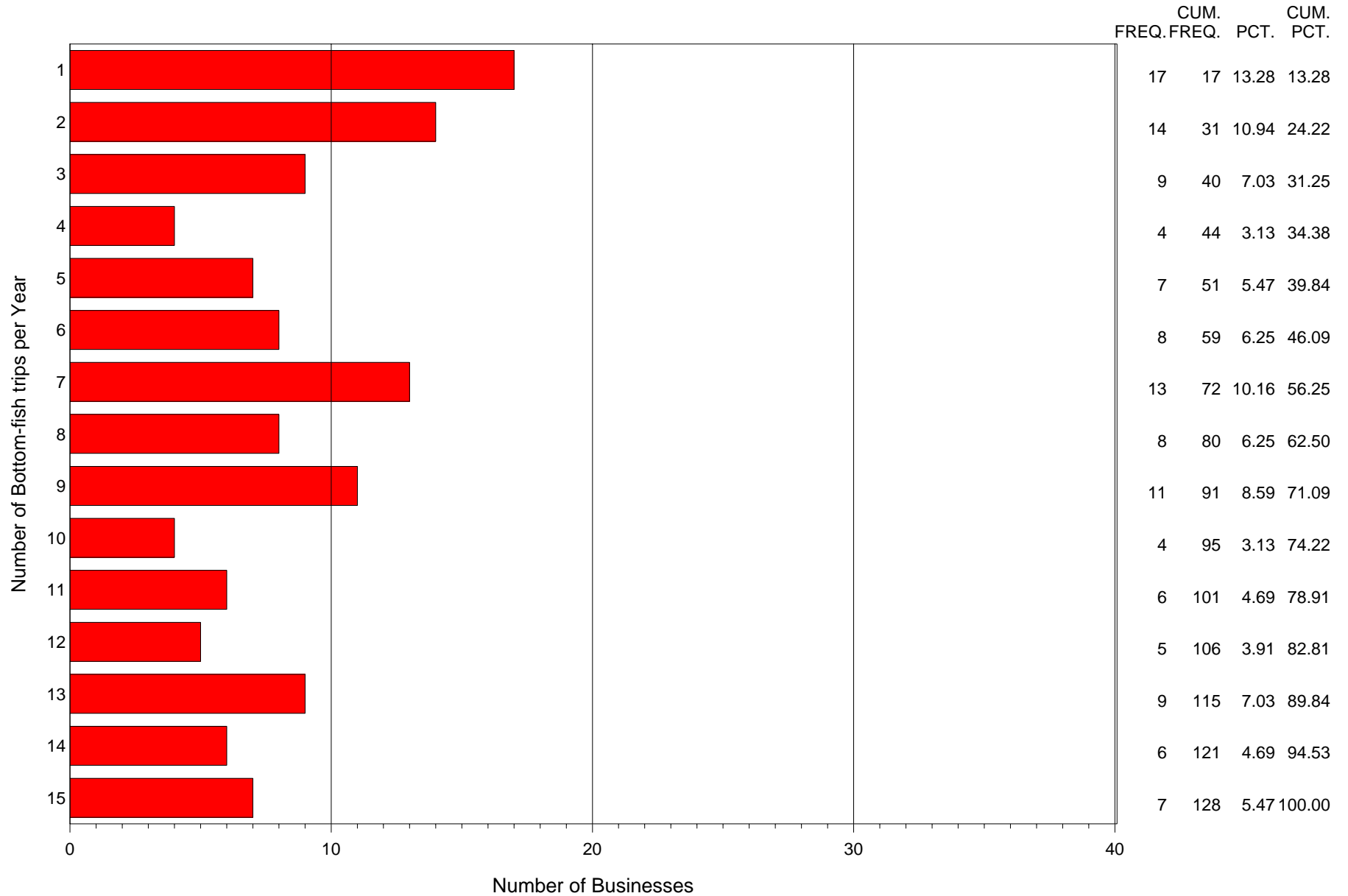


Table 2: Number of businesses that submitted ADF&G Saltwater Charter Vessel Logbooks with bottomfish effort in 1998 – 2004

IPHC Area	1998	1999	2000	2001	2002	2003	2004
Area 2C	370	387	412	386	351	353	365
Area 3A	411	454	456	452	405	405	427

Table 2 Notes:

Table 2 is compiled using the same algorithms as table 1 only bottom fish effort must be indicated and halibut landings are not part of the criteria.

Table 3: Number of businesses that are qualified for QS (businesses that submitted ADF&G Saltwater Charter Vessel Logbooks with halibut landings in 1998 and/or 1999 and bottomfish effort in 2000), and that submitted logbooks in 2001 – 2004 with bottomfish effort. (Non-cumulative participation)

IPHC Area	Number of businesses qualified for QS	Number of businesses qualified for QS AND that submitted logbooks in 2001 with bottomfish effort	Number of businesses qualified for QS AND that submitted logbooks in 2002 with bottomfish effort	Number of businesses qualified for QS AND that submitted logbooks in 2003 with bottomfish effort	Businesses qualified for QS AND that submitted logbooks in 2004 with bottomfish effort	
					Number of Businesses	% Qualified
Area 2C	339	272	235	225	218	64.3%
Area 3A	388	338	288	256	256	66.0%

Table 3 Notes:

Table 3 Part 1 shows the count of distinct ADF&G registration numbers (businesses) from 2000 that had at least one registration number association in 1999 OR a CFEC association in 1998 that had at least one halibut landing in the respective area (2C or 3A) - this would be the count of businesses that qualify for Quota Share.

Parts 2 – 5 show the counts that meet the QS criteria and also show participation in succeeding years (not cumulative) in which bottom fish effort was indicated without regard to actual halibut landing.

Table 4: Number of businesses that are qualified for QS (businesses that submitted ADF&G Saltwater Charter Vessel Logbooks with halibut landings in 1998 and/or 1999 and bottomfish effort in 2000), and that submitted logbooks in each year 2001 – 2004 with bottomfish landings. (Cumulative participation)

IPHC Area	Number of businesses qualified for QS	Number of businesses qualified for QS AND that submitted logbooks in 2001 with bottomfish effort	Number of businesses qualified for QS AND that submitted logbooks in 2001 and 2002 with bottomfish effort	Number of businesses qualified for QS AND that submitted logbooks in 2001, 2002, and 2003 with bottomfish effort	Number of businesses qualified for QS AND that submitted logbooks in 2001, 2002, 2003, and 2004 with bottomfish effort
Area 2C	339	272	224	195	179
Area 3A	388	338	280	239	223

Table 4 Notes:

Same as Table 3 only cumulative participation is shown for succeeding years.

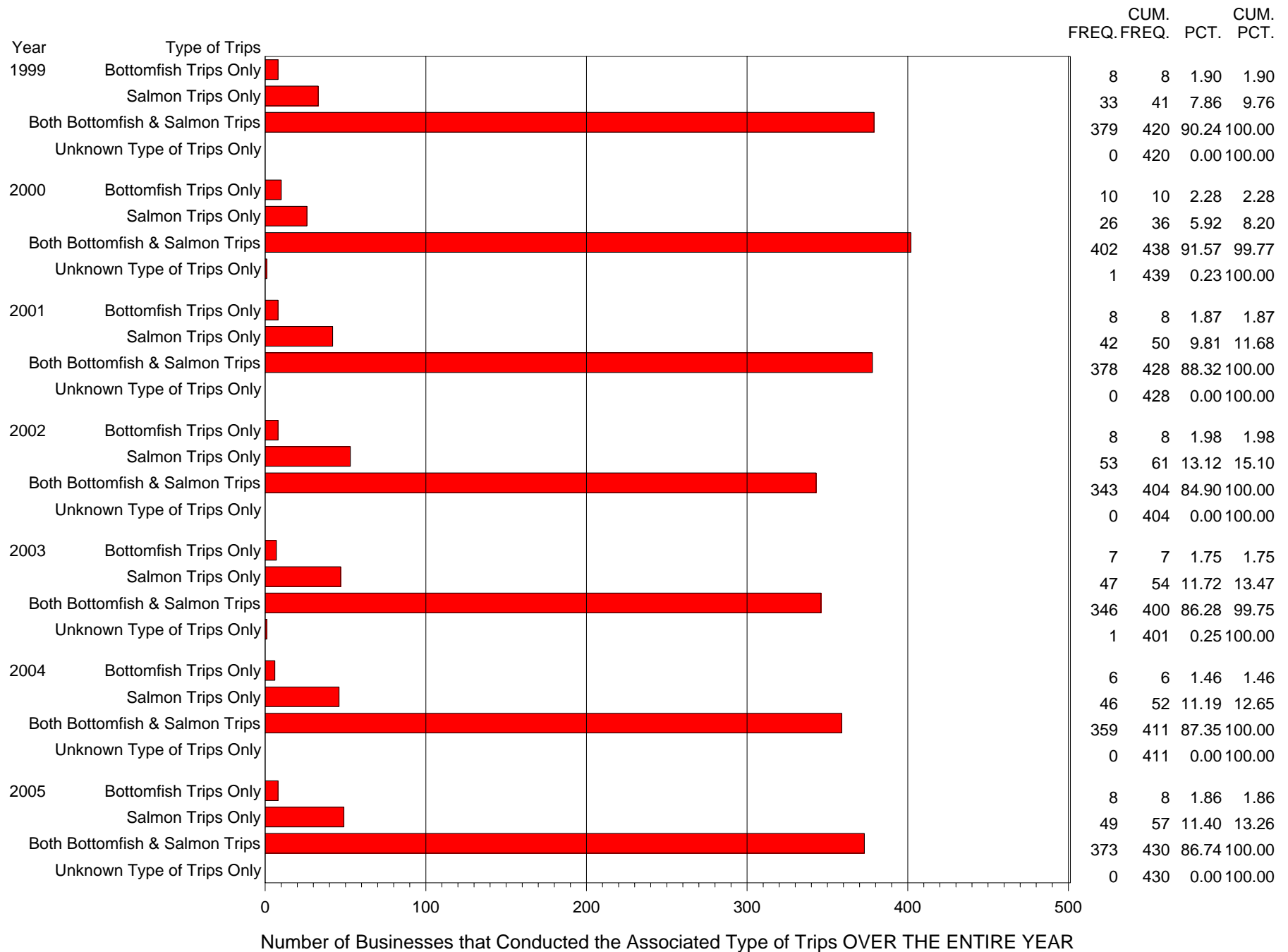
Table 5: Number of vessels that submitted ADF&G Saltwater Charter Vessel Logbooks with bottomfish effort in 1998 – 2004

IPHC Area	1998	1999	2000	2001	2002	2003	2004
Area 2C	569	591	634	627	567	590	624
Area 3A	503	545	570	560	491	499	532

Table 5 Notes:

Count of distinct CFEC numbers from the ADF&G Active Trips data for each year in which bottom fish effort was indicated for each respective area (2C or 3A) without regard to actual halibut landing.

Summary of the Number of Business Conducting the Associated Type of Trip OVER THE ENTIRE YEAR for IPHC = 2C



Summary of the Number of Business Conducting the Associated Type of Trip OVER THE ENTIRE YEAR for IPHC = 3A

