

Office of Basic Energy Sciences

Harriet Kung, Associate Director
 Vacant, Administrative Specialist

BES Budget and Planning
 Robert Astheimer, Technical Advisor
 Margie Davis, Budget Analyst

BES Operations
 Richard Burrow, DOE Technical Office Coordination
 Don Freeburn, DOE and Stakeholder Interactions
 Ken Rivera, Laboratory Infrastructure/ES&H
 Karen Talamini, Program Analyst/BESAC

Materials Sciences and Engineering Division

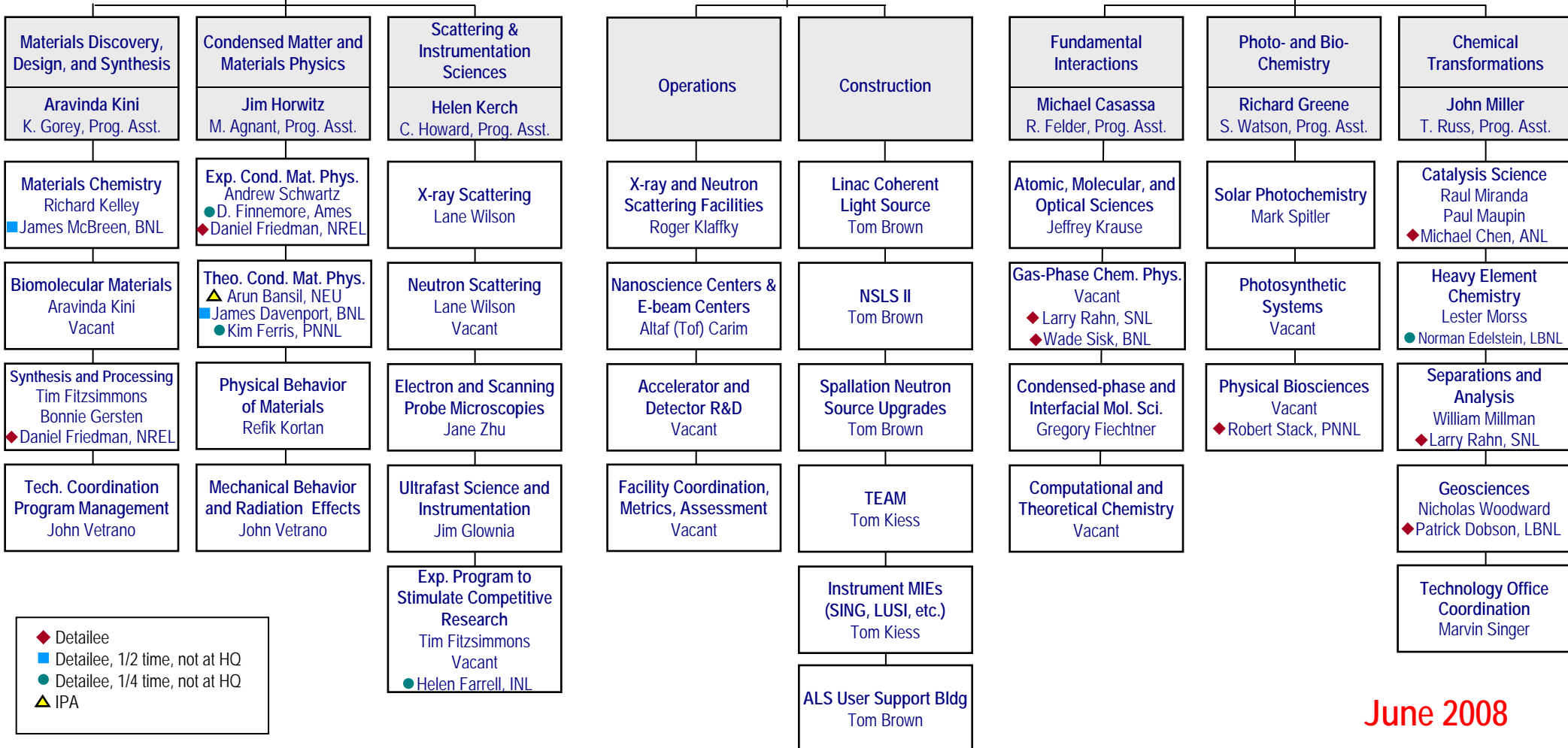
Aravinda Kini, Acting Director
 Christie Ashton, Program Analyst
 Charnice Waters, Secretary

Scientific User Facilities Division

Pedro Montano, Director
 Linda Cerrone, Program Support Specialist
 Rocio Meneses, Program Assistant

Chemical Sciences, Geosciences, and Biosciences Division

Eric Rohlfig, Director
 Diane Marceau, Program Analyst
 Michaelene Kyler-King, Program Assistant



◆ Detailee
 ■ Detailee, 1/2 time, not at HQ
 ● Detailee, 1/4 time, not at HQ
 ▲ IPA