

Financial Activity of House Incumbents  
Through June 30 of the Non-Election Year

Total Receipts	Democrats		Republicans		Median Receipts		
	Number	Receipts	Number	Receipts		Democrat	Republican
1993	258	\$21.1	176	\$12.9	1993	\$69,598	\$63,290
1995	202	\$17.4	232	\$28.1	1995	\$64,691	\$110,203
1997	207	\$22.1	227	\$30.8	1997	\$72,726	\$105,987
1999	211	\$34.1	223	\$43.7	1999	\$111,699	\$158,803
2001	210	\$37.8	220	\$45.2	2001	\$145,748	\$171,469
2003	205	\$40.7	228	\$52.1	2003	\$150,613	\$184,932
2005	204	\$48.8	224	\$67.7	2005	\$188,745	\$245,137
2007	228	\$80.3	199	\$55.2	2007	\$262,521	\$241,027

(millions of dollars)

Contributions from Individuals

	Democrat	Republican
1993	\$7.8	\$6.7
1995	\$7.5	\$14.2
1997	\$10.2	\$16.6
1999	\$16.5	\$23.5
2001	\$17.5	\$22.5
2003	\$21.1	\$27.0
2005	\$26.1	\$33.8
2007	\$37.0	\$28.1

(millions of dollars)

Median from Individuals

	Democrat	Republican
1993	\$16,130	\$24,855
1995	\$17,583	\$51,119
1997	\$25,090	\$51,893
1999	\$41,005	\$78,738
2001	\$50,927	\$78,935
2003	\$71,213	\$95,665
2005	\$83,720	\$116,217
2007	\$103,807	\$111,506

Contributions from PACs and other Committees

	Democrat	Republican
1993	\$11.7	\$5.3
1995	\$8.4	\$13.3
1997	\$10.8	\$12.8
1999	\$16.0	\$16.5
2001	\$17.8	\$19.1
2003	\$17.9	\$22.9
2005	\$21.6	\$31.6
2007	\$41.3	\$24.3

(millions of dollars)

Median from PACs

	Democrat	Republican
1993	\$39,303	\$25,772
1995	\$34,000	\$47,331
1997	\$43,666	\$45,450
1999	\$62,800	\$64,000
2001	\$75,650	\$75,461
2003	\$72,325	\$74,959
2005	\$86,055	\$104,825
2007	\$139,350	\$103,275

Cash on Hand on June 30

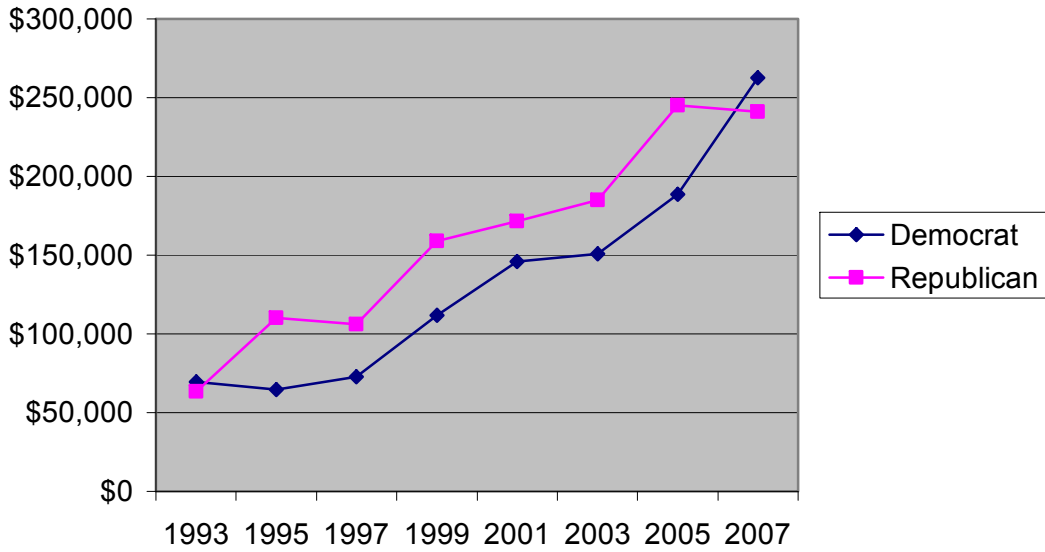
	Democrat	Republican
1993	\$32.7	\$19.4
1995	\$31.3	\$38.3
1997	\$33.3	\$50.1
1999	\$59.2	\$72.3
2001	\$74.6	\$79.8
2003	\$79.3	\$91.8
2005	\$94.7	\$115.7
2007	\$122.4	\$94.4

(millions of dollars)

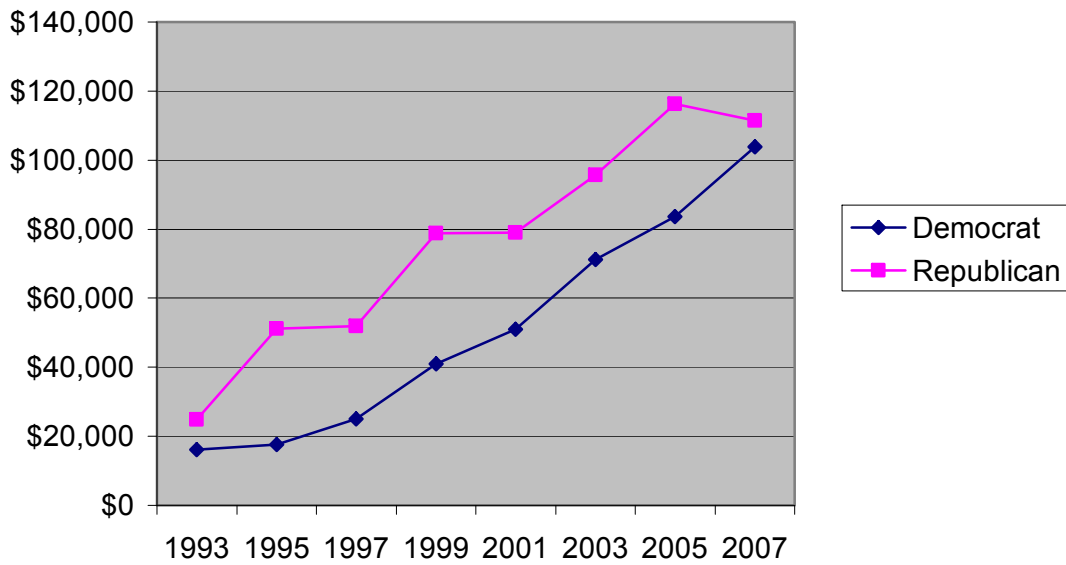
Median Cash on Hand

	Democrat	Republican
1993	\$51,157	\$58,142
1995	\$70,354	\$110,615
1997	\$91,810	\$144,711
1999	\$194,247	\$242,779
2001	\$255,416	\$272,134
2003	\$254,112	\$291,448
2005	\$331,976	\$372,188
2007	\$420,345	\$353,171

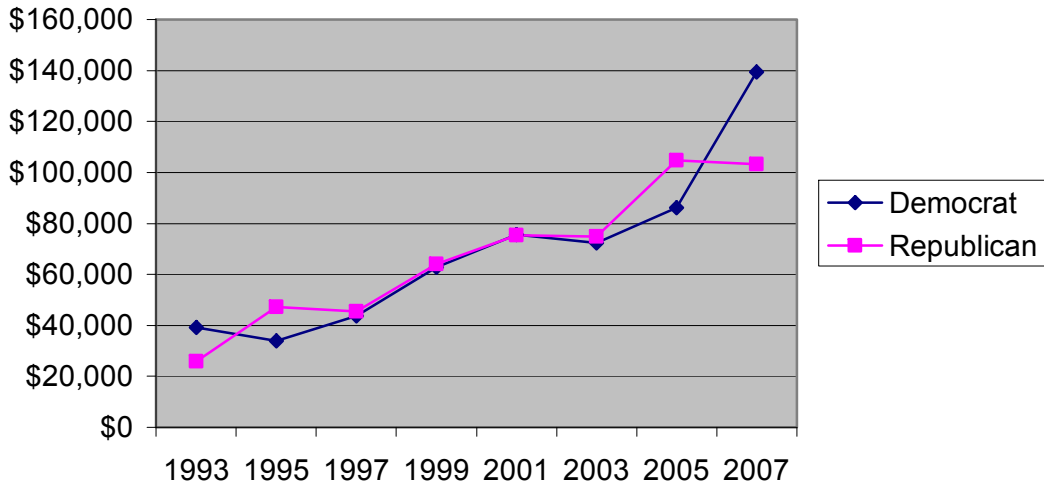
**Median Receipts of House Incumbents Through June 30 of the Non-Election Year**



**Median Contributions from Individuals to House Incumbents Through June 30 of the Non-Election Year**



**Median Contributions from PACs and Other Committees to House Incumbents Through June 30 of the Non-Election Year**



**Median Cash on Hand of House Incumbents as of June 30 of the Non-Election Year**

