

Financial Activity of House Freshmen
Through June 30 of the Non-Election Year

Total Receipts	Democrats		Republicans		Median Receipts		
	Number	Receipts	Number	Receipts		Democrat	Republican
1993	15	\$4.7	73	\$3.3	1993	\$69,783	\$69,369
1995	15	\$1.2	73	\$10.4	1995	\$72,971	\$123,104
1997	42	\$5.0	32	\$4.8	1997	\$115,228	\$146,833
1999	23	\$6.2	17	\$4.7	1999	\$253,812	\$256,609
2001	13	\$3.2	28	\$7.7	2001	\$275,433	\$232,592
2003	20	\$4.6	34	\$10.5	2003	\$206,607	\$268,265
2005	17	\$5.8	24	\$9.9	2005	\$251,888	\$395,712
2007	43	\$22.6	16	\$5.0	2007	\$499,360	\$218,760

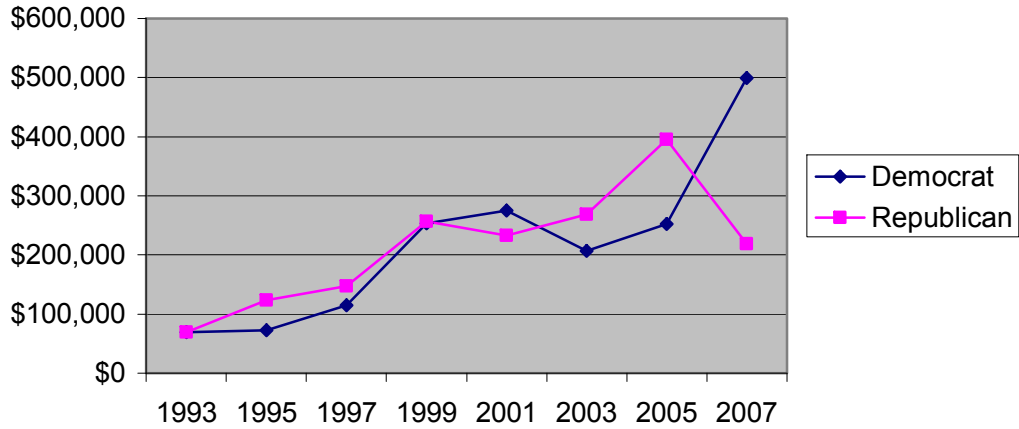
(millions of dollars)

Total Contributions from Individuals	Democrat		Republican		Median Contributions from Individuals		
						Democrat	Republican
1993		\$1.6		\$2.2	1993	\$15,550	\$36,128
1995		\$0.5		\$5.4	1995	\$29,676	\$62,405
1997		\$2.2		\$2.5	1997	\$45,901	\$68,945
1999		\$3.3		\$2.2	1999	\$127,050	\$121,763
2001		\$1.4		\$3.9	2001	\$126,211	\$125,268
2003		\$2.0		\$5.2	2003	\$79,416	\$129,941
2005		\$2.9		\$4.8	2005	\$121,446	\$177,682
2007		\$11.7		\$2.6	2007	\$194,142	\$119,057

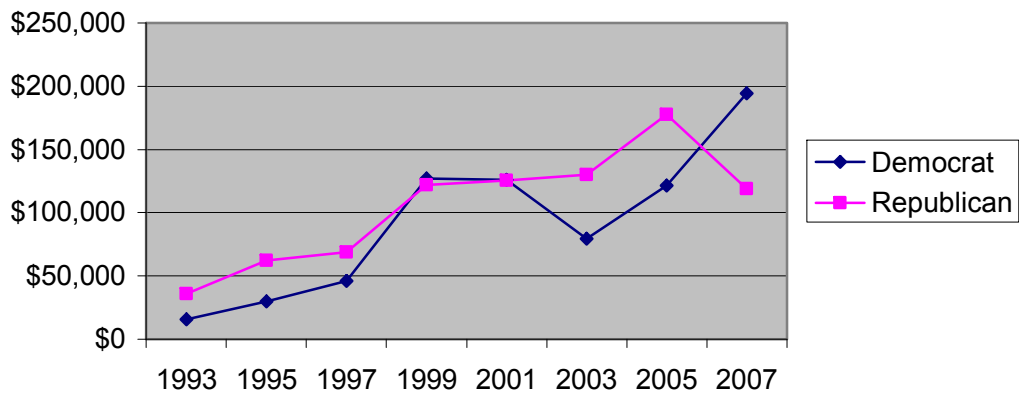
Total Contributions from PACs and Other Committees	Democrat		Republican		Median Contributions from PACs and Other Committees		
						Democrat	Republican
1993		\$2.7		\$1.0	1993	\$41,350	\$21,250
1995		\$0.5		\$4.4	1995	\$35,500	\$55,550
1997		\$2.5		\$2.1	1997	\$59,000	\$59,083
1999		\$2.7		\$2.0	1999	\$115,850	\$113,908
2001		\$1.6		\$3.7	2001	\$135,500	\$112,289
2003		\$2.3		\$4.9	2003	\$110,732	\$133,579
2005		\$2.7		\$4.9	2005	\$125,250	\$163,828
2007		\$10.4		\$2.0	2007	\$262,391	\$106,620

Total Cash on Hand	Democrat		Republican		Median Cash on Hand		
						Democrat	Republican
1993		\$1.7		\$1.4	1993	\$19,426	\$20,944
1995		\$1.1		\$5.9	1995	\$23,807	\$59,698
1997		\$3.1		\$3.5	1997	\$59,925	\$81,938
1999		\$5.2		\$3.6	1999	\$201,371	\$212,800
2001		\$2.6		\$6.2	2001	\$172,990	\$187,852
2003		\$3.0		\$8.2	2003	\$148,424	\$241,615
2005		\$4.7		\$8.5	2005	\$154,174	\$303,139
2007		\$19.2		\$4.1	2007	\$432,418	\$207,322

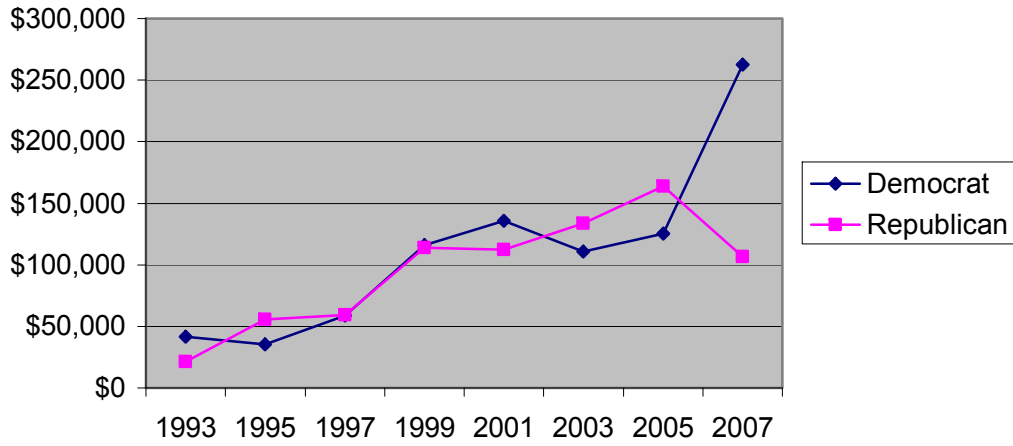
Median Receipts of House Freshmen Through June 30 of the Non-Election Year



Median Contributions from Individuals to House Freshmen Through June 30 of the Non-Election Year



Median Contributions from PACs and Other Committees to House Freshmen Through June 30 of the Non-Election Year



Median Cash on Hand of House Freshmen as of June 30 of the Non-Election Year

