

Figure 1: Example of HOMER output graphic. The column on the left provides a diagram showing the load characteristics and the types of equipment considered to meet the load. The optimal system design graphic shows the range within specified diesel fuel prices and wind energy resources for which various system types are most economical (e.g., a wind/diesel/battery system becomes the most optimal configuration to meet the load requirement for wind speeds greater than 5 m/s and fuel costs at 0.45 to 0.75\$/l).

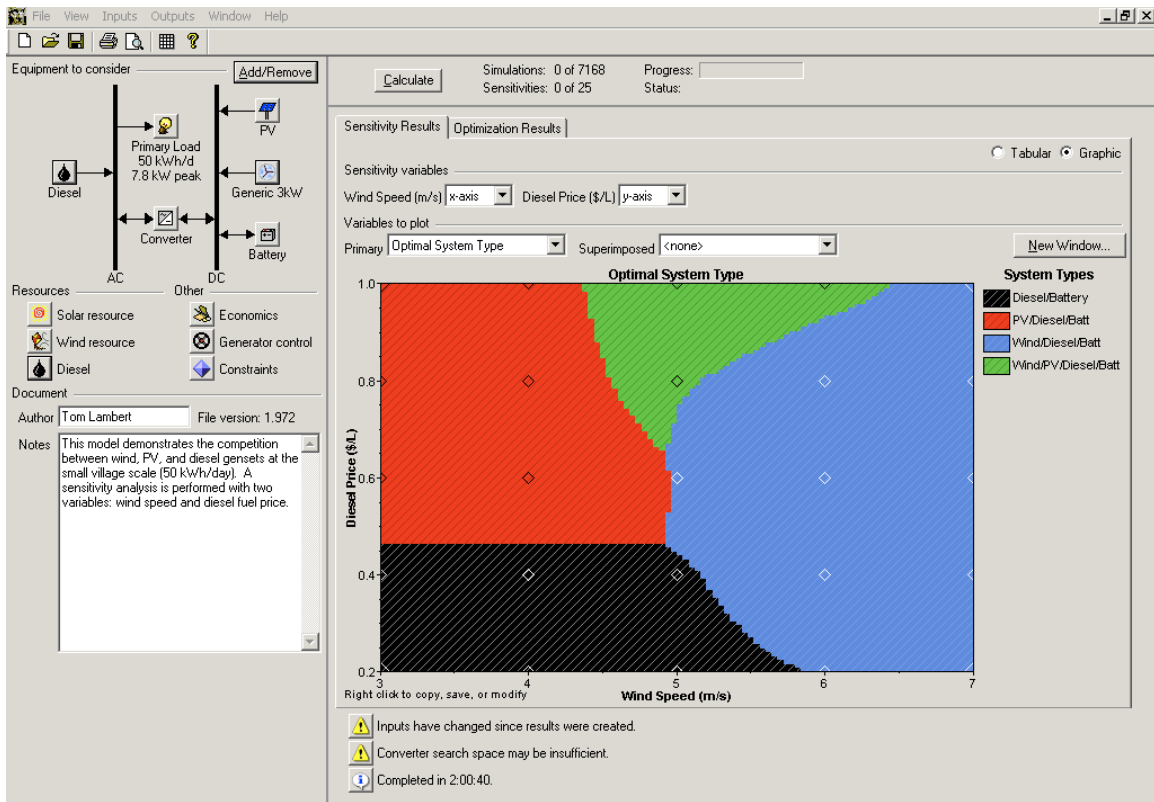


Figure 2. Example of ocean wind resource assessment output for the offshore regions of Pakistan. These data were derived from the SeaWinds scatterometer aboard NASA's QuickSCAT satellite. The assessment provides estimated mean annual wind speeds at 10-m above the ocean surface, averaged over the period 1988 to 2002.

