



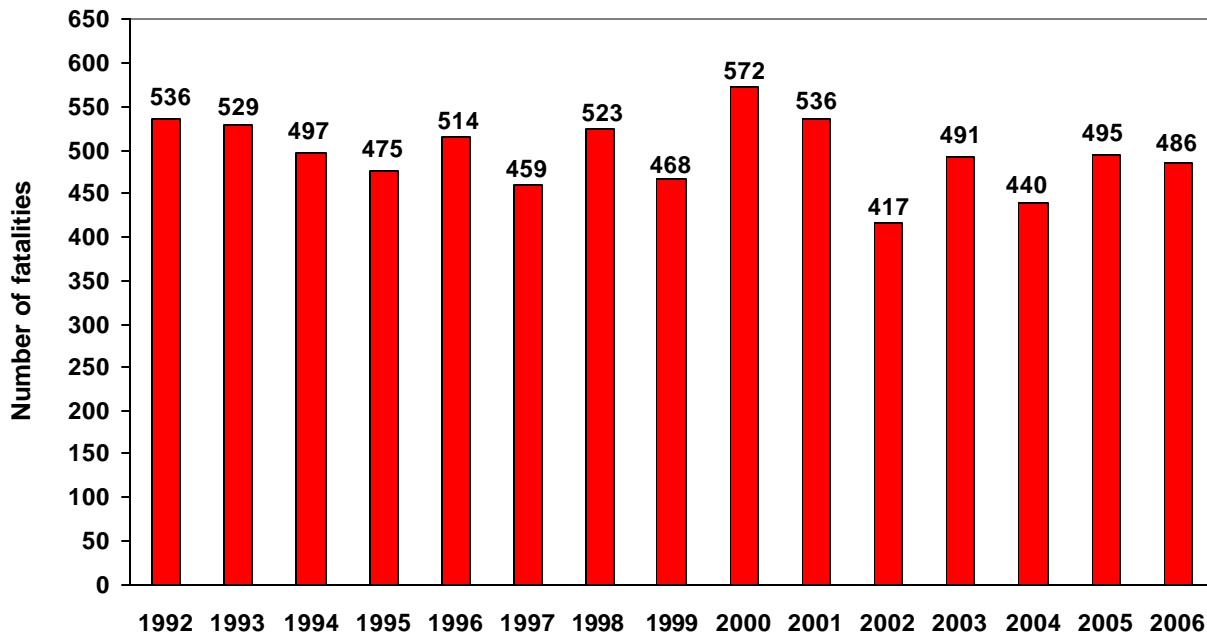
FOR FURTHER INFORMATION:  
Cheryl Abbot  
Regional Economist  
(214) 767-6970  
<http://www.bls.gov/ro6/home.htm>

FOR RELEASE:  
September 11, 2007

## TEXAS WORKPLACE FATALITIES IN 2006

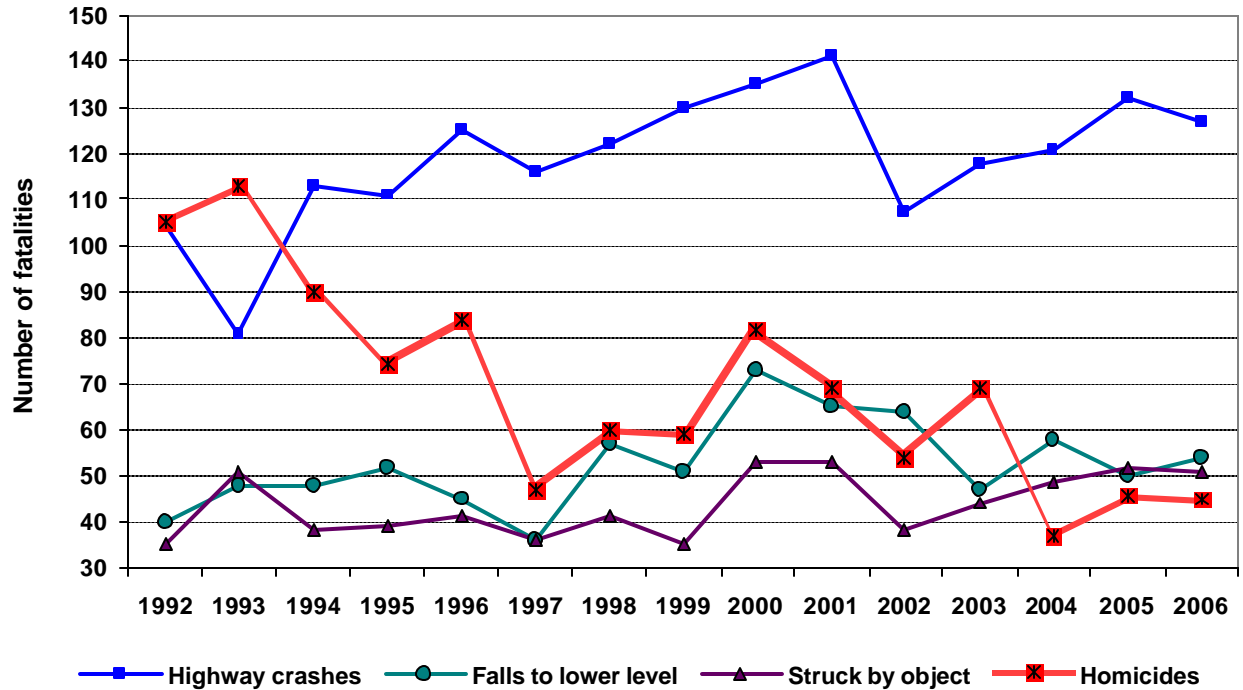
A total of 486 fatal work injuries were recorded in Texas during 2006, down slightly from the 495 that occurred in the previous year, according to the Bureau of Labor Statistics of the U.S. Department of Labor. Regional Commissioner Stanley W. Suchman noted that this was well below the State high of 572 reached in 2000. (See chart A.) Nationally, fatal job injuries also dipped slightly in 2006, to a level of 5,703 as 24 states reported fewer deaths.

**Chart A. Total work-related fatalities in Texas by year, 1992-2006**



The most frequent events leading to workplace fatalities in Texas in 2006 were highway crashes (127), falls to a lower level (54), being struck by an object (51), and homicides (45). (See chart B.) Combined, these four events<sup>1</sup> accounted for 57 percent of all work-related fatalities in the State. These data are from the Census of Fatal Occupational Injuries (CFOI) which was first conducted in 1992.

<sup>1</sup> Fatal events are categorized into several major groupings including transportation incidents, assaults and violent acts, and falls. These major groups are further broken down into more detailed groups. For example, transportation incidents include highway incidents, commonly referred to as crashes, and aircraft incidents; assaults and violent acts include homicides and suicides; and falls include falls to a lower level (as from a roof or ladder) and falls on the same level.

**Chart B. The four most frequent work-related fatal events in Texas, 1992-2006**

Highway crashes remained the most frequent type of fatal workplace event for both the State and the nation in 2006. In Texas, highway crashes have led all other fatal events since 1994. Nationally, this event has led all others since the program's inception in 1992. The 127 fatal injuries resulting from highway incidents in Texas accounted for 26 percent of the statewide total in 2006. In the U.S., highway incidents accounted for 23 percent of work-related deaths. (See tables A and B.)

Occupational fatalities caused by falls to a lower level rose by four cases in 2006, the only event to register an increase among the top four categories in Texas. The 54 work-related deaths represented 11 percent of all workplace fatalities in Texas; this event accounted for 13 percent of the national total.

Fifty-one fatalities in Texas resulted from workers being struck by an object in 2006, about the same as in the previous year. These types of fatal work injuries accounted for 10 percent of on-the-job fatalities in both the State and the nation.

Homicides accounted for 9 percent of on-the-job deaths at the statewide level as well as for the nation. The number of work-related homicides (45) in the State in 2006, was little changed over the year. In fact, the number of homicides has remained under 50 in each of the last three years, well below the peak level of 113 reached in 1993 when homicides accounted for 21 percent of all fatal work injuries in Texas. Nationwide, the number of workplace homicides fell to 516 in 2006, its lowest level since the fatality census was first conducted.

Some of the other fatal events in the State in 2006 recorded notable increases or series highs. Fatal work injuries due to pedestrian incidents (42) and being caught in or compressed by equipment and objects (28) both registered their highest levels since these series began in 1992. The 18 fatalities in Texas from non-highway transportation fatalities (except rail, air, and water) in 2006 were the highest on record since 1999. (See table 1.)

In contrast, fatalities resulting from fires and explosions, as well as electrocutions, fell over the year – from 31 in 2005 to 23 in 2006. Work-related fatal injuries among the less frequent events also fell in 2006, as fatalities caused by exposure to caustic, noxious, or allergic substances (13), self inflicted injuries (13) and aircraft incidents (6) declined from 2005 levels.

**Table A. Distribution of fatal occupational injuries in Texas by selected event, 1992-2006**

Year	Total fatalities	Highway crashes		Falls to lower level		Struck by object		Homicides	
		Number	Percent	Number	Percent	Number	Percent	Number	Percent
1992	536	104	19	40	7	35	7	105	20
1993	529	81	15	48	9	51	10	113	21
1994	497	113	23	48	10	38	8	90	18
1995	475	111	23	52	11	39	8	74	16
1996	514	125	24	45	9	41	8	84	16
1997	459	116	25	36	8	36	8	47	10
1998	523	122	23	57	11	41	8	60	11
1999	468	130	28	51	11	35	7	59	13
2000	572	135	24	73	13	53	9	82	14
2001	536	141	26	65	12	53	10	69	13
2002	417	107	26	64	15	38	9	54	13
2003	491	118	24	47	10	44	9	69	14
2004	440	121	28	58	13	49	11	37	8
2005	495	132	27	50	10	52	11	46	9
2006	486	127	26	54	11	51	10	45	9

**Table B. Distribution of fatal occupational injuries in the United States by selected event, 1992-2006**

Year	Total fatalities	Highway crashes		Falls to lower level		Struck by object		Homicides	
		Number	Percent	Number	Percent	Number	Percent	Number	Percent
1992	6,217	1,158	19	507	8	557	9	1,044	17
1993	6,331	1,242	20	534	8	565	9	1,074	17
1994	6,632	1,343	20	580	9	591	9	1,080	16
1995	6,275	1,346	21	578	9	547	9	1,036	17
1996	6,202	1,346	22	610	10	582	9	927	15
1997	6,238	1,393	22	653	10	579	9	860	14
1998	6,055	1,442	24	625	10	520	9	714	12
1999	6,054	1,496	25	634	10	585	10	651	11
2000	5,920	1,365	23	659	11	571	10	677	11
2001 <sup>1</sup>	5,915	1,409	24	700	12	553	9	643	11
2002	5,534	1,373	25	638	12	505	9	609	11
2003	5,575	1,353	24	604	11	531	10	632	11
2004	5,764	1,398	24	738	13	602	10	559	10
2005 <sup>2</sup>	5,734	1,437	25	664	12	607	11	567	10
2006	5,703	1,329	23	728	13	583	10	516	9

<sup>1</sup>Totals for 2001 exclude fatalities due to the September 11, 2001 terrorist attacks.

<sup>2</sup>The BLS news release issued August 10, 2006, reported a total of 5,702 fatal work injuries for calendar year 2005. Since then, an additional 32 job-related fatalities were identified, bringing the total job-related fatality count for 2005 to 5,734.

NOTE: Totals for 2006 are preliminary.

Nationwide, a total of 5,703 fatal work injuries were reported in 2006, down slightly from the revised total of 5,734 fatalities reported for 2005. The 2006 U.S. total was the third lowest level recorded by the fatality census since its inception in 1992. (See table B.) Although fatal highway incidents were down from a year ago, these events continued to be the leading cause of on-the-job fatalities nationally. Deaths from such incidents totaled 1,329 in 2006, representing almost one out of every four fatal work injuries. Fatalities caused by falls to a lower level increased by 10 percent to a total of 728, the second highest level for this category. On-the-job deaths resulting from being struck by an object totaled 583 in 2006, down from a record high of 607 in 2005. The number of workplace homicides recorded in the United States in 2006, 516, dropped 9 percent from the previous year's total and reached its lowest annual total yet recorded by the fatality census. Overall, workplace homicides have decreased more than 50 percent from the high of 1,080 recorded in 1994 (excluding the fatalities resulting from the terrorist attacks of September 11, 2001).

### **Key characteristics of fatal work injuries in Texas:**

- Men accounted for 94 percent (457) of the work-related fatalities in Texas. Transportation incidents, which include highway, nonhighway, pedestrian, air, water, and rail fatalities, accounted for 41 percent of these deaths and contact with objects and equipment made up 19 percent. Twenty-nine women were fatally injured on-the-job, primarily as a result of assaults and violent acts and transportation incidents. Combined, these two events accounted for 83 percent of all worker fatalities among females. (See table 2.)
- In Texas, 53 percent of those who died from a workplace injury were non-Hispanic whites; 35 percent were Hispanics or Latinos; 8 percent were non-Hispanic blacks; and 4 percent were Asians. The most frequent cause of death among each of these worker groups, except Asians, was transportation incidents. For Asians, the primary cause of death was assaults and violent acts which accounted for 12 of the 18 total fatalities.
- Workers 25-54 years old – the prime working age group – made up slightly more than two-thirds (332) of the State's on-the-job fatalities in 2006.
- Eighty percent of workers killed on-the-job in Texas worked for wages and salaries and the remaining 20 percent were self-employed.
- Two industry sectors made up 41 percent of the workplace fatalities in the State — construction, with 131 deaths, and transportation and warehousing, with 66. Transportation incidents and falls each accounted for a little more than one-fourth of the construction industry fatalities. Exposure to harmful substances or environments accounted for slightly more than one-fifth of work-related deaths in construction. In the transportation and warehousing industry, transportation incidents were the most prevalent cause of workplace deaths, accounting for more than two-thirds of all fatal injuries. (See table 3.)
- Construction and extraction jobs and transportation and material moving jobs led all other occupational groups with 140 and 123 worker fatalities, respectively. Combined, these two occupational groups accounted for 54 percent of all fatal work injuries in Texas. Among construction and extraction workers, transportation incidents (40), falls (34), exposure to harmful substances or environments (29), and contact with objects and equipment (27) were the most frequent events leading to on-the-job fatalities. Within transportation and material moving occupations, transportation incidents (86) accounted for 70 percent of all fatal injuries; contact with objects and equipment (20) accounted for 16 percent. (See table 4.)

Additional Census of Fatal Occupational Injuries data are available on the BLS Internet site at <http://www.bls.gov/iif/oshcfoi1.htm>. Data can be accessed in a number of ways. Selected current and historical information is available in PDF format. Detailed data may be accessed through the online query system located at <http://data.bls.gov/PDQ/outside.jsp?survey=fi> or via an extensive collection of flat text files. The Southwest Information Office can provide assistance accessing any of these files by calling (214) 767-6970.

## **TECHNICAL NOTE**

### **Background of the program**

The Census of Fatal Occupational Injuries, part of the BLS occupational safety and health statistics program, compiles a count of all fatal work injuries occurring in the U.S. in each calendar year. The program uses diverse State and Federal data sources to identify, verify, and describe fatal work injuries. Information about each workplace fatality (industry, occupation, and other worker characteristics; equipment being used; and circumstances of the event) is obtained by cross-referencing source documents, such as death certificates, workers' compensation records, news accounts, and reports to Federal and State agencies. This method assures counts are as complete and accurate as possible.

### **Definitions**

For a fatality to be included in the census, the decedent must have been employed (that is working for pay, compensation, or profit) at the time of the event, engaged in a legal work activity, or present at the site of the incident as a requirement of his or her job. Fatalities to volunteer and unpaid family workers who perform the same duties and functions as paid workers are also included in the counts. These criteria are generally broader than those used by Federal and State agencies administering specific laws and regulations. (Fatalities that occur during a person's normal commute to or from work are excluded from the census counts.)

Data presented in this release include deaths occurring in 2006 that resulted from traumatic occupational injuries. An injury is defined as any wound or damage to the body resulting from acute exposure to energy, such as heat, electricity, or impact from a crash or fall, or from the absence of such essentials as heat or oxygen caused by a specific event or incident within a single workday or shift. Included are open wounds, intracranial and internal injuries, heatstroke, hypothermia, asphyxiation, acute poisonings resulting from short-term exposures limited to the worker's shift, suicides and homicides, and work injuries listed as underlying or contributory causes of death.

Information on work-related fatal illnesses is not reported in the BLS census and is excluded from the attached tables because the latency period of many occupational illnesses and the difficulty of linking illnesses to work exposures make identification of a universe problematic.

### **Measurement techniques and limitations**

Data for the Census of Fatal Occupational Injuries are compiled from various Federal, State, and local administrative sources – including death certificates, workers' compensation reports and claims, reports to various regulatory agencies, medical examiner reports, and police reports – as well as news and other non-governmental reports. Diverse sources are used because studies have shown that no single source captures all job-related fatalities. Source documents are matched so that each fatality is counted only once. To ensure that a fatality occurred while the decedent was at work, information is verified from two or more independent source documents or from a source document and a follow-up questionnaire. Approximately 30 data elements are collected, coded, and tabulated, including information about the worker, the fatal incident, and the machinery or equipment involved.

### Federal/State agency coverage

The Census of Fatal Occupational Injuries includes data for all fatal work injuries, whether the decedent was working in a job covered by the Occupational Safety and Health Administration (OSHA) or other Federal or State agencies or was outside the scope of regulatory coverage. Thus, any comparison between the BLS fatality census counts and those released by other agencies should take into account the different coverage requirements and definitions being used by each agency.

Several Federal and State agencies have jurisdiction over workplace safety and health. OSHA and affiliated agencies in States with approved safety programs cover the largest portion of the nation's workers. However, injuries and illnesses occurring in certain industries or activities, such as coal, metal, and nonmetal mining and highway, water, rail, and air transportation, are excluded from OSHA coverage because they are covered by other Federal agencies, such as the Mine Safety and Health Administration and various agencies within the Department of Transportation.

Fatalities occurring among several other groups of workers are generally not covered by any Federal or State agencies. These groups include self-employed and unpaid family workers, which accounted for about 18 percent of the fatalities; laborers on small farms, accounting for about 1 percent of the fatalities; and State and local government employees in States without OSHA-approved safety programs, which accounted for about 4 percent. (Approximately one-half of the States have approved OSHA safety programs, which cover State and local government employees.)

### Acknowledgments

BLS thanks the Texas Department of Insurance's Division of Workers Health and Safety for their efforts in collecting accurate, comprehensive, and useful data on fatal work injuries. BLS also appreciates the efforts of all Federal, State, local, and private sector agencies that submitted source documents used to identify fatal work injuries. Among these agencies are the Occupational Safety and Health Administration; the National Transportation Safety Board; the U.S. Coast Guard; the Mine Safety and Health Administration; the Employment Standards Administration (Federal Employees' Compensation and Longshore and Harbor Workers' divisions); the Department of Energy; State vital statistics registrars, coroners, and medical examiners; State departments of health, labor and industries, and workers' compensation agencies; State and local police departments; and State farm bureaus.

Table 1. Fatal occupational injuries by event or exposure and major private industry<sup>1</sup> sector, Texas, 2006

Event or exposure <sup>2</sup>	Total fatalities (number)	Goods producing				Service providing							
		Total goods producing	Natural resources and mining <sup>3</sup>	Construction	Manufacturing	Total service providing	Trade, transportation, & utilities	Information	Financial activities	Professional & business services	Education & health svcs	Leisure & hospitality	Other services
Total.....	486	245	68	131	46	205	121	5	13	27	7	17	15
Contact with objects and equipment.....	87	54	14	24	16	30	22	--	--	3	--	--	5
Struck by object.....	51	31	11	12	8	19	13	--	--	--	--	--	4
Struck by falling object.....	43	25	11	8	6	17	12	--	--	--	--	--	3
Struck by flying object.....	4	4	--	--	--	--	--	--	--	--	--	--	--
Caught in or compressed by equipment or objects.....	28	15	3	5	7	11	9	--	--	--	--	--	--
Caught in running equipment or machinery.....	18	12	--	4	6	6	6	--	--	--	--	--	--
Compressed or pinched by rolling, sliding, or shifting objects.....	6	--	--	--	--	3	--	--	--	--	--	--	--
Caught in or compressed by equipment or objects, n.e.c.....	4	--	--	--	--	--	--	--	--	--	--	--	--
Caught in or crushed in collapsing materials.....	8	8	--	7	--	--	--	--	--	--	--	--	--
Excavation or trenching cave-in.....	3	3	--	3	--	--	--	--	--	--	--	--	--
Caught in or crushed in collapsing structure.....	4	4	--	4	--	--	--	--	--	--	--	--	--
Falls.....	60	46	4	36	6	10	4	--	--	--	--	--	--
Fall to lower level.....	54	44	4	34	6	8	3	--	--	--	--	--	--
Fall from floor, dock, or ground level.....	4	3	--	--	--	--	--	--	--	--	--	--	--
Fall from ladder.....	13	9	--	9	--	3	--	--	--	--	--	--	--
Fall from roof.....	9	9	--	9	--	--	--	--	--	--	--	--	--
Fall from roof, unspecified.....	3	3	--	3	--	--	--	--	--	--	--	--	--
Fall from roof edge.....	3	3	--	3	--	--	--	--	--	--	--	--	--
Fall from scaffold, staging.....	6	6	--	5	--	--	--	--	--	--	--	--	--
Fall from nonmoving vehicle.....	4	4	--	--	--	--	--	--	--	--	--	--	--
Fall to lower level, n.e.c.....	15	12	4	6	--	3	--	--	--	--	--	--	--
Fall on same level.....	6	--	--	--	--	--	--	--	--	--	--	--	--
Fall to floor, walkway, or other surface.....	5	--	--	--	--	--	--	--	--	--	--	--	--
Exposure to harmful substances or environments.....	54	38	10	27	--	15	3	--	--	4	--	--	--
Contact with electric current.....	35	28	8	20	--	7	3	--	--	--	--	--	--
Contact with electric current of machine, tool, appliance, or light fixture.....	7	4	--	--	--	3	--	--	--	--	--	--	--
Contact with wiring, transformers, or other electrical components.....	13	13	--	11	--	--	--	--	--	--	--	--	--
Contact with overhead power lines.....	14	10	4	6	--	4	--	--	--	--	--	--	--
Contact with temperature extremes.....	4	3	--	3	--	--	--	--	--	--	--	--	--
Exposure to environmental heat.....	4	3	--	3	--	--	--	--	--	--	--	--	--
Exposure to caustic, noxious, or allergenic substances.....	13	7	--	4	--	6	--	--	--	--	--	--	--
Inhalation of substance.....	4	--	--	--	--	--	--	--	--	--	--	--	--
Inhalation in open or nonconfined space.....	4	--	--	--	--	--	--	--	--	--	--	--	--
Injections, stings, venomous bites.....	4	3	--	3	--	--	--	--	--	--	--	--	--
Ingestion of substance.....	5	--	--	--	--	3	--	--	--	--	--	--	--
Transportation accidents.....	200	79	30	35	14	100	67	--	3	16	4	5	3
Highway accident.....	127	40	18	13	9	72	56	--	--	8	3	--	--
Collision between vehicles, mobile equipment.....	59	18	8	5	5	34	24	--	--	3	3	--	--
Moving in same direction.....	18	5	3	--	--	9	7	--	--	--	--	--	--
Moving in opposite directions, oncoming.....	32	9	4	--	3	22	14	--	--	--	--	--	--
Moving in intersection.....	5	3	--	--	--	--	--	--	--	--	--	--	--
Vehicle struck stationary object, equipment on side of road.....	25	7	3	--	--	15	13	--	--	--	--	--	--
Noncollision accident.....	41	14	6	6	--	22	19	--	--	--	--	--	--
Jack-knifed or overturned--no collision.....	38	12	5	5	--	22	19	--	--	--	--	--	--
Nonhighway accident, except rail, air, water.....	18	12	4	5	3	6	--	--	--	--	--	4	--
Noncollision accident.....	16	12	4	5	3	4	--	--	--	--	--	--	--
Fell from and struck by vehicle, mobile equipment.....	3	3	--	--	--	--	--	--	--	--	--	--	--
Overturned.....	10	6	--	3	--	4	--	--	--	--	--	--	--
Pedestrian, nonpassenger struck by vehicle, mobile equipment.....	42	22	4	17	--	17	9	--	--	6	--	--	--
Pedestrian struck by vehicle, mobile equipment in roadway.....	14	8	--	7	--	4	--	--	--	--	--	--	--
Pedestrian struck by vehicle, mobile equipment on side of road.....	11	--	--	--	--	7	3	--	--	4	--	--	--
Pedestrian struck by vehicle, mobile equipment in parking lot or non-roadway area.....	17	11	3	7	--	6	4	--	--	--	--	--	--
Railway accident.....	3	3	3	--	--	--	--	--	--	--	--	--	--
Collision between railway vehicle and other vehicle.....	3	3	3	--	--	--	--	--	--	--	--	--	--
Water vehicle accident.....	3	--	--	--	--	--	--	--	--	--	--	--	--
Fall from ship, boat, n.e.c.....	3	--	--	--	--	--	--	--	--	--	--	--	--
Aircraft accident.....	6	--	--	--	--	--	--	--	--	--	--	--	--
Aircraft accident, n.e.c.....	3	--	--	--	--	--	--	--	--	--	--	--	--
Fires and explosions.....	23	14	8	3	3	8	3	--	--	--	--	--	3
Fire--unintended or uncontrolled.....	7	3	--	--	--	3	--	--	--	--	--	--	--
Fire in residence, building, or other structure.....	4	--	--	--	--	--	--	--	--	--	--	--	--
Explosion.....	16	11	7	--	3	5	--	--	--	--	--	--	--
Explosion of pressure vessel or piping.....	7	5	3	--	--	--	--	--	--	--	--	--	--
Explosion, n.e.c.....	9	6	4	--	--	3	--	--	--	--	--	--	--
Assaults and violent acts.....	59	13	--	5	6	41	21	--	5	--	--	8	--
Assaults and violent acts by person(s).....	45	8	--	3	5	32	18	--	4	--	--	5	--
Hitting, kicking, beating.....	3	--	--	--	--	--	--	--	--	--	--	--	--
Shooting.....	35	4	--	--	--	26	14	--	--	--	--	5	--
Stabbing.....	4	--	--	--	--	--	--	--	--	--	--	--	--
Assaults and violent acts by person(s), n.e.c.....	3	--	--	--	--	--	--	--	--	--	--	--	--
Self-inflicted injury.....	13	4	--	--	--	9	3	--	--	--	--	3	--
Suicide, attempted suicide.....	13	4	--	--	--	9	3	--	--	--	--	3	--

<sup>1</sup> Classified according to the North American Industry Classification System, 2002.<sup>2</sup> Based on the 1992 BLS Occupational Injury and Illness Classification Manual.<sup>3</sup> Includes fatalities at all establishments categorized as Mining (Sector 21) in the North American Industry Classification System, 2002, including establishments not governed by the Mine Safety and Health Administration (MSHA) rules and reporting, such as those in Oil and Gas Extraction.

NOTE: Totals for major categories may include subcategories not shown separately. Dashes indicate no data reported or data that do not meet publication criteria. n.e.c. means "not elsewhere classified." Data for 2006 are preliminary.

SOURCE: U.S. Department of Labor, Bureau of Labor Statistics, in cooperation with State and Federal agencies, Census of Fatal Occupational Injuries

Table 2. Fatal occupational injuries by worker characteristics and event or exposure, Texas, 2006

Worker characteristics	Total fatalities (number)	Event or exposure <sup>1</sup>					
		Transportation incidents <sup>2</sup>	Assaults and violent acts <sup>3</sup>	Contact with objects and equipment	Falls	Exposure to harmful sub- stances or environ- ments	Fires and explosions
Total.....	486	200	59	87	60	54	23
<b>Employee Status</b>							
Wage and Salary Workers <sup>4</sup> .....	389	171	39	76	47	38	16
Self-employed <sup>5</sup> .....	97	29	20	11	13	16	7
<b>Gender</b>							
Men.....	457	189	46	87	58	51	23
Women.....	29	11	13	--	--	3	--
<b>Age</b>							
Under 16 years.....	--	--	--	--	--	--	--
16 to 17 years.....	--	--	--	--	--	--	--
18 to 19 years.....	12	6	--	--	--	--	--
20 to 24 years.....	47	22	6	6	--	11	--
25 to 34 years.....	103	43	16	21	11	8	4
35 to 44 years.....	118	44	13	14	17	21	7
45 to 54 years.....	111	39	16	24	16	8	7
55 to 64 years.....	63	28	5	13	12	4	--
65 years and over.....	31	18	3	6	3	--	--
<b>Race or Ethnic Origin<sup>6</sup></b>							
White, non-Hispanic.....	256	117	27	37	38	25	12
Black, non-Hispanic.....	39	19	7	5	4	3	--
Hispanic or Latino.....	172	64	13	40	18	25	10
American Indian or Alaska Native.....	--	--	--	--	--	--	--
Asian.....	18	--	12	4	--	--	--
Native Hawaiian or Pacific Islander.....	--	--	--	--	--	--	--

<sup>1</sup> Based on the 1992 BLS Occupational Injury and Illness Classification Manual.

<sup>2</sup> Includes highway, nonhighway, air, water, rail fatalities, and fatalities resulting from being struck by a vehicle.

<sup>3</sup> Includes violence by persons, self-inflicted injury, and attacks by animals.

<sup>4</sup> May include volunteers and workers receiving other types of compensation.

<sup>5</sup> Includes self-employed workers, owners of unincorporated businesses and farms, paid and unpaid family workers, and may include some owners of incorporated businesses or members of partnerships.

<sup>6</sup> Persons identified as Hispanic or Latino may be of any race. The race categories shown exclude data for Hispanics and Latinos.

NOTE: Totals for major categories may include subcategories not shown separately. Dashes indicate no data reported or data that do not meet publication criteria. Data for 2006 are preliminary.

SOURCE: U.S. Department of Labor, Bureau of Labor Statistics, in cooperation with State and Federal agencies, Census of Fatal Occupational Injuries



Table 3. Fatal occupational injuries by industry and event or exposure, Texas, 2006

Industry <sup>1</sup>	NAICS code <sup>1</sup>	Total fatalities (number)	Event or exposure <sup>2</sup>					
			Transportation incidents <sup>3</sup>	Assaults and violent acts <sup>4</sup>	Contact with objects and equipment	Falls	Exposure to harmful substances or environments	Fires and explosions
<b>Total</b> .....		486	200	59	87	60	54	23
<b>Private Industry</b> .....		450	179	54	84	56	53	22
<b>Goods Producing</b> .....		245	79	13	54	46	38	14
<b>Natural Resources and Mining</b> .....		68	30	--	14	4	10	8
<b>Agriculture, Forestry, Fishing and Hunting</b> .....	11	21	10	--	6	--	3	--
Crop Production.....	111	9	6	--	--	--	--	--
Other Crop Farming.....	1119	6	4	--	--	--	--	--
Cotton Farming.....	11192	4	3	--	--	--	--	--
Animal Production.....	112	7	--	--	--	--	--	--
Cattle Ranching and Farming.....	1121	5	--	--	--	--	--	--
Beef Cattle Ranching and Farming, including Feedlots.....	11211	3	--	--	--	--	--	--
Beef Cattle Ranching and Farming.....	112111	3	--	--	--	--	--	--
Forestry and Logging.....	113	3	--	--	3	--	--	--
Logging.....	1133	3	--	--	3	--	--	--
Logging.....	11331	3	--	--	3	--	--	--
<b>Mining</b> <sup>5</sup> .....	21	47	20	--	8	3	7	8
Oil and Gas Extraction.....	211	7	3	--	--	--	--	--
Oil and Gas Extraction.....	2111	7	3	--	--	--	--	--
Oil and Gas Extraction.....	21111	7	3	--	--	--	--	--
Crude Petroleum and Natural Gas Extraction.....	211111	7	3	--	--	--	--	--
Support Activities for Mining.....	213	39	16	--	7	3	6	7
Support Activities for Mining.....	2131	39	16	--	7	3	6	7
Support Activities for Mining.....	21311	39	16	--	7	3	6	7
Drilling Oil and Gas Wells.....	213111	13	3	--	3	--	3	--
Support Activities for Oil and Gas Operations.....	213112	26	13	--	4	--	3	5
<b>Construction</b> .....		131	35	5	24	36	27	3
<b>Construction</b> .....	23	131	35	5	24	36	27	3
Construction of buildings.....	236	13	5	--	3	4	--	--
Residential Building Construction.....	2361	6	--	--	--	--	--	--
Residential Building Construction.....	23611	6	--	--	--	--	--	--
New Single-family Housing Construction (except operative builders.....	236115	5	--	--	--	--	--	--
Nonresidential Building Construction.....	2362	7	3	--	--	3	--	--
Industrial Building Construction.....	23621	5	--	--	--	--	--	--
Heavy and Civil Engineering Construction.....	237	37	18	--	8	6	--	--
Utility System Construction.....	2371	18	3	--	6	6	--	--
Water and Sewer Line and Related Structures Construction.....	23711	10	--	--	4	--	--	--
Oil and Gas Pipeline and Related Structures Construction.....	23712	6	--	--	--	--	--	--
Highway, Street, and Bridge Construction.....	2373	17	15	--	--	--	--	--
Highway, Street, and Bridge Construction.....	23731	17	15	--	--	--	--	--
Specialty Trade Contractors.....	238	81	12	3	13	26	25	--
Foundation, Structure, and Building Exterior Contractors.....	2381	29	--	--	7	13	4	--
Poured Concrete Foundation and Structure contractors.....	23811	6	--	--	--	--	3	--
Residential Poured Concrete Foundation and Structure Contractors.....	238111	3	--	--	--	--	--	--
Structural Steel and Precast Concrete Contractors.....	23812	3	--	--	--	3	--	--
Nonresidential Structural Steel and Precast Concrete Contractors.....	238122	3	--	--	--	3	--	--
Framing Contractors.....	23813	5	--	--	--	3	--	--
Residential Framing Contractors.....	238131	5	--	--	--	3	--	--
Masonry Contractors.....	23814	3	--	--	--	--	--	--
Roofing Contractors.....	23816	8	--	--	--	5	--	--
Residential Roofing Contractors.....	238161	3	--	--	--	--	--	--
Nonresidential Roofing Contractors.....	238162	5	--	--	--	3	--	--
Building Equipment Contractors.....	2382	22	--	--	--	7	12	--
Electrical Contractors.....	23821	14	--	--	--	6	6	--
Residential Electrical Contractors.....	238211	3	--	--	--	--	--	--
Nonresidential Electrical Contractors.....	238212	11	--	--	--	5	4	--
Plumbing, Heating, and Air-Conditioning Contractors.....	23822	7	--	--	--	--	6	--
Residential Plumbing, Heating, and Air-Conditioning Contractors.....	238221	4	--	--	--	--	4	--
Building Finishing Contractors.....	2383	11	--	--	--	3	5	--
Painting and Wall Covering Contractors.....	23832	4	--	--	--	--	--	--
Residential Painting and Wall Covering Contractors.....	238321	3	--	--	--	--	--	--
Finish Carpentry Contractors.....	23835	5	--	--	--	--	3	--
Nonresidential Finish Carpentry Contractors.....	238352	3	--	--	--	--	3	--
Other Specialty Trade Contractors.....	2389	17	6	--	5	3	3	--
Site Preparation Contractors.....	23891	9	5	--	3	--	--	--
Other Nonresidential Site Preparation Contractors.....	238912	9	5	--	3	--	--	--
All Other Special Trade Contractors.....	23899	8	--	--	--	3	--	--
All Other Nonresidential Special Trade Contractors.....	238992	6	--	--	--	--	--	--
<b>Manufacturing</b> .....		46	14	6	16	6	--	3
<b>Manufacturing</b> .....	31-33	46	14	6	16	6	--	3
Food Manufacturing.....	311	8	3	--	--	--	--	--
Bakeries and Tortilla Manufacturing.....	3118	3	--	--	--	--	--	--
Bread and Bakery Product Manufacturing.....	31181	3	--	--	--	--	--	--
Nonmetallic Mineral Product Manufacturing.....	327	5	3	--	--	--	--	--
Cement and Concrete Product Manufacturing.....	3273	5	3	--	--	--	--	--
Ready-Mix Concrete Manufacturing.....	32732	5	3	--	--	--	--	--
Primary Metal Manufacturing.....	331	8	--	--	4	--	--	--
Iron and Steel Mills and Ferroalloy Manufacturing.....	3311	4	--	--	3	--	--	--
Iron and Steel Mills and Ferroalloy Manufacturing.....	33111	4	--	--	3	--	--	--
Iron and Steel Mills.....	331111	4	--	--	3	--	--	--
Fabricated Metal Product Manufacturing.....	332	5	--	--	3	--	--	--
Architectural and Structural Metals Manufacturing.....	3323	3	--	--	--	--	--	--
Machinery Manufacturing.....	333	4	--	--	--	--	--	--
Transportation Equipment Manufacturing.....	336	4	--	--	--	--	--	--

See footnotes at end of table.

Table 3. Fatal occupational injuries by industry and event or exposure, Texas, 2006 - continued

Industry <sup>1</sup>	NAICS code <sup>1</sup>	Total fatalities (number)	Event or exposure <sup>2</sup>					
			Transportation incidents <sup>3</sup>	Assaults and violent acts <sup>4</sup>	Contact with objects and equipment	Falls	Exposure to harmful substances or environments	Fires and explosions
<b>Service providing.....</b>		205	100	41	30	10	15	8
<b>Trade, Transportation, and Utilities.....</b>		121	67	21	22	4	3	3
<b>Wholesale Trade.....</b>	42	20	12	--	5	--	--	--
Merchant Wholesalers, Durable Goods.....	423	7	--	--	3	--	--	--
Machinery, Equipment, and Supplies Merchant wholesalers.....	4238	3	--	--	--	--	--	--
Merchant Wholesalers, Nondurable Goods.....	424	12	9	--	--	--	--	--
Grocery and Related Product Merchant wholesalers.....	4244	5	5	--	--	--	--	--
Petroleum and Petroleum Products Merchant wholesalers.....	4247	4	3	--	--	--	--	--
Petroleum Bulk Stations and Terminals.....	42471	3	--	--	--	--	--	--
<b>Retail Trade.....</b>	44-45	34	9	19	4	--	--	--
Motor Vehicle and Parts Dealers.....	441	4	--	--	--	--	--	--
Electronics and Appliance Stores.....	443	3	--	--	--	--	--	--
Electronics and Appliance Stores.....	4431	3	--	--	--	--	--	--
Appliance, Television, and Other Electronics Stores.....	44311	3	--	--	--	--	--	--
Building Material and Garden Equipment and Supplies Dealers.....	444	3	--	--	--	--	--	--
Building Material and Supplies Dealers.....	4441	3	--	--	--	--	--	--
Food and Beverage Stores.....	445	6	--	5	--	--	--	--
Grocery Stores.....	4451	4	--	4	--	--	--	--
Convenience Stores.....	44512	4	--	4	--	--	--	--
Gasoline Stations.....	447	9	--	9	--	--	--	--
Gasoline Stations.....	4471	9	--	9	--	--	--	--
Gasoline Stations with Convenience Stores.....	44711	9	--	9	--	--	--	--
Nonstore Retailers.....	454	3	3	--	--	--	--	--
Direct Selling Establishments.....	4543	3	3	--	--	--	--	--
Other Direct Selling Establishments.....	45439	3	3	--	--	--	--	--
<b>Transportation and Warehousing.....</b>	48-49	66	46	--	13	3	--	--
Truck Transportation.....	484	43	35	--	5	--	--	--
General Freight Trucking.....	4841	30	26	--	4	--	--	--
General Freight Trucking, Local.....	48411	4	--	--	--	--	--	--
General Freight Trucking, Long-Distance.....	48412	26	24	--	--	--	--	--
General Freight Trucking, Long-Distance, Truckload.....	484121	22	20	--	--	--	--	--
General Freight Trucking, Long-Distance, Less Than Truckload.....	484122	3	3	--	--	--	--	--
Specialized Freight Trucking.....	4842	13	9	--	--	--	--	--
Specialized Freight (except Used Goods) Trucking, Local.....	48422	9	6	--	--	--	--	--
Specialized Freight (except Used Goods) Trucking, Long-Distance.....	48423	4	3	--	--	--	--	--
Support Activities for Transportation.....	488	13	7	--	5	--	--	--
Support Activities for Water Transportation.....	4883	6	--	--	4	--	--	--
Marine Cargo Handling.....	48832	5	--	--	4	--	--	--
Support Activities for Road Transportation.....	4884	3	3	--	--	--	--	--
Freight Transportation Arrangement.....	4885	3	--	--	--	--	--	--
Freight Transportation Arrangement.....	48851	3	--	--	--	--	--	--
Warehousing and Storage.....	493	5	--	--	3	--	--	--
Warehousing and Storage.....	4931	5	--	--	3	--	--	--
General Warehousing and Storage.....	49311	5	--	--	3	--	--	--
<b>Information.....</b>		5	--	--	--	--	--	--
<b>Information.....</b>	51	5	--	--	--	--	--	--
<b>Financial Activities.....</b>		13	3	5	--	--	--	--
<b>Finance and Insurance.....</b>	52	3	--	--	--	--	--	--
<b>Real Estate and Rental and Leasing.....</b>	53	10	--	--	--	--	--	--
Real Estate.....	531	6	--	--	--	--	--	--
Lessors of Real Estate.....	5311	6	--	--	--	--	--	--
Lessors of Residential Buildings and Dwellings.....	53111	5	--	--	--	--	--	--
Rental and Leasing Services.....	532	4	--	--	--	--	--	--
<b>Professional and Business Services.....</b>		27	16	--	3	--	4	--
<b>Professional, Scientific, and Technical Services.....</b>	54	3	3	--	--	--	--	--
Professional, Scientific, and Technical Services.....	541	3	3	--	--	--	--	--
Architectural, Engineering, and Related Services.....	5413	3	3	--	--	--	--	--
<b>Administrative and Support and Waste Management and Remediation Services.....</b>	56	24	13	--	3	--	4	--
Administrative and Support Services.....	561	13	7	--	--	--	--	--
Investigation and Security Services.....	5616	3	--	--	--	--	--	--
Services to Buildings and Dwellings.....	5617	10	5	--	--	--	--	--
Landscaping Services.....	56173	7	4	--	--	--	--	--
Waste Management and Remediation Services.....	562	11	6	--	--	--	--	--
Waste Collection.....	5621	8	5	--	--	--	--	--
Waste Collection.....	56211	8	5	--	--	--	--	--
Solid Waste Collection.....	562111	7	5	--	--	--	--	--
<b>Education and Health Services.....</b>		7	4	--	--	--	--	--
<b>Health Care and Social Assistance.....</b>	62	5	3	--	--	--	--	--
Ambulatory Health Care Services.....	621	3	--	--	--	--	--	--

See footnotes at end of table.

Table 3. Fatal occupational injuries by industry and event or exposure, Texas, 2006 - continued

Industry <sup>1</sup>	NAICS code <sup>1</sup>	Total fatalities (number)	Event or exposure <sup>2</sup>					
			Transportation incidents <sup>3</sup>	Assaults and violent acts <sup>4</sup>	Contact with objects and equipment	Falls	Exposure to harmful substances or environments	Fires and explosions
<b>Leisure and Hospitality</b> .....		17	5	8	--	--	--	--
<b>Arts, Entertainment, and Recreation</b> .....	71	7	4	--	--	--	--	--
Performing Arts, Spectator Sports, and Related Industries.....	711	4	3	--	--	--	--	--
Spectator Sports.....	7112	4	3	--	--	--	--	--
Spectator Sports.....	71121	4	3	--	--	--	--	--
Amusement, Gambling, and Recreation Industries.....	713	3	--	--	--	--	--	--
Other Amusement and Recreation Industries.....	7139	3	--	--	--	--	--	--
<b>Accommodation and Food Services</b> .....	72	10	--	7	--	--	--	--
Food Services and Drinking Places.....	722	10	--	7	--	--	--	--
<b>Other Services</b> .....		15	3	--	5	--	--	3
<b>Other Services, except Public Administration</b> .....	81	15	3	--	5	--	--	3
Repair and Maintenance.....	811	13	--	--	5	--	--	3
Automotive Repair and Maintenance.....	8111	9	--	--	4	--	--	--
Automotive Mechanical and Electrical Repair and Maintenance.....	81111	5	--	--	4	--	--	--
General Automotive Repair.....	811111	5	--	--	4	--	--	--
Commercial and Industrial Machinery and Equipment (except Automotive and Electronic) Repair and Maintenance.....	8113	3	--	--	--	--	--	--
Commercial and Industrial Machinery and Equipment (except Automotive and Electronic) Repair and Maintenance.....	81131	3	--	--	--	--	--	--
<b>Government<sup>5</sup></b> .....		36	21	5	3	4	--	--
<b>Federal Government</b> .....		8	6	--	--	--	--	--
<b>Service providing</b> .....		8	6	--	--	--	--	--
<b>Public Administration</b> .....		6	4	--	--	--	--	--
<b>Public Administration</b> .....	92	6	4	--	--	--	--	--
National Security and International Affairs.....	928	6	4	--	--	--	--	--
National Security and International Affairs.....	9281	6	4	--	--	--	--	--
National Security.....	92811	5	4	--	--	--	--	--
<b>State Government</b> .....		5	3	--	--	--	--	--
<b>Service providing</b> .....		4	--	--	--	--	--	--
<b>Public Administration</b> .....		3	--	--	--	--	--	--
<b>Public Administration</b> .....	92	3	--	--	--	--	--	--
<b>Local Government</b> .....		23	12	4	3	3	--	--
<b>Service providing</b> .....		21	11	4	--	3	--	--
<b>Education and Health Services</b> .....		7	4	--	--	--	--	--
<b>Educational Services</b> .....	61	6	3	--	--	--	--	--
Educational Services.....	611	6	3	--	--	--	--	--
Elementary and Secondary Schools.....	6111	5	--	--	--	--	--	--
Elementary and Secondary Schools.....	61111	5	--	--	--	--	--	--
<b>Public Administration</b> .....		12	6	4	--	--	--	--
<b>Public Administration</b> .....	92	12	6	4	--	--	--	--
Justice, Public Order, and Safety Activities.....	922	10	5	4	--	--	--	--
Justice, Public Order, and Safety Activities.....	9221	10	5	4	--	--	--	--
Police Protection.....	92212	8	4	4	--	--	--	--

<sup>1</sup> Classified according to the North American Industry Classification System, 2002.

<sup>2</sup> Based on the 1992 BLS Occupational Injury and Illness Classification Manual.

<sup>3</sup> Includes highway, nonhighway, air, water, rail fatalities, and fatalities resulting from being struck by a vehicle.

<sup>4</sup> Includes violence by persons, self-inflicted injury, and attacks by animals.

<sup>5</sup> Includes fatalities at all establishments categorized as Mining (Sector 21) in the North American Industry Classification System, 2002, including establishments not governed by the Mine Safety and Health Administration (MSHA) rules and reporting, such as those in Oil and Gas Extraction.

<sup>6</sup> Includes fatalities to workers employed by governmental organizations regardless of industry.

NOTE: Totals for major categories may include subcategories not shown separately. Dashes indicate no data reported or data that do not meet publication criteria. Data for 2006 are preliminary.

SOURCE: U.S. Department of Labor, Bureau of Labor Statistics, in cooperation with State and Federal agencies, Census of Fatal Occupational Injuries.

Table 4. Fatal occupational injuries by occupation and event or exposure, Texas, 2006

Occupation <sup>1</sup>	Total fatalities (number)	Event or exposure <sup>2</sup>					
		Transportation incidents <sup>3</sup>	Assaults and violent acts <sup>4</sup>	Contact with objects and equipment	Falls	Exposure to harmful substances or environments	Fires and explosions
Total.....	486	200	59	87	60	54	23
Management occupations.....	28	13	8	--	--	--	--
Operations specialties managers.....	3	--	--	--	--	--	--
Other management occupations.....	23	11	6	--	--	--	--
Agricultural managers.....	9	7	--	--	--	--	--
Farmers and ranchers.....	7	5	--	--	--	--	--
Construction managers.....	6	--	--	--	--	--	--
Construction managers.....	6	--	--	--	--	--	--
Miscellaneous managers.....	3	--	--	--	--	--	--
Managers, all other.....	3	--	--	--	--	--	--
Architecture and engineering occupations.....	7	6	--	--	--	--	--
Engineers.....	4	3	--	--	--	--	--
Petroleum engineers.....	3	--	--	--	--	--	--
Petroleum engineers.....	3	--	--	--	--	--	--
Community and social services occupations.....	3	--	--	--	--	--	--
Arts, design, entertainment, sports, and media occupations.....	4	--	--	--	--	--	--
Entertainers and performers, sports and related workers.....	4	--	--	--	--	--	--
Athletes, coaches, umpires, and related workers.....	4	--	--	--	--	--	--
Athletes and sports competitors.....	3	--	--	--	--	--	--
Healthcare practitioners and technical occupations.....	3	--	--	--	--	--	--
Protective service occupations.....	16	9	6	--	--	--	--
Law enforcement workers.....	9	5	4	--	--	--	--
Police officers.....	9	5	4	--	--	--	--
Police and sheriff's patrol officers.....	9	5	4	--	--	--	--
Other protective service workers.....	4	--	--	--	--	--	--
Security guards and gaming surveillance officers.....	3	--	--	--	--	--	--
Security guards.....	3	--	--	--	--	--	--
Food preparation and serving related occupations.....	6	--	4	--	--	--	--
Supervisors, food preparation and serving workers.....	4	--	4	--	--	--	--
First-line supervisors/managers, food preparation & serving workers.....	4	--	4	--	--	--	--
First-line supervisors/managers of food preparation and serving workers.....	4	--	4	--	--	--	--
Building and grounds cleaning and maintenance occupations.....	13	6	--	4	--	--	--
Building cleaning and pest control workers.....	4	--	--	--	--	--	--
Grounds maintenance workers.....	7	3	--	3	--	--	--
Grounds maintenance workers.....	7	3	--	3	--	--	--
Landscaping and groundskeeping workers.....	6	--	--	3	--	--	--
Personal care and service occupations.....	3	--	--	--	--	--	--
Other personal care and service workers.....	3	--	--	--	--	--	--
Sales and related occupations.....	36	10	22	3	--	--	--
Supervisors, sales workers.....	14	--	10	--	--	--	--
First-line supervisors/managers, sales workers.....	14	--	10	--	--	--	--
First-line supervisors/managers of retail sales workers.....	12	--	9	--	--	--	--
Retail sales workers.....	11	--	11	--	--	--	--
Cashiers.....	10	--	10	--	--	--	--
Cashiers.....	10	--	10	--	--	--	--
Sales representatives, services.....	4	3	--	--	--	--	--
Miscellaneous sales representatives, services.....	3	--	--	--	--	--	--
Sales representatives, services, all other.....	3	--	--	--	--	--	--
Sales representatives, wholesale and manufacturing.....	3	--	--	--	--	--	--
Sales representatives, wholesale and manufacturing.....	3	--	--	--	--	--	--
Other sales and related workers.....	4	4	--	--	--	--	--
Miscellaneous sales and related workers.....	4	4	--	--	--	--	--
Door-to-door sales workers, news and street vendors, and related workers.....	4	4	--	--	--	--	--
Office and administrative support occupations.....	6	5	--	--	--	--	--
Material recording, scheduling, dispatching, and distributing workers.....	4	4	--	--	--	--	--
Farming, fishing, and forestry occupations.....	8	--	--	3	--	--	--
Agricultural workers.....	4	--	--	--	--	--	--
Miscellaneous agricultural workers.....	4	--	--	--	--	--	--
Farmworkers and laborers, crop, nursery, and greenhouse.....	4	--	--	--	--	--	--
Construction and extraction occupations.....	140	40	3	27	34	29	6
Supervisors, construction and extraction workers.....	15	9	--	--	--	--	3
First-line supervisors/managers of construction trades and extraction workers.....	15	9	--	--	--	--	3
First-line supervisors/managers of construction trades and extraction workers.....	15	9	--	--	--	--	3
Construction trades workers.....	95	22	3	18	28	22	--
Boilermakers.....	4	--	--	--	--	--	--
Boilermakers.....	4	--	--	--	--	--	--
Carpenters.....	11	--	--	--	4	4	--
Carpenters.....	11	--	--	--	4	4	--
Cement masons, concrete finishers, and terrazzo workers.....	3	--	--	--	--	--	--
Cement masons and concrete finishers.....	3	--	--	--	--	--	--

See footnotes at end of table.

Table 4. Fatal occupational injuries by occupation and event or exposure, Texas, 2006 - Continued

Occupation <sup>1</sup>	Total fatalities (number)	Event or exposure <sup>2</sup>					
		Transportation incidents <sup>3</sup>	Assaults and violent acts <sup>4</sup>	Contact with objects and equipment	Falls	Exposure to harmful substances or environments	Fires and explosions
Construction laborers.....	35	11	--	11	7	5	--
Construction laborers.....	35	11	--	11	7	5	--
Construction equipment operators.....	9	8	--	--	--	--	--
Paving, surfacing, and tamping equipment operators.....	3	3	--	--	--	--	--
Operating engineers and other construction equipment operators.....	6	5	--	--	--	--	--
Electricians.....	15	--	--	--	5	7	--
Electricians.....	15	--	--	--	5	7	--
Painters and paperhangers.....	3	--	--	--	--	--	--
Painters, construction and maintenance.....	3	--	--	--	--	--	--
Pipelayers, plumbers, pipefitters, and steamfitters.....	3	--	--	--	--	--	--
Roofers.....	5	--	--	--	3	--	--
Roofers.....	5	--	--	--	3	--	--
Structural iron and steel workers.....	4	--	--	--	3	--	--
Structural iron and steel workers.....	4	--	--	--	3	--	--
Other construction and related workers.....	6	--	--	--	3	--	--
Extraction workers.....	22	7	--	6	3	4	--
Derrick, rotary drill, and service unit operators, oil, gas, and mining.....	8	--	--	3	3	--	--
Derrick operators, oil and gas.....	5	--	--	--	3	--	--
Rotary drill operators, oil and gas.....	3	--	--	--	--	--	--
Roustabouts, oil and gas.....	3	--	--	--	--	--	--
Roustabouts, oil and gas.....	3	--	--	--	--	--	--
Miscellaneous extraction workers.....	8	--	--	3	--	--	--
Extraction workers, all other.....	8	--	--	3	--	--	--
Installation, maintenance, and repair occupations.....	45	7	--	17	10	7	--
Vehicle and mobile equipment mechanics, installers, and repairers.....	17	--	--	9	--	--	--
Automotive technicians and repairers.....	5	--	--	4	--	--	--
Automotive service technicians and mechanics.....	4	--	--	3	--	--	--
Heavy vehicle & mobile equipment service technicians & mechanics.....	5	--	--	3	--	--	--
Mobile heavy equipment mechanics, except engines.....	5	--	--	3	--	--	--
Other installation, maintenance, and repair occupations.....	26	3	--	8	9	5	--
Heating, air conditioning, and refrigeration mechanics and installers.....	3	--	--	--	--	--	--
Heating, air conditioning, & refrigeration mechanics & installers.....	3	--	--	--	--	--	--
Industrial machinery installation, repair, and maintenance workers.....	16	--	--	7	4	3	--
Industrial machinery mechanics.....	9	--	--	6	--	--	--
Maintenance and repair workers, general.....	6	--	--	--	3	--	--
Line installers and repairers.....	4	--	--	--	4	--	--
Miscellaneous installation, maintenance, and repair workers.....	3	--	--	--	--	--	--
Production occupations.....	34	4	6	11	3	--	7
Metal workers and plastic workers.....	14	--	--	6	--	--	5
Welding, soldering, and brazing workers.....	9	--	--	4	--	--	3
Welders, cutters, solderers, and brazers.....	8	--	--	4	--	--	3
Miscellaneous metalworkers and plastic workers.....	3	--	--	--	--	--	--
Printing workers.....	3	--	--	--	--	--	--
Printers.....	3	--	--	--	--	--	--
Printing machine operators.....	3	--	--	--	--	--	--
Plant and system operators.....	4	--	--	--	--	--	--
Other production occupations.....	7	--	--	--	--	--	--
Inspectors, testers, sorters, samplers, and weighers.....	3	--	--	--	--	--	--
Inspectors, testers, sorters, samplers, and weighers.....	3	--	--	--	--	--	--
Transportation and material moving occupations.....	123	86	3	20	4	6	4
Motor vehicle operators.....	85	69	--	9	--	--	--
Driver/sales workers and truck drivers.....	82	67	--	9	--	--	--
Truck drivers, heavy and tractor-trailer.....	73	59	--	9	--	--	--
Truck drivers, light or delivery services.....	8	8	--	--	--	--	--
Material moving workers.....	33	13	--	11	--	4	--
Hoist and winch operators.....	3	--	--	--	--	--	--
Hoist and winch operators.....	3	--	--	--	--	--	--
Industrial truck and tractor operators.....	5	3	--	--	--	--	--
Industrial truck and tractor operators.....	5	3	--	--	--	--	--
Laborers and material movers, hand.....	16	5	--	7	--	--	--
Laborers and freight, stock, and material movers, hand.....	14	3	--	7	--	--	--
Refuse and recyclable material collectors.....	6	5	--	--	--	--	--
Refuse and recyclable material collectors.....	6	5	--	--	--	--	--
Military specific occupations.....	6	4	--	--	--	--	--

<sup>1</sup> Based on the 2000 Standard Occupational Classification System.

<sup>2</sup> Based on the 1992 BLS Occupational Injury and Illness Classification Manual.

<sup>3</sup> Includes highway, nonhighway, air, water, rail fatalities, and fatalities resulting from being struck by a vehicle.

<sup>4</sup> Includes violence by persons, self-inflicted injury, and attacks by animals.

NOTE: Totals for major categories may include subcategories not shown separately.

Dashes indicate no data reported or data that do not meet publication criteria. Data for 2006 are preliminary.

SOURCE: U.S. Department of Labor, Bureau of Labor Statistics, in cooperation with State and Federal agencies, Census of Fatal Occupational Injuries