

William R. Wiley

EMSL In Brief

Environmental Molecular Sciences Laboratory

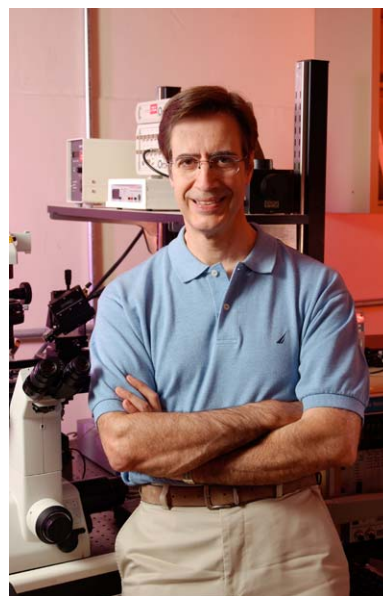
Steven Wiley Pens Monthly Column for *The Scientist*

Environmental Molecular Sciences Laboratory's Steven Wiley, Lead Scientist for Biology, has accepted an invitation from *The Scientist* to write a monthly column on his thoughts and opinions about life sciences. His first column, which appeared in the January 2008 issue, provides a perceptive discussion of the oral traditions in life sciences and provides insights into the growing challenges scientists face in gathering and disseminating information. The article can be accessed at <http://www.the-scientist.com/article/display/54043/>.

Wiley was asked to write the column because of the fresh perspectives he brings as well as his scientific credibility. In particular, the journal's editorial board was impressed with his collaborative research into large-scale protein-protein interactions and cell signaling networks at EMSL as well as his work as the Director of Pacific Northwest National Laboratory's Biomolecular Systems Initiative.

While his credentials helped make him a logical choice for this task, it was his lively writing style that had the journal's editors repeatedly ask him to take over the column. "They thought I was entertaining," he noted.

For more information, contact Mary Ann Showalter (509-371-6017).

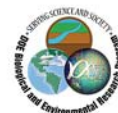


P.O. Box 999 Richland, WA 99352 • <http://www.emsl.pnl.gov> • 509-376-2553

**Pacific Northwest
National Laboratory**
Operated by Battelle for the
U.S. Department of Energy



**Office of
Science**
U.S. DEPARTMENT OF ENERGY



February 1, 2008