

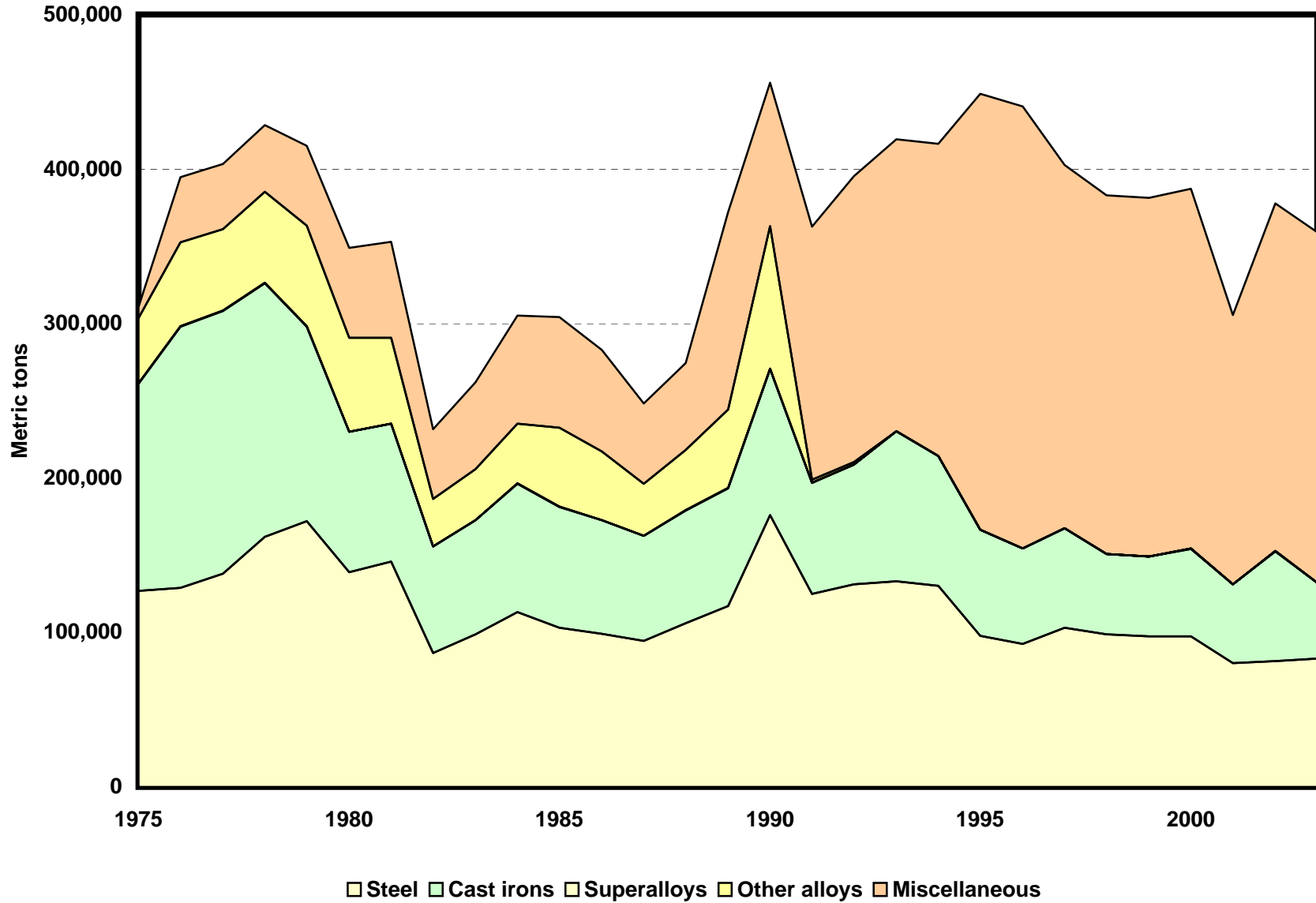
SILICON END-USE STATISTICS¹
U.S. GEOLOGICAL SURVEY
 [Metric tons]

Last modification: September 1, 2005

Year	Steel	Cast irons	Superalloys	Other alloys	Miscellaneous	Undistributed	Apparent consumption
1975	127,000	134,000	239	42,200	7,230	147,000	458,000
1976	129,000	169,000	251	54,200	42,400	153,000	548,000
1977	138,000	170,000	218	52,800	42,200	176,000	579,000
1978	162,000	164,000	289	58,900	43,300	168,000	596,000
1979	172,000	126,000	247	65,100	51,600	232,000	647,000
1980	139,000	90,800	231	60,800	58,000	126,000	475,000
1981	146,000	89,000	145	55,600	62,000	170,000	522,000
1982	86,700	68,900	105	30,700	45,000	97,500	329,000
1983	98,700	73,900	162	32,800	56,300	173,000	435,000
1984	113,000	83,300	165	38,600	70,100	195,000	500,000
1985	103,000	78,200	306	51,000	71,600	180,000	484,000
1986	99,000	73,500	134	44,500	65,800	195,000	478,000
1987	94,400	68,100	127	33,700	52,000	259,000	507,000
1988	106,000	73,000	170	38,800	56,400	320,000	595,000
1989	117,000	76,300	283	50,700	128,000	176,000	548,000
1990	176,000	94,400	299	92,300	92,700	133,000	588,000
1991	125,000	71,800	90	1,920	164,000	136,000	500,000
1992	131,000	77,500	68	1,680	185,000	136,000	532,000
1993	133,000	97,200	68		189,000	138,000	557,000
1994	130,000	84,300	14		202,000	200,000	616,000
1995	97,700	68,800	25		282,000	160,000	609,000
1996	92,700	61,700	25		286,000	154,000	594,000
1997	103,000	64,400	132		235,000	226,000	628,000
1998	98,700	52,000	168		232,000	233,000	616,000
1999	97,400	51,700	173		232,000	261,000	643,000
2000	97,300	56,800	116		233,000	302,000	689,000
2001	80,200	51,000	93		174,000	197,000	502,000
2002	81,500	71,000	108		225,000	163,000	541,000
2003	82,900	49,100	80		227,000	184,000	543,000

¹Compiled by G.R. Matos and L.A. Corathers.

End Uses of Silicon



Silicon End-Use Worksheet Notes

Data Source

The source of data for the silicon end-use worksheet is the Mineral Yearbook, an annual collection, compilation, and analysis of mineral industry data, published by the U.S. Bureau of Mines and the U.S. Geological Survey.

End Use

End use is defined as the use of the mineral commodity in a particular industrial sector or product. For silicon, end-use categories are steel, cast irons, superalloys, other alloys, and miscellaneous uses. The undistributed category equals the difference between apparent consumption and reported end uses by the industry.

The miscellaneous category includes silicones, silanes, fumed silica, and other chemicals, plus aluminum alloys. Since 1991, aluminum alloys have been included in this category; prior to 1991, aluminum alloys were included in the "other alloys" category.

End-use data for the years 1987 and 1988 were estimated based on a linear trend, using the trend function of Microsoft Excel.

Blank cells in the spreadsheet indicate that data were not available. Data are rounded to no more than three significant digits; data may not add to totals shown.

References

U.S. Bureau of Mines, 1977–96, Minerals Yearbook, v. I, 1975–94.

U.S. Geological Survey, 1997–2005, Minerals Yearbook, v. I, 1995–2003.

Recommended Citation Format:

(1) If taken from CD version:

U.S. Geological Survey, [year of last update, e.g., 2005], [Mineral commodity, e.g., Gold] statistics, *in* Kelly, T.D., and Matos, G.R., comps., Historical statistics for mineral and material commodities in the United States: U.S. Geological Survey Data Series 140, one CD-ROM. (Also available online at <http://pubs.usgs.gov/ds/2005/140/>.)

(2) If taken from online version:

U.S. Geological Survey, [year of last update, e.g., 2005], [Mineral commodity, e.g., Gold] statistics, *in* Kelly, T.D., and Matos, G.R., comps., Historical statistics for mineral and material commodities in the United States: U.S. Geological Survey Data Series 140, available online at <http://pubs.usgs.gov/ds/2005/140/>. (Accessed [date].)

For more information, please contact:

[USGS Silicon Commodity Specialist](#)