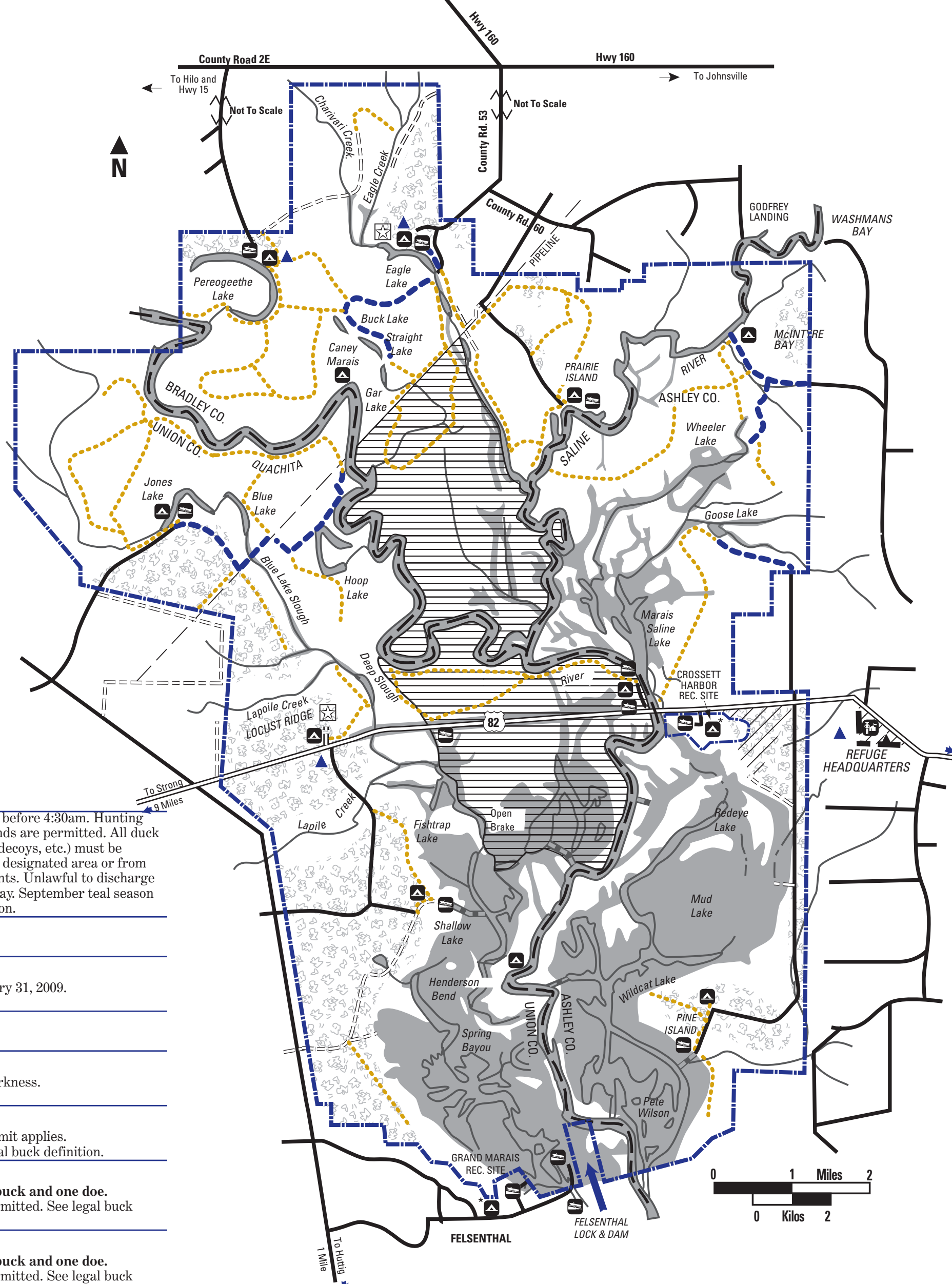


For all deer and turkey harvested on the refuge, the hunter will immediately (prior to moving the animal) complete the hunting license kill information using 220 as zone of kill and use the same number at official state check station as zone of kill.

# 2008-2009 Hunting Season

Type	Season Dates	Specific Regulations
Duck, Goose and Coot	state duck and teal season geese and coots can be taken during state duck season when state seasons for these species are open	Hunters may not enter the hunting area before 4:30am. Hunting ends at noon each day. Only portable blinds are permitted. All duck hunting equipment (blinds, boats, guns, decoys, etc.) must be removed by 1:30pm, each day either to a designated area or from the refuge. Closed during quota deer hunts. Unlawful to discharge or possess more than 25 shotshells per day. September teal season shooting hours are from sunrise until noon.
Woodcock	state season	Closed during quota deer hunts.
Squirrel and Rabbit	9/6/2008 - 1/31/2009	Dogs allowed December 1, 2008 - January 31, 2009. Closed during quota deer hunts.
Quail	11/1/2008 - 1/31/2009	Closed during quota deer hunts.
Raccoon and Opossum	sunrise 11/15/2008 - 1/31/2009	Use of dogs required during hours of darkness. Closed during quota deer hunt.
Deer Archery/Crossbow (Zone 220)	10/1/2008 - 1/31/2009	Either sex for entire season, state bag limit applies. Closed during quota deer hunts. See legal buck definition.
Deer (Muzzleloader) (Zone 220)	10/18-19/2008	Quota permit required. <b>Bag limit: one buck and one doe.</b> Archery, crossbow and muzzleloader permitted. See legal buck definition.
Deer (Gun) (Zone 220)	11/8-9 and 13-14/2008	Quota permit required. <b>Bag limit: one buck and one doe.</b> Archery, crossbow and muzzleloader permitted. See legal buck definition.
Turkey (Spring) (Archery/Crossbow) (Zone 220)	spring state season for turkey management Zone 9	Closed during quota gun turkey hunts. Two bearded turkey. Fall archery season closed.
Turkey (Spring) (Gun) (Zone 220)	same as state /2009 (youth hunt) 4/11-13 and 4/18-20/2009	Quota permit required. Bag limit one bearded turkey. Youth hunt restricted to youths, under 16 years of age (age at opening of state-wide Turkey season 2009) accompanied by one adult. For the other quota turkey hunts, no one may accompany permit holder while hunting. <b>Turkeys must be checked at designated stations listed in state turkey hunt regulations.</b>
Trapping	sunrise 11/15/2008 - 1/31/2009	Special refuge permit required and available at refuge office. Closed during quota deer hunts.
Beaver, Nutria, Feral Hogs, Coyote	any refuge hunt	May be taken during any daytime refuge hunt with weapons legal for that hunt. No bag limit. Live hogs may not be transported.

**Legal Buck Limit and Definition:** The total number of bucks that a hunter may harvest through a combination of all deer hunts on Felsenthal NWR (Zone 220) is two (these are not bonus deer). Legal buck is any male deer.



	Refuge Boundary		Upland Area (primarily pine timber/open fields)
	Improved Road		Boat Access Canal
	Unimproved Road		Area Closed (in square)
	Blue ATV Trails		Camping Area (primitive camping only)
	Yellow ATV Trails		Improved Boat Ramp
	Waterfowl Sanctuary (closed during regular duck hunting season) Open to authorized users during Sept. teal season		Crossett Harbor Rec. Site and Grand Marais Rec. Site equipped with full amenities
	No Hunting Zone		Not to Scale
	Permanent Pool (65 ft. contour)		Deer Check Station