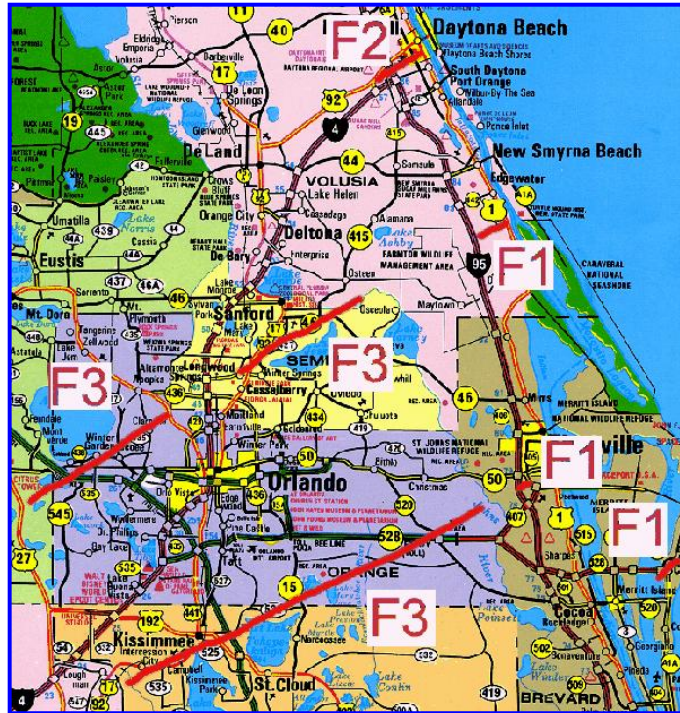


# The Central Florida Tornado Outbreak of 22-23 February, 1998

## 1997-1998 Southern Region Service Enhancement Project GOLD MEDAL WINNER



Submitted August 1998

National Weather Service Forecast Office  
Melbourne, Florida

### Event Synopsis

During the late night and early morning hours of 22-23 February 1998 (Sunday - Monday), the most devastating tornado outbreak ever to occur in the state of Florida, in terms of both loss of life and property damage, occurred within the county warning area of the Melbourne (MLB) National Weather Service Office (NWSO). Forty-two people died as a result of the tornadoes and more than 260 others were injured. Over 3,000 structures were damaged, and more than 700 were completely destroyed. A total of seven confirmed tornadoes occurred that night. Four of the tornadoes were unusually long-lived and produced damage tracks of between 8 and 38 miles, resulting in the majority of damage and all fatalities. Uncommon among Florida tornadoes, the estimated wind speed for three of these twisters reached 200 mph which is on the high end of F3 intensity on the Fujita scale. Although this event was of historical proportion the number of fatalities could have been significantly higher if these killer tornadoes were not accurately forecast, detected, and then warned for in a timely and professional manner.

Local applied research conducted by MLB earlier in the year indicated the likelihood of an active severe weather season across central Florida during the winter and spring of 1997-98. This was a direct result of the southward relocation of the upper jet stream across the Gulf of Mexico and Florida peninsula due to large scale effects from El Nino. From the research a conceptual model was created depicting the idealized synoptic setting for peninsular Florida tornado outbreaks during strong El Nino years. Based on these expectations, MLB alerted its citizens as early as October regarding the chances for a greater number of severe weather episodes with stronger than normal tornadoes. This information was featured

on MLB's Internet home page and was also presented to the division of Florida Emergency Managers (EMs) at the state-sponsored "Florida El Nino Summit" in mid-December of 1997. In preparation, specific forecaster training was conducted at MLB concentrating on the anticipation and detection of strong & violent tornadoes.

The increasing likelihood for tornadoes on 22-23 February was apparent to MLB forecasters as early as 20 February (Friday afternoon). [Atmospheric conditions](#) were coming together to approximate the conceptual model. Prior to the event, the suite of products issued by MLB, including two coordinated statewide statements issued by NWSO Miami ([1](#) and [2](#)) alerted local media, emergency management, rescue & law enforcement, and the public of east central Florida to the threat of significant severe weather more than 48 hours in advance. Hazardous Weather Outlooks (HWO), designed to assist civil support agencies for emergency preparedness and planning, were issued twice daily beginning Saturday afternoon which refined the timing, specifics, and seriousness of the impending severe weather threat. In the HWO issued [525 AM Sunday](#), the continuing threat for tornadoes was restated. It was also mentioned that the storm movement would be rapidly east-northeast at 40 to 50 MPH and people should "seek shelter well in advance of approaching storms". Later, an updated HWO ([1155 AM](#)) highlighted areas in proximity of a line from Tampa Bay to Cape Canaveral as the region most prone to severe weather. After coordination with MLB, the Storm Prediction Center issued a tornado watch for much of the peninsula from 9 PM through 3 AM (Monday) due to developing strong convection over the extreme eastern Gulf of Mexico. With a growing squall line of thunderstorms heading toward central Florida, the operations team was now fully postured for severe weather, shifting the emphasis to the issuance of timely and accurate "short-fuse" weather products.

As the event began to unfold, a Short Term Forecast (NOW) was issued at [909 PM](#) headlining the initial "Threat for severe storms increasing for Lake and Volusia Counties". The [939 PM NOW](#) stated that tornadoes were possible over northwestern Lake County between 950 PM and 1010 PM, and that residents should be prepared for imminent warnings. These detailed forecasts preceded the first Tornado Warning (TOR) for Lake County which was issued at [945 PM](#) based on Doppler radar signatures. A telephone coordination call was placed to the Lake County EM to inform them of the warning and to list various towns in the path of the storm. Personally informing the each county would become a critical standard procedure for all subsequent warnings throughout the outbreak.

A Severe Weather Statement (SVS) was then issued at [1010 PM](#) to update information concerning the Lake County warning and also recommended that residents of Volusia County prepare for the possibility of tornadoes. It was decided that SVS products would be tone-alerted on the NOAA Weather Radio in the same way that actual warnings (TORs) are tone-alerted. This is not routine practice but since the storms were moving so rapidly vital information contained within the warnings required frequent updating. Several phone calls were made to the Volusia County Sheriff dispatcher between 1030 and 11 PM to update the location of the tornadic storm and the communities in it's path. The first tornado of the evening touched down at 1055 PM and produced damage until reaching the coast at 1105 PM. Real-time storm spotter observations of a lowering funnel cloud were called into MLB from ham radio operators. Soon after, reports from the Sheriff's office indicated four tractor-trailers had been rolled over on Interstate 4, just west of Daytona Beach. The official storm survey would later show extensive destruction, including one fatality which occurred when a mobile home was destroyed. Concerned that a major outbreak of multiple tornadoes would occur late into the night, a special-edition HWO was issued at [1040 PM](#). The main intent was to signal local television newscasters before the evening (11 PM) news so that as many people as possible would be informed before going to sleep for the night. Other significant text included the declaration "...this is a dangerous situation!".

At [1127 PM](#), a second TOR was issued for Lake County as suspicious circular rotation was detected

by DOPPLER radar within two separate thunderstorms over the county. This warning was quickly followed by a TOR for adjacent western Orange County at [1137 PM](#) as the southern storm intensified and was approaching the county line near the city of Winter Garden. A supporting SVS ([1146 PM](#)) listed the cities in immediate path of the approaching tornadic storm, and also alerted residents in the next county downstream (Seminole) of the imminent TOR for their county. At 1150 PM, an amateur radio operator reported a "[tornado on the ground](#)" in Winter Garden. This information was disseminated immediately in a concise [SVS](#) which notified Ocoee and Apopka residents to take cover at once. A TOR was issued for Seminole County at [1156 PM](#), which included the report from Winter Garden in order to invoke swift public reaction. Once again, several calls were made to Seminole County to inform EM personnel of the danger. A NOW at [1205 AM](#) updated the east central Florida short term weather picture, followed by an SVS at [1211 AM](#) which summarized the coincident warnings in effect while urging Lake Mary and Sanford residents to "...act now to protect their lives!". Soon after, numerous reports of significant damage from Orange and Seminole counties were relayed to MLB via amateur radio and Skywarn spotters, television news, and county EM's. By morning it would be concluded that three people would die from the Winter Garden tornado and another thirteen would be killed from the Sanford tornado.

Even with several warnings in effect, more warnings were quick to follow: a third TOR ([1214 AM](#)) for Volusia county was followed by a TOR for Osceola County at [1222 AM](#). The most devastating killer tornado of the event touched down in Osceola County at 1240 AM just southwest of Kissimmee. This area is known to have a high population of tourists as well as numerous RV parks. The Kissimmee tornado was preceded by the 1222 AM TOR and the [1237 AM SVS](#) both placing the town directly in the tornado's path. The Doppler radar depiction of the tornadic thunderstorm is seen [here](#). More people were killed from this single tornado (25) than were killed in any previous Florida outbreak. Many were killed in the [Ponderosa RV Park](#).

Continuing throughout the remainder of the morning, numerous reports of damage and casualties from tornado touchdowns were called into the NWS office from each impacted county. The information was placed in subsequent TORs which were issued for Orange ([1240 AM](#), [119 AM](#)), Osceola ([119 AM](#), [304 AM](#)) and Brevard Counties ([123 AM](#), [227 AM](#), and [316 AM](#)) for other tornadic storms which went on to produce considerable damage in unpopulated rural areas. However, notable structural damage was reported southwest of Edgewater, near Titusville, and at Port Canaveral.

Throughout the event, the operations team issued accurate, timely short-fuse weather products in a rapidly evolving situation, with tornadic storms moving as fast as 50 to 60 MPH at times. All seven tornadoes were preceded by Tornado Warnings (TOR) with [positive lead times](#). Statistically, [the official assessment team found MLB's performance to be "excellent"](#) (pdf version). The Probability of Detection (POD) was found to be an impressive 100 percent while the False Alarm Ratio (FAR) was only 31 percent. Lead times before fatalities in each of the four counties which experienced killer tornadoes was 23 minutes while the average lead time for all tornadoes in all counties was 15 minutes. Both of these statistics are well-above the national average. Between 830 PM Sunday evening and 420 AM Monday morning, a total of [52](#) event-related short-fuse weather products were issued, an average of about one product every nine minutes over an eight hour period, including TORs, [FFWs](#), SVSs, NOWs, Special Marine Warnings ([SMW](#)) Flood Statements ([FFS](#)), Local Airport Advisories ([LAA](#)) and Local Storm Reports (LSR). Of unique interest was the [1045 PM](#) Local Airport Advisory for the Daytona Beach International Airport (DAB) which stressed that a severe storm with a possible tornado would pass very near the airport facility.

A final commentary worthy of documentation was that during the event MLB was engaged in a

selective testing of an experimental workstation called the Warning Decision Support System (WDSS). This system was developed by the National Severe Storms Laboratory (NSSL) and was running the latest severe storm detection algorithms to include a new [Tornado Detection Algorithm \(TDA\)](#). While using experimental output during actual situations can cloud a forecaster's warning decision process, the WDSS performed remarkably well and added value to warning operations. In part, experiences from this event have increased confidence in the TDA's performance which will soon be ported over to the operational system in late 1998.

ZCZC MIAPNSMLB  
TTAA00 KMLB 231105

PUBLIC INFORMATION STATEMENT  
NATIONAL WEATHER SERVICE MELBOURNE FL  
600 AM EST MON FEB 23 1998

...EAST CENTRAL FLORIDA TORNADO OUTBREAK POSSIBLY THE MOST DEVASTATING IN THE HISTORY OF FLORIDA...

PRELIMINARY REPORTS OF OVER 20 FATALITIES OBTAINED FROM NEWS REPORTS IN THE AFTERMATH OF THE TORNADO OUTBREAK THAT STRUCK EAST CENTRAL FLORIDA LATE SUNDAY NIGHT AND EARLY THIS MORNING INDICATE IT MAY BE THE DEADLIEST IN FLORIDA HISTORY. THE ONLY COMPARABLE OUTBREAKS ARE THE TORNADO OUTBREAK OF MARCH 31ST 1962 THAT KILLED 17 PEOPLE IN SANTA ROSA COUNTY AND THE TORNADO OUTBREAK OF APRIL 4TH 1966 THAT KILLED 11 PEOPLE IN HILLSBOROUGH AND POLK COUNTIES.

HAGEMEYER





## The 22-23 February 1998 East-Central Florida Tornado Outbreak Chronology of Events

(Note: For brevity, only events relating to the tornadic episode are listed; [see table at the bottom of the chronology for a list of the tornadoes.](#))

### Sunday, February 22, 1998

**200-230 AM** - Forecast coordination calls were made to NWSO Tampa Bay and NWSFO Miami regarding the timing/possibility of severe weather.

**525 AM** - A HWO was issued which continued to mention the threats for damaging wind gusts over 55 mph, large hail and tornadoes. The HWO also mentioned that storms would be moving at up to 50 mph and that people would need to "SEEK SHELTER WELL IN ADVANCE OF APPROACHING STORMS".

**Morning** - The day shift forecaster coordinated with the MIC as well as evening shift personnel concerning the need for additional staffing for the afternoon/evening hours. He also contacted all SKYWARN net coordinators across the northern half of CWA regarding potential activation.

**1155 AM** - A HWO was issued which headlined "SIGNIFICANT THREAT OF DAMAGING WINDS...HAIL... AND TORNADOES THIS AFTERNOON AND EVENING".

**1230 PM** - MIC arrived on station to work a less significant afternoon severe weather event.

**200 PM** - The evening shift forecaster arrived early to work afternoon severe weather event. Amateur radio operator arrived on station to work both afternoon/evening events.

**Mid to Late Afternoon** - The Science and Operations Office (SOO) stopped into the office on three separate occasions to check on the status of personnel/operations. Other actions taken by the staff during this time period were related to the afternoon severe weather event.

**610 PM** - The evening shift forecaster phoned the Storm Prediction Center (SPC) to emphasize the need to extend the tornado watch into early Monday morning.

**813 PM** - The Tornado Watch was re-issued by SPC for central Florida until 300 AM Monday.

**908 PM** - The Brevard county EM director telephoned and was briefed by the Severe Weather Coordinator (SWC) regarding the potential for severe weather the remainder of the night.

**909 PM** - A Short Term Forecast (NOW) headlined "THREAT FOR STRONG STORMS INCREASING FOR LAKE AND VOLUSIA COUNTIES", and also mentioned conditions were favorable for tornadoes to develop.

**935 PM** - The MLB radar operator phoned NWS Jacksonville regarding possible tornadic cells moving into their county warning area (CWA).

**939 PM** - A NOW was issued for Lake County which headlined the threat for "ISOLATED TORNADOES INCREASING" and alerted residents to prepare for a possible warning.

**941 PM** - The SWC briefed the Skywarn coordinator in Lady Lake that a tornado was possible in that area beginning between 955 and 1000 PM.

**945 PM** - A Tornado Warning (TOR) was issued for Lake County. Lake Griffin, Lady Lake and Emerald were listed as being in the path of the possible tornado.

**958 PM** - A Severe Weather Statement (SVS) was issued for Lake County mentioning possible tornado touchdowns from west of Leesburg to Fruitland Park, Lady Lake, and Lake Griffin.

**1000 PM** - Lake County SKYWARN reported dime-sized hail to the amateur radio operator at NWS Melbourne.

**1010 PM** - A SVS was issued for Lake and Volusia Counties. Altoona...Paisley and Astor Park are listed in the path of the possible tornado. The SVS mentions the hail report from Altoona. Residents of Volusia County were advised to prepare for a Tornado Warning.

**1011 PM** - NWS Jacksonville advise the Melbourne radar operator that their radar indicated a tornadic vortex signature (TVS) approaching Altoona.

**1016 PM** - The SWC briefed Lake County SKYWARN about a possible tornado near Altoona, moving towards Pittman and Astor Park.

**1022 PM** - A TOR was issued for Volusia County, mentioning that the storm with a possible tornado will move into Volusia County near Pierson and Barberville.

**1028 PM** - A NOW was issued, mentioning severe thunderstorms with possible tornadoes from Leesburg to Daytona Beach, with more tornadic storms possible as far south as Sanford and Orlando. Residents of Seminole and Orange Counties were urged to "TAKE QUICK ACTION WHEN WARNINGS ARE ISSUED".

**1033-1040 PM** - The SWC called the Volusia County Sheriff's dispatcher to continuously update the location of a possible tornado. These updates were relayed immediately to deputies on patrol in the area.

**1040 PM** - Prior to the local late night news, a special HWO was issued to alert the general public, the central Florida EM offices, and the Orlando TV network affiliates to the continuing tornadic threat. It emphatically stated: "ANOTHER ROUND OF SEVERE WEATHER IS EXPECTED!", and urged local law enforcement and EM personnel to coordinate with the NWS in Melbourne.

**1041 PM** - A SVS was issued for Lake and Volusia Counties, mentioning potential for tornado touchdowns from DeLeon Springs to Glenwood, and along U.S. 17, U.S. 92, and State Road 11. Tornadic storms were forecast to reach the coast between 11:00 and 11:15 PM.

**1045 PM** - A Local Airport Advisory (LAA) was issued for Daytona Beach International Airport (DAB) for wind gusts above 35 knots, excessive lightning and hail at least 1/2 inch in diameter. Airport operations was alerted by phone of the possibility of a tornadic storm passing very close to the airfield.

**1049 PM** - A Special Marine Warning (SMW) was issued for intracoastal/nearshore Atlantic waters between Flagler Beach and Mosquito Lagoon for tornadic storms moving offshore.

**1053 PM** - Volusia County SKYWARN reported high winds blew trees down, and forced cars off the road on U. S. 17 north of Deland at 1045 PM.

**1055 PM** - A delayed report of a funnel cloud near Eustis in Lake County at 1010 PM was received from WESH-TV.

**1057 PM** - The SWC briefed the Volusia County Sheriff's office concerning the strong tornadic signature approaching Holly Hill and Ormond Beach.

**1059** - A SVS was issued for Lake and Volusia Counties, mentioning a possible tornado moving towards Daytona Beach, Holly Hill and Ormond Beach. The earlier wind damage report was also mentioned.

**1105 PM** - A Ham radio operator reported strong winds in South Daytona area - estimated 50 MPH.

**1107 PM** - A Ham radio operator 2 miles north of Port Orange reported a funnel cloud sighting.

**1108 PM** - Daytona Beach Police Department reported a tornado touchdown with injuries in the south part of Daytona Beach around 1105 PM.

**1108 PM** - A SVS was immediately issued relaying the tornado touchdown report, and alerting residents on the barrier islands to the east to: "TAKE SHELTER NOW!!! A TORNADO TOUCHDOWN MAY BE IMMINENT!!!"

**1110 PM** - Volusia County SKYWARN reported that 4 tractor-trailers were rolled over by tornadic winds at the I-95/I-4 interchange. Also, many homes and apartments in the Holly Hill/ South Daytona area had suffered damage. One serious injury was also reported.

**1120 PM** - The TOR for Volusia County was extended due to the line of severe and potentially tornadic storms still extending from near Daytona Beach to DeLand.

**1127 PM** - A TOR was issued for Lake County due to possible tornadoes indicated by radar near Leesburg and southwest of Clermont.

**1130 PM** - A delayed report came in from the Daytona Beach Airport Air Traffic Control Tower (ATCT) of a wind gust of 77 MPH.

**1137 PM** - A TOR was issued for western Orange County for a possible tornado near Clermont in Lake County moving toward Winter Garden, Lake Apopka and Ocoee.

**1146 PM** - A SVS issued for Volusia/Lake/Orange/Seminole/Osceola Counties mentioned possible tornadoes approaching DeLand, Winter Garden, Ocoee and Apopka. Residents of Seminole County were told to prepare for a warning as a tornadic storm was eventually headed for Altamonte Springs and Longwood.

**1148 PM** - A Local Storm Report (LSR) was sent out, listing the severe weather and tornado damage reports gathered from Volusia County.

**1150 PM** - An amateur radio operator in Seminole County reported a tornado on the ground in Winter Garden, moving toward Apopka.

**1151 PM** - A SVS issued for Orange County headlined: "TORNADO ON THE GROUND IN WINTER GARDEN".

**1155 PM** - A ham radio operator relayed a report from the Ocoee Police of a funnel cloud sighting over Ocoee.

**1156 PM** - A TOR was issued for Seminole County for a tornadic storm near Apopka, expected to be near Altamonte Springs, Longwood and Lake Mary. The storm was mentioned as having produced a tornado in Winter Garden.

**1156 PM** - The SWC called Seminole County EM to brief them about the possible tornado approaching the Altamonte Springs/Longwood area.

## **Monday, February 23, 1998**

**Midnight** - The SWC called the Volusia County Sheriff to alert him of the potential for a tornado touchdown in the area from Osteen to Edgewater.

**1202 AM** - A Ham radio operator reported that the Circle-K in Winter Garden was hit by a tornado, and that there were injuries.

**1205 AM** - The SWC briefed Seminole EM about a possible tornado headed for Lake Mary and Sanford/Midway.

**1205 AM** - A NOW outlined the area from Kissimmee and Orlando north to Leesburg and Sanford and east to Daytona Beach and Flagler Beach as being prone to tornado touchdowns.

**1211 AM** - A SVS was issued for Volusia/Lake/Orange/Seminole/Osceola Counties, and listed Lake Mary and Sanford as being the path of a tornado. The tornadic damage reports from Orange County were mentioned.

**1214 AM** - Another TOR for Volusia County outlined the area from Deltona to Osteen and Lake Ashby for potential tornado touchdowns.

**1215 AM** - A Ham radio operator in Lake Mary (Seminole County) reported strong winds and small hail at the intersection of I-4 and Lake Mary Boulevard.

**1217 AM** - The SWC briefed Osceola County EM about the potential for tornadoes near the Kissimmee attractions area.

**1222 AM** - The SWC briefed Volusia County EM concerning possible tornado touchdowns from Osteen to Edgewater.

**1222 AM** - A TOR was issued for Osceola County, which listed Intercession City and Kissimmee as being in the path of a possible tornado. Residents in southwest Orange County were advised to prepare for an extension of the tornado warning as it this tornado was forecast to move into their area.

**1229 AM** - A LAA was issued for Orlando International and Executive Airports (MCO/ORL), since the tornadic Kissimmee storm was headed towards the airfield.

**1235 AM** - A SKYWARN spotter in Kissimmee sighted a possible funnel cloud to the southwest of his location.

**1237 AM** - A SVS issued for Volusia/Lake/Seminole/Orange/Osceola Counties mentioning tornadoes were indicated by radar near Osteen, Ocoee, Maitland and Kissimmee. The SVS also mentioned that the Orange County TOR would be extended.

**1238 AM** - A Ham radio operator reported sighting a funnel cloud over U.S. 17/92 in Campbell City.

**1240 AM** - The TOR was extended for Orange County due to Kissimmee tornado moving towards the MCO Airport.

**1249 AM** - A Ham radio operator relayed a report of a tornado touching down in Kissimmee with one home having its roof removed.

**1249 AM** - SKYWARN spotter (see 1235 AM) estimated winds of 70 MPH at his location.

**1250 AM** - Orange County EM reported multiple tornado touchdowns around Winter Garden.

**1250 AM** - A SKYWARN spotter on Boggy Creek Road in northeast Kissimmee reported seeing a funnel cloud illuminated by continuous lightning.

**1253 AM** - A SVS for Volusia/Lake/Seminole/Orange/Osceola/Brevard Counties highlighted tornadoes near Edgewater, Sanford, Kissimmee and Orlando. It also mentioned possible tornadoes farther east into Brevard County near Titusville through 3 AM.

**1257 AM** - Seminole County EM reported numerous tornado touchdowns in Longwood, Sanford, Winter Springs and Geneva.

**105 AM** - The first news reports of a fatality are received from Volusia County as a man was killed when his mobile home was destroyed.

**105 AM** - A delayed report of hail of unknown size was received from a SKYWARN spotter (see 1235, 1249 AM).

**106 AM** - A Ham radio operator reported a funnel cloud west of Orlando over the Beeline Expressway.



**108 AM** - A SVS was issued for Volusia/Seminole/Orange/Osceola/Brevard Counties for tornadoes indicated by radar east of Orlando, and near Edgewater, Lake Harney, Lake Toho. The SVS also highlighted significant damage in Seminole County, and alerted Brevard County residents that a warning would likely be issued soon.

**110 AM** - The SWC briefed the SPC lead forecaster on the damage/injuries confirmed thus far.

**117 AM** - A NOW was issued to emphasize the tornadic threat area shifting southeast towards Brevard County.

**119 AM** - TORs for Orange and Osceola counties were extended due to lingering tornadic cells in eastern part of both counties. The warning emphasized: "TORNADOES HAVE ALREADY CLAIMED A LIFE IN VOLUSIA COUNTY! TAKE SHELTER NOW!!!"

**121 AM** - The SWC informed the Cape Canaveral Air Force Station (CCAFS) duty forecaster that a TOR was in the process of being issued for Brevard County.

**123 AM** - A TOR was issued for Brevard County for possible tornadic storms along and north of a line from Titusville to Cape Canaveral.

**130 - 200 AM** - Multiple news and EM reports of significant, widespread tornadic damage, injuries, and road closures were received at the office. Most noteworthy were the reports of near complete destruction of an apartment complex and a mobile home park in Winter Garden, and of homes, strip malls and a shopping center being "flattened" by a tornado which tracked from Campbell City to Kissimmee and Narcoosee. The Florida Turnpike near Kissimmee was closed due to debris. Injuries, some serious, were reported to be in the dozens.

**134 AM** - A SVS highlighted a tornado moving towards Titusville in Brevard County.

**145 AM** - Strong winds and power outages were reported in Port St. John, near Titusville in Brevard County.

**150 AM** - A SVS for Orange/Osceola/Brevard Counties listed possible tornadoes near Titusville, west of Cocoa, and southeast of St. Cloud.

**218 PM** - EM reported a confirmed fatality in Winter Garden.

**222 AM** - Brevard County Sheriff's dispatcher reported a waterspout over the Indian River near State Road 520.

**225 AM** - A SVS for Orange/Osceola/Brevard Counties highlighted a tornadic storm near Merritt Island and that the Brevard County TOR would be extended.

**227 AM** - A TOR for Brevard County mentioned that Merritt Island and Cape Canaveral were in the path of a tornadic storm.

**230 AM** - News reports confirmed 4 fatalities in an RV park in Kissimmee.

**245 AM** - The SWC coordinated with SPC on letting the Tornado Watch expire, since the threat for tornadoes was expected to decrease by 4 AM.

**246 AM** - A SVS for Brevard County alerted south Brevard County to the threat of tornadoes. It also relayed the report of 6 confirmed fatalities due to tornadoes.

**253 AM** - The SMW was extended south to Melbourne Beach due to continuing tornadic storms moving offshore.

**304 AM** - Another TOR was issued for Osceola County due to a developing circulation near Lake Kissimmee.

**313 AM** - A SVS advised residents of Deer Park in northeast Osceola County to seek shelter due to a tornadic storm headed in their direction.

**316 AM** - The TOR for Brevard County was extended due to the storm near Deer Park moving towards

rapidly northeast towards the county line.

**345 AM** - Brevard EM reported tornadic wind damage to trees, power lines and homes in Titusville and Merritt Island. In Port Canaveral, numerous boats were overturned at a marina, and many restaurants adjacent to the marina suffered major roof damage.

**401 AM** - A SVS relayed the damage reports from Brevard EM.

**419 AM** - A SVS reported all watches and warnings were now expired.

**600 AM** - A Public Information Statement declared this tornadic outbreak to be "POSSIBLY THE MOST DEVASTATING IN THE HISTORY OF FLORIDA" with over 20 fatalities.

**620 AM** - A LSR was issued with an updated figure of 27 fatalities from 4 tornadoes.

### Summary of Tornadoes

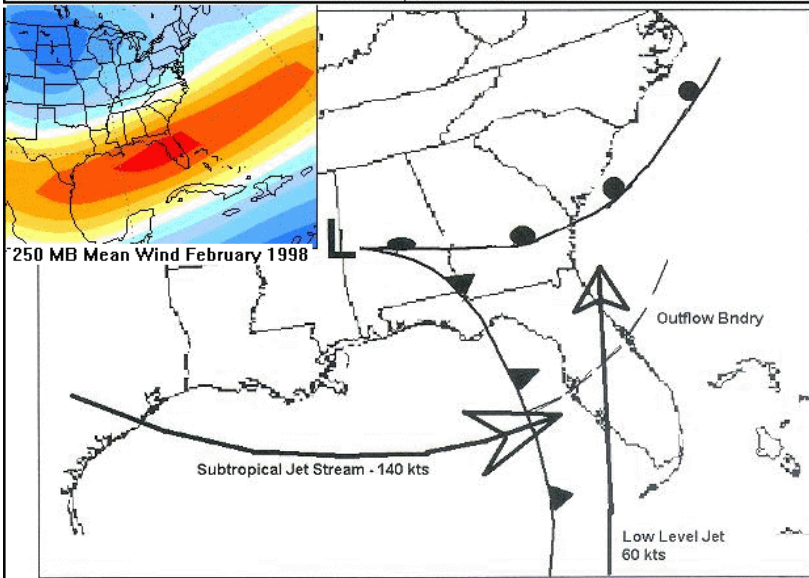
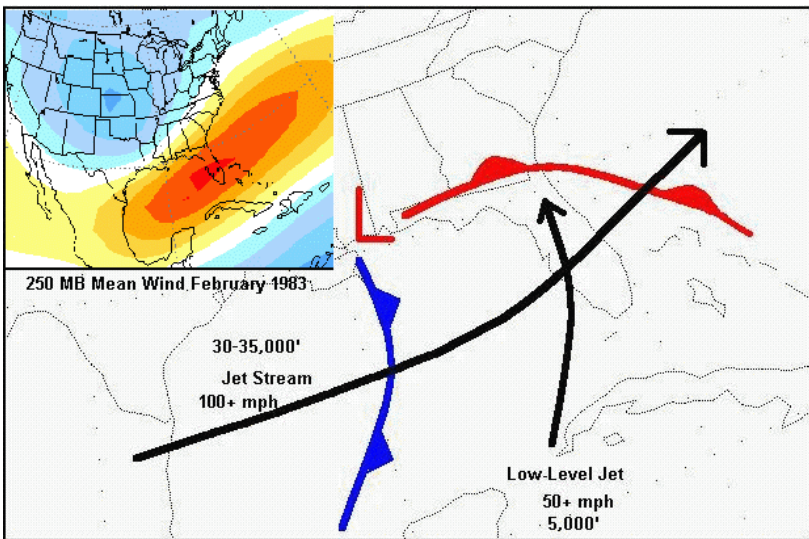
County	Warning Issued	Began/Entered County	First Fatality	Ended/Exited County
Volusia (1)	1022 PM	1055 PM	1058 PM	1105 PM
Lake	1127 PM	1137 PM	none	1141 PM
Orange	1137 PM	1141 PM	1150 PM	1200 midnight
Seminole (2)	1156 PM	1210 AM	1215 AM	1225 AM
Volusia	1214 AM	1245 AM	none	1250 AM
Osceola	1222 AM	1240 AM	12:50 AM	1255 AM
Orange (3)	1240 AM	1255 AM	none	128 AM
Brevard (4)	123 AM	138 AM	none	140 AM
Brevard (5)	227 AM	230 AM	none	233 AM

**Note:** A SVS was issued for each of the counties denoted by (1) through (5) to give advance notice that a Tornado Warning was either about to be issued (I) or extended (E) as follows:

(1) 1010 PM - I (2) 1146 PM - I (3) 1237 AM - E (4) 108 AM - I (5) 225 AM - E

### FUJITA TORNADO DAMAGE SCALE

F0	SLIGHT DAMAGE	LESS THAN 73 MPH
F1	MODERATE DAMAGE	73-112 MPH
F2	CONSIDERABLE DAMAGE	113-157 MPH
F3	SEVERE DESTRUCTION	158-206 MPH
F4	COMPLETE DESTRUCTION	207-260 MPH
F5	COMPLETE DESTRUCTION	GREATER THAN 260 MPH



ZCZC MIASPSMIA  
 TTAA00 KMIA 201937  
 AMZ335-354-374-435-450-452-454-470-472-474-50-555-570-575-610-630-  
 631-650>654-656-670>676-FLZ016>078-GMZ755-775-830-850-853-856-870-  
 873-876-221800-

SPECIAL WEATHER STATEMENT  
 NATIONAL WEATHER SERVICE MIAMI FL  
 233 PM EST FRI FEB 20 1998

...ANOTHER STRONG WEATHER SYSTEM TO AFFECT FLORIDA AND MARINERS  
 LATE THIS WEEKEND...

THIS STATEMENT APPLIES TO ALL OF FLORIDA.

SATURDAY SHOULD BE A FAIRLY NICE DAY ACROSS THE SUNSHINE STATE.  
 HOWEVER... CURRENT COMPUTER MODELS INDICATE ANOTHER STRONG  
 WEATHER SYSTEM WILL DEVELOP OVER THE GULF AND MOVE  
 TOWARDS FLORIDA LATE SUNDAY.

PRESENT INDICATIONS ARE THIS SYSTEM WILL NOT BE AS STRONG AS THE  
 STORMS THAT AFFECTED FLORIDA ON GROUNDHOG DAY AND VALENTINE'S DAY.

THE GREATEST THREAT WILL BE TO MARINERS IN THE GULF OF MEXICO THIS WEEKEND AS GALE FORCE WINDS FROM THE EAST AND SOUTH DEVELOP. THE THREAT OF COASTAL FLOODING APPEARS TO BE MINIMAL FOR THE GULF COASTAL COUNTIES OF FLORIDA. HOWEVER... MARINERS OPERATING IN THE ATLANTIC COASTAL WATERS AND FLORIDA STRAITS WILL FIND CONDITIONS DETERIORATING RAPIDLY ON SUNDAY.

WINDY AND RAINY CONDITIONS ARE EXPECTED STATEWIDE BY SUNDAY NIGHT AND MONDAY. ANOTHER THREAT THAT THIS WEATHER SYSTEM POSES IS THE POTENTIAL FOR PROLONGED RAINFALL. THIS COULD AGGRAVATE EXISTING RIVER FLOODING ACROSS NORTH AND CENTRAL FLORIDA LATE SUNDAY AND MONDAY.

ADDITIONAL STATEMENTS WILL BE ISSUED BY NATIONAL WEATHER SERVICE OFFICES IN TALAHASSEE... TAMPA BAY... JACKSONVILLE... MELBOURNE... AND MIAMI THROUGHOUT THE WEEKEND. MEMBERS OF THE EMERGENCY MANAGEMENT COMMUNITY AND OTHERS WITH OUTDOOR INTERESTS ON SUNDAY AND MONDAY SHOULD MONITOR WEATHER CONDITIONS CLOSELY BEGINNING SATURDAY NIGHT.

RB

---

ZCZC MIASPSMIA  
TTAA00 KMIA 201937  
AMZ335-354-374-435-450-452-454-470-472-474-50-555-570-575-610-630-  
631-650>654-656-670>676-FLZ016>078-GMZ755-775-830-850-853-856-870-  
873-876-212300-

SPECIAL WEATHER STATEMENT  
NATIONAL WEATHER SERVICE MIAMI FL  
545 AM EST SAT FEB 21 1998

...ANOTHER STRONG WEATHER SYSTEM TO AFFECT FLORIDA AND MARINERS LATE THIS WEEKEND...

THIS STATEMENT APPLIES TO ALL OF FLORIDA.

TODAY SHOULD BE A FAIRLY NICE DAY ACROSS THE SUNSHINE STATE. HOWEVER... CURRENT WEATHER SERVICE COMPUTER MODELS CONTINUE TO INDICATE ANOTHER STRONG LOW PRESSURE AREA DEVELOPING OVER THE WESTERN GULF OF MEXICO TODAY. ONCE THIS LOW PRESSURE AREA FORMS IT WILL MOVE TOWARD FLORIDA AND IS EXPECTED TO PASS OVER NORTH FLORIDA LATE SUNDAY.

PRESENT INDICATIONS ARE THIS SYSTEM WILL NOT BE AS STRONG AS THE STORMS THAT AFFECTED FLORIDA ON GROUNDHOG DAY AND VALENTINE'S DAY. HOWEVER...THIS SYSTEM WILL BE STRONG ENOUGH TO PRODUCE THUNDERSTORMS OVER THE STATE. SOME OF THESE THUNDERSTORMS COULD BE SEVERE WITH THE GREATEST THREAT OF SEVERE THUNDERSTORMS AND POSSIBLY EVEN TORNADOES OVER THE NORTHERN AND CENTRAL COUNTIES SUNDAY.

ANOTHER THREAT WILL BE TO MARINERS IN THE GULF OF MEXICO LATE TONIGHT AND SUNDAY AS WINDS POSSIBLE UP TO GALE FORCE FROM THE EAST AND SOUTH DEVELOP. THE THREAT OF COASTAL FLOODING APPEARS TO BE MINIMAL FOR THE GULF COASTAL COUNTIES OF FLORIDA.

MARINERS OPERATING IN THE ATLANTIC COASTAL WATERS AND FLORIDA STRAITS WILL FIND CONDITIONS DETERIORATING RAPIDLY ON SUNDAY.  
http://www.nwr.noaa.gov/FloridaResearch.html

STRAITS WILL ALSO FIND CONDITIONS DETERIORATING RAPIDLY ON SUNDAY.

WINDY AND RAINY CONDITIONS ARE EXPECTED STATEWIDE BY SUNDAY NIGHT AND MONDAY. ANOTHER THREAT THAT THIS WEATHER SYSTEM POSES IS THE POTENTIAL FOR PROLONGED RAINFALL. THIS COULD AGGRAVATE EXISTING RIVER FLOODING ACROSS NORTH AND CENTRAL FLORIDA SUNDAY AND MONDAY.

ADDITIONAL STATEMENTS WILL BE ISSUED BY NATIONAL WEATHER SERVICE OFFICES IN TALAHASSEE...TAMPA BAY...JACKSONVILLE...MELBOURNE... AND MIAMI THROUGHOUT THE WEEKEND. MEMBERS OF THE EMERGENCY MANAGEMENT COMMUNITY AND OTHERS WITH OUTDOOR INTERESTS ON SUNDAY AND MONDAY SHOULD MONITOR WEATHER CONDITIONS CLOSELY BEGINNING TONIGHT.

ESPOSITO

---

ZCZC MIASPSMIA

TTAA00 KMIA 201937

AMZ335-354-374-435-450-452-454-470-472-474-50-555-570-575-610-630-631-650>654-656-670>676-FLZ016>078-GMZ755-775-830-850-853-856-870-873-876-212300-

SPECIAL WEATHER STATEMENT

NATIONAL WEATHER SERVICE MIAMI FL

545 AM EST SAT FEB 21 1998

...ANOTHER STRONG WEATHER SYSTEM TO AFFECT FLORIDA AND MARINERS LATE THIS WEEKEND...

THIS STATEMENT APPLIES TO ALL OF FLORIDA.

TODAY SHOULD BE A FAIRLY NICE DAY ACROSS THE SUNSHINE STATE. HOWEVER... CURRENT WEATHER SERVICE COMPUTER MODELS CONTINUE TO INDICATE ANOTHER STRONG LOW PRESSURE AREA DEVELOPING OVER THE WESTERN GULF OF MEXICO TODAY. ONCE THIS LOW PRESSURE AREA FORMS IT WILL MOVE TOWARD FLORIDA AND IS EXPECTED TO PASS OVER NORTH FLORIDA LATE SUNDAY.

PRESENT INDICATIONS ARE THIS SYSTEM WILL NOT BE AS STRONG AS THE STORMS THAT AFFECTED FLORIDA ON GROUNDHOG DAY AND VALENTINE'S DAY. HOWEVER...THIS SYSTEM WILL BE STRONG ENOUGH TO PRODUCE THUNDERSTORMS OVER THE STATE. SOME OF THESE THUNDERSTORMS COULD BE SEVERE WITH THE GREATEST THREAT OF SEVERE THUNDERSTORMS AND POSSIBLY EVEN TORNADOES OVER THE NORTHERN AND CENTRAL COUNTIES SUNDAY.

ANOTHER THREAT WILL BE TO MARINERS IN THE GULF OF MEXICO LATE TONIGHT AND SUNDAY AS WINDS POSSIBLE UP TO GALE FORCE FROM THE EAST AND SOUTH DEVELOP. THE THREAT OF COASTAL FLOODING APPEARS TO BE MINIMAL FOR THE GULF COASTAL COUNTIES OF FLORIDA.

MARINERS OPERATING IN THE ATLANTIC COASTAL WATERS AND FLORIDA STRAITS WILL ALSO FIND CONDITIONS DETERIORATING RAPIDLY ON SUNDAY.

WINDY AND RAINY CONDITIONS ARE EXPECTED STATEWIDE BY SUNDAY NIGHT AND MONDAY. ANOTHER THREAT THAT THIS WEATHER SYSTEM POSES IS THE

POTENTIAL FOR PROLONGED RAINFALL. THIS COULD AGGRAVATE EXISTING RIVER FLOODING ACROSS NORTH AND CENTRAL FLORIDA SUNDAY AND MONDAY.

ADDITIONAL STATEMENTS WILL BE ISSUED BY NATIONAL WEATHER SERVICE OFFICES IN TALAHASSEE...TAMPA BAY...JACKSONVILLE...MELBOURNE... AND MIAMI THROUGHOUT THE WEEKEND. MEMBERS OF THE EMERGENCY MANAGEMENT COMMUNITY AND OTHERS WITH OUTDOOR INTERESTS ON SUNDAY AND MONDAY SHOULD MONITOR WEATHER CONDITIONS CLOSELY BEGINNING TONIGHT.

ESPOSITO

---

ZCZC MIASPSMLB  
TTAAOO KMLB 222325  
AMZ550-570-575-FLZ041-044>047-053-054-058-059-064-222359-

EAST CENTRAL FLORIDA HAZARDOUS WEATHER OUTLOOK...UPDATED...  
NATIONAL WEATHER SERVICE MELBOURNE FL  
1155 AM EST SUN FEB 22 1998

...SIGNIFICANT THREAT OF DAMAGING THUNDERSTORM WINDS...HAIL...AND TORNADOES THIS AFTERNOON AND EVENING...

...FLOOD WATCH NORTHWARD FROM ABOUT VERO BEACH AND LAKE KISSIMMEE THROUGH TONIGHT...

A LINE OF STRONG THUNDERSTORMS WILL MOVE RAPIDLY ACROSS NORTHERN FLORIDA EARLY THIS AFTERNOON...WITH MOST STORMS REMAINING NORTH OF LAKE AND VOLUSIA COUNTIES.

DURING THE EARLY TO MID AFTERNOON...SCATTERED THUNDERSTORMS WILL DEVELOP IN THE UNSTABLE AIRMASS ACROSS THE CENTRAL FLORIDA PENINSULA. A FEW OF THESE STORMS MAY BECOME STRONG OR SEVERE AND PRODUCE DAMAGING WIND GUSTS OR HAIL.

THE THREAT OF SEVERE WEATHER AND HEAVY RAINFALL WILL INCREASE DURING THE LATE AFTERNOON AND EVENING AS A COMPLEX OF THUNDERSTORMS MOVES ONSHORE FROM THE GULF OF MEXICO. LOW LEVEL WIND SHEAR WILL BECOME FAVORABLE FOR THUNDERSTORM WIND GUSTS ABOVE 55 MPH... LARGE HAIL...AND ISOLATED TORNADOES. THE GREATEST THREAT IS EXPECTED TO OCCUR NEAR A WARM FRONT WHICH IS FORECAST TO LIE NEAR A LINE FROM TAMPA TO CAPE CANAVERAL. FREQUENT LIGHTNING STRIKES ARE ALSO POSSIBLE WITH THESE STORMS. WITH RAPID EAST NORTHEAST MOVEMENT AT 40 TO 50 MPH...PEOPLE SHOULD SEEK SHELTER WELL IN ADVANCE OF APPROACHING STORMS.

VERY HEAVY RAINFALL WILL ACCOMPANY THE STRONGER THUNDERSTORMS. RAIN MAY LINGER ACROSS MUCH OF THE AREA INTO THE LATE EVENING. AVERAGE AMOUNTS ARE EXPECTED TO BE NEAR 1 INCH... WITH LOCAL TOTALS OF 2 OR 3 INCHES ALONG THE PATH OF THE STRONGER STORMS AND WHERE SHOWERS REPEATEDLY OCCUR AT A LOCATION. THIS ADDITIONAL RAINFALL WILL UNDOUBTEDLY AGGRAVATE CONDITIONS IN FLOODED AREAS AND MAY CAUSE FLOOD CONCERNS IN OTHER LOCATIONS AS WELL.

PEOPLE ACROSS EAST CENTRAL FLORIDA SHOULD BE ALERT FOR RAPIDLY CHANGING WEATHER CONDITIONS THROUGH THIS EVENING AND ANTICIPATE THAT THERE WILL BE SEVERE WEATHER WATCHES ISSUED. KEEP ABREAST OF THE LATEST WEATHER DEVELOPMENTS. ACTIVATION OF STORM SPOTTERS WILL BE LIKELY BY LATE THIS AFTERNOON.

SPRATT

---

ZCZC MIAMOWMLB  
ETTAA00 KMLB 230210

SHORT TERM FORECAST  
NATIONAL WEATHER SERVICE MELBOURNE FL  
909 PM EST SUN FEB 22 1998

AMZ550-570-575-FLZ041-044>046-230415-  
COASTAL WATERS NORTH OF COCOA BEACH-  
COASTAL WATERS FROM COCOA BEACH SOUTH – VOLUSIA-LAKE-ORANGE-SEMINOLE-

.NOW...  
...THREAT FOR STRONG STORMS INCREASING FOR LAKE AND VOLUSIA COUNTIES...  
THROUGH 1100 PM...RAIN AND SCATTERED THUNDERSTORMS WILL BEGIN TO  
OVERSPREAD EAST CENTRAL FLORIDA NORTH OF A LINE FROM ST CLOUD TO  
ORLANDO AND EDGEWATER. A CLUSTER OF STRONG STORMS MOVING ONSHORE THE WEST COAST  
OF FLORIDA WILL MOVE INTO LAKE COUNTY BETWEEN 10PM AND 1030PM...AND INTO VOLUSIA  
COUNTY BETWEEN 1030 AND 11PM. THESE STORMS WILL BE CAPABLE OF PRODUCING STRONG  
GUSTY WINDS...TORRENTIAL DOWNPOURS AND FREQUENT LIGHTNING. CONDITIONS REMAIN FAVORABLE  
FOR ISOLATED TORNADOES TO DEVELOP...THEREFORE A TORNADO WATCH REMAINS IN EFFECT UNTIL  
3AM MONDAY. CRISTALDI

\$\$

---

ZCZC MIANOWMLB  
TTAA00 KMLB 230240

SHORT TERM FORECAST  
NATIONAL WEATHER SERVICE MELBOURNE FL  
939 PM EST SUN FEB 22 1998

FLZ044-230345-  
LAKE-

.NOW...  
...THREAT FOR SEVERE THUNDERSTORMS AND ISOLATED TORNADOES INCREASING...  
SEVERE THUNDERSTORMS WITH DAMAGING WIND GUSTS AND POSSIBLE ISOLATED TORNADOES WILL  
MOVE ACROSS NORTHERN AND CENTRAL SUMTER COUNTY...AND MAY MOVE INTO NORTHWESTERN  
LAKE COUNTY FROM LAKE GRIFFIN TO LADY LAKE AND EMERALD BETWEEN 950 AND 1010PM. RESIDENTS  
IN THIS AREA SHOULD BE PREPARED FOR THE POSSIBILITY OF WARNINGS BEING ISSUED SHORTLY. CRISTALDI

\$\$

---

ZCZC MIATORMLB ALL 230350  
TTAA00 KMLB DDHHMM (2302245)  
FLC069-230350-

BULLETIN - EAS ACTIVATION REQUESTED  
TORNADO WARNING  
NATIONAL WEATHER SERVICE MELBOURNE FL  
945 PM EST SUN FEB 22 1998

THE NATIONAL WEATHER SERVICE IN MELBOURNE FL HAS ISSUED A  
<http://www.nw.gov/mel/research.html>

TORNADO WARNING EFFECTIVE UNTIL 1050 PM EST  
FOR PEOPLE IN THE FOLLOWING LOCATION...

IN EAST CENTRAL FLORIDA

...LAKE COUNTY

AT 945 PM...DOPPLER RADAR INDICATED A POSSIBLE TORNADO APPROACHING  
WILDWOOD IN SUMTER COUNTY. THE STORM CONTAINING THE POSSIBLE TORNADO WILL MOVE  
INTO WESTERN LAKE COUNTY NEAR LAKE GRIFFIN AND WILL MOVE ACROSS LADY LAKE AND  
EMERALD BETWEEN 955 AND 1015 PM.

IF YOU ARE IN THE PATH OF A TORNADO...ABANDON CARS AND MOBILE  
HOMES FOR A REINFORCED BUILDING OR GET INTO A DITCH OR CULVERT.  
THE SAFEST PLACE IS AN INTERIOR ROOM SUCH AS A CLOSET ON THE LOWEST  
FLOOR OF A STRONG BUILDING. AVOID WINDOWS.

---

ZCZC MIASVSMMLB ALL 230400  
TTAA00 KMLB DDHHMM (230311)  
FLZ041-044-230400-

SEVERE WEATHER STATEMENT  
NATIONAL WEATHER SERVICE MELBOURNE FL  
1010 PM EST SUN FEB 22 1998

...TORNADO WARNING CONTINUES FOR LAKE COUNTY UNTIL 1050 PM...

AT 1004 PM...DIME SIZED HAIL WAS REPORTED BY SKYWARN SPOTTERS IN  
ALTOONA. RADAR CONTINUES TO INDICATE SEVERE THUNDERSTORMS OVER  
MUCH OF NORTHWESTERN LAKE COUNTY...WITH A POSSIBLE TORNADIC  
CIRCULATION NORTH OF LISBON. THE STORM WITH THE POSSIBLE TORNADO  
WILL MOVE ACROSS ALTOONA...PAISLEY AND ASTOR PARK.

RESIDENTS OF NORTHWEST VOLUSIA COUNTY SHOULD BE ALERT TO THE  
POSSIBILITY OF SEVERE WEATHER WARNINGS BEING ISSUED FOR THESE STORMS.

CRISTALDI

&

---

MIASPSMLB  
TTAA00 KMLB 230342  
AMZ550-570-575-FLZ041-044>047-053-054-058-059-064-230530-

EAST CENTRAL FLORIDA HAZARDOUS WEATHER OUTLOOK  
NATIONAL WEATHER SERVICE MELBOURNE FL  
1040 PM EST SUN FEB 22 1998

...TORNADO WATCH IN EFFECT FOR MOST OF CENTRAL FLORIDA UNTIL 3 AM...

A LINE OF STRONG TO SEVERE THUNDERSTORMS WILL CONTINUE TO MOVE ACROSS THE NORTH  
AND CENTRAL FLORIDA PENINSULA THROUGH THE REMAINDER OF THIS EVENING AND INTO THE  
EARLY MORNING HOURS OF MONDAY.



ANOTHER ROUND OF SEVERE WEATHER IS EXPECTED!

THE ATMOSPHERE IS STILL PRIMED FOR SEVERE WEATHER. ABUNDANT MOISTURE AND FAVORABLE VERTICAL WIND SHEAR HAVE POISED THE ENVIRONMENT FOR THE POTENTIAL FOR TORNADOES. LARGE HAIL...DAMAGING WINDS...AND TORNADOES HAVE ALREADY OCCURRED WITH THIS SYSTEM. MORE SEVERE WEATHER IS EXPECTED TONIGHT.

EMERGENCY MANAGEMENT OFFICIALS AND LAW ENFORCEMENT AGENCIES ARE URGED TO COORDINATE WITH THE LOCAL NATIONAL WEATHER SERVICE. THIS IS A DANGEROUS SITUATION! SPOTTERS ARE ENCOURAGED TO KEEP AN EYE TO THE SKY AND RELAY ALL INFORMATION BACK TO THE NATIONAL WEATHER SERVICE.

AREA RESIDENTS SHOULD BE READY TO REACT QUICKLY IF A TORNADO WARNING IS ISSUED FOR THEIR AREA. REMAIN INFORMED OF THE LATEST WEATHER SITUATION FOR YOUR COUNTY BY LISTENING TO NOAA WEATHER RADIO OR OTHER LOCAL NEWS MEDIA.

SHARP

---

ZCZC MIATORMLB ALL 230530  
TTAA00 KMLB DDHHMM (230427)  
FLC069-230530-

BULLETIN - EAS ACTIVATION REQUESTED  
TORNADO WARNING  
NATIONAL WEATHER SERVICE MELBOURNE FL  
1127 PM EST SUN FEB 22 1998

THE NATIONAL WEATHER SERVICE IN MELBOURNE FL HAS ISSUED A  
TORNADO WARNING EFFECTIVE UNTIL 1230 AM EST  
FOR PEOPLE IN THE FOLLOWING LOCATION...

IN EAST CENTRAL FLORIDA

...LAKE COUNTY

AT 1125 PM EST...WEATHER RADAR INDICATED TWO SEVERE THUNDERSTORMS  
OVER LAKE COUNTY. ONE WAS ABOUT 5 MILES SOUTHWEST OF CLERMONT AND ANOTHER WAS  
BETWEEN LEESBURG AND TAVARES...REACHING TO NEAR LISBON. THESE STORMS WERE BEGINNING TO  
SHOW SIGNS OF TORNADIC DEVELOPMENT. RESIDENTS IN LAKE COUNTY SHOULD TAKE COVER AT THE  
FIRST SIGNS OF THESE APPROACHING THUNDERSTORMS. THEY WERE MOVING NORTHEAST AT 45 MPH.

IF YOU ARE CAUGHT OUTSIDE IN THE PATH OF A TORNADO...SEEK SHELTER IN  
A NEARBY REINFORCED BUILDING. AS A LAST RESORT...SEEK SHELTER IN  
A DITCH OR LOW SPOT AND COVER YOUR HEAD WITH YOUR HANDS.

---

ZCZC MIATORMLB ALL 230540  
TTAA00 KMLB DDHHMM (230437)  
FLC095-230540-

BULLETIN - EAS ACTIVATION REQUESTED  
TORNADO WARNING  
NATIONAL WEATHER SERVICE MELBOURNE FL  
1137 PM EST SUN FEB 22 1998

THE NATIONAL WEATHER SERVICE IN MELBOURNE FL HAS ISSUED A  
<http://www.nwr.weather.gov/mf/research.html>

TORNADO WARNING EFFECTIVE UNTIL 1240 AM EST  
FOR PEOPLE IN THE FOLLOWING LOCATION...

IN EAST CENTRAL FLORIDA

...WESTERN ORANGE COUNTY

AT 1135 PM EST...WEATHER RADAR INDICATED A SEVERE THUNDERSTORM AND POSSIBLE TORNADO  
OVER LAKE COUNTY NEAR CLERMONT. THIS STORM WAS MOVING NORTHEAST AT 45 MPH AND WILL  
MOVE INTO ORANGE COUNTY  
AND APPROACH WINTER GARDEN...LAKE APOPKA...AND OCOEE.

RESIDENTS IN THE PATH OF THIS STORM SHOULD TAKE COVER NOW!

IF YOU ARE IN THE PATH OF A TORNADO...ABANDON CARS AND MOBILE  
HOMES FOR A REINFORCED BUILDING OR GET INTO A DITCH OR CULVERT.  
THE SAFEST PLACE IS AN INTERIOR ROOM SUCH AS A CLOSET ON THE LOWEST  
FLOOR OF A STRONG BUILDING. AVOID WINDOWS.

---

ZCZC MIASVSMLB ALL 230550  
TTAA00 KMLB DDHHMM (230446)  
FLZ041-044>046-053-230550-

SEVERE WEATHER STATEMENT  
NATIONAL WEATHER SERVICE MELBOURNE FL  
1146 PM EST SUN FEB 22 1998

...TORNADO WARNING FOR VOLUSIA COUNTY UNTIL 1205 AM...  
...TORNADO WARNING FOR LAKE COUNTY UNTIL 1230 AM...  
...TORNADO WARNING FOR ORANGE COUNTY UNTIL 1240 AM...

AT 1137 PM...RADAR SHOWED SEVERE THUNDERSTORMS IN LAKE COUNTY NEAR ALTOONA...PAISLEY AND  
JUST EAST OF CLERMONT...WITH A POSSIBLE TORNADIC CIRCULATION ALONG U.S. 27 SOUTH OF  
CLERMONT. THE STORMS WILL MOVE NORTHEAST AT 45 MPH INTO DELAND AND DELEON SPRINGS...AND  
TO NEAR WINTER GARDEN...OCOEE AND APOPKA. THESE STORMS WILL THEN MOVE INTO SEMINOLE  
COUNTY NEAR ALTAMONTE SPRINGS... CASSELBERRY AND LONGWOOD.

RESIDENTS OF SEMINOLE COUNTY SHOULD BE PREPARED FOR THE POSSIBILITY OF WARNINGS BEING  
ISSUED SHORTLY.

CRISTALDI

---



Video of the Winter Garden tornado, looking north from Windermere, about 5 miles away. As is often the case with tornadoes at night, it only became visible once it was backlit by lightning.

---

ZCZC MIASVSMMLB ALL 230525  
TTAA00 KMLB DDHMM (230451)  
FLZ045-2305250

SEVERE WEATHER STATEMENT  
NATIONAL WEATHER SERVICE MELBOURNE FL  
1151 PM EST SUN FEB 22 1998

...TORNADO ON THE GROUND IN WINTER GARDEN...

AT 1150 PM...HAM RADIO OPERATORS REPORTED A TORNADO ON THE GROUND IN WINTER GARDEN NEAR S. R. 545 MOVING TOWARDS S.R. 535. THIS STORM IS MOVING TOWARDS OCOEE AND APOPKA. RESIDENTS IN THIS AREA SHOULD MOVE INTO AN INTERIOR ROOM...AWAY FROM WINDOWS AT ONCE!!

CRISTALDI

&

---

ZCZC MIATORMMLB ALL 230555  
TTAA00 KMLB DDHMM (230456)  
FLC117-230555-

BULLETIN - EAS ACTIVATION REQUESTED  
TORNADO WARNING  
NATIONAL WEATHER SERVICE MELBOURNE FL  
1156 PM EST SUN FEB 22 1998

THE NATIONAL WEATHER SERVICE IN MELBOURNE FL HAS ISSUED A  
TORNADO WARNING EFFECTIVE UNTIL 1255 AM EST  
FOR PEOPLE IN THE FOLLOWING LOCATION...

IN EAST CENTRAL FLORIDA

...SEMINOLE COUNTY

AT 1155 PM...WEATHER RADAR SHOWED A STRONG TORNADIC CIRCULATION WITHIN SEVERE THUNDERSTORMS MOVING TOWARDS APOPKA. THESE STORMS WILL MOVE NORTHEAST AT 45 MPH AND INTO SEMINOLE COUNTY NEAR FOREST CITY ...WEATHERFIELD AND ALTAMONTE SPRINGS. IT WILL THEN MOVE TO NEAR LONGWOOD...ALTAMONTE SPRINGS...MAITLAND AND LAKE MARY.

THIS STORM HAS A HISTORY OF PRODUCING FUNNEL CLOUDS AND REPORTEDLY PRODUCED A TORNADO TOUCHDOWN IN THE WINTER GARDEN AREA. IF YOU LIVE IN THIS AREA OF SEMINOLE COUNTY...TAKE SHELTER NOW!!!

THIS STORM THIS IS A DANGEROUS STORM. ACT QUICKLY. IF YOU ARE IN THE PATH OF THIS TORNADO MOVE TO A SHELTER IF AVAILABLE. OTHERWISE GO TO A SMALL INTERIOR ROOM ON THE LOWEST FLOOR POSSIBLE. AVOID WINDOWS. ABANDON CARS AND MOBILE HOMES OR A REINFORCED BUILDING OR GET INTO A DITCH OR CULVERT.

---

ZCZC MIANOWMLB  
TTAA00 KMLB 230506

SHORT TERM FORECAST  
NATIONAL WEATHER SERVICE MELBOURNE FL  
1205 AM EST MON FEB 23 1998

AMZ550-570-575-FLZ041-044>047-053-054-058-059-064-230700-  
COASTAL WATERS NORTH OF COCOA BEACH-  
COASTAL WATERS FROM COCOA BEACH SOUTH-VOLUSIA-LAKE-ORANGE-SEMINOLE- BREVARD-  
OSCEOLA-INDIAN RIVER-OKEECHOBEE-ST. LUCIE-MARTIN-

.NOW...  
...TORNADO WATCH FOR MOST OF EAST CENTRAL FLORIDA THROUGH 3AM...  
THROUGH 2AM...STRONG TO SEVERE THUNDERSTORMS WILL OCCUR FROM TAMPA AND SARASOTA...TO  
NEAR LAKE LAND...TO NEAR ORLANDO AND KISSIMMEE...TO LEESBURG AND SANFORD...TO DAYTONA  
BEACH AND FLAGLER BEACH. SEVERAL OF THESE STORMS WILL LIKELY PRODUCE TORNADOES.  
TORNADIC STORMS ARE POSSIBLE OVER NORTH POLK COUNTY NORTH OF LAKE LAND...TO ACROSS  
WEST ORANGE COUNTY NEAR APOPKA...INTO WEST SEMINOLE COUNTY NEAR LAKE MARY. OTHER  
STORMS WILL BE CAPABLE OF DAMAGING WINDS AND LARGE HAIL AS THEY MOVE QUICKLY NORTHEAST AT  
45 MPH.

\$\$

---

ZCZC MIASVSMLB ALL 230615  
TTAA00 KMLB DDHHMM (230511)  
FLZ041-044>046-053-2306150

SEVERE WEATHER STATEMENT  
NATIONAL WEATHER SERVICE MELBOURNE FL  
1211 AM EST MON FEB 23 1998

...TORNADO WARNING FOR LAKE COUNTY UNTIL 1230 AM EST...  
...TORNADO WARNING FOR ORANGE COUNTY UNTIL 1240 AM EST...  
...TORNADO WARNING FOR SEMINOLE COUNTY UNTIL 1255 AM EST...

AT 1210 AM EST...WEATHER RADAR INDICATED A TORNADO JUST SOUTHWEST OF LONGWOOD  
AND ALTAMONTE SPRINGS MOVING NORTHEAST TOWARDS THESE LOCATIONS. THE TORNADO  
WILL CONTINUE NORTHEAST TOWARDS LAKE MARY AND THEN SANFORD.

TORNADIC DAMAGE REPORTS HAVE BEEN RECEIVED AT THE NATIONAL WEATHER SERVICE TO

INCLUDE DAMAGE AT A CONVENIENCE STORE AT HIGHWAY 525 AND 50 IN WINTER GARDEN. SOME INJURIES WERE REPORTED. NUMEROUS CARS WERE ALSO REPORTED TO BE DAMAGED.

RESIDENTS IN THE PATH OF THIS TORNADO SHOULD ACT NOW TO PROTECT THEIR LIVES!

SHARP

&

---

ZCZC MIATORMLB ALL 230615  
TTAA00 KMLB DDHMM (230514)  
AMZ550-FLC127-230615-

BULLETIN - EAS ACTIVATION REQUESTED  
TORNADO WARNING  
NATIONAL WEATHER SERVICE MELBOURNE FL  
1214 AM EST MON FEB 23 1998

THE NATIONAL WEATHER SERVICE IN MELBOURNE FL HAS ISSUED A  
TORNADO WARNING EFFECTIVE UNTIL 115 AM EST  
FOR PEOPLE IN THE FOLLOWING LOCATION...

IN EAST CENTRAL FLORIDA

...VOLUSIA COUNTY

AT 1212 AM EST...WEATHER RADAR INDICATED A TORNADO NEAR LAKE MARY IN SEMINOLE COUNTY  
MOVING RAPIDLY NORTHEAST AT 45 MPH. THIS TORNADO WILL ENTER INTO VOLUSIA COUNTY  
NEAR DELTONA AND ENTERPRISE...TO NEAR OSTEEN...TO NEAR LAKE ASHBY.

RESIDENTS SHOULD ACT NOW TO PROTECT THEMSELVES!

SHARP

---

ZCZC MIATORMLB ALL 230620  
TTAA00 KMLB DDHMM (230522)  
FLC097-230620-

BULLETIN - EAS ACTIVATION REQUESTED  
TORNADO WARNING  
NATIONAL WEATHER SERVICE MELBOURNE FL  
1222 AM EST MON FEB 23 1998

THE NATIONAL WEATHER SERVICE IN MELBOURNE FL HAS ISSUED A  
TORNADO WARNING EFFECTIVE UNTIL 120 AM EST  
FOR PEOPLE IN THE FOLLOWING LOCATION...

IN EAST CENTRAL FLORIDA

...NORTHERN OSCEOLA COUNTY

AT 1218 AM EST...WEATHER RADAR INDICATED A POSSIBLE TORNADO ABOUT 8 MILES NORTHEAST  
OF LAKELAND MOVING RAPIDLY NORTHEAST AT 45 MPH. THIS SEVERE THUNDERSTORM AND  
POSSIBLE TORNADO WILL MOVE INTO NORTHWEST OSCEOLA COUNTY NEAR INTERCESSION  
CITY...KISSIMEE...AND THE ATTRACTIONS AREA. THE STORM WILL LIKELY CONTINUE INTO  
NORTHWEST OSCEOLA COUNTY NEAR INTERCESSION CITY...KISSIMEE...AND THE ATTRACTIONS AREA.

SOUTHWEST ORANGE COUNTY.

A TORNADO WARNING REMAINS IN EFFECT FOR WESTERN ORANGE COUNTY UNTIL 1240 AM. THIS WARNING MAY BE EXTENDED.

CARS AND MOBILE HOMES CAN BE TOSSED ABOUT BY TORNADO WINDS. DO NOT TRY TO OUTFRAN A TORNADO IN YOUR VEHICLE. ABANDON VEHICLES AND MOBILE HOMES WHEN THREATENED BY A TORNADO AND GO TO A STRONG BUILDING. IF NO STRUCTURE IS NEARBY...SEEK SHELTER IN A DITCH OR LOW SPOT.

SHARP

---

ZCZC MIASVSMLB ALL 230640  
TTAA00 KMLB DDHMM (230537)  
FLZ041-044>046-053-230640-

SEVERE WEATHER STATEMENT  
NATIONAL WEATHER SERVICE MELBOURNE FL  
1237 AM EST MON FEB 23 1998

...TORNADO WARNING FOR ORANGE COUNTY UNTIL 1240 AM EST...  
...TORNADO WARNING FOR SEMINOLE COUNTY UNTIL 1255 AM EST...  
...TORNADO WARNING FOR VOLUSIA COUNTY UNTIL 115 AM EST...  
...TORNADO WARNING FOR OSCEOLA COUNTY UNTIL 120 AM EST...

...TORNADO WATCH FOR ALL OF EAST CENTRAL FLORIDA EXCEPT MARTIN COUNTY UNTIL 3AM EST...

AT 1235 AM EST...WEATHER RADAR INDICATED SEVERAL TORNADOES OVER EAST CENTRAL FLORIDA. ONE WAS NEAR OSTEEN IN VOLUSIA COUNTY...ANOTHER NEAR OCOEE AND MAITLAND IN ORANGE AND SEMINOLE COUNTIES...AND YET ANOTHER NEAR INTERCESSION CITY AND KISSIMMEE IN OSCEOLA COUNTY. THE TORNADOES HAVE BEEN MOVING NORTHEAST AT 45 MPH.

THE ORANGE COUNTY WARNING WILL LIKELY BE EXTENDED VERY SOON.

IF YOU LIVE IN A PATH FROM LAKELAND...TO INTERCESSION CITY AND KISSIMMEE...TO ORLANDO...TO OCOEE AND SANFORD...TO DELTONA...TO NEW SMYRNA BEACH AND DAYTONA BEACH...YOU SHOULD BE ON THE LOOK OUT FOR POSSIBLE TORNADOES APPROACHING FROM THE SOUTHWEST THROUGH 2 AM.

THE LINE OF SEVERE AND TORNADIC STORMS WILL GRADUALLY SHIFT EASTWARD WITH TIME DURING THE MORNING.

SHARP

---





Aerial view of the devastation at the Ponderosa RV Park caused by the Kissimmee Tornado

---

ZCZC MIATORMLB ALL 230625  
TTAA00 KMLB DDHMM (230540)  
FLC095-230625-

BULLETIN - EAS ACTIVATION REQUESTED  
TORNADO WARNING  
NATIONAL WEATHER SERVICE MELBOURNE FL  
1240 AM EST MON FEB 23 1998

THE NATIONAL WEATHER SERVICE IN MELBOURNE FL HAS ISSUED A  
TORNADO WARNING EFFECTIVE UNTIL 125 AM EST  
FOR PEOPLE IN THE FOLLOWING LOCATION...

IN EAST CENTRAL FLORIDA

...ORANGE COUNTY

AT 1240 AM EST...WEATHER RADAR INDICATED THAT SEVERE TO OCCASIONALLY TORNADIC  
THUNDERSTORMS WERE STILL AFFECTING THE COUNTY. A TORNADIC STORM WAS LOCATED  
NEAR KISSIMMEE. REPORTS OF FUNNEL CLOUDS WERE BEING RECEIVED AT THE TIME OF ISSUANCE OF  
THIS WARNING IN THE KISSIMMEE AREA.

CARS AND MOBILE HOMES CAN BE TOSSED ABOUT BY TORNADO WINDS. DO NOT TRY TO OUTFRAN  
A TORNADO IN YOUR VEHICLE. ABANDON VEHICLES AND MOBILE HOMES WHEN THREATENED BY A  
TORNADO AND GO TO A STRONG BUILDING. IF NO STRUCTURE IS NEARBY...SEEK SHELTER IN A DITCH  
OR LOW SPOT.

SHARP

&

---

MIATORMLB  
TTAA00 KMLB 230620  
FLC095-097-230720-

BULLETIN - EAS ACTIVATION REQUESTED  
TORNADO WARNING  
NATIONAL WEATHER SERVICE MELBOURNE FL  
119 AM EST MON FEB 23 1998

THE NATIONAL WEATHER SERVICE IN MELBOURNE FL HAS ISSUED A  
TORNADO WARNING EFFECTIVE UNTIL 220 AM EST  
FOR PEOPLE IN THE FOLLOWING LOCATION...

IN EAST CENTRAL FLORIDA

...ORANGE COUNTY  
...OSCEOLA COUNTY

AT 115 AM...RADAR SHOWED SEVERE A TORNADIC LINE OF SEVERE  
THUNDERSTORMS FROM BITHLO TO NARCOOSEE AND WEST LAKE TOHO



THESE STORMS WILL CROSS EASTERN ORANGE AND OSCEOLA COUNTIES AND LIKELY PRODUCE TORNADO TOUCHDOWNS FROM CHRISTMAS TO NARCOOSEE...AND KISSIMMEE/ST CLOUD.

TORNADOES HAVE ALREADY CLAIMED A LIFE IN VOLUSIA COUNTY!  
TAKE SHELTER NOW!!!

IF YOU ARE IN THE PATH OF A TORNADO...ABANDON CARS AND MOBILE HOMES FOR A REINFORCED BUILDING OR GET INTO A DITCH OR CULVERT. THE SAFEST PLACE IS AN INTERIOR ROOM SUCH AS A CLOSET ON THE LOWEST FLOOR OF A STRONG BUILDING. AVOID WINDOWS.

&

---

MIATORMLB  
TTAA00 KMLB 230624  
FLC009-230725-

BULLETIN - EAS ACTIVATION REQUESTED  
TORNADO WARNING  
NATIONAL WEATHER SERVICE MELBOURNE FL  
123 AM EST MON FEB 23 1998

THE NATIONAL WEATHER SERVICE IN MELBOURNE FL HAS ISSUED A TORNADO WARNING EFFECTIVE UNTIL 225 AM EST FOR PEOPLE IN THE FOLLOWING LOCATION...

IN EAST CENTRAL FLORIDA

...BREVARD COUNTY

AT 120 AM...DOPPLER RADAR SHOWED A TORNADO OVER EASTERN ORANGE COUNTY BETWEEN CHRISTMAS AND THE S. R. 520 TOLL BOOTH. THIS TORNADO WILL MOVE INTO NORTHERN BREVARD COUNTY FROM TITUSVILLE TO MIMS...SCOTTSMOOR...PLAYALINDA BEACH AND THE NORTHERN PART OF CAPE CANAVERAL.

TORNADOES HAVE ALREADY CLAIMED ONE LIFE IN VOLUSIA COUNTY. TAKE THIS SERIOUSLY!!! MOVE TO AN INTERIOR ROOM AWAY FROM WINDOWS AT ONCE!!!

THIS IS A DANGEROUS STORM. ACT QUICKLY. IF YOU ARE IN THE PATH OF THIS TORNADO MOVE TO A SHELTER IF AVAILABLE. OTHERWISE GO TO A SMALL INTERIOR ROOM ON THE LOWEST FLOOR POSSIBLE. AVOID WINDOWS. ABANDON CARS AND MOBILE HOMES FOR A REINFORCED BUILDING OR GET INTO A DITCH OR CULVERT.

---

ZCZC MIATORMLB ALL 230900  
TTAA00 KMLB DDHHMM (230804)  
FLC097-230900-

BULLETIN - EAS ACTIVATION REQUESTED  
TORNADO WARNING  
NATIONAL WEATHER SERVICE MELBOURNE FL  
304 AM EST MON FEB 23 1998

THE NATIONAL WEATHER SERVICE IN MELBOURNE FL HAS ISSUED A  
<http://www.nwr.weather.gov/mfb/research.html>

TORNADO WARNING EFFECTIVE UNTIL 400 AM EST  
FOR PEOPLE IN THE FOLLOWING LOCATION...

IN EAST CENTRAL FLORIDA

...OSCEOLA COUNTY

AT 300 AM...DOPPLER RADAR SHOWED A SEVERE THUNDERSTORM AND TORNADIC CIRCULATION DEVELOPING JUST EAST OF THE SOUTH END OF LAKE KISSIMMEE, THE STORM AND POSSIBLE TORNADO WILL MOVE NORTHEAST AT 45 MPH THROUGH LAKE MARIAN...AND ACROSS THE FLORIDA TURNPIKE TO NEAR KENANSVILLE BETWEEN 305 AND 320 AM.

IF YOU ARE IN THE PATH OF THIS STORM...TAKE SHELTER IMMEDIATELY!!!  
TORNADOES HAVE ALREADY CLAIMED A HALF DOZEN LIVES IN CENTRAL FLORIDA THUS FAR.

IF YOU ARE IN THE PATH OF A TORNADO...ABANDON CARS AND MOBILE HOMES FOR A REINFORCED BUILDING OR GET INTO A DITCH OR CULVERT. THE SAFEST PLACE IS AN INTERIOR ROOM SUCH AS A CLOSET ON THE LOWEST FLOOR OF A STRONG BUILDING. AVOID WINDOWS.

CRISTALDI

---

ZCZC MIATORMLB ALL 230815  
TTAA00 KMLB DDHMM (230727)  
AMZ550-555-FLC009-230815-

BULLETIN - EAS ACTIVATION REQUESTED  
TORNADO WARNING  
NATIONAL WEATHER SERVICE MELBOURNE FL  
227 AM EST MON FEB 23 1998

THE NATIONAL WEATHER SERVICE IN MELBOURNE FL HAS ISSUED A  
TORNADO WARNING EFFECTIVE UNTIL 315 AM EST  
FOR PEOPLE IN THE FOLLOWING LOCATION...

IN EAST CENTRAL FLORIDA

...BREVARD COUNTY

AT 225 AM EST...WEATHER RADAR INDICATED A TORNADIC THUNDERSTORM NEAR MERRITT ISLAND OVER NORTH BREVARD COUNTY. THIS STORM WAS MOVING NORTHEAST AT 40 MPH AND WILL MOVE NEAR THE TOWN OF CAPE CANAVERAL BEFORE MOVING OFFSHORE.

CARS AND MOBILE HOMES CAN BE TOSSED ABOUT BY TORNADO WINDS. DO NOT TRY TO OUTFRONT A TORNADO IN YOUR VEHICLE. ABANDON VEHICLES AND MOBILE HOMES WHEN THREATENED BY A TORNADO AND GO TO A STRONG BUILDING. IF NO STRUCTURE IS NEARBY...SEEK SHELTER IN A DITCH OR LOW SPOT.

SHARP

---

ZCZC MIATORMLB ALL 230915  
TTAA00 KMLB DDHMM (230816)  
AMZ550-555-FLC009-230915-

BULLETIN - EAS ACTIVATION REQUESTED  
 TORNADO WARNING  
 NATIONAL WEATHER SERVICE MELBOURNE FL  
 316 AM EST MON FEB 23 1998

THE NATIONAL WEATHER SERVICE IN MELBOURNE FL HAS ISSUED A  
 TORNADO WARNING EFFECTIVE UNTIL 415 AM EST  
 FOR PEOPLE IN THE FOLLOWING LOCATION...

IN EAST CENTRAL FLORIDA

...BREVARD COUNTY

AT 315 AM EST...WEATHER RADAR INDICATED A TORNADIC THUNDERSTORM OVER CENTRAL OSCEOLA COUNTY ABOUT SEVEN MILES NORTHWEST OF KENANSVILLE MOVING EAST AT 45 MPH. THIS STORM AND OTHER STRONG TO SEVERE THUNDERSTORMS WILL AFFECT BREVARD COUNTY DURING THE NEXT HOUR. THE GREATEST THREAT FOR SEVERE WEATHER AND TORNADOES OVER BREVARD COUNTY WILL BE SOUTH OF CAPE CANAVERAL NEAR PATRICK AFB...ROCKLEDGE...AND MELBOURNE.

IF YOU ARE IN THE PATH OF A TORNADO...ABANDON CARS AND MOBILE HOMES FOR A REINFORCED BUILDING OR GET INTO A DITCH OR CULVERT. THE SAFEST PLACE IS AN INTERIOR ROOM SUCH AS A CLOSET ON THE LOWEST FLOOR OF A STRONG BUILDING. AVOID WINDOWS.

SHARP

## Chronology of products issued

Sunday, February 22, 1998

Time	Product	Affected Counties or Areas
5:25 AM	Hazardous Weather Outlook	All east central Florida counties
11:55 AM	Hazardous Weather Outlook	All east central Florida counties
8:33 PM	Short Term Forecast	All except Martin County
9:09 PM	Short Term Forecast	Lake, Volusia, Orange, Seminole
9:39 PM	Short Term Forecast	Lake
9:45 PM	Tornado Warning	Lake
9:58 PM	Severe Weather Statement	Lake
10:10 PM	Severe Weather Statement	Lake, Volusia
10:22 PM	Tornado Warning	Volusia
10:28 PM	Short Term Forecast	All east central Florida counties
10:33 PM	Urban/Small Stream Flood Advisory	Northern Lake, Volusia
10:40 PM	Hazardous Weather Outlook	All east central Florida counties
10:41 PM	Severe Weather Statement	Lake, Volusia
10:45 PM	Local Airport Advisory	Daytona Beach International Airport
10:49 PM	Special Marine Warning	Flagler Beach to Mosquito Lagoon
10:59 PM	Severe Weather Statement	Lake, Volusia
11:08 PM	Severe Weather Statement	Volusia
11:20 PM	Tornado Warning	Volusia

11:27 PM	Tornado Warning	Lake
11:37 PM	Tornado Warning	Western Orange
11:46 PM	Severe Weather Statement	Lake, Volusia, Seminole, Orange, Osceola
11:48 PM	Local Storm Report	Volusia
11:51 PM	Severe Weather Statement	Orange
11:56 PM	Tornado Warning	Seminole

## Monday, February 23, 1998

Time	Product	Affected Counties
12:05 AM	Short Term Forecast	All east central Florida counties
12:11 AM	Severe Weather Statement	Lake, Volusia, Seminole, Orange, Osceola
12:14 AM	Tornado Warning	Volusia
12:21 AM	Flood Warning	Volusia
12:22 AM	Tornado Warning	Osceola
12:29 AM	Local Airport Advisory	Orlando International/Executive Airports
12:37 AM	Severe Weather Statement	Lake, Volusia, Orange, Seminole, Osceola
12:40 AM	Flood Warning	Orange, Seminole
12:40 AM	Tornado Warning	Orange
12:53 AM	Severe Weather Statement	Lake, Volusia, Orange, Seminole, Osceola, Brevard
1:08 AM	Severe Weather Statement	Volusia, Orange, Seminole, Osceola, Brevard
1:17 AM	Short Term Forecast	All east central Florida counties
1:19 AM	Tornado Warning	Orange, Osceola
1:23 AM	Tornado Warning	Brevard
1:34 AM	Severe Weather Statement	Brevard
1:50 AM	Severe Weather Statement	Orange, Osceola, Brevard
2:01 AM	Urban/Small Stream Flood Advisory	North Brevard
2:25 AM	Severe Weather Statement	Orange, Osceola, Brevard
2:27 AM	Tornado Warning	Brevard
2:46 AM	Severe Weather Statement	Brevard
2:53 AM	Special Marine Warning	Flagler Beach to Melbourne Beach
3:00 AM	Short Term Forecast	All east central Florida counties
3:04 AM	Tornado Warning	Osceola
3:13 AM	Severe Weather Statement	Osceola, Brevard, Indian River
3:13 AM	Severe Weather Statement (cor.)	Osceola, Brevard, Indian River
3:16 AM	Tornado Warning	Brevard
3:34 AM	Urban/Small Stream Flood Advisory	Central and Southern Brevard
4:01 AM	Severe Weather Statement	Osceola, Brevard
4:18 AM	Short Term Forecast	All east central Florida counties
4:19 AM	Severe Weather Statement	Brevard
6:00 AM	Public Information Statement	All east central Florida counties
6:20 AM	Local Storm Report	All east central Florida counties

TTAA00 KMLB DDHHMM (230540)  
FLC095-117-230840-

BULLETIN - EAS ACTIVATION REQUESTED  
FLOOD WARNING  
NATIONAL WEATHER SERVICE MELBOURNE FL  
1240 AM EST MON FEB 23 1998

THE NATIONAL WEATHER SERVICE IN MELBOURNE FL HAS ISSUED A  
FLOOD WARNING EFFECTIVE UNTIL 340 AM EST  
FOR PEOPLE IN THE FOLLOWING LOCATION...

IN EAST CENTRAL FLORIDA

...SEMINOLE COUNTY  
...ORANGE COUNTY

AT 1235 AM ...THUNDERSTORMS WITH VERY HEAVY RAINFALL WILL MOVE  
NORTHEAST ACROSS METRO ORLANDO. THIS COMBINED WITH RAINFALL  
FROM PREVIOUS STORMS IN THE PAST FEW HOURS WILL AGGRAVATE  
ONGOING FLOODING FROM THE PAST WEEK AND CAUSE ADDITIONAL  
AREAS TO EXPERIENCE FLOODING.

BE ESPECIALLY CAUTIOUS AT NIGHT WHEN IT IS HARDER TO RECOGNIZE THE  
DANGERS OF FLOODING. DO NOT DRIVE YOUR VEHICLE INTO AREAS WHERE  
WATER COVERS THE ROADWAY. THE WATER DEPTH MAY BE TOO GREAT TO  
ALLOW YOUR CAR TO CROSS SAFELY. VEHICLES CAUGHT IN RISING WATER  
SHOULD BE ABANDONED QUICKLY. MOVE TO HIGHER GROUND.

---

ZCZC MIASMWMLB  
TTAA00 KMLB 230350  
AMZ550-230550-

BULLETIN - IMMEDIATE BROADCAST REQUESTED  
SPECIAL MARINE WARNING  
NATIONAL WEATHER SERVICE MELBOURNE FL  
1049 PM EST SUN FEB 22 1998

THE NATIONAL WEATHER SERVICE IN MELBOURNE FL HAS ISSUED A  
SPECIAL MARINE WARNING EFFECTIVE UNTIL 1250 AM EST  
FOR THE INTRACOASTAL WATERS, BARRIER ISLANDS AND NEARSHORE ATLANTIC FROM...

...FLAGLER BEACH TO MOSQUITO LAGOON

AT 1048 PM...DOPPLER RADAR SHOWED SEVERE THUNDERSTORMS APPROACHING THE VOLUSIA  
COUNTY COAST FROM PORT ORANGE TO FLAGLER BEACH. THESE STORMS WILL LIKELY PRODUCE  
STRONG DAMAGING GUSTS...HAIL...NEAR CONTINUOUS LIGHTNING AND POSSIBLE TORNADIC  
WATERSPOUTS OVER THE INTRACOASTAL AND NEARSHORE ATLANTIC WATERS NORTH OF  
MOSQUITO LAGOON.

AS THESE THUNDERSTORMS CROSS THE INTRACOASTAL WATERS, BARRIER  
ISLANDS AND INTO THE ATLANTIC...THEY WILL PRODUCE STRONG GUSTY  
WINDS, ROUGH SEAS, HEAVY DOWNPOURS AND DANGEROUS LIGHTNING. TRY  
TO AVOID THESE STORMS IF POSSIBLE. IF YOU GET CAUGHT OFFSHORE...  
MAKE SURE ALL SAFETY GEAR IS AVAILABLE AND THAT LIFE JACKETS ARE  
BEING WORN BY YOU AND YOUR CREW.

A WATERSPOUT IS A TORNADO OVER WATER THAT CAN BE DANGEROUS AND EVEN DEADLY. SMALL CRAFT CAN BE SWAMPED OR OVERTURNED BY A WATERSPOUT. STAY AWAY FROM THEM AT ALL TIMES.

CRISTALDI

---

ZCZC MIAFFSMLB ALL 230540  
TTAA00 KMLB DDHHMM (230333)  
FLZ041-044-230540-

BULLETIN - IMMEDIATE BROADCAST REQUESTED  
URBAN AND SMALL STREAM FLOOD ADVISORY  
NATIONAL WEATHER SERVICE MELBOURNE FL  
1033 PM EST SUN FEB 22 1998

...URBAN AND SMALL STREAM FLOOD ADVISORY FOR NORTHERN LAKE AND  
VOLUSIA COUNTIES UNTIL MIDNIGHT...

AT 1030 PM...RADAR SHOWED SEVERE THUNDERSTORMS LIKELY PRODUCING HAIL AND TORRENTIAL  
RAINFALL AMOUNTS OF TWO INCHES IN ABOUT AN HOUR OVER NORTH LAKE COUNTY...ABOUT TO CROSS  
THE ST JOHNS RIVER INTO VOLUSIA COUNTY FROM NEAR DELEON SPRINGS TO PIERSON. THE MAIN AREA  
OF CONCERN IS ALONG AND NORTH OF STATE ROUTE 44 IN BOTH COUNTIES.

THIS AMOUNT OF RAINFALL WILL LIKELY CAUSE FLOODING OF ROADS AND  
OTHER POOR DRAINAGE AREAS. IN ADDITION...STANDING WATER PROBLEMS  
ALONG THE ST JOHNS RIVER WILL LIKELY BE AGGRAVATED.

BE ESPECIALLY CAUTIOUS AT NIGHT WHEN IT IS HARDER TO RECOGNIZE THE  
DANGERS OF FLOODING. DO NOT DRIVE YOUR VEHICLE INTO AREAS WHERE  
WATER COVERS THE ROADWAY. THE WATER DEPTH MAY BE TOO GREAT TO ALLOW YOUR CAR TO  
CROSS SAFELY. VEHICLES CAUGHT IN RISING WATER SHOULD BE ABANDONED QUICKLY.

DO NOT ATTEMPT TO CROSS LOW SPOTS IF WATER COVERS THE ROADWAY. NEVER TRY TO CROSS  
A FLOWING STREAM...EVEN A SMALL ONE...ON FOOT.

CRISTALDI

---

ZCZC MIATAPMLB ALL  
TTAA00 KMLB DDHHMM (230529)

LOCAL AIRPORT ADVISORY  
NATIONAL WEATHER SERVICE MELBOURNE FL  
1229 AM EST MON FEB 23 1998

A LOCAL AIRPORT ADVISORY IS IN EFFECT FOR ORLANDO INTERNATIONAL AND  
EXECUTIVE AIRPORTS FOR THUNDERSTORMS EXPECTED TO PRODUCE WIND  
GUSTS OF 35 KNOTS OR GREATER AND HAIL 1/2 INCH IN DIAMETER OR  
LARGER UNTIL 23/230 AM.

LASCODY

---

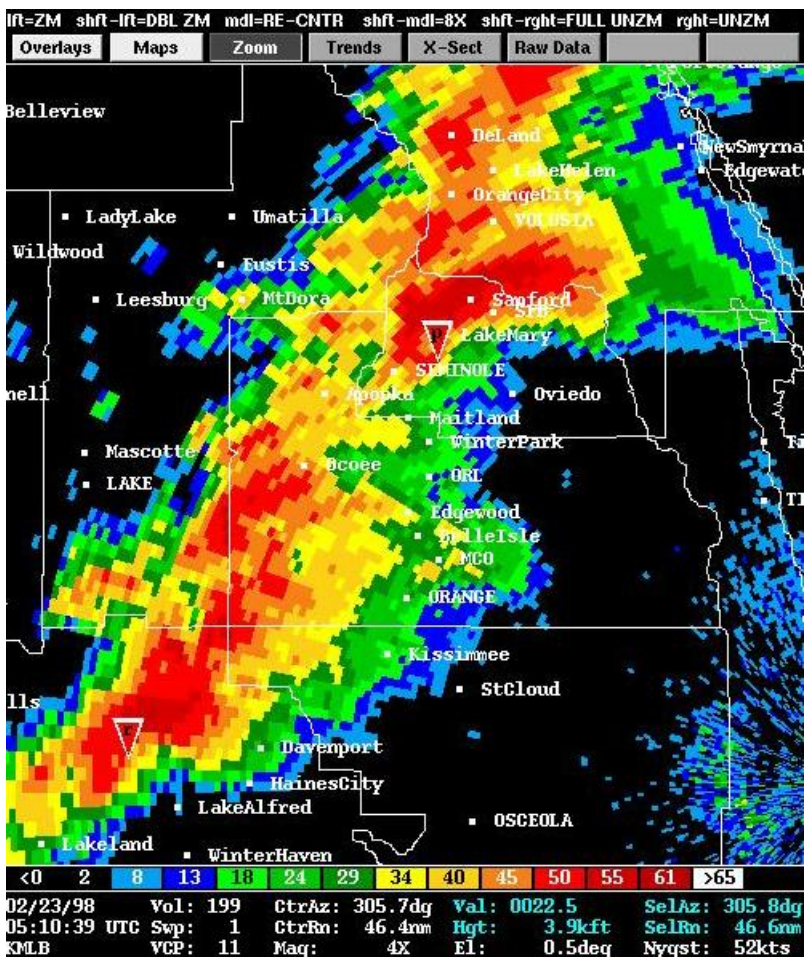
ZCZC MIATAPMLB ALL

LOCAL AIRPORT ADVISORY  
NATIONAL WEATHER SERVICE MELBOURNE FL  
1045 PM EST SUN FEB 22 1998

A LOCAL AIRPORT ADVISORY IS IN EFFECT FOR DAYTONA BEACH INTERNATIONAL AIRPORT FOR THUNDERSTORMS EXPECTED TO PRODUCE WIND GUSTS OF 35 KNOTS OR GREATER...HAIL OF 1/2 INCH IN DIAMETER OR LARGER...AND EXCESSIVE LIGHTNING UNTIL 1130 PM.

STORM PRODUCING LARGE AMOUNT OF LIGHTNING AND POSSIBLE TORNADIC CIRCULATION WILL PASS NEAR DAB AIRPORT BETWEEN 11PM AND 1130PM.

CRISTALDI



0.5 degree base reflectivity image from the NWS Melbourne doppler radar, displayed using RADS software (developed by the National Severe Storms Laboratory, NSSL). This image shows "Tornadic Vortex Signatures" or TVS, (red inverted triangles) indicating tornadic circulations within the storms approaching both Kissimmee (lower left) and Sanford (upper center).