



**Fisheries
& Habitat
Conservation**

Key Partners:

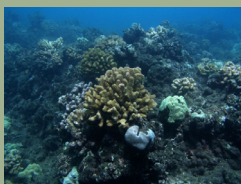
- Hawaii Department of Land and Natural Resources
- University of Hawaii
- Kamehameha Schools
- Oloino/Maui Restoration Group
- Hawaiian Silversword Foundation
- Tropical Reforestation and Ecosystems Education Center
- Department of Hawaiian Homelands
- Hawaii Chapter of the Wildlife Society
- Offshore Islet Restoration Committee
- National Tropical Botanical Garden
- Community Work Day
- Molokai-Lanai Soil and Water Conservation District
- County of Maui
- Molokai Ranch Ltd.
- Kawela Plantation Homeowners Association
- The Nature Conservancy
- Waipa Foundation
- Lanai Institute for the Environment
- U.S. Geological Survey
- Department of Defense
- National Oceanic and Atmospheric Administration



Seabirds like this red-footed booby will benefit from invasive species removal and native habitat restoration efforts on Lehua Island.



Volunteers on Maui work to restore native dryland forest.



Service efforts protect coral reefs and evaluate negative impacts.

U.S. Fish & Wildlife Service

Fisheries and Habitat Conservation

**Protecting and Restoring Native Habitats in
Hawaii — 2005**

PARTNERS FOR FISH AND WILDLIFE: ALMOST \$1 MILLION TO 19 LANDOWNERS FOR NATIVE FOREST RESTORATION

- The Kanakaleonui Forest Restoration project (Hawaii Island) will protect and restore approximately 525 acres of native mamane forest near Hakalau Forest NWR, benefiting the endangered palila and other native species.
- The Papaloa Forest Restoration project (Hawaii) will construct a 10-acre ungulate-proof fence to restore native Hawaiian forest habitat at Kealakekua Ranch.
- The Helemano Watershed Management project (Oahu) will create a 200-acre ungulate free area in the Ko’olau Mountains to benefit rare plants and tree snails.
- A coordinator to plan and implement volunteer work trips for dryland forest habitat restoration efforts within the Leeward Haleakala Watershed Restoration Partnership area (Maui).

COASTAL PROGRAMS PROVIDE \$138,000 TO PROTECT AND RESTORE RARE COASTAL HABITATS

- Maui Coastal Dune and Wetland Restoration Fencing project will protect and restore 39 acres of native coastal ecosystems at Kanaha Beach, Maui.
- Hawaii Offshore Islet Biological Surveys will provide important information for planning and prioritizing habitat restoration for the State’s 47 offshore islets.
- The Lehua Island Restoration Planning and Implementation project will carry out restoration planning and implementation on the 275-acre island (20 miles west of Kauai) to benefit seabirds, native plants and insects – many of which are either rare or listed species.

ENVIRONMENTAL REVIEW — MOLOKAI TASK FORCE WILL BENEFIT LISTED PLANTS AND CORAL REEFS; ARMY COORDINATION PROTECTS STREAM HABITAT

- The community-based Fire Task Force addresses wildland fire issues through education, prevention, and control. Work will focus on monitoring stream erosion and improving and maintaining existing access and fire breaks, resulting in the reduction of sediments affecting coral reefs and promoting the recovery of listed plants. (Molokai).
- Drum Road Fish and Wildlife Coordination – worked with U.S. Army Corps of Engineers to eliminate barriers to fish passage over 27 miles of habitat in 6 perennial streams for 4 native migratory species and to minimize impacts from the development of enhanced U.S. Army training capability associated with Stryker Brigade military transformation. (Oahu)

ENVIRONMENTAL CONTAMINANTS: EXPERTS EVALUATE IMPACTS OF VESSEL GROUNDING TO OVER 30 ACRES OF CORAL REEF ON OAHU

- Provided assistance to the State in an emergency response to the grounding of the “Cape Flattery” near Barbers Point by conducting scientific evaluations of impacts to coral reef resources and habitat.

CONTACT US!

U.S. Fish and Wildlife Service
Pacific Islands Fish and Wildlife Office
300 Ala Moana Blvd., Room 3-122
Honolulu, HI 96850
808.792.9400
<http://www.fws.gov/pacificislands>