



Northern Valley Indian Health



Northern Valley Indian Health Service Area



 NORTHERN VALLEY
INDIAN HEALTH
INCORPORATED
DENTAL CLINIC





PERFORMANCE COMPARISON

DATE	TIME	PERCENTAGE	SCORE
10/10/10	10:10	100%	100
10/11/10	10:11	100%	100
10/12/10	10:12	100%	100
10/13/10	10:13	100%	100
10/14/10	10:14	100%	100
10/15/10	10:15	100%	100
10/16/10	10:16	100%	100
10/17/10	10:17	100%	100
10/18/10	10:18	100%	100
10/19/10	10:19	100%	100
10/20/10	10:20	100%	100
10/21/10	10:21	100%	100
10/22/10	10:22	100%	100
10/23/10	10:23	100%	100
10/24/10	10:24	100%	100
10/25/10	10:25	100%	100
10/26/10	10:26	100%	100
10/27/10	10:27	100%	100
10/28/10	10:28	100%	100
10/29/10	10:29	100%	100
10/30/10	10:30	100%	100



DAY





**NORTHERN VALLEY
INDIAN HEALTH**
— INCORPORATED —
845 WEST EAST AVENUE





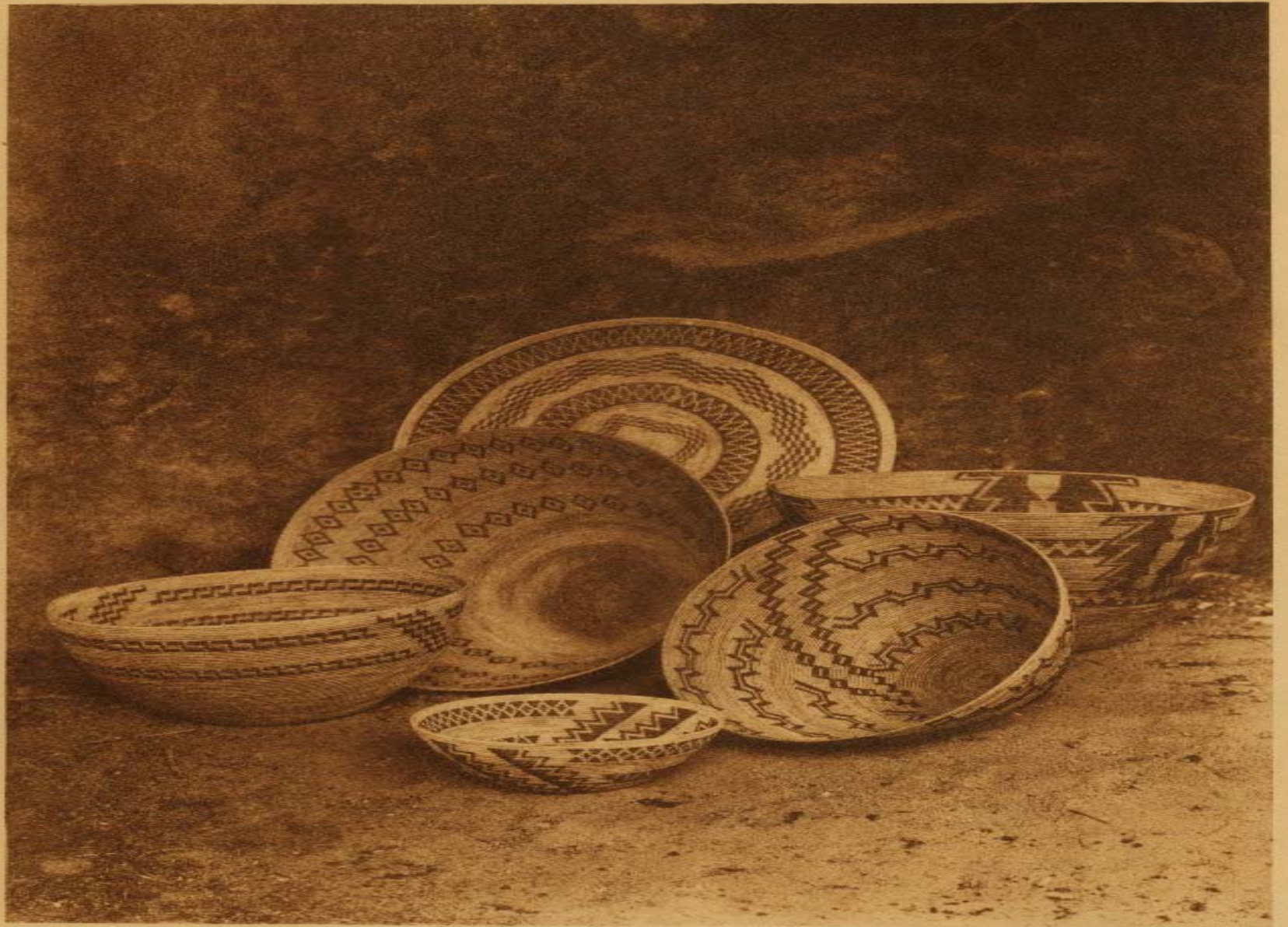


Northern Valley
Indian Health, Inc.
100 West 10th Street

NOV 15 2011

NOV 15 2011



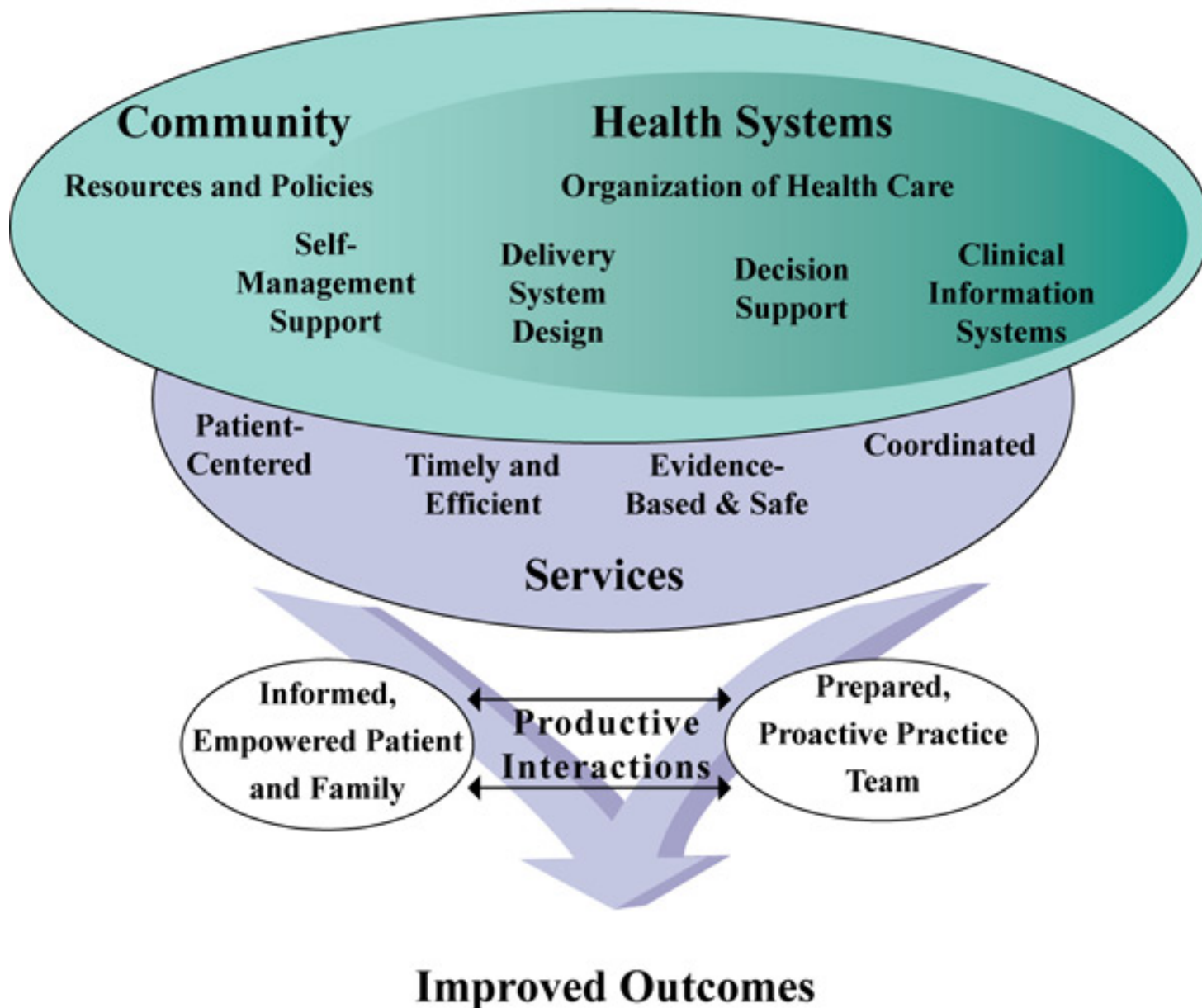


From Copyright Photograph 1906 by O. P. Curtis

BASKETS IN THE PAINTED CAVE—YOKUTS.



The Care Model



The Chronic Care Model Focus On:



- Members of the Community
- Empowering patients and their families
- Coordinating services



One of the Elements
of the
Chronic Care
Model is the
Community



Roles of Community Health

Community Health Services

Emphasis is placed on creating partnerships with the community in promoting health and preventing disease.











Tangeloes
2 for \$1

WELLPICT BERRIES
Naturipe
GARDEN FRESH PEAS

CAT 1



Live a colorful life
Eat fruits & vegetables every day



Harvest of the Month
Growing Healthy Students

- GREEN**
Broccoli, avocado, green apples, green peas, kiwifruit, artichoke
Strong legs and teeth
Good vision
- DARK ORANGE**
Sweet potatoes, cantaloupe, carrots, sweet corn, butternut squash
Good immune system
Good vision
Healthy heart
- YELLOW/ORANGE**
Oranges, grapefruit, yellow sweet corn, yellow peaches
Strong immune system
Healthy skin
Good vision
- RED**
Red apples, tomatoes, watermelon, strawberries, beets, red onions
Healthy heart
Memory function
- BLUE/PURPLE**
Purple grapes, raisins, plums, blueberries, eggplant
Good immune system
Healthy heart
- WHITE/TAN/BROWN**
Cauliflower, onions, garlic, brown pears, bananas, white potatoes
Healthy heart
Strong immune system

Office DEPOT
Willows Medical
May 1, 2008 - Jun 30, 2008



Woman in green patterned shirt cutting broccoli.

Woman in beige shirt and glasses cutting vegetables.

Red bowl containing chopped broccoli.

Yellow bowl containing vegetables.

Bottle of Diet Pepsi.

Large clear plastic container filled with chopped green vegetables.

Bag of red bell peppers.

Bag of cucumbers.

Large bag of fresh broccoli.

Box of Ziploc bags.

Stainless steel bowl containing sliced cucumbers.





Behavioral Health

Helping People to Walk This Life
in a Good Way







The Path
Often
Requires a
Guide



















Medical Services



We believe in
strengthening families and
promoting wellness through:



High quality healthcare,
Trusted and respectful providers,
Efficient delivery of services.



Medical Services Focus

- We are committed to fostering satisfied, healing, and healthy patients.





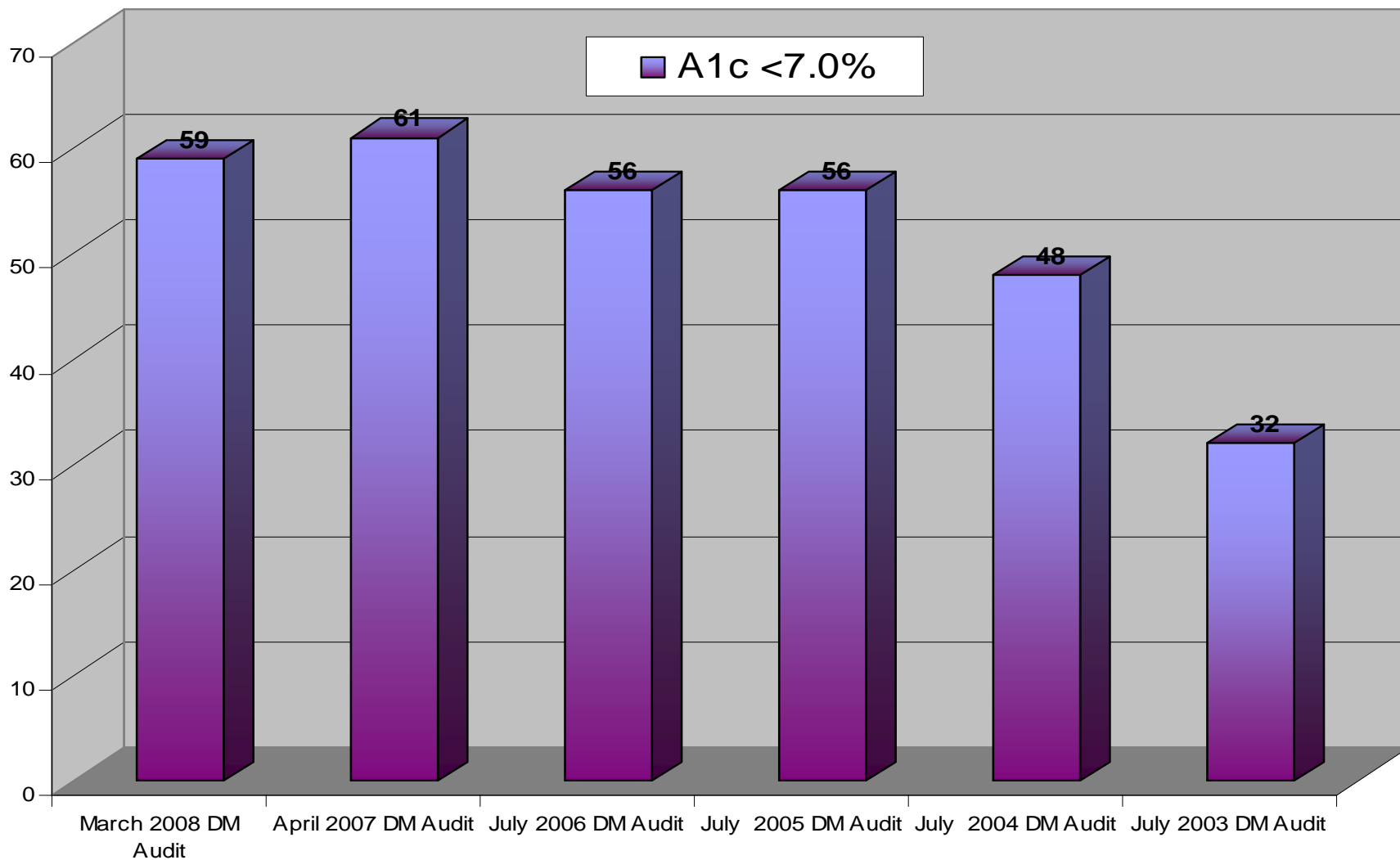


Diabetic Services

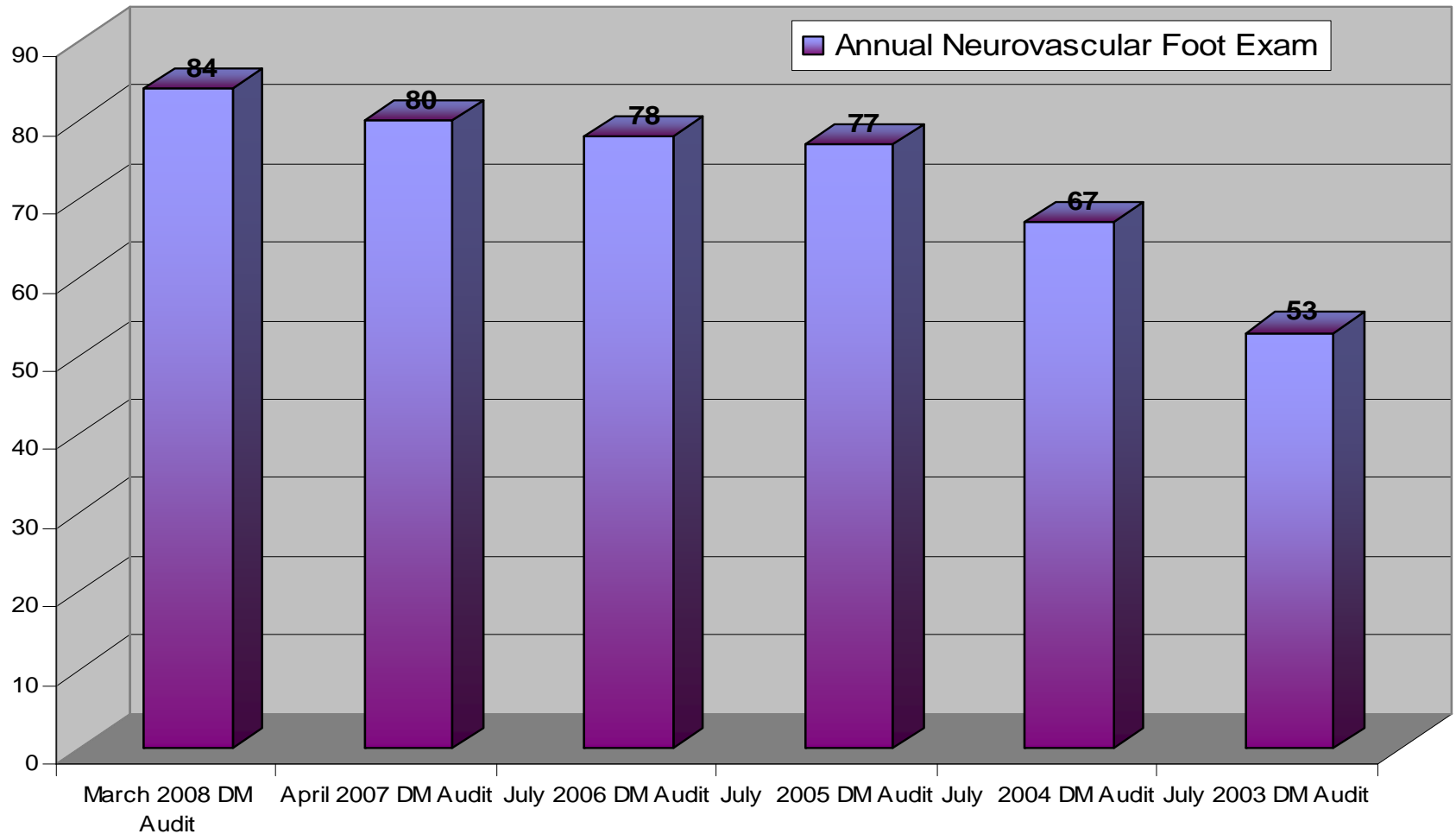
- NVIH has two Certified Diabetic Educators



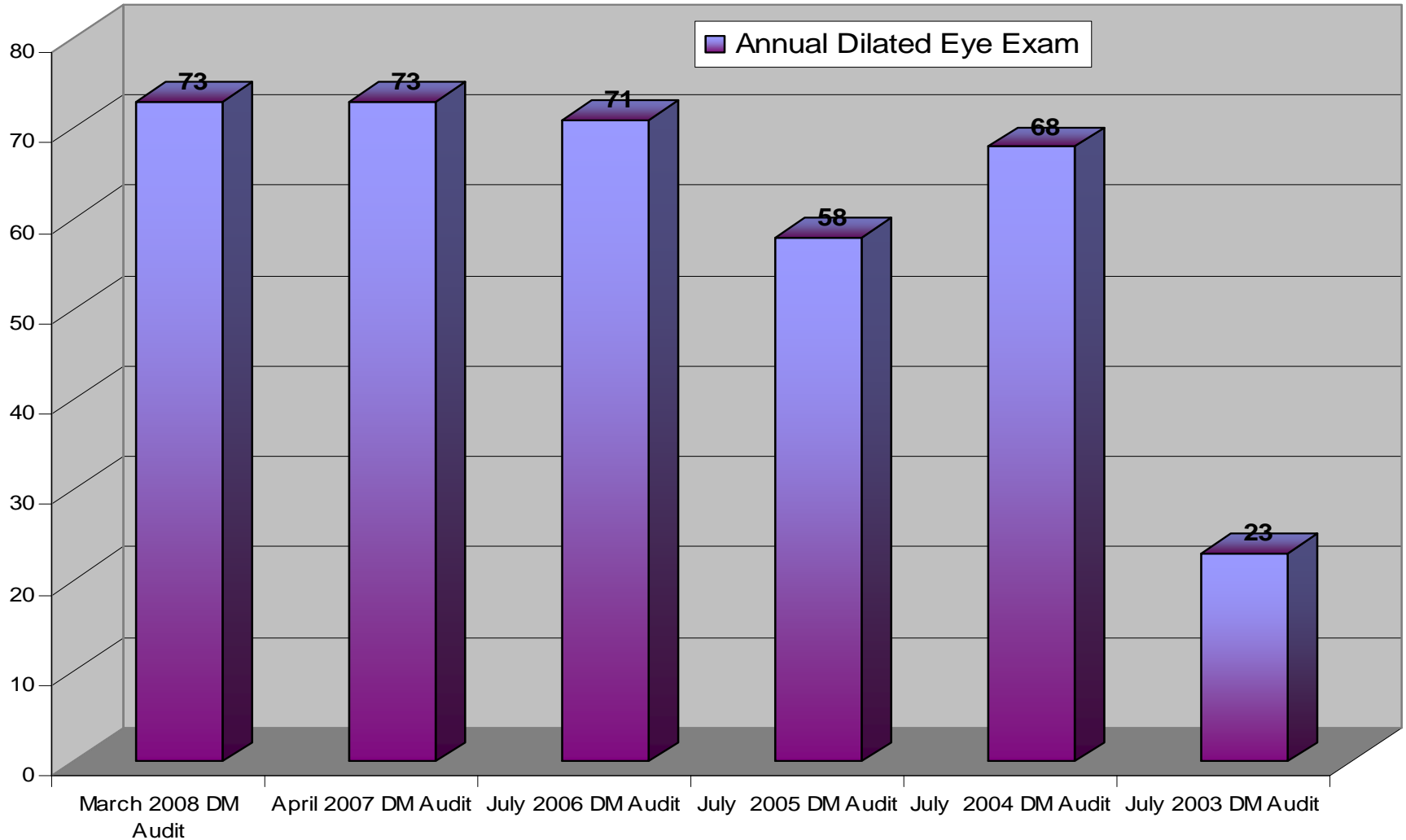
Percentage of AI/AN People with Diabetes at Ideal Blood Sugar Control



Percentage of AI/AN People with Annual Complete Foot Exam



Percentage of AI/AN People with Annual Retinopathy Screening



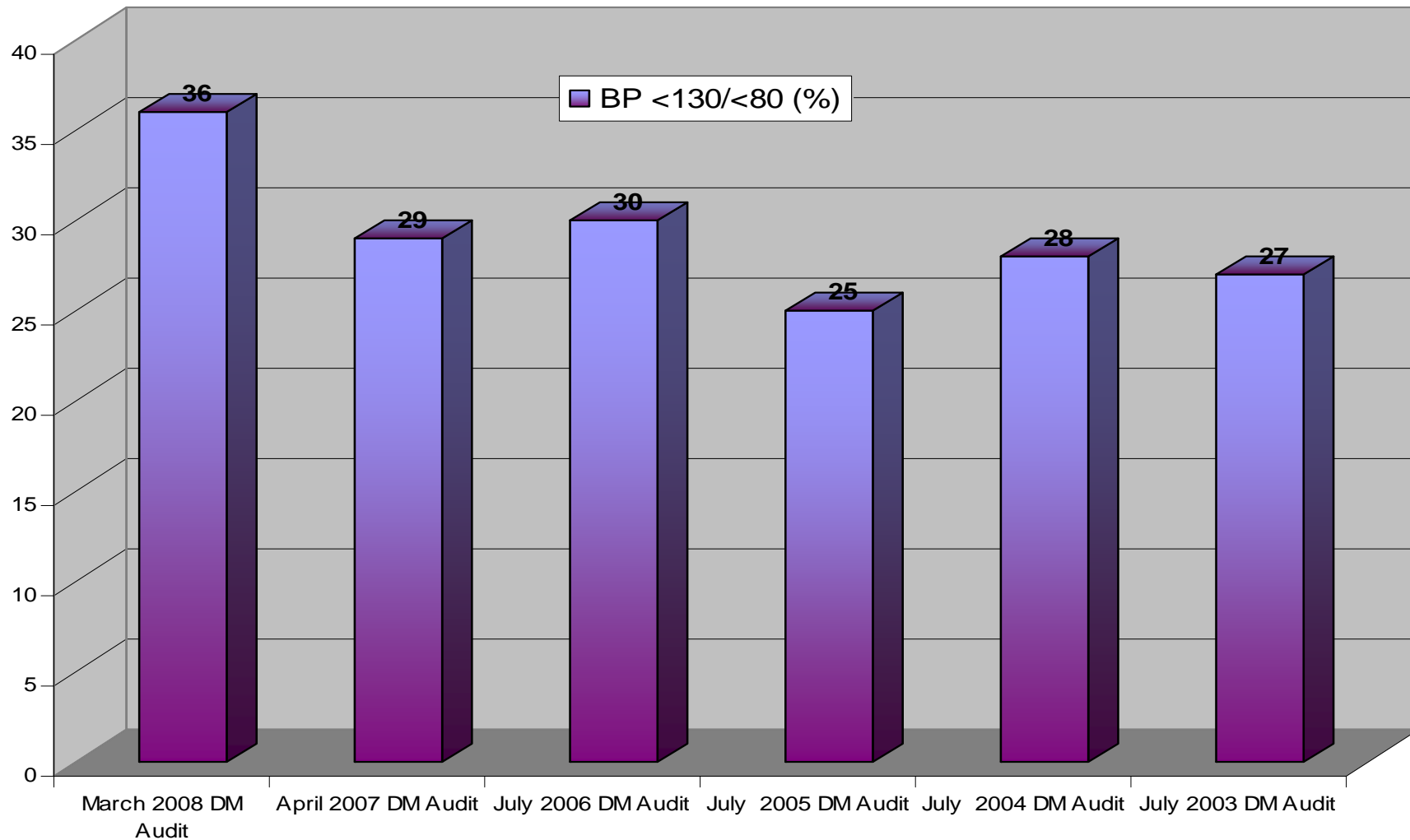


Integrating Services

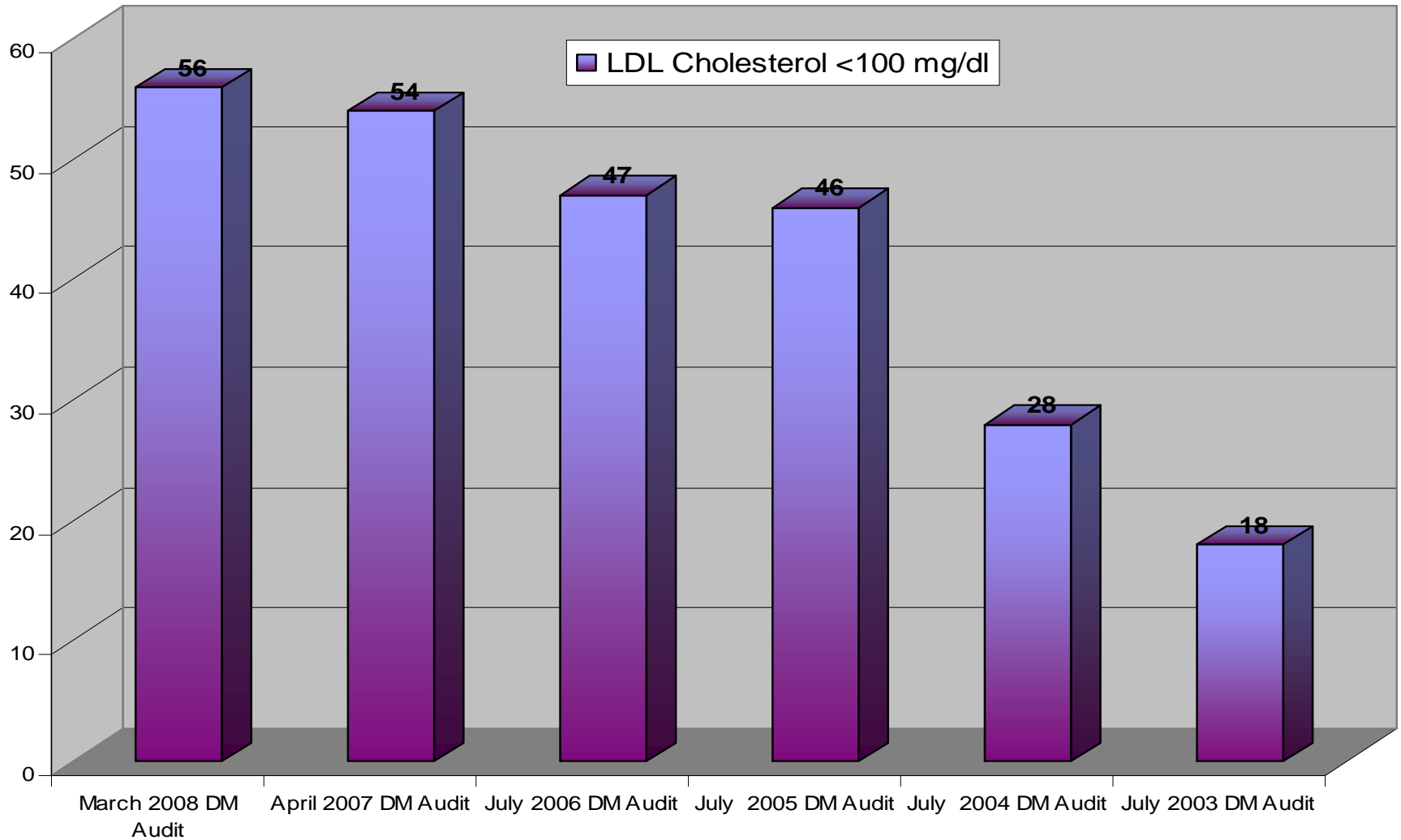




Percentage of AI/AN People with Diabetes at Ideal Blood Pressure Control

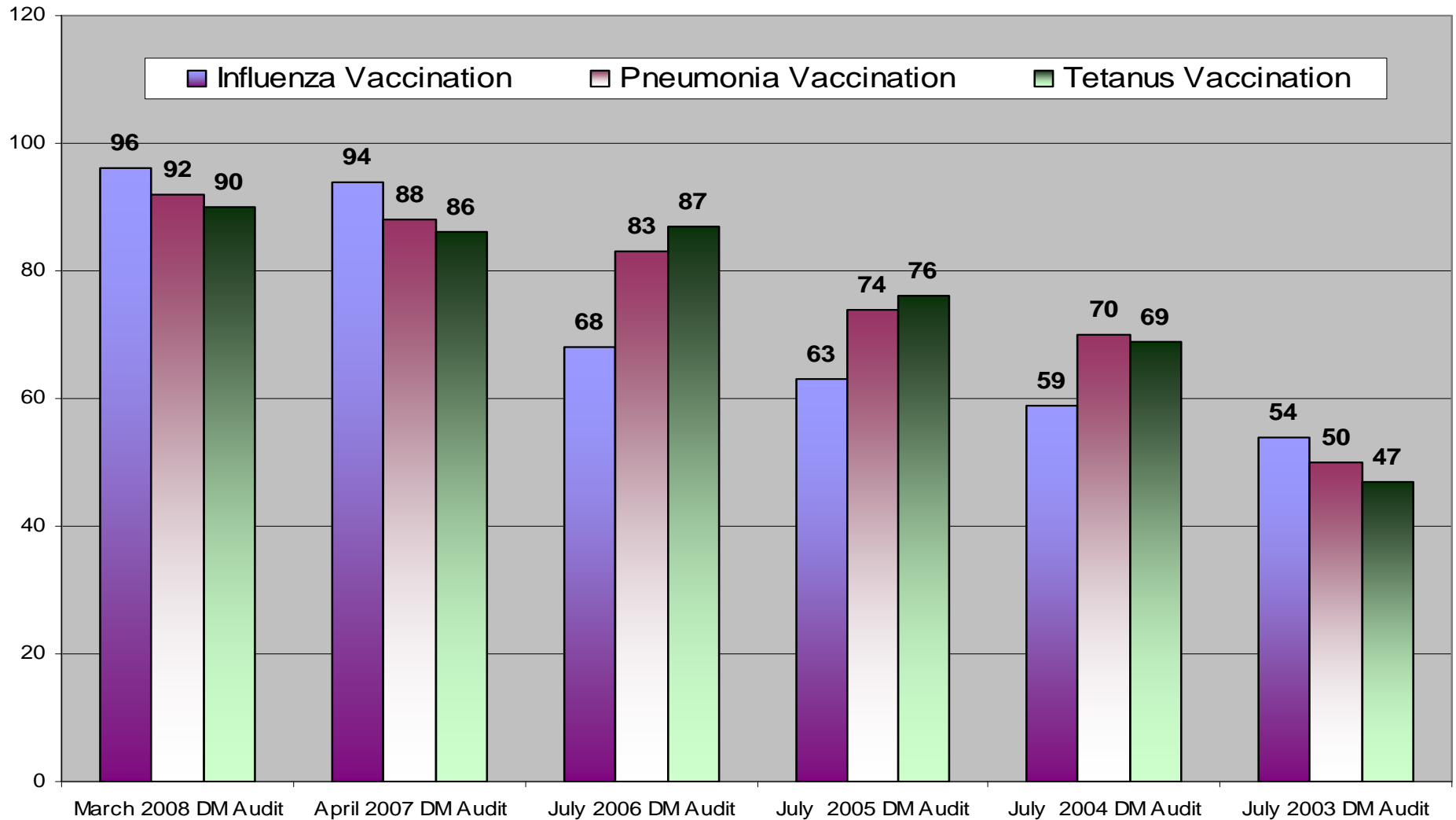


Percentage of AI/AN People with Diabetes at Ideal Lipid Control





Percentage of AI/AN People with Diabetes Current on Immunizations



A whiteboard on a stand, displaying text that is mostly illegible due to the distance and angle. It appears to be a list or a set of instructions.

North
Walking
in a
Good
Way





OSHA REVIEW

OSHA REVIEW

Woman in white patterned shirt holding a tray of strawberries.

Various framed notices and certificates on the wall.

Office phone on the wall.



FIRE EXTINGUISHER

Woman in blue shirt and black overalls gesturing towards the fruit.



Price tag for peaches: \$1.12

Price tag for plums: \$1.00

Dental Services



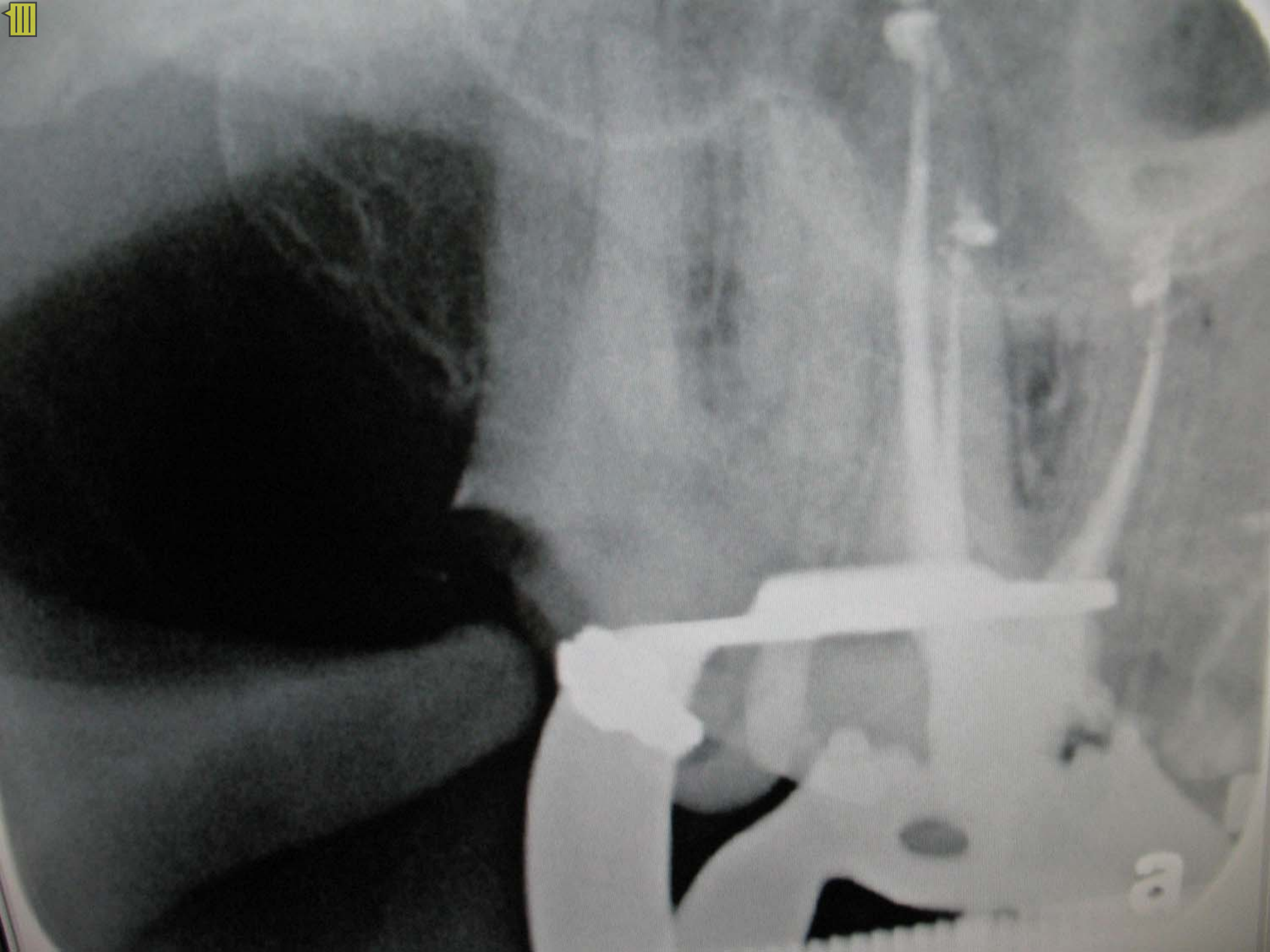
- THOMAS
- WILLIAM H
- CHUCK C
- CANDY CRO
- JERRY P
- BRENDA M
- LORELL

Thank You For
Your Support
of the
Dental Services
of the
University of
Tennessee
Health Sciences Center
at Knoxville









22



VELscope



 ON

LASING 

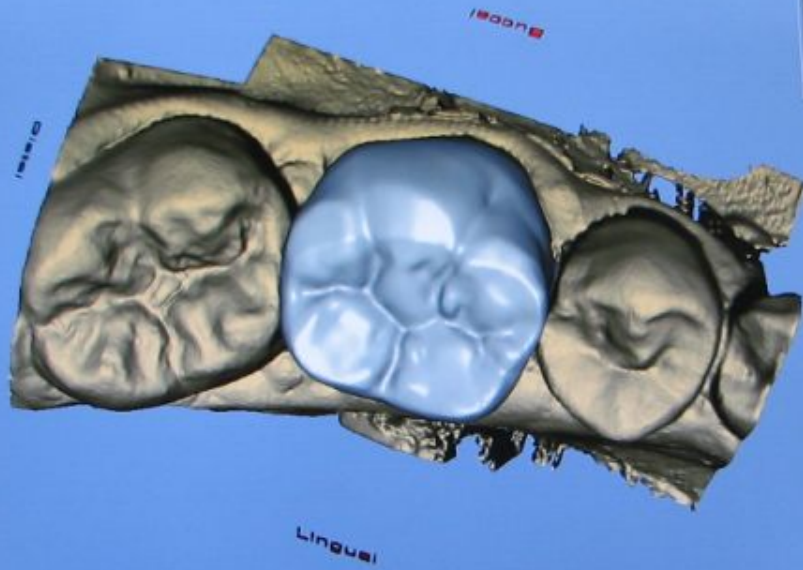
PRE-SET PROCEDURES  HOME

	Laser Troughing 1.2Watts - CW with carbon tip.		Frenectomy 1.2Watts - CW with carbon tip.
	Class V 1.2Watts - CW with carbon tip.		Biopsies 1.2Watts - CW with carbon tip.
	Implant Recovery 1.6Watts - CW with carbon tip.		Aphthous-ulcers 1.8Watts - Pulse without carbon tip.
	Gingivectomy 1.2Watts - CW with carbon tip.		Laser Curettage 0.4Watts - CW with carbon tip.

www.zaplasers.com

Sirona

CEBEC - Jennifer (Yankov) - Youth 19 - Crown - Dental database



Restoration - Form - Blend
Start [Taskbar icons] CEBEC - Jennifer (Tan...

Thickness: Height of base: 2.68 mm Height:





Cerec Porcelain Crowns

- Before



- After



In Summary

- We are committed to addressing the needs of the communities we serve with cultural sensitivity.
- We strive to create comprehensive, integrated programs.
- We are dedicated to a full circle of services that support families and individuals with their wellness goals.





Our Services ([view all](#))



News & Events

Calendar Events ([view all](#))

- 2008-03-03 ~ Adult Depression Support Group (C)
- 2008-03-05 ~ Exercise Class (W)
- 2008-03-07 ~ Talking Circle (C)
- 2008-03-10 ~ Adult Depression Support Group (C)
- 2008-03-11 ~ Talking Circle (W)

Job Openings

- [Registered Dental Assistant / Dental Assistant](#)
- [Registered Dental Assistant / Dental Assistant](#)
- [Nursing Director](#)
- [Patient Accounts Technician](#)
- [Clinic Operations Manager](#)

Recipe of the Month - March 2008

- [Tasty Tortilla Soup](#)

About Northern Valley Indian Health, Inc.

NVIH is a private, nonprofit tribal corporation that was founded in 1971 by a group of Northern California American Indians seeking to reestablish [health services](#) for Indians in California. NVIH continues to focus agency efforts on establishing and maintaining an effective and efficient health care system, which ensures services are accessible, available, and of high quality.

A Board of Directors from the Northern California Tribes of Grindstone Indian Rancheria (Glenn County), Mechoopda