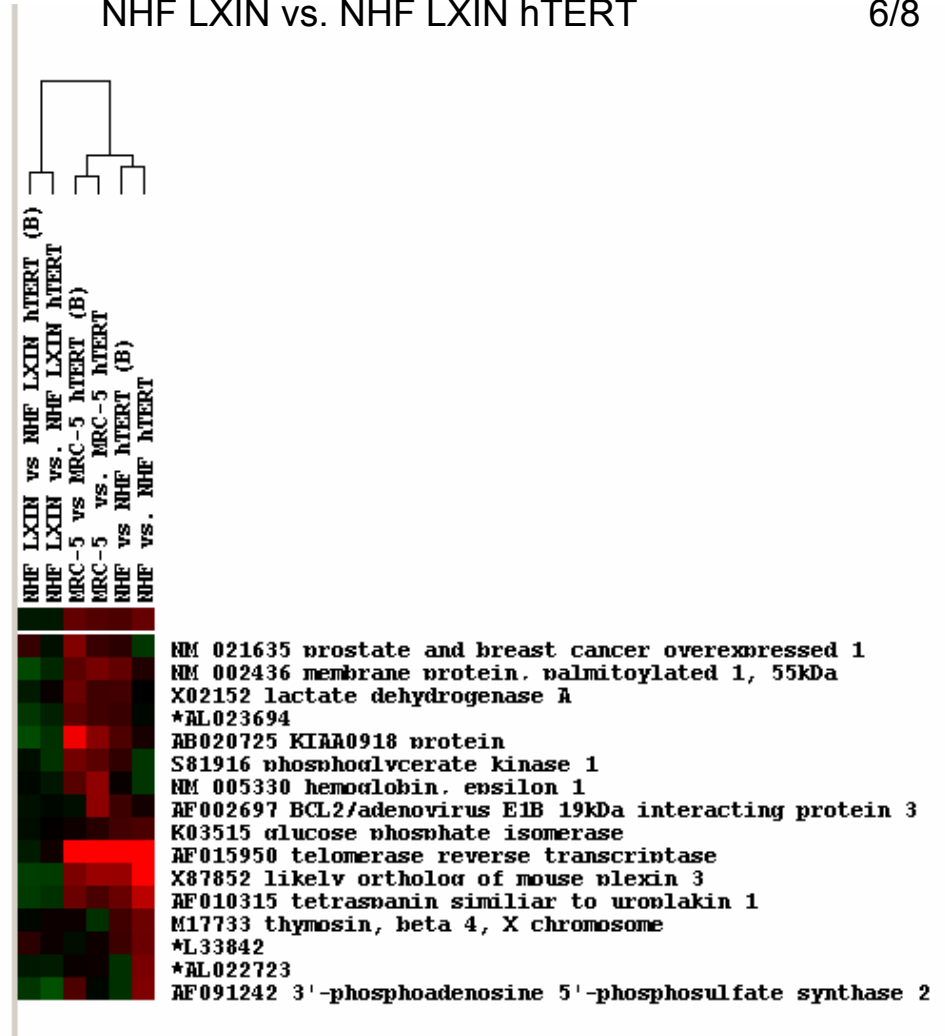
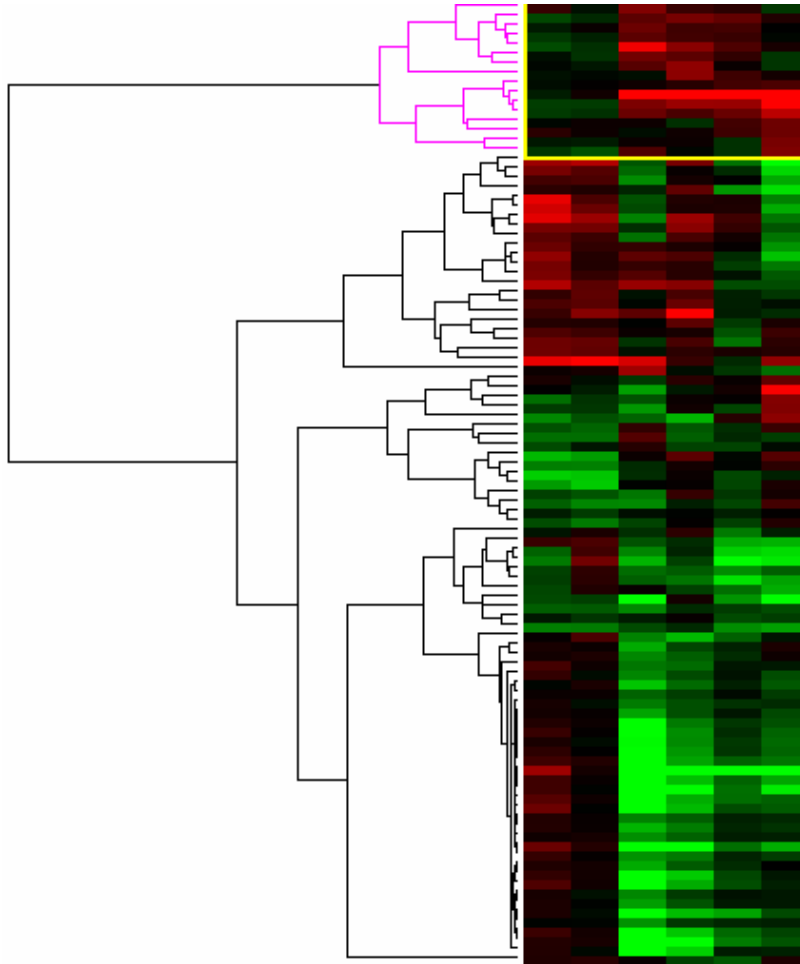
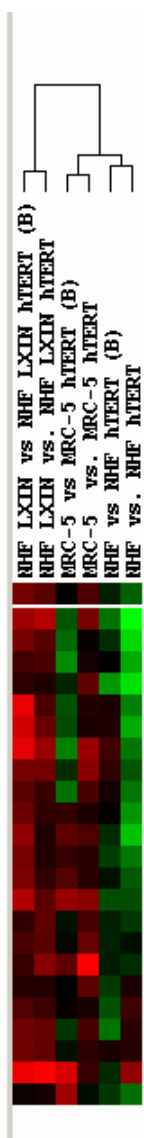
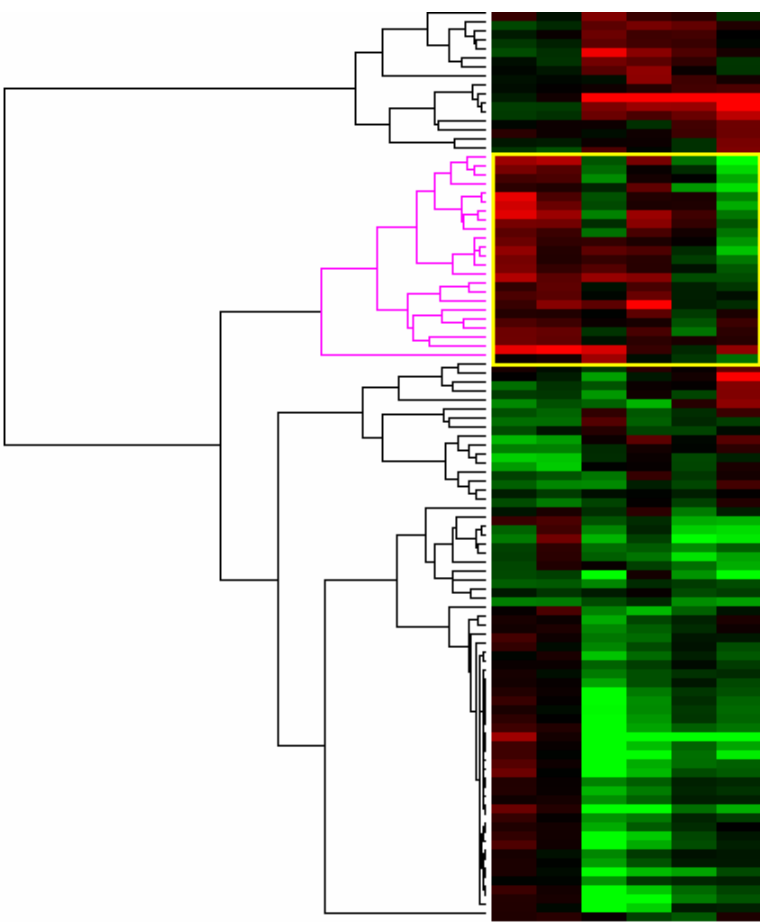


Genes found by MAPS Combined Queries at 95%

Experiment Name: _____ Query: _____

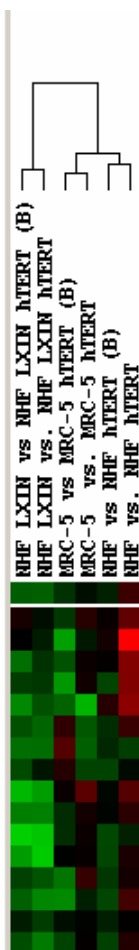
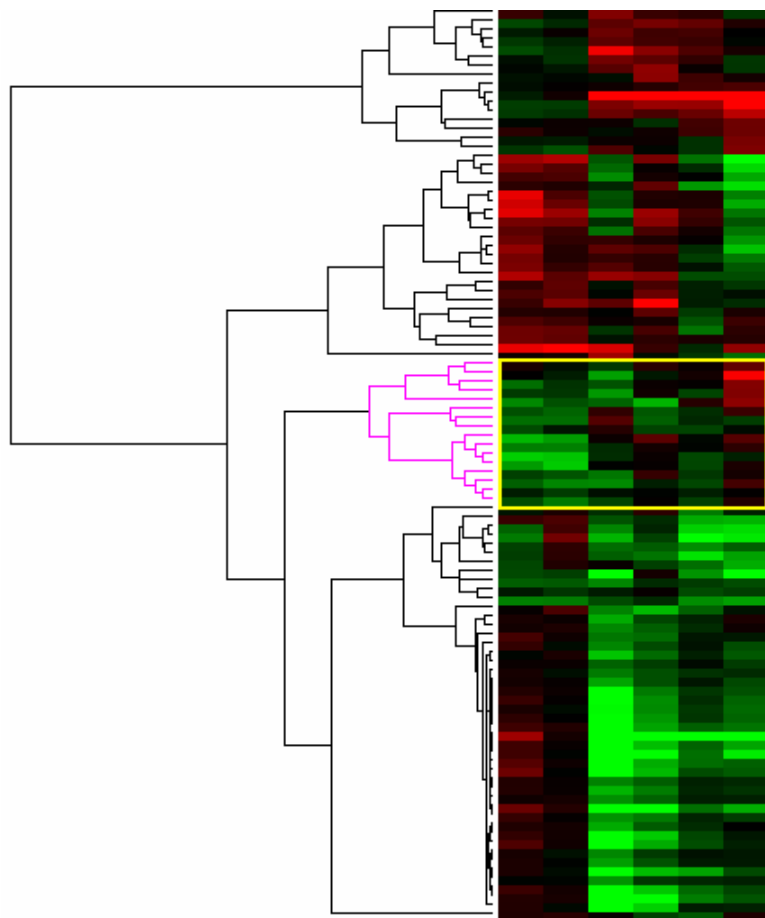
MRC-5 vs. MRC-5 hTERT 6/8
 NHF vs. NHF hTERT 4/6
 NHF LXIN vs. NHF LXIN hTERT 6/8





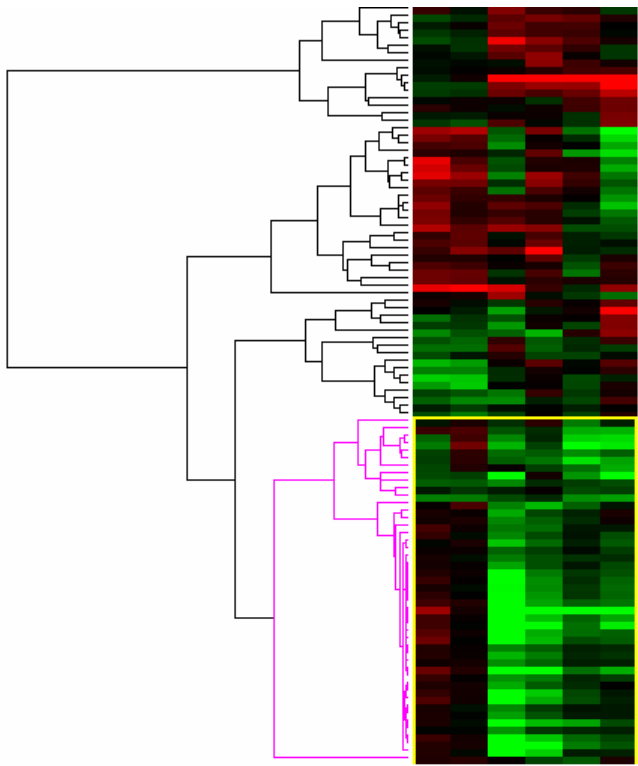
NHE LXIN vs NHE LXIN hTERT (B)
 NHE LXIN vs. NHE LXIN hTERT
 MRC-5 vs MRC-5 hTERT (B)
 MRC-5 vs. MRC-5 hTERT
 NHE vs NHE hTERT (B)
 NHE vs. NHE hTERT

- *U04636
- U28049 T-box 2
- L20859 solute carrier family 20 (phosphate transporter), member 1
- X05232 matrix metalloproteinase 3 (stromelysin 1, progelatinase)
- *X60484
- *X60483
- M13509 matrix metalloproteinase 1 (interstitial collagenase)
- AL080235 Ras-induced senescence 1
- *L17131
- U05340 CDC20 cell division cycle 20 homolog (S. cerevisiae)
- X54942 CDC28 protein kinase regulatory subunit 2
- M37583 H2A histone family, member Z
- NM 006342 transforming, acidic coiled-coil containing protein 3
- AF056087 secreted frizzled-related protein 1
- *X65607
- *J03910
- U61849 neuronal pentraxin I
- M34057 latent transforming growth factor beta binding protein 1
- Y10183 activated leukocyte cell adhesion molecule
- X15414 aldo-keto reductase family 1, member B1 (aldose reductase)
- NM 024947 polihomoeotic like 3 (Drosophila)
- D29992 tissue factor pathway inhibitor 2
- M77349 transforming growth factor, beta-induced, 68kDa



NHE LXIN vs NHE LXIN hTERT (B)
 NHE LXIN vs. NHE LXIN hTERT
 MRC-5 vs MRC-5 hTERT (B)
 MRC-5 vs. MRC-5 hTERT
 NHE vs NHE hTERT (B)
 NHE vs. NHE hTERT

*AL109827
 *AL022068
 *M81780
 M25384 pregnancy specific beta-1-glycoprotein 5
 AL137540 netrin 4
 *U33931
 S82240 ras homolog gene family, member E
 AB033025 KIAA1199 protein
 U03106 cyclin-dependent kinase inhibitor 1A (p21, Cip1)
 NM_015920 ribosomal protein S27-like
 Y00503 keratin 19
 AB041269 keratin 19 pseudogene
 AF015287 protease, serine, 23
 NM_001449 four and a half LIM domains 1
 U34962 NK2 transcription factor related, locus 5 (Drosophila)
 NM_012396 pleckstrin homology-like domain, family A, member 3



RHE LXIN vs RHE LXIN NTERT (B)
 RHE LXIN vs. RHE LXIN NTERT
 MRC-5 vs MRC-5 NTERT (B)
 MRC-5 vs. MRC-5 NTERT
 RHE vs RHE NTERT (B)
 RHE vs. RHE NTERT

NM 024615 hypothetical protein FLJ21308
 *M97815
 M13755 interferon, alpha-inducible protein (clone IFI-15K)
 *AB019565
 *X82153
 J04164 interferon induced transmembrane protein 1 (9-27)
 X03557 interferon-induced protein with tetratricopeptide repeats 1
 *X07868
 D14662 peroxiredoxin 6
 NM 023945 membrane-spanning 4-domains, subfamily A, member 5
 NM 000501 elastin (supravalvular aortic stenosis, Williams-Beuren syndrome)
 *AB008822
 AL110240 DKFZP566F084 protein
 AK001926 polybromo 1
 AK000428 hypothetical protein FLJ20421
 *AF005082
 AK000268 keratin 24
 AB033046 glutamate receptor, ionotropic, delta 1
 U68382 mannosidase, alpha, class 2B, member 1
 X94700 calcium binding protein 1 (calbrain)
 D80009 ribosome biogenesis protein BMS1 homolog
 *AC002542
 NM 014342 mitochondrial carrier homolog 2 (C. elegans)
 NM 013332 hypoxia-inducible protein 2
 AK024427 hypothetical protein MGC14859
 *AL117586
 AK001169 hypothetical protein FLJ10307
 X57206 inositol 1,4,5-trisphosphate 3-kinase B
 Y16610 spastic paraplegia 7, paraplegin (nure and complicated autosomal recessive)
 NM 016020 transcription factor B1, mitochondrial
 NM 022046 kallikrein 14
 AK001887 protein kinase, AMP-activated, gamma 2 non-catalytic subunit
 AB002388 KIAA0390 gene product
 *AL121755
 AF034611 cubilin (intrinsic factor-cobalamin receptor)
 AL110282 erythrocyte membrane protein band 4.1 (elliptocytosis 1, RH-linked)
 *AC004125
 *X65784
 Z19002 zinc finger protein 145 (Kruppel-like, expressed in promyelocytic leukemia)
 AJ002308 synaptotagmin 2
 NM 013346 sorting nexin 12
 L19593 interleukin 8 receptor, beta
 AL050280 cofactor of BRCA1
 AJ007581 matrilin 4
 AB018345 KIAA0802 protein
 AL049265 interleukin 6 signal transducer (gp130, oncostatin M receptor)